



WT-1671 GSM Trap Alarm System

USER MANUAL

Introduction

The new Animal trap alarm allows you to be alerted via SMS whenever an animal trap has been activated and an animal has been captured.

This allows a quick response to attend and recover the animal and reduce the stress and suffering for the animal.

This unique system will also save valuable travelling costs and time when having to manually check each remote animal trap daily.

The concept is extremely simple and the unit remains completely dormant using no power until the system is activated by the sprung loaded door removing the Magnet Key from its holder.

Once the Magnet Key is removed the system immediately boots up on to the local Mobile Phone Network and can send a customised S.M.S text alerts to up to 5 separate telephone numbers.

The system comes with two Rechargeable Battery so as to be able to keep one fully charged at all times.

The system is Dual Band or Quad Band and will accept any Global Network GSM SIM Card.



Step 1 - The simplest set up methods to set up Administrator number

Applied the “KISS Principle”, keep it simple, stupid.

The GSM Remote Control Switch is easy to setup and use. Insert the SIM card, simply use your mobile phone call to the unit, your mobile phone number will automatically register as the 1st Administrators

You will receive the following SMS message from the unit –

Administrator:

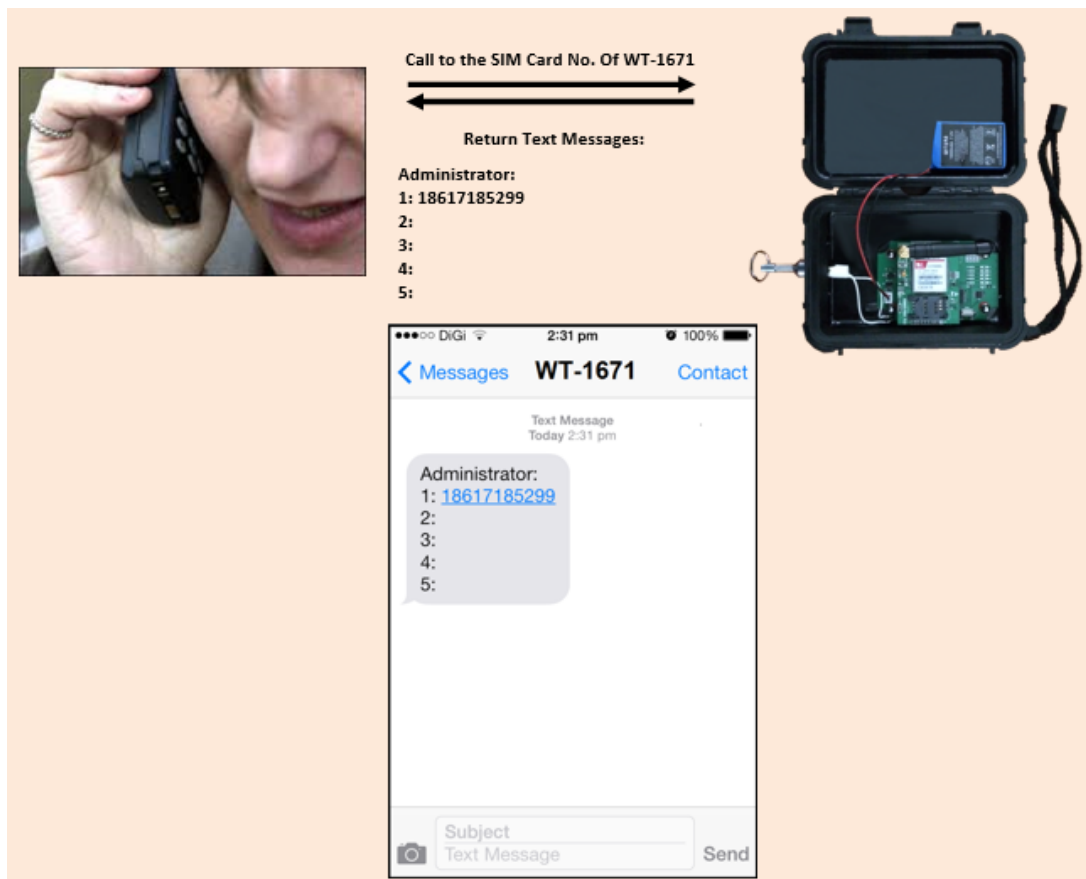
1: 18617185300 (your phone number)

2:

3:

4:

5:



You already finish the set up. Now, you can use your mobile phone call to the SIM Card number switch the device on permanently. Another call to the SIM Card will switch the device off permanently.

If you do not required to go through details setting, please process to STEP3 – Final Installation and Wiring

Step 2 - Advance Set Up

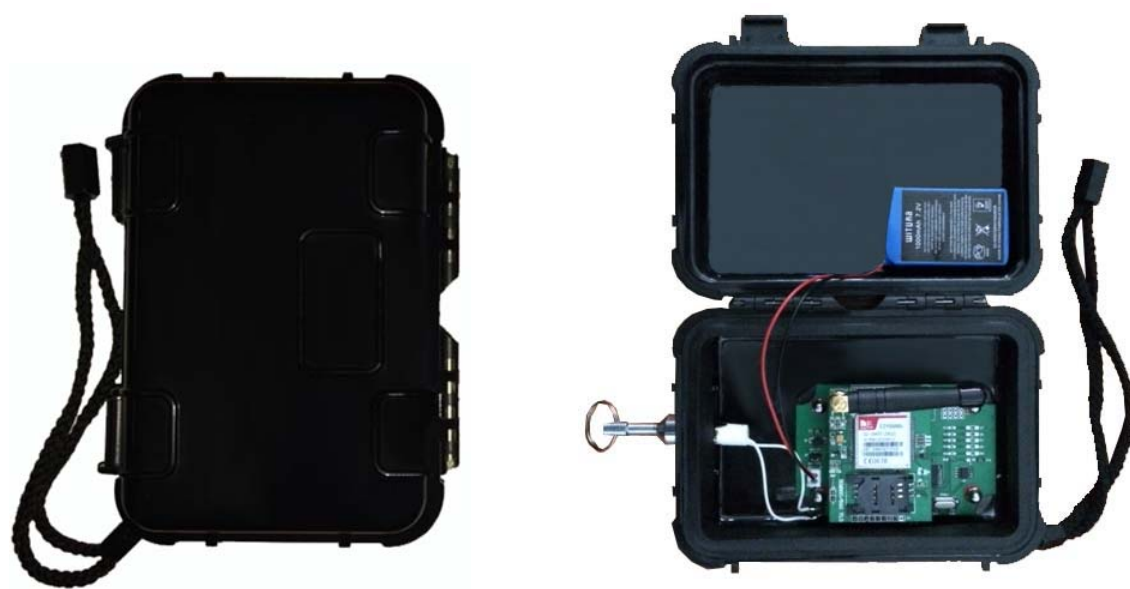
NO.	Description	Programming Code	SMS Texts Respond	Function
1	First Step of programming, you must enter the factory passwords of 1234 and go inside the programming mode. You only can perform the next commands after enter into programming mode	*0*1234#	You get administrator privileges! 2013-10-09 00:33 Wed	When you enter *0*1234#, you enter into the programming mode. You must perform the next command in 10 minutes. If you did not do anything, the system will exit from programming mode.
2	Change Password	*0*1234*new password# For example if you need to change to the new PW of 1212. *0*1234*1212#	New password<1212> 2013-10-10 16:07 Thu	Maximum 4 digits of passwords If you decide to protect your privacy, you can change the factory password to your new password. Enter the factory password follow by your new password.
3	Add telephone number into the admin list.	*1*1*telephone number# For example set Admin number 18617185300 into admin 2 *1*2*18617185300#	Administrator: 1: 15989427391 2: 18617185300 3: 4: 5: 2013-10-10 16:08 Thu	Set Admin Numbers ; *1*1* - set 1st admin number *1*2* - set 2nd admin number *1*3* - set 3rd admin number *1*4* - set 4th admin number *1*5* - set 5th admin number Only the number in the list can receive alarm texts message and active the relay output. You can add up to 5 telephone number into the admin list.
4	Check phone number you program in the list	*2*	Administrator: 1: 15989427391 2: 18617185300 3: 4: 5: 2013019019 16:09 Thu	
5	Delete the admin number in the list.	*3*N# N = Admin number 1- 5 For example, if you want to delete admin no 2. just enter *3*2#	Administrator: 1: 15989427391 2: 3: 4: 5: 2013019019 17:16 Thu	Delete Admin Number Delete 1st admin *3*1# Delete 2nd admin *3*2# Delete 3rd admin *3*3# Delete 4th admin *3*4# Delete 5th admin *3*5#

6	Check Signal Strength	*5*	CSQ<28> 2013-10-10 16:11 Thu	<p>You must confirm the signal strength at site before you install the unit.</p> <p>If the signal too weak, the unit will not function properly.</p> <p>CSQ 5 – 12 Signal too weak, system not function</p> <p>CSQ 13 - 24 Signal Good. System function well</p> <p>CSQ 25 – 32 Signal Excellent. System working well</p>
7	SMS Reply Message when the system ON/OFF	*21*N#	Message switch <ON> 2013-10-10 17:06 Thu	<p>N=0 means SMS Reply Message when the system OFF</p> <p>N=1 means SMS Reply Message when the system ON</p> <p>Factory Default as SMS Reply Message when the system ON</p> <p>If setting to not receive SMS Reply Message when the system OFF, the unit will return a message indicate successful setting for the command and it will no longer sending SMS reply until the setting of SMS Reply Message when the system ON is done. When the system having the temperature alert, wireless alarm alert, it will automatically sending the alert message to the Admin</p>

9	Edit Input Messages for the system and 9 Channels Wireless Alarm Alert Messages	*26*N*XXXXXXX#	<p>When Setting as *26*0*The equipment has already started!# Startup user defined information: The equipment has already started!</p> <p>2013-10-10 17:24 Thu</p> <p>When Setting as *26*01*The door closed!# Wireless 1 defined information: The door closed!</p> <p>2013-10-10 17:21 Thu</p> <p>When Setting as *26*10*Line Alarm!# Line user defined message: Line Alarm!</p> <p>2013-10-10 17:21 Thu</p> <p>When Setting as *26*11*Full!# Counter user defined message: Full!</p> <p>2013-10-10 17:21 Thu</p>	<p>N=0 means Edit for Input Messages for the system when switch on. (System Default: System startup! Master relay <OFF>)</p> <p>N=01 -09 means Edit for Input Alert Message for which channel of Wireless Alarm Equipment that connected. (System Default: Wireless alarm 1. Please timely precessing!)</p> <p>N=10 means Edit for Input Alert Message for line cut alert (System Default: Alarm: The line's status changes!)</p> <p>N=11 means Edit for Input Alert Message for pulse counter when it reach the value set. (System Default: The counter is full already!)</p> <p>XXXXXXX is the text messages content which can up to 69 alphabet. When the text message content successfully programmed, it will overwrite the system default text messages</p>
10	Check input messages programmed in the system alarm alert messages	*27*N#	<p>When Setting as *27*01# Wireless 1 defined information: The door closed!</p> <p>2013-10-10 17:40 Thu</p>	<p>N=00 means Check the Input Messages for the system when switch on</p> <p>N=01-09 means Check the Input Alert Message for which channels of Wireless Alarm Equipment that connected</p> <p>N=10 means Check Input Alert Message for line cut alert</p> <p>N=11 means Check Input Alert Message for pulse counter when it reach the value set.</p> <p>If there is no text message programmed, it will return a SMS with Blank Message</p>

11	Delete input messages programmed in the system alarm alert messages	*28*N#	<p>When Setting as *28*00#</p> <p>Startup user defined message:</p> <p>2013-10-10 17:42 Thu</p>	<p>N=00 means Delete the Input Messages for the system when switch on</p> <p>N=01-09 means Delete the Input Alert Message for which channels of Wireless Alarm Equipment that connected</p> <p>N=10 means Delete Input Alert Message for line cut alert</p> <p>N=11 means Delete Input Alert Message for pulse counter when it reach the value set.</p> <p>If there is no text message programmed, it will return a SMS with Blank Message</p>
12	Restart System	*33*	<p>After sending the command *33* system will restart and after 15-30second, will hear a ~di~ sound. If before the restart, the system is in armed status, all the admin number will receive</p> <p>System startup!</p> <p>Master relay <OFF></p> <p>2013-10-15 16:34 Tue</p>	Restart System

Step 3 - Installation



Production Specifications

Operation Voltage	12 volts DC
Operating Current	Maximum 500mA, typically 55mA
GSM Frequency MHz	GSM900/1800Mhz, or GSM850/900/1800/1900Mhz
Humidity	Less Than 80% RH
Operating Temperature	-20c to 55c
Physical Size	130 x 100 x 50mm
Protection	IP 65 Weather Proof Casing
Approvals	C.E, FCC, ETSI

Preparing the SIM card

All new SIM cards have to be registered with the network provider before they can be used, usually by calling the network provider or registering on their website please refer to the instructions supplied with your SIM card.

During the registration procedure a confirmation code or text message is usually sent to the SIM cards telephone number, to be able to read and react to the message you will need to insert the SIM card into an unlocked mobile phone.

After successfully registering the SIM card, ensure there is sufficient credit on the card for programming confirmation texts to be sent from the GSM Remote Control Switch.

You MUST ensure that the PIN request is disabled from the SIM card before inserting it into the GSM Remote Control Switch. If you do not disable the PIN request the GSM Remote Control Switch will not work. If the PIN request is not disabled and the unit is switched on more than 3 times you will have to reset the PIN using the PUK code which will have to be obtained from the service provider.

To check the PIN request status of your SIM card, place the card in an unlocked mobile phone, switch the phone on. If you are able to make calls without entering a PIN number the PIN request is disabled. If a PIN number is requested refer to the instructions supplied with the SIM card and then look through the phones options for the 'disable PIN request' and disable it.

You MUST disable any voicemail that is set up on the SIM card; the codes shown below are for UK networks only, please refer to your network operator if outside the UK

Vodafone: 1210 >Send - you will hear 'order is accepted and confirmed'

O2 - Call 1760 >Send - you will hear 'order is accepted and confirmed'

T-Mobile - Call 222 and follow instructions

Orange - Call 450 and follow instructions

The SIM card is now ready to use

We recommend that if you are using a 'pay as you go' (PAYG) SIM card that you choose to automatically 'Top-Up' when the cards credit falls below a certain limit please contact your network provider or visit their website for more details.

Most but not a using post-paid SIM cards will be de-activated by the network if not used to make an outgoing voice call or send an SMS text message within a specific period. To prevent this simply send the GSM Remote Control Switch a text command *0*PW#, then *2*, it will reply by text message, do this once a month to keep the SIM card active.

Warranty

Witura Technology Sdn Bhd warrants the WT-1671 GSM Trap Alarm System against defective parts and workmanship. Witura Technology Sdn Bhd shall, at its option, repair or replace the defective equipment upon the return of such equipment to any Witura branch. This warranty applies **ONLY** to defects in components and workman-ship and **NOT** to damage due to causes beyond the control of Witura, such as incorrect voltage, lightning damage, mechanical shock, water damage, fire damage, or damage arising out of abuse and improper application of the equipment.

Note: Wherever possible, return only the PCB to Witura Service Centres.

DO NOT return the enclosure.

The WT-1671 is a product of

Witura Technology Sdn Bhd

And is manufactured by

Shenzhen Witura Telecommunications Co., Ltd.

WARNING

For safety reasons, only connect equipment with a telecommunications compliance label. This includes customer equipment previously labelled permitted or certified.