



GT1
Toast
miniOne
TOFU
Pocket I
Pocket II
Fantasy

Style for You

User Manual

DIGILION Smart Card Readers

User Manual

Thank you for choosing DIGILION product. Please follow the instructions to install DIGILION smart card reader. **DO NOT** download or upgrade with unknown drivers. If you have any questions, please contact our customer service specialist.

This manual is suitable for following smart card readers in Window XP System.

Windows Vista / 2008 / 7 do not require driver installation.



GT1



Toast



miniOne



TOFU



Pocket I

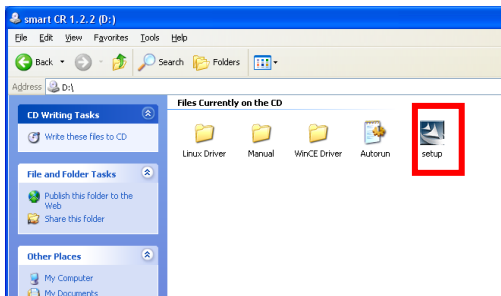


Pocket II



Fantasy

1.Driver Installation



Step1:

Download driver installer from DIGILION’s website.
Unzip the file.

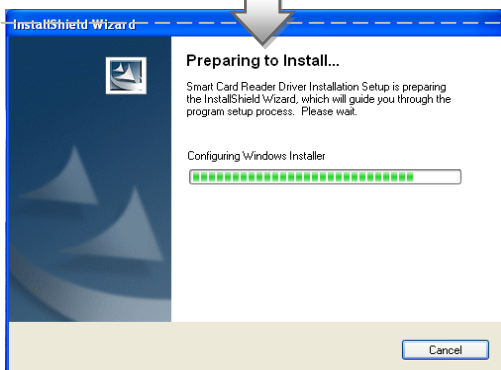
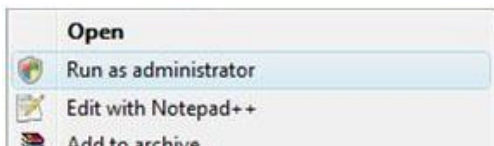
ME / 2000 / XP / 2003

Double click on “setup.exe” to install the driver.

Vista / 2008 / 7

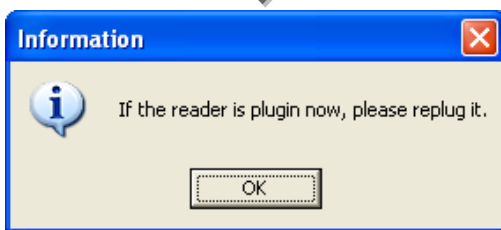
Click right button on “setup.exe”

Select “Run as administrator” to start installation.



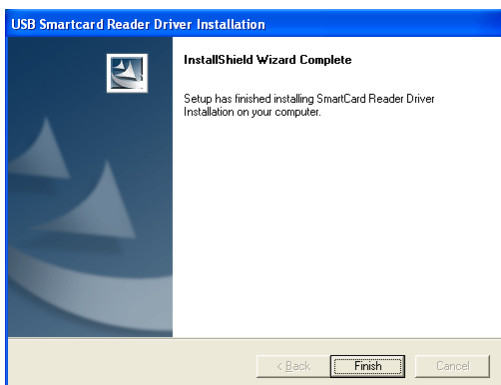
Step2:

Firstly, “Preparing to Install” window will open.



Step3:

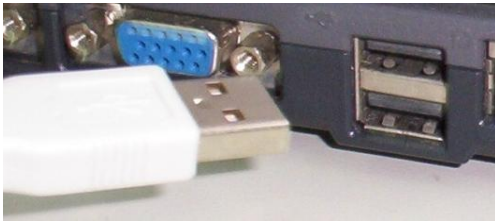
Then the screen shows “If the reader is plug in now, please un plug it.”



Step4:

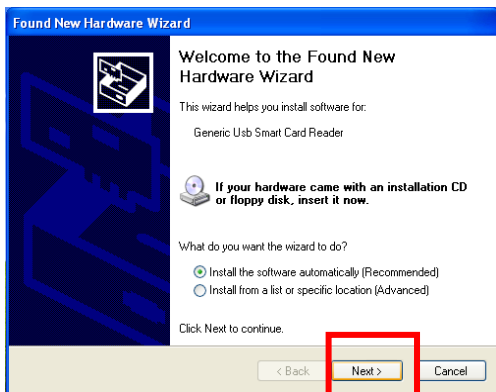
The screen shows that the driver installation is completed. Please click “Finish”.

2. Smart Card Reader Installations



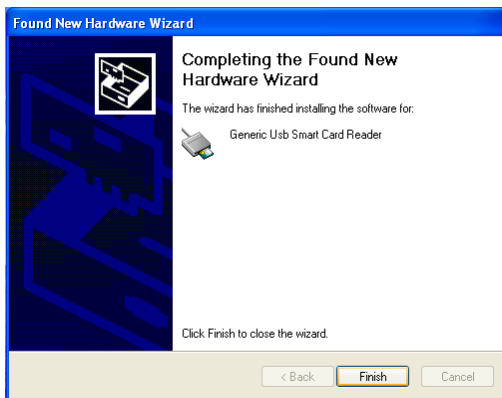
Step1:

Plug the USB into USB port.



Step2:

When the Smart Card Reader is connected to computer, the system will find a new installment immediately and start searching the driver. Please choose “install automatically”, and then click “next” to continue.



Step3:

The computer will show that the smart card reader installation has completed, click “Finish” and you can start using the device.

Note:

Some computers will not show Steps 2 and 3. Instead, it will automatically install the driver, and users may use Smart Card Reader immediately.