



WIFI VISUAL INTERCOM DOORBELL

WIFI



WIFI VISUAL INTERCOM DOORBELL

## Contents

1、Introduction of product.....	1
2、Installation .....	2
3、Port definition.....	3
4、Initial use and operation instruction.....	4
5、Doorbell Setting.....	5
5.1、Add doorbell settings.....	5
5.2、System settings.....	6
5.3、White list settings.....	7
5.4、Alarm settings.....	8
5.5、Equipment clock settings.....	9
5.6、Interface settings.....	9
5.7、Wifi settings.....	10
6、Introduce of functions.....	11
6.1、Intercom .....	11
6.2、Monitor. ....	12
6.3、Real-time Alerts.....	13
6.4、Video replay .....	14
6.5、Local pictures.....	15
6.6、Visitors/Alarm record. ....	16
7、Software system settings .....	17
8、Specification of product .....	18
9、Components .....	19

## **1、Introduction of product**

Wifi Visual intercom doorbell is a doorbell work with wifi . It connect with home wifi or wired LAN achieve two-way intercom between doorbell and cell phone .When visitors press the doorbell ,doorbell sounds and meanwhile camera will start to work sending real-time picture and call to smart phone . User receive the call and see the video to check who is outside ,can intercom with visitors and remotely unlock door etc .

Wifi Visual intercom doorbell have alarm and remote control functions , make your home security has more powerful barrier . Advance infrared light design make users can distinguish

the visitors in the evening. AC/DC power supply , eliminate the troubles of frequently replacing battery .

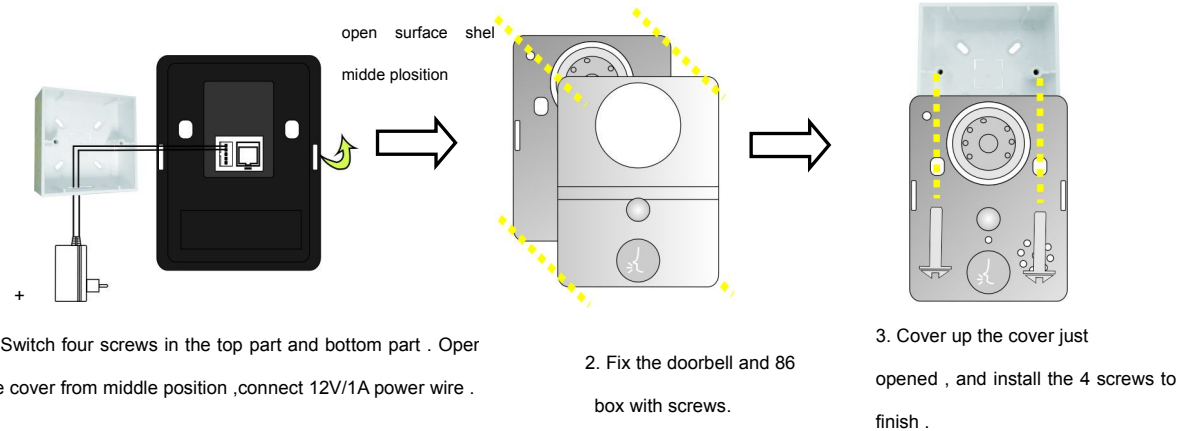
2.4G wifi transmission systems , real-time video transmission , Audio and video data transmission band up to 100M band at most ,

Support Android OS and Iphone OS.One doorbell can connect with Multi cell phone at the same time . Make you and your family can monitor home outdoor surroundings from anywhere .

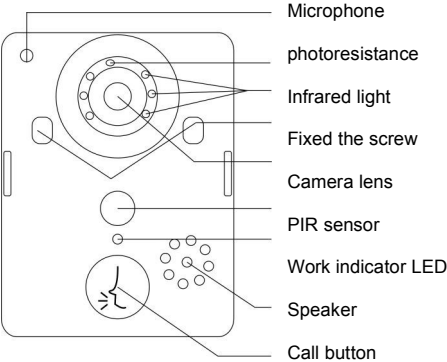
Pass CE , RoHS certification.

Thank you for your support of this products , your satisfaction is our aim !

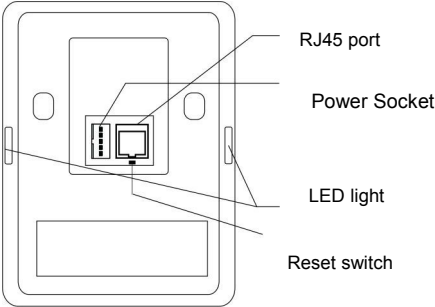
## 2、Installation Diagram



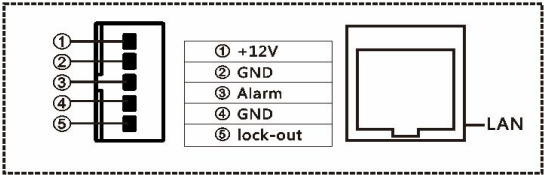
3、 Port Defination



front view



Rear view



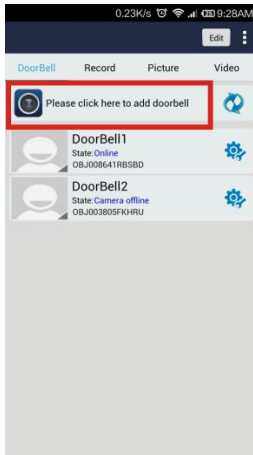
Rear connection diagram

#### **4、 Initial use and operation instructions**

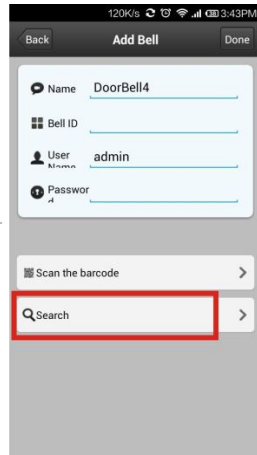
1. According to the installation diagram and connection diagram install doorbell , connect to power and lock to door bell .
2. Wait about one minutes , after speak “Sucessfully start system,welcome to smart home” .
3. Mobile phone Configuration :
  - 1).Install wifi door phone APP in mobile . Press the doorbell button above 3 seconds , Doorbell enter in Configuration model , and give a notice “Network configuration model now , set it down in 5mins” .
  - 2).Open mobile' wifi,connect to the hot spot named “BELL-00\*\*\*\*\*” ,initial password is 123456789,.After connecting successfully, open wifi door phone app again , press “ Add doorbell” , then click search or shake mobile ,when smart phone show a ID number , Click the ID number , then click“done”icon to finish.
  - 3). First connected mobile Defaults to the administrator. If need to add more cellphone user , set up at administrator cellphone phone .Enter into white list setting add user name and password (at most 8users including admin).
4. Network Configuration as soon as finishing “add door bell ID sucessfully” :
  - 1). Enter into wifi settings , add home wifi ,click “done”to finish
  - 2).Insert internet cable to LAN port directly ,wifi setting is no need
5. Change administrator password : administrator cellphone enter into white list settings , click “admin user “ , put into password click “done” to finish .Notice :After set up administrator password , need to delete doorbell and add again by new password . Or cell phone will notice wrong password .
6. Each time change the admin, press “reset switch”at door bell back above 10S , can restore factory settings .

## 5、Door bell setting

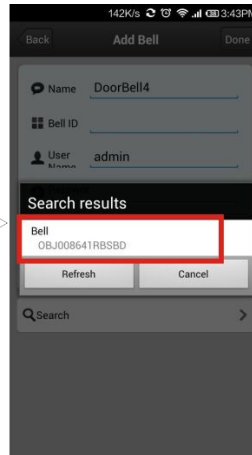
### 5.1、Add door bell



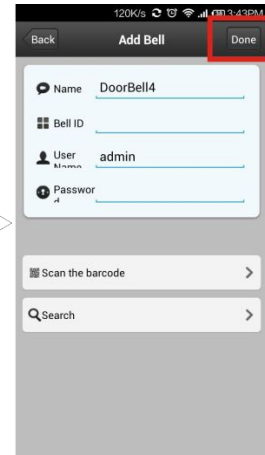
1. Click add door bell



2. Can choose to manually input, QR code scanning, or LAN search to find the door bell and add it



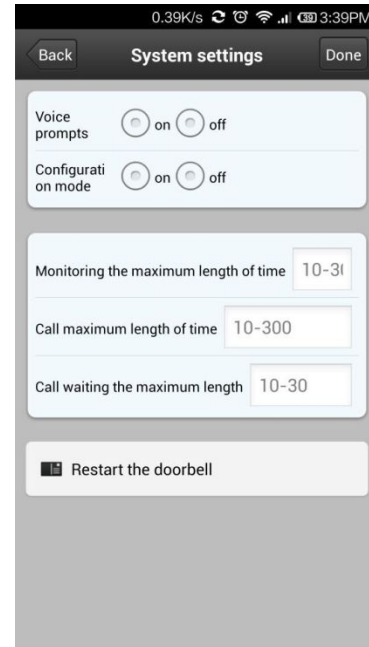
3. When search over LAN, please make sure the mobile phone is on the same LAN as the door bell device; then select the target device. The regular target device name is bell + ID number.



4. When the operation is complete, click "done" to finish

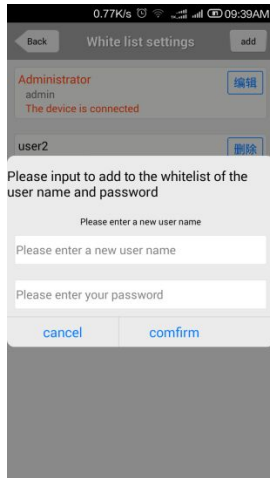
## 5.2、System settings

- 1.Voice prompt switch : turn on or turn off . Turn on by factory settings.
- 2.Configuration mode switch: turn on or turn off .Turn on by factory settings.
- 3.Monitoring the maximum length of time : Range from 10 to 300 S.
- 4.Call maximum length of time: Range from 10 to 300 S.
- 5.Call waiting the maximum length of time : Range from 10 to 30 S.

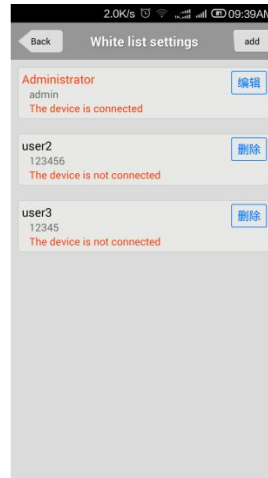




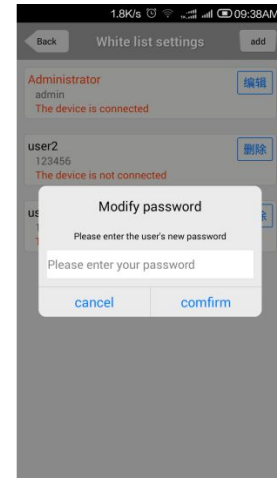
### 5.3、White list settings



1.Administrator can add and delete other cellphone user . Common cellphone user only can Modify own password .Same user log in different cell phone is not allowed .



2.Add new cellphone user



3.Modify user password

## 5.4、Alarm settings

1. When alarm turn off (Disarm) Any alarms are not notified to cellphone

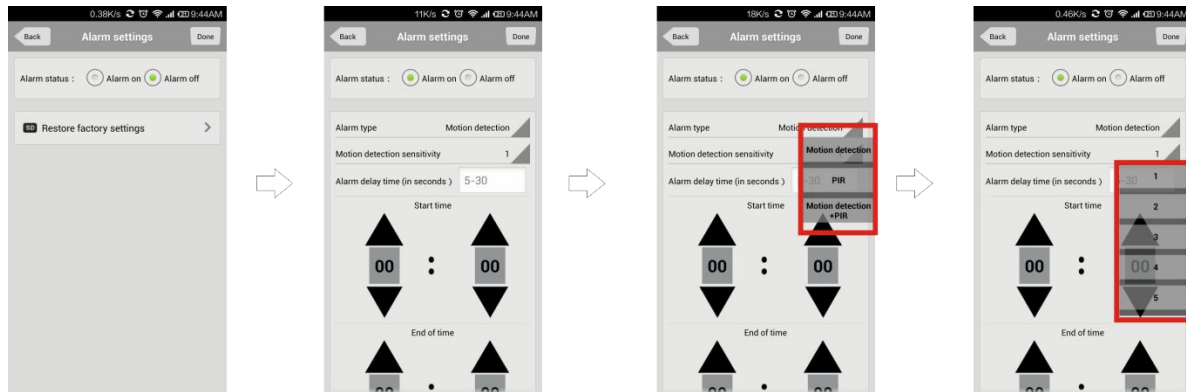
2. When alarm turn on (Arming) User can set up other parameters further

A. Alarm type : Motion detection ,PIR and so on

B. 1-5

C. Alarm delay

D. Alarm effective time



5.5、Equipment clock settings

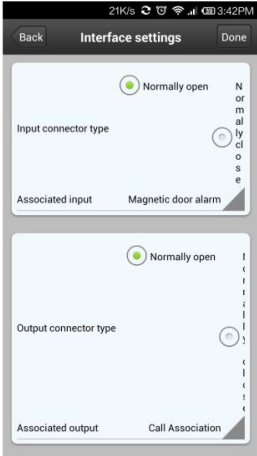
According to actual situation , set correct local time .Time automatically be same with internet

5.6、Port definition

Used to define extended IO control , as well as the linkage function.

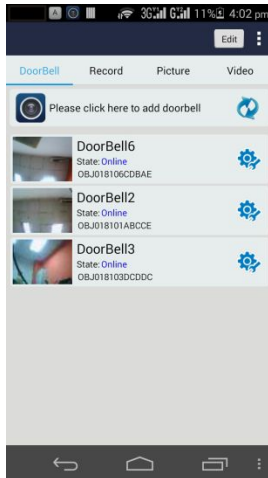


1.Equipment time setting

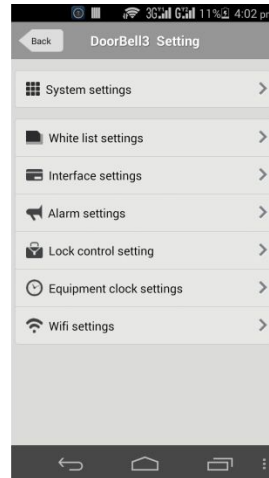


2. Port setting

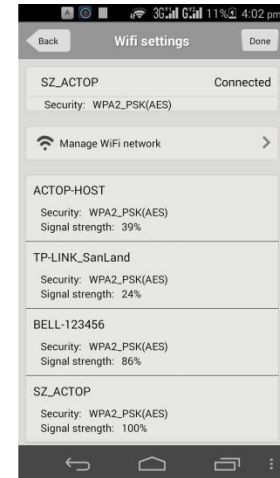
## 5.7、WiFi settings



1.Click setting icon enter into setting interface



2.Click wifi setting enter into wifi settings



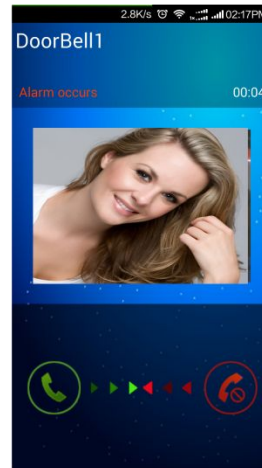
3.Doorbell will show all the valid routes in the list , select destination routing (SSID)and click it to finish .

## 6、Function introduction

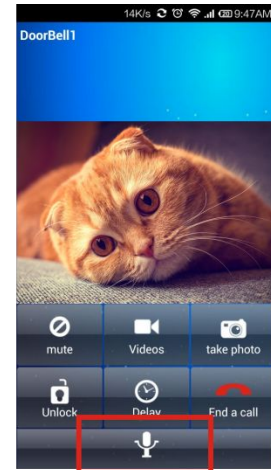
### 6.1、Intercom



1.Visitors press the door bell

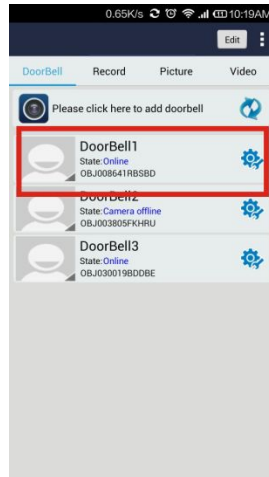


2.Slide right or left side to answer or hand up

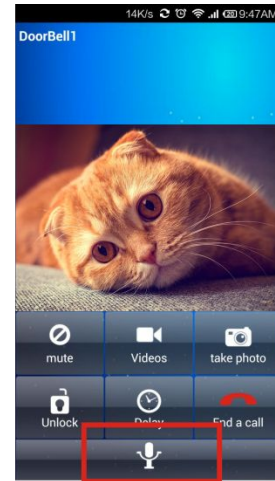


3.Any cell phone answer it,others moblie will automatically hand up.In the precess of intercom,can support taking video,picture,and remotely unlock door.Press micphone on screen to send voice to doorbell.Delay button can extend the talk time.Ending a call can press"end call"button

## 6.2、Proactive Monitor

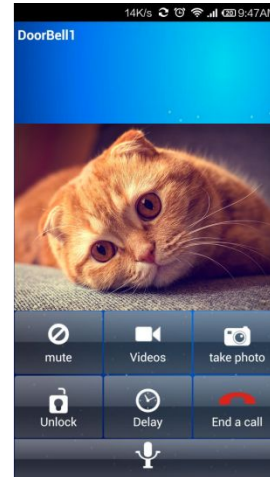
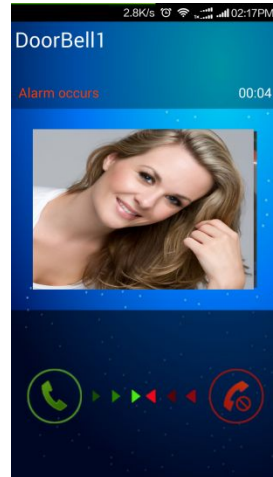


1. In main interface, directly click the door bell device (online), user can proactively monitor



2. In monitor interface, user can take video, picture, but don't support remotely unlocking

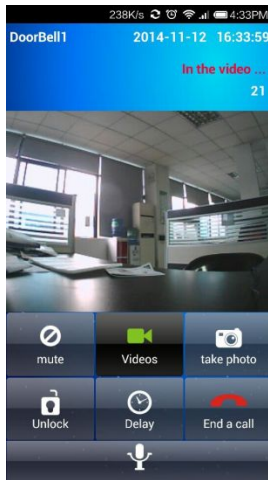
### 6.3、Real-time alerts



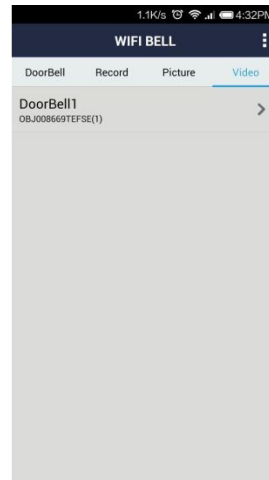
1.when alarm accurs,all registered mobile phone will receive instant notification,Slide green answer key,can connect with door bell device and real time monitor,slide red hand up key to hand up

2.Alarm monitoring

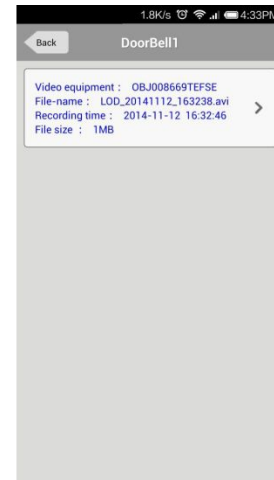
## 6.4、Video Replay



1..In process of intercom and monitor,user can take videos.



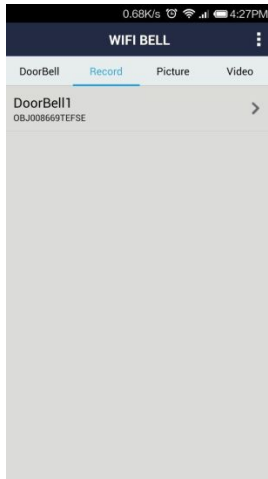
2.Click"Video"file list,select object file.



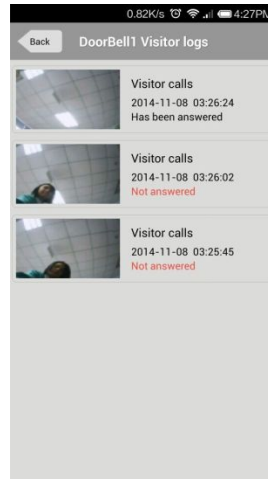
3.Video playback,use a video player installed in mobile phone for video playback,Storm media player is recommended.



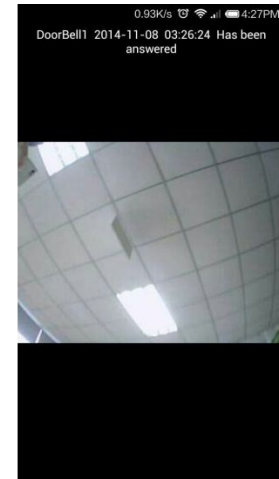
## 6.5、Local picture



1.select online door bell device

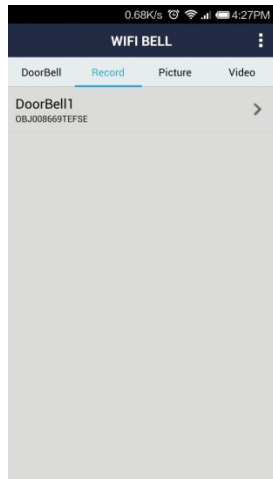


2.Group and sort by time

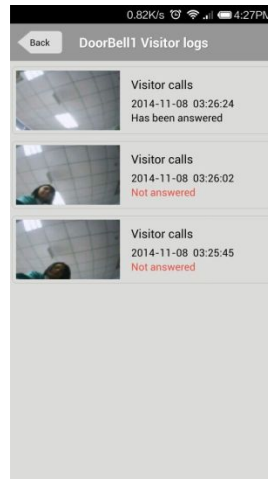


3.Click to see larger picture

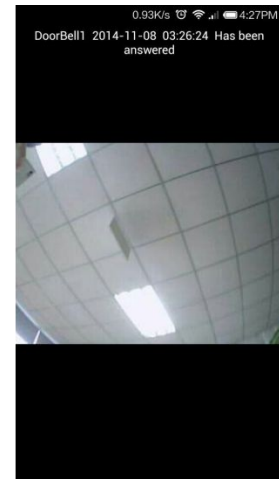
## 6.6、Visitors/Alarm record



1.Navigate to record interface,select a target device,visitors call and alarm information are all saved

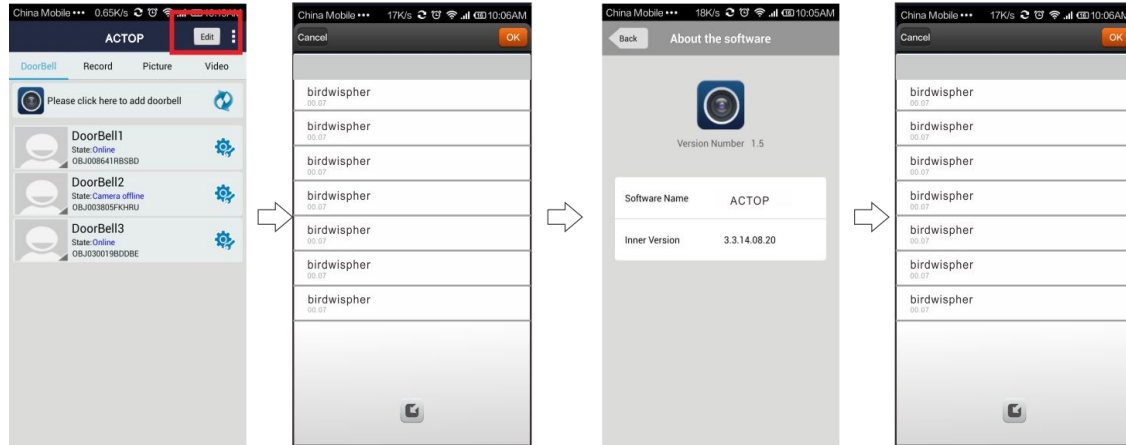


2.Overview



3.View the associated pictures

## 7、System setting



1.Navigate to above interface,click  
“modify”button,appears tone  
setting,software version etc

2.Set door bell ringtone

3.View software version

4.set alarm ringtone

## 8、Specfications

Model	WIFI601
Camera	1/4"/F2.4/110°
Distinguishanility	420line
Illumination	2LUX
Light source	6pcs Infeared light
Power	Standbay;DC 12V 1A
Powerdissipation	Stanbay;working;3.8W
Dimensions	120*96*34mm

## 9. Components in cluded

1.Outdoor camera

2.Screws(standard)

3.User manual

4.Power Supply

5.The interface line

6.IOS APP and Android APP for mobile

[NOSE]

(1)Our Company is committed to reform and innovation,and reserves the right to make changes and improvements without further notice.Illustrations in this manual are for reference only.

(2)All warranty and liability is void should you or your dealer open the unit with out authorization or remove/deface the product labeling

(3)Warranty:For one year from purchasing this product,we promise to provide you with free maintenance and technical support.This excludes damage during installation,unauthorized tampering and willful damage.

(4)Warranty periods different from this cannot be support by the manufacturer.