

MOXA SoftDVR™ Lite IP Surveillance Software

User's Guide

First Edition, February 2004



Moxa Networking Co., Ltd.

Tel: +886-2-2910-1230

Fax: +886-2-2910-1231

www.moxa.com

support@moxanet.com (Worldwide)

support@moxa.com (The Americas)

*This User's Guide contains the basic procedures required to install and operate SoftDVR™ Lite IP Surveillance Software. Refer to SoftDVR™ Pro/Lite IP Surveillance Software User's Manual, which can be downloaded from Moxanet's website, for more details.

MOXA SoftDVR™ Lite IP Surveillance Software User's Guide

The software described in this manual is furnished under a license agreement and may be used only in accordance with the terms of that agreement.

Copyright Notice

Copyright © 2004 Moxa Networking Co., Ltd.
All rights reserved.
Reproduction without permission is prohibited.

Trademarks

MOXA is a registered trademark of Moxa Networking Co., Ltd.
All other trademarks or registered marks in this manual belong to their respective manufacturers.

Disclaimer

Information in this document is subject to change without notice and does not represent a commitment on the part of Moxa.

Moxa provides this document “as is,” without warranty of any kind, either expressed or implied, including, but not limited to, its particular purpose. Moxa reserves the right to make improvements and/or changes to this manual, or to the products and/or the programs described in this manual, at any time.

Information provided in this manual is intended to be accurate and reliable. However, Moxa Technologies assumes no responsibility for its use, or for any infringements on the rights of third parties that may result from its use.

This product might include unintentional technical or typographical errors. Changes are periodically made to the information herein to correct such errors, and these changes are incorporated into new editions of the publication.

Product Information

Overview

MOXA SoftDVR™ IP Surveillance Software is designed for IP Surveillance systems that use MOXA VPort 2100 Series Video Servers as the Distributed Video Networking solution. With the help of MOXA SoftDVR™, system integrators can seamlessly integrate other applications, such as I/O sensors and alarms, with CCTV systems over an IP-based network.

There are 2 models of MOXA SoftDVR™ IP Surveillance Software:

SoftDVR™ Lite (Single-PC version)

- Up to 4-channel (Quad) IP Surveillance Software with video viewing, recording, camera control, video motion detection, scheduling and user authorization management
- Bundled on the Software CD free of charge with VPort 2100 Series Video Servers

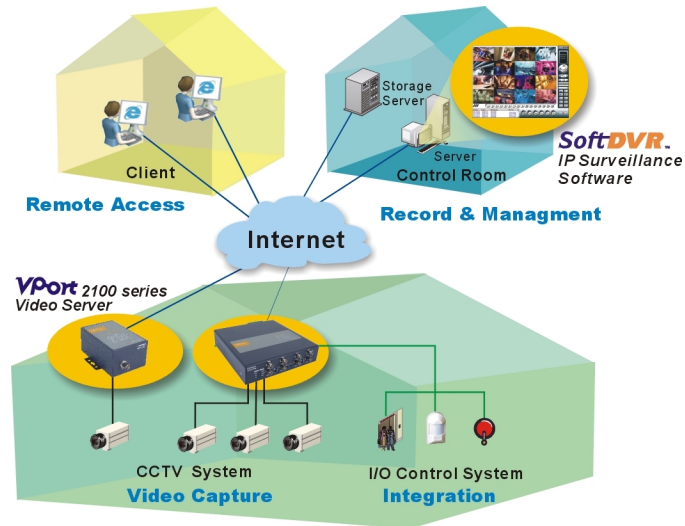
SoftDVR™ Pro (Network version)

- Up to 16-channel IP Surveillance Software with complete video management, alarm message management, and system administration
- Sold with the Software CD containing SoftDVR™Pro and User's Manual

(Contact your sales representatives to purchase MOXA SoftDVR™Pro IP Surveillance Software)

This User's Guide only contains information about SoftDVR™ Lite. For more details, go to www.moxa.com/product/video_networking/SoftDVR.htm for a complete product introduction and to download the SoftDVR™ Pro/Lite IP Surveillance User's Manual.

Typical Application



Note The Remote Access and I/O Device Management functions are provided only with SoftDVR™ Pro.

Features

Administration Management and Video Server Control

- Supports MOXA VPort Series Video Servers
- Configure camera names, video quality, and video resolution separately
- Import/export configuration from/to VPort Video Servers
- Supports upgrading VPort's firmware remotely
- Can add up to 32 users per system
- User authorization level protection by passwords
- Supports PTZ camera controls
- Automatically resume viewing and recording after the system reboots
- Easy camera management with your own e-map

Viewing

- Remote Access from client web browser
(only supported by SoftDVR™ Pro)
- Supports 1, 4, 6, 8, 9, 10, 13, 16 camera viewing formats
(For SoftDVR™ Pro, a maximum 16 cameras in the list; for SoftDVR™ Lite, a maximum of 4 cameras in the list)
- Zoom-in/Zoom-out functions for individual cameras when playing back images
- Viewing and recording by schedule or event triggering for each camera
- Historic playbacks by time or events
- Snapshots taken in playback mode to get JPEG images for printing or saving as evidences
- Adjustable contrast, brightness, sharpness, blurriness, and grayscale of the snapshot images

Recording

- Images recorded in AVI format—compatible with popular media players
- Adjustable recording frame rate over the LAN/Internet to match the real frame transmit speed, and to keep the video synchronized with the actual time
- Overridable HD space in FIFO (First-In-First-Out) sequence
- Recorded video files can be stored on a local PC or a Windows-based networked storage server
(SoftDVR™ Lite does not support storing on a network hard disk.)

Alarm

- Video Motion Detection (VMD) function for each camera
- Selectable VMD area for each camera
(SoftDVR™ Lite only supports full image VMD)
- Alarms can be triggered by VMD, video failures, storage full, GPI, and sent via email or GPO, or trigger the PTZ camera to a preset position
(SoftDVR™ Lite only supports VMD, Video Fail alarm)
- System status can be reviewed via the system log

System Requirements

SoftDVR™ Pro

MS Windows 2000/XP
Intel 2.4 GHz Pentium 4 recommended
512 MB SDRAM recommended
32 MB Display Memory or above
DirectX 8.1 or above

SoftDVR™ Lite

MS Windows 2000/XP recommended
Intel 1 GHz Pentium III or above
256 MB SDRAM or above
32 MB Display Memory or above
DirectX 8.1 or above

Note Since a video surveillance system requires a lot of system resources, we strongly recommend that the server you use for running SoftDVR™ Lite/Pro is used solely for video surveillance.

1-6 MOXA SoftDVR™ Lite IP Surveillance Software
User's Guide

2

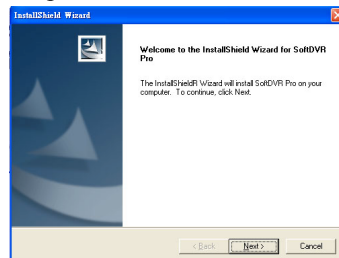
SoftDVR™ Lite Installation

Before Installing the Software

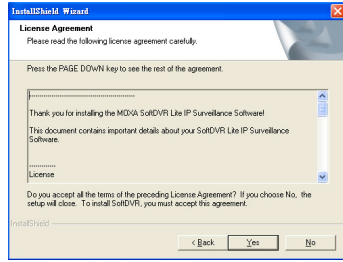
1. Make sure you have installed DirectX 8.1 or above on your PC.
2. Run SoftDVR Lite.exe, which is included on the VPort Series Software CD (or download the software from Moxa's website).

Starting the Installation

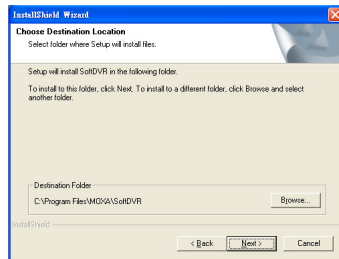
Step 1: The **InstallShield Wizard** will start. Click on **Next** to continue.



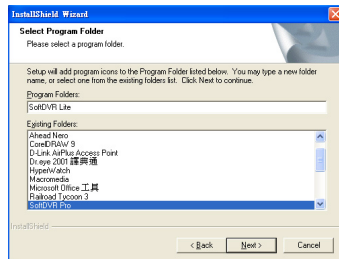
Step 2: The **License Agreement** window will open next. Click **Yes** to continue.



Step 3: The **Choose Destination Location** window will open next. Select the folder you wish to install SoftDVR™ Lite to, and click on **Next** to continue.

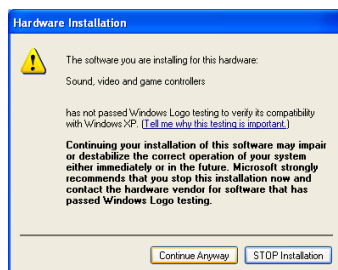
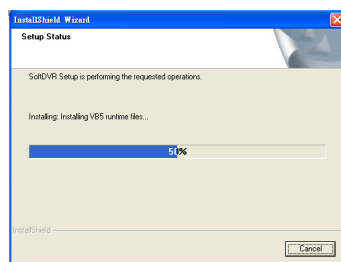


Step 4: The **Select Program Folder** window will open next. Select the program folder that you wish the wizard to create an icon for, and then click on **Next** to continue.

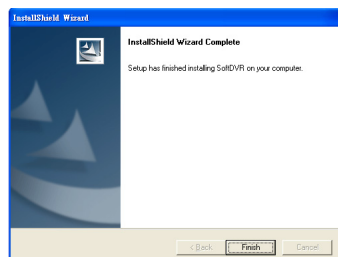


1-2 MOXA SoftDVR™ Lite IP Surveillance Software User's Guide

Step 5: The wizard will start the installation process. A digital signature request window will appear during the installation process. Click on **Yes** to continue the installation.

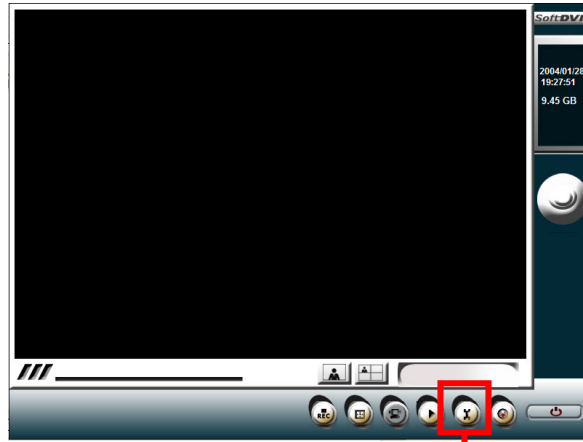


Step 6: The **InstallShield Wizard Complete** window will open next. Click on **Finish** to complete the installation.



Accessing SoftDVR™ Lite for the First Time

To launch the SoftDVR program, click on **Start→Program Files→SoftDVR Lite**. The main page will open next. Its resolution is 800 × 600, without any video image. Click on the **Application Settings** button to set up the VPort and cameras.



Application
Settings

3

SoftDVR™ Lite

General Operation

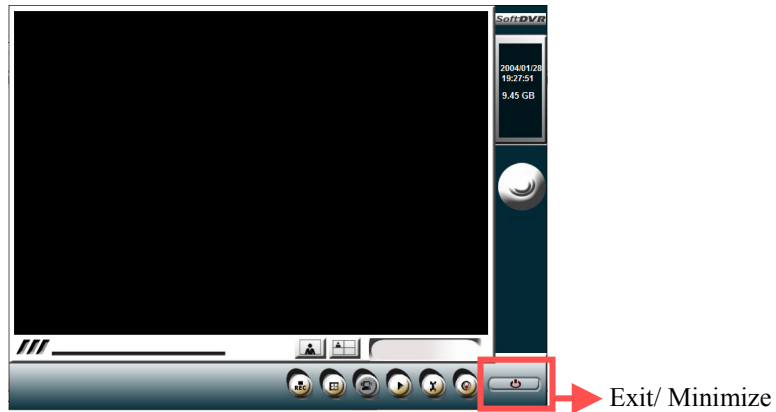
Authentication

If administrator or users management has been configured in the **User Management** mode, an authentication request will appear when accessing SoftDVR™ Lite. For administrators, enter the user name as **admin** or **administrator**, and then enter the password that you set up. For other users, type the given user name and password.



The image shows a software authentication dialog box. At the top left is the MOXA logo, and at the top right is the text 'SoftDVR™'. Below this, there are two input fields: 'User Name:' followed by a text box, and 'Password:' followed by a text box. At the bottom of the dialog, there are two buttons: 'OK' and 'Cancel'.

Administrators and users can directly use the Logout/Login function via the Exit/Minimize button located on the bottom right corner of the the main page to exit/access SoftDVR™ Lite.



Functions



3-2 MOXA SoftDVR™ Lite IP Surveillance Software User's Guide

Function Buttons



Recording



Scheduling



Remote Server (not provided)



Playback



Application Settings



Camera Map

Viewing

SoftDVR™ Lite has 2 viewing formats: 1 channel on the screen or 4 channels on the screen. You can easily change the viewing formats by using **Viewing Formats Selection**. And you can also select the camera you wish to view/control by clicking on one of the buttons in the **Camera List**.

Recording



To activate the recording function, click on the recording button from the **Function Buttons**. There are 3 kinds of recording, which you can activate with each camera separately:

1. **Monitor only, no recording**: no recording at any time.
2. **Round-the-clock**: recording all the time.
3. **Motion detect**: recording only when VMD is triggered.

Scheduling

To activate the scheduling function, click on the scheduling button from the **Function Buttons**. The 4 features for scheduling are as follows:

1. Set up the time period by time and weekday.
2. Action items include recording and remote access
3. Camera selectable
4. Details of scheduling tasks are described in the task remarks.
5. The editable scheduling task list is provided.

Administrators can set up scheduling tasks on the **Application Setting/Scheduling** page.

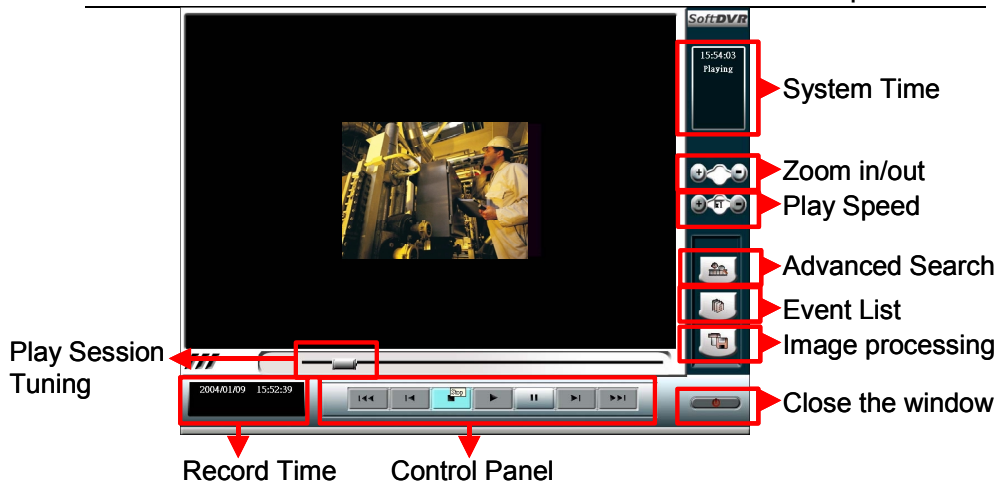
Note The time period setting for **Scheduling jobs** is based on 24-hour time. If you wish to set an 8-hour time task, which will run overnight, you can set up 2 different scheduling jobs, such as 20:00-23:59, and 00:00-04:00.

Note A **Scheduling job** also includes recording. For this reason, the **Recording** button from the **Function Buttons** on the main page will turn dark to disable the recording function when the **Scheduling** function is active. This is to avoid the conflict caused by the scheduling task and the manual operation of recording and remote service.

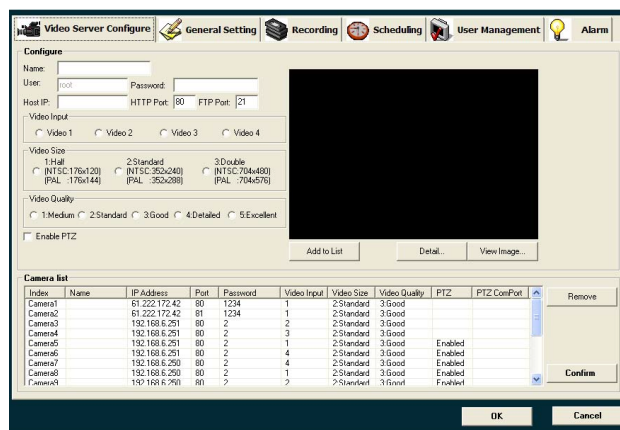
Playback

Administrators and users with authorization can view the playback of historic recorded files via the **Playback** function. To activate the **Playback** function, click on the **Playback** button from the **Function Buttons**. A **Security Playback** window will open to play back the recorded file.

General Operations



Application Settings



There are 5 major setting categories for SoftDVR™ Lite.

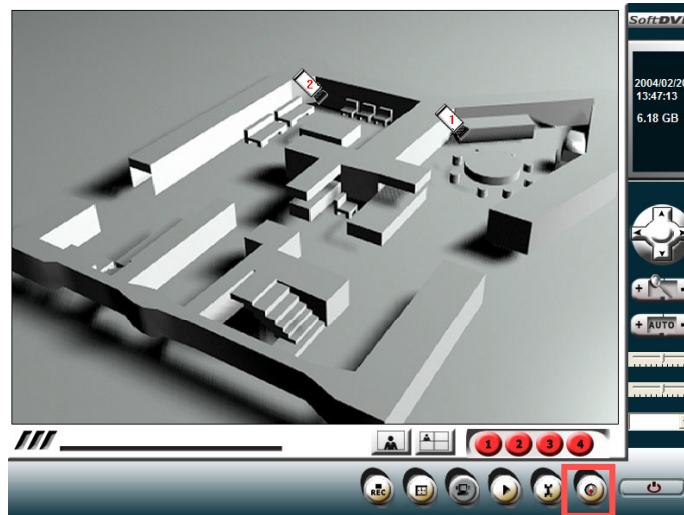
1. **Video Server Configure:** Administrators must configure MOXA VPort Series Video Servers and cameras to acquire video images before using the functions provided by MOXA SoftDVR™ Lite.

-
2. **General Setting:** From the **General Setting** page, administrators can configure the SoftDVR™ Lite server's host name, the start-up status, storage disk locations, camera caption, camera display, email addresses to send alarms to, and camera scanning intervals.
 3. **Recording:** There are 2 major settings on the **Recording** page. One is the recording setting for each camera, and the other is VMD settings.
 4. **Scheduling:** Administrators can set up the time period, weekday, tasks, and camera enabling on this page.
 5. **User Management:** The administrator's password can be set up on this page, as well as the users list that can include up to 32 users. Administrators can also configure camera operation and the remote service for each user on this page.

For more details about Application Settings, refer to the SoftDVR™ Pro/Lite IP Surveillance User's Manual.

Camera Map

SoftDVR™ Lite provide a graphic E-map function for camera management. Administrators can import a layout image and place the cameras on the image for easy management of the number of cameras. To activate this function, click on the **Camera Map** button. Administrators can use this function to manage the cameras easily.



Camera Map

A

Service Information

This appendix shows you how to contact Moxa for information about this and other products, and how to report problems.

In this appendix, we cover the following topics.

- ❑ **MOXA Internet Services**
- ❑ **Problem Report Form**
- ❑ **Product Return Procedure**

MOXA Internet Services

Customer satisfaction is our number one concern, and to ensure that customers receive the full benefit of our products, Moxa Internet Services has been set up to provide technical support, driver updates, product information, and user's manual updates.

The following services are provided

E-mail for technical support support@moxanet.com

World Wide Web (WWW) Site for product information:

<http://www.moxa.com>

Product Return Procedure

For product repair, exchange, or refund, the customer must:

- ◆ Provide evidence of original purchase.
- ◆ Obtain a Product Return Agreement (PRA) from the sales representative or dealer.
- ◆ Fill out the Problem Report Form (PRF). Include as much detail as possible for a shorter product repair time.
- ◆ Carefully pack the product in an anti-static package, and send it, pre-paid, to the dealer. The PRA should be visible on the outside of the package, and include a description of the problem, along with the return address and telephone number of a technical contact.