



contains post
consumer material

© 2012 MH BERTUCCI, INC.
ALL RIGHTS RESERVED
PRINTED IN THE U.S.A.

Contact Information:

askenzo@mhbertucci.com

866-665-7327

www.bertucciwatches.com

Please retain this owners manual for future reference.

rev.6

BERTUCCI

™

PERFORMANCE FIELD WATCHES™

ANALOG MODELS

OWNERS MANUAL

Congratulations!

You are now the owner of a Bertucci™ Performance Field Watch.™ Every Bertucci™ watch has been carefully designed and manufactured from the best materials with a non-compromised set of premium features. This is the basis for our Promise Of Performance™ to you. Please carefully read this manual to familiarize yourself with your Bertucci field watch.

BERTUCCI™

PERFORMANCE FIELD WATCHES™

Table of Contents:

| | |
|--|------------------|
| Our Story – Your Watch | 2 |
| Durability by Design® | 3 |
| Setting models without date | 4 – 5 |
| Setting models with date | 6 – 7 |
| Water resistance | 8 |
| Care for your Bertucci™ watch | 9 – 11 |
| Genuine Bertucci™ DX3® watch bands | 12 – 15 |
| Warranty information | 16 – 17 |
| Refurbishment program | 18 – 19 |
| Battery information | 20 |
| Thank you, In The Field With Bertucci™ | Inside backcover |
| Contact Us | Backcover |

Our Story – Your Watch:

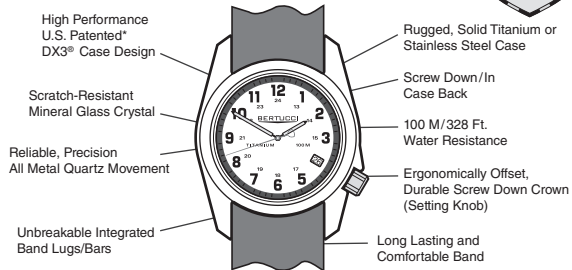
Our story is a simple one. It's about building a better watch. It's a Promise Of Performance™ that is derived from a belief that innovative design and attention to detail matter. It is this focus and integrity that drive us, an honest, true and authentic way.

We believe if a watch is done right, it connects with you... creating an emotional touch point that says something about you, a personal expression well suited to your active lifestyle.

Bertucci™ Performance Field Watches™ balance form and function, with an enduring style and rugged quality that are ready to survive the day to day challenges that come your way... whatever they may be.

Durability by Design®:

When we create a watch, we study the ways in which it will be worn and used. As a result, every Bertucci™ watch is carefully designed, engineered and manufactured with a non-compromised selection of materials and features.



*Manufactured using one of more of the following U.S. Pat. No: 488388, 488075, 488724, 582296, 609586, 645766, 7832605 and other patents pending.

Setting instructions: **Models without date**

If packaging clip is on the crown (setting knob), please remove.

Note: Crown may already be in the out position or unscrewed.

Step 1: Turn crown counter clock-wise to unscrew crown (fig. 1).

The crown is completely unscrewed when it turns freely.

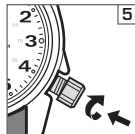
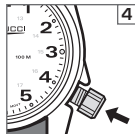
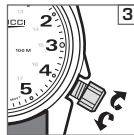
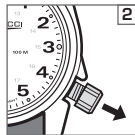
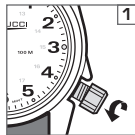
Step 2: Gently and carefully pull crown out to stop second hand (fig. 2).

Step 3: Turn crown clock-wise or counter clock-wise, moving hour and minute hands to set the desired time (fig. 3).

Step 4: Push crown in to re-start second hand (fig. 4).

Step 5: Push in and turn crown clock-wise to engage threads.

Continue to turn crown clock-wise to firmly screw/rethread down. Do not overtighten (fig. 5).



Note: Please screw/rethread down crown (setting knob) to ensure water resistance and maintain warranty. Do not overtighten.

Setting instructions: **Models with date**

If packaging clip is on the crown (setting knob), please remove.

Note: Crown may already be in the out position or unscrewed.

Step 1: Turn crown counter clock-wise to unscrew crown (fig. 1).

The crown is completely unscrewed when it turns freely.

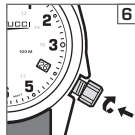
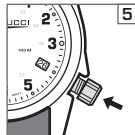
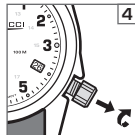
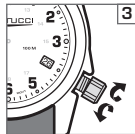
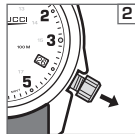
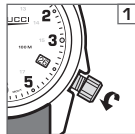
Step 2: Gently and carefully pull crown halfway out, you will feel a “click,” there will be a bit of feel here (fig. 2).

Step 3: Turn crown either clock-wise or counter clock-wise (depending on the model) to advance the date, continue to advance the date to yesterday’s date (fig. 3).

Step 4: Carefully pull the crown out a bit further for a second “click.” Turn the crown clock-wise to cycle the time past midnight, you will see the date advance to today’s date. Continue to advance to set the desired time, this will ensure the AM/PM is correct (fig. 4).

Step 5: Push crown in to re-start second hand (fig. 5).

Step 6: Push in and turn crown clock-wise to engage threads. Continue to turn clockwise to firmly screw/rethread down crown. Do not overtighten (fig. 5).



Note: Please screw/rethread down crown (setting knob) to ensure water resistance and maintain warranty. Do not overtighten. Date will need to be reset for months not ending with 31 days.

Water resistance:

Your Bertucci™ watch has been carefully designed and tested to be used in water. The case material, screw down crown, and case back are premium features to improve water resistance performance. Bertucci™ watches are engineered to withstand water pressure to 160 P.S.I.A (equals immersion to 100 meters or 328 feet below sea level) if crown (setting knob) is screwed down.

- 1 Never adjust crown (setting knob) when watch is wet or submerged in water.
- 2 Never wear the watch unless the crown (setting knob) is completely screwed down. Don't forget to tighten crown (setting knob) down after setting time as water will leak and damage movement.
- 3 The watch is water resistant only as long as crystal, crown and case are intact and undamaged.
- 4 Your Bertucci™ watch has been designed to be worn during activities in which the watch will be exposed to water and submersion in water. However, the watch is not a professional diver watch and should not be used for diving.
- 5 Do not operate push buttons (if equipped with) when watch submerged in water.

Care for your Bertucci™ watch:

- 1 Never wear the watch unless the crown (setting knob) is completely screwed/ rethreaded down. Do not overtighten crown.
- 2 We recommend rinsing your watch and band with fresh water after exposure to salt water, chlorinated water, chemicals or soil loads.
- 3 Never adjust crown (setting knob) when watch is wet or submerged in water.
- 4 Keep watch clean and free of debris, especially around the crown area. Use dish detergent & warm water with a soft brush to clean, keep crown (setting knob) screwed down when cleaning.
- 5 If leather band is submerged in water for an extended time period, allow it to air dry.
- 6 Replace band if excessively worn (see page 12).
- 7 If watch has stopped bring it to a local jeweler or a professional watch service shop for battery replacement/check (see page 20).
- 8 Do not expose your watch to intense magnetic fields such as loudspeakers and other electromagnetic devices.
- 9 When setting your watch, handle the crown (setting knob) gently as this is a precision device.
- 10 Do not subject your watch to severe impact, avoid dropping.

Care for your Bertucci™ watch (cont.):

Most important: Keep crown (setting knob) screwed or rethreaded down.

Your watch is equipped with a screw down crown (setting knob). This premium feature is the best design in order to maximize water-resistance and durability to ensure protection of the watch movement.

Please note: After setting the time and/or date, it is critical that the crown is tightened down by pushing in and **gently turning clock-wise (to the right) simultaneously in order rethread crown down.**

Failure to do so will cause the watch's internals to be flooded with water and voiding warranty.

Following this simple practice will extend the watch life dramatically.

screw down crown



correct

not screwed down crown



incorrect

Genuine Bertucci™ DX3® watch bands:

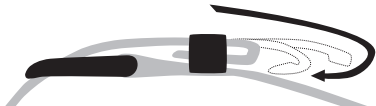
The performance band for Bertucci™ Performance Field Watches.™ Our U.S. patented DX3® bands are a unique design made for only Bertucci™ watches.

Three high performance materials to choose from:

Top Grain Leather – Manufactured from high performance top quality water resistant leather with durable box stitch construction and stainless steel hardware.

Tridura™ Ultra Duty – U.S. patented polyurethane coating over webbing, welded construction, and metal hardware provide extreme durability. Band may be cut to length for smaller wrists and will not fray.

Heavy Duty 2-Ply Nylon – U.S. patented one piece design features military specification nylon, rugged box stitch construction, all metal hardware. The U.S. patented nylon band features a design that allows the excess band material to be folded & “tucked-under” the keeper (see illustration). Short and long nylon bands available.



Bertucci™ DX3® watch bands sizing:

See case back engraving for case type. Bands require no tools to change, simply slide the old band out and the new band in.

| Band Size: | Case Type: |
|------------|------------------------------------|
| 5/8" band | M-1S |
| 3/4" band | A-1S, C-1T |
| 7/8" band | A-2T, A-2S, A-3T, B-1T, D-1T, G-1T |
| 1" band | A-4T |

Note: Use only genuine Bertucci™ replacement bands. Available in a variety of materials, colors, and sizes for your watch.

Replacement Bertucci™ DX3® watch bands:

To order: Email us at askenzo@mhberty.com to use Paypal or call 866-665-7327.

To see a full listing of all bands available for your watch go to www.bertucciwatches.com or your authorized dealer.

Some of our most popular band styles:

NYLON:

- #29 - 5/8" Black
- #56 - 5/8" Dark Khaki
- #1 - 3/4" Black
- #2 - 3/4" Olive
- #40 - 3/4" Dark Khaki

NYLON:

- #4 - 7/8" Black
- #5 - 7/8" Olive
- #27 - 7/8" Khaki
- #28 - 7/8" Drab
- #36 - 7/8" Dark Khaki
- #73 - 1" Black
- #75 - 1" Dark Khaki

TRIDURA™:

- #31 - 7/8" Black
- #32 - 7/8" Foliage Green
- #55 - 7/8" Coyote Brown

LEATHER:

- #43 - 3/4" Black Latigo
- #9 - 7/8" Olive Brown Duration
- #10 - 7/8" Black Duration
- #46 - 7/8" Chestnut Latigo
- #76 - 7/8" British Tan Vintage Latigo
- #80 - 7/8" Military Black Vintage Latigo
- #79 - 1" Bavarian Brown w/ post screws

Warranty information:

Every Bertucci™ watch is carefully designed, manufactured and inspected to ensure it meets our Promise Of Performance™ to you. This is backed up by a 3 year warranty on the watch head and 1 year on the band.

In the event of a malfunction, please follow these steps (for band only, go to directly to **Step 4**).

Step 1 Determine whether the watch is in warranty. If the watch is in warranty, please follow the remaining steps. If it is NOT in warranty, please refer to the **Refurbishment Section** (pg. 18).

Step 2 Determine whether the watch has been abused. If not abused, please follow the remaining steps. If the watch IS abused (for example, crown is not screwed down and watch is water damaged, or there is visual evidence of high impact to case or crystal), please refer to the **Refurbishment Section** (pg. 18).

Step 3 Please have the battery checked by a local jeweler or professional watch service shop. Most malfunctions are simply battery related. If the battery is good, and watch is still not functioning correctly, please follow next **Step 4**. If battery is bad, please refer to **Battery Replacement Section** (pg. 20).

Step 4 Please return the defective watch (just the watch head, remove the band) or defective band to the dealer or send to us for exchange. Please send a note explaining the malfunction or use the Warranty Coupon (available on our web site: www.bertucciwatches.com)

Please contact us with any questions at **866-665-7327** or email us at askenzo@mhbertucci.com.

Return note with defective watch to include: name and address, phone number, description of watch (ex. A-2T nylon) and description of malfunction.

Send the malfunctioning watch to:
Bertucci Consumer Service – BCS
P.O. Box 7920
Gurnee, IL 60031 USA

Out of Warranty Refurbishment Program:

Should the watch be out of warranty (more than 3 years old), damaged, deemed abused, or water damaged as a result of not screwing the crown down, we offer our refurbishment program. The way it works is as follows:

- 1 Send us the out of warranty or damaged watch head to the below address.
Just the watch head, keep your band.
- 2 Include a note or use the Refurbishment form (available at our web site: www.bertucciwatches.com) advising nature of the problem (if known).
- 3 The note should also include your name, return address and phone number (see refurbishment form).
- 4 Check or money order made out to Bertucci Watches in the amount based on the refurbishment pricing, on page 19.
- 5 We will send out a fully refurbished watch to your shipping address.
- 6 The refurbished watch includes:
 - refurbished, recertified, and cleaned watch head.
 - new band • new battery • 1 year warranty
- 7 The refurbished watch sent back may include some minor or cosmetic scratches to the case only. You may not get back your exact watch.

Contact us with any questions you may have about the refurbishment program.

Refurbishment Pricing: (add \$9 for shipping)

| | |
|--|------------------------------------|
| A-1S – \$48 | B-1T, C-1T – \$85 |
| A-2S, M-1S – \$54 | A-2T (w/10 year Li Battery) – \$90 |
| A-2T – \$60 | A-3T Vintage (w/sub second) – \$90 |
| A-2T, B-1T (w/EL light) – \$82 | A-4T Vintage – \$90 |
| A-2T Vintage, High Polish, Procolor – \$85 | G-1T Durato – \$115 |
| A-3T Vintage, D-1T Vintage – \$85 | Tritium light styles – \$190 |

Send your watch to:

Bertucci Consumer Service – BCS
P.O. Box 7920
Gurnee, IL 60031 USA

Battery information:

Bertucci™ watches use common batteries that are readily available. The case back is engraved with the model/case and battery type. Batteries should be replaced by a local jeweler or professional watch service for a moderate price. Do not attempt to remove the case back as it requires a special tool and skills. Proper replacement of batteries is critical to ensure the long life of your Bertucci™ field watch. Actual battery life may vary based on environmental factors and usage pattern. Replacement battery brands may have different battery numbers, check battery equivalency reference.

Estimated Battery Life:

| | |
|---------|--|
| 3 year | A-1S, A-2S, M-1S, A-2T |
| 2 year | A-2T, B-1T (w/EL light) |
| 5 year | A-2T Vintage, High Polish, Procolor |
| 5 year | A-3T Vintage, A-4T Vintage, B-1T, C-1T, D-1T Vintage |
| 2 year | A-3T Vintage (w/sub second) |
| 5 year | G-1T Durato |
| 10 year | A-2T Lithium battery equipped styles |

Thank You!

Thank you for your purchase of a Bertucci™ Performance Field Watch.™ You've made an excellent choice. You'll be pleased with your Bertucci™ watch for years to come.

In The Field With Bertucci™

We would like to hear from you, so please let us know your stories, testimonials, or experiences you've had using your Bertucci™ field watch.

Please let us know of any questions or comments you may have.



Send responses to: askenzo@mhbertucci.com