



*The World's Leading Label & RFID Software*

**Getting Started with  
the BarTender  
Application Suite**

Overview, installation,  
and basic usage

**(English Edition)**





*The World's Leading Label & RFID Software*

**Getting Started with  
the BarTender  
Application Suite**

Overview, installation,  
and basic usage

**(English Edition)**

Rev. 10.09.23.1047  
English



© Copyright Seagull Scientific, Inc. 2001-2010. All rights reserved.

Information in this document is subject to change without notice. No part of the publication may be reproduced, transmitted, transcribed, stored in a retrieval system, or translated into any language in any form or by any means without the written permission of Seagull Scientific, Inc.

*HASP® is a registered trademark of Aladdin Knowledge Systems, Ltd.*

*Microsoft, Windows, Windows Vista, the Windows Vista Start button, and the Windows logos are trademarks, or registered trademarks of Microsoft Corp. in the USA and/or other countries.*

*SQL Server™ is a trademark, of Microsoft Corporation.*

*Oracle® is a registered trademark of Oracle Corporation.*

*SAP™ is a trademark of SAP Aktiengesellschaft.*

*The Ready for IBM Websphere software mark and the trademarks contained therein are trademarks of IBM Corp. IBM is not the licensor of this Business Partner's product and does not make any warranties regarding this Business Partner's product.*

*BarTender® is a registered trademark of Seagull Scientific, Inc.*

All other registered names and trademarks referred to in this manual are the property of their respective companies.

---

# Table of Contents

<b>Chapter 1: Introduction to the BarTender Application Suite .....</b>	<b>1</b>
<b>Overview.....</b>	<b>1</b>
BarTender .....	1
Drivers by Seagull .....	1
<b>Integration.....</b>	<b>2</b>
Commander .....	2
BarTender .NET SDKs.....	3
<b>System Administration .....</b>	<b>4</b>
BarTender Security Center .....	4
Printer Maestro.....	4
Librarian .....	5
History Explorer.....	6
Seagull License Server .....	6
System Database Setup .....	7
<b>Printing Utilities .....</b>	<b>7</b>
Web Print Server.....	7
Reprint Console .....	8
Print Station.....	8
Batch Maker .....	9
<b>Chapter 2: Installation and Activation.....</b>	<b>11</b>
<b>Installation Procedures.....</b>	<b>11</b>
Installing the Security Key (Hardware Keyed Licenses Only).....	11
Installing Seagull License Server (Automation Editions Only).....	12
Installing BarTender and Companion Applications .....	12
Installing the BarTender System Database .....	13
Creating and Managing the System Database .....	13
Logging Data and Storing Files in the System Database .....	13
<b>Installing, Upgrading, and Removing Printer Drivers .....</b>	<b>14</b>

Overview .....	14
Driver Installation Instructions .....	14
Upgrading Printer Drivers .....	14
Removing Printer Drivers .....	15
<b>Installing BarTender Web Print Server .....</b>	<b>15</b>
<b>Activation .....</b>	<b>15</b>
<b>Chapter 3: Using BarTender .....</b>	<b>17</b>
<b>Overview .....</b>	<b>17</b>
Creating a New Label Format .....	18
Specifying the Correct Printer .....	18
Specifying the Label Size .....	18
Creating a Text Object .....	20
Creating a Bar Code or RFID Object .....	20
Selecting and Deselecting an Object .....	20
Moving a Label Object .....	21
Stretching and Resizing Objects .....	21
Copying, Cutting, and Pasting a Label Object .....	21
Deleting an Object from the Label Viewing Area .....	22
Specifying the Data Source of a Text or Bar Code Object .....	22
Setting Up a Connection to a Database for Printing .....	24
Changing the Symbology of a Bar Code .....	25
Changing the Font .....	25
Other Modifications to the Properties of Label Objects .....	25
Importing a Picture .....	26
Printing the Label .....	26
Starting with a Preexisting BarTender Format .....	27
The BarTender Toolbox .....	27
<b>Getting BarTender Help .....</b>	<b>28</b>
<b>Chapter 4: The Commander Integration Utility .....</b>	<b>29</b>
<b>What Is Commander? .....</b>	<b>29</b>
<b>Common Procedures for Commander .....</b>	<b>30</b>
Launching Commander .....	30
Creating or Modifying a Commander Task List .....	30

---

Deleting, Moving, and Reordering Commander Tasks .....	30
Running a Commander Task List .....	31
For More Information.....	31
<b>Appendix A: Serial Communications .....</b>	<b>33</b>
Overview .....	33
Setting and Cable Issues .....	33
Serial Port Settings .....	34
Setting Serial Parameters on your Printer .....	34
Setting Serial Parameters in Windows.....	35
Using the Correct Serial Cable .....	35
<b>Appendix B: Configuring for Performance.....</b>	<b>37</b>
Performance Tips.....	37
Printer Capabilities That Are Not Available To All Programs.....	38
<b>Appendix C: Printer Driver Troubleshooting.....</b>	<b>39</b>
Step-by-Step Procedure for Solving Printing Problems.....	39
<b>Appendix D: Technical Support.....</b>	<b>43</b>
You Must Register Your Software to Receive Support.....	43
You Must Call From Next to Your Computer .....	43
About Tech Support for Visual Basic Script .....	43
Technical Support Contact Information.....	43
<b>Index.....</b>	<b>45</b>

# Chapter 1: Introduction to the BarTender Application Suite

## Overview

In addition to the main design and print application, the BarTender Application Suite includes a variety of additional companion applications and other components. Together, they provide a level of power and flexibility not available in any other label software package.

Depending on the BarTender edition you purchased, some applications may only be available for use during the first 30 days after your installation. Except as noted, the installed components can be run from the BarTender folder of the Windows **Start** menu.

## BarTender



BarTender is the main application used to design and print labels and bar codes. The two Automation editions of BarTender also support the encoding of RFID tags.

### More Information

*Online Help:* Press F1 from within the application.

The “Using BarTender” chapter in this document covers basic usage.

## Drivers by Seagull



Seagull Scientific developed the very first true Windows printer drivers for thermal printers. Today we produce the best, most highly-regarded printer drivers in the world, with support for more than 2,000 label printer models.

BarTender will work with printer drivers from just about every printer manufacturer in the world, including those for laser, inkjet and dot-matrix printers. However, when printing on label printers, BarTender delivers the fastest possible performance when using its own Drivers by Seagull™.

### More Information

See the [Installing, Upgrading, and Removing Printer Drivers](#) section of this document.

*White paper:*

[http://www.seagullscientific.com/ftp/whitepapers/WhitePaper\\_TheAdvantageOfDriversBySeagull.pdf](http://www.seagullscientific.com/ftp/whitepapers/WhitePaper_TheAdvantageOfDriversBySeagull.pdf)

## Integration

All BarTender editions except for Basic can read external data. However, only the two Automation editions can be controlled from within other software. Some of the methods are summarized in this section.

### More Information

*White Paper:*

[http://www.seagullscientific.com/ftp/whitepapers/WhitePaper\\_IntegrationOverview.pdf](http://www.seagullscientific.com/ftp/whitepapers/WhitePaper_IntegrationOverview.pdf)

## Commander

(Only supported after 30 days with the two Automation editions of BarTender.)



Commander is a middleware utility that enables you to control BarTender from within other software in situations when it is not convenient or possible to do so using the BarTender SDKs. When a software application needs to generate labels, it performs a triggering action, such as placing a file in a location of your choosing on the network or sending information through a TCP/IP socket connection. Commander detects these “triggers” and then “wakes up” BarTender so it can merge your data into the label design and automatically print your labels.



## More Information

*Online Help:* Press F1 from within the application.

*White Papers:*

[http://www.seagullscientific.com/ftp/whitepapers/WhitePaper\\_Integration\\_Overview.pdf](http://www.seagullscientific.com/ftp/whitepapers/WhitePaper_Integration_Overview.pdf)

[http://www.seagullscientific.com/ftp/whitepapers/WhitePaper\\_Commander.pdf](http://www.seagullscientific.com/ftp/whitepapers/WhitePaper_Commander.pdf)

[http://www.seagullscientific.com/ftp/whitepapers/WhitePaper\\_Commander\\_Examples.pdf](http://www.seagullscientific.com/ftp/whitepapers/WhitePaper_Commander_Examples.pdf)

## BarTender .NET SDKs

Before the BarTender .NET SDKs became available, the only way to programmatically control BarTender from within other software was through BarTender's ActiveX Automation interface. This continues to be a powerful and flexible way to control BarTender. However, .NET programmers now have a faster, easier option. The BarTender .NET Software Development Kits (SDKs) include pre-written source code and extensive documentation that greatly simplify the task of writing code to control BarTender. Now, using either C# or VB.NET, you can seamlessly integrate BarTender functionality into your applications without having to write from scratch the most commonly-needed routines for automated label printing.

BarTender's .NET SDKs include:

- ◆ Sample source code and project files, including a sample web application
- ◆ Extensive documentation
- ◆ Integration with Visual Studio

## More Information

*White Paper:*

[http://www.seagullscientific.com/ftp/whitepapers/WhitePaper\\_BarTender's.NET\\_SDKs.pdf](http://www.seagullscientific.com/ftp/whitepapers/WhitePaper_BarTender's.NET_SDKs.pdf)

## System Administration

Several utilities are included to help you manage and secure your label printing environment.

### BarTender Security Center

(Only supported after 30-days with the two Automation editions of BarTender. Some features are only available in the Enterprise Automation edition.)



The BarTender Security Center allows a system administrator to define permissions that control which users and groups of users can perform specific actions within each application of the BarTender Application Suite. For example, you can specify that some users can both modify the label format designs and print, while other users are only allowed to print. Security Center also supports “Digital Signatures,” which allows you to verify a user’s identity by having them enter their password when they perform specific actions.

#### More Information

*Online Help:* Press F1 from within the application.

*White Paper:*

[http://www.seagullscientific.com/ftp/whitepapers/WhitePaper\\_LabelSystemSecurity.pdf](http://www.seagullscientific.com/ftp/whitepapers/WhitePaper_LabelSystemSecurity.pdf)

### Printer Maestro

(Not all Printer Maestro features listed below are available in all editions after the initial 30 days of use.)



The Printer Maestro software application consolidates multiple print management functions within Windows into a single view to make it easier to manage printers and print jobs. In addition, Printer Maestro introduces exciting new features for managing printer supplies.

Printer Maestro features include:

- ◆ Printer and Print Job Management
  - Display and manage the status of every printer and print job on a network in a single, convenient, customizable view. (Without Printer Maestro, Windows has to pop-up a view for each different printer).
  - Warns you of printer and job errors by email or text message.
  - Makes it easier to configure printer settings.
- ◆ Printer Supplies Management (Enterprise Automation edition only)
  - Tracks usage of media in printers and transmits “low media” warnings.
  - Tracks inventory of printing supplies in storage, such as labels, ribbon, print heads, etc. and transmits “low inventory” warnings.

### More Information

*Online Help:* Press F1 from within the application.

*White Paper:*

[http://www.seagullscientific.com/ftp/whitepapers/WhitePaper\\_Printer\\_Maestro.pdf](http://www.seagullscientific.com/ftp/whitepapers/WhitePaper_Printer_Maestro.pdf)

### Librarian

(Available for use after the first 30 days only with the Enterprise Automation edition.)



BarTender Librarian lets large groups of users, designers and administrators cooperatively and securely manage the storage and revision of label formats and other files. Librarian stores files in the BarTender System Database, instead of “loose” on your hard drive. You can then define custom states for files (such as Proposed, Approved and Published) and workflow management rules for transitions between these states. You can easily view your revision history and even rollback to old versions of your files if you need to.

## More Information

*Online Help:* Press F1 from within the application.

*White Paper:*

[http://www.seagullscientific.com/ftp/whitepapers/WhitePaper\\_Librarian.pdf](http://www.seagullscientific.com/ftp/whitepapers/WhitePaper_Librarian.pdf)

## History Explorer

(Only supported after 30-days with the two Automation editions of BarTender.)



History Explorer is an application that lets you view logged information about labels you have printed in the past and any messages created by the applications that processed the print jobs. History Explorer is required in order to be able to audit label printing activity with BarTender. For History Explorer to work, a BarTender System Database (see the section on [BarTender System Database](#) ) must be set up to allow logging from the BarTender Application Suite.

## More Information

*Online Help:* Press F1 from within the application.

*White Paper:*

[http://www.seagullscientific.com/ftp/whitepapers/WhitePaper\\_History\\_Explorer.pdf](http://www.seagullscientific.com/ftp/whitepapers/WhitePaper_History_Explorer.pdf)

## Seagull License Server

(Only required by the two Automation editions of BarTender.)



Seagull License Server (SLS) is a software utility that monitors and enforces the maximum allowable number of printers that can be used by the two Automation editions. It runs unattended and invisibly on any computer on your network. SLS interacts with BarTender seamlessly so that BarTender users need not even know that it is running.

## More Information

*Online Help:* Press F1 from within the application. Also see the “Licensing Setup Dialog” topic in BarTender’s online help.

*White Paper:*

[http://www.seagullscientific.com/ftp/whitepapers/WhitePaper\\_LicensingForBarTendersAutomationEditions.pdf](http://www.seagullscientific.com/ftp/whitepapers/WhitePaper_LicensingForBarTendersAutomationEditions.pdf)

## System Database Setup

(For optional use in the two Automation editions of BarTender.)



System Database Setup is a utility that helps you setup your BarTender System Database. It may be hosted by either an SQL Server or an SQL Express database. The database is not necessary in order to use BarTender, but it is required in order to log information about BarTender print jobs and record messages from the rest of the BarTender Application Suite. This allows for future auditing using History Explorer and use of the label Reprint Console. It is also required in order to use Librarian.

## More Information

*Online Help:* Press F1 from within the application.

*White Paper:*

[http://www.seagullscientific.com/ftp/whitepapers/WhitePaper\\_BTSystemDatabase.pdf](http://www.seagullscientific.com/ftp/whitepapers/WhitePaper_BTSystemDatabase.pdf)

## Printing Utilities

### Web Print Server

BarTender Web Print Server is an ASP.Net application that comes with the Enterprise Automation edition of BarTender. It lets you use most common web browsers to connect to and control a centralized copy of BarTender running on

a server. You can select BarTender labels and output them on a printer anywhere on your LAN, WAN, or even to remote printers on the internet.

### More Information

*White Paper:*

[http://www.seagullscientific.com/ftp/whitepapers/WhitePaper\\_BarTenderWebPrintServer.pdf](http://www.seagullscientific.com/ftp/whitepapers/WhitePaper_BarTenderWebPrintServer.pdf)

## Reprint Console

(Only supported after 30 days with the two Automation editions of BarTender.)



Reprint Console allows you to quickly reprint previously printed labels. An entire job, or just a portion of a job can be selected. This is particularly useful in automated printing environments, because the sequence of actions required to reprint the same label(s) from within other programs might be impossible to recreate. For example, information in the other program's database may have changed. Reprint Console requires the use of a BarTender System Database, which is discussed in a previous chapter.

### More Information

*Online Help:* Press F1 from within the application.

*White Paper:*

[http://www.seagullscientific.com/ftp/whitepapers/WhitePaper\\_ReprintConsole.pdf](http://www.seagullscientific.com/ftp/whitepapers/WhitePaper_ReprintConsole.pdf)

## Print Station



The BarTender “Print Station” utility gives non-technical users easy “point and click” selection and printing of labels without ever having to see the inside of a label design program.

## More Information

*Online Help:* Press F1 from within the application.

*White Paper:*

[http://www.seagullscientific.com/ftp/whitepapers/WhitePaper\\_PrintStation.pdf](http://www.seagullscientific.com/ftp/whitepapers/WhitePaper_PrintStation.pdf)

## Batch Maker

(Not supported after 30 days with the Basic edition of BarTender.)



The Batch Maker utility makes it easy to specify a list of multiple label formats to print as a single “batch.” Batches can be printed from within Batch Maker itself, as well as from BarTender, Print Station, and Windows Explorer.

## More Information

*Online Help:* Press F1 from within the application.

*White Paper:*

[http://www.seagullscientific.com/ftp/whitepapers/WhitePaper\\_BatchMaker.pdf](http://www.seagullscientific.com/ftp/whitepapers/WhitePaper_BatchMaker.pdf)

## Chapter 2: Installation and Activation

### Installation Procedures

The BarTender components that you may need to install depend on the edition you purchased and the features you require. The BarTender components must be installed in the order that they are listed below. The BarTender CD-ROM will automatically display an opening screen from which you can install all of the software components.

After installing the components, you will be prompted to activate your software, which is required. (See [Activation](#) for details.)

### Installing the Security Key (Hardware Keyed Licenses Only)

If your edition of BarTender comes with a HASP<sup>®</sup> security key, it must be installed on either a parallel or USB port of the computer. (With the two Automation editions, the key goes on the computer that will run Seagull License Server. See [Installing Seagull License Server](#) below.) Without this security device installed, BarTender will operate only in demonstration mode: one letter or number from each text field and bar code will be randomly changed when labels are printed.

#### Installing the HASP4 Security Key Driver

1. Place the BarTender CD-ROM into your CD drive. The opening screen will appear automatically.
2. Click **BarTender Application Suite** on the opening screen. Then click **HASP4 Security Key Driver** and follow the instructions given by the setup program.
3. Continue with the appropriate instructions, below, depending on your key type:

#### *Parallel Port Key Installation*

1. Plug the key into a parallel port on your computer, preferably LPT1.



2. Attach the security keys from other vendors, if any, to the back of the Seagull Scientific key.
3. Plug the cable, if any, directly into the key itself.

### **USB Port Key Installation**

Plug the key into an available USB port.

## **Installing Seagull License Server (Automation Editions Only)**

If you have one of the two Automation editions of BarTender, install the Seagull License Server before installing BarTender. This application can be installed on any computer on the network, including the same computer that will be running BarTender.

1. Choose a computer on your network to be the host of the Seagull License Server. It can be any computer, so long as it is accessible through your network from the workstations on which you run BarTender.
2. If you are not already viewing the opening screen, place the BarTender CD-ROM into your CD drive. The opening screen will appear automatically.
3. Click **BarTender Application Suite** on the opening screen. Then click **Seagull License Server (SLS)**.
4. You will be given the opportunity to run the **Activation Wizard** near the end of the installation. If you run it, follow the instructions on screen. (See [Activation](#) below.)

## **Installing BarTender and Companion Applications**

Perform these steps on every computer on which you plan to run BarTender.

1. If you are not already viewing the opening screen, place the BarTender CD-ROM into your CD drive. The opening screen will appear automatically.
2. Click **BarTender Application Suite** on the opening screen. Then click **BarTender** and follow the instructions given by the setup program.

This will by default also install the following companion applications:

- ◆ Commander
- ◆ Security Center

- ◆ Librarian
- ◆ History Explorer
- ◆ Printer Maestro
- ◆ System Database Setup
- ◆ Reprint Console
- ◆ Print Station
- ◆ Batch Maker

Depending on the edition you purchased, some of the above applications may only be available as 30-day “Trial Features.”

In order to use some of the companion applications, you must create a new BarTender System Database or connect to an existing one. See the sections on [BarTender System Database](#) for details.

## Installing the BarTender System Database

(This BarTender System Database topic only applies to the two Automation editions.)

## Creating and Managing the System Database

If you do not already have a System Database installed, the BarTender Setup utility will automatically start the System Database Setup Wizard for you. You will have the option of using your own copy of Microsoft SQL Server as the System Database or Microsoft SQL Express, which is available for free.

If you decide not to run the System Database Setup Wizard right away, you can manually select this option in the future from within the BarTender folder of the Windows **Start** menu.

## Logging Data and Storing Files in the System Database

Most applications in the BarTender Application Suite can log information to the System Database. However, each application has its own logging or

storage options that first need to be enabled. Check the help system for each application.

## Installing, Upgrading, and Removing Printer Drivers

### Overview

Starting with BarTender 8.0, Drivers by Seagull™ began shipping with the Seagull Driver Wizard utility.

#### **A Warning About Microsoft’s “Add Printer Wizard:”**

*We strongly recommend that you use Seagull’s Driver Wizard to install, remove, and upgrade drivers. The “Add Printer Wizard” that comes with Windows does not always properly perform driver upgrades.*

### Driver Installation Instructions

1. Turn off your printer, connect the appropriate cable, and then turn on the printer.
2. If your printer supports Plug-and-Play and you have connected it using a USB or Parallel cable, then the Windows Add Hardware Wizard will automatically detect the printer and display a driver install dialog. Be sure to click **Cancel** and *not* install the driver using this Windows wizard.
3. Instead, run the Driver Wizard utility from the folder where the Seagull printer driver files are located. (The default location is C:\Seagull)
4. Select **Install Printer Drivers** and complete the wizard.
5. Your Seagull driver(s) should now be properly installed.

### Upgrading Printer Drivers

Do *not* use the Microsoft Windows Add Printer Wizard to upgrade printer drivers. It sometimes does not upgrade all driver files correctly, which leaves printer drivers in a corrupted state.

Instead, use Seagull's Driver Wizard to upgrade existing printer drivers:

1. Run the Driver Wizard utility from the folder where the driver files are located. (The default location is C:\Seagull)
2. Select **Upgrade Printer Drivers** and complete the wizard.

## Removing Printer Drivers

Driver Wizard may be used to remove printer drivers from the system.

1. Run the Driver Wizard utility from the folder where the driver files are located. (The default location is C:\Seagull)
2. Select **Remove Printer Drivers** and complete the wizard.

## Installing BarTender Web Print Server

This application is only available with the Enterprise Automation edition. To install this option:

1. If you are not already viewing the opening dialog of the install program, place the BarTender CD-ROM into your CD drive. The opening dialog will appear automatically.
2. Click **BarTender Application Suite**.
3. Click **BarTender Web Print Server** and follow the instructions.

## Activation

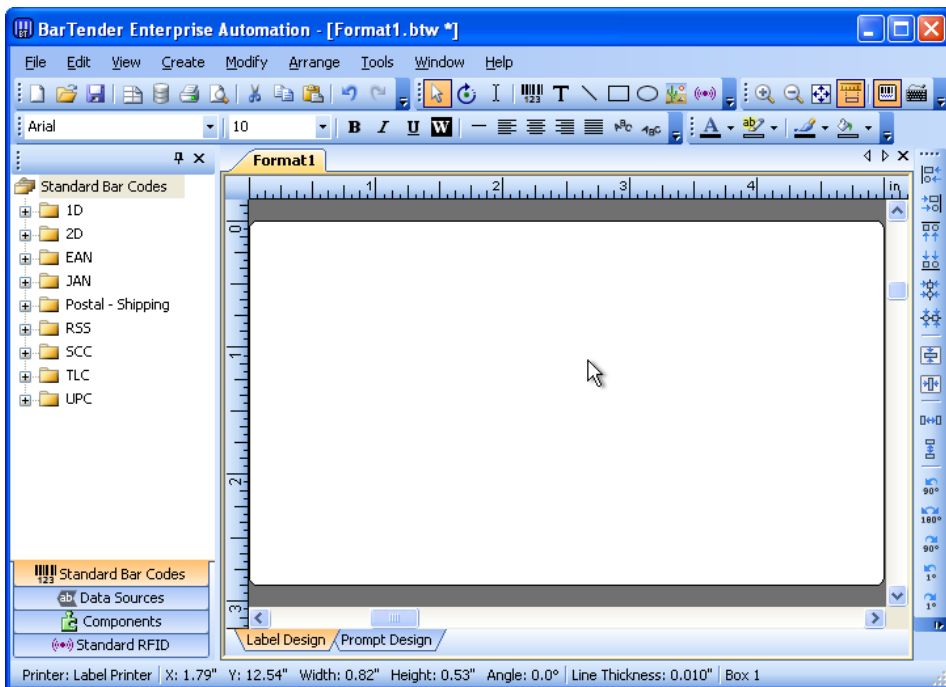


During the installation, you will have the opportunity to activate your software. Activation is a quick, easy, anonymous process that unlocks a software product for unlimited use and helps combat software piracy. When you choose to activate, an **Activation Wizard** will run. Click its **Help** button for more information about activation and privacy.

## Chapter 3: Using BarTender

### Overview

This chapter guides you through the process of designing labels, modifying their formats, and specifying the data you want to print. Begin by running BarTender. A blank label is displayed and your on-screen mouse cursor should be in pointer mode (shaped like an arrow).



## Creating a New Label Format


**To begin a new label format:**

1. Select **New** on the **File** menu. The **New Format Wizard** will open.
2. The **New Label Format Wizard** guides you through the steps needed to start your format design.

If you prefer not to use the wizard, follow the instructions in the next two sections.

## Specifying the Correct Printer

The first step in designing any label format is to specify the printer that will most often be used to print the labels made from the format. This reduces the chance that the labels will contain fonts that the printer cannot print quickly, and the chance that the size of the label format will exceed the printer's memory.


1. Click the printer button  on the **Main** toolbar, or **Print** in the **File** menu, to display the **Print** dialog.
2. Click the down arrow on the right side of the **Name** option to display a list of installed printer drivers.
3. Click the name of the printer to which you will be printing.

**Note:**

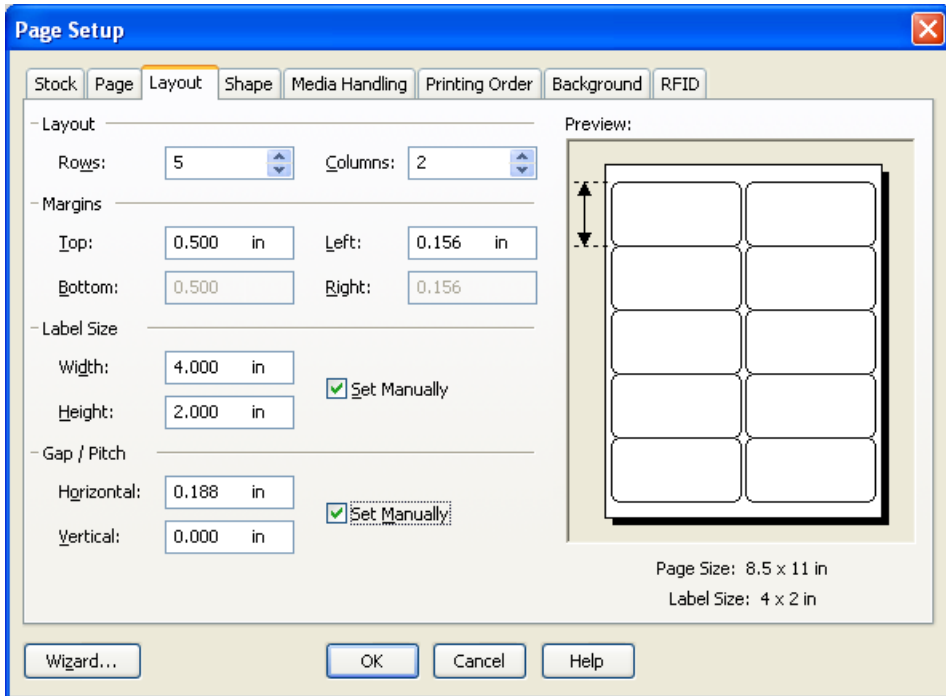
If the desired printer is not listed, use the Seagull Driver Wizard to install its printer driver. Refer to [Installing, Upgrading and Removing Printer Drivers](#).

4. Click **Close**.

## Specifying the Label Size

1. Display the **Page Setup** dialog by either clicking the page setup button  on the **Main** toolbar, clicking **Page Setup** in the **File** menu, or double-clicking on the blank part of the label viewing area.


2. Click the **Stock** tab and select the label stock manufacturer from the **Category** list. (If your label stock manufacturer is not listed, skip to step 4.)
3. Select the stock from the **Stock Name** list. (If your stock is not listed, proceed with step 4, otherwise click **OK**.)
4. Click the **Page** tab and specify the **Page Size** and the **Orientation** (either **Portrait** or **Landscape**).



5. Click the **Layout** tab and specify the page margins, and the number of rows and columns. (These options are usually available for laser printers only, but occasionally label stock for thermal printers may have columns and/or rows.)
6. To specify the dimensions of the labels, check the **Set Manually** box and use the **Height (of Label)** and **Width (of Label)** boxes. (BarTender will set the height and width of your label automatically if the **Set Manually** box is not checked.)

7. Click **OK**.

## Creating a Text Object

1. Click the create text button  on the **Main** toolbar.
2. Move the cursor into the label viewing area and click where the center of the object should be located.



### Note:

You can also use the BarTender Toolbox to add objects to a label. Refer to [The BarTender Toolbox](#) below.

## Creating a Bar Code or RFID Object

1. Open the **Standard Bar Code** or **Standard RFID** pane in the **Toolbox**. (Refer to [The BarTender Toolbox](#) below.) Each has a list of already configured objects. The bar codes have a symbology and other options already chosen. The RFID objects are configured with a tag type and a data format scheme.
2. Drag the desired object to the label.

### Notes:

If you prefer a bar code or RFID object with default values in all its properties, you can click the bar code button  or RFID button  on the **Main** toolbar and then click on the label.

You must have one of the two Automation editions to add RFID objects to a label.

## Selecting and Deselecting an Object

To select any object, click it. When an object is selected, it has eight solid handles, one at each corner and one in the middle of each of the four sides, used for resizing the object. Click anywhere away from an object to deselect it.



## Moving a Label Object

The easiest way to change the position of an object in the label viewing area is to click and drag it to a new location using your mouse.

Refer to [Copying, Cutting, and Pasting a Label Object](#) below for how to move an object from one label format to another.

## Stretching and Resizing Objects

A label object is resized by clicking it once (to select it) and then dragging one of the small square handles that appear along the edges of the object.

1. Select the object and position the pointer cursor on one of the four corner handles to resize both height and width. To resize in only one direction, position the pointer on one of the side handles. When the cursor is properly positioned, it will turn into a thin arrow with points at both ends.
2. Click and drag the selected handle until the object is the desired size.

## Copying, Cutting, and Pasting a Label Object

### Using The Windows Clipboard

Any bar code or text object can be copied (or cut) and pasted to another label format, or to another place on the current label format, using the Windows clipboard, and the **Copy**, **Cut**, and **Paste** buttons. See your Windows documentation for details.

### Using Click and Drag

You can also click and drag an object to a new place on a label format. Doing this with the CONTROL key held down creates a copy at the new location.

Finally, you can right-click and drag to the desired location. Release the mouse button and a pop-up menu appears. Click **Copy Here** on the menu.

## Deleting an Object from the Label Viewing Area



Select the object and press the DELETE key or click **Delete** on the **Edit** menu. (To remove an object from the label viewing area, but save a copy of its specifications in the Windows clipboard at the same time, use the **Cut** command instead of the **Delete** command.)

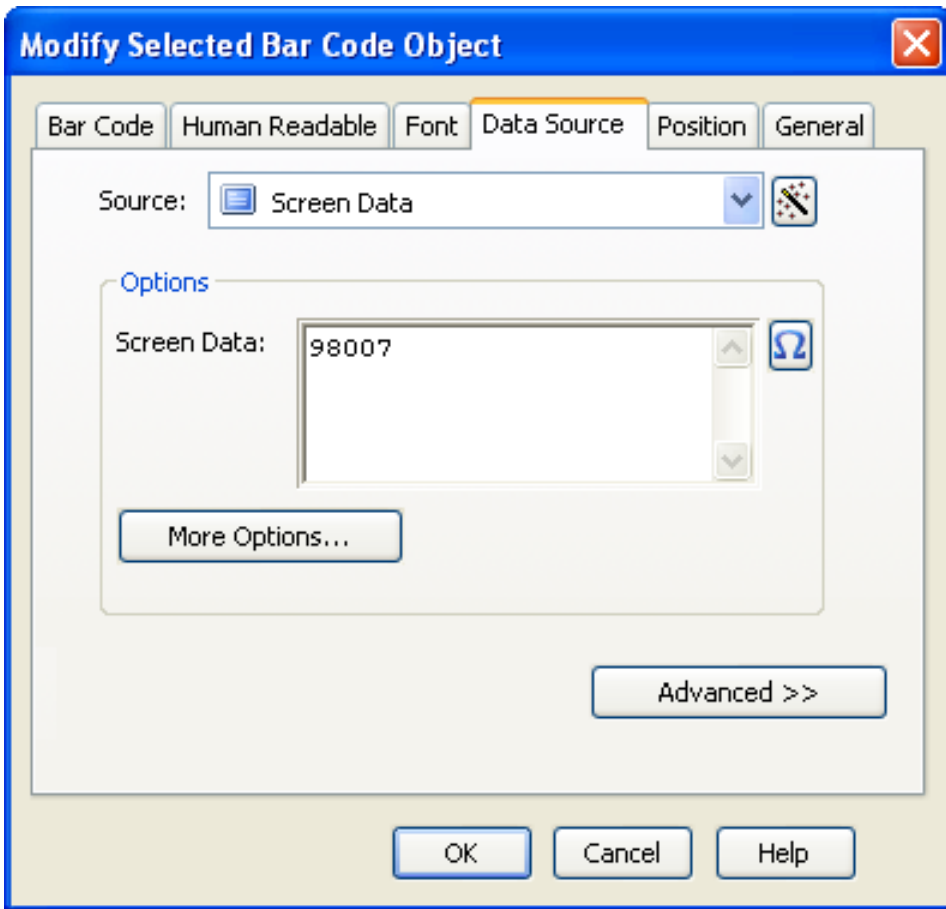
## Specifying the Data Source of a Text or Bar Code Object

Label data often must come from a variety of sources. Label formats made in BarTender can contain:

- ◆ Data from databases, including delimited text files, fixed-width text files, OLE DB, ODBC (Open Database Connectivity) databases and spreadsheets, and SAP™ IDocs
- ◆ Data generated from Visual Basic Scripts
- ◆ The system date and time on your computer
- ◆ Data entered directly onto a label at the screen


### To set a label object's data source:

1. Double-click on the label object whose label data you want to change. The **Modify Selected . . . Object** tabbed dialogs will be displayed.
2. If it is not already displayed, click on the **Data Source** tab to display the **Data Source** property page.
3. To be guided through the process of selecting a data source, click the data wizard button  to launch the **Substring Wizard**. Alternatively, continue with the following steps.
4. Select the desired data source from the **Source** drop down list, and then configure the source-specific parameters in the **Options** section of the tab. If you are selecting **Database Field** as the source and have not yet setup a connection to a database, then press the database connection setup button . See [Setting Up a Connection to a Database](#) below.



### To concatenate substrings from multiple data sources:

Sometimes you need to place information from two or more data sources into a single bar code or text object. You can do this by concatenating multiple data substrings so that they are output as a single string. Follow these steps:

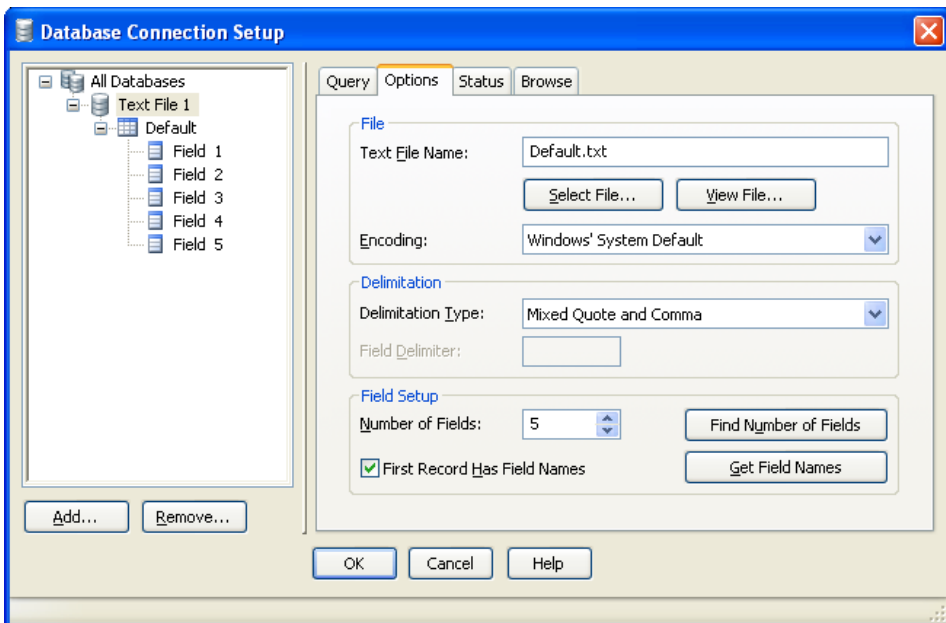
1. On the **Data Source** tab of the **Modify Selected . . . Object** dialog, click the **Advanced** button.
2. Create additional substrings by clicking the new substring button  on the toolbar below the **Substring List**.

Refer to BarTender's help for additional data-sourcing topics such as data validation, serialization, and prompting.


## Setting Up a Connection to a Database for Printing

Sometimes it is desirable to print labels from a list of data, such as a parts list or a list of customers. This requires reading label data from a database. BarTender can read from the following database types:

- ◆ Delimited and Fixed-Width Text Files
- ◆ Oracle<sup>®</sup>, Microsoft Access, Excel, and SQL Server<sup>™</sup>
- ◆ Other OLE DB Supported Databases
- ◆ ODBC (Open Database Connectivity) Supported Databases and Spreadsheets
- ◆ SAP IDocs



**To tell BarTender to read from a database:**

1. Open the **Database Connection Setup** dialog by clicking on the database connection setup button  on the **Main** BarTender toolbar. The **Add Database Connection Wizard** will display in the center of the dialog.
2. The **Add Database Connection Wizard** guides you through the steps needed to configure a connection to your database.

Refer to BarTender's help for information about joining tables, reading from multiple databases, and specifying queries.

## Changing the Symbology of a Bar Code

1. Double-click the bar code to display the **Modify Selected Bar Code Object** dialog.
2. Click the **Bar Code** tab.
3. Display the list of available bar code symbologies by clicking the down-arrow on the right of the **Symbology** box.
4. Click the name of the desired symbology.
5. Click **OK**.

## Changing the Font


1. Double-click the bar code or text object. The **Modify Selected . . . Object** dialog is displayed.
2. Click the **Font** tab.
3. Change the typeface name, size, italics, boldness, scale, and script as needed.
4. Click **OK**.

## Other Modifications to the Properties of Label Objects

Double-clicking any object displays the **Modify Selected . . .** dialog for that type of object. Click a tab to open the corresponding property page.

## Importing a Picture



This procedure should be used when the picture will not be changing from label to label.

1. Click the create picture button  on the **Main** toolbar.
2. Click where you want the picture located. A sample picture appears on the label format.
3. Double-click the picture to display the **Modify Selected Picture** dialog.
4. Leave the **Type** option set to **Embedded Picture**, but click the **Select Picture** button to display the **Select Picture** dialog.
5. The **Select Picture** dialog is a standard Windows directory navigation dialog. Use it to locate and double-click the picture file you want to import. BarTender automatically returns you to the **Modify Selected Picture** dialog.
6. Click **OK**.

After you have placed the picture in the label viewing area, you may change its position as explained in [Moving a Label Object](#) above.

You can also import a picture from a database. Refer to the online help for complete instructions.

## Printing the Label

1. Click the printer button  on the **Main** toolbar, or the **Print** option in the **File** menu, to display the **Print** dialog.
2. Confirm that the correct printer name is selected.
3. If any of the objects in your label format use data from a database file, the **Use Database** box should be checked. You can use the database connection setup button  to display the **Database Connection Setup** dialog.
4. Type the number of copies desired of each label into the **Identical Copies of Label** option.
5. Click the **Print** button and BarTender will begin printing your labels.

## Starting with a Preexisting BarTender Format

BarTender comes with some predesigned label formats. If one of them is close to your needs, it may be faster for you to modify it rather than design a complete label format.

### To view the predesigned label formats:

1. Select **File**.
2. Select **Open**.
3. In the **Format File Open** dialog, for Windows 2000, 2003 and XP navigate to **My Documents\BarTender\Formats\Samples**. In Windows Vista navigate to **Documents\BarTender\Formats\Samples**.
4. Single-click any label format name. A preview of the label format will appear in the dialog's **Preview** window.

If you find a label format close to what you need, double-click the name to display it in BarTender. Make any desired modifications and then save your changes to a new label format by using **Save As** instead of **Save**.

## The BarTender Toolbox

The BarTender Toolbox provides additional functions and alternative ways of accomplishing certain tasks. It contains four panes:

- ◆ **Components:** This functions as a storage bin in which you save bar codes, text, and other objects, or groups of objects, that you have configured. Reuse any stored component by dragging it onto a label.
- ◆ **Data Sources:** Use this pane to link objects quickly to particular data sources including previously configured database fields or substrings.
- ◆ **Standard Bar Codes:** From this pane you can drag bar codes that are already linked to particular symbologies.
- ◆ **Standard RFID:** From this pane you can drag RFID objects that are already configured with a data format type.

## Getting BarTender Help

You can access the help system by using any of the following procedures.

**To open the main help window:**

Click **BarTender Help** menu option in the **Help** menu.

**To access context-sensitive help:**

- ◆ From inside of a dialog, click the **Help** button or press F1.

or

- ◆ For help on a particular menu option, highlight the menu option and press F1.

**For further options in using and customizing the help, see the topic *Using BarTender's Online Help* in the help system.**

For help with Visual Basic select **Visual Basic Script Help** from the **Help** menu. This will open Microsoft's full Visual Basic help document in your default web browser.



## Chapter 4: The Commander Integration Utility

### What Is Commander?



Commander is a software utility, available with the two Automation editions of BarTender, that enables you to perform automatic label-printing using BarTender in situations where using command line or ActiveX automation is either not possible or not cost-effective. Commander can be run as an application or as a Windows service.

When an application needs labels, it simply creates a triggering event (called a “trigger”), such as placing a file in a location of your choosing on the network or sending an e-mail to an account of your choosing. Commander detects the arrival of this file (or e-mail) and then “wakes up” BarTender so it can flow your data into the label design and automatically print your labels.

A trigger file or message may be empty; but it can also contain data that will be read by BarTender, by another application that Commander launches, or by Commander itself. Because trigger-creating applications can include different content in different triggers, the tasks Commander will execute, and the data it uses, can be defined dynamically by the application.

For example, an in-house order fulfillment application enters data about an order into a database and saves an empty file named `NewOrder.dat` in a directory being watched by Commander. Commander finds the file and launches BarTender with a label format that has been configured to query the database about orders entered after a specified time. BarTender reads the data and prints the label. Commander then deletes the `NewOrder.dat` file and resumes monitoring the directory.





## Common Procedures for Commander

### Launching Commander

To launch Commander, double-click its icon on the BarTender branch of the **Start** menu. Below are the steps for the most common tasks.

### Creating or Modifying a Commander Task List

Commander actions are governed by tasks lists, which identify the triggers and the tasks to be performed in response. To create a task list:



1. Create a new task list file by clicking the new task list button  or selecting **New** from the **File** menu. If you are modifying an existing task list, click the open button  or select **Open** from the **File** menu; then browse to the task list file and click **Open**.
2. Start a new task definition by clicking the create new task toolbar button  or selecting **Add** from the **Tasks** menu. If you are editing an existing task, highlight it and click the properties toolbar button  or select **Properties** from the **Task** menu.
3. Use the **Task Options** dialog to enter details about how to trigger the task and to select and configure the commands that will execute when the task is triggered, then click **OK**.
4. Repeat steps 2 and 3 for every task needed on the task list, and then save the task list.

### Deleting, Moving, and Reordering Commander Tasks

Delete tasks from the list by highlighting the task and pressing the **DELETE** button or selecting **Delete** from the **Edit** menu. Use the **Cut**, **Copy**, and **Paste** items on the **Edit** menu to reorder tasks as needed or to move tasks from one task list to another.

## Running a Commander Task List

**To run a Commander task list:**

1. Open a task list by clicking the open button  or selecting **Open** from the **File** menu.
2. Enable tasks by highlighting each task you want to execute and selecting **Enable** from the **Task** menu.
3. Start trigger detection by clicking the start detection button  or selecting **Start Detection** from the **Detection** menu.

## For More Information

There are a number of sources of additional information on Commander.

### Commander Help

Commander comes with an extensive help system that includes detailed examples of Commander in use and additional information about its many powerful features.

### White Papers

These two white papers provide more details about using Commander:

[http://www.seagullscientific.com/ftp/whitepapers/WhitePaper\\_Commander.pdf](http://www.seagullscientific.com/ftp/whitepapers/WhitePaper_Commander.pdf)

[http://www.seagullscientific.com/ftp/whitepapers/WhitePaper\\_Commander\\_Examples.pdf](http://www.seagullscientific.com/ftp/whitepapers/WhitePaper_Commander_Examples.pdf)

# Appendix A: Serial Communications

## Overview

We recommend that you use a parallel port, USB port, or Ethernet connection if any of these is available on your printer. They improve printer performance and they eliminate confusion about what kind of cable to use.

However, some printers come with only a 9-pin or 25-pin (RS-232) serial port. This section covers some of the most common obstacles encountered with such old-style serial port communications and explains how to best configure Windows and select the proper serial cable.

### Note:

A more detailed discussion of serial communication issues is in the *Serial Communications* section of your printer driver's help.

## Setting and Cable Issues

If you don't set the serial ports on your computer and printer identically, communication will be unreliable. Moreover, there are dozens of ways that serial cables can be wired internally and one can't tell by looking at a serial cable how it is wired.

It is important to keep in mind that the program from which you will be printing, such as BarTender, does not control the serial communication between your computer and printer. Your mode of serial communications is controlled by:

- ◆ The serial port settings in your printer.
- ◆ The serial port settings on your computer.
- ◆ The type of serial cable being used.

## Serial Port Settings

Serial communication is governed by the following parameters. These must be set identically on both the printer and the computer.

- ◆ **Baud Rate:** This is the rate at which your printer will receive data (in bits-per-second). Common values are 2400, 4800, 9600, 19200, 38400, and 57600; with 9600 being the most common default setting. You want to set the highest rate at which your printer will work reliably. Use trial-and-error to find this rate after you have set your other serial communication parameters.
- ◆ **Data Bits** (sometimes called "Word" length or byte length): This specifies the number of bits used to encode each character sent to your printer. The most common value is **8**, although older printers may default to **7**.
- ◆ **Parity Bit:** This is an optional extra bit sometimes sent after the data bits of a transmitted character for the purpose of error checking. The possible settings are **Odd**, **Even**, and **None**.
- ◆ **Stop Bits:** This is the length of the pause at the end of a transmitted character. One stop bit is the most common setting.
- ◆ **Flow Control** (sometimes called "Handshaking"): This can be set to **software** (also called **Xon/Xoff**) or **hardware**. Never use the **None** setting for Flow Control. Disabling flow control can result in intermittently corrupted or completely failed print jobs.

### Note:

Refer to the topic *Understanding and Setting Flow Control (Handshaking)* in your printer driver's help for more information about choosing a handshaking method.

## Setting Serial Parameters on your Printer

You control serial port settings for your printer with either DIP switch settings or through a menu system accessed from the printer's front panel. Consult your printer's documentation for details.

Most printers do not allow changing all of the above parameters. Consult your printer manual to determine what settings are required, and be sure to make identical settings in Windows.

## Setting Serial Parameters in Windows

You first specified your serial port settings when you installed your printer driver, but if you need to change them, follow the procedure below to configure your serial port.

1. Click the Windows **Start** button.
2. In Windows 2000, 2003 and XP, select **Settings** and then **Printers**. In Windows Vista, select **Control Panel** and then **Printers**. In Windows 7, select **Start**, then **Devices and Printers**. The **Printers** (or **Devices and Printers**) folder will be displayed.
3. Click your right mouse button on the printer you wish to change your settings for and select the **Properties** option. The **Properties** dialog opens.
4. Click on the **Ports** tab.
5. To check your port settings, click on the **Configure Port** button. The **Port Settings** will be displayed.
6. Adjust your port settings as necessary and click **OK**.
7. Click **Close** to exit from the printer's **Properties** dialog.

## Using the Correct Serial Cable

Because a printer and computer both use serial ports that have their inputs and outputs on the exact same pins, a wiring configuration must be established that crosses over the outputs from one port to the corresponding inputs of the other port. A serial cable that connects signals by crossing them over in this manner is referred to as a null modem cable. By contrast, a straight-through serial cable, often used to connect a computer to a modem, connects pins 1, 2, 3, etc. on the computer to pins 1, 2, 3, etc. on the modem. If a straight-through serial cable were attached to a printer, an output signal from the computer would go, not to an input pin of the printer where it can be received, but to an output pin of the printer where it would be ignored.

**Note:**

Some newer thermal printers do require a straight-through cable. If there is any doubt, you should consult the documentation provided by the manufacturer.

**Cabling and Flow Control (Handshaking)**

It is also possible to cross over other lines so that the printer can offer the hardware handshaking option. (Refer to [Serial Port Settings](#) above.) Thus, it is important to consult your printer's manual to determine what cable is best. Some general purpose cable configurations, though they may contain more wires than all printers require, will work for a great variety of printers.

**Note:**

Refer to the help for your driver for pin and wiring diagrams of the null modem cables most commonly used by thermal printers, and for a special note on grounding.

## Appendix B: Configuring for Performance

### Performance Tips

Some of the graphics capabilities of Windows, including the ability to print TrueType fonts, can result in large amounts of information being sent to your thermal printer. Therefore, you should optimally configure your printer and personal computer.

The following tips contain information to help you maximize your printing speed and understand the difference between images that are formatted by Windows and images that are formatted by your printer.

#### **Avoid RS-232 Serial Communication Whenever Possible**

Some thermal printers come standard with only a 9-pin or 25-pin (RS-232) serial port. A parallel port, USB port, or Ethernet connection may be extra options. RS-232 serial communication will work fine if you only intend to use your printer's built-in bar codes and typefaces. However, if you want to take advantage of any of Windows' graphics capabilities, you will achieve significantly better performance if you use a parallel port, a USB port, or an Ethernet connection.

#### **Use Printer-based Objects and Fonts or Downloaded Fonts Whenever Possible**

Windows programs often print images, and non-downloadable fonts, by drawing them out dot-by-dot using bitmap graphics, a process that can slow the printer. Fortunately, many thermal printers can output bar codes, lines, boxes, and built-in (or downloaded) scalable text fonts using high-level commands. A Windows program can, for example, print using a font built into the printer by outputting a few quick control codes, instead of sending a large dot-by-dot bitmap drawing of the text image.



There are times when a Windows program must output an image as a bitmap. So keep in mind, that the more graphics that you send to your printer, the slower your printing speed will be.

## **Printer Capabilities That Are Not Available To All Programs**

Because most of the special capabilities built into thermal printers are different for each brand of printer, and because thermal printers are totally different from the more common printers used by Windows, it is just not possible for standard Windows programs to access certain high-level thermal printer commands. BarTender, however, was designed to take advantage of these commands.

## Appendix C: Printer Driver Troubleshooting

This appendix presents the best procedure for solving printing problems.

### Step-by-Step Procedure for Solving Printing Problems

If you are having any problems printing, take the following steps. If this does not resolve the problem, contact Seagull Technical Support (Refer to [Appendix D: Technical Support](#).)

1. **Check Serial Port Settings:** If you are using a serial port, check your printer and Windows settings for baud rate, data bits, stop bits and parity. (Refer to [Serial Port Settings](#) in [Activation](#).)

Do not assume that the “default” printer settings shown in your manual reflect your printer’s actual settings. You must directly inspect either the mechanical switches (usually on the back of your printer) or the front panel menu settings before you can be sure how your printer’s communications settings are configured.

2. **Check Cable:** Check that the cable is properly connected and attached to the correct port on your computer, and that the Windows printer port settings accurately reflect the port to which the printer cable is attached.
3. **Print the Printer’s Status Page:** To check for mechanical problems with the printer, print out from the printer's control panel (not from a computer) some document or label that is built into the printer's memory. Such documents have different names depending on the printer model. They are sometimes called status pages, sample labels, configurations, or configuration labels. Consult your printer manual for the exact steps. If you are unable to print such a test document or label, you may need to have your printer serviced before you can continue with the rest of this troubleshooting process.

#### Note:

If you had to adjust a printer switch in order to output your printer’s status page, remember to put it back the way it was.

4. **Reboot Printer:** Your printer may not have properly reset after the last failed print job or after the last time you made a change to a communication setting. Turn the printer off and leave it off for five seconds before turning it on again. When it goes on again, make sure it completes its self-test procedure before you attempt to print again. (No lights should be blinking. Some printers will display the word **Ready** or display a ready light, usually green.)
5. **Print the Driver's Test Label:** For the first print job after steps 1 through 4, use the Seagull printer driver's **Print Test Label** feature:
  - a. Click the Windows **Start** button.
  - b. Select **Settings** and then **Printers**. The **Printers** folder will be displayed.
  - c. Click your right mouse button on the printer you wish to change your settings for and select the **Properties** option. The **Properties** dialog opens.
  - d. Click the **General** tab.
  - e. Click the **Print Test Page** button.

If no label (not even a blank label) comes out and/or you get a printer communications error message, proceed to step 11. Otherwise, continue with step 6.

6. **Print Device Text From Application:** Create a label in your application. Use only the fonts built-into your printer, rather than Windows TrueType. If this test works, and you do not need to use any graphics or TrueType on your label, then you should be able to implement your desired label design right away and get back into production.
7. **Print Small Graphics From Application:** Add a very small graphic to the label, and one letter of TrueType text (such as Arial or Times New Roman). This first letter test should be a small size, around 12 pt.

If the TrueType text and graphic do not print, you may need to upgrade the printer's firmware or memory. Consult your printer manual for more information.

8. **Print More Graphics From Application:** Increase the point size of your TrueType text and try printing an entire word or more in

TrueType, instead of just a single letter. If this works, then you should go ahead and try to print all of the graphics you need on your label.

9. **Diagnose Printer Memory Shortage:** If all of your TrueType or bitmap graphics print perfectly only so far down the label and then are cut off cleanly straight across the label, you have insufficient memory in your printer to output the amount of graphics you are attempting to print. Contact your printer reseller for a printer memory upgrade.

In contrast to the clean cut off described in the previous paragraph, if the printer outputs incorrect label data, corrupted graphic images, or even no label at all, this too may indicate a memory shortage. But, if you are using a serial port, it may also indicate a flow control (handshaking) problem, as described in step 10. (Always turn the printer off and on again following his type of failure.)

10. **Diagnose Serial Port Flow Control Problems:** If you are using a serial port and a print job stalls and/or generates a communication error message after some data has already been successfully transmitted to the printer, you may have a flow control problem.

Test for this by slowing down your printing speed. For example, if you had been printing at 9600 baud, try a test print job at the much slower rate of 1200 or even lower. (Make the identical change in the port settings for both Windows and your printer.)

If slowing down the baud rate made your problem go away, or caused the problem to occur later in the print job, then you should adjust your flow control settings. Try switching from **software (Xon/Xoff)** to **hardware** flow control (or vice versa). Be sure you are using a cable that will allow your printer to use **hardware** flow control. (Consult the printer's manual.)

11. **Diagnose Serial Port Cable Problems:** If the **Print Test Label** fails and you are using a serial port, you can test for a cabling problem by temporarily turning off flow control (handshaking).
  - a. Verify that your printer's communication settings agree with those in your Windows port settings.
  - b. Verify that you are using a "null-modem" cable, rather than a "straight-through" serial cable.

- c. Change the Windows Flow Control settings for your serial port to **None**. Then, turn your printer off for five seconds and back on again.
- d. After your printer has finished its power-on self-test, repeat the small print job.

If the print job is successful, you have confirmed that the cable is incompatible with the flow control (handshaking) system. Determine what is wrong with your cable. Correct it, and then switch back to either **software (Xon/Xoff)** or **hardware** flow control.

12. **Diagnose Other Problems:** If you still can't print, it is very likely that:

- ◆ You have a second hardware product competing for an interrupt or I/O address with your communication port.

or

- ◆ You have an advanced Windows setting configured improperly.

Either way, you need to contact your computer vendor or your company's internal computer support staff for assistance.

Other possible problems:

- ◆ A bad (or improperly configured) serial printer cable. For example, a simple "3-wire" null-modem serial cable will not allow printing from inside Windows unless your flow control is set to **None**.
- ◆ The printer cable is attached to the wrong port of your computer.
- ◆ A malfunctioning printer port in your computer or printer.
- ◆ The printer is off or off-line.
- ◆ The computer's communications port may be conflicting with some other hardware component in your computer.

You will have to rule them out one-by-one in order to solve your problem.

## Appendix D: Technical Support

If you still have questions after consulting this manual and the help system, Seagull's Technical Support Department can be reached at the phone numbers and e-mail addresses below. Faxed technical support requests receive a faxed response. Internet technical support inquiries receive an Internet response.

### **You *Must* Register Your Software to Receive Support**

Register your product online at:

<http://www.seagullscientific.com/aspx/registration.aspx>

*Unless you register your product, you will not receive technical support.*

### **You *Must* Call From Next to Your Computer**

When calling for technical support, it is very important to call from a phone right next to a computer that is running BarTender. This makes it much easier for our technical support personnel to assist you.

### **About Tech Support for Visual Basic Script**

Technical support for Visual Basic Scripting is limited. For information on support limitations, please refer to *Technical Support, A Note on Technical Support for Visual Basic Scripting* in BarTender's help.

### **Technical Support Contact Information**

Please see next page.

**Seagull Scientific, Inc.** – USA, Canada & Latin America

Voice Telephone: 1 425 641 1408  
FAX: 1 425 641 1599  
Internet: TechSupport@SeagullScientific.com

**Seagull Scientific Europe, Inc.** – Europe, Middle East & Africa

Voice Telephone: +34 91 435 55 45  
FAX: +34 91 578 05 06  
Internet: EuroTech@SeagullScientific.com

**Seagull Scientific Asia-Pacific, Inc.**

Voice Telephone: +886 2 3765 2440  
FAX: +886 2 3765 2467  
Internet: AsiaTech@SeagullScientific.com

**Seagull Scientific Asia Pacific: Japan Branch Office**

Voice Telephone: +81 3 5847 5780  
FAX: +81 3 5847 5781  
Internet: JapanTech@SeagullScientific.com

# Index

## A

Access, Microsoft, 24  
activation, 11, 12, 15  
Activation Wizard, 12  
Add Database Connection Wizard, 25  
application suite, 12, 13, 14  
asking for help, 28  
Automation Editions, 1, 2, 4, 5, 6, 8, 11,  
12, 13, 20, 29

## B

bar code  
  changing symbology of, 25  
  changing the size of, 21  
  creating, 20  
  moving, 21

## C

clipboard, 21  
Commander enterprise integration  
  utility, 29  
Commander program  
  common procedures, 30  
companion applications, 12  
contacting Seagull Scientific. *See*  
  Seagull Scientific, contacting  
context-sensitive help, 28  
copy  
  label object, 21  
creating a new format, 18  
creating objects  
  bar code or RFID, 20  
  importing pictures, 26  
  text, 20

## D

Data Source Wizard, 22  
database  
  creating and managing, 13  
  logging data to, 13  
  reading data from, 22, 24  
  setting up a connection to, 25  
date  
  as label data, 22  
deleting an object, 22  
demonstration mode, 11  
dialog  
  Database Connection Setup, 26  
  Modify Selected Bar Code, 25  
  Modify Selected Object, 25  
  Modify Selected Picture, 26  
  Page Setup, 18  
  Print, 18, 26  
dialog (Commander)  
  Task Options, 30  
downloadable fonts, 37  
driver installation  
  Seagull Driver Wizard, 14  
driver removal, 15  
driver upgrades, 15  
driver wizard, 14

## E

Enterprise Automation edition, 5, 7, 15  
erasing an object, 22  
Ethernet connection  
  better than RS-232, 33, 37  
Excel, 24



## **F**

- flow control
  - of serial ports, 36, 41
- format
  - label. *See* label formats.

## **G**

- graphics
  - importing, 26

## **H**

- handles, 20
- handshaking
  - of serial ports, 36, 41
- HASP, 11
- height
  - changing bar code, 21
  - changing text object, 21
  - of labels, 19
- help system
  - asking for help, 28

## **I**

- Identical Copies of Label option, 26
- importing pictures, 26
- installation
  - of BarTender, 12
  - of Commander, 12
  - of History Explorer, 13
  - of Librarian, 13
  - of Print Station, 13
  - of Printer Maestro, 13
  - of Reprint Console, 13
  - of Seagull License Server, 12
  - of Security Center, 12
  - of the security key, 11
  - of Web Print Server, 15

- Internet address for Seagull Scientific, 44
- interrupt or I/O address conflict, 42

## **L**

- label formats
  - creating, 18
  - preexisting, 27
  - pre-made, 27
  - supplied by Seagull Scientific, 27
- label size
  - specifying, 18
- label stock, 19
- labels
  - printing, 26
  - reprinting, 1, 2, 8
- logging. *See* database, logging data to.

## **M**

- margins
  - page, 19
- Microsoft Access, 24
- Microsoft Excel, 24
- Microsoft SQL Server, 24
- moving an object, 21

## **N**

- New Format Wizard, 18
- null modem cable, 35, 41

## **O**

- ODBC
  - reading data from, 22, 24
- OLE DB, 22, 24
- Oracle, 24
- orientation, 19

**P**

parallel port  
    better than RS-232, 33, 37  
paste  
    label object, 21  
pictures  
    importing from database, 26  
    importing from file, 26  
position  
    changing an object's, 21  
predesigned label formats, 27  
preexisting label formats, 27  
printer  
    specifying, 18  
    supplies management, 5  
printer-based objects and fonts, 37  
printing  
    a test label, 39, 40  
    performance tips, 37  
    troubleshooting, 39  
printing labels, 26  
properties  
    of label objects, 25

**R**

reading label data from a database, 22, 24  
registering BarTender, 43  
removing an object, 22  
RFID object  
    creating, 20  
RS-232 serial port, 33, 37

**S**

SAP  
    reading data from, 22, 24  
screen. *See* dialog.  
screen data, 22  
Seagull License Server

    installation, 12  
    Seagull Scientific  
        contacting, 43  
    Security Center, 4, 7  
    security key, 11  
    selecting  
        objects, 20  
    serial cables, 35  
    serial communications, 33  
    serial port  
        parameters, 34  
    serial port parameters  
        of printer, 34  
        of Windows, 35  
size  
    of labels. *See* label size.  
    paper, 19  
SQL server, 24  
stock, 19  
straight-through serial cable, 35, 41  
supplies management. *See* supplies management, printer.  
support, technical, 43  
Symbology, 25

**T**

task list  
    creating/modifying in Commander, 30  
    running, 31  
tasks on task list  
    deleting, moving, and reordering, 30  
technical support, 43  
telephone numbers for Seagull Scientific, 43  
text object  
    changing the height of, 21  
    creating, 20  
time  
    as label data, 22

toolbox, 27

tracking printer consumables. *See*  
supplies management, printer.

## **U**

USB port, 11, 12

    better than RS-232, 33, 37

## **V**

Visual Basic, 22, 28

## **W**

Web Print Server, 7, 15

width

    of labels, 19

window. *See* dialog.



**Seagull Scientific, Inc. (World Headquarters)**

Bellevue, WA, USA

Sales: 1 425 641 1408 (International)

1 800 758 2001 (USA & Canada)

[sales@seagullscientific.com](mailto:sales@seagullscientific.com)

Fax: 1 425 641 1599

Tech Support: 1 425 641 1408

**Seagull Scientific Europe, Inc.**

Madrid, Spain

Sales: +34 91 435 25 25 (Main)

+44 1926 428746 (UK Branch)

[eurosales@seagullscientific.com](mailto:eurosales@seagullscientific.com)

Fax: +34 91 578 05 06

Tech Support: +34 91 435 55 45

**Seagull Scientific Asia-Pacific, Inc.**

Taipei, Taiwan

Sales: +886 2 3765 2440 (Main)

[asiasales@seagullscientific.com](mailto:asiasales@seagullscientific.com)

Fax: +886 2 3765 2467

Tech Support: +886 2 3765 2440

**Seagull Scientific: Japan Branch**

Tokyo, Japan

Sales: +81 3 5847 5780 (Main)

[japansales@seagullscientific.com](mailto:japansales@seagullscientific.com)

Fax: +81 3 5847 5781

Tech Support: +81 3 5847 5780

