

POWER PRESENTER RF

Part #PPRF



Instruction Manual

The POWER PRESENTER RF remote is a handy, compact presentation tool. It allows you to control slides in any presentation or slide show software. The POWER PRESENTER RF remote includes a built in laser pointer. The kit includes: a remote with laser pointer (battery included), a receiver, a USB cable, a PS/2 cable, and a nylon carrying case. The POWER PRESENTER RF uses radio frequency technology, so there is no need to point the remote at the receiver to control your slides. The maximum operating distance between the remote and the receiver is 150 feet, depending upon operating environment.

System Requirements

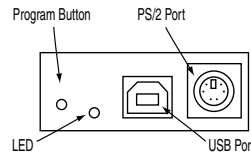
The only system requirements are USB or PS/2 compatibility. The POWER PRESENTER RF is "plug and play" compatible with MAC OS 8 or higher and Windows 95 (PS/2 only), 98, NT, 2000, XP or higher.

Connecting the Receiver to the Computer

For maximum range, the receiver should be placed as far away as possible from any electronic devices. First, determine if you will be using a USB connection or a PS/2 connection. **Do not try to connect both cables at the same time.**

Using a USB connection (MAC OS 8 or higher and Windows 98, NT, 2000 or higher)

- 1) Turn on your computer and let it fully boot-up.
- 2) Plug one end of the USB cable into the USB port on the receiver.
- 3) Plug the other end of the USB cable into the USB port on your computer.
- 4) The computer should automatically recognize the receiver as a new hardware after about 5 to 15 seconds, depending on the computer. Follow the instructions for installing new hardware (you may need to load the necessary USB driver from your operating system disk). Once your computer has installed the receiver as new hardware it will not need to run through the same steps again. Next time you plug the receiver into the same computer, it will take about 5 to 10 seconds to recognize the receiver. During the 5 to 10 seconds there may be little or no indication that the computer is communicating with the receiver.



Using a PS/2 connection (Windows 95,98,NT,2000, XP or higher)

- 1) Turn on your computer and let it fully boot-up.
- 2) Plug one end of the PS/2 cable into the PS/2 port on the receiver.
- 3) Plug the other end of the PS/2 cable into the PS/2 keyboard port on your computer (you may need to disconnect your keyboard first on desktop computers). The computer should take about 5 to 15 seconds to recognize the receiver. *However depending on your system, you may need to reboot to allow the computer to recognize the receiver*.

Training the Remote to the Receiver

The remote has been trained into the receiver at the factory. The receiver can support up to 7 total remotes.

To train a new remote, or re-train an existing remote, into the receiver:

- 1) Press and release the program button on the receiver. The LED lights solid.
- 2) Press the advance button (the largest button) on the remote three times. On the third press, the LED will turn off, indicating the remote has been successfully trained.

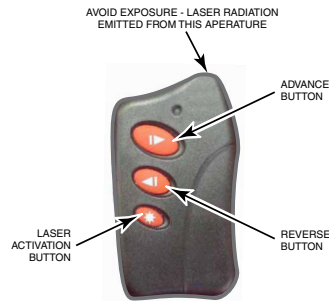
Training the Remote to the Receiver (Continued)

To delete all of the remotes from the receiver:

- 1) Press and hold the program button on the receiver. The LED will light for 3 seconds then go out.
- 2) Release the program button.

Using the Remote

After connecting the receiver properly, simply start your presentation or slide show software, put it in slide show mode, and press the remote's larger advance button to advance the slides and the smaller reverse button to go back to the previous slide. Press the smallest button to activate the laser pointer.

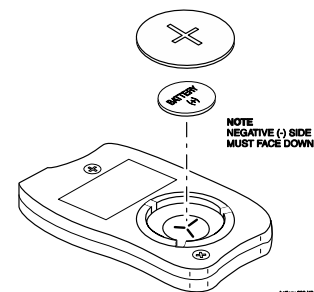


Changing the Remote Keystrokes

- 1) Turn on your computer and let it fully boot-up.
- 2) Plug the USB or PS/2 cable into the back of your computer.
- 3) Plug the other end of the USB or PS/2 cable into the PS/2 port on the receiver.
- 4) Launch a text editing software application (i.e. MS Word).
- 5) Open a blank document and display it on the front window of your monitor.
- 6) On the back of the Base / Receiver, press the Program Button three (3) times.
- 7) Keyboard commands will begin appearing on your open text window. When the command required for your software appears, press the button on your remote that you wish to match to that keystroke.
 - a) For Power Point the normal commands are:
 - Page Down – Top Button
 - Page Up – Middle Button
 - b (blank screen) – Top and Middle Buttons pressed together
 - b) For Media Shout the normal commands are:
 - F10 – Top Button
 - F9 – Middle Button
 - F6 (blank screen) – Top and Middle Buttons pressed together
- 8) When a command is recognized, the LED on the Base / Receiver will flash and the scrolling text will pause. The scrolling will continue until all three button command options (top, middle, both) are programmed
- 9) If you do not wish to use all three keystroke commands, simply unplug your Base / Receiver from the cable to stop the process.
- 10) Close your text editing software application.
- 11) Test your remote to confirm the commands you have selected.

Changing the Battery in the Remote

- 1) There are two "alignment dots" on the back of the remote case and one "alignment dot" on the battery cover. Insert a quarter into the slot on the battery cover and turn counter clockwise until the dot on the battery cover is lined up with the LEFT dot on the remote case. The battery cover will release.
- 2) Pull the battery out of the holder. Dispose of the battery in an environmentally proper manner.
- 3) Insert the new battery with the positive side facing you. The 3.0 volt lithium battery number is CR2032.
- 4) Make sure that the "alignment dot" on the battery cover is lined up with the LEFT "alignment dot" on the remote case as you replace the battery cover. Then turn clockwise until the dot on the battery cover is lined up with the RIGHT dot on the remote case.



Battery Replacement

It is recommended that you always carry a spare battery.

Product Specifications

Transmitter:

- Range: Up to 150 feet, depending upon operating environment
- Dimensions: 2.6" (66mm)L x 1.5" (38mm)W x 0.5" (13mm)H
- Weight: 1 oz (24 g) with batteries
- Radio Frequency: 433 MHz
- Laser: Diode Laser, 5mW max output at 650NM, Class IIIa
- Power: One 3.0 V CR2032 lithium battery
- Battery life: 1 year under normal operation

Receiver:

- Interface: PS/2 or USB port
- Dimensions: 2.6" (66mm)L x 3.4" (86mm)W x 1.2" (31mm)H
- Weight: 2 oz (59g) excluding cable

Cables:

- 3ft USB cable (A/B)
- 3ft PS/2 cable (male/male)

General:

- Warranty: 1 year, limited
- Compliance: FCC part 15; Class B for U.S.,
Industry Canada RSS-210, FDA 21 CFR 1040

Laser Pointer Information

Due to the potential of radiation exposure from the laser, the Food and Drug Administration (FDA) requires that any user of this product report and return a defective unit to the manufacturer. DO NOT point the laser light directly into the eye area or attempt to open or disassemble this product for any reason.

Tampering with the laser product may be hazardous and will automatically VOID the manufacturers warranty.

This product fully complies with FDA 21 CFR 1040.10 and 1040.11.



Troubleshooting

"I'm pressing the advance button but the slides are not advancing."

- 1) Check the cable connections.
- 2) Verify that the LED on the remote comes on solid when the advance or reverse button is pushed and that the laser pointer is at full brightness when the laser button is pushed. If not, replace the battery.
- 3) Verify that the transmitter has been trained to the receiver. Follow the instructions under "Training the Remote to the Receiver".
- 4) If using USB, verify that the correct operating system driver is loaded on your computer. Try reloading the driver, or try unplugging the receiver, waiting 10 seconds, and then plugging it back in.
- 5) If using PS/2, try restarting the computer with the receiver plugged into the PS/2 port.

"The LED on the remote flashes or does not turn on when I push the advance or reverse button, or the laser pointer is dim or does not work when the laser button is pushed."

- 1) The battery is dead. Replace the battery.

Limited Warranty

Honeywell International Inc. ("Seller"), 12800 Brook Printer Place, Poway, California 92064, warrants its product to be in conformance with its own plans and specifications and to be free from defects in material and workmanship under normal use and service for 12 months from the date of original purchase. Seller's obligation shall be limited to repairing or replacing, at its option, free of charge for materials or labor, any product that is proved not in compliance with Seller's specifications or proves defective in materials or workmanship under normal use and service. Seller shall have no obligation under this Limited Warranty or otherwise if the product is altered or improperly repaired or serviced by anyone other than Honeywell International Inc.

When returning a product, a Return Material Authorization number (RMA#) is required and must be obtained from Honeywell International Inc. The RMA# must be clearly displayed on the outside of the shipping carton and the product must be accompanied by documentation that explains the problem and provides proof of date of purchase.

FCC Statement

This device complies with Part 15 of the FCC rules. Operation is subject to the following two conditions: (1) this device may not cause harmful interference, and (2) this device must accept any interference received, including interferences that may cause undesired operation.

FCC ID: Transmitter: KFR-LSRT Receiver: KFR-LSRR

Federal Communications Commission (FCC) Part 15 Statement

This equipment has been tested to FCC requirements and has been found acceptable for use.

The FCC requires the following statement for your information:

This equipment generates and uses radio frequency energy and if not installed and used properly, that is, in strict accordance with the manufacturer's instructions, may cause interference to radio and television reception. It has been type tested and found to comply with the limits for a Class B computing device in accordance with the specifications in Part 15 of FCC Rules, which are designed to provide reasonable protection against such interference in a residential installation. However, there is no guarantee that interference will not occur in a particular installation. If this equipment does cause interferences to radio or television reception, which can be determined by turning the equipment off and on, the user is encouraged to try to correct the interference by one or more of the following measures:

- If using an indoor antenna, have a quality outdoor antenna installed.
- Reorient the receiving antenna until interference is reduced or eliminated
- Move the receiver away from the control/communicator.
- Move the antenna leads away from any wire runs to the control/communicator.
- Plug the control/communicator into a different outlet so that it and the receiver are on different branch circuits.

If necessary, the user should consult the dealer or an experienced radio/television technician for additional suggestions. The user or installer may find the following booklets prepared by the Federal Communications Commission helpful:

"Interference Handbook" This booklet is available from the U.S. Government Printing Office, Washington, DC 20402. The user shall not make any changes or modifications to the equipment unless authorized by the installation instructions or User's Manual. Unauthorized changes or modifications could void the user's authority to operate the equipment.

Honeywell

12800 Brook Printer Place
Poway, California 92064
Copyright © 2004 Honeywell International Inc.
(858) 513-6391
www.powerremote.com