

DM DEDICATED MICROS

ice

Dome Cameras

DM/ICED-BH39

DM/ICED-CMH39/B

DM/ICED-CMU39

DM/ICED-CMU39/N

DM/ICED-DNU39/B

DM/ICED-DUM

DM/ICED-CMH39

DM/ICED-CMH39/N

DM/ICED-CMU39/B

DM/ICED-DNU39

DM/ICED-DNU39/N



Contents

Introduction	3
Important Safeguards.....	4
Installation	6
Controls and Switches	8
Dip Switches	8
Appendix	11
Quickstart	12
Index	15

Whilst every attempt is made to ensure these manuals are accurate and current, Dedicated Micros reserve the right to alter or modify the specification of the machine described herein without prejudice.

Introduction

These instructions cover ICE series fixed dome cameras. Read all of these instructions. Use them to install your camera and have them available for its lifetime. If you have any problems, contact your agent.

Models

DM/ICED-BH39	Mono high resolution	570 TVL	1/3"	SuperHAD™ CCD	0.07 lux at F1.2
DM/ICED-CMH39	Colour/Mono high resolution	480 TVL	1/3"	SuperHAD™ CCD	0.7 lux at F1.2
DM/ICED-CMH39/B	Colour/Mono high resolution	480 TVL	1/3"	SuperHAD™ CCD	0.7 lux at F1.2 Black shroud
DM/ICED-CMH39/N	Colour/Mono high resolution	480 TVL	1/3"	SuperHAD™ CCD	0.7 lux at F1.2 NTSC
DM/ICED-CMU39	Colour/Mono ultra resolution	540 TVL	1/3"	SuperHAD™ CCD	0.7 lux at F1.2
DM/ICED-CMU39/B	Colour/Mono ultra resolution	540 TVL	1/3"	SuperHAD™ CCD	0.7 lux at F1.2 Black shroud
DM/ICED-CMU39/N	Colour/Mono ultra resolution	540 TVL	1/3"	SuperHAD™ CCD	0.7 lux at F1.2 NTSC
DM/ICED-DNU39	Day/Night ultra resolution	540 TVL	1/3"	SuperHAD™ CCD	1.0 / 0.15 lux at F1.2
DM/ICED-DNU39/B	Day/Night ultra resolution	540 TVL	1/3"	SuperHAD™ CCD	1.0 / 0.15 lux at F1.2 Blk shrd
DM/ICED-DNU39/N	Day/Night ultra resolution	540 TVL	1/3"	SuperHAD™ CCD	1.0 / 0.15 lux at F1.2 NTSC
DM/ICED-DUM	Dummy Dome				

Important Safeguards

Product Safety

WARNING

- Installation and servicing is only to be carried out by suitably qualified and experienced personnel.
- Do not remove covers as there is a risk of injury or death by electric shock.
- Only power low voltage dome cameras from a class 2 isolated power supply.

This camera range is designed for use in general purpose CCTV applications and has no other purpose.

Only operate your camera between the temperatures of -10°C and +50°C. Do not operate your camera outside its specified power supply range.

Electromagnetic Compatibility (EMC)

CAUTION

This product is intended solely for use in general CCTV applications.

The product must be installed and maintained in accordance with good installation practice to enable the product to function as intended and to prevent problems. Refer to your agent for installation guidance.

Declaration of Conformity

The manufacturer declares that the equipment supplied with this manual is compliant with the essential protection requirements of the EMC directive 89/336 and the Low Voltage Directive LVD 73/23 EEC.

Conforming to the requirements of standards EN55022 for emissions, EN61000-4 parts 2, 3, 4, 5, 6 and 11 for immunity and EN60950 for Electrical Equipment safety.

FCC CLASS B REGULATORY NOTICE

This device complies with part 15 of the FCC Rules. Operation is subject to the following two conditions: (1) This device may not cause harmful interference, and (2) this device must accept any interference received, including interference that may cause undesired operation. This equipment has been tested and found to comply with the limits for a Class B digital device, pursuant to part 15 of the FCC Rules. These limits are designed to provide reasonable protection against harmful interference in a residential installation. This equipment generates uses and can radiate radio frequency energy and, if not installed and used in accordance with the instructions, may cause harmful interference to radio communications. However, there is no guarantee that interference will not occur in a particular installation. If this equipment does cause harmful interference to radio or television reception, which can be determined by turning the equipment off and on, the user is encouraged to try to correct the interference by one or more of the following measures:

Reorient or relocate the receiving antenna.

Increase the separation between the equipment and receiver.

Connect the equipment into an outlet on a different circuit different to the receiver.

Consult the dealer or an experienced radio/TV technician for help.

Modifications not expressly approved by the manufacturer could void the user's authority to operate the equipment under FCC rules.

Camera Care

In order to avoid damaging your camera, note the following points:

CAUTION

- Remove all packaging inserts and the protective film from the dome cover before using the camera.
- Do not touch the image surface of the sensor. If the sensor is accidentally touched, only clean it using isopropanol.
- Do not expose the camera sensor to very bright light over a long period of time as this may cause damage to the CCD sensor. The camera and lens set-up must be correct to avoid possible damage due to long term exposure to bright light. A lens with an automatic iris is recommended under these conditions.

Installation

The ICE dome camera can be mounted in two ways: ceiling mount for installation into a tile ceiling; surface mount for installation directly to a hard surface or mounting structure.

Parts Supplied

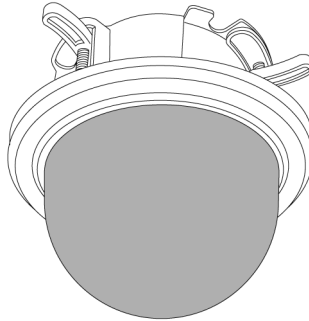
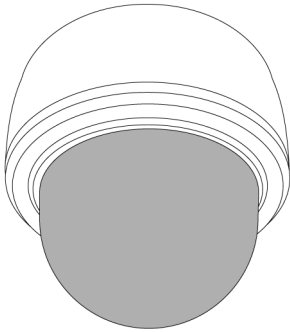
- 2 x Plastic anchors
- 2 x 80 mm (3") screws

Parts Not Supplied

- Optional video service lead (part number DM/ICED-SERV)

Surface Mount

Ceiling Mount



Surface Mount Installation

Refer to the Quickstart section for more information.

- 1 To remove the dome cover, rotate it counter-clockwise and gently pull it away from the camera body. The inner liner can now be removed.
- 2 Using the template supplied at the rear of this manual, mark and drill the holes required for fixing. Using the two 80 mm mounting screws, attach the dome camera to the surface as shown. Do not over tighten the fixing screws. The screws can be used on their own if the surface is of a suitable material (e.g. wood), but plastic anchors must be used where the surface is of brick or masonry construction. Run the power and video cables to the camera. Cables may be fed through the ceiling or through the cutout in the side of the camera shroud. Remove the cutout with a sharp knife and use a round file to smooth the edges if necessary.
- 3 Connect the video to either the BNC at the end of the flying lead or directly to the BNC. Use only one of the BNC connectors to connect video.
- 4 Connect the power to the power terminals. These cameras are designed to operate from a 12V DC or 24V AC power supply. Connections and polarity are indicated next to the terminals. The power supply must be a UL Listed, Class 2 isolated type.

Warning: This camera is a Class 2 device and therefore does not have an earth connection in the power cord.

Recess Mount Installation

Refer to the Quickstart section for more information.

- 1 To recess mount the camera, the shroud must be removed. Gently squeeze together opposite sides of the shroud as shown and lift it away from the camera body.
- 2 Using the template supplied at the rear of this manual, mark and cut a 4" (100 mm) diameter hole. A suitably sized hole saw can also be used.
To prepare for installation use a suitable screwdriver to loosen the three fixing clamps sufficiently to accommodate the thickness of the tile or ceiling.
- 3 Connect the video to either the BNC at the end of the flying lead or directly to the BNC. Use only one of the BNC connectors to connect video.
Connect the power to the power terminals. These cameras are designed to operate from a 12V DC or 24V AC power supply. Connections and polarity are indicated next to the terminals. The power supply must be a UL Listed, Class 2 isolated type.
- 4 Insert the camera into the hole. Using a suitable screwdriver, tighten the three fixing clamps as shown. Do not overtighten the clamps.

Camera Adjustment

Camera Position

The camera assembly is adjustable in all three axes. Adjust the camera until it is pointing in the desired direction.

FOV & Focus

Use the levers on the varifocal lens to adjust the camera's field of view, and focus.

Controls and Switches

Switch	Function	OFF	ON	INT	LL
1	Backlight Compensation				
2	Automatic Gain Control				
3	Electronic Iris				
4	Line Lock				
Switch	Function	OFF	ON	HI	LO
1	Day/Night				
2	Colour Burst				

Default setting

The DIP switches are located on the camera's circuit board.

Dip Switches

Note: *White indicates default switch position*

Backlight Compensation

The Backlight Compensation (BLC) feature compensates for back-lit scenes by enhancing objects in the centre of the scene which would previously have been in silhouette. Select ON or OFF using the BLC switch. Default is OFF.

AGC (Automatic Gain Control)

The Automatic Gain Control (AGC) feature can improve picture quality when levels of illumination are low. Select ON or OFF using the AGC switch. For most applications the AGC feature should be ON and is therefore the default setting.

Electronic Iris

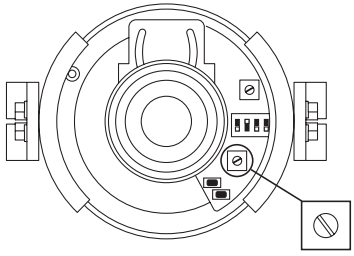
The Electronic Iris (EI) feature compensates for excessive light levels by automatically adjusting the shutter speed. For auto-iris lenses, the EI should be set to OFF. For manual lenses, EI should be ON.

Line Lock

Choose INT (internal) or LL (adjustable). The LL setting allows $\pm 180^\circ$ phase adjustment via the two LL Phase Advance/Retard buttons. Default is LL.

Pressing both buttons simultaneously will reset LL to the factory default setting.

The LL setting can be adjusted using the LL potentiometer available on some versions of this product.



Day/Night

(DN Versions only)

This switch sets the light level at which the camera automatically switches between day and night operation. Hi sets the camera to switch between day and night mode at higher light level. Lo sets the switching point at a lower light level. The default setting is Lo.

When in Night mode, the IR cut filter is removed allowing infra red illumination to be used.

Colour Burst

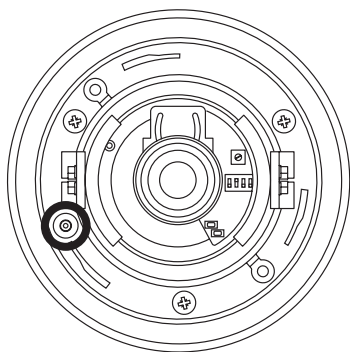
(DN versions only)

The Colour Burst (CB) switch allows the colour burst component of the signal to be turned on or off. When a day/night camera switches to night (mono) mode, the colour burst can be switched OFF for a true monochrome signal. Note that some multiplexers/recorders detect video-loss if the colour burst signal disappears. If problems are encountered with the multiplexer/recorder when the camera switches to mono, try setting CB to ON. Default is CB OFF.

Lens Level

Adjust the lens iris level according to the lighting conditions.

- 1 Turn the Automatic Gain Control switch OFF
- 2 Adjust the Lens Level potentiometer so that a 1 V peak-to-peak signal is achieved. Use care so as not to damage the potentiometer.
- 3 Turn the Automatic Gain Control switch ON

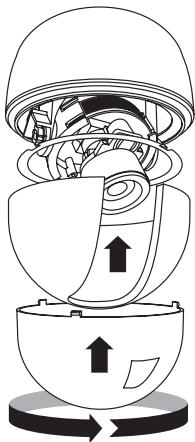


Local Video Out

Provision is made for the connection of a local video monitor to assist in setting up the camera. Use the optional service connector DM/ICED-SERV (not supplied).

Final Assy

When all the connections and adjustments have been made, re-attach the camera liner and dome cover.

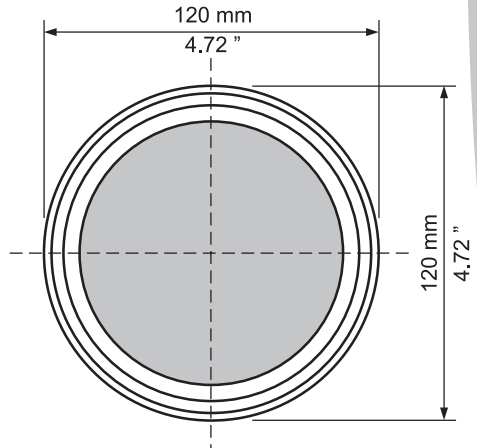
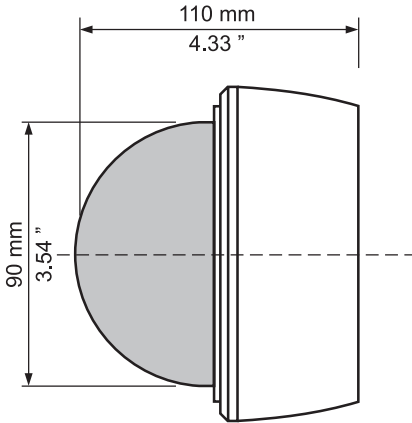
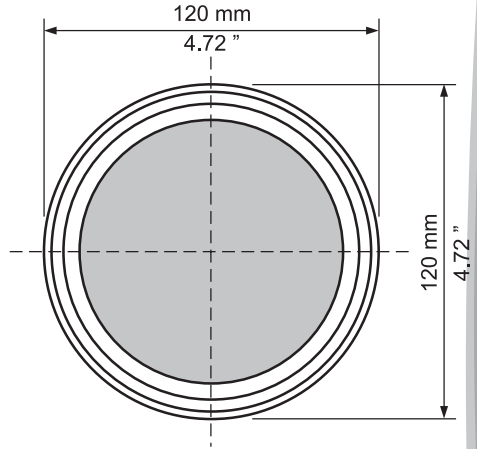
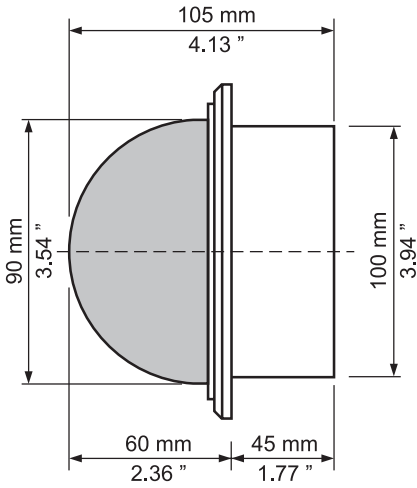


DM/ICED-DUM only

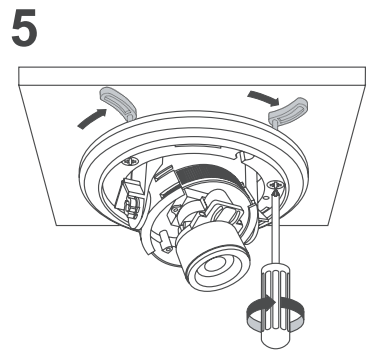
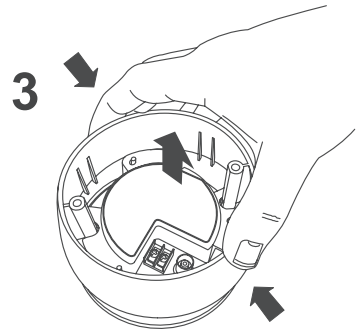
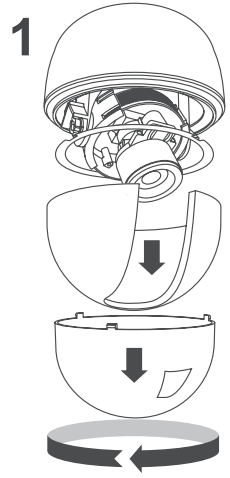
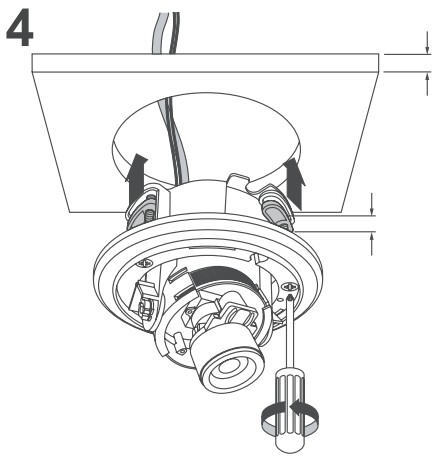
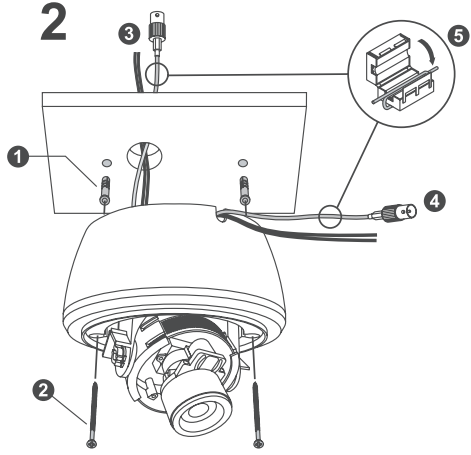
A self-adhesive blanking label is supplied to cover the opening in the liner.

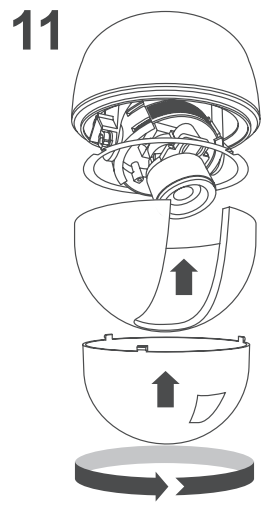
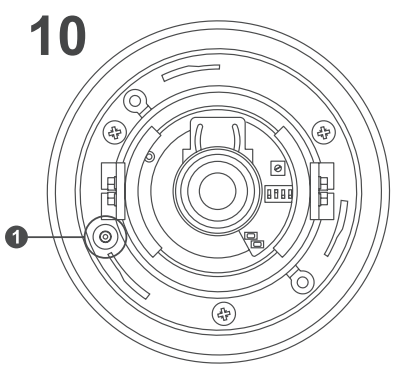
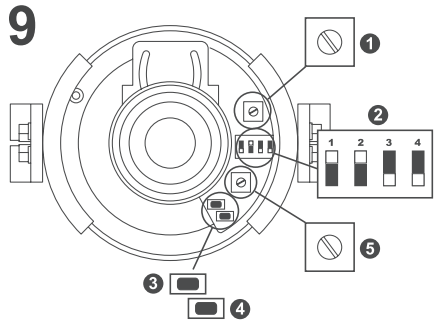
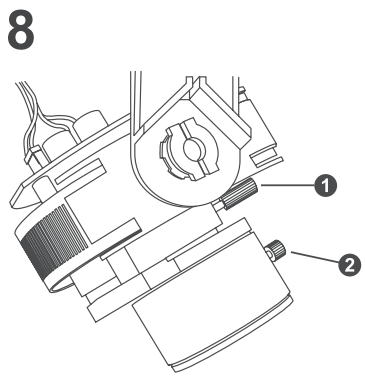
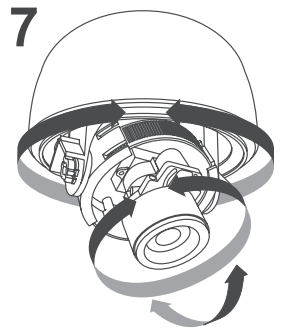
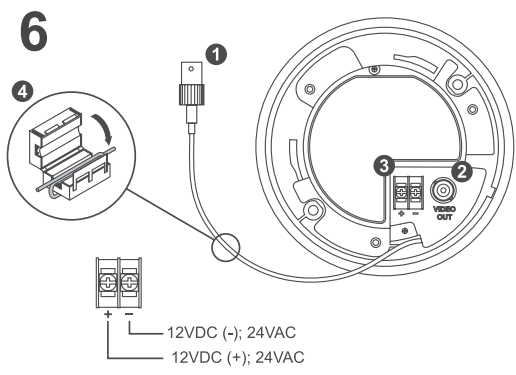
Appendix

Dimensions



Quickstart





Index

AGC (Automatic Gain Control)	8
Appendix.....	11
Backlight Compensation.....	8
Camera Adjustment.....	7
Camera Care.....	5
Camera Position.....	7
Colour Burst.....	9
Contents.....	2
Controls and Switches.....	8
Day/Night.....	9
Declaration of Conformity.....	4
Dimensions.....	11
Dip Switches.....	8
DM/ICED-DUM only.....	10
Electromagnetic Compatability (EMC).....	4
Electronic Iris.....	8
FCC CLASS B REGULATORY NOTICE.....	4
Final Assy.....	9
FOV & Focus.....	7
Important Safeguards.....	4
Index.....	15
Installation.....	6
Introduction.....	3
Lens Level.....	9
Line Lock.....	8
Local Video Out.....	9
Product Safety.....	4
Quickstart.....	12
Recess Mount Installation.....	7
Surface Mount Installation.....	6

DEDICATED MICROS

Dedicated Micros Ltd.
1200 Daresbury Park, Daresbury,
Cheshire, WA4 4HS, UK

Dedicated Micros Europe
Neckarstraße 15,
41836 Hückelhoven, Germany

Dedicated Micros France
9-13 rue du Moulinet
75013 Paris, France

Dedicated Micros Slovenia
Delavska cesta 26,
4208 Sencure, Slovenia

Dedicated Micros Benelux
Joseph Chantraineplantsoen 1,
3070 Kortenberg, Belgium

Dedicated Micros USA.
14434 Albemarle Point Place, Suite 100,
Chantilly, Virginia 20151 USA

Dedicated Micros USA.
23456 Hawthorne Blvd.
Suite 100, Torrance,
CA 90505, USA

Dedicated Micros, Australia PTY.
5/3 Packard Avenue, Castle Hill,
NSW 2154, Australia

Dedicated Micros, Asia PTY
16 New Industrial Road,
#03-03 Hudson Techno Centre,
Singapore 536204

Dedicated Micros Middle East
Building 12, Suite 302, P.O. Box 500291, Dubai Internet
City, Dubai, United Arab Emirates

Dedicated Micros (Malta) Ltd.
BLB017, Bulebel Industrial Estate,
Zejtun, ZTN08, Malta



MI-I-CED/E1-0