

Bio-Chamber



User's Manual



AUTHORISED REPRESENTATIVE IN THE EUROPEAN COMMUNITY

Obelis s.a

Boulevard Général Wahis 53
1030 Brussels, BELGIUM

Tel: +(32) 2. 732.59.54

Fax: +(32) 2.732.60.03

E-Mail : mail@obelis.net

Index:

Introduction.....01

Installation and Operating Instructions.....01

Maintenance and Cleaning.....02

Safety Precautions.....03

Technical Specifications.....03

Exploded View.....04

Part List.....04

Warranty Terms / Servicing.....05

Authorized Service.....05

1.Introduction:

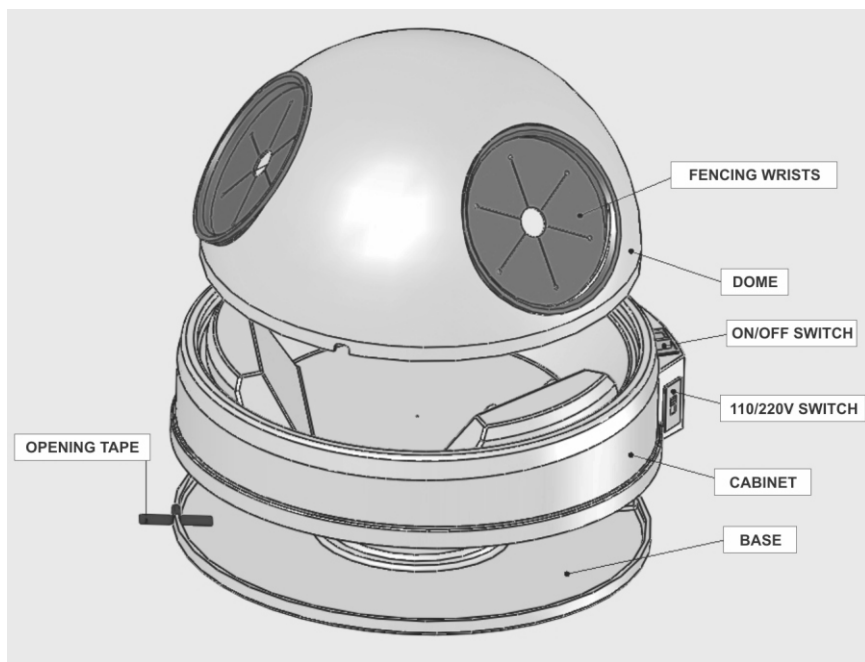
The BIO-CHAMBER is a device with exhaustion system that was specially designed to be used in MICROBLASTER blasting process whose objective is avoid that impurities generated in the process be released in the environment, providing greater cleanliness, speed, efficiency, safety and practicality in blasting procedures.

The BIO-CHAMBER has become indispensable in the laboratory and dental office. It is easy to use and handling.

It is important to observe that the use of BIO-CHAMBER does not eliminate the need of using personal protection equipment such as masks and gloves.

For greater benefit, safety and efficiency of the product, we recommend reading the entire User's Manual before starting any installation and operation.

To better understand the instructions of the BIO-CHAMBER, please take a look at the main components below



2.Installation and Operating Instructions:

The BIO-CHAMBER does not require any special installation, just keep in mind that the device has manual switching voltage 110/220v i.e. before turn on observe if the voltage switch is selected according to the main power supply (110 or 220Volts) and only after that, plug the BIO-CHAMBER main cable.

We recommend that the BIO-CHAMBER be installed close to lighting ambient.

Because of the design and features of the dome, the BIO-CHAMBER does not require exclusive lighting.

After plugging the device into the power supply, just push the on/off key located on the side of the equipment for BIO-CHAMBER starts operation .

Do not block the air exit at the rear of the equipment since this exit is important to guarantee the effectiveness of the exhaustion system and fan cooling.

3.Maintenance and Cleaning

The suction system of the BIO-CHAMBER was designed for the most harmful fine particles which are deposited at the base of equipment. The biggest particles will be remain at the bottom of the cabinet.

Before starting the cleaning process of the BIO-CHAMBER, be sure that the equipment is turned off and the cable removed from the main power supply.

The BIO-CHAMBER cleaning should be initiated with the removal of the dome that must be cleaned with a brush and then washed with water and neutral detergent.

Attention: the cleaning of the dome with abrasive sponge can scratch, turning opaque and consequently damaging the visibility at work.

For cleaning the cabinet and the base, throw in the garbage located in the bottom of the cabinet with the aid of a brush keeping the equipment in horizontal position, then separate the cabinet of base using the opening tape located on the left side (as shown below) and throw in the garbage located in the base, also with the aid of a brush.

To complete, pass a damp cloth in both parts (cabinet and base) taking care to not wet the suction fan.

Note.: Never use compressed air to clean the equipment.



4. Safety Precautions

- Even with the use of the BIO-CHAMBER, we recommend the use of personal protection equipment (PPE) to work with the MICROBLASTER. Always use a protective goggles, gloves and breathing mask;
- During the blasting, do not direct the MICROBLASTER ejector nozzle for the dome of the Bio-Chamber, because it will become opaque, compromising the viewing of the work;
- To better ergonomics at work, the cabinet was designed with two hands supports located below the fencing wrists, as picture below.
- Do not make changes/ or adjustments in the equipment.

CAUTION: Never direct the MICROBLASTER ejector nozzle for any part of the body during the blasting.



5. Technical Specifications:

Voltage 110/220 V (manual switching)

Consumption 15W

1 A fuse

Electric compartment protected against electric shock.

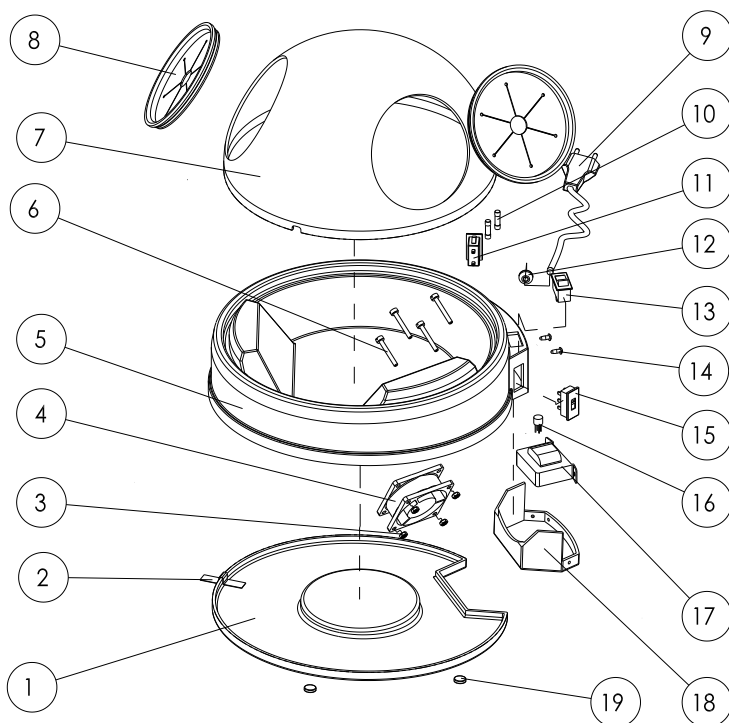
Weight of the product without packaging: 1,32 Kg

Weight of the product with packaging: 1,72 Kg

Size of equipment: Ø 31 x 20 cm

Size of packaging: 32 x 32 x 21 cm

6.Exploded View



7.Part List

Item	Qt	Code	Description
01	1	CBAS1213	Bio-Chamber Base
02	1	CFTA1250	Opening Tape
03	4	CPOR0543	Cooler Fixing Nut
04	1	CMOT1207	Cooler
05	1	CGBN1212	Bio-Chamber Cabinet
06	4	CPAR0896	Cooler Fixing Screw
07	1	SCUP0096	Dome
08	2	CBOR1216	Fencing Wrists
09	1	CCEL0042	Power Cable
10	2	CFSV0748	Fuse 1.5 A
11	1	CFSV0497	Fuse Holder
12	1	CPRC0038	Cable clip
13	1	CINT1210	Power Switch
14	2	CPIN0236	Electrical Protection Fixing Pin
15	1	CINT0371	HH Switch 127/220 V
16	1	CPON0893	Retifying Bridge AC/DC
17	1	CTRF1205	Transformer
18	1	CPRT1215	Electrical Protection
19	4	CBOR1249	Rubber Foot

8. Warranty Term / Servicing

Bio-Art Equipamentos Odontológicos Ltda., grants 1 year warranty, starting from the date of the device purchase (invoice). The warranty is carried out exclusively by the authorized distributor and includes any manufacturing defect, being provided through the repairing of the product and subjected to the following requirements:

- That the product has been used correctly in accordance with the instructions described in the user manual;
- The claim is followed by the invoice and registered within the warranty period, accompanying a report with description of the damage and product serial number;
- The product is handled, transported and stored with care;
- The costs of transport (from and to) is paid by the customer;

Warranty limitations:

- Natural wears and tear of parts;
- Misuse, falls or accidents;
- Inadequate transportation;
- Repair by unauthorized person;
- Use in disagreement with the features and purposes of the device;
- Wear from exposure to adverse conditions (humidity, cold and heat);
- Damage from lack of cleaning or maintenance with inappropriate products.

In case of doubt, contact the manufacturer:

BIO-ART EQUIPAMENTOS ODONTOLÓGICOS LTDA.

Rua Teotônio Vilela, 120 - Jardim Tangará

CEP 13568-000 - São Carlos - SP - Brasil

Tel. +55 (16) 3371-6502 - Fax +55 (16) 3372-5953

website: www.bioart.com.br - E-mail: bioart@bioart.com.br

CNPJ 58.538.372/0001-56 - I.E. 637.034.447.113

This manual contains all the required information about the operation of the Bio-Chamber and its uses.

BIO-ART does not guarantee the equipment due to failures resulting from improper use, therefore we reinforce that this manual should be read carefully.

Servicing on the equipment can only be made by specialized and authorized personnel. Any improper change on the equipment will be reason for loss of warranty.

When sending the equipment for authorized servicing, be sure to pack it properly to avoid damages during transportation.

The information in this manual is subject to alteration without any previous notice.

Excluded from this warranty are eventual defects cause by the natural transportation of the product, damage caused during the transportation (both ways), damages caused by applications different from what is specified in this manual and damages caused by improper installation.

Bio-Art exempts itself from any responsibility for personal injury or material damages arising from improper use of this product. It will be responsibility of the user to take the necessary actions to avoid such things to happen.

9. Authorized Service

For your safety, servicing on this product can only be provided by authorized personnel/companies. See our site www.bioart.com.br for our Authorized Services.

Notes:



Rua Teotônio Vilela, 120 - Jd. Tangará - CEP 13568-000 - São Carlos - SP - Brasil
Tel. +55 (16) 3371-6502 - Fax +55 (16) 3372-5953
Home Page: www.bioart.com.br E-mail: bioart@bioart.com.br