



**Lite Cruiser**  
Personal Mobility Aid



## **STANDARD MODEL**

---

**Website:** [www.EZLiteCruiser.com](http://www.EZLiteCruiser.com)

**E-mail:** [support@ezlitecruiser.com](mailto:support@ezlitecruiser.com)

**Phone (Toll Free):** 1-(888) 544-6054



# PRECAUTIONS

Thank you for purchasing the EZ Lite Cruiser. We sincerely hope that it will bring convenience and enjoyment to your daily life.

Please read the instructions before using the chair in order to operate and maintain it properly. EZ Lite Cruiser assumes no responsibility for personal injury or property damage sustained by or through the use of this product.



Please pay attention to the followings content with these warning symbols.



Failure to take precautions could result in serious injuries.



It can also damage or decrease the life expectancy of the EZ Lite Cruiser.



# TABLE OF CONTENTS

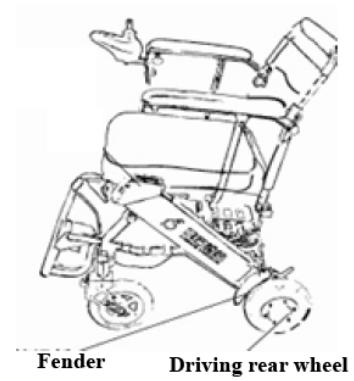
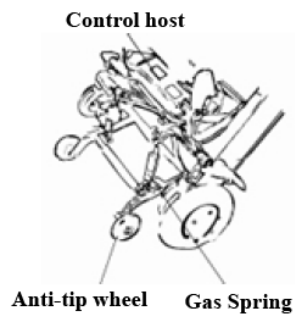
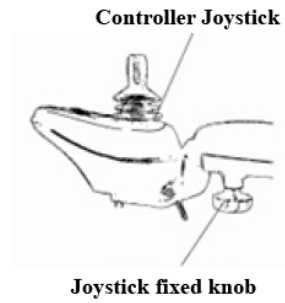
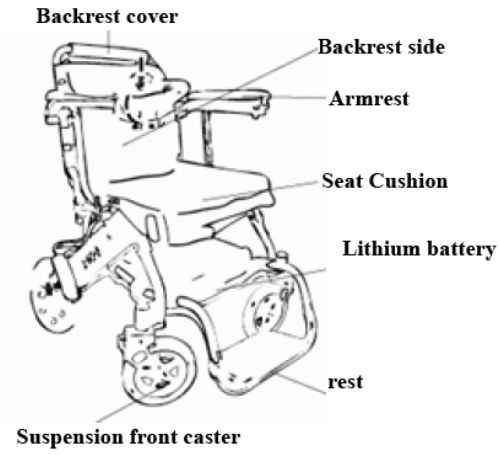
---

EZ Lite Cruiser Components.....	4
Safety Guide.....	5
Unfolding & Folding.....	11
Charging Instructions .....	13
Installing the Joystick.....	14
Joystick Operation .....	15
Electric Operation .....	16
Manual Operation .....	17
Transport & Storage .....	18
Maintenance and Test .....	18
Trouble Shooting .....	19
Technical Specifications .....	20
Service History .....	21
Warranty Information.....	21

---

## EZ Lite Cruiser Components

---



## Safety Guide

---



- The user must be of sound mind and judgment. They must be conscious and have unimpaired motor functions in their hand to use the controller.
- The user must read this user's guide before operating the chair and get familiar with its components and features.
- The user should practice driving skills with assistance on open, flat, and safe grounds before normal use.



### Moving forward and Parking

- To move forward, push the joystick forward lightly
- To stop, release the joystick.



### Moving backwards

- To move backwards, push the joystick backwards lightly
- The user must be aware of what is behind them before maneuvering backwards to avoid collisions



### Turning

- To turn, push the joystick to the left or right
- The user must be aware of what is to the left or right to avoid collisions when turning

## Safety Guide (continued)

---



### Driving on bends

- Lightly push the joystick in the direction of the bend. Practice speed control.



### Practice avoiding obstacles

- Lightly push the joystick in either directions to avoid and maneuver around the obstacle/s, practice speed control.



### Driving Fast

- Push the joystick all the way in the direction you want to go. Pull the joystick back to the middle if you do not feel you are not 100% in control.



### Driving over small curbs

- Lightly push the joystick and drive slowly over the curb. The step should not be higher than 3centimeters



### Driving Uphill

- Keep your body tilted forward to keep the center of gravity stable. Drive slowly. We recommend the slope be less than 8 degrees for optimal performance.

## Safety Guide (continued)

---



### Entering & Exiting Elevator

- The user should pay attention to the opening and closing intervals of the elevator door to avoid collisions while entering or exiting the elevator.



### Driving on sidewalks

- The user should stay on the sidewalk and avoid entering the motor vehicle lane unless to cross the street. Pay attention to obstacles and avoid contact with them.



### Crossing the street

- Pay attention to avoid cars and only cross when you are allowed to. Must drive slowly over the curb, to get back on the sidewalk, which should not be more than 3cm high.



### Driving over train/railroad tracks

- We highly recommend you do not cross railroad/train tracks alone in the EZ Lite Cruiser. You should be accompanied by an assistant, friend, or loved one.
- Attempting to cross tracks that are elevated too high (more than 3cm) could result in a rollover or accident. It could endanger the personal safety of the user.

## Safety Guide (continued)

---



### Driving over a high curb/step or steep incline.

- Driving over too high of a curb/step (more than 3cm) could result in rollover.
- Driving on too steep of an incline could also result in a rollover.



### Getting into and out of a bed/chair/couches

- We recommend that the user has assistance getting out and into the chair.
- Move the arm rests and foot rest out of the way before entering and exiting the chair.



### Driving downhill

- Make sure the electromagnetic brake is closed before driving downhill. Otherwise it may lead to personal injury. Check the image to the right to see how the brake should appear closed.



### Crossing the Road

- Pay attention to the traffic light and look both ways for oncoming traffic.
-



## Safety Guide (continued)

---



### Driving through the crosswalk

- Make sure your chair has sufficient power before crossing the street. Stopping suddenly because of power loss in the middle of the street can cause personal injury or even death.



### Self repair of the EZ Lite Cruiser

- DO NOT attempt to repair the product on your own. It may cause permanent damage to the chair and could put yourself at risk of injury or death.
- The product should be repaired by a professional repair shop or maintenance service personnel.



### Seat Belt

- Use the seat belt anytime when using the EZ Lite Cruiser



### Moving someone in the chair

- Avoid moving or handling the battery case when assisting users on or off the chair. It could result in damage to the chair and could cause harm.

## Safety Guide (continued)

---



### Washing the EZ Lite Cruiser

- DO NOT hose down (Spray) the chair with water or any liquids. It will cause damage to the chair and could also harm or endanger your personal safety.
- Wipe down with a damp cloth.
- The seat cushion could also be removed to be washed separately



### Battery handling and care 1

- DO NOT leave the battery or electrical components of the chair in a car that is baking (heating up) in the sun. It will cause permanent damage.
- Keep the battery away from fire and heat sources.



### Battery handling and care 2

- DO NOT allow children access to the battery or electrical components to the chair.
- Store the battery in a cool, dry area that children do not have access to



### Battery handling and care 3

- DO NOT place any items over or on the charger while it is charging.
- If the battery becomes hot, deformed, or emits an odor while charging, stop the charging immediately.



### Battery handling and care 4

- DO NOT store the battery in direct sunlight. Again, it should be stored in a dry, cool, and ventilated area that children don't have access to.
  - DO NOT store in a severe cold environment. It will damage and decrease the life of the battery.
-

## Safety Guide (continued)

---

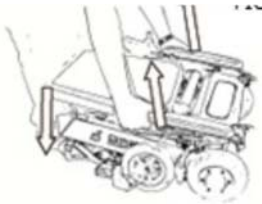


### **Battery handling and care 5**

- Fully charge the battery in case of long term storage. The battery has discharge characteristics and must be charged once every three months or it could lead to over discharge damage.
- The Lithium Battery is recyclable. Please discard responsibly through a recycling option

## Unfolding and Folding

---



### **Unfolding —Step 1**

Put the chair on the ground, use your foot to press down on footrest while using your hands to pull up the armrests.



### **Unfolding —Step 2**

Pull the armrests up until you hear a clicking sound which will confirm the chair is fully opened.



### **Unfolding —Step 3**

Check and make sure that every part is as it appears in the image to the left.



### **Unfolding —Step 4**

Locking line should be pulled back along with the backrest.

---

## Unfolding and Folding

---



### **Folding—Step 1**

While pulling the backrest, adjust the direction of the front wheel. (check out the image in step 3 below)



### **Folding—Step 2**

Pull the release wire and fold the backrest down



### **Folding—Step 3**

Position the front wheels as shown on the image to the left.



### **Folding—Step 4**

Push the seat cushion down and the chair will fold down.

Please visit our website at <http://www.ezlitecruiser.com/pages/video-gallery/>

**There you can watch a video on Folding and Unfolding the EZ Lite Cruiser!**

---

## Unfolding and Folding

---



### WARNING

If the EZ Lite Cruiser is not locked in the open position, it can collapse when attempting to sit on the chair. This can cause damage to the chair and also the user.



### WARNING

Check the locking device (shown in the image to the left) to make sure the chair is opened all the way and locked into position.



### WARNING

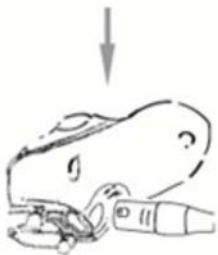
If the front wheel is not in the proper position (shown in the image to the left) the chair will not fold tightly and could cause damage. Make sure the front wheels are in the correct position before closing.

## Charging Instructions

---



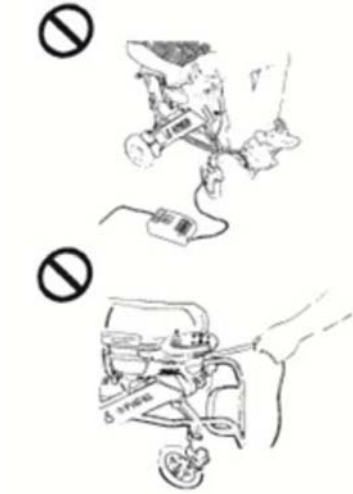
- Please use the Lithium battery charger supplied by EZ Lite Cruiser
- Insert the charger into the joystick socket, while being mindful of the plug orientation.
- Insert the charger into an electrical outlet, which will cause the charging light to turn on



- **Red** Indicator light means the battery is charging
  - **Green** Indicator light means the battery is fully charged.
-

## Charging Instructions

---

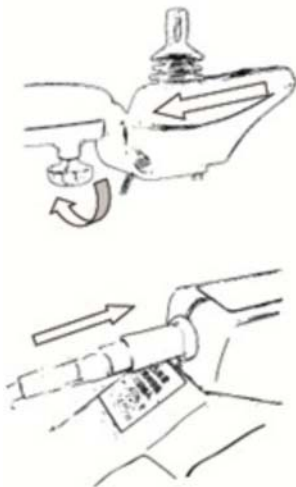


- DO NOT turn on the controller power or use the chair during charging.
- Ensure that the charger and battery are cool while charging. These components should not be heating up. Failure to check can cause damage to the chair and even start a fire.
- Charging time can vary from 2 to 8 hours.
- DO NOT keep the charger plugged in after a successful charge, it must be unplugged shortly after.
- Keep charger away from moisture and impact.



## Installing the Joystick Controller

---

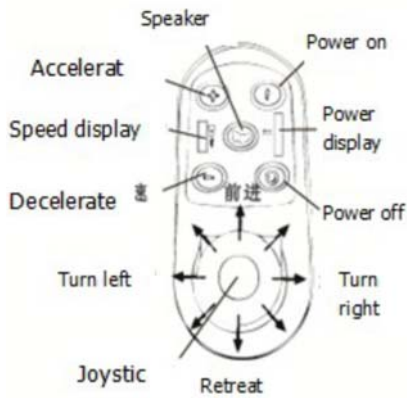


- Insert the controller joystick into the armrest tube and tighten the knob to fix it in position
- Plug the four prong side into the battery socket. Keep in mind the orientation of the plug and socket so they are aligned properly.



## Joystick Operation

---

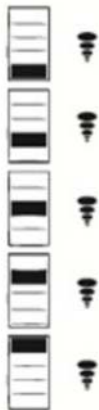


### Joystick Function Keys

- **Joystick:** controls the chair's direction and speed.
- **Power on:** press to turn on the power
- **Power off:** press to turn off the power
- **Power display:** There are three colors of the LED lights. Red, yellow and green. Indicates power left in the batteries
- **Speaker:** Horn, that sounds when the user presses the button.
- **Accelerate Max. Speed:** press to adjust to higher speed.
- **Decelerate Max. Speed:** press to adjust to slower speed
- **Speed display:** All lights on means it is set to max speed.

## Fault Display

---



**Indicator light 1:** If the red light flashes it means the battery is low

**Indicator light 2:** If the red light flashes it means joystick has no communication signal

**Indicator light 3:** If the red light flashes it means the battery is charging

**Indicator light 4:** If the red light flashes it red light flashes it means the motor is not connected.

**Indicator light 5:** If the red light flashes it red light flashes it means the Electromagnetic brake is not connected

**\*\*Refer to the "Troubleshooting" page for any other problems not covered here.**

---

## Electric Operation

---

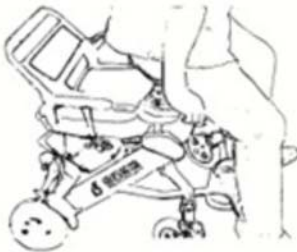


After the user is seated in the chair, turn on the power and push joystick.

- Pushing the joystick forward to go forward.
- Pulling joystick back to go back.
- Pushing joystick left to turn left.
- Pushing joystick right to turn right.

The chair will go faster when the magnitude is greater.

- Release the joystick to park the chair.
- Press the power off button to shut down the power.
- If you need to push the chair, please switch the clutch handle to the separation position.
- For more info please refer to the "Safety Guide".



### Warning!



- DO NOT use the joystick unless you are sitting in the chair.
- DO NOT disconnect any plugs by pulling on the wire. Disconnect by pulling the plugs from the sockets to prevent damage to the wiring.

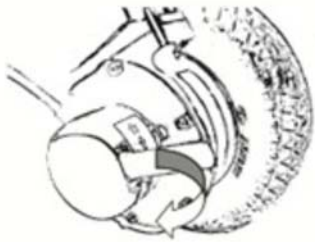


- The cable should be around armrest in order to avoid pulling on the joystick.
- DO NOT DRINK AND DRIVE. Operating the chair is prohibited while intoxicated. Failure to comply could lead to serious injury or even death.



## Manual Operation

---



- Press down on the clutch handle to keep the electromagnetic brake at the **separation position**. This will allow the wheels to move freely so someone can push the chair.
- Lift the clutch handle up to keep the electromagnetic brake at the **engaged position**. When the chair is powered electrically, the chair can not be pushed manually.



- If the user operates the chair without assistance, the electromagnetic brake must be at the engaged position. Otherwise, the user will not have control over the chair.
- Keep the electromagnetic brake at the engaged position in order to give full control of the chair to the user so they can operate it safely.

## Transport & Storage

---



- To pick up the chair, stand it up when it is folded. One hand should be placed on the seat cushion beneath the tube. lift and transport the chair.
- Folding method please refer to “Opening & Folding”
- Folded chair can be stored in the car trunk.
- The battery should be fully charged and the chair should be placed in cool, dry, and ventilated place in case of the chair will long-term placement.

\*\*Again, the battery needs to be charged once every three months, otherwise it could lead to over-discharge damage.

---

## Transport & Storage

---



- Avoiding storing the chair around heat, cold or direct sunlight. The rubber parts will age quicker and shorten the service life.
- The battery is very sensitive to high (hot) temperature environments and it may cause to start a fire.
- There are electronic components in the joystick. Avoid pressing and putting too much pressure on it
- There is/are lithium battery/batteries at the side and bottoms of the frame.
- Please avoid putting pressure on the battery, it will cause a burn and/or a fire.

## Maintenance and Testing

---



- Periodically check if the frame connector screws are loose every 6 months. Tighten them if they are loose
- Check if the front and rear wheels are rotating easily. If there is significant resistance, please change the bearing.
- Check if the tires, armrest and other rubber and plastic parts are wearing. Replace them accordingly.



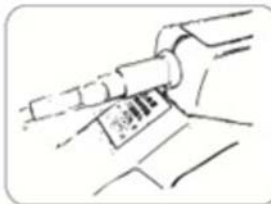
- Check if the battery connectors have oxidized. If so, please replace them.



- Check if the folding locks work. If it is loose or jamming, please replace it promptly.

- Check the anti-tip wheels/device. If it is loose or jamming, please replace it promptly.

- Parts replacement should be done by professional repair shop or maintenance service personnel. DO NOT replace them by yourself.



## Trouble Shooting

---

#	Problem	Reason	Solution
1	Power won't turn on	<ul style="list-style-type: none"> <li>• Controller host power is not connected</li> <li>• Controller host and joystick are not connected</li> <li>• Battery power is too low</li> </ul>	<ul style="list-style-type: none"> <li>• Connect host power</li> <li>• Connect four core plug with joystick</li> <li>• Charge the battery</li> </ul>
2	Flashing red lights on Joystick Controller	<ul style="list-style-type: none"> <li>• No.1 Red Light Flash: Low Battery</li> <li>• No.2 Red Light Flash: Joystick is without communication signal</li> <li>• No.3 Red Light Flash: In Charging</li> <li>• No.4 Red Light Flash: The motor is not connected</li> <li>• No.5 Red Light Flash: Electromagnetic Brake is not connected</li> </ul>	<ul style="list-style-type: none"> <li>• Charge the battery</li> <li>• Connect four core plug with joystick or replace joystick</li> <li>• DO NOT turn on or operate the chair during charging</li> <li>• Insert motor cable and tighten the plug</li> <li>• Insert motor cable and tighten the plug</li> </ul>
3	Vibration and noise exist while chair start moving.	<ul style="list-style-type: none"> <li>• Limited Max speed is too low</li> <li>• The motor is damaged</li> </ul>	<ul style="list-style-type: none"> <li>• Adjust the max speed</li> <li>• Replace the motor</li> </ul>
4	Endurance mileage is shortened	<ul style="list-style-type: none"> <li>• At below 0 degrees Celsius</li> <li>• Driving on uneven pavement or slope</li> </ul>	<ul style="list-style-type: none"> <li>• This is normal characteristics of the battery</li> <li>• Energy consumption will increase on uneven pavement and slopes. This is normal.</li> </ul>
5	Battery Charging Faults	<ul style="list-style-type: none"> <li>• Charger light does not turn on</li> <li>• Charger light is always green</li> <li>• Charging time is shorten</li> </ul>	<ul style="list-style-type: none"> <li>• Replace the Charger</li> <li>• Four core plug is not connected with the joystick or replace the battery</li> <li>• Capacity has decreased, replace the battery</li> </ul>

---



## Technical Specifications

---

Parameter	Imperial Units	Metric Units
Device Weight (with battery)	50.7 pounds	23 kg
Max Capacity	264.5 pounds	120 kg
Unfolded Dimensions (L x W x H)	31.5 inches x 22.4 inches x 33.1 inches	80 cm x 57 cm x 84 cm
Folded Dimensions (L x W x H)	28.5 inches x 22.4 inches x 12.25 inches	72.4 cm x 56.9 cm x 31.1 cm
Seat Size (L x W)	16.75 inches x 15.25 inches	42.5 cm x 38.7 cm
Seating Height (from ground)	20 inches	50.8 cm
Arm Rest Height (from ground)	28.25 inches	71.75 cm
Turning Radius	29.5 inches	75 cm
Maximum Speed	5 miles per hour	8 km per hour
Distance on Full Battery	15 miles	20 km
Ground Clearance	3.9 inches	10 cm
Front Wheels (diameter x width)	7 inches x 1.5 inches	17.8 cm x 3.8 cm
Rear Wheels (diameter x width)	8 inches x 2 inches	20.3 cm x 5.1 cm
Incline Capability	20° (12% slope)	
Wheel Material	A mix of Polyurethane and Rubber (for smoother ride/shock absorption)	
Motor Type	Brush-less Motor, 24V DC, 180Wx2 Power Rating	
Battery	Lithium Ion Phosphate, 10Ah (Ampere hour) Capacity, 24V DC Output	
Charger	Input: AC 100V-240V~1.8A Max 47Hz-63Hz, Output: DC 29.2V - 2A	
Brake Type	Electromagnetic Brakes	

---



## Service History

---

Date	Description of Service

## Warranty

---

Part	Coverage	Remarks
Frame	3 Years	Non-deliberate damage
Motor	3 Years	Non-deliberate damage
Battery	2 Years	Non-deliberate damage
CPU	1 Year	Non-deliberate damage
Joystick	1 Year	Non-deliberate damage
Wearing Parts	3 Months	Tire, Seat, Backrest, Armrest

---



---

**Website:** [www.EZLiteCruiser.com](http://www.EZLiteCruiser.com)

**E-mail:** [support@ezlitecruiser.com](mailto:support@ezlitecruiser.com)

**Phone (Toll Free):** 1-(888) 544-6054