



**USER MANUAL**  
**MANUEL D' UTILISATION**  
**BEDIENUNGSANLEITUNG**  
**MANUAL DE UTILIZACIÓN**  
**MANUALE UTENTE**

# e:i shock USER MANUAL



# ENGLISH

## **e:i shock display functions**



**A. LCD LAY OUT**

**B. GENERAL FUNCTIONS**

**C. SETTINGS**

**D. OTHERS FUNCTIONS**

**E. OTHERS INFORMATIONS**

## A. LCD LAY OUT

1. Controllers map
2. Other symbols

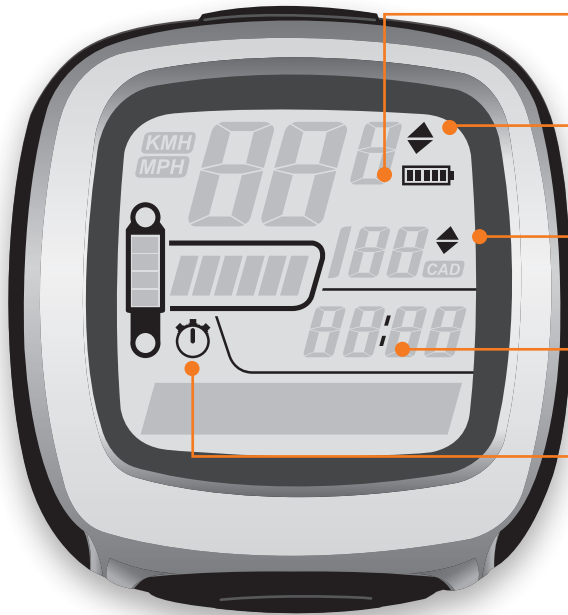


# 1. Controllers map



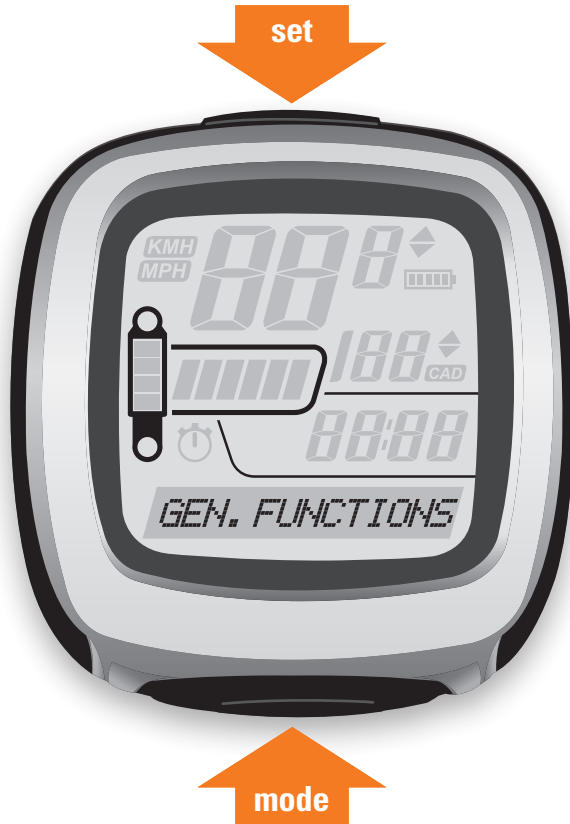
- Indicates average speed status. MPH or KMH
- Shows the current speed.
- Indicates current cadence.
- Shows shock mode. AUTO - OPEN - MEDIUM - LOCKED
- Indicates time.
- LCD screen shows the different functions and settings.

## 2. Other symbols



- Indicates battery status.
- Shows over or under average speed.
- Shows over or under average cadence.
- Double point in clock blinks, indicates seconds.
- Blinks when stopwatch is running.

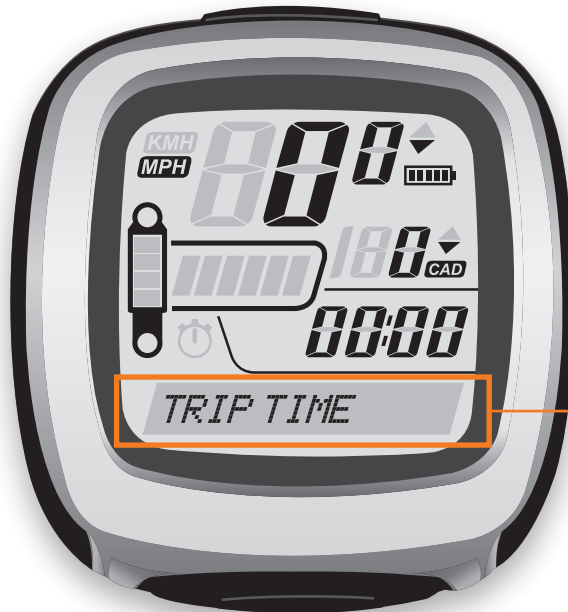
## B. GENERAL FUNCTIONS



1. Function loop operation
2. Reset trip
3. Enter settings menu
4. Settings operation
5. e:i shock

# 1. Function loop operation

- Press **mode** to switch functions in dot matrix.
- 1 push = 1 step.



## FUNCTIONS

TRIP DIST	0.00
TRIP TIME	00:00:00
SPEED AVG	0.0
SPEED MAX	0.0
CAD AVG	0
ODO TOTAL	00000
TIMER	00:00:00:0
TEMP	°C



## 2. Reset trip

- Press **set** for 3 seconds to reset.
- Reset function works only within and for the orange marked functions below.



### FUNCTIONS

TRIP DIST	0.00
TRIP TIME	00:00:00
SPEED AVG	0.0
SPEED MAX	0.0
CAD AVG	0
ODO TOTAL	00000
TIMER	00:00:00:0
TEMP	°C

### 3. Enter settings menu

- Press both buttons for 3 seconds to enter the settings menu.  
Visible in lower dot matrix.

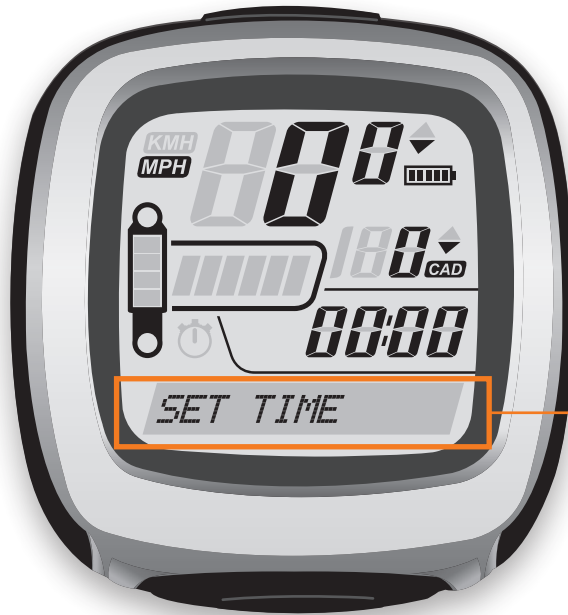


#### SETTINGS

- SENSITIVITY
- EXIT SETTINGS
- ENGLISH
- MPH / KM/H
- SET WHL SIZE
- SET TIME
- ODO TOTAL
- TEMP °C
- EXIT SETTINGS

## 4. Settings operation

- Press **mode** to switch settings in dot matrix.



### SETTINGS

SENSITIVITY

EXIT SETTINGS

ENGLISH

MPH / KM/

SET WHL SIZE

SET TIME

ODO TOTAL

TEMP °C

EXIT SETTINGS

## 4. Settings operation

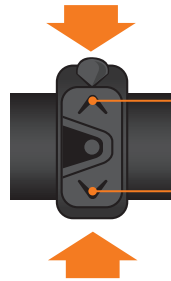
- Press **set** to adjust settings.
- Press **mode** to switch inside the setting.



### SETTINGS

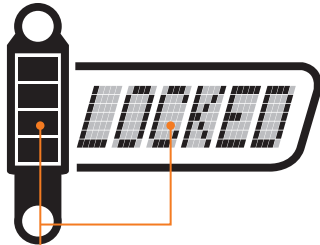
- SENSITIVITY
- EXIT SETTINGS
- ENGLISH
- MPH / KM/H
- SET WHL SIZE
- SET TIME
- ODO TOTAL
- TEMP °C
- EXIT SETTINGS

## 5. e:i shock

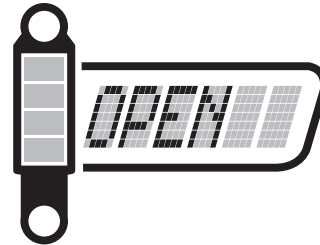
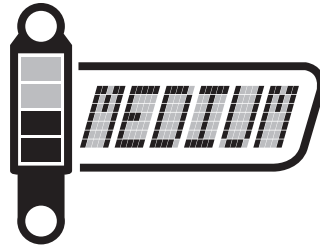


- Switch back and forth between the different levels with the HBC (Handlebar Controller).

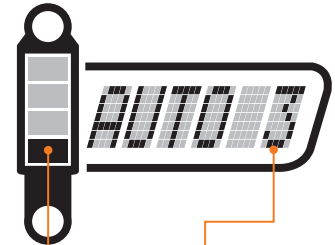
### STATIC FEEDBACK



- Static filling of the damper symbol corresponds with the setting.



### DYNAMIC FEEDBACK



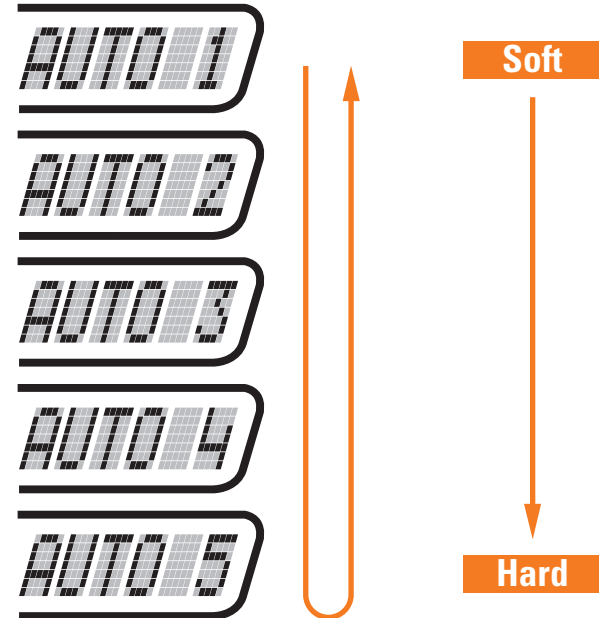
- Sensitivity for AUTO can be set in 5 levels in settings menu.

Dynamic filling of damper symbol corresponds with the activity of the shock sensor (also sensor test).

## 5. e:i shock

- Sensitivity for AUTO can be set in 5 levels in settings menu.
- Mode AUTO 1 is the softer, AUTO 5 is the harder.
- Press **set** to switch sensitivity levels.

### LEVELS



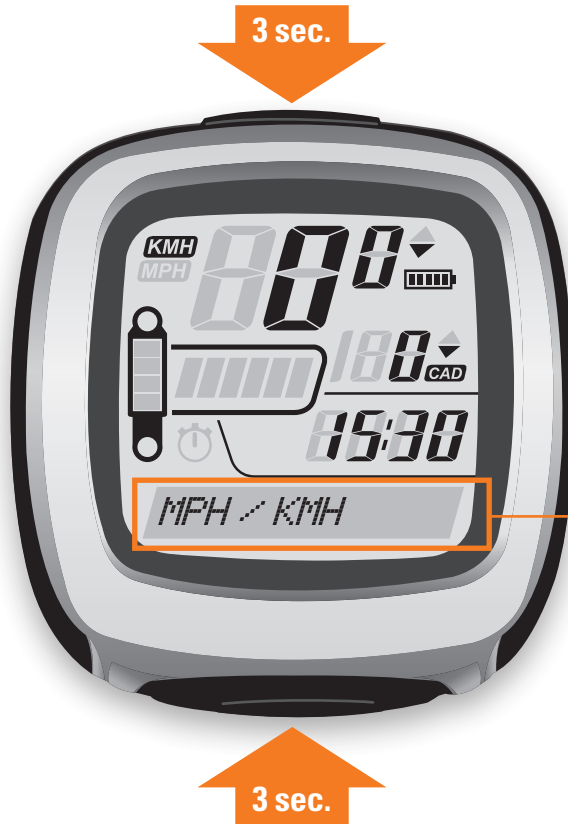
## C. SETTINGS



1. MPH / KMH settings
2. Wheel size
3. Time
4. Total distance
5. Temperature
6. e:i shock sensitivity
7. Exit menu

## 1. MPH / KMH settings

- Press both buttons for 3 seconds to enter the settings menu.  
Visible in lower dot matrix.
- Press **mode** 3 times to select the MPH / KMH menu.



### SETTINGS

SENSITIVITY

EXIT SETTINGS

ENGLISH

MPH / KMH

SET WHL SIZE

SET TIME

ODO TOTAL

TEMP °C

EXIT SETTINGS



## 1. MPH / KMH settings



- Press **set** to change KMH in MPH.
- User will see MPH and KMH change in the upper left corner of the screen.
- Automatically, all distances in the computer will be calculated and displayed in either KMH or MPH.

### SETTINGS

SENSITIVITY

EXIT SETTINGS

ENGLISH

MPH / KMH

SET WHL SIZE

SET TIME

ODO TOTAL

TEMP °C

EXIT SETTINGS

## 2. Wheel size settings

- Press **mode** until "SET WHL SIZE 0000" appears in the settings menu.



mode

### SETTINGS

- SENSITIVITY
- EXIT SETTINGS
- ENGLISH
- MPH / KM/H
- SET WHL SIZE 0000
- SET TIME
- ODO TOTAL
- TEMP °C
- EXIT SETTINGS

## 2. Wheel size settings

- Press **set** and the first number will start blinking.
- Press **mode** to change the first number.
- Press **set** to jump to the next number.
- Press **mode** to change the second number. etc.
- After the last number, press **set** and no numbers will blink, the size is set. Size is always in mm.

### SETTINGS

SENSITIVITY

EXIT SETTINGS

ENGLISH

MPH / KMH

SET WHL SIZE 2026

SET TIME

ODO TOTAL

TEMP °C

EXIT SETTINGS

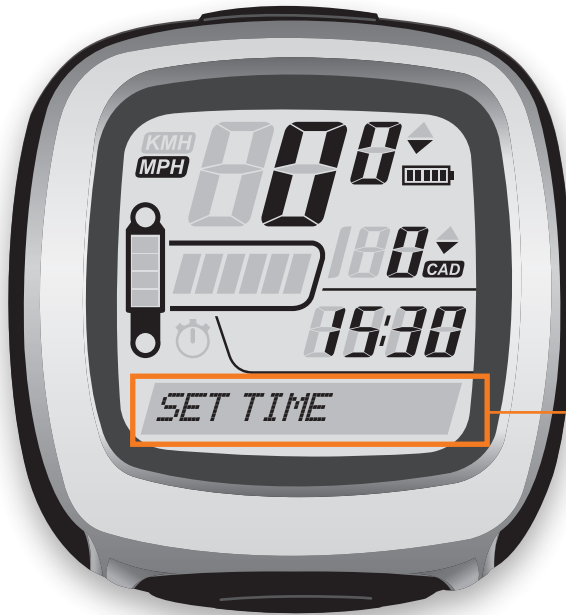


## 2. Wheel size chart

ETRTO	Wheel Size	mm
40-559	26x1.5	2026
44-559	26x1.6	2051
47-559	26x1.75x2	2074
50-559	26x1.9	2089
54-559	26x2.00	2114
57-559	26x2.125	2133
37-590	26x1 3/8	2105
20-571	26x3/4	1954
60-559	26x2.35	2146
54-622	29x2.1	2288
57-622	29x2.3	2326

### 3. Time settings

- Press **mode** until “ SET TIME ” appears in the settings menu.



mode

#### SETTINGS

SENSITIVITY

EXIT SETTINGS

ENGLISH

MPH / KM/H

SET WHL SIZE

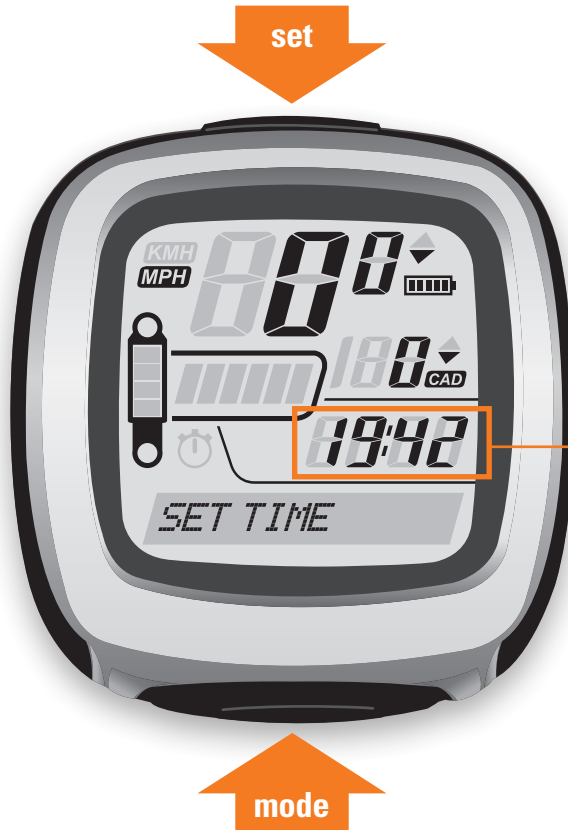
SET TIME

ODO TOTAL

TEMP °C

EXIT SETTINGS

### 3. Time settings



- Press **set** and the first number will start blinking.
  - Press **mode** to change the number.
  - Press **set** to jump to the next number.
  - Press **mode** to change the second number.
- Then, press **set** and no numbers will blink, the time is set.

#### SETTINGS

SENSITIVITY

EXIT SETTINGS

ENGLISH

MPH / KMH

SET WHL SIZE

SET TIME

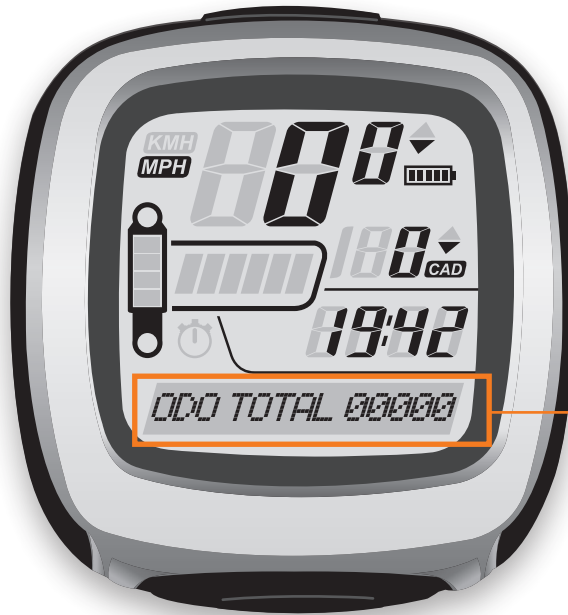
ODO TOTAL

TEMP °C

EXIT SETTINGS

## 4. Total distance settings

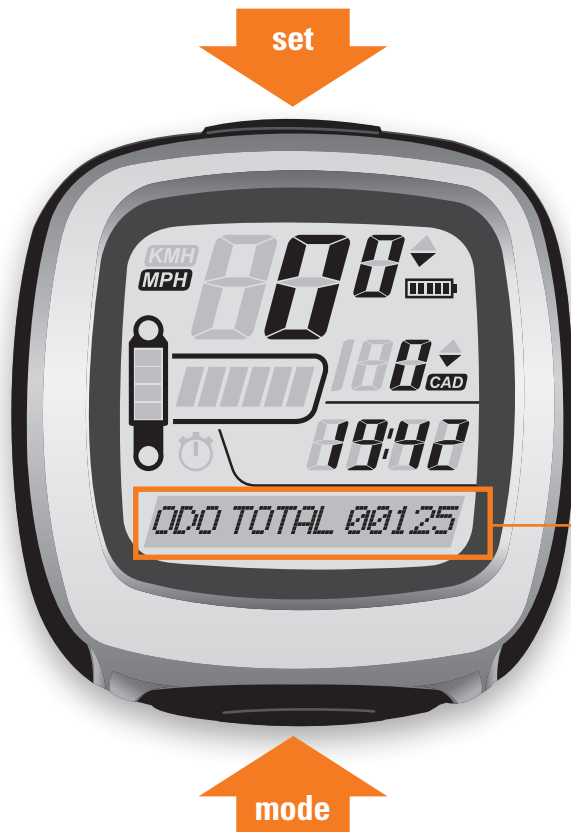
- Press **mode** until “ODO TOTAL 00000” appears in the settings menu.



mode

### SETTINGS

- SENSITIVITY
- EXIT SETTINGS
- ENGLISH
- MPH / KM/H
- SET WHL SIZE
- SET TIME
- ODO TOTAL 00000
- TEMP °C
- EXIT SETTINGS



## 4. Total distance settings

- Press **set** and the first number will start blinking.
- Press **mode** to change the number.
- Press **set** to jump to the next number.
- Press **mode** to change the second number. etc.  
After the last number, press **set** and no numbers will blink, the odo total is set.

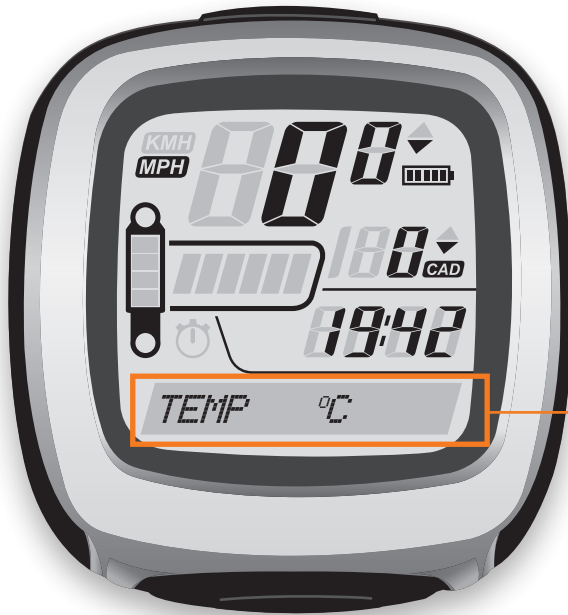
### SETTINGS

SENSITIVITY
EXIT SETTINGS
ENGLISH
MPH / KM/H
SET WHL SIZE
SET TIME
ODO TOTAL 00125
TEMP °C
EXIT SETTINGS



## 5. Temperature settings

- Press **mode** until “TEMP °C” appears in the settings menu. °C is blinking.



mode

### SETTINGS

SENSITIVITY

EXIT SETTINGS

ENGLISH

MPH / KMH

SET WHL SIZE

SET TIME

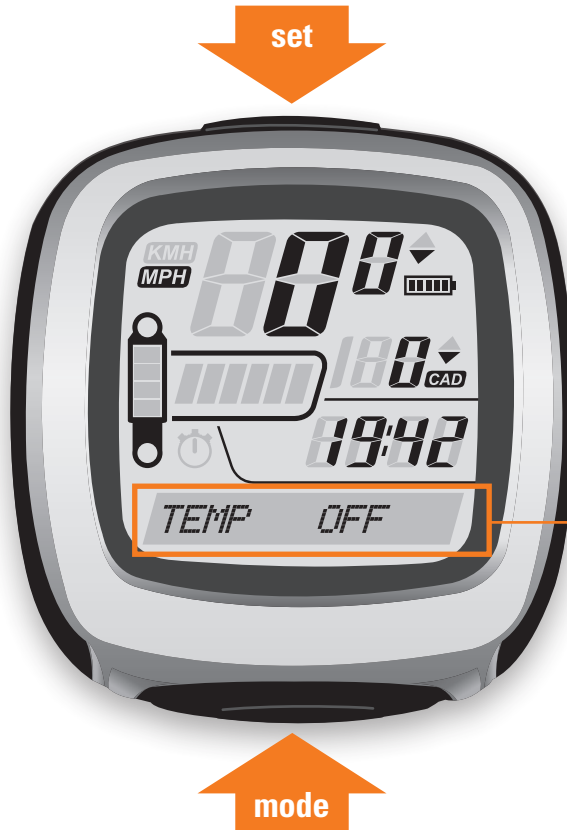
ODO TOTAL

TEMP °C

EXIT SETTINGS

## 5. Temperature settings

- Press **set** to switch between °C (Celsius), °F (Fahrenheit) and OFF (Temp function not visible in function loop).
- Press **mode** to return to main menu.

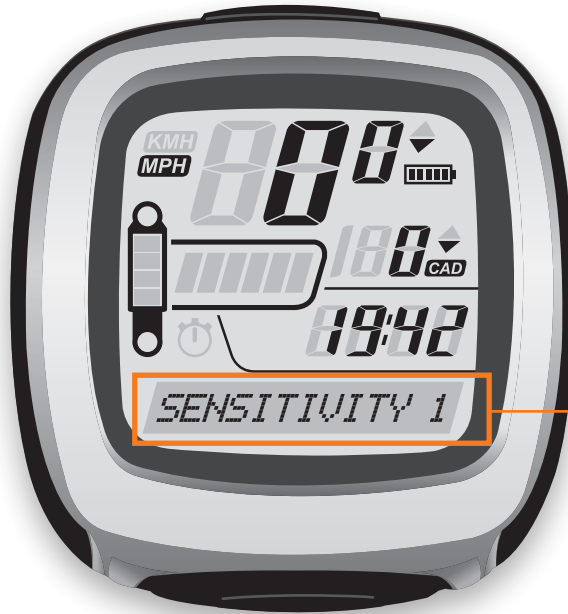


### SETTINGS

- SENSITIVITY
- EXIT SETTINGS
- ENGLISH
- MPH / KM/H
- SET WHL SIZE
- SET TIME
- ODO TOTAL
- TEMP °C
- EXIT SETTINGS

## 6. e:i shock sensitivity

- Press **mode** until “ SENSITIVITY 1 ” appears in the settings menu.



### SETTINGS

- SENSITIVITY 1
- EXIT SETTINGS
- ENGLISH
- MPH / KM/H
- SET WHL SIZE
- SET TIME
- ODO TOTAL
- TEMP °C
- EXIT SETTINGS

## 6. e:i shock sensitivity

- Press **set** to change in 5 levels.
- AUTO indicates the system is in auto mode and the number indicates the level of sensitivity.
- Press **mode** to return to main menu.



### SETTINGS

SENSITIVITY 3  
EXIT SETTINGS  
ENGLISH  
MPH / KMH  
SET WHL SIZE  
SET TIME  
ODO TOTAL  
TEMP °C  
EXIT SETTINGS

### LEVELS

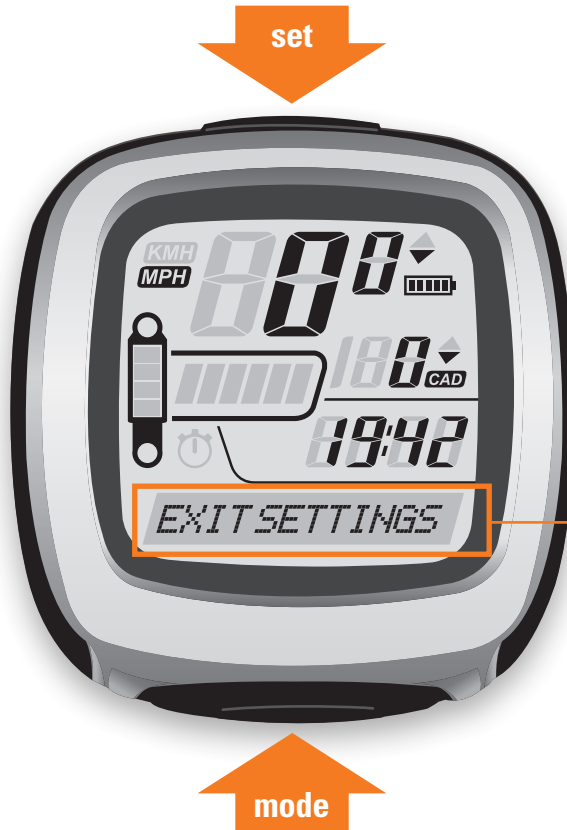
AUTO 1  
AUTO 2  
AUTO 3  
AUTO 4  
AUTO 5

Soft

Hard

## 7. Exit menu

- Press **mode** until “EXIT SETTINGS” appears in the settings menu.
- Press **set** to exit Settings Menu and to return to normal Function Loop.



### SETTINGS

SENSITIVITY	TRIP DIST	0.00
EXIT SETTINGS	TRIP TIME	00:00:00
ENGLISH	SPEED AVG	0.0
MPH / KMH	SPEED MAX	0.0
SET WHL SIZE	CAD AVG	0
SET TIME	ODO TOTAL	00000
ODO TOTAL	TIMER	00:00:00:0
TEMP °C	TEMP °C	
EXIT SETTINGS		

### FUNCTIONS

## D. OTHERS FUNCTIONS

1. Languages
2. Timer - Stopwatch



## 1. Languages

- Press **mode** until " ENGLISH " appears in the settings menu.



mode

### SETTINGS

- SENSITIVITY
- EXIT SETTINGS
- ENGLISH
- MPH / KMH
- SET WHL SIZE 0000
- SET TIME
- ODO TOTAL
- TEMP °C
- EXIT SETTINGS

## 1. Languages

- Press **set** to switch in the languages menu.
- You can choose between ENGLISH / FRANÇAIS / DEUTSCH / ESPAÑOL / ITALIANO.
- Press **mode** to return to settings menu.



### SETTINGS

SENSITIVITY

EXIT SETTINGS

ENGLISH

MPH / KM/H

SET WHL SIZE 0000

SET TIME

ODO TOTAL

TEMP °C

EXIT SETTINGS

ENGLISH

FRANCAIS

DEUTSCH

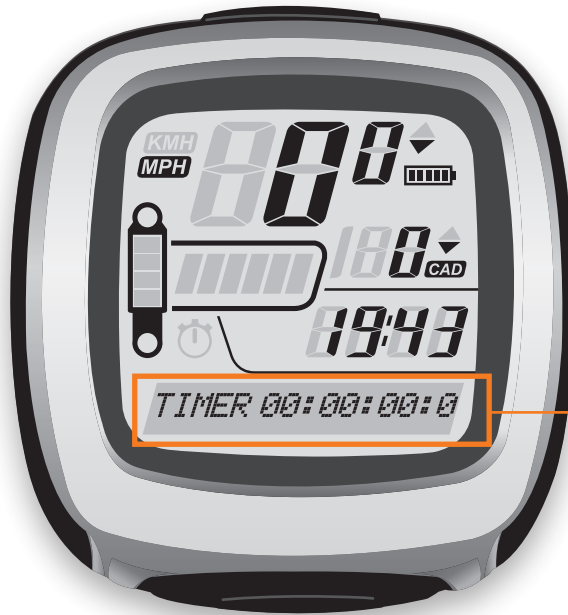
ESPAÑOL

ITALIANO



## 2. Timer - Stopwatch

- Press **mode** until "TIMER" appears in the functions loop menu.



mode

### FUNCTIONS

TRIP DIST	0.00
TRIP TIME	00:00:00
SPEED AVG	0.0
SPEED MAX	0.0
CAD AVG	0
ODO TOTAL	00000
TIMER	00:00:00:0
TEMP °C	

## 2. Timer - Stopwatch

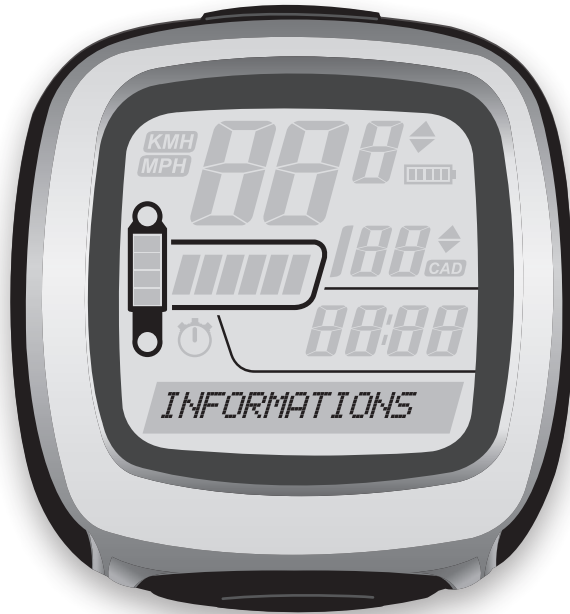


- Press **set** to start the Timer. ( Icon starts blinking)
- Press **set** to stop the Timer. ( Icon disappears)
- Press **set** for 3 seconds to reset the Timer. ( 00:00:00:0)
- Press **mode** to return to main menu.

### FUNCTIONS

TRIP DIST	0.00
TRIP TIME	00:00:00
SPEED AVG	0.0
SPEED MAX	0.0
CAD AVG	0
ODO TOTAL	00000
TIMER	00:01:02:8
TEMP °C	

## E. OTHERS INFORMATIONS



1. Battery Recommendations
2. SRAM Shock Failsafe Adjuster

# 1. Battery Recommendations

The following instructions must be observed at all times in order to prevent personal injury and physical damage to equipment and surroundings.



## DANGER



- Do not use anything other than the special charger to charge the battery. In addition, do not use the battery for any devices other than the e:i shock series.
- Do not heat the battery or throw it into the fire.
- Do not leave the battery in places which may exceed 60°C in temperature, such as places which are exposed to direct sunlight inside vehicles on hot days or near stoves.
- Do not disassemble or modify the battery or apply solder directly to the battery terminals.
- Do not connect the terminals with metallic objects. Do not carry or store the battery together with metallic objects such as necklaces or hairpins.
- If any liquid leaking from the battery gets into the eyes, immediately wash the affected area with clean water without rubbing the eyes, and then seek medical advice.
- Failure to follow the instructions will result in death or serious injury.
- If any non-specified items are used, fire, overheating or leakages may occur.
- If this is not observed, fire or bursting may occur.
- If this is not observed, leakages, overheating or bursting may cause fire, burns or other injury to occur.
- If this is not observed, leakages, overheating or bursting may cause fire, burns or other injury to occur.
- If this is not observed, short-circuits, overheating, burns or other injury may occur.
- If this is not done, blindness may occur.



## WARNING



- If charging is not complete after 1.5 hours of charging time has elapsed, stop the charging.
- Do not place the battery into fresh water or sea water, and do not allow the battery terminals to get wet.
- The operating temperature ranges for the battery are given below. Do not use the battery in temperatures outside these ranges:
  1. During discharge:  $-10^{\circ}\text{C} - 55^{\circ}\text{C}$
  2. During charging:  $0^{\circ}\text{C} - 45^{\circ}\text{C}$
  3. During storage (less than one year):  $-20^{\circ}\text{C} - 35^{\circ}\text{C}$
- Do not use the battery if it has any noticeable scratching or other external damage.
- Do not subject the battery to strong shocks or throw it.
- Do not use the battery if leakages, discoloration, deformation or any other abnormalities occur.
- If any leaked fluid gets on your skin or clothes, wash it immediately with clean water. The leaked fluid may damage the skin.
- Failure to follow the instructions could result in death or serious injury.

## 1. Battery Recommendations

- If this is not observed, fire, bursting or overheating may occur.
- If this is not observed, fire, bursting or overheating may occur.
- If the battery is used or stored in temperatures which are outside these ranges, fire, injury or problems with operation may occur.
- If this is not observed, bursting, overheating or problems with operation may occur.

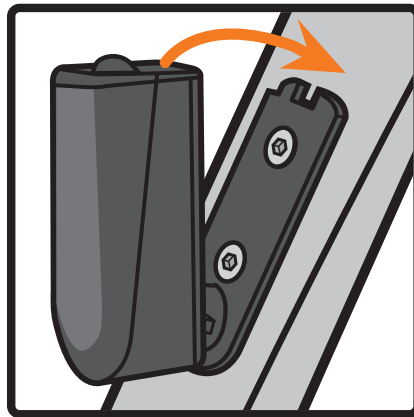
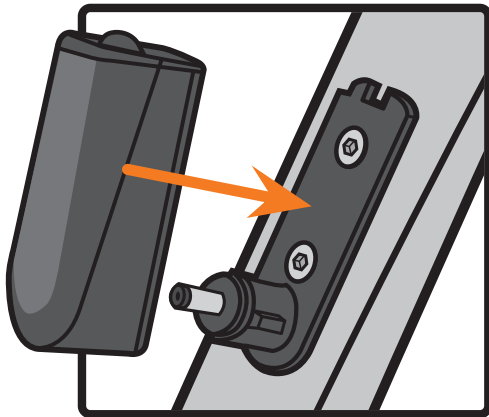
## 1. Battery Recommendations



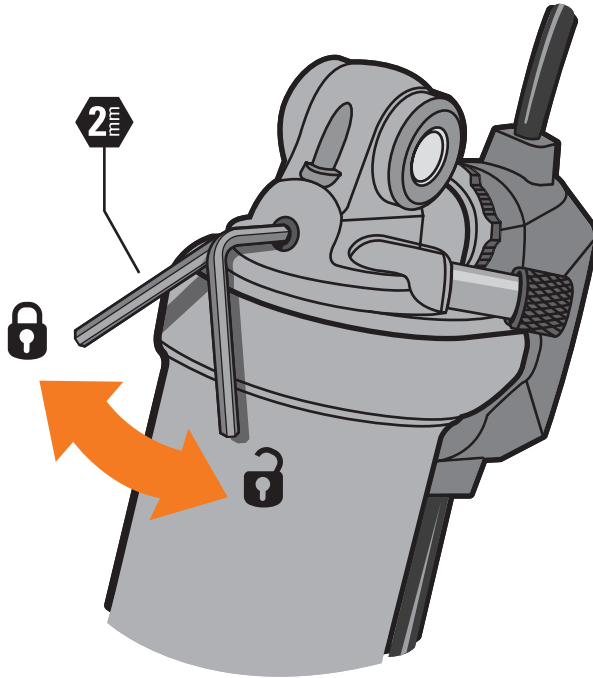
### CAUTION



- Store the battery in a safe place away from the reach of infants and pets.
- If not using the battery for long periods, remove it and store it away in a safe place.
- Inform yourself about the disposing of used batteries. Batteries do not belong in the trash.
- Failure to follow the instructions could cause personal injury or physical damage to equipment and surroundings.



## 2. Failsafe Adjuster



- If the shock motor ceases to function (i.e. battery dies, wire cut ...), it will remain in the mode it was in when it stopped.
- To adjust the shock mode, use a 2 mm hex wrench on the failsafe adjuster bolt to manually set the shock to either the open or lock mode.
- If the failsafe adjuster bolt cannot be accessed, unbolt the shaft eyelet according to your bicycle manufacturer's instructions.
- Manually adjust the shock to either the open or lock mode using the failsafe adjuster bolt, then reinstall the shaft eyelet according to your bicycle manufacturer's instructions.



## CONTACTS

# GHOST®

**GHOST-BIKES GMBH**  
AN DER TONGRUBE 3  
D - 95652 WALDSASSEN

TEL. +49 (0) 9632 92 55-0  
FAX. +49 (0) 9632 92 55-16  
INFO@GHOST-BIKES.DE  
**WWW.GHOST-BIKES.COM**

# HAIBIKE

**HAIBIKE Winora-Staiger GmbH**  
MAX-PLANCK-STR. 6  
97526 SENNFELD - POSTFACH 1422  
D - 97404 SCHWEINFURT

TEL. +49 (0) 9721 65 01-0  
FAX. +49 (0) 9721 65 94-45  
INFO@HAIBIKE.DE  
**WWW.HAIBIKE.DE**

# LAPIERRE®

**CYCLES LAPIERRE**  
RUE EDMOND VOISENET  
BP 50573  
21005 DIJON CEDEX

TEL. +33 (0) 380 525 186  
FAX. +33 (0) 380 520 851  
INFO@LAPIERREBIKES.CO  
**WWW.LAPIERREBIKES.COM**





***GHOST®***

***HAIBIKE***

***LAPIERRE®***

