

RS0103 Rolling shutter controller user manual A0

I. Technical parameters

1. Working voltage: 24V AC
2. Temperature range: -20°C to 60°C
3. Loading capacity: 100W, 24VDC
4. Built-in fuse: motor (10A), electric circuit (0.5A);
please exchange appropriate fuse according to loading capacity
5. Working frequency: 433.92MHz
6. Stored transmitters: 6pcs

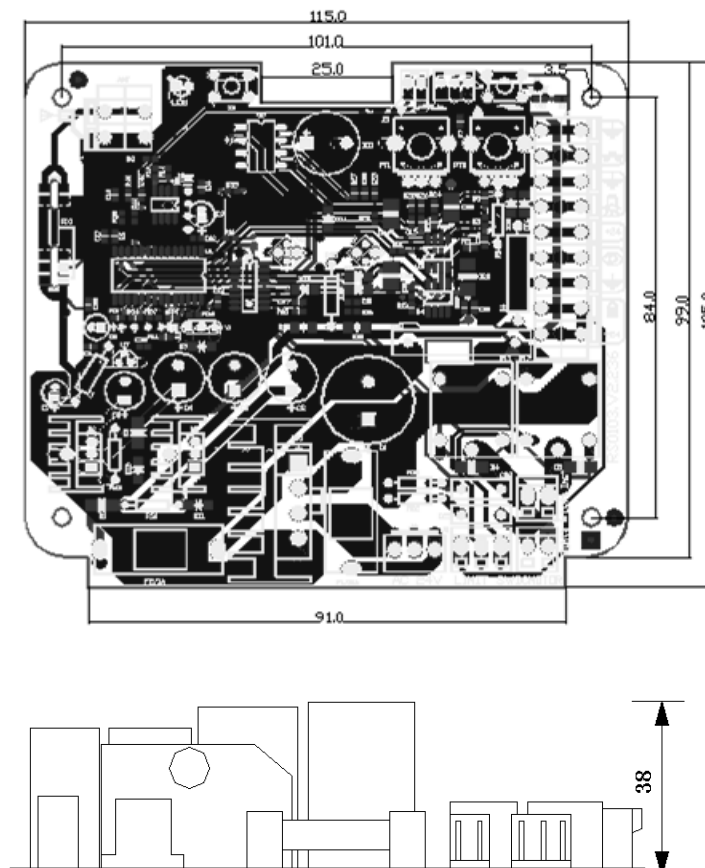
II. Safety Instruction

1. For security, please read instructions carefully before initial operation; making sure that the power connection.

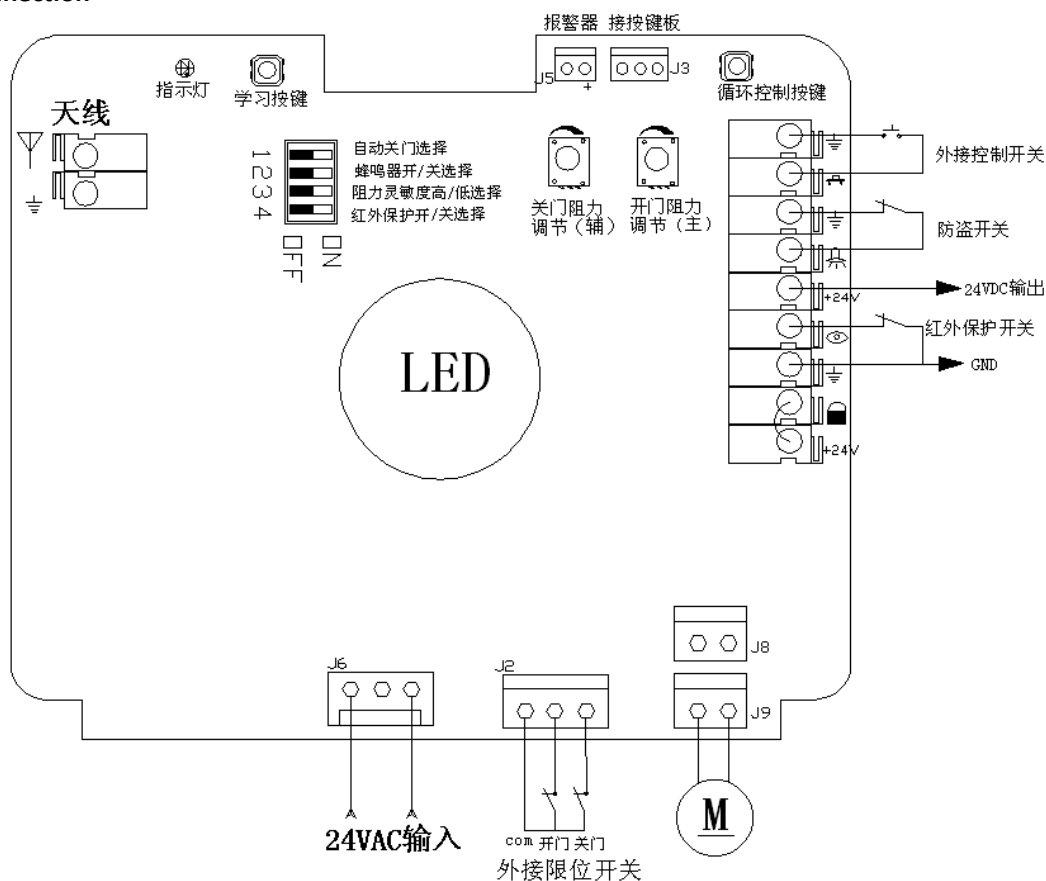
Please clear the memory before initial operation. (Ref: Erasing ALL learned/memorized Transmitters)

3. Do not learn the remote control when motor is operating in order to avoid mis-operation.
4. The received signal may be interfered by other communication devices. (e.g. the wireless control system frequency range)
5. It is forbidden to control the high-risk coefficient equipment / system. (e.g. cranes)
6. It is used only for the manual remote control and wireless control equipment / system which must not er property during running failure, or its security risks have been eliminated
7. It should be applied in dry indoor place or in the electric appliance place.

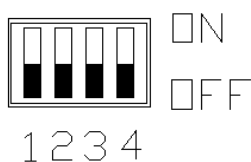
III. Size



IV、Connection



4.1 DIP Switch



DIP 1:
Auto close
function is on
when DIP 1
at ON

DIP 2:
Buzzer beeps
after every
operation when
DIP 2 at ON

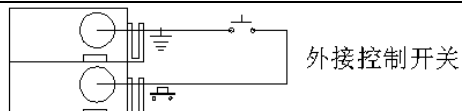
DIP 3:
Increase the
sensitivity of
resistance when
DIP 3 at ON

DIP 4 :
Photocell
protection is
on when DIP
4 at off

4.2 Limit switch port J2: External limit switch NC contact, otherwise cannot open or close door.

4.3 Motor Port J8、J9: They are used for changing the running direction of motor. If motor runs in positive direction when connects J8, switch J8 with J9, and motor will run in negative direction.

4.4 External switch of control: It's single button control (the same as port J3 on button board) and controls the motor veering-stop-reversal-stop



4.5 Photocell protection switch:

It is only available when door is closing, if the signal is Blocked during closing door, motor stops and door will reverse to limit point

1. Photocell protection switch could be point-contact
Or two wire type, both are NC.
2. Photocell protection is off if DIP 4 at ON.

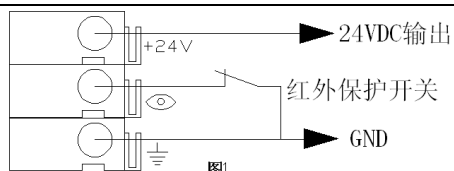


图1

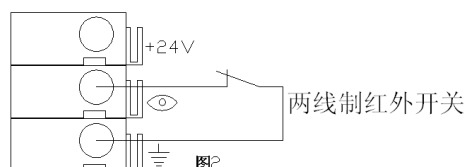
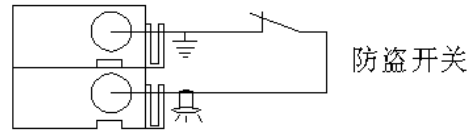
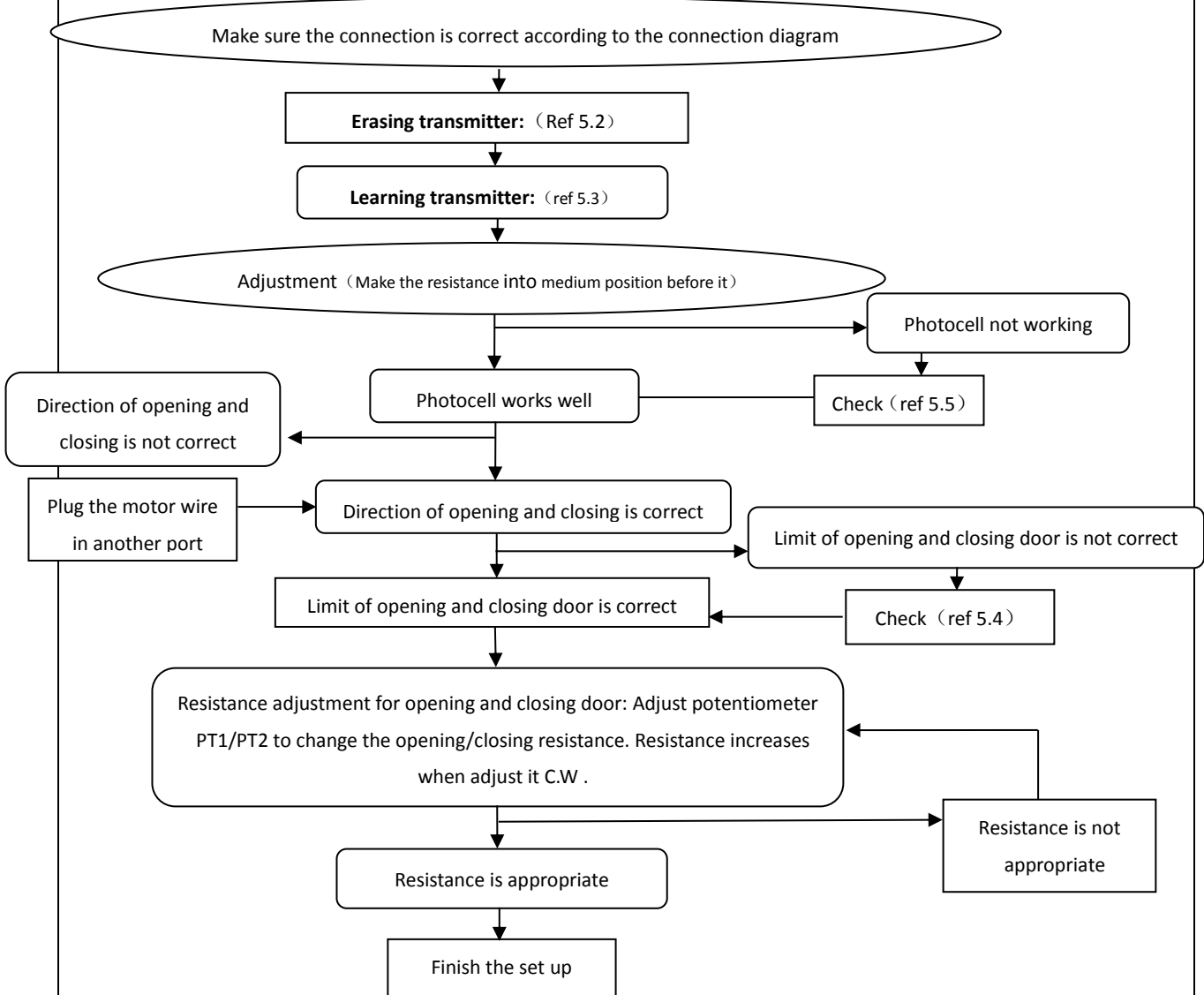


图2

4.6 Anti-theft switch: It connects NC switch and J5 port is at 23VDC alarm. It will the alarm if the door is forced to open when the door is closed to the limit. The port could be short circuit by shorting stub if this function is unused



V. Setting up process



5.1. Single remote button control: press-open-press-stop-press-close-press-stop

5.2. Erasing transmitter: Press the learning button, continue pressing for 8s until light turns off; Release learning button, light will be on (about 1s) and then off; The erasing process is successful.(ignore this step if transmitter already matches the opener before delivery)

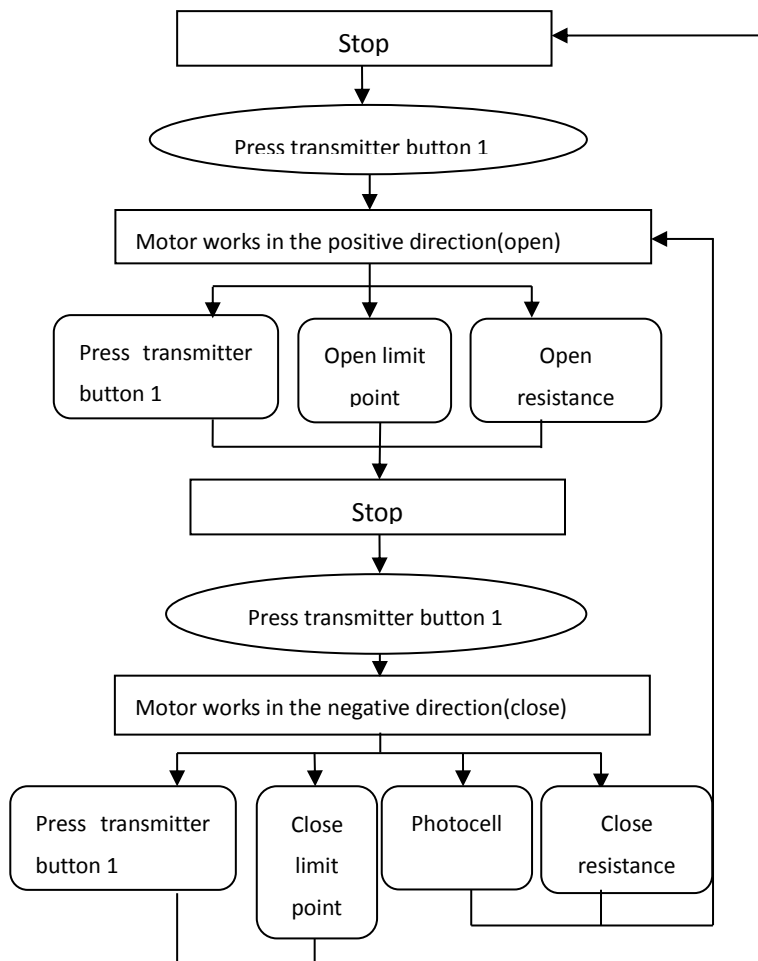
5.3. Learning transmitter: Press learning button S2 in the board, LED 2 turns on and it enters into the learning /memorizing transmitter process; press the same button twice in transmitter, light blinks for several times, then off. The learning process is successful (ignore this step if transmitter already matches the opener already).

5.4. Limit is wrong: 1,check if the wires of the limit are connecting well or connect the other way. 2, make sure the door can touch the limit switch when open or close the door fully.

5.5. Photocell protect switch: 1, Only work when closing,2, connects normally close switch of photocell protection 3. If the emitter and receiver module work well.(If the contact disconnect when the signed is blocked)

5.6. Resistance adjustment: Adjust potentiometer of opening door to change the opening and closing resistance. Adjust potentiometer of closing door to change the closing resistance. Make a resistance to door after the adjustment in order to check if it is appropriate.

VI、 Operating process



VII. Note

7.1 Battery life is about 6-12 month. User needs to replace with new battery if the indicated light in remote control is not working any more.