

User's Manual

LA-2124A

LA-5000 Series

Logic Analyzer with

Pattern Generator

Revision VI
Software Win98/me/2000/xp Version



CLOCK COMPUTER CORP.

<http://www.clock-link.com.tw>

Table of Contents

(LA-2124A, LA-5000 Series Win 98/me/2000/xp Version)

Item checklist (LA-2124A)	3
Item Checklist (LA-5000 Series)	3
System Requirements	3
Installing Hardware	3
Installing LA-5000 Series parallel port based Logic Analyzer	3
Installing LA-5000 Series, LA-2124A with USB 2.0 Adapter	4
Installing Software	4
Guide To Operation	5
Hardware	5
Logic Analyzer Pod Markings.....	5
Connecting wires to Logic Analyzer	6
Main Screen	7
Timing window	7
Multi-window	8
Trigger Mode (Trigger Menu)	10
Trigger mode setup (trigger menu)	11
<i>trigger word setup (LA-2124A)</i>	11
<i>How to set trigger word (LA-2124A)</i>	11
<i>Trigger position (LA-2124A)</i>	11
<i>trigger word setup (LA-5000 Series)</i>	12
<i>How to set trigger word (LA-5000 Series)</i>	13
<i>Trigger position (LA-5000 Series)</i>	14
<i>Trigger menu</i>	14
Threshold Voltage Setup	14
Clock Menu	15
Clock menu for LA-2124A.....	15
Clock menu for la-5540-256k, la-5580-256k and la-55160-256k	16
External clock (LA-2124A)	17
External clock (LA-5000 Series)	17
Zoom Combo	19
Zoom	20
Timing window	20
Setting Up The State Window	21
Setting channel names and colors	22
Export (File Menu)	23
File menu commands.....	24
Pattern editor	25

Accessories	27
Hardware / Software Specifications	27
Software (LA-2124A)	27
Memory Modes And Channel Specs	27
Memory mode.....	27
Window USB Driver Install	28
Windows 98/ME USB driver install.....	28
Windows 2000 USB driver install	30
Windows XP USB driver install	34
Windows Vista USB driver install	36
Certificate For LA-5000 Series and LA-2124A Introduction	40
Threshold voltage calibration	40
Trigger word and position calibration	40
Trigger sequential calibration	41
Clock source calibration.....	41
Characteristic Of LA-5000 Series and LA-2124A	42
Software Updates	46

Item checklist (LA-2124A)

**We assign LA-2124A hardware support USB interface only,
No external power source require.**

- 1) The LA-2124A Plastic unit.
- 2) Color wires Harness X1 and Easy Hook clips **X 30**.
- 3) LA-2124A User's Manual X 1.
- 4) CD for LA-2124A driver X 1.
- 5) USB 2.0 Adapter (**mark LA-2124A**) with cable (**1.0M in length**) X 1.

Item Checklist (LA-5000 Series)

- 1) The LA-5000 Series Aluminum unit.
- 2) Logic Pod :
X5 (LA-5240, LA-5540), **X 10** (LA-5280, LA-5580), **X 20** (LA-55160)
- 3) Color wires and Easy Hook clips:
X50 (LA-5240, LA-5540), **X 100** (LA-5280, LA-5580), **X 200** (LA-55160)
- 4) D-Sub 25 Pin Cable 125 CM (Male ↔ Female) X 1.
[AWM style 2990 80°C 30V VW-1 **IEEE 1284** compliant]
- 5) USB 2.0 Adapter with cable (**1.5M in length**) X 1.
- 6) DC Power Adapter :
5V/5A X 1 (LA-5240, LA-5280, LA-5540, LA-5580), **5V/10A** X 1 (LA-55160)
- 7) LA-5000 User's Manual X 1.
- 8) CD for LA-5000 driver X 1.
- 9) Pattern Generator Pod (this is optional to order)

System Requirements

In order to use the Logic Analyzer card, the following equipment is necessary:

Computer System: Pentium PC system with at least one bi-directional mode (EPP or BPP) or **USB interface (USB 1.1 or 2.0 version) LA-2124A hardware support USB interface only,**

Memory: A minimum of 128 Mega free RAM.

Mass Storage: At least one CD drives and hard disk drives.

Display Adapter: At least one of VGA Adapter.

Monitor: Any monitor compatible with the above display adapter.

Operation System: Windows 95/98/me/2000/xp.

Installing Hardware

Installing LA-5000 Series parallel port based Logic Analyzer

Please follow these instructions for installing the LA-5000 Series Parallel port based Logic Analyzers.

- 1) Locate an available parallel port.
- 2) Connect the included DB-25 cable to parallel port.
- 3) Connect the other end of the DB-25 cable to the LA-5000 series Logic Analyzers. (with a DB-25 mini gender changer)
- 4) Plug the power supply into the an AC outlet.
- 5) Plug the power supply into the LA-5000 series Logic Analyzers.
Note: for LA-5240, LA-5280, LA-5540, LA-5580 use power supply **5V/5A** (Adapter)
for LA-55160 use power supply **5V/10A** (Adapter)
- 6) Connect the pods and wires to the Logic Analyzer. See Installing Pods and Connecting wires.
- 7) Make sure the parallel printer port is set to bi-directional mode. This is done in the bios configuration program of your computer
- 8) After checking all connections, turn on the computer and peripherals. You are now ready to install the software.

Installing LA-5000 Series, LA-2124A with USB 2.0 Adapter

Please follow these instructions for installing the LA-5000 Series, LA-2124A Logic Analyzer With USB 2.0 adapter.

- 1) Turn off the computer and all peripherals connected. Remove the computer power cord from the wall outlet. Locate an available USB interface (USB 2.0 adapter cover USB 1.1 version).
Connect the include USB 2.0 Adapter to the LA5000 Series, LA-2124A parallel port.
- 2) Connect the included USB cable to USB interface.
- 3) Connect the other end of the USB cable to the USB 2.0 adapter.
- 4) Plug the Logic Analyzer power supply into the an AC outlet.
- 5) Plug the Logic Analyzer power supply into the Logic Analyzer.
- 6) Connect the pods to the Logic Analyzer.
- 7) After checking all connections, turn on the computer and peripherals. You are now ready to install the software.

**Note: when LA-2124A connected with USB 2.0 Adapter,
No external power source require.**

Installing Software

- 1) Insert the distribution CD into drive E: ("E" is CD driver)
- 2) Run Windows.
- 3) Select File menu.
- 4) Select Run option.
- 5) Enter file to run [E:\la5000b\setup.exe](#) (here E: is CD location)
or [E:\la2124a\setup.exe](#) for la2124a.
- 6) Follow the on screen instructions.

Guide To Operation

Hardware

When making measurements with the Logic Analyzer, meaningful data can only be captured with some prior knowledge of the characteristics of the circuit under test. Before initiating any capture cycles, the Logic Analyzer must be configured using the control program. See the software section later in the manual for instructions on these procedures. To connect the Logic Analyzer to the test circuit, a series of mini-clips on the Logic Analyzer Pod for the Logic input channels. The Logic Analyzer Pod has inputs for 40 -160 channels, CH24 – 39 channel is the external clock input. or it has independently external clock for LA-2124A. At times, it may also be necessary to connect the test circuit to the computer system itself. This will eliminate more noise in the test application due to ground level differentials. This is especially true when dealing with high speed timing analysis. Use a heavy gauge wire to make a connection between the test circuit ground and the case of the computer.

Logic Analyzer Pod Markings

LA-5240-32k

LA-5540-256k

These analyzers have 1 row (Labeled "Board 1") of connectors for 5 pods. The connectors are labeled 1A, 2A, 3A, 4A and 5A. Connect Pod 1(Ch 0..7), Pod 2(Ch 8..15), Pod 3(Ch 16..23), Pod 4(Ch 24..31), and pod 5(Ch 32..39) to those connectors.

LA-5280-32k

LA-5580-256k

These analyzers have 2 rows (Labeled "Board 1" and "Board 2") of connectors for 10 pods. "Board 2" is for channels 40..79
The connectors are labeled 1B, 2B, 3B, 4B and 5B. Connect Pod 1(Ch 0..7), Pod 2(Ch 8..15), Pod 3(Ch 16..23), Pod 4(Ch 24..31), and pod 5(Ch 32..39) to those connectors. "Board 1" is for channels 0..39
The connectors are labeled 1A, 2A, 3A, 4A and 5A. Connect Pod 1(Ch 0..7), Pod 2(Ch 8..15), Pod 3(Ch 16..23), Pod 4(Ch 24..31), and pod 5(Ch 32..39) to those connectors.

LA-55160-256k

This analyzer has 4 rows (Labeled "Board 1", "Board 2", "Board 3" and "Board 4") of connectors for 20 pods. "Board 4" is for channels 120..159
The connectors are labeled 1D, 2D, 3D, 4D and 5D. Connect Pod 1(Ch 0..7), Pod 2(Ch 8..15), Pod 3(Ch 16..23), Pod 4(Ch 24..31), and pod 5(Ch 32..39) to those connectors. "Board 3" is for channels 80..119
The connectors are labeled 1C, 2C, 3C, 4C and 5C. Connect Pod 1(Ch 0..7), Pod 2(Ch 8..15), Pod 3(Ch 16..23), Pod 4(Ch 24..31), and pod 5(Ch 32..39) to those connectors. "Board 2" is for channels 40..79
The connectors are labeled 1B, 2B, 3B, 4B and 5B. Connect Pod 1(Ch 0..7), Pod 2(Ch 8..15), Pod 3(Ch 16..23), Pod 4(Ch 24..31), and pod 5(Ch 32..39) to those connectors.

"Board 1" is for channels 0..39

The connectors are labeled 1A, 2A, 3A, 4A and 5A. Connect Pod 1(Ch 0..7), Pod 2(Ch 8..15), Pod 3(Ch 16..23), Pod 4(Ch 24..31), and pod 5(Ch 32..39) to those connectors.

Connecting wires to Logic Analyzer

LA-5240-32K

LA-5540-256K

LA-5280-32K

LA-5580-256K

LA-55160-256K

Each pod has 8 channels and 3 ground connections. Each of the grounds is tied together. push wires onto the posts. Make sure that the wire is actually on the post it is possible to jam the wire between the post and the plastic case and not make a connection.

The BNC on the back on the Logic Analyzer is a trigger out signal. This pin goes low when you hit Go and then goes to logic High when the instrument triggers.

LA-2124A-128K

The LA-2124A-128K has 40 pins. They are organized as follows:

Top row:

00..15	Channels 0..15
CLK	External clock input

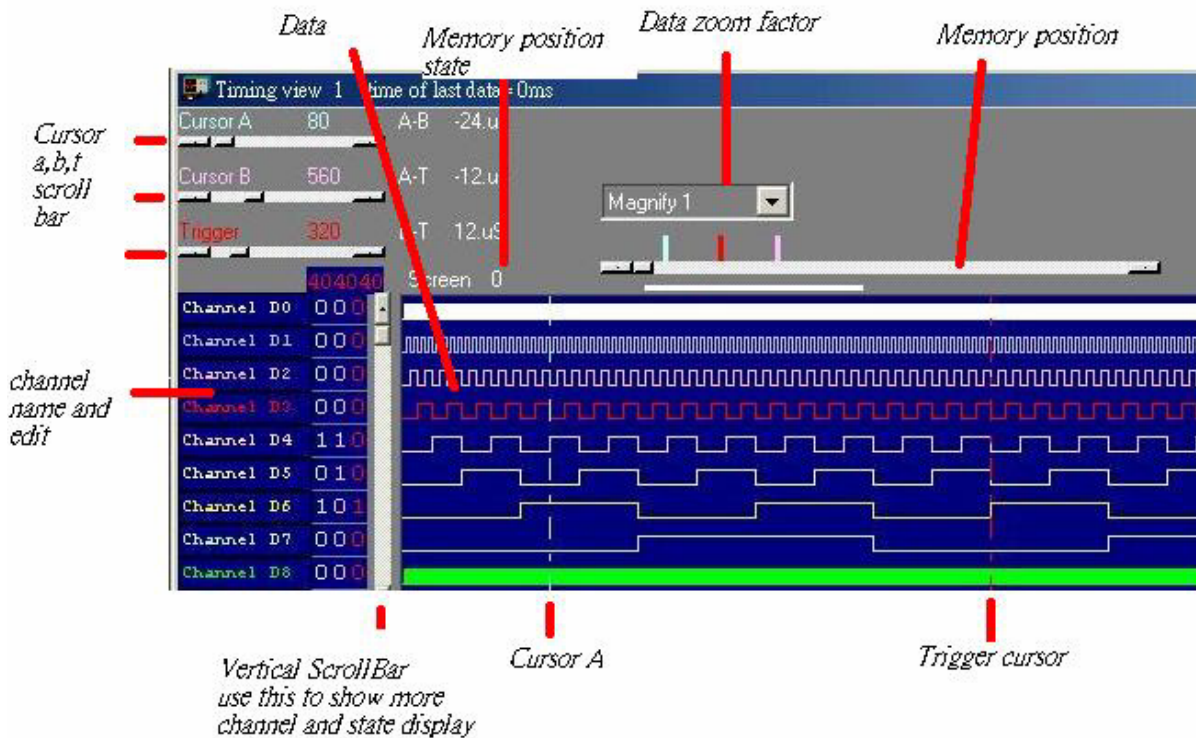
External trigger out. This pin goes low when you hit Go and then goes to logic High when the instrument triggers Ground connection.

Bottom row:

16..23	Channels 16..23
NC	Not connected
GND	Ground connection

The wires and the clips that come with the pods are modular. The pods, wires, and clips can all be disconnected from each other by gently pulling them apart. Removing just the clips, but leaving the wires connected to the pods allows connections to be made to wires and posts of the test circuit of up to 0.64 mm (0.025 in).

Do not insert wires or posts greater than this diameter as that will expend the contacts in the wire beyond the allowed limit, possibly damaging the connector.



Multi-window

Software open more timing if system free memory have a lot. So use 256 mega or 512 mega memory will be better.

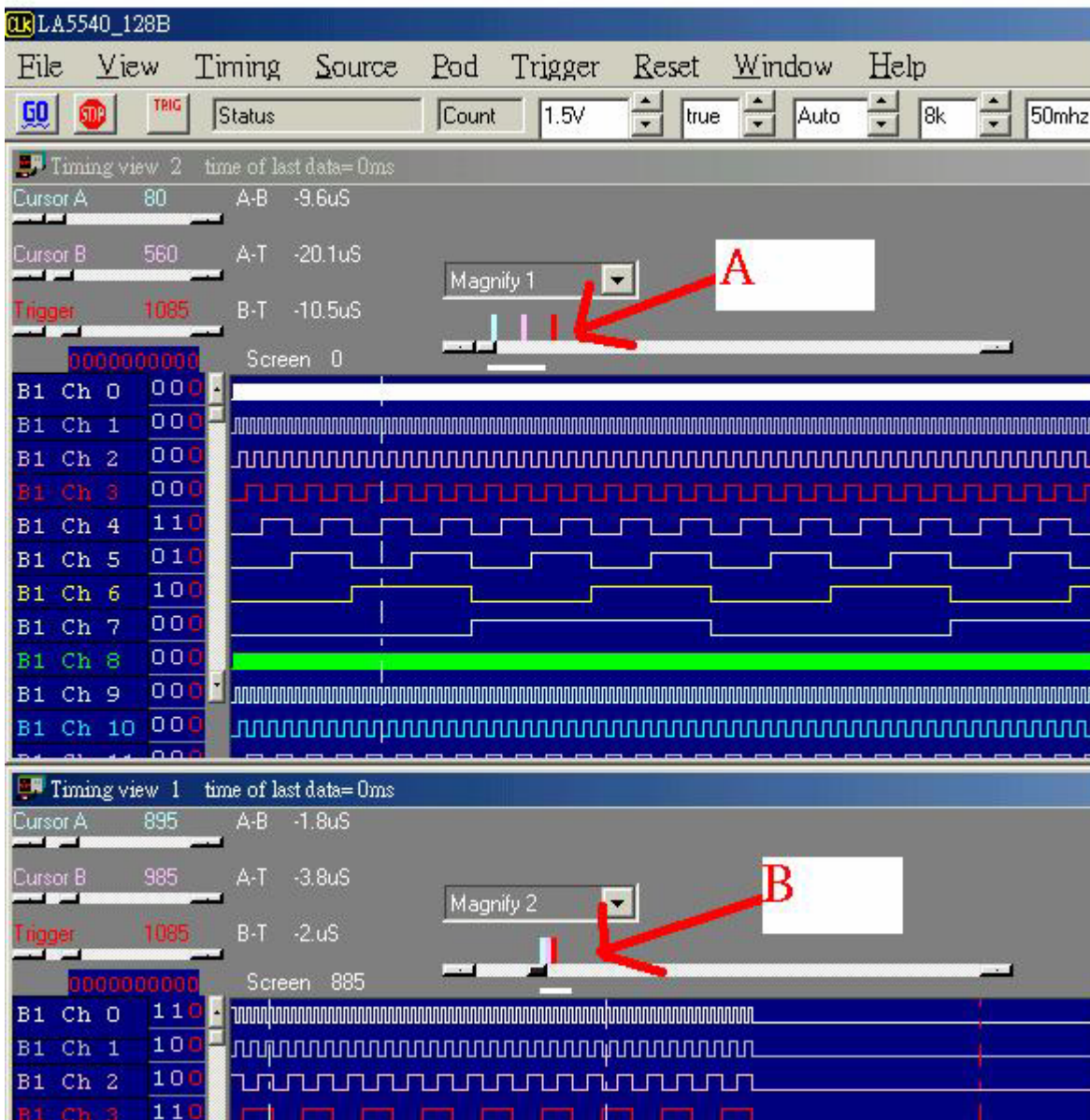
Data1-10 to timing by point User point which timing memory should be placed for captured data, it can let user captured 2 or 10 set different data to buffer and display, the sequence pointed by user, this function let user have 128k*10 or 256k*10 memory size.

Data1-10 to timing by auto The same is true for it, it automatically capture 2 or 10 sets data to buffer, the sequence is 10,9,8,7,6,5,4,3,2 then 1.

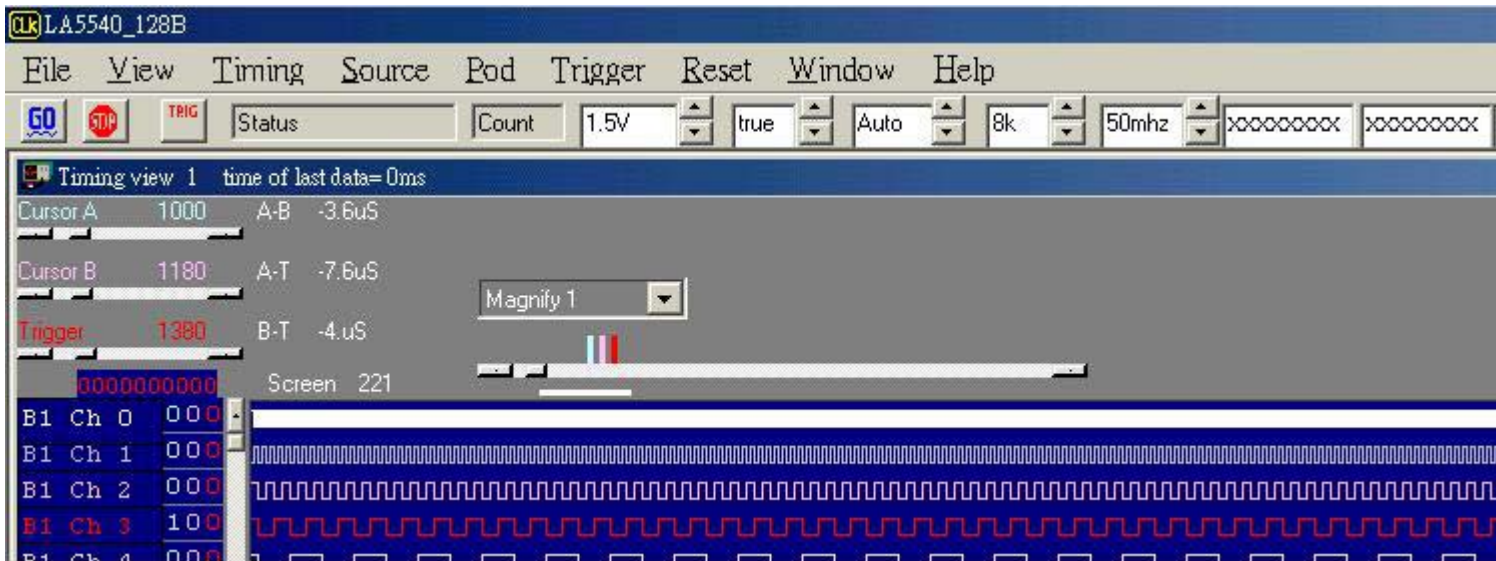
Timing1-10<-data Activate timing display. we suggest user use more than 1 monitor to get better show.

This software is a revolution software, it have a lot of new function, even tradition famous oscilloscope have not these powerful function.

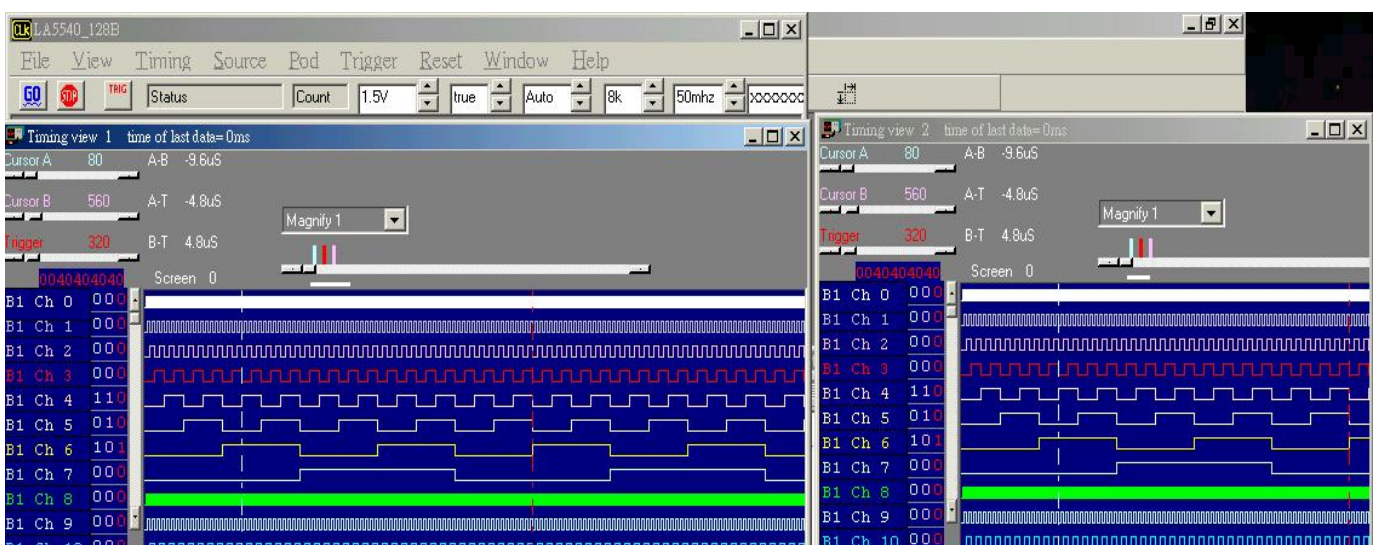
this software show a lot of timing, let user easy to compare and analyzer timing, tradition software no matter it is stand alone or computer base oscilloscope only show one timing, these one timing software only analyzer one segment of buffer, unlike this software it can look buffer in beginning and buffer in middle and buffer in end at the same time. The following picture part A show it is locate at beginning and part B at middle of buffer at the same time, every individual timing also support their own cursor, voltage measurement, zoom factor .. etc.



Another new function are let memory expand to 10 times by software, LA-2124A, LA5000 now is 128K, 256K size, this software can let it look have 1.28 mega, 2.56 mega size when user open 10 timing and set 10 timing by auto function. (it need 512 mega system memory or more). the method is software continue capture data to these 10 timing, every timing have 256k individual buffer, so user can look almost 2.56 mega memory. it better than any famous oscilloscope in the world. The third big function are it can show long timing when you have two monitor, the following show two monitor long timing, it can let user easy analyze timing, so stand alone oscilloscope can not do it, because they only have one monitor.



The fourth function is it can support two different timing at different monitor. the follow picture is left monitor show square waveform and right monitor show another waveform. it easy compare last capture data and current data at different monitor. these function even famous oscilloscope have not support it.



Trigger Mode (Trigger Menu)

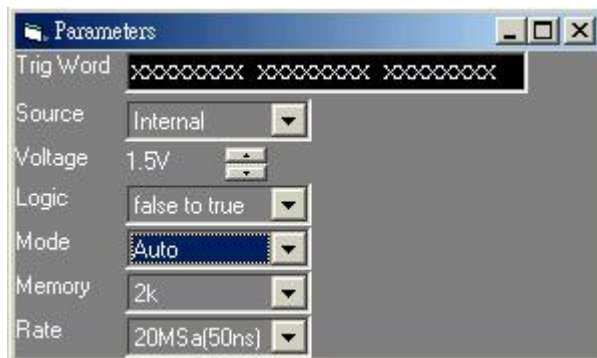
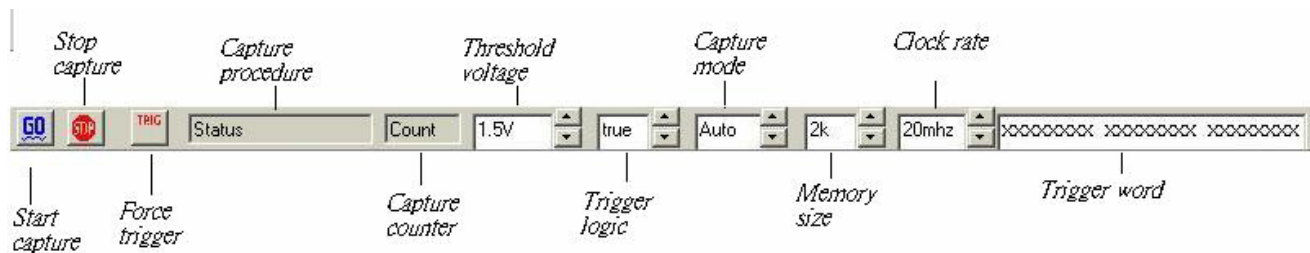
Set trigger acquisition mode.

- Single The LA looks for the trigger event. When it is found acquire a single buffer worth of data and stop.
- Normal The LA looks for the trigger event. When it is found acquire a buffer worth of data, re-arm and repeat until stop is hit.
- Auto Similar to Normal except that it will acquire regardless of the trigger event.

Trigger mode setup (trigger menu)

trigger word setup (LA-2124A)

A trigger word is the pattern that the Logic Analyzers needs to see before it will start to acquire data. The trigger word is made of a series of "1", "0" and "x" (don't care) bits. It can set at toolbar or parameter form.



Ch23..16

Edit pattern for channels 23 to 16

Ch15..8

Edit pattern for channels 15 to 8

Ch7..0

Edit pattern for channels 7 to 0

Logic

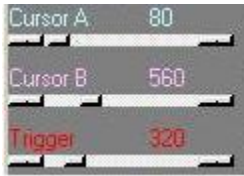
Trigger if condition is true or false.

How to set trigger word (LA-2124A)

- 1) You can edit all 24 channels at a time.
- 2) Edit the pattern: The LSB is to the right. Each bit can be set to "X", "1" or "0" (Don't care, true, false)
- 3) You can set the trigger logic to "True" (trigger when pattern matches) or "False" (trigger when pattern stops matching)

Trigger position (LA-2124A)

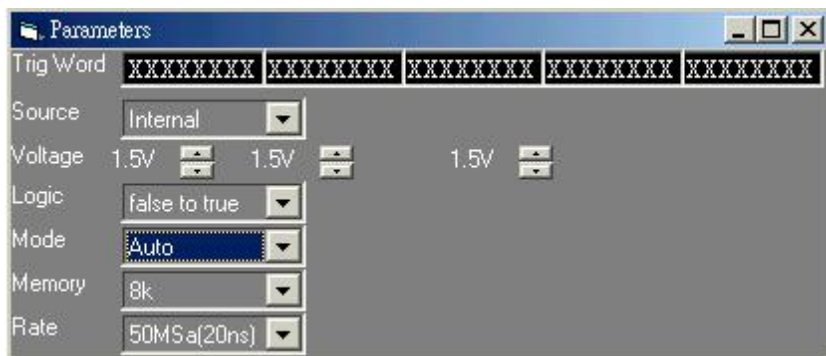
The trigger position defines how much data is captured prior to the trigger event and how much data is stored after it. You set the Trigger position by moving the [trigger cursor](#). This feature allows you to see the data that led up to the trigger as well as what happened after the trigger.

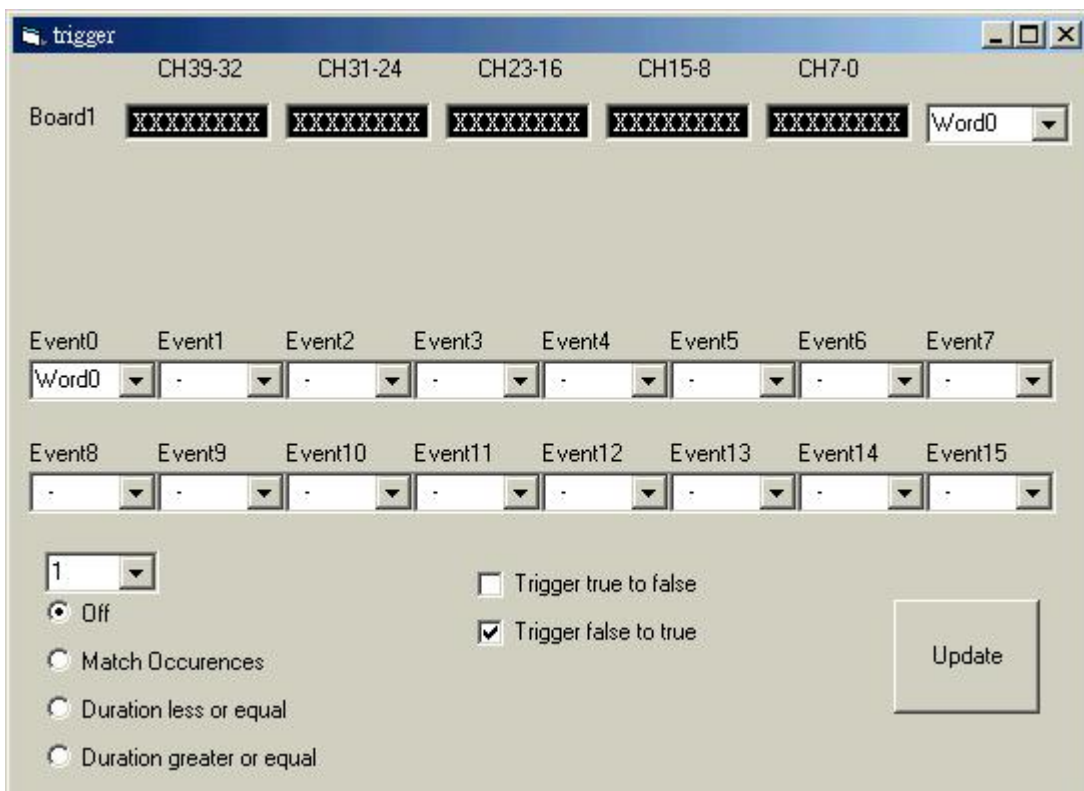


trigger word setup (LA-5000 Series)

A sequence of up to 16 trigger words can be set. A trigger word is the pattern that the Logic Analyzers needs to see before it will start to acquire data. The trigger word is made of a series of "1", "0" and "x" (don't care) bits.

It can set trigger word at toolbar or parameter form or trigger form.





- Channels Select which channel range to edit.
- Pod 5..1 Edit pattern for each pod
- Condition Select which word you want to edit.
- Logic Trigger if condition is true or false.
- Edit base Select which base you want to edit in.
- Sequence Select which word you want to use for each of the 16 levels.
- Count The number of times you want to see the last word in the sequence before you trigger.

How to set trigger word (LA-5000 Series)

- 1) The trigger words are edited here:
- 2) You can edit 40 -160 channels at a time. If your set trigger word at trigger form.
 Edit the pattern: The LSB is to the right. Each bit can be set to "X", "1" or "0" (Don't care, true, false)
- 3) The LA-5000 series Logic Analyzers have 16 level sequential triggering.
- 4) That means that can specify up to 16 conditions and the Logic Analyzer won't trigger until all of the conditions have been met in the order specified.
 Note: You don't need to use all 16 of the levels and patterns can be repeated. Use the list boxes to select which condition from the library of trigger patterns you want in each trigger level. Any level set to "-" will be skipped.
 Note: A pattern can be repeated in the sequence.

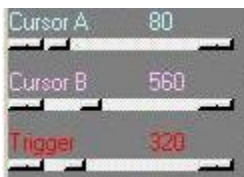
The last word in the sequence has some extra features:

You can look for that pattern "Count" number of times.

- 5) You can set the trigger logic to "True" (trigger when pattern matches) or "False" (trigger when pattern stops matching)

Trigger position (LA-5000 Series)

The trigger position defines how much data is captured prior to the trigger event and how much data is stored after it. You set the Trigger position by moving the [trigger cursor](#). This feature allows you to see the data that led up to the trigger as well as what happened after the trigger.



Trigger menu

- Go Start looking for trigger event.
- Stop Stop looking for trigger event.
- End End capture and display data captured up to this point independent of trigger status.

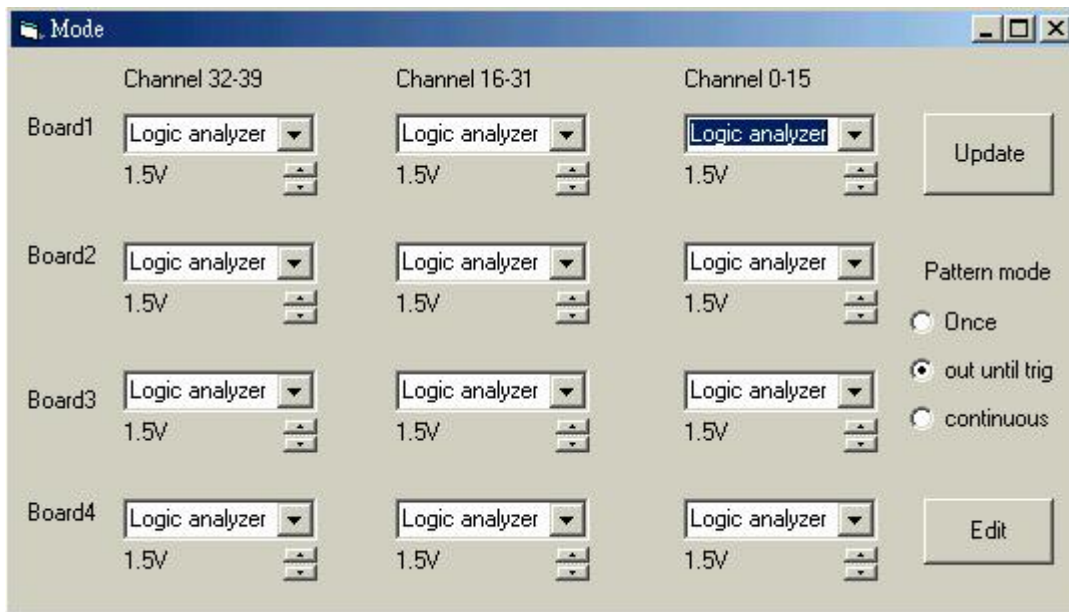
[Trigger word](#) Define trigger event.

Threshold level Set threshold level.

[Mode](#) Set trigger mode.

Threshold Voltage Setup

it can set threshold voltage at toolbar or parameter form.
LA-5000 have mode form to set all 40 --160 channels.



Set the threshold voltage for one or more pods. Multiple threshold voltages can be set. Each pod represents 8 channels.

Clock Menu

Select an internal clock rate or an external clock for sampling.

Clock menu for LA-2124A

It can set clock rate at toolbar or parameter form.

100 MHz (10 ns)	Sample on Internal clock.
50 MHz (20 ns)	Sample on Internal clock.
20 MHz (50 ns)	Sample on Internal clock.
10 MHz (100 ns)	Sample on Internal clock.
5 MHz (200 ns)	Sample on Internal clock.
2 MHz (500 ns)	Sample on Internal clock.
1 MHz (1 us)	Sample on Internal clock.
500 KHz (2 us)	Sample on Internal clock.
200 KHz (5 us)	Sample on Internal clock.
100 KHz (10 us)	Sample on Internal clock.
50 KHz (20 us)	Sample on Internal clock.
20 KHz (50 us)	Sample on Internal clock.
10 KHz (100 us)	Sample on Internal clock.
5 KHz (200 us)	Sample on Internal clock.

Note: The software only transfers data to the PC when the buffer is full. If you are using a slow clock it might take a long time to fill the buffer.

Recording time/Acquisition time/Capture time/Buffer Length

The Logic analyzer will acquire data for time equal to Buffer length * clock rate.

Example:

If buffer length = 128K and sample rate = 100KHz. The LA will record for 1.32 seconds (128K * 10 us).

Clock menu for la-5540-256k, la-5580-256k and la-55160-256k

It can set clock rate at toolbar or parameter form.

500 MHz (2 ns)	Pod 1*,3*,5* is at 500MHz, Pod 2*, 4* are off	
250 MHz (4 ns)		All Pods active.
100 MHz (10 ns)		All Pods active.
50 MHz (20 ns)		All Pods active.
20 MHz (50 ns)		All Pods active.
10 MHz (100 us)		All Pods active.
5 MHz (200 us)		All Pods active.
2 MHz (500 us)		All Pods active.
1 MHz (1 us)		All Pods active.
500 KHz (2 us)		All Pods active.
200 KHz (5 us)		All Pods active.
100 KHz (10 us)		All Pods active.
50 KHz (20 us)		All Pods active.
20 KHz (50 us)		All Pods active.
10 KHz (100 us)		All Pods active.
5 KHz (200 us)		All Pods active.
2 KHz (500 us)		All Pods active.
1 KHz (1 ms)		All Pods active.
500 Hz (2 ms)		All Pods active.
200 Hz (5 ms)		All Pods active.
100 Hz (10 ms)		All Pods active.
50 Hz (20 ms)		All Pods active.
20 Hz (50 ms)		All Pods active.
10 Hz (100 ms)		All Pods active.
5 Hz (200 ms)		All Pods active.
2 Hz (500 ms)		All Pods active.
1 Hz (1 s)		All Pods active.

Pattern Generator functions are not available at 250MHz and 500MHz modes.

Note: The software only transfers data to the PC when the buffer is full. If you are using a slow clock it might take a long time to fill the buffer.

Recording time/Acquisition time/Capture time/Buffer Length

The Logic analyzer will acquire data for time equal to Buffer length * clock rate.

Example

If buffer length = 8K and sample rate = 1KHz. The LA will record for 8.096 seconds (8K * 1ms).

External clock (LA-2124A)

External clock setup. The LA has up to 1 external clock input. This input can be set to rising or falling. The LA will acquire 1 sample every time it sees a clock.

Note 1: The LA only transfers data to the PC after the data buffer is full. Slow external clocks might take a very long time to fill the buffer.

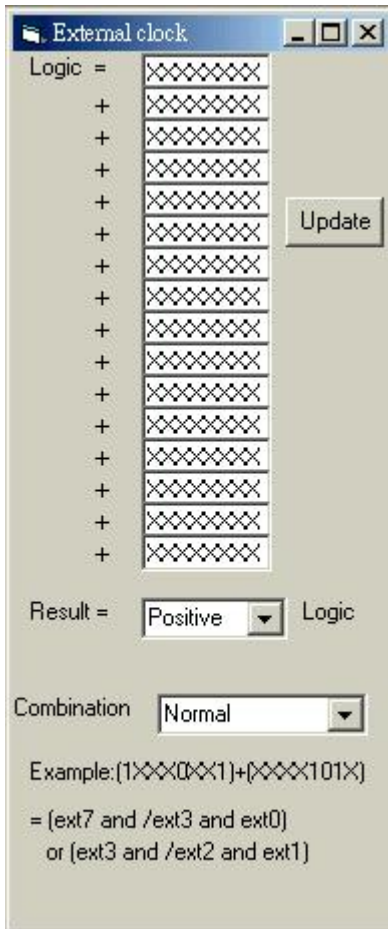
Note 2: Make sure that your external clock has enough pulses to fill the buffer or the instrument will never transfer data.

External clock (LA-5000 Series)

External clock setup. The LA has up to 8 external clock inputs. These inputs can be combined to create very complex clocking. Pod 5A is used for the external clock.

Note:

The LA only transfers data to the PC after it has received a full buffer worth of data. If your clock is very slow it might take a long time to fill the buffer. Please make sure your clock happens enough times to fill the buffer.



1..16 16 sets of 8 bit patterns that are OR's together to form a complex clock.
 Each bit can be set to 0, 1 or X.
 Logic Clock on the rising or falling edge.

Modes::

Normal External clock

Latched 100MHz Clock on external + 100MHz internal to avoid too narrow waveform to make circuit crazy.

Rising and falling Clock on the rising and the falling edge of the external clock.

Logic:

Logic rising Clock on the external rising edge.

Logic falling Clock on the external falling edge.

How to use:



- 1) Each word represents the 8 external clocks xxxxxxxx Each bit can be set to 0(low), 1(high) or X (don't care).
- 2) The 16 words are OR's together to form a complex clock.
- 3) Set clock mode:

Normal Sample on the external clock.
 Internal + external Mix of internal + external clock.
 Rising and falling Clock on the rising or the falling edge of the external clock.

- 4) Set Logic to rising or falling.

Examples:

Example 1: Pattern 1 = xxx1xxx0 and all other patterns are xxxxxxxx

Result: Sample when line 4 is HIGH and line 0 is LOW.

Example 2: Pattern 1 = xxx1xxx0, Pattern 2 = xxxx xx11 and all other patterns are xxxxxxxx

Result: Sample when line 4 is HIGH and line 0 is LOW or when Lines 1 and 0 are HIGH.

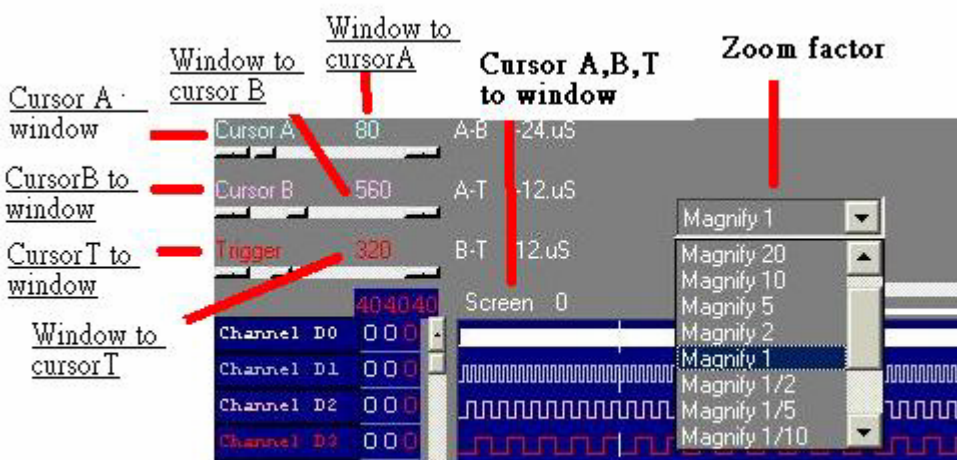
Magnify (timing)

Select a zoom ratio for the timing window. You can display the timing data in a compressed or expanded format. Zooming in lets you see great detail. Zooming out lets you see large abundant of data.

Zoom can be changed in the following ways:

- 1) Right clicking on the combo brings up a magnify factor list.

Zoom Combo



In the timing window you can do the following:

Zoom

Zoom in or out by selecting zoom factor combo.

Window to cursor A:	Zoom around cursor A
Window to cursor B:	Zoom around cursor B
Window to cursor T:	Zoom around cursor T (trigger cursor)
cursor A to Window:	shift cursor A to window
cursor B to Window:	shift cursor B to window
cursor T to Window:	shift cursor T to window
cursor A, B, T to Window:	shift cursor A, B, T to window

Timing window

This window shows the data in a timing waveform style display. The channel names will be on the left edge with the data going horizontally. To the right of the channel names are the values of data at each cursor (it is color coded to match the cursors). The vertical scrollbar moves the window up and down to display more channels. The horizontal scrollbar moves the data forward and backward in time.

The channel order can be changed by the color form.

The size of the window can be changed by grabbing an edge of the window and dragging it.

When the Timing window is selected (title says "active window")

Left and right arrows scroll data with respect to time,
or grabbing timing to shift data.

Up and down arrows scroll data with respect to channels.

Window to cursor A:	Zoom around cursor A
Window to cursor B:	Zoom around cursor B
Window to cursor T:	Zoom around cursor T (trigger cursor)
cursor A to Window:	shift cursor A to window
cursor B to Window:	shift cursor B to window
cursor T to Window:	shift cursor T to window
cursor A, B, T to Window:	shift cursor A, B, T to window

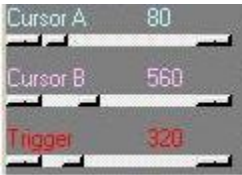
Note:

This only works on the selected window.

Click on the window to select it.

Cursor using

Cursors are used to mark points of interest in the data, to measure time between events and to define pre/post trigger position.

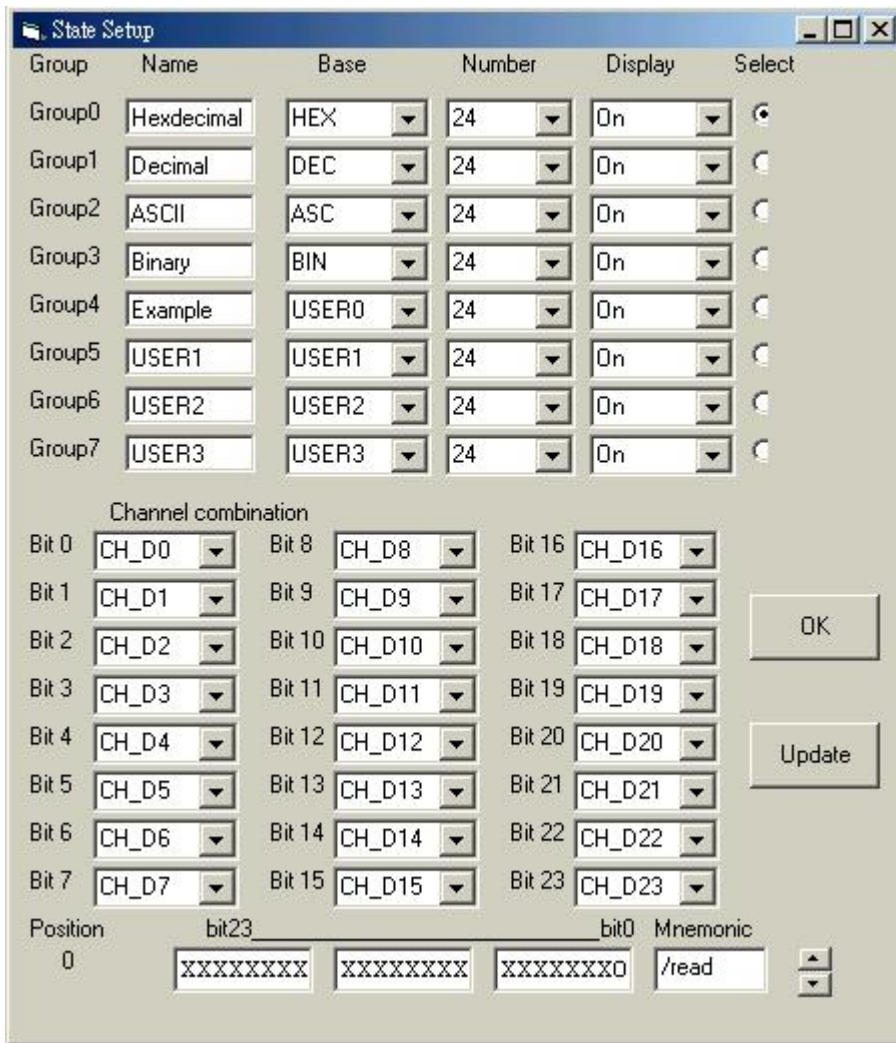


Moving a cursor:

- 1) In the timing you can select a cursor by using the arrow buttons in the timing move it.
- 2) You can also "grab" the cursor by left clicking on it in the timing and then move it by
- 3) "dragging" it to a new location.
- 4) The timing cursor A, B, T have selections that allow you to bring the cursors onto their views.

Setting Up The State Window





Setting up the state display.

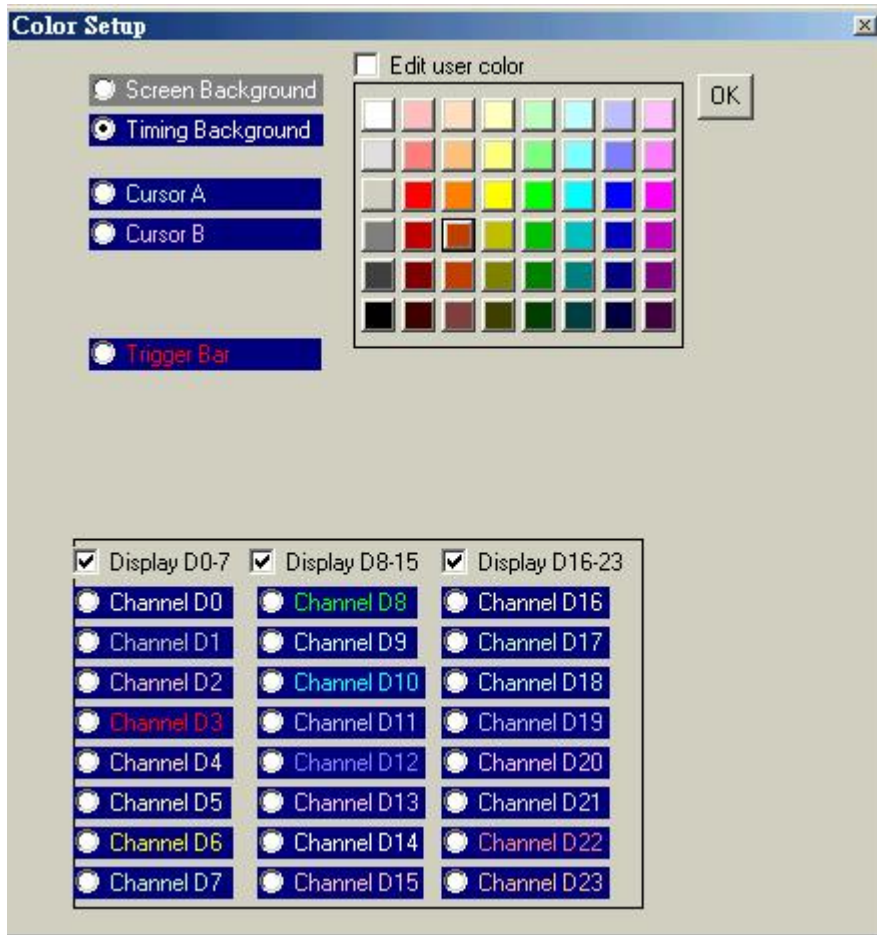
- 1) Set group
- 2) Select which group to display. Groups can be in different bases.
- 3) Set Base.
- 4) Set channel combination.

Setting channel names and colors

Channel names can edit at timing window directly.

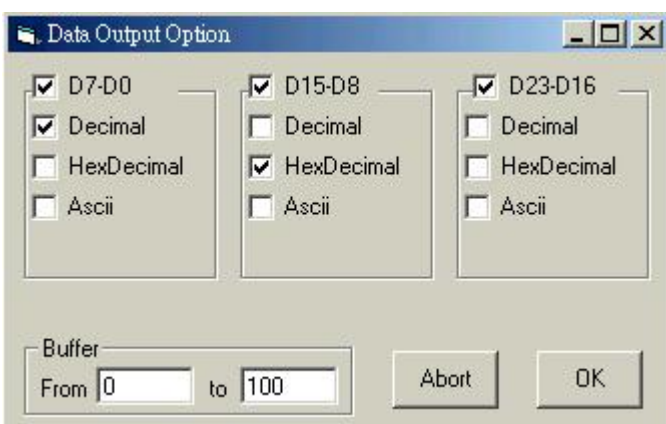
Channel names should be edited at color form.

Color form also can set all cursor color.



Export (File Menu)

Use this to output data to other programs.



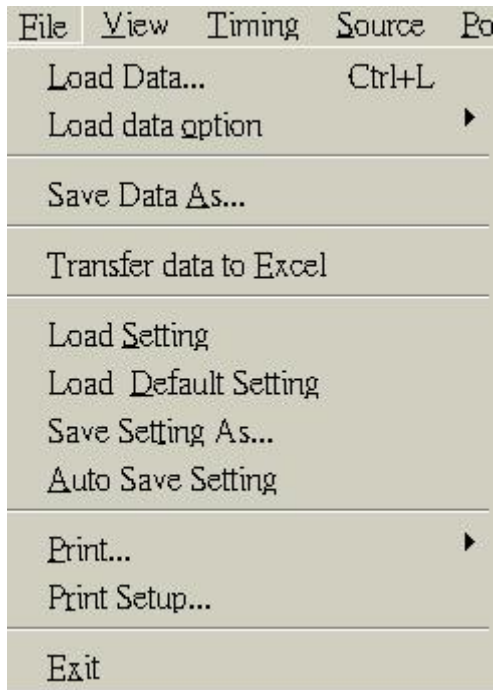
How to use:

- 1) Data:
 - Select which data to output: Individual [group](#) or all channels
 - Select base to output data in.
- 2) Start and End:

Select data address range.

3) Click OK to save data.

File menu commands



The File menu offers the following commands:

Load : Opens an existing file (data or settings).

Save : Saves a file to a specified file name. Saves settings or data files.

Export: Export data to excell programs.

Auto save setting : If checked settings will be saved when you exit the program.
then loaded when you load the program.

Print: Prints data in Timing format.

Print Setup: Selects a print mode, printer and printer connection.

Exit: Exit.

Pod Menu

(Not available on LA-2124A)

Pod Mode setup: Select to configure the pods and to edit the pattern generator data and options.

Edit : Select this to edit pattern generator data.

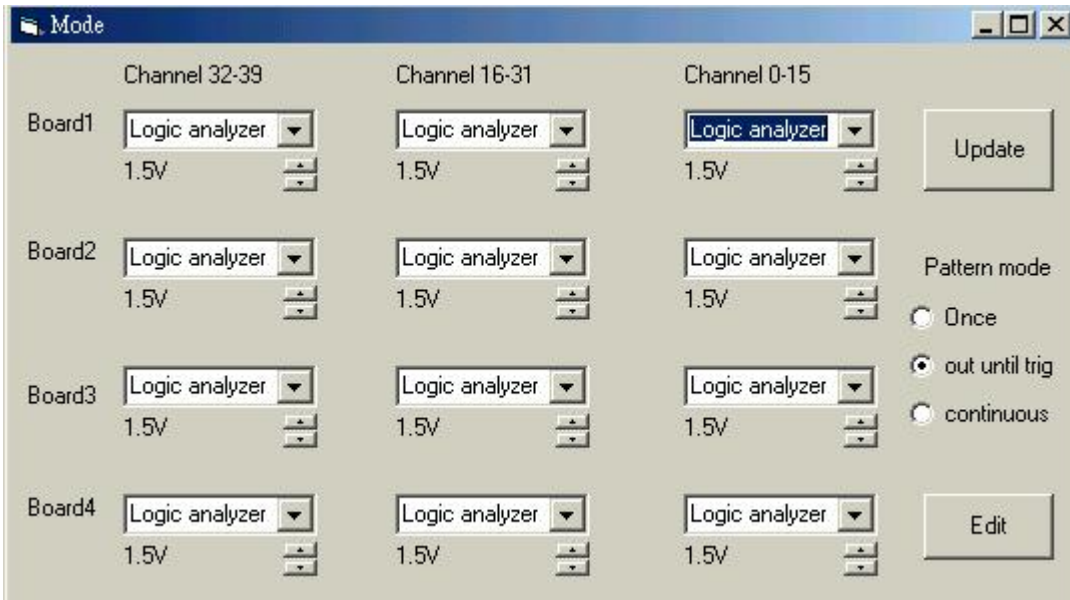
Threshold voltage: Set threshold voltage. Signals above the threshold voltage is evaluated as a "1" and signals below are "0".

The Logic Analyzer can be converted into a combination Logic Analyzer/Pattern Generator or

to a Pattern Generator only. This is done by buying Pattern Generator pods, installing them instead of the Logic pods and then configuring the software.

Three different modes can be set

- Logic Install Logic pods and acquire data.
- Pattern Generator Install Pattern Generator pods and output data.



Pattern mode:

- Once Output pattern once. Data is acquired simultaneously on Logic pods.
- Out until trig Output until trigger condition met. Data is acquired simultaneously on Logic pods.
- Continuous Continuously output until stop hit. Data is not acquired simultaneously on Logic pods.

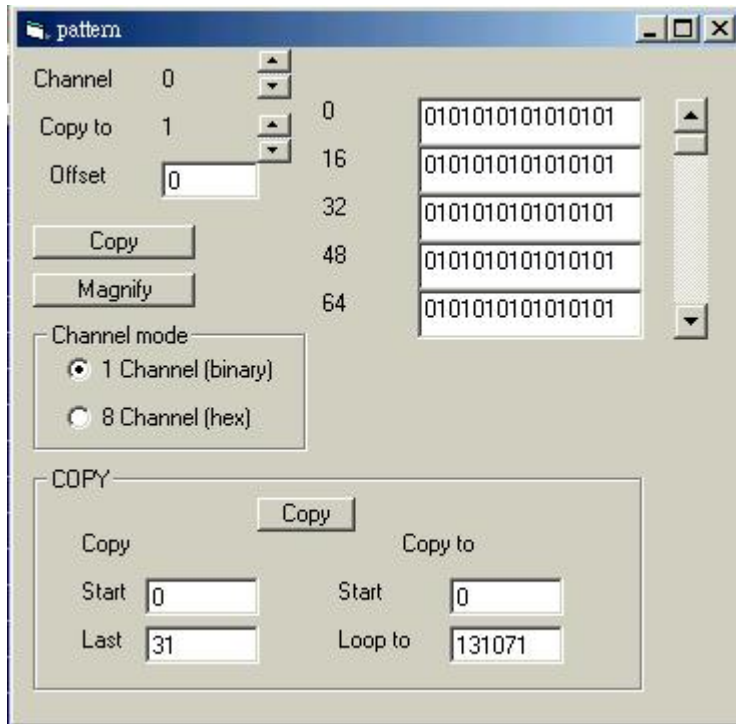
How to:

- 1) Install pattern pods and select the matching configuration on the table above.
 Note: Pods 1 and 2 must be both either Pattern Generator or Logic Analyzer.
 Pods 3 and 4 must also be the same type.
- 2) Select pattern output mode.

Pattern editor

(Not available on LA-2124A)

Patterns can be edited and defined in this window. You can also get data for the pattern data by capturing it from logic channels and copying it to the pattern channels. Pattern data can also come from data files created by this software or files that you create yourself.



Channel

Select which channel (s) to edit.

Channel copy

Used to copy entire channels.

Channel mode

Select 1 channel edit or 8 channel edit.

Magnify

Each time the key is hit the data is expanded by a factor of two. For example 0101100 becomes 00110011110000

Copy

Select "copy from" range, "copy to start" and "loop to". Then hit the 'copy' key.

Example 1:

Copy from start = 20

Copy from end = 30

Copy to start = 50

Loop to = 131071

When you click on the copy key the 131071-50 data points from position 20 to and including position 30 in the data buffer will be copied to position 50.

Accessories

Pattern generator pods (Not available for the LA-2124A)

Pattern generator pods can be purchased to convert the LA-5000 Series into a pattern generator. the mini DB-25 gender changer connect to LA-5000 Series, it is parallel port based Logic Analyzers.

USB 2.0 adapter

An optional USB adapter is available for the LA-5000 series, LA-2124A Logic Analyzers. It allows you to run the Analyzer from the USB port of your computer instead of the ISA

Hardware / Software Specifications

Note: From the date of September 2002 we do not supply the ISA bus for LA-5000 Series Logic Analyzer.

Software (LA-5000 series)

Operating systems supported.

WIN 95/98/ME : Yes.

WIN 2000/XP/Vista : **Yes. (connect USB 2.0 Adapter only)**

Software (LA-2124A)

Operating systems supported

WIN 95/98/ME: Yes.

WIN 2000/XP: **Yes. (connect USB 2.0 Adapter only).**

Memory Modes And Channel Specs

Memory mode

Select memory mode: Available Channels

LA-2124A-128K

Max speed channels (memory size)

up to 50MHz external 24 (24 @ 128K each) All channels available

up to 100MHz internal 24 (24 @ 128K each) All channels available

(up to 160MHz internal 24 (24 @ 128K each) All channels available when purchase after August 2005)

LA-5240-32K

Max speed channels (memory size)

up to 50MHz external 40 (40 @32K each) All channels available

up to 100MHz internal 40 (40 @32K each) All channels available

100MHz 40 (40 @100MHZ @32K)

200MHz 24 (24 @200MHZ @64K) Pods 1a, 2a are at 200MHz, Pods 3a, 4a are off.

Pods 5a are at 100MHz.

LA-5540-256K

Max speed channels (memory size).

up to 80MHz external 40 (40 @128K each) All channels available.

up to 250MHz internal 40 (40 @256K each) All channels available.

500MHz 24 (24 @500MHZ @512K) Pods 1a, 3a, 5a are at 500MHz, Pods 2a, 4a are off.

LA-5280-32K

Max speed channels (memory size)

up to 50MHz external 80 (80 @32K each) All channels available.

up to 100MHz internal 80 (80 @32K each) All channels available.

100MHz 80 (80 @100MHz @32K).

200MHz 48 (48 @200MHz @32K) Pods 1a, 2a & 1b, 2b, are at 200MHz.

Pods 3a, 4a & 3b, 4b are off. Pods 5a & 5b are at 100MHz.

LA-5580-256K

Max speed channels (memory size)

up to 80MHz external 80 (80 @ 128K each) All channels available

up to 250MHz internal 80 (80 @ 256K each) All channels available

500MHz 48 (48 @500MHZ @512K) Pods 1a, 3a, 5a & 1b, 3b, 5b are at 500MHz,

Pods 2a, 4a & 2b, 4b are off.

LA-55160-256K

Max speed channels (memory size)

up to 80MHz external 160 (160 @ 128K each) All channels available

up to 250MHz internal 160 (160 @ 256K each) All channels available

500MHz 96 (96 @500MHZ @512K) Pods 1a, 3a, 5a 1b, 3b, 5b, 1c, 3c, 5c & 1d, 3d, 5d are at 500MHz, Pods 2a, 4a, 2b, 4b, 2c, 4c, & 2d, 4d are off.

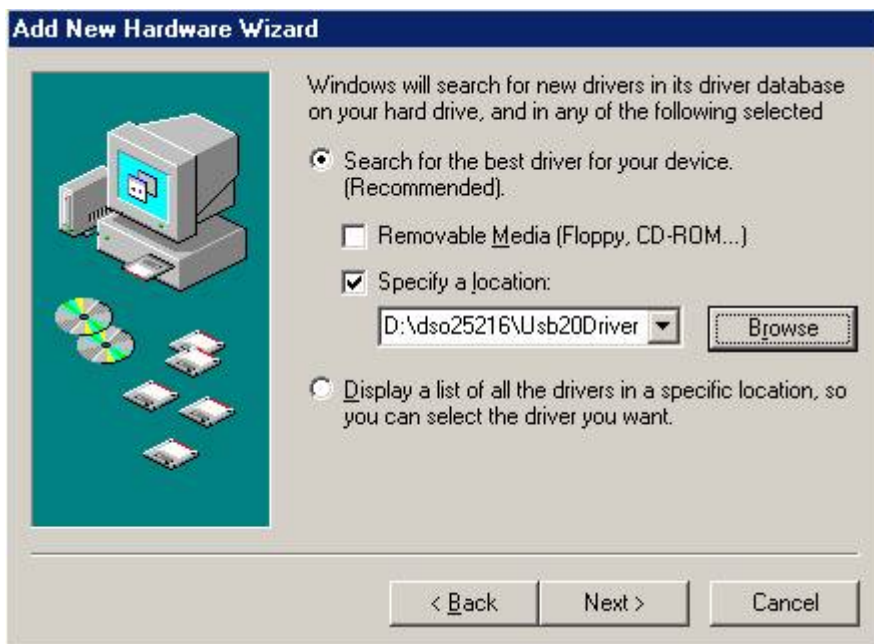
Window USB Driver Install

Windows 98/ME USB driver install

When USB2.0 control interface be connected to computer, screen will display



Click Next to continue



Edit or browse path to ...\\USB20driver\\win98_ME\\gene.inf
(here D: is CD location, dso25216A may be dso29xx or la5000b or la2124a)
Click Next to continue



Click Next to continue



Completing install

Windows 2000 USB driver install

When USB2.0 control interface be connected to computer, screen will display



Click Next to continue



Click Next to continue



Click Next to continue



Edit or browse path to ...USB20driver\win2000_XP\gene.inf
(here F: is CD location, dso25216A may be dso29xx or la5000b or la2124a)
Press OK

Upgrade Device Driver Wizard

Driver Files Search Results

The wizard has finished searching for driver files for your hardware device.



The wizard found a driver for the following device:



USB2.0 Device

Windows found a driver that is a closer match for this device than your current driver. To install the driver Windows found, click Next.



f:\dso25216\usb20driver\win2000_xp\gene.inf

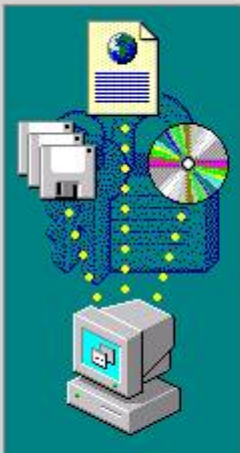
< Back

Next >

Cancel

Click Next to continue

Digital Signature Not Found



The Microsoft digital signature affirms that software has been tested with Windows and that the software has not been altered since it was tested.

The software you are about to install does not contain a Microsoft digital signature. Therefore, there is no guarantee that this software works correctly with Windows.

Usb2.0 Controller 5

If you want to search for Microsoft digitally signed software, visit the Windows Update Web site at <http://windowsupdate.microsoft.com> to see if one is available.

Do you want to continue the installation?

Yes

No

More Info

Click Yes to continue



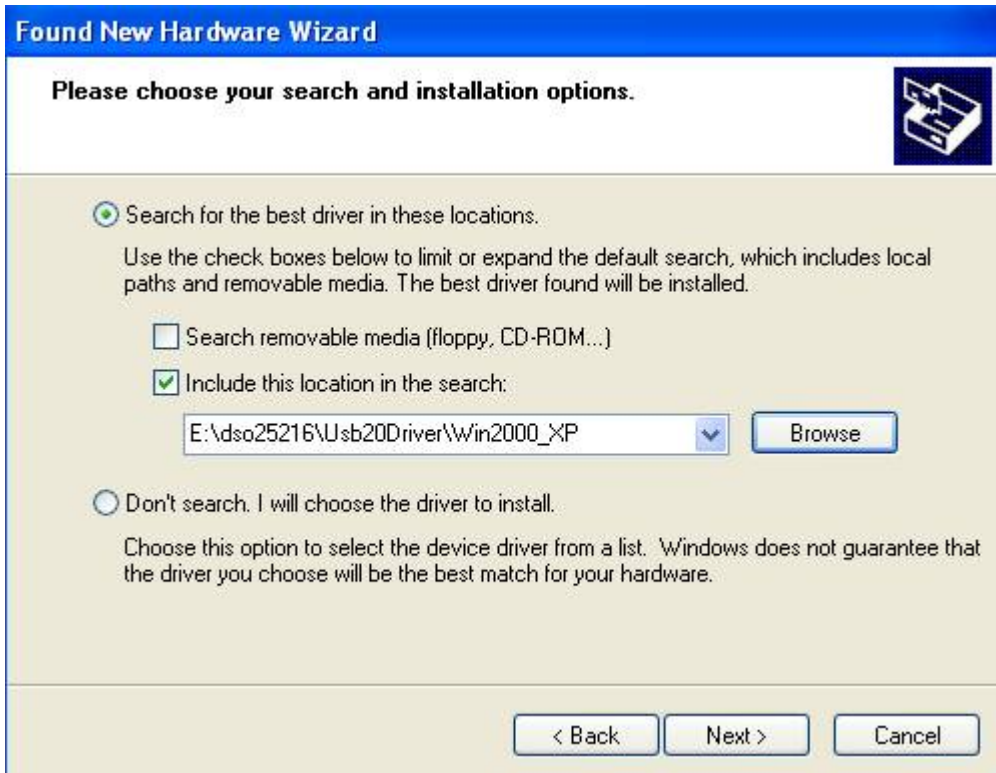
Completing install

Windows XP USB driver install

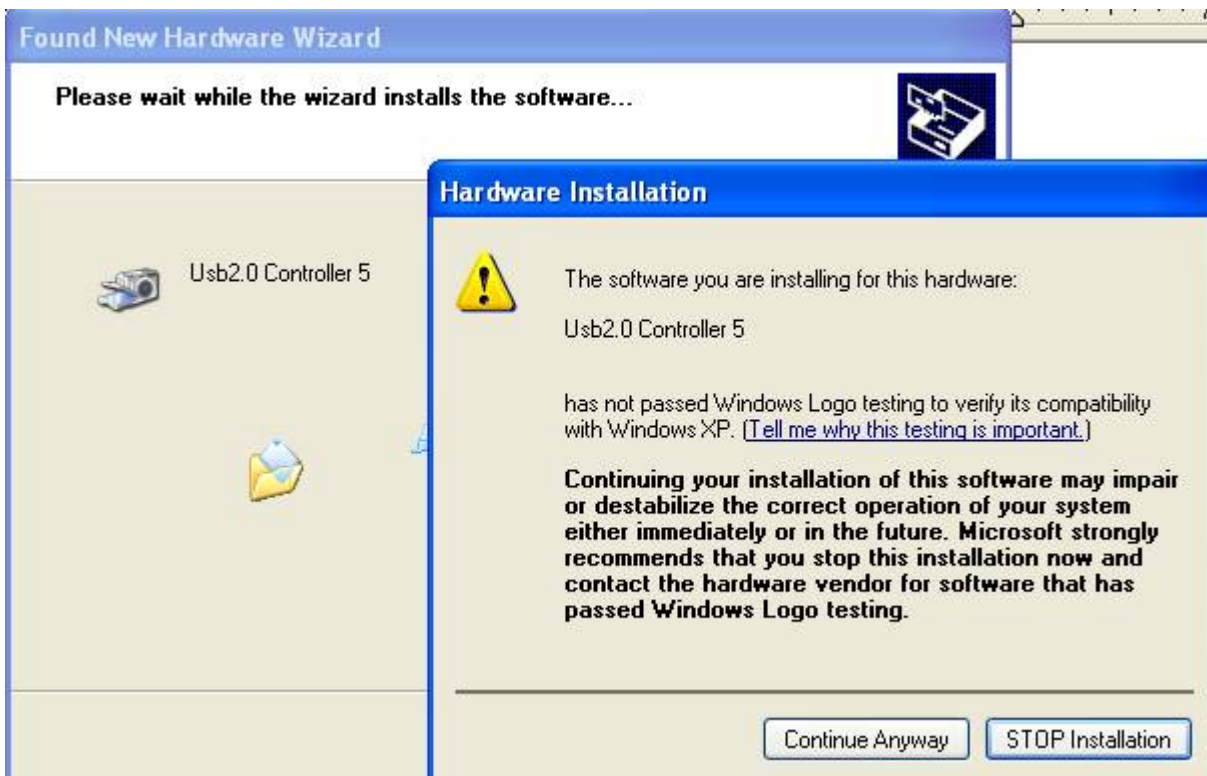
When USB2.0 control interface be connected to computer, screen will display



Click Next to continue



Edit or browse path to ...\USB20driver\win2000_XP\gene.inf
(here E: is CD location, dso25216A may be dso29xx or la5000b or la2124a)
Click Next to continue



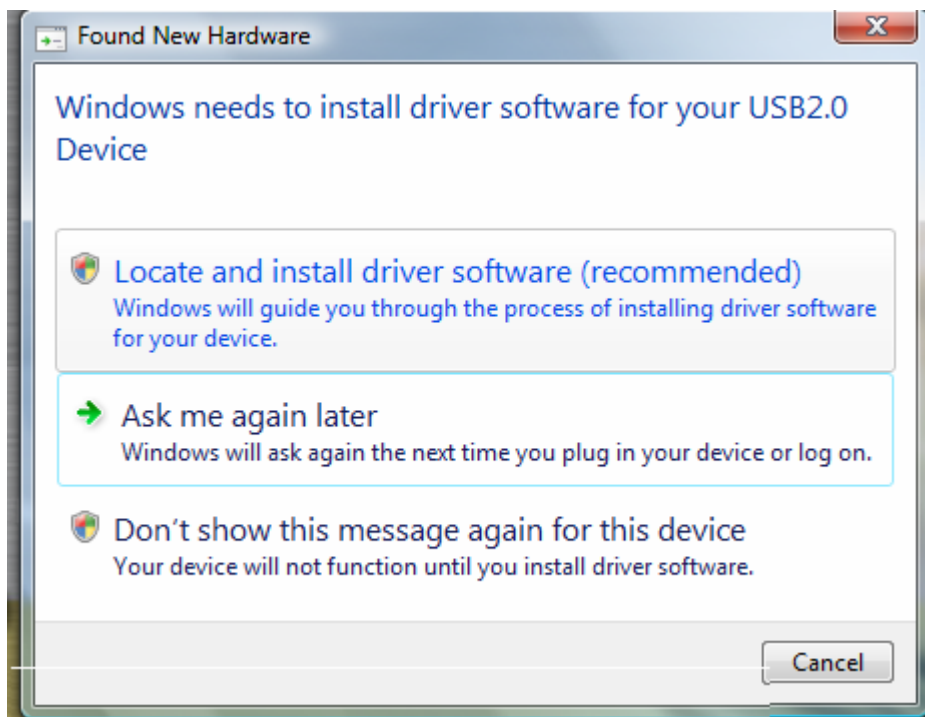
Press Continue Anyway



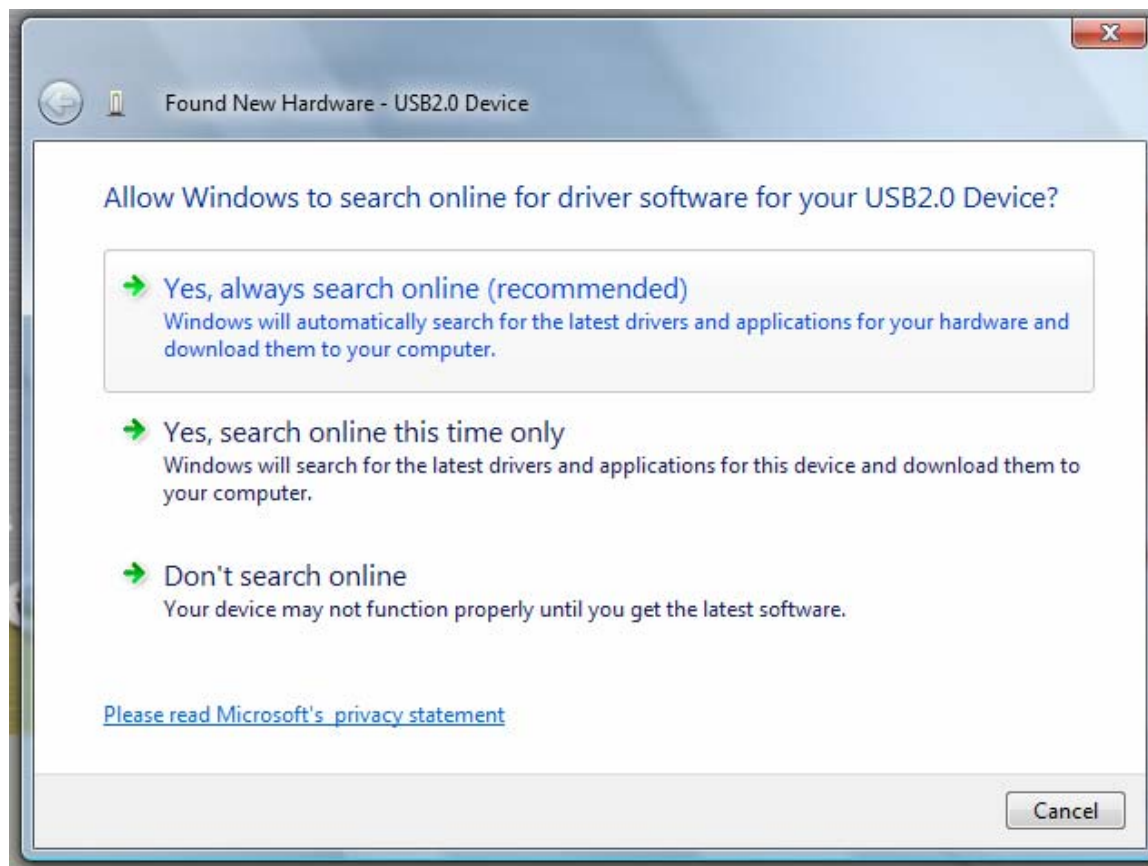
Completing install

Windows Vista USB driver install

When USB2.0 control interface be connected to computer, screen will display as following:



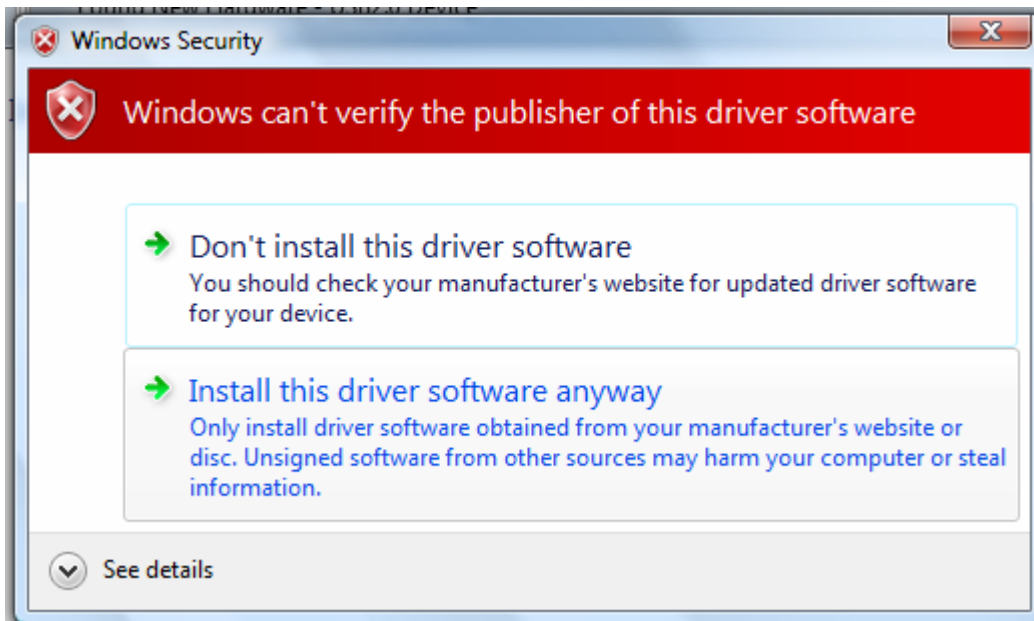
Press **Locate and install driver software (recommended)** Continue Anyway



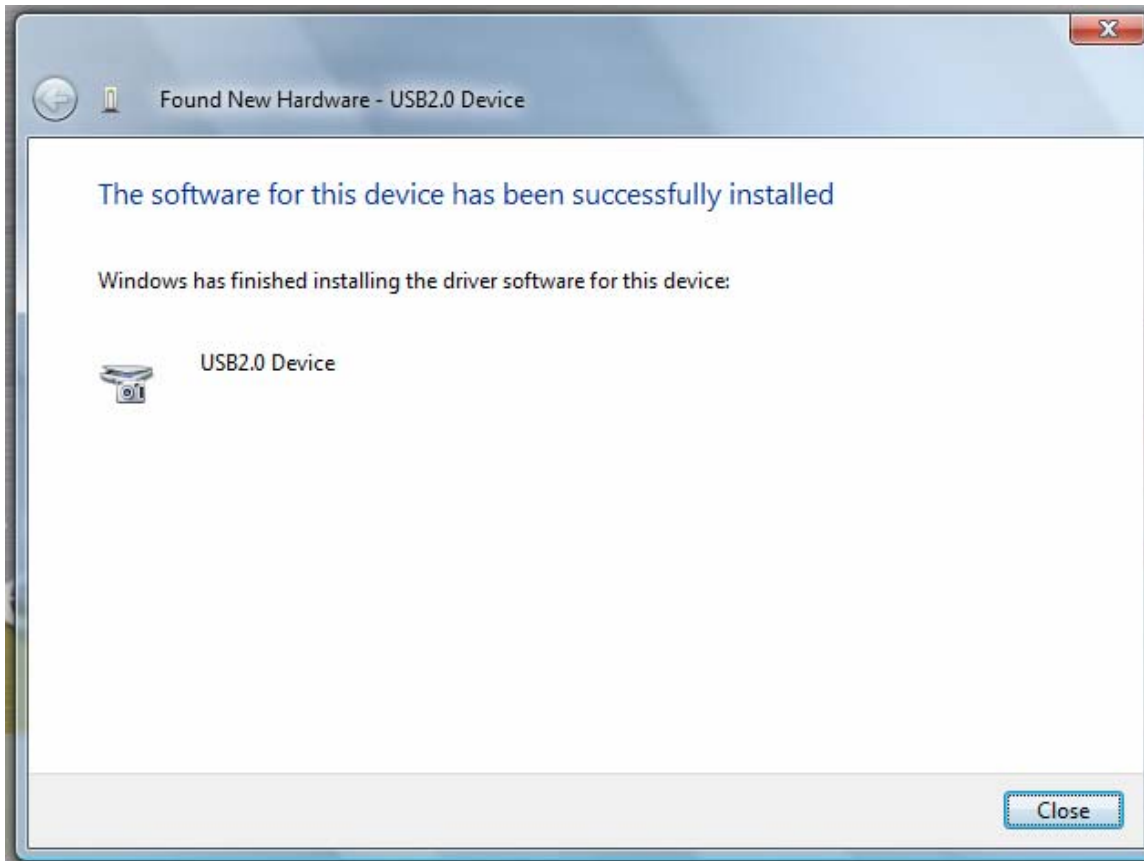
Press Continue Anyway



Press **Insert the disc that came with your USB2.0 Device**
Click Next to continue



Press **Install this driver software anyway** to Continue



Completing install

Certificate For LA-5000 Series and LA-2124A Introduction

Introduction

calibration equipment used:

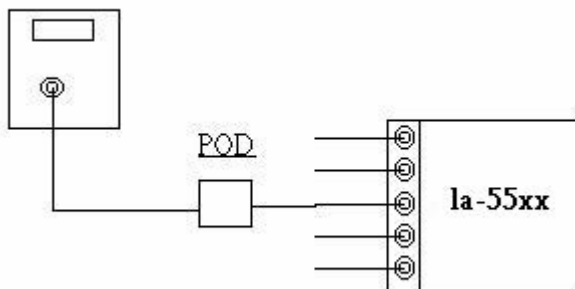
HP 33120A Serial No: US36034172

Clock Computer Corp. LA-55160 Pattern Generator

HP 8648A Signal Generator Serial No: 3625U00521

Threshold voltage calibration

signal generator



Let signal generator output a square wave from -5v to 5v.

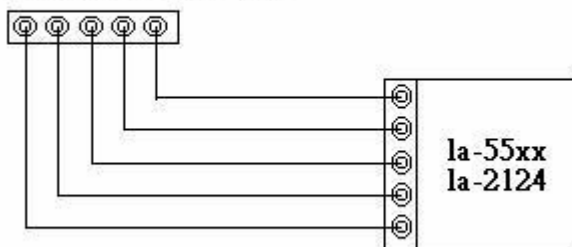
Set threshold from -4.8 to 4.8v, it should get square waveform.

Set threshold to 5.2v, it should get low signal.

Set threshold to -4.8v, it should get high signal.

Trigger word and position calibration

la-55160 pattern generator



LA-55xx use software let trigger position always lock in 100% accuracy position, even you zoom in the waveform, still lock in 100 % accuracy position.

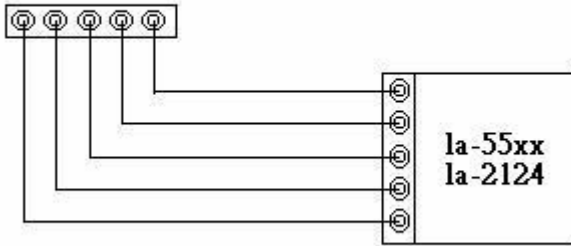
Use LA-55160 arbitrary pattern generator to output some specific word like 01010101 00001111 10001101 11111111 00000000... etc.

then set trigger word. it should get trigger word at proper position.

it should test more than ten sets trigger word.

Trigger sequential calibration

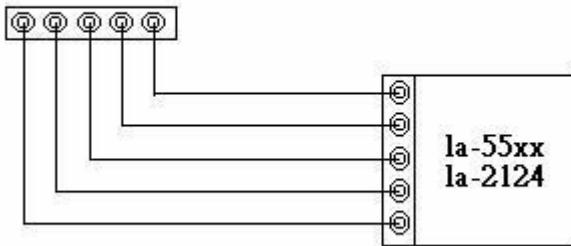
la-55160 pattern generator



Use LA-55160 arbitrary pattern generator to output some specific word like 01010101 00001111 10001101 11111111 00000000... etc. then set trigger word from 1 to 15 sequential. it should get trigger word at proper position. it should test more than ten sets trigger word.

Clock source calibration

la-55160 pattern generator



It has two clock source, one is internal clock, another is external clock. Use LA-55160 arbitrary pattern generator to output some 1/2 1/4 ... etc pattern . the LA-55160 output sample rate is 1 to 100 MHz, for 1/2 pattern, it can get 1/2 Hz to 50 MHz square wave form. then set logic analyzer internal clock to proper sample rate to get data, measure the data frequency should be 1/2 to 50mh. the same is true for external clock.

Characteristic Of LA-5000 Series and LA-2124A

LA-5000 Series:

Model	LA-55160	Remark
External Clock	8 Channels 0 - 80 MHz	From Channel D32~39
Frequency	500 MHz 96Ch 1Hz~250MHz160Ch	160Ch
Memory	512 K/96 Ch 256 K/160 Ch	
Channel	160 Channels	Logic Pod
Trigger Level	16 Levels 160 Ch Complex	
Trigger Qualify	8 Channels	
Pattern Generator	0 ~ 50 MHz (0 ~ 100 MHz Rate)	Optional to order
Threshold Voltage	12 Sets -6.4v ~ +6.4v	
Input Bandwidth	100 MHz	
Input Impedance	200 Kohm \leq 5pF	
Max. Input Voltage	\pm 150 V	
Power Supply	DC Adapter 5V/10A	Universal Input
PC Interface	Parallel port / USB 1.1 / 2.0	EPP / BPP
Net Weight	4.0 Kgs	
Size (Dimension)	210mm x 215mm x 95mm	Aluminum Case
Accessories	Logic pod, USB 2.0 Adapter, User's Manual, Software driver, Color wires + clips, Parallel cable (IEEE1284), DC Adapter 5V/10A.	

Model	LA-5580	LA-5540	Remark
External Clock	8 Channels 0 - 80 MHz		From Channel D32~39
Frequency	500 MHz 48Ch 1 Hz~250MHz 80Ch	500 MHz 24Ch 1 Hz~250MHz 40Ch	80Ch /40Ch
Memory	512 K/48 Ch 256 K/80 Ch	512 K/24 Ch 256 K/40 Ch	
Channel	80 Channels	40 Channels	Logic Pod
Trigger Level	16 Levels 80 Ch Complex	16 Levels 40 Ch Complex	
Trigger Qualify	8 Channels		
Pattern Generator	0 ~ 50 MHz (0 ~ 100 MHz Rate)		Optional to order
Threshold Voltage	6 Sets -6.4v ~ +6.4v	3 Sets -6.4v ~ +6.4v	
Input Bandwidth	100 MHz		
Input Impedance	200 Kohm \leq 5pF		
Max. Input Voltage	\pm 150 V		
Power Supply	DC Adapter 5V/5A	DC Adapter 5V/2.5A	Universal Input
PC Interface	Parallel port / USB 1.1 / 2.0		EPP / BPP
Net Weight	2.5 Kgs	1.8 Kgs	
Size (Dimension)	210mm x 215mm x 70mm		Aluminum Case
Accessories	Logic pod, USB 2.0 Adapter, User's Manual, Software driver, Color wires + clips, Parallel cable (IEEE1284), DC Adapter 5V/2.5A (5A).		

Model	LA-5280	LA-5240	Remark
External Clock	8 Channels 0 - 80 MHz		From Channel D32~39
Frequency	200MHz+100MHz/32Ch+16Ch 100MHz/80Ch	200MHz+100MHz/32Ch+16Ch 100MHz/80Ch	80Ch / 40Ch
Memory	64 K / 32 Ch+ 16 Ch 32 K / 80 Ch	64 K / 16 Ch+ 8 Ch 32 K / 40 Ch	
Channel	80 Channels	40 Channels	Logic Pod
Trigger Level	16 Levels 80 Ch Complex	16 Levels 40 Ch Complex	
Trigger Qualify	8 Channels		
Pattern Generator	0 ~ 50 MHz (0 ~ 100 MHz Rate)		Optional to order
Threshold Voltage	6 Sets -6.4v ~ +6.4v	3 Sets -6.4v ~ +6.4v	
Input Bandwidth	100 MHz		
Input Impedance	200 Kohm \leq 5pF		
Max. Input Voltage	\pm 150 V		
Power Supply	DC Adapter 5 V/5A	DC Adapter 5 V/2.5A	Universal Input
PC Interface	Parallel port / USB 1.1 / 2.0		EPP / BPP
Net Weight	2.5 Kgs	1.8 Kgs	
Size (Dimension)	210mm x 215mm x7 0mm		Aluminum Case
Accessories	Logic pod, USB 2.0 Adapter, User's Manual, Software driver, Color wires + clips, Parallel cable (IEEE1284), DC Adapter 5V/2.5A (5A).		

LA-2124A:

Model	LA-2124A	Remark
External clock	1 Channels 0 - 80 MHz	From Channel "CLK"
Frequency ***	12.5 KHz ~ 160 MHz ***	24 Ch
Memory	128 K	24 Ch
Channel	24 Channels	
Trigger Level	1 Levels 24 Channels "0", "1", "X"	
Threshold Voltage	-1v ~ +3v	
Input Bandwidth	30 MHz	
Input Impedance	50 Kohm \leq 5pF	
Max. input voltage	-5 ~ +10 V	
Power Supply	No external power source require	Power Supply by USB
PC Interface	USB 1.1 / 2.0	
Net Weight	120 Grams	
Size (Dimension)	150mm x 70mm x 25mm	
Accessories	Color wires + clips, USB 2.0 Adapter + cable User's Manual, CD driver	

***** LA-2124A Frequency up to 160MHz when purchase order after August 2005**

Technical Support

Technical Support can be reached at



CLOCK COMPUTER CORP.

克拉克電腦股份有限公司

7F., No: 5. Lane 236, Section 5.

Roosevelt Road. Taipei, 116. Taiwan.

Phone: 886-2-29321685. 29340273. 29335954.

Fax: 886-2-29331687.

Email: ufclockc@ms9.hinet.net

Software Updates

Software can be downloaded from our website

<http://www.clock-link.com.tw>

Software ©copyright



CLOCK COMPUTER CORP.

7/F., No: 5. Lane 236, Section 5.

Roosevelt Road. Taipei, 116. Taiwan.

All Right Reserved

Phone: 886-2-29321685. 29340273. 29335954.

Fax: 886-2-29331687.

E-mail: ufclockc@ms9.hinet.net