

Megapixel Indoor Fixed IP Camera User's Manual



Version 2.1

Welcome

Thank you for purchasing our IP camera!

This user's manual is designed to be a reference tool for your system.

Please read the following safeguard and warnings carefully before you use this series product!

Please keep this user's manual well for future reference!

Important Safeguards and Warnings

1 . Electrical safety

All installation and operation here should conform to your local electrical safety codes.

The power shall conform to the requirement in the SELV (Safety Extra Low Voltage) and the Limited power source is rated 12V DC or 24V AC in the IEC60950-1.

Before you replace the SD card, please unplug the power cable and then remove the shell

We assume no liability or responsibility for all the fires or electrical shock caused by improper handling or installation.

We are not liable for any problems caused by unauthorized modification or attempted repair.

2 . Installation

Do not apply power to the IP camera before completing installation.

Do not put object on the IP camera.

3 . Environment

This series IP camera should be installed in a cool, dry place away from direct sunlight, inflammable, explosive substances and etc.

The working temperature ranges from -10°C to +60°C. Please keep it away from the electromagnetic radiation object and environment.

Please keep the sound ventilation.

Do not allow the water and other liquid falling into the IPC.

4. Daily Maintenance

Current series IPC has no power button. Please unplug all corresponding power cables before your installation.

Do not touch the CCD or CMOS part; you can use the blower to clean the dust on the surface of the lens. You can use the dry cloth with some alcohol to clear if necessary.

Please keep the dustproof cap back to protect the CCD or CMOS part if the IP camera does not work for a long time.

If there is too much dust on the housing, please use the water to dilute the mild detergent first and then use it to clean the device with the clear dry cloth. Finally use the dry cloth to clean the device.

5. Accessories

Please open the accessory bag to check the items one by one in accordance with the list below.

Contact your local retailer ASAP if something is missing or damaged in the bag.

Accessory Name		Amount
IPC Unit	■	1
C/CS adapter	■	1
Quick Start Guide	■	1

CD	■	1
----	---	---

Table of Contents

1	General Introduction	7
1.1	Overview	7
1.2	Feature	7
1.3	Specifications	8
1.3.1	Performance	8
1.3.2	Factory Default Setup	10
2	Framework	14
2.1	Rear Panel	14
2.2	Side Panel	18
2.3	Lens	19
2.4	Bidirectional talk	19
2.4.1	Device-end to PC-end	19
2.4.2	PC-end to the Device-end	20
2.5	Alarm Setup	20
3	Installation	22
3.1	Lens Installation	22
3.1.1	Auto Aperture Lens	22
3.1.2	Manual Lens	22
3.1.3	Remove Lens	23
3.2	SD Card	23
3.2.1	Installation	23
3.2.2	Remove	24
3.3	3G Card	25
3.3.1	Installation	25
3.3.2	Remove	25
3.4	3G/WIFI Antenna	26
3.4.1	Installation	26
3.4.2	Remove	27

3.5	I/O Port.....	28
4	Quick Configuration Tool.....	29
4.1	Overview.....	29
4.2	Operation.....	29
5	Web Operation.....	32
5.1	Network Connection.....	32
5.2	Login and Main Interface.....	32
6	FAQ.....	35
	Appendix Toxic or Hazardous Materials or Elements.....	36

1 General Introduction

1.1 Overview

This series IP camera integrates the traditional camera and network video technology. It adopts audio video data collection, transmission, storage together. It can connect to the network directly without any auxiliary device.

This series IPC uses standard H.264 video compression technology and PCM, G.711a/u audio compression technology, which maximally guarantees the audio and video quality.

This series IPC has mega pixel resolution and supports 12V DC/24V AC power. It supports the wireless network application, bidirectional talk, digital water mark and etc.

It can be used alone or used in a network area. When it is used lonely, you can connect it to the network and then use a network client-end. Due to its high definition, multiple functions and various applications, this series IPC is widely used in many indoor environments and other important area surveillance.

1.2 Feature

User Management	<ul style="list-style-type: none">● Different user rights for each group, one user belongs to one group.● The user right can not exceed the group right.
Data Transmission	<ul style="list-style-type: none">● Support cable network data transmission via Ethernet
Storage Function	<ul style="list-style-type: none">● Support central server backup function in accordance with your configuration and setup in alarm or schedule setting● Support record via Web and the recorded file are storage in the client-end PC.● Support local SD card hot swap. Support short-time storage when encounter network offline. Please note SD card can only memorize the image.
Alarm Function	<ul style="list-style-type: none">● Real-time respond to local alarm input, wireless alarm input and video detection as user pre-defined activation setup and exert audio prompt(allow user to pre-record audio file)● Realize real-time video detect such as motion detect, camera masking and video loss.
Network Monitor	<ul style="list-style-type: none">● IPC supports one-channel audio/video data transmit to network terminal and then decode. Delay is within 500ms (network bandwidth support needed)● Max supports 10 connections.● Adopt the following audio and video transmission protocol: HTTP, TCP, UDP, MULTICAST and RTP/RTCP and etc.● Support web access, widely used in WAN.
Network Management	<ul style="list-style-type: none">● Realize IPC configuration and management via Ethernet.● Support device management via web.● Support various network protocols.
Peripheral Equipment	<ul style="list-style-type: none">● Support peripheral equipment connection via the RS232 port, each peripheral equipment control protocol and interface can be set freely.● Support serial port (RS232/RS485) transparent data transmission.

Power	<ul style="list-style-type: none"> External power adapter. Support DC 12V/AC 24V power supply.
PoE	<ul style="list-style-type: none"> Support Power over Ethernet (PoE). Conform to the IEEE802.3af standard. Connect the device to the switcher or the router that supports the PoE function to realize the network power supply. To guarantee proper performance, please make sure the power sourcing device can supply at least 10W power. <p>The IPC-HF3110-F series product doe not support the PoE function.</p>
Assistant Function	<ul style="list-style-type: none"> Day/Night mode auto switch (ICR switch.) Backlight compensation: screen auto split to realize backlight compensation to adjust the bright. Support system resource information and running status real-time display. Support log function. Support video watermark function to avoid vicious video modification.

1.3 Specifications

1.3.1 Performance

Please refer to the following sheet for IPC performance specification.

Model Parameter		IPC-HF3300-P	IPC-HF3300-W	IPC-HF3110-P	IPC-HF3110-F
System	Main Processor	TI Davinci high performance DSP			
	OS	Embedded LINUX			
	System Resources	Support real-time network, local record, and remote operation at the same time.			
	User Interface	Remote operation interface such as WEB, DSS, PSS			
	System Status	SD card status, bit stream statistics, log ,software version ,online user			
Video Parameter	Image Sensor	1/2.8-inch CMOS	1/2.8-inch CMOS	1/3-inch CCD	1/3-inch CCD
	Pixel	2048 (H) *1536 (V)	2048 (H) *1536 (V)	1280 (H) *960 (V)	1280 (H) *960 (V)
	Day/Night Mode	Support day/night mode switch and IR-CUT at the same time.			
	Auto Iris	Optional			
	Gain Control	Fixed/Auto			
	White Balance	Manual/Auto			
	Electronic Shutter	Manual/Auto (It ranges from 1/50 to 1/10000)			
	Video Compression Standard	H.264/JPEG			
	Video Frame Rate	PAL: Main stream (2048*1536@15fps) , extra stream, (D1@12fps) Main stream (1920*1080@25fps extra stream (D1@12fps) NTSC: Main stream (2048*1536@15fps extra stream (D1@12fps) Main stream (1920*1080@30fps extra stream (D1@3fps)		PAL: Main stream (1280*960@12fps) , extra stream, (D1@12fps) Main stream (1280*720@25fps) , extra stream (D1@25fps) NTSC: Main stream (1280*960@22fps) , extra stream (D1@22fps) Main stream (1280*720@30fps) , extra stream (D1@30fps)	
	Video Bit Rate	160k~8Mbps. Support customized setup.			
Video Flip	Does not support mirror. Support flip function.				

	Video Quality	1~6 level (The 6 th level has the highest quality)
	Snapshot	Max 1f/s snapshot. File extension name is JPEG
	Privacy Mask	Each channel supports max 4 privacy mask zones
	Video Setup	Support parameter setup such as bright, contrast.
	Video Information	Channel title, time title, video loss, motion detect, privacy mask.
	Lens	Optional
	Lens Interface	C/CS optional
	Audio Input	1-channel, 3.5mm JACK MIC IN
Audio	Audio Output	1-channel, 3.5mm JACK SPEAK OUT
	Bidirectional Talk Input	Reuse the first audio input channel
	Audio Bit Rate	8kbps 16BIT
	Audio Compression Standard	G.711a/G.711u/PCM
Video	Motion Detect	396 (18*22) detection zones; sensitivity level ranges from 1 to 6 (The 6 th level has the highest sensitivity) Activation event, alarm device, audio/video storage, image snapshot, log, email SMTP function and etc.
	Video Loss	Activation event, alarm device, audio/video storage, image snapshot, log, email SMTP function and etc.
	Privacy mask	Sensitivity level ranges from 1 to 6. Each sensitivity level is the percentage of the privacy mask zone. Activation event, alarm device, audio/video storage, image snapshot, log, email SMTP function and etc.
Alarm Input		2-channel input, 1-channel output (on-off)
Record and Backup	Record Priority	Manual>Alarm >Motion detect>Schedule
	Record Search Mode	Support local data search via time/date, event type(alarm, motion detect, external alarm) and file type (record/image)
	Local Storage	Support local SD card hot swap
	Storage Management	Support display local storage status
Network	Wire Network	1-channel wire Ethernet port, 10/100 Base-T Ethernet
	Network Protocol	Standard HTTP,TCP/IP,ICMP.RTSP,RTP,UDP,RTCP,SMTP,FTP,DHCP,DNS,DDNS,PPP OE.
	Remote Operation	Monitor, PTZ control, playback, system setup, file download, log information, maintenance, upgrade and etc
AUX Interface	Video Output	1-channel analog video output, BNC port
	Network Interface	1-channel Ethernet, 10/100 Base-T Ethernet (The IPC-HF3110-F series product has the optical port.)
	3G Port	Reserved TD/EVDO/WCDMA function.
	WIFI Port	Support to receive the wireless signal (This function is for IPC-HF3300-W series product only.)
	RS485 port	PTZ control interface. Support various protocols.
	Flange-back Port	Support flange-back adjustment
General Parameters	Power	Support AC24V/DC12V power and PoE. (The IPC-HF3110-F series product does not support the PoE function.)
	Power Consumption	<10W

	Working Temperature	-10℃~+60℃
	Working Humidify	10%~90%
	Dimensions	70*63.2*149.5
	Weight	650g
	Installation	Support various installation modes (Enclosure and bracket is optional)

1.3.2 Factory Default Setup

Please refer to the following sheet for factory default setup information.

Function Configuration Type		Item Name	Default setup				
			IPC-HF3300-P	IPC-HF3300-W	IPC-HF3110-P	IPC-HF3110-F	
General Setup		Date format	Y-M-D				
		DST	Disable by default				
		Date separator	' - '				
		Time format	24H				
		Language	Simplified Chinese				
		When HDD is full	Overwrite				
		Record duration	60M				
		Device No.	8				
		Video type	NTSC				
Encode Setup	Main Stream	Channel	Channel01				
		Encode mode	H.264				
		Audio/Video enable	Enable audio and video				
		General bit stream	General bit stream				
		Resolution	1080P	1080P	720P	720P	
		Frame rate	30				
		Bit stream control	VBR				
		Quality	Good				
		Bit stream value	8192				
		I frame interval control	50				
	Extra Stream	Extension Stream	General bit stream	General bit stream			
			Audio/Video enable	Enable audio and video			
			Resolution	D1			
			Frame rate	6			
			Bit stream control	VBR			
			Quality	Good			
			Bit stream value	1024			
		Image Color	Brightness:50				
			Contrast:50				
			Saturation:50				
			Watermark	Enable			
				Watermark: all			
				Watermark type: character			
				Watermark: DigitalCCTV			
	Privacy Mask	Never					
		Time title	Enable. OSD transparent (read-only):0				
			Channel title	Enable. OSD transparent (read-only):0			
Record Setup	Channel	Ch01					

	Pre-record	5 seconds.	
	Time Setup	Start Time	0:00:00
		End Time	23:59:59
		Record	Period 1:Enable motion detection/alarm
		Snapshot	Period 1: Enable motion detection/alarm
Week	Sunday		
COM Setup	Option	COM01	
	Function	General	
	Data bit	8	
	Stop bit	1	
	Baud rate	115200	
	Parity	None	
Network Setup	Ethernet	Port 01	
	DHCP	Disable	
	IP address	192.168.1.108	
	Subnet mask	255.255.0.0	
	Gateway	192.168.0.1	
	Device name	Device factory default name	
	TCP port	37777	
	HTTP port	80	
	UDP port	37778	
	Network user connection amount	10	
	Network transmission QoS	Disable	
	Remote host	Multiple broadcast_group	
	Enable	Disable	
	IP address	239.255.42.42	
	Port	36666	
	Email setup	Enable	
	Multiple DDNs	Disable	
	NAS setup	Disable	
	NTP setup	Disable	
	Alarm server	Disable	
Alarm Setup	Event type	Local alarm	
	Alarm input	Input 01, disable	
	Type	Normal open	
	Setup	Period: Start time 0:00:00 End time:23:59:59 Period 1:enable Week: Sunday	
	Anti-dither	0 second	
	General output	Disable	
	Alarm latch	10 seconds	
	Record channel	1, enable	
	Record latch	10 seconds	
	Send email	Disable	
	PTZ activation	Disable Event type: never Address: 0	
	Snapshot	Disable	
	Video Detection	Event type	Motion detection
Channel		Ch01, Disable	
Sensitivity		3	
Time period setup		Period:	

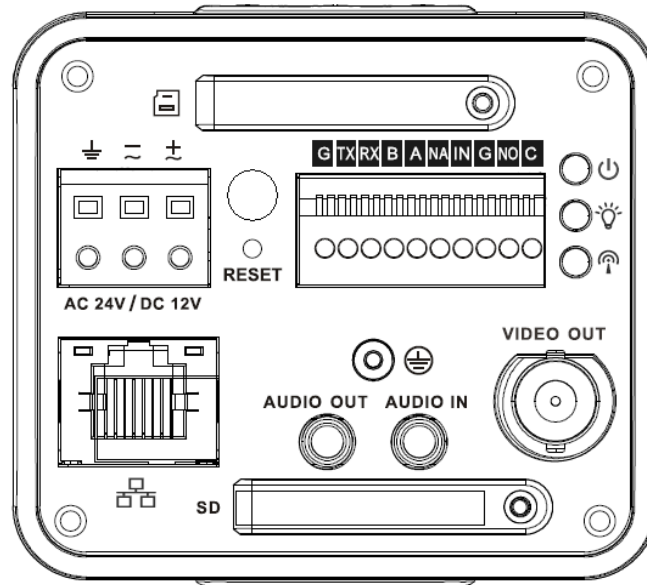
		Start time 0:00:00 End time:23:59:59 Period 1:enable Week: Sunday	
	Anti-dither	5 seconds	
	General output	Disable	
	Alarm latch	10 seconds	
	Record channel	Disable	
	Record latch	10 seconds	
	Send email	Disable	
	PTZ activation	Event type: Never Address: 0 Disable	
	Snapshot	Disable	
PTZ Setup	Channel	Ch01	
	Protocol	DH-SD1	
	Address	1	
	Baud rate	115200	
	Data bit	8	
	Stop bit	1	
	Parity	None	
Default and Backup	All	Disable	
	General	Disable	
	Encode	Disable	
	Record	Disable	
	COM	Disable	
	Network	Disable	
	Alarm	Disable	
	Video detection	Disable	
	Display output	Disable	
	Channel No.	Disable	
Advanced	Record control		Auto. Ch1 (This series device does not support this function.)
	Abnormity	Even Type	No HDD, Disable
		General Output	Disable
		Alarm Latch	10 seconds
		Send email	Disable
	User account		admin--- password: admin (reusable) 888888--- password: 888888(reusable) 666666--- password: 666666(reusable) default--- password: tluafed
	Snapshot	Channel	Ch01
		Snapshot mode	Scheduled
		Frame rate	1f/s
		Resolution	1080P
		Quality	80%
	Auto maintain	Auto reboot	2.00 each day
		Auto delete old files	Never
Camera property	Channel	1	
	Exposure Mode	Auto	
	Day/Night Mode	Color	
	Backlight Compensation	Disable	
	Auto Aperture	N/A	

	White Balance	Auto
	Scene Mode	Auto
	Signal Type	INT
	Mirror	N/A
	Rotate	Support
Auto Registration	Enable	Disable
	SN	1
	IP	0.0.0.0
	Port	7000
	Device ID	none
DNS Setup	DNS	8.8.8.8
	Alternative DNS	8.8.8.8

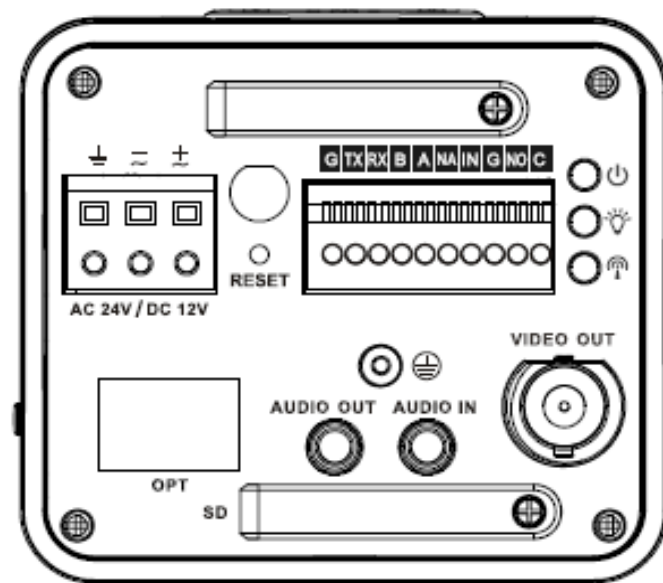
2 Framework

2.1 Rear Panel

This series IP camera rear panel is shown as below. See Figure 2-1.



The rear panel with the network port







The rear panel with the 100M fiber port


Figure 2-1


Please refer to the following sheet for detail information.

Interface Name		Connector	Function
VIDEO OUT	Video output port	BNC	Output analog video signal. Can connect to

			TV monitor to view video.
AC 24V/ DC 12V	Power port		<ul style="list-style-type: none"> ● Power port. ● Input 12V DC or AC 24V
STATUS Indication Light	Red light 		<ul style="list-style-type: none"> ● System boot up- red light is on ● Safe mode-red light flashes ● System upgrades-red light flashes ● System resets- red light flashes.
	Green light 		<ul style="list-style-type: none"> ● Normal working status-green light is on. ● Display record status:Record-green light flashes.
	Yellow light 		<ul style="list-style-type: none"> ● Wireless status light: ● Wireless data transmission- yellow light flashes. ● Detect the wireless device- yellow light is on.

	3G		Connect to 3G card. Please note it is the reserved function. Current series IPC does not support this function right now.
WIFI	3G/WIFI port		Connect to 3G/WIFI antenna to receive the wireless signal. Please note this function is for some series products only.
IN	Alarm input port	I/O port	Alarm input port 1. To receive the signal from the external alarm device.
NO	1-ch alarm output		Alarm output port. To output alarm signal to the alarm device. <ul style="list-style-type: none"> ● NO: Normal open alarm output end. ● C: Alarm output public end.
C			
G	GND		Alarm input ground end.
A	RS485 port		RS485_A port, control external PTZ
B			RS485_B port, control external PTZ
RX	RS232 port		RS232_RX, RS232 receive end.
TX			RS232_TX, RS232 COM send out end.
G	GND	RS232 ground end	

NA	Reserved port		N/A
RESET	RESET button		Restore factory default setup. When system is running normally (power indication light is red), press the RESET button for at least 5 seconds, system can restore factory default setup.
AUDIO OUT	Audio output port	Audio output 3.5mm JACK port.	Output audio signal to the device such as sound box.
AUDIO IN	Audio input port	Audio input 3.5mm JACK port.	Input audio signal. Receive signals from devices such as pick-up.
LAN 	Network port	Ethernet port	<ul style="list-style-type: none"> ● Connect to standard Ethernet cable. ● Support PoE function.
OPT	100M fiber port	155M single fiber dual-direction SFP fiber module	Transmit 100M Ethernet data.

SD	SD card port		<p>Connect to SD card.</p> <p>Note</p> <ul style="list-style-type: none"> ● When you install the SD card, please make sure current card is not in write mode and then you can install it to the camera. ● When you remove the SD card, please make sure current card is not in write mode. Otherwise it may result in data loss or card damage. ● Before hot swap, please stop record operation.
	GND		Please make sure the device is securely earthed to prevent the thunderstorm strike.

2.2 Side Panel

Please refer to the following interface for side panel dimension information. The unit is mm. See Figure 2-2.

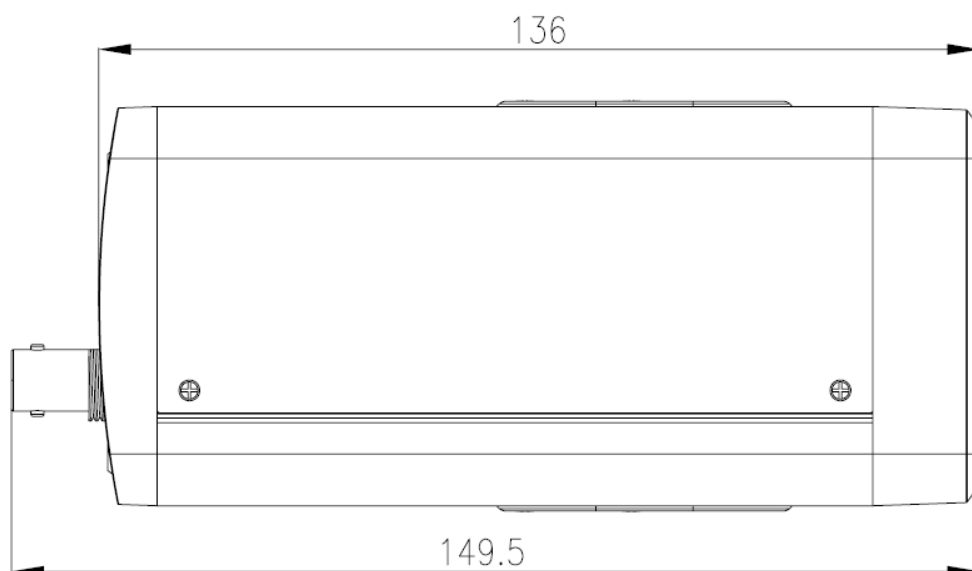


Figure 2-2

2.3 Lens

Please refer to the following interface for lens dimension information. The unit is mm. See Figure 2-3.

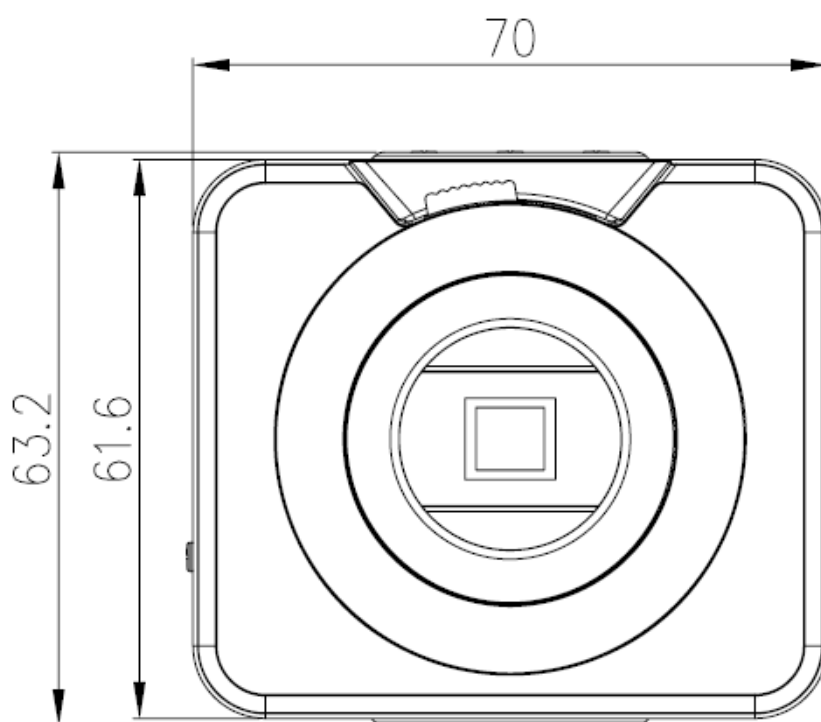


Figure 2-3

2.4 Bidirectional talk

2.4.1 Device-end to PC-end

Device Connection

Please connect the speaker or the pickup to the first audio input port in the device rear panel. Then connect the earphone or the sound box to the audio output port in the PC. Login the Web and then enable the corresponding channel real-time monitor. Please refer to the following interface to enable bidirectional talk.

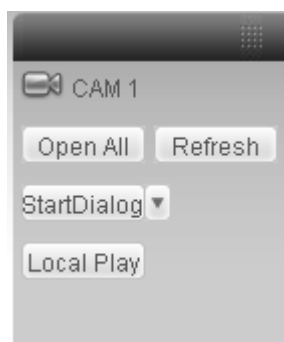


Figure 2-4

Listening Operation

At the device end, speak via the speaker or the pickup, and then you can get the audio from the earphone or sound box at the pc-end.

2.4.2 PC-end to the Device-end Device Connection

Connect the speaker or the pickup to the audio output port in the PC and then connect the earphone or the sound box to the first audio input port in the device rear panel. Login the Web and then enable the corresponding channel real-time monitor. Please refer to the above interface (Figure 2-4) to enable bidirectional talk.

Listening Operation

At the PC-end, speak via the speaker or the pickup, and then you can get the audio from the earphone or sound box at the device-end.

2.5 Alarm Setup

The alarm setup interface is shown as below. See Figure 2-5.

- Connect the alarm input device to the alarm input port.
- Connect the alarm output device to the alarm output port and alarm output public port. The alarm output port supports NO (normal open) alarm device only.
- Open the Web, go to the Figure 2-5. Here you can set the alarm input setup and alarm output setup. Please set the alarm in for the alarm input in the rear panel. Then you can select the corresponding type (NO/NC) according to the high/low level type when an alarm occurs.
- Set the WEB alarm output. The alarm output 01 is the alarm output port of the device rear panel.

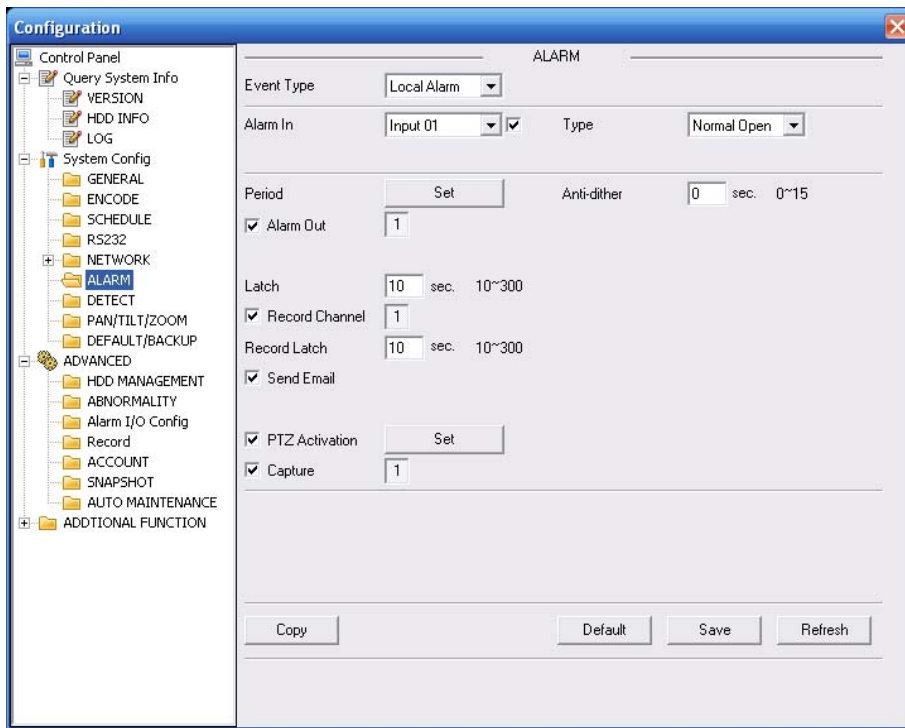


Figure 2-5

3 Installation

3.1 Lens Installation

3.1.1 Auto Aperture Lens

Please follow the steps listed below for auto aperture lens installation. The interface is shown as in Figure 3-1 and Figure 3-2.

- Remove the CCD protection cap of the device, and then line up the lens to the proper installation position. Turn clockwise until the lens is fixed firmly.
- Insert the lens cable socket to the auto lens connector in the side panel.
- When it is ∞ , you can turn the ADJUST screw to adjust the focus circle to adjust the focal distance.

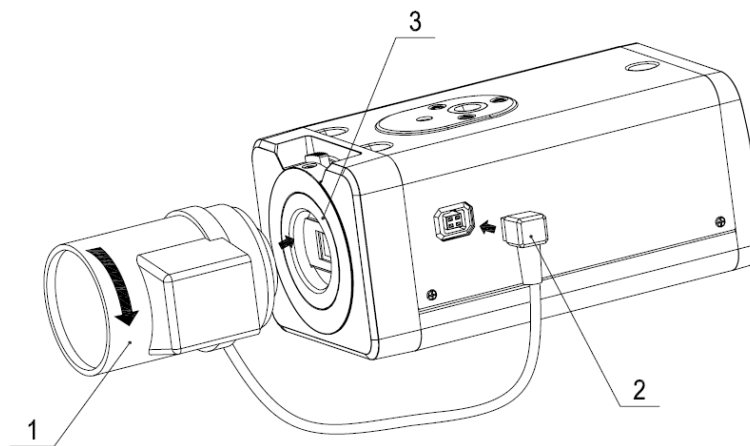


Figure 3-1

3.1.2 Manual Lens

Install C type lens

- Remove the CCD protection cap; use the cross-head screwdriver to remove the screw near the focal circle. Then please turn counter clockwise to move the focal circle out for several millimeters. Now you can focus manually.
- Then please use the cross-head screwdriver to fix the screw back firmly. Secure the focal circle.
- Install the C/CS adapter to the camera.
- Finally, line up lens to the proper installation. Turn clockwise to fix the lens firmly.

Install CS type lens

- Remove the CCD protection cap; use the cross-head screwdriver to remove the screw near the focal circle. Then please turn counter clockwise to move the focal circle to the end and now you can focus manually.
- Then please use the cross-head screwdriver to fix the screw back firmly. Secure the focal circle.
- Finally, line up lens to the proper installation. Turn clockwise to fix the lens firmly.

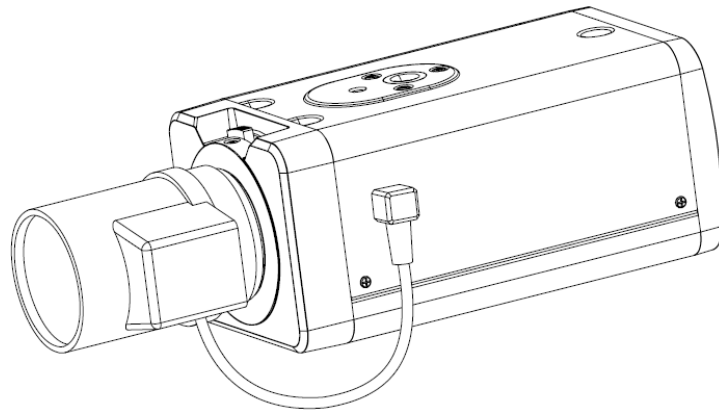


Figure 3-2

3.1.3 Remove Lens

Please follow the steps listed below to remove lens. The interface is shown as in Figure 3-3.

- Turn the lens counter clockwise and then remove it from the camera.
- Unplug the auto lens cable socket from the auto lens connector. If you are using the manual aperture lens, please skip to the following step.
- If there is no lens, please put the CCD protection cap back to protect the CCD.

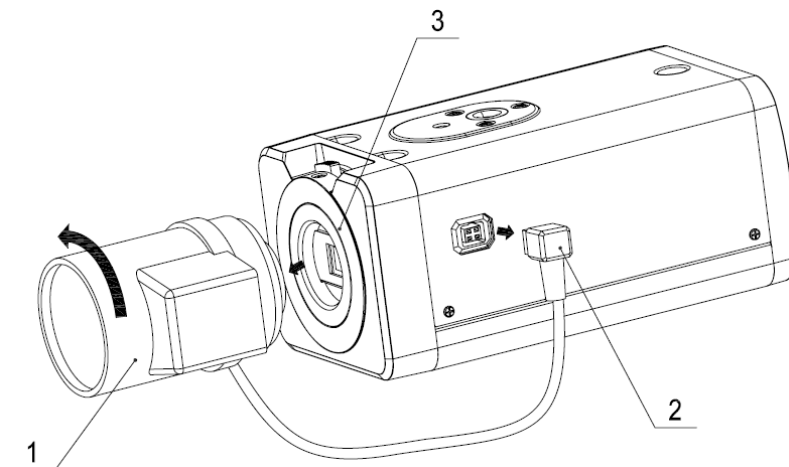


Figure 3-3

3.2 SD Card

3.2.1 Installation

Please follow the steps listed below to install SD card. The interface is shown as in Figure 3-4 and Figure 3-5.

- Use the screwdriver to loosen the SD card protection screw in the rear panel, and then remove the SD card protection cap from the camera.
- Install the SD card to the camera according to the proper installation position.
- Put the SD card protection cap back.
- Use the screwdriver to fix the SD card protection cap screw firmly to secure the SD card protection cap in the camera.

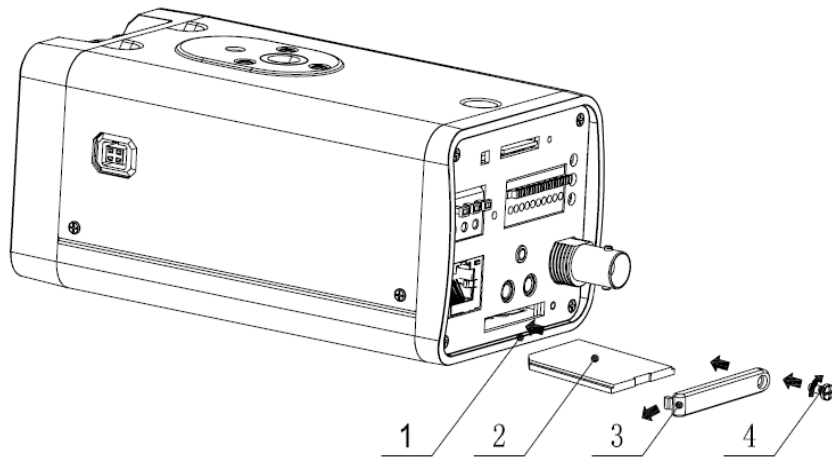


Figure 3-4

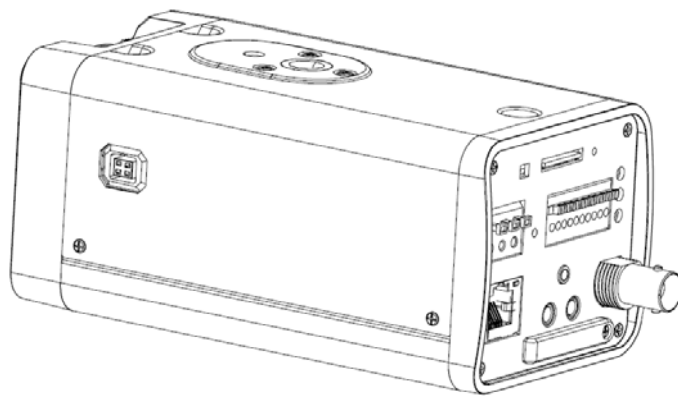


Figure 3-5

3.2.2 Remove

Please follow the steps listed below to remove SD card. The interface is shown as Figure 3-6.

- Use the screwdriver to loosen the screw of SD card protection cap in the rear panel. Remove the cap from the camera.
- Follow the SD card direction to remove the SD card.
- Insert the SD card protection cap.
- Use the screwdriver to fix the screw to secure the protection cap.

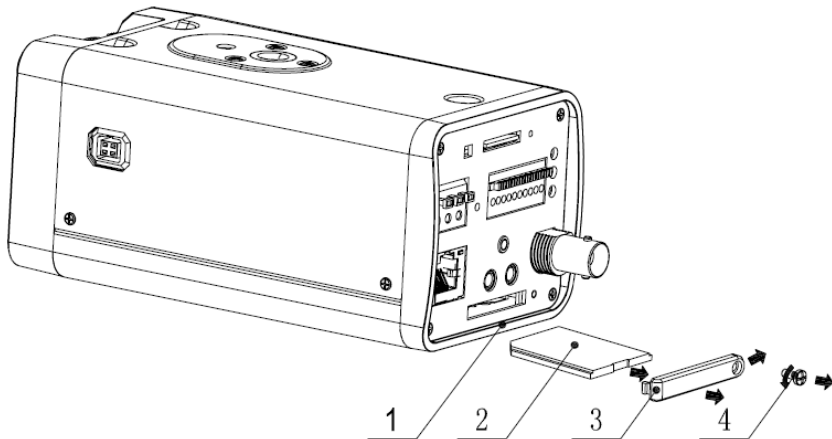


Figure 3-6

3.3 3G Card

3.3.1 Installation

The 3G card installation is the same with the SD card.

Please follow the steps listed below to install 3G card. The interfaces are shown as Figure 3-7 and Figure 3-8.

- Use the screwdriver to loosen the 3G card protection cap screw in the side panel, and then remove the 3G card protection cap from the camera.
- Install the 3G card to the camera according to the proper installation position.
- Put the 3G card protection cap back.
- Use the screwdriver to fix the 3G card protection cap screw firmly to secure the 3G card protection cap.

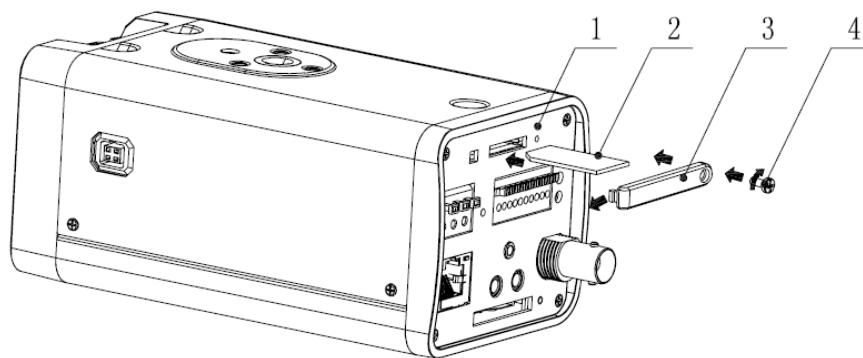


Figure 3-7

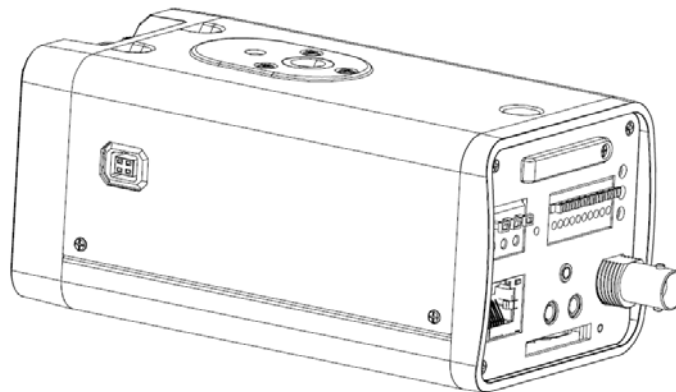


Figure 3-8

3.3.2 Remove

Please follow the steps listed below to remove 3G card. The interface is shown as Figure 3-9.

- Use the screwdriver to loosen the screw of 3G card protection cap in the rear panel. Remove the cap from the camera.
- Follow the 3G card direction to remove the 3G card.
- Insert the 3G card protection cap.
- Use the screwdriver to fix the screw to secure the protection cap.

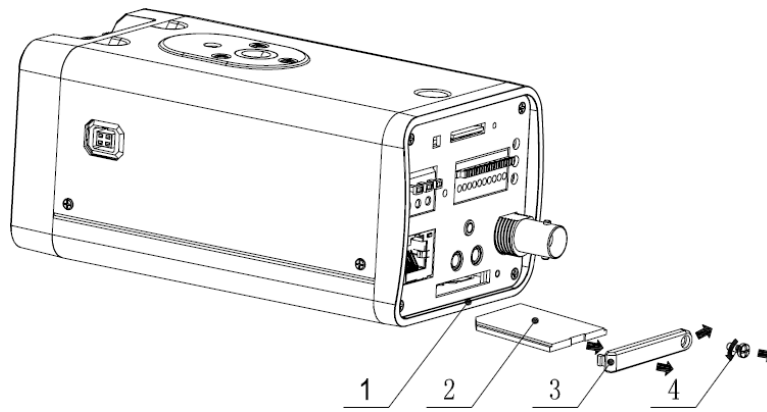


Figure 3-9

3.4 3G/WIFI Antenna

3.4.1 Installation

Line up the thread of the screw of the 3G/WIFI antenna to the thread of the rear panel. See Figure 3-10.

Please turn according to the direction in the following figure until antenna is secure firmly. See Figure 3-11.

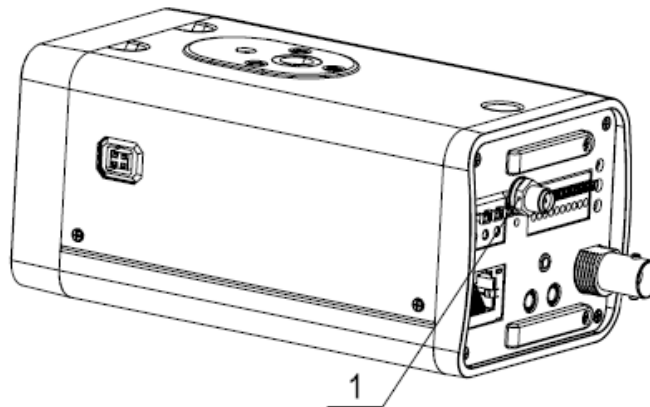


Figure 3-10

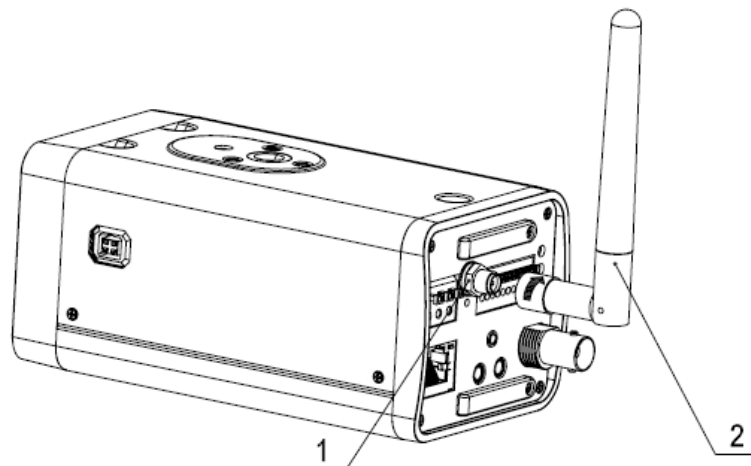


Figure 3-11

After you fix the 3G/WIFI antenna to the WIFI port of the rear panel, you can adjust the antenna direction. See Figure 3-12.

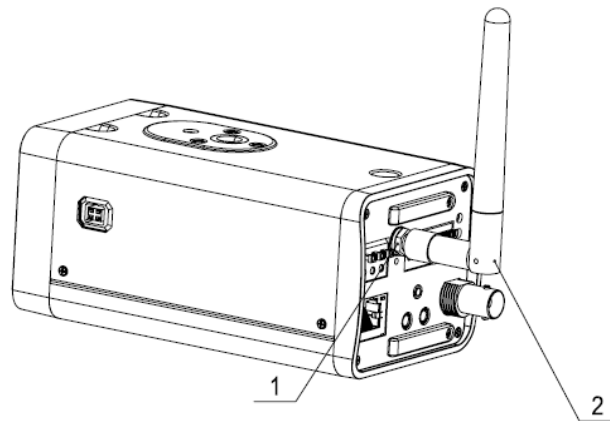


Figure 3-12

3.4.2 Remove

Use your hands to hold the 3G/WIFI thread end and then turn according to the following figure. See Figure 3-13.

Now you can see the antenna is away from the thread. See Figure 3-14.

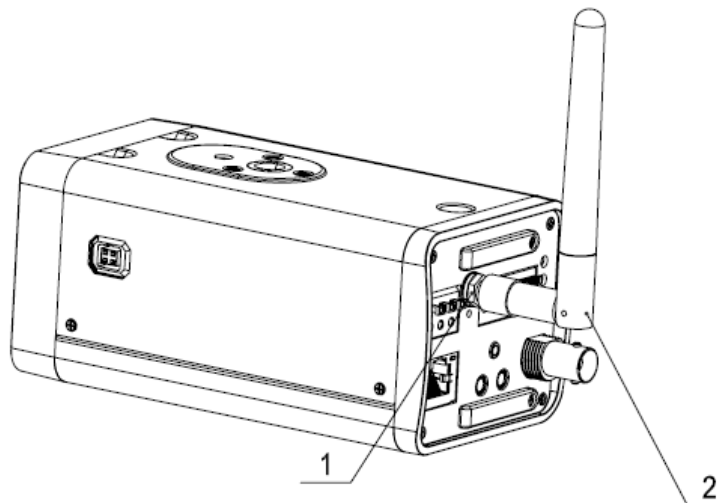


Figure 3-13

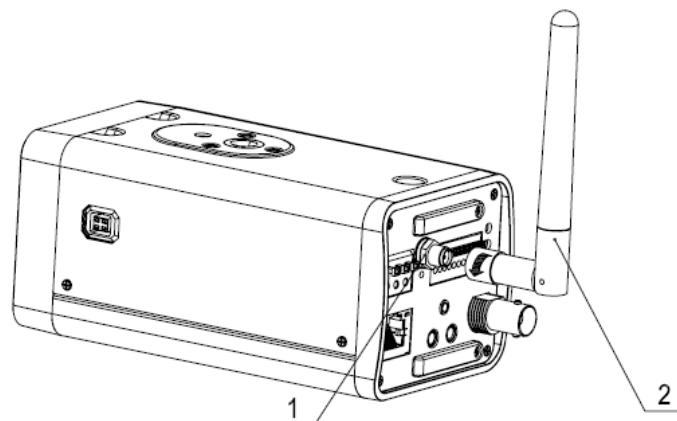


Figure 3-14

Remove the 3G/WIFI antenna from the port of the rear panel. See Figure 3-15.

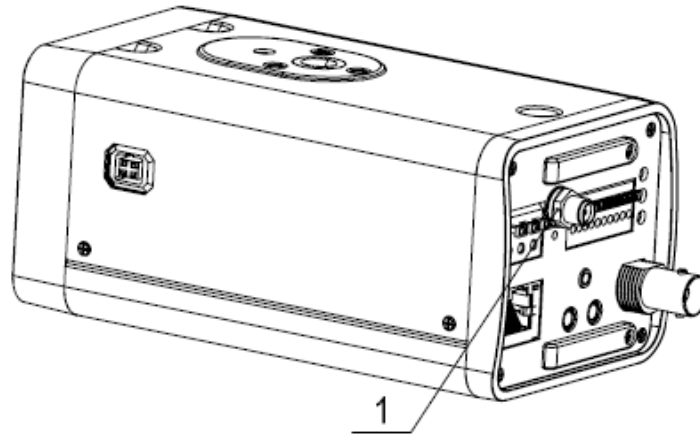


Figure 3-15

3.5 I/O Port

Install Cable

Please follow the steps listed below to install the cable. See Figure 3-16.

Use the small slotted screwdriver to press the corresponding button of cable groove. Insert the cable into the groove and then release the screwdriver.

Remove Cable

Please follow the steps listed below to remove the cable.

Use the small slotted screwdriver to press the corresponding button of cable groove. Remove the cable out of the groove and then release the screwdriver.

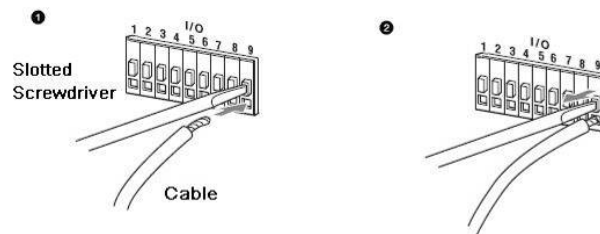


Figure 3-16

4 Quick Configuration Tool

4.1 Overview

Quick configuration tool can search current IP address, modify IP address. At the same time, you can use it to upgrade the device.

Please note the tool only applies to the IP addresses in the same segment.

4.2 Operation

Double click the “ConfigTools.exe” icon, you can see an interface is shown as in Figure 4-1.

In the device list interface, you can view device IP address, port number, subnet mask, default gateway, MAC address and etc.

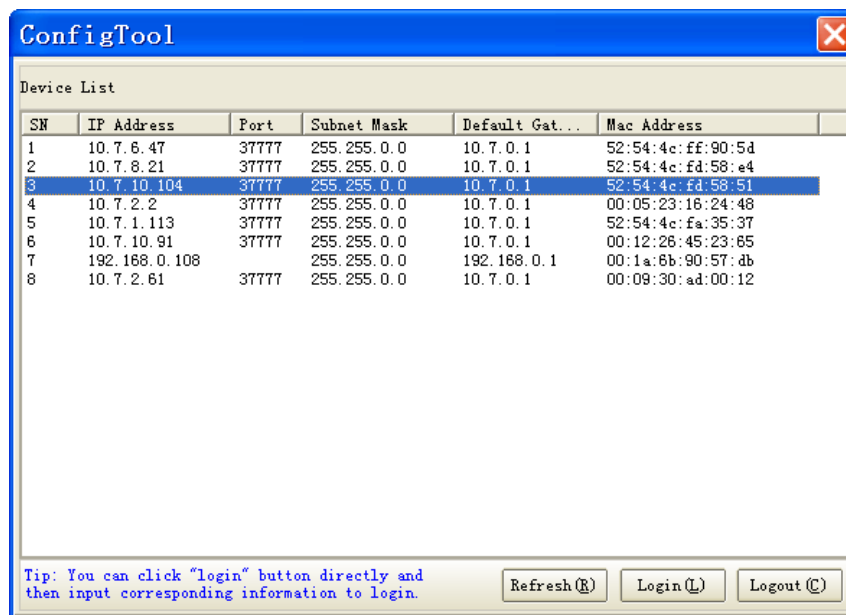


Figure 4-1

Select one IP address and then right click mouse, you can see an interface is shown as in Figure 4-2.

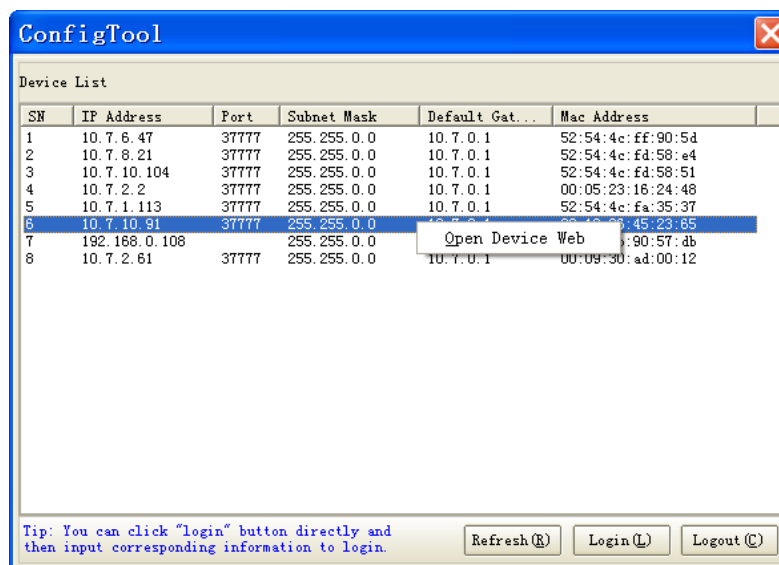


Figure 4-2

Select the “Open Device Web” item; you can go to the corresponding web login interface. See Figure 4-3.

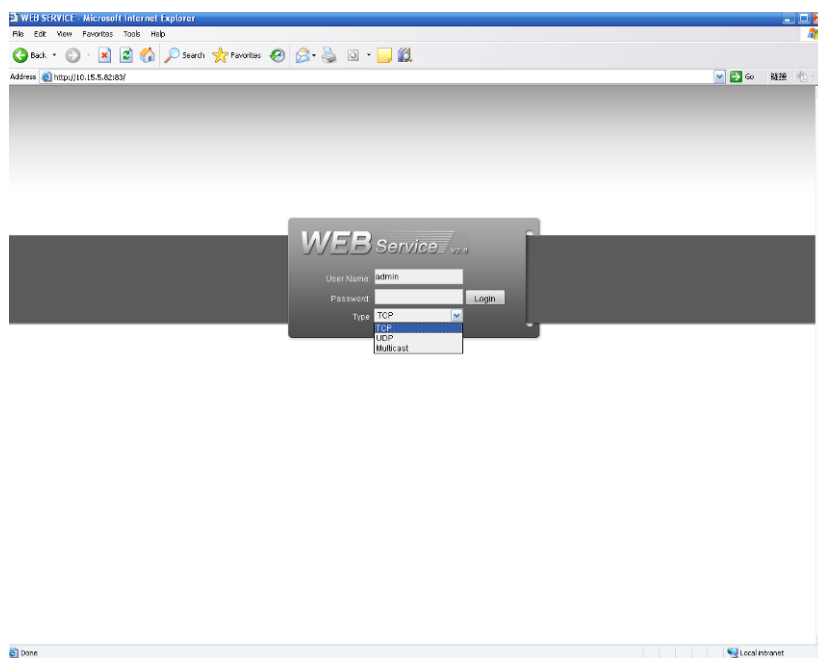


Figure 4-3

If you want to modify the device IP address without logging in the device web interface, you can go to the configuration tool main interface to set.

In the configuration tool search interface (Figure 4-1), please select a device IP address and then double click it to open the login interface. Or you can select an IP address and then click the Login button to go to the login interface. See Figure 4-4.

In Figure 4-4, you can view device IP address, user name, password and port. Please modify the corresponding information to login.

Please note the port information here shall be identical with the port value you set in TCP port in Web Network interface. Otherwise, you can not login the device.

If you are use device background upgrade port 3800 to login, other setups are all invalid.

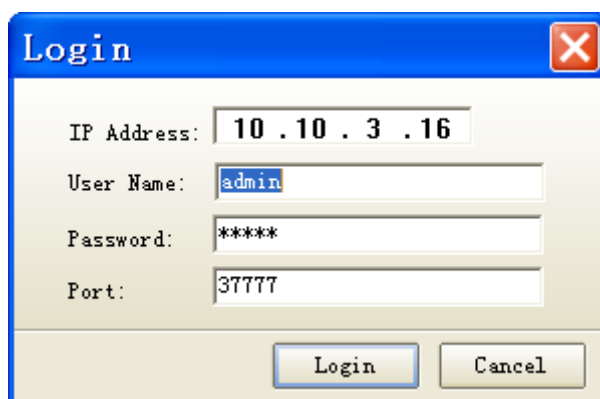


Figure 4-4

After you logged in, the configuration tool main interface is shown as below. See Figure 4-5.

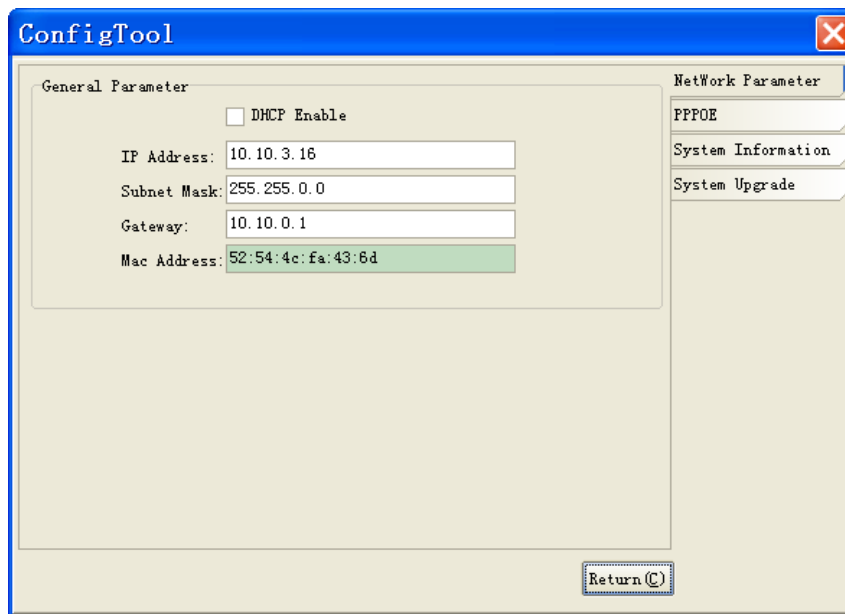


Figure 4-5

For detailed information and operation instruction of the quick configuration tool, please refer to the *Quick Configuration Tool User's Manual* included in the resources CD.

5 Web Operation

This series IPC product support the Web access and management via PC.

Web includes several modules includes monitor channel list, record search, alarm setup, system configuration, PTZ control, monitor window and etc.

IP camera factory default setup:

- IP address: 192.168.1.108.
- User name: admin
- Password: admin

5.1 Network Connection

Please follow the steps listed below for network connection.

- Make sure the IPC has connected to the network properly.
- IPC IP address and PC IP address shall be in the same network segment. IPC default IP address is 192.168.1.108. If there is router, please set the corresponding gateway and subnet mask.
- Use order ping `***.***.***.***`(* IP camera address) to check connection is OK or not.

5.2 Login and Main Interface

Open IE and input IP camera address in the address bar.

For example, if your camera IP is 192.168.1.108, then please input `http:// 192.168.1.108` in IE address bar. See Figure 5-1.

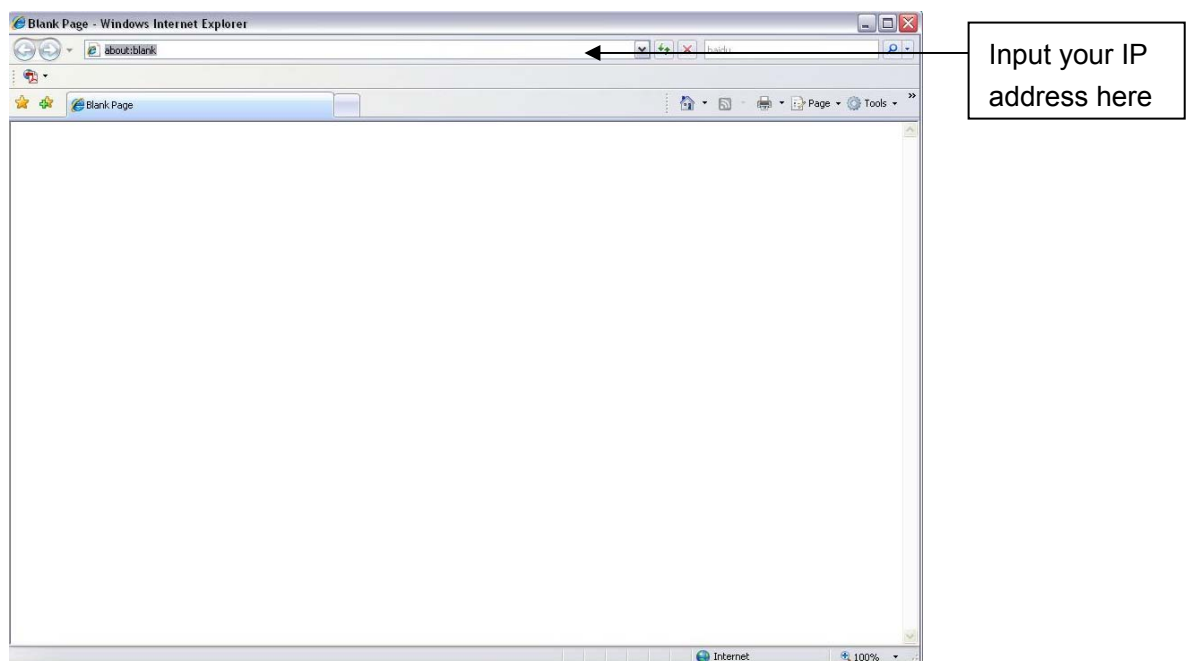


Figure 5-1

System pops up warning information to ask you whether install control webrec.cab or not.

Please click OK button, system can automatically install the control. When system is upgrading, it can overwrite the previous Web too.

If you can't download the ActiveX file, please check whether you have installed the plug-in to disable the control download. Or you can lower the IE security level. See Figure 5-2.

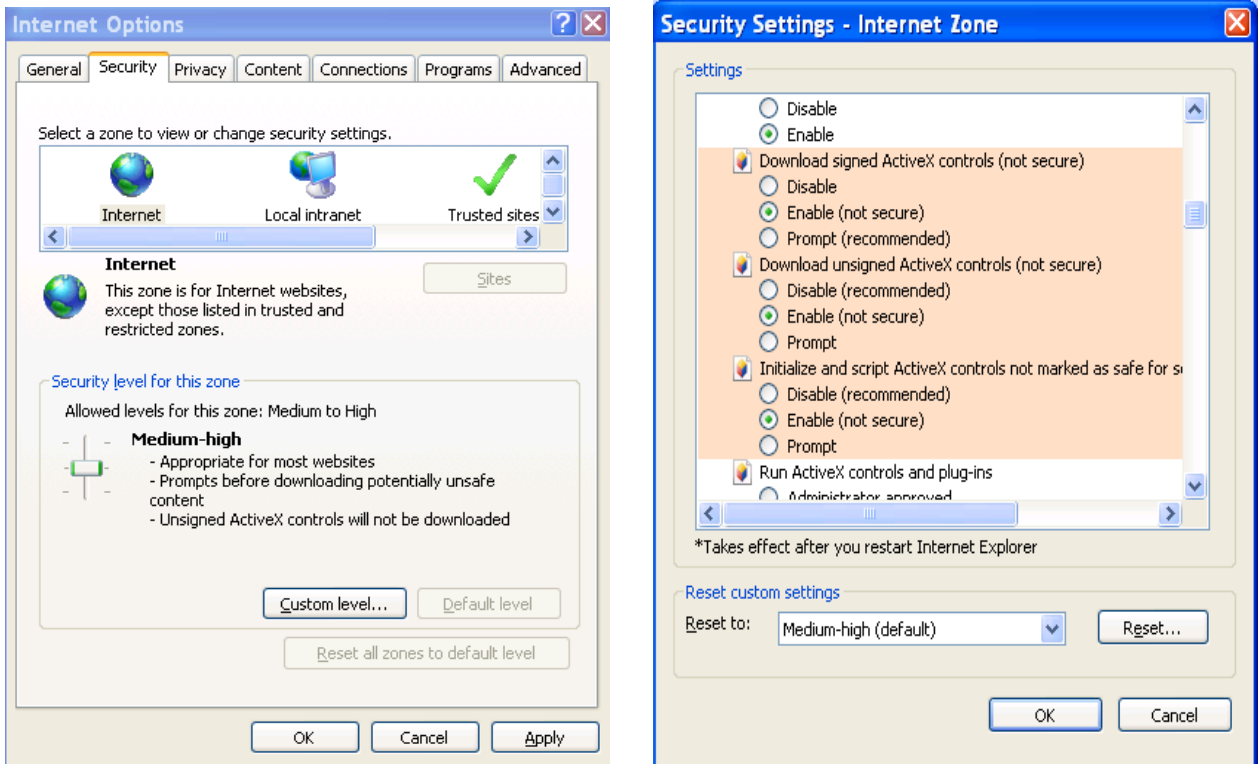


Figure 5-2

After installation, the interface is shown as below. See Figure 5-3.

Please input your user name and password.

Default factory name is admin and password is admin.

The login type includes: TCP/UDP/Multicast.

Note: For security reasons, please modify your password after you first login.

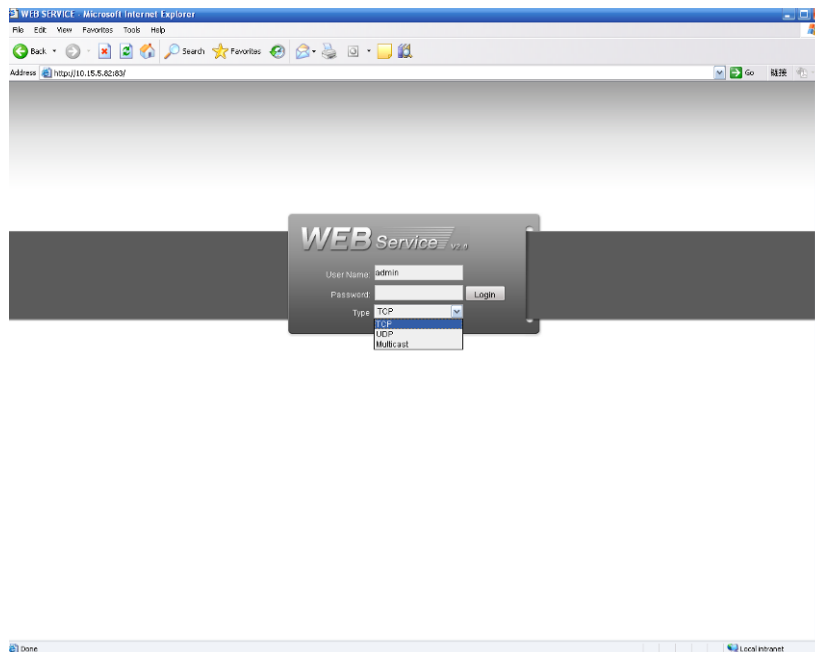


Figure 5-3

After you logged in, you can see the main window. See Figure 5-4.

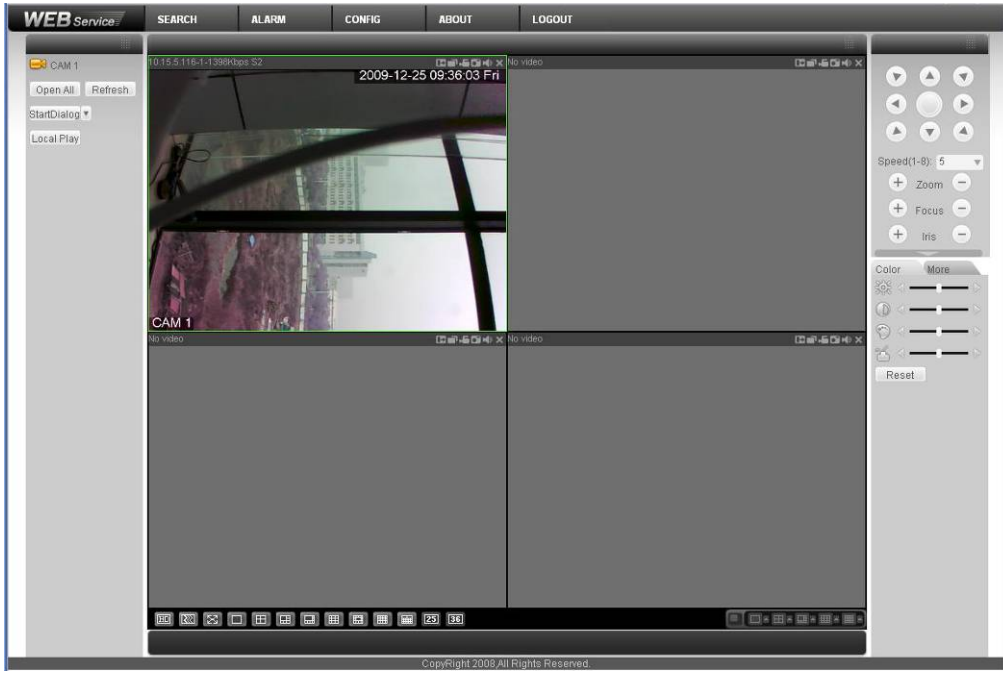


Figure 5-4

Please refer to the Web Operation Manual included in the resource CD for detailed operation instruction.

6 FAQ

Bug	
I can not boot up the device or can not control the device.	Please click RESET button for at least five seconds to restore factory default setup.
SD card hot swap	Before draw out SD card, please stop record or snapshot first and then wait for at least 15 seconds to remove the SD card. All the operations before is to maintain data integrity. Otherwise you can lose all the data in the SD card!
SD card write times	Do not set the SD card as the storage media to storage the schedule record file. It may damage the SD card duration.
I can not use the disk as the storage media.	When disk information is shown as hibernation or capacity is 0, please format it first (Via Web).
I can not upgrade the device via network.	The status indication light is shown as red when network upgrade operation failed. You can use port 3800 to continue upgrade.
Recommended SD card brand	Kingston 4GB、Kingston 1GB、Kingston 16GB、Transcend 16GB, SanDisk 1G, SanDisk 4G Usually we recommend the 4GB (or higher) high speed card in case the slow speed results in data loss.
Audio function	Please use active device for the audio monitor input, otherwise there is no audio in the client-end.

Appendix Toxic or Hazardous Materials or Elements

Component Name	Toxic or Hazardous Materials or Elements					
	Pb	Hg	Cd	Cr VI	PBB	PBDE
Circuit Board Component	○	○	○	○	○	○
Device Construction Material	○	○	○	○	○	○
Wire and Cable	○	○	○	○	○	○
Power Adapter	○	○	○	○	○	○
Packing Components	○	○	○	○	○	○
Accessories	○	○	○	○	○	○

O: Indicates that the concentration of the hazardous substance in all homogeneous materials in the parts is below the relevant threshold of the SJ/T11363-2006 standard.

X: Indicates that the concentration of the hazardous substance of at least one of all homogeneous materials in the parts is above the relevant threshold of the SJ/T11363-2006 standard. During the environmental-friendly use period (EFUP) period, the toxic or hazardous substance or elements contained in products will not leak or mutate so that the use of these (substances or elements) will not result in any severe environmental pollution, any bodily injury or damage to any assets. The consumer is not authorized to process such kind of substances or elements, please return to the corresponding local authorities to process according to your local government statutes.

Note

- **This user's manual is for reference only.**
- **Slight difference may be found in user interface.**
- **All the designs and software here are subject to change without prior written notice.**
- **If there is any uncertainty or controversy, please refer to the final explanation of us.**
- **Please visit our website for more information.**