

13 in 1 cavitation multipolar rf vacuum led photon cold hot weight loss skin lifting beauty machine

User Manual



Introduction

KIM9 is a multifunction beauty machine which can promote tissue metabolism, repel the cellulite, tighten the skin, strengthen the skin elasticity and so on. Its effect will last for a long time.

KIM9 combines 40K cavitation ultrasound for body shape, bipolar tripolar multipolar RF for face lifting body shape, vacuum RF suction for body contour slimming and face skin rejuvenation, led photontherapy hot cold treatment

Technical Parameters

Power supply Input: 110V/220V 60HZ/50HZ

Power :230W

40K cavitation head:

Power supply output:150V

Frequency:40KHz

Power:25W

Big Vacuum+Bipolar RF head for body

Power supply output:66V

Frequency:5MHz

Power:95W

Small Vacuum+Bipolar RF head for face

Power supply output:66V

Frequency:5MHz

Power:25W

10 polar RF head for body

Power supply output:96V

Frequency:5MHz

Power:65W

Sextupolar RF head for body

Power supply output:86V

Frequency:5MHz

Power:55W

Tripolar RF head for face

Power supply output:66V

Frequency:3MHz

Power:25W

Bipolar RF head for body

Power supply output:56V

Frequency:3MHz

Power:15W

Arc RF head for shoulder and arm

Power supply output:66V

Frequency:3MHz

Power:35W

Big Hot & Cold Head

Power supply output:36V

Power:35W

Medium Hot & Cold Head

Power supply output:36v

Power:25W

Small Hot & Cold Head

Power supply output:36V

Power:15W

Big Led Photon Therapy Head

Power supply output:36V

Power:35W

Small Led Photon Therapy Head

Power supply output:36V

Power:15W

40K Cavitation Ultrasound for Body Shape



40K cavitation probe



Generation of bubbles

Increase number and size of bubbles

Bursting of micro bubbles

Liquefy fats/emulsify fats



Function

- ★ Complete break & soften deep fat bod
- ★ Body slimming and shaping
- ★ Improve lymphatic circulation
- ★ improving skin-elasticity and skin-shine

Vacuum RF Suction Body Contour Slimming

Vacuum RF Probe



The diagram shows a cross-section of the skin and underlying fat cells. A central blue column represents the vacuum suction, with arrows pointing upwards labeled 'pressure vacuum'. On either side of the vacuum column are two red electrodes labeled 'RF'. The fat cells are depicted as orange spheres. The skin surface is shown with a wavy line representing the dermal layer.

Function

- ★ Loss Weight
- ★ Promote collagen electric Bai Chongsheng, let skin restore luster

Application

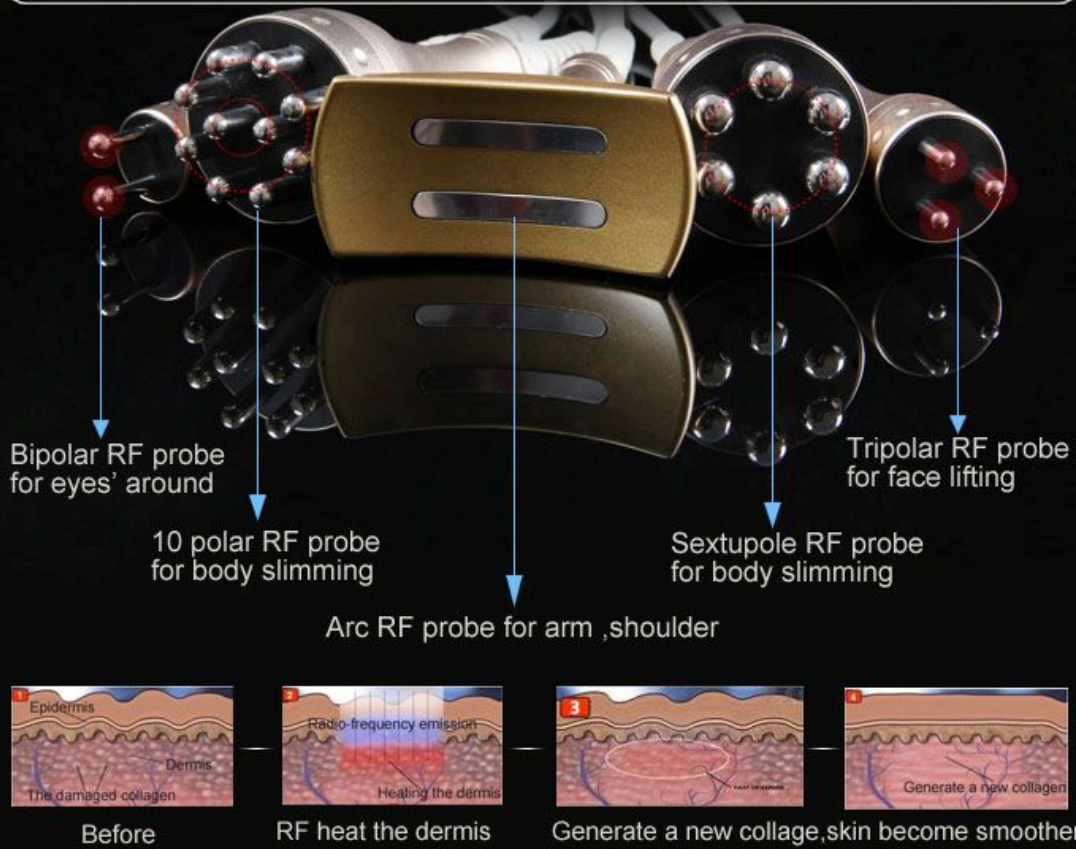
- ★ Big vacuum RF probe for body slimming
- ★ Small vacuum RF probe for face lifting



The photograph shows two vacuum RF probes. The larger one is labeled 'Big' and the smaller one is labeled 'Small'. Both probes have a silver-colored handle and a black, flexible, corrugated tube. The larger probe has a wider, circular suction head, while the smaller one has a narrower, cylindrical suction head. Blue lines with dots point to the respective labels 'Small' and 'Big'.

Bipolar Tripolar Multipolar RF Face Lifting Body Shape

5 RF Probes

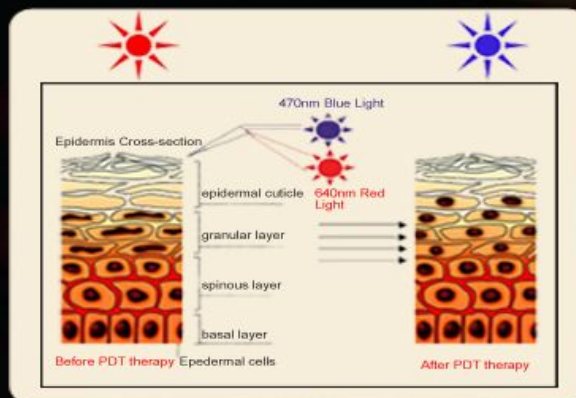


Led Photontherapy

LED Photon Probes



Working Principles

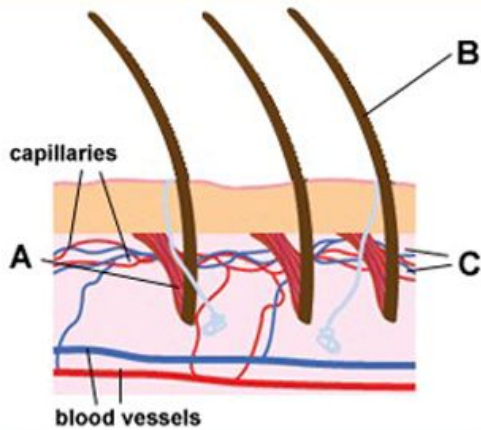


Function

- ☆ Stimulates collagen production which smoothes fine lines and wrinkles
- ☆ Reduces hyperpigmentation and age spot
- ☆ Reduces pore size, acne scars
- ☆ Increase skin elasticity and improve circulation
- ☆ Reduces the overall redness, flushing and dilated capillaries of

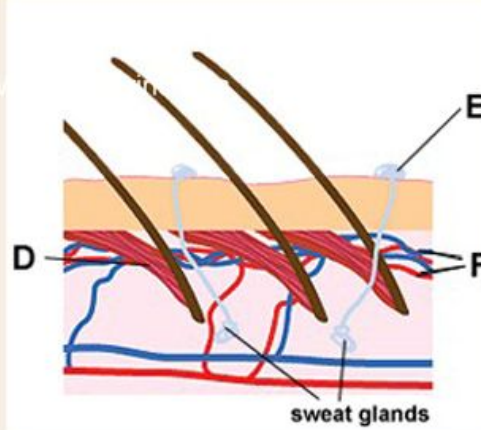
Hot & Cold probes

Too cold



- A - Hair muscles pull hairs on end.
- B - Erect hairs trap air.
- C - Blood flow in capillaries decreases.

Too hot



- D - Hair muscles relax. Hairs lie flat so heat can escape.
- E - Sweat secreted by sweat glands. Cools skin by evaporation.
- F - Blood flow in capillaries increases.



Function

- ☆ Calm down the skin after RF
- ☆ Open pores before cleaning skin
- ☆ Accelerating absorption of nutrition

	Heads	Application
	40KHz Cavitation Probe (body such as abdomen, waist, hips, thigh, leg)	Full body shaping, eliminate cellulite tissue, dissolve fatness, weight loss
	Big LED Photon Probe (for forehead, face, neck)	Stimulates collagen production which smoothes fine lines and wrinkles Reduces hyperpigmentation and age spot Reduces pore size, acne scars
	Small LED Photon Probe (for forehead, face, neck)	Stimulates collagen production which smoothes fine lines and wrinkles Reduces hyperpigmentation and age spot Reduces pore size, acne scars
	Big Vacuum RF Probe (body such as abdomen, leg back, waist, hips, thigh)	Lift and stimulation of the underlying structures Improving blood flow and lymph circulation Tightening skin stretch marks
	Small Vacuum RF Probe (for forehead, face, neck)	Lift and stimulation of the underlying structures Improving blood flow and lymph circulation Tightening skin stretch marks

	Heads	Application
	<p>Bipolar RF Probe (for eyes's around)</p>	<p>Eye's around for wrinkle removal,eyes' puffine,dark circle,eye pouch</p>
	<p>Tripolar RF Probe (for forehead,face,neck)</p>	<p>Face & neck lifting ,remodeling Tightening & lifting flaccid areas Reduces wrinkles ,lift sagging skin Enhances luminosity of the skin</p>
	<p>Sextupole RF Probe (body such abodmen,back, waist,hips,thigh,leg)</p>	<p>Fat reduction,body remodeling Cellulite treatment and skin partial reconstruction Increase collagen level Tightening loose skin</p>
	<p>10 Polar RF Probe (body such abodmen,back, waist,hips,thigh,leg)</p>	<p>Fat reduction,body remodeling Cellulite treatment and skin partial reconstruction Increase collagen level Tightening loose skin</p>
	<p>Arc RF Probe (for shoulder,arm)</p>	<p>Fat reduction,body remodeling Cellulite treatment and skin partial reconstruction Increase collagen level Tightening loose skin</p>

Product Structure

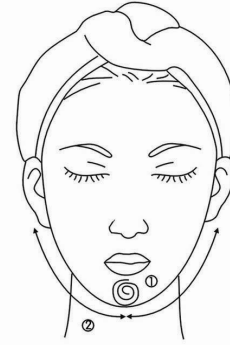


OPERATION

FACE

Treated time: 30 minutes

1. Massage the mandible center in circles to produce deep heat.



2. Massage lower jaw in lines.

3. Massage the triangle zone of both sides of the face in circles.



4. Massage from jaw to angulus oris to ear in lines.

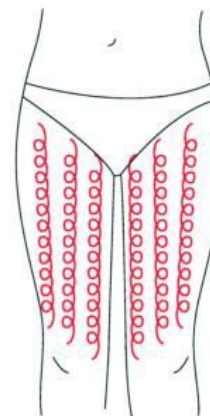
THIGH

Treated time: 30 minutes

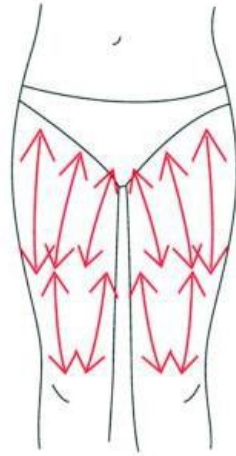
1. From down to upper, pushing to the groin to dredge the lymph.



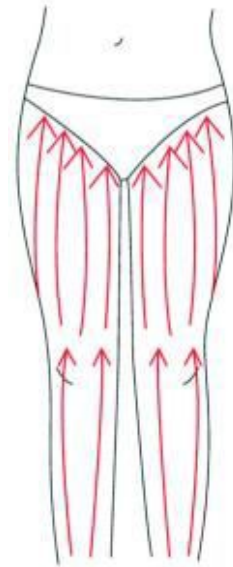
2. From down to upper, circling push by anticlockwise can help decomposing fatness.



3. Also can push by come-and-go to decompose fatness.

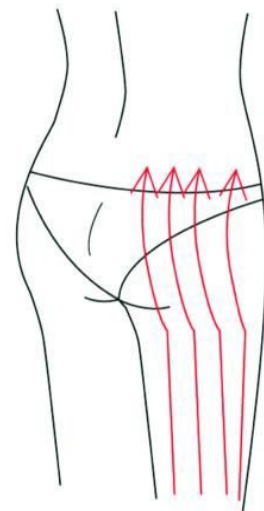


4. Pull from the knee and muscle texture to upper, can improve the curve.



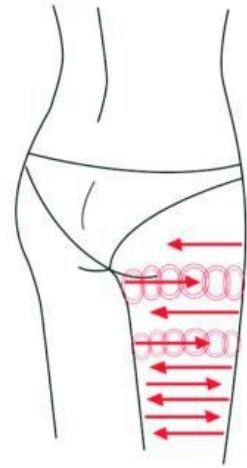
Treated time: 20 to 30 minutes

1. Along the lymph direction, pulling to the waist.



2. From upper to down, by anticlockwise gesture, pull come-and-go.

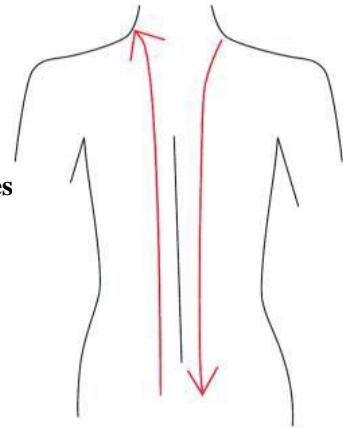
3. Along the muscle of arm, pull up to lift and tight the muscle.



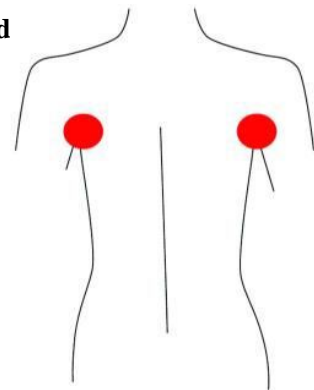
BACK

Treated time: 20 to 30 minutes

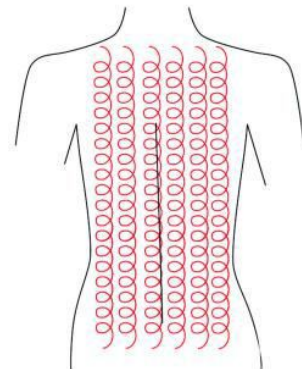
1. First by come-and-go, pushing the bladder nerve 2 to 3 times



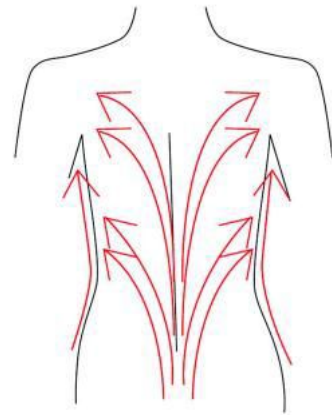
2. Circling by anticlockwise to stimulate the underarm lymph nod



3. On the back, by anticlockwise circling, can help to decompose the fatness.



4. Using lymph drainage gesture, pull the toxin to the lymph node, can help improving the back curve.



ARM

Treated time: 30 minutes

BACK SIDE

1. From the inner elbow to the armpit, doing lymph drainage.



2. Circling to stimulate the lymph node.



3. By anticlockwise or come-and-go pushing, decomposing the fatness.



4. From the elbow to the outer, doing tightening gesture.

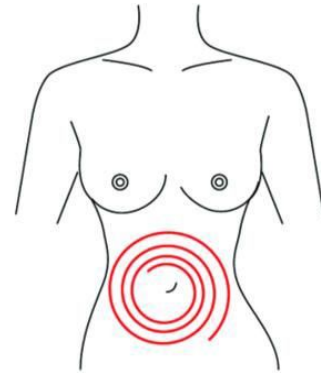
Facade

1. From the elbow to the outer, doing tightening gesture.

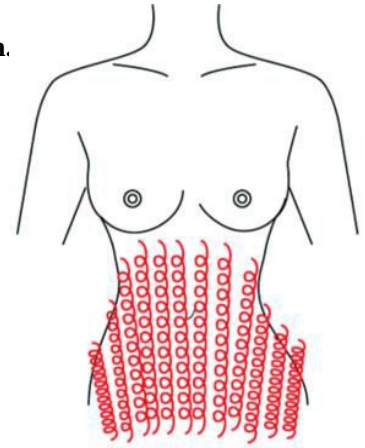
Abdomen

Treated time: 20 to 30 minutes

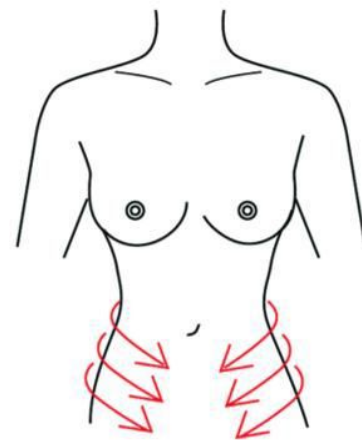
1. From small to large, by clockwise direction, circling around the navel, can help peristalsis of the large intestine.



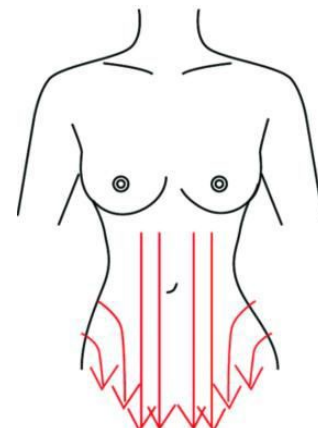
2. From small to large, by anticlockwise direction, circling push down.



3. From the belly and muscle texture, pull to the groin.



4. Through lymph drainage gesture, taking the toxin to the place of groin.



Attention:

1. Pregnant women or women during in menses.
2. Epileptic.
3. Patients with malignancy.
4. Patient whose wound after operation has not healed up.
5. Acute inflammation or epidemical patients.
6. Whom with heart diseases or with heart pacemaker.
7. Who with kidney (gall-stone) disease.
8. Who was embedded metal object or silica gel.
9. Who in menses, birth control period, emiction incontinence period, or accepting the belly operation.
10. Whose body always takes much inner hot.
11. Who has the genetic hypersensitivity.

Notice:

1. Be sure to use the special ultrasonic gel.
2. Avoid knocking the us head.
3. For avoiding burning the head, during operation, please prepare enough ultrasonic gel.
4. Don't stay in one place, avoid treating on the bone.
5. Don't use disinfectant product to disinfect the us head. We suggest the wet cotton or dry towel enough.
6. Check the machine power cord if it is connected well.
7. If the machine will not use for a long time, please switch off it, and power off.
8. Please take off all metal decoration from the operator and patient's body.
9. If continuous using 1 hour, please pause the machine about 10 minutes, then using again.
10. During the operation, be sure not to accept other treatment.