

iWand

The magic wand for a better life.



User Manual

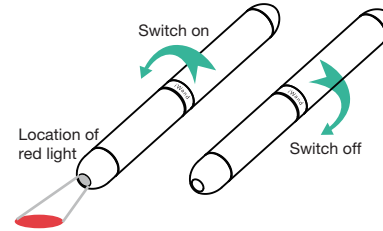
INTRODUCTION

The *iWand* is a powerful and portable non-contact device, utilizing the *Euphoria Technology* working with the *Proton Vibration Alignment Field (PVA Field)* to strengthen the microcirculation of the body. The *iWand* relieves pain, boosts immunity, promotes metabolism and enhances external fluid absorption.

Features

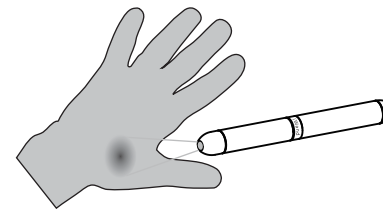
- Speeds up external fluid or ointment absorption into skin and deeper tissues.
- Relieves many types of pains like headaches, neck and shoulder pain, back pain, knee pain, arthritis, muscle aches, menstrual pain, indigestion, insomnia, skin allergies and other chronic conditions.
- Immediate improvement of microcirculation.
- Enhances immunity.
- Promotes metabolism.
- Quick recovery from fatigue and pain caused by poor microcirculation.
- Non-invasive acupuncture.
- Applicable for all areas including infected skin, wounds and areas covered with hair.
- Free from stimulus response and allergic reaction.
- Contactless.
- No side effects.
- Completely safe and easy to use.
- General health care with daily use.

OPERATION



1. Select the targeted skin area. This might be an area covered with external fluid, a pain area or specific acupoint. Turn on the *iWand*. The red light will start to flash. Aim the flashing red light onto the selected location.

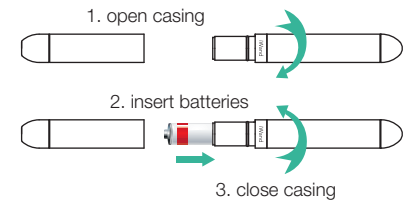
Suggested usage duration:
 Absorption purpose - 1 minute
 Healthcare purpose - 5 minutes
 Pain relief purpose - 10 minutes



2. Point the *iWand* to the selected area within an inch.
3. When finished, turn off *iWand* until red light is switched off.

BATTERY REPLACEMENT

1. Turn *iWand* in counter clockwise direction to open the casing.
2. Insert two 1.5V AAA size batteries. Use Alkaline batteries only. Do not use rechargeable batteries.
3. Turn center part of *iWand* in clockwise direction to close the casing. Avoid turning *iWand* too tight as you would turn on the *iWand*.



PACKAGING

1. *iWand* 1 pc
2. Pouch 1 pc
3. User Manual 1 pc
4. 1.5V AAA batteries 2 pcs



INNOWORKS PRODUCT CREATION LTD.
www.ipchealth.com

PRODUCT INFORMATION

Carefully review the following information for proper and safe application of the *iWand*.

Cautions

- Stop using *iWand* in case you feel any discomfort.
- Children or persons who are unable to express themselves, should seek medical advice before use; children must be accompanied by adults when using *iWand*.
- For battery operation, *iWand* works only with 1.5V AAA size battery. Do not use rechargeable batteries.
- Clean *iWand* with a dry towel. Do not clean *iWand* with water, detergent, organic solvent or bleaching agent.
- Do not use *iWand* in areas of high temperature or high humidity.
- Do not open, repair, modify or remove parts of the *iWand*.
- Do not make use of components not provided along with the *iWand*. Do not drop the device or put too much pressure to the device.

Storage

- Store *iWand* in a dry environment. Do not place *iWand* in areas of high temperature, high humidity or under direct sunlight.
- Remove the batteries if *iWand* will not be used for extended period of time.

WARRANTY

Innoworks Product Creation Ltd. (IPC) warrants the *iWand* to be free from defects in material and workmanship during the 1 year warranty period from the date of purchase. Customer should present the original invoice stating the 'date of purchase', 'product serial number' and 'authorized dealer's seal' for free warranty service including free parts and labor within warranty period.

The customer could contact the local IPC distributor (For details refer to our web site) or dealer for more details about the warranty service. The device must be inspected by IPC's appointed authorized representative. The customer will be informed whether the unit can be repaired immediately or a longer repair period is required.

IPC reserves the right to determine the required repair period. The local distributor will contact the customer regarding the arrangement to collect the repaired device after service. The customer is responsible for all shipping costs and liabilities.

If additional repair cost will be incurred, the local distributor will inform the customer about the repair cost. The repair work will be carried out once confirmation from the customer is received.

If the components of a particular model are not available, the local distributor reserves the right to provide another model with similar function to the customer. The final

model to be replaced and the associated cost will be decided by the local distributor.

Importance: The warranty will become null and void if *iWand* is damaged or defective as a result of misuse, abuse, contamination, unauthorized maintenance, parts removal, damaged or rendered defective caused by incorrect input voltage or using components not provided in the product packaging. In cases where the customer has chosen another representative not appointed or authorized by IPC for repair service, the product warranty will be voided immediately.

TECHNICAL SPECIFICATIONS

Size (HxWxD) : 15x15x143 mm
0.6" x 0.6" x 5.6"

Weight : 30 grams or 1.06 ounces
without accessories

Power : two 1.5 volt AAA size
batteries

Wavelength of light output :
620 - 645 nm

Maximum power consumption :
less than 30 mW

All information provided by IPC is based on standard testing methods designed by Innoworks Product Creation Ltd. Information is subject to change without further notice.

DISCLAIMER

- This user manual has demonstrated the correct installation and operation of the *iWand*. However, IPC will not guarantee against any written mistakes or missing information in this user manual.
- IPC reserves the right to make changes without any notification on the hardware, software or accessories and the written content in the user manual.
- This user manual inclusive, must not be duplicated, stored, transmitted or translated in any other language or format without formal written authorization by IPC.
- IPC assumes no liability, obligation or responsibility for any results from the misuse of *iWand*'s hardware, software and accessories.
- IPC does not guarantee the results of *iWand*. There are many considerations of the theory of Chinese Acupuncture treatments and meridians. Therefore, the effectiveness of the *iWand* will always and only be subject to conditions of each application exclusively. Always seek the advice of your physician or other qualified health provider prior to starting any new treatment or with questions regarding a medical condition.