

IT-012U

Input Tool

User's Manual

Read this User's Manual thoroughly
before operating the instrument. After reading,
retain it close at hand for future reference.

Mitutoyo

Conventions for Describing Software Operation




Microsoft, Windows, Windows Vista and Excel are registered trademarks and/or trademarks of Microsoft Corporation in the United States and/or other countries.

CONVENTIONS USED IN USER'S MANUAL




Safety Precautions

To operate the instrument correctly and safely, Mitutoyo manuals use various safety signs (Signal Words and Safety Alert Symbols) to identify and warn against hazards and potential accidents.

- The following signs indicate general warnings:

 DANGER	Indicates an imminently hazardous situation which, if not avoided, will result in serious injury or death.
 WARNING	Indicates a potentially hazardous situation which, if not avoided, could result in serious injury or death.
 CAUTION	Indicates a potentially hazardous situation which, if not avoided, may result in minor or moderate injury or property damage.

- The following signs indicate specific warnings or prohibited actions, or indicate a mandatory action:

	Alerts the user to a specific hazardous situation. The given example means "Caution, risk of electric shock"
	Prohibits a specific action. The given example means "Do not disassemble"
	Specifies a required action. The given example means "Ground".

CONVENTIONS USED IN USER'S MANUAL

On Various Types of Notes

The following types of notes are provided to help the operator obtain reliable measurement data through correct instrument operation.

-
- IMPORTANT**
- An important note is a type of note that provides information essential to the completion of a task. You cannot disregard this note to complete the task.
 - An important note is a type of precaution, which if neglected could result in a loss of data, decreased accuracy of instrument malfunction/failure.
-

NOTE

A note emphasizes or supplements important points of the main text. A note supplies Information that may only apply in special cases (e.g.. Memory limitations, equipment configurations, or details that apply to specific versions of a program).

TIP

A tip is a type of note that helps the user apply the techniques and procedures described in the text to their specific needs.

It also provides reference information associated with the topic being discussed.

Mitutoyo assumes no liability to any party for any loss or damage, direct or indirect, caused by use of this instrument not conforming to this manual.

Information in this document is subject to change without notice.

© 2002 Mitutoyo Corporation. All rights reserved.

Safety Precautions

- This user's manual provides important information on safe use of the Input Tool (IT-012U). Read the user's manual thoroughly before using this instrument. Especially, read carefully the "Precautions for Use" given at the beginning of this manual to fully understand them for better use of the instrument.
Store this manual in a safe place for future reference as necessary while the instrument is in service.
Mitutoyo has paid due attention to ensure the safe use of this instrument without any harm to the properties of the customers.
- Operate the instrument according to this manual.

Precautions for Use

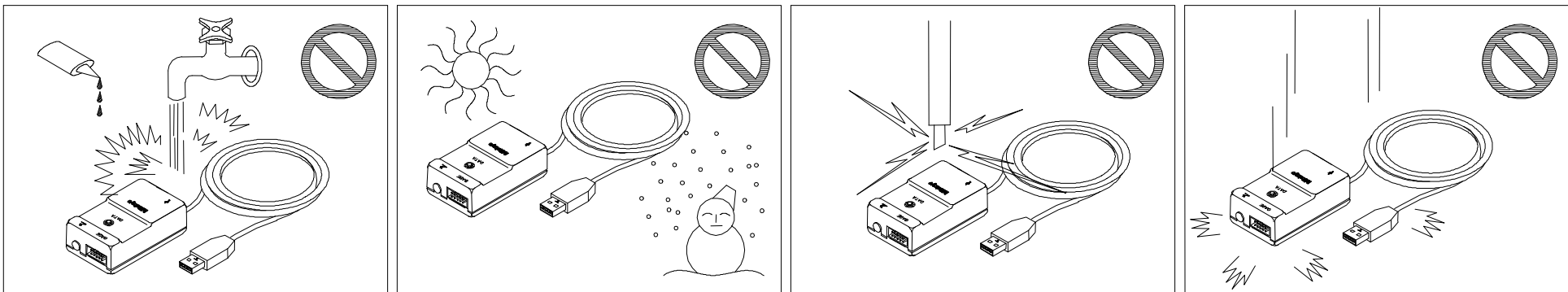
IMPORTANT To ensure safe operates with this instrument, check the following items prior to use.

The Input Tool operates with the power supplied form the PC connected. Depending on the manufacturers or models, PCs may generate significant interference noise. Be sure to check that the entire system operates normally before starting measurement. Check the system according to the following procedure.

- 1)Connect the Input tool to measuring tool and the PC (or equivalent),then turn the PC on.(It needs not to open the data input window.)
- 2)Zero set the measuring tool.(Refer to the respective User’s Manual)
- 3)Open the measuring faces(contact point)to the point of workpiece insertion, then close them to the original zero point. Check to be sure that the measuring tool displays zero.
- 4)Repeat step 3 for 5 times. If the measuring tool repeats zero for each time, you may safely use the system for measurement.
- 5)In the event that the instrument malfunction should result, please contact Mitutoyo office.



- As this product is an electronic instrument, it may be damaged if it is dropped. Be careful to handle this product.
- Do not leave the Input Tool at site where it may be subjected to direct sunlight, in the car or near the heat.
- Do not use the Input Tool at site where it may be subjected to water or oil.
- Do not disassemble the Input Tool.
- If a malfunction is not solved with switches, remove the cables and connect them again.



WARRANTY

This product has been manufactured under the rigorous quality control. Should it malfunction under normal use within one year from the date of original purchase, it will be repaired or replaced, at our option, free of charge. Contact your dealer or the nearest Mitutoyo representative for more information.

However, the following damages may be subject to a repair charge even if damage occurs within the warranty period:

1. Unit malfunction or damage arising from improper handling, or unauthorized retrofit or repair by the user.
2. Unit malfunction or damage as the result of moving, dropping, or transporting after purchase.
3. Unit malfunction or damage due to fire, salt, gas, abnormal voltage, or natural catastrophe.

This warranty is not transferable and is only valid within the country of the original purchase.

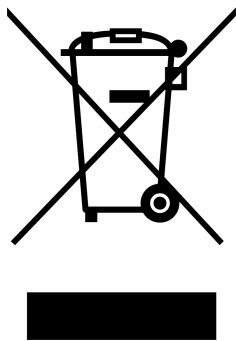
CONVENTIONS USED IN THIS MANUAL

Safety Precautions

To ensure that instruments are operated correctly and safely, Mitutoyo manuals use various safety symbols (Signal Words and Safety Alert Symbols) to identify and warn against hazards and potential accidents.

The following signs indicate **general** warnings:

Disposal of Old Electrical & Electronic Equipment (Applicable in the European Union and other European countries with separate collection systems)



This symbol on the product or on its packaging indicates that this product shall not be treated as household waste. To reduce the environmental impact of WEEE (Waste Electrical and Electronic Equipment) and minimize the volume of WEEE entering landfills, please reuse and recycle.
For further information, please contact your local dealer or distributors.

CONTENTS

CONVENTIONS USED IN USER'S MANUAL i

Safety Precautions..... iii

Precautions for Useiv

WARRANTY v

Disposal of Old Electrical & Electronic Equipment vi

CONTENTSvii

1 Introduction.....1-1

1.1 About the Input Tool1-1

1.1.1 Applicable models.....1-1

1.1.2 Name and function of each part.....1-1

1.1.3 System connection method1-2

1.1.4 Data acquisition method1-3

2 Driver Installation2-1

2.1 Driver Installation2-1

2.1.1 Installing the drivers on Windows 982-1

2.1.2 Installing the drivers on other Windows Operating System2-4

2.2 Confirming the Connection2-5

2.2.1 Confirming the connection on Windows 98 or Windows Me.....2-5

2.2.2 Confirming the connection on Windows 2000 or Windows XP2-7

2.2.3 Confirming the connection on Windows Vista or Windows 72-9

3 Specifications3-1

3.1 Specifications3-1

3.2 Table1 List of Digimatic (SPC) Cables.....3-2

Service Network

MEMO

1

INTRODUCTION

This chapter describes the procedures of Inputtool connection and operation.

1.1 About the Inputtool

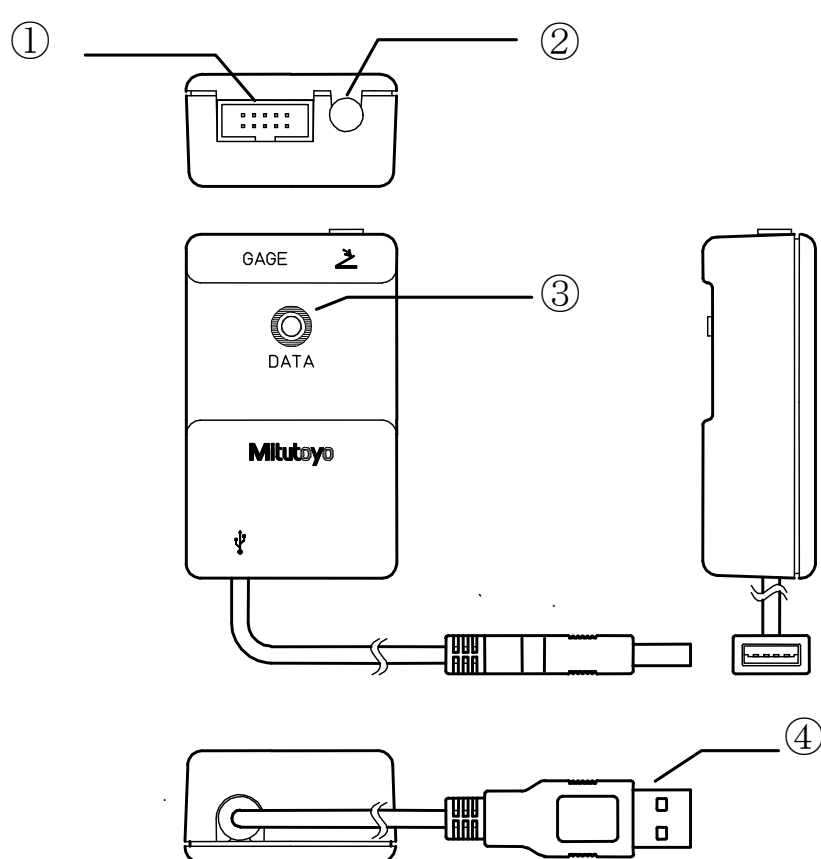
This instrument is featured with the following:

- Measuring instrument data can be inputted by means of spread sheet calculation software. (including Microsoft Excel)
- Dedicated software or drivers are not required if this is connected to a USB Port.

1.1.1 Applicable models

- The Inputtool can be used with a personal computer equipped with a USB port and operating on the Windows Operating System of Windows 98 or later.

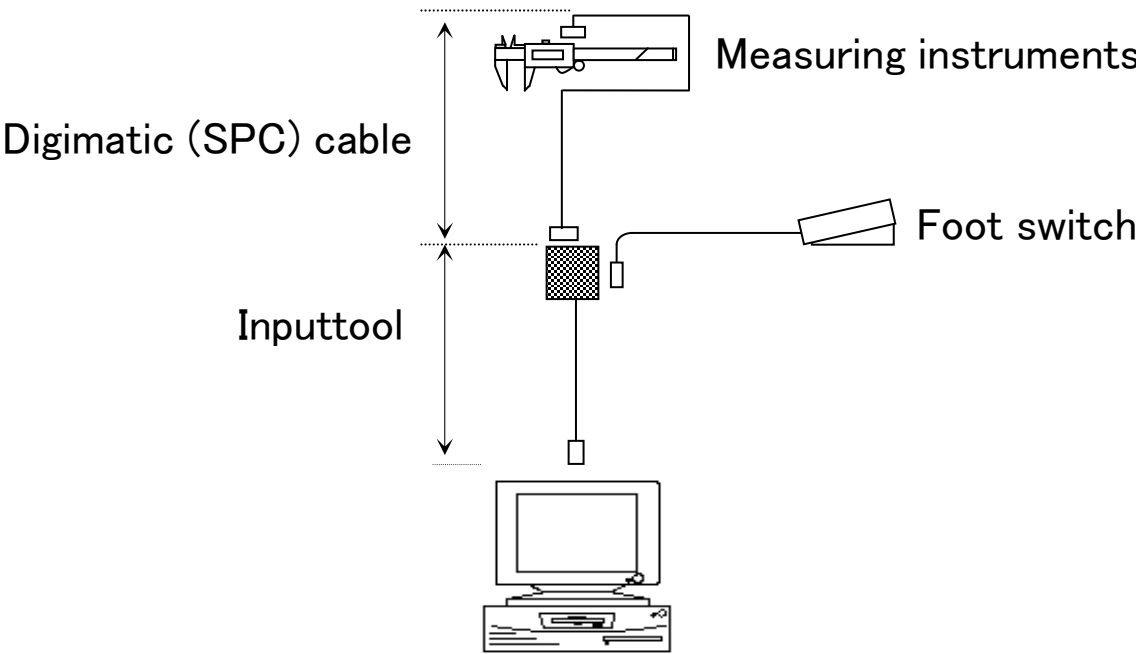
1.1.2 Name and function of each part



- ① Digimatic (SPC) 10-pin connector
: For connection with the Digimatic (SPC) cable.
- ② Foot switch jack
: For connection with the foot switch No.937179T (Optional).
- ③ DATA button
: Press to acquire data.
- ④ USB A connector
: For connection with the USB port or USB hub of your personal computer.

1.1.3 System connection

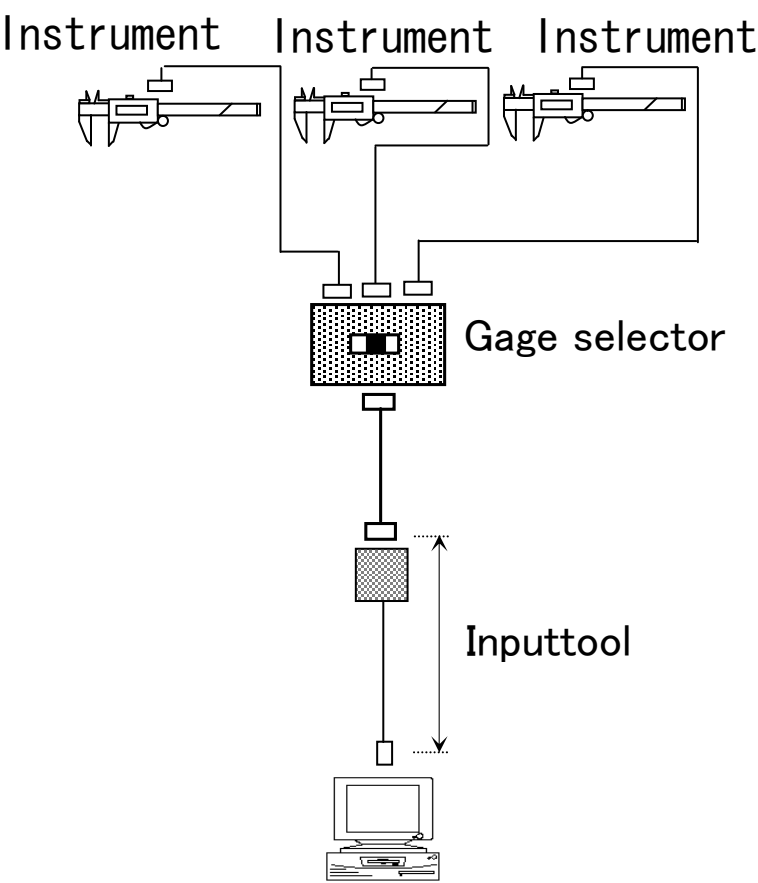
1) Ordinary connection method



CAUTION

- To connect measuring instruments to the Inputtool, use Mitutoyo original Digimatic (SPC) cables.
- For more information about a SPC cable, refer to section 3.2 “Table1 List of Digimatic (SPC) cables”
- The foot switch (order No.937179T) is optionally available.

2) Connections for multiple measuring instruments



Note Three kinds of instruments with a Digimatic data output can be connected by using the Gage Selector (order No.: 939039).

1.1.4 Data acquisition method

- Press the DATA button provided on the measuring instrument, Digimatic(SPC) cable, or Inputtool main unit so the data can be read in to the personal computer.
- The data can be read directly by software, including Microsoft Excel.

-
- NOTE**
- Target cells and direction of data input should be determined on each piece of software.
 - This instrument may not be operated properly depending on the personal computer.
 - Pressing the DATA button of the Inputtool while is being rebooted from the suspended state with it connected with a personal computer may disable data output. If this is the case, disconnect this instrument from the personal computer once, then connect them again.
 - When data needs to be output continuously, take an interval about one second.
-

MEMO

2

Driver Installation

This chapter describes the driver installation procedures.

2.1 About the Driver Installation

2.1.1 Installing the drivers on Windows 98.

- 1) Connect the cable supplied with the Input Tool to the USB port or USB Hub of the personal computer.
- 2) The Add New Hardware Wizard appears. Click the [Next>] button.



- 3) With the following screen displayed, select the “Search for the best drive for your device. (Recommended)” radio button, then click the [Next>] button.



- 4) After the display has been changed to the following, uncheck all check boxes, then click the [Next>] button.



- 5) With the following screen displayed, click the [Next >] button.
Driver installation will start.



NOTE The Windows 98 CD-ROM may be required during copying files by the system depending on the personal computer used. If this is the case, set the CD-ROM in the computer and follow the instructions given on the screen.

- 6) After completion of file copy, the following screen will be displayed. Click the [Finish] button.



2.1.2 Installing the drivers on other Windows operating systems.

Connecting the Input Tool with a personal computer with the supplied cable will automatically install the drivers. No particular operation is required.

NOTE If the Input Tool IT-012U is connected, the Japanese-version 106/109 keyboard of Windows 2000-based machine may sometimes operate as an English 101 keyboard. This problem is unique to Windows 2000 and will be addressed as shown below:

Example of phenomena:

Key stroke	106/109 Japanese keyboard	101 English keyboard
Shift + 2	“	@
Shift + 8	(*
Shift + 9)	(

A solution for this problem is installing the Service Pack2 of Windows 2000. With the Service Pack2 installed, the Japanese 106/109 keyboard will not change its key arrangement even when the IT-012U is connected.

If the keyboard has already been changed to the English 101 keyboard in key arrangement, use the following procedures to restore the original state:

To restore to the Japanese 106/109 keyboard, use the Device Manager as follows:

- 1) From the Keyboard menu in the Device Manager, double-click [Standard 101/102-Key or Microsoft Natural Keyboard].
- 2) Select the [Driver] tab, then click the [Renew Driver] button.
- 3) Following the Wizard, check “Show the list of known drivers of this device to select a driver”, then click [Next>] button.
- 4) Check “Show all hardware of the devices of this class”, select [Japanese 106/109 keyboard], then click [Next>] button.
- 5) Follow the Wizard to renew the driver and restart the personal computer.

Windows 2000 Service Pack 2 is available from the Microsoft Web Site. Refer to the Windows Update page.

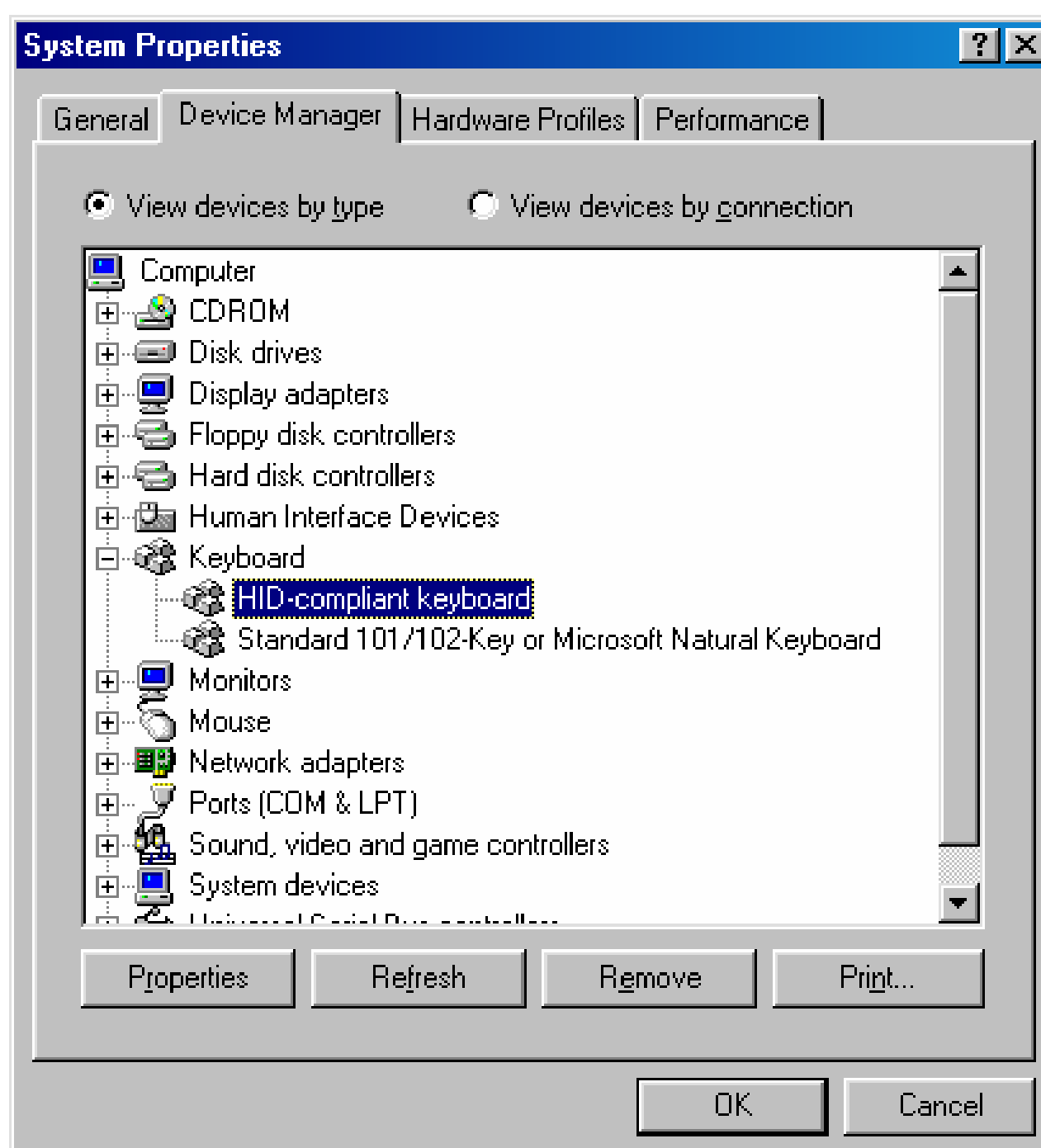
For more information about the Service Pack, contact the Microsoft Corporation.

2.2 Confirming the Connection

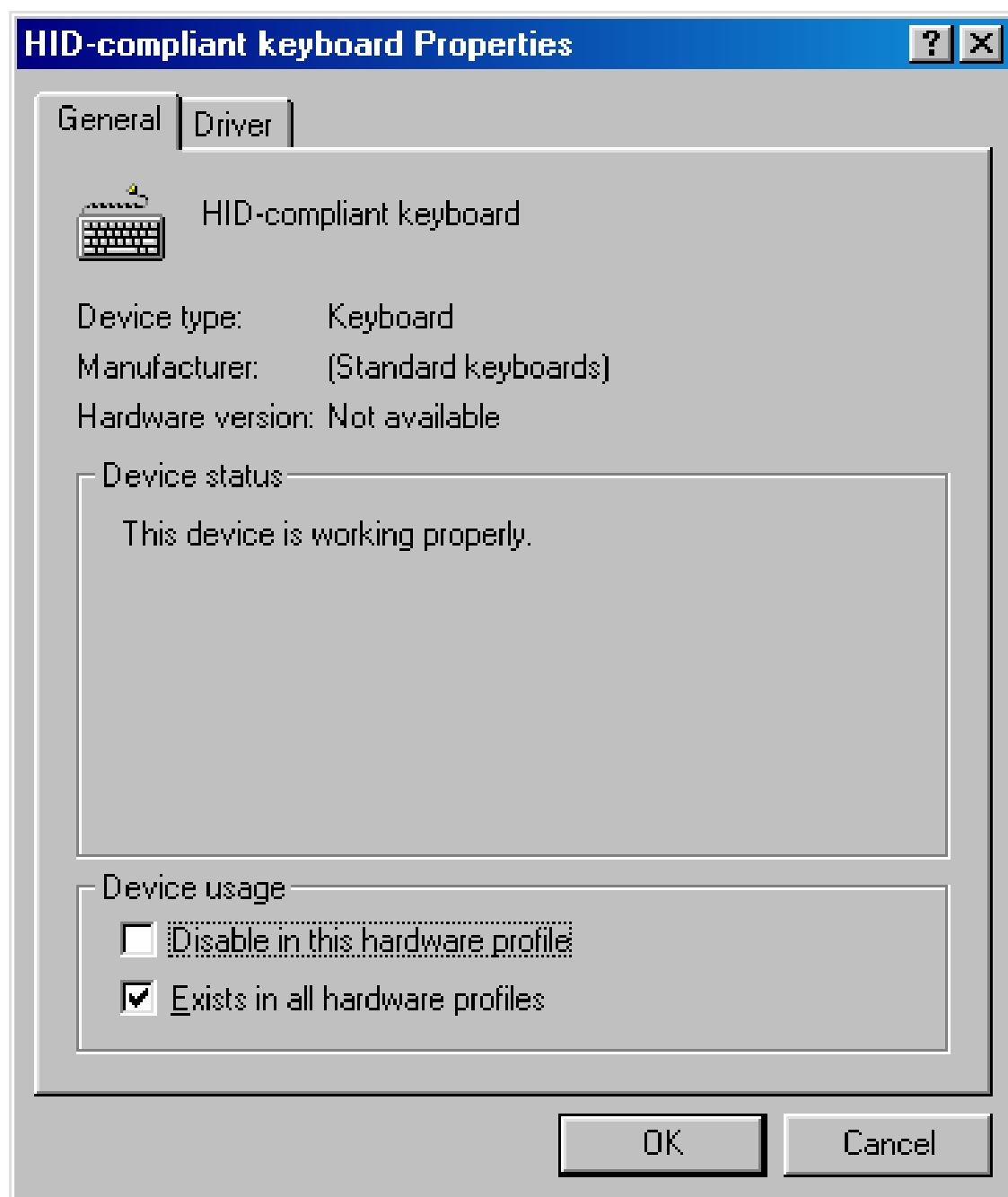
This section describes the procedure for confirming whether the Input Tool is properly connected.

2.2.1 Confirming the connection on Windows 98 or Windows Me

- 1) Click the [Start] button, choose the [Settings] menu, then click [Control Panel] to open it.
- 2) From [Control Panel] open the [System] icon, then select the [Device manager] tab.
- 3) The following screen will be displayed. Open the [Keyboard] menu, then select [HID-compliant keyboard].
- 4) Click the [Properties] button.

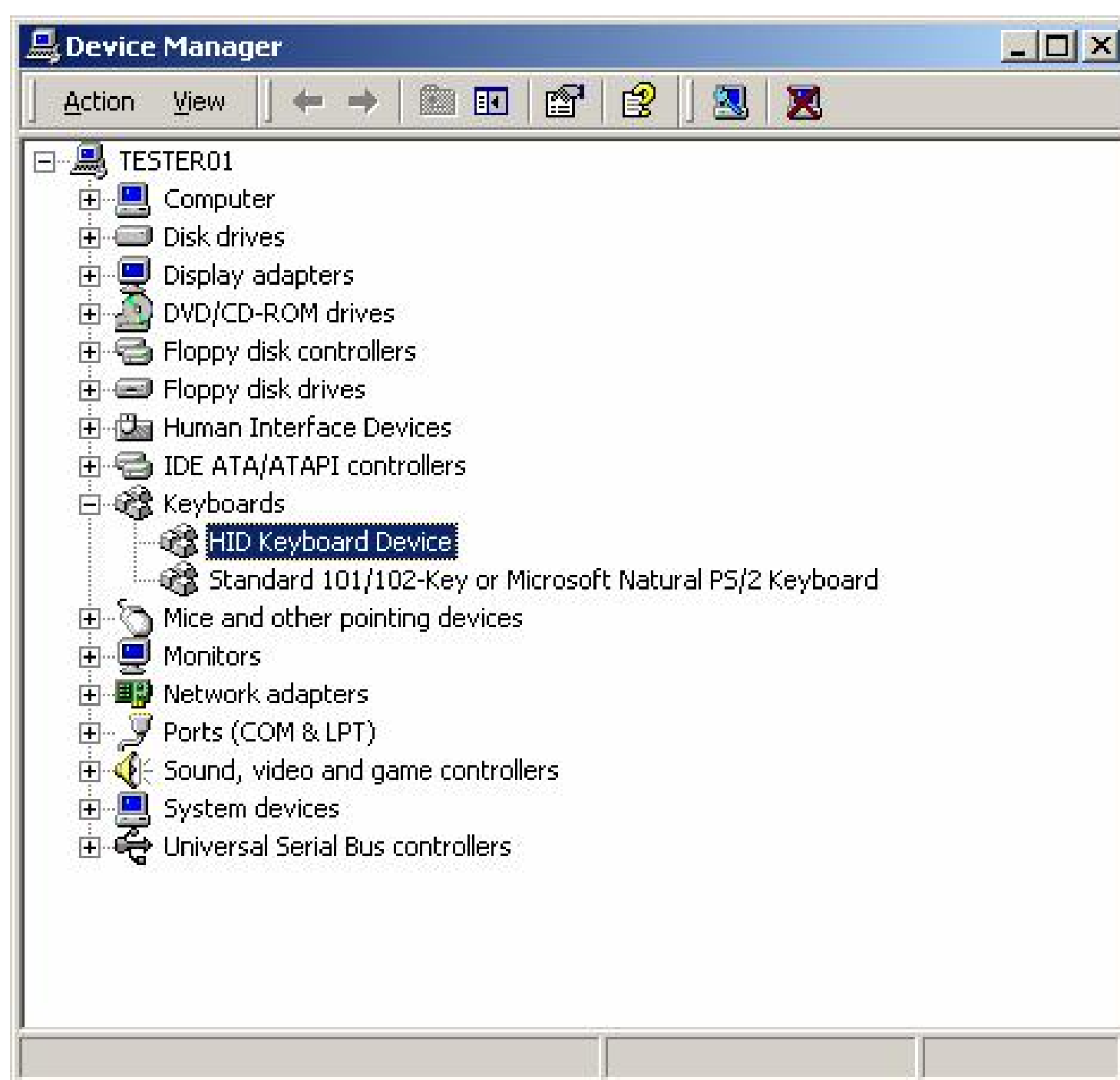


- 5) The [HID-compliant keyboard Properties] dialog will be displayed. Connection is satisfactory if the Device status message shows “This device is working properly”.

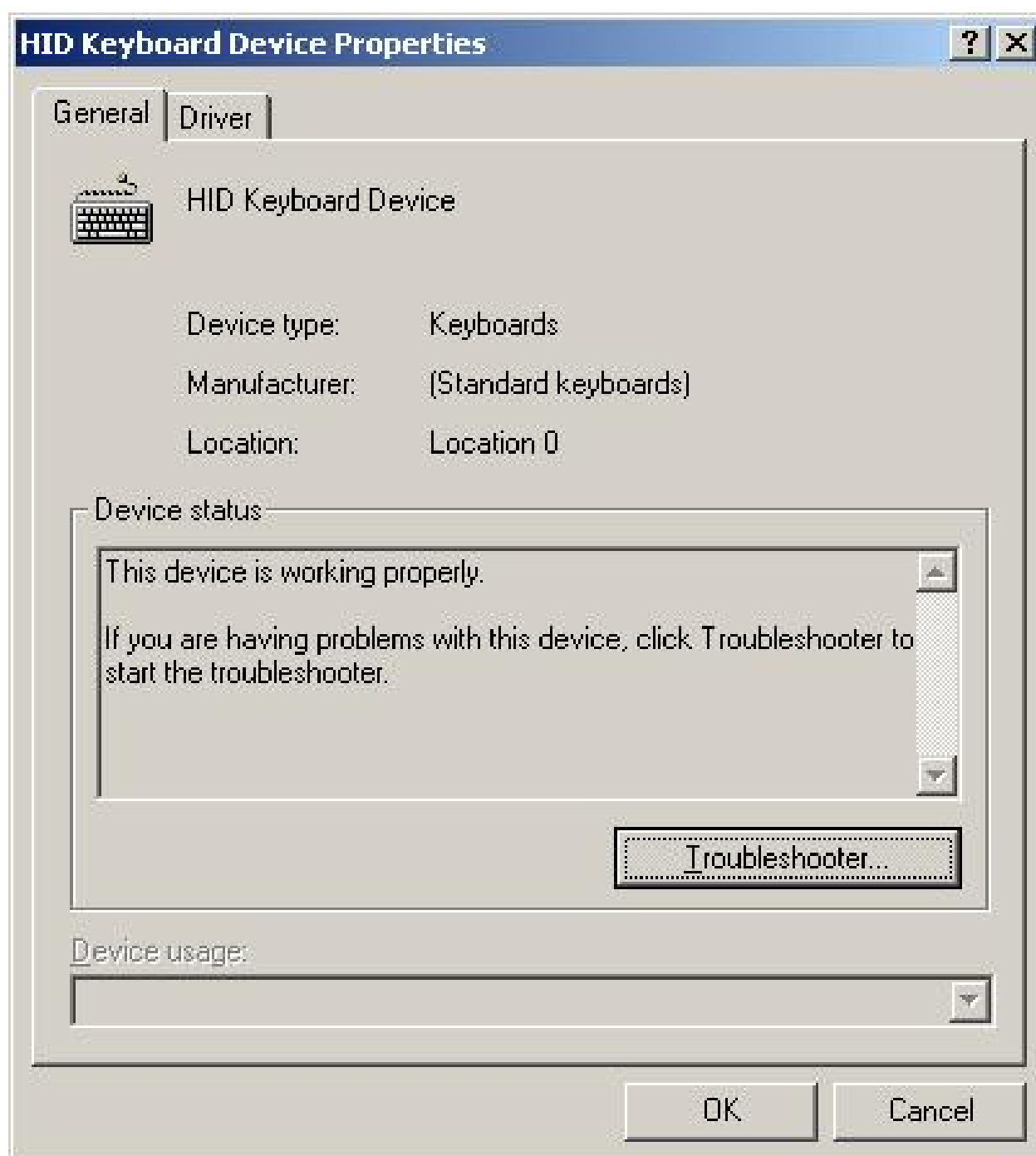


2.2.2 Confirming the connection on Windows 2000 or Windows XP

- 1) Click the Windows [Start] button, choose the [Settings] menu, then click [Control Panel] to open it. (In case of Windows XP, open [Control Panel] immediately after clicking the [Start] button.)
- 2) From [Control Panel] open the [System] icon, then select the [Hardware] tab to open [Device manager].
- 3) The following screen will be displayed. Open the [Keyboard] menu, then select [HID Keyboard Device].
- 4) Click the [Properties] on the [Operation] menu.

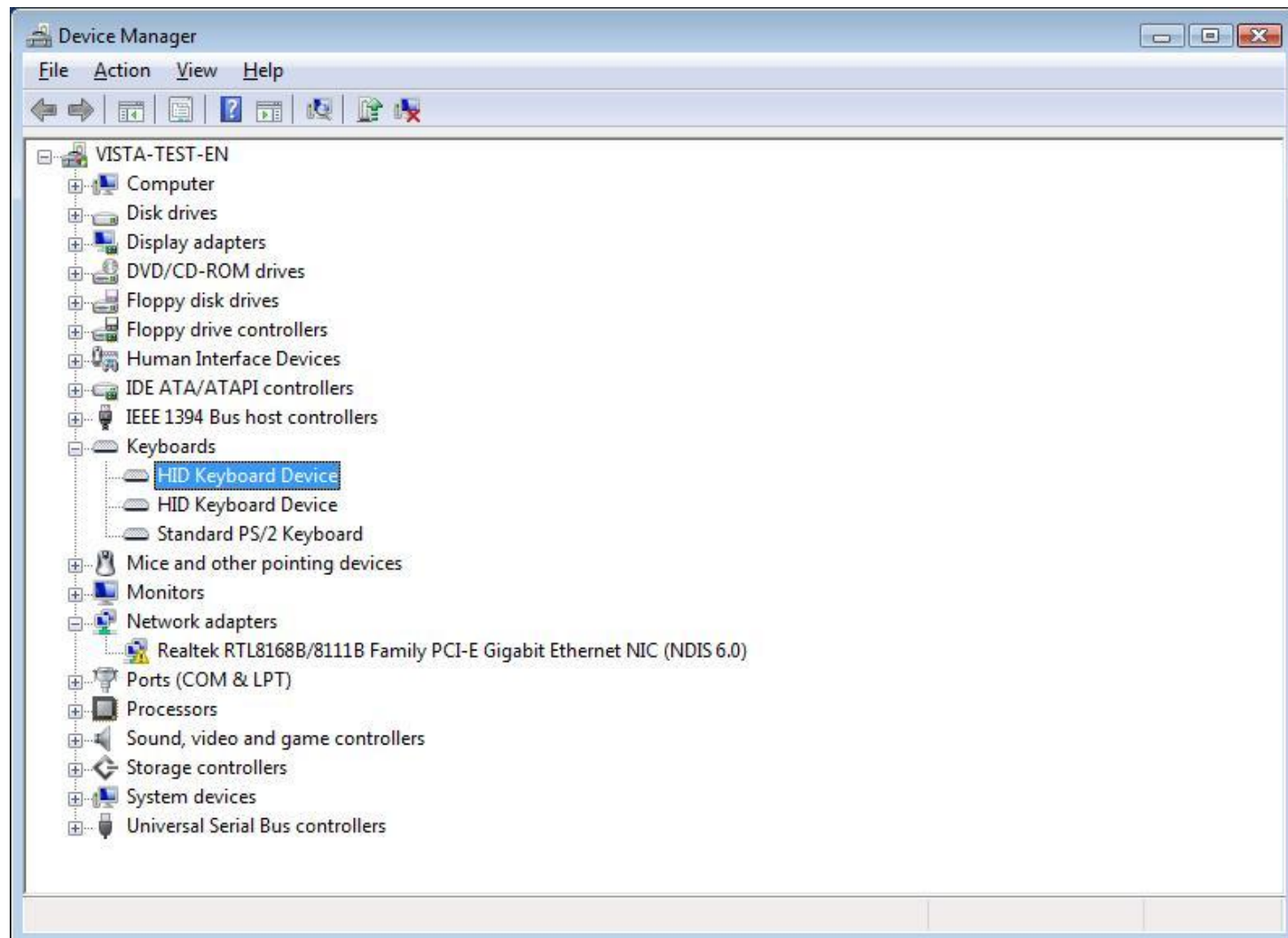


- 5) The [HID keyboard Device Properties] dialog will be displayed. Connection is satisfactory if the Device status message shows “This device is working properly”.

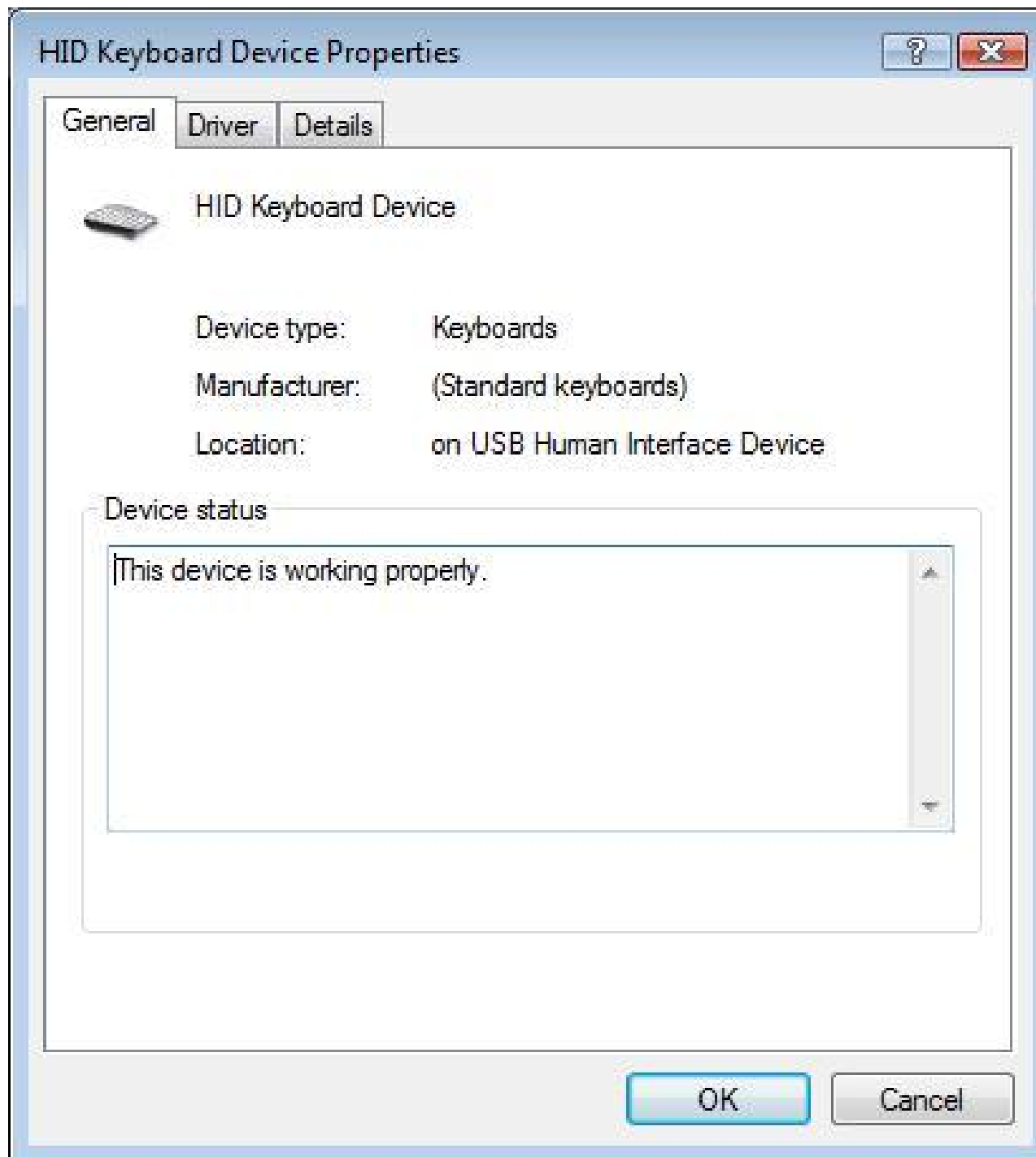


2.2.3 Confirming the connection on Windows Vista or Windows 7

- 1) Click the Windows button, and click [Control Panel] to open it.
- 2) Click [Hardware and Sound] item, then open [Device manager].
- 3) The following screen will be displayed. Open the [Keyboards] node, then select [HID Keyboard Device].
- 4) Click the [Properties] on the [Action] menu.



- 5) The [HID keyboard Device Properties] dialog will be displayed. Connection is satisfactory if the Device status message shows “This device is working properly”.



3

Specifications

This chapter describes the specifications of each part of the Input Tool.

3.1 Specifications

Power supply	:	+5V from the personal computer via the USB connector
Compatible OS	:	Windows 98, Windows 98SE, Windows 2000, Windows Me, Windows XP, Windows Vista, Windows 7, Pocket PC 2002, Windows Mobile 2003, Windows Mobile 2003 SE, Windows Mobile 5.0, Windows Mobile 6, Windows Mobile 6.1, Windows Mobile 6.5
Connector standard	:	USB A Connector
External dimensions	:	W44.0mm × D77.0mm × H23.5mm (Main unit)
Cable length	:	900mm
Mass	:	61g
Operation temperature	:	0°C ~ 40°C
Storage temperature	:	-10°C ~ 60°C
Applicable standards	:	<div>•USB-IF certified</div> <div>•CONFORMANCE TO EC DIRECTIVES</div> <div>This system conforms to the following</div> <div>EC Directive: 2004 / 108 / EC</div> <div>Standard: EN61326-1:2006</div> <div>Immunity test requirement: Clause 6.2 Table 2</div> <div>Emission limit : Class B</div>

3.2 Table 1 List of Digimatic (SPC) Cables

Connector type	Cable length: Part No.	Applicable Digimatic measuring instrument (with output)	
		Series No.	Product name.
1) Flat, Straight	1m:905338 2m:905409	192 500 543 543	·Digimatic Height Gage HDM-A, HDM-AX, HD-AX ·Digimatic Caliper ·Digimatic Indicator IDS ·ABS Digimatic Indicator ID-C (only (1) can be used)
2) Flat, L type (back)	1m:905689 2m:905690	547 550	·Digimatic Depth Gage ·Digimatic Caliper
3) Flat, L type (right)	1m:905691 2m:905692	551 552 570	·Digimatic Caliper ·Digimatic Carbon Fiber Caliper ·Digimatic Height Gage HDS
4) Flat, L type (left)	1m:905693 2m:905694	572 574 575 811	·Digimatic Length Measuring Unit ·Heightmatic Height Gage HDF-N ·Digimatic Indicator ID-U ·Hardmatic HH-300
5) With the data load switch	1m:959149 2m:959150	500 571 572 573	·ABS Digimatic Caliper CD-C/CX ·ABS Digimatic Depth Gage VDS-DCX ·ABS Digimatic Length Measuring Unit SD (including ABS-type dedicated calipers) ·ABS Digimatic Caliper CD-SC
6) With the data load switch, Waterproof type	1m: 05CZA624 2m: 05CZA625	500 500 500 550 551 552 571 572 573	·ABS Coolant Proof Caliper CD-PM/GM ·Super Caliper CD-S_PM ·ABS Coolant Proof Caliper CD-PMX ·ABS Coolant Proof Caliper CDC-P_PMX ·ABS Coolant Proof Caliper CDN-P_PMX ·ABS Coolant Proof Carbon Fiber Caliper CFC-G/GL/GC/GU ·ABS Coolant Proof Depth Gage VDS-PMX ·ABS Coolant Proof Digimatic Scale Unit SD-G ·ABS Coolant Proof Exclusive Caliper NTD-PMX
7) With the data load switch, Waterproof type	1m: 05CZA662 2m: 05CZA663	293 293 293 314 329 343 345 350 369 406 422 468	·QuantuMike MDE-MJ ·Coolant Proof Micrometer MDC-MJ/MJT ·Coolant Proof Exclusive Micrometer (The end of the mark is -MJ/MJB) ·Digimatic Exclusive Micrometer VM-M ·Digimatic Exclusive Micrometer DMC-M ·Digimatic Exclusive Micrometer OMP-M ·Digimatic Exclusive Micrometer IMP-M ·Coolant Proof Digimatic Micrometer Head MHN-MJ/MJN ·Digimatic Exclusive Micrometer PDM-M ·Digimatic Exclusive Micrometer OMV-M ·Digimatic Exclusive Micrometer BLM-M ·Digimatic Holtest HTD

Connector type	Cable length: Part No.	Applicable Digimatic measuring instrument (with output)	
		Series No.	Product name.
8) Round type (6-pin)	1m:937387 2m:965013	121	·Digimatic Bench Micrometer BD
		164	·Digimatic Micrometer Head MHD-M/CM
		227	·Adjustable Measuring force Digimatic Micrometer CLM
		227	·Digimatic Disk Micrometer CLM-DK
		227	·Digimatic Micrometer Head CLM-MH
		293	·Quickmike
		293	·Digimatic Micrometer MDC
		329	·Digimatic Depth Micrometer DMC-DM
		337	·Digimatic Inside Micrometer Extension Rod Type IMZ-M
		339	·Digimatic Inside Micrometer Extension Pipe Type IMJ-M
		345	·Digimatic Inside Micrometer Caliper Type IMP-DM
		350	·Digimatic Micrometer Head MHN-DM/M/CM (including ABS-type dedicated calipers)
		468	·Digimatic Micrometer Holtest HTD
		515	·Digimatic Height Master HME
		568	·Borematic SBM-C
		810	·Hardness Testers HM-100/200, HV-100, HR-500, HH-411
9) Plain type (10-pin)	1m:936937 2m:965014	174	·KC Counter (with Digimatic code output)
		178	·Surftest SJ-201/301/401, SV-400
		179	·Digiderm DGE
		211	·Roundtest RA-112/122
		211	·Roundtest RA-300/400 (with dedicated electronic analysis unit)
		302	·Precision Profile Projector PJ-3000
		303	·Precision Profile Projector PJ-500
		318	·Litematic VL
		515	·Digital Cera-Height Master HMD
		518	·Linear Height QMH-S
		519	·Digital Mu-Checker
		542	·Linear Gage Counter EB, EC-D, EF
		543	·Digimatic Indicator ID-F/H
		544	·Laser Scan Micrometer LSM
10) Flat, Straight Waterproof type	1m: 21EAA194 2m: 21EAA190	543	·ABS Digimatic Indicator ID-N, ID-B

* The appearance, specification, and price of the Digimatic (SPC) cables may be subject to change for improvement without notice.

MEMO

SERVICE NETWORK

Mitutoyo America Corporation

M³ Solution Center Illinois
945 Corporate Blvd., Aurora, IL. 60502 U.S.A.
TEL: (630) 820-9666 FAX: (630) 820-2614

M³ Solution Center Michigan
44768 Helm Street, Plymouth, MI 48170, U.S.A.
TEL: (734) 459-2810 FAX: (734) 459-0455

M³ Solution Center California
16925 E. Gale Ave., City of Industry, CA 91745, U.S.A.
TEL: (626) 961-9661 FAX: (626) 333-8019

for Advanced Technical Support Service

M³ Solution Center Ohio:
TEL: (513) 754-0709 FAX: (513) 754-0718

M³ Solution Center Massachusetts:
TEL: (978) 692-8765 FAX: (978) 692-9729

M³ Solution Center North Carolina:
TEL: (704) 875-8332 FAX: (704) 875-9273

Mitutoyo Canada Inc.

2121 Meadowvale Blvd., Mississauga, Ont. L5N 5N1, CANADA
TEL: (905) 821-1261 to 3 FAX: (905) 821-4968

Mitutoyo Sul Americana Ltda.

AV. João Carlos da Silva Borges, 1240, CEP 04726-002 Santo Amaro P.O. Box 4255 São Paulo, BRASIL
TEL: (011) 5643-0000 FAX: (011) 5641-3722

Argentina Branch
Av. Mitre 891/899 -C.P.(B1603CQI) Vicente Lopez-Pcia. Buenos Aires, ARGENTINA
TEL: (011) 4730-1433 FAX: (011) 4730-1411

Mitutoyo Mexicana S.A. de C.V.

Prol. Ind. Electrica #15 Col. Parq. Ind. Naucalpan C.P.53370, Naucalpan, Edo. de Mexico, MEXICO
TEL: 52-55-5312-5612 FAX: 52-55-5312-3380

Mitutoyo Europe GmbH

Borsigstr. 8-10, 41469 Neuss GERMANY
TEL: (02137) 102-0 FAX: (02137) 8685

Mitutoyo Polska Sp.z o.o.

ul. Minska, nr54-56, Wroclaw, POLAND
TEL: (48) 71-3548350 FAX: (48) 71-3548355

Mitutoyo Cesko s.r.o

Dubska 1626, 415 01 Teplice, CZECH REPUBLIC
TEL: (420) 417 579 866 FAX: (420) 417 579 867

Mitutoyo Hungaria Kft.

Nélochmetvölochlgyi úlocht 97. H-1124 Budapest, XII HUNGARY
TEL: (00361) 2141447 FAX: (00361) 2141448

Mitutoyo Nederland B.V.

Postbus 550, Landjuweel 35, 3905 PE Veenendaal, NETHERLANDS
TEL: 0318-534911 FAX: 0318-534913

Mitutoyo Scandinavia A.B.

Box 712, Släntvägen 6, 194 27 Upplands-Väsby, SWEDEN
TEL:(07) 6092135 FAX: (07) 6092410

Mitutoyo Belgium N.V.

Hogenakkerhoekstraat 8, 9150 Kruibeke, BELGIUM
TEL: 03-254 04 04 FAX: 03-254 04 05

Mitutoyo France S.A.R.L.

123, rue de la Belle Etoile, B.P. 50267-Z.I. Paris Nord II 95957 Roissy CDG Cedex, FRANCE
TEL: (01) 49 38 35 00 FAX: (01) 49 38 35 35

Mitutoyo France S.A.R.L., Agence de Lyon

TEL: (04) 78 26 98 07 FAX: (04) 72 37 16 23

Mitutoyo France S.A.R.L., Agence de Strasbourg

TEL: (03) 88 67 85 77 FAX: (03) 88 67 85 79

Mitutoyo Italiana S.R.L.

Corso Europa No.7, 20020 Lainate, Milano, ITALY
TEL: (02) 935781 FAX: (02) 9373290

Mitutoyo Schweiz AG

Steinackerstrasse 35, 8902 Urdorf-Zürich, SWITZERLAND
TEL: (44) 7361150 FAX: (44) 7361151

Mitutoyo (U.K.) Ltd.

Joule Road, West Point Business Park, Andover, Hampshire SP10 3UX UNITED KINGDOM
TEL: (01264) 353123 FAX: (01264) 354883

Mitutoyo Asia Pacific Pte. Ltd.

Regional Headquarters

24 Kallang Avenue, Mitutoyo Building, SINGAPORE 339415
TEL: (65) 6294 2211 FAX: (65) 6299 6666

Mitutoyo (Malaysia) Sdn. Bhd.

Mah Sing Integrated Industrial Park 4, Jalan Utarid U5/14, Section U5, 40150 Shah Alam, Selangor Darul Ehsan, MALAYSIA
TEL: (60) 3-7845 9318 FAX: (60) 3-7845 9346

Mitutoyo Thailand Co.,Ltd.

76/3, Chaengwattana Road, Anusaowaree, Bangkaen, Bangkok 10220, THAILAND
TEL: (66) 2-521 6130 FAX: (66) 2-521 6136

PT. Mitutoyo Indonesia

Ruko Mall Bekasi Fajar Blok A6&A7 MM2100 Industrial Town
Cikarang Barat Bekasi 17520 Indonesia
TEL:(62) 21-898 0841 FAX:(62) 21-898 0842

Representative Office

Vietnam (Ho Chi Minh City):

TEL: (84) 8-3517 4561 FAX: (84) 8-3517 4582

Vietnam (Hanoi):

TEL: (84) 4-768 8963 FAX: (84) 4-768 8960

Mitutoyo South Asia Pvt. Ltd.

C-122, Okhla Industrial Area, Phase-I, New Delhi-110 020, INDIA
TEL: 91-11-26372090 FAX: 91-11-26372636

Mitutoyo Taiwan Co.,Ltd.

4F., No.71, Zhouzi St, Neihu District, Taipei City114, TAIWAN, R.O.C.
TEL: (02) 8752-3266 FAX: (02) 8752-3267

Mitutoyo Korea Corporation

KOCOM Building 2F, #260-7, Yeom Chang-Dong, Kang Seo-Gu, Seoul, 157-040, KOREA
TEL: (02) 3661-5546 to 7 FAX: (02) 3661-5548

Mitutoyo (Beijing) Liaison Office

#1011, Beijing Fortune Bldg., No.5 Dong Sanhuan Bei-Lu Chaoyang District, Beijing, 100004, P.R. CHINA
TEL: 010-65908505 FAX: 010-65908507

Mitutoyo Measuring Instruments Co., Ltd.

Shanghai:

Room C 13/F, Nextage Business Center No.1111 Pudong South Road, Pudong New District, Shanghai, 200120, P.R. CHINA
TEL: 021-5836-0718 FAX: 021-5836-0717

Suzhou:

46, Bai Yu Street, Suzhou, 215021, P.R. CHINA
TEL: 0512-62522660 FAX: 0512-62522580

Tianjin:

No.16 Heiniucheng -Road, Hexi - District, Tianjin, 300210, P.R. CHINA
TEL: 022-8558-1221 FAX: 022-8558-1234

Mitutoyo Corporation

20-1, Sakado 1-chome, Takatsu-ku, Kawasaki, Kanagawa 213-8533, Japan

Phone: 81-44-813-8230 Fax: 81-44-813-8231

Home page: <http://www.mitutoyo.co.jp/global.html>