

D-Link®

Building Networks for People

Fixed Wireless Backbone

DWL-1750



- Ideal for Long Range Wireless Backbone Connection
- Rugged Outdoor Housing
- Enhanced Security with Built-in Firewall
- Point-to-Point and Point-to-Multipoint Bridging Modes

**FOR
OUTDOOR
WLAN**

**LONG
RANGE
CONNECTION**

**BUILT-IN
FIREWALL**

**SNMP
MANAGEMENT
SUPPORT**

**POWER
OVER
ETHERNET**

AirPremier® *Outdoor 2.4GHz Wireless* **Bridge/Router**

D-Link, the industry pioneer in wireless networking, now offers economical wireless outdoor solutions. The D-Link AirPremier DWL-1750 is a 2.4GHz IEEE 802.11b-compliant Wireless Bridge/Router. The DWL-1750 can operate as a point-to-point or a point-to-multipoint bridge with static routing ability to link networks in different buildings. The D-Link AirPremier DWL-1750 is ideal for broadband telecommunication providers, enterprises, store merchants and small business owners to create wireless backbone networks. It has been designed and engineered for use at manufacturing plants, industrial locations, military bases, college and high school campuses, airports, golf courses, marinas and other outdoor Wireless LAN applications.

The D-Link AirPremier DWL-1750 is designed for harsh outdoor environments. With die-cast watertight housing and a built-in lightning protector, this is a robust outdoor Wireless Bridge/Router. It includes cost-effective Power-over-Ethernet (PoE) for supplying power to the AP when a power outlet is not easily

available. And the unique outdoor remote-mounted design, makes for easy installation. With a one-meter RF cable needed between the DWL-1750 and the external antenna, the DWL-1750 is a cost-effective outdoor solution for long distance communications. D-Link also provides a variety of outdoor antennas enabling the DWL-1750 to operate up to 25 miles (40Km) in accordance with FCC regulations.

The DWL-1750 has MAC address-based access control and many other features for stronger security. With a built-in firewall, the DWL-1750 can work as a NAT inbound virtual server and provides IP based access control. Denial of Service (DoS) protection is also included with the DWL-1750 to prevent your wireless network from being hacked.

The DWL-1750 is easy to be managed by web-based user interface, Telnet, and RS-232 console configuration. SNMP (MIB I & MIB II) support also makes DWL-1750 a solid solution for enterprise wireless network managers.

AirPremier®

Outdoor 2.4GHz Wireless Bridge/Router



DWL-1750

SPECIFICATIONS

Standards:

IEEE 802.11b Direct Sequence Spread Spectrum (DSSS)

Frequency Range:

2.4-2.497MHz ISM band

Regulation Certifications

- FCC Part15
- ETSI 300/328

Signal Rate¹ & Modulation:

- 11Mbps (CCK)
- 5.5Mbps (CCK)
- 2Mbps (DQPSK)
- 1Mbps (DBPSK)

Transmit Power (excluding external antenna)

23dBm (200mW typically)

Receiver Sensitivity:

- < -84dBm @ 11Mbps
- < -90dBm @ 2Mbps

RF Connector:

Proprietary N-type (Reverse Polarity)

Interface:

- 1 ports 10Base-T/100Base-TX Ethernet for WAN/LAN
- UART for console

Protocol Supported:

- TCP/IP
- NAT/NAPT
- Virtual Server (NAT inbound server)
- DHCP client/server
- PPPoE
- Static Routing
- Ethernet Bridging

Security:

- 64/128-bit WEP (RC4)
- MAC address based access control
- 802.11b SSID hidden
- Denial Wireless 802.11b "ANY" station
- PPPoE authentication PAP/CHAP

Firewall:

- Built-in NAT firewall
- IP based Access Control
- Denial of Service (DoS) protection

Device Management:

- Web-based manager
- Console (RS-232) configuration
- SNMP MIB I & MIB II

Firmware Upgrade:

- TFTP (Transparent FTP)
- Xmodem & 1K Xmodem

Lightning Protector Surge Current:

20KA

Power Supply (PoE):

- Input: 100~240V AC 50~60Hz
- Output: -48V DC 0.7A

FCC Operating Range²:

- Up to 3.48miles (5.6Km)

Operating Temperature:

- 20~70°C (-4~158°F) in operating
- 40~80°C (-40~176°F) in storage

Humidity (non-condensing)

- 5% to 95% typical
- All-weather enclosure

Dimensions

- L = 9.57 inches (243mm)
- W = 7.87 inches (200mm)
- H = 3.03 inches (77mm)

Package Total Weight

16.53Lb (7.5kg)

Package Contents:

- DWL-1750 Unit
- Ethernet Inline Power Injector
- 1m Low Loss RF Cable
- 30m MIL-C-5015 style Ethernet Cable
- 2m Uplink RJ-45 Ethernet Cable
- 2m MIL-C-5015 style RS232 Configuration Cable
- User's Manual CD
- Mast Mounting Bracket with U-bolts
- Wall Mounting Bracket with screws

Warranty

1 Year

¹ Maximum wireless signal rate based on IEEE Standard 802.11b specifications. Actual data throughput will vary. Network conditions and environmental factors, including volume of network traffic, building materials and construction, and network overhead lower actual data throughput rate.

² Environmental factors may adversely affect wireless signal range.

Application

D-Link AirPremier™ Outdoor Products

Common Indoor 802.11b

1X

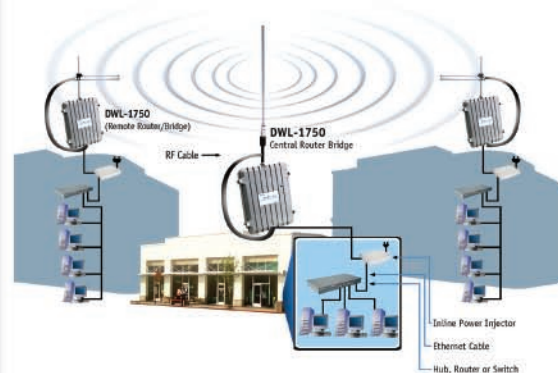
Up to 5X

Outdoor Power

With an output power of 200mW and high gain antennas, the D-Link *AirPremier* Outdoor WLAN Products can transfer data with 4-5 times more power than the common 802.11b Access Points.

Advanced Firewall Features

Built-in NAT firewall	✓
IP based Access Control	✓
Denial of Service (DoS) Protection	✓
MAC Filtering	✓
Scheduling	✓



D-Link Systems, Inc. 17595 Mt. Herrmann Street Fountain Valley CA 92708 www.dlink.com

©2004 D-Link Corporation/D-Link Systems, Inc. All rights reserved. D-Link, the D-Link logo and AirPremier are registered trademarks of D-Link Corporation or its subsidiaries in the United States and other countries. Other trademarks are the property of their respective owners. All references to speed are for comparison purposes only. Product specifications, size and shape are subject to change without notice, and actual product appearance may differ from that depicted herein. Visit www.dlink.com for more details.

D-Link®
Building Networks for People