

# User's Manual

Version 1.0 - October 2010

# Vedio.



Jobs Processing Monitoring Tool



## COPYRIGHT

EVS Broadcast Equipment – Copyright © 2010. All rights reserved.

## DISCLAIMER

The information in this manual is furnished for informational use only and subject to change without notice. While every effort has been made to ensure that the information contained in this user manual is accurate, up-to-date and reliable, EVS Broadcast Equipment cannot be held responsible for inaccuracies or errors that may appear in this publication.

## IMPROVEMENT REQUESTS

Your comments will help us improve the quality of the user documentation. Do not hesitate to send improvement requests, or report any error or inaccuracy on this user manual by e-mail to [doc@evs.tv](mailto:doc@evs.tv).

## REGIONAL CONTACTS

You will find the full list of addresses and phone numbers of local offices on the EVS website, on the following page:

<http://www.evs.tv/Europe,+Middle+East+Africa/English/Contact-us/Contact-Us/Regional-contacts-new-/page.aspx/2038>

## USER MANUALS ON EVS WEBSITE

The latest version of the user manual, if any, and other user manuals on EVS products can be found on the EVS download center, on the following webpage:

<http://www.evs.tv/Europe,+Middle+East+Africa/English/Download-center/page.aspx/1887>



# Table of Contents

---

<b>TABLE OF CONTENTS .....</b>	<b>III</b>
<b>1. INTRODUCTION.....</b>	<b>1</b>
1.1 PURPOSE.....	1
1.2 VEDIO ARCHITECTURE .....	1
<b>2. SOFTWARE INSTALLATION .....</b>	<b>2</b>
2.1 SYSTEM PREREQUISITES .....	2
2.2 RECOMMENDED CONFIGURATIONS .....	2
2.3 RECOMMENDED WEB BROWSERS .....	2
2.4 INSTALLATION.....	3
2.4.1 IIS and SQL Server installation .....	3
2.4.2 VEDIO Installation.....	10
<b>3. DATABASE MAINTENANCE.....</b>	<b>14</b>
3.1 PURPOSE.....	14
3.2 AUTOMATIC BACKUP .....	14
3.3 BACKUP DATABASE .....	15
3.4 CLEAN DATABASE .....	16
<b>4. USER'S MANUAL .....</b>	<b>17</b>
4.1 XTACCESS CONFIGURATION .....	17
4.2 USER INTERFACE .....	19
4.2.1 Overview of the Vedio Window .....	19
4.2.2 Settings.....	22
4.3 GRID DISPLAY .....	23
4.3.1 Column Order and Width .....	23
4.3.2 Columns Selection .....	23
4.3.3 Results Sorting.....	28
4.3.4 Grid Display Refresh .....	28
4.4 FILTERS .....	29
4.4.1 General Tab .....	29
4.4.2 Additional Tabs .....	32
<b>REGIONAL CONTACTS .....</b>	<b>35</b>



# 1. Introduction

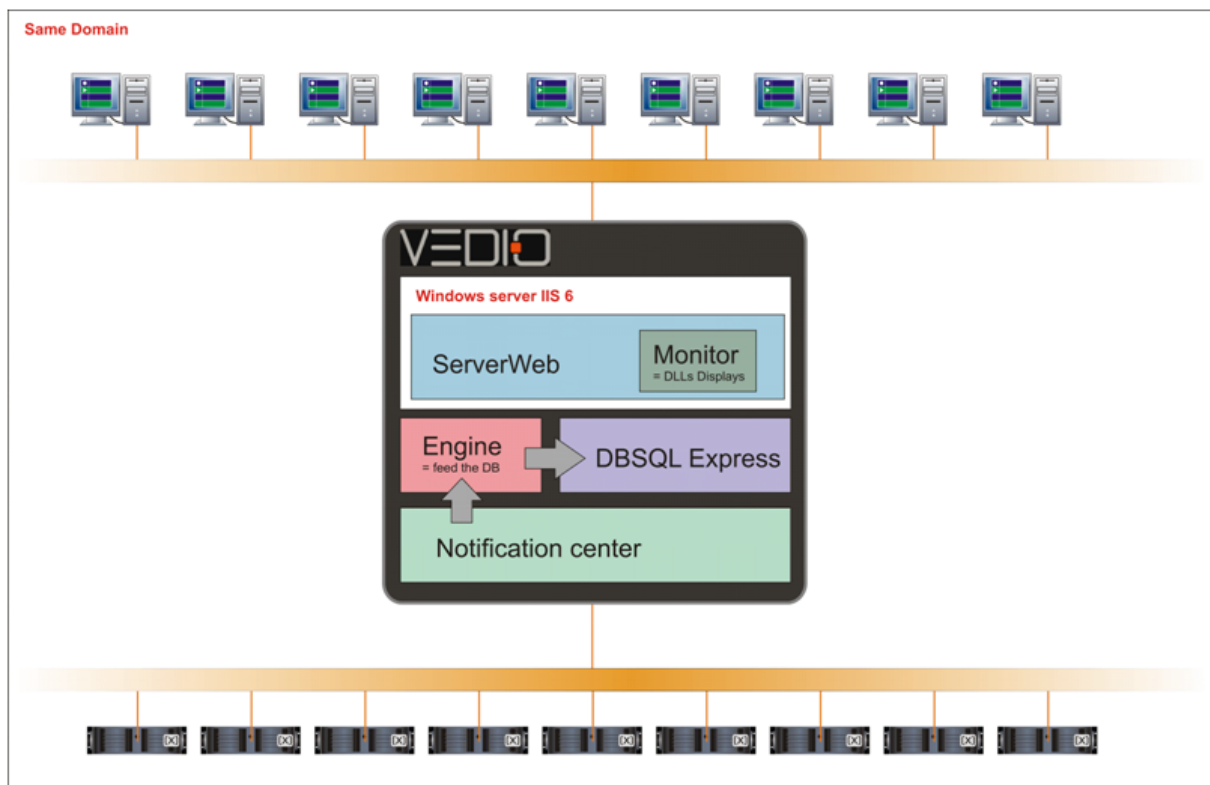
## 1.1 PURPOSE

VEDIO is a tool designed to centrally monitor all the operations processed by the XTAccess from a production broadcast workflow. Various filters can be applied to restrict the list of operations displayed on screen.

It allows to

- view the number of jobs according to their processing status
- filter and sort the jobs according to their processing status
- filter and sort the jobs according to various job parameters
- filter jobs according to the processor device
- memorize the applied filters and general configuration of the grid.

## 1.2 VEDIO ARCHITECTURE



The XTAccess send information on the jobs they processed to a Notification Center. This Center communicates with an Engine which feeds the database. The web server can be accessed by several browsers to display the job parameters.

## 2. Software Installation

---

### 2.1 SYSTEM PREREQUISITES

The VEDIO software is installed on a workstation operating under Windows Server. The following components must be present:

- .NET Framework 3.5 SP1
- IIS 6
- SQL Server Express 2005.

### 2.2 RECOMMENDED CONFIGURATIONS

The following configurations have been submitted to intensive tests and are strongly recommended for the use of VEDIO:

- XTA 1 = 1U mono-CPU Core i7 3Go RAM RAID1 system  
OS = WIN XP or SERVER 2003
- XTA 2 = 1U Bi-CPU Xeon 6Go RAM RAID1 system  
OS = SERVER 2003
- XTA 3 = 3U mono-CPU Core i7 3Go RAM with swappable Hard Disk Drive  
OS = WIN XP or SERVER 2003
- DB SERVER = 3 U - Intel Xeon X3220 2.4Ghz - 2Go RAM - HDD SAS 146Gb  
OS = SERVER 2003 and SQL 2005 already installed
- XSTORE 2 = 5U SUPERMICRO H8DA2 - QUADCORE OPTERON 2.3GHZ - 4Go RAM  
OS = SERVER 2003 and SQL 2005 already installed

### 2.3 RECOMMENDED WEB BROWSERS

The following web browsers and corresponding versions are recommended:

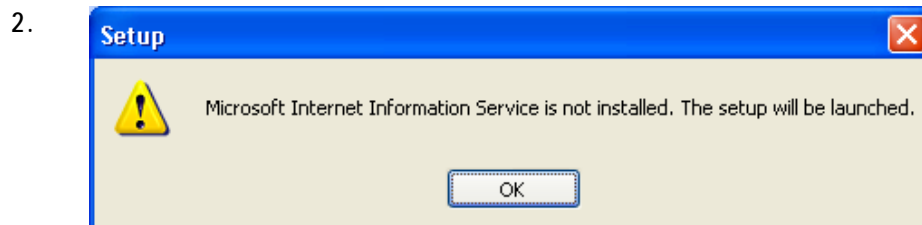
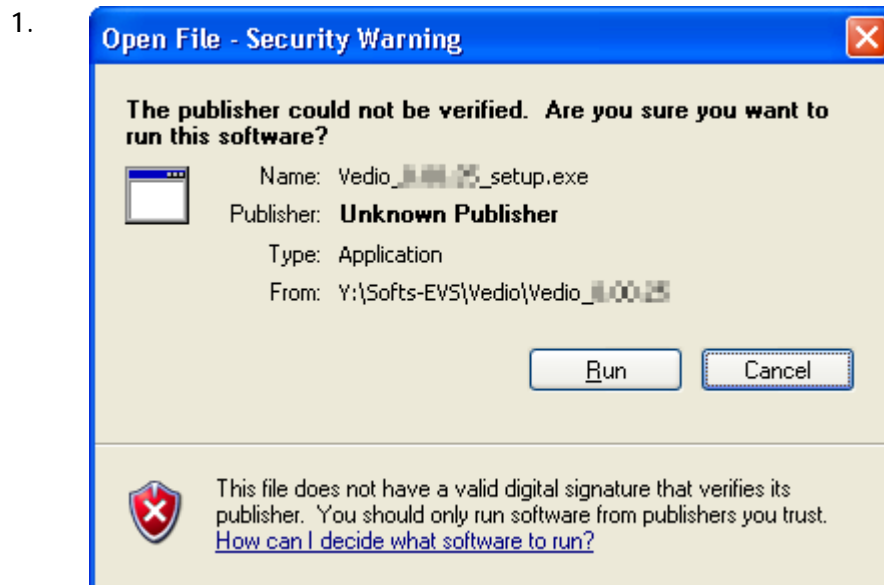
- Internet Explorer 8
- Firefox 3.0+
- Google Chrome 5.0+

## 2.4 INSTALLATION

Copy the installshield Vedio\_x.xx.xx\_Setup.exe in a temp directory (e.g. C:\Install Software\VEDIO\).

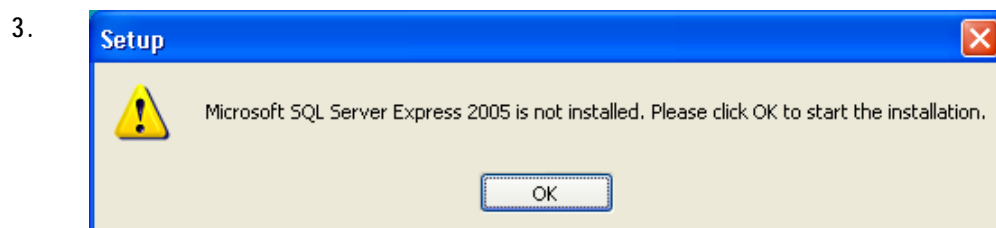
### 2.4.1 IIS AND SQL SERVER INSTALLATION

In case you try to install VEDIO while IIS and SQL Server are not present, you will have to install them first.



Click OK.

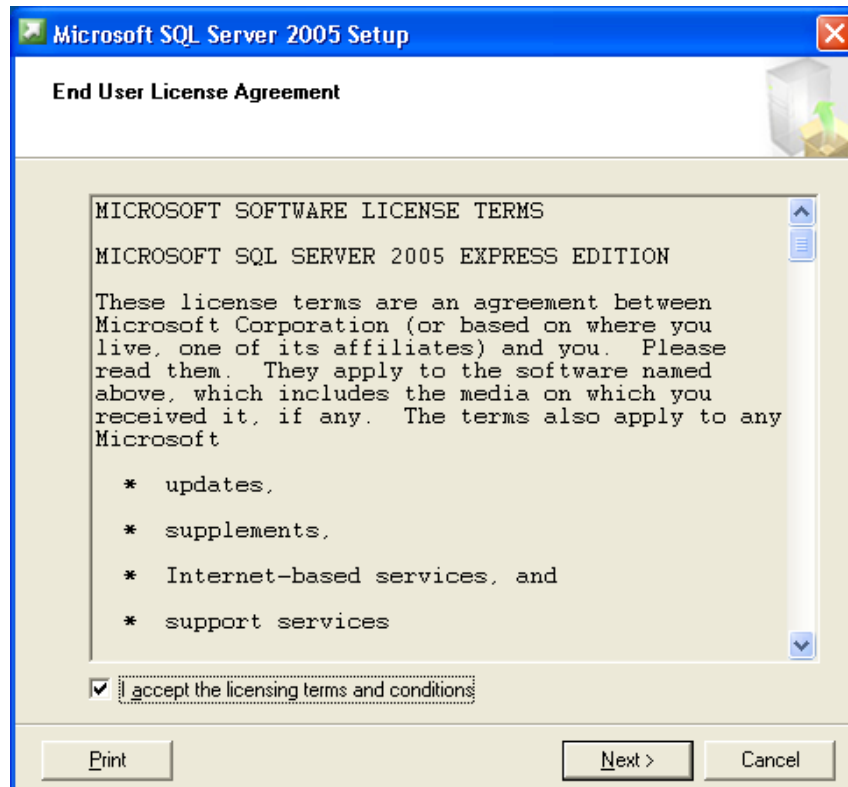
The Windows Components Wizard is displayed while files are copied.



Click OK.

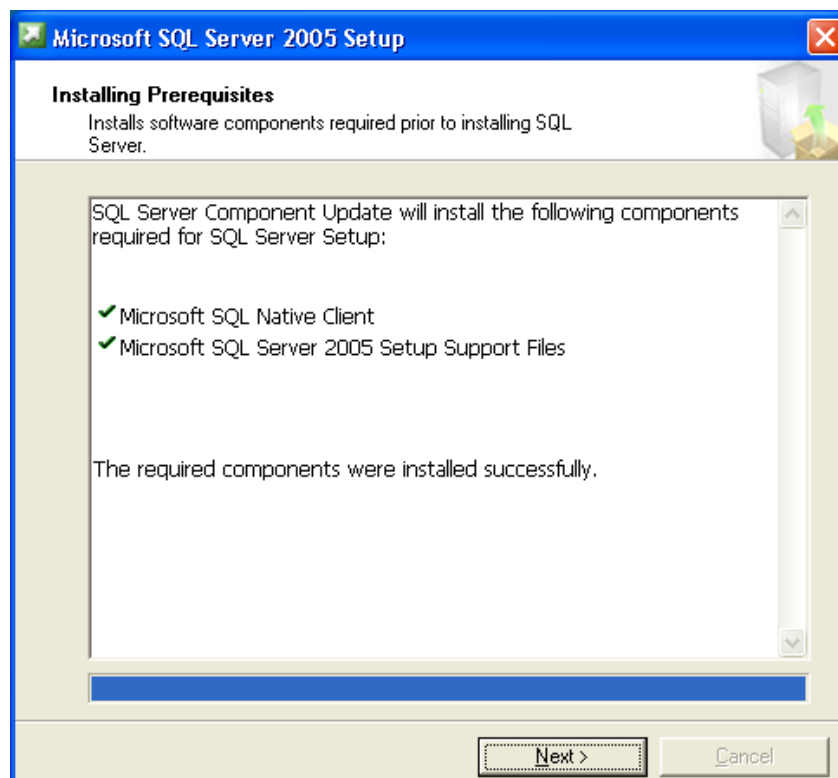
Files are extracted to install SQL Server.

4.



Select I accept the licensing terms and conditions and click Next.

5.



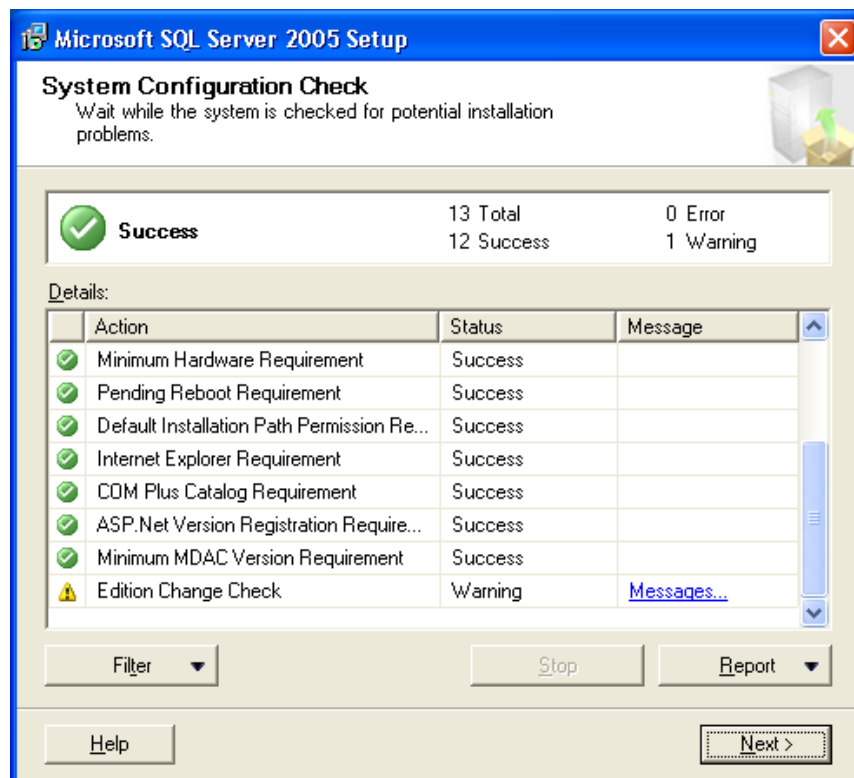
Click Install then Next.

6.



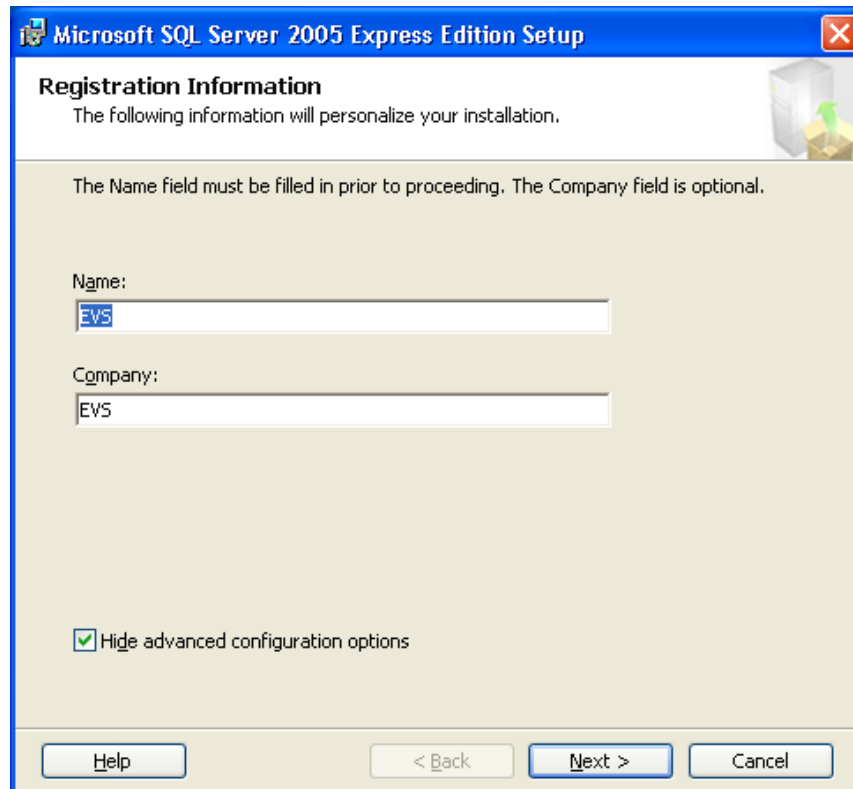
Click Next.

7.



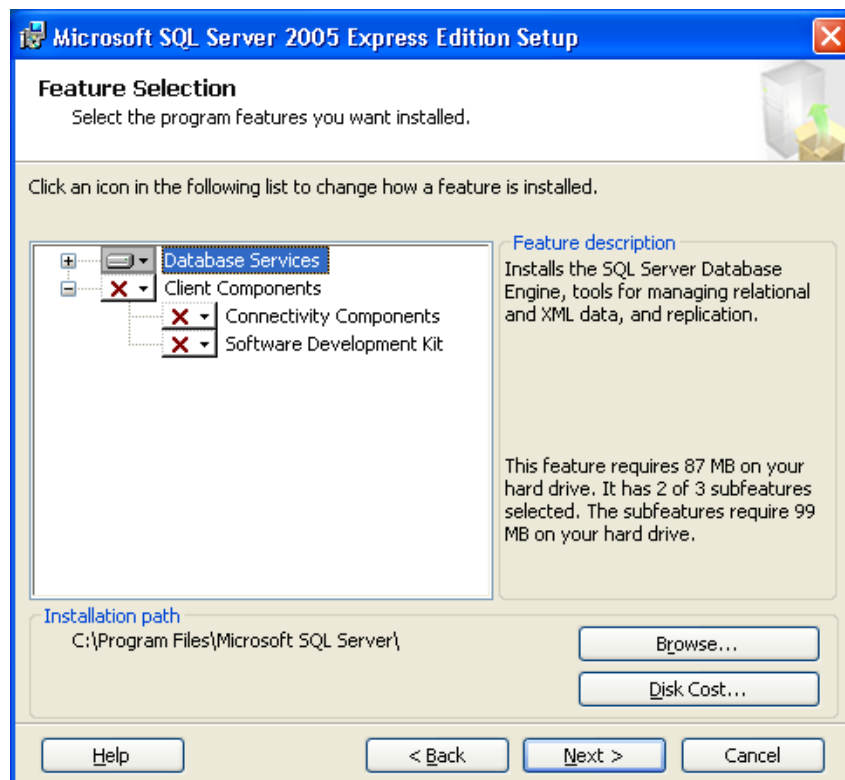
Click Next.

8.



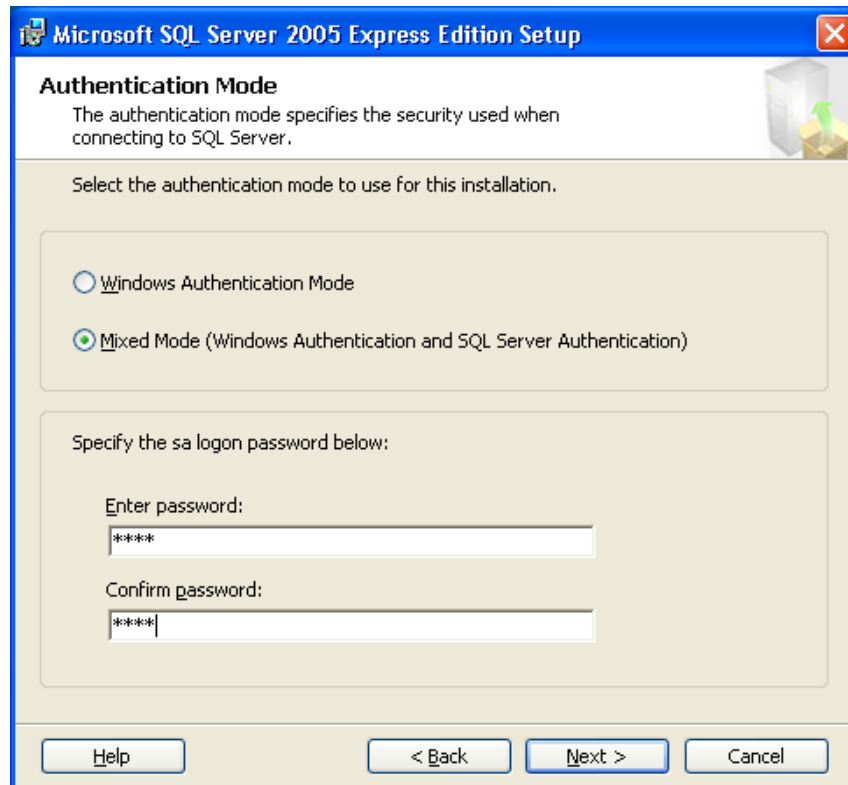
Enter information related to the company and click Next.

9.



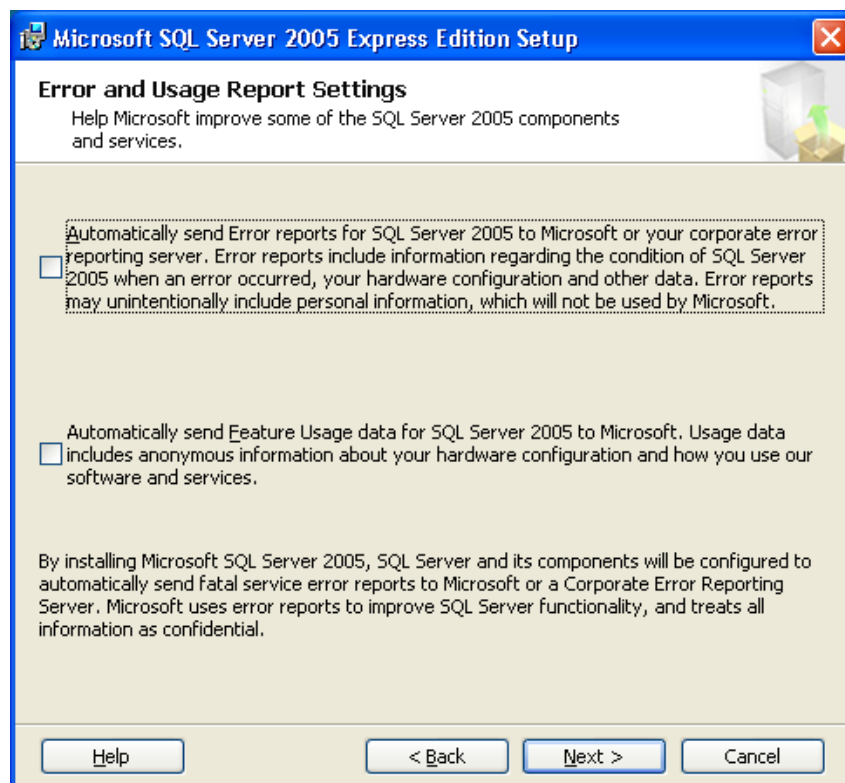
Browse to select the installation path and click Next.

10.



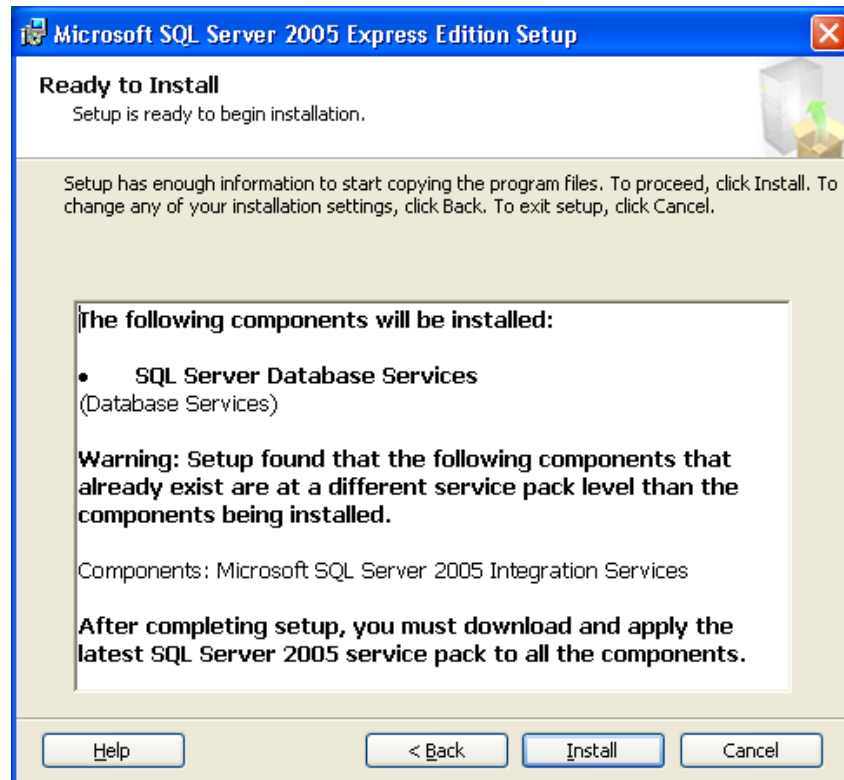
Enter a password for administration tasks and confirm it.

11.



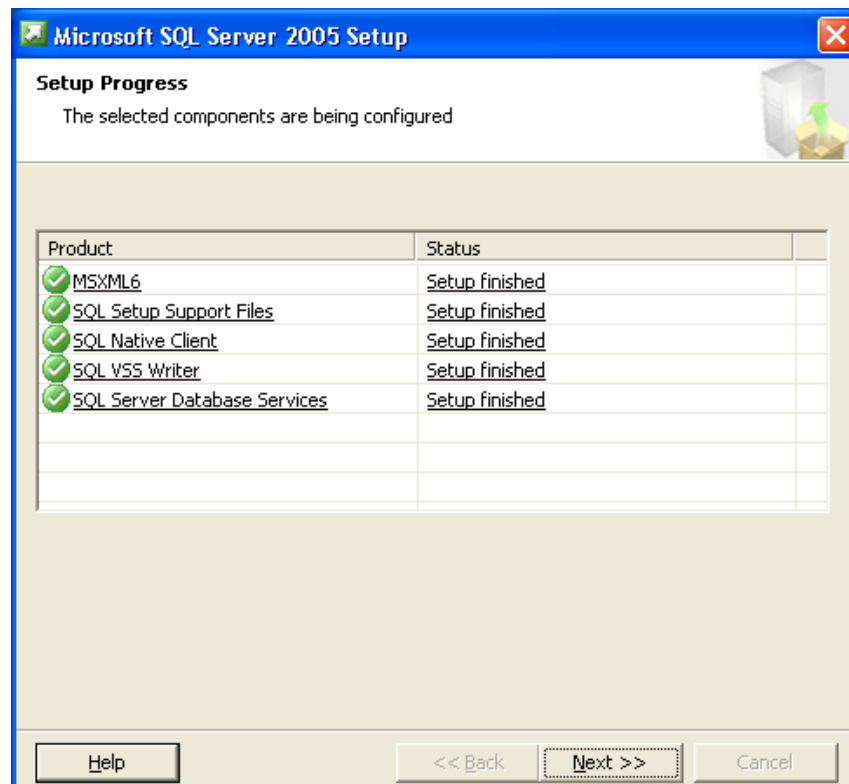
Click Next.

12.



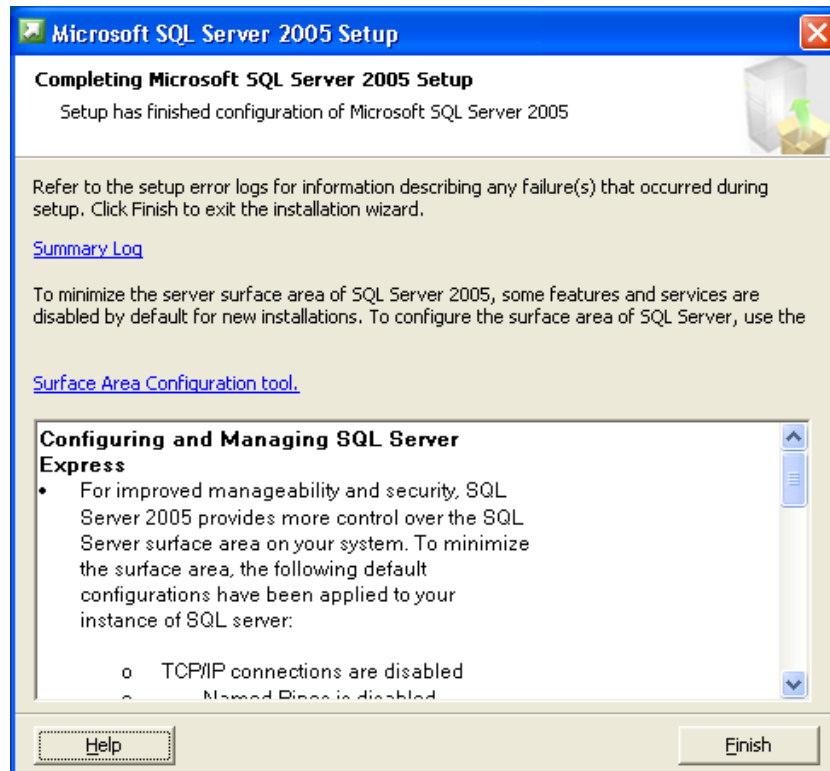
Click Install.

13.



Click Next.

14.



Click Finish.

### Potential Error Messages

Two kinds of error messages can be encountered during SQL installation.

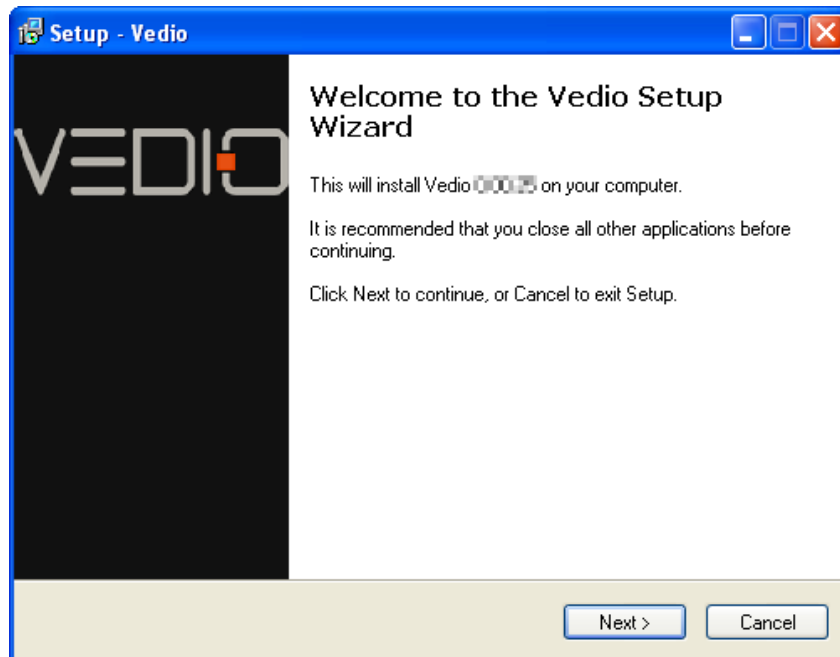
1. If the following message is displayed, select Continue running and ignore errors with this snap-in for the rest of the session.



2. In case SQL Native Client has previously been installed on the workstation, the installer warns the user that a .msi file is missing. This message is incorrect since this file is present. To solve the problem, proceed as follows:
  - o Stop the installation
  - o Go to the Add/Remove programs section of the Control Panel
  - o Uninstall SQL
  - o Restart VEDIO installation.

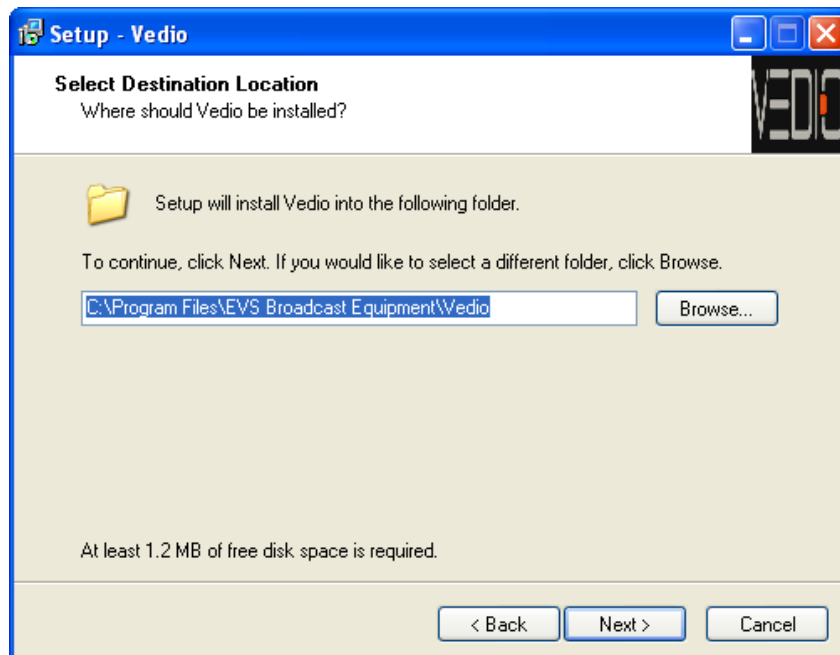
## 2.4.2 VEDIO INSTALLATION

1.



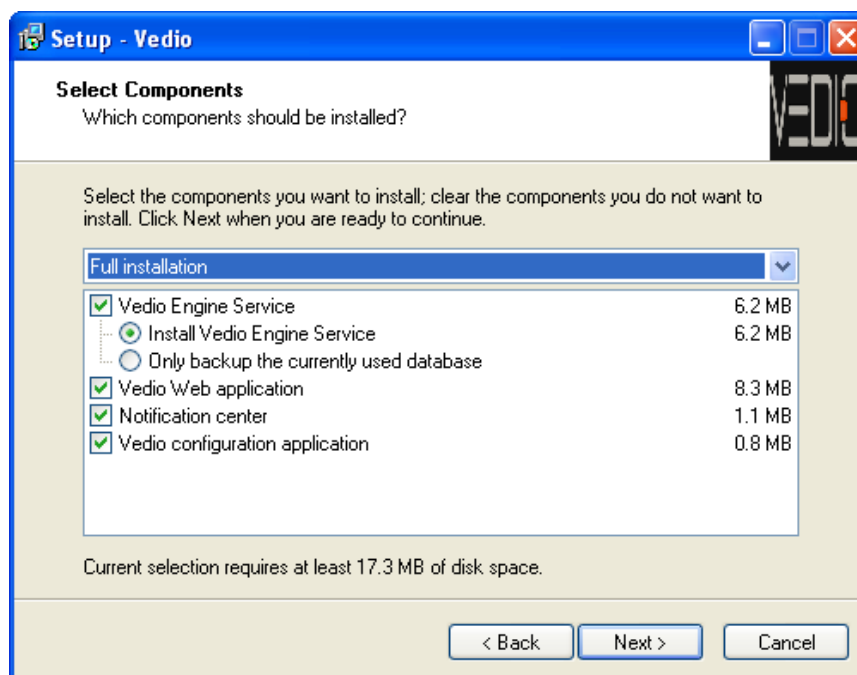
Click Next.

2.



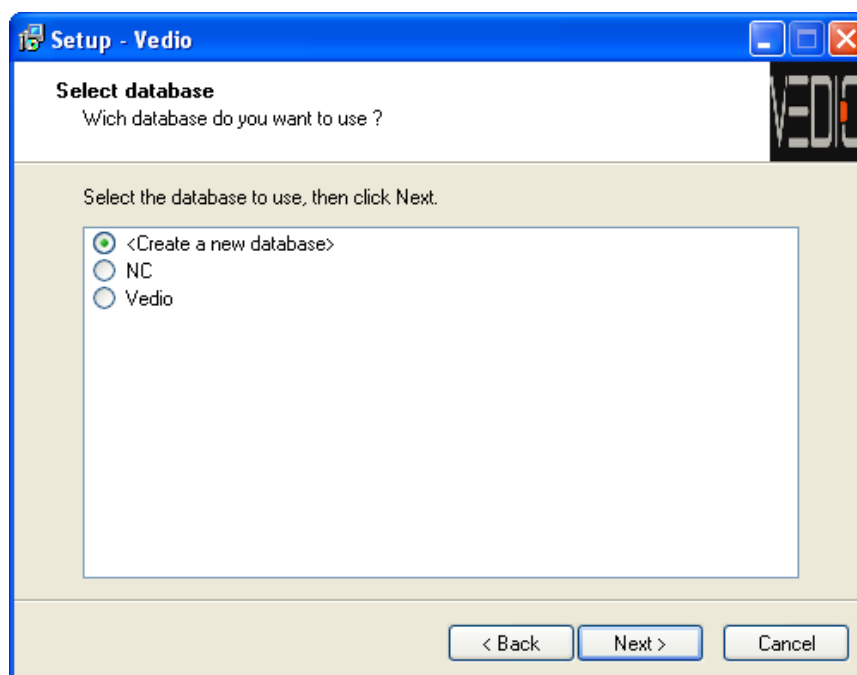
Browse for folder where to install VEDIO and click Next.

3.



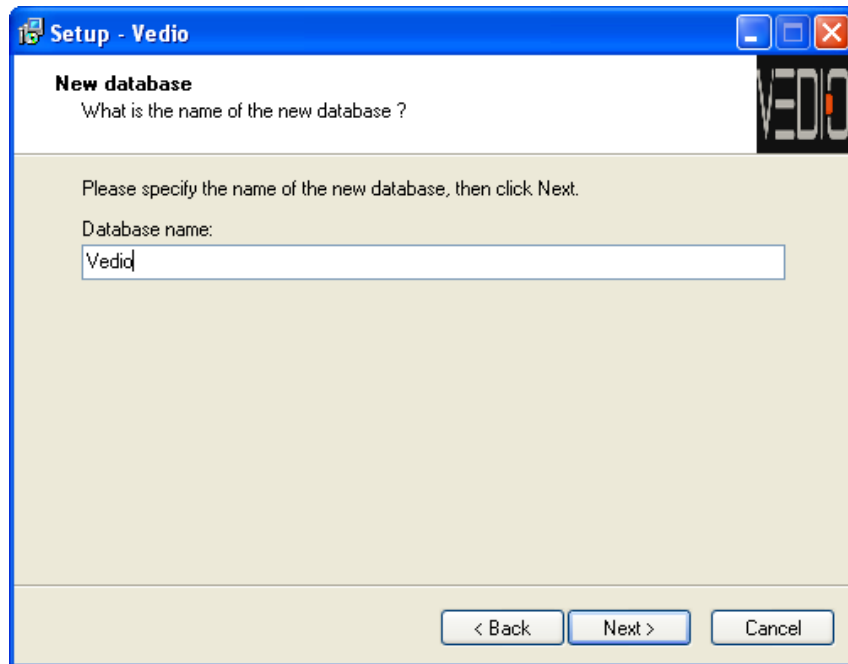
Click Next.

4.



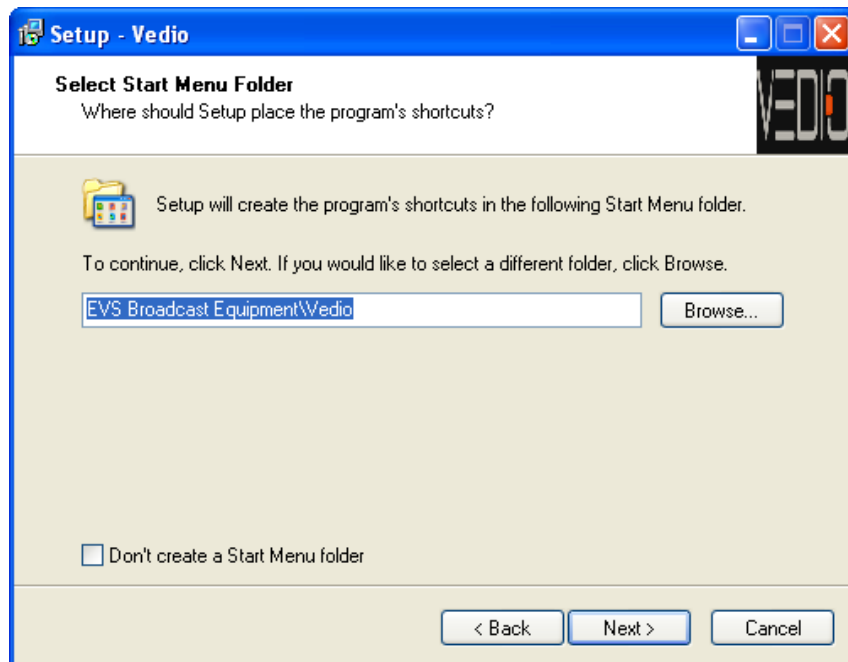
Click Next.

5.



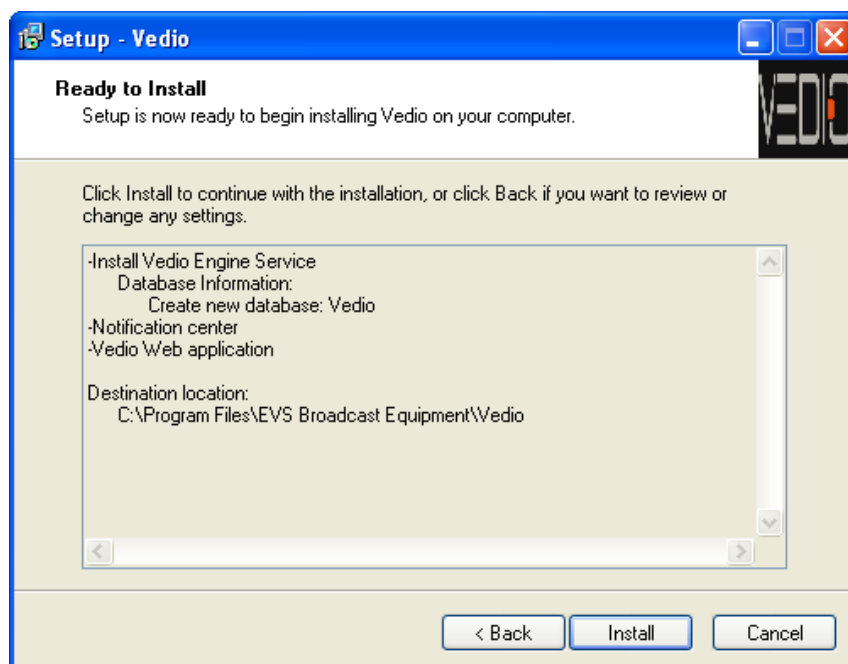
Enter a name for the database and click Next.

6.



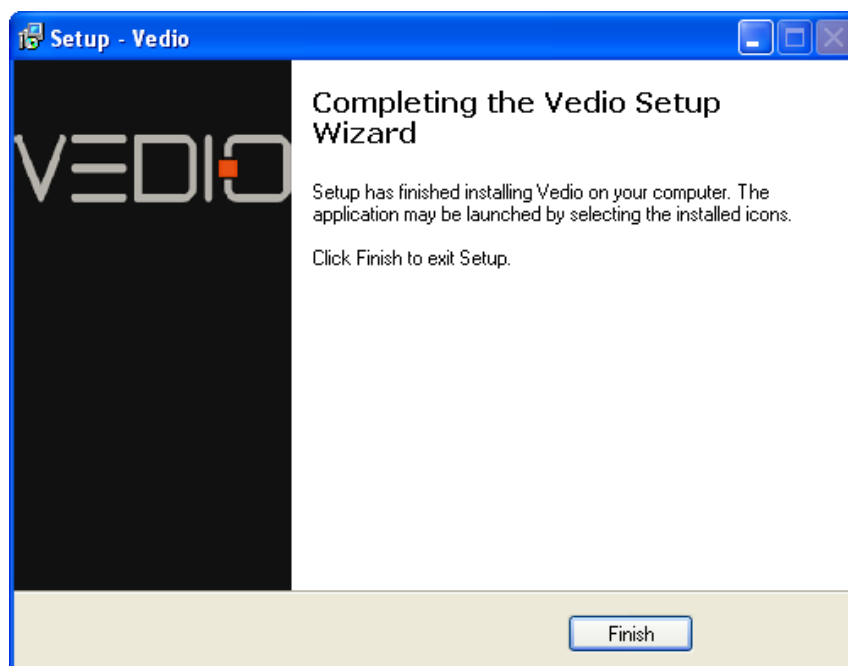
Click Next.

7.



Click Install.

8.



Click Finish.

All the associated services automatically launch, and the system is ready to use.

## 3. Database Maintenance

### 3.1 PURPOSE

In case of intensive use of VEDIO, the database used by VEDIO needs to be cleaned up. A tool allows this to be done automatically or manually.

The VEDIO database content can also be backed up.

This tool must be used by an administrator.

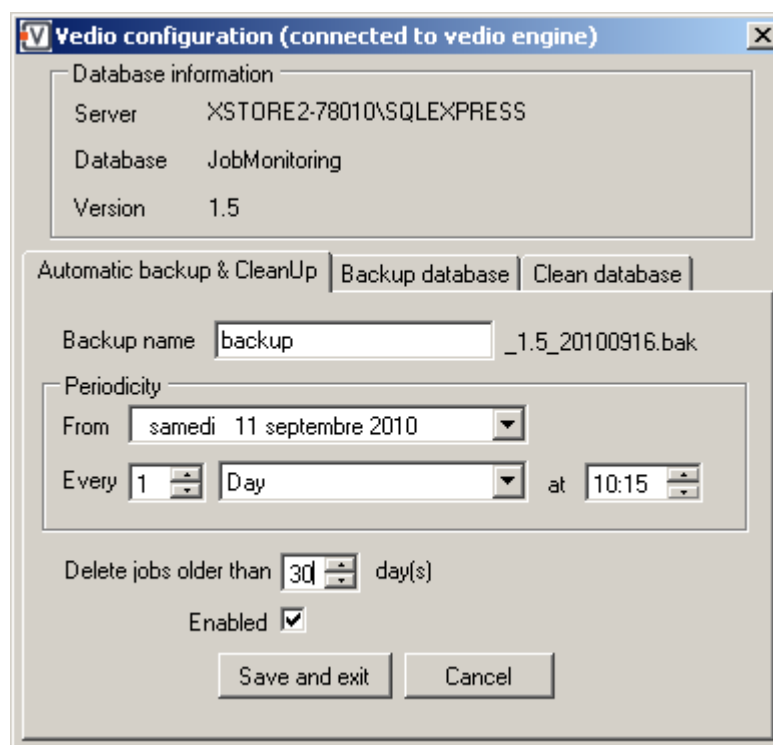
To open the VEDIO Configuration window, click the  icon.

Three tabs are available for

- automatic backup
- manual backup
- database cleanup

### 3.2 AUTOMATIC BACKUP

This tab is used to define parameters for automatic backup and automatic database purge.



**Vedio configuration (connected to vedio engine)**

Database information

Server XSTORE2-78010\SQLEXPRESS

Database JobMonitoring

Version 1.5

Automatic backup & CleanUp | Backup database | Clean database

Backup name backup \_1.5\_20100916.bak

Periodicity

From samedi 11 septembre 2010

Every 1 Day at 10:15

Delete jobs older than 30 day(s)

Enabled ☒

Save and exit Cancel

#### Backup Name

The backup name is made up of a part you can define and a part based on the

backup date and automatically assigned.

### Periodicity

You can define the date from which the automatic backup must take place, its periodicity and the time when it will be done.

### Database Purge

Define the number of days beyond which the jobs information will be deleted from the VEDIO database.

### Enabled

Select this parameter to activate the autobackup and purge processes.

### Save and Exit

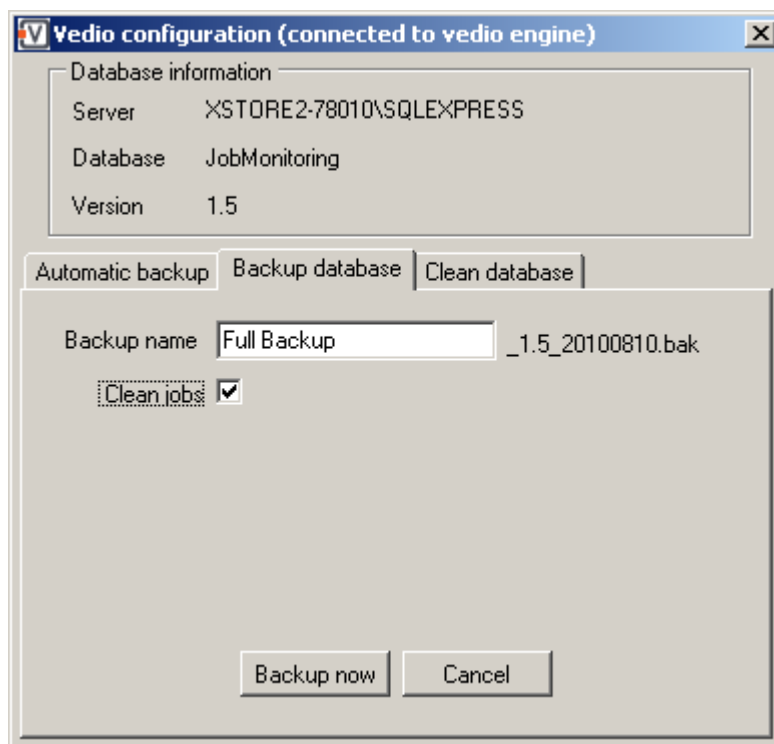
Click this button to save the parameters defined in the tab.

### Cancel

Click this button if you do not want to activate the automatic backup.

## 3.3 BACKUP DATABASE

This tab is used to perform a manual backup and, if required, to clean the information from all jobs.



### Backup Name

The backup name is made up of a part you can define and a part based on the backup date and automatically assigned.

### Clean jobs

Select this box if you want the jobs information to be deleted from the VEDIO database.

### Backup now

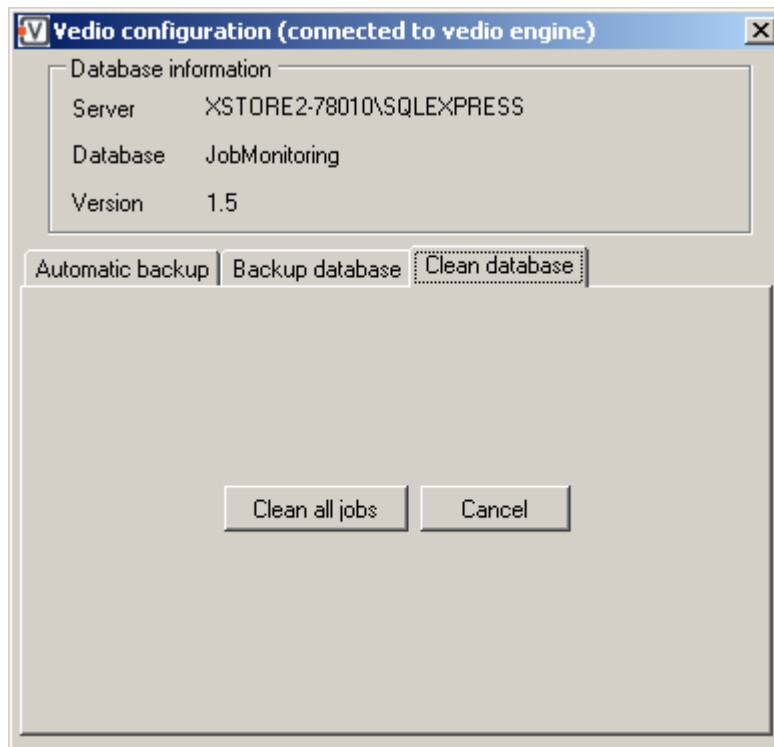
Click this button to start the manual backup and, if selected, to purge the database.

### Cancel

Click this button if you do not want to perform the manual backup.

## 3.4 CLEAN DATABASE

This tab is used to clean the information from all jobs.



### Clean all Jobs

Click this button to start the deletion of jobs information from the database.

### Cancel

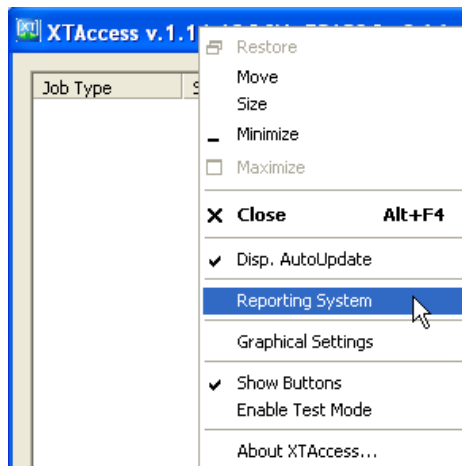
Click this button if you do not want to perform the database purge.

# 4. User's Manual

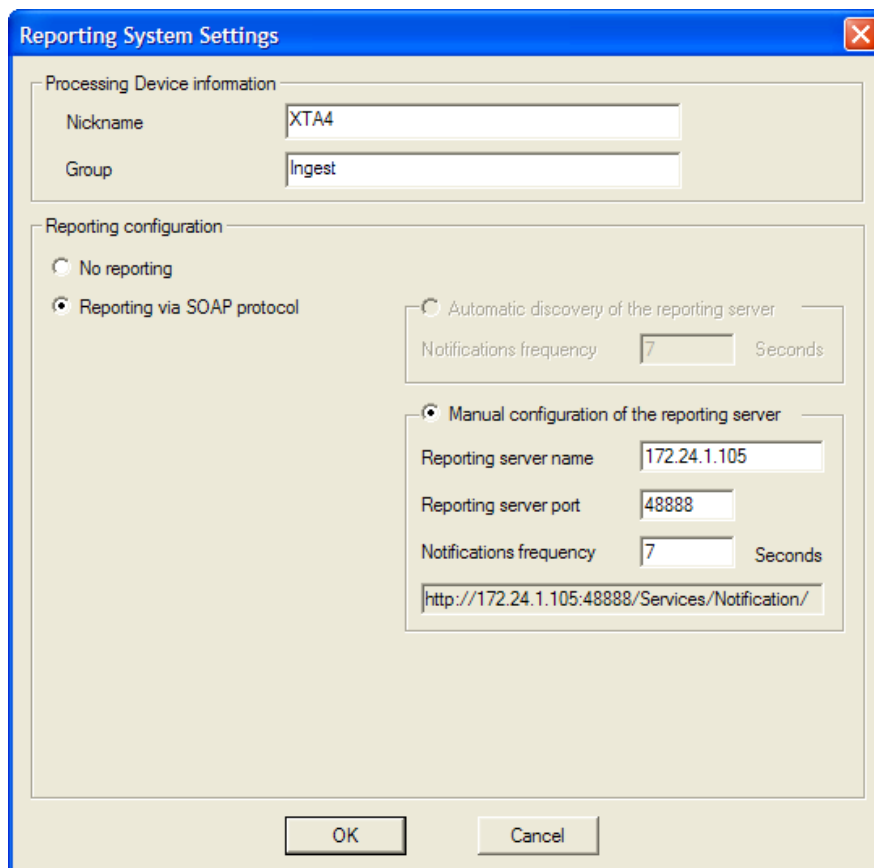
## 4.1 XTACCESS CONFIGURATION

To enable the communication between XTAcess and VEDIO, the reporting system of each XTAcess must have been activated.

Right-click on the XTAcess title bar and select Reporting System from the contextual menu:



The Reporting System Settings window opens:

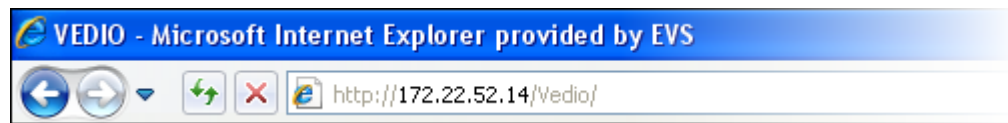


This window allows you to activate the reporting system of XTAccess to Vedio.

Command name	Description
Nickname	Allows you to define a nickname for XTAccess
Group	Allows you to define a group to which XTAccess will belong in the Vedio user interface.
Reporting Server Name	Host name or IP Address of the Vedio Notification Server
Reporting Server Port	Port of the Vedio Notification Server
Notification Frequency	Duration between two notifications to Vedio

## 4.2 USER INTERFACE

To start VEDIO, enter 'VEDIO IP address/Vedio/' in the selected browser.



### 4.2.1 OVERVIEW OF THE VEDIO WINDOW

The screenshot below shows the various areas of the VEDIO window.

The screenshot shows the VEDIO web interface with the following components highlighted:

- Job Processors List:** A sidebar on the left showing a list of XTAccess units and their status (Scheduled, In Progress, Successful, Failed, Cancelled).
- Status Area:** A yellow bar at the top of the main content area displaying the current status of the system.
- Jobs List:** A large table in the center displaying a list of jobs with columns for Processing date, Unit, Source Type, Source Name, Status, Message, Target Type, Destination, and Job Type.
- Quick Filters:** A purple bar at the top of the Jobs List table containing filters for In Progress, Scheduled, Successful, Failed, Cancelled, and Last Hour.

Processing date	Unit	Source Type	Source Name	Status	Message	Target Type	Destination	Job Type
Katore58320 XT...	XTA_XML Unit	file	Vedio	Cancelled	Job was cancelled	MXF OP1A SMPTE	txstore58320/PD/C	Rewrap
Katore58320 XT...	XTA_XML Unit	file	Transfer file to file	Successful	Job successful	MXF OP1A SMPTE	txstore58320/PD/C	Rewrap
Katore58320 XT...	XTA_XML Unit	file	Transfer file to file	Successful	Job successful	MXF OP1A SMPTE	txstore58320/PD/C	Rewrap
Katore58320 XT...	XTA_XML Unit	train	test2	Successful	Job successful	EVS MXF	txstore58320/PD/C	Backup
Katore58320 XT...	XTA_XML Unit	train	test1	Successful	Job successful	EVS MXF	txstore58320/PD/C	Backup
Katore58320 XT...	XTA_XML Unit	file	Transfer file to file	Successful	Job successful	MXF OP1A SMPTE	txstore58320/PD/C	Rewrap
Katore58320 XT...	XTA_XML Unit	file	Transfer file to file	Cancelled	Job was cancelled	MXF OP1A SMPTE	txstore58320/PD/C	Rewrap
Katore58320 XT...	XTA_XML Unit	file	Transfer file to file	Successful	Job successful	MXF OP1A SMPTE	txstore58320/PD/C	Rewrap
Katore58320 XT...	XTA_XML Unit	train	test2	Successful	Job successful	EVS MXF	txstore58320/PD/C	Backup
Katore58320 XT...	XTA_XML Unit	train	test1	Successful	Job successful	EVS MXF	txstore58320/PD/C	Backup
Katore58320 XT...	XTA_XML Unit	train	test1	Successful	Job successful	EVS MXF	txstore58320/PD/C	Backup
Katore58320 XT...	XTA_XML Unit	file	Transfer file to file	Successful	Job successful	MXF OP1A SMPTE	txstore58320/PD/C	Rewrap
Katore58320 XT...	XTA_XML Unit	file	Transfer file to file	Successful	Job successful	MXF OP1A SMPTE	txstore58320/PD/C	Rewrap
Katore58320 XT...	XTA_XML Unit	clip	Transfer file to file	Successful	Job successful	EVS MXF	txstore58320/PD/C	Backup
Katore58320 XT...	XTA_XML Unit	file	Transfer file to file	Successful	Job successful	EVS MXF	txstore58320/PD/C	Backup
Katore58320 XT...	XTA_XML Unit	file	Transfer file to file	Successful	Job successful	MXF OP1A SMPTE	txstore58320/PD/C	Rewrap
Katore58320 XT...	XTA_XML Unit	clip	Transfer file to file	Successful	Job successful	MXF OP1A SMPTE	txstore58320/PD/C	Backup
Katore58320 XT...	XTA_XML Unit	playlist	Vedio	Cancelled	Job was cancelled	XT	ftp://*****@172.2	Transcode

### JOB PROCESSORS LIST

This area displays all the XTAccess present on the network provided that the reporting system of each XTAccess to VEDIO has been activated.

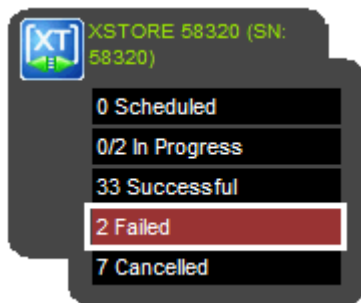
In case groups have been defined in this reporting system, XTAccess will appear under their respective group in the Job Processors List.

Each XTAccess box mentions the number of jobs

- Scheduled
- In progress. In X/Y, X is the number of jobs currently in progress and Y is the maximum number of jobs which can be processed at a time.
- Successful
- Failed
- Cancelled

### Error Display

In case of failed jobs, 'Failed' is displayed on a red background.



In case of disconnection from the Notification Center, the whole XTAccess box is displayed in red:



### Filters

The Job Processors area can be used to filter the jobs listed in the VEDIO Grid. Refer to section 'Filters on Processors List' on page 32.

## STATUS AREA

The Status area gives indication on the status of processors loading.

Information related to connection to the database and to the Notification Center as well as potential errors is displayed in this area.

## JOBS GRID




The grid displays parameters and values for jobs in a General tab.

The columns displayed in the grid can be selected, organized and resized. Refer to section 4.3 'Grid Display' on page 23.

Different kinds of filters can be applied to restrict the job list, based on the job status, a period of time and/or a specific parameter. Quick Filters buttons are available but additional tabs corresponding to a specific filter can also be defined. Refer to section 4.4 'Filters' on page 29.

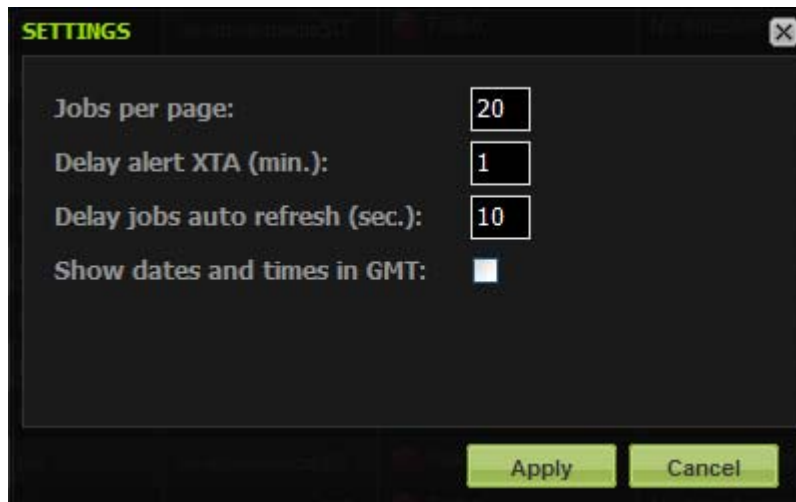
## CONNECTION STATUS

The icon displayed at the top right of the grid gives information on the connection status:

Icon	Meaning
 (green)	Vedio is connected to the engine service.
 (orange)	Vedio is not connected to the engine service.
 (red)	Vedio is connected to the engine service but the service is not connected to the notification center. or Vedio is connected to the engine service but the service is not connected to the jobs database.

## 4.2.2 SETTINGS

The Settings window is reached by clicking the Settings button at the top right of the VEDIO window.



### Jobs per Page

This value defines the number of lines displayed in the grid.

If the number of jobs per page is greater than the numbers of jobs which can be displayed on screen, a vertical scroll bar allows to navigate within the list.

When the jobs number is greater than the selected value, you can move from one page to another

- by entering a page number in the Page field or
- by using the First Page, Previous Page, Next Page or Last Page buttons

at the bottom of the grid:



### Delay Alert XTA (min.)

This value represents limit of time, in minutes, to alert users in case of disconnection of an XTAccess.

### Delay Jobs Auto Refresh (sec.)

This value represents the period of time, in seconds, to execute the Auto Refresh function when it is activated.

The Auto-Refresh is enabled or disabled by clicking the Auto Refresh button at the top right of the grid. By default, it is activated and the button is then green:



### Show Dates and Times in GMT

When this box is not selected, dates and times from the PC are associated to jobs.

When the box is selected, GMT dates and times from the XTAccess are taken into account.

## 4.3 GRID DISPLAY

The jobs list is displayed in a grid. The various job parameters are presented in columns. Users can select the columns to be displayed. They can also resize the width or reorganize the column order.

The organization of the columns is recalled the next time the user opens VEDIO.

At each time, the grid display can be reset to the default one by clicking the Reset Default button at the bottom of the grid:

**Reset default**



### Note

Cookies must be activated in the browsers so the system remembers the grid layout.

### 4.3.1 COLUMN ORDER AND WIDTH

A column can be moved by a drag-and-drop operation of its heading.

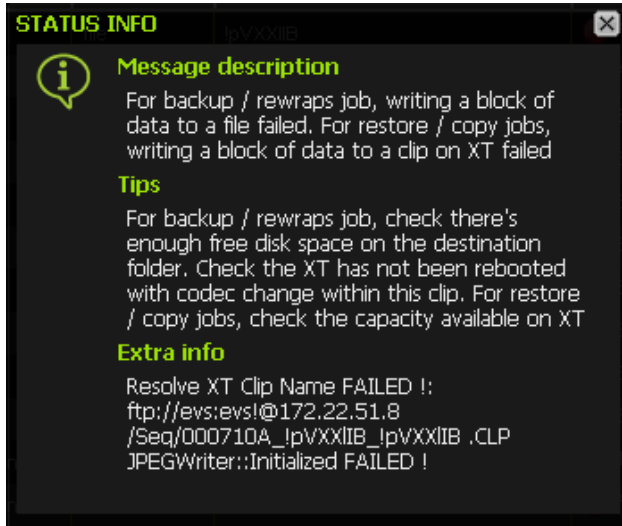
It can be resized by a drag-and-drop operation of its border.

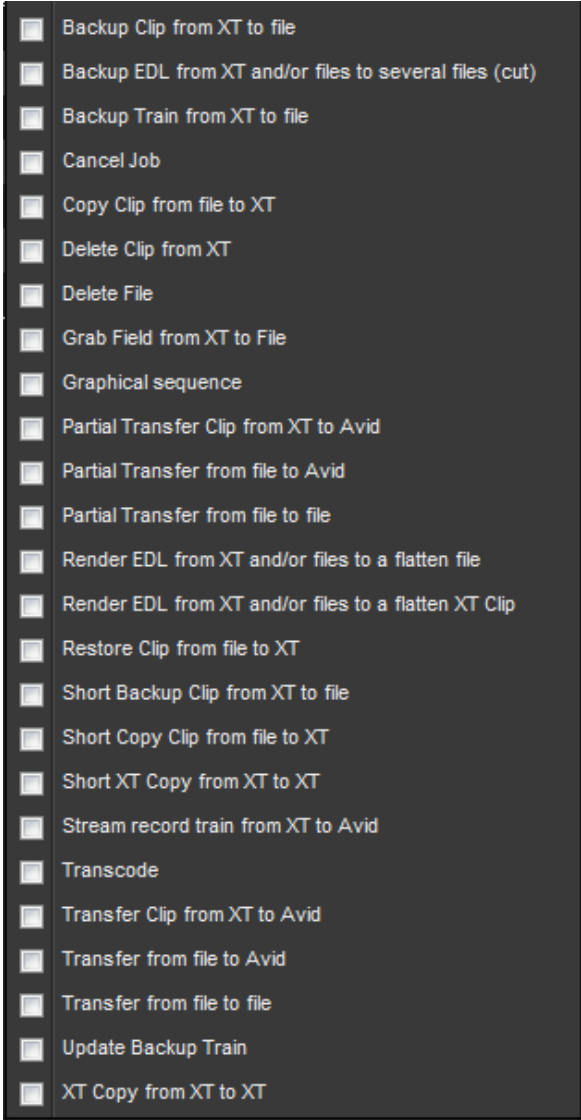
### 4.3.2 COLUMNS SELECTION

#### AVAILABLE COLUMNS

The table below lists all the columns which can be displayed in the grid, their description and the columns displayed by default.

Column Heading	Description	Default
Processing Device	XTAccess name, version number and serial number.	√
XML Unit	Name of the XML unit used to process the job.	√
XML Unit Path	Path of XML folder.	
Source Type	Element type to be processed. Possible values: clip, file, graphical sequence, playlist, timeline, train.	√
Source Name	Name of the element to be processed.	√
Status	Job processing status. Possible values: Canceled, failed, In Progress, Scheduled, Successful.	√
Message Code	Code number associated to a type of message.	

Column Heading	Description	Default
Message	<p>Generic message related to the job processing status.</p> <p>A double-click on the message opens a Status Info window which displays more information in case of failed jobs.</p> <p>Example:</p>  <p>The screenshot shows a window titled 'STATUS INFO' with a close button. It contains an information icon and the following text:</p> <p><b>Message description</b> For backup / rewraps job, writing a block of data to a file failed. For restore / copy jobs, writing a block of data to a clip on XT failed</p> <p><b>Tips</b> For backup / rewraps job, check there's enough free disk space on the destination folder. Check the XT has not been rebooted with codec change within this clip. For restore / copy jobs, check the capacity available on XT</p> <p><b>Extra info</b> Resolve XT Clip Name FAILED !: ftp://evs:evs!@172.22.51.8 /Seq/000710A_IpVXXIIB_IpVXXIIB .CLP JPEGWriter::Initialized FAILED !</p>	√
Target Type	<p>Type of the target defined for the job processing.</p> <p>Possible values: AVI, CleanEdit Ref, DV-Diff, EDL, EVS MXF, EVS MXF 2MB, EVS MXF 2MB BAVD, EVS MXF 8MB BAVD, JPEG, MP4, MPEG Elementary Streams, MPEG Program Stream, MPEG Transport Stream, MXF OP1A (Standard SMPTE), MXF OP1A XDCAM, MXF OPAtom AVID, MXF? P2, Quick Time Movie, Quick Time Reference, Raw DV, WAVE, Windows Media, XT, XT FTP.</p>	√
Target Name	Name of the target defined for the job processing.	
Destination	Physical destination of the job processing result. According to Target Type, it could be: Full LSM ID including IP address / Full LSM ID including NetName / TM name / Full File Path.	√
Job Type Code	Code number associated to a type of job.	
Job Type	<p>Type of job processed by XTAccess.</p> <p>Possible values: Avid, Backup, BackupPlst, Cancel, Delete, GrabField, PlstRender, Restore, Rewrap, Transcode, Transfer, Update.</p>	√

Column Heading	Description	Default
Initial Job Type Code	Code number associated to an initial job type.	
Initial Job Type	<p>Type of job requested to XTAccess.</p> <p>Possible values:</p> 	
Start Date	Date at which the job was initiated.	
Start Time	Time at which the job was initiated.	
End Date	Date at which the job ended.	
End Time	Time at which the job ended.	
Creation Date	Date at which the job was requested. This is the only date displayed for Scheduled jobs.	

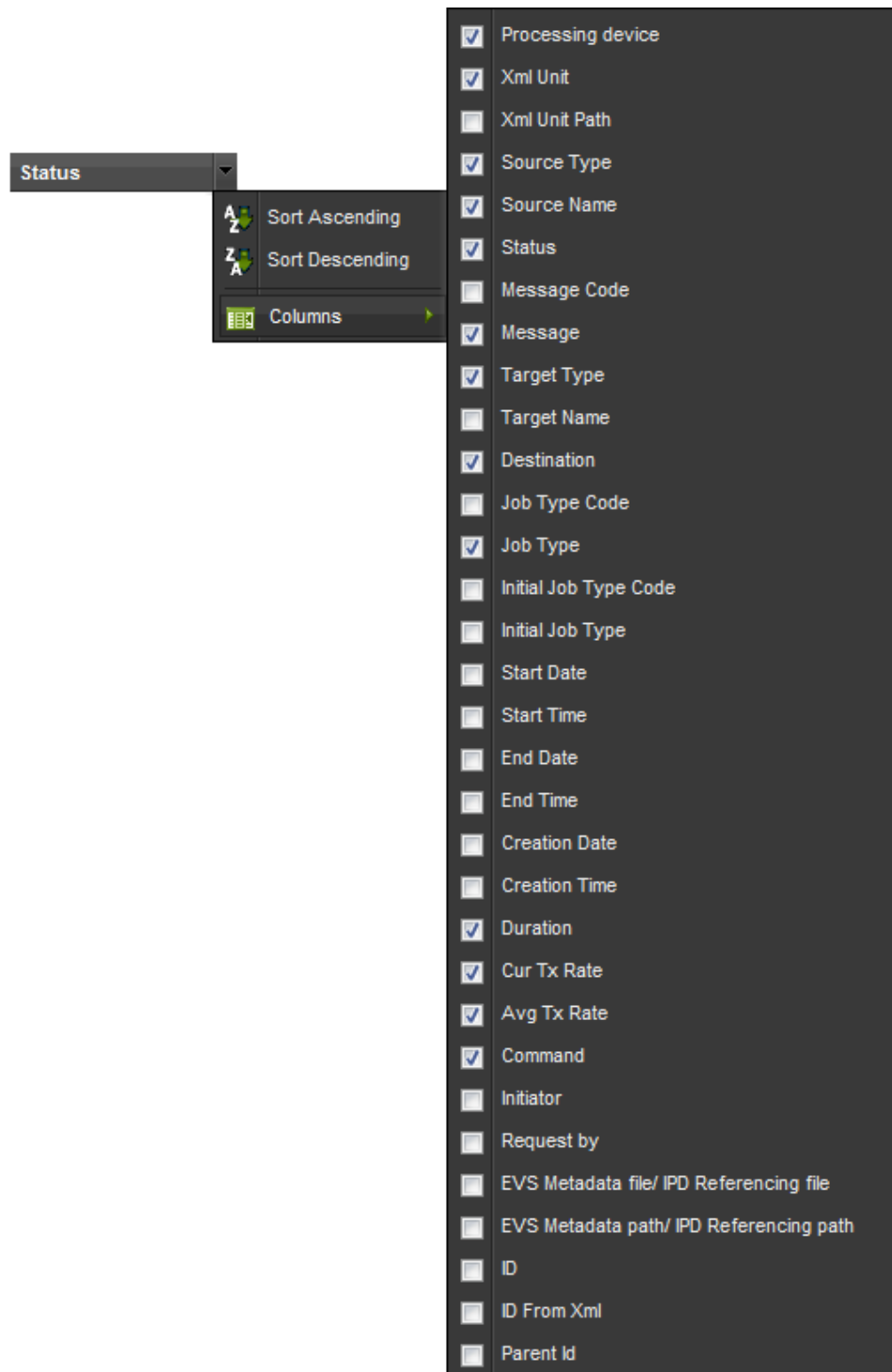
Column Heading	Description	Default
Creation Time	Time at which the job was requested. This is the only time displayed for Scheduled jobs.	
Duration	Duration of the job processing.	
Cur Tx Rate	Instantaneous bit rate during job processing. (MB/sec)	√
Avg Tx Rate	Average bit rate to process the job (MB/sec).	√
Initiator	Way the job is initiated. Possible values: Manual, ScanFolder, XML.	
Request by	Identification of the requestor of the job, such as IPD, XTA or third parties.	
EVS Metadata file / IPD Referencing file	Filename of the EVS metadata file.	
EVS Metadata path / IPD Referencing path	Folder where the EVS metadata file has been stored.	
ID	Job identification number given by VEDIO. Used for debug.	
ID from XML	Job identification number from the XML file. Used for debug.	
Parent ID	For jobs related to the backup of clips from a playlist, the Parent ID represents the job identification number for the playlist EDL.	

## HOW TO SELECT COLUMNS TO DISPLAY

To select the columns you want to be displayed in the grid, proceed as follows:

1. Click the black arrow at the right of any column heading.

A menu opens:

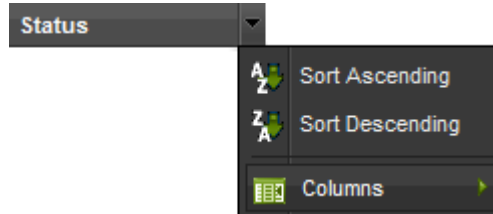


2. Select the box(es) corresponding to the columns.
3. Click outside the menu to apply the selection and close the menu.

### 4.3.3 RESULTS SORTING

You can change the sort order of data in a column.

1. Click the black arrow at the right of any column heading to open the following menu:



2. Select Sort Ascending or Sort Descending from the menu.


A little white triangle indicates the sorting order:

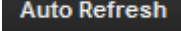


3. Clicking the column heading again changes the sorting order from ascending to descending or vice versa:



### 4.3.4 GRID DISPLAY REFRESH

The Refresh button , at the bottom of the grid, can be used at any time to refresh the grid display.

The Auto Refresh function can be enabled by clicking the  button at the top right of the grid. The jobs list will automatically be refreshed according to the period defined in the Settings > Delay Jobs Auto Refresh (sec.).

By default, the Auto Refresh function is enabled and the button appears on a green background:



In case the Last 24h filter, activated by default, is disabled, the Auto Refresh function is disabled as well.

## 4.4 FILTERS

The grid displays all parameters and values for jobs in a General tab.

Different kinds of filters can be applied to restrict the job list, based on the job status, a period of time and/or a specific job parameter.

Additional tabs, corresponding to specific search criteria or to a selected processor, can also be defined and kept to easily apply a filter on the jobs list.



### Note

Cookies must be activated in the browsers so the system remembers the defined tabs.

### 4.4.1 GENERAL TAB

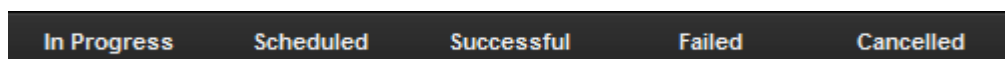
By default, all the jobs for all the processors monitored by VEDIO are displayed in a General tab.

In this tab, the following types of filters can be applied, or a combination of them:

- Quick filter on job status
- Quick filter on jobs from last day or last hour
- Filter on any job parameter from the column headings.

### QUICK FILTERS

#### *Filters on Job Status*



Five quick filter buttons allow to filter the jobs list on the job processing status. When a filter is enabled, the button appears on a green background:



#### *Filters on Creation Time*

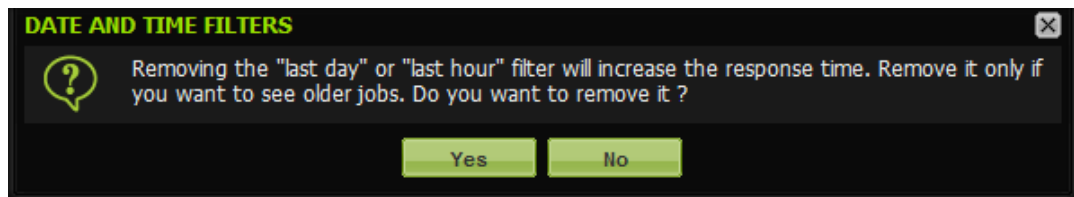


Two quick filter buttons allow to filter the jobs created during

- the last 24 hours
- the last hour:

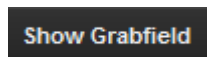
By default, the Last 24-h button is activated.

Jobs processed within the last 24 hours are stored in the cache. Beyond that, data are stored in the database. So, if you deactivate both the Last 24-h and the Last Hour filters, the following message warns you that the response time could be increased.



### *Show Grabfield*

To avoid overloading the jobs list due to the number of thumbnails which can be generated by some applications, jobs corresponding to the generation of grabfield are not displayed by default in the grid. To display these jobs, click the **Show Grabfield** button over the grid.



When this function is enabled, the button appears on a green background.

By default, it is disabled.

### *Remove Quick Filter*

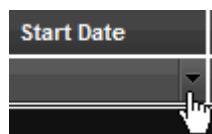
To clear a filter applied with a quick filter button, click the quick filter button again. The Clear Filters button has no effect on quick filter buttons.

## FILTERS ON COLUMN HEADING VALUE

More detailed search operations can be performed on the various job parameters. They allow searches in a specific column.

### *How to Define a Search Criterion on a Job Parameter*

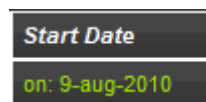
1. The search fields are available from any column by clicking the small black arrow at the right of the cell just under the column heading:



According to the job parameter, different types of search fields can appear. Refer to section 'Search Fields Types' on page 31 for the list of search fields.

2. Enter your search criterion/a.
3. Click outside the menu to apply the selection and close the menu.

Once defined, the search criterion is displayed in green in the field and the column heading is italicized:



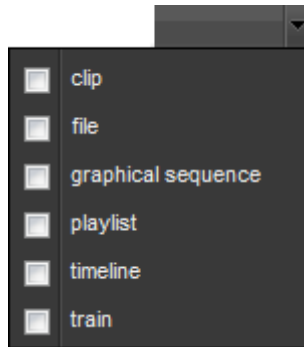
## Search Fields Types

According to the job parameter, different types of search fields exist:

- free text field, e.g. Source Name field:

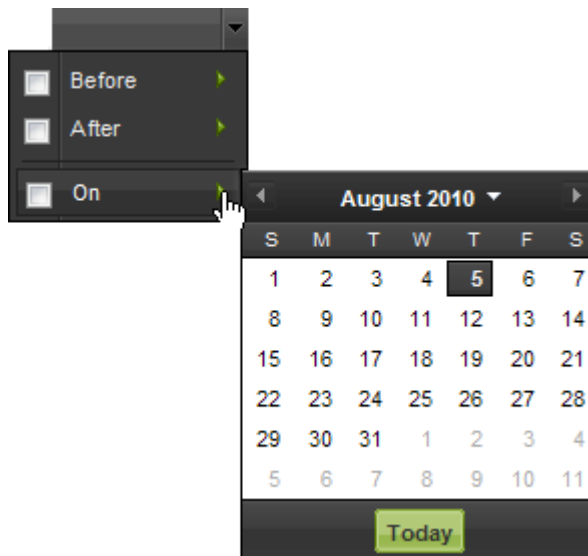


- field with an option list, e.g. Source Type field:



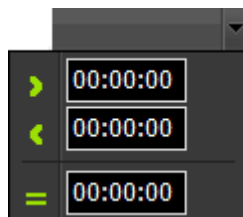
Refer to section 'Available Columns' on page 23 for the list of possible values for each job parameter.

- field with a calendar to filter on a date, e.g. Start Date field.



A combination of several date criteria is possible.

- field where you can enter a time value, e.g. Start Time field.



A combination of several time criteria is possible.

## Clear Filters Defined from Column Headings

The Clear Filters button located at the bottom of the grid removes the filters defined on column heading values, it does not act on the quick filter buttons.

## COMBINATION OF FILTERS

Several search criteria can be applied at the same time, for example:

- several quick filters: processing status and/or creation time (last 24h/last h)
- quick filter and filter on column heading
- several filters on column heading

## 4.4.2 ADDITIONAL TABS

Users can create up to 10 tabs corresponding to specific search filters. So, they have a quick access to customized jobs list.

New tabs are created in one of the following ways:

- by filtering jobs from the processors list
- by saving, in a new grid, a filter you have just defined.

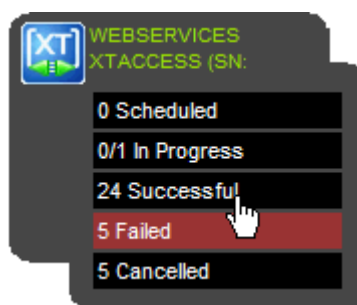
## FILTERS ON PROCESSORS LIST

You can restrict the jobs listed in the VEDIO window by applying filters from the Processors List. The jobs list is then displayed in a new tab.

The jobs can be filtered on... by double-clicking on...

a processing status from one processor

a selected processing status in a processor box:



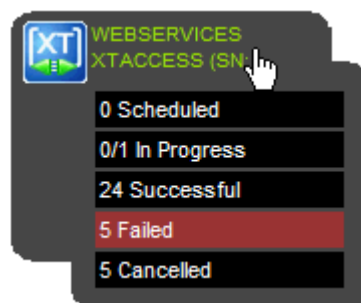
A new tab is automatically created in the grid:

General WEBSERVICES XTACCESS (SN: 635000) - Successful					
In Progress	Scheduled	Successful	Failed	Cancelled	Last 24-h Last Hour
Processing de...	Xml Unit	Xml Unit Path	Source Type	Source Name	Status
tm01 XTAccess ...	XTA_XML Unit A...	\\Xstore58320\VT...	file	Transfer file to Avid	✓ Successful
tm01 XTAccess ...	XTA_XML Unit A...	\\Xstore58320\VT...	train	test1	✓ Successful
tm01 XTAccess ...	XTA_XML Unit A...	\\Xstore58320\VT...	file	Transfer file to Avid	✓ Successful
tm01 XTAccess ...	XTA_XML Unit A...	\\Xstore58320\VT...	file	Transfer file to Avid	✓ Successful

The jobs can be filtered on... by double-clicking on...

an XTAccess

a selected XTAccess box:

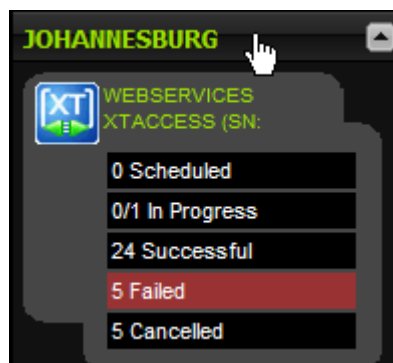


A new tab is automatically created in the grid, listing all the jobs processed by an XTAccess:

General WEBSERVICES XTACCESS (SN: 635000)					
In Progress	Scheduled	Successful	Failed	Cancelled	
Processing de...	Xml Unit	Xml Unit Path	Source Type	Source Name	Status
tm01 XTAccess ...	XTA_XML Unit A...	\\Xstore58320\XT...	file	Transfer file to Avid	Failed
tm01 XTAccess ...	XTA_XML Unit A...	\\Xstore58320\XT...	file	Transfer file to Avid	Cancelled
tm01 XTAccess ...	XTA_XML Unit A...	\\Xstore58320\XT...	file	Transfer file to Avid	Successful
tm01 XTAccess ...	XTA_XML Unit A...	\\Xstore58320\XT...	train	test1	Successful

a group of XTAccess

A selected group of XTAccess:



A new tab is automatically created in the grid, listing all the jobs processed by all the XTAccess from the group:

General Group-JOHANNESBURG					
In Progress	Scheduled	Successful	Failed	Cancelled	
Processing de...	Xml Unit	Xml Unit Path	Source Type	Source Name	Status
tm01 XTAccess ...	XTA_XML Unit A...	\\Xstore58320\XT...	file	Transfer file to Avid	Failed
tm01 XTAccess ...	XTA_XML Unit A...	\\Xstore58320\XT...	file	Transfer file to Avid	Cancelled
tm01 XTAccess ...	XTA_XML Unit A...	\\Xstore58320\XT...	file	Transfer file to Avid	Successful
tm01 XTAccess ...	XTA_XML Unit A...	\\Xstore58320\XT...	train	test1	Successful

New tabs will be kept if you close and re-open VEDIO. However, they can be closed by clicking the small cross next to their name.



### Important

You are allowed to apply an additional filter on a job parameter to the list. This filter will remain active in the tab in case you close and open VEDIO. So do not assume that the list displayed in the grid corresponds to the filter mentioned in the tab name and keep in mind that a filter may be enabled on a column heading.

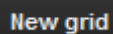
## CUSTOMIZED FILTER TAB

Once you have defined filters and search terms, you may want to save them for later use. To do so, proceed as follows:

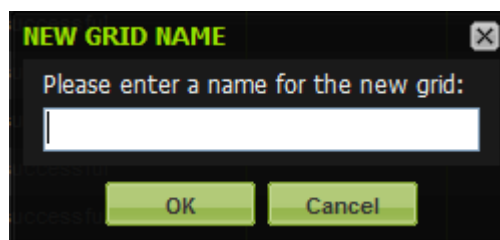
1. Define your search criteria. This can be a combination of filters, as explained in section 'Combination of Filters' on page 32.

For example, press the **Successful** quick filter button and select **Avid** from the Job Type options list.

2. Click the **New Grid** button at the bottom of the grid:



The New Grid Name window opens:



3. Enter a name for the new tab.  
In the example, you can enter 'Successful to Avid'.

4. Click OK.

A new tab entitled as the chosen name appears and list the jobs corresponding to the search criteria selected in step 1.



### Important

There is no automatic link between the selected search criteria and the created grid. So, if you modify the search criteria previously saved in a new grid, VEDIO will recall the last selected filter(s), not those defined at the grid creation.

If you clear all the filters defined, you will obtain the same complete list as in the General tab.

# Regional Contacts

---

## AMERICA (NORTH & LATIN)

---

EVS Americas East Coast	Tel: +1 818 846 9600 Fax: +1 818 846 9601	usa@evs.tv
EVS Americas West Coast	Tel: +1 973 575 7811 Fax: +1 973 575 7812 Tech. line: +1 973 575 7813	usa@evs.tv USAsupport@evs.tv
EVS Canada	Tel: +1 514 750 7544 Fax: +1 514 750 7518 Tech. line: +1 973 575 7813	usa@evs.tv USAsupport@evs.tv

---

## ASIA & PACIFIC

---

EVS Australia	Tel: +61 02 9452 8600 Fax: +61 02 9975 1368 Mobile: +61 420 307 387	sales@evs-asia.com.hk
EVS China	Tel: +86 10 6808 0248 Fax: +86 10 6808 0246 Tech. line: +86 139 1028 9860	evschina@evs.tv
EVS Hong-Kong	Tel: +852 2914 2501 Fax: +852 2914 2505 Tech. line: +852 9401 2395	sales@evs-asia.com.hk
EVS India	Tel: +91 22 6697 2999 Fax: +91 22 2673 2092 Mobile: +91 98 9017 5958	sales@evs-asia.com.hk

---

## EUROPE, MIDDLE EAST & AFRICA

---

EVS Belgium Headquarters	Tel: +32 (0) 4 361 7000 Fax: +32 (0) 4 361 7099 Tech. line: +32 (0) 495 284 000	support@evs.tv sales@evs.tv marketing@evs.tv
EVS Brussels	Tel: +32 (0) 2 421.78.70 Fax: +32 (0) 2 421.78.79	evsbrussels@evs.tv
EVS Deutschland	Tel: +49 (0) 89 4111 949 00 Fax: +49 (0) 89 4111 949 99 Tech. line: +49 (0) 89 4111 949 77	germany@evs.tv
EVS France	Tel: +33 1 46 99 9000 Fax: +33 1 46 99 9009 Tech. line: +33 1 46 99 9003	france@evs.tv

---

---

**EUROPE, MIDDLE EAST & AFRICA**

---

EVS Iberica	Tel: +34 91 490 3930 Fax: +34 91 490 3939 Tech. line: +34 91 490 3933	iberica@evs.tv
EVS Italy	Tel: +39 030 296 400 Fax: +39 030 294 3650 Tech. line: +39 334 631 1493	italy@evs.tv
EVS Middle East	Tel: +971 4 365 4222 Fax: +971 4 425 3501 Mobile: +971 50 887 8758	middle-east@evs.tv
EVS UK	Tel: +44 (0) 1372 387 250 Fax: +44 (0) 1372 387 269 Tech. line: +44 (0) 1372 387 266	uk@evs.tv

---

**EVS Broadcast Equipment**

Liège Science Park  
16, rue Bois St Jean  
B-4102 Ougrée  
Belgium



Corporate  
Headquarters  
**+32 4 361 7000**

North & Latin America  
Headquarters  
**+1 973 575 7811**

Asia & Pacific  
Headquarters  
**+852 2914 2501**

Other regional offices  
available on  
**[www.evs.tv/contact](http://www.evs.tv/contact)**



To learn more about EVS go to **[www.evs.tv](http://www.evs.tv)**