



4CH SD Card Mobile DVR User Manual

H.264 Compression

1CH~4CH Video Input/Output

CIF/HD1/D1 Resolution (PAL/NTSC)



Further (China) Technology Company Limited

Email: phoebe@fther.com.cn

MSN: furtherchina@hotmail.com

<http://fther.en.alibaba.com/>

Tel: (86-769)87930500

Fax: (86-769)87900163

Address: 8th Floor, Wenhua Building

Tangxia Road 120, Tangxia Town

Dongguan City

Guangdong Province

China

1. Product Introduction

1.1 Product Overview

FTH-DVR-D Mobile DVR is a high cost-effective and good functional scalability device for vehicle monitoring. It is introduced ARM+DSP high-speed dual-core processor and embedded operating system, with the advanced H.264 video compression/ decompression, network technique, GPS positioning, to playback or remotely manage video surveillance.

- Wide voltage
- Super shock-proof
- Store video by SD card

1.2 Main Function

- H.264 compression supports 1CH to 4CH video. SD card stores DVR video, CIF, HD1, D1 resolutions are optional. Automatic adjusting video data according to sensor information to save SD card space. Video playback supports sensor searching playback or reads video by general PC.
- Up to four sensor input interfaces and two alarm outputs, it supports to collect most car sensor data, including switching door, speed, braking etc. User can adjust video data size automatically and search video conveniently based on the information.
- Wireless GPS/3G is available for recording geographic coordinates, speed, time, real-time video transmission etc.
- RJ45 10/100M adapts to net connect, and it's convenient to transmit data and extend 3G network.
- Extension interface includes USB interface, RS232 interface, RS485 interface.

1.3 Parameters

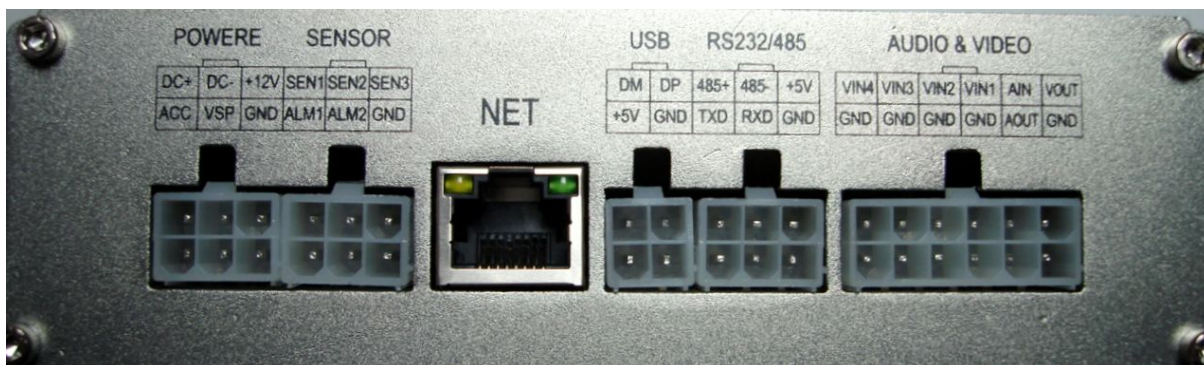
Item	Performance	Parameter
System	Language	Chinese/English
	Interface	OSD Interface
	Password security	Administrator manages password (No changing the content after setting password by administrator)
Video	Video input	4CH video input, 1.0V, p-p, impedance 75 Ω
	Video output	1CH video output, 1.0V, p-p, impedance 75 Ω
	Video playback	1 or 4 screens playback
	Video standard	PAL , 25FPS, CCIR625, 50 fields NTSC, 30FPS, CCIR525, 60 fields
Audio	Audio input	4CH audio input (1CH~4CH optional), impedance 600 Ω , PC player can choose turn on or turn off audio channel.
	Basic output level	1V-2V
	Mode	Record audio and video together
	Audio compression	ADPCM/G .726

Image processing and storage	Image compression	H .264, VBR
	Video resolution	CIF/HD1/D1(Optional)
	Audio streaming standard	ADPCM
	Video quality	CIF: 256Kbps-1.5Mbps, 1~8 levels (1 is the best) HD1: 600Kbps-2.5Mbps, 1~8 levels (1 is the best)
	Audio bit rate	8KB/s
	Video storage	1 or 2 SD Cards (cycle recording)
Car black box	Input and output	3 level inputs, 1 pulse input, 2 level outputs
Communication interface	Serial interface	Support one RS232 interface, refer to DB44 standard
	Serial interface	Support one RS485 interface, refer to DB44 standard
	USB interface	Support one USB1.1 interface, refer to DB44 standard
	Network interface	RJ45, 10M/100M adaptive network interface(for 3G extension)
GPS/3G	Built-in or external GPS/3G module, record the geographic coordinates, speed into coding stream, upload pictures wirelessly are available.	
Software	Playback	Automatic playback 4CH video file, automatically playback video by video
Software upgrade	Support SD card/USB to upgrade	
Others	Power input	DC: +9V~45V
	Power output	+12V@2A
	Working temperature	-25°C-----70°C

1. Product appearance and cable diagram

2.1 Cable diagram

Back view panel



Cable



Cable of power input/output



Cable of video input/output

Interface function

Interface	Name	Description
Power	DC+	Positive power input : -9V~54V connects with vehicle battery positive
	DC-	Negative power input connects with vehicle power negative
	ACC	Video control line connects with car key ACC
	+12V	Positive power output connects with camera and voice recorder
	GND	Negative power output connects with camera and voice recorder
	VSP	Speed signal input connects with car speed sensor signal wire

Sensor	SEN1~SEN3	Alarm input. Such as braking, reversing, open or close door etc.
	ALM1,ALM2	Alarm output. Such as indicator, buzzer etc.
	GND	Alarm input and output
Communication Interface	USB/RS232/485	Expand USB, network functions etc.
AUDIO& VIDEO	VIN1~VIN4	1~4CH video output connects with camera
	4GND	1~4CH video output connects with camera
	AIN	Audio input connects with voice recorder
	GND	Audio output connect with audio device
	VOUT	Video output connects with monitor. There is video output at the front and back of DVR.
	GND	Audio and video output

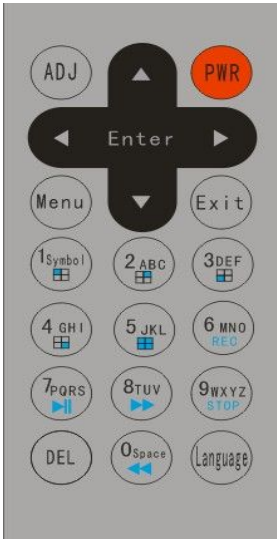
Appearance



1 or 2 SD card slots, 1 IR and 1 video output at the front of Mobile DVR.

Basic Operation Manual

3.1 Remote control



Name	Function
PWR	Turn on or turn off device
ADJ	Adjust brightness, contrast, color parameters
▲	Up
▼	Down
▶	Right/VOL/Next
◀	Left/VOL/Back
Menu	Switch to the System SET interface
Exit	Back to the previous interface / Stop play
Enter	Select or confirm
1	1 / Punctuation /Channel 1
2	2 / ABC/Channel 2
3	3 / DEF/Channel 3
4	4 / GHI/Channel 4
5	5 / JKL/4 CH Together
6	6 / MNO/Video
7	7 / PQRS/Play or pause
8	8 / TUV/ Fast Forward
9	9 / WXYZ/Stop Recording
0	0 / Space/ Fast Rewind
DEL	Delete information

Language	English and Chinese switch for number, small letter, big letter
----------	---

Note: Multi-function button in green on the remote control

- 1、 Only press the menu button to enter the system setup screen
- 2、 Button 1: In the System SET, can enter number 1 and punctuation; when exit System SET, can switch to Channel 1.
- 3、 Button 2: In the System SET, can enter number 2 and ABC; when exit System SET, can switch to Channel 2.
- 4、 Button 3: In the System SET, can enter number 3 and DEF; when exit System SET, can switch to Channel 3.
- 5、 Button 4: In the System SET, can enter number 4 and GHI; when exit System SET, can switch to Channel 4.
- 6、 Button 5: In the System SET, can enter number 5 and JKL; when exit System SET, can switch to 4CH video together.
- 7、 Button 6: In the System SET, can enter number 6 and MNO; when exit System SET, can control the video manually.
- 8、 Button 7: In the System SET, can enter number 7 and PQRS; when exit System SET, can replay and pause.
- 9、 Button 8: In the System SET, can enter number 8 and TUV; when exit System SET, can fast-forward play.
- 10、 Button 9: In the System SET, can enter number 9 and WXYZ; when exit System SET, can stop recording.
- 11、 Button 0: In the System SET, can enter numbers 0 and space; when exit System SET, can fast rewind playback.
- 12、 Button Delete: In the System SET, short pressing to delete a single character, long pressing to delete all.
- 13、 Input method / Language key: In the System SET, can switch number, little letter, big letter, English and Pinyin; when exit System SET, long pressing up to 3 seconds is switching languages.

3.2 Turn on and login system

3.2.1 Turn on System

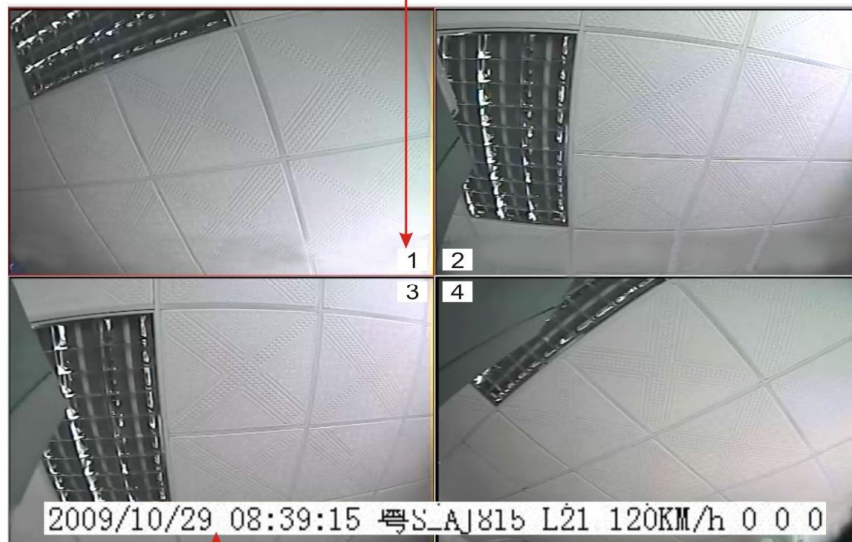
Connect DVR power cable with vehicle DC 12V, then system is standby. Turn on system is decided by User SET (Please see User SET, Basic SET and Video SET). Usually, vehicle in Power Mode DLI can provide power to the DVR, the sign of turn on is as follows.



Video out displays customer logo in the screen or customer parameter interface, as long as the vehicle's power does not turn off, the camera recording signal is continuous. When vehicle power is turned off, DVR can keep recording video.

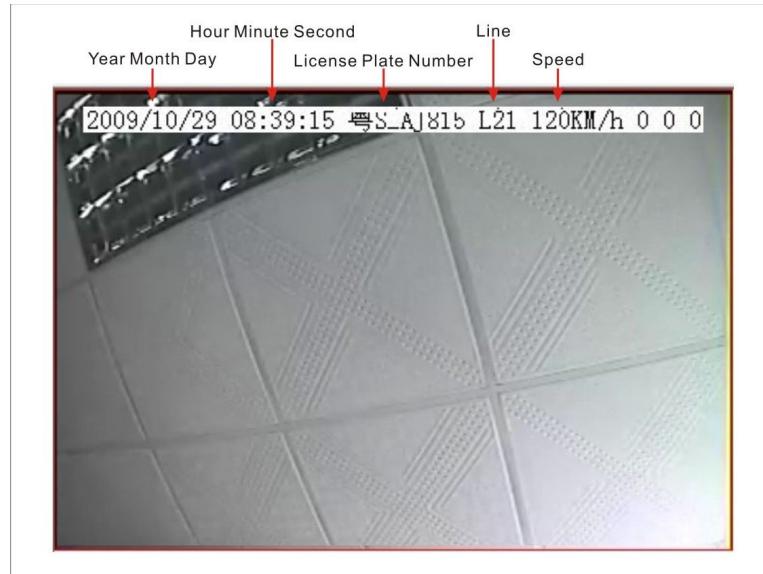
3.2.2 The screen after turn on

The background is white when it is not recording the video, 1 2
while it turns red when recording. 1 2
3 4



These words are decided by remote controller to switch them to display or not, that is, click ENTER button to display, then click ENTER again not to display.

3.2.3、Video file

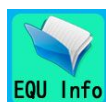
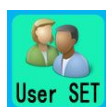


System access permission

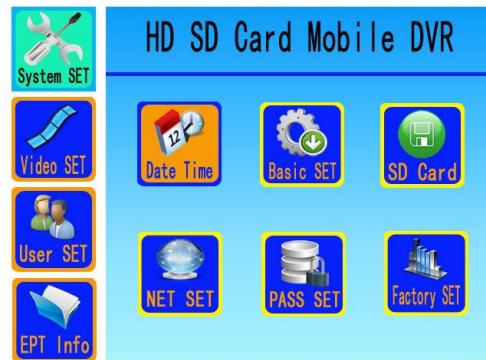
- 1) When the Password Valid is set "Close": Press【Menu】on remote control, then can access system main menu directly and any change can be made to DVR.
- 2) When the Password Valid is set "Open": Only correct password can enter the main menu and make any change to DVR.

System check and set

Once turn on DVR, the system enters administration interface, as shown below: main menus are on the left. "System SET" is selected as the first menu by default.



Press "Enter" and enter the following screen: default selected the first menu, such as: "Date Time" is selected.

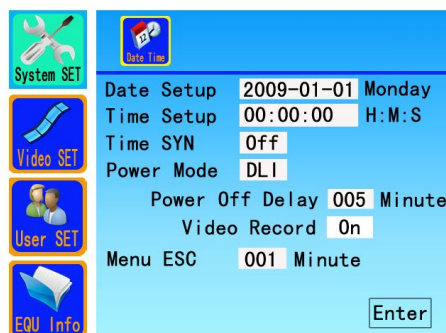


- Arrow keys to make item selection.
- 【Enter】 to choose items.
- 【Exit】 to exit the menu.

3.3.1 System SET

3.3.1.1 Date and time SET

Go to "System SET" with up and down arrow keys, then go to "Date Time" with left and right arrow keys, then click on 【Enter】 , into the following interface:



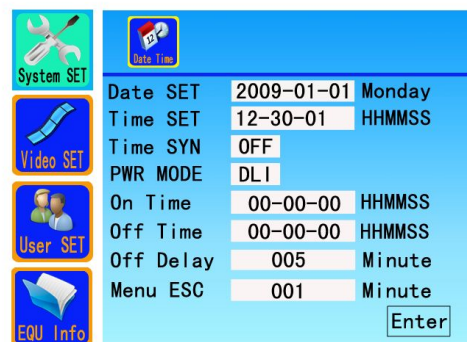
- Move arrow keys to appropriate position, if the color changes, setting can work.
- Date SET: Six numbers mean "Year" "Month" "Day", which are presented by two numbers. Such as, January 1st, 2009, "2009-01-01", year range from 2000 to 2099, can be set by remote control.
- Time SET: Six numbers mean "Hour" "Minute", "Second". 24-hour system, move arrow keys appropriate position and enter numbers with remote control.
- Week: The system automatically set according to the date.

- Time SYN: Select "GPS" "NTP" "Off" mode with remote control.
- GPS: When system has a GPS module, DVR time is the same as GPS.
- NTP: Firstly select NTP server IP address in the "Network SET" menu, and IP address must can login NTP server with permission and keep network smooth. Meeting the above conditions, DVR will automatically set time with network.
- On /Off Mode: There are three modes: "DLI/ Power off delay", "DLI/ On time to off time", "Off": ("Off" is defaulted), pressing the left and right to choose.

1、DLI/ Power off delay (default): Vehicle ignition signal (DC high level turn on, low level turn off) turns on or turns off, power off delay and video delay are available.



2、DLI/ On time to off time: In the "off" mode, on time and off time can be set.



3、Off: Turn on or turn off with remote control.



- ### 3.3.1.2 Basic SET

System SET

Video SET

User SET

EQU Info

Data Time

Video Format PAL


Record Mode Auto

Recording Time 5 Minutes


Machine Code 2009110001

Enter

- Timer: When it is Timer, DVR starts to record video according to the setting time. Please see following picture:




System SET




REC 1 min


DATE		TYPE	PERIOD1	PERIOD2
EVERY	TIMER	00:00-23:59	00:00-00:00	
-- --	TIMER	00:00-00:00	00:00-00:00	
-- --	TIMER	00:00-00:00	00:00-00:00	
-- --	TIMER	00:00-00:00	00:00-00:00	
-- --	TIMER	00:00-00:00	00:00-00:00	
-- --	TIMER	00:00-00:00	00:00-00:00	
-- --	TIMER	00:00-00:00	00:00-00:00	
-- --	TIMER	00:00-00:00	00:00-00:00	
-- --	TIMER	00:00-00:00	00:00-00:00	



Video SET



User SET



EPT Info

APPLY

- Move arrow keys to appropriate position, if the color changes, setting can work.
 - 1、Date: 【Enter】 to select "every day" "Monday" "Tuesday" "Wednesday" "Thursday" "Friday" "Saturday" "Sunday".
 - 2、Type: 【Enter】 to select "Timer" "Alarm," "Mobile".
 - 3、PERIOD 1: Use number keys to start and stop recording time.
 - 4、PERIOD 2: Use number keys to start and stop recording time..
- Packing time: It means the time length of each video file, 【Enter】 to select "5" "15" "30" "60" minutes.
- DVR code: It can be entered up to 11 numbers for each DVR.
- Enter: Press [Enter] on remote control or "Apply" on the screen to save setting and return to previous menu.
- Exit: In the setup process, pressed remote control "Exit" button at any time, system will not save setting and return to previous menu.

3.3.1.3 SD Card

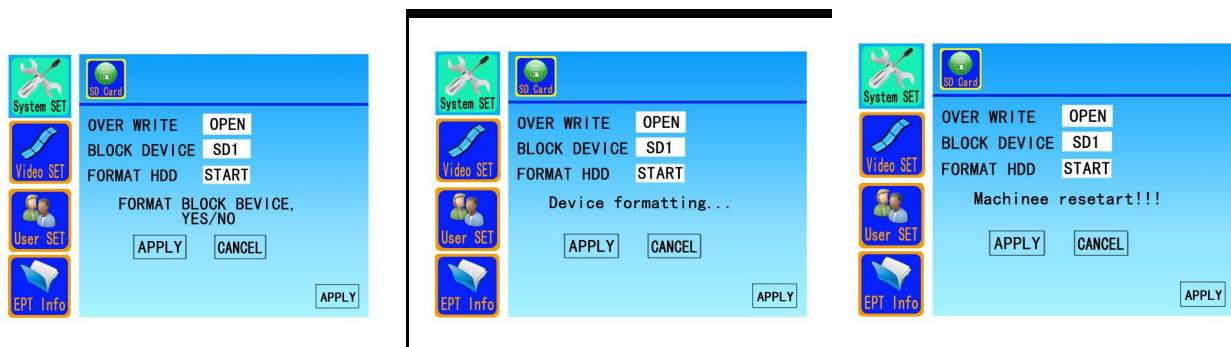
Go to "System SET" with up and down arrow keys, then go to "SD Card" with left and right arrow keys, then click on 【Enter】 , into the following interface:



- Move arrow keys to appropriate position, if the color changes, setting can work.
- OVER WRITE: 【Enter】 to select "Open" and "Close".
 - Open: When SD card is full, it will cycle recording. The oldest video file will be covered by the latest video file.
 - Close: SD card stops recording after full.
- "BLOCK DEVICE": 【Enter】 to select "SD1" "SD2" "U disk"
- SD1: When put two SD cards at the same time, the video file is stored by SD1. If SD1 is fully, it is continues stored video by SD2. When two cards are full, it starts to cover

video by SD1.

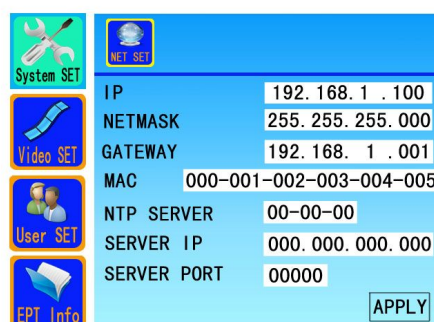
- SD2: When put two SD cards at the same time, the video file is stored by SD2. If SD2 is fully, it is continues stored video by SD1. When two cards are full, it starts to cover video by SD2.
- U disk: In standby mode, it is useful when being upgraded or built-in 3G module.
Note: If just one SD card in the DVR, the SD card will cycle recording.
- "Format": **【Enter】** to select "APPLY" or "CANCEL"
- Start: Press **【Enter】** and start, system will format video in the "BLOCK DEVICE". At the same time, it appears format information and successful restart, please see following three pictures :



- Enter: Press [Enter] on remote control or "Apply" on the screen to save setting and return to previous menu.
- Exit: In the setup process, pressed remote control "Exit" button at any time, system will not save setting and return to previous menu.

3.3.1.4 NET SET

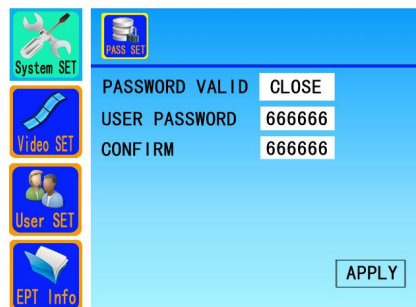
Go to "System SET" with up and down arrow keys, then go to "NET SET" with left and right arrow keys, then click on **【Enter】** , into the following interface:



- Move arrow keys to appropriate position, if the color changes, setting can work.
- IP: IP is set directly by number keys on remote control.
- Net Mask: Net Mask is set directly by number keys on remote control.
- Gateway: Set directly with number keys on remote control.
- MAC: Set directly with number keys on remote control.
- NTP Server: Set directly with number keys on remote control.
- Server IP: Set directly with number keys on remote control.
- Server Port: Set directly with number keys on remote control.
- Enter: Press [Enter] on remote control or "Apply" on the screen to save setting and return to previous menu.
- Exit: In the setup process, pressed remote control "Exit" button at any time, system will not save setting and return to previous menu.

3.3.1.5 PASS SET

Go to "System SET" with up and down arrow keys, then go to "PASS SET" with left and right arrow keys, then click on **【Enter】**, into the following interface:



- Move arrow keys to appropriate position, if the color changes, setting can work.
 Password valid: **【Enter】** to select the "Open" and "Close".
 Close: When password valid is "Close", press **【Menu】** on remote control, then can enter system main menu and change DVR parameters.
 Open: When the password valid is "Open", only correct password can access the main menu and change DVR parameters.
- User Password: Enter numbers on remote control, default password is 666666;
- Confirm: Enter the user password once more.
- Enter: Press [Enter] on remote control or "Apply" on the screen to save setting and

return to previous menu.

- Exit: In the setup process, pressed remote control "Exit" button at any time, system will not save setting and return to previous menu.

3.3.1.6 Factory SET

Go to "System SET" with up and down arrow keys, then go to " Factory SET" with left and right arrow keys, then click on 【Enter】 , into the following interface:



- Move arrow keys to appropriate position, if the color changes, setting can work.
- Default Setup: Choose "Recover" and press Enter on remote control, all settings will become to factory defaults. Please see the following diagram:



- Export In Para: Put a SD card in the DVR, and enter "Export In".
- Export Out Para: Put a SD card in the DVR, and enter "Export Out".
- Enter: Press [Enter] on remote control or "Apply" on the screen to save setting and return to previous menu.
- Exit: In the setup process, pressed remote control "Exit" button at any time, system will not save setting and return to previous menu.

3.3.2 Video SET

Go to "Video SET" with up and down arrow keys, then click on **【Enter】**, into the following interface:



3.3.2.1 Video PMT

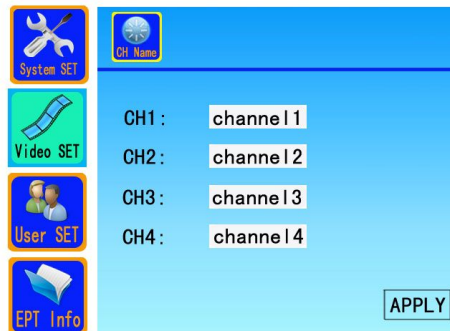
Go to "Video SET" with up and down arrow keys, then go to "Video PMT" with left and right arrow keys, then click on **【Enter】**, into the following interface: (Parameters default settings are: Resolution CIF, Frame Rate 12, Quality 06, Audio Open.)



- Move arrow keys to appropriate position, if the color changes, setting can work.
- Channel: 4 channels in total, each channel works independently, select "Channel 1,2,3,4" with arrow keys or close video.
- RES. : Select "CIF" "D1" "HD1" by **【Enter】** .
- Frame Rate: Select "25" "12" "6" "3" "1" by **【Enter】** .
- Quality: Select "1-6" by **【Enter】** , 1 is best.
- Audio: Select "Open" or "Close" by **【Enter】** .
- Enter: Press [Enter] on remote control or "Apply" on the screen to save setting and return to previous menu.
- Exit: In the setup process, pressed remote control "Exit" button at any time, system will not save setting and return to previous menu.

3.3.2.2 CH Name

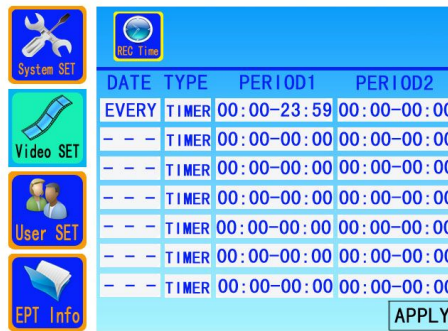
Go to "Video SET" with up and down arrow keys, then go to "CH Name" with left and right arrow keys, then click on **【Enter】** , into the following interface:



- Move arrow keys to appropriate position, if the color changes, setting can work.
- Channel 1: Channel name is entered by remote control (Only Chinese and English are available)
- Channel 2: Channel name is entered by remote control (Only Chinese and English are available)
- Channel 3: Channel name is entered by remote control (Only Chinese and English are available)
- Channel 4: Channel name is entered by remote control (Only Chinese and English are available)
- Enter: Press [Enter] on remote control or "Apply" on the screen to save setting and return to previous menu.
- Exit: In the setup process, pressed remote control "Exit" button at any time, system will not save setting and return to previous menu.

3.3.2.3 REC Time

Go to "Video SET" with up and down arrow keys, then go to "REC Time" with left and right arrow keys, then click on **【Enter】** , into the following interface:



- Move arrow keys to appropriate position, if the color changes, setting can work.
- Date: 【Enter】 to select "every day" "Monday" "Tuesday" "Wednesday" "Thursday" "Friday" "Saturday" "Sunday".
- Type: 【Enter】 to select "Timer" "Alarm," "Mobile".
- PERIOD 1: Use number keys to start and stop recording time.
- PERIOD 2: Use number keys to start and stop recording time.
- Enter: Press [Enter] on remote control or "Apply" on the screen to save setting and return to previous menu.
- Exit: In the setup process, pressed remote control "Exit" button at any time, system will not save setting and return to previous menu.

3.3.2.4 Vehicle SET

Go to "Video SET" with up and down arrow keys, then go to "Vehicle SET" with left and right arrow keys, then click on 【Enter】 , into the following interface:



- Move arrow keys to appropriate position, if the color changes, setting can work.
- Line: Enter vehicle line by remote control. (English and Chinese are available)
- Vehicle: Enter vehicle license plate number by remote control. (English and Chinese are available)
- Company: Enter company name by remote control. (English and Chinese are available)

- Enter: Press [Enter] on remote control or "Apply" on the screen to save setting and return to previous menu.
- Exit: In the setup process, pressed remote control "Exit" button at any time, system will not save setting and return to previous menu.

3.3.3 User SET

Go to "User SET" with up and down arrow keys, then click on **【Enter】** , into the following interface:



3.3.3.1 Sensor SET

Go to "User SET" with up and down arrow keys, then go to "Sensor SET" with left and right arrow keys, then click on **【Enter】** , into the following interface:



- Move arrow keys to appropriate position, if the color changes, setting can work.
- Alarm SET: SEN1、SEN2、SEN3
- Enable:

Open: Alarm signal input is open, video screen is "I".

Close: Alarm signal input is closed, video screen is "O".

- Name:
Three alarm inputs "SEN1、SEN2、SEN3" can be chosen by remote control.
- OSD:
"O" means alarm signal input.
"I" means no alarm signal input.
- Enter: Press [Enter] on remote control or "Apply" on the screen to save setting and return to previous menu.
- Exit: In the setup process, pressed remote control "Exit" button at any time, system will not save setting and return to previous menu.

3.3.3.2 Sensor SET

Go to "User SET" with up and down arrow keys, then go to "Sensor SET" with left and right arrow keys, then click on **【Enter】**, into the following interface:



- Move arrow keys to appropriate position, if the color changes, setting can work.
- Two-alarm output: ALM1、ALM2.
- Enable: Select "Open" or "Close" by [Enter].
- Name: SO1 , SO2.
- OSD:
"O" means alarm signal input.
"I" means no alarm signal input.
- Enter: Press [Enter] on remote control or "Apply" on the screen to save setting and return to previous menu.
- Exit: In the setup process, pressed remote control "Exit" button at any time, system will not save setting and return to previous menu.

3.3.3.3 Vehicle Speed

Go to "User SET" with up and down arrow keys, then go to "Vehicle Speed" with left and right arrow keys, then click on **【Enter】** , into the following interface:



- Move arrow keys to appropriate position, if the color changes, setting can work.
- Eigen Value: Enter speed value, For example: 040 means 40 km/h. Turn on vehicle speed up to 40 km / h, and continue half a minute.
- Pulses: After continue half a minute, press the "Check", then DVR automatically obtain pulses, such as 1000.
- Speed: DVR automatically obtains pulses and calculates corresponding speed with the car engine speed.
- Enter: Press [Enter] on remote control or "Apply" on the screen to save setting and return to previous menu.
- Exit: In the setup process, pressed remote control "Exit" button at any time, system will not save setting and return to previous menu.

3.3.3.4 GPS Speed

Go to "User SET" with up and down arrow keys, then go to "GPS Speed" with left and right arrow keys, then click on **【Enter】** , into the following interface:



- Move arrow keys to appropriate position, if the color changes, setting can work.
- Speed Source: Select "vehicle" "GPS" with arrow keys. When there is "GPS", the "vehicle" speed will automatically close; when there is no GPS, the "vehicle" speed works.
- Speed: It means GPS speed.
- Limit: Limiting speed is set by remote control. If vehicle speed exceeds, it alarms.
- Enter: Press [Enter] on remote control or "Apply" on the screen to save setting and return to previous menu.
- Exit: In the setup process, pressed remote control "Exit" button at any time, system will not save setting and return to previous menu.

3.3.4 EPT Info

Go to "EPT Info" with up and down arrow keys, then click on **【Enter】**, into the following interface:



3.3.4.1 Time Search

Go to "EPT Info" with up and down arrow keys, then go to "Time Search" with left and right arrow keys, then click on **【Enter】**, into the following interface:



- Move arrow keys to appropriate position, if the color changes, setting can work.
- Type: Select the video type by 【Enter】 .
- Date: Enter the date of video file by remote control.
- Time: Enter the time of video file by remote control.
- Search: Press 【Enter】 and search video.
- UP & DOWN: Press Up and Down to search video file.
- Exit: In the setup process, pressed remote control "Exit" button at any time, system will not save setting and return to previous menu.

3.3.4.2 Other Info

Go to "EPT Info" with up and down arrow keys, then go to "Other Info " with left and right arrow keys, then click on 【Enter】 , into the following interface:



- HDD INFO:
 - Name: SD1、SD2、U disk
 - Status: HDD working state.
 - Capacity: Total capacity of HDD.
 - Space: Remain capacity of HDD.
- Software Version: DVR software version
- MCU Version: MCU software version
- Enter: Press [Enter] on remote control or "Apply" on the screen to save setting and return to previous menu.
- Exit: In the setup process, pressed remote control "Exit" button at any time, system will not save setting and return to previous menu.