

Trademarks

Copyright © PLANET Technology Corp. 2004.

Contents subject to revision without prior notice.

PLANET is a registered trademark of PLANET Technology Corp. The information in this manual is subject to change without notice. All other trademarks belong to their respective owners.

FCC Warning

This equipment has been tested and found to comply with the regulations for a Class B digital device, pursuant to Part 15 of the FCC Rules. These limits are designed to provide reasonable protection against harmful interference when the equipment is operated in a commercial environment. This equipment generates, uses, and can radiate radio frequency energy and, if not installed and used in accordance with this user's guide, may cause harmful interference to radio communications. Operation of this equipment in a residential area is likely to cause harmful interference, in which case the user will be required to correct the interference at his own expense.

CE Mark Warning

This is a Class B product. In a domestic environment, this product may cause radio interference, in which case the user may be required to take adequate measures.

REVISION

User's manual for PLANET Intelligent Media Converter

For Models: WFT-201, WFT-202, WFT-202S15



Rev 2.0 (Nov. 2004)

Part No. EM-WFT20xv2



Table of Contents

Chapter 1	INTRODUCTION	1
1.1	Overview of this User's Manual	1
Chapter 2	UNPACKING AND SETUP	3
2.1	Unpacking	3
2.2	Setup	3
Chapter 3	IDENTIFYING EXTERNAL COMPONENTS	5
3.1	Front Panel	5
3.2	LED Indicators	6
Chapter 4	CONFIGURE THE MEDIA CONVERTER	7
4.1	Configure Through Terminal Emulator/TELNET Program	7
4.2	Configure Through Web browser	11
Chapter 5	SPECIFICATIONS	17



Chapter 1 **Introduction**

The Intelligent 10/100Base-TX to 100Base-FX Media Converter series (WFT-20x) support the conversion of different media between the copper Fast Ethernet (10/100Base-TX) and fiber Fast Ethernet (100Base-FX).

The WFT-20x had built-in Micro Processor to monitor the WFT-20x status and to configure the device's advanced function. Through in-band management via TELNET, Web Browser and SNMP management utility or the out-band management via RS-232 console to monitor the status.

The WFT-20x supports SNMP agent to advise the network manager while the device occur an abnormal.

1.1 Overview of this User's Manual

Introduction. Describes the WFT-20x and its features.

Unpacking and Setup. Helps you get started with the basic installation of the WFT-20x.

Identifying External Components. Describes the front panel and LED indicators of the WFT-20x.

Configure The Media Converter. Helps you how to configure the WFT-20x.

Technical Specifications. Lists the technical (general, physical and environmental, performance and Routers settings) specifications of the WFT-20x.



This page is intentionally left blank



Chapter 2 **Unpacking and Setup**

This chapter provides unpacking and setup information for the WFT-20x.

2.1 Unpacking

Open the box of the WFT-20x and carefully unpack it. The box should contain the following items:

- One Intelligent Media Converter
- One Power Cord
- One RS-232 Cable (9 pin female to 9 pin female)
- Rubber Feet
- CD-ROM
- This User's Manual

If any item is found missing or damaged, please contact your local reseller for replacement.

2.2 Setup

The setup of the WFT-20x can be performed using the following steps:

- The power outlet should be within 1.82 meters (6 feet) of the WFT-20x Converter.
- Visually inspect the AC power cord and make sure that it is fully secured to the device.

Make sure that there is proper heat dissipation from and adequate ventilation around the WFT-20x. Do not place heavy objects on the WFT-20x.



This page is intentionally left blank



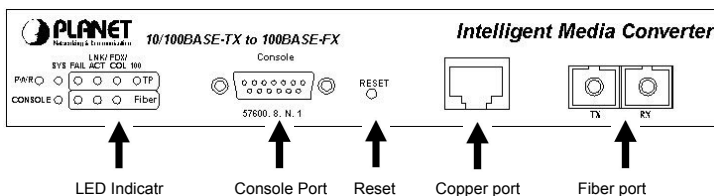
Chapter 3

Identifying External Components

This section identifies all the major external components of the WFT-20x. The front panel is shown, followed by a description of each panel feature. The indicator panel is described in detail in the next chapter.

3.1 Front Panel

The figure below shows the front panels of the WFT-20x.



- LED Indicator Panel

Refer to the next section for detailed information.

- Console Port (RS-232)

To configure the device through Terminal Emulation Program via the RS-232 serial port.

- Reset

To reset all the setting in case of messy setting.

- 10/100Base-TX Twisted-Pair Port

The 10/100Mbps Fast Ethernet port supports automatic MDI/MDIX crossover detection function gives true 'plug and play' capability without the need of confusing crossover cables or crossover ports.

- Fiber Port

To connect with fiber optic cable to the fiber port.

3.2 LED Indicators

PWR	Lights Green	power is inserted
SYS (System CPU)	Lights Amber	power is inserted and it is fail
CONSOLE	Blinks Green	the data is transmitting
	Blinks Amber	transmitting the wrong data
FAIL (TP/Fiber)	Lights Amber	the link is fail
LNK/ACT (TP/Fiber)	Lights Green	when link to networking Ethernet
	Blinks Green	when link is activity
FDX/COL (TP/Fiber)	Lights Green	link is in full duplex mode
	Lights Off	link is in half duplex mode
	Blinks Green	there is collision happens
100 (Speed for TP)	Lights Green	the link speed at 100Mbps
	Lights Off	the link speed at 10Mbps

Power Notice:

- 1.The device is a power-required device, it means, it will not work till it is powered. If your networks should active all the time, please consider using UPS (Uninterrupted Power Supply) for your device. It will prevent you from network data loss or network downtime.
- 2.In some area, installing a surge suppression device may also help to protect your switch from being damaged by unregulated surge or current to the media converter.

Chapter 4

Configure The Media Converter

This chapter helps you how to configure the WFT-20x.

4.1 Configure Through Terminal Emulator/TELNET Program

4.1.1 Terminal Emulator program setting

The WFT-20x can be accessed using a terminal or terminal emulator attached to the RS-232 serial port.

1. Locate correct DB9 serial port cable with female DB9 connector.
2. Attach the DB9 serial port female cable connector to the male DB9 serial port connector on the chassis system.
3. Attach the other end of the DB9 serial port cable to a remote the workstation.
4. By default, the WFT-20x uses the following serial port parameter values:

Bits per second	57600
Stop bits	1
Data bits	8
Parity	NONE
Flow Control	NONE

The default Login name and password is both "**root**".

4.1.2 TELNET program setting

The WFT-20x system can be accessible using TELNET through LAN.

1. Run TELNET program.
2. Enter the IP address "192.168.1.1" (the factory-default IP address setting).
3. The default Login name and password are both "**root**".

4.1.3 Configure the Intelligent WFT-20x

4.1.3.1 Main Menu

The main menu shows the setting of the File, General Configuration, System Configuration, Device Configuration, SNMP Configuration and Device Status.

```
File
General Configuration
System Configuration
Device Configuration
Snmp Configuration
Device Status
```

4.1.3.2 Files

To set the Software Reboot, Factory Reset and Image Update.

```
Software Reboot
Factory Reset
Image Update
```

4.1.3.2.1 Software Reboot

After configuring the software, you need to reboot the device by pressing the Software Reboot to change the setting.

4.1.3.2.2 Factory Reset

This function is to set the device back to the factory default setting in case of the messy setting.

4.1.3.2.3 Image Update

The section is to set the TFTP Server IP Address first, and the default address was set to "192.168.1.2". The Image File can be updated by uploading the image file from the TFTP server.

```
TFTP Server IP Address :[192.168.1.2_ ]
Update File :[mcimage
```

 NOTE:

The content of the image file will write the whole firmware of the management module, please be sure that the image file is correct.

4.1.3.3 General Configurations

This page is to configure the device name, passwords and location.

```
Hardware revision 01
BIOS revision 1.00
Firmware revision 1.00
Change Password:[
Confirm Password:[
System Name:[
Location:[
```

- Hardware revision: noted the version of the hardware.
- BIOS revision: noted the version of the BIOS.
- Firmware revision: noted the version of the firmware.
- Change Password: the changing of the admit password.
- Confirm Password: to confirm the setting of admit password.
- System Name: to authorize the device system name.
- Location: to show the device where it is located.

4.1.3.4 System Configurations

This page is for setting the MAC Address, IP Address, Subnet Mask and Gateway Address.

```
MAC Address : 00:40:05:13:57:90
IP Address  : [172.16.2.12  ]
Subnet Mask : [255.255.0.0  ]
Default GW  : [172.16.1.254 ]
```


- MAC Address: will show out the MAC address of the device.
- IP Address: to allocate an IP address for the device, the default IP is "192.168.1.1".
- Subnet Mask: to set the Subnet Mask, the default is "255.255.255.0".
- Default Gateway: to set the gateway address, the default is "192.168.1.254".

4.1.3.5 Device Configurations

This page needs to configure the Copper and Fiber Setting.

```
10/100T-100SX v1.0
/Device Configuration
-----
Copper:  Auto Dup Speed Flow Control Enable
        [(Enable)] [(Full)] (100M) (Enable) (ON)
Fiber:   [(Full)]
```

- Copper Setting: to set the Auto-Negotiation Mode, Duplex mode, Speed, Flow Control and Link Enable setting.
- Auto-Negotiation: when set to "Auto", it will detect the speed from other end if it will be 10Mbps or 100Mbps and will set itself to be the same speed, and when set to "Force" then it can be only set to 100Mbps or 10Mbps.
- Duplex Mode: to set the device runs in Full Duplex mode or Half Duplex mode.
- Speed: to set the device to run in speed of 10Mbps or 100Mbps.
- Flow Control: to enable or disable to flow control of the device.
- Enable: to enable or disable the linkage of the copper (RJ45).
- Fiber Setting: to set the Duplex Mode of the Fiber to be Full duplex or Half duplex mode.

 NOTE: After configuring the system device, need to press the save button to save the setting.

4.1.3.6 SNMP Configurations

To set the SNMP setting on MIB Browser to monitor the device.

```
Get Community Name :[public ]
Set Community Name :[private ]
Trap Community Name :[public ]
Trap Host IP Address :[192.168.1.2 ]
Cold Start Trap :[Enable ]
Warm Start Trap :[Enable ]
Authentication Fail Trap :[Enable ]
MC Link Up Trap :[Enable ]
MC Link Down Trap :[Enable ]
MC Broken Trap :[Enable ]
```

- Get Community Name: to get the device community name (default = public).
- Set Community Name: to set the device community name (default = private).
- Trap Community Name: to authorize the device trap community name (default = public).
- Trap Host IP Address: to set the trap host IP address (same as monitoring station IP address).

- Cold Start trap: to set the trap for rebooting the device (default = enable).
- Authentication Fail Trap: to set the warning trap when the community name of the device and workstation are different (default = enable).
- MC Link Up Trap: to enable the trap that if other device has linked up.
- Warm Start Trap: to enable a trap that if the device was restart.
- MC Broken Trap: to enable the trap that announcing the WFT-20x was destruct.
- MC Link Down Trap: to enable the trap that if the linked of the device was pulled down.

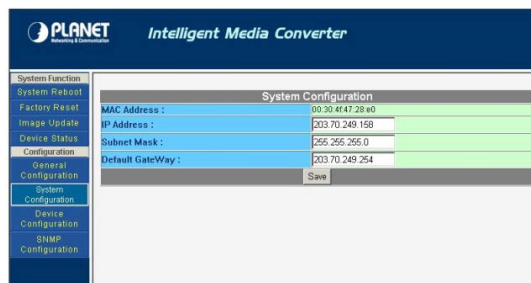
4.1.3.7 Device Status

This page shows that the device's copper and fiber linking status.

	Link	Speed	Duplex	Flow Control	Fail
Copper:	√	100M	F	√	×
Fiber:	×	*	*	*	√

4.2 Configure Through Web browser

1. Open up the Internet Web browser.
2. Enter the IP address <http://192.168.1.1> (the factory-default IP address setting) to the URL web address location.
3. Enter the user name and password you have configured (the default Login name and password are both "**root**").
4. The web configuration will be shown. Point the selections in the left side of the menu screen. The menu includes System Reboot, Factory Reset, Image Update, Device Status, General Configuration, System Configuration, Device Configuration and SNMP Configuration and that to be explained in the next section.



4.2.1 System Reboot

After configuring the converter, you need to reboot the device by pressing the System Reboot to access the new setting.



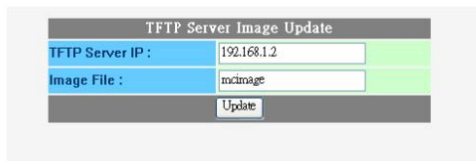
4.2.2 Factory Reset

This function is to set the device back to the factory default setting in case of the messy setting.



4.2.3 Image Update

This function allows you to update the firmware on the media converter. Please first setup a TFTP server and copy the firmware file to the server's directory. Enter the server's IP on the "TFTP Server IP" section the firmware file name on "Image File" section then click "Update" to update the converter's firmware. Please regularly check PLANET web site for any new available firmware.



 NOTE:

The content of the image file will write the whole firmware of the WFT-20x, please be sure that the image file is correct.

4.2.4 Device Status

This page shows that the device's copper and fiber linking status.

System Status					
	Link	Speed	Duplex	Flow Control	Fail
Copper:	v	100M	F	v	x
Fiber:	x	*	*	*	v

4.2.5 General Configuration

This page is to configure the device name, passwords and location.

General Configuration	
Hardware revision :	A1
BIOS revision :	1.01
Firmware revision :	1.02
Change Password :	****
Confirm Password :	****
System Name :	WFT-201
Location :	Factory1
<input type="button" value="Save"/>	

- Hardware revision: noted the version of the hardware.
- BIOS revision: noted the version of the BIOS.
- Firmware revision: noted the version of the firmware.
- Change Password: the changing of the administrator password.
- Confirm Password: to confirm the setting of administrator password.
- System Name: to authorize the device system name.
- Location: to show the device where it is located.

4.2.6 System Configuration

This page is for setting or displaying the MAC Address, IP Address, Subnet Mask and Gateway Address.

System Configuration	
MAC Address :	00 30 4f 47 28 e0
IP Address :	203.70.249.150
Subnet Mask :	255.255.255.0
Default GateWay :	203.70.249.254
<input type="button" value="Save"/>	

- MAC Address: will show out the MAC address of the device.
- IP Address: to allocate an IP address for the device, the default IP is "192.168.1.1".
- Subnet Mask: to set the Subnet Mask, the default is "255.255.255.0".
- Default Gateway: to set the gateway address, the default is "192.168.1.254".

4.2.7 Device Configuration

This page needs to configure the Copper and Fiber Setting.



The screenshot shows a configuration window titled "Configuration". It is divided into two main sections: "Copper Setting" and "Fiber Setting".

Copper Setting				
Auto Negotiation	Duplex	Speed	Flow Control	Enable
<input checked="" type="radio"/> Auto <input type="radio"/> Force	<input checked="" type="radio"/> Full <input type="radio"/> Half	<input checked="" type="radio"/> 100M <input type="radio"/> 10M	<input checked="" type="radio"/> Enable <input type="radio"/> Disable	<input checked="" type="radio"/> ON <input type="radio"/> OFF

The "Fiber Setting" section is partially visible below the copper settings.

Fiber Setting	
Duplex	
<input checked="" type="radio"/> Full <input type="radio"/> Half	

A "Save" button is located at the bottom of the configuration window.

- Copper Setting: to set the Auto-Negotiation Mode, Duplex mode, Speed, Flow Control and Link Enable setting.
- Auto-Negotiation: when set to "Auto", it will detect the speed from other end if it will be 10Mbps or 100Mbps and will set itself to be the same speed, and when set to "Force" then it can be only set to 100Mbps or 10Mbps.
- Duplex Mode: to set the device runs in Full Duplex mode or Half Duplex mode.
- Speed: to set the device to run in speed of 10Mbps or 100Mbps.
- Flow Control: to enable or disable the flow control of the device.
- Enable: to enable or disable the linkage of the copper (RJ45).
- Fiber Setting: to set the Duplex Mode of the Fiber to be Full duplex or Half duplex mode.



NOTE:

After configuring the system device, need to press the save button to save the setting.

4.2.8 SNMP Configuration

Configuring the SNMP setting on MIB Browser to monitor the device.



The screenshot shows an "SNMP Configuration" window with several fields and radio buttons.

Get Community Name :	public	Set Community Name :	private
Trap Community Name :	public	Trap Host IP Address :	203.70.249.53
Cold Start Trap :	<input checked="" type="radio"/> Enable <input type="radio"/> Disable	Warm Start Trap :	<input checked="" type="radio"/> Enable <input type="radio"/> Disable
Authentication Fail Trap :	<input checked="" type="radio"/> Enable <input type="radio"/> Disable	MC Broken Trap :	<input checked="" type="radio"/> Enable <input type="radio"/> Disable
MC Link Up Trap :	<input checked="" type="radio"/> Enable <input type="radio"/> Disable	MC Link Down Trap :	<input checked="" type="radio"/> Enable <input type="radio"/> Disable

A "Save" button is located at the bottom of the configuration window.

- Get Community Name: to get the device community name (default = public).
- Set Community Name: to set the device community name (default = private).
- Trap Community Name: to authorize the device trap community name (default = public).
- Trap Host IP Address: to set the trap host IP address (same as monitoring station IP address).

-
- Cold Start trap: to set the trap for rebooting the device (default = enable).
 - Authentication Fail Trap: to set the warning trap when the community name of the device and workstation are different (default = enable).
 - MC Link Up Trap: to enable the trap that if other device has linked up.
 - Warm Start Trap: to enable a trap that if the device was restart.
 - MC Broken Trap: to enable the trap that announcing the WFT-20x was destruct.
 - MC Link Down Trap: to enable the trap that if the linked of the device was pulled down.



This page is intentionally left blank



Chapter 5

SPECIFICATION

Standards	IEEE802.3 10Base-T IEEE802.3u 100Base-TX, 100Base-FX
Ports	1 x 10/100 Base-TX port, 1 x 100 Base-FX port
Speed	10/20Mbps for half/full-duplex 100/200Mbps for half/full-duplex
LED Indicators	Unit: Power, System, Console
	TP: FAIL, LINK/ACT, FDX/COL, 100M Fiber: FAIL, LINK/ACT, FDX/COL
Cable	10Base-T: 2-pair UTP Cat. 3,4,5, up to 100 m (328 ft) 100Base-TX: 2-pair UTP Cat. 5, up to 100 m (328 ft) 100Base-FX: WFT-201, WFT-202 - 62.5/125 μ m or 50/125 μ m multi-mode fiber optic up to 2km WFT-202S15 - 9/125 μ m single-mode fiber optic up to 15km
Power Consumption	6 Watts (maximum)
Dimensions	190 x 120 x 38 mm (L x W x H)
Power	Internal Power 100~240VAC
Temperature	Operating : 0°C ~ 40°C (32°F ~ 104°F)
	Storage : -25°C ~ 70°C (-13°F ~ 158°F)
Humidity	10 ~ 90%, non-condensing
Emissions	FCC Class B, CE Marking Class B, VCCI Class B



This page is intentionally left blank







Part No.:EM-WFT20xv2

