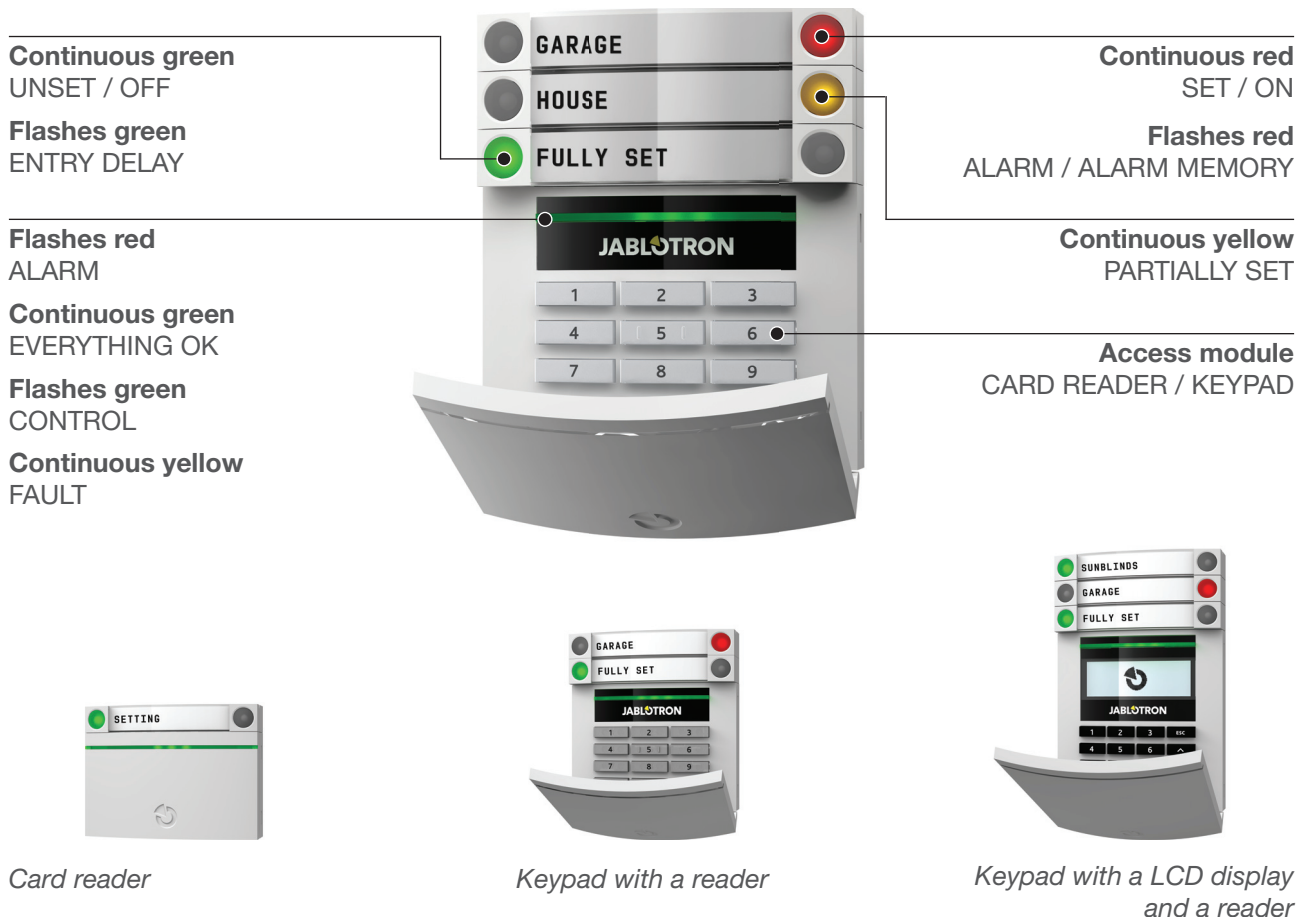


## DESCRIPTION OF KEYPAD (Access module with segments)

For the most convenient control and status indication the JABLOTRON 100 system offers various types of access modules. Controlling (setting, unsetting and other available functions) can be done just by pressing one button on the two-button segments. Moreover, the buttons are backlit in order to clearly indicate the segment status at first sight. The segments can also be used to control various devices – heating, window shutters, gates, etc. An arbitrary number of segments can be used as needed.

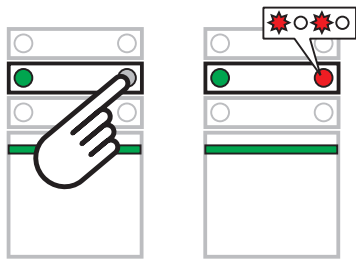


When controlling the system using buttons on segments the command must be confirmed with authorization. This can be done by applying an RFID card or by entering a code on a keypad. Authorisation can be done by RFID cards / tags of the OASiS system, Azor system or any other one working with EM 125kHz. If a high security level is required, it can be set so that the card authorization must be confirmed by entering an access code on a keypad. On the other hand mainly for home automation usage the control via segments can be simplified by setting that for setting or controlling devices no authorization is required. This feature can be used e.g. to control window shutters on the house using a keypad.

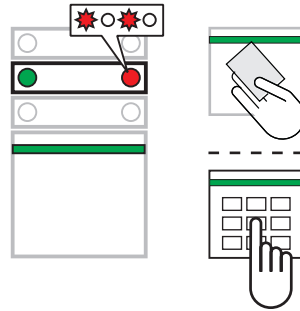
Another advantage of controlling the system using segments is the possibility to carry out multiple commands at the same time – it is therefore possible to set the house section with one segment, set the garden section alarm with the second one and unset the garage section with the third one. Only one authorization is required after selecting all options via segment buttons.

The authorization code entered on a keypad can consist of up to seven characters. It includes a prefix (one to three digits) a separating star and a four-digit code. It can thus be for example 123\*1234 or 1\*1234. This code can be simplified for buildings with only a few users by omitting the prefix. Only a four digit code is then used.

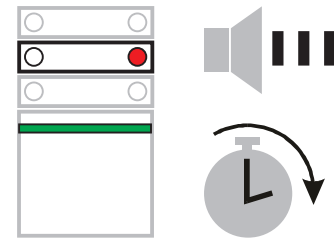
## ALARM SETTING



**I want to set the alarm:**  
*I press the segment button of the corresponding section which then starts flashing ...*



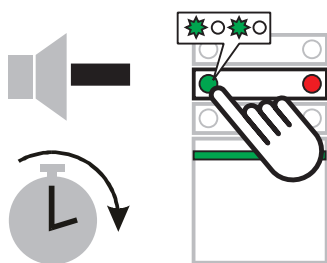
**I confirm the command by authorization:**  
*By applying a card or a tag or by entering a code on a keypad ...*



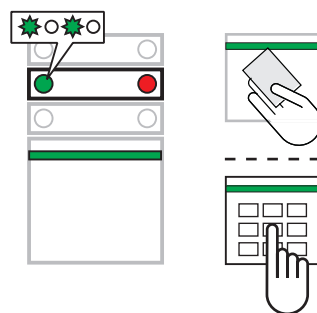
**The command is executed:**  
*The keypad acoustically indicates an exit delay. When it becomes silent, the given section is set <sup>3)</sup>.*

**Note:** In standard settings, active detectors will be bypassed automatically, or depending on the installer settings you can be asked to confirm bypassing active sensors by double-pressing a segment button, or the system can be refused to be set until the deactivation of detectors.

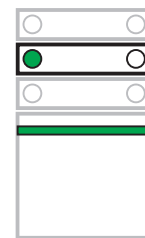
## ALARM UNSETTING



**I want to unset the alarm:**  
*When I enter the building, the entrance delay is triggered. It is indicated by an uninterrupted beeping sound and repeated flashing of the green LED on the button. I press the flashing button ...*



**I confirm the command by authorization:**  
*By applying a card or a tag or by entering a code on a keypad ...*

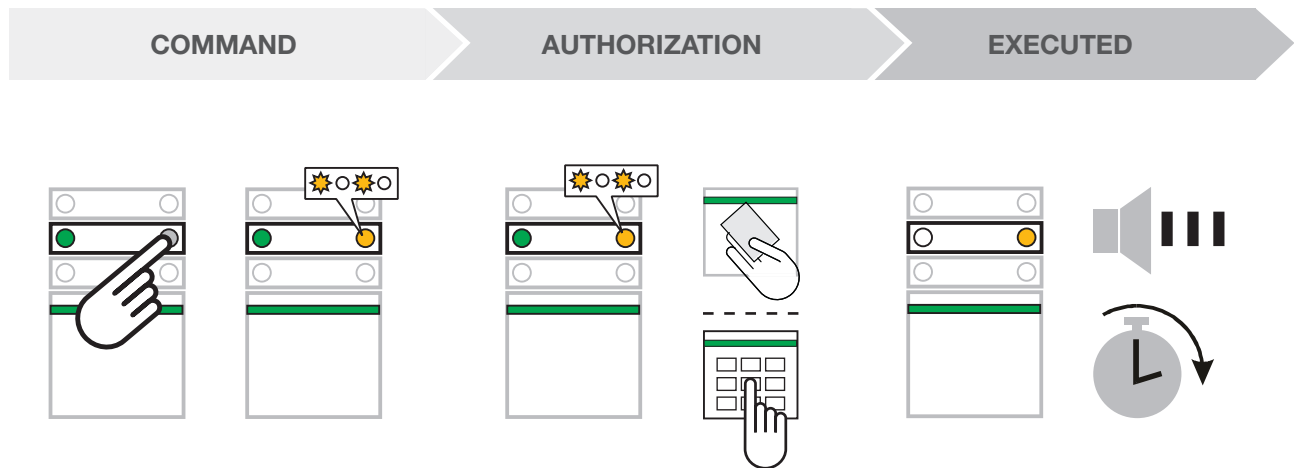


**The command is executed:**  
*The segment LED turns permanently green to indicate an unset section <sup>3)</sup>.*

**Note:** Sections with an entrance delay can be unset via a code or chip reading only without segment button pressing. In the case of a requirement to unset the other sections, it is necessary to press segment buttons before authorization.

## PARTIAL ALARM SETTING

If enabled, partial setting which guards only with selected detectors can be set. You can thus guard for example windows and doors overnight, while motion detectors ignore movement inside the guarded building.



**I want to set the alarm partially:**  
I press the segment button which starts flashing yellow ...

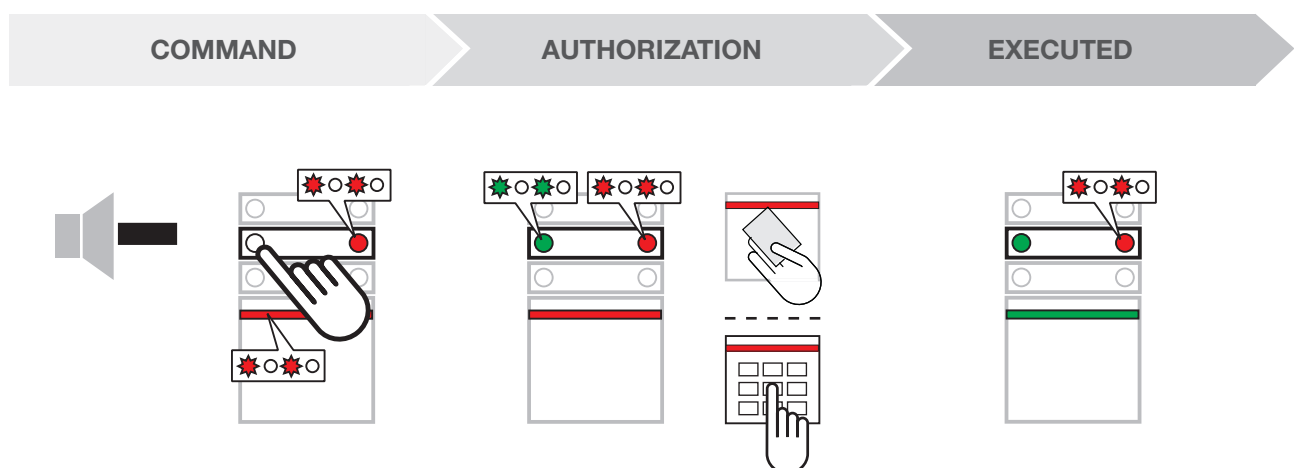
**I confirm the command by authorization:**  
I authorize myself by applying a card or a tag or by entering a code on a keypad ...

**The command is executed:**  
The keypad LED turns yellow to indicate partial setting <sup>3)</sup>.

If we need complete setting (e.g. when leaving the building), it is necessary to press the button twice in the first step. When you press the button for the first time, the LED starts flashing yellow and it turns red after the second press. When the authorization is confirmed, the system is set completely.

When the alarm is set partially (yellow LED lit), it can be set completely by repeating the setting procedure one more time. Partial setting can be set without an authorisation request <sup>3)</sup>.

## TERMINATING A TRIGGERED ALARM



It may happen that you forget to unset the system and trigger an alarm. The keypad LED flashes red together with an LED on the corresponding segment. You can terminate the alarm by unsetting the system. An LED on the segment then indicates the alarm memory <sup>3)</sup>.

The system also indicates that there was an alarm while you were away in the same way. In such an event be wary while inspecting the building or wait until the security agency response team arrives.

The segment keeps indicating the alarm memory until it is set again. The indication can also be terminated by repeating the procedure above. Clearing this indication is possible on the internal menu of the LCD keypad. *Main menu – Clear alarm memory indication.*

## OTHER MEANS OF CONTROL

### - with a keyfob, by telephone and via the Internet



#### Using a keyfob

The button function is shown by the lock symbols. A closed lock button sets the alarm while an open lock button unsets it. Concurrent pressing of both buttons sends a panic alarm signal.

The buttons can be blocked against unintentional pressing (child lock). For more information see the keyfob manual.



#### Using the voice menu

The alarm can also be controlled using a mobile phone voice menu which guides you through the selection of functions. When you enter the menu, the first thing you are informed about is the alarm status. If voice menu access is enabled for all telephone numbers, you are required to enter a code (on the phone keypad). Another possibility is enabling access from authorized telephone numbers only (the telephone contacts stored in the alarm memory).

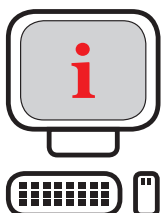
When an alarm is triggered, the system informs you with a voice message <sup>3)</sup>.



#### Using SMSes and dialling-in

SMS commands can be used to control various devices – heating, sunblinds, etc. in the same way as segments. The SMS text form is CODE COMMAND. Command wording can be set according to the actual situation, e.g. SUNBLINDS DOWN. It can be set that no code is required before the command. You can also enable control by dialling-in from an authorized number. If preset then such a call is rejected by the control panel, therefore it can be free of charge and the preset command is automatically executed.

If there is an alarm, the system can send you an informative SMS <sup>3)</sup>.



#### Via the Internet

The alarm can also be controlled via the Internet using the web SELF SERVICE interface which is accessible from [www.jablonet.net](http://www.jablonet.net). To be able to use this web service previous one-time control panel registration is required. Please ask your installer for more details.

## KEYPAD WITH LCD - Main menu <sup>2)</sup>

A user or the system administrator can do partial diagnostics using this keypad or make some small changes to the system settings.

<b>Main menu</b>	Press <b>ENTER</b> . The display shows you the <b>Main menu</b> . Using buttons $\Delta$ or $\nabla$ select the desired option. Confirm your selection by pressing the <b>ENTER</b> button. Then authorisation will be requested. Do the authorisation using your access code or an RFID card / tag. The selected option can be changed according to your restriction level. Leave the main menu by pressing the <b>ESC</b> button or let it be terminated automatically after the 5 minute time-out.
<b>Clear alarm memory indication</b>	Press <b>ENTER</b> . The display shows you the <b>Main menu</b> . Using buttons $\Delta$ or $\nabla$ select <b>Clear alarm memory indication</b> and confirm your selection by pressing <b>ENTER</b> . Authorise yourself. The alarm memory will be cleared in all sections for which you have access. Stop the activity by pressing <b>ESC</b> .
<b>Section control</b>	Press <b>ENTER</b> . The display shows you the <b>Main menu</b> . Using buttons $\Delta$ or $\nabla$ select <b>Section control</b> and confirm your selection by pressing <b>ENTER</b> . Authorise yourself. By pressing buttons $\Delta$ or $\nabla$ select the section and by pressing <b>ENTER</b> the selected section will be set. By repeated selection it is possible to set more sections. When partial setting is allowed, press <b>ENTER</b> once to set the section partially, press <b>ENTER</b> again to set fully. The set system status is shown on the display by the highlighted numbers of particular sections. A non highlighted section is an unset section, an unfilled square around the number = partially set, a filled square around the number = fully set. An exit delay or setting is executed immediately by selecting the section. By the same procedure it is possible to perform unsetting. The section control menu is terminated by pressing the <b>ESC</b> button (repeatedly).
<b>Event memory</b>	Press <b>ENTER</b> . The display shows you the <b>Main menu</b> . Using buttons $\Delta$ or $\nabla$ select <b>Event memory</b> and confirm your selection by pressing <b>ENTER</b> . Authorise yourself. By pressing buttons $\Delta$ or $\nabla$ you can read the basic list of the event memory. In the upper status bar the time when the event occurred is visible. By pressing <b>ENTER</b> on a selected event it shows a detailed log. In this detailed listing, use buttons $\Delta$ or $\nabla$ to scroll through the details of other events. Terminate the event memory menu by pressing the <b>ESC</b> button (repeatedly).
<b>Active detectors</b>	Press <b>ENTER</b> . The display shows you the <b>Main menu</b> . Using buttons $\Delta$ or $\nabla$ select <b>Active detectors</b> and confirm your selection by pressing <b>ENTER</b> . The LCD display shows you a list of detectors which were active at the moment of pressing the <b>ENTER</b> button. By pressing buttons $\Delta$ or $\nabla$ you can scroll through this list. The list shows you the section to which the detector has been enrolled, its position and the name of the detector. Terminate the active detectors menu by pressing the <b>ESC</b> button (repeatedly).
<b>Bypassed detectors</b>	Press <b>ENTER</b> . The display shows you the <b>Main menu</b> . Using buttons $\Delta$ or $\nabla$ select <b>Bypassed detectors</b> and confirm your selection by pressing <b>ENTER</b> . The LCD display shows you a list of detectors which were bypassed at the moment of pressing the <b>ENTER</b> button. By pressing buttons $\Delta$ or $\nabla$ you can scroll through this list. The list shows you the section to which the detector has been enrolled, its position and the name of the detector. The system does not react to bypassed detectors at all. (Turning the detector's bypassing on and off can only be done by a User with Admin authorization via the Settings menu). Terminate the Bypassed detectors menu by pressing the <b>ESC</b> button (repeatedly).
<b>RF detectors without response</b>	Press <b>ENTER</b> . The display shows you the <b>Main menu</b> . Using buttons $\Delta$ or $\nabla$ select <b>RF detectors without response</b> and confirm your selection by pressing <b>ENTER</b> . The LCD display shows you a list of detectors from which the system has repeatedly not received periodical transmissions. By pressing buttons $\Delta$ or $\nabla$ you can scroll through the list. The list shows you the section to which the detector has been enrolled, its position and the name of the detector. To fix this problem, contact your installer. Terminate the RF detectors without response menu by pressing the <b>ESC</b> button (repeatedly).

<p><b>Detectors with low battery</b></p>	<p>Press <b>ENTER</b>. The display shows you the <i>Main menu</i>. Using buttons <math>\Delta</math> or <math>\nabla</math> select <b>Detectors with low battery</b> and confirm your selection by pressing <b>ENTER</b>. The LCD display shows you a list of detectors from which a low battery was reported. By pressing buttons <math>\Delta</math> or <math>\nabla</math> you can scroll through the list. The list shows you the section where the detector has been enrolled, its position and the name of the detector. The batteries have to be changed within the next 14 days of the low battery report. For battery changing it is necessary to bypass the particular detector. Then when batteries have been changed cancel the bypasses (Settings – Devices). Terminate the detectors with low battery menu by pressing the <b>ESC</b> button (repeatedly).</p>
<p><b>Active tampers</b></p>	<p>Press <b>ENTER</b>. The display shows you the <i>Main menu</i>. Using buttons <math>\Delta</math> or <math>\nabla</math> select <b>Active tampers</b> and confirm your selection by pressing <b>ENTER</b>. The LCD display shows you a list of active tampers. By pressing buttons <math>\Delta</math> or <math>\nabla</math> you can scroll through the list. The list shows you the section to which the detector has been enrolled, its position and the name of the detector. To fix this problem call the installer (installation company). Terminate the active tampers menu by pressing the <b>ESC</b> button (repeatedly).</p>
<p><b>Faults in the system</b></p>	<p>Press <b>ENTER</b>. The display shows you the <i>Main menu</i>. Using buttons <math>\Delta</math> or <math>\nabla</math> select <b>Faults in the system</b> and confirm your selection by pressing <b>ENTER</b>. The LCD display shows you a list of detectors in which a fault was detected. By pressing buttons <math>\Delta</math> or <math>\nabla</math> you can scroll through the list. The list shows you the section to which the detector has been enrolled, its position and the name of the detector. To fix this problem call the installer (installation company). Terminate the Faults in the system menu by pressing the <b>ESC</b> button (repeatedly).</p>
<p><b>Settings</b></p>	<p>Press <b>ENTER</b>. The display shows you the <i>Main menu</i>. Using buttons <math>\Delta</math> or <math>\nabla</math> select <b>Settings</b> and confirm your selection by pressing <b>ENTER</b>. Authorise yourself. The LCD display shows you the <b>Users</b> and <b>Devices</b> settings (only for Administrator authorisation). Choose which settings you want to change (Users or Devices) and confirm the selection by pressing <b>ENTER</b>.</p> <p><b>User settings:</b> The User name is displayed. By pressing buttons <math>\Delta</math> or <math>\nabla</math> select, what you want to change: code, telephone number, access card no.1 or access card no.2. By pressing <b>ENTER</b> on the selected option open the option to change the data by numerical buttons. Changes can be saved by pressing <b>ENTER</b>. Other options are changeable by the same procedure. Leave the menu after saving the data by repeatedly pressing <b>ESC</b>. You are then asked <b>Save settings?</b> Save or don't save and give confirmation by <b>ENTER</b> and changes are updated in the system or cancelled.</p> <p>A user with administrator authorization can change the settings of other users in sections for which he has access privileges.</p> <p><b>Devices settings</b> (only for Administrator authorisation): The display shows you the position and the name of the device. Press the <b>ENTER</b> button and then using buttons <math>\Delta</math> or <math>\nabla</math> select the device for which you want to change the settings. By pressing <b>ENTER</b> on the selected position open the option to program <b>Bypass</b> with settings <b>YES / NO</b>. Confirm a change by pressing <b>ENTER</b>. When you choose <b>YES</b>, the device is bypassed and the system will not react to it. A bypass can be cancelled if you choose the opposite option <b>NO</b>. When changes are complete, you can leave the menu by repeatedly pressing <b>ESC</b>. You are then asked to <b>Save</b> or <b>Don't save</b> the settings. Confirm it by <b>ENTER</b> and the changes are updated in the system or cancelled. Terminate the settings menu by pressing <b>ESC</b> (repeatedly).</p>
<p><b>Display settings</b></p>	<p>Press <b>ENTER</b>. The display shows you the <i>Main menu</i>. Using buttons <math>\Delta</math> or <math>\nabla</math> select <b>Display settings</b> and confirm your selection by pressing <b>ENTER</b>. The LCD display shows you the list of parameters, which can be changed. By pressing buttons <math>\Delta</math> or <math>\nabla</math> select the required option. By pressing the <b>ENTER</b> button on the selected parameter you open the parameter options. <b>Contrast</b> is selectable in the range 1 to 5. <b>LCD backlight</b> and <b>Keypad backlight</b> are selectable in the range 0 to 5. 0 = keypad backlight is turned off.</p>
<p><b>Service</b></p>	<p>Only for installation companies.</p>



