



Inspection Report

Your Request No.:

Inspection No. :

Product Ref. :

v1

Passed

From :

ASIA PACIFIC INSPECTION LIMITED

Unit B,12/F Tai Chi Factory Building, 25-29 Kok Cheung Street, Tai Kok Tsui, Kowloon, H

Contact :

Inspector:

To :

Contact:

Supplier

Factory Address :

China

Factory Representative:

Purchase Order

Product :

Loading Date: 16-Dec-11

Service Performed

Final Random inspection

Inspection Date : 29-Nov-11

Inspection Office : Ningbo

Destination Country France

Lot Size : 9,450

Sample Size : 200

Production Status : 100 % Ready for inspection

Packing Status : 97 % Ready for inspection

Approval Sample :

Sealed Sample in factory

Shipment Sample 0 pcs

Defect Sample 0 pcs

Inspection Results

AQL: II

Defects	Critical	0	Major	1.5	Minor	4.0
Max	0		7		14	
Found	0		0		10	
Result	Passed		Passed		Passed	

Internal Check

AQL: S-3

Defects	Critical	0	Major	1.5	Minor	4.0
Max	0		1		2	
Found	0		0		0	
Result	Passed		Passed		Passed	

Master Carton	Measured values	Packing Info values	Discrepancy %	Shipping Mark values	Discrepancy %	Result Passed/Failed
Weight(kg)	6.44	6.44	0.0	6.5	-0.9	
Dimension (LxWxH)	44x28.5x29.5=36993	44x28.5x29.5=36993	0.0	44x28.5x29=36366	1.7	PASSED
Dimension(LxWxH) including pallet	N/A	N/A	N/A	N/A	N/A	N/A

Defects

No.	Defect Description	Critical	Major	Minor
1	Scratch mark on housing(image146-147)	0	0	3
2	Poor painting(image148)	0	0	1
3	damny of housing(149)	0	0	1
4	Poor surface of housing edge(image150-152)	0	0	5
Total :		0	0	10

Internal Check

No.	Defect Description	Critical	Major	Minor
1	Nil	0	0	0
Total :		0	0	0

Remarks to be approved

No.	Remarks	SampleSize%	Status	Result
1	Nil			



Inspection Report

Your Request No.:

Inspection No. :

Product Ref. :

v1

Passed

Packaging Information

Passed

Cartons	Qty	Carton Size (cm)			Weight (kg)
		L	W	H	
Inner Box					
Outer Box	1	44	28.5	29.5	6.44

Export Cartons Inspected 200 gift boxes

PONo	Qty	ItemRemark
71YES12FRCA0041	9,450	

Packing Material

Passed

Export Carton	New export carton	<input type="checkbox"/>
Fastening	Metal staples	<input type="checkbox"/>
Sealing	Opaque gummed tape	<input type="checkbox"/>
	Transparent gummed tape	<input checked="" type="checkbox"/>
	Paper tape	<input type="checkbox"/>
Strapping	Nylon	<input checked="" type="checkbox"/>
	Ply of corrugated paper	<input type="checkbox"/>
Material		2
Others		

Description of Product (Colour, Dimension, Packing, Material, Components)

Packaging: each set packed in poly bag and bubble bag with paper board card then into a gift box
 Color:silver, yellow, grey.
 Dimension:product: product: LxWxH: 40x27x26.5cm, cable length: 476-480cm, hose: L150cm, telescopic tube: Ø35.5/Ø31.5x720/440mm,
 Weight:gift box: 660g, instruction manual: 23g, poly bag and bubble bag: 49g,paper board card:98g, nylon: 12g.product: 4300g . product assembly:5.42kg.
 Material: metal, plastic.
 Accessories: 1pc instruction manual include france for FRCA.
 1pc floor brush, 1pc bristle brush, 1pc crevice nozzle with brush, 1pc hose, 1pc holder,1pc telescopic tube.

Barcode Testing :

Visual Check (read)

Barcode	Description	Digits	Sample	Fail	Poor	Good	Scan Result	Scan Remark
3608143509823	On Gift Box	13	200	0	0	200	Passed	
0103608143509823	On the EAN 14 label	16	1	0	0	1	Passed	

Comments for information :

No. Comments

- Please note that WEEE symbol on instruction manual, rating label and gift box.
- Please note that serial number range: 1111001661-1111011110.
- Please note that the inspection was performed with approval sample,I/M, PVL, CCL and packaging list.
- Please note that the factory had not equipment for impact test(same as last shipment) .
- Please note the format of poly bag was different from client information, but 12kinds of language same as client information (same as lastshipment) .
- Please note the actual sample provided two small accessories same as PVL, but golden sample without both parts (same as last shipment) .
- Please note there is no round sticker was found on top and bottom of gift box.

Test Results :

No.	Description	Sample	Passed	Failed	Comments
1	Appearance check	200	190	10	
2	Function test	200	200	0	
3	Packaging	200	200	0	
4	Part list	200	200	0	
5	Cable pull test	5	5	0	100N 25 times and 1sec
6	Rubbing test	5	5	0	
7	Dimension check	20			See product description.
8	High pot test	200	200	0	
9	Power test	20			See below data.
10	Internal check	20	20	0	
11	Life test	5	5	0	4 hours.



Inspection Report

Your Request No.:
Inspection No. :
Product Ref. :

v1

Passed

Components :

No.	Item	Data	Approval	Result
1	Power cord	H05VV-F 2x1.0mm ² Ningbo JiuLian`	VDE	Passed
2	Mains plug	JL201 250V 16A`	VDE	Passed
3	Switch	P12-2 10(8)A 250VAC T120`	VDE	Passed
4	X2 capacitor	AD 0.22uF K X2 MEX GPF40/85/21/C 275 V EN60384-14`	VDE	Passed
5	Motor	HCX160 220-240V 50HZ Class 120 1800w`	NIL	Passed
6	Internal wire	08(RV-90) 1,0mm ² 300/500V NingboWuMA	CCC	Passed

Additional Data :

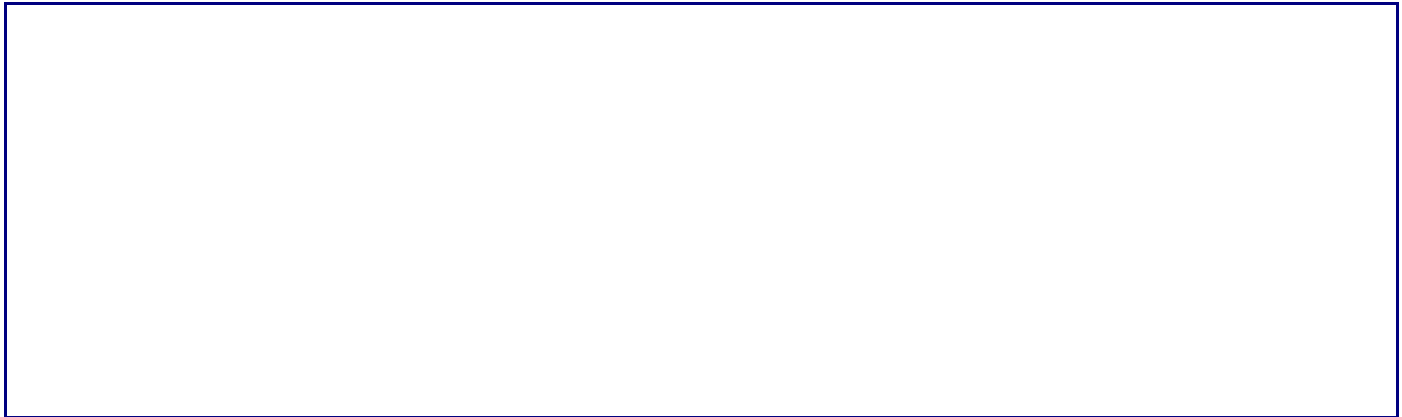
Power test: W
220V
Sample :
Data: 1629 1648 1637 1643 1632 1645 1625 1633 1647 1653 1649 1638 1647
sample:
data: 1635 1640 1651 1644 1633 1649 1641

230V
Power test: W
Sample :
Data: 1791 1782 1766 1785 1774 1790 1788 1776 1792 1798 1776 1762 1781
sample:
data: 1780 1789 1771 1775 1783 1782 1794

240V
Power test: W
Sample :
Data: 1931 1923 1926 1908 1920 1914 1912 1922 1906 1915 1909 1910 1899
sample:
data: 1925 1907 1916 1919 1930 1902 1943

Serial number:1111001661-1111011110 200pcs

05498038180558306005091980447304961017550518302620
0313310576053821037404116 0858406364048590166306256
06997098610324010648047260520007942043610286208945
03466088700547203215029670785003628022980738407265
08809070290804010610049160440102734059550668906335
05138095960886809093076450382804455080121026803761
09252039570197102865080800185105740095940748007099
09194081610449905118 082570574404038099680322809060
07295082670872808915052731098401944093950844609159
0389209016046540598809109089291107804117 0469607658
10841044670421703872056100543001727020580442010901
08478104530664502348030400738705877025320530903325
06537019060278102186055080337002671109300661802731
0580305917055280368908118 1042808458108430719904348
06967052230449803624040760618601754071660188204329
0275302117 0499605520090980561304958027160453202867
05557066990839603543018230219305986049700352305602
11086080840972102495047480401010333021000859405405
06873045600733007892026930725310017064500535210881
07321030550171606212020810731307369064880748807084





Inspection Report

Your Request No.:

Inspection No. :

Product Ref. :

v1

Passed

FRI remarks summary

✓	Code	Description	✓	Code	Description
	Q01	1-AQL/defect		Q14	7-Product -Assembly/Function
	Q02	2-Golden sample		Q15	7-Product -Color shade
	Q04	3-Technical file-Missing		Q16	7-Product -Construction
	Q06	4-Packing -Carton Volume		Q18	7-Product -Firmware
	Q07	4-Packing -Other reason		Q19	7-Product -Labelling
	Q08	4-Packing -Palet Dimensions		Q20	7-Product -Measurements
	Q09	5-Packaging -BarCode		Q21	7-Product -Other reason
	Q10	5-Packaging -Humidity Absorber		Q28	8-User Manual -Other reason
	Q11	5-Packaging -Language/Address		Q29	9-Testing
	Q12	5-Packaging -Other reason		Q00	10-OTHER REASON
	Q13	6-Package Content-MissingParts			



1 Gift box



2 front



3 mark



4 mark



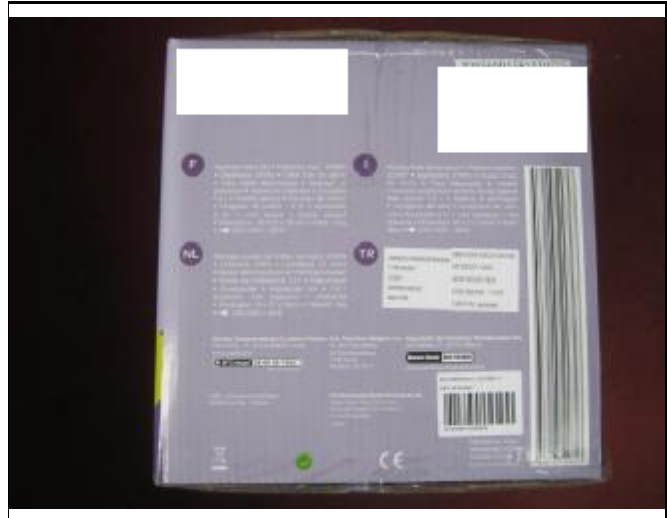
5 back



6 mark



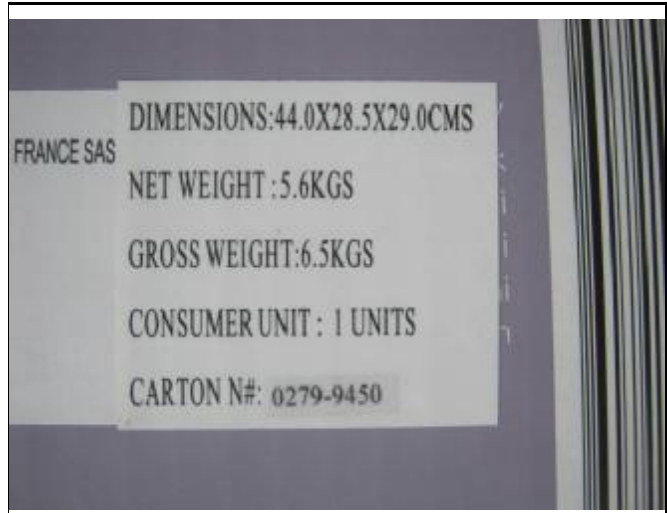
7 mark



8 side1



9 shipping mark



10 side mark



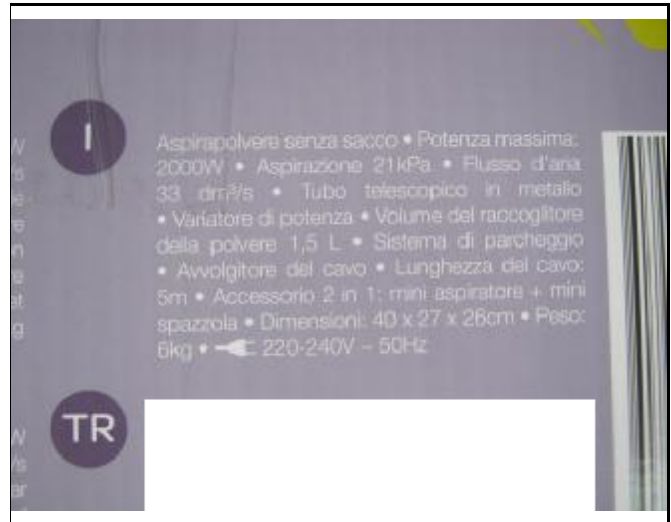
11 EAN 14 label



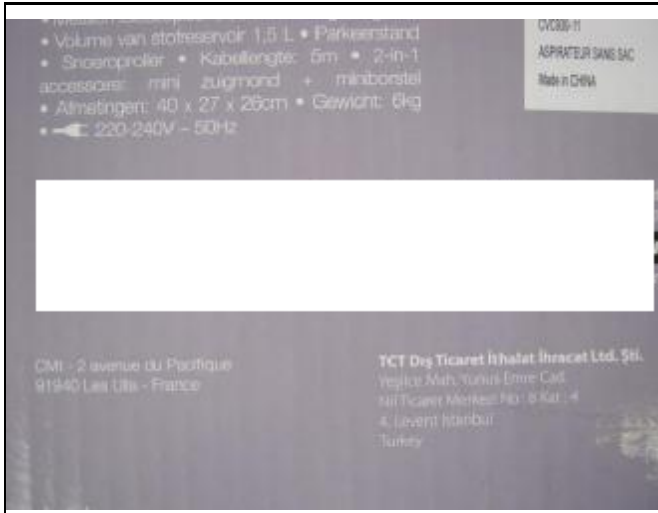
12 serial number



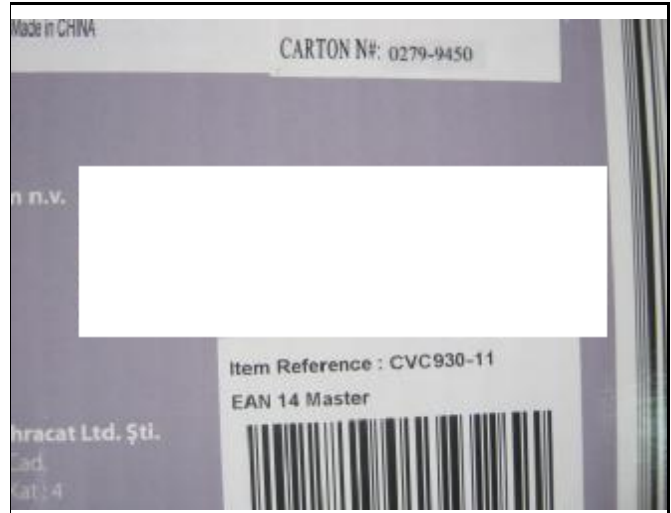
13 mark



14 mark



15 mark



16 mark



17 mark



18 mark



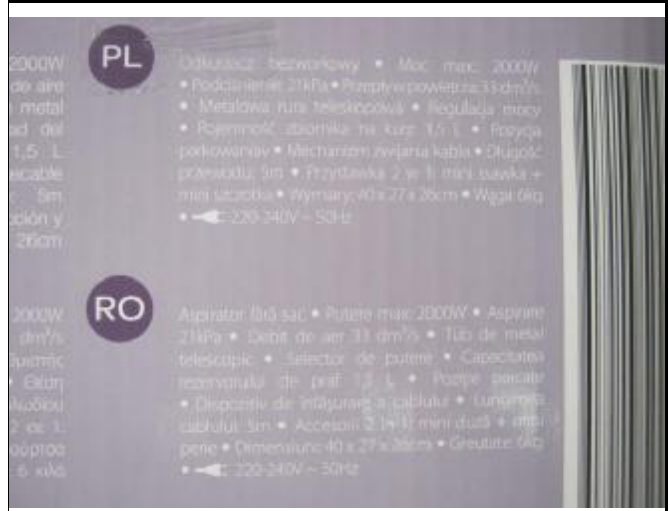
19 barcode



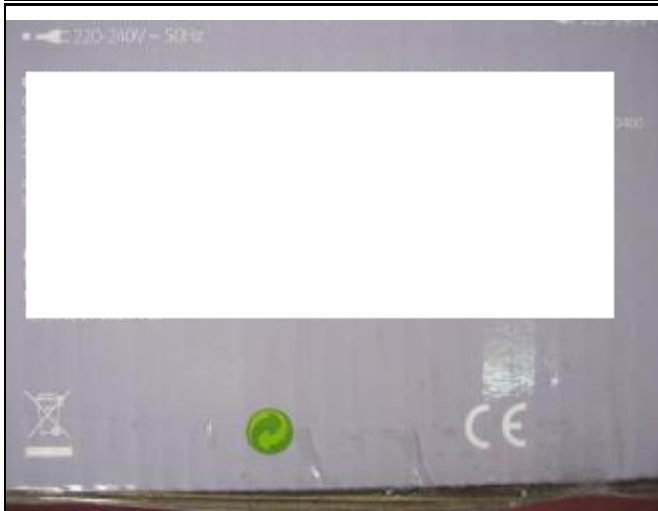
20 side2



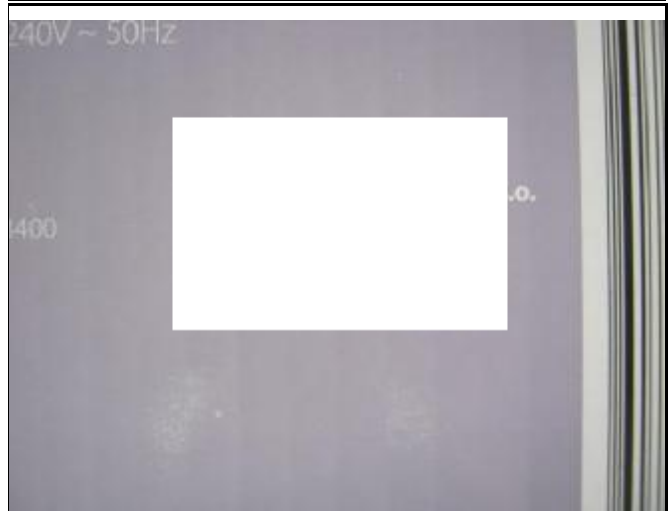
21 mark



22 mark



23 mark



24 mark



25 | mark



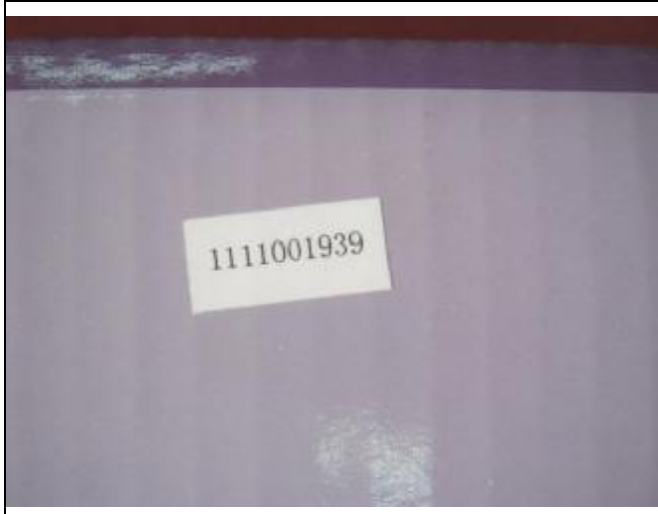
26 | barcode



27 | top



28 | bottom



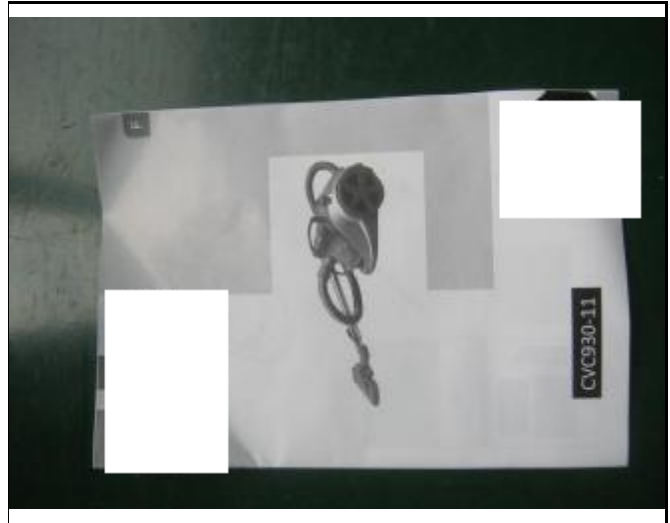
29 | serial number sticker



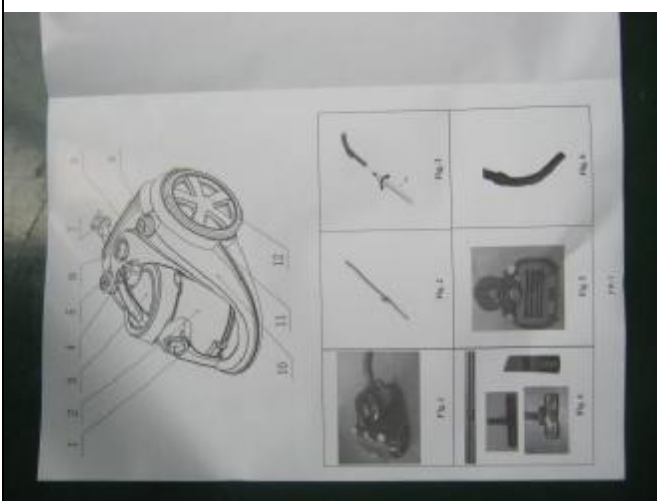
30 | open carton



31 Packaging



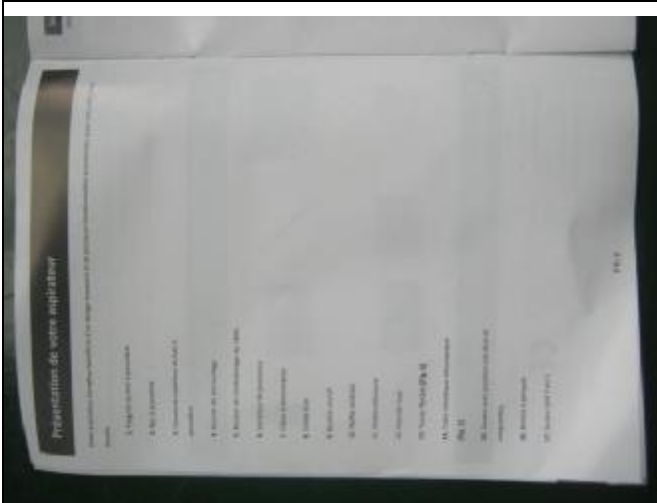
32 i/M



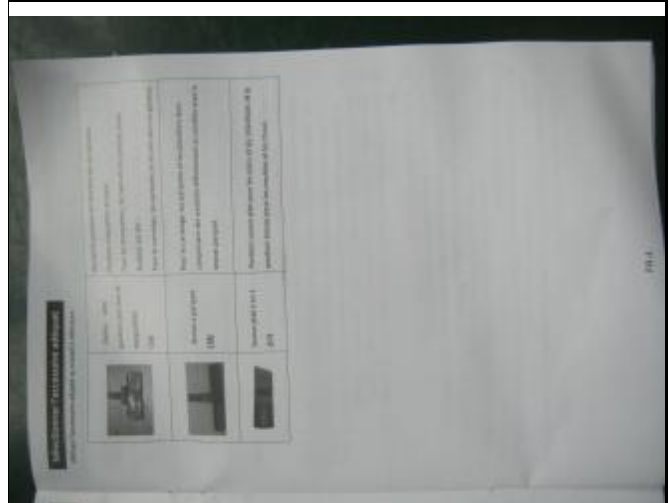
33 i/M



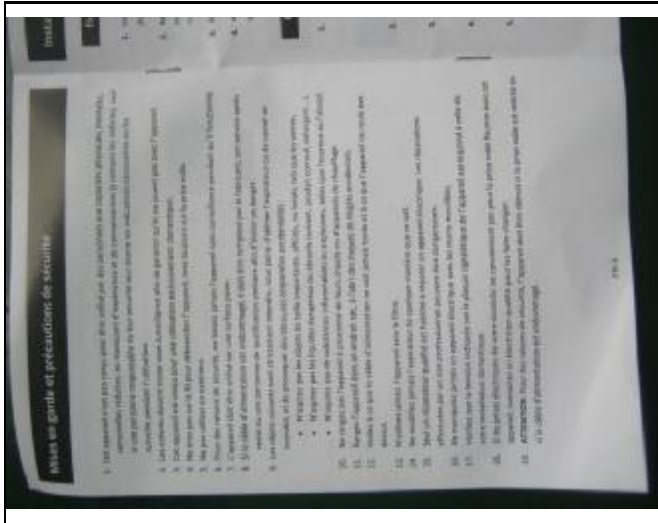
34 i/M



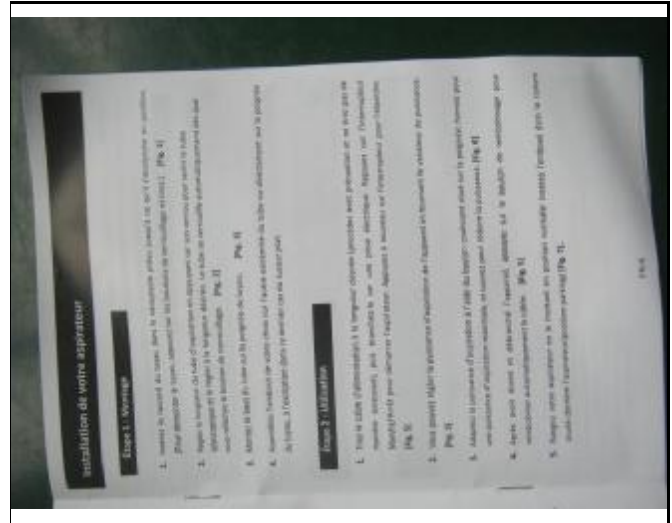
35 i/M



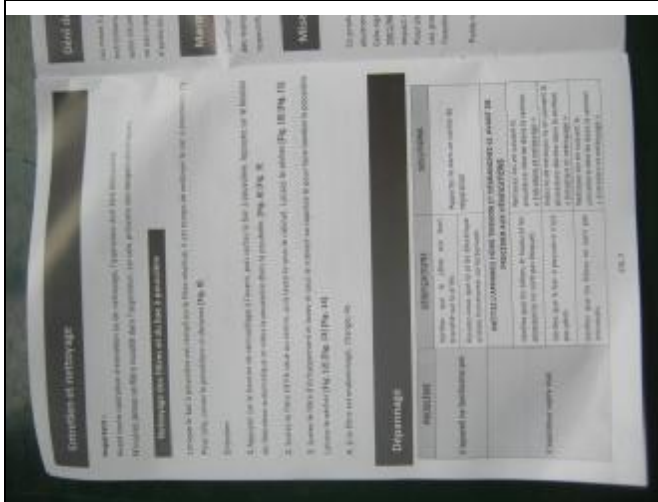
36 i/M



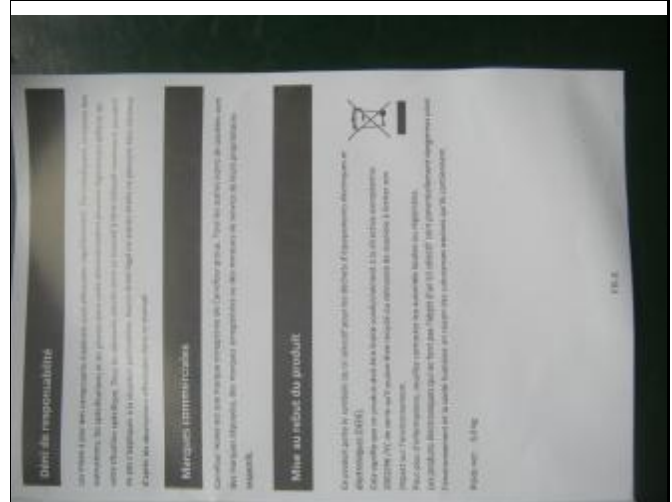
37 i/M



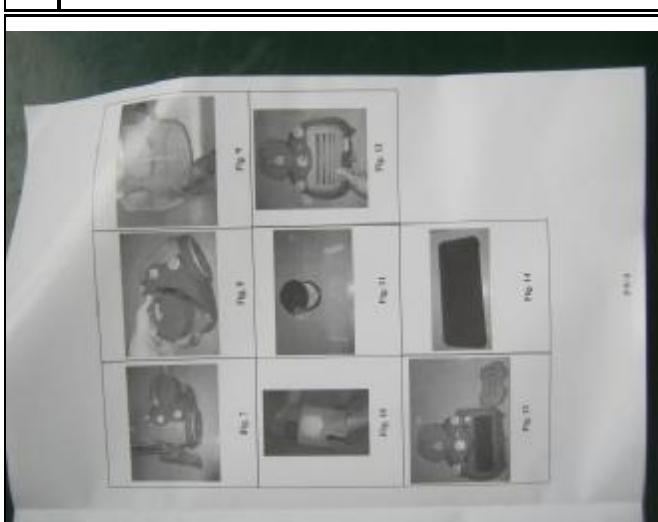
38 i/M



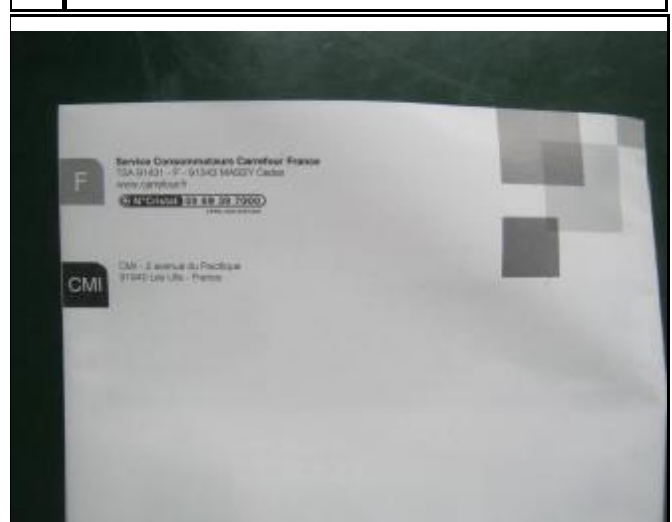
39 i/M



40 i/M



41 i/M



42 i/M



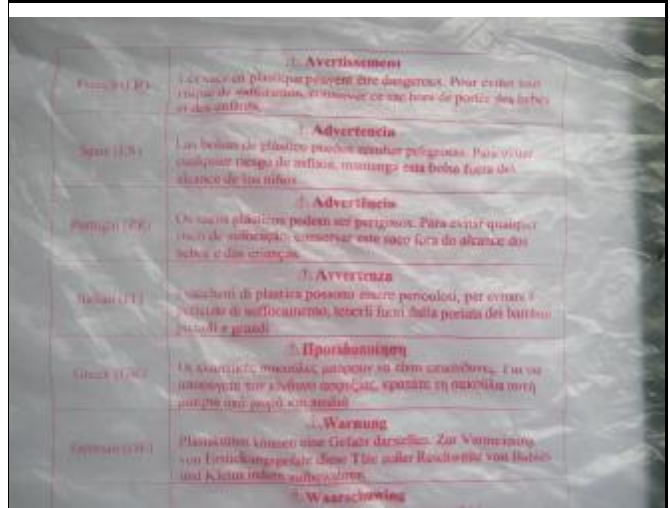
43 Holder



44 crevice nozzle with brush



45 crevice nozzle with brush



46 mark on poly bag



47 mark on poly bag



48 Air hole



49 floor brush



50 floor brush



51 floor brush



52 floor brush



53 bristle brush



54 bristle brush



55 | bristle brush



56 | Hose



57 | Hose



58 | telescopic tube



59 | telescopic tube



60 | telescopic tube



61 | mark on bubble bag



62 | mark on bubble bag



63 | Air hole



64 | Product



65 | top



66 | power switch



67 | cable switch



68 | speed adjust switch



69 | bottom



70 | Rating Label



71 | side1



72 | side2



73 | mark on dust box



74 | front



75 | mark



76 | back



77 | brand mark



78 | cable outlet



79 | cable



80 | mark on plug



81 | mark on cable



82 | mark on cable



85 | break down filter



86 | break down dust box



87 Detail



88 dust box



89 dust box



90 dust box



91 dust box



92 dust box



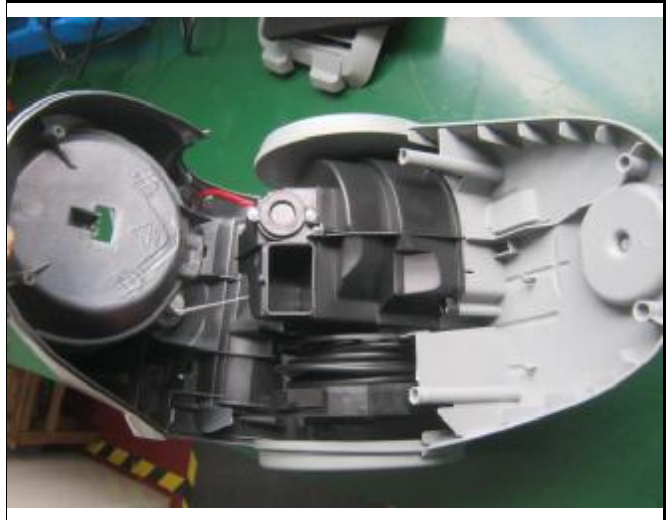
93 | dust box



94 | dust box



95 | assemble Check



96 | open product



97 | Inner view



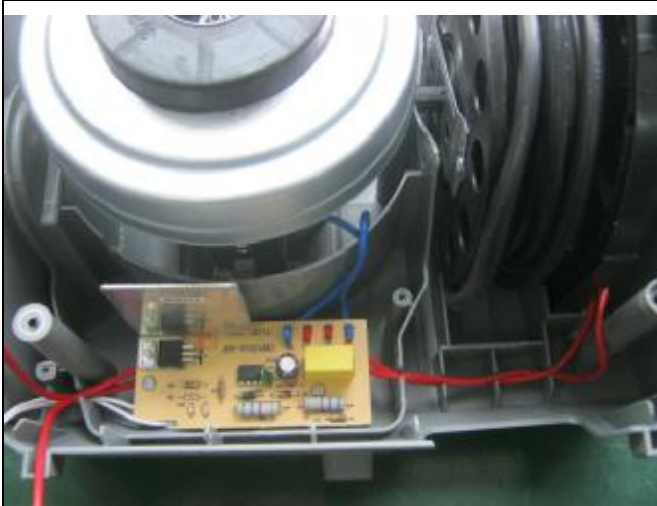
98 | Inner view



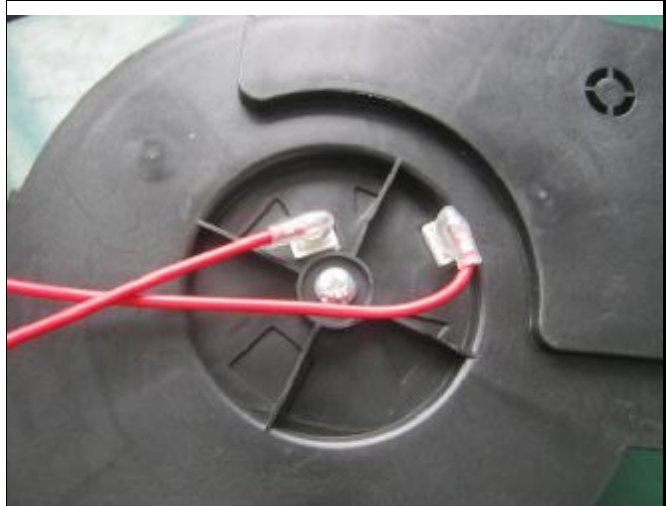
99 Inner view



100 Inner view



101 Inner view



102 Inner view



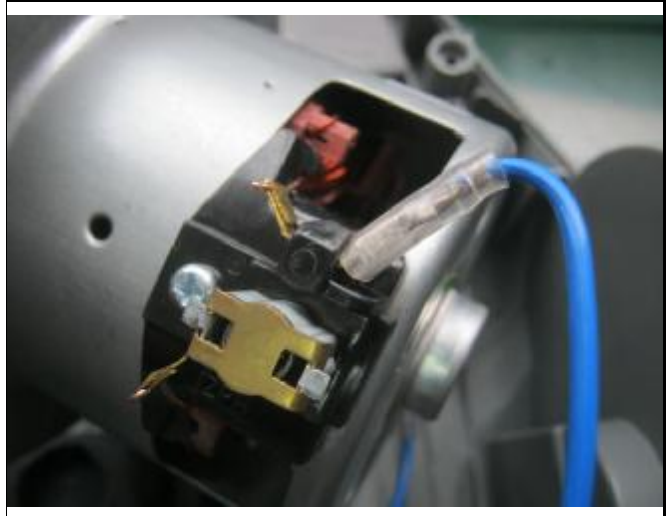
103 Inner view



104 Inner view



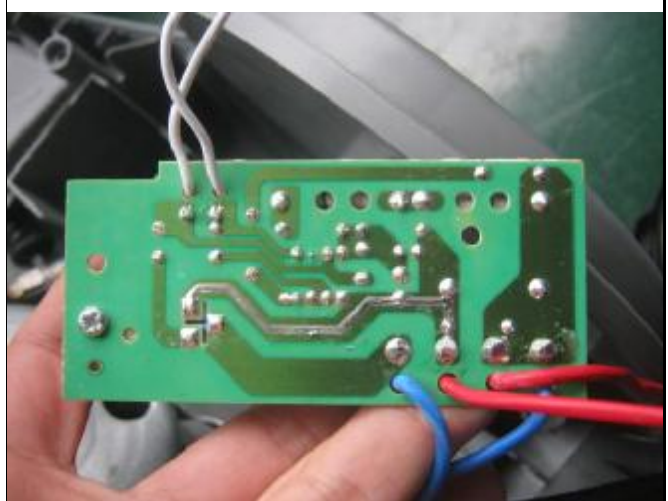
105 Inner view



106 Inner view



107 PCB



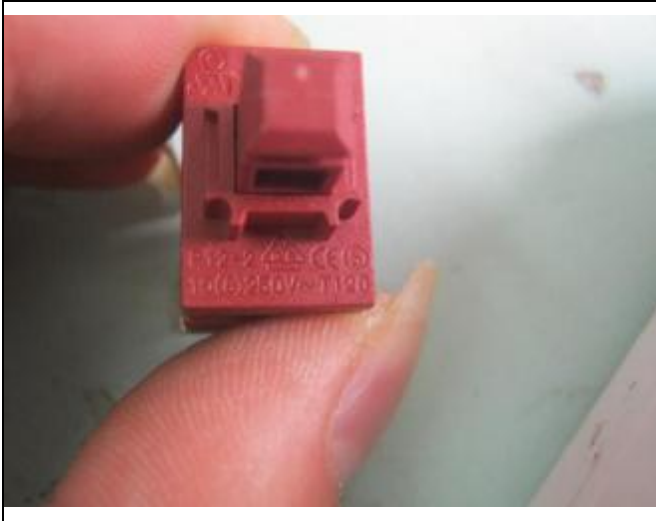
108 PCB



109 mark on capacitor



110 mark on speed adjust switch



111 mark on power switch



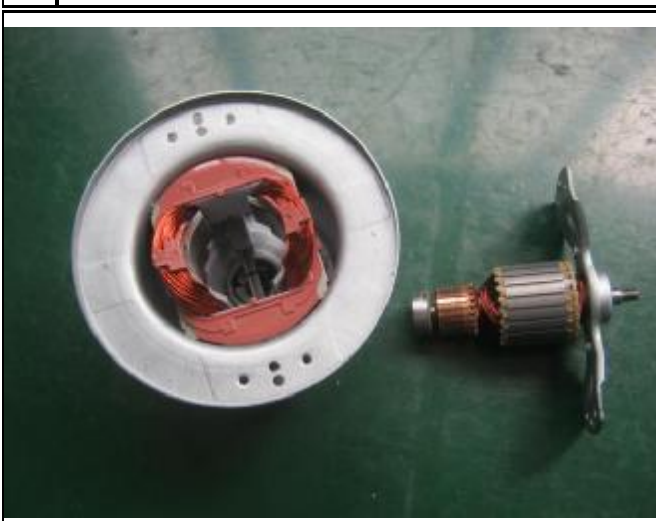
112 mark on power switch



113 motor



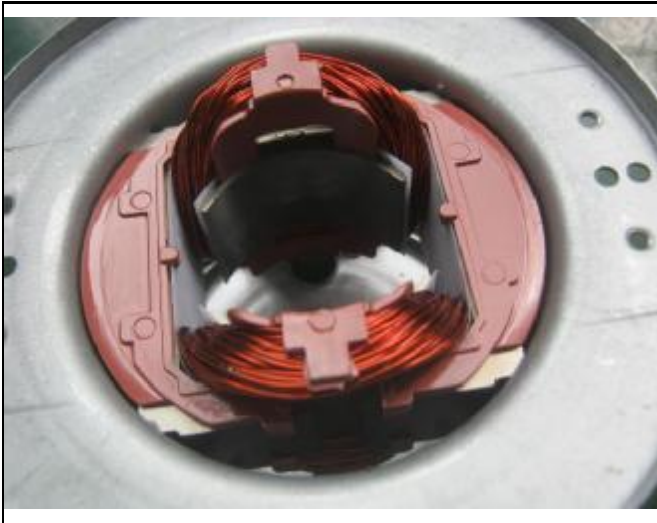
114 mark on motor



115 open motor



116 Rotor



117 stator



118 mark on internal wire



119 mark on internal wire



120 mark on internal wire



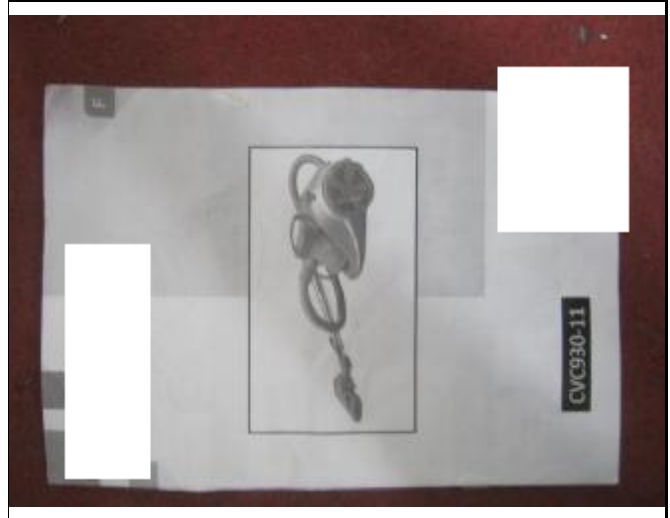
121 Approval sample



122 Approval sample



123 Approval sample



124 Approval sample



125 Approval sample



146 Defect1



147 Defect1



148 Defect2



149 Defect3



150 Defect4



151 Defect4



152 Defect4



162 ID card



Inspection Report

Your Request No.: 802984
Inspection No. : 254968
Product Ref. : CVC930-11

v1

Passed

For and on Behalf of
Asia Pacific Inspection Ltd

*** End of Report ***

Client Action:

- Accept Results / Release shipment
- Factory Re-work and Re-inspection
- Cancel Order

6206