



MAX COMBO NET
ENGLISH

USER'S MANUAL



TABLE OF CONTENTS

GENERAL SAFETY	2
GENERAL INFORMATION	3
I. UNPACKING	3
II. FEATURES	3
III. REMOTE CONTROL UNIT (RCU)	4
IV. HOW TO SETTING RCU FOR TV	6
V. FRONT PANEL	8
VI. REAR PANEL	9
INSTALLING EQUIPMENT	10
CHANNEL LIST GUIDE	11
MENU GUIDE	13
MAIN PAGE	13
I. CHANNEL MANAGER	13
II. INSTALLATION	15
III. OPTIONS	20
IV. UTILITY	22
V. ACCESSORY	23
PVR Guide	24
TROUBLESHOOTING	31
SPECIFICATIONS	32
BRAND LIST	178

To disconnect the apparatus from the mains, the plug must be pulled out from the mains socket, therefore the mains plug shall be readily operable.





GENERAL SAFETY



WARNING

Please read the following recommended instructions carefully to avoid the risk of your physical injury before the product is operated.

Do not cover the receiver and keep clear space around the receiver for sufficient.

Check the receiver's operation voltage 90~250V, 50Hz~60Hz, 12V 2.5A Adaptor
Keep liquid away from the receiver.

The receiver shall not be exposed to dripping or splashing and no objects that filled with liquid shall not be placed on the receiver.

Unplug the receiver from the wall outlet before cleaning.

Use a soft cloth and a mild solution of washing-up liquid to clean the casing.

Do not block the receiver's ventilation slots which are provided for ventilation and protection from overheating.

Please maintain the receiver in a free airflow.

Do not allow the receiver to be exposed to hot, cold or humid condition.

Do not use any cable and attachment that are not recommended as these may damage your equipment.

Please unplug the receiver from the wall outlet and disconnect the cable between the receiver and the antenna when you will not use it for long time.

Do not remove the cover to reduce the risk of electric shock.

Do not attempt to service the receiver yourself.

Refer all serving to qualified service personnel.

Manual may be updated as new features.





GENERAL INFORMATION



I. UNPACKING

Please ensure that the following items are included with the receiver in your packing.

- 1) Remote Control Unit (RCU)
- 2) Batteries (2EA)
- 3) CD with user manual
- 4) 12V 2.5A Adaptor



II. FEATURES

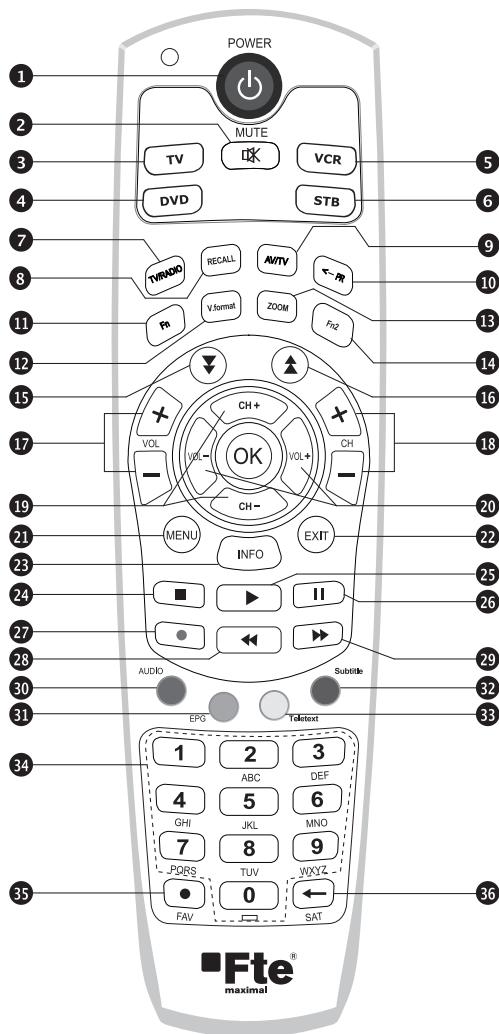
- Supports MPEG-2, MPEG-4, H.264 and fully DVB compliant
- Satellite & Terrestrial receiver
- 2 Slot smart card
- DiSEqC 1.0, 1.1 and 1.2
- Aspect ratio adjustment 4:3 (16/9 crop), 4:3 (16/9 letterbox), 16:9 (4/3 pillar box)
- User friendly OSD and operation
- Total 10,000 Channels Programmable
- Multi-language audio support / Multi-language menu text support
- Favorite channel selections
- Parental Guide and rating control
- EPG(Provider Electronic Program Guide) for On Screen Channel Information
- On-Screen Display with 65,536 Color
- Blind scan(Power Scan) & Powerful EPG
- Zoom Function in Pause
- Dolby Digital Bitstream Out through S/PDIF(Optical)
- Seletable output for 1080p, 1080i, 720p,576p and 576i format
- USB 2.0 Host (Access to HDD, USB memory, Others etc)
- Upgrade Software & Update Channel Database through USB 2.0 Port and RS232
- MP3 File Play by USB 2.0
- PVR Ready via USB
- Recorded file play on PC
- Reservation Recoding by EPG function
- Multimedia file play by USB 2.0
- Home streaming





GENERAL INFORMATION

III. REMOTE CONTROL UNIT (RCU)





GENERAL INFORMATION

III. REMOTE CONTROL UNIT (RCU)

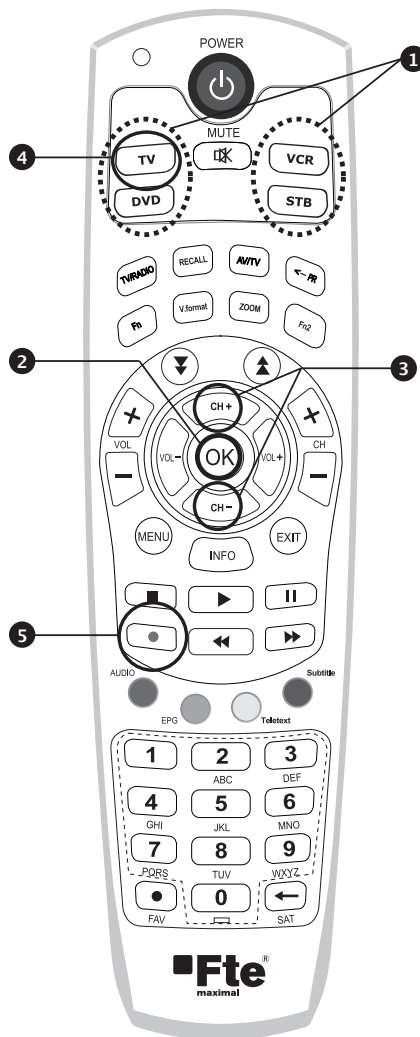
1. POWER	Switch the receiver between operation and standby mode.
2. MUTE	Enable or disable the audio.
3. TV	Switch to TV mode.
4. DVD	Switch to DVD mode.
5. VCR	Switch to VCR mode.
6. STB	Switch to STB mode.
7. TV / RADIO	Switch between TV and Radio.
8. RECALL	Select the previously viewed channel.
9. AV / TV	Select the TV or AV mode.
10. ←PR	Select the previously viewed channel.
11. Fn	Network File Manager / Reboot.
12. V. Format	Switch to HD Type.
13. ZOOM	Select Zoom IN/OUT.
14. Fn2	Reserved.
15. ▼	Move down a page in the channel list.
16. ▲	Move up a page in the channel list.
17. V+ / V-	Turn volume up or down.
18. P+ / P-	Change channels up or down on normal mode.
19. ▲▼	Change channel or move to the item in the menu.
20. ◀▶	Adjust the volume or move to left or move item in the menu.
21. MENU	Display the main menu on screen.
22. EXIT	Return to the previous menu or normal viewing mode from a menu.
23. INFO	Display the program information box on the screen and edit the name of favorite channel list.
24. STOP	Stop recording or playing.
25. PLAY	Display file lists and plays slow/normal.
26. PAUSE	Pause the playing picture or go to normal mode.
27. RECORD	Record the program.
28. REWIND	Start reverse playback and change the speed of reverse playback.
29. F / F	Start fast forward or fast motion playback and change the speed of forward playback.
30. AUDIO	Change the audio languages.
31. EPG	Display the TV or Radio program guide.
32. Subtitles	Enable subtitles mode.
33. Teletext	Enable teletext mode.
34. Numeric buttons	Select the TV or Radio service channels and individual menu.
35. FAV	Toggle the selected favorite mode.
36. SAT	Toggle the selected Satellite list.





GENERAL INFORMATION

IV. HOW TO SETTING RCU FOR TV





GENERAL INFORMATION

IV. HOW TO SETTING RCU FOR TV

I. Manual Search

At first, Turn on the TV

- 1) Press **① Device LED Key (STB or TV or VCR or DVD) + ② "OK" key** at the same time during 2 or 3 seconds.
Then the Device LED Lamp will be on → Setting Mode.
- 2) Find the 3-Digit code of Device in brand list and input 3-Digit code accordingly one by one. - The Device LED will be twinkled ontime one by one also. When you finish inputting 3-Digit, the Device (TV or VCR or DVD) will be turned off one time.
- 3) Then click OK to finish setting. (The Device LED will be turned off after twinkling 2 times.)

***NOTE :** If you are not able to find the TV code which you are watching currently, please perform the below "Auto Search". Then RCU will find the proper code automatically and it will work properly.

II. Auto Search (Using Up or Down key)

- 1) Press **① Device LED Key (STB or TV or VCR or DVD) + ② "OK" key** at the same time during 2 or 3 seconds.
Then the Device LED Lamp will be on → Setting Mode.
- 2) Press **③ Up or Down Key** of RCU to find out equivalent device. At the moment of RCU matching to the equivalent device, the device will be turned off.
- 3) Then click OK to finish setting. (The Device LED will be turned off after twinkling 2 times.)

III. Factory Reset

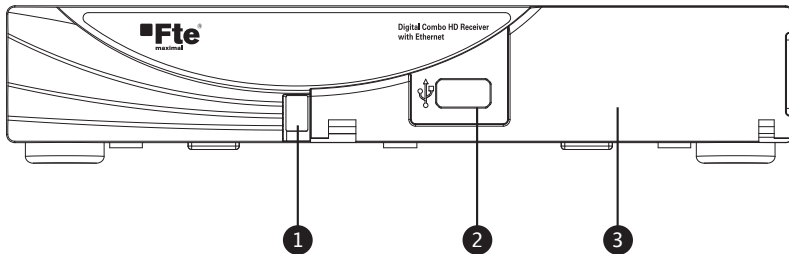
- 1) Press **④ TV LED + ⑤ REC button** at the same time during more than 5 seconds.
- 2) Device LED will be turn off/on "TV → DVD → VCR → STB" 3 times one by one and RCU will go to default mode.



GENERAL INFORMATION



V. FRONT PANEL



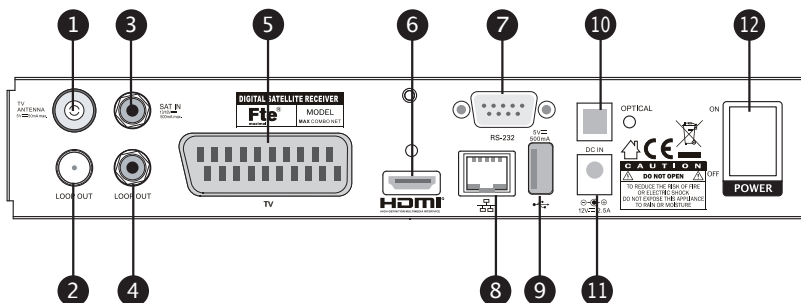
- | | |
|---------------|---|
| 1. POWER | Switch the receiver power On and Standby. |
| 2. USB | To upgrade firmware / Recording. |
| 3. SMART SLOT | Insert Smart Card. |

NOTE: All USB 2.0 flash drive may not be compatible with the product.



GENERAL INFORMATION

VI. REAR PANEL



- | | |
|------------------|--|
| 1. AERIAL | Connect to Terrestrial antenna cable. |
| 2. LOOP OUT | Connect to another STB. |
| 3. SAT IN | Connect to Satellite antenna cable. |
| 4. LOOP OUT | Connect to another STB. |
| 5. TV SCART | Connect to TV SCART cable. |
| 6. HDMI | Connect to HDMI jack of TV. |
| 7. RS 232 | Connect to personal computer for software upgrade. |
| 8. Ethernet | Connect to Lan cable. |
| 9. USB | Connect to USB device. |
| 10. OPTICAL | Output for connecting to a amplifier. |
| 11. ADAPTOR | Connect to Adaptor. |
| 12. POWER BUTTON | Turn On/Off. |



INSTALLING EQUIPMENT

This section explains several ways of connecting the receiver to your existing TV, VCR and Hi-Fi system.

You can choose one of the following setups that we recommend.

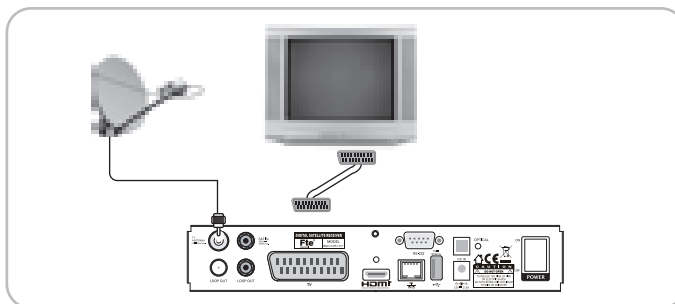
If you have any problem or need help, consult your dealer or service provider.

Please ensure that the following items are included with the receiver in your packing.

I. CONNECTING THE RECEIVER TO TV

I-1. Connecting the receiver to TV with the SCART cable

Connect one end of the SCART cable to the TV SCART socket on the rear panel of the receiver and the other end to a SCART socket on the TV.





CHANNEL LIST GUIDE

1. Normal Live Mode

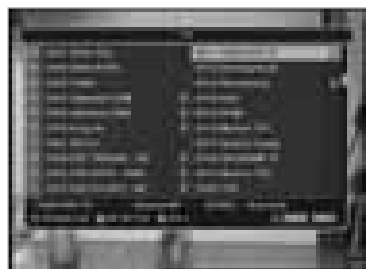
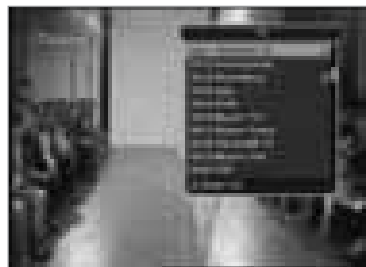
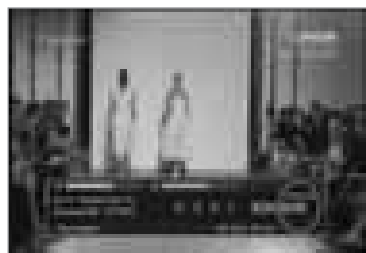
- a) When you select one channel, information bar appears automatically on the screen for few seconds. This bar provides you the current channel information.
- b) Press INFO button to see the information during normal live mode.

2. Simple Channel List

- a) Press OK on the normal live mode to go to the channel list.
- b) When detail channel list is displayed on screen press RED button to go to simple channel list.

3. Detail Channel List

- a) Press OK on the normal live mode to go to the channel list.
- b) When simple channel list is displayed on screen press RED button to go to detail channel list.
- c) Press ◀▶ and ▲▼ to sort by Alphabet.
- d) Press SAT button to sort by Satellite and FAV button for Favorite 1~8.
- e) Press GREEN button to return to All Channel or EXIT to return to the current live channel.
- f) Press the SAT key to show Satellite Pop-UP Window then select satellite. Channel list of selected satellite will be displayed.
- g) Press the FAV key to show Favorite Pop-UP Window then select FAV list. Channel list of selected FAV will be displayed.
- h) Press the Green key then all searched channel list will be displayed.





CHANNEL LIST GUIDE

4. EPG (Electronic Program Guide)

- a) Press EPG button on the live mode.
- b) EPG of the current channel appears on the screen.
- c) Select the channel that you want to watch program.
- d) It will be appear like rightside picture.

5. ZOOM IN/OUT

- a) By pressing ZOOM key in a normal live mode, you can use Zoom In/Out fuction.
- b) You can select zoom size with RED/GREEN key.
- c) You can select the start position with ▲▼◀▶ key.
- d) After select Zoom size and pision, you can start zoom function with OK key.
- e) With ▲▼◀▶ key, you can move zooming screen.





MENU GUIDE



MAIN PAGE

Press the MENU button on the RCU to open Main Page on the screen. Main Page will be displayed.

1. You can move into the main page using ▲▼◀▶ on the RCU.
2. Press OK to confirm your selection.
3. Press EXIT to return to the previous menu or press MENU to go to the current live channel.

I. Channel Manager IV. Utility
II. Installations V. Accessory
III. Options



I. CHANNEL MANAGER

This section may help you to organize channels according to your preference.

1. Select Channel Manager in the Main Page with ▲▼ and press OK.
2. TV Channel Manager Page displays on the screen.
3. Select the mode that you want using ◀▶.
4. To see the channel that you choose, go to the channel and then press RED button.
5. Press EXIT to return to the previous menu or press MENU to go to the current live channel.

I-1. Favorite

I-2. Rename

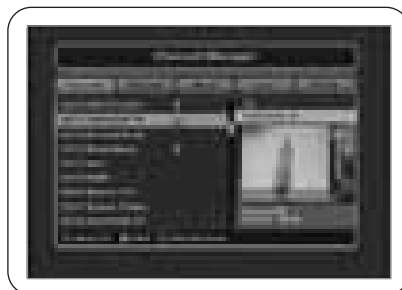
I-3. Move

I-4. Lock

I-5. Delete

I-1. Favorite

1. Using ◀▶ go to the Favorite mode then press YELLOW button to choose Favorite 1~8.
2. Press OK on the channel that you want to add or delete.
3. 📺 will be marked at the end of selected channel name bar. To delete press OK again.
4. Selected channels will be automatically saved.
5. If you want to check the saved Favorite Channel List go to other mode(Rename~Delete) except Favorite and then press FAV button to check Favorite 1~8.
6. Press EXIT to return to the previous menu or press MENU to go to the current live channel.
7. Press BLUE button to rename Favorite.





MENU GUIDE

I. CHANNEL MANAGER

I-2. Rename

1. Using ◀ ▶ go to the Rename mode.
2. Select the channel that you want to rename using ▲▼ and then press OK.
3. Keypad Dialog displays on the screen.
4. Edit the name entering NUMBERS and / or WORDS in the Keypad Dialog.
5. Press EXIT to return to the previous menu or press MENU to go to the current live channel.

I-3. Move

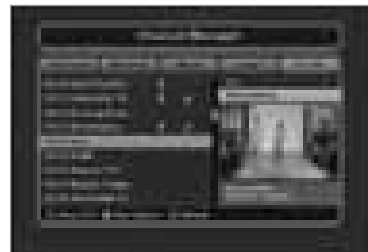
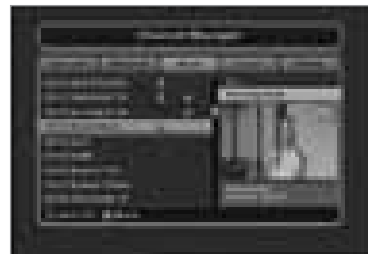
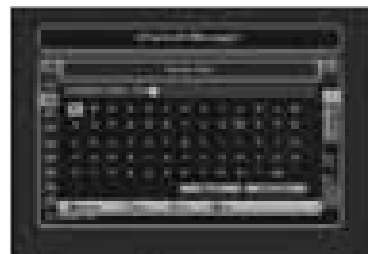
1. Using ◀ ▶ go to the Move mode.
2. Select channels which you want to move by pressing OK key.
3. Move cursor that you want to place on than press GREEN button.
4. Press EXIT to return to the previous menu or press MENU to go to the current live channel.

I-4. Lock

1. Using ◀ ▶ go to the Lock mode.
2. Select the channel that you want to lock and then press OK. will be marked at the end of the selected channel name bar. To delete press OK again.
3. Press EXIT to go to Main Page or press MENU to go to the current live channel.

I-5. Delete

1. Using ◀ ▶ go to the Delete mode.
2. Select the channel that you want to delete and then press OK. will be marked on the selected channel number. To delete press Blue button again.
3. Press YELLOW button to delete TP. Select one channel and press Blue button. All channels of that TP will be automatically selected.
4. Press YELLOW button to delete Satellite. Select one channel and press Blue button. All channels of that the Satellite will be automatically selected.
5. Press EXIT to return to the previous menu or press MENU to go to the current live channel.
6. Message Box displays on the screen.
7. Select OK on the Message Box and then press OK to delete the marked channels.





MENU GUIDE



II. INSTALLATION

This section may help you to set up antenna and scan satellite or transponder, etc. Select Installations in Main Page using ▲▼ and press OK.

Press EXIT to return to the previous menu or press MENU to go to the current live channel.

II-1. Satellite Search

II-2. DiSEqC Switch

II-3. Motor Setup

II-4. Terrestrial Search

II-5. Home Streaming

II-6. Factory Default

II-1 Satellite Search

1. You can move the cursor using ▲▼ and press OK when you select the value that you want.

a) Satellite

- Press OK to display the Satellite List Box.
- Select the proper Satellite and then press OK.

b) DiSEqC

- Press OK to display the DiSEqC Port List.
- Select the proper DiSEqC port and then press OK.

c) LNB

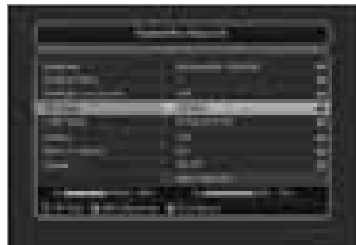
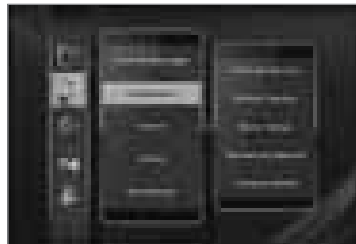
- Press OK to display the LNB Frequency List.
- Select the proper LNB Frequency and then press OK.
- You can also input directly the numbers using NUMBER KEY on the RCU.

d) 22KHz Tone

- Select the one among None, 0 KHz or 22 KHz depending on the user's antenna switch box.

e) Search Option

- Press OK to display the Search Option list.
- Select the Search Option that you want and then press OK.



※ TP EDIT : To Edit TP, Press the RED button on the RCU.

f) Search

- Press Search to start scan channels.
- SAT Rename : To rename SAT, Press the Green button on the RCU.





MENU GUIDE



II. INSTALLATION

II-2. DiSEqC Switch

1. Select Channel Search in Installation using ▲▼ and press OK.
- a) If you select DiSEqC Switch and press OK on the menu will be, DiSEqC Switch Page will be displayed.
- b) Select the proper Satellite of each DiSEqC port (A-D) using ◀▶ and ▲▼ and press SEARCH. Selected Satellites will be searched automatically.

II-3 Motor Setup

1. You can move the cursor using ▲▼ and press OK when you select the value that you want.
- a) Motor Type : DiSEqC 1.2, GOTO-X
 - Press OK to display Motor Type
 - Select the proper Motor Type and then press OK.
- b) Satellite
 - Press OK to Display the Satellite List Box
 - Select the proper Satellite and then press OK.
- c) Drive & Driver Step
 - Select the direction using ◀▶ (WEST/EAST).
- d) Frequency
 - Press OK to Display the Frequency List.
 - Select the proper Frequency and then press OK.
- e) Motor Movement
 - Search the appropriate position of the selected Satellite using ◀▶.





MENU GUIDE



II. INSTALLATION

f) Motor Control

Select the position using ◀ ▶ and then press OK.
Message box displays on the screen.

- **Store Sat position** : Stores the current position of the motor for the selected satellite.
- **Goto Sat Position** : Moves the motor to the stored position of the selected satellite.
- **Goto Center** : Goes to the center of the motor.
- **Limit off** : disable East, West limit.
- **Set East Limit** : Set current position as East Limit.
- **Set West Limit** : Set current position as West Limit.
- **Recaluation Position.**
- **Reset Position** : Resets all stored position of the motor.



g) Satellite Position

- Input directly the position using NUMBER KEY on the RCU
- Select the direction using ◀ ▶ (WEST / EAST).

h) Search Option

- Press OK to display the Search Option list.
- Select the Search Option that you want and then press OK.

i) Search

- Press Search to start scan channels.
- Press OK to start scanning.

※ **TP EDIT** : To Edit TP Press the RED button on the RCU.

2. Edit my local position

- Press Green Button to edit local Position.

a) Longitude

- Input directly the Longitude using NUMBER KEY on the RCU.
- Select the direction using ◀ ▶ (WEST / EAST).

b) Latitude

- Input directly the Latitude using UNMBER KEY on the RCU.
- Select the direction using ◀ ▶ (NORTH/SOUTHd).

3. Press EXIT to return to the previous menu or press MENU to go to the current live channel.





MENU GUIDE

II. INSTALLATION

II-4. Terrestrial Search

1. Select Channel Search in Installation using ▲▼ and press OK.
2. 1) Select the region where you are using ◀▶.
2) You can select searching type which you want among Auto and Manual using ◀▶.
- 3) Auto
 - a) Select 'Search' on the Screen and press OK button to scan channels.
 - b) Press Exit or Menu after finishing scanning.
- 4) Manual
 - a) Select Mux Channel which you want using ◀▶.
 - b) Frequency will be displayed automatically according to selected Mux Channel.



II-5. Home Streaming

1. PC setting

***Execute 'Home Streaming' program.

- a) Go to 'Preference' Tab.
- b) Select 'Default URL' check-box and assign the download folder by using "Browse" button It is assigned to "c:\download" but must specify the destination folder personally to be able to receive movie files in PC.

※Note: Only default server available currently.



2. STB setting

- a) Go to Home streaming menu (Menu → Accessory → Network → Home streaming) and Click Home Streaming.
- b) IP-Name Edit Pad will appear & Input Server IP by numeric buttons of RCU.
- c) The IP address must be same as IP address shown in preference tap of Home Streaming program.





MENU GUIDE

II. INSTALLATION

3. Playing the Movie File by Home Streaming

- Press "Fn" key of RCU in normal view of STB and then the movie file list in PC will be appeared in TV Screen.
- Select the file which you want to see by using navigation keys of RCU and press "OK" buttons to play the movie file.

※Please see the right picture for better understanding.



II-6. Factory Default

Use Factory Default function only when you want to return the receiver to the condition of factory default. All settings and channels will be deleted.

- Select Factory Default in Installations using ▲▼ and press OK.
- Message box displays on the screen.
- Select OK to return the receiver to the condition of factory default and then press OK.
- Press EXIT to return to the previous menu or press MENU to go to the current live channel.





MENU GUIDE

III. OPTIONS

This section may help you to set up OSD language, time, etc. Select Options in Main Page using ▲▼ and press OK.

Press EXIT to return to the previous menu or press MENU to go to the current live channel.

III-1. OSD Setup

III-2. Control Panel

III-3. Time Adjust

III-4. Parental Lock

III-1. OSD Setup

1. Select OSD Setup in Options using ▲▼ and press OK.

a) OSD Language

- Press OK to display OSD Language list.
- Select the language that you want and then press OK.

b) Audio Language

- Press OK to display Audio Language list.
- Select the language that you want and then press OK.

c) Subtitle Language

- Press OK to display Subtitle.
- Select the language that on want and then press OK.

d) Display Info Bar

- Press OK to display Display Info Bar time list.
- Select the second that you want to display and then press OK.

e) Transparency

- Adjustment of transparency level.

2. Press EXIT to return to the previous menu or press MENU to go to the current live channel.





MENU GUIDE



III. OPTIONS

III-2. Control Panel

1. Select TV Setup in Options using ▲▼ and press OK.

a) HD Type

- Select HD video Output.

b) TV Type

- Select your TV type.

c) Aspect Ratio

- Select screen ratio.

d) Screen Control

- Select screen display modes.

e) Brightness

- Adjustment of screen brightness.

f) Contrast

- Adjustment of screen contrast.

g) Saturation

- Adjustment of screen Saturation.

2. Press EXIT to return to the previous menu or press MENU to go to the current live channel.

III-3. Time Adjust

Set your local time according to your location.

1. Select Time Setup in Options using ◀▶ and press OK.

2. Time Adjust page displays on the screen.

3. Move the cursor using ◀▶, ▲▼ and press OK when you select the value that you want. (Input Hour directly using number keys on the RCU)

4. Press EXIT to return to the previous menu or press MENU to go to the current live channel.

III-4. Parental Lock Setup

1. Select Parental Lock Setup in Options using ◀▶ and press OK.

2. Parental Lock Page displays on the screen.

3. You can lock and unlock Parental Lock selecting ON or OFF using ◀▶ (For Channels).

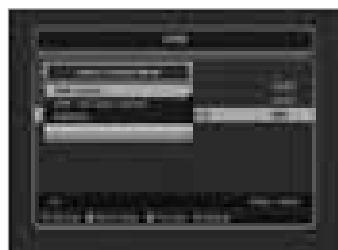
4. You can lock and unlock Install Lock selecting ON or OFF using ◀▶ (For Installation Settings).

5. Enter new password if you want to change the current password.

6. Confirm your new password entering new password again.

7. Press EXIT to return to the previous menu or press MENU to go to the current live channel.

Note. DEFAULT PASSWORD IS 0000





MENU GUIDE



IV. UTILITY

This section may help you to use USB, etc.
Select Utility in Main Page using ▲▼ and press OK.

- IV -1. System Information
- IV -2. Timer
- IV -3. Calendar

IV-1. System Information

This option help you to know the current S/W and H/W version. Also provides you the product name.

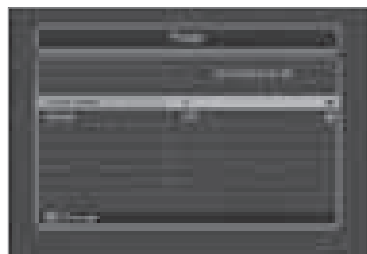
1. Select System Information in Options using ▲▼ and pres OK.
2. Press EXIT to return to the previous menu.

IV-2. Timer

The Unit(Set top box) will be turned off/on automatically after a specified time

IV-3. Calendar

Use ▲▼ buttons to move to Calendar and press OK button. Will appear calendar on screen Use ◀▶▲▼ buttons to move between dates in a month or / buttons to go previous or next Month.
Press Exit buttons to exit.





MENU GUIDE



V. ACCESSORY

This section may help you to use USB, etc.
Select Utility in Main Page using ▲▼ and press OK.

- V-1. USB
- V-2. Smart Card
- V-3. Network / Videoclub

V-1 USB

The receiver is equipped with host.

1. Select USB in Utility with ▲▼ and press OK.
2. If you want to save Software or Database, press Green button on the RCU.
3. Select the file which you want to save using ▲▼ and OK button.
4. After downloading the selected file, the receiver will reboot automatically.

V-2 Smart Card

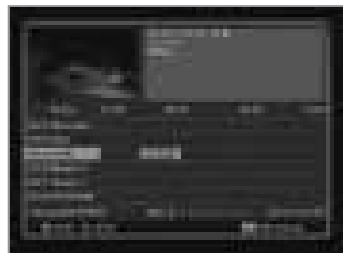
The receiver is equipped with two slots of various Smart Card which have access to the scrambled the pay per view services. The programs that can be descrambled are determined by the smart card that you use.

1. Select Smart Card in ACCESSORY menu with ▲▼ and press OK.
2. Insert Smart Card into Slot 1 or 2, then STB displays Smart card name on the screen.
3. The name of the Slot differs according to each Smart card.
4. Press EXIT to return to the previous menu or press MENU to go to current live channel.

V-3 Network / Videoclub

This menu support multiple functions such as below:

1. SW downloading by Web.
2. Home-Streaming.
3. Youtube.
4. VideoClub.
5. RSS feed / Twitter / Weather information.
6. Downloading channel Data.





PVR GUIDE



PVR GUIDE

This section may help you how to use PVR function on this STB.

I. Recommended Devices

If you want to use PVR function, you need to prepare equipment as below.

- External USB Hard Disk Drive.
- Flash memory stick
- Format Type: FAT16/32 (System does not support NTFS and other file system)

II. Record Function

II-1 Reserved Recording

1. Time Reserved Recording

: Set desired recording time- in "Utility → Timer" to record at set time.

NOTE : How to set up before you start "Time Record"

- STB set up in default.
- Please change "OFF" to "Recording" in Active menu.
- Once you set "Recording" in Active menu, you will see the detail menu for PVR. (Cycle, Channel Type, Channel name, Start Time, Duration).

- Press the "Ok" button to select Channel Name.

2. EPG Reserved Recording

: Used to record a selected event from EPG.

- Press the EPG button to go into EPG menu while watching a program on screen.
- To select event play on time: Move from the EPG to select the event and press the "RECORD button" on RCU.
- If you want cancellation, press more "RECORD button" once.
- If you want several reserved recording, move and press the "RECORD button" on RCU.





PVR GUIDE



PVR GUIDE

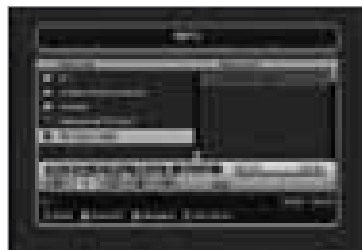
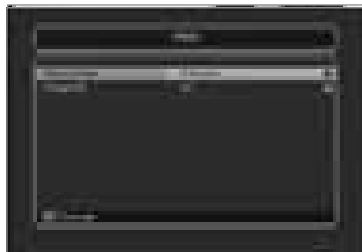
II. Record Function

II-2 Instant Recording

- Press "RECORD button" on RCU to start recoding program.
- While Recoding program
- Press "PAUSE" key to execute "Time Shift"
- You can use "LEFT/RIGHT button" to view desired time while recoding program.
- Press "OK button" on RCU to display Recording file list

During Recording you can watch also other channels which are located in same TP. In case of watching other channels during recording, You should come back to the recording channels in channel list to stop recording.

- If you press "STOP button" on RCU, current program you are watching will stop and Live TV will be stored in USB memory space.





PVR GUIDE



PVR GUIDE

III. Playback Function

- To play previously recorded program, press "Play button" on RCU.
- Use the arrow buttons to select the file which you want to play and press "OK button" to play.
- While Playing program.
- If you press "LEFT/RIGHT button" on RCU button while recoding live TV or recorded file play, current program you were watching will stop and picture will re-restart from where it was moved by "LEFT/RIGHT button" on RCU.

IV. Trick Mode Function

- If you want to play other recorded file during Playback, press "Play" button.
- If you press "FF(Fast Forward) button" during Timeshift or Playback, the file will be played at 2X speed and if you press the "FF button" one more time, the file will be played to 8X speed.
- If you press the "REW(Rewind) button" during Timeshift or Playback, the file will rewind at 2X speed and if you press the "REW button" one more time, the file will rewind to 8x speed.
- FF/REW function will back to normal play if you press "PLAY button".





PVR GUIDE

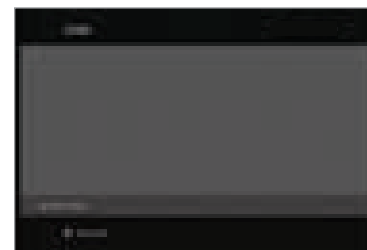
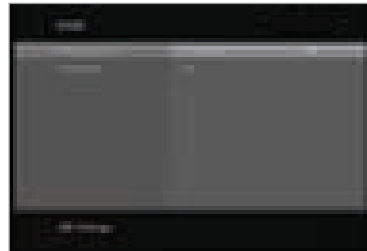
PVR GUIDE

V. Time Shift Function

- If you want to execute "Time Shift" in Live mode You should set "On" of Time Shift In PVR Option (Accessory → PVR → TimeShift "ON").
- To star Time Shift in Live mode, press "PAUSE" to start.
- Time shift will played during 30 minutes in Live Mode.
- To start "Play back" during Timeshift press "PLAY" key.
- You can move "play position" using LEFT/RIGHT button during Time Shift.

VI. Format

- You can do FAT32 Format the HDD formatted by FAT32 and NTFS also.
- You can do Format also the multi partitioned HDD.
- When NTFS formatted HDD is inserted, POPUP message will appear.
- Press "OK" button to move to "C:, D:, E:, F: NEXT°" in case of Multi partitioned HDD.
- In case of NTFS multi partitioned HDD, you must format by FAT 32.





PVR GUIDE



PVR GUIDE

VII. MP3 Play

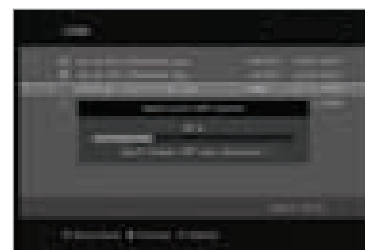
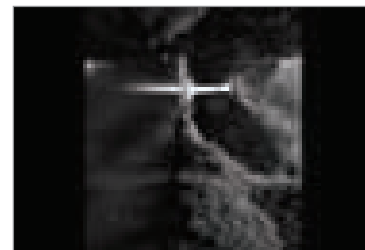
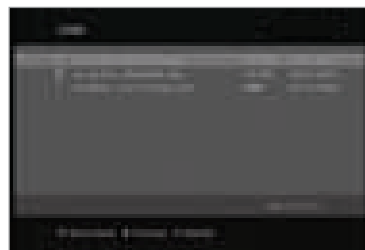
- Select MP3 file which you want to play in USB menu.
- After you select MP3 file, MP3 play window will be executed.

VIII. JPG View

- Select JPG file which you want to see in USB menu.
- Press OK to see the JPG which you want to.
- You can rotate the image by using LEFT/RIGHT button.

IX. Software Upgrade

- Select * UAD file which you want to upgrade in USB menu.





PVR GUIDE



PVR GUIDE

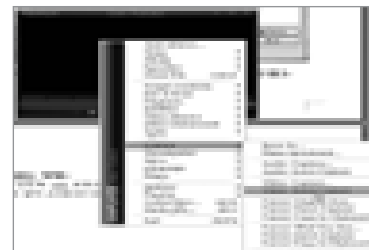
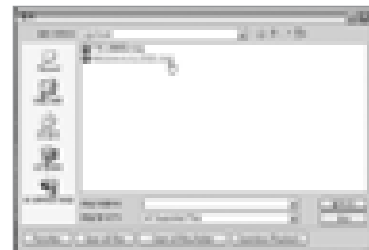
X. How to play the record by PVR of 'HD-XXX' in PC or Divx Player

X-1 How to play in PC

- A) Play KM Player.
- B) Select Language.
 - 1) Click right button of Mouse → Language → your language.
- C) Change the extension name of the recorded file to *.mpg".
※ Example : Welcome to A_131821 → Welcome to A_131821.mpg
- D) Select the file which you want to play.
 - 1) Click right button of Mouse → Open Files(S) → Select.

X-2 How to Play in "Divx Player"

- A) The file format must be changed to ".avi" format to play in DivX Player.
 - 1) Click right button of Mouse → Capture → Select Capture Folder.
- C) Repeat A) → B) → C) → D) of No.1 how to play in PC.
- D) Capture the file which is being played currently to convert into *.avi.
 - 1) Click right button of Mouse → Capture → Video Quick Capture.
 - 2) Then the playing file is saved in designated folder by *.avi format.
- E) If the playing file is STB SD channel, it is saved by SD and If the file is HD or H.264 it saved by HD or H.264. If user does not have DivX player which can play HD or H.264 (at least CPU sigma8634), he must convert the file SD so that the general SD DivX player (CPU sigma8511) can play the file.





PVR GUIDE



PVR GUIDE

X-3 How to Convert the file by Divx Manager

- A) Play Divx Manager.
 - 1) Setting → Model → Rapsody RSH-250/350
- B) Select the folder where the file that you want to convert is. Then the file's information will appear.
- C) And select the file which you want to convert and select "Convert".
- D) Select "Encoding Start" → It starts "Converting".

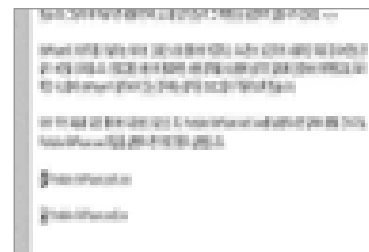
NOTE: Web site for downloading

1. Kmplayer

- 1) Enter this site : <http://2bwithu.tistory.com/245>.
- 2) Download 2 files to 1 folder and unzip the archived file. After unzip, you can install only click exe file.

2. Divx Manger

- 1) Enter this site : <http://www.modix4u.co.kr/upboard/view.asp?fcprimkey=44>
- 2) Click below for English version.





PVR GUIDE



PVR GUIDE

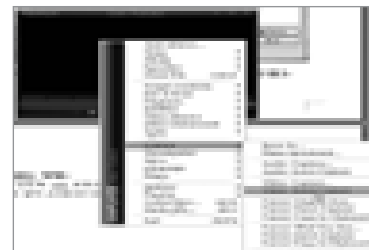
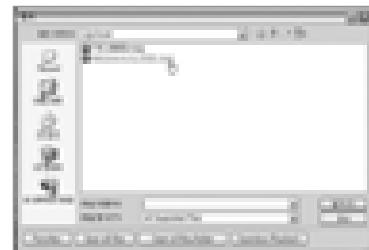
X. How to play the record by PVR of 'HD-XXX' in PC or Divx Player

X-1 How to play in PC

- A) Play KM Player.
- B) Select Language.
 - 1) Click right button of Mouse → Language → your language.
- C) Change the extension name of the recorded file to *.mpg".
 - ※ Example : Welcome to A_131821 → Welcome to A_131821.mpg
- D) Select the file which you want to play.
 - 1) Click right button of Mouse → Open Files(S) → Select.

X-2 How to Play in "Divx Player"

- A) The file format must be changed to ".avi" format to play in DivX Player.
- B) Select a destination folder where to be saved the file which will be changed to *.avi.
 - 1) Click right button of Mouse → Capture → Select Capture Folder.
- C) Repeat A) → B) → C) → D) of No.1 how to play in PC.
- D) Capture the file which is being played currently to convert into *.avi.
 - 1) Click right button of Mouse → Capture → Video Quick Capture.
 - 2) Then the playing file is saved in designated folder by *.avi format.
- E) If the playing file is STB SD channel, it is saved by SD and If the file is HD or H.264 it saved by HD or H.264. If user does not have DivX player which can play HD or H.264 (at least CPU sigma8634), he must convert the file SD so that the general SD DivX player (CPU sigma8511) can play the file.





SPECIFICATIONS

I. Conditional Access Module Interface

Item	Specification
SMART CARD	2 SLOTS, ISO 7816, GSM11.11 and EMV (payment systems) compatibility

II. Tuner & Channel (DVB-S2)

Item	Specification
Type	1 × F Type, IEC169-24, Female
Frequency Range	950MHz to 2150MHz
RF Impedance	75 Ohm unbalanced
Signal Level	-65 to -25 dBm
LNB Power	13.5/18.5Vdc +/- 5%, 0.5Amax, Overload Protected
22KHz Tone	Frequency : 22KHz +/- 2KHz, 0.6Vpp +/- 0.2V
DiSEqC Control	Version1.0, 1.2, Tone burst A/B
Demodulation	QPSK, 8PSK
Input Symbol Rate	DVB-S QPSK : 2~45 Msps DVB-S2 8PSK/QPSK : 10~30Msps
FEC Decoder	1/2, 2/3, 3/4, 3/5, 4/5, 5/6, 8/9, 9/10 in DVB-S2 mode. 1/2, 2/3, 3/4, 5/6 and 7/8 in DVB-S mode.

III. Tuner & Channel (DVB-T)

Item	Specification
Type	IEC60169-2[VHF/UHF] female, 75 ohm nominal
Frequency Range	VHF : 170MHz to 230MHz UHF : 470MHz to 862MHz
Signal Level	-78.5dBm ~ -25dBm (64QAM, Code Rate 2/3, Guard Interval 1/8, Gaussian Channel)
COFDM Spectrum	COFDM 2K/8K-Carrier
FEC Mode	1/2, 2/3, 3/4, 5/6, 7/8

IV. System & Memory

Item	Specification
Main Processor	STi7110
Flash Memory	8 Mbytes
DDR Memory	128 Mbytes
Channel Capacity	Digital Channel : 10,000
Front	1-Key(Power), 7-SEGMENT DISPLAY





SPECIFICATIONS

V. MPEG Transport Stream & A/V Decoding

Item	Specification
Transport Stream	13818-1 MPEG-2, H.264/AVC Transport stream Specification
Profile Level	MPEG-2 MP@ML, MP@HL, MPEG-4 H.264/AVC
Input Rate	Max. 90Mbit/s
Aspect Ratio	4:3, 16:9, Letter Box
Frame Rate	25Hz for PAL, 30Hz for NTSC
Video Resolution	576i, 576p, 720p, 1080i
Teletext	Through VBI
Audio Decoding	MPEG-1 Layer 1 & 2, Dolby Downmix
Audio Mode	Single Channel/Dual Channel Joint Stereo/Stereo
Frequency Response	20~20kHz, <+/-2dB or 60Hz ~ 18kHz <+/- 0.5dB
Sampling Rate	32, 44.1, 48KHz

VI. A/V & Data In/Out

Item	Specification
HDMI	HD Video/Audio Output
TV SCART Output	RGB, CVBS, L, R Output with Volume control
SPDIF	Dolby Digital Bitstream Out (Optical)
Data Interface	<ul style="list-style-type: none">- RS-232, Bit Rate : 115,200baud- Connector : 9-pin D-sub Male type- USB : USB 2.0, Type A Connector- Ethernet : 10/100Mbps, DHCP Supporting

VII. Power Supply

Item	Specification
Input Voltage	AC 90V ~ 250V, 50Hz ~ 60Hz
Power	12V 2.5A Adaptor

VIII. Physical Specification

Item	Specification
Size(WxHxD)	230mm x 40mm x162mm
Weight	1.4 KG

IX. Environmental Condition

Item	Specification
Operating Temperature	0 °C ~ 40 °C
Storage Temperature	-10 °C ~ 50 °C
Operating Humidity Range	10~85% RH, Non-condensing
Storage Humidity Range	5~90% RH, Non-condensing

