

User Manual

Revision 1.000
English

PROFINET / PROFIBUS Slave - Converter

(Order Code: HD67605-A1)

for Website information:

www.adfweb.com?Product=HD67605

for Price information:

www.adfweb.com?Price=HD67605-A1

Benefits and Main Features:

- ▶ Very easy to configure
- ▶ Electrical isolation
- ▶ Two PROFINET ports
- ▶ Temperature range: -40°C/85°C (-40°F/185°F)



Other Products

For others PROFINET products see also the following link:

Converter PROFINET to

- www.adfweb.com?Product=HD67608
- www.adfweb.com?Product=HD67609
- www.adfweb.com?Product=HD67610
- www.adfweb.com?Product=HD67600
- www.adfweb.com?Product=HD67601
- www.adfweb.com?Product=HD67602
- www.adfweb.com?Product=HD67602
- www.adfweb.com?Product=HD67603
- www.adfweb.com?Product=HD67603
- www.adfweb.com?Product=HD67604
- www.adfweb.com?Product=HD67606

- (DeviceNet Master)**
- (DeviceNet Slave)**
- (J1939)**
- (NMEA2000)**
- (Serial RS232)**
- (Serial RS485)**
- (Modbus Master RS232)**
- (Modbus Master RS485)**
- (Modbus Slave RS232)**
- (Modbus Slave RS485)**
- (PROFIBUS Master)**
- (CAN)**

Do you have an your customer protocol?

www.adfweb.com?Product=HD67003

Do you need to choose a device? do you want help?

www.adfweb.com?Cmd=helpme

INDEX:

	Page
INDEX	2
UPDATED DOCUMENTATION	2
REVISION LIST	2
WARNING	2
TRADEMARKS	2
SECURITY ALERT	3
EXAMPLE OF CONNECTION	4
CONNECTION SCHEME	5
CHARACTERISTICS	6
CONFIGURATION	6
POWER SUPPLY	7
FUNCTION MODES	8
LEDS	9
PROFIBUS	10
PROFINET	10
USE OF COMPOSITOR SW67605	11
NEW PROJECT / OPEN PROJECT	11
SET COMMUNICATION	12
PROFINET XML	13
PROFIBUS GSD	13
UPDATE DEVICE	14
MECHANICAL DIMENSIONS	16
ORDERING INFORMATIONS	17
ACCESSORIES	17
PLC CONFIGURATION	18
DISCLAIMER	21
OTHER REGULATIONS AND STANDARDS	21
WARRANTIES AND TECHNICAL SUPPORT	22
RETURN POLICY	22
PRODUCTS AND RELATED DOCUMENTS	22

UPDATED DOCUMENTATION:

Dear customer, we thank you for your attention and we remind you that you need to check that the following document is:

- Updated
- Related to the product you own

To obtain the most recently updated document, note the "document code" that appears at the top right-hand corner of each page of this document.

With this "Document Code" go to web page www.adfweb.com/download/ and search for the corresponding code on the page. Click on the proper "Document Code" and download the updates.

To obtain the updated documentation for the product that you own, note the "Document Code" (Abbreviated written "Doc. Code" on the label on the product) and download the updated from our web site www.adfweb.com/download/

REVISION LIST:

Revision	Date	Author	Chapter	Description
1.000	07/09/2012	Dp	All	First Release

WARNING:

ADFweb.com reserves the right to change information in this manual about our product without warning.
ADFweb.com is not responsible for any error this manual may contain.

TRADEMARKS:

All trademarks mentioned in this document belong to their respective owners.

SECURITY ALERT:**GENERAL INFORMATION**

To ensure safe operation, the device must be operated according to the instructions in the manual. When using the device are required for each individual application, legal and safety regulation. The same applies also when using accessories.

INTENDED USE

Machines and systems must be designed so the faulty conditions do not lead to a dangerous situation for the operator (i.e. independent limit switches, mechanical interlocks, etc.).


QUALIFIED PERSONNEL

The device can be used only by qualified personnel, strictly in accordance with the specifications.

Qualified personnel are persons who are familiar with the installation, assembly, commissioning and operation of this equipment and who have appropriate qualifications for their job.

RESIDUAL RISKS

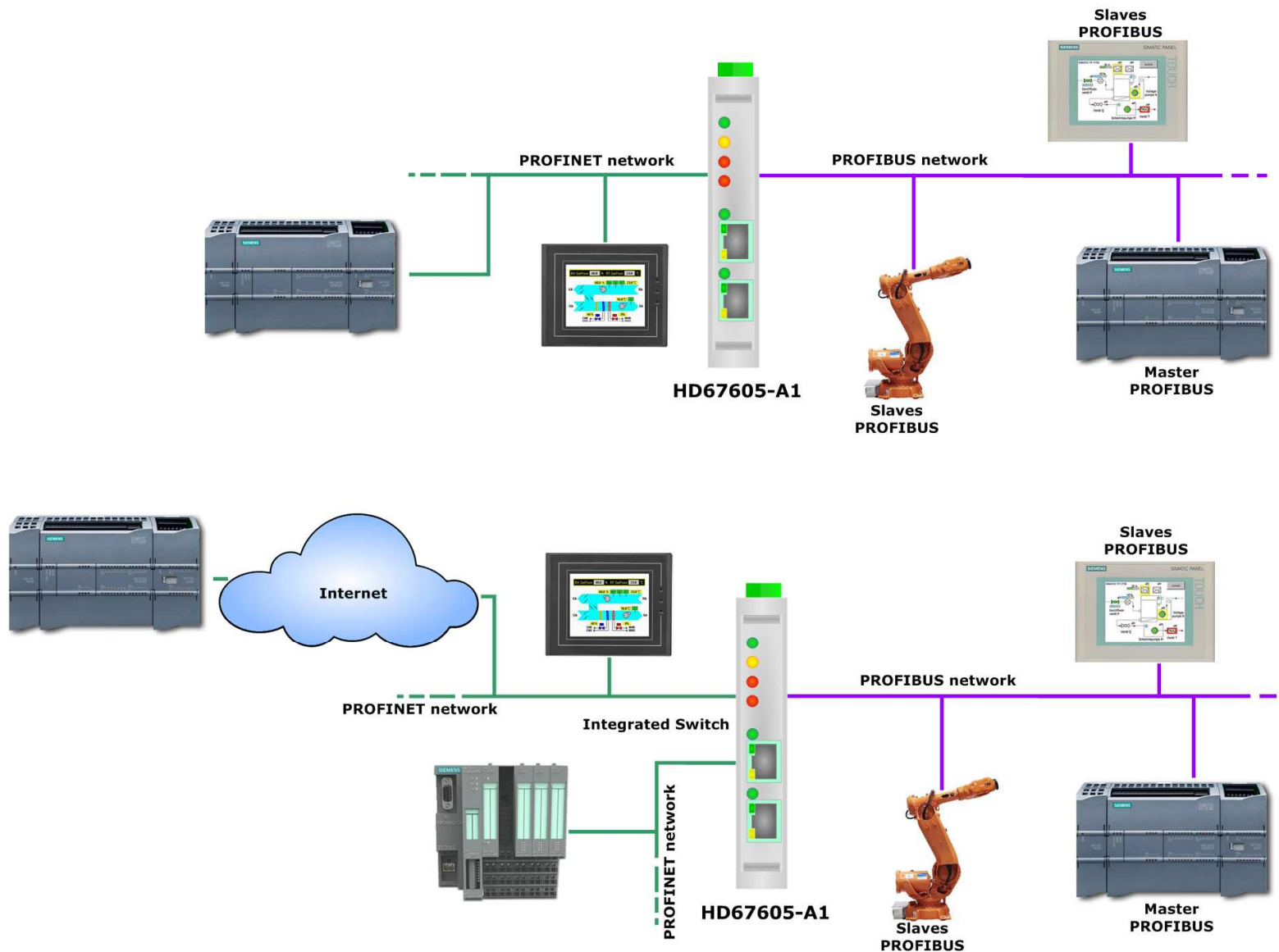
The device is state of the art and is safe. The instrument can represent a potential hazard if they are inappropriately installed and operated by personnel untrained. These instructions refer to residual risks with the following symbol:

 This symbol indicates that non-observance of the safety instructions is danger for people to serious injury or death and / or the possibility of damage.

CE CONFORMITY

The declaration is made by us. You can send an email to support@adfweb.com or give us a call if you need it.

EXAMPLE OF CONNECTION:



CONNECTION SCHEME:

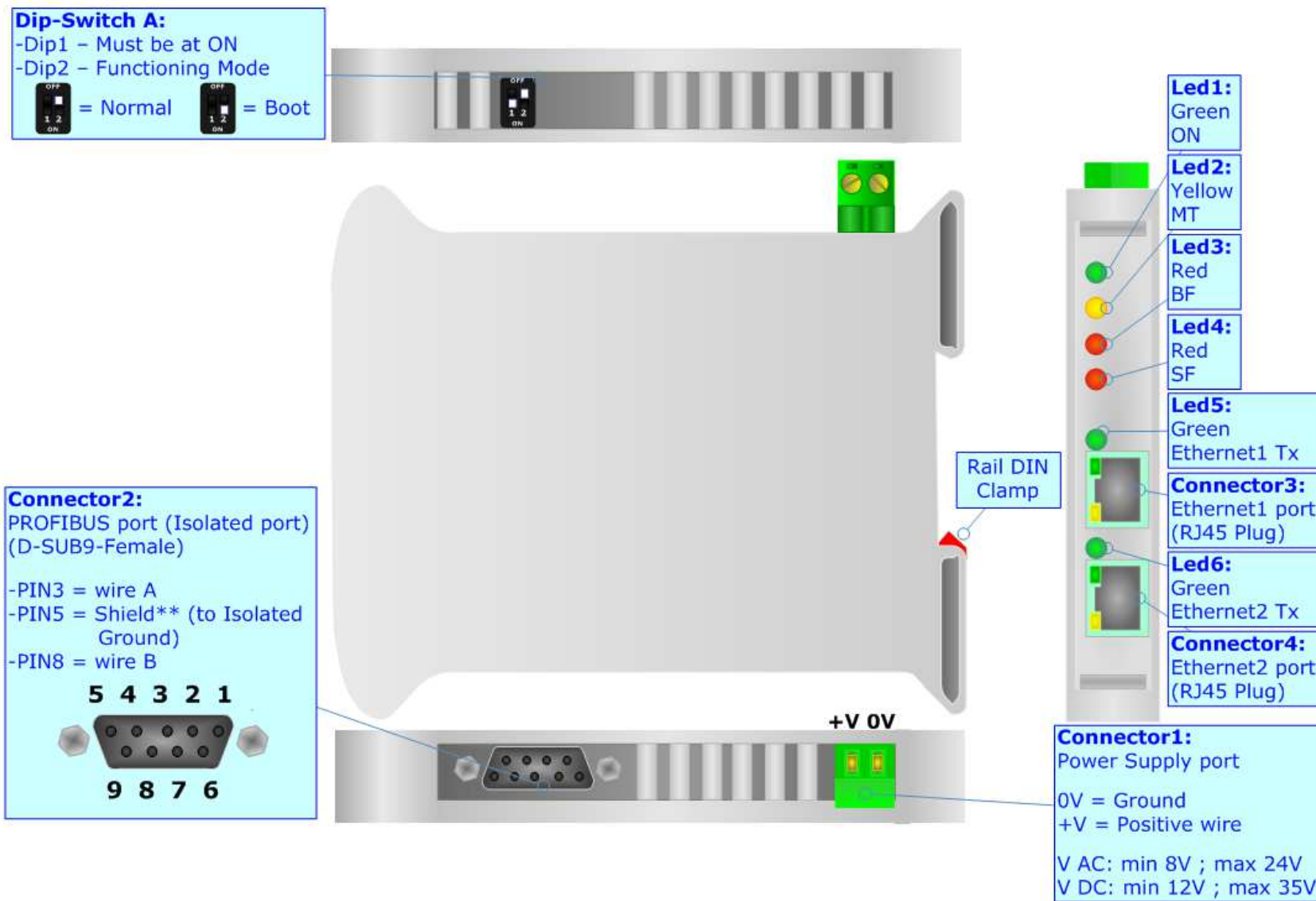


Figure 1: Connection scheme for HD67605-A1

CHARACTERISTICS:

The HD67605-A1 is a PROFINET / PROFIBUS Slave Converter.

It allows the following characteristics:

- Up to 244 bytes in reading and 244 bytes in writing;
- Triple isolation between PROFIBUS - Power Supply, PROFIBUS - Ethernet, Power Supply - Ethernet.
- Two-directional information between PROFIBUS bus and PROFINET bus;
- Mountable on 35mm Rail DIN;
- Wide power supply input range: 8...24V AC or 12...35V DC;
- Wide temperature range: -40°C / 85°C [-40°F / +185°F].



CONFIGURATION:

You need Compositor SW67605 software on your PC in order to perform the following:

- Define the parameter of PROFINET line;
- Define the parameter of PROFIBUS line;
- Update the device.

POWER SUPPLY:

The devices can be powered at 8...24V AC and 12...35V DC. For more details see the two tables below.

VAC 		VDC 	
Vmin	Vmax	Vmin	Vmax
8V	24V	12V	35V

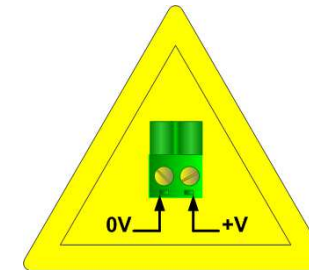
Consumption at 24V DC:

Device	Consumption [W/VA]
HD67605-A1	3.5

Connector1:
 Power Supply port
 0V = Ground
 +V = Positive wire
 V AC: min 8V ; max 24V
 V DC: min 12V ; max 35V



Caution: Not reverse the polarity power



HD67605-A1

FUNCTION MODES:

The device has got two functions mode depending of the position of the 'Dip2 of Dip-Switch B':

- The first, with 'Dip2 of Dip-Switch B' at "OFF" position, is used for the normal working of the device.
- The second, with 'Dip2 of Dip-Switch B' at "ON" position, is used for upload the Project and/or Firmware.

For the operations to follow for the updating, see 'UPDATE DEVICE' section.

According to the functioning mode, the LEDs will have specifics functions, see 'LEDS' section.

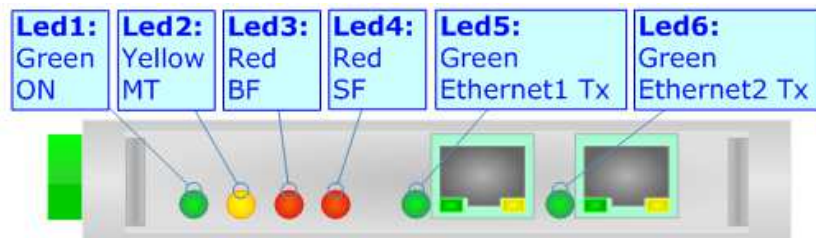
**Warning:**

Dip1 of 'Dip-Switch B' must be at ON position for working even if the Ethernet cable isn't inserted.

LEDS:

The device has got six LEDs that are used to give information of the functioning status. The various meanings of the LEDs are described in the table below.

LED	Normal Mode	Boot Mode
1: ON [supply voltage] (green)	ON: Device powered OFF: Device not powered	ON: Device powered OFF: Device not powered
2: MT [maintenance display] (yellow)	ON: Maintenance Problem is present OFF: No maintenance are present	Blinks quickly: Boot state Blinks very slowly (~0.5Hz): update in progress
3: BF [bus fault] (red)	ON: The Ethernet connection is defective; the IP address exists several times in the network; the own NameOfStation exists several times in the network; no IP address has been set Flashing: At least one configured AR is no longer in the data exchange OFF: No errors are present	Blinks quickly: Boot state Blinks very slowly (~0.5Hz): update in progress
4: SF [group error] (red)	ON: At least one AR is not in the data exchange OFF: No errors are present	Blinks quickly: Boot state Blinks very slowly (~0.5Hz): update in progress
5: Ethernet1 Tx (green)	Blinks when is transmitting Ethernet frames	Blinks quickly: Boot state Blinks very slowly (~0.5Hz): update in progress
6: Ethernet2 Tx (green)	Blinks when is transmitting Ethernet frames	Blinks quickly: Boot state Blinks very slowly (~0.5Hz): update in progress

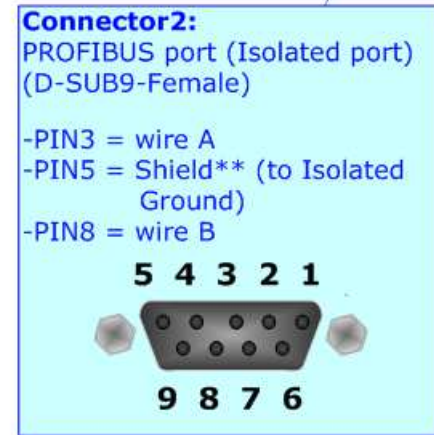


PROFIBUS:

The PROFIBUS uses a 9-pin D-SUB connector. The pin assignment is defined like in the right figure.

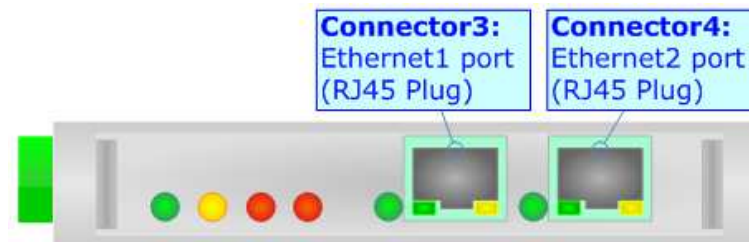
Here some codes of cables:

- Belden: p/n 183079A - Continuous Armor DataBus® ISA/SP-50 PROFIBUS Cable.



PROFINET:

The PROFINET connection must be made using Connector3 and/or Connector4 of HD67605-A1 with at least a Category 5E cable. The maximum length of the cable should not exceed 100m. The cable has to conform to the T568 norms relative to connections in cat.5 up to 100 Mbps. To connect the device to an Hub/Switch is recommended the use of a straight cable, to connect the device to a PC/PLC/other is recommended the use of a cross cable.



USE OF COMPOSITOR SW67605:

To configure the Converter, use the available software that runs with Windows, called SW67605. It is downloadable on the site www.adfweb.com and its operation is described in this document. *(This manual is referenced to the last version of the software present on our web site).* The software works with MSWindows (MS 2000, XP, Vista, Seven, 8; 32/64bit).

When launching the SW67605 the right window appears (Fig. 2).

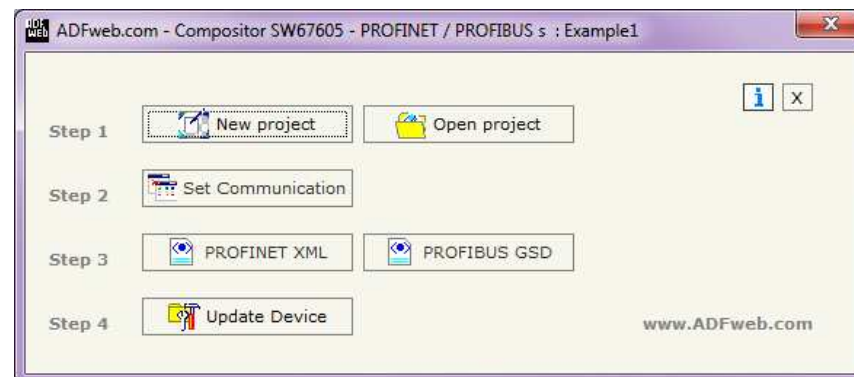
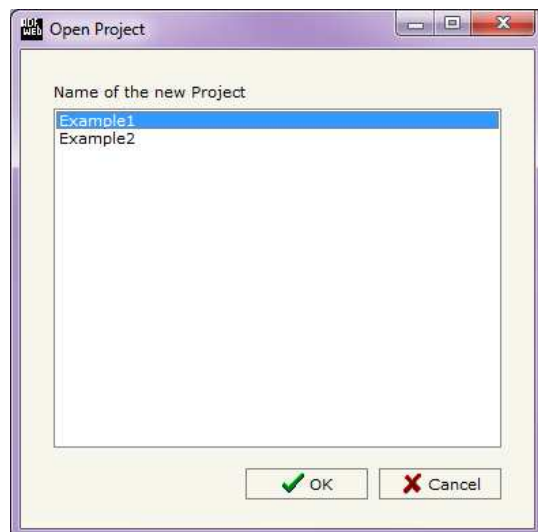
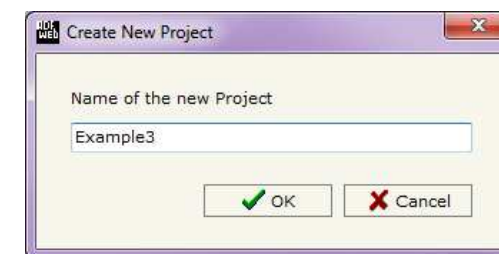


Figure 2: Main window for SW67605

NEW PROJECT / OPEN PROJECT:

The **"New Project"** button creates the folder which contains the entire device configuration.



A device configuration can also be imported or exported:

- To clone the configurations of a programmable "PROFINET / PROFIBUS Slave – Converter" in order to configure another device in the same manner, it is necessary to maintain the folder and all its contents;
- To clone a project in order to obtain a different version of the project, it is sufficient to duplicate the project folder with another name and open the new folder with the **"Open Project"**.

SET COMMUNICATION:

This section define the fundamental communication parameters of two buses, PROFINET and PROFIBUS Slave.

By Pressing the "**Set Communication**" button from the main window for SW67605 (Fig. 2) the window "Set Communication" appears (Fig. 3).

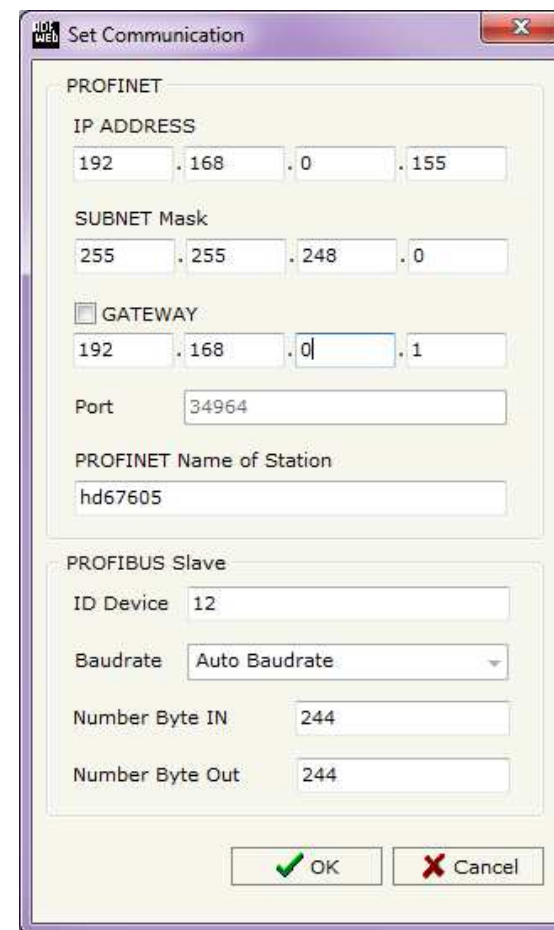
The window is divided in two sections, one for the PROFINET and the other for the PROFIBUS Slave.

The means of the fields for "PROFINET" are:

- In the fields "**IP ADDRESS**" insert the IP address that you want to give to the Converter;
- In the fields "**SUBNET Mask**" insert the SubNet Mask;
- In the fields "**GATEWAY**" insert the default gateway that you want to use. This feature can be enabled or disabled pressing the Check Box field. This feature is used for going out of the net;
- In the field "**Port**" the port used for PROFINET communication is defined. The port has a fixed value of 34964;
- In the field "**PROFINET Name of Station**" is possible to assign a name to the PROFINET node.

The means of the fields for the "PROFIBUS Slave" section are:

- In the "**ID Device**" field the PROFIBUS Slave ID is defined.
- In the "**Baudrate**" field the PROFIBUS Slave baudrate is defined (fixed to Auto Baudrate).
- In the field "**Number Byte IN**" the number input bytes of PROFIBUS Slave is defined (at max 244 bytes);
- In the field "**Number Byte OUT**" the number output bytes of PROFIBUS Slave is defined (at max 244 bytes).



The screenshot shows a software window titled "Set Communication" with a close button (X) in the top right corner. The window is divided into two main sections: "PROFINET" and "PROFIBUS Slave".

PROFINET Section:

- IP ADDRESS:** Four input fields containing the values 192, 168, 0, and 155.
- SUBNET Mask:** Four input fields containing the values 255, 255, 248, and 0.
- GATEWAY:** A checkbox labeled "GATEWAY" is unchecked. Below it are four input fields containing the values 192, 168, 0, and 1.
- Port:** A single input field containing the value 34964.
- PROFINET Name of Station:** A text input field containing the value "hd67605".

PROFIBUS Slave Section:

- ID Device:** A text input field containing the value 12.
- Baudrate:** A dropdown menu showing "Auto Baudrate".
- Number Byte IN:** A text input field containing the value 244.
- Number Byte Out:** A text input field containing the value 244.

At the bottom of the window, there are two buttons: "OK" (with a green checkmark icon) and "Cancel" (with a red X icon).

Figure 3: "Set Communication" window

PROFINET XML:

By pressing the "**PROFINET XML**" button it is possible to save the GSDML file for the PROFINET side. With this feature you can save the configuration of the converter of the PROFINET side.

PROFIBUS GSD:

By pressing the "**PROFIBUS GSD**" button it is possible to save the GSD file for the PROFIBUS side. With this feature you can save the configuration of the converter of the PROFIBUS side.

**Note:**

When you import the .gsd file on your Master PROFIBUS you have to add all the modules that are present inside it.

UPDATE DEVICE:

By pressing the **"Update Device"** button it is possible to load the created Configuration into the device; and also the Firmware, if is necessary.

If you don't know the actual IP address of the device you have to use this procedure:

- Turn off the Device;
- Put Dip2 of 'Dip-Switch B' at ON position;
- Turn on the device
- Connect the Ethernet cable;
- Insert the IP **"192.168.2.205"**;
- Press the **"Ping"** button, must appear **"Device Found!"**;
- Press the **"Next"** button;
- Select which operations you want to do;
- Press the **"Execute update firmware"** button to start the upload;
- When all the operations are **"OK"** turn off the Device;
- Put Dip2 of 'Dip-Switch B' at OFF position;
- Turn on the device.

At this point the configuration/firmware on the device is correctly updated.

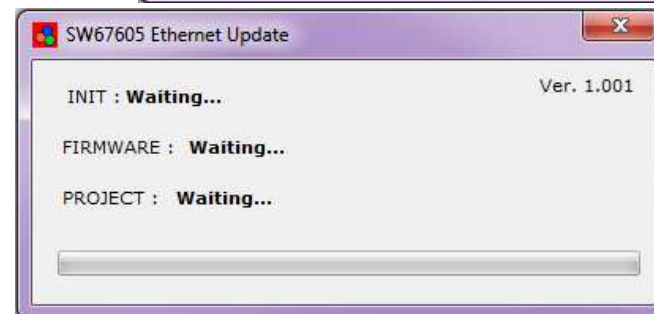
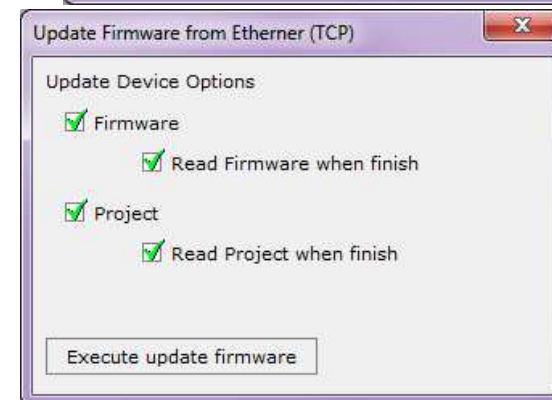
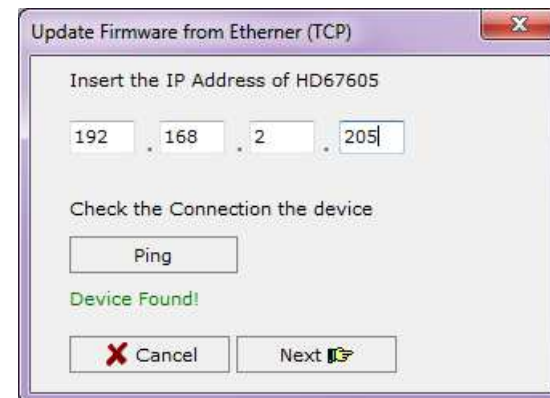


Figure 8: "Update device" windows

If you know the actual IP address of the device you have to use this procedure:

- Turn on the Device with the Ethernet cable inserted;
- Insert the actual IP of the Converter;
- Press the "**Ping**" button, must appear "Device Found!";
- Press the "**Next**" button;
- Select which operations you want to do;
- Press the "**Execute update firmware**" button to start the upload;
- When all the operations are "OK" the device automatically goes at Normal Mode.

At this point the configuration/firmware on the device is correctly update.



Note:

When you install a new version of the software it is better if the first time you do the update of the Firmware in the HD67605-A1 device.



Note:

When you receive the device, for the first time, you have to update also the Firmware in the HD67605-A1 device.



Warning:

If the Fig. 9 appears when you try to do the Update before require assistance try these points:

- Try to repeat the operations for the updating;
- Try with another PC;
- Try to restart the PC;
- If you are using the program inside a Virtual Machine, try to use in the main Operating System;
- If you are using Windows Seven or Vista or 8, make sure that you have the administrator privileges;
- Take attention at Firewall lock;
- Check the LAN settings.



In the case of HD67605-A1 you have to use the software "SW67605": www.adfweb.com/download/filefold/SW67605.zip.



Figure 9: "Protection" window

MECHANICAL DIMENSIONS:

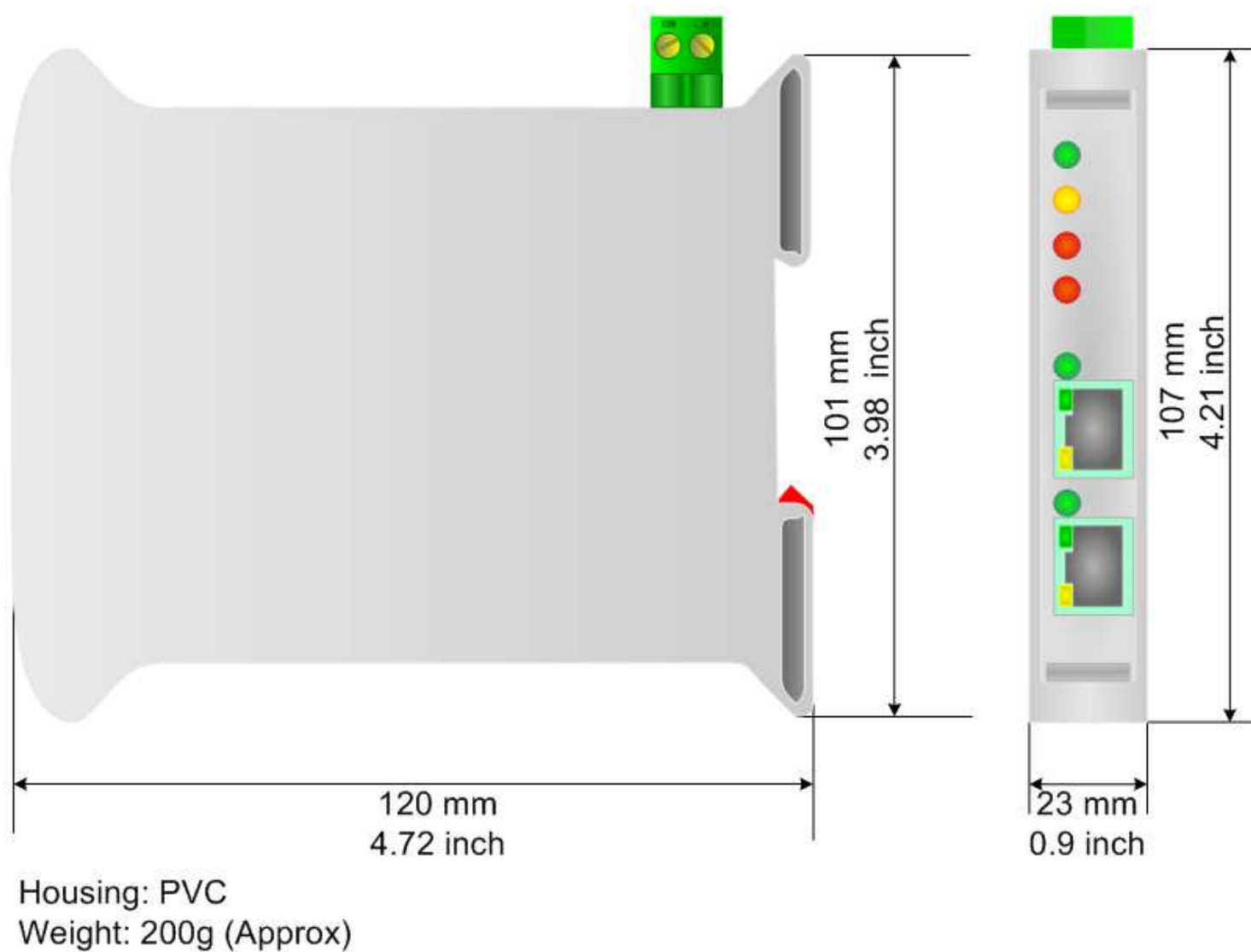
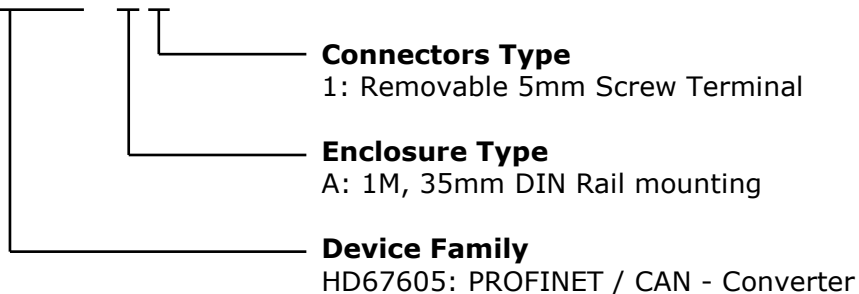


Figure 10: Mechanical dimensions scheme for HD67605-A1

ORDERING INFORMATIONS:

The ordering part number is formed by a valid combination of the following:

HD67605 - A 1

Order Code: **HD67605-A1** - PROFINET / CAN - Converter

ACCESSORIES:

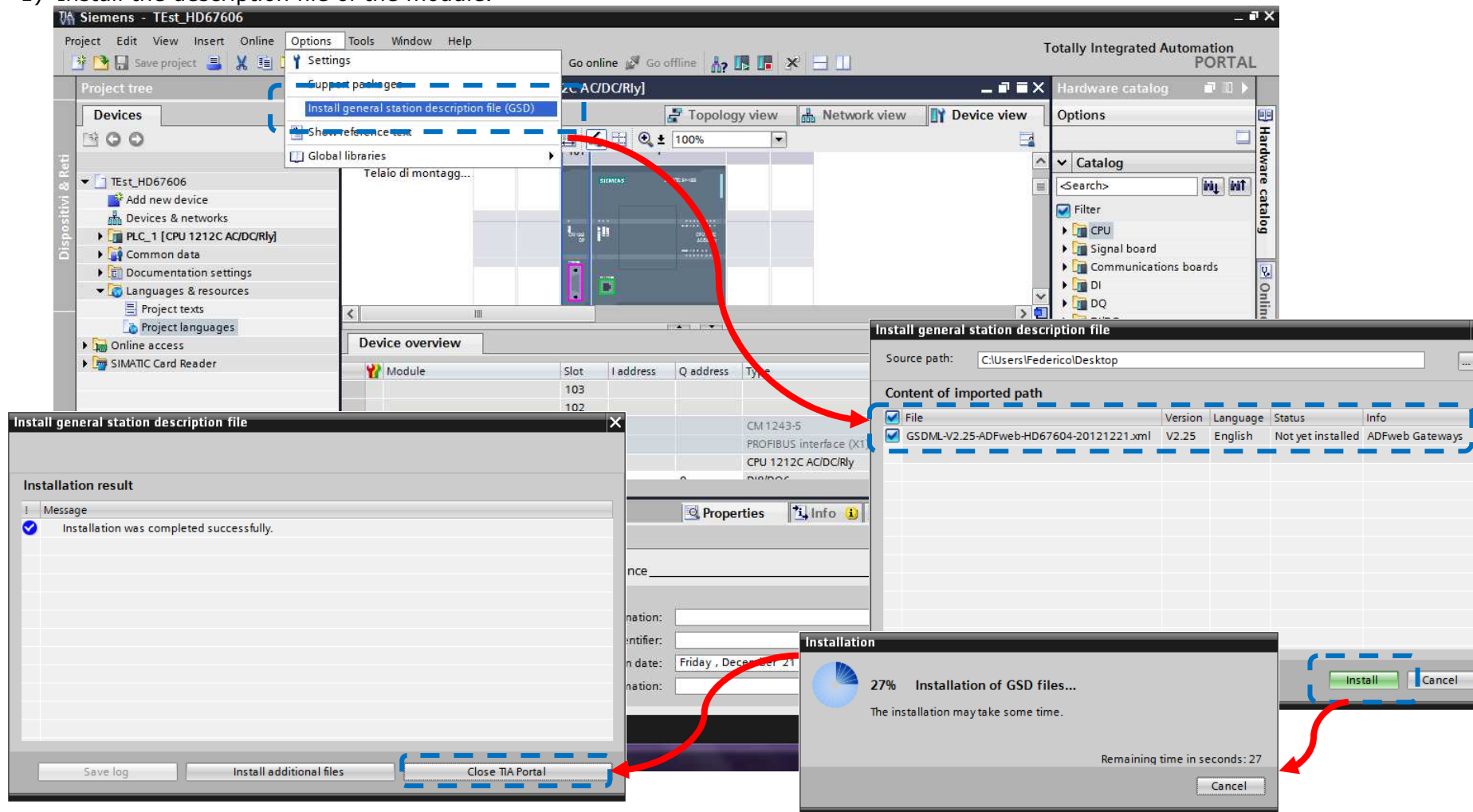
Order Code: **AC34001** - 35mm Rail DIN - Power Supply 220/240V AC 50/60Hz - 12 V AC

Order Code: **AC34002** - 35mm Rail DIN - Power Supply 110V AC 50/60Hz - 12 V AC

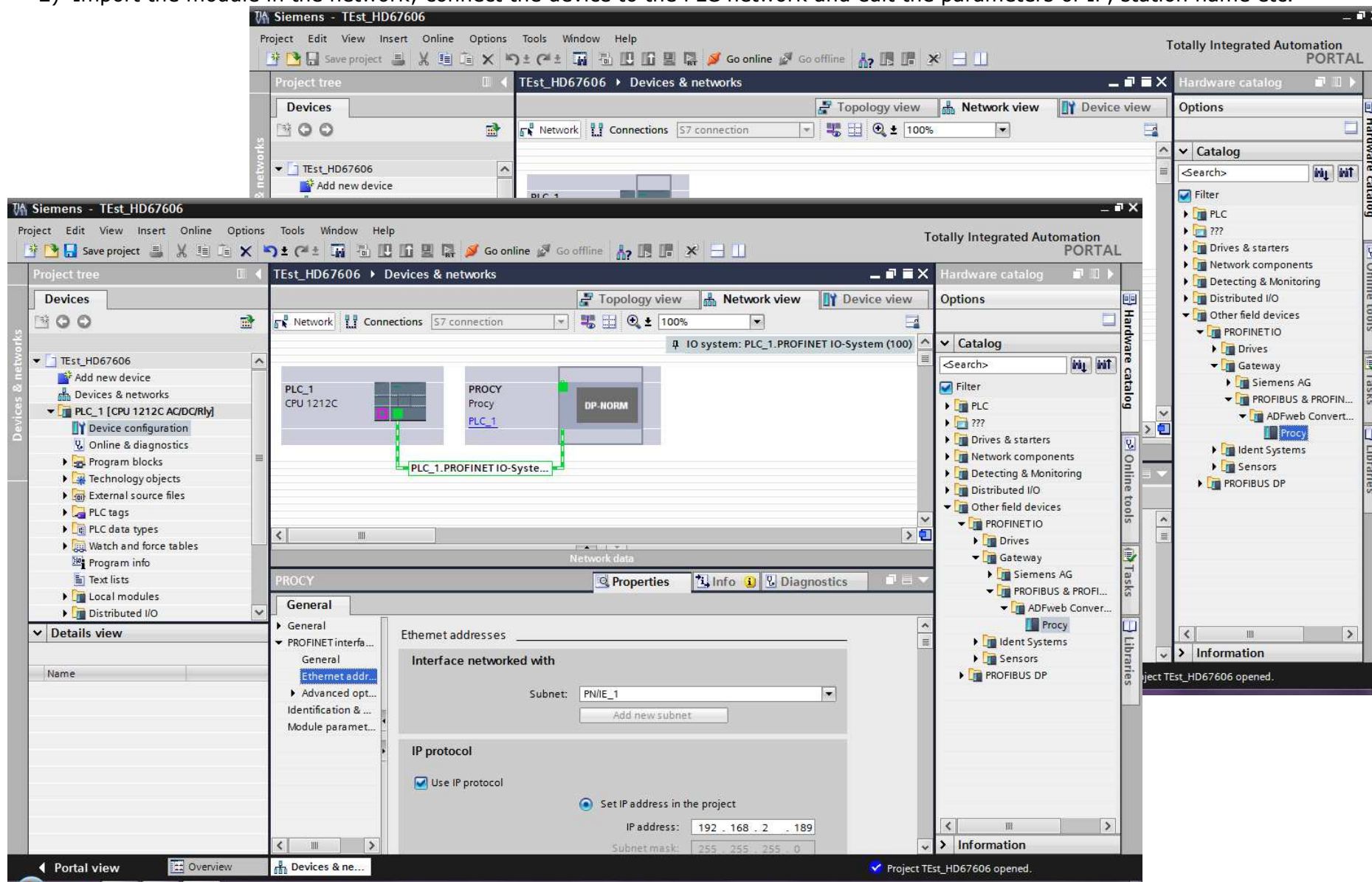
PLC CONFIGURATION:

The configuration and commissioning of the PROFINET Converter as described on the following pages was accomplished with the help of the TIA Portal V11-software of Siemens. In case of using a control system from another supplier please attend to the associated documentation. These are the steps to follow:

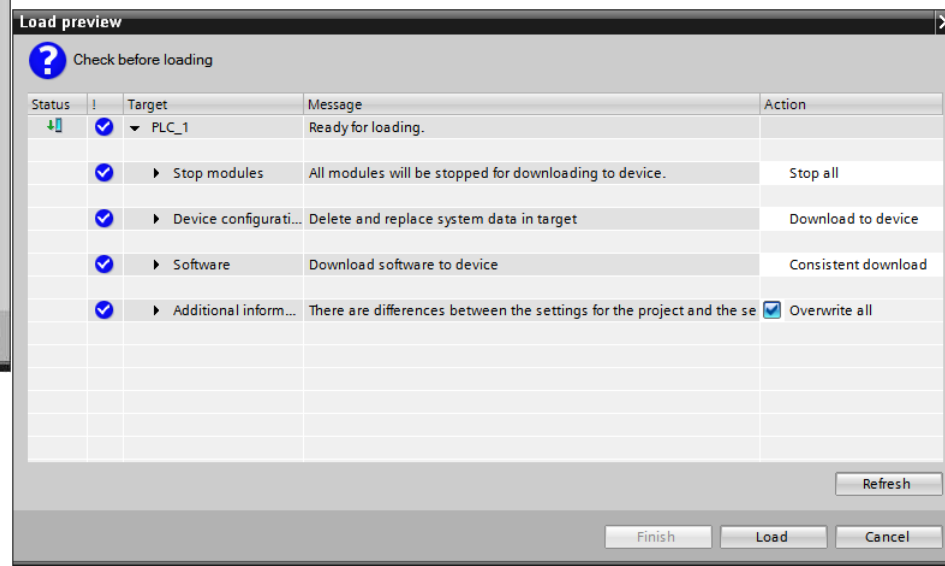
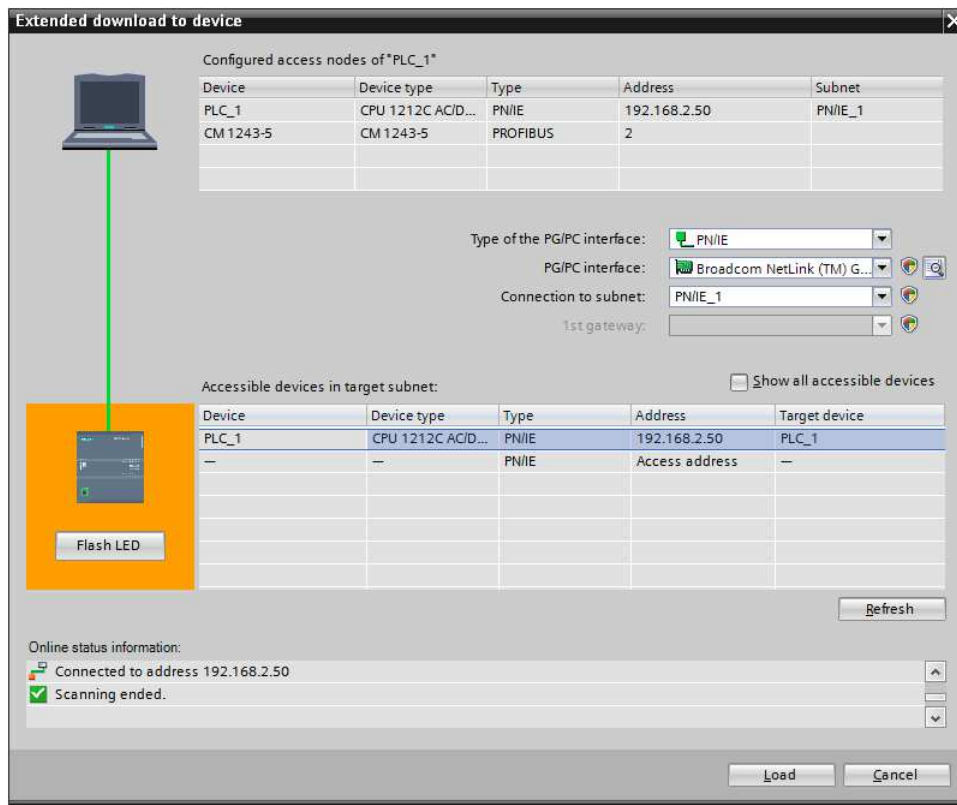
- 1) Install the description file of the module.



2) Import the module in the network; connect the device to the PLC network and edit the parameters of IP, station name etc.



3) Load the configuration into the PLC.



DISCLAIMER

All technical content within this document can be modified without notice. The content of the document content is a recurring audit. For losses due to fire, earthquake, third party access or other accidents, or intentional or accidental abuse, misuse, or use under abnormal conditions repairs are charged to the user. ADFweb.com S.r.l. will not be liable for accidental loss of use or inability to use this product, such as loss of business income. ADFweb.com S.r.l. shall not be liable for consequences of improper use.

OTHER REGULATIONS AND STANDARDS

WEEE INFORMATION



Disposal of old electrical and electronic equipment (as in the European Union and other European countries with separate collection systems).

— This symbol on the product or on its packaging indicates that this product may not be treated as household rubbish. Instead, it should be taken to an applicable collection point for the recycling of electrical and electronic equipment. If the product is disposed correctly, you will help prevent potential negative environmental factors and human health, which could otherwise be caused by inappropriate disposal. The recycling of materials will help to conserve natural resources. For more information about recycling this product, please contact your local city office, your household waste disposal service or the shop where you purchased the product.

RESTRICTION OF HAZARDOUS SUBSTANCES DIRECTIVE



The device respects the 2002/95/EC Directive on the restriction of the use of certain hazardous substances in electrical and electronic equipment (commonly referred to as Restriction of Hazardous Substances Directive or RoHS).

CE MARKING



The product conforms with the essential requirements of the applicable EC directives.

WARRANTIES AND TECHNICAL SUPPORT:

For fast and easy technical support for your ADFweb.com SRL products, consult our internet support at www.adfweb.com. Otherwise contact us at the address support@adfweb.com

RETURN POLICY:

If while using your product you have any problem and you wish to exchange or repair it, please do the following:

- 1) Obtain a Product Return Number (PRN) from our internet support at www.adfweb.com. Together with the request, you need to provide detailed information about the problem.
- 2) Send the product to the address provided with the PRN, having prepaid the shipping costs (shipment costs billed to us will not be accepted).

If the product is within the warranty of twelve months, it will be repaired or exchanged and returned within three weeks. If the product is no longer under warranty, you will receive a repair estimate.

PRODUCTS AND RELATED DOCUMENTS:

Part	Description	URL
HD67120	Converter Ethernet to RS232/RS485	www.adfweb.com?product=HD67120
HD67119	Converter USB 2.0 to RS485 Isolated	www.adfweb.com?product=HD67119
HD67507	Gateway Modbus TCP Server to RTU Master	www.adfweb.com?product=HD67507
HD67510	Gateway Modbus TCP Client to RTU Slave	www.adfweb.com?product=HD67510