

**720P AP Series Network
IP Camera**
(For PC View)

User Manual

Thank you for buying our products

This security camera can offer you the freedom to get your home or business surveillance via network anytime and anywhere, and you do not need any special driver software, just by the Microsoft IE, Safari, Firefox, Google Browser , your iPhone or other cell phone with Android system. It comes with alarm function, when somebody appears on the camera under alarm function, it will take a picture or sound the alarm and email the pictures to you immediately. Now the product has been used in various places, such as warehouse, office, supermarket, and doorkeeper and so on. Get the security surveillance, to enjoy the home or business security and the fun to watch what happened on a trip.

Table of CONTENTS

1. Product Introduction	3
1.1. System Requirements.....	3
1.2. Product Views.....	3
1.2.1 Front View.....	3
1.2.2 Interface View.....	4
1.3. Hardware Installation.....	4
1.4. Software Installation.....	5
2. Software Operation.....	5
2.1. P2P ID Finder Software.....	5
2.1.1. Search The IP address of the Camera.....	6
2.1.2. Preview the camera.....	6
3. Real-Time Video Demonstration.....	7
3.1. Camera Login.....	8
3.2. View via IE Browser.....	8
3.3. View via Safari, Firefox, Google Browser.	12
3.4. Main Menu interface Introduction.....	13
3.5. Administrator Settings Instruction.....	14
3.5.1. Multi-Device Settings.....	14
3.5.2. PTZ Settings.....	15
3.5.3. Basic Network Settings.....	16
3.5.4. Wireless Settings.....	16
3.5.5. Dynamic DNS Settings.....	16
3.5.5.1. DDNS Service Settings.....	16
3.5.5.2. Port Forwarding Settings.....	17
3.5.5.3. DDNS Register.....	20
3.5.6. Email and FTP Service Settings.....	25
3.5.7. Alarm Service Settings.....	26
3.5.8. Local Record Path	26
3.5.9. Record Schedule.....	27
3.5.10. Maintain.....	28
3.5.11. Back.....	28
4. Warranty.....	29

1. Product Introduction

1.1. System Requirements

CPU:	2.06GHZ or above
Memory:	256M or above
Network Card:	10M or above
Display Card:	64M or above
Operating System:	Windows XP/Vista/Windows 7 (32 bit)
Hard Disk Drive:	No Maximum Storage Requirement
Internet Explorer:	Version 5.0 or above
DirectX:	Version 8.0 or above
Audio Card:	PC must have microphone and speaker connected and configured for 2-Way audio play.
Network Protocol:	TCP/IP, UDP, SMTP, PPPoE, Dynamic DNS, DNS Client, SNTP, BOOTP, FTP, SNMP, Wifi (802.11 b/g/n)

1.2. Product Views

1.2.1 Front View



Indoor IP Camera



Outdoor IP Camera

1.2.2 Interface View



Indoor IP Camera



Outdoor IP Camera

1.3 Hardware Installation

Follow the steps below to set up your camera hardware. Make sure to follow each step carefully to ensure that the camera operates properly

1. Install the Wi-Fi antenna (For wireless IP Camera) .
2. Plug the power adaptor into camera
3. Plug the network cable into camera, the other side to the router/switch
4. It takes about 30 seconds to boot up the camera, When the camera was powered on and network cable connected, the green led of the rear panel will keep on, The yellow led will keep flash.



Figure 1.1

1.4 Software Installation




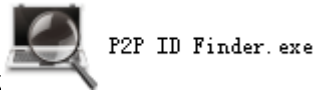
Figure 1.2

Insert the CD to install the following software:

1. Click “OCX setup”—“Next”—“Install”—“Finish”.



2. Click  , Install the IPCame ActiveX (This software is for P2P ID Finder Preview the camera) .




3. P2P ID Finder: click  ,The P2P ID Finder.exe will run automatically. (No need install. You can copy this software to your desktop.)




Figure 1.3

2. Software operation

2.1 P2P ID Finder Software

2.1.1 Search the IP address , P2P ID for the camera.

When the camera has been mounted properly, you double click the Icon  , run this P2P ID Finder software. Search the IP Address,and P2P ID.

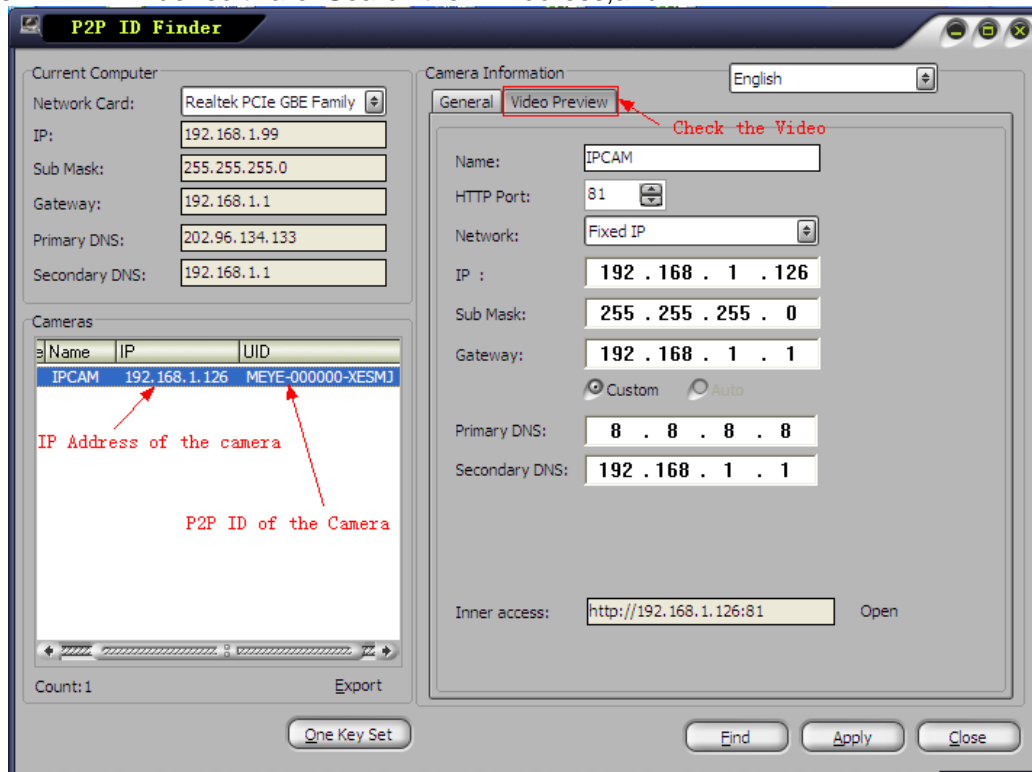


Figure 2.1

Note: The software searches IP Servers automatically over LAN.

There are 2 cases:

1. No IP Cameras found within LAN. After about 1 minute search, the Equipments List Field not show the IP address.
2. IP Cameras have been installed within LAN. All the IP Cameras will be listed and the total number is displayed in the Equipments list field as shown in Figure 2.1

Note:

1. Current Computer indicates the Computer's IP Address information.
2. Equipment information indicates the IP camera's IP Address information.
3. If you find that the camera's "Subnet Mask", "Gateway", "DNS Server" is not as some as your current computer's, (Figure 2.2) . You need try to change the camra's IP address. Make sure the "Subnet Mask", "Gateway", "DNS Server" is the same as your router's or your current computer's.

4. If you don't know how to configure your camera's IP address. You can click "One Key Set" button. The Search Tool software can help you configure a usable IP camera automatically.

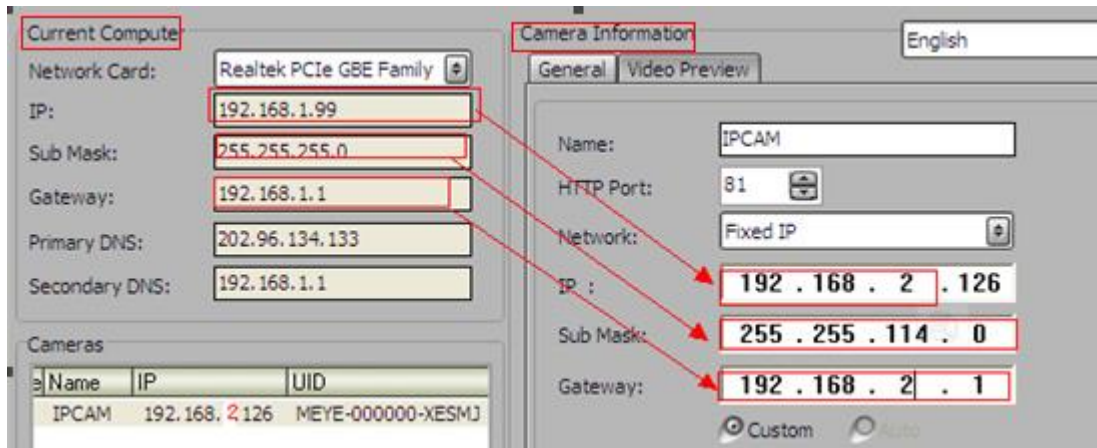

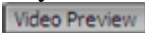


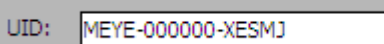
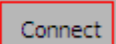
Figure 2.2

2.1.2 Preview the camera.

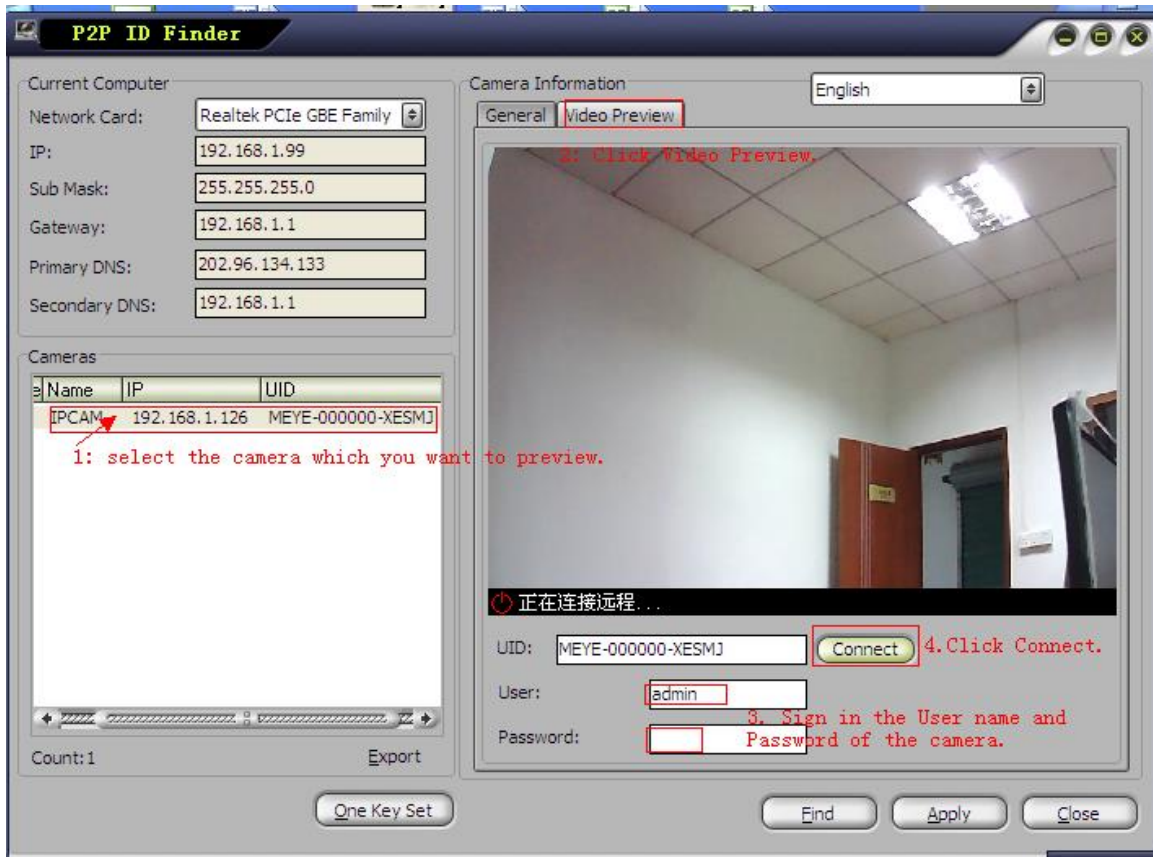
You can preview the camera via the P2P ID Finder software. (Before Preview the camera,

you must install  IPCam ActiveX.exe software.)

- 1) Select the camera which you want to view.
- 2) Click Video Preview. 
- 3) Sign in the user name and password of the camera.

4) Click connect  

Then you can view the camera video now.



3: Real-time Video Demonstration.

3.1. Camera Login:

You can access the camera through **IP Camera Tool** or **IE, Firefox, Safari, Google Chrome or other standard browser** directly.

1. Double click the IP address of the IP Camera listed (Figure 2.1). The default browser you use will run automatically and come to the camera login interface. (Figure 3.1)
2. To access the camera by IE Browser directly, just type the camera's IP address and port , for example, `http://192.168.1.126:81`

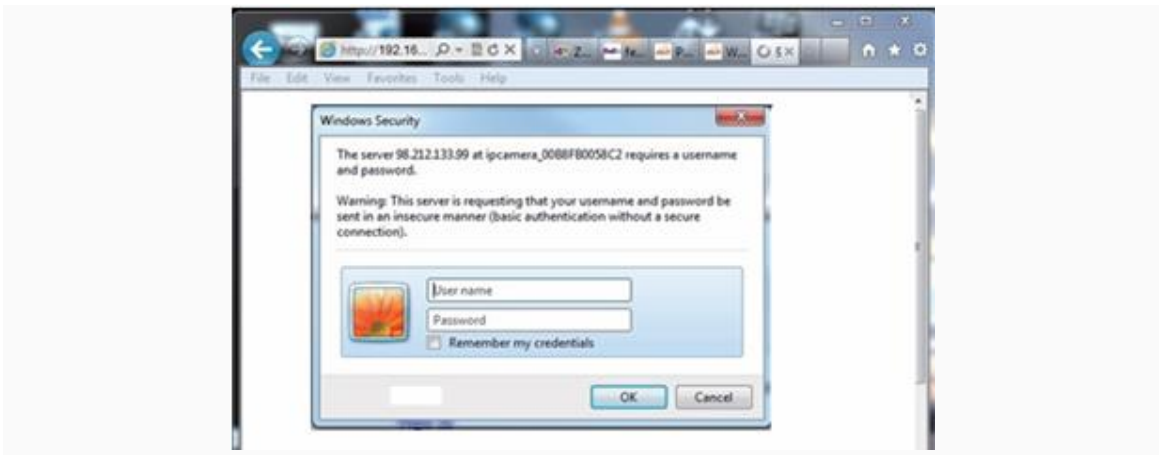


Figure 3.1

Default username: admin
Password: NO PASSWORD.

Input the correct user name and password, the Sign In interface will pop-up. There are three modes to login (figure 3.2).




Figure 3.2

- (1) ActiveX Mode (For IE Browser): available in IE6.0 or above explorer
- (2) "Server Push Mode": available in Firefox, Safari, and Google browser.
- (3) "No Plug-In Mode": available in smart phone browser.

3.2. View via IE Browser.

Choose **ActiveX Mode (For IE Browser)**, and sign in.

The first time you login the camera, you will get ActiveX prompt as the picture below, please

download the Ocx(or run  in CD) to install, then choose Run Add-on, refresh and login the camera again, then you will see live video, details as below:

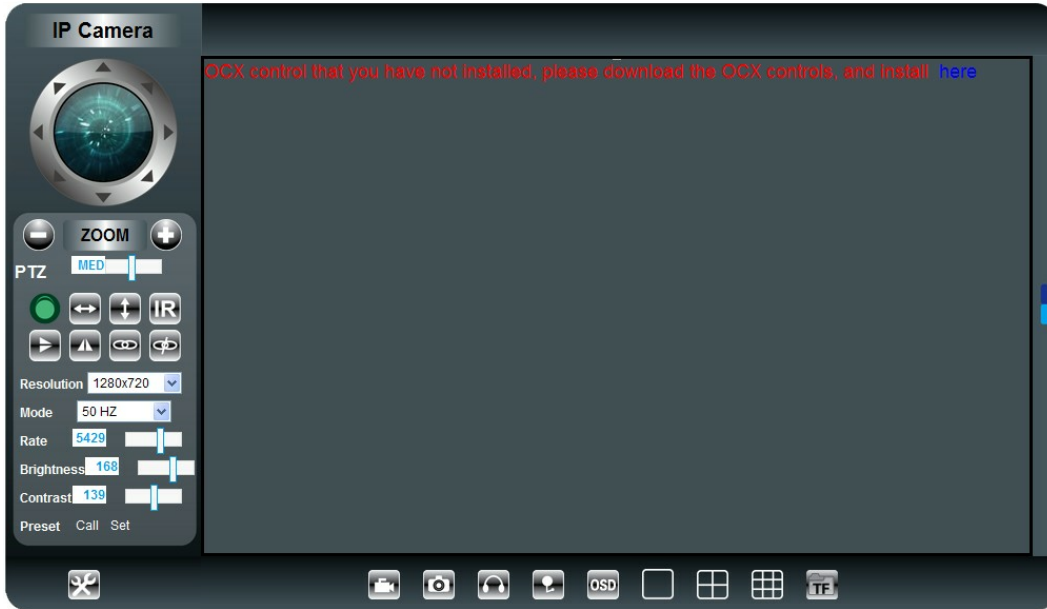


Figure 3.3

After Downloading Ocx-Setup (oPlayer Software), Click and install it.

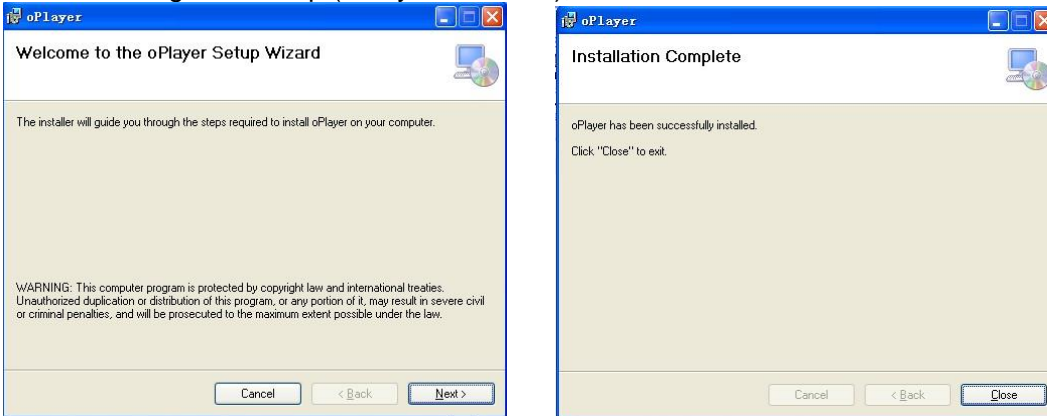


Figure 3.4



Figure 3.3 Windows XP system

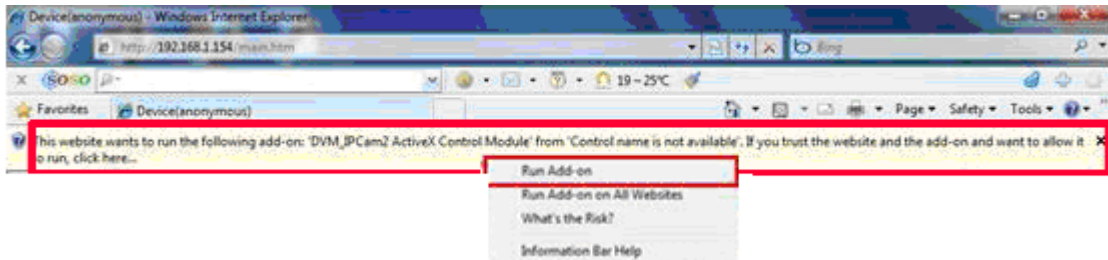


Figure 3.4 Win7 System

Note: If there is still no live video after run ActiveX, please try to enable the ActiveX options of IE security settings, please do the follow steps:

1. Close the firewall of your computer.
2. Change the ActiveX settings, "IE" browser > "Tool" > "Internet Options" > "Security"> "Custom Level" > "ActiveX control and Plug-ins", all the ActiveX options set to be "Enable": Especially:

Enable: Download unsigned ActiveX controls

Enable: Initialize and script ActiveX controls not marked as safe

Enable: Run ActiveX controls and plu-ins

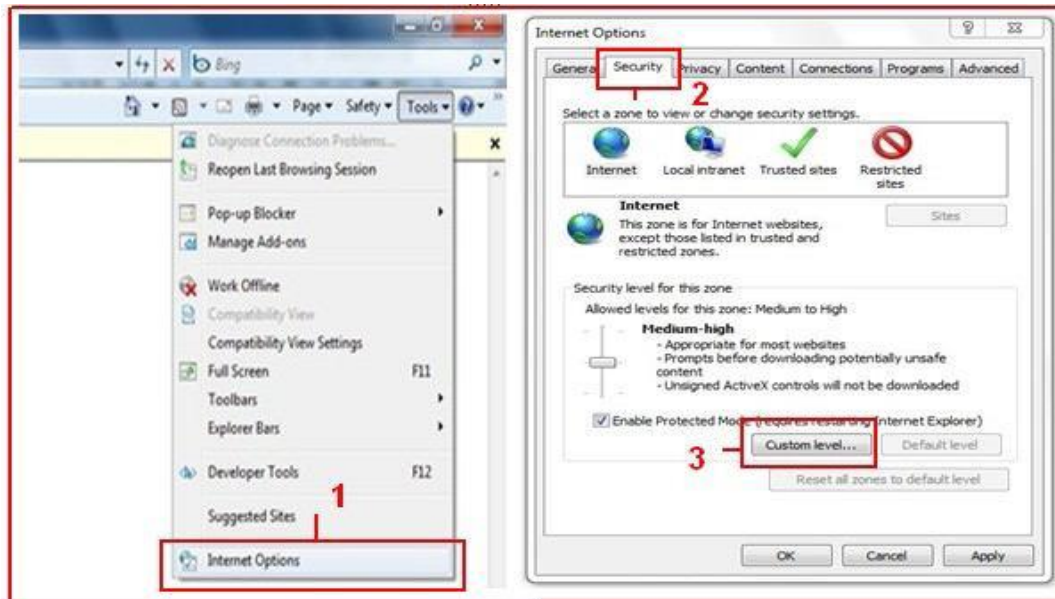


Figure 3.5

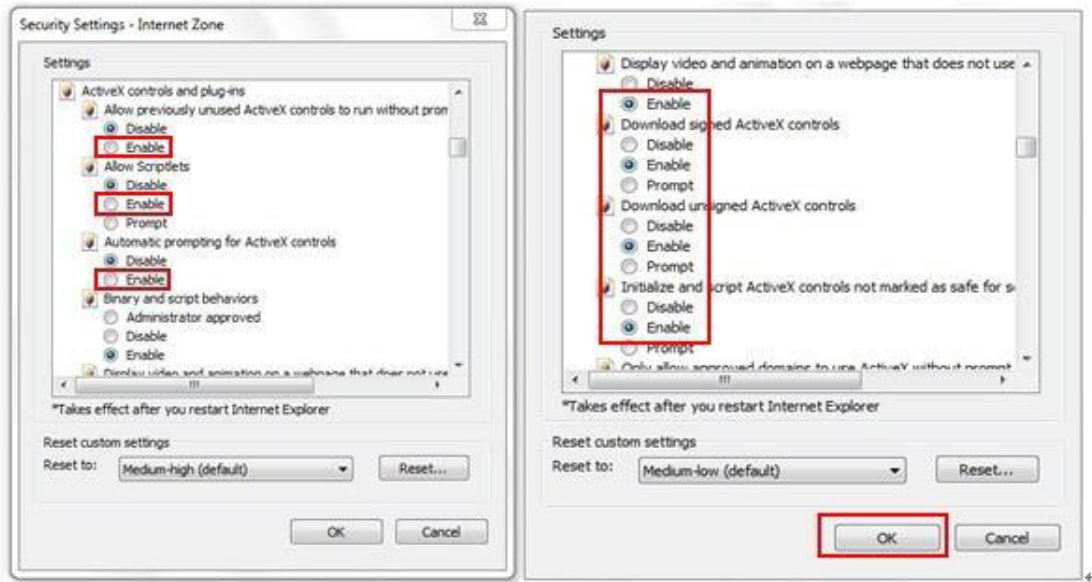
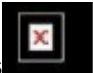



Figure 3.6

In Addition: you can also click “start” menu->“Internet Explorer”, choose “Internet attributes “ to enter, or via “Control Panel” ->“Internet Explorer”, enter to Security setting.

3. If there is still no image, please close your anti-virus software, and then try step 1 & 2 again.

4. If you allowed the Active X running, But still could not see live video, Only a Red

Cross  in the center of the video, And the device status light change to yellow color , not green please change another port number to try, Don't use port 80, use other port such as 99, 199 etc.

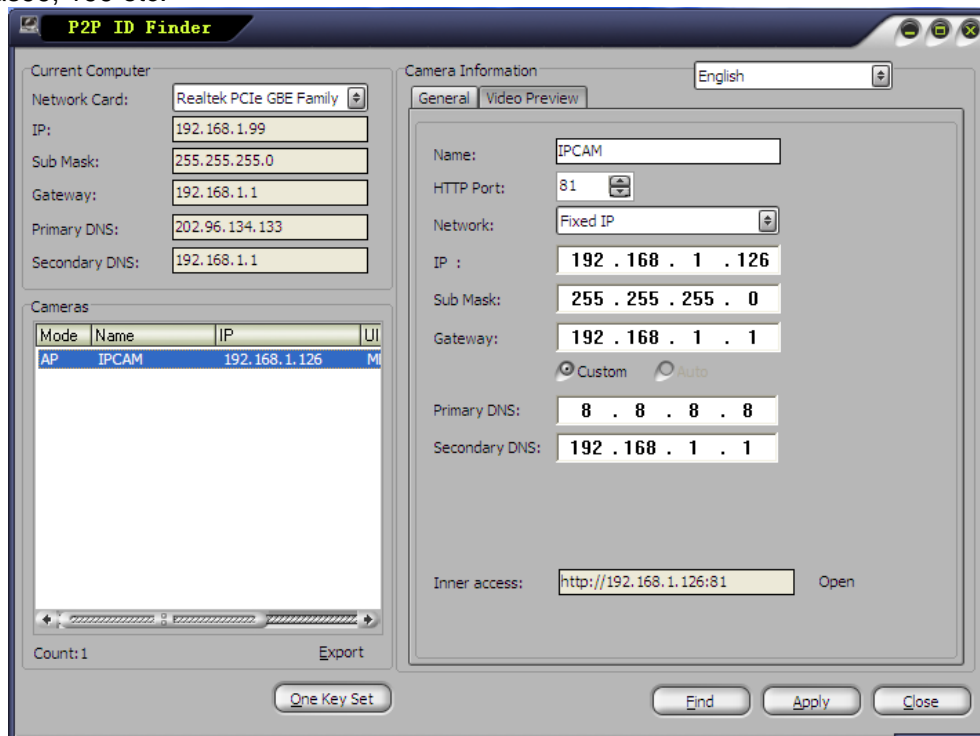
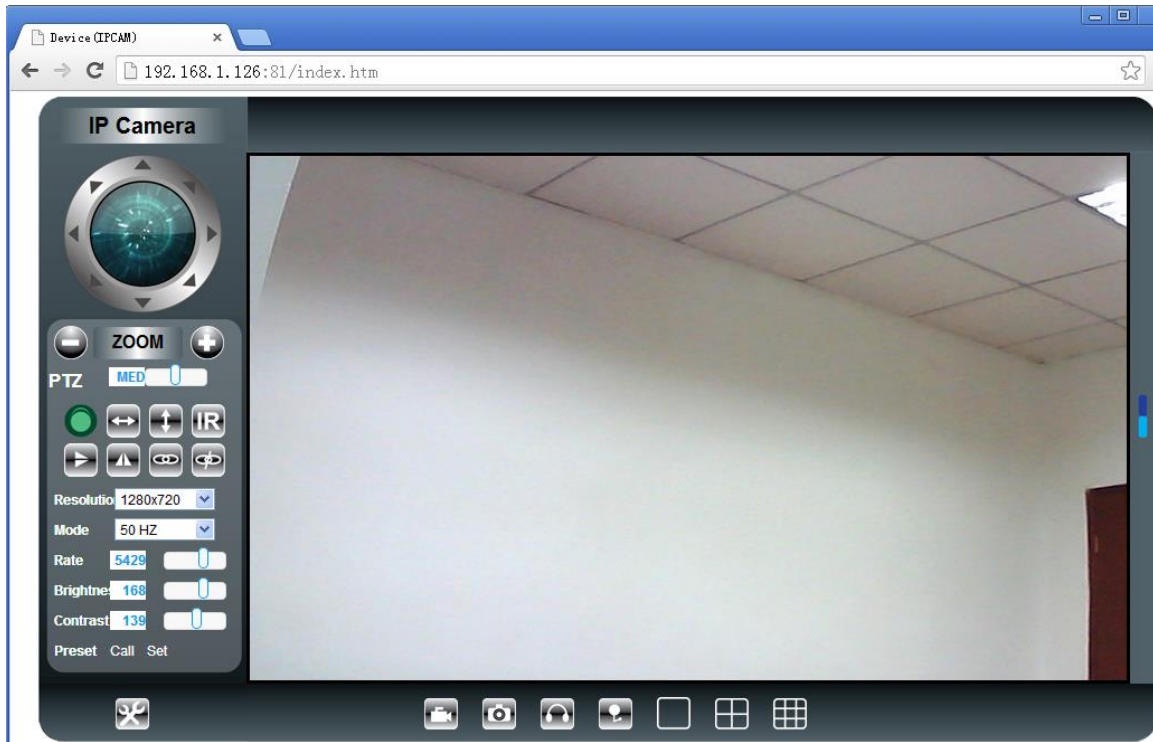


Figure 3.7

NOTE: Make sure that the firewall or anti-virus software doesn't block the software or ActiveX. If you couldn't see live video, please close your firewall or anti-virus software, and try again.

3.3. View via Safari, Firefox, Google Browser

Choose Server Push Mode (For Safari, Firefox, Google Browser), and sign in
Server Push Mode doesn't support ActiveX, **so some functions are not available, such As Record, Audio, Talk, Speaker, Zoom etc.**),if you want to use these functions, please use IE Browser. The Control Interface in this mode is as bellow:



3.4. Main Menu Interface Introduction

Take the "Active Mode(For IE Browser)" for example:

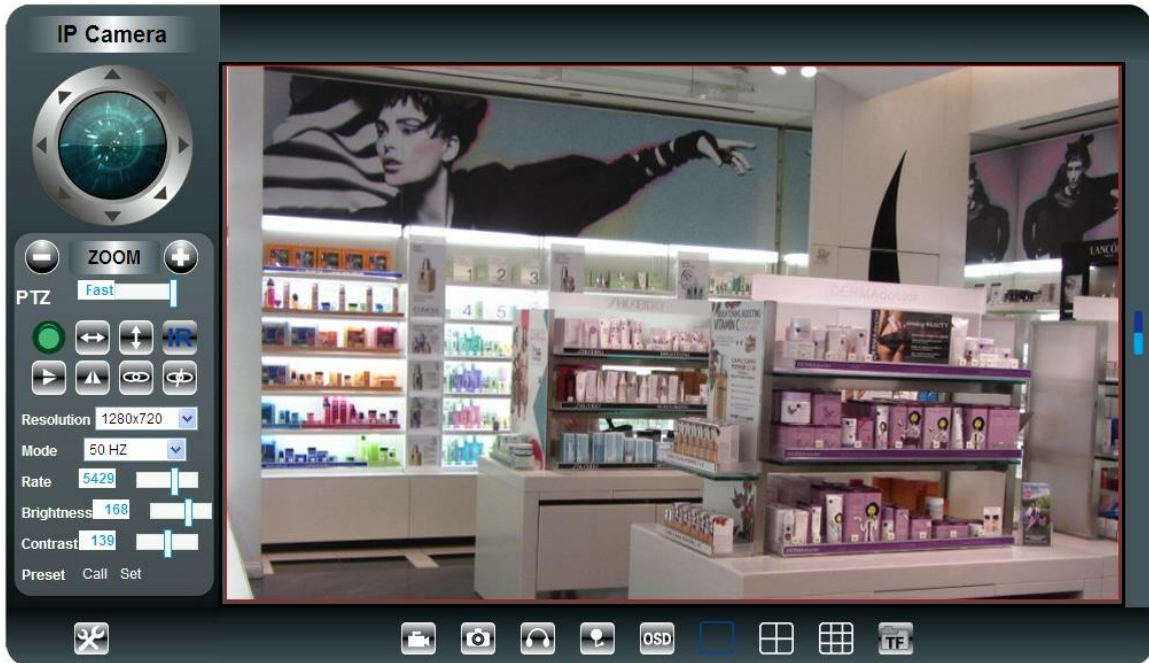


Figure 3.8



Make The Camera Back to The Center
Pan / Tilt

Note: The Pan/Tilt Function only work For Pan/tilt IP Camera



This button enables alarm detections. When alarm the color turn to red.



This button make the camera Vertical cruise (for the Pan/Tilt Cams).



This button make the camera Level cruise (for the Pan/Tilt Cams).



Turn on/off IR leds



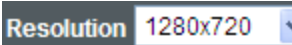
This button flips the image vertically.



This button flips the image horizontally.



This setting changes the image frequency.



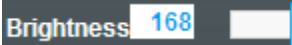
This setting changes the image resolution.



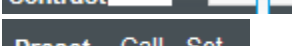
Control the speed of the Pan/tilt.



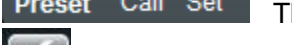
This setting changes the image brightness.



This setting changes the image contrast.



This button for setting the Preset of the camera.



This button opens the IP camera's Backend Menu.



This option opens the camera's recording functionality menu.



This option takes a snapshot of the current screen and saves the snapshot to the PC's Hard Disk.



This option enables Camera-to-User audio. If the online user has speakers connected and configured to their PC, clicking this option will allow them to hear audio from the location of the camera.



This option enables User-to Camera audio. If the online user



Display of time and date.



These options enable single view, quad screen view, or 9 screen view: This function serves no purpose unless you have more than one camera connected and configured to your interface. * Please refer to section 3.5.1 Multi-Device Settings*



This option enables user video playback.

3.5. Administrator Setting Instruction

When login as administrator, you can enter the IP camera to administrate. Administrator supports all the settings and operations of the camera; you can set and control it freely There are some special functions only for administrator as below:

Alias settings : You can name your camera.

Date&Time settings : Setting the date and time.

Users settings : Can be set up to 3 users. On this page you can set up accounts of the user name, password, as well as in their packets (administrator, operator, visitor).

- **Visitor :** In this mode, you can only view the camera page.
- **Operator :** You can control the PT, set the video screen's brightness, contrast and other parameters.
- **Administrator :** You own the highest authority.

Users Settings		
	User	Password
Visitor	<input type="text"/>	<input type="text"/>
Operator	<input type="text"/>	<input type="text"/>
Administrator	admin	<input type="text"/>

3.5.1 Multi-Device Settings

- Add a local area network equipment
In the multi-device configuration page, you can see all the equipment inside the LAN. The first device is the default device. You can add more devices listed in the list of equipment. Embedded applications, up to 4 devices at the same time-line. Click the "second road equipment" and double-click "Current list of devices in the LAN" in the device entry

name, host address, Http port will automatically be filled, require the user to fill in the correct account name and password, click “Add.” Repeat this process you can continue to add devices. Finally do not forget to click on the “Settings” button.

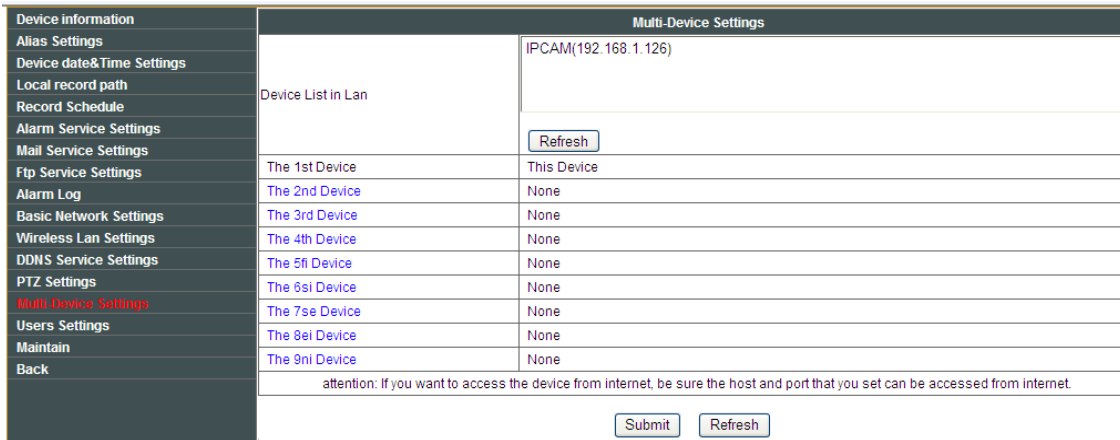


Figure 3.9

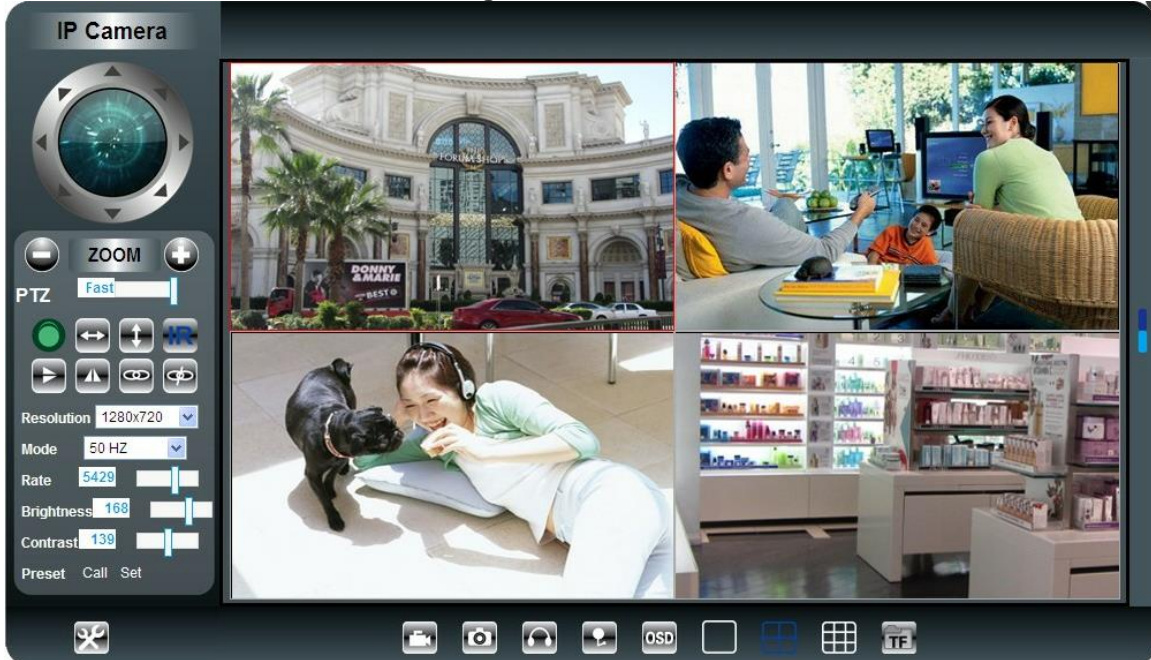


Figure 3.10

3.5.2 PTZ Settings

This sector is for setting the PT function (Pan&Tilt). You can also cancel self-checking function here, but you will also lose presetting bit function. PTZ speed can be adjusted here.

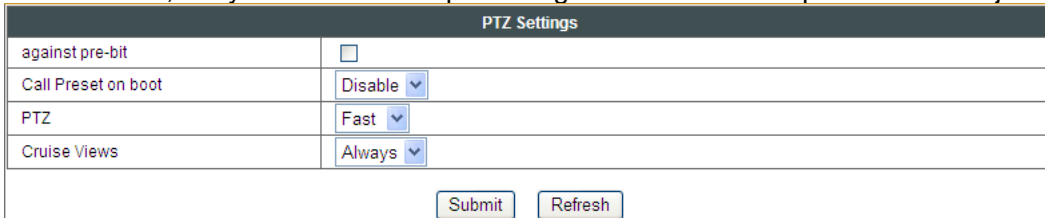


Figure 3.11


3.5.3 Basic Network Settings

Basic Network Settings	
Obtain IP from DHCP Server	<input type="checkbox"/>
IP Addr	192.168.1.126
Subnet Mask	255.255.255.0
Gateway	192.168.1.1
DNS Server1	8.8.8.8
DNS Server2	192.168.1.1
Http Port	81

Figure 3.12

This sector is for DHCP and IP configuration, port forwarding is needed, If you choose to set IP address, please fill in the relative IP address, subnet mask, gateway, DNS server, Http port;

3.5.4 Wireless Settings

1. Make sure the router is a wireless router.
2. Make sure the Wi-Fi antenna installed.
3. Make sure whether there is encryption of the WLAN of the router, if there is encryption, keep the key.
4. Login the camera, click  > “Wireless Lan Settings” > “Scan”, please scan 2times, then you will find the WLAN from the list, choose the one you use.
5. If there is no encryption, just click “Submit”, if there is encryption, please input the key, then click “Submit”.
6. Wait about 30 seconds, the camera will reboot, then unplug the network cable.

Wireless Lan Settings			
Wireless Network List	ID	SSID	MAC
	1	SRCCTV01	A8:15:4D:61:B8:DA
	2	SETUP	D6:BE:7B:E8:DF:45
	3	ChinaNet-rzHW	34:CD:BE:37:8C:20
	4	SRI01	1C:FA:68:C0:38:2A
	5	ChinaNet-xaw9	F8:DF:A8:F0:78:40
<input type="button" value="Scan"/>			
Using Wireless Lan	<input checked="" type="checkbox"/>		
SSID	ChinaNet-rzHW		
Network Type	Infra		
Authentication	WPA2-PSK Personal (AES)		
Share Key			

Figure 3.13

3.5.5 Dynamic DNS Settings (DDNS)

3.5.5.1 DDNS Setting:

- (1): Click  > “DDNS Service Settings”.

DDNS Service Settings	
DDNS Service	DynDns.org(dyndns) ▼
DDNS User	<input type="text"/>
DDNS Password	<input type="text"/>
DDNS Host	<input type="text"/>
DDNS Status	No Action
proxy config is needed if the device is in China Mainland or HongKong	
<input type="button" value="Submit"/> <input type="button" value="Refresh"/>	

Figure 3.14

(2): Choose the DDNS, there are 3 kinds of options:

(1): The camera which you have bought is P2P IP Camera, Normally you didn't need use DDNS setting part. If the P2P function is no stable locally, you can choose to register a local DDNS to support your camera with remoter control. Our camera support DynDns, 3322, 9299 DDNS Server.

DDNS Service Settings	
DDNS Service	DynDns.org(dyndns) ▼
DDNS User	no DynDns.org(dyndns)
DDNS Password	3322.org(dyndns) 9299.org
DDNS Host	<input type="text"/>
DDNS Status	No Action
proxy config is needed if the device is in China Mainland or HongKong	
<input type="button" value="Submit"/> <input type="button" value="Refresh"/>	

Figure 3.15

(2): The Third Party DDNS: This domain is provided by the 3rd party, such as DynDns. Oray, 3322 If you use the third party DDNS, please choose the server you need, such as "3322.org" or "dyndns.org" as below:

DDNS Service Settings	
DDNS Service	DynDns.org(dyndns) ▼
DDNS User	ipcamera
DDNS Password	•••••
DDNS Host	ipcamera.dyndns.org
DDNS Status	No Action
proxy config is needed if the device is in China Mainland or HongKong	
<input type="button" value="Submit"/> <input type="button" value="Refresh"/>	

Figure 3.16

You have to register an account firstly, keep the user, password, host, then fill in it.
Note: Only one DDNS can be chosen.

3.5.5.2 Port forwarding settings:

1: Setting the IP address of the camera

The default IP address of the camera is : [Http://192.168.1.99:99](http://192.168.1.99:99) The default IP address of camera you can change to any other one you like, such as:
 Change to: 192.168.1.109:109. or 192.168.1.99:90 etc.
 Click “Apply”>fill in the user name and password of the camera>click “OK” then the camera will reboot, wait about 30 seconds. You will get your changed IP address.

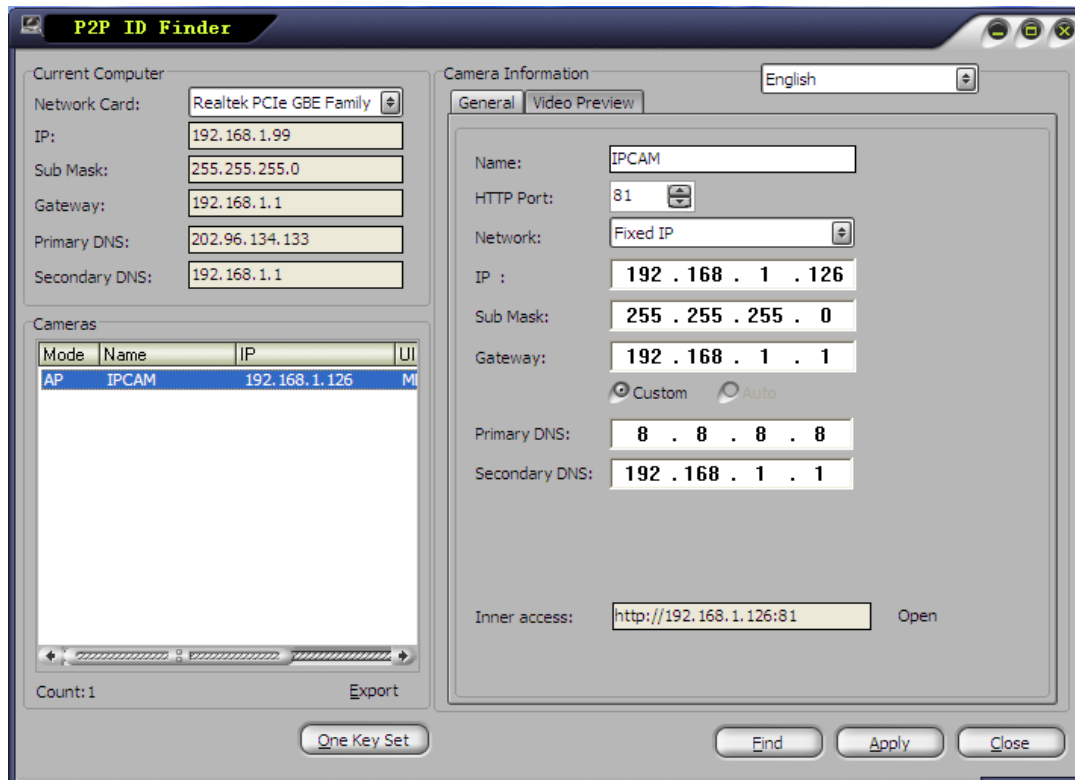


Figure 3.17

Make sure the “Subnet Mask”, “Gateway”, “DNS Server” is the same as your router.

2: Setting Port Forwarding in the router.

This is the most important step. Set port forwarding in router refer to the IP of your camera correctly, then the DDNS will work. Because there are so many kinds of routers from all over the world, so it's difficult to show a fix steps, but there are some samples of different routers' port forwarding settings as below, just for reference:

TP-LINK:

- (1) Login the router.
- (2) Choose “Forwarding”, select “Virtual Servers”



- (3) Click the Add New button, pop-up below:

Add or Modify a Virtual Server Entry

Service Port: (XX-XX or XX)
IP Address:
Protocol: ALL
Status: Enabled
Common Service Port: -Select One-

Fill the service port (except 80), IP address of the camera, then click Save
 The port and IP address should be the same as Camera.

BELKIN:

- (1) Login the router.
 - (2) Choose "Firewall", select "Virtual Servers"
 - (3) Input the port (except 80) and IP address, then click save.
- Note: The port and IP address should be the same as Camera.

BELKIN Router Setup Home | Help | Logout | Internet

LAN Setup
 LAN Settings
 DHCP Client List
 Static Routing

Internet WAN
 Connection Type
 DNS
 MAC Address Cloning

Wireless
 Channel and SSID
 Security
 Wi-Fi Protected Setup
 Guest Access
 Use as Access Point

QoS
 QoS Profiles
 Traffic Statistics

Firewall
 Virtual Servers
 MAC Address Filtering
 Access Control
 DMZ
 DDNS
 WAN Ping Blocking
 Security Log

Utilities
 Restart Router
 Restore Factory Defaults
 Save/Backup Settings
 Restore Previous Settings
 Firmware Update
 System Settings

Firewall > Virtual Servers

This function will allow you to route external (Internet) calls for services such as a web server (port 80), FTP server (Port 21), or other applications through your Router to your internal network. [More Info](#)

Add
 Clear entry

	Enable	Description	Inbound port	Type	Private IP address	Private port
1	<input checked="" type="checkbox"/>	IPCAM	101	BOTH	192.168.2.56	101
2	<input type="checkbox"/>			BOTH	192.168.2.	
3	<input type="checkbox"/>			BOTH	192.168.2.	
4	<input type="checkbox"/>			BOTH	192.168.2.	
5	<input type="checkbox"/>			BOTH	192.168.2.	
6	<input type="checkbox"/>			BOTH	192.168.2.	
7	<input type="checkbox"/>			BOTH	192.168.2.	
8	<input type="checkbox"/>			BOTH	192.168.2.	
9	<input type="checkbox"/>			BOTH	192.168.2.	
10	<input type="checkbox"/>			BOTH	192.168.2.	

Figure 3.18

DLINK:

- (1) Login the router.

- (2) Choose “Advanced”, select “Virtual Servers”
- (3) Input the port, IP address, Protocol, then click save.

Note: The “public port” & “private port” should be the same as camera’s port, choose the protocol to be “both”.

Figure 3.19

After all these 4 steps done, then you can use the DDNS freely, check the DDNS status from the camera as below, and get the link of DDNS for internet view.

Step: “Login”>”>”Device Info”:

Device Status	
Device Firmware Version	28.2.64.121
Device Embedded Web UI Version	13.0.0.01
Alias	IPCAM
Device ID	MEYE-000000-XESMJ
Alarm Status	None
UPnP Status	No Action
DDNS Status	No Action
MAC	00:AF:30:20:82:C9
WIFI MAC	00:af:30:20:82:ca
sd total capacity(M)	0 M
sd remaining capacity(M)	0 M
sd state	sd card is not inserted
Language	English

Figure 3.20

3.5.5.3 DDNS Register

For example, you can go to DynDNS website to register a free account.
<http://www.dyndns.org> / <http://www.dyndns.com>.

Step1: enter <http://www.dyndns.com/> and Create Account

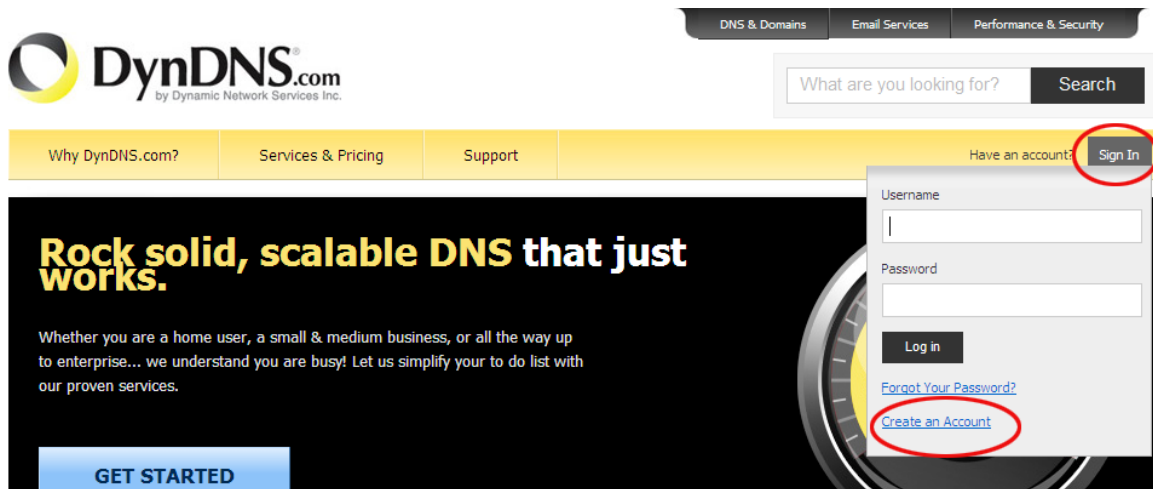


Figure 3.21

Step2: Set the username and password as below:

The image shows the "Create an account or log in to continue" form. The form is divided into two main sections. The left section is for creating a new account, with fields for "Username" (value: kevinzhu), "Password", "Confirm password", "Email" (value: ipcame@qq.com), "Confirm Email" (value: ipcame@qq.com), "Security Image" (value: 73404), "Subscribe to" (checked for "DynDNS.com newsletter (1 or 2 per month)"), and a checkbox for "I agree with the acceptable use policy (AUP) and privacy policy.". The "Create Account" button is circled in red. The right section is for "Already Registered?" users, with fields for "Username" and "Password", a "Log in" button, and a "Forgot your password?" link. A TRUSTe logo is visible in the bottom right corner.

Figure 3.22

Step3: After a minute, you will receive a E-mail from DynDNS Support and it will give you a confirmation address (e.g. <https://www.dyndns.com/confirm/create/ONMzItcCBk6mcHJI5MhVD0g>)

One more step to go...

We've sent an email to ipocame@qq.com, to verify your account. Please check your inbox and click on the confirmation link.

If you do not receive the email in the next few minutes you can try [resending it](#).

Thanks for choosing DynDNS.com!



Figure 3.23

Your DynDNS.com Account 'kevinzhu' has been created. You need to visit the confirmation address below within 48 hours to complete the account creation process:

<https://www.dyndns.com/confirm/create/ONMz1tCBk6mcHJI5MhVD0g>

Our basic service offerings are free, but they are supported by our paid services. See <http://www.dyndns.com/services/> for a full listing of all of our available services.

If you did not sign up for this account, this will be the only

Figure 3.24

Step4: When the Account Confirmed, login and start using your account. Choose Add Host Services(Figure 3.25) and enter Add New Hostname (Figure 3.26)page.

My Services	Billing	Account Settings
 View, modify, purchase, and delete your services.	 Update your billing information, complete a purchase, and view invoices.	 Update your email address, set preferences, and delete your account.
My Zones/Domains	View Shopping Cart	Change Email Address
Add Zone/Domain Services	Active Services	Change Password
My Hosts	Order History	Change Username
Add Host Services	Billing Profile and Vouchers	Contact Manager
Dynamic DNS Pro	Renew Services	Mailing Lists
Dynect SMB	Auto Renew Settings	Move Services
Internet Guide	Sync Expirations	Preferences
SendLabs SMTP		Close Account
SSL Certificates		

Figure 3.25

Hostname: .

Please enter valid hostname label to add new hostname (2-24 characters).

Wildcard: create "*.host.dyndns-yourdomain.com" alias
only for DynDNS Pro users
(for example to use same settings for www.host.dyndns-yourdomain.com)

Service Type: Host with IP address
 WebHop Redirect (URL forwarding service)
 Offline Hostname

IP Address:

[Your current location's IP address is 116.30.138.72](#)

TTL value is 60 seconds. [Edit TTL...](#)

Mail Routing: I have mail server with another name and would like to add MX hostname...

No need to choose

Figure 3.26

Step5: On the Add New Hostname page.

- 1) input your Hostname.
- 2) choose Host with IP address
- 3) click [Use auto detected IP address xxx.xx.xx.xxx](#). Then click Create Host.
- 4) after you have added a New Hostname , you need "Proceed to checkout"

Shopping Cart

[Proceed to checkout >](#)

Upgrade Options

Free accounts allow only two Dynamic DNS hosts.

- to add more and enjoy additional benefits for only \$15.00 per year, [purchase Dynamic DNS Pro](#)
- to get Dynamic DNS for **your own domain**, use [Custom DNS](#).

Dynamic DNS Hosts

kevinsafe.dyndns.org	-	remove	\$0.00
Order Total:			\$0.00

Figure 3.27

Free Services Checkout

Once you have confirmed the contents of your cart your services will be instantly activated.

Service	Period	Price
Dynamic DNS Hosts		
kevinsafe.dyndns.org	-	\$0.00
Sub-Total:		\$0.00

[Activate Services >>](#)

Figure 3.28

Host Services

[↑ My Services](#)

Hostname	Service	Details	Last Updated
kevinsafe.dyndns.org	Host	116.30.138.72	Mar. 23, 2011 10:31 AM

» [Host Update Logs](#) [Add New Host](#)

Figure 3.29

Step6: Now you obtained a Dynamic Domain Name(Figure3.30),and can use it in the DDNS Service Settings(details: 3.5.5)

Notice:

If you have a dynamic IP address, Make sure you have download the DynDNS's "Update Client". And installed it succeed in your computer.

Figure 3.30

3.5.6 E-mail and FTP service Settings

Mail Service Settings	
Sender	ipcame@qq.com
SMTP Server	smtp.qq.com Please select
SMTP Port	25
Need Authentication	<input checked="" type="checkbox"/>
SSL	TLS
SMTP User	ipcame
SMTP Password	●●●●●●●●
Receiver 1	282041236@qq.com
Receiver 2	
Receiver 3	
Receiver 4	
	<input type="button" value="Test"/> Please set at first, and then test.
<input type="button" value="Submit"/> <input type="button" value="Refresh"/>	

Figure 3.31

The above setting is a preparation for the alarm function, the sender should be entered the sender's email address, recipient 1、2、3、4 is filled with recipient E-mail address; SMTP server should be filled with the sender email SMTP server, e.g. the sender email address is abc@163.com, and enter mail.163.com. Generally SMTP port is 25, do no need to change; when needs to check, just tick it, and enter SMTP user and SMTP password, both of them are provided by Email provider, and test according to reference; when needs to send, please tick Email notification Internet IP address; The e-mail server and other information can be obtained from the mail service provider the email notification is image captured when alarming if no email notification is needed when alarming, and then no need to enter.

Set up FTP service, you can fill in parameters like following:

Ftp Service Settings	
FTP Server	50.42.189.68
FTP Port	21
FTP User	ftp.ipcame.com
FTP Password	●●●●●●●●
Upload Interval (Seconds)	1 Empty or 0 means do not upload pictures
	<input type="button" value="Test"/> Please set at first, and then test.
<input type="button" value="Submit"/> <input type="button" value="Refresh"/>	

Figure 3.32

The above setting is equally similar to Mail Server Settings,when alarming is triggered it also sends image,please enter FTP server,FTP port,FTP user,FTP password, FTP upload directory,FTP mode,FTP mode has two options: PORT and POSV. If needs a quick upload image, then select it, edit upload image interval (second)

3.5.7. Alarm Service Settings

As shown below, there are two modes of alarm trigger, first one is motion detection, please refer to below interface, the sensitivity of motion detection can be adjusted according to the users' requirement, the higher the number is, the lower sensitivity is; Another mode is input alarm, when connected, it triggers alarm through alarm input signal which connects to linkage alarm GPIO; When triggered, there are 3 alarm modes: one is IO alarm linkage, camera connects with linkage alarm box through GPIO, sound the siren ; the second is email notification, send email with images captured; the last is upload pictures alarm, as the way mentioned before FTP upload pictures alarm, Upload pictures interval (second) keeps consistent with the mentioned upload pictures interval of Ftp service settings. The schedule refers to arming time, as the selected time interval: 0: 00 minute per week to 0: 45 minutes and Monday 1: 00 hour and 2: 00 hour

Alarm Service Settings	
Motion Detect Armed	<input checked="" type="checkbox"/>
Motion Detect Sensibility	5 <input type="button" value="v"/> The smaller the value, the more sensitive
Alarm Input Armed	<input type="checkbox"/>
Alarm trigger event	
Alarm preset linkage	None <input type="button" value="v"/>
IO Linkage on Alarm	<input type="checkbox"/>
Send Alarm Notification by Mail	<input checked="" type="checkbox"/>
Upload Image on Alarm	<input checked="" type="checkbox"/>
Upload Interval (Seconds)	<input style="border: 1px solid red;" type="text" value="2"/>
Alarm Arming Time	
Scheduler	<input checked="" type="checkbox"/>
select all	<input checked="" type="checkbox"/>
Day	0 1 2 3 4 5 6 7 8 9 10 11 12 13 14 15 16 17 18 19 20 21 22 23
Sun	
Mon	
Tue	
Wed	
Thu	
Fri	
Sat	

Figure3.33

3.5.8 Local Record Path

This sector is for Record&Capture Path in your computer. It include: Record&Capture Path, Record file length(MB), Record time length(Minute), Reserved disk space(MB), Record cover.

Local record path	
Local record path	C:\ <input type="button" value="select..."/>
Record file length(MB)	100 <small>Least 100MB , MAX 1000MB</small>
Record time length(Minute)	5 <small>Least 5 Minutes , MAX 120 Minutes</small>
Reserved disk space(MB)	200 <small>Least 200MB</small>
Record cover	<input type="checkbox"/>

Figure 3.34

3.5.9 Record Schedule

This sector is for **SD card recording settings**. When the SD card has been inserted, it will show the capacity of the card. At first, you need to format it. It include: Record coverage ,Record time, Timer recording. The settings are like following:

Record Schedule	
sd total capacity(M)	0 M
sd remaining capacity(M)	0 M
sd state	sd card is not inserted <input type="button" value="Format"/>
Record coverage	<input checked="" type="checkbox"/>
Record time(minute)	15 <small>Recording time range: 5~180 minutes</small>
Timer recording	<input checked="" type="checkbox"/>
select all	<input checked="" type="checkbox"/>
Day	0 1 2 3 4 5 6 7 8 9 10 11 12 13 14 15 16 17 18 19 20 21 22 23
Sun	
Mon	
Tue	
Wed	
Thu	
Fri	
Sat	

Figure 3.35



You can playback the video online. Click “TF” button, choose the last sign in mode.

You will see:



Figure 3.36

3.5.10 Maintain

This sector is for maintaining your camera. Restore factory settings, Reboot device, Upgrading. **Pay attention: It is risky to upgrade your camera.**

Upgrade Device Firmware			
Restore Factory Settings	<input type="button" value="Restore Factory Settings"/>		
Reboot Device	<input type="button" value="Reboot Device"/>		
Upgrade Device Firmware	<input type="text"/>	<input type="button" value="Browse"/>	<input type="button" value="Upgrade"/>
Upgrade Device Embedded Web UI	<input type="text"/>	<input type="button" value="Browse"/>	<input type="button" value="Upgrade"/>

Figure 3.37

3.5.11 Back

After all the settings, click here to go back to camera interface.

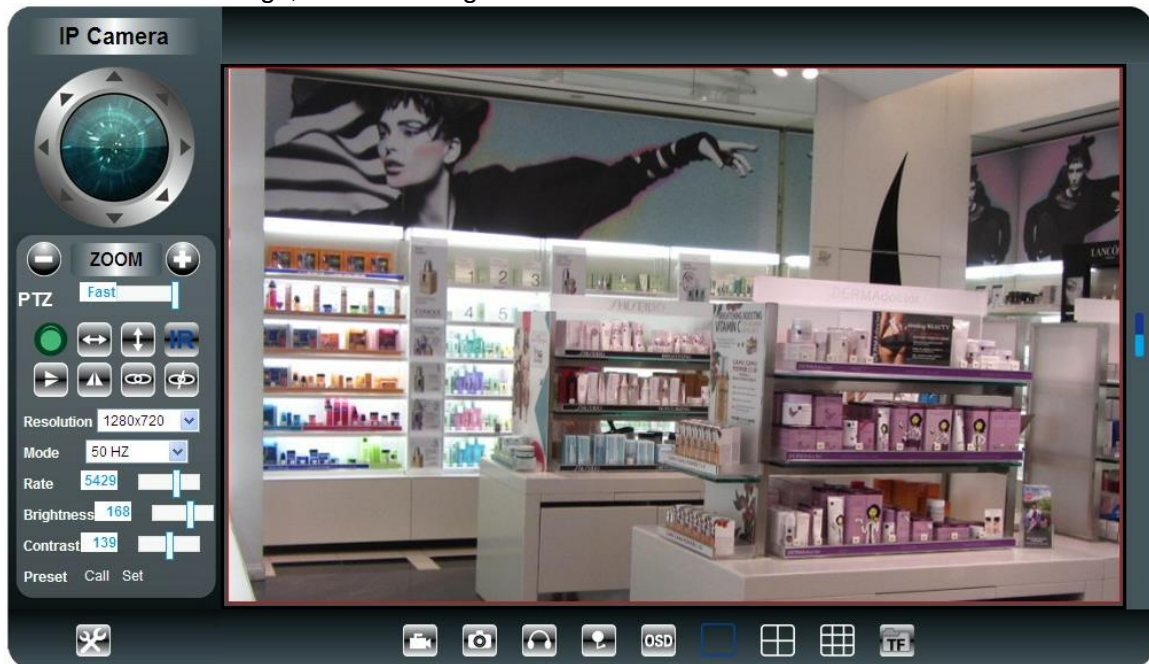


Figure 3.38

4 Warranty

Under normal use condition, products resulting from its own failures in the warranty period will be free maintenance. Warranty Terms as following:

1) Charge-free maintenance of the product is one year. We can repair it for free during the guarantee period (Damages not caused by misuse or vandalism). Repair over guarantee period, we will charge maintenance fee.

2) During guarantee period, breakdown caused by misuse or other reasons out of range of warranty. You could ask repair depend on the card. We only charge for changed components, the maintenance charge is free.

3) When the products need maintenance, hand up the card with products to the manufacture or local distributor.

4) Take apart item crust, tear up the sealing label privately, this is out of warranty range.

5) We do not accept the damaged item due to modification or add other functions.

The Following Circumstances will not be free warranty

6) Period check, maintenance or change components due to normal attrition.

7) The damages due to crash, extrusion, artificial flooding, moisture or other personal reasons.

8) The damages due to floods, fire, lightning strike and other natural calamities or force majeure incidents factors

9) Repaired item by non-authorized repair centers. All above terms, if changed, regarded to relevant regulations.

THAT'S ALL, THANK YOU!