

Agility Data Radio (ADR)

User Manual



April 2011

Revision D.2



Quick Start Procedure

Note: Prior to starting the installation process, go to the KTS Wireless website (ktswireless.com) and download a copy of the ADR Element Management System (EMS) software. Store this software on your PCs Desktop.

Follow the steps below to install and configure Agility Data Radio (ADR):

1. Select the location for the ADR. Must be an area free of water intrusion with a temperature range of -30 to +55 deg C (-22 to 130 deg F). It is always best to use one of the mounting options shown below to provide good 'heatsinking' of the ADR case to a large metal surface. This will reduce the operating temperature of the ADR and surrounding equipment within the same enclosure.



L-DIN



Flat-DIN



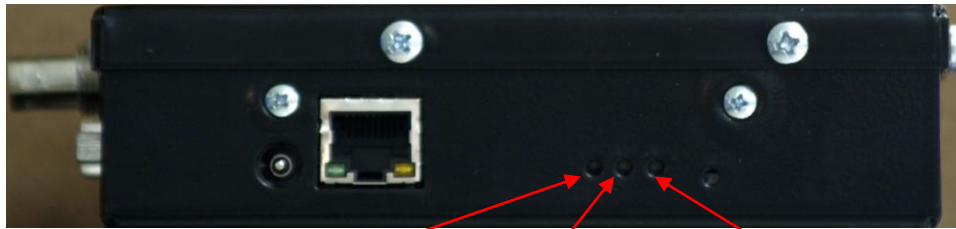
Wall (with optional Fan)

See the KTS website for ordering information. Correct mounting is critical to maximizing ADR performance and reliability.

2. Locate the coaxial cable to the antenna. This should be a good quality, low-loss cable that is as short as possible. This cable should include an in-line surge arrestor to prevent lightning strike damage to the radio. The cable should have a BNC (F) connector or an adapter will be needed. See the KTS Wireless website for ordering information, if one is needed.
3. Locate the power source. The ADR requires a 9-14 VDC input and draws about 1.5 A (when transmitting). Power is supplied via the 2.5 mm connector on the side of the unit

(See Figure 1). A power cable pigtail is available (ordered separately) and can be used to connect the ADR to an existing power supply. Alternately, a separate power supply with the proper 2.5mm connector can be purchased directly from the supplier or from KTS Wireless. See [the website for ordering information](#).

4. Connect the power supply cable to the ADR and turn on. Observe that the green power LED is illuminated. It takes about 7-10 seconds for the ADR to boot-up. After this, only the green power LED should be on.



TX/RX RF Activity
(Blinks amber for TX and Grn for RX)

Summary Fault
(Red for fault)

Power
(Grn when Power on)

5. Connect a laptop to the ADR as shown in the Figure 2. Double-click on the icon below to start the EMS software.



ADR_2.3.4.jar

6. The Main screen will appear (See Figure 3). Enter a valid password and click on Login. The IP Tab will open if a valid password is entered. [Contact KTS Wireless to obtain your password](#). **Section 4.0 of this manual contains the details of using the ADR Element Management System (EMS)**. Jump to Section 4.0 for details on setting up the EMS and resetting the ADR IP addresses (i.e., changing from the default value).
7. **The default IP address of the ADR is 192.168.1.4.** This address is automatically loaded in the Connect to field at the top. Click on the GET button at the bottom if this default address is still loaded in the ADR and not been changed. **Note: Pressing and holding the recessed Reset button (See Figure 1) for at least 12 seconds will force the radio back to its default settings. The default radio IP address is 192.168.1.4.**

8. Open the Configuration Tab. Select the Link Configuration from the pull-down menu. Enter the desired Frequency in Hz (with or without commas separators). Make sure the desired frequency is supported by the RF Card installed in the ADR. The following ranges are supported:

<u>RF Card Band</u>	<u>Frequency Range (Hz)</u>
1	145,000,000 to 225,000,000
2	210,000,000 to 470,000,000
3	470,000,000 to 930,000,000

The ADR configuration printed label (on the bottom side) indicates the RF Band supported. Verification of the Radio band can be found on the SW/HW tab (RF Band is displayed in the upper right of the tab).

9. Set the Transmit Power level. Valid entries are 17 to 32 (dBm).
10. Enter the Radio Type (Remote or Hub).
11. Enter the Site Name (optional). This is a convenient name for the location or site and can be used by operation staff for identification. Its value does not affect radio operation. Up to 15 characters can be entered. This name is used by the optional Network Performance Software (NPM) to display the status of sites and send alerts. **It is recommended that a unique name be given to each site.**
12. Click on SET to make the desired Configuration changes within the ADR. The ADR will automatically reset and begin using the new configuration information. Allow about 7-10 seconds for this process to complete. And then press the Get button to verify the new information is stored within the ADR. This information will be saved permanently within the ADR until changed in the future and will not be lost if the ADR loses power.
13. If the serial port is used, open the Serial Port tab. **Note: Selection of Link Configurations 1 - 3 preset default serial port parameters.** These defaults can be changed from this tab. Select the desired baud rate from the pull down menu (1200 to 38400 bits per second). This value should normally be less than the over-the-air data rate indicated in the Link Configuration field. Select the desired character length, parity and number of Stop bits from the pull-down menus. The receive (from user device) and transmit (from the ADR) data can also be inverted by the ADR by checking the

associated Data Invert boxes. The serial port configuration is ignored for Link Configurations 4 – 9.

14. The serial port uses a transparent mode of operation when Link Configurations 1-2 are selected. It operates as follows:

- When user data is detected on the serial port, the ADR collects all bits received into a packet
- When the port goes idle for 3 character times, the packet is transmitted over the wireless link

This feature allows the ADR to be transparent to the serial port protocol and uses data port activity to determine when to transmit. **This mode will support most serial port SCADA protocols**

15. Click on SET to make the desired Serial Port changes within the Radio.

16. The ADR should now be configured and ready for installation and operation.

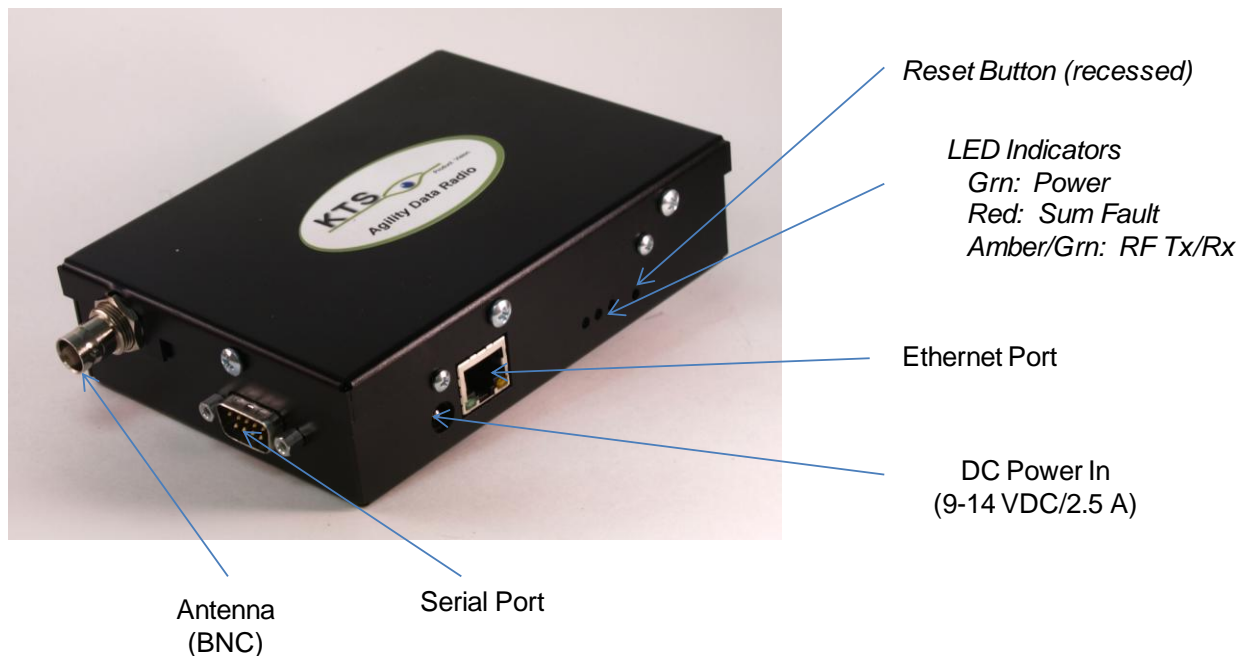


Figure 1: ADR Connections

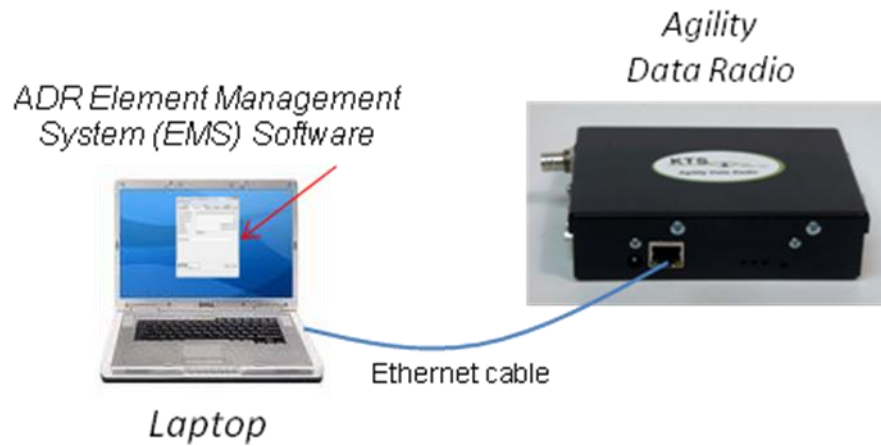


Figure 2: ADR/EMS Connection

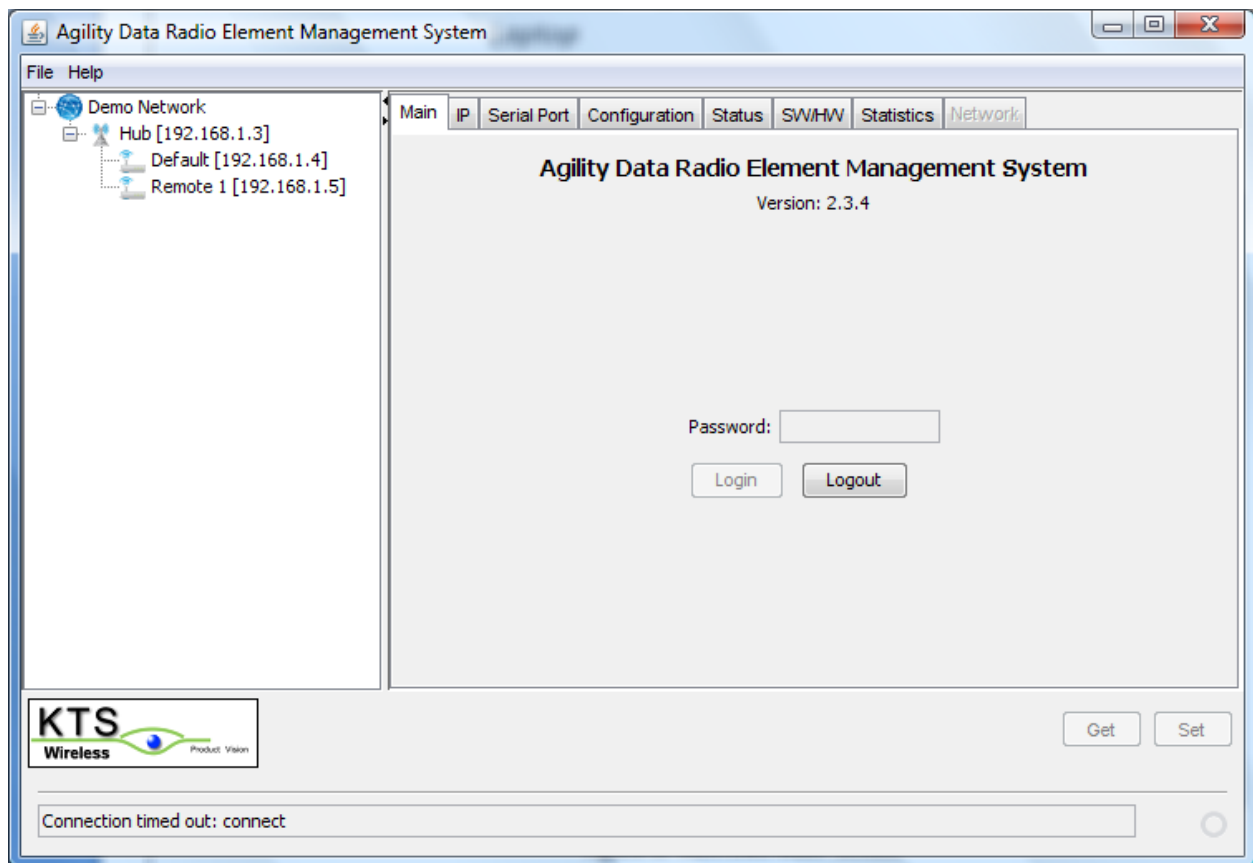


Figure 3: EMS Login Screen

Contents

1.0 Product Description	9
2.0 Applications	12
3.0 Specifications	14
4.0 ADR Element Management System	16
5.0 Upgrading Software	29

Copyright Notice

Copyright 2011, KTS Wireless, Inc, All rights reserved

Operational and Safety Notices



RF Exposure

The radio described in this manual transmits RF energy. The concentrated energy from the antenna may pose a health hazard. All antennas used with this radio must be installed to provide a minimum separation from all persons of 90 cm (36 inches). The above separation distance must be maintained at all times. More information can be obtained from the FCC at the following website:

http://www.fcc.gov/Bureaus/Engineering_Technology/Documents/bulletins/oet65/oet65.pdf



FCC Part 15 Notice

The transceiver complies with Part 15 of the FCC Rules. Operation is subject to the following two conditions: (1) this device may not cause harmful interference, and (2) this device must accept any interference received, including interference that may cause undesired operation. This device is specifically designed to be used under Section 15.247 of the FCC Rules and Regulations.

Any unauthorized modification or changes to this device without the express approval of KTS Wireless may void the user's authority to operate this device. Furthermore, this device is indented to be used only when installed in accordance with the instructions outlined in this

manual. Failure to comply with these instructions may also void the user's authority to operate this device.

1.0 Product Description

The Agility Data Radio (ADR) shown in Figure 1.1 below is design to provide a reliable wireless connection for digital communication in selected bands in the 145 and 930 MHz frequency bands.



Figure 1.1: Agility Data Radio (ADR)

The ADR is a software-defined radio (SDR) making it very flexible and upgradable. The modem functionality is comprised of software which is loaded at the time of manufacturing. It can be upgraded in the future to add additional features.

The unit is housed in an aluminum enclosure which is not weather-tight. Two printed circuit boards are included; RF and Digital. The RF board is provided in one of three configurations as outlined below:

Low Band (1): 145 to 225 MHz

Middle Band (2): 210 to 470 MHz

High Band (3): 470 to 930 MHz

These RF cards all provide a common differential baseband I/Q interface to the Digital board. The RF board includes transmit, receive, synthesizer and control sections. The transmit section includes an Intermediate Power Amplifier (IPA), Power Amplifier (PA), Variable Attenuator and Forward and Reverse Power Detectors. The PA provides nearly 2 Watts (32 dBm) of RF output power at the antenna connector. The Variable Attenuator is used by the Control system processor to set and maintain the transmitted RF power level. A closed-loop process is used with the Forward Power Detector to maintain the desired output level under all conditions. The Reverse Power Detector is used to detect impedance mismatches which may occur with an antenna or cable failure.

The receive section of the RF board includes a Tunable Bandpass Filter (TBPF), Low Noise Amplifier (LNA) and Variable Attenuator. The TBPF is centered by the control processor about the radio's operating frequency and has a 20 MHz passband. The LNA provides gain and a noise figure of about 4 dB. An Automatic Gain Control (AGC) loop is managed by the control processor using the Variable Attenuator. A constant level is maintained into the Digital board.

The synthesizer section includes a 20 MHz Frequency Reference which is a Temperature-Compensated Crystal Oscillator (TCXO) with Stratum 3 frequency stability. This reference is multiplied up to the desired operating frequency within the Synthesizer. The output is applied to the Digital Up and Downconverters. This provides direct modulation and demodulation of the baseband, modulated signal.

The control section includes a processor with on-board memory, analog to digital converters and general purpose I/O. It also includes a serial port which is used to communicate with the processor on the Digital board. The processor manages the transmit power control and receive AGC loops. It also programs the synthesizer to tune to the operating frequency. The memory contains the processor code along with critical calibration tables which are generated during manufacturing. These tables provide accurate transmit power setting across the band, receive power estimation and tunable filter control.

The Digital board provides the user ports, message routing and radio management functions. The radio provides a serial and Ethernet ports for connection to user devices. The use of certain ports is determined by the Link Configuration (See Table 1). The ADR supports an RS-232 interface. The pin-out is shown in Table 2 below.

Link Configuration	Port Used
1-3	Serial
4-9	Ethernet

Table 1: Active User Ports

Pin	Function
2	Transmit Data (from user)
3	Receive Data (to user)
5,6	Ground
7	Clear to Send (CTS)
8	Request to Send (RTS)
1,4,9	Not Used

Table 2: DB9 Signals for RS232 Serial Port

2.0 Applications

The most common application for the ADR is a 'star' network where a single hub site communicates to a collection of remote sites as shown in Figure 2.1.

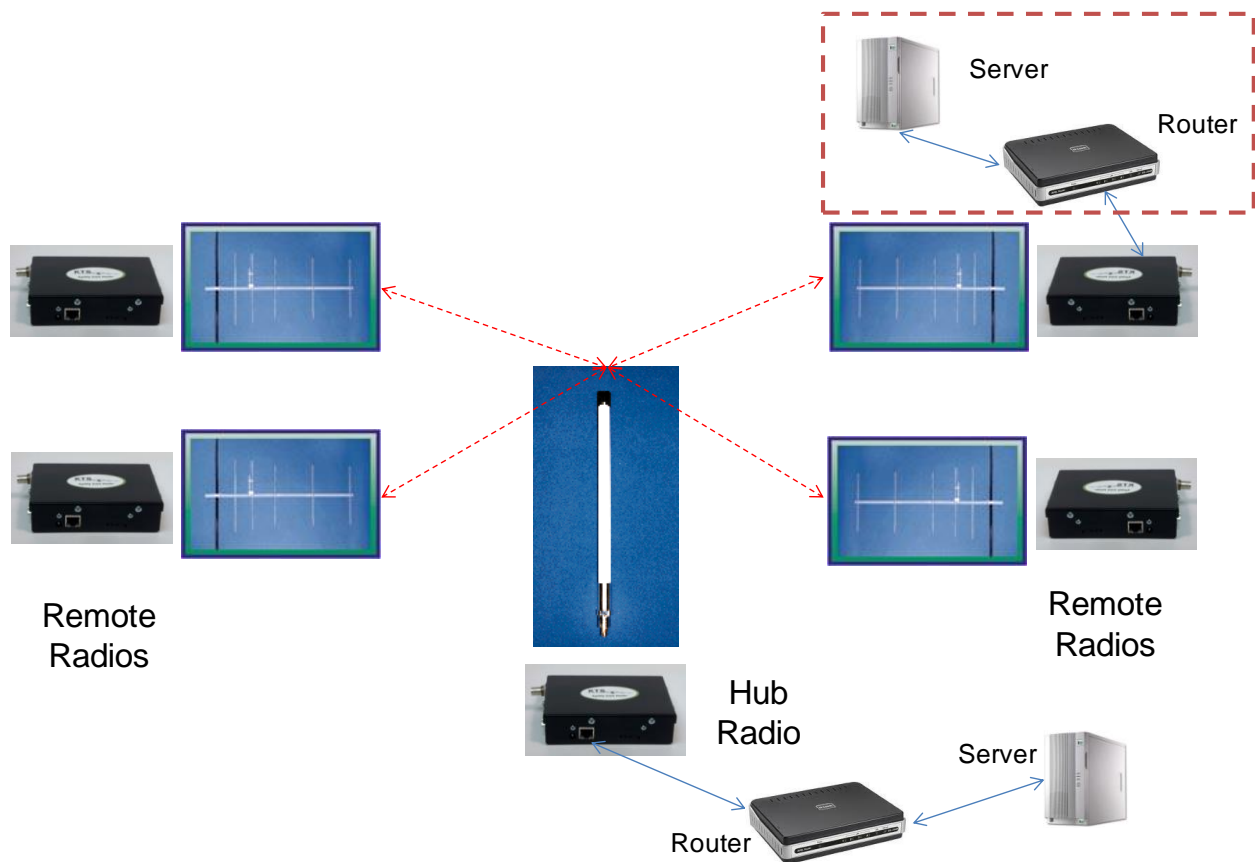


Figure 2.1: Star Network Configuration

The Hub ADR is typically connected to an omnidirectional antenna via a length of coaxial cable. The signal transmitted by the Hub ADR is then transmitted in a 360-degree pattern to all remote sites within a range supported by the configured transmitted power. Each remote site

ADR is typically connected to a directional antenna via a length of coaxial cable. These antennas are 'pointed' toward the Hub to achieve maximum gain.

User devices are connected to the serial port or Ethernet connectors of the ADR. The point-to-multipoint network shown in Figure 2.1 interconnects the Hub ADR with all remote ADRs over the air. Media Access Control (MAC) software within the ADR allows all the radios to share the wireless spectrum on a non-interfering basis. Several options exist for the MAC software used by the ADR. A Device-controlled MAC is used for Link Configurations 1-5 and 10 (see section below). This MAC relies on the host connected to the Hub radio via the Ethernet or serial port to control which remote radio is used and when. It does this through a remote device polling scheme that results in only one device talking at a time. The host polls an individual device and waits for a reply. The polled device sends back its reply message and the hub polls the next device in the polling list. The user host device controls the order and times when each device transmits and since only one is polled at a time, there are never any collisions. For Link Configurations 6-9 are selected, it is assumed that the user traffic is IP and there is not a single host in the network polling each device. When these Link Configurations are used, the Hub ADR performs the polling of all remote ADRs. This happens automatically and transparently to the user devices. This MAC is referred to as Poll/Select. When a remote ADR receives an IP message over the Ethernet port it is routed through a Learning Bridge in the ADR. If this bridge determines it should be transmitted over the air, the ADR buffers the message until the next poll is received from the Hub ADR and transmits the message.

Link Configurations (LC)

1. **Serial:** LCs 1-3 are selected when the ADR is to operate with FSK modulation operating in 12.5, 25 or 50 kHz channels, respectively. The MAC is set to user device-controlled. The radio does not use an internal MAC. The host connected to the radio at a central site polls devices connected to the set of remote radios, one at a time. This host polling controls all radio transmissions since radios only transmit when there is data on the serial port. These user devices only respond to polls/messages from the central Host which is polling these devices one-at-a-time.

2. **Ethernet:** LCs 4-7 are selected when the ADR is to operate with FSK modulation operating in a 25 kHz, 50 kHz, 1.5, or 2.5 MHz channels are used. These channels cannot be used without the appropriate FCC licenses. Each radio must be configured as a Hub or Remote. The Hub ADR will accept user messages over the Ethernet LAN Port. All messages transmitted by the Hub Radio are received by all Remote Radios and passed out of the LANI port.

3. Experimental - White Space: LCs 8 and 9 may only be used under an experimental FCC license. These modes can only be accessed with EMS connected to a wideband version of the ADR and using a special password login provided by KTS Wireless. LC 8 uses FSK modulation and transmits a carrier at 1.5 Mb/s which complies with the current FCC emission limits. LC 9 uses Shaped Offset Quadrature Phase Shift Keying (SOQPSK) modulation and transmits a carrier at 3.1 Mb/s which also complies with the current FCC emission mask.

Again, these modes may not be used without an FCC experimental license and use of a TV channel that is not in use by incumbent users. See the Spectrum Bridge website (showmywhitespaces.com) for a list of available channels in the area of planned use.

3.0 Specifications

Electrical

Frequency bands

Low Band	145 to 225 MHz
Mid Band	225 to 470 MHz
High Band	470 to 930 MHz

RF Transmit Power 17 to 32 dBm

Noise Figure 4 dB

Spurious & Harmonic Emissions FCC Part 15 & 90 compliant (217-220 MHz)

Blocking/Selectivity 60 dB, typical

Data Rates 2.4 kb/s to 3.1 Mb/s

Channel Bandwidths*

Narrowband	12.5, 25 or, 50 kHz
Wideband	1.5 or 2.5 MHz

Modulation 2-FSK, SOQPSK (6 MHz chn only)

Frequency Selection 12.5 kHz steps

Operating mode Burst, Time-division duplexing

Mechanical

Dimensions 4" x 5" x 1.4"

Enclosure material AL, Black powder coating

Weight (wall mount) 400 g

Mounting (ordered separately) L-DIN, Flat-DIN or wall mount (with optional integral fan)

Environmental

Operating Temperature Range -30 to 55⁰ C

Operating Humidity Up to 95%, non-condensing

Power

Input Voltage +9 to 14 VDC

Consumption

Transmit	1.5 A
Receive	0.5 A
Idle	0.1 A

* Narrowband option utilizes a 100 kHz low-pass filter (LPF) (factory installed) to improve blocking/Selectivity. Wideband Option includes a 2.5 MHz LPF. Only Link Configurations 1-5 are supported with the Narrowband option.

Specifications are subject to change without notice.

4.0 ADR Element Management System

The ADR Element Management System (EMS) is provided with the radios to support configuration via a laptop connection. The software runs on a laptop (MAC or PC) with Sun Microsystems JAVA. JAVA is available free and can be downloaded from the following website:

<http://www.java.com/en/download/>

EMS Software Installation

The EMS software is available free to customers on the KTS Wireless website (www.ktswireless.com). It does require a user password to open and one will be issued to each customer.

Copy the EMS program to the PC Desktop. The following icon will appear:



ADR_2.3.4.jar

EMS Operation

Figure 4-1 below illustrates how the laptop and radio are connected. A direct Ethernet connection is sufficient or both can be connected via a LAN. If directly connected, the laptop must be configured on the same subnet as the Radio. All radios are shipped with a default IP address of **192.168.1.4**. The laptop's IP address should be temporarily set to an address on the same subnet (i.e., 192.168.1.198 for example).

Once this is complete, the configuration process can start by following the steps below.

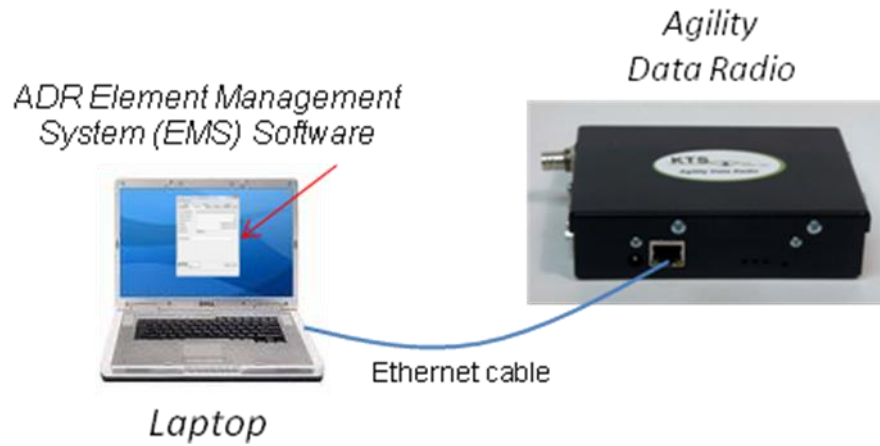
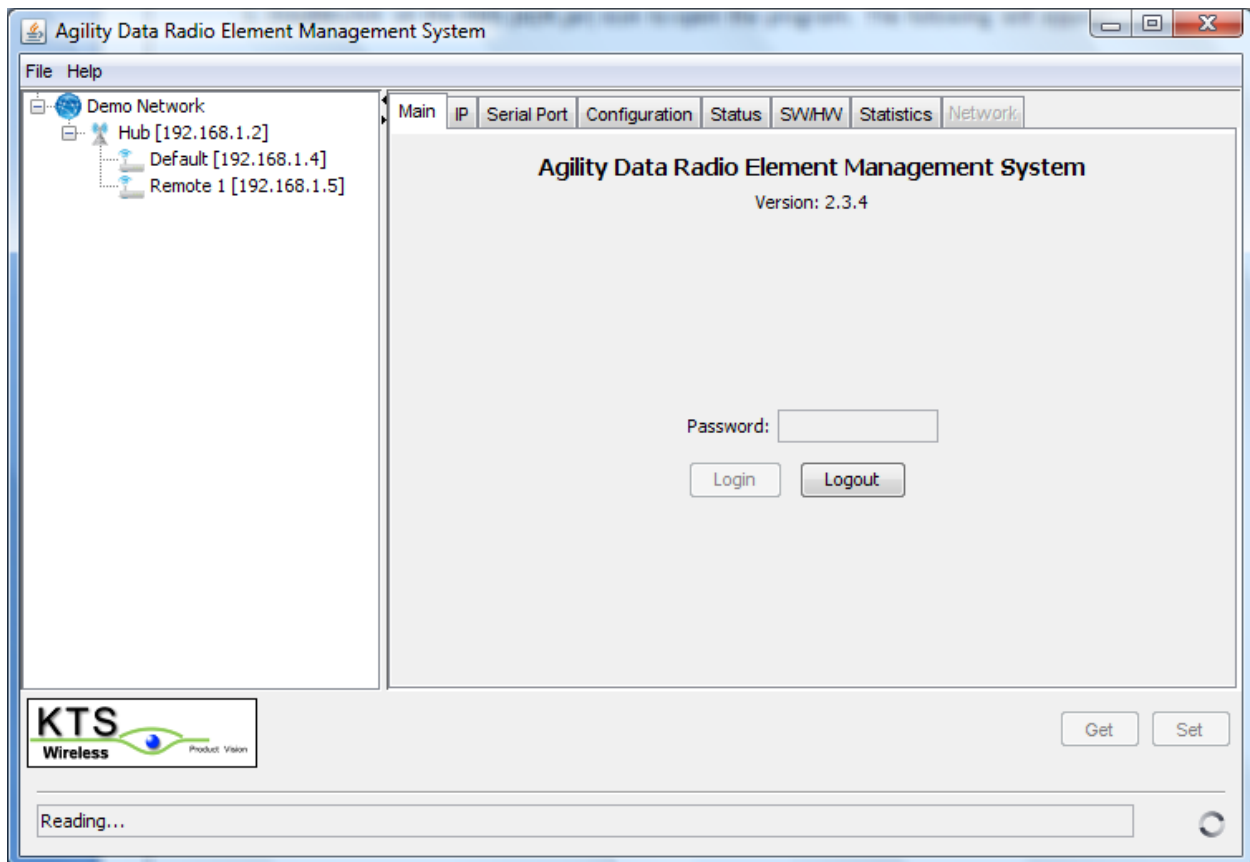


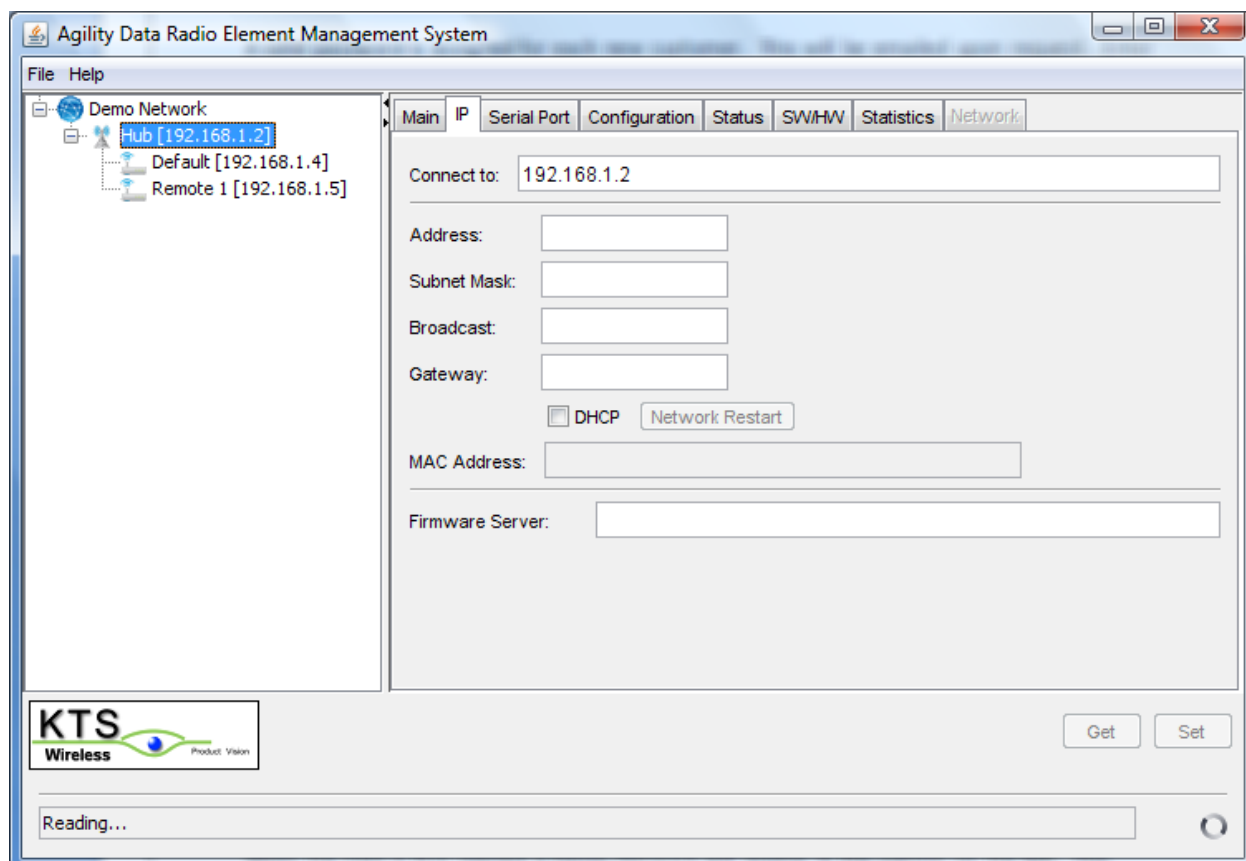
Figure 4-1: EMS Laptop to ADR connection

1. Double-click on the EMS (ADR.jar) icon to open the program. The following will appear:



A valid password is assigned for each new customer. This will be emailed upon request. Enter the password and click on Login.

2. The following screen will appear after Login (**IP Tab**):



When the EMS is first opened a Demo Network will appear in the column on the left. This network consists of a Hub and two remote sites. This is simply a 'placeholder' for the 'real' network to be managed and serves as a template to get started. Position the cursor over the 'Demo Network' title and right click. Select Properties from the drop down menu. Edit the name of the network to fit the application and click Save. Next, position the cursor over Hub and right click. Select Properties from the drop down menu. Enter the desired name for the Hub site and the IP Address for the Hub ADR then click on Save. Follow this same procedure to rename and set the IP address for the first two Remote sites. Holding the cursor over any Remote and right-clicking will display a drop down menu that will support adding, editing or removing sites. Add all of the desired remote sites to the network using this procedure.

This process does not change the IP Address stored within the ADR. This must be done manually for each radio so that they match what was entered in the radio table in the EMS.

Once all sites are entered along with their desired IP address, highlight the site to be managed by the EMS. The IP address of the highlighted site will appear in the Connect to field on the right and the EMS will attempt to connect to that ADR. IF the connection is successful, the configuration information will be retrieved and displayed for all tabs. Before this can be done, the IP address of each ADR must be changed from the default value (192.168.1.4) to the desired value entered in to the node table in the left column. Use the process below to change the IP address of the ADR:

1. Connect the ADR as shown in Figure 4.1
2. Open the EMS program to the IP tab
3. Highlight the Default site in the left column
4. Observe that EMS successfully connected to the ADR and the fields on the IP screen were updated
5. Enter the desired IP Address in the Address field (not the Connect to field).
6. Make any other desired changes in the other fields displayed.
7. Click on the SET button (lower right)
8. Click on the Network Restart button (center)
9. Highlight the desired name of the site in the right column (includes the new IP address)
10. Verify that all of the desired changes are displayed correctly which indicates the changed values are now stored in the radio's non-volatile memory

The ADR can automatically get an IP address assigned by a DHCP server on the network by clicking the DHCP box.

The Firmware Server is the IP address to a TFTP Server which has the latest version of software to be used by the Radio. This default address is 192.168.1.198. The SW/HW tab includes CPU and FPGA Update buttons which can be used to update the ADRs software. This can be done using the standard TFTP protocol and Server or via Modbus/TCP (discussed in step 7). The

FPGA code is used for the Physical Layer and the CPU code supports the MAC Layer, Network Management and User Interfaces. KTS Wireless will periodically update this software and distribute it to its customers. A link to free TFTP Server software for a PC or MAC is also available from this website. This will allow Network Technicians to load the latest software locally during installation. The Firmware Server IP Address can point to a Server anywhere on the Internet or intranet as long as it is reachable by the ADR. Normally this address is for the local PC connected to the ADR and is running both the EMS and TFTP Server software. Each of these code sets are about 600 kBytes. Downloading them over the air through a narrowband channel operating at 17 or 34 kb/s will likely take a significant amount of time (>15 mins) and may impact normal traffic. Note: Over-the-air downloading is only supported with Link Configurations 4-9 (See Step 4). Other Link Configurations require local updating using the TFTP Server within the laptop directly connected to the ADR.

The Firmware Server IP addresses is required if TFTP is used for software downloading. This is the IP address used by the ADR to request a software update. If it is entered or changed, click on the Set button at the bottom of the tab to have them sent to and stored by the ADR.

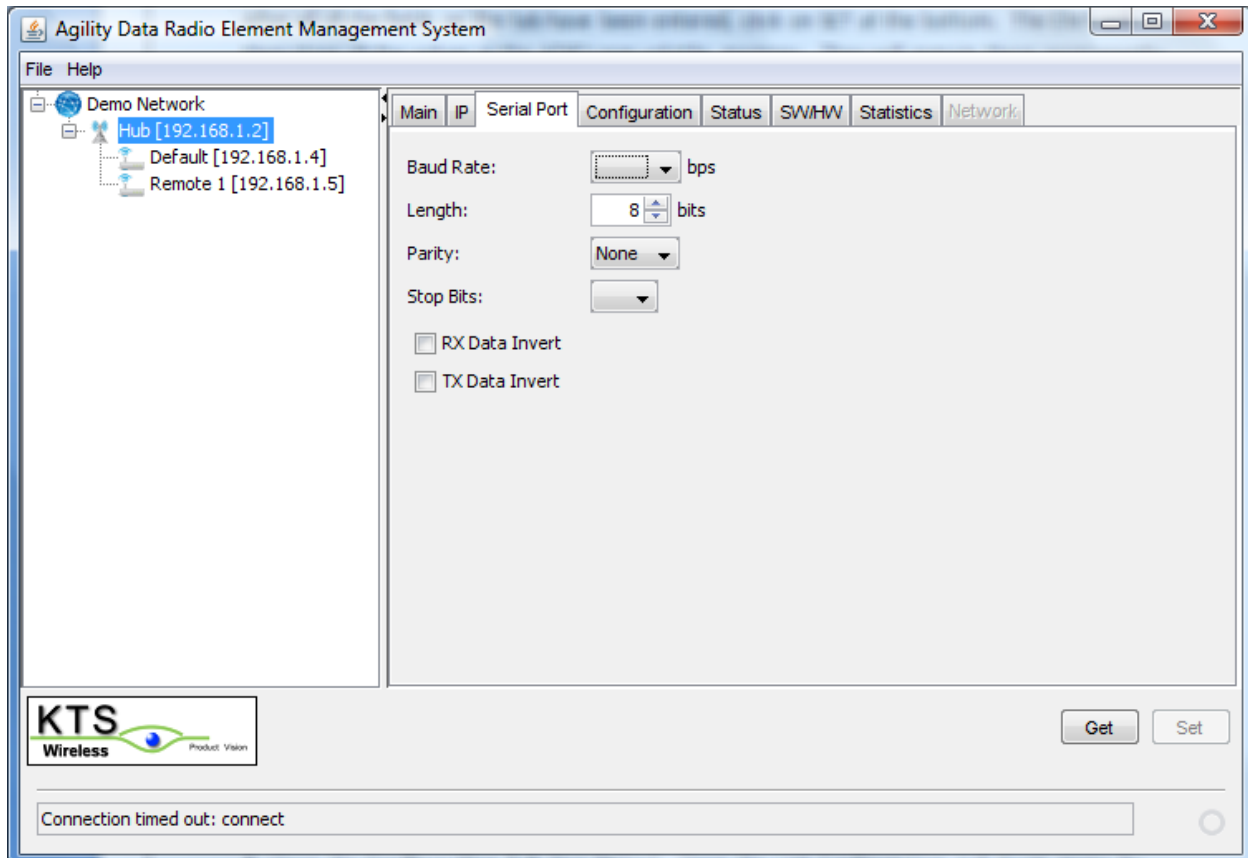
‘Done Writing’ or ‘Done Reading’ will appear at the bottom of the tab after each Set and Get respectively when the action is completed successfully.

3. The Serial Port tab is shown below and is used for all non-Ethernet/IP Link Configurations (LCs 1-3) where the serial port is used. Selecting the Link Configuration will result in the setting the serial port to a default state. Individual parameters, however, can be changed. If this is the case, first select the desired baud rate from the pull-down menu. Next, select the character length, Parity and Number of Stop Bits from the associated pull-down menus.

The received data from the ADR to the user device can be inverted by checking the RX Data Invert box. Likewise, the transmit data to the ADR from the user device can also be inverted by checking the TX Data Invert box.

The serial port protocol used is always Transparent Mode. This mode supports most asynchronous protocols like Allen-Bradley, Modbus and others. User data bytes received by the ADR over the serial port are ‘collected’ into a packet until the line goes idle (no activity for 3 character times). After this wait time, the packet is immediately transmitted over the wireless link. All packets received over the wireless link are immediately transmitted out over the serial port.

After all of the fields on the tab have been entered, click on SET at the bottom. The EMS will then store all the values in the ADR's non-volatile memory. They will remain there permanently until changed.

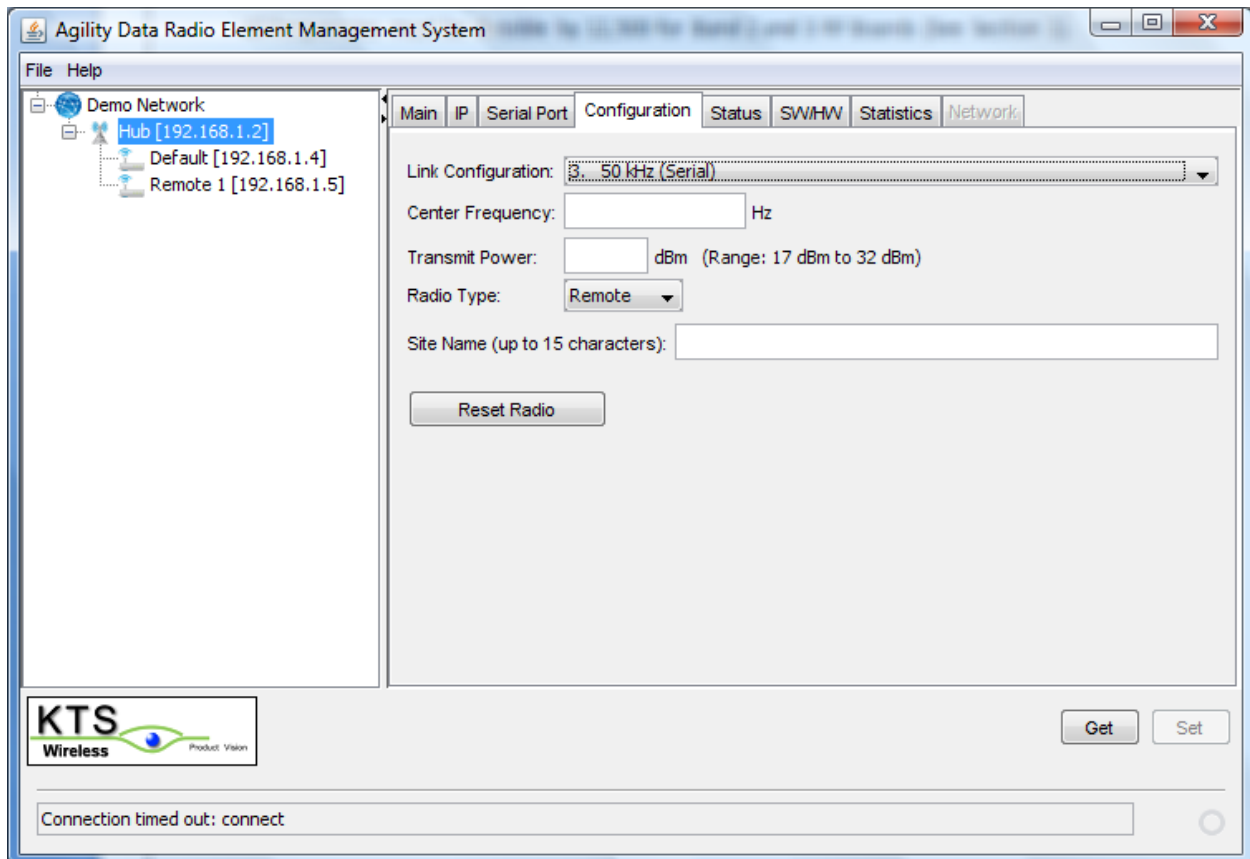


4. Open the Configuration Tab (See below). Open the Link Configuration pull-down menu by clicking on the down arrow at the right. A list of available link configurations will appear. Select the desired configuration from the numbered list. The desired choice will appear in the Link Configuration field. Section 2 of this manual contains a description of the Link Configurations supported by the ADR. The Link Configuration parameter automatically sets the modulation format, user port configuration, MAC type, over-the-air-data rate and channel size. All ADRs in the same network must use the same Link Configuration.

Enter the desired Center frequency of the channel to be used. Care must be taken to obtain proper approval for the use of this channel. This is a value in Hertz (Hz) and may be entered with or without comma separators but must not include a decimal point. For example, an

authorized channel frequency of 172.2625 MHz must be entered as 172262500 or 172,262,500. All frequencies must be divisible by 12,500 for Band 2 and 3 RF Boards (See Section 1).

Enter the desired RF Transmit Power. This is entered as an integer between 17 and 32 and in units of dBm. Ensure that this power level does not exceed the applicable regulations.



The Hub is the single, master radio network that communicates with all other radios. It must be able to communicate over the air to all remotes. If Ethernet/IP networking is used (Link Configurations 4-9), hosts and servers may be connected to remote ADRs. They can be accessed by other remotes through the Hub. This normally occurs automatically within the bridging software in the ADRs.

A Site Name can be assigned to the ADR that corresponds to site or location to help identify which radio is it in the network (i.e., Pump Site 1). This allows the Network Operator to keep track of the radio's current location. Up to 15 characters can be entered.

After all of the fields on the tab have been entered, click on SET at the bottom. The EMS will then store all the values in the ADR's non-volatile memory. They will remain there permanently until changed.

6. Open the **Status** tab (See below). This tab contains information about the current status of the ADR. The definitions for the 5 indications are:

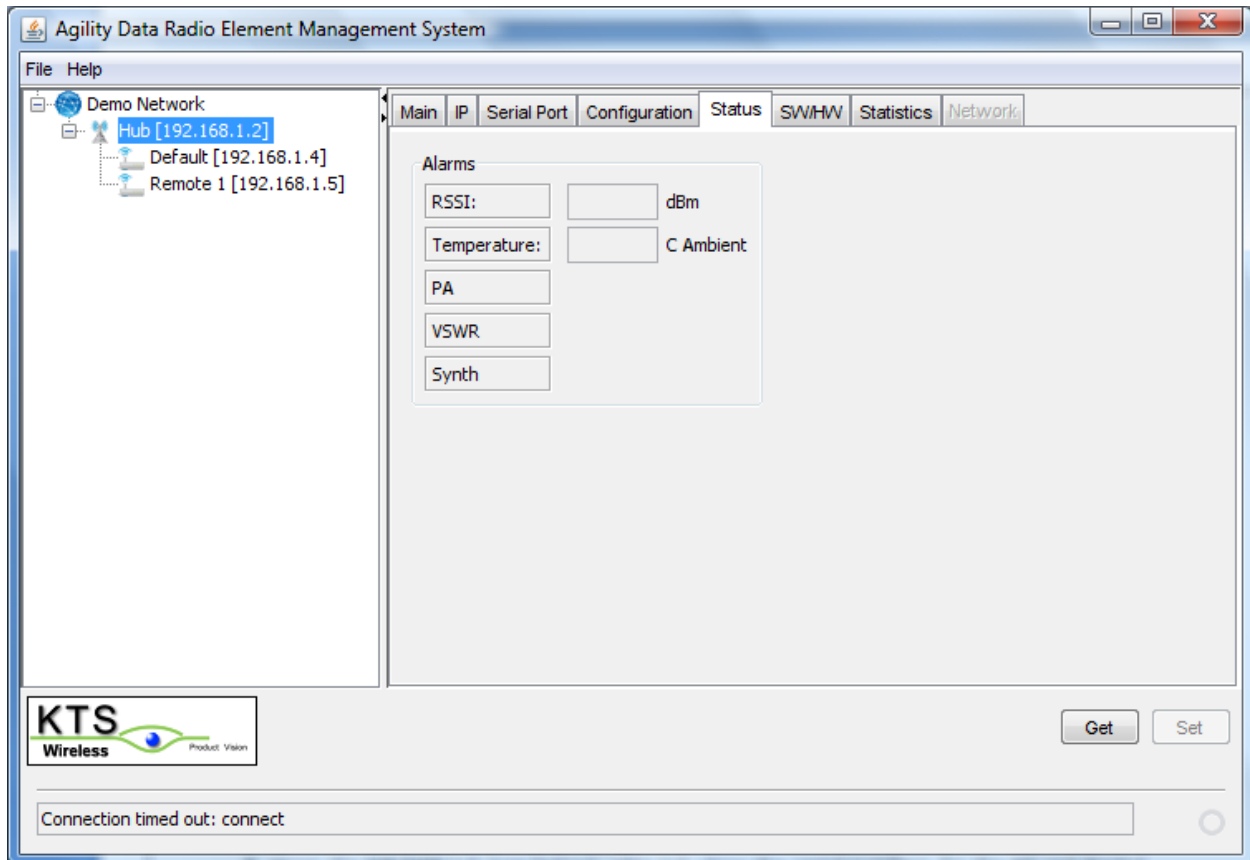
RSSI: Receive Signal Strength Indication. It is an estimate of the received signal power of the most recently receive valid message following the Get. The units are dBm and range from about -120 to -30.

Temperature: This is an estimate of the ambient air temperature around the ADR. A sensor inside the radio records the internal temperature. This value is used to estimate the air temperature surrounding the Radio. The accuracy of the estimate depends on how well the ADR is heat-sunk to the structure it is mounted to. The current value is compared to high and low preset temperature thresholds (factory defaults) to determine if a temperature fault is present. If so, this field on the tab will be highlighted in red. The ADR Summary Fault LED will also be illuminated. The specified operating temperature range of the ADR is -30 to +55 degree C.

PA: This fault is for the ADR's internal transmit RF Power Amplifier. If a transmission occurs at a power level that is 2-3 dB below the power set on the Configuration Tab, a fault will be indicated. The Radio includes a transmit power detector and monitors the power level of each transmission.

VSWR: This refers to Voltage Standing Wave Ratio and is measure of the transmitted power that is reflected back from the antenna. Ideally, all power should be transmitted in the forward direction and radiated by the antenna. If the connection between the ADR and the antenna is poor or degrades over time (i.e., due to water intrusion or corrosion), the reflected power will increase. If the threshold value for the reflected power is exceeded, this fault will be reported. The antenna-to-Radio connection should be carefully inspected if this fault ever occurs.

Synth: This refers to the ADR's internal Frequency Synthesizer. A fault can be caused by entering an invalid frequency or a hardware failure within the ADR. Valid frequencies must be divisible by 12,500 Hz and must be within the design range of the RF Card installed in the ADR (See Section 1). A Synth fault will prevent the Radio from transmitting. If a fault occurs, make sure the Center Frequency is entered properly. If it has been, a hardware failure has likely occurred.



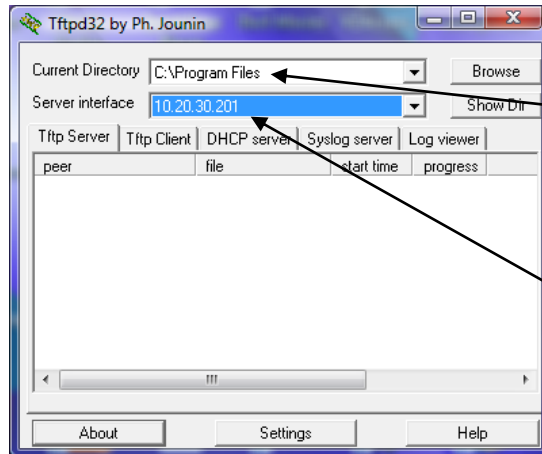
7. Open the **SW/HW** tab (see below). This tab show the serial numbers for the RF and Digital circuit boards installed in the ADR and the top-level, ADR serial number. This top-level assembly number should match the printed label on the back of the Radio. These values are stored in the ADR's memory and cannot be changed by the user. The RF Band supported is also indicated.

The software version numbers for the CPU, FPGA and MCU. The CPU and FPGA are processors on the Digital Board. The MCU is a processor on the RF Board and cannot be updated in the field. The CPU and FPGA software elements are updated from time to time by KTS Wireless and made available to customers. Updated versions can be loaded on to a TFTP Server with the IP address that is recorded on the IP tab (Firmware Server). Once loaded on a server accessible by the ADR, it can be downloaded to the ADR by performing the following:

1. Select TFTP as the Update Method. See Section 5 for additional details.
2. Select CPU or FPGA as the software Component to be updated

3. Verify that the TFTP Server is running and the main.bin and fpga.bin files are loaded in the appropriate directory. Note the file names cannot be changed.

4. Verify that the TFTP Server interface and current directory are properly configured.



Directory where main.bin (CPU SW) and fpga.bin (FPGA SW) are stored.

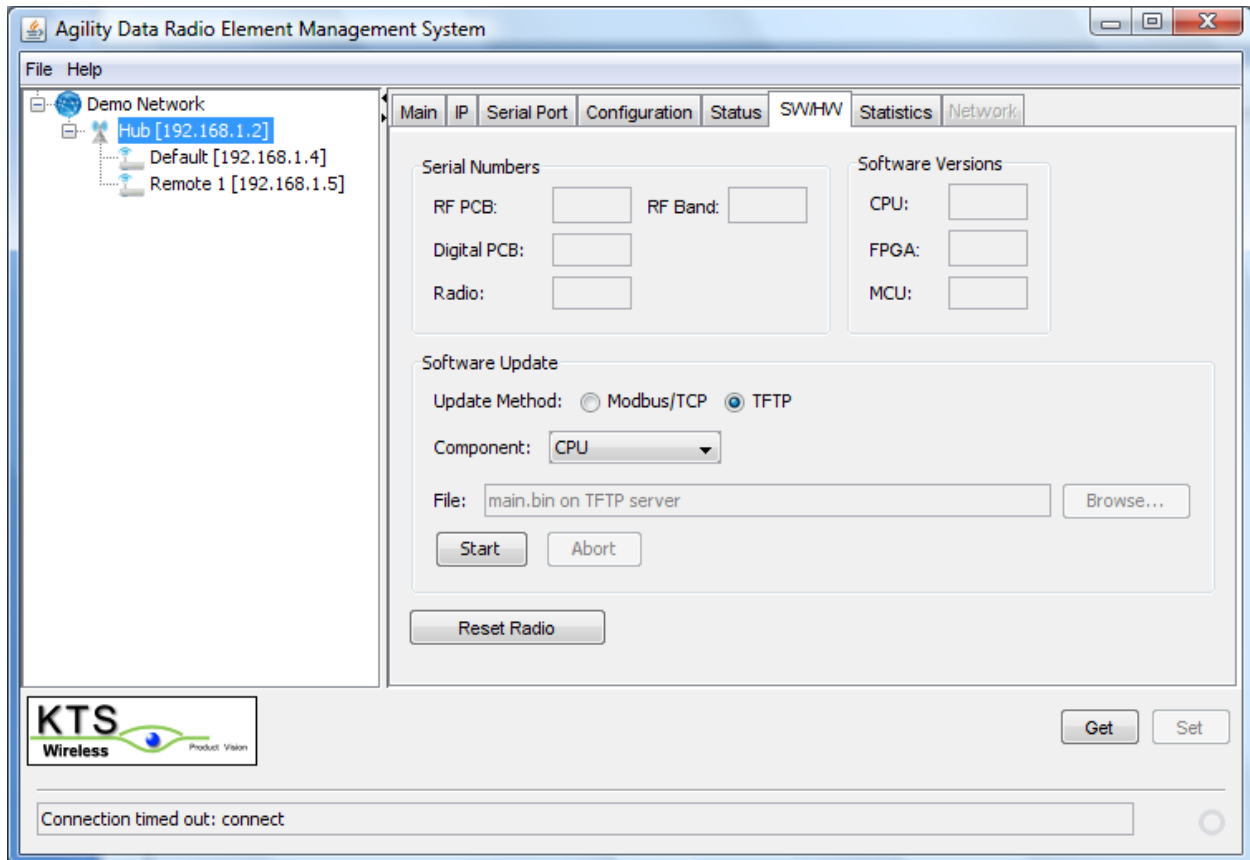
Must be the same as the Firmware Server address on the IP Tab.

5. Click on the Start button. Verify that data is being transferred by the TFTP Server (message displayed).

6. The ADR will reset after the download is complete. This will be indicated by all LEDs flashing briefly. After about 7 seconds, the rebooting will complete.

7. Click on the GET button (lower right) and verify the appropriate SW Version number (CPU or FPGA) has changed to the proper number. If no change in this version number occurs, the download was not accomplished successfully.

The MCU software cannot currently be updated in the field.



Modbus/TCP can also be used as the method of software updating. This method does not require a TFTP Server or any other supporting software. The following outlines the steps required for this method:

1. Select Modbus/TCP as the Update Method. See Section 5 for additional details.
2. Select CPU or FPGA as the software Component to be updated
3. Press Browse and select the path to the appropriate download file (main.bin for the CPU or fpga.bin for the FPGA). Note, these names cannot be changed.
4. Click on the Start button.
5. The ADR will reset after the download is complete (10-20 secs). This will be indicated by all LEDs flashing briefly. After about 7 additional seconds, the rebooting will complete.

6. Click on the GET button (lower right) and verify the appropriate SW Version number (CPU or FPGA) has changed to the proper number. If no change in this version number occurs, the download was not accomplished successfully.

8. Open the **Statistics** tab (See below). This tab includes traffic statistics kept by the Radio along with operating temperature ranges (recent high and low limits). Collection of these statistics starts when the Start button is pressed. All values are first cleared and counts continue until each Update Period ends. When this period ends the accumulated counts are displayed in the appropriate fields. Another collection period begins immediately after the previous one ends. The statistics fields are updated with new counts for the last completed collection period. This process continues until the Stop button is pressed. Temperature extremes are not reset for each collection period but are remembered for the duration of the monitoring session (i.e., until the Stop button is pressed).

The screenshot displays the 'Agility Data Radio Element Management System' window. The interface includes a menu bar with 'File' and 'Help'. On the left, a tree view shows a 'Demo Network' containing a 'Hub [192.168.1.2]', 'Default [192.168.1.4]', and 'Remote 1 [192.168.1.5]'. The main area features a tabbed interface with 'Main', 'IP', 'Serial Port', 'Configuration', 'Status', 'SW/HW', 'Statistics', and 'Network'. The 'Statistics' tab is active, showing a table with the following data:

Name	Value
Total Number of Valid Messages Received	
Number of Received Messages With Errors	
Number of Transmitted Messages	
Number of Control Messages Sent	
Number of Control Messages Received	
Lowest Operating Temperature	
Highest Operating Temperature	
Start Time of This Report	unknown

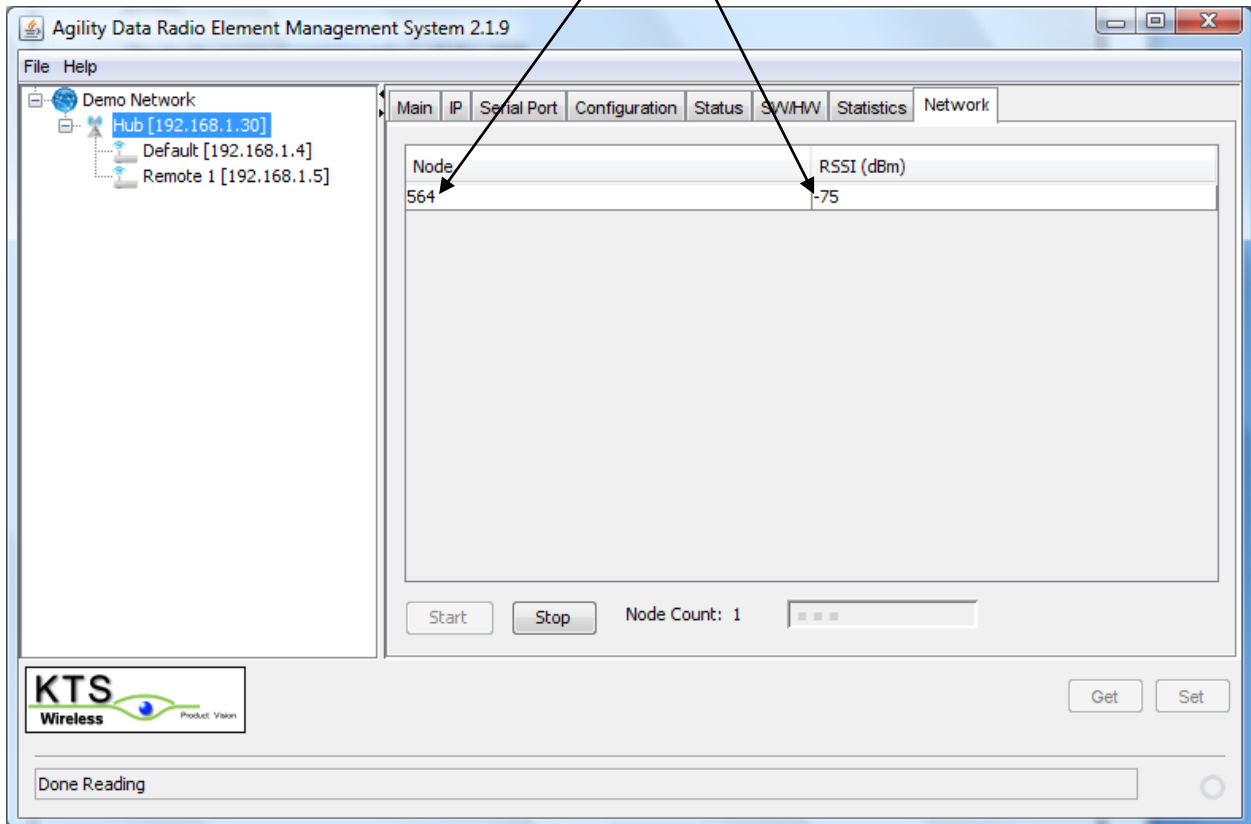
Below the table are controls for 'Start' and 'Stop' buttons, an 'Update Period' of 1 minutes, and an 'Elapsed' time field. At the bottom right, there are 'Get' and 'Set' buttons. A status bar at the bottom left shows the message 'Connection timed out: connect'.

9. Open the **Network** tab (see below. This tab contains a list of all the remote ADR's that are currently connected over the wireless link to the hub. ***This list is only displayed when then the EMS is connected to a hub radio that is operating in Link Configurations 6-9 (i.e., using the Poll/Select MAC).***

Click on the Start button at the bottom of the tab. The hub radio will report all of the remote ADRs that have joined the wireless network with the Hub and display the RSSI (power level of last message received from that ADR). This list is automatically updated by the EMS once per few seconds until the Stop button is pressed. The Node Count is the total number of ADRs joined.

The Node name is serial number of the ADR.

Serial Number of Remote that joined
RSSI of last packet from the Remote



5.0 Upgrading Software

The software in the ADR can be upgraded in the field to support new features or correct any problems. This can be done locally through the Ethernet port and remotely over the air if one of the IP-based link configurations is used (See Section 2.0). The radio has two types of software which can be field-upgraded (CPU and FPGA). The CPU code controls the higher-level functionality within the radio including the MAC, networking layers, network management and user interfaces. The FPGA code supports the Physical layer.

Software upgrades for both the CPU and FPGA code are provided periodically by KTS wireless. Users are notified when these become available. Some upgrades may be mandatory to resolve problems while others may be optional if they include new features. Release notes will be available for each new version outlining the changes. Some new releases may require additional fees and/or licensing agreements.

The following procedure outlines the steps involved in a field software upgrade:

1. The user will be emailed a zipped file containing the new version of the software. This may include one or two files. The CPU and FPGA code can be upgraded separately or in certain cases must be upgraded simultaneously. If two files are included, both must be upgraded at the same time to ensure compatibility.

2. The email attachments will include one or both of the following files:

main.zip

fpga.zip

The files will be zipped with a password that will be provided in the email with the files or a separate one sent to the same email address.

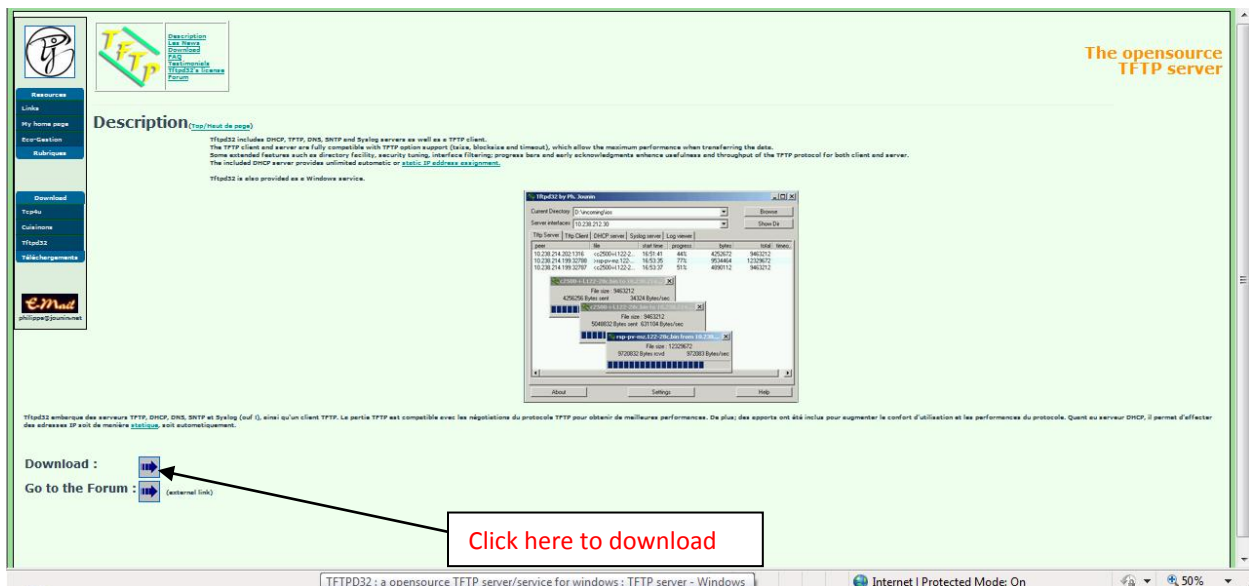
3. Using WinZip or compatible file compression program, extract the file(s) and store on your PC. It may be convenient to create a folder containing these software upgrade files. **Do not rename these files. They must use the same names as sent or the automatic download process outlined below will not work. Verify the file length of each is 500 to 700 KBytes. Do not attempt to load a file that is smaller, as the file has likely been corrupted in the zipping/emailing/unzipping process.**

The EMS supports two methods of Downloading. One uses the TFTP protocol and Server and the other uses the Modbus/TCP protocol which is supported directly by the EMS. The following sections describe the procedure for both methods.

TFTP Downloading Method

1. If not done previously, download the open source TFTP Server to your PC. This is available free at the following website:

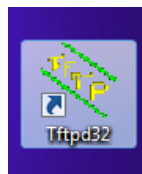
<http://tftpd32.jounin.net/>



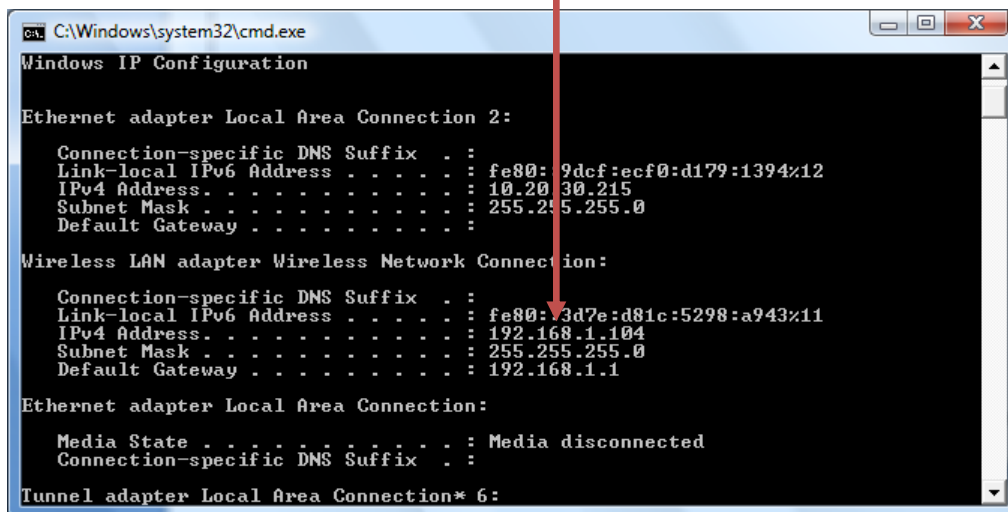
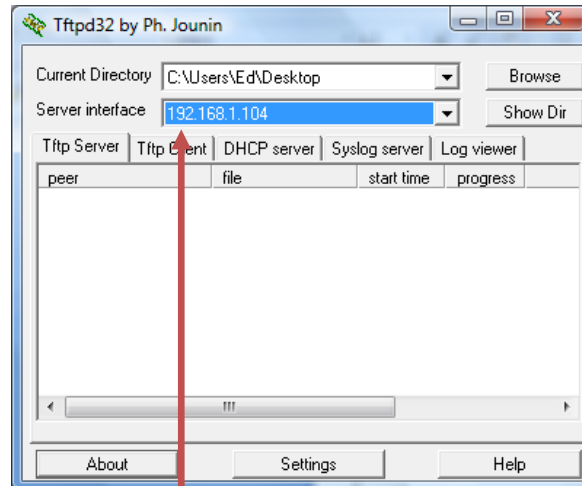
The screenshot shows the website for TFTP32, an open-source TFTP server. The page includes a navigation menu on the left with options like 'Resources', 'Links', 'My home page', 'Etc Gestion', 'Rubrique', 'Download', 'Tftp32', 'Customs', 'Tftp32', and 'Table des matières'. The main content area features a 'Description' section with text about the server's capabilities, including support for DHCP, DNS, and Syslog. A red box with the text 'Click here to download' points to a download button in the 'Download' section. An inset window shows the TFTP32 software interface, which includes a 'Server Address' field, a 'Server Address' dropdown, and a 'Show Dir' button. The interface also displays a list of files and folders, including 'tftp32.exe', 'tftp32.ini', and 'tftp32.log'.

Download the TFTP Server software (latest version), unzip and store on the PC Desktop.

Double-click on the icon to start the server to launch the tftpd32 server on the PC.



The following screen will appear. Select the directory from the Browse list and the file where the actual software download is stored from the Show Dir list. The Server Address should contain the IP address of the PC.



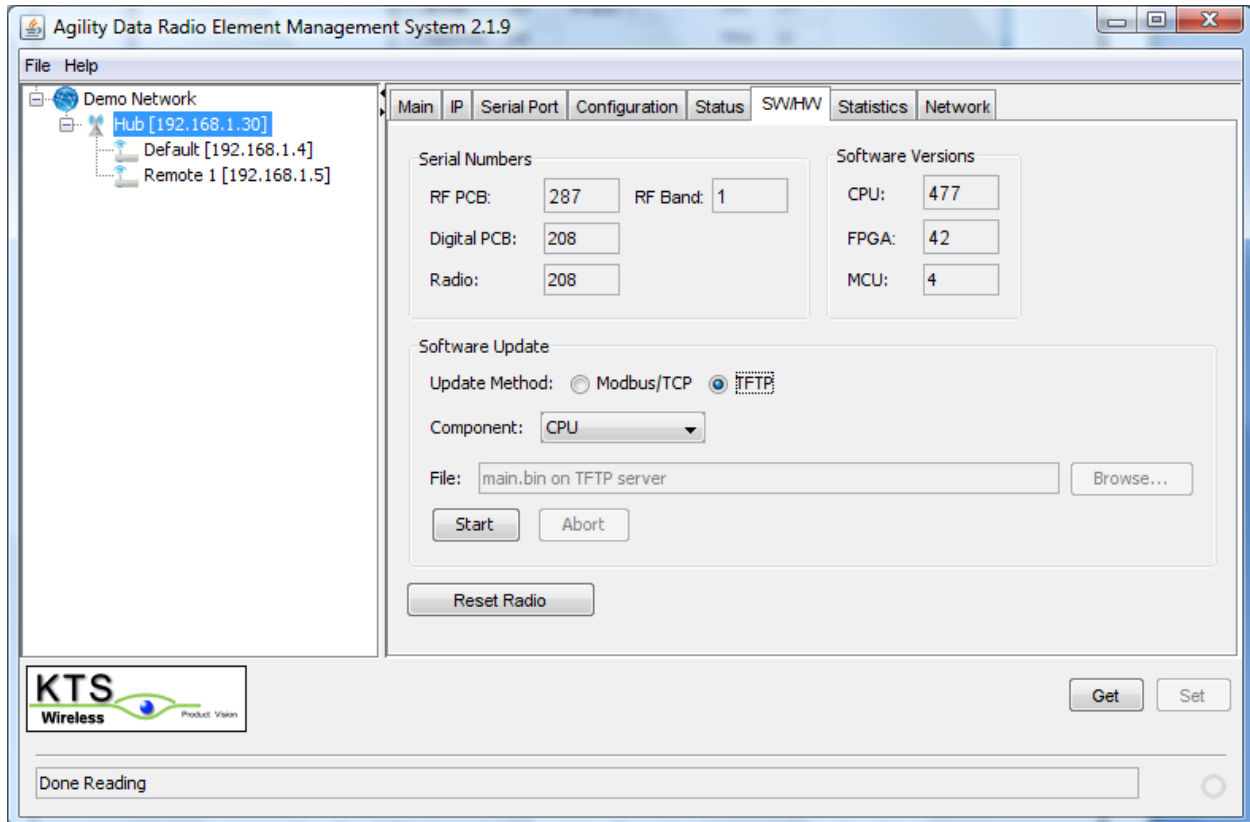
Use the **cmd** command and enter **ipconfig** to verify the current IP address of your PC. These will normally match when the tftpd32 software is started.

2. Start the EMS software by clicking on the following Desktop icon (see Section 4.0).



ADR_2.3.4.jar

Login using your assigned password and click on the SW/HW tab as shown below:



Click on the GET button (bottom right) to display the current versions of the CPU and FPGA software.

3. On the IP tab verify that the Firmware Server address is set to your PC's IP address and matches the address indicated in the **Server Interface** field of the tftpd32 Server. If not, change the Firmware Server address on the IP tab and press the SET button (lower right) and the Network Restart button. Click on the Get button to verify the new Firmware Server address is correct. Return to the SW/HW tab.

4. Select **TFTP** as the Update Method (center of the screen). If the software file to be upgraded is **main.bin**, select **CPU** as the Component. Click the **Start** button. The ADR will automatically establish a connection with the TFTP Server on your PC to request the new main.bin file. The TFTP Server will send the file with this name from the directory specified in the Current Directory field on the tftpd32 screen (Desktop or other specified folder). The download will take about 10-15 seconds. Upon completion the ADR will be automatically reset. A brief flashing of the three LEDs will occur when the reset is done. The radio will complete rebooting after the reset in about 7-10 seconds. After this reboot, click on the GET button on the SW/HW tab. If the download was successful, a new (higher) version number will appear in the CPU version field.

5. If the software file to be upgraded is **fpga.bin**, Select **FPGA** as the Component. Click on the **Start** button. The ADR will establish a connection with the TFTP Server on your PC to request the new fpga.bin file. The TFTP Server will send the file with this name from the directory specified in the Current Directory field on the tftpd32 screen (Desktop or other specified folder). This download will take about 60 seconds. Upon completion the radio will be automatically reset. A brief flashing of the LEDs will occur when the reset is done. The radio will complete rebooting after the reset in about 7-10 seconds. After this reboot, click on the GET button on the SW/HW tab. If the download was successful, a new (higher) version number will appear in the FPGA version field.

The radio should now be using the updated software. Steps 4 and 5 above can be done separately if only one of the two software types is to be upgraded.

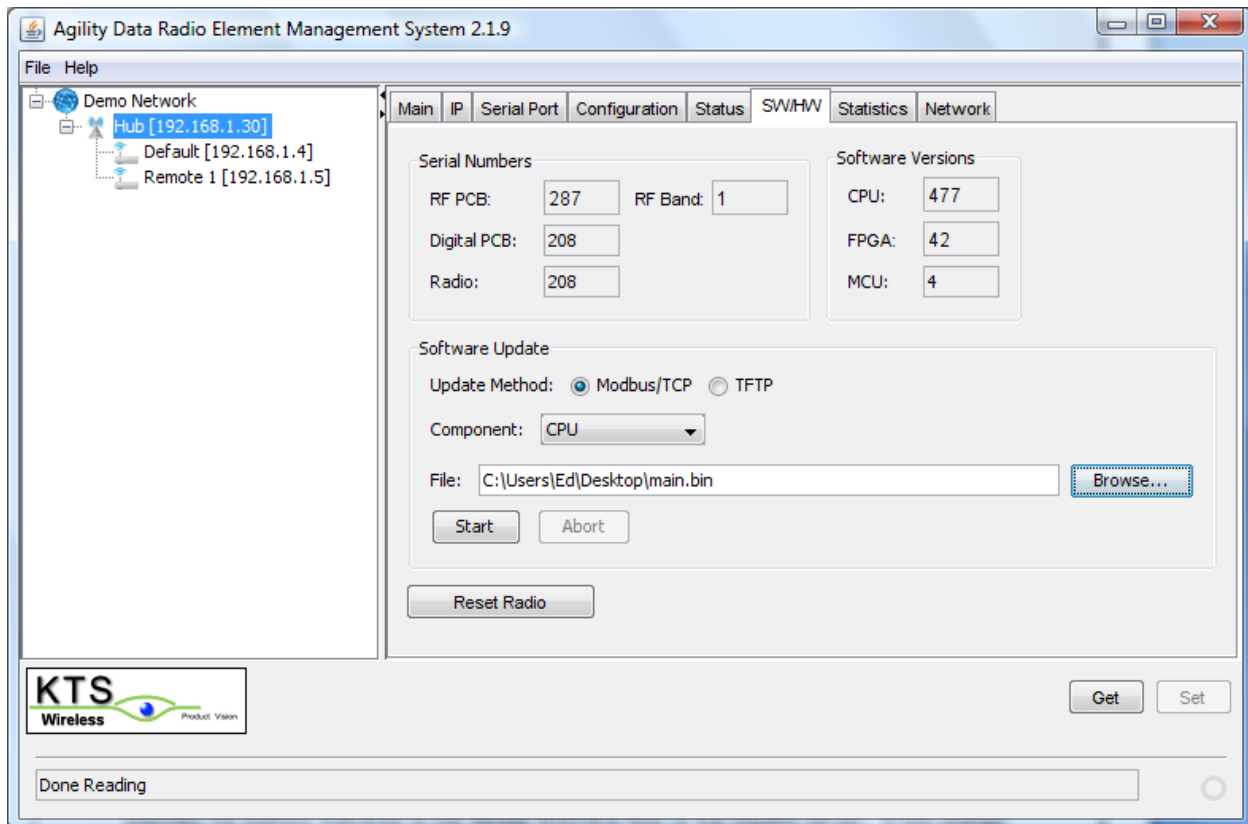
Modbus/TCP Downloading Method

2. Start the EMS software by clicking on the following Desktop icon (see Section 4.0).



ADR_2.3.4.jar

Login using your assigned password and click on the SW/HW tab as shown below:



Click on the GET button (bottom right) to display the current versions of the CPU and FPGA software.

3. Select **Modbus/TCP** as the Update Method (center of the screen). If the software file to be upgraded is **main.bin**, select **CPU** as the Component. Click on the Browse button and navigate to the main.bin file on the PC running the EMS. After the path to the file has been selected, click the **Start** button. The EMS will send the file with this name from the directory specified. The download will take about 10-15 seconds. Upon completion the ADR will be automatically reset. A brief flashing of the three LEDs will occur when the reset is done. The radio will complete rebooting after the reset in about 7-10 seconds. After this reboot, click on the GET button on the SW/HW tab. If the download was successful, a new (higher) version number will appear in the CPU version field.

4. If the software file to be upgraded is **fpga.bin**, Select **FPGA** as the Component. Click on the Browse button and navigate to the fpga.bin file on the PC running the EMS. After the path to the file has been selected, click the **Start** button. The EMS will send the file with this name from the directory. This download will take about 60 seconds. Upon completion the radio will be automatically reset. A brief flashing of the LEDs will occur when the reset is done. The radio

will complete rebooting after the reset in about 7-10 seconds. After this reboot, click on the GET button on the SW/HW tab. If the download was successful, a new (higher) version number will appear in the FPGA version field.

The radio should now be using the updated software. Steps 3 and 4 above can be done separately if only one of the two software types is to be upgraded.