



### Installing and Starting WideField2

IM 34M6Q15-11E

Please check the contents of the package after unpacking.

Package Contents	Quantity	Media
FA-M3 Programming Tool WideField2, User's Manual (electronic document)	1	CD-ROM
FA-M3 Programming Tool WideField2 Read Me First	1	Manual
FA-M3 Programming Tool WideField2 License Agreement	1	Sheet
Software User Registration Card	1	Sheet
CD-KEY	1	Sealed

The CD ROM contains the following main electronic documents.

Document Name	Document Number	Document Model Code
FA-M3 Programming Tool WideField2 User's Manual	IM34M6Q15-01E	DOCIM
Sequence CPU – Functions (for F3SP28-3N/3S, F3SP38-6N/6S, F3SP53-4H/4S, F3SP58-6H/6S, F3SP59-7S)	IM34M6P13-01E	DOCIM
Sequence CPU – Functions User's Manual	IM34M6P14-01E	DOCIM
Sequence CPU – Network Functions User's Manual	IM34M6P14-02E	DOCIM
Sequence CPU – Instructions User's Manual	IM34M6P12-03E	DOCIM
Personal Computer Link Commands User's Manual	IM34M6P41-01E	DOCIM

Hardcopies of the above user's manuals are not provided with this product. They can be purchased separately, if required, by quoting their respective document numbers and document model codes.

---

Blank Page

---

## A4. Installing and Starting WideField2

This section describes how to install the WideField2 software, how to remove it from the PC when it is no longer required, how to start the WideField2 software, and how to exit from the WideField2 software. It also describes how to install the USB driver.



### CAUTION

---

Always log in as the system administrator before installing, maintaining or removing the WideField2 software. Users without administrator access privileges are not allowed to install, maintain or remove the WideField2 software.

If your PC is running Windows Vista, select [Run as Administrator] and run the installer program. Installation cannot proceed without Administrator access privileges.

---



### CAUTION

---

If your PC is running Windows Vista with the User Account Control (UAC) function enabled, the installer program cannot be automatically executed from the product CD-ROM.

In this case, select "Setup.exe" on the CD-ROM using Explorer or some other means, and run the installer using "Run as Administrator."

---



### CAUTION

---

When installing WideField2, we recommend that you install WideField2 into a folder for which restricted users have access rights. If WideField2 is installed in a folder for which restricted users do not have access rights, they will not be able to use the WideField2 software.

---

## A4.1 Setting up WideField2

This section describes how to install and set up the WideField2 software on a personal computer.

### TIP

If you already have an older version of WideField2 installed on a PC, you may upgrade its version. Run the installation program as described below, and select the [Repair] option on the Welcome dialog to upgrade the software version.

### TIP

We describe here WideField2 setup in the Windows 2000 environment. Take note that there may be some differences in the procedure for different operating systems.



### CAUTION

Exit from all other applications such as virus protection software before installing the WideField2 software.

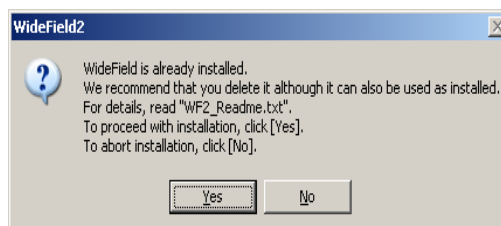
## ◆ Procedure ◆

### (1) Insert the product CD-ROM into the CD-ROM drive.

⇒ The installation program starts automatically.

#### TIP

If your PC is running Windows Vista operating system, select [Run as Administrator].



Step (1)

A0402\_01.VSD

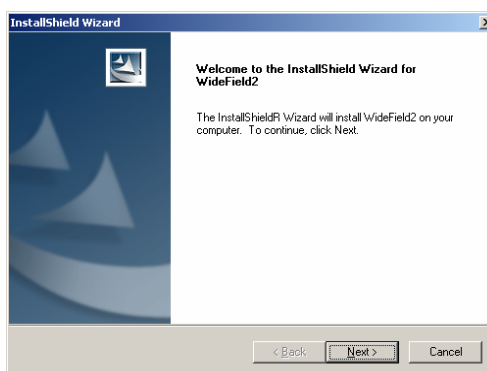
#### TIP

If an older version WideField (SF610) is already installed on the system, a confirmation dialog is displayed on the screen. Click [Yes] button to continue with installation.

⇒ The WideField2 InstallShield Wizard runs and opens the “Welcome to the InstallShield Wizard for WideField2” dialog box.

### (2) Click [Next].

⇒ The License Agreement dialog box opens.



Step (2)

A0402\_02.VSD

**(3) Click [Yes].****TIP**

A license agreement document is provided with the product. Click [Yes] only if you have carefully read the license agreement and agree with the terms therein. Clicking [No] aborts the installation.

⇒ The Customer Information dialog box will be displayed.

**(4) Enter the CD-KEY and click [Next].****TIP**

The CD-KEY is given on the registration card provided with the product.

⇒ The Choose Destination Location dialog box is displayed.

**(5) Select the installation destination and click [Next].**

⇒ The Select Components dialog box is displayed.

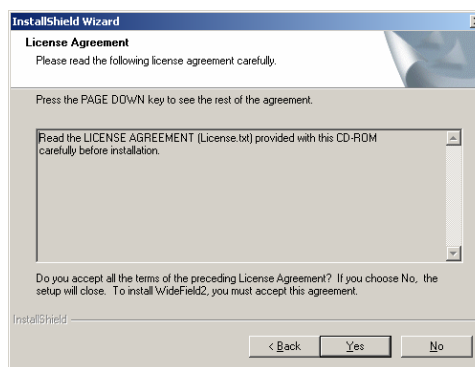
**(6) Select the components you wish to install and click [Next].****TIP**

The components available for installation include program files (WideField2 software and sample program files), instruction manuals and I/O module help files. Turn on the checkboxes for the components you wish to install.

⇒ Installation begins.

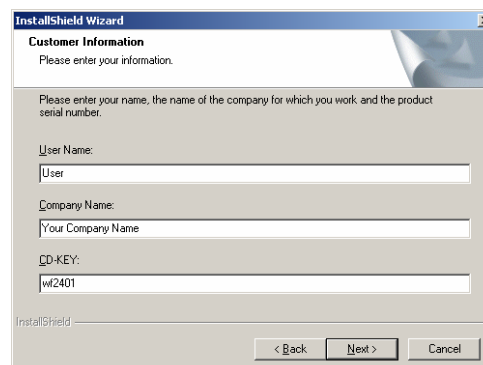
**TIP**

Restart the computer after installation ends.



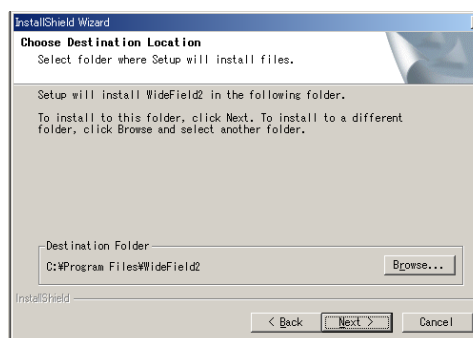
Step (3)

A0402\_03.VSD



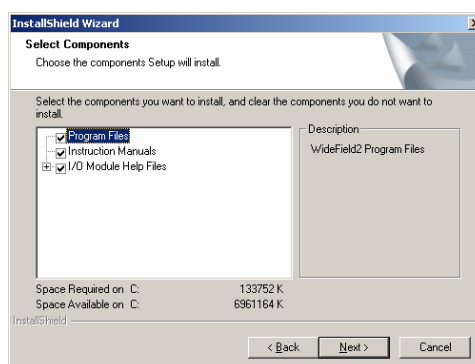
Step (4)

A0402\_04.VSD



Step (5)

A0402\_05.VSD



Step (6)

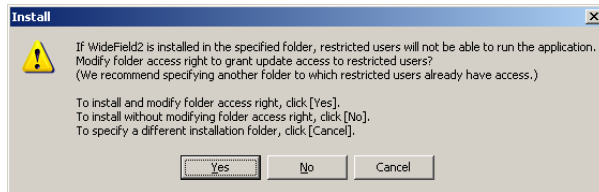
A0402\_06.VSD

## ■ Changing Folder Security

Windows allow a user to set access rights on folders. The WideField2 software should be installed in a folder for which restricted users have access rights.

You can also change the access right for an installation folder during the installation.

If you specify a folder for which restricted users do not have access right as the installation destination folder, the following message will be displayed.



A04\_05.VSD

**Figure A4.1 Changing Access Rights**

- [Yes] button  
Adds access rights to folder for restricted users, and allows restricted users to continue with installation.
- [No] button  
Continues installation without changing folder security.  
In this case, restricted users will not be able to run the WideField2 software.
- [Cancel] button  
Returns to an earlier screen to specify the installation destination folder.



### CAUTION

WideField2 frequently accesses system files in the folder where it is installed. Therefore, if restricted users are not granted update permission for the installation folder, they cannot use the WideField2 software.

We do not warrant that the operating system or other applications will operate correctly if and after folder security is changed.

## A4.2 Removing WideField2

This section describes how to remove the WideField2 software

### TIP

Removing the WideField2 software does not automatically delete project files or other application files previously created by a user. It also does not delete the USB driver software.

### ◆ Procedure ◆

(1) Insert the product CD-ROM into the CD-ROM drive.

(2) Using Explorer or some other program, move to the root folder on the CD-ROM, and browse the files in the folder.

(3) Select and run SETUP.EXE

### TIP

If your PC is running Windows Vista operating system, select [Run as Administrator].

⇒ The InstallShield wizard runs and displays the Welcome dialog box if WideField2 is already installed on your PC.

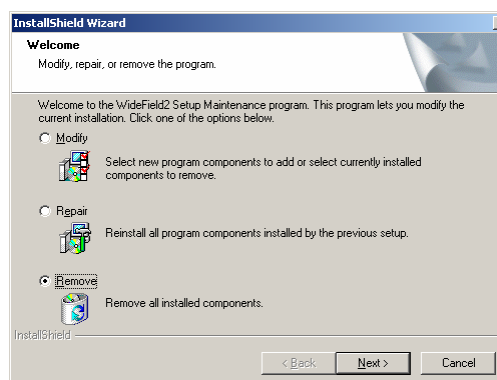
(4) Turn on the [Remove] option button and click [Next].

⇒ The Confirm File Deletion dialog box will be displayed.

(5) Click [OK].

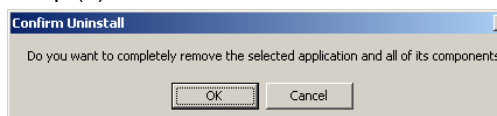
⇒ File deletion begins. The Maintenance Complete dialog box will be displayed when the program has been removed.

(6) Click [Finish].



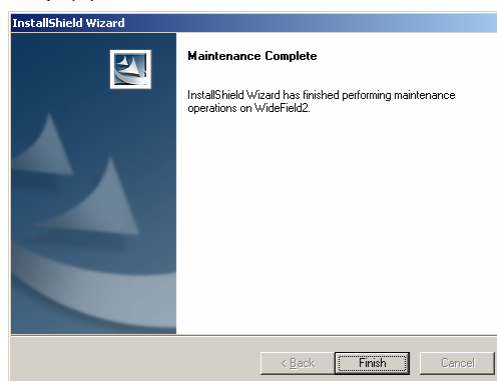
Step (4)

A0402\_07.VSD



Step (5)

A0402\_08.VSD



Step (6)

A0402\_09.VSD

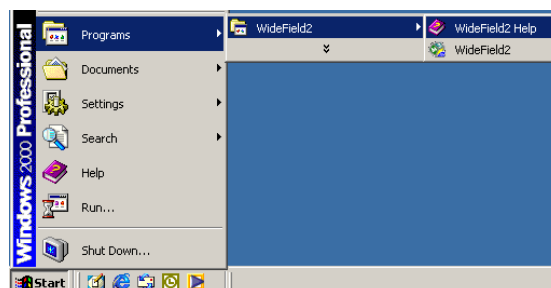
## A4.3 Starting WideField2

This section describes how to start the WideField2 software.

### ◆ Procedure ◆

(1) Select [Programs]–[WideField2]–  
[WideField2] from the Start menu.

⇒ WideField2 runs.



Step (1)

A04\_04.VSD



### CAUTION

Do not run the WideField2 software and the WideField (SF610) software concurrently.



## A4.4 Installing USB Driver

This section describes how to install the USB driver software.



### CAUTION

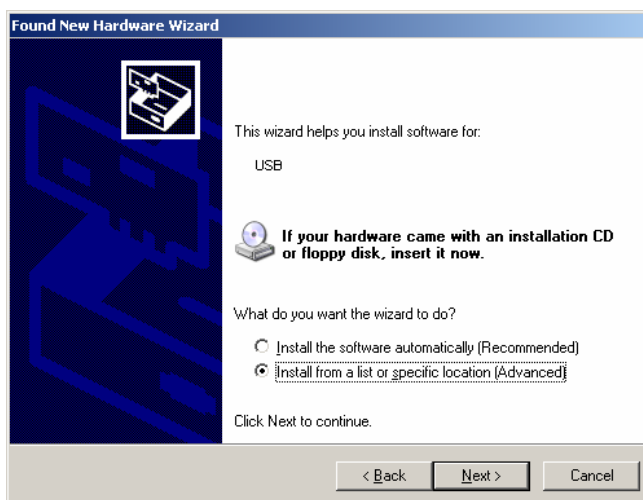
The USB driver software is installed when the PC detects a sequence CPU with USB support.

### ◆ Procedure ◆

- (1) Connect the sequence CPU with USB support to the PC using a USB cable.
- (2) The Found New Hardware wizard is displayed.
- (3) Select [Install from a list or specific location (Advanced)], and click [Next].
- (4) Select [Search for the best driver in these locations], turn on the [Include this location in the search] checkbox, and in the text box enter "<WideField2 installed folder>\Driver". Click [Next].

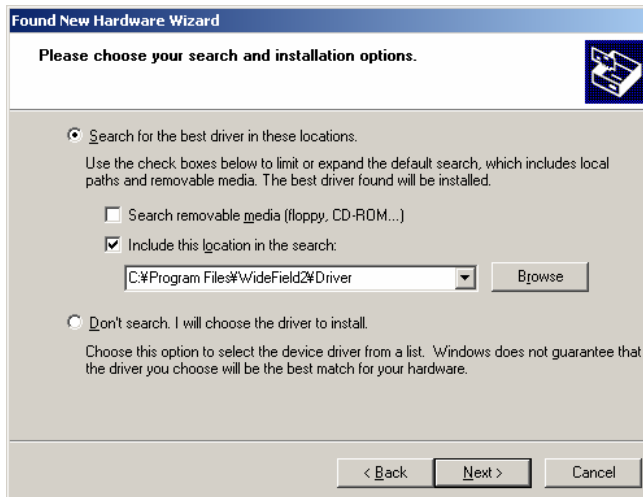
⇒ Installation begins.

- (5) Click [Finish] to exit from installation.



Step (4)

A04\_05.VSD



Step (5)

A04\_06.VSD



### CAUTION

Do not connect the same PC to two or more FA-M3 units using USB cables as only the first connected USB port can be used.

The USB driver of the second and subsequent connected USB ports will not be correctly detected. To rectify the problem, remove and reattach the USB cable.

---

# Revision Information

Document Name : FA-M3 Programming Tool WideField2 Read Me First

Document No. : IM 34M6Q15-11E

<b>Edition</b>	<b>Date</b>	<b>Revised Item</b>
1st	Mar. 2002	New publication
2nd	Jun. 2007	Updated for WideField2 R4 version

---

Written by    PLC International Sales & Marketing Gr.  
                  PLC Product Marketing Dept.  
                  Industrial Automation Systems Business  
                  Yokogawa Electric Corporation

Published by    Yokogawa Electric Corporation  
                  2-9-32 Nakacho, Musashino-shi, Tokyo, 180-8750, JAPAN

Printed by     Kohoku Publishing & Printing Inc.

---

