



User Guide

Stellar Phoenix

Windows Data Recovery

Home 6.0

Overview

Stellar Phoenix Windows Data Recovery - Home edition is a complete solution to recover lost data from your hard disks and removable drives.

In addition, **Stellar Phoenix Windows Data Recovery** provides you with two options using which you can recover your important data. They are as follows:

Drive Recovery - This option allows you to recover files that have been deleted from a volume or removable media by using the deleted file recovery process. It also helps you to recover data from a formatted volume by using 'Advanced Recovery' option. Using this software you can search for a deleted or lost volume in a hard drive and recover data from it. Raw recovery feature allows you to recover data on signature basis from entire hard disk and volumes.

Photo Recovery - You can use this option of Stellar Phoenix Windows Data Recovery to recover lost or deleted image files from existing volumes, hard drives, memory cards, or removable storage devices. It supports recovery of digital camera raw images like Nikon, Canon, Sony and more.

Windows Data Recovery 6.0 is the latest version of windows data recovery software from **Stellar**. Listed below are some of the new and key features of the product.



Stellar Phoenix Windows Data Recovery Main Screen

What's New

- An all-new 'FAT File System' scan engine which gives better scanning results.
- Deleted file recovery in NTFS formatted partitions, using journal entries, which greatly improves the recovery results in NTFS formatted partitions.
- A new and improved scan engine for 25 file formats for better scanning.

Key Features

- Advanced Find option
- Categorization of scanned results
- Preview of files before recovery
- Recovers data from accidentally deleted volumes
- Recovers data from formatted volumes
- Recovers deleted files and folders
- Recovers from hard disk, removable media such as pen drives, memory cards etc.
- Supports 300 or more File types
- Supports FAT, NTFS, and ExFAT file systems
- Supports MS Office XP / 2000 / 2003 / 2007 / 2010
- Supports Windows XP / 2000 / Vista / 7 / 8
- Tabbed view of scanned Tree - Classic List / File List / Masked List
- User can add / edit their file types which makes it more robust

Why Stellar Phoenix Windows Data Recovery?

Stellar Phoenix Windows Data Recovery is a complete solution for all your data loss problems. The powerful scan engine of the software does a thorough scan of the selected storage device, shows a preview of files found during the scanning process and finally saves them to specified destination. A separate option to recover only photos from the storage media is also available.

Recover Deleted Files

Stellar Phoenix Windows Data Recovery recovers deleted files from your computer's drives and/or volumes, or any attached storage device. Scan result shows all the files stored in the selected volume. You can filter deleted files using filter options.

Search and Scan for Lost Volumes from your Hard Disk

Stellar Phoenix Windows Data Recovery can also scan a hard disk to find lost and deleted volumes. After a lost volume is found, it is included in the list of volumes. You can then select it for data recovery. Please note that the found volume will be shown in the list of volumes only until the software is running.

Photo Recovery

Stellar Phoenix Windows Data Recovery has a special option to recover only photos (image files) from a selected volume or hard disk. Click File Types to view the complete list of files that the application can recover.



Tip: *For a high recovery rate, do not save new data in the drive or card that you have formatted, or from which you have deleted photos.*

Supports Recovery from External Storage Devices

Whether you have lost data from your hard disk, pen drive, memory card, or camera memory, **Stellar Phoenix Windows Data Recovery** supports data recovery from all of these storage devices. Memory cards, USB storages devices, Flash Cards, SD Card (Mini SD, Micro SD, and SDHC Card), CF Card, Mini Disks, and all other Windows based hard drives are supported by the application. You have to just attach the external storage device to the system running the recovery software. When the device is recognized, it will be shown in the list of drive volumes, from where you can select it for recovery.

Recover User-defined File Types

A default list of supported file types is included in the software. If you want to include a new file type, **Stellar Phoenix Windows Data Recovery** application allows you to add it to the existing list of supported file types before scanning the volume for recovery

Filtered List of Scanned Files

After scanning selected storage device, the software will show all recoverable files and folders in a 3-pane window. Preview window shows a tree containing all scanned folders, a list of items contained in the selected folder and a preview pane showing the preview of supported file types. You can create a filtered tree that contains only the folders having files according to your defined criteria. Once scanning is complete and found data is populated as a tree, you also have an option to search for specific files in the scanned result.

Installation Procedure

Before installing the software, please ensure that your system meets the following minimum system requirements:

Minimum System Requirements:

- **Processor : Pentium Processors**
- **RAM : 512 MB minimum**
- **Hard Disk : 50 MB**
- **Operating Systems : Windows 8 / 7 / Vista / XP / 2000**


To install the software:

1. Double-click **StellarPhoenixWindowsDataRecovery-Home.exe** file and click **Run** to start the Setup Wizard. **Setup - Stellar Phoenix Windows Data Recovery** dialog box is displayed.
2. Click **Next** to proceed. **License Agreement** dialog box is displayed.
3. Select **I accept the agreement** option in the **License Agreement** dialog box. Click **Next**. **Select Destination Location** dialog box is displayed.
4. Specify a destination in the text box or click **Browse** to select a destination. Click **Next**. **Select Start Menu folder** dialog box is displayed.
5. Specify a destination in the text box or click **Browse** to select a destination. Click **Next**. **Select Additional Tasks** dialog box is displayed.
6. Select the required check boxes for creating desktop icon and quick launch icon of the software. Click **Next**.
7. In the **Ready to Install** dialog box, verify the settings. Click **Back** to make any changes, or click **Install** to install the software.
8. After successful installation of the software, the "**Completing the Stellar Phoenix Windows Data Recovery -Home Setup Wizard**" screen opens. Click **Finish**.

Ordering the Tool

How to order Stellar Phoenix Windows Data Recovery?


You can purchase Stellar Phoenix Windows Data Recovery software online. For pricing details and to place an order, visit <http://www.stellarinfo.com/disk-recovery/windows-data-recovery/buy-now.php>

Alternatively, if you have already downloaded and installed the demo version of the software, then you can click the 'Buy Now' link in the *About* dialog box, or click directly on the  *Buy* button in the tool bar.

Registering the Tool

To register the software


Follow the steps given below to register your copy of **Stellar Phoenix Windows Data Recovery** software:

1. Click **About**  icon. Then, click **Register** button. **Stellar Phoenix** dialog box will appear.
 - If you do not have the registration key, click on '**I do not have the registration key**'. You will be directed to a web site, where you can purchase **Stellar Phoenix Windows Data Recovery** software. Once purchased, the link to download the software and the registration key will be sent to you by mail.
 - If you have a registration key, click '**I have the registration Key**' option, click **OK** and enter '**User Name**' and '**Activation Code**' (as it appears on the back of the CD case or in the mail received after your purchase on the Internet).
2. Click **OK** button. A confirmation message is displayed if a valid key is entered.

How to Update

Stellar Phoenix Update Wizard keeps your copy up-to-date. The wizard runs the update process and automatically checks for updates. You need an active internet connection to check for updates using Update option of the application. Using Update option, you can check for both, latest minor and major versions available online. You can easily download minor versions using the update wizard. However, you need to purchase any major version updates whenever they are available.

To start Stellar Phoenix Update Wizard:

1. Run **Stellar Phoenix Windows Data Recovery** software.
2. On **Stellar Phoenix Windows Data Recovery** main screen, click  icon. Under **General Settings** tab, click **Update Now** button.
3. '**Stellar Phoenix Update Wizard**' window pops up. Click **Next** to proceed.
4. The wizard will start searching for the latest updates and if it finds any new version, a window will pop up indicating the availability an update.
5. Click **Next** and the software will start downloading update files from the server. When the process is complete, the software will updated to the latest version.

Live Update may not happen due to following reasons:

- Internet connection failure
- Unable to download configuration files
- Unable to locate updated files or version
- Unable to locate executable file



Tip: *You need to purchase the major version updates of the software, whenever they are available.*

Stellar Support

Our Technical Support professionals will provide solutions for all your queries related to Stellar Products.

You can either **Call Us** or **Go Online** to our support section at <http://stellarinfo.com/support/>

For **price details** and to **place an order**, click <http://www.stellarinfo.com/disk-recovery/windows-data-recovery/buy-now.php>

Chat Live with an **Online technician** at <http://stellarinfo.com/support/>

Search in our extensive **Knowledge Base** at <http://www.stellarinfo.com/support/kb/>

Submit enquiry at <http://www.stellarinfo.com/support/enquiry.php>

E-mail to Stellar Support at support@stellarinfo.com

Stellar Support Helpline

Monday to Friday [24 Hrs. a day]

USA (Toll free- Pre Sales Queries) +1-877-778-6087

USA (Post Sales Queries) +1-732-584-2700

UK (Europe) +44-203-026-5337

Australia & Asia Pacific +61-280-149-899

Netherlands Pre & Post Sales Support +31-208-111-188

Worldwide +91-124-432-6777

Skype Id stellarsupport

Email Orders orders@stellarinfo.com

Starting the Software

To start Stellar Phoenix Windows Data Recovery, use any one of the following methods:

Click **Start -> Programs -> Stellar Phoenix Windows Data Recovery - Home -> Stellar Phoenix Windows Data Recovery - Home**.

Or,

Click **Stellar Phoenix Windows Data Recovery - Home** desktop icon.

Or,

Click **Stellar Phoenix Windows Data Recovery - Home** in **Quick** launch tool bar.

Supported File Types

Stellar Phoenix Windows Data Recovery supports preview of below mentioned file types. This helps you to verify / preview file (s) before actual recovery.

Acrobat Files

PDF

Archive Files

ARJ, ALZ, ZIP, RAR, CAB

Audio Video Files

RMI, WAV, MPG, WMV, WMA, MIDI, AU, MP3, AVI, ASF, MPEG, MID

Backup Files

BKF

Database Files

MDF, DBF, CSV

Image Files

BMP, WBMP, WMF, EMF, JPEG, JPG, JPE, J2K, JP2, JBG, J2C, JPC, PNG, MNG, JNG, JFIF, DIB, GIF, TIF, TIFF, TGA, PCX, PGX, PNM, PGM, PPM, RAS, X3F, PEF, NEF, KDC, K25, ERF, DNG

Internet files

HTM, HTML, SHTML, SHTM, MHTML, XHTML, XHT, PLG

Miscellaneous files

C, PRG, TEXT, CXX, HPP, XML, CC, HH, ASM, JS, PHP, ASP, LIC, DEF, CSPROJ, VCPROJ, SLN, CSS, DSP, DSW, CS, JAVA, INF, INI, LOG, CGI, JSP, REG, FRM, TXT, CPP, H, BAT

Office documents

DOC, DOT, DOCX, DOTX, XLS, XLT, XLW, XLB, XLSX, XLTX, PPT, PPS, POT, PPTX, PPSX, POTX, RTF



Tip: You can use the context sensitive hex viewer to preview severely corrupt files and file types not supported by previewer of the application.

Main User Interface

Main user interface of **Stellar Phoenix Windows Data Recovery** software is quiet simple, easy to use and effective. Main user interface contains the tool bar and the Data Recovery options - Drive Recovery and Photo Recovery. It also has user-friendly icons of 'Settings', 'About', and 'Help' to quickly access the menus. 'Learn More' links are also there for a quick view of the help manual. A pane is displayed when a volume or hard disk is selected in the application for any operation.



Main User Interface screen

Tabs and Buttons

Classic Tree

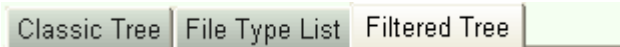
This tab is provided on the Scan Results screen of Stellar Phoenix Windows Data Recovery to view scan result in form of Windows directory structure.

File Type List

This tab is provided on the Scan Results screen of Stellar Phoenix Windows Data Recovery to view scan result categorized as file types.

Filtered Tree

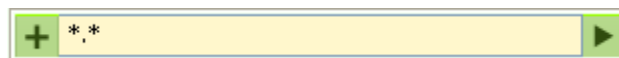
This tab is provided on the Scan Results screen of Stellar Phoenix Windows Data Recovery to view scan result after filtering according to file mask.



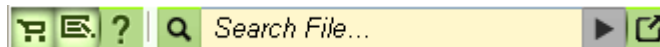
File Type List Tab

Advance Filter Option

This button is provided on the Scan Results screen of Stellar Phoenix Windows Data Recovery to apply file mask and generate Filtered Tree.



Advance Filter Option



Advance Find Option

Some other general buttons/icons that you will encounter while using **Stellar Phoenix Windows Data Recovery** software are as follows:



Click the button to buy the software online.

Buy Now



Click this button to view log report.

View Log



Click this button to open user help guide.

Help



Click to find files of specific file types.

Find Now



Click to enter more advanced search criteria for files.

Advance Find

Option



Recover

This button is provided on the Scan Results window. Click this to start recovery of files.



Back

Click this button to move to main screen from preview window.



About

This button is provided on the main screen. Click this to display information about the application.



Settings

This button is provided on the main screen. Click this button to configure general settings and file types settings.

Recover Data

Data Recovery

Windows Data Recovery provides you different options to recover your data. All recovery methods are different as they apply different scanning processes.

To recover data, you have to first scan the hard disk or volume. Available scanning options are **Normal Scan and Advanced Scan**. After scanning, you can preview scanned files before recovery. You can also filter, find, and select the files you want to recover. You can then recover and save selected files to a destination folder of your choice.

You can also recover data from deleted and lost volumes of your computer's hard disk. **Scan Lost or Deleted Volumes** option will list all volumes that have been deleted from your hard disk. You can perform both Normal Recovery or Advanced Recovery on listed volumes.

- Scan Existing Volumes
- Search Lost or Deleted Volumes
- Photo Recovery
- Preview the Scan Result
- Recovering Files
- Specify Destination to Save Recovered Data
- Find Files
- Filter File List - Set Mask
- Recovery Options

Scan Existing Volumes

You can use Drive Recovery option of the software to scan and recover data from your computer's hard disk, selected volumes of the hard disk, and from any removable storage media device. You can select only one volume at a time for scanning. Almost all data of the volume can be found by performing recovery on selected volume or removable media. **FAT**, **ExFAT**, and **NTFS** file systems are supported by the application.

To scan existing volumes:

1. Run **Stellar Phoenix Windows Data Recovery** software.
2. Click **Drive Recovery** option from main user interface. Application will display **Select Volume to Recover Data** section.
3. In '**Select Volume to Recover Data**' section, all logical volumes that exists in hard disk and all removable media devices will be listed along with volume details. Select the volume from which you want to recover data.
4. Click **Settings** in the tool bar to configure settings.
5. In the flying pane, click any one of the following recovery options:
 - **Normal Recovery:** This scan is fastest of all the scan processes and is highly recommended. This option will list both existing and deleted files.
 - **Advanced Recovery:** Choose this to recover data from a drive formatted from



Scan existing volume screen

NTFS to **FAT** system, or
vice versa.

Search Lost or Deleted Volumes

Stellar Phoenix Windows Data Recovery software allows you to search and recover data from lost and deleted volumes of a hard disk. You should use this option to recover data from an accidentally deleted volume. This option will search and list all the deleted and lost volumes in the hard disk along with existing volumes.

To recover data from deleted volumes of a hard disk:

1. Run **Stellar Phoenix Windows Data Recovery** software.
2. Click '**Click Here to Search Lost Volumes**' drop down link in the main screen. **Select Hard Drive to Search Lost Volumes** section is displayed.
3. In '**Select Hard Drive to Search Lost Volumes**' section, all physical drives connected to the computer are listed with details. Select drive to be scanned for lost or deleted volumes.
4. In the flying pane, select scan type:
 - **Quick:** This scan is fast and recommended.
 - **Deep:** This scan is slower than Quick scan but gives better results.
5. Click **Search Lost Volume** button. A scan for lost or deleted volumes will be performed in the selected disk. You can minimize the application window by clicking on the minimize button of the application.
6. Any 'lost volume' detected, will



Search lost or deleted volumes screen

be listed in the **Select Volume to Recover Data** list section. Now, you can select the 'found lost volume' for scanning and recovery.

Photo Recovery

Photo Recovery option of the software will scan selected volumes, removable storage devices, or external hard disks for photos or image files only. This option scans and recovers almost all image files from the selected volume, removable media, or hard disk. For this option, **FAT**, **ExFAT**, and **NTFS** file systems are supported by the application.

To scan volume or hard disk for photo recovery:

1. Run **Stellar Phoenix Windows Data Recovery** software.
2. On the application main screen, in '**Data Recovery**' tab, click **Photo Recovery** option. Application will list all volumes and hard drives attached to the computer.
3. In '**Select Volume to Search Photos**' section, all logical volumes that exists in hard disk and all the removable media are listed with the volume details. In '**Select Hard Drive to Search Photos**' section, all attached hard drives are listed. Select the 'volume' or 'hard drive' from which you want to recover photos.
4. In flying pane, click **File Type** option to select, add, edit or remove a file type for scanning.
5. Click **Scan Now** button. A scan for photo files will be performed on the selected volume.



Photo Recovery screen



Tip: Option to save scan

*information is not available
for Photo Recovery.*

Preview Scan Result

Stellar Phoenix Windows Data Recovery shows the preview of the files and folders present in the scanned physical volume or the removable media. All files and folders that are found in the scanned volume or removable media are shown in a three pane structure. The three panes are the left, top-right, and the bottom-right pane.

- In the left-pane, a tree structure according to folders is created.
- Top right-pane shows preview of file that are supported by the software.
- In bottom-right pane, all files and folders that are in the selected folder in the tree view are listed.

To preview a file:

1. Click a tab (Classic Tree, File Type List, or Filtered Tree) in the left pane.

- **Classic Tree:** In this view, files/folders are listed as they are found in the hard disk. To see Classic Tree preview, click Classic Tree tab in preview window.

- **File Type List** (not available in Photo Recovery): In this view, files/folders are listed according to their type such as Document, Audio, Video, Archive, etc. To see File Type List preview, click 'File Type List' Tree tab in preview window.

- **Filtered Tree** (not available in Photo Recovery): You can see list of file type according to your preference in this preview. Click Filtered Tree tab to view the filtered list.



Preview Scan Result screen



Preview Image Files/Photos screen

2. Click a folder in the left pane tree structure to list files of that folder in the bottom right pane.

3. Double-click the folder to move deeper into the folder.

4. Click a file in the bottom-right pane to preview the file. Only supported files can be previewed.

5. To view files in binary format, right-click the file and select

Show as Hex.

6. You can also rename the file before recovery. Right-click the file and select **Rename** to rename it.

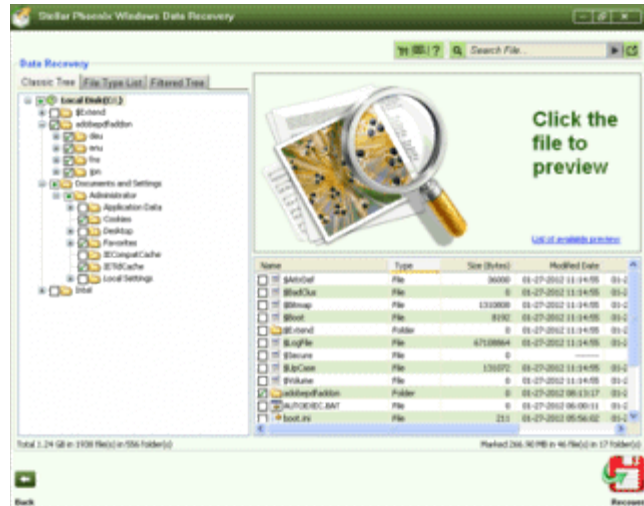
Recovering Files

Stellar Phoenix Windows Data Recovery can recover all files of supported file formats. You can save files and folders listed in preview at preferred location. **Photo Recovery** option of the application allows recovery of images only.

To recover lost files:

1. Select the files and folders you want to recover. You can recover all files or individual files at preferred location. In addition, you can narrow the search result with the **Filtered Tree** option (not available in **Photo Recovery** option). Or, you can select only specific type of files to view or recover.

- **To select all files**
 - Check the root node and then click **Recover**.
- **To select individual files**
 1. Click a folder in the left pane to view files stored in it.
 2. Check the files in the file list pane, and then click **Recover**.
- **To recover individual file**
 - Right-Click the file in the file-list and select **Recover** option.



Preview Scan Result screen


To find files according to a search criteria:

- Use the Set File Mask option in **Filtered Tree** (not available in Photo Recovery), or Find Files option.

To recover selected folders and files and folders included in them:

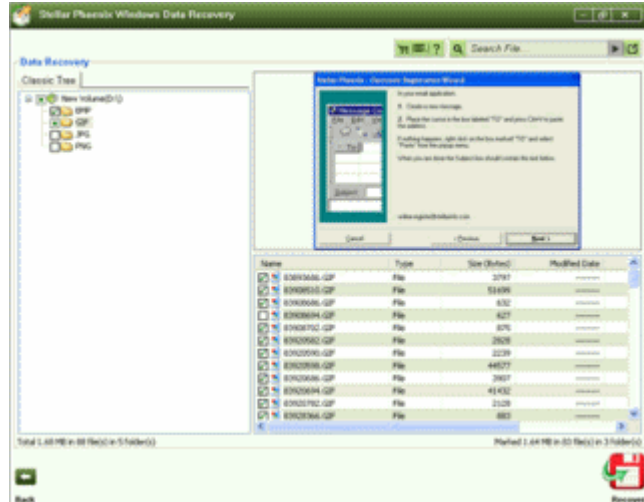
- Check the folder in the left pane, and then click **Recover**.

To recover only files of specific category:

- Click **File Type List** tab (not available in Photo Recovery). Check the **File Types** category folders as per your choice. The files of the selected '**file types folders**' will be listed in the file list pane. You can select the individual files in the list.
- You can view the log report of the executed process for analysis.
- Click **Recover** .

2. A **Select Destination** dialog box is displayed. Specify the destination and choose the options as per requirement.
3. Click **OK** to start save process. If the destination files have same names then you can overwrite, rename or skip. Choose as per the case.

The selected files will be saved at the specified location. Navigate to the destination to view files.



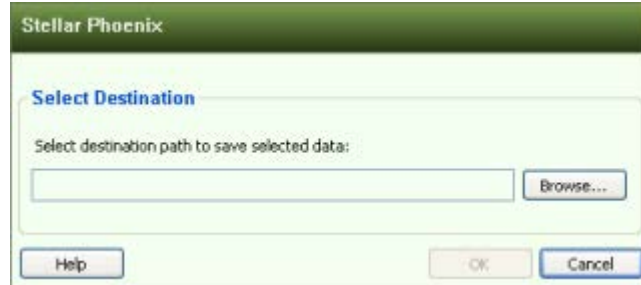
Preview Image Files/Photos screen

Specify Destination to Save Recovered Data

You can save recovered files to a location of your choice.

To save recovered files to a specific location, follow the steps given below:

1. Run **Stellar Phoenix Windows Data Recovery** software.
2. Select a volume or hard disk to recover your data.
3. Click **Search Lost Volume** (in case, you select a hard drive to search for lost volumes), or click **Scan Now** (in case, you select a volume).
4. Click **Recover** to select destination to save the recovered files.
5. In '**Select Destination**' dialog box, click **Browse** and browse to the location where you want to save the files.
6. Click **OK** twice.




Select Destination dialog box






Browse For Folder dialog box

Find Files

You can search files in the trees in the left-pane shown after scanning process. If you want to view or recover specific files from the scan result you can use **Find** option. This provides you various options for searching required files.

To search files: 

- In the **Search File** box, type few or all characters of file name(s) or file type(s) separated by semi colon (;). Click the **Find**  button.
- Click **Search Options**  button. In **Find** screen, type the few or all characters of file name (s) or file type (s) separated by semi colon (;) in the **Enter file type(s) delimited by semi-colons** text box. Check the **Deleted File**, **Match Case**, and **Existing Files** options as per requirement. Click **Search Now**.

The first file matching the criteria is highlighted in the file list. Press **F3** or again click on the  **Find** button to move to next file matching the criteria.

Advanced Options

Advanced option in **Find** dialog box enables you to search files according to the more advance options like date criteria and size of file.


- **Size:** You can define size of file. You have two option for size, either the file should not exceed the defined size or should have at least the defined size.
- **Date:** Date search provides you three options- Last Access Date, Last Modified Date and Created Date for searching required file. Select **Last Access Date** to search file according to the last accessed date. Select **Last Modified Date** to search file according to the last modified date. Select **Created Date** to search file according to the creation date of file. In addition, you can specify number of days, number of months



Find Files dialog box

or time interval for any of the selected date option.



To search files by using advanced options:

1. Click **Search Options**  button.
In the **Find** screen, click **Advanced**.
2. Check and specify either or both of the **Size** and **Date** options.
3. Click **Search Now**. The file, if found, will be highlighted in the file list. Press **F3** button to move to next file matching the search criteria.

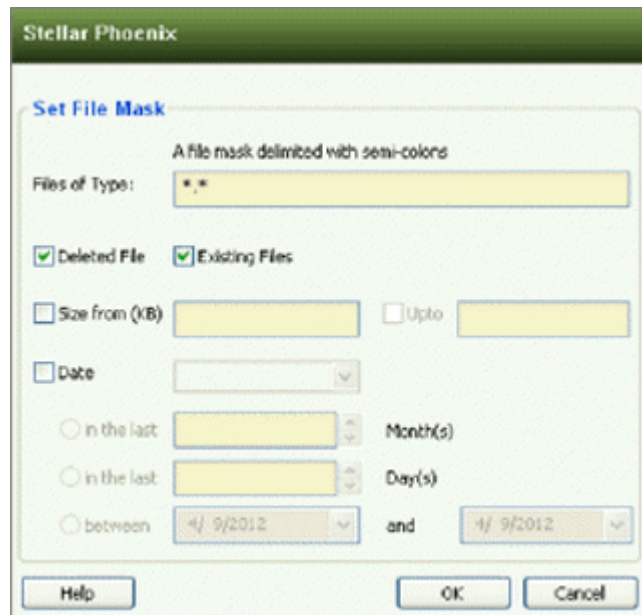
Filter File List - Set Mask

Filter File List is used to generate **Filtered Tree** view in the left pane. **Filter File List** feature provides you with many options for creating file masks to filter the scan result.

To create Filtered tree:

1. In '**Search Result**' window, click on **Filtered Tree** tab in the left pane.
2. In the **Filter** option, type the file type(s) separated by semi colon (;). Click the **Filter**  button.
3. Or, use **Set File Mask** option dialog box to filter files according to the more advance options like date criteria and size of file. Click  button in the '**Filter**' box.

- In the **Set File Mask** screen, type the file type(s) separated by semi colon (;) in the **File of type(s)** text box. Check the **Deleted File** and **Existing Files** options as per requirement.
- **Size:** You can define size limit of filtered files. Define the lower limit of size in **Size from (KB)** text box. Select **Upto** check box if you want to define the upper limit of file size and then specify the size in KB.
- **Date:** Date search provides you three options- **Last Access Date**, **Last Modified Date** or **Created Date** for searching required file. Select **Last Access Date** to search file according to the last accessed date. Select **Last Modified Date** to search file according to the last modified date. Select **Created Date** to search file according to the creation date of file. In addition, you can specify number of days, number of months or time interval for any of the selected date option.



File Mask options

4. Click **OK** to generate the Filtered Tree.

Recovery Options

Stellar Phoenix Windows Data Recovery provides you with different options to recover data from your storage devices. **Normal Recovery** and **Advanced Recovery** are the two recovery methods available in this software. Both methods are different as they apply different scanning processes.

- **Normal Recovery**
- **Advanced Recovery**

Normal Recovery

Normal Recovery option of **Windows Data Recovery** software can perform a quick scan on selected existing volumes, lost volumes, and on removable media. You can select only one volume at a time for normal scan. This scan method is fast and efficient. You will find almost all data by performing a normal recovery on selected volume or removable media.

Advanced Recovery

You can recover data from a formatted volume or removable media by using '**Advanced Recovery**' option of **Stellar Phoenix Windows Data Recovery**. If a volume or removable media is formatted and all data is lost from that drive, you can recover that data performing this type of recovery. In addition, you can scan either a FAT, NTFS, or ExFAT volume.

View Log Report

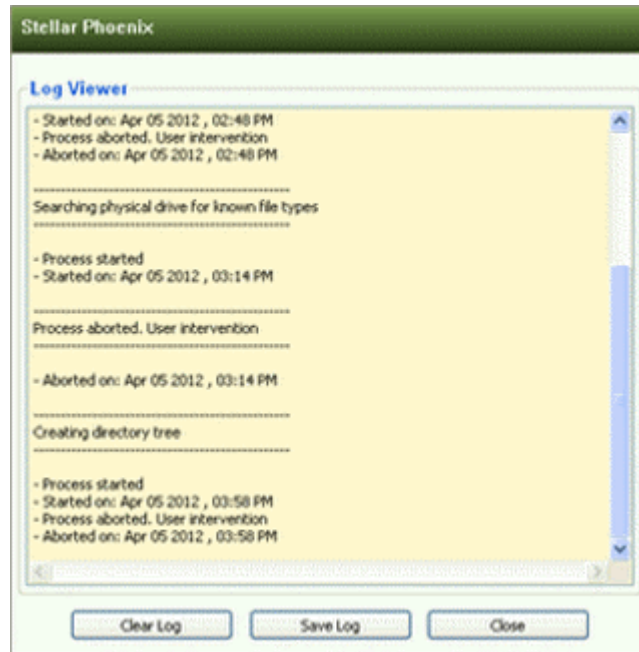
You can view, clear, and save log report of processes that are processed in **Stellar Phoenix Windows Data Recovery**. Log report can be viewed in the **'Scan Result'** window.

To view log report

- On the application tool bar, click **Log Report**.

To save log report

- On the application tool bar, click **Log Report**.
- Click **Save Log**.
- In the **Save As** dialog box, specify the destination to save log file. Click **Save**. Note that, a warning message to save log report is displayed, at the time of closing the application.



Log Viewer screen


To clear log report

- On the application tool bar, click **Log Report**.
- Click **Clear Log**.

Configuration Settings

You can change settings of the **Stellar Phoenix Windows Data Recovery** software before scanning.

To configure Stellar Phoenix Windows Data Recovery software:

- Run **Stellar Phoenix Windows Data Recovery**. Click . Under **General Settings** tab, configure general options:
 - **Check for 'Latest Updates' at startup:** Check this check box to receive latest updates for the software. You can also click [Update Now](#) to launch **Stellar Phoenix update wizard**. This wizard automatically detects new updates available for the software and download available updates.
 - **Log Settings:** Check the **Save log before closing application** check box to automatically save log of processes. Click **Browse** to specify the destination where log files should be saved.
 - **Scan Settings:** Choose it to avoid signature search in **Advance Scan**.
- Click **Add File Types** tab to select, add, remove, or edit file type. This will become the default settings.

Selecting File Type

File types give information about the type of file such as video, audio and its extension. You can select file types while performing signature search such that, scanning process should search only for the specified file types.

File types are listed in the **Add File Types** tab of **Settings** screen and **Photo/Image File List** screen in the **Photo Recovery**. The '**Software Name**' column shows the software that created the files having the specified file type, '**File Extension**' shows the extension of the file and size (KB) shows the maximum allowed size of files having the specified file type. The file types are categorized according to groups. File Type (s) includes every file type available in different file groups. Different groups are Application, Graphic, Pictures & Raster Images, Archive, Audio, video & Animation, Mails, Database, Office Documents, Internet, and Miscellaneous.

Photo/Image File List screen in the **Photo Recovery** shows only the file types of supported image files.

To select file types from file list for scanning:

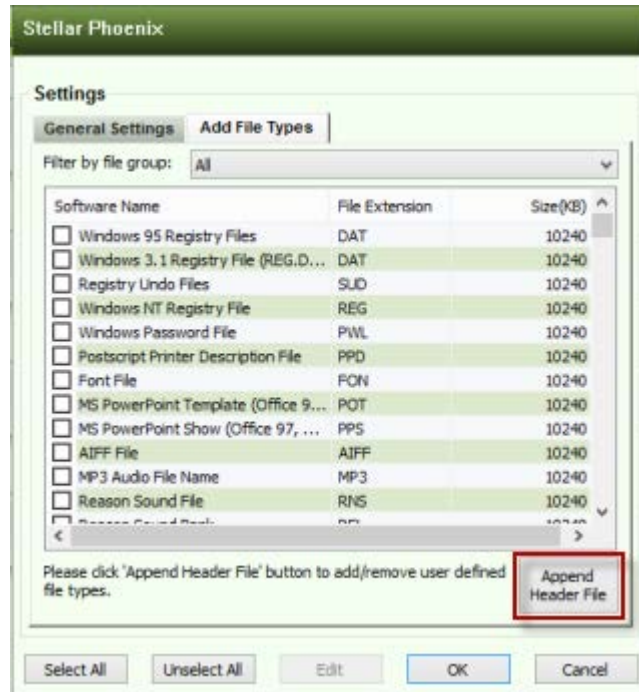
1. Select the required file types.
2. Click **OK**.
3. You can click **Select All** or **Unselect All** button to select or unselect all the file types.

Adding File Type

You can add file type to the list of File Types while performing signature search. In case, the file you are searching is not available in the file list you can add the file by specifying the software name, size, header information, and file extension.

To add a file type:

1. In the '**File List**' screen, click **Append Header File**.
2. In the '**Add New Header**' screen, click **Add**.
3. In the '**Add/Edit Header File**' screen, provide the values:
 - **Software Name:** Type name of the software or file.
 - **Group:** Select the group under which new file type will be included.
 - **File Extension:** Type the file extension.
 - **Header (in hexadecimal):** Type the header value.
 - **At Offset (in decimal):** Type the offset value.
4. Click **OK**.



Append Header File screen

Editing File Type

You can also edit an existing file type or newly added file type. You can change every setting of the file type.

To edit a file type:

1. Select the file type that needs to be edited.
2. Click **Edit**. In the '**Add/Edit Header File**' screen, edit the following values:
 - **Software Name:** Type name of the software or file.
 - **Group:** Select the group under which new file type will be included.
 - **File Extension:** Type the file extension.
 - **Header (in hexadecimal):** Type the header value.
 - **At Offset (in decimal):** Type the offset value.
3. Click **OK**.



Add/Edit File Type screen



Tip: You can also edit a file type from **Add New Header** screen.

Removing File Type

You can remove user-defined file types in **Stellar Phoenix Windows Data Recovery** software.

To remove user-defined file types:

1. In 'File List' screen, click **Append Header File**.
2. In 'Add New Header' screen, select a file type and then click **Remove**. Repeat the procedure to remove other file types from the header file list.

Possible Errors While Using Stellar Phoenix Windows Data Recovery

1. Can I repair images using the software that are not opening after the recovery?

The software is a recovery application and cannot repair any corrupted images. The data will be recovered in the same form as it available in the media.

2. I am not able to see my camera in the software. What am I doing wrong?

There is a possibility that your camera doesn't support the access to memory card as a disk drive. You need to attach the memory card through a card reader for accessing the memory card. This will enable you to scan your camera memory card.

3. When I am trying to recover the data, I get error "*Source and destination are same.*" What shall I do?

You are trying to save the data on the same media from where you are recovering it. Please choose another location to save the files and software will not give you this error anymore.

FAQs

1. Are only audio, video, documents and photos recovered by this software?

No, all the files and folders in the selected volume can be recovered.

2. Can I recover a specific file by help of this software?

Yes, select a file and click Recover button. Or, you can right-click the file and select Recover button.

3. I have formatted a volume. Can I recover the files in it?

Yes, select the formatted volume and then go for 'Advanced Recovery' option to recover formatted data.

4. I have deleted a volume. Can I recover the files in it?

Yes, choose the 'Search Lost or Deleted Volume' option in the application to find the lost or deleted volumes. Then continue with the scan option to recover data from the deleted volumes.

5. What is normal scan and advance scan?

Normal scan is a faster scanning option. If the files are not recovered still, then you can use advance scan option. Normal scan is a bit slower but results are better than advance scan.

6. From where I can buy the product? Is there any demo option available?

You can buy the product from [our website](#). You can download the demo version from here. Demo version will show the preview of the files, but the save process will be done only after the demo version is registered.

7. Can I recover data from my ExFAT partition?

Yes, you can recover data from ExFAT partition. Stellar Phoenix Windows Data recovery software supports FAT, NTFS, and ExFAT file systems.

8. How to find only a particular file type and recover them?

Use the find option in the preview window and search the files according to your criteria. Select the file (s) and click Recover. The files are saved at the given destination.

9. Can the software recover only images from a removable storage device?

Yes, you can recover only photos from removable devices like pen drive, memory card etc.
Use the Photo Recovery option to search the files according to your criteria.

Legal Notice

Copyright

Stellar Phoenix Windows Data Recovery software, accompanied user manual and documentation are copyright of Stellar Information Systems Ltd., with all rights reserved. Under the copyright laws, this user manual cannot be reproduced in any form without the prior written permission of Stellar Information Systems Ltd. No Patent Liability is assumed, however, with respect to the use of the information contained herein.

Copyright © Stellar Information Systems Ltd. All rights reserved.

Disclaimer

The Information contained in this manual, including but not limited to any product specifications, is subject to change without notice.

STELLAR INFORMATION SYSTEMS LTD PROVIDES NO WARRANTY WITH REGARD TO THIS MANUAL OR ANY OTHER INFORMATION CONTAINED HEREIN AND HEREBY EXPRESSLY DISCLAIMS ANY IMPLIED WARRANTIES OF MERCHANTABILITY OR FITNESS FOR ANY PARTICULAR PURPOSE WITH REGARD TO ANY OF THE FOREGOING STELLAR INFORMATION SYSTEMS LTD ASSUMES NO LIABILITY FOR ANY DAMAGES INCURRED DIRECTLY OR INDIRECTLY FROM ANY TECHNICAL OR TYPOGRAPHICAL ERRORS OR OMISSIONS CONTAINED HEREIN OR FOR DISCREPANCIES BETWEEN THE PRODUCT AND THE MANUAL. IN NO EVENT SHALL STELLAR INFORMATION SYSTEMS LTD, BE LIABLE FOR ANY INCIDENTAL, CONSEQUENTIAL SPECIAL, OR EXEMPLARY DAMAGES, WHETHER BASED ON TORT, CONTRACT OR OTHERWISE, ARISING OUT OF OR IN CONNECTION WITH THIS MANUAL OR ANY OTHER INFORMATION CONTAINED HEREIN OR THE USE THEREOF.

Trademarks

Stellar Phoenix Windows Data Recovery® is a registered trademark of Stellar Information Systems Ltd.

Windows XP®, Windows Vista®, Windows 7®, and Windows 8® are registered trademarks of Microsoft® Corporation Inc.

All Trademarks Acknowledged.

All other brands and product names are trademarks or registered trademarks of their respective companies.

License Agreement

Stellar Phoenix Windows Data Recovery

Copyright © Stellar Information Systems Ltd. INDIA

www.stellarinfo.com

All rights reserved.

All product names mentioned herein are the trademarks of their respective owners.

This license applies to the standard-licensed version of Stellar Phoenix Windows Data Recovery.

Your Agreement to this License

You should carefully read the following terms and conditions before using, installing or distributing this software, unless you have a different license agreement signed by Stellar Information Systems Ltd.

If you do not agree to all of the terms and conditions of this License then do not copy, install, distribute or use any copy of Stellar Phoenix Windows Data Recovery with which this License is included, you may return the complete package unused without requesting an activation key within 30 days after purchase for a full refund of your payment.

The terms and conditions of this License describe the permitted use and users of each Licensed Copy of Stellar Phoenix Windows Data Recovery. For purposes of this License, if you have a valid single-user license, you have the right to use a single Licensed Copy of Stellar Phoenix Windows Data Recovery. If you or your organization has a valid multi-user license, then you or your organization has the right to use up to a number of Licensed Copies of Stellar Phoenix Windows Data Recovery equal to the number of copies indicated in the documents issued by Stellar when granting the license.

Scope of License

Each Licensed Copy of Stellar Phoenix Windows Data Recovery may either be used by a single person or used non-simultaneously by multiple people who use the software personally installed on a single workstation. This is not a concurrent use license.

All rights of any kind in Stellar Phoenix Windows Data Recovery, which are not expressly granted in this license, are entirely and exclusively reserved to and by Stellar Information Systems Ltd. You may not rent, lease, modify, translate, reverse engineer, decompile, disassemble or create derivative works based on Stellar Phoenix Windows Data Recovery nor permit anyone else to do so. You may not make access to Stellar Phoenix Windows Data Recovery available to others in

connection with a service bureau, application service provider or similar business nor permit anyone else to do so.

Warranty Disclaimers and Liability Limitations

Stellar Phoenix Windows Data Recovery and all accompanying software, files, data and materials are distributed and provided AS IS and with no warranties of any kind, whether expressed or implied. You acknowledge that good data processing procedure dictates that any program including Stellar Phoenix Windows Data Recovery must be thoroughly tested with non-critical data before there is any reliance on it and you hereby assume the entire risk of all use of the copies of Stellar Phoenix Windows Data Recovery covered by this License. This disclaimer of warranty constitutes an essential part of this License. In addition, in no event does Stellar authorize you or anyone else to use Stellar Phoenix Windows Data Recovery in applications or systems where its failure to perform can reasonably be expected to result in a significant physical injury or in loss of life. Any such use is entirely at your own risk and you agree to hold Stellar harmless from any and all claims or losses relating to such unauthorized use.

In no event shall Stellar Information Systems Limited or its suppliers be liable for any special, incidental, indirect, or consequential damages whatsoever (including, without limitation, damages for loss of business profits, business interruption, loss of business information, or any other pecuniary loss) arising out of the use of or inability to use the software product or the provision of or failure to provide support services, even if Stellar Information Systems Limited has been advised of the possibility of such damages. In any case, Stellar Information Systems Limited's entire liability under any provision shall be limited to the amount actually paid by you for the software product.

General

This License is the complete statement of the agreement between the parties on the subject matter and merges and supersedes all other or prior understandings, purchase orders, agreements and arrangements. This License shall be governed by the laws of the State of Delhi, India. Exclusive jurisdiction and venue for all matters relating to this License shall be in courts and fora located in the State of Delhi, India and you consent to such jurisdiction and venue. There are no third party beneficiaries of any promises, obligations or representations made by Stellar herein. Any waiver by Stellar of any violation of this License by you shall not constitute nor contribute to a waiver by Stellar of any other or future violation of the same provision or any other provision of this License.

Copyright © Stellar Information Systems Ltd. All rights reserved.

About Stellar

Stellar Information Systems Ltd. is a trusted name in the field of Data Recovery and Data Protection Software for more than a decade.

We provide the widest range of Data Recovery Products. Our range includes Data Recovery Software for almost all Operating Systems and File Systems.

Product line:

Data Recovery

A widest range of data recovery software that helps you recover your valued data lost after accidental format, virus problems, software malfunction, file/directory deletion, or even sabotage!.

[More Info >>](#)

File Recovery

The most comprehensive range of file undelete and unerase software for Windows and MS office repair tools. [More Info >>](#)

Email Recovery

A wide range of mail recovery, mail repair and mail conversion applications for Outlook, Outlook Express and Exchange useful in instances of data loss due to damages and corruption of Email.

[More Info >>](#)

Data Protection

A wide range of Prevent Data Loss, Data backup and Hard Drive Monitoring Applications to ensure complete data protection against hard drive crash. [More Info >>](#)

For more information about us, please visit www.stellarinfo.com
