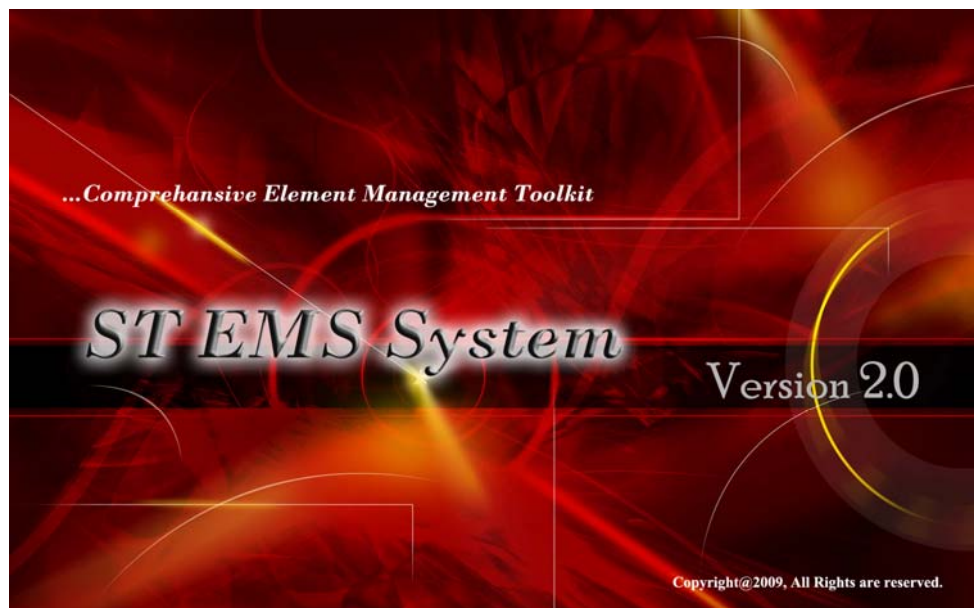




EMS System For IP DSLAM

User Manual



Document #: ST-208004003 Issue3.0

Date: May 6, 2010

Copyright@2009 by Shanghai Sino-Telecom Communication Technology Co. Ltd.

All Rights Reserved

No part of this document may be reproduced or transmitted in any form or by any means without prior written consent of Shanghai Sino-Telecom Communication Technology Co., Ltd.

Table of Contents

Table of Contents	3
1. EMS System Installation.....	5
1.1 Prerequisite Information.....	5
1.2 Installing EMS.....	5
1.3 Un-installation of EMS	9
2. EMS Introduction.....	10
2.1 EMS Server	10
2.1.1 Enter/Exit EMS Server Interface	10
2.1.2 Run/Stop EMS Server.....	11
2.1.3 Initialize EMS Server.....	13
2.1.4 Minimum/Maximum EMS server window	13
2.2 EMS Client.....	13
2.2.1 Login EMS Client.....	13
2.2.2 Concepts in configuring EMS Client.....	15
2.2.3 Node/Map/Root Settings.....	15
2.2.4 User Management	21
2.2.5 ADSL Profile Settings	25
2.2.6 Alarm Profile Settings.....	26
2.2.7 Alarm Records	27
3. Element Configuration & Management.....	29
3.1 Prerequisite.....	29
3.2 Introduction to DSLAM5008/5016/5024 Chassis View	29
3.2.1 Port Management	30
3.2.2 System Management.....	31
3.3 Introduction to DSLAM5048 Chassis View.....	错误! 未定义书签。
3.3.1 Add SNMP for DSLAM5048	38
3.3.2 Introduction to DSLAM5048 Chassis View	38
3.4 DSL Configuration	39
3.4.1 Refresh/Open/Close ADSL port.....	39
3.4.2 ADSL Status Inquiring.....	39
3.4.3 ADSL Port configuration	40
3.4.4 ADSL Alarm Configuration.....	41
3.4.5 ADSL Bridge (EOA)	41
3.4.6 Ethernet Port Configuration.....	44
3.4.7 VLAN	45
3.4.8 Batch Config	47

3.4.9	System Information.....	48
3.4.10	MAC forwarding table (FDB)	49
3.4.11	Subscriber Information	49

1. EMS System Installation

This chapter describes how to install/Uninstall EMS suite.

1.1 Prerequisite Information

This section describes the recommended hardware configuration required to enable EMS server and client applications on various size networks.

Table 1-1 outlines the minimum recommended client hardware configuration

Table 1-1 Hardware requirements for computer

Configures	Hardware Description
Hard-disk Space	150MB and above
Memory	256MB and above
Operation System	Windows 2000, Windows XP ,Windows Vista etc.
Displaying	1024×768 pixels

1.2 Installing EMS

- 1) Open EMS installation Suite and double click **EMS2.1_en_Setup.exe** file to start the EMS installation process. When the welcome window of EMS appears as shown in Figure 1-1, click *Next* to continue.

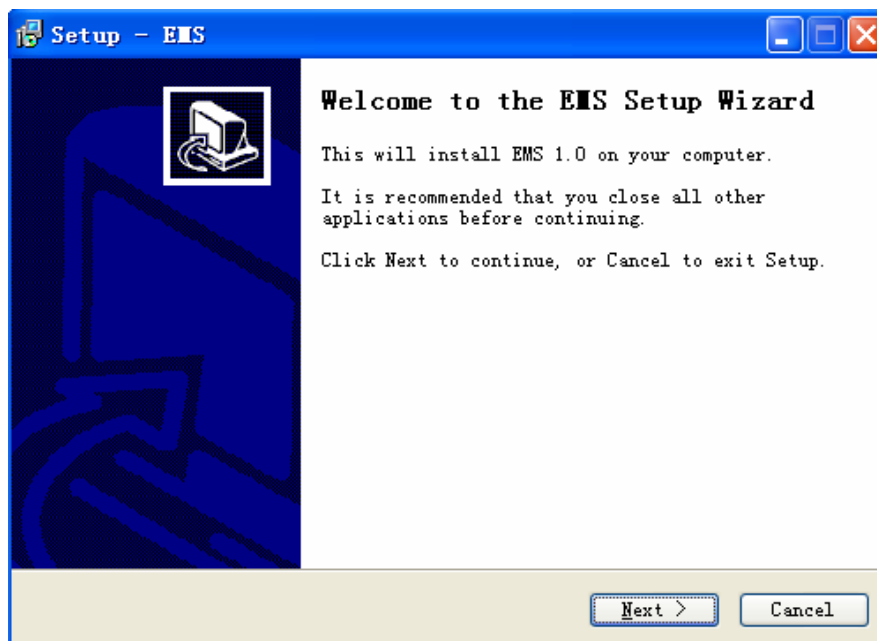


Figure 1-1 Welcome window of EMS

- 2) When the Destination Location window appears as shown in Figure 1-2, click **Browse** button to change the installation destination directory or simply use the default setting “*c:\program files\EMS*”. Then click **Next** to continue.

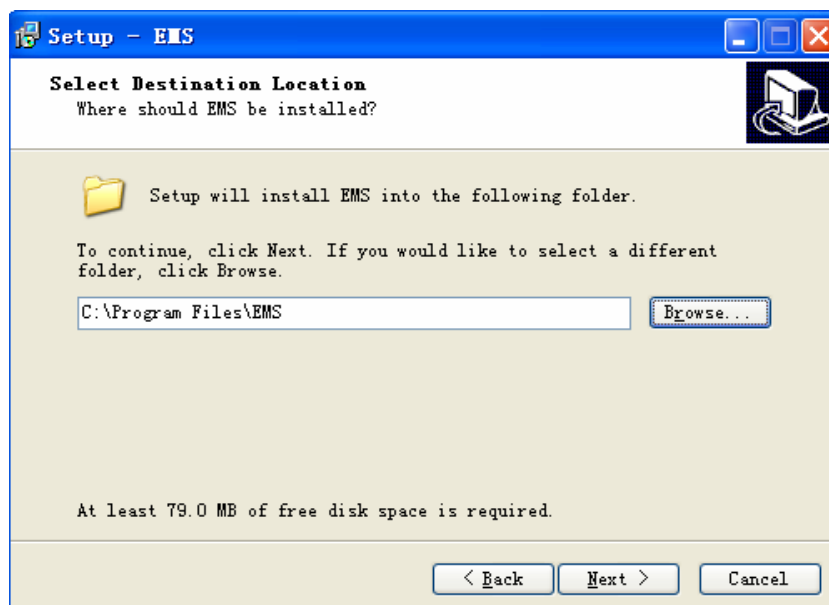


Figure 1-2 Select the destination directory

- 3) When the start menu folder window appears as shown in Figure 1-3, please click **Browse** to change the start menu folder, or click **Next** to continue.



Figure 1-3 Start Menu Folder Window

- 4) When the additional tasks window appears as shown in Figure 1-4, click *create a desktop icon* to create a short cutting on the desktop, or click *Next* to continue.

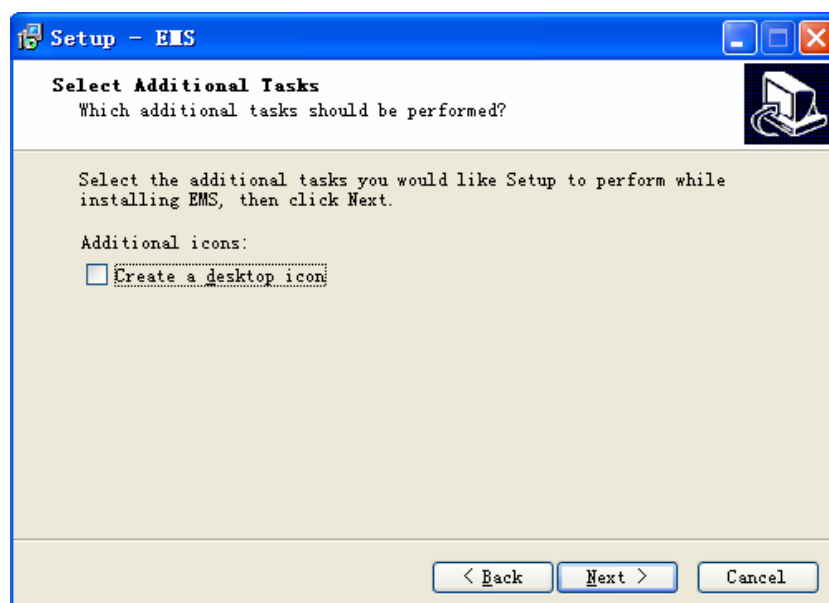


Figure 1-4 Create a desktop icon

- 5) When the ready to install window appears as shown in Figure 1-5, you can confirm your current settings, if you are satisfied with the settings, click *Install* to start setup.

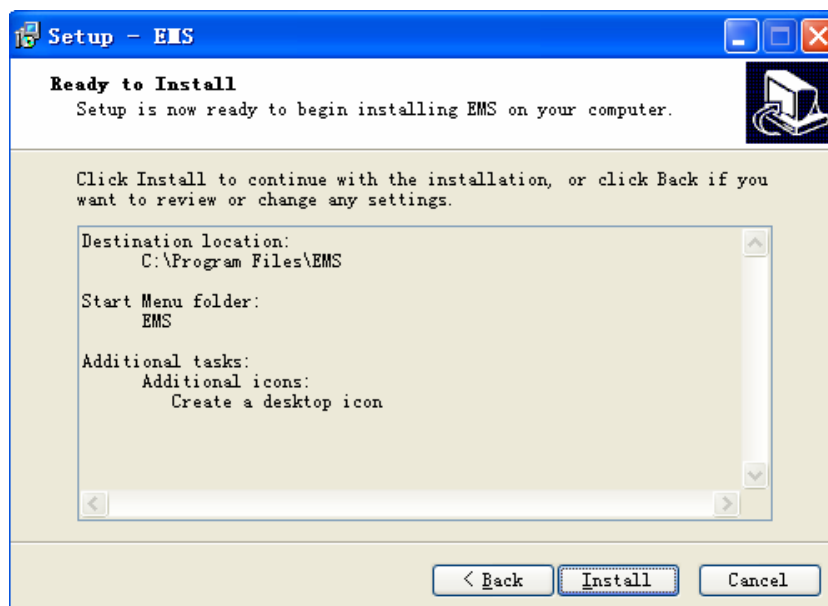


Figure 1-5 Ready to Install

- 6) When Installing Process Status window appears as shown in Figure 1-6, the installation process is now in progress. This window displays a bar indicating the percentage of completion for the current installation. In addition, the names of the files being installed appear above the bar until the installation is complete.

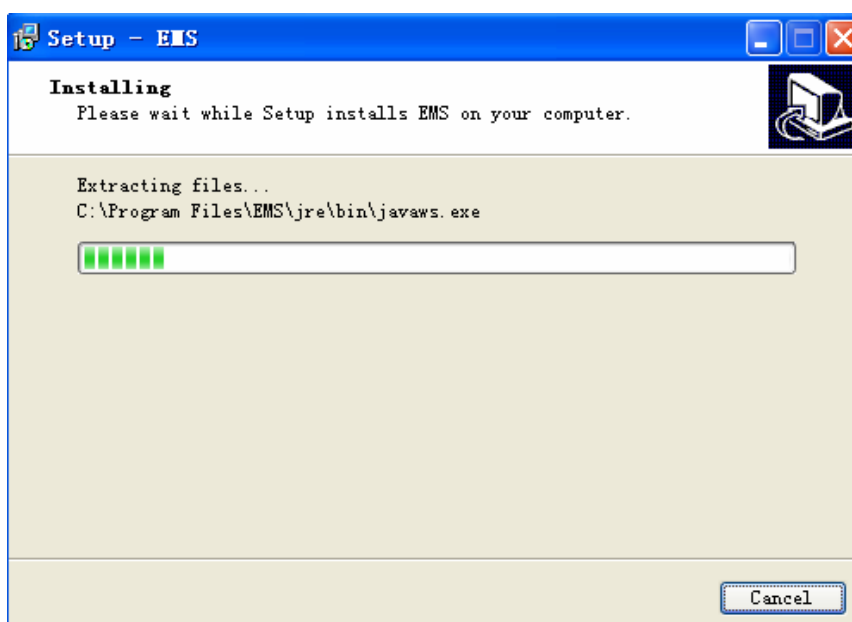


Figure 1-6 EMS is Installing

- 7) At the end of installing process, the “Finish” windows appears as shown in Figure 1-7, simply click **Finish** to complete the EMS Setup. Now the installation of EMS software is completed.



Figure 1-7 Completing EMS Setup Wizard

1.3 Un-installation of EMS

To uninstall EMS system, you should do:

1) Start uninstall wizard in the following path:

Start> Program Files>STEMS>Uninstall STEMS.

2) Click ***Yes*** to uninstall EMS as shown in Figure 1-1.

3) Once you uninstall EMS system, most of setup files are removed automatically, while a couple of files must be deleted manually.

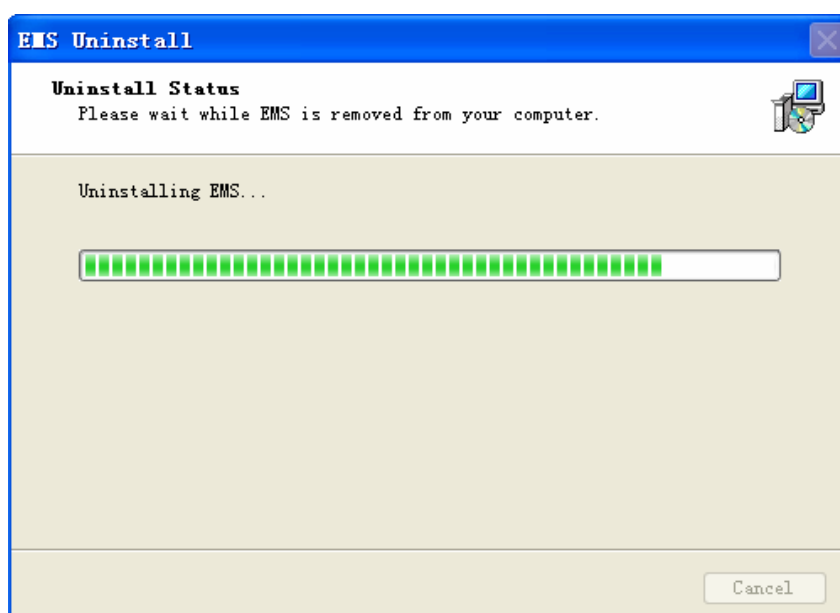


Figure 1-1 Uninstalling of EMS system

2. EMS Introduction

This chapter introduces the functions and interfaces in EMS system and help the users better understand EMS.

This chapter explains how to use object trees and create maps that provide a graphical representation of nodes and maps in an EMS managed network. You can also create maps between nodes on two different nodes.

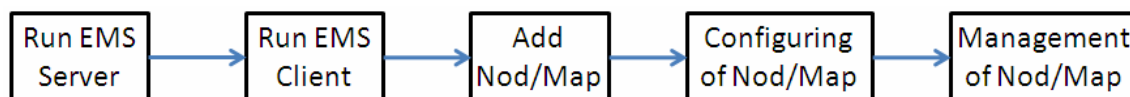
When an EMS node, map, or root is added, the object is displayed using graphical indicators. New and outstanding alarms are also shown through graphical and color indicators.

A graphical view of an EMS node panel can also be displayed from a map. With a panel displayed, you can find more details about cards in the device and view and modify card-specific configurations.

2.1 EMS Server

The major function of EMS sever is to save database, inquire the status of remote network elements, deal with faults and alarms, and represent as SNMP agent etc.

The operation process of EMS server is drawn in the following blocks.



2.1.1 Enter/Exit EMS Server Interface

► Enter EMS server Interface

To enter EMS server interface, you should go this path:

Start> Program Files>EMS>EMS Server, or click directly on EMS Server icon on the desktop. When start EMS server, you will see EMS server window as shown in Figure 2-1.

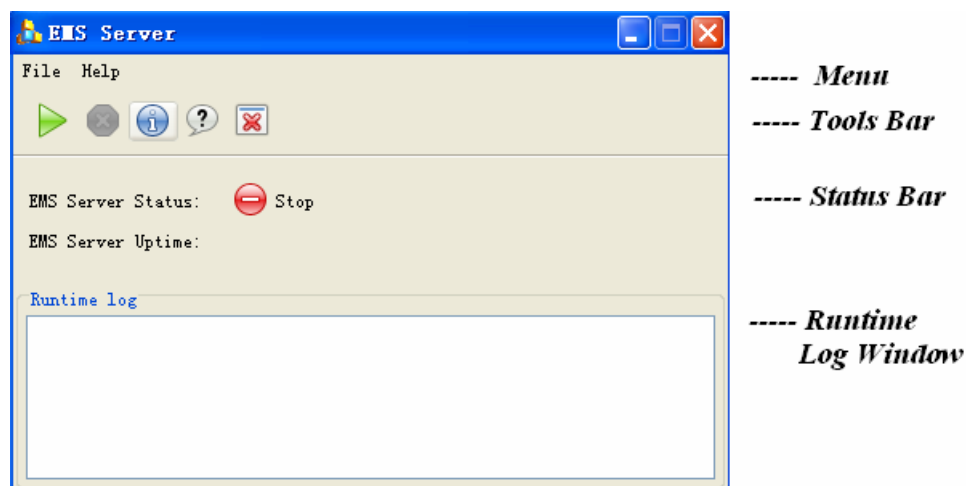


Figure 2-1 EMS Server Window

There are four sections in EMS server window: **Main Menu**, **Tools Bar**, **Status Bar** and **Runtime Log Window**.

In **Main Menu**, all commands can be found on File sub-menu.

In **Tools bar**, five icons are used for shortcutting. (▶ run, ⏹ stop, ⓘ initialize, ? help, ✖ exit.)

In **Status bar**, it shows the current status of EMS server and the time it lasts.

In **Runtime Log window**, it displays the results and details when EMS server executes commands.

► Exit EMS server Interface

To close EMS server interface, you should do as the following:

- 1) Stop EMS server when the EMS server is in running status;
- 2) Click ✖ **Exit** icon on Tools bar directly to exit EMS server;
- 3) Or click **File>Exit** on the Menu to exit EMS server;
- 4) Password is "123456".

2.1.2 Run/Stop EMS Server

► Run EMS server

Click **File>Start** on Main Menu, or Click ▶ button on Tools bar to setup EMS server.

If it's the first time to setup, then EMS server establishes a database and the Runtime log window displays as shown in Figure 2-2.

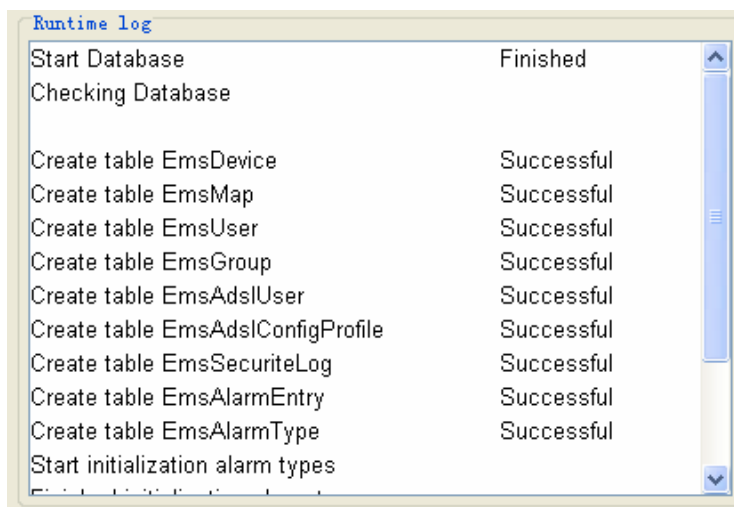


Figure 2-2 Initializing Database

If it's not the first time to start EMS server, the logs window displays as Figure 2-3.

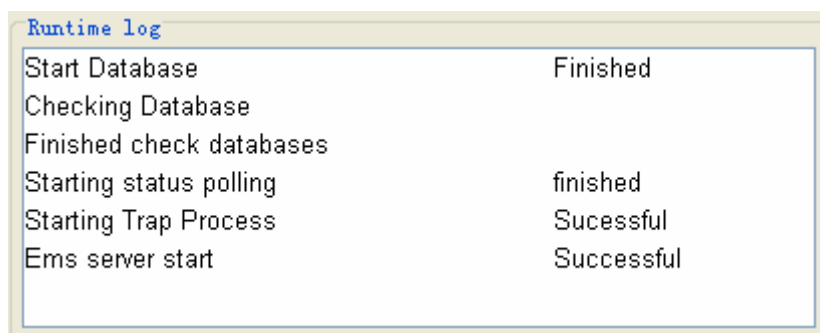




Figure 2-3 Restarting EMS server

If EMS server is successfully started, then EMS server status on Status bar will change to “ Running”; otherwise, it shows “ Stop”. EMS Server Uptime is referred to the duration when the EMS server is successfully run.

When you want to stop EMS server, then the password of root is requested as shown in Figure 2-4. The default value of the password is 123456.

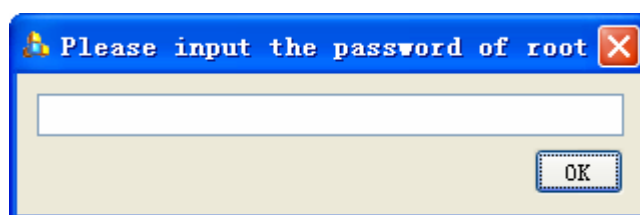



Figure 2-4 Inputting the password of root to stop EMS server

► Stop EMS server

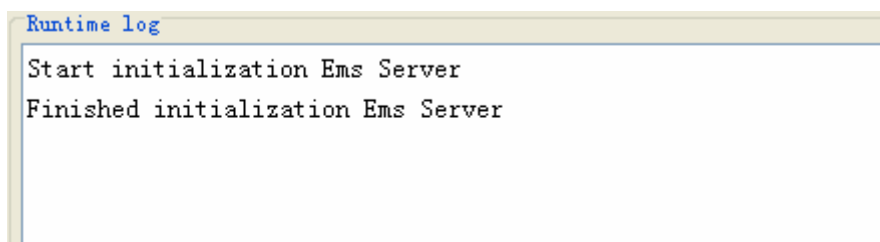
If you want to stop EMS server, click **File>Shutdown** on Main Menu, or Click  button on Tools bar to stop EMS server.

2.1.3 Initialize EMS Server

If you want to delete or remove the current database, you need to initialize EMS server as the following:

- 1) Stop EMS server;
- 2) Click **File>Initialize EMS Server** to start initializing as shown in Figure 2-5.


Note: Once you start initializing EMS server, all previous databases will be deleted and can not be recovered.



```
Runtime log
Start initialization Ems Server
Finished initialization Ems Server
```

Figure 2-5 Initializing EMS server

2.1.4 Minimum/Maximum EMS server window

Once you click Minimum icon on EMS server window, then this window will be hidden automatically. If EMS server is running, then it will be shown as  icon; if EMS server is not running, then this icon will turn to be gray. To click this icon, EMS server window will be maximized to the original display.

2.2 EMS Client

2.2.1 Login EMS Client

Before Login EMS Client Application, make sure EMS server is running properly.

- 1) Click **Start>Program Files>EMS>EMS Application**, or Click shortcut icon on

desktop, then EMS Client Application Login window prompt as shown in Figure 2-6.

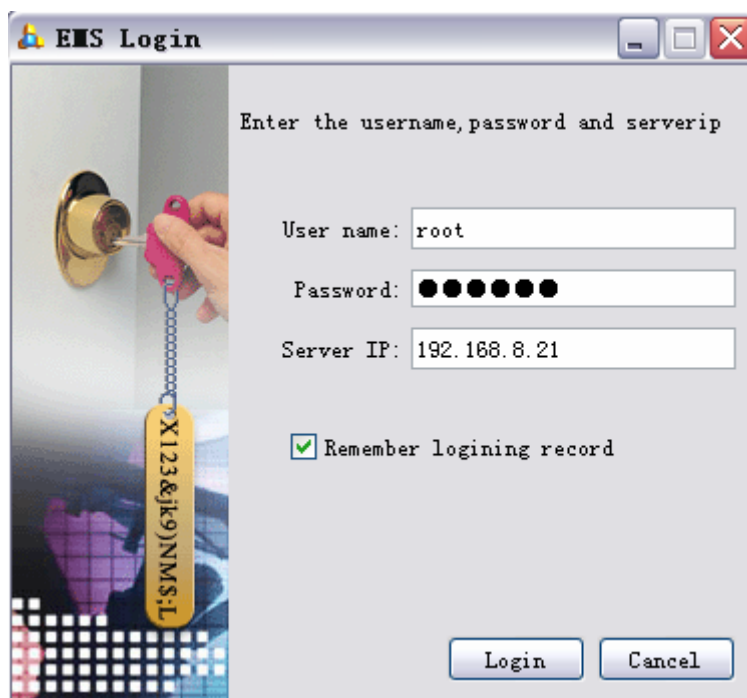


Figure 2-6 EMS Client Login Interface

2) Simply enter your user name and password respectively, and click Login to login EMS system.

default user name	root
default password	123456
default server IP address	localhost

3) After launching EMS and logging in with a valid username and password, the main window, EMS Client Application prompts as shown in Figure 2-7.

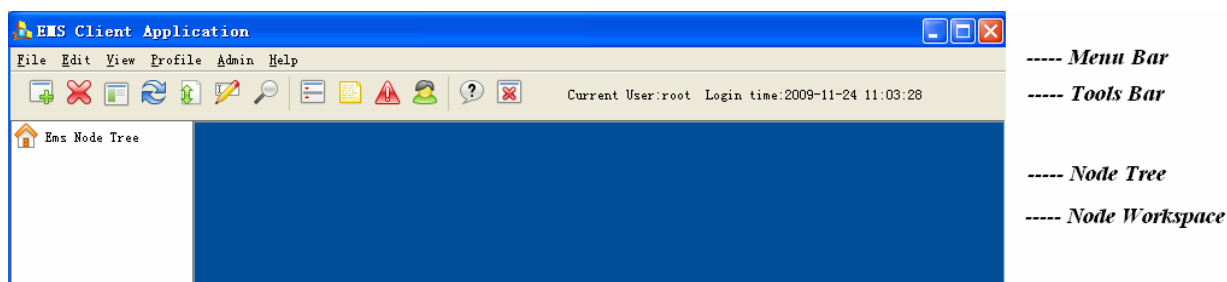


Figure 2-7 EMS Client Application Window

There are four sections in EMS Client Interface: *Menu bar*, *Tools bar*, *Node Tree* and *Node workspace*.

The definition of Tools bar is shown in Figure 2-8 .

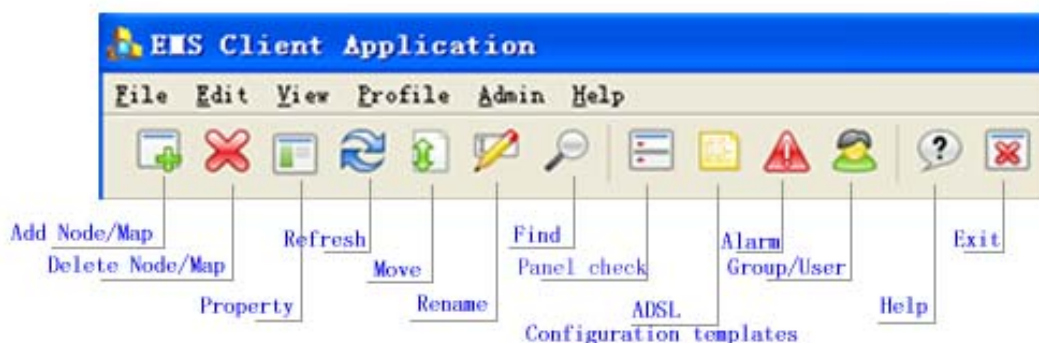


Figure 2-8 Meanings of Tools bar

2.2.2 Concepts in configuring EMS Client

Node:

Node is the fundamental element of EMS system and belongs to roots or maps. Any manageable equipment can be regarded as Node, for example DSLAM5048.

Map:

Map is the subset of Nodes and belongs to roots or maps. It can be created below root and normally used for classification of regions or areas.

Root:

Root is the total system and can not be created by user. User can create Maps and Nodes belong to Root directly.

Tree:


Tree is the topological mapping of root, and it is the set of Maps and Nodes.

Workspace:

Workspace is the area for nodes management, such as node configuration, node operation etc.

2.2.3 Node/Map/Root Settings

2.2.3.1 Add Node

- Move the prompt to map which you want to create belongs to;
- Click *Edit>add* menu or click  icon on Tools bar;

→ The creation wizard pop out as shown in Figure 2-9;

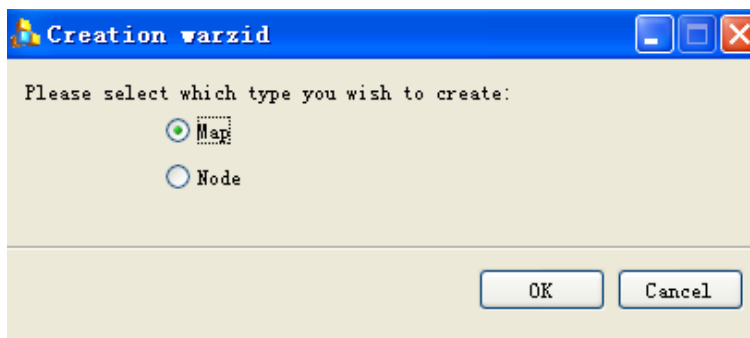


Figure 2-9 Creation Wizard Interface

→ If select *Node* and Click *OK*, then *Create new node* window prompts as shown in Figure 2-10.

In Basic part, you can add IP address one by one, or add a batch of IP address by inputting IP range. Node name can be renamed one by one (default value is IP address); otherwise, IP address is the name by default.

Once you choose to add IP address in batch, please pay attention that the first 3 sections of IP address mask should be fixed, while the last section can be automatically increased by 1. For example: if you input 192.168.1.1 and 192.168.1.4, then four nodes (192.168.1.1, 192.168.1.2, 192.168.1.3, and 192.168.1.4) are added automatically.

In option part, you can modify the options related to SNMP protocol, and change the Parent selection.

If you want to add some IP address that is not linked to EMS client, you can choose "Add even if the node is not reachable" and add an IP address by force.

Figure 2-10 Create a new Node

→ If you finish filling items to new node, click **OK** to make it effected. In Tree table, you can see adding a new IP address 192.168.8.32 to root (Figure 2-11).

If the new node is manageable, then it's displayed as Green; otherwise, it's displayed as gray.

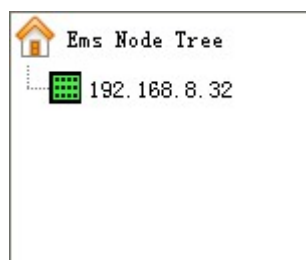



Figure 2-11 Adding a new IP address as node

→ EMS server gets the status of nodes in the polling interval. Node Tree updates the manageable status of nodes automatically.

2.2.3.2 Add Map

- Move the prompt to map which you want to create belongs to;
- Click **Edit>add** on menu or click  icon on Tools bar;
- The creation wizard pop out as shown in Figure 2-12;

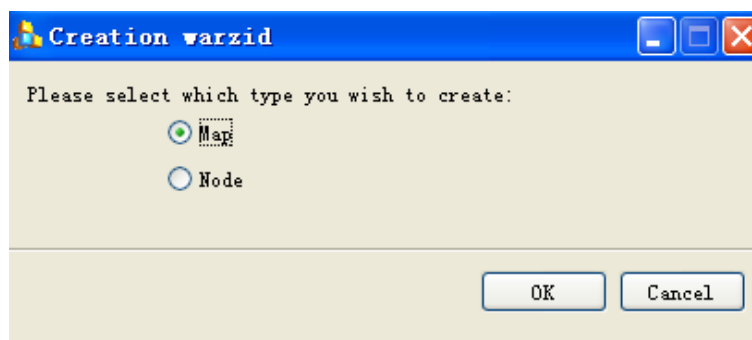


Figure 2-12 Creation Wizard Interface

→ Please select Map and Click OK, then Map Creation window is popped out as Figure 2-13.

Fill in the Name for the new Map, and select the Parent root.

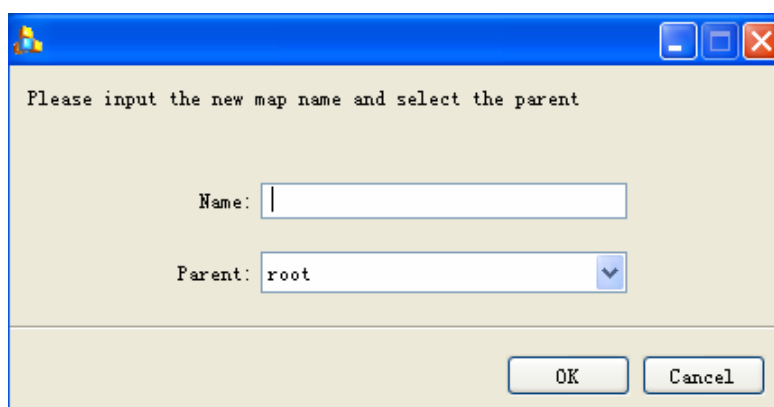




Figure 2-13 Name the new Map

2.2.3.3 Delete Node/ Map

Move the prompt to Node/Map you want to delete, then Click **Edit>delete** in the menu, or Click  icon on Tools Bar.

Note: root can not be deleted.

2.2.3.4 Rename Node/Map

Move the prompt to Node/Map you want to rename, then Click **Edit>rename** in the menu, or click  icon on the tools bar, then Rename Window appears as shown in Figure 2-14. Input a new name and click OK to finish renaming.

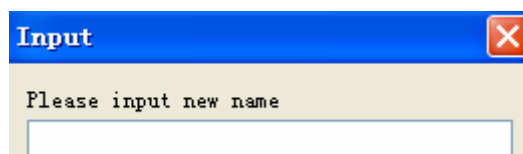




Figure 2-14 Rename Window

2.2.3.5 Move Node

Move the prompt to Node/Map you want to move, then Click **Edit>move** in the menu, or click  icon on the tools bar, or Right-click the mouse and select Move, Move Window is popped out.

Input the destination name of map, and click OK.

2.2.3.6 Properties of Node/Map

Move the prompt to Node/Map you want to change the properties, then Click **Edit>Properties** in the menu or click  icon on the tools bar, or Right-click the mouse and select Properties, Properties Window appears as shown in Figure 2-15. Simply input the destination name of map, and click OK.

In the Properties window, you can modify Node Name, Parent Name, SNMP Properties and Polling Interval, and click **modify** to save them.

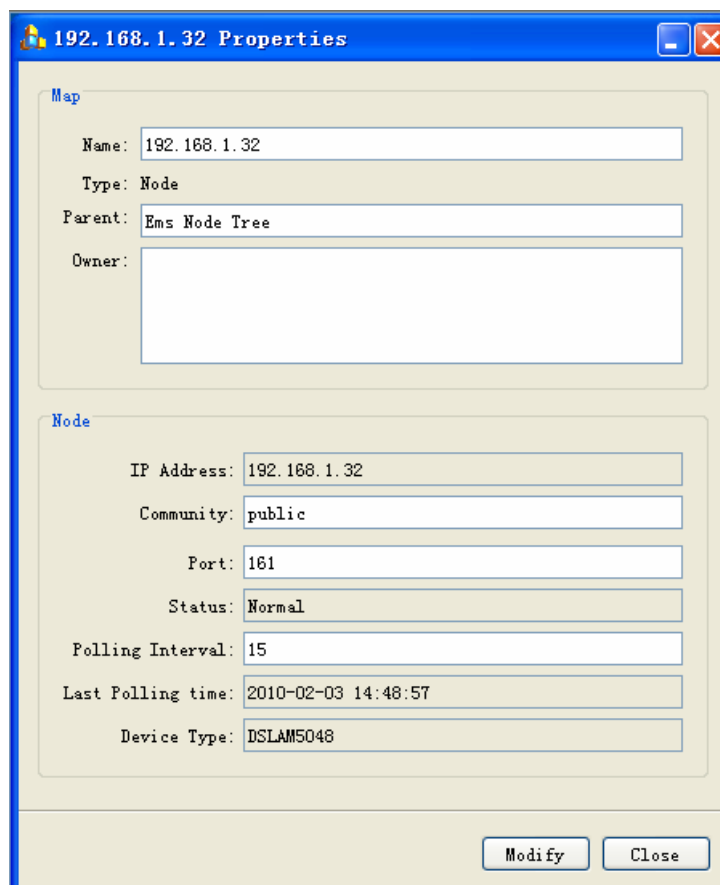



Figure 2-15 Properties Window

2.2.3.7 Search Node/Map

If you want to find a Node/Map, please Click **View>Find** in the menu or click  icon on the tools bar, Find Window appears as shown in Figure 2-16. You can find a node/map by name or by IP address, and after you click **Find**, the cursor will lock on these right IP addresses.

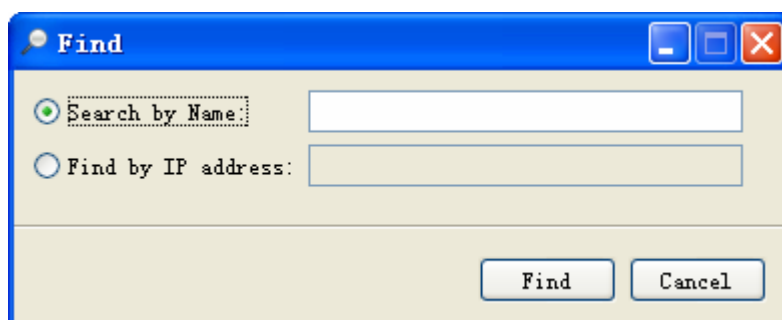


Figure 2-16 Find Window

2.2.4 User Management

2.2.4.1 Change Password

When you want to change password, Click **Admin>Change Password** in the menu, the Change Password window appears as shown in Figure 2-17.

Fill in the new password and confirm it for the second time.

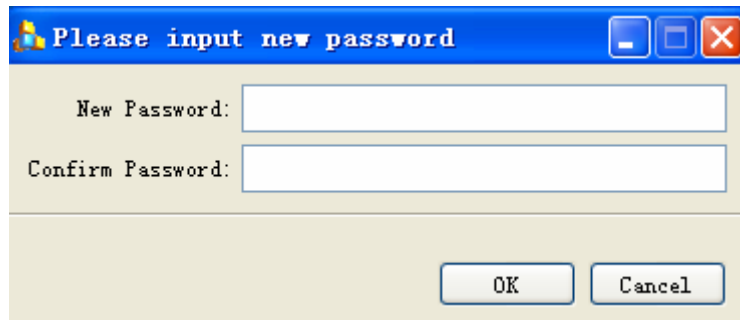



Figure 2-17 Change Password Window

2.2.4.2 Users Management

Click **Admin>Users and Groups** on the menu or click  icon on the tools bar, the users and groups window is open as Figure 2-18.

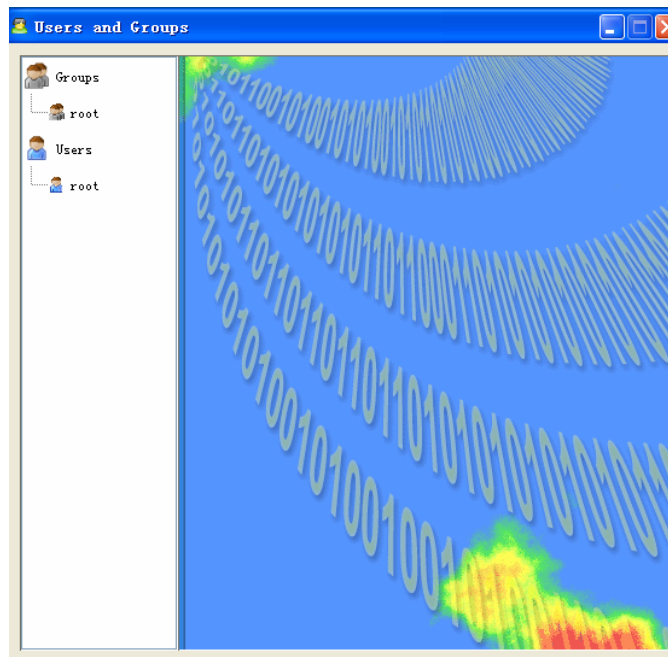



Figure 2-18 User Window

Notes: Only root is authorized to use this function, and open the privilege for other users and groups, modify password, add/delete users & groups, and define the display interface etc.

► Add a new Group

Right-click  group icon, and choose Add, then Add new group window appears as Figure 2-19.

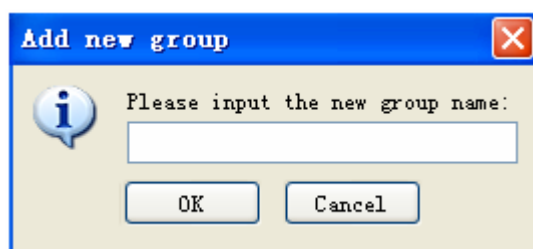


Figure 2-19 Add new Group

For example, if you want to add Normal as a new group, input **Normal** in the blank, then Groups window is updated as shown in Figure 2-20.

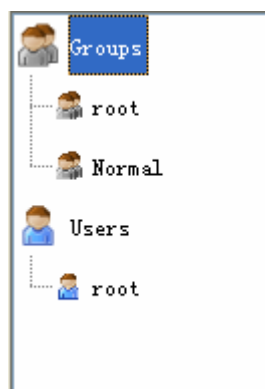


Figure 2-20 Add Normal as a new Group

► Privilege Definition to Group

Click the icon of sub-group belonging to Groups, the corresponding information is shown in the right window area (Figure 2-21).

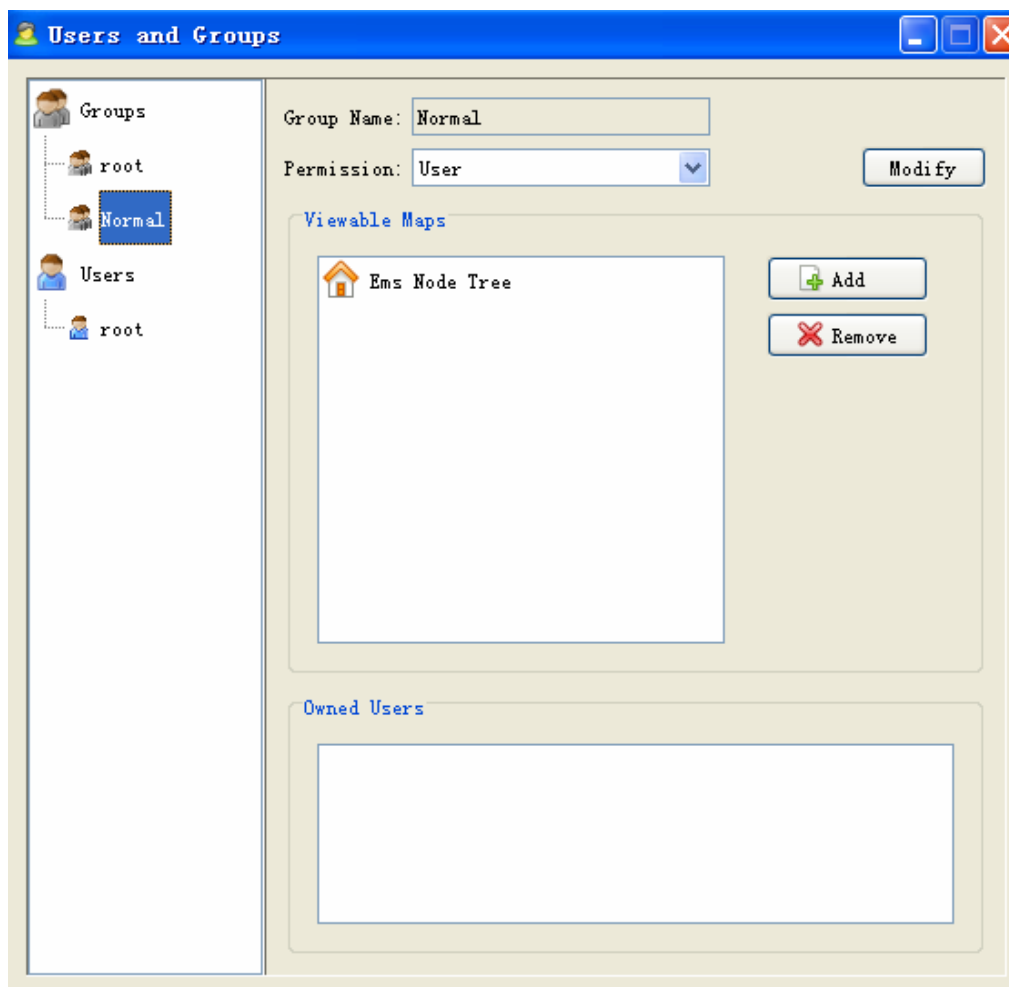


Figure 2-21 Information for sub-groups in details

If you want to change the privileges of sub-group, please click **Modify** and choose the privilege level which is listed below.

Privilege Level	Description
Admin	Full access. Admin acts as Root manager
Powerful User	Full access except for adding/deleting User/Groups
User	Normal access. User can only inquire existing sources, can not add, delete any sources including Node, Map and User/Group

Note: The privilege of Root can not be changed.

► Add Nodes to sub-group

You can add a couple of nodes to one sub-group by clicking **Add** button, therefore the sub-group can only see the nodes which belong to.

For example, for sub-group Normal, Click **Add** and Node Tree Dialog window is displayed as Figure 2-22. If you select DSLAM5048 and click **OK**, then in sub-group Normal, the user can only see DSLAM5048, but not DSLAM5024.

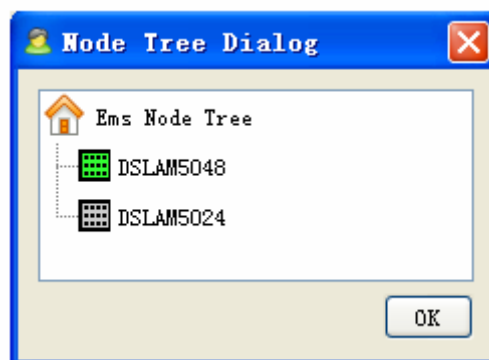


Figure 2-22 Add a Node to Sub-group

► Add New Users

Right-click  users icon, and click **Add** button to add a new user.

For example, if you want to add a new user NormalUser to Normal sub-group, you can do as the following:

1) Click **Add** button, then Add new user window is popped out as shown in Figure 2-23. Please input NormalUser as user name and click Ok.

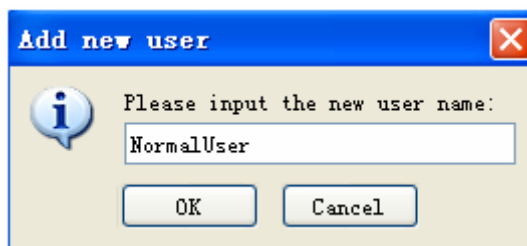


Figure 2-23 Add a new user

2) Double-click NormalUser icon, then user window is popped out as Figure 2-24.

- Set the password of the current user
- Select the name of the sub-group, such as "Normal"
- Click **Modify** to confirm all changes.
- In Event area, all logs are shown when this user login or log out. The user can delete a single log record by **Delete** button, or clear up all log records by **Clear** button.

User Name: NormalUser

Password:

Confirm Password:

Belong to Group: root

Event

Time	Event
------	-------

Figure 2-24 Modify user's information

2.2.5 ADSL Profile Settings

Click **Profile>ADSL Config Profile** on the menu, ADSL Config window is popped out as Figure 2-25.

Add: Add a new ADSL config profile as shown in Figure 2-26;

Edit: Display all information of ADSL Config chosen or modify certain settings as shown in Figure 2-27;

Delete: remove an ADSL config profile.

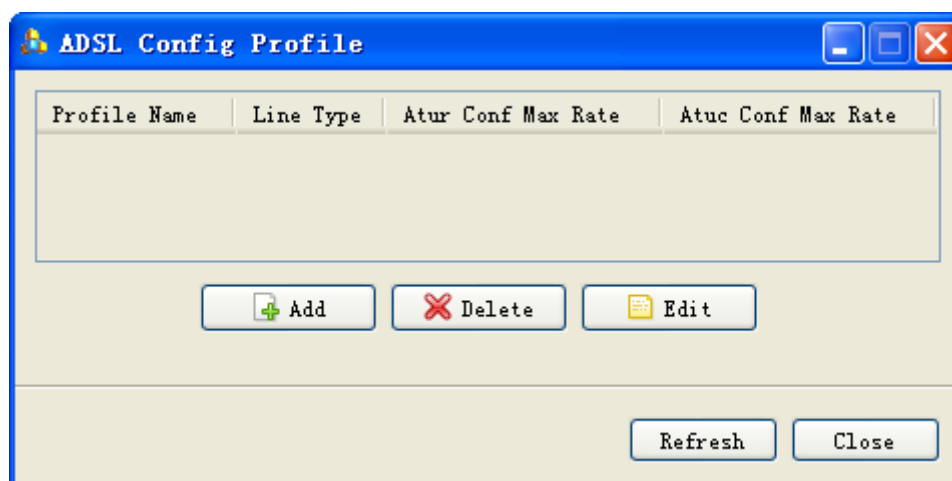


Figure 2-25 ADSL Config Profile Window

ADSL Config Profile	
Profile Name: NewProfile	Line Type: Interleaved
Atur Conf Max Rate: 1024000	Atuc Conf Max Rate: 2048000
Atur Conf Min Rate: 32000	Atuc Conf Min Rate: 32000
Atur Conf Max SnrMgn: 310	Atuc Conf Max SnrMgn: 310
Atur Conf Min SnrMgn: 0	Atuc Conf Min SnrMgn: 0
Atur Conf Target SnrMgn: 60	Atuc Conf Target SnrMgn: 60
Atur Conf Interleave Delay: 16	Atuc Conf Interleave Delay: 32

Add Close

Figure 2-26 Create a New Config Profile

ADSL Config Profile	
Profile Name: NewProfile	Line Type: Interleaved
Atur Conf Max Rate: 1024000	Atuc Conf Max Rate: 2048000
Atur Conf Min Rate: 32000	Atuc Conf Min Rate: 32000
Atur Conf Max SnrMgn: 310	Atuc Conf Max SnrMgn: 310
Atur Conf Min SnrMgn: 0	Atuc Conf Min SnrMgn: 0
Atur Conf Target SnrMgn: 60	Atuc Conf Target SnrMgn: 60
Atur Conf Interleave Delay: 16	Atuc Conf Interleave Delay: 32

Modify Close

Figure 2-27 Add a new ADSL Config Profile

2.2.6 Alarm Profile Settings

Click *Profile>ADSL Alarm Profile* on the menu, ADSL Alarm Config window is popped out as Figure 2-28.

Add: Add a new Alarm config profile as shown in Figure 2-29;

Edit: Display all information of Alarm Config chosen or modify certain settings;

Delete: remove an Alarm config profile.



Figure 2-28 Alarm Config Profile

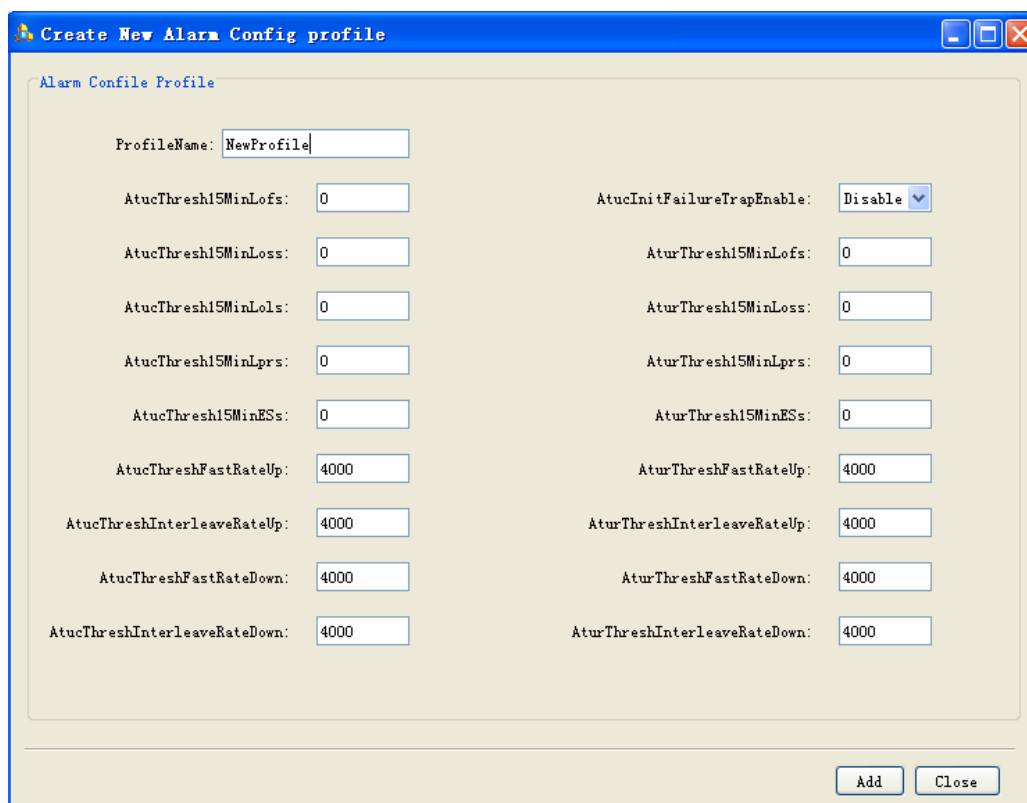


Figure 2-29 Create a new Alarm Config Profile

2.2.7 Alarm Records

Click **View > Alarm** on the menu or click  icon on the tools bar, Alarm window is popped out as Figure 2-30.

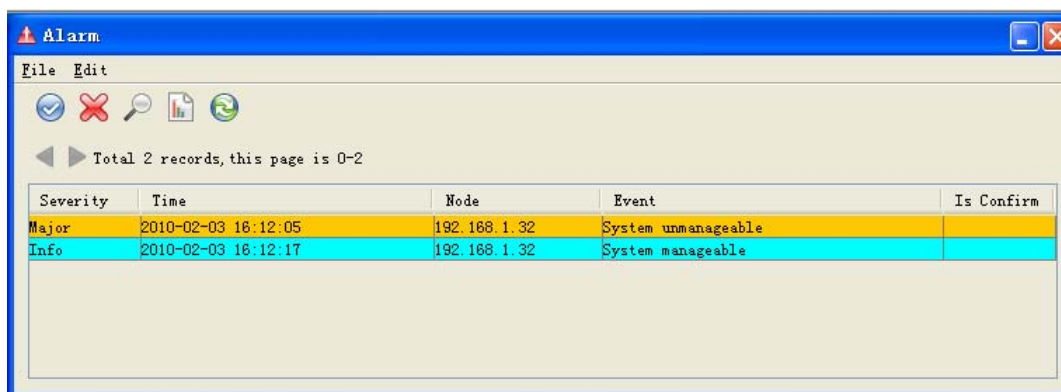






Figure 2-30 Alarm Window

- To confirm the alarm, please click  button;
- To delete the alarm, please click  button;
- To clear all alarms records, please click *Edit>Clear*;
- To update the alarm records, please click  button;
- To search the alarm records, please click  button, and you can see Find Alarm Window (Figure 2-31).

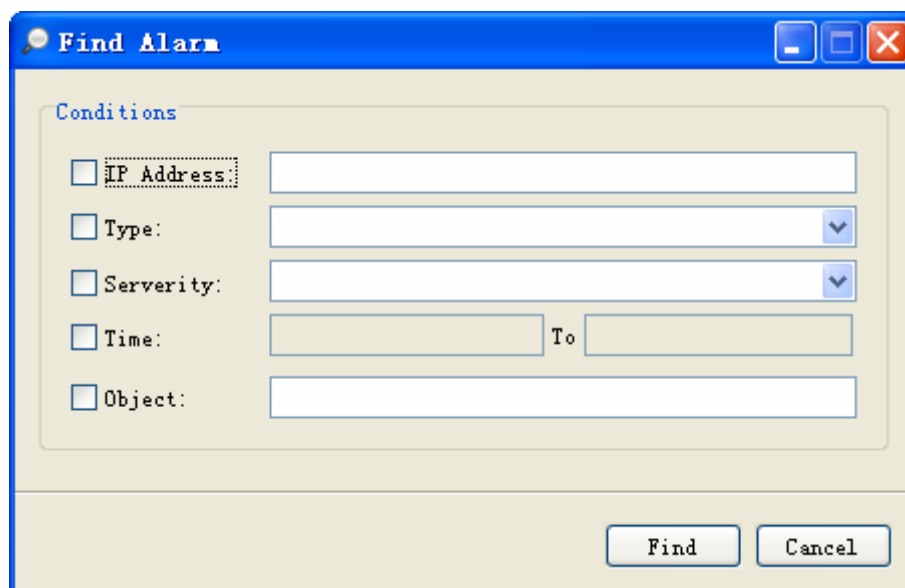


Figure 2-31 Find Alarm Window

3. Element Configuration & Management


This chapter provides instructions to configure the DSLAM5008/5016/5024 and DSLM5048 using EMS client system.

3.1 Prerequisite

Please refer to Chapter 2.2.3.1 Add a node, Add DSLAM5008/5016/5024/5048 to EMS database.

3.2 EMS for DSLAM5008/5016/5024

3.2.1 Introduction to DSLAM5008/5016/5024 Chassis View

After you add a new node of DSLAM5008/5016/5024, please move the cursor to node, and click **View>Chassis** or click  button, then the Chassis View will be display in Node Workspace like shown in Figure 3-1.

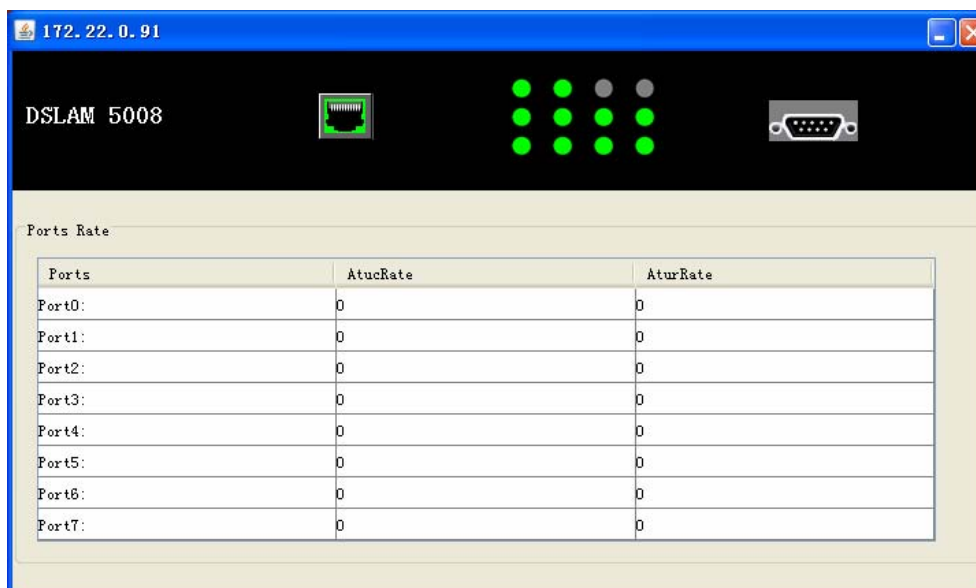


Figure 3-1 Chassis View

On the top of the window, the faceplate of the equipment displays the real-time status of the equipment. The user can recognize the signal status from the lighting:

Lighting	Signal Status
Port LED is Gray	Port is close.
Port LED is Twinkling	Port is open and connecting with subscriber.
Port LED is Lighting	Port is well connected with subscriber.
Ethernet Indicator displays as yellow	The speed-rate is 10Mbps.
Ethernet Indicator displays as green	The speed-rate is 100Mbps.

Whenever you right-click the icons of LED, indicator and other parts of chassis, the operation menu will display correspondingly.

On the bottom of the window, both the uplink rate (AturRate) and downlink rate (AtucRate) are shown to each port.

3.2.2 Port Management

Right-click the port icon, you can see the port management menu, including Enable / Disable/ Refresh/ Current Status/ Configuration/ Alarm Configuration/ Bridge Service.

► Current Status

When you select Current Status, then the status information of chose port is shown as Figure 3-2.

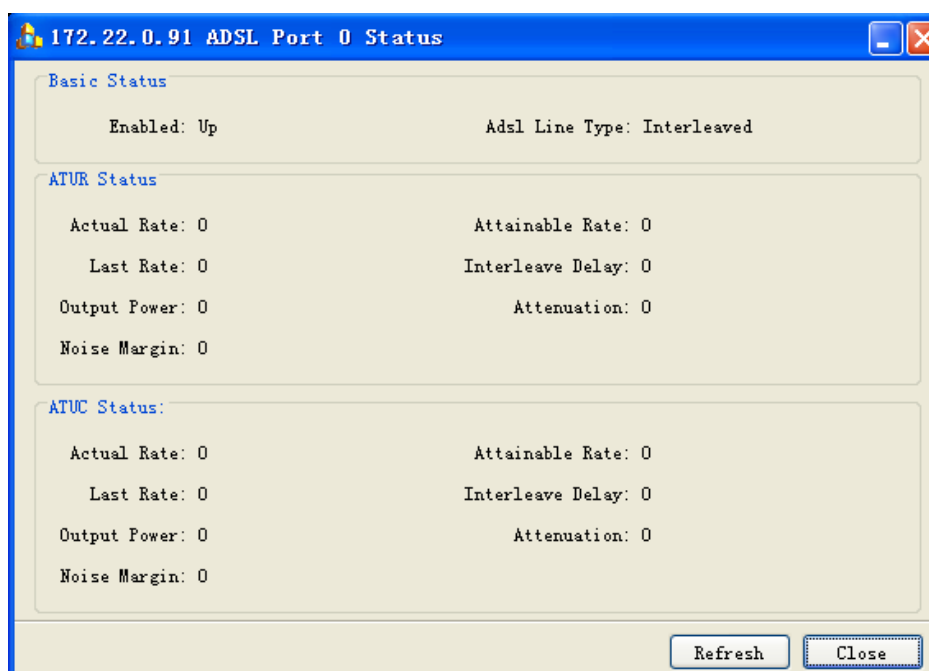


Figure 3-2 Current Status of selected port

► Configuration

When you select Configuration, then the parameters of selected port is shown as Figure 3-2. You can modify parameter and click **Modify** for saving. If you choose **Use Config Profile**, the configuration might become easier.

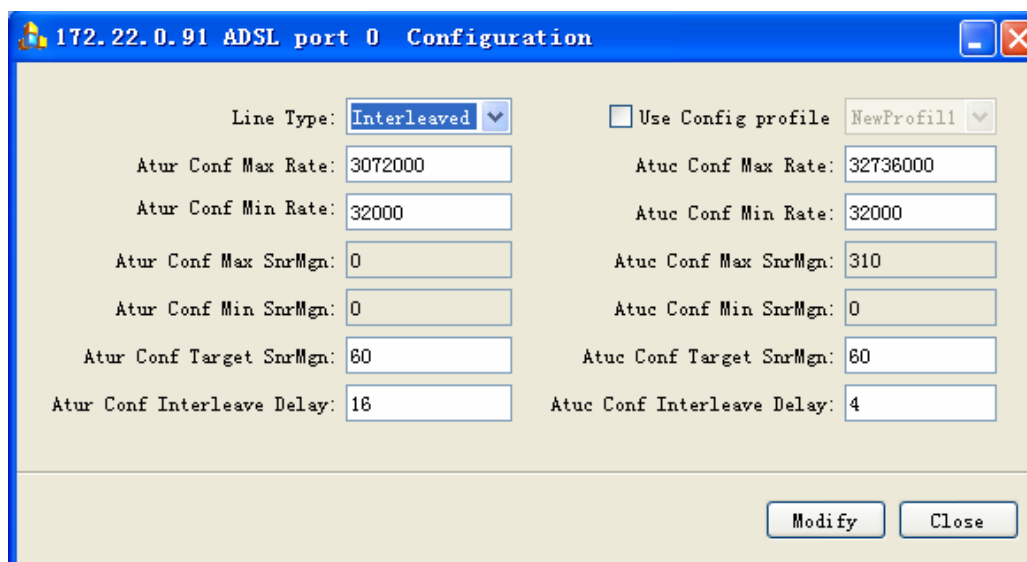


Figure 3-3 Configuration of selected port

3.2.3 System Management

If you click the faceplate of the chassis, you can see system management menu, including System/ Refresh/ VLAN Configuration/ Forwarding Database/ Subscriber/

Batch Config.

Note: If you are the first time to configure VLAN/PVC, or bridge parameters, the login window may occur as shown in Figure 3-4.

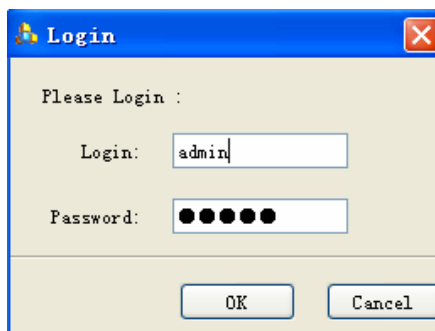


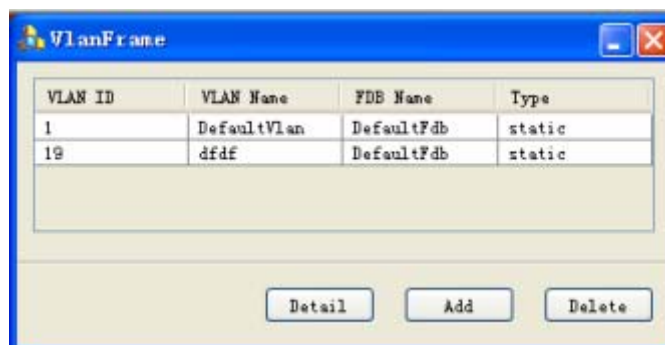
Figure 3-4 Login Window

3.2.3.1 VLAN Management

If you choose VLAN Configuration, you will configure the VLAN properties.

When you successfully login the system, the VLAN table will be shown as Figure 3-5.

- To add a new VLAN, please click Add and input VLAN ID and VLAN Name shown in Figure 3-6;
- To delete a VLAN, please click Delete. (Note: the default VLAN DefaultFdb can not be deleted)
- To view the details of one VALN, please click Details and VLAN Detail window is shown as Figure 3-7.



VLAN ID	VLAN Name	FDB Name	Type
1	DefaultVlan	DefaultFdb	static
19	dfdf	DefaultFdb	static

Figure 3-5 VLAN Table

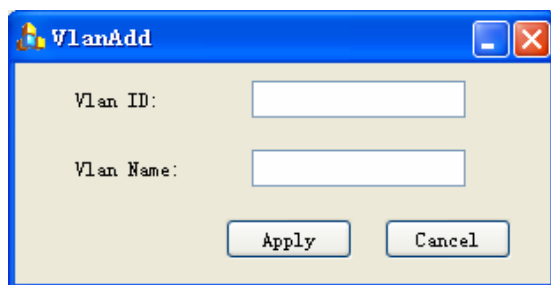


Figure 3-6 Add a new VLAN

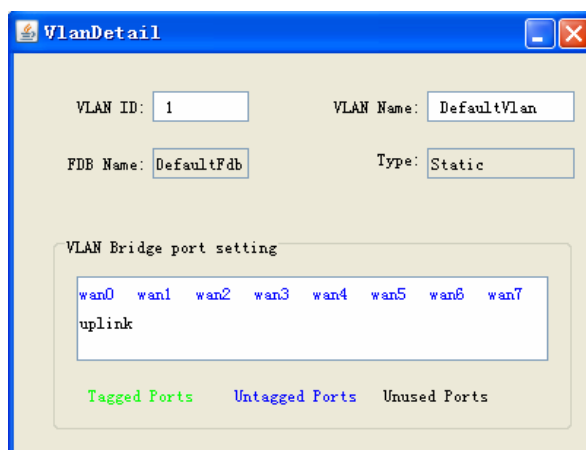


Figure 3-7 VLAN Detail Window

In VLAN Detail window (Figure 3-7), VLAN bridge information is also shown by colors: Tagged Ports is marked in green, Untagged Ports is marked in blue, and Unused Ports is marked in black.

Right-click the bridge port, you can modify the setting of bridge port; even by using Ctrl and Shift button together, you can select a couple of bridge port and modify them at one time.

3.2.3.2 PVC Configuration

If you choose PVC Configuration, you will configure the PVC properties.

When you successfully login the system, the PVC table will be shown as Figure 3-8.

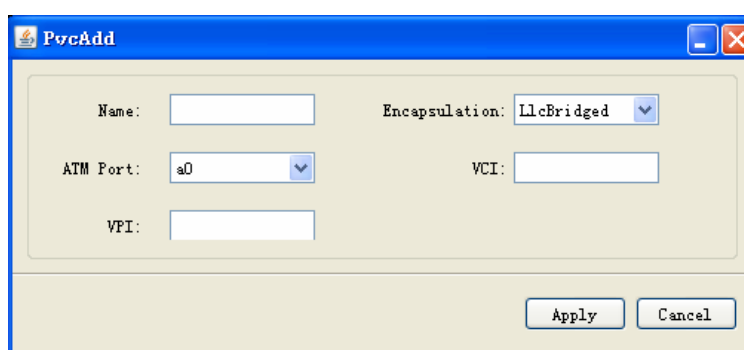
To add a new PVC, please click Add and input some parameters as shown in

- Figure 3-9错误! 未找到引用源。;
- To delete PVC, please click Delete.
- To view the details of a PVC, please click Details and PVC Detail window is shown as Figure 3-10.



ID	Name	Port	TxVci	RxVci	TxVpi	RxVpi
1	wb0	a0	3	4	1	2
2	wb1	a1	6	7	4	5
3	wb2	a2	35	35	0	0
4	wb3	a3	35	35	0	0
5	wb4	a4	35	35	0	0
6	wb5	a5	35	35	0	0
7	wb6	a6	35	35	0	0
8	wb7	a7	35	35	0	0

Figure 3-8 PVC Frame Window



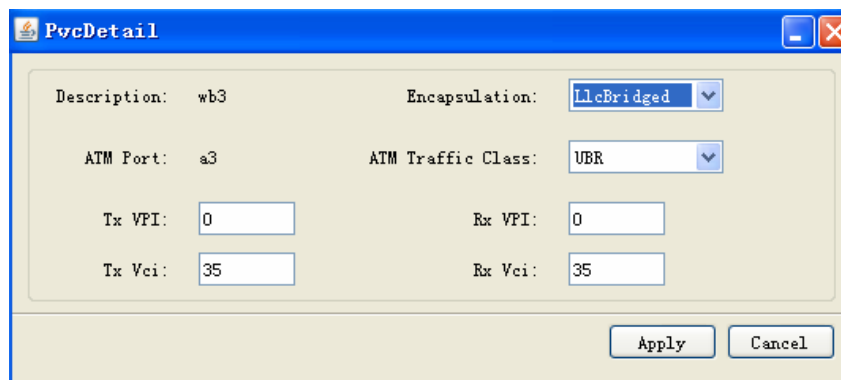
Name: Encapsulation: LlcBridged

ATM Port: a0 VCI:

VPI:

Apply Cancel

Figure 3-9 Add a new PVC



Description: wb3 Encapsulation: LlcBridged

ATM Port: a3 ATM Traffic Class: UBR

Tx VPI: 0 Rx VPI: 0

Tx Vci: 35 Rx Vci: 35

Apply Cancel

Figure 3-10 PVC Detail Window

3.2.3.3 Bridge Configuration

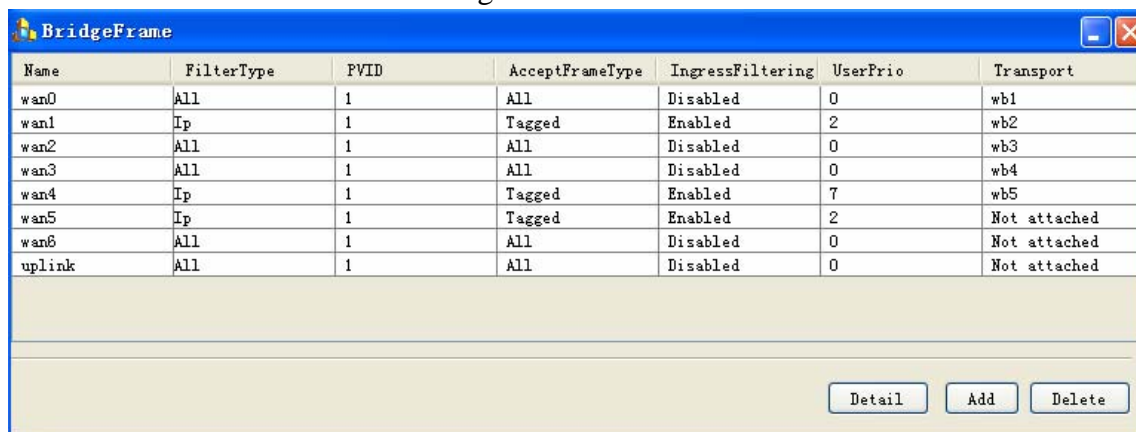
If you choose Bridge Configuration, you will configure the bridge properties. When you successfully login the system, the Bridge table will be shown as Figure 3-8.

To add a new Bridge, please click Add and then Add Bridge window is shown as

Figure 3-12

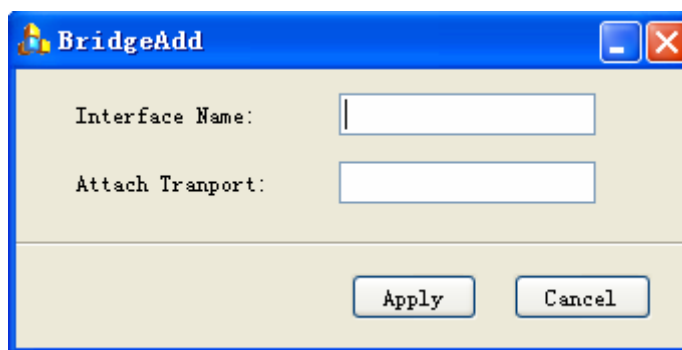
- Figure 3-9错误！未找到引用源。；
- To delete Bridge, please click Delete.

- To view the details of a Bridge, please click Details and Bridge Detail window is shown as Figure 3-13.



Name	FilterType	PVID	AcceptFrameType	IngressFiltering	UserPrio	Transport
wan0	All	1	All	Disabled	0	wb1
wan1	Ip	1	Tagged	Enabled	2	wb2
wan2	All	1	All	Disabled	0	wb3
wan3	All	1	All	Disabled	0	wb4
wan4	Ip	1	Tagged	Enabled	7	wb5
wan5	Ip	1	Tagged	Enabled	2	Not attached
wan6	All	1	All	Disabled	0	Not attached
uplink	All	1	All	Disabled	0	Not attached

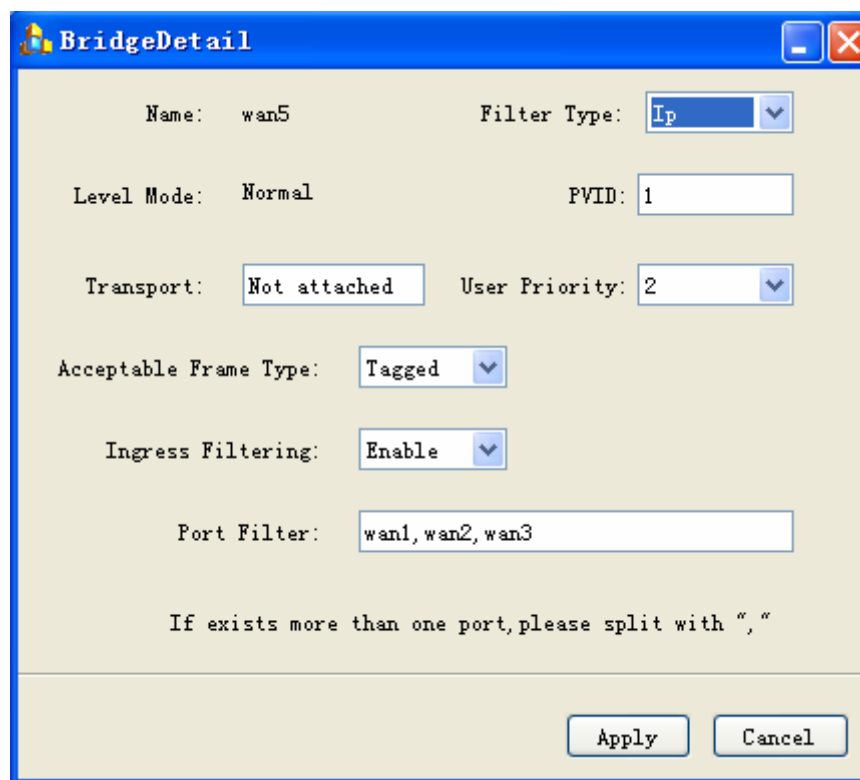
Figure 3-11 Bridge Frame Window



Interface Name:

Attach Transport:

Figure 3-12 Add a Bridge Window



Name: wan5 Filter Type:

Level Mode: Normal PVID:

Transport: User Priority:

Acceptable Frame Type:

Ingress Filtering:

Port Filter:

If exists more than one port, please split with “,”

Figure 3-13 Bridge Details Window

3.2.3.4 Configuration in Batch

If you choose Batch Configuration, you will configure the properties in batch.

► Enable/Disable ADSL port

In Enable/Disable ADSL ports batch setting window (Figure 3-14), you can set ADSL ports easier.

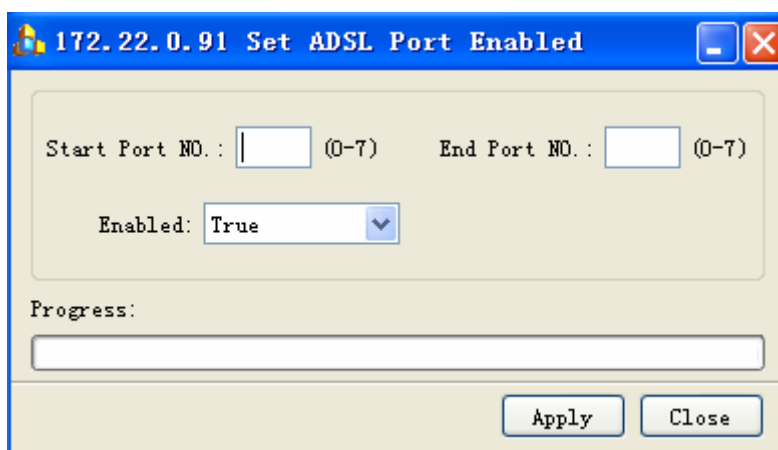


Figure 3-14 Enable/Disable ADSL ports

► Profile setting of ADSL port

In Profile setting of ADSL ports in batch (Figure 3-15), you can set ADSL ports easier.

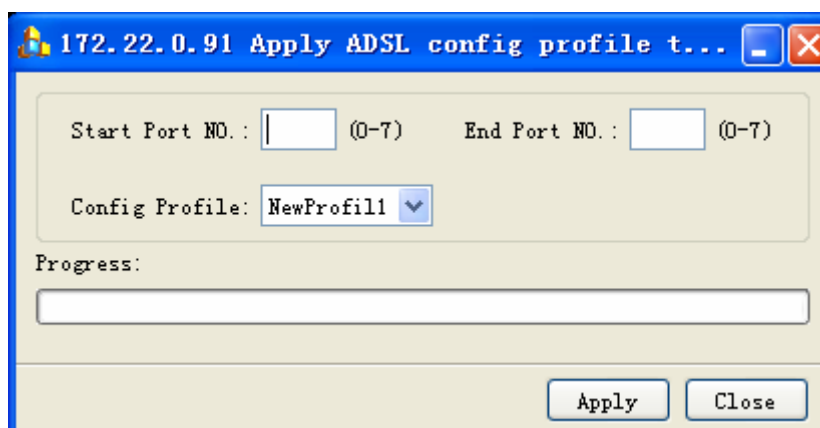


Figure 3-15 Profile Setting of ADSL ports

3.2.3.5 System Configuration

If you choose System, you can view/modify system information, save system configuration and reboot the system.

► System View/modify

When you select System Information, the following window (Figure 3-16) will be shown to give out the simple description of the system, such as system name/Contact info/system location/system run-up time, etc.

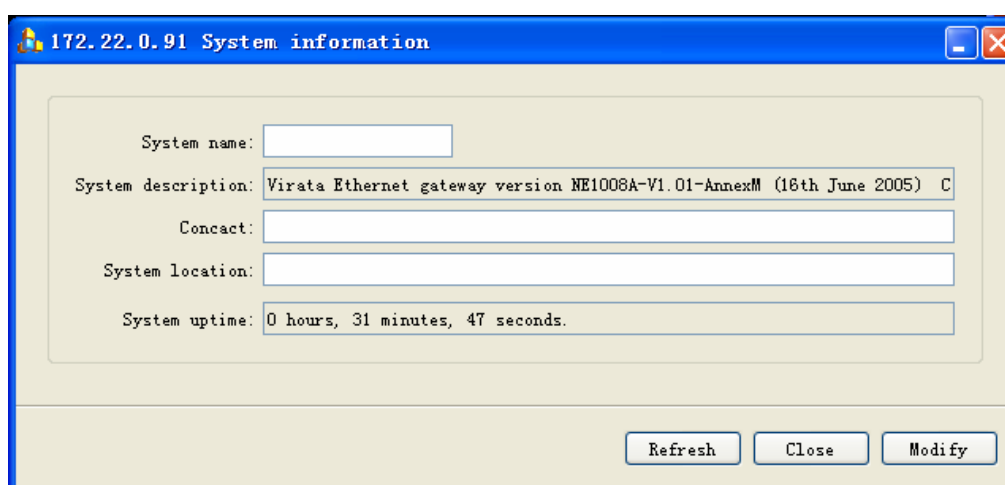


Figure 3-16 System Information

► System Save

To save the system information, please use *System Save* function.

► System Reboot

To reboot the system, please use *System Reboot* function.

3.2.3.6 Subscriber Table

If you choose Subscriber, you can input subscriber's information in details (Figure 3-17), including Name, Address, Telephone number and others.

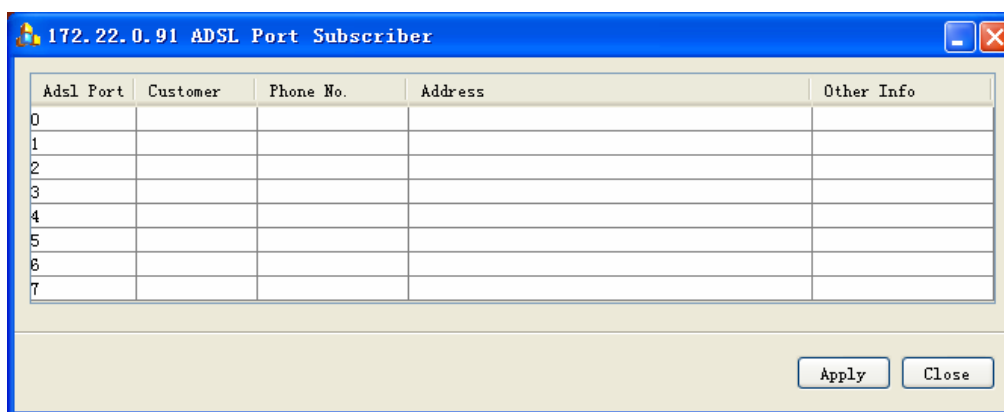


Figure 3-17 Subscriber Information

3.3 EMS system for DLSAM5048

3.3.1 Add SNMP for DSLAM5048

Before adding DSLAM5048 as described in Chapter 2, you should configure some parameters using either Telnet or CLI through RS232.

1. Community

Format: `create snmp comm community <community name> <rw/ro>`

eg: `create snmp comm. community public rw`

2. EMS Server ip


Format `create snmp host ip <ems server ip> community <community name>`

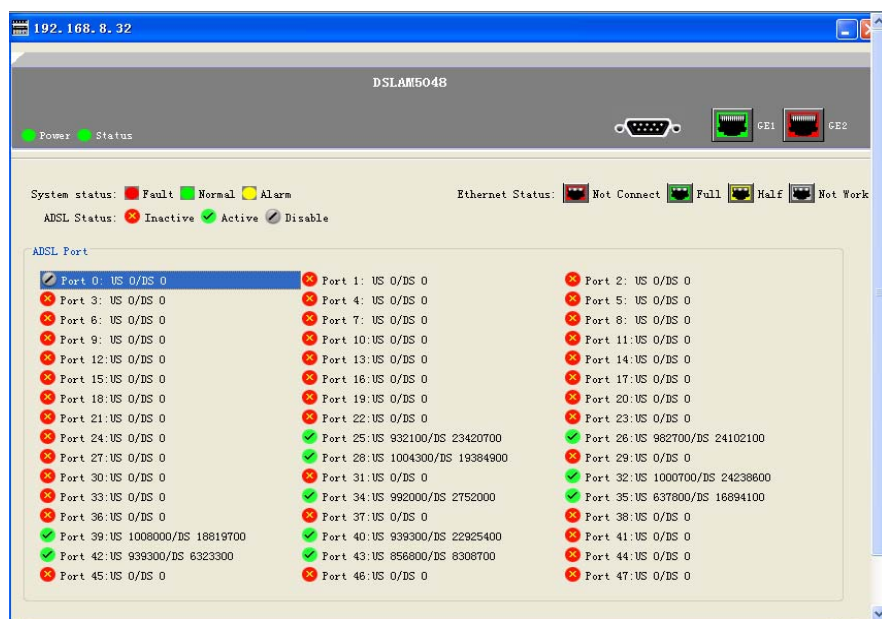
eg: `create snmp host ip 192.168.1.80 community public`

Detailed information of the commands refers to DLSAM5048 Operation Manual.

After you successfully add SNMP to DSLAM5048, then refer to Chapter 2.2.3.1 Add a node to add DSLAM5048 to EMS database.

3.3.2 Introduction to DSLAM5048 Chassis View

After you add a new node of DSLAM5048, please move the cursor to node, and click View>Chassis or click  button, then the Chassis View will be displayed in Node Workspace like shown in Figure 3-18.



错误！未找到引用源。 Figure

3-18 DSLAM5048 Chassis View

On the top of chassis panel, DSLAM5048 figure shows the real-time status.

In the middle of chassis panel, the major status bars are listed, including System status, Ethernet status and ADSL status.

At the bottom of chassis panel, 48 DSL port are listed and their status are refreshed. US refers to upstream, DS refers to downstream.

3.3.3 DSL Configuration

To open the ADSL configuration menu, right click on ADSL port icon.

This menu contains open/close/refresh ADSL port, status inquiring, port configuring, port bridging etc.

3.3.3.1 Refresh/Open/Close ADSL port

To refresh/open/close ADSL port, right-click ADSL port and select Enable/Disable/Refresh on the menu.

3.3.3.2 ADSL Status Inquiring

To inquire ADSL status, right click ADSL port and select Current Status on the menu

or double-click ADSL port as shown in

Refresh button can update the parameters on the status table.



Figure 3-19 ADSL port status

3.3.3.3 ADSL Port configuration

To open ADSL port configuration window, right-click ADSL port as shown in Figure 3-20.

To modify the parameters of ADSL port configuration, revise the value and click **Modify** button.

User can select **Use Config Profile** to modify Profile.

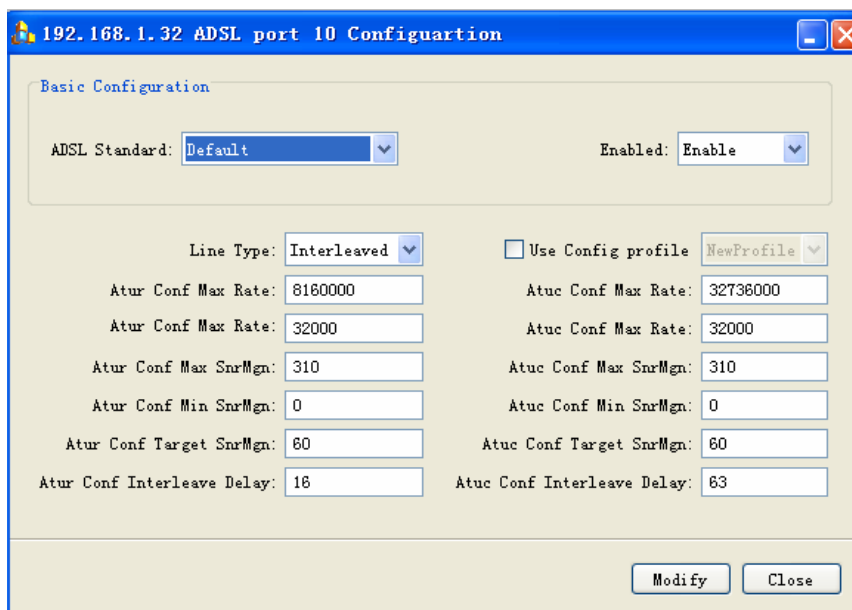


Figure 3-20 Modify ADSL configuration

3.3.3.4 ADSL Alarm Configuration

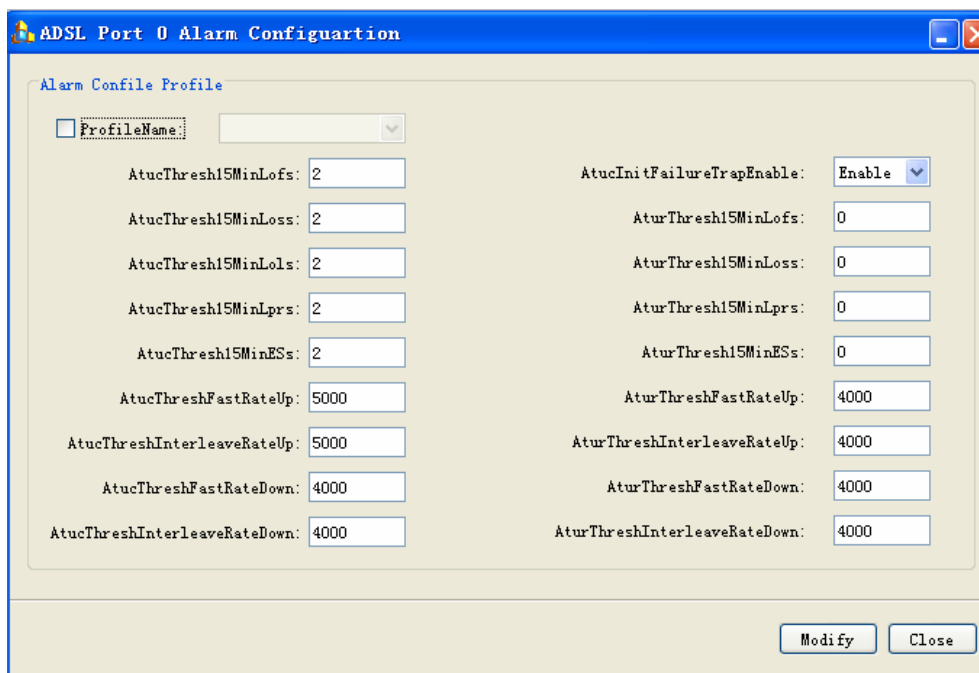


Figure 3-21 ADSL Alarm configuration

3.3.3.5 ADSL Bridge (EOA)

To open ADSL EOA window, right-click ADSL port and select Bridge Service as

shown Figure 3-22.

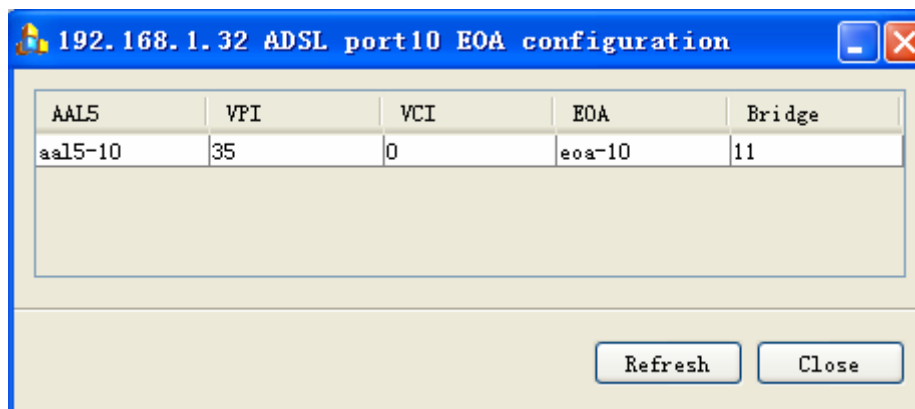


Figure 3-22 ADSL Port EOA configuration

To look into the details, double-click AAL5 port and Bridge Information window pop up as shown in Figure 3-23.

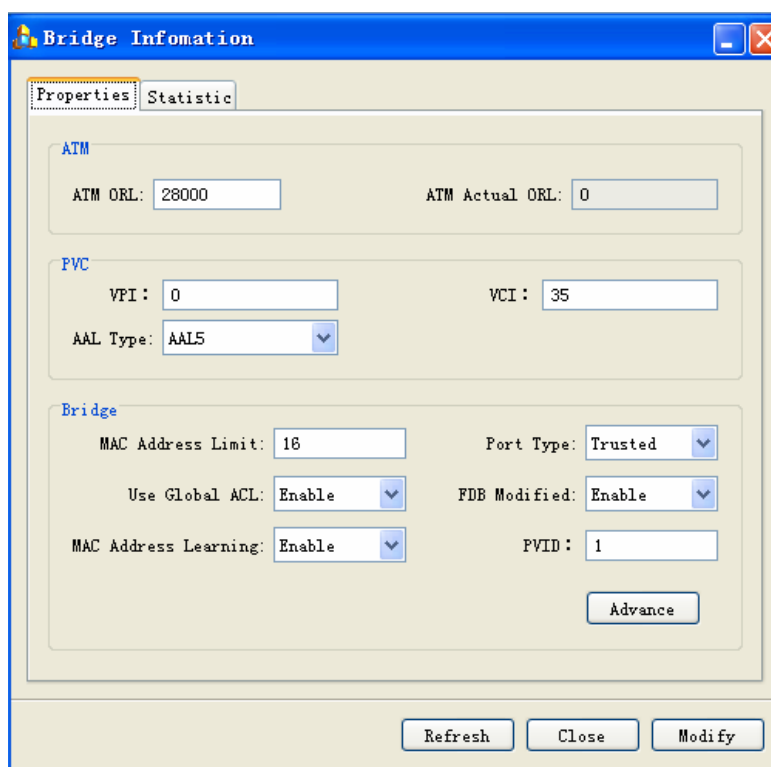


Figure 3-23 Bridge Information Window

There are two tabs in Bridge Information Window, Properties and Statistic.

- Properties: Show the major properties of AAL5 port. To add/delete/get MAC ACL

information of Bridge port, click *Advanced* button to popup the window shown in Figure 3-24;

- **Statistic:** Give the statistics of the frame as shown in Figure 3-25.

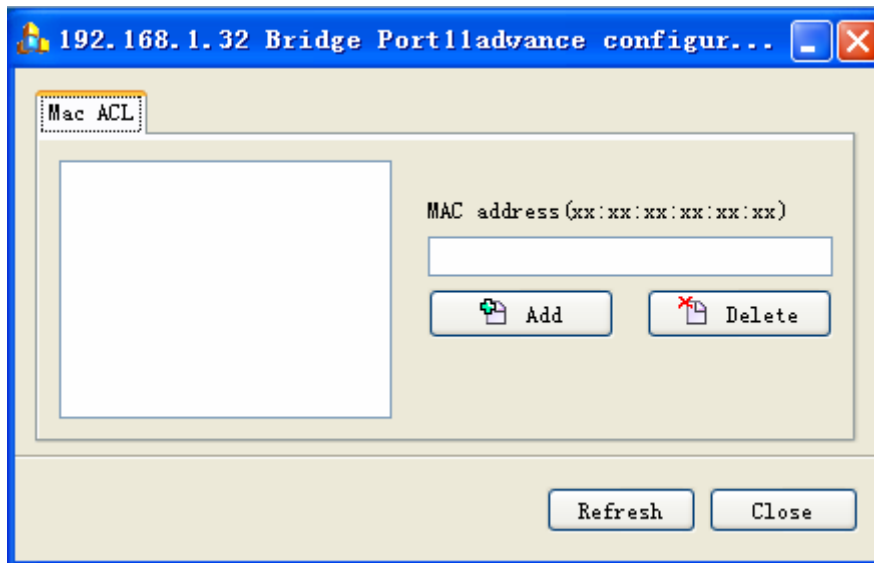


Figure 3-24 MAC ACL window

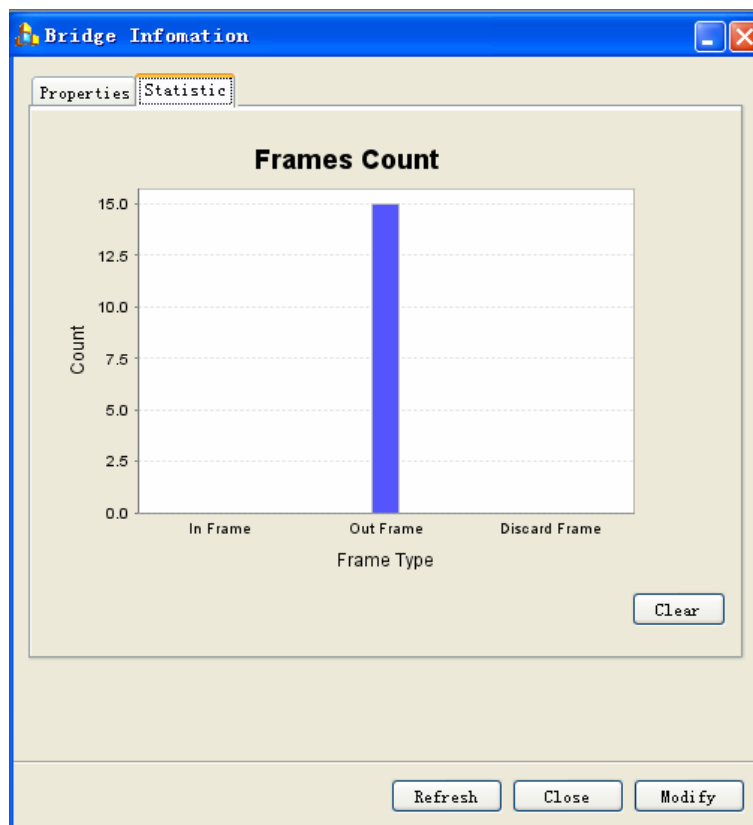


Figure 3-25 Frames Statistics Window

3.3.4 Ethernet Port Configuration

To popup Ethernet port configuration, right-click Ethernet port. Ethernet Port configuration includes port rate setting, operation mode, and bridge setting.

3.3.4.1 Rate/Mode Settings

To set port rate and operation mode,

- 1) right-click Ethernet port, and select speed menu to set speed rate.
- 2) right-click Ethernet port, and select Duplex menu to set operation mode.

Note: If the Ethernet port is configured as Aggregated Mode, then the rate and operation mode can not be configured.

3.3.4.2 Ethernet Port Configuration

To set Ethernet Port Configuration,

- 1) right-click Ethernet port, and select configuration to inquire/Modify settings of Ethernet port as shown in Figure 3-26
- 2) If Ethernet is configured as Aggregated Mode, you can only look into settings of aggregated modes as shown in Figure 3-27.

IP address:	<input type="text"/>	Network mask:	<input type="text"/>
Speed:	<input type="text" value="↓"/>	Duplex:	<input type="text" value="↓"/>
ORL:	<input type="text"/>	Port type:	<input type="text" value="↓"/>
Use DHCP	<input type="text" value="↓"/>	MGM VLAN ID:	<input type="text"/>

Figure 3-26 Ethernet Port Configuration

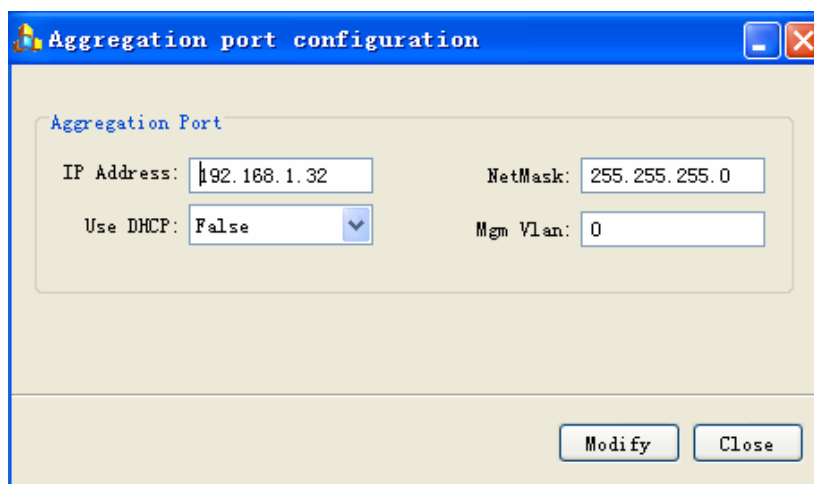


Figure 3-27 Aggregated Port Configuration

3.3.4.3 Bridge Configuration:

To open Bridge Service menu, right-click Ethernet Port as shown in Figure 3-28.

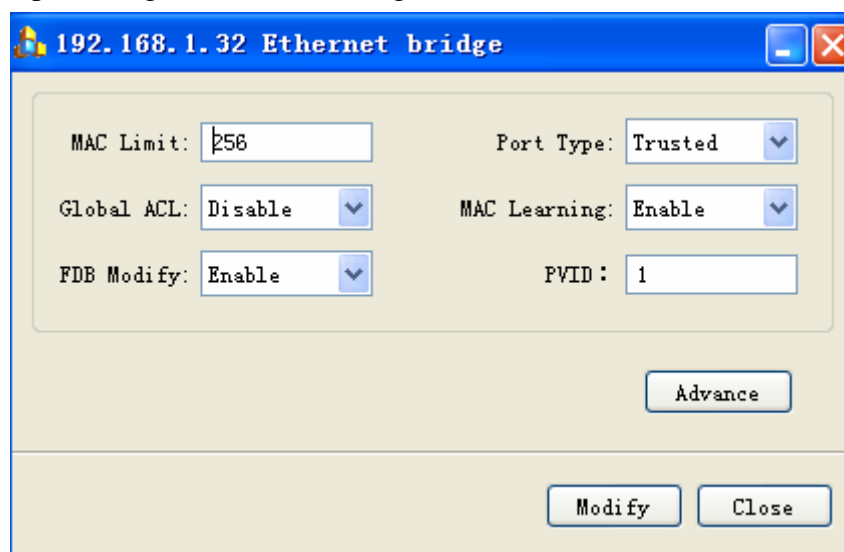


Figure 3-28 Ethernet Bridge Window

If Ethernet port is configured as Aggregated Mode, you can choose any port to see the detail.

3.3.5 VLAN

Right-click Chassis Panel to open VLAN Table window as shown in Figure 3-29.

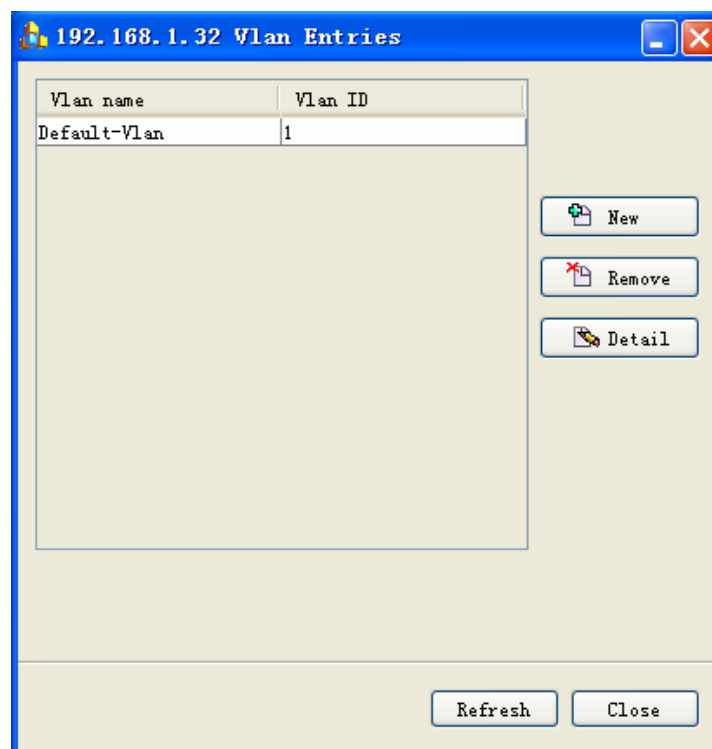


Figure 3-29 VLAN Entries Window

When click Detail button, the VLAN Detail window appears as shown in Figure 3-30. In VLAN bridge port setting sub-window, all 48 ports are listed with legends (Red: Untagged; Pink: Egress; Gray: Forbidden; Black: Unused).

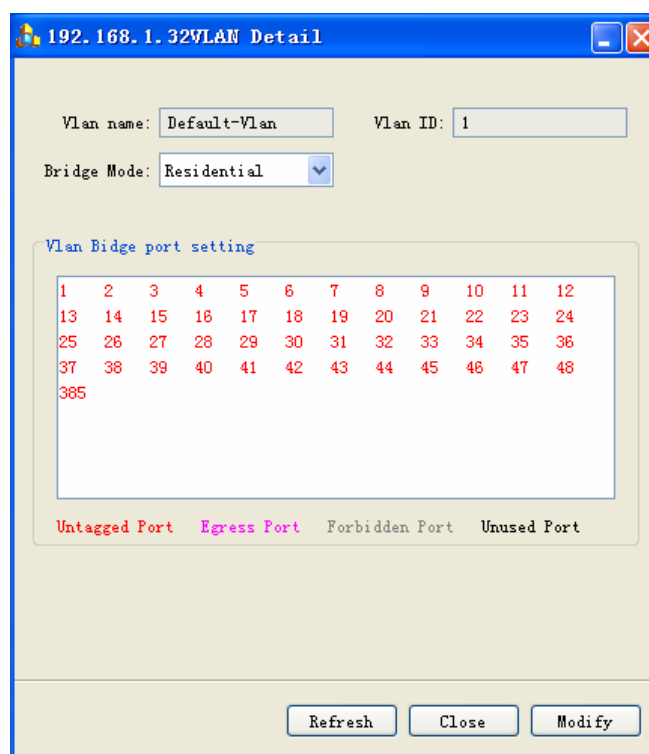


Figure 3-30 VLAN Detail Window

In VLAN Table window, VLAN can be modified.

In Bridge port area, the forwarding status for VLAN is marked by different colors.

Right-click the bridge port, you can change the forwarding status directly.

When you press CTRL or SHIFT button, you can select a couple of bridge ports and change the forwarding properties by right-click menu.

Remove: click Remove button to delete the current VLAN. (the default VLAN can not be deleted).

New: Create a new VLAN window.

3.3.6 Batch Config

Right-click Chassis Panel, and select batch config in the menu, you can configure ADSL parameters by batch.

Currently, the following parameters can be batch configured.

ADSL Enabled: Open/Close ADSL ports (Figure 3-31):

ADSL ConfigProfile: Profile Setting (Figure 3-32)

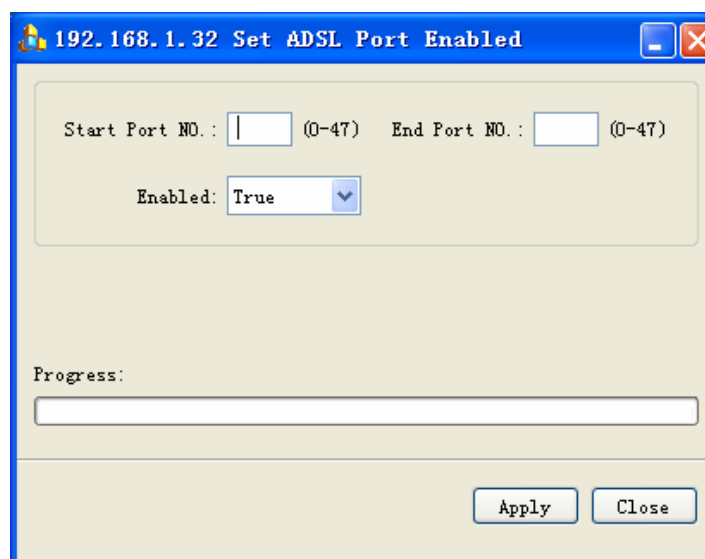


Figure 3-31 ADSL Port Enable window

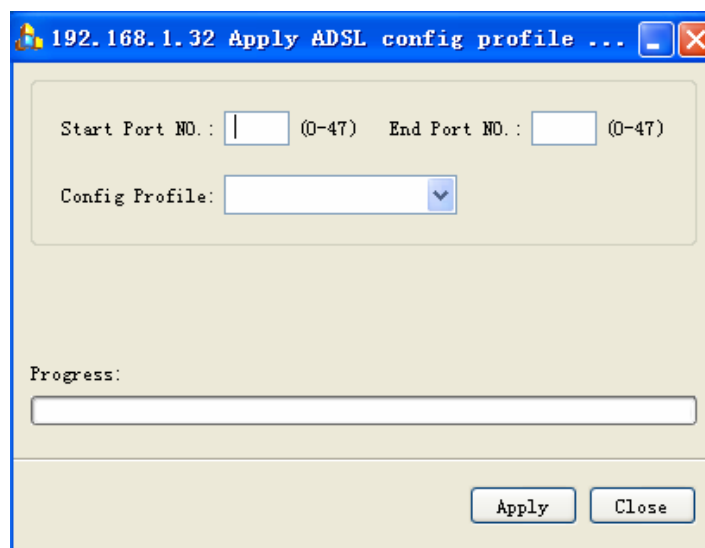


Figure 3-32 ADSL Config Profile window

3.3.7 System Information

To inquire/Modify system information, right-click chassis panel and select **System Information**, the system Information Window appears as shown in Figure 3-33.

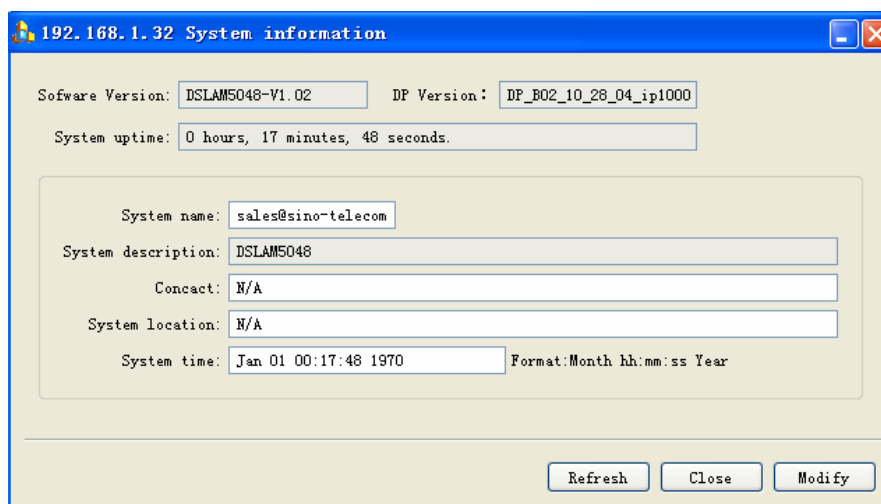


Figure 3-33 System Information window

When you modify system information, please pay attention to Time Format (Month should be input as abbreviation of Month).

To reboot/save system information, right-click chassis panel and select System>Reboot/Save.

3.3.8 MAC forwarding table (FDB)

To inquire MAC address forwarding table, right-click chassis panel and select FDB menu as shown in Figure 3-34.

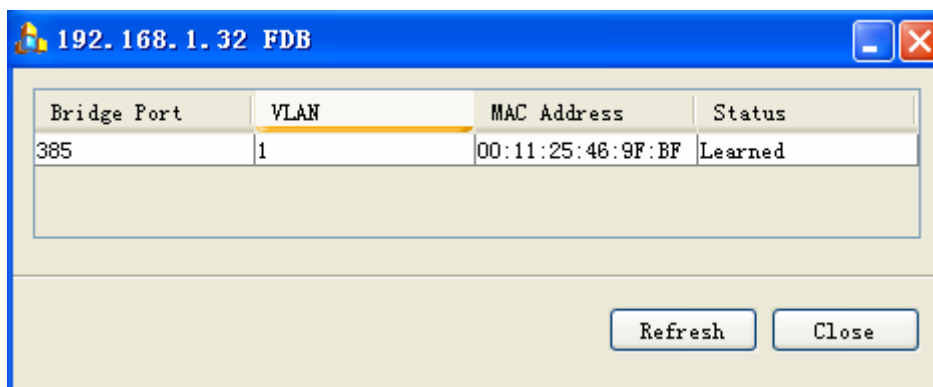


Figure 3-34 FDB Window

3.3.9 Subscriber Information

EMS can save the subscriber's information of DSLAM.

Right-click chassis panel and select subscriber, the User/Customer Information Window appears as shown in Figure 3-35.

All information including subscriber's name, address and telephone etc, can be input or modified. Click **Apply** button to save the subscriber's information.

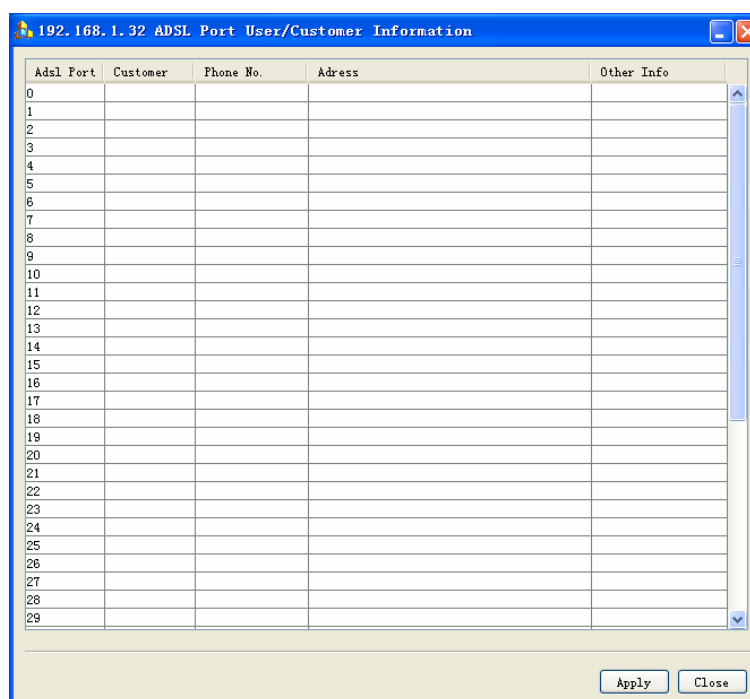


Figure 3-35 User/Customer Information Window

