

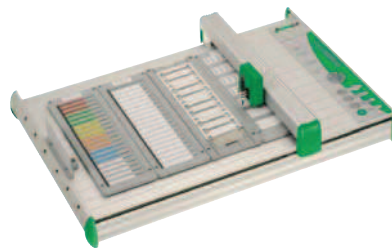
Printing systems and software – Plotter systems EMS

Plotter system EMS-2

A system that fulfils a wide variety of marking and labelling requirements! The **EMS** Easy Marking System series features excellent versatility and ease of use.

- Generous loading capacity: up to 800 markers for the **EMS-2 DIN A3** with 4 inlays; up to 400 markers for the **EMS-2 DIN A4** with 2 inlays.
- Short loading times for various materials, thanks to fast and straightforward exchange of inlays and automatic inlay recognition
- The accompanying labelling software, **CONTA-Sign**, is available in ten languages (German, English, French, Spanish, Hungarian, Italian, Dutch, Polish, Russian, Swedish)
- Free software updates can be downloaded from our web page
- High-quality labelling is ensured by the combination of our **PP** and **PPE** pens and the double-sided plotter arm design.
- Just one inlay for all **CONTA-CLIP** Maxicards
- Automatic calibration eliminates the need for manual adjustments

EMS-2



Type

Type

Cat. no.

Technical data for DIN A3 plotter

Printer type

Drive

Intended use

Max. marker height

Max. plotting area

Command language

Max. plotting speed

Max. printing speed

Dimensions (WxHxD)

Weight

Supply voltage

Interfaces

Pen station

Inlays

Ambient temperature

Qty.

1

EMS-2 Starter Kit DIN A3

1 x EMS-2 Easy Marking System DIN A3 (**1610.0**)

1 x plotter inlay CCI-10 (**1606.0**)

1x disposable plotter pen PPE 0.35 (**1651.0**)

Plotter (DIN A3), power pack, connecting cable (parallel cable and USB cable for connecting the plotter to a PC), software: CONTA-Sign CS in ten languages (German, English, French, Spanish, Hungarian, Italian, Dutch, Polish, Russian, Swedish). Runs on Windows: 2000, XP, Vista, 7

1612.0

Flat bed plotter

Two-phase step motor

Printing markers of various materials and sizes

10.5 mm, custom solutions up to 15 mm

DIN A3, 440 x 305

Based on HP-GL

40 cm /sec.

80 mm /sec.

660 x 125 x 440

Approx. 8 kg

100-240 V AC 50-60 Hz

Centronix / USB Level 1.1

Max. 4 plotter pens

Max. 4 pieces

10°C...35°C

Type

Type

Cat. no.

Printer type

Drive

Intended use

Max. marker height

Max. plotting area

Command language

Max. plotting speed

Max. printing speed

Dimensions (WxHxD)

Weight

Supply voltage

Interfaces

Pen station

Inlays

Ambient temperature

Qty.

1

EMS-2 Starter Kit DIN A4

1 x EMS-2 Easy Marking System DIN A4 (**1631.0**)

1 x plotter inlay CCI-10 (**1606.0**)

1x disposable plotter pen PPE 0.35 (**1651.0**)

Plotter (DIN A3), power pack, connecting cable (parallel cable and USB cable for connecting the plotter to a PC), software: CONTA-Sign CS in ten languages (German, English, French, Spanish, Hungarian, Italian, Dutch, Polish, Russian, Swedish). Runs on Windows: 2000, XP, Vista, 7

9800.0

Flat bed plotter

Two-phase step motor

Printing markers of various materials and sizes

10.5 mm, custom solutions up to 15 mm

DIN A4, 220 x 305

Based on HP-GL

40 cm /sec.

80 mm /sec.

450 x 125 x 440

Approx. 6 kg

100-240 V AC 50-60 Hz

Centronix / USB Level 1.1

Max. 4 plotter pens

Max. 2 pieces

10°C...35°C

Printing systems and software – Inlays for plotter systems EMS

Inlays

CONTA-CLIP's EMS plotter systems allow you to conveniently print on practically any **CONTA-CLIP** marker. **CONTA-CLIP** offers a matching inlay for each marker.

Just pick the appropriate inlay for your marker and you're already on your way.

The **CONTA-Sign** marking software can automatically recognize the inserted inlay; the software can then suggest the appropriate marker to the user.

In addition to our proprietary inlays, **CONTA-CLIP** offers inlays for the standard markers from other manufacturers such as Partex, Phoenix, Wago or Weidmüller.

These are available upon request.

CCI



Type	Cat. no.	Qty.	For holding CONTA-CLIP markers of type
Type	Cat. no.	1	AD 1/5 N
Type	Cat. no.	1	ADQ
Type	Cat. no.	1	KBH-S4
Type	Cat. no.	1	AD 1/5 AD 1/6 AD 1/8 AD 1/16 N
Type	Cat. no.	1	AD 1/2 N
Type	Cat. no.	1	ESO GT 1 ESO GT 2 ESO BST 8 KKE...A4 GKE...A4 GMP... GMA...
Type	Cat. no.	1	MC SB MC BSTR MC MM MC KMS MC ESS MC GS MC GST MC GSU MC KMC
Type	Cat. no.	1	SchT 9 SchT 10 ZSchT 6
Type	Cat. no.	1	KBH-S 21 strip KBH-S 36 strip KBH-S 57 strip KBH-S 84 strip
Type	Cat. no.	1	KBH-S 3/15 strip KBH-S 3/21 strip KBH-S 3/27 strip
Type	Cat. no.	1	KBH 5/15 strip KBH 5/21 strip KBH 5/27 strip
Type	Cat. no.	1	KBH 10/15 KBH 10/21 KBH 10/27 KBH 10/36



Printing systems and software – Thermal-transfer printer TTP

Thermal transfer printer TTP

The **TTP** thermal-transfer printer was designed specifically for marking solutions in systems and switchgear cabinet applications and is very versatile.

- Its speed and robustness make the **TTP** printer ideal for industrial applications.
- Short loading times for various materials, thanks to fast and straightforward exchange of label rolls.
- The accompanying labelling software, **CONTA-Sign**, is available in ten languages (German, English, French, Spanish, Hungarian, Italian, Dutch, Polish, Russian, Swedish)
- Free software updates can be downloaded from our web page
- The **TTP** can be used to print on **GKE** and **KKE** labels quickly and simply.

TTP



Type

Type

Cat. no.

Technical data

Printer type	Thermal transfer
Intended use	Printing of labels
Max. label width	110 mm
Min. label width	15 mm
Print width	104 mm
Max. printing height	750 mm
Min. label height	6 mm
Resolution	200 dpi
Max. printing speed	50 - 80 mm/sec
Dimensions (W x H x D)	230 x 230 x 350
Weight	ca. 9 kg
Supply voltage	230 V AC / 50 Hz (optional 115 V AC / 60 Hz)
Interfaces	RS232 C / USB 1.1
Barcodes	EAN 8, EAN 13, EAN 128, Code 39, Code 39 extended, Code 128, Code 2/5 interleaved
Diameter of label role core	75 mm (40 mm optional)
Max. diameter of roll	180 mm

TTP accessories

Cat. no.	Type
1641.0	TTP film
1639.0	TTP cleaning set

TTP Starter Kit

1 x TTP-Printer (**1640.0**)
 1 x TTP film (**1641.0**)
 Thermal-transfer printer TTP, including power cable, printer driver and software CONTA-Sign CS in ten languages (German, English, French, Spanish, Hungarian, Italian, Dutch, Polish, Russian, Swedish), runs under Windows: 2000, XP, Vista, 7. Connection cable (USB cable), label attacher (75-mm diameter)

1644.0

Overview

Roll of thermal-transfer film, 110 mm x 300 mm (outside with colour) industrial quality
 1 print head and drum cleaner, 250 ml
 1 compressed air for cleaning the photoelectric sensor, 200 ml
 22 wipes, 5 cleaning spatulas, 2 cleaning cards, 1 cleaning file for print head,
 1 label solvent spray, 200 ml

Qty.

1

Printing systems and software – Plotter and printing pens

Plotter and printing pens

CONTA-CLIP offers a complete line of plotter pens and hand pens for labelling all types of markers and adhesive labels. The reusable **PP** pens are available in six different line widths and can be refilled using the **TP** ink cartridge. The disposable **PPE** pen is an affordable and long-lasting alternative to the **PP** pen. This pen is available with six line widths. The HP hand pen can be used to label quickly and easily without a plotter. The **TP** ink cartridges can be used to refill it. It is available in four different line widths.




The **PPE Ink-ED** does not dry out even if it has not been used for a long time, but is not suitable for marking outside of the switchgear cabinet because it is not resistant to smearing. Additional ink colours and line widths for the **PPE INK-ED** are available on request.

		PP.. 0.18	PP../HP 0.25	PP../HP 0.35
Type				
Type				
Cat. no.	Disposable	PPE 0.18 mm 1649.0	PPE 0.25 mm 1650.0	PPE 0.35 mm 1651.0
Type				
Cat. no.	Disposable	PPE Ink-ED 0.18 mm 9820.0	PPE Ink-ED 0.25 mm 9821.0	PPE Ink-ED 0.35 mm 9822.0
Type				
Cat. no.	Reusable	PP 0.18 mm 1586.0	PP 0.25 mm 1587.0	PP 0.35 mm 1588.0
Type				
Cat. no.	Reusable		HP 0.25 mm 1316.0	HP 0.35 mm 1317.0
Characteristics				
General				
Line width, mm		0.18	0.25	0.35
Colour code		red	white	yellow
Ink colour		black	black	black
Storage				
Storage temperature °C °F		+5°C to +20°C +41°F to +68°F	+5°C to +20°C +41°F to +68°F	+5°C to +20°C +41°F to +68°F
Storage at rel. humidity level of:		30% to 60%	30% to 60%	30% to 60%
Application				
For labelling of:		Plastic	Plastic	Plastic
Characteristics		Quick-drying, smudge-proof*, non-fading	Quick-drying, smudge-proof*, non-fading	Quick-drying, smudge-proof*, non-fading
Plotter / Plotter pen holder		yes (PPE/PP) / yes (PPE/PP)	yes (PPE/PP) / yes (PPE/PP)	yes (PPE/PP) / yes (PPE/PP)
Accessories				
Ink cartridge for PP / HP (TP)		TP (5 x 1ml) 1595.0	TP (5 x 1ml) 1595.0	TP (5 x 1ml) 1595.0
Cat. no.		409	409	409
Pressure ball for plotter pen		Pressure ball 1630.0	Pressure ball 1630.0	Pressure ball 1630.0
Cat. no.		409	409	409
Cleaning container		CC-1 1597.0	CC-1 1597.0	CC-1 1597.0
Cat. no.		409	409	409
Pen cleaner		PC-1 1598.0	PC-1 1598.0	PC-1 1598.0
Cat. no.		409	409	409
		PPP 0.18	PPP 0.25	PPP 0.35

The **PPP** paper plotter pen is particularly well suited for labelling paper. It is designed for use with the **TPP** ink, which is particularly suitable for paper. The **PMP** permanent pen is an affordable pen that is primarily used for test purposes.

The **BS-1** marker pen is good for easy labelling tasks that are carried out on-site.

They can also be used with an adapter on a plotter.

				
		Paper plotter pen / reusable, 0.18 mm	Paper plotter pen / reusable, 0.25 mm	Paper plotter pen / reusable, 0.35 mm
Type				
Type				
Cat. no.	Disposable	PPP 0.18 mm 1615.0	PPP 0.25 mm 1616.0	PPP 0.35 mm 1617.0
Type				
Cat. no.	Reusable			
Characteristics				
General				
Line width, mm		0.18	0.25	0.35
Colour code		red	white	yellow
Ink colour		black	black	black
Storage				
Storage temperature °C °F		+5°C to +20°C +41°F to +68°F	+5°C to +20°C +41°F to +68°F	+5°C to +20°C +41°F to +68°F
Storage at rel. humidity level of:		30% to 60%	30% to 60%	30% to 60%
Application				
For labelling of:		Paper	Paper	Paper
Characteristics		smudge-proof	smudge-proof	smudge-proof
Plotter / Plotter pen holder		yes / yes	yes / yes	yes / yes
Accessories				
Ink cartridge for PPP (TPP)/plotter adapter		TPP (5 x 1ml) 1614.0	TPP (5 x 1ml) 1614.0	TPP (5 x 1ml) 1614.0
Cat. no.		409	409	409

*1: with plotter adapter *2: PE INK-ED only smear resistant

PP../HP 0.5	PP../HP 0.70	PP..1.00		
				
Disposable plotter pen, 0.50 mm Reusable plotter pen, 0.50 mm Reusable hand pen, 0.50 mm	Disposable plotter pen, 0.70 mm Reusable plotter pen, 0.70 mm Reusable hand pen, 0.70 mm	Disposable plotter pen, 1.00 mm Reusable plotter pen, 1.00 mm		
Qty.	Qty.	Qty.	Qty.	Qty.
PPE 0.5 mm 1652.0 1	PPE 0.7 mm 1653.0 1	PPE 1.0 mm 1654.0 1		
PPE Ink-ED 0.5 mm 9823.0 1	PPE Ink-ED 0.7 mm 9824.0 1	PPE Ink-ED 1.0 mm 9825.0 1		
PP 0.5 mm 1589.0 1	PP 0.7 mm 1590.0 1	PP 1.0 mm 1591.0 1		
HP 0.5 mm 1318.0 1	HP 0.7 mm 1319.0 1			
0.50	0.70	1.00		
brown	blue	orange		
black	black	black		
+5°C to +20°C +41°F to +68°F 30% to 60%	+5°C to +20°C +41°F to +68°F 30% to 60%	+5°C to +20°C +41°F to +68°F 30% to 60%		
Plastic	Plastic	Plastic		
Quick-drying, smudge-proof, non-fading yes (PPE/PP) / yes (PPE/PP)	Quick-drying, smudge-proof, non-fading yes (PPE/PP) / yes (PPE/PP)	Quick-drying, smudge-proof, non-fading yes (PPE/PP) / yes (PPE/PP)		
Page Qty.	Page Qty.	Page Qty.		
TP (5 x 1ml) 1595.0 409 1	TP (5 x 1ml) 1595.0 409 1	TP (5 x 1ml) 1595.0 409 1		
Pressure ball 1630.0 409 1	Pressure ball 1630.0 409 1	Pressure ball 1630.0 409 1		
CC-1 1597.0 409 1	CC-1 1597.0 409 1	CC-1 1597.0 409 1		
PC-1 1598.0 409 1	PC-1 1598.0 409 1	PC-1 1598.0 409 1		
PPP 0.50	PPP 0.70	PPP 1.00	BS-1	
				
Paper plotter pen / reusable, 0.50 mm	Paper plotter pen / reusable, 0.70 mm	Paper plotter pen/ reusable, 1.00 mm	Labelling pen 0.4 mm	
Qty.	Qty.	Qty.	Qty.	
PPP 0.50 mm 1618.0 1	PPP 0.70 mm 1619.0 1	PPP 1.00 mm 1620.0 1	BS-1 2034.0 1	
0.50	0.70	1.00	0.40	
brown	blue	orange	-	
black	black	black	black	
+5°C to +20°C +41°F to +68°F 30% to 60%	+5°C to +20°C +41°F to +68°F 30% to 60%	+5°C to +20°C +41°F to +68°F 30% to 60%	+5°C to +20°C +41°F to +68°F 30% to 60%	
Paper	Paper	Paper	Plastic / paper	
Smudge-proof	Smudge-proof	Smudge-proof	Water-proof and smudge-proof	
yes / yes	yes / yes	yes / yes	yes* ¹ / yes* ¹	
Page Qty.	Page Qty.	Page Qty.	Page Qty.	
TPP (5 x 1ml) 1614.0 409 1	TPP (5 x 1ml) 1614.0 409 1	TPP (5 x 1ml) 1614.0 409 1	Adapter BS-1 2000.0 413 1	

Labelling systems and software – Labelling software CONTA-Sign

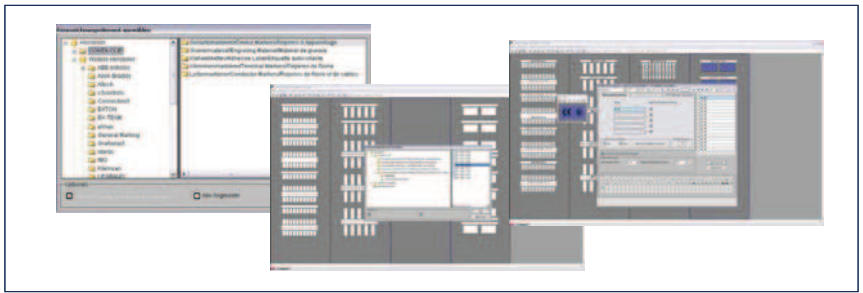
Labelling software CONTA-Sign

The Windows-based **CONTA-Sign** software was specially developed to produce professional marking solutions for systems and switchgear cabinet applications. This **CONTA-Sign** software can be used to control the **EMS-2** plotters (A3, A4 and eco). It can also be used with printing on heat-transfer roll printers (**TTP**) or with Windows-based printers. This software can be used to print on almost all of the markers that **CONTA-CLIP** delivers.

CONTA-Sign can be used to easily print text, barcodes or graphics on the markers.

The **CONTA-Sign** software is available in ten languages.

CONTA-Sign



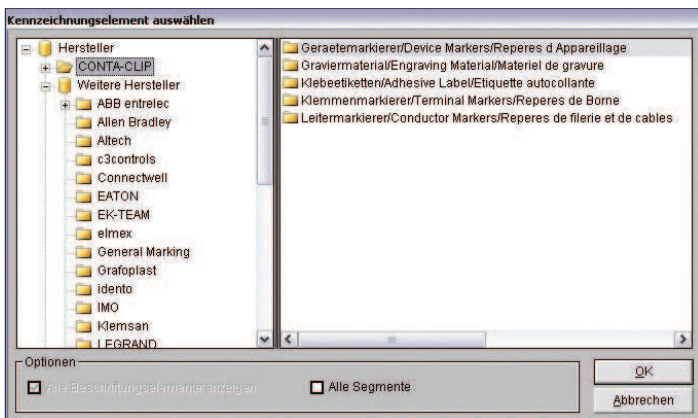
System requirements

- CPU
- RAM
- Drives
- Screen resolution
- Operating system
- Peripherals
- Languages

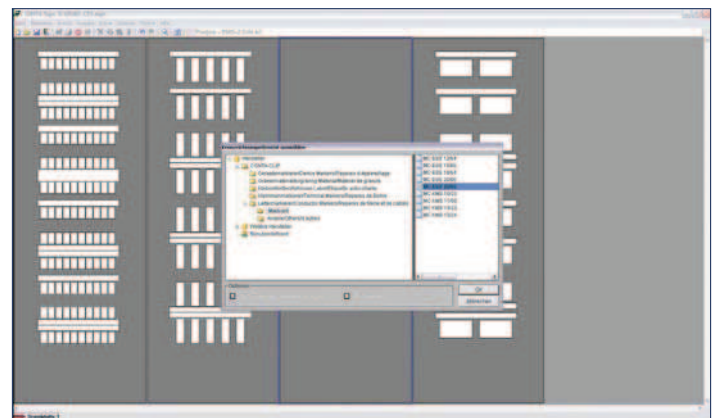
- > Pentium II, 200 MHz
- 64 MB RAM
- CD-ROM
- 640 x 480 Pixels, we recommend at least 1024 x 768 pixels
- Windows: 98, ME, NT, 2000, XP, Vista, 7
- Keyboard and mouse
- German, English, French, Spanish, Hungarian, Italian, Dutch, Polish, Russian, Swedish

Features

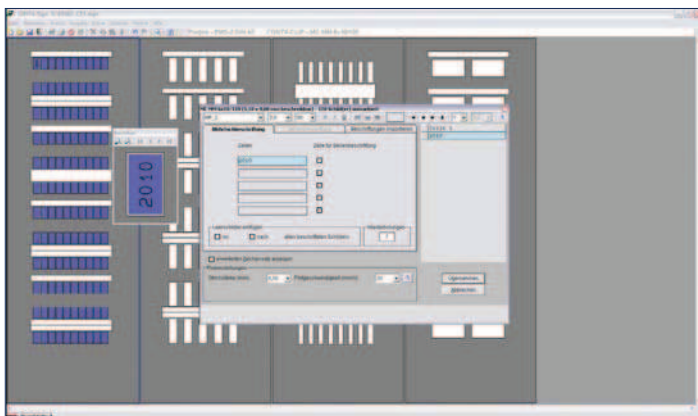
An import option is available for importing labelling specifications from project engineering software. Uncomplicated, retroactive processing of imported data in the software. Numerous user-friendly functions simplify manual input. Intuitive operation supports single, multiple and batch markings. Create individual markers using the marker design function. The pitch correction function guarantees faultless centering of labelling information even with large deviation in the material tolerances. Electronics symbols and special characters are included with the software. Open programming means that the markers of different manufacturers are installed in the software as standard



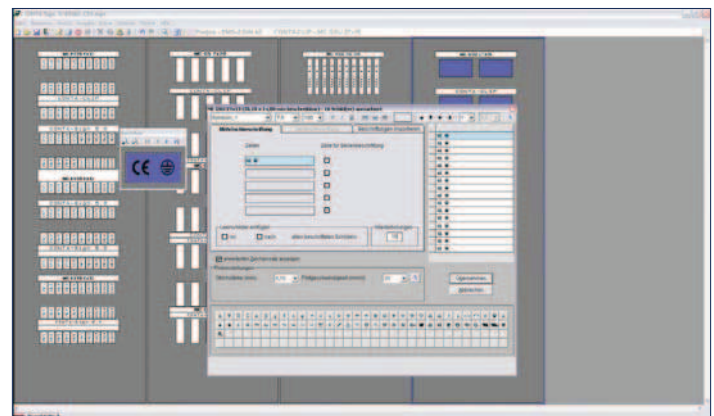
It is easy to select **CONTA-CLIP** markers or markers from other manufacturers



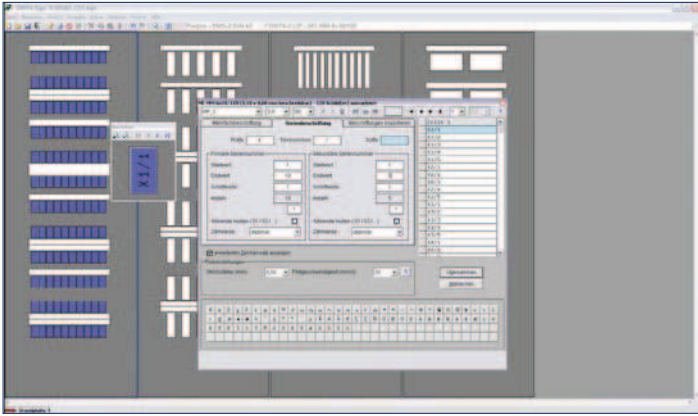
A variety of different markers in one project



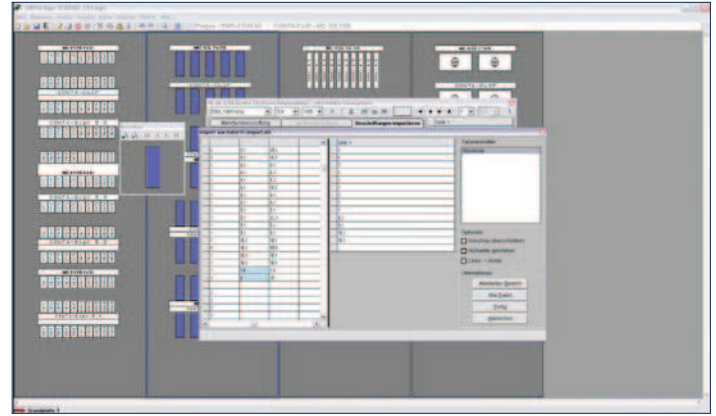
Number and letters are easy to enter



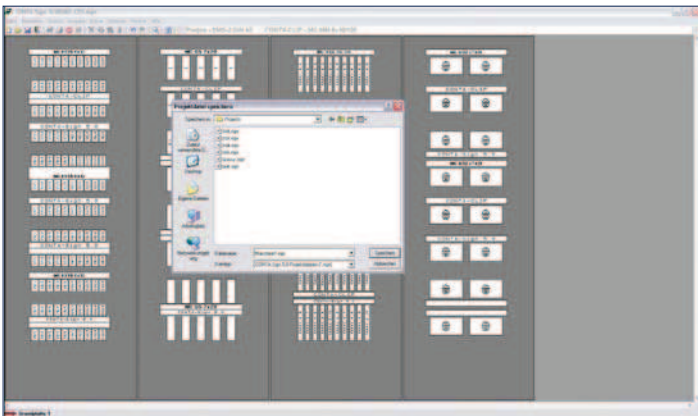
Many different electronic symbols are available by default



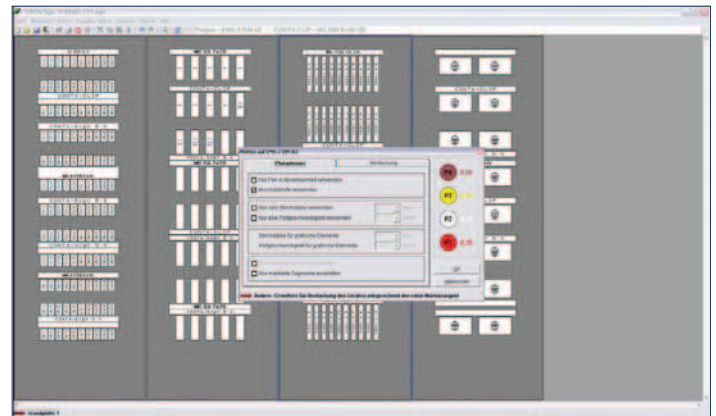
Batch entry



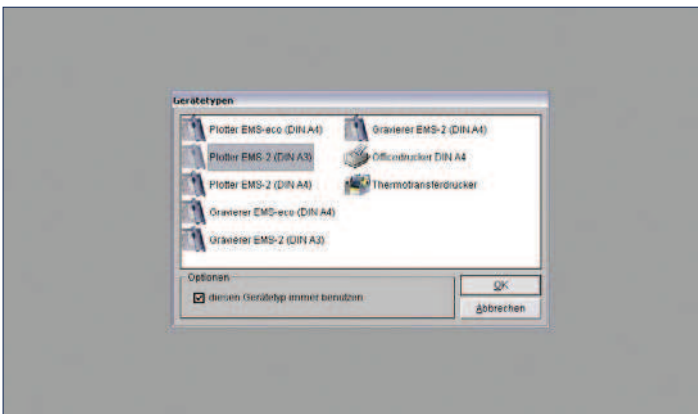
CAD/CAE, E-plan, plain text, Excel and Access formats can be imported



Projects can be created and saved



The EMS-2 plotter is easy to operate using the software



One software program for many different output devices

The user's manual contains a detailed description of the software functions. The manual can be downloaded for free from our web site at www.conta-clip.com.