

WINCOR
NIXDORF

BIOS Setup

BEETLE *liPRINT*

User Manual

We would like to know your opinion on this publication.

Please send us a copy of this page if you have any constructive criticism.
We would like to thank you in advance for your comments.

With kind regards,

Your opinion:

Wincor Nixdorf International GmbH
Technical Documentation RD HWD01
Wohlrabedamm 31
D-13629 Berlin
E-Mail: retail.documentation@wincor-nixdorf.com

Order No.: **01750226470A**

BIOS Setup

BEETLE */iPRINT*

User Manual

Edition October 2011

All brand and product names mentioned in this document are trademarks of their respective owners.

Copyright© Wincor Nixdorf International GmbH, 2011

The reproduction, transmission or use of this document or its contents is not permitted without express authority.
Offenders will be liable for damages.

All rights, including rights created by patent grant or registration of a utility model or design, are reserved.

Delivery subject to availability; technical modifications possible.

Contents

BEETLE /iPRINT Setup Utility	1
Starting the BIOS	1
Setup Menu	2
Navigation	3
Main Setup	6
System Time/System Date	6
Advanced BIOS Setup	7
CPU Configuration.....	8
Wake Up Configuration.....	9
H/W Monitor.....	10
Boot Configuration.....	11
Security Setup	12
Password Support	12
Change Supervisor Password	13
Change User Password.....	13
Clear User Password.....	14
Exit Menu	14

BEETLE /iPRINT Setup Utility

The following chapter describes basic navigation for the BEETLE /iPRINT BIOS setup utility.

Starting the BIOS

To enter the setup screen, follow these steps:

1. Power on the system
2. Press the “Delete” or “F2” key on your keyboard when you see the following text prompt:

“Press or <F2> to enter setup.....”

3. After having pressed one of these keys the main BIOS setup menu displays.

The image shows a screenshot of the American Megatrends BIOS setup utility main menu. At the top left is the American Megatrends logo, a red pyramid shape, with the website address www.ami.com below it. To the right of the logo, the text "American Megatrends" is displayed in a large, stylized font. Below the logo and company name, the following system information is displayed: "Version 2.11.1210. Copyright (C) 2010 American Megatrends, Inc.", "BIOS Date: 09/27/2011 11:39:38, Released By ADLINK.", "Product: BEETLE/iPRINT", "BIOS: WN iP1 00/13 09/27/2011", "CPU: Genuine Intel(R) CPU @ 1.00GHz Speed:1000MHz", "Total Memory: 1024MB (DDR2)", and "Ethernet MAC Address: 00:11:22:33:44:55". Below this information, the following USB device information is displayed: "USB Devices total: 1 KBDs, 0 MICE, 1 MASS, 0 HUBs" and "USB MASS #0: Generic Flash Disk 8.07". At the bottom of the screen, the prompt "Press or <F2> to enter setup or <ESC> to continue to boot." is displayed. A small green cursor is visible at the bottom left of the screen.

You can now access the other setup screens from the BIOS setup main menu, such as the Chipset and the Power menu.

Setup Menu

The main BIOS setup menu is the first screen that you can navigate. Each main BIOS setup menu option is described in this user's guide.

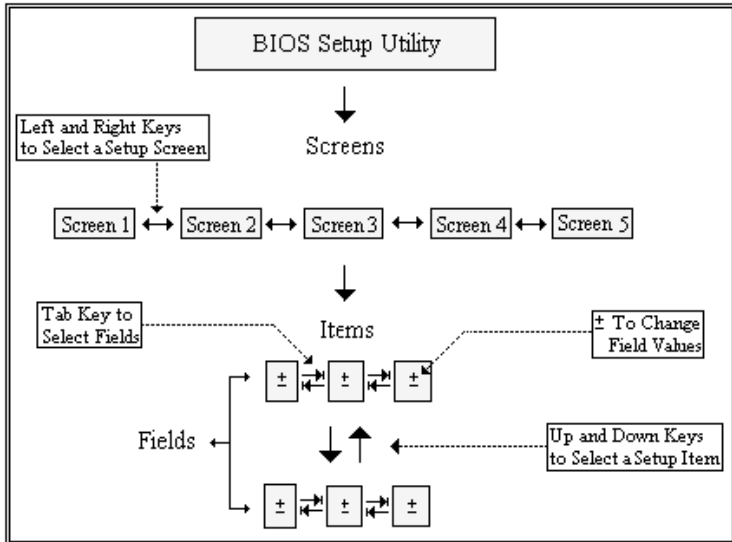
The Main BIOS setup menu screen has two main frames. The left frame displays all the options that can be configured. "Grayed" options cannot be configured, "Blue" options can be.

The right frame displays the key legend. Above the key legend is an area reserved for a text message. When an option is selected in the left frame, it is highlighted in white. Often a text message will accompany it.

```
NanoX_TC Rev:Bi013
Main Advanced Boot Security Save & Exit
-----
| BIOS Information                               |Set the Date. Use Tab
| Product name      BEETLE /iPRINT               |to switch between Data
| BIOS version/BIOS rel  00/13 09/23/2011      |elements.
| Ethernet MAC Address  00:00:00:00:00:00      |
|
| Memory Information                               |
| Total Memory         1024 MB (DDR2)           |
|
| System Date           [Thu 01/01/2009]        |
| System Time           [00:19:40]             |
|
|-----|
|>: Select Screen
|^v: Select Item
|Enter: Select
|+/-: Change Opt.
|F1: General Help
|F2: Previous Values
|F3: Optimized Defaults
|F4: Save & Exit
|ESC: Exit
-----
Version 2.11.1210. Copyright (C) 2011 American Megatrends, Inc.
```

Navigation

The BIOS setup/utility uses a key-based navigation system called 'hot keys'. Most of the BIOS setup utility hot keys can be used at any time during the setup navigation process. These keys include < F1 >, < F10 >, < Enter >, < ESC >, < Arrow > keys, and so on.



Note: There is a hot key legend located in the right frame on most setup screens.

→← Left/Right. The *Left and Right* < Arrow > keys allow you to select a Setup screen.
For example: Main screen, Advanced screen, Chipset screen, and so on.

↑↓ Up/Down The *Up and Down* < Arrow > keys allow you to select a setup item or sub-screen.

+− Plus/Minus The *Plus and Minus* < Arrow > keys allow you to change the field value of a particular setup item.
For example: Date and Time.

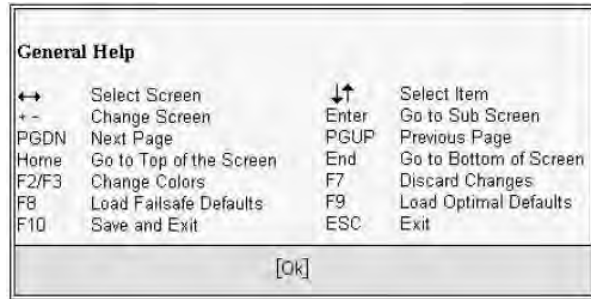
Tab The < Tab > key allows you to select setup fields.

Note: The < F8 > key on your keyboard is the Fail-Safe key. It is not displayed on the key legend by default. To set the Fail-Safe settings of the BIOS, press the < F8 > key on your keyboard. It is located on the upper row of a standard 101 keyboard. The Fail-Safe settings allow the motherboard to boot up with the least amount of options set. This can lessen the probability of conflicting settings.

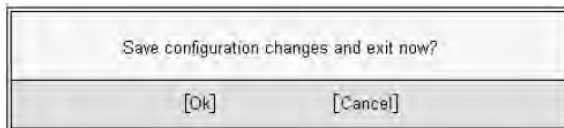
Hot Key Description

F1 The < F1 > key allows you to display the General Help screen.

Press the < F1 > key to open the General Help screen.



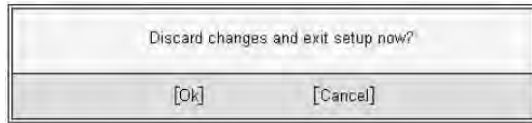
F10 The < F10 > key allows you to save any changes you have made and exit Setup. Press the < F10 > key to save your changes. The following screen will appear:



Press the < Enter > key to save the configuration and exit. You can also use the < Arrow > key to select *Cancel* and then press the < Enter > key to abort this function and return to the previous screen.

ESC

The < ESC > key allows you to discard any changes you have made and exit the Setup. Press the < ESC > key to exit the setup without saving your changes. The following screen will appear:



Press the < Enter > key to discard changes and exit. You can also use the < Arrow > key to select Cancel and then press the < Enter > key to abort this function and return to the previous screen.

Enter

The < Enter > key allows you to display or change the setup option listed for a particular setup item. The < Enter > key can also allow you to display the setup sub-screens.

Main Setup

When you first enter the Setup Utility, you will enter the Main setup screen. You can always return to the Main setup screen by selecting the Main tab. There are two Main Setup options. They are described in this section. The Main BIOS Setup screen is shown below.

```
NanoX_TC Rev:Bi013
Main Advanced Boot Security Save & Exit
-----
BIOS Information
Product name          BEETLE /iPRINT
BIOS version/BIOS rel 00/13 09/23/2011
Ethernet MAC Address  00:00:00:00:00:00
Memory Information
Total Memory          1024 MB (DDR2)
System Date           [Thu 01/01/2009]
System Time           [00:19:40]
-----
|Set the Date. Use Tab
|to switch between Data
|elements.
-----
|><: Select Screen
|^v: Select Item
|Enter: Select
|+/-: Change Opt.
|F1: General Help
|F2: Previous Values
|F3: Optimized Defaults
|F4: Save & Exit
|ESC: Exit
-----
Version 2.11.1210. Copyright (C) 2011 American Megatrends, Inc.
```

System Time/System Date

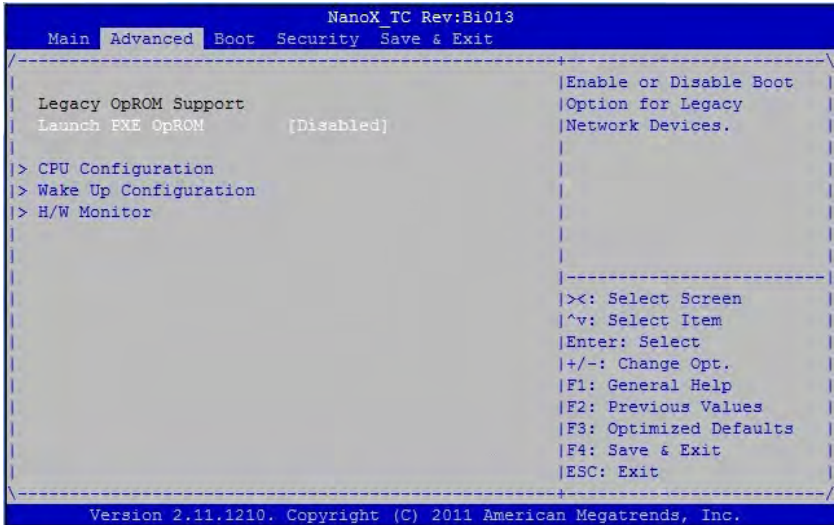
Use this option to change the system time and date. Highlight *System Time* or *System Date* using the < Arrow > keys. Enter new values using the keyboard. Press the < Tab > key or the < Arrow > keys to move between fields. The date must be entered in MM/DD/YY format. The time is entered in HH:MM:SS format.

Note: The time is in 24-hour format. For example, 5:30 A.M. appears as 05:30:00, and 5:30 P.M. as 17:30:00.

Advanced BIOS Setup

Select the *Advanced* tab from the setup screen to enter the Advanced BIOS Setup screen. You can select any of the items in the left frame of the screen to go to the sub menu for that item. You can display an Advanced BIOS Setup option by highlighting it using the < Arrow > keys. The Advanced BIOS Setup screen is shown below.

The sub menus are described on the following pages.

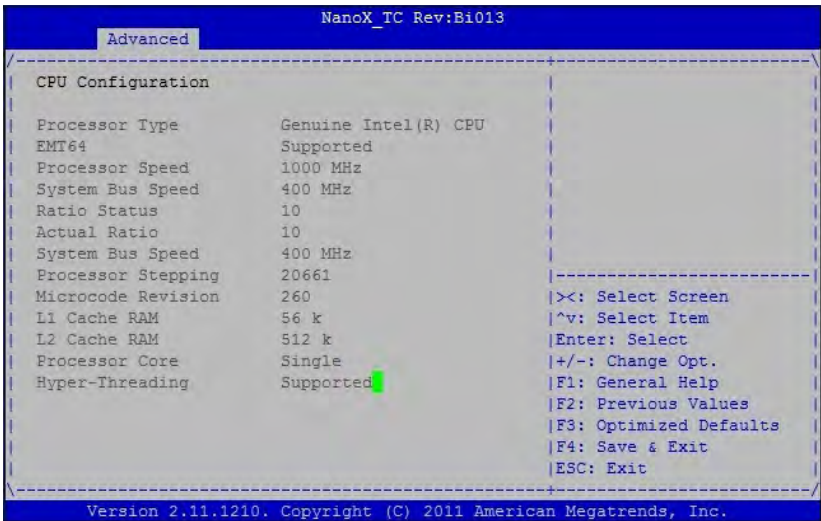


Launch PXE OpROM

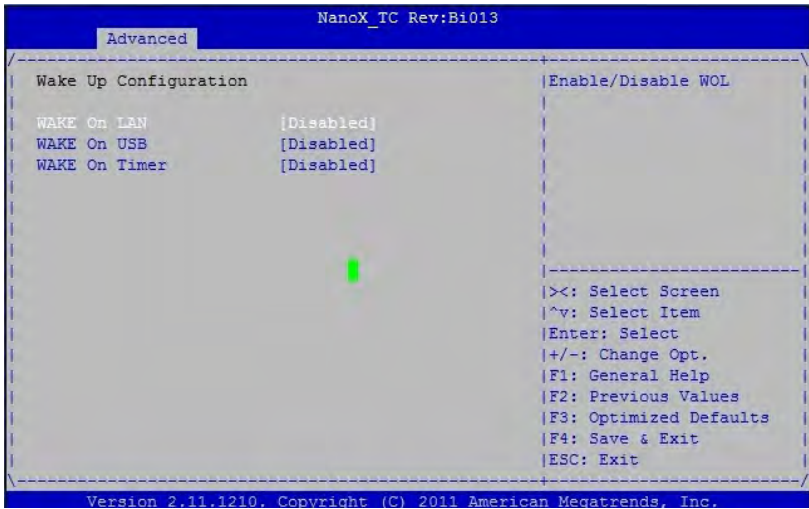
Boot Option for Legacy Network Devices. Set this value to Enabled/Disabled.

CPU Configuration

You can use this screen to select options for CPU Configuration. Use the up and down < Arrow > keys to select an item. Use the < + > and < - > keys to change the value of the selected option. A description of the selected item appears on the right side of the screen. The settings are described on the following pages. An example of the CPU Configuration screen is shown below.



Wake Up Configuration



Wake On LAN

Enable/Disable Wake On LAN function from S3/S4/S5.

Wake On USB

Enable/Disable Wake On LAN function from S3/S4

Wake On Timer

Use the external RTC to Wake On Time; can set Month, Day, Hour, Min and Second.

H/W Monitor

The H/W monitor shows the CPU temperature from the LM96163 chip. Local temperature and voltage are from the F75387 chip on the carrier.

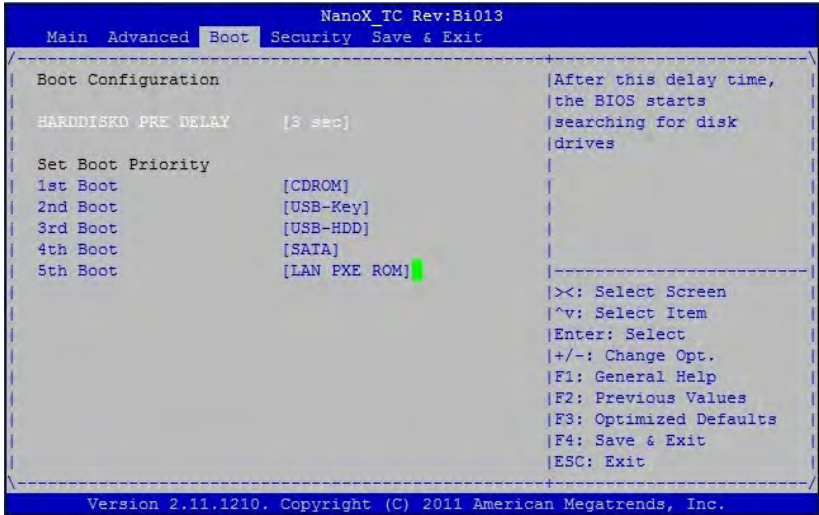
```
NanoX_TC Rev:Bi013
Advanced
-----
IM96163 Monitor
CPU Temperature      N/A

F75387 Monitor
Local Temperature    N/A
24V                  N/A
5V                   N/A
3.3V                 N/A

-----
|><: Select Screen
|^v: Select Item
|Enter: Select
|+/-: Change Opt.
|F1: General Help
|F2: Previous Values
|F3: Optimized Defaults
|F4: Save & Exit
|ESC: Exit
-----
Version 2.11.1210. Copyright (C) 2011 American Megatrends, Inc.
```

Boot Configuration

Select the Boot tab from the setup screen to enter the Boot Configuration screen. You can select any of the items in the left frame of the screen to go to the sub menu for that item. You can display a Boot Configuration option by highlighting it using the < Arrow > keys. The Boot Configuration screen is shown below:



HARDDISKD PRE Delay

After this delay time, the BIOS starts searching for disk drives. Options: 0, 3, 6, 9, 12, 15 sec.

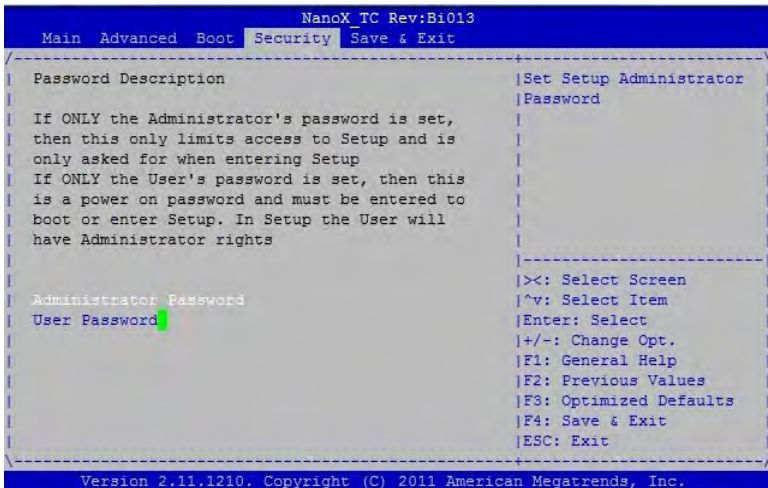
Set Boot Priority

Determines the sequence in which the computer checks which device to boot from.

Default setting by customer request:

- 1st Boot [CDROM]
- 2nd Boot [USB-Key]
- 3rd Boot [USB-HDD]
- 4th Boot [SATA]
- 5th Boot [LAN PXE ROM]

Security Setup



Password Support

Two Levels of Password Protection

Provides both a Administrator and a User password. If you use both passwords, the Supervisor password must be set first.

The system can be configured so that all users must enter a password every time the system boots or when Setup is executed, using either or either the Supervisor password or User password.

The Supervisor and User passwords activate two different levels of password security. If you select password support, you are prompted for a one to six character password. Type the password on the keyboard. The password does not appear on the screen when typed. Make sure you write it down. If you forget it, you must drain NVRAM and re-configure.

Remember the Password

Keep a record of the new password when the password is changed. If you forget the password, you must erase the system configuration information in NVRAM.

Select Security Setup from the Setup main BIOS setup menu. Security Setup options, such as password protection and virus protection, are described in this section. To access the sub menu for the following items, select the item and press < Enter >.

Supervisor Password

Indicates whether a supervisor password has been set.

User Password

Indicates whether a user password has been set.

Change Supervisor Password

Select this option and press < Enter > to access the sub menu. You can use the sub menu to change the supervisor password.

Change User Password

Select this option and press < Enter > to access the sub menu. You can use the sub menu to change the user password.

Clear User Password

Select this option and press < Enter > to access the sub menu. You can use the sub menu to clear the user password.

Change Supervisor Password

Select Change Supervisor Password from the Security Setup menu and press < Enter >.

Enter New Password:

Type the password and press < Enter >. The screen does not display the characters entered. Retype the password as prompted and press < Enter >. If the password confirmation is incorrect, an error message appears. The password is stored in NVRAM after setup completes.

Change User Password

Select Change User Password from the Security Setup menu and press < Enter >.

Enter New Password:

Type the password and press < Enter >. The screen does not display the characters entered. Retype the password as prompted and press < Enter >. If the password confirmation is incorrect, an error message appears. The password is stored in NVRAM after setup completes.

Clear User Password

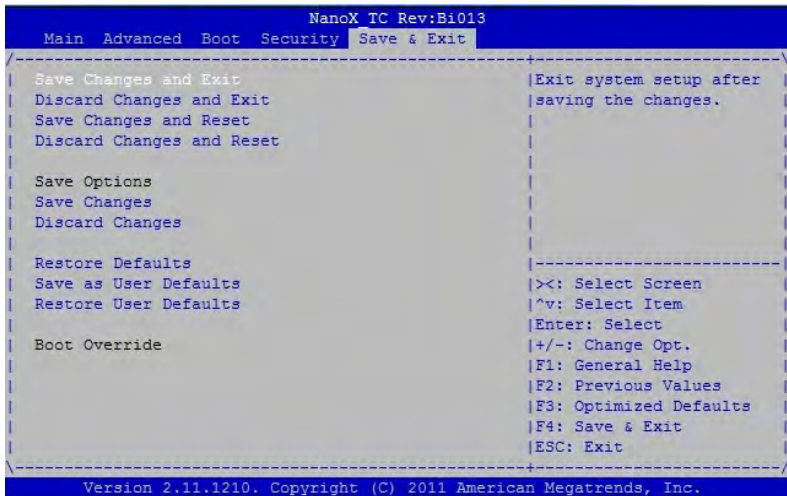
Select Clear User Password from the Security Setup menu and press < Enter >.

Clear New Password
[Ok] [Cancel]

Type the password and press < Enter >. The screen does not display the characters entered. Retype the password as prompted and press < Enter >. If the password confirmation is incorrect, an error message appears. The password is stored in NVRAM after setup completes.

Exit Menu

Select the *Exit* tab from the setup screen to enter the Exit BIOS Setup screen. You can display an Exit BIOS Setup option by highlighting it using the < Arrow > keys. The Exit BIOS Setup screen is shown below.



Save Changes and Exit

When you have completed the system configuration changes, select this option to leave Setup and reboot the computer so the new system configuration parameters can take effect. Select Exit Saving Changes from the Exit menu and press < Enter >.

Save Configuration Changes and Exit Now?

[Ok] [Cancel]

appears in the window. Select Ok to save changes and exit.

Discard Changes and Exit

Select this option to quit Setup without making any permanent changes to the system configuration. Select Exit Discarding Changes from the Exit menu and press <Enter>.

Discard Changes and Exit Setup Now?

[Ok] [Cancel]

appears in the window. Select Ok to discard changes and exit.

Save Changes and Reset

Reset the system after saving the changes.

Discard Changes and Reset

Reset system setup without saving any changes.

Save Changes

Save Changes done so far to any of the setup options.

Discard Changes

Select Discard Changes from the Exit menu and press < Enter >.

Select Ok to discard changes.

Restore Defaults

Restore/Load Defaults values for all the setup options.

Save as user Defaults

Save the changes done so far as User Defaults.

Restore user Defaults

Restore the User Defaults to all the setup options.

Load Optimal Defaults

Automatically sets all Setup options to a complete set of default settings when you Select this option. The Optimal settings are designed for maximum system performance, but may not work best for all computer applications.

In particular, do not use the Optimal Setup options if your computer is experiencing system configuration problems.

Select Load Optimal Defaults from the Exit menu and press < Enter >.

Select Ok to load optimal defaults.

Load Failsafe Defaults

Automatically sets all Setup options to a complete set of default settings when you Select this option. The Failsafe settings are designed for maximum system stability, but not maximum performance. Select the Fail-Safe Setup options if your computer is experiencing system configuration problems.

Select Load Fail-Safe Defaults from the Exit menu and press < Enter >.

Load Fail-Safe Defaults?

[Ok] [Cancel] appears in the window.

Select Ok to load Fail-Safe defaults.

Wincor Nixdorf International GmbH
D-33094 Paderborn

Order No. / Bestell-Nr.: **01750226470A**