



Provo
Craft™

English	
Meet the Designer	4
Advanced Features	5
Quick Start Project	7
Français	
Se retrouver avec le Dessinateur	9
Fonctions Avancées	10
Projet de Commencement Rapide	12
Español	
Encuentro con el Diseñador	14
Funciones Avanzadas	15
Proyecto de Iniciación Rápida	17

Deutsch	
Lernen Sie den Designer kennen	19
Erweiterte Features	20
Schnellstartprojekt	22
Icon Gallery	
Icon Gallery	24
Galerie d'icônes	25
Contact Us	
Contact Us	78
Contactez-nous	79
Galería de Iconos	
Galería de Iconos	26
Bildergalerie	
Bildergalerie	27
Contactátenos	
Contactátenos	80
Verbinden Sie sich mit uns	
Verbinden Sie sich mit uns	81

For complete instructions see your Cricut™ User Manual or visit www.cricut.com
 Pour des instructions complètes veuillez vous référer au Manuel de l'Utilisateur Cricut™ ou visiter le site www.cricut.com
 Para instrucciones detalladas refiérase a su Manual del Usuario Cricut™ o visite la página www.cricut.com
 Finden Sie vollständige Anweisungen in Ihrem Cricut™ Benutzerhandbuch oder besuchen Sie www.cricut.com

The characters on the Cuttin' Up™ cartridge were designed by: **rob and bob studio™**

First of all, yes, Rob and Bob are our real names. But we share much more in common than just our rhyming names. We love color, contemporary design and pattern, combined with a touch of whimsy. The paper crafting market has allowed us to combine all these passions into one incredible line. We serendipitously came to the paper crafting industry seven years ago and it's been non-stop fun ever since.

Before our entrée into the scrapbook market, Rob was a professional illustrator living in New York and Bob was an art director in the advertising field. Bored with our lives of glamour and style in the Big Apple, we became restless, looking for something new and different. We found it in the wonderful, wacky world of scrapbooking. We hope you have as much fun creating with our art as we had designing it. We believe that our art truly comes to life in the hands of creative people like you.

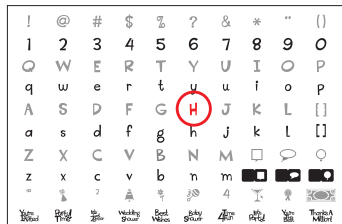
Rob and Bob design for a wide range of products including home décor, stationery, and gifts. They divide their time between Southern California and New York City (depending on the weather and the size of the waves).

ABOUT THIS CARTRIDGE

What is Real Dial Size?



The character shown in red is the Key Height Character, the tallest letter within the font set. All other characters will cut out in proportion to this letter unless Real Dial Size is pressed. If Real Dial Size is pressed, all characters will be sized according to the actual dial size you selected.

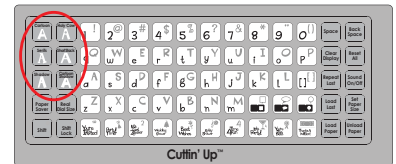


What Are Creative Feature Keys?

The top three pairs of keys on the left panel are reserved for the Creative Feature effects of each set. These Features vary with each specific cartridge, providing greater versatility and thousands of options!

The Creative Feature keys included on the Cuttin' Up™ cartridge are Cartoon, Holy Cow, Serifs, Short Stack, Shadow, and Cartoon Shadow.

To use a Creative Feature key, just select it prior to pressing the CUT button. The characters displayed on the LCD screen will then be cut in the style of the selected Creative Feature. Due to their sizes and shapes, a Feature may not work with all shapes. Please refer to the Icon Gallery for Creative Feature details.



TIP: A Feature can be selected before or after a character has been selected, but before the CUT button is pressed. Once pressed, a Feature key will remain lit until it is turned off in one of the following ways: the Feature key is pressed a second time or the Reset All key is pressed.

Now you're ready to try a project!



"Party" Invitation

Planning a rockin' party invitation can be a challenge. This simple but clever idea makes an invitation that is both jazzy and easy to create.

- Materials:
- Cardstock: bright green, black, white, bright blue, blue, red
 - Map
 - Adhesive



Step One: Create card base. Trim one 5" x 12" (12.7 cm x 30.48 cm) strip of bright green cardstock and fold it into thirds creating three 4" (10.16 cm) wide sections.



Step Two: Cut Cricut shapes and phrases. Using black cardstock, press Shift and cut two 4" (10.16 cm) square blurb <blurbcard>. Using white cardstock, press Shift and cut two 4" (10.16 cm) square blurb <blurbcard>. Cut "You're so Invited" and "Party Time!" phrases. Using bright blue cardstock, cut one 2" (5.08 cm) <soinvited>. Using bright blue cardstock, cut one 2" (5.08 cm) <partytime>. Using blue cardstock, press Shift and cut one 2" (5.08 cm) <soinvited>.

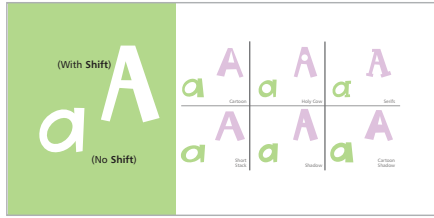


Step Three: Reverse one square black blurb so it points to the right and adhere to front of card. Adhere remaining black blurb to middle flap of card so it points to the left. Remove white squares from white blurb and insert into black blurb. Attach phrases to blurb.



Step Four: Create map showing location of event for inside panel of card. Trim map to 3.5" x 4.5" (8.89 cm x 11.43 cm) and adhere to inside panel. Cut Cricut shapes for inside. Using red cardstock, cut one 1" (2.54 cm) letter x and attach onto map over location. Using black cardstock, press Shift and cut one 4" (10.16 cm) round blurb <blurbcard3>. Using white cardstock, press Shift and cut one 4" (10.16 cm) round blurb <blurbcard3>. Adhere black round blurb onto map so that it is pointing to the red x. Remove center circle from white blurb and print party details onto it. Adhere to center of black round blurb.

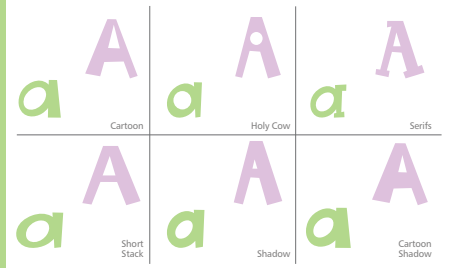
In the Icon Gallery, you will find a diagram for every character on your cartridge. The color change indicates that the image on the upper right is created using the **Shift** key and the image on the lower left is created without **Shift**. Using the Icon Gallery, you can see at a glance which Creative Features are available to use with the character that you have selected. You will find that some characters are very detailed and cut better at a larger dial size.



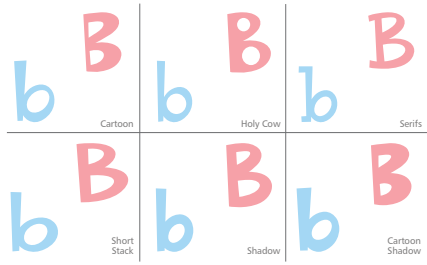
Cuttin' Up™ Creative Features:

- Cartoon
- Holy Cow
- Serifs
- Short Stack
- Shadow
- Cartoon Shadow

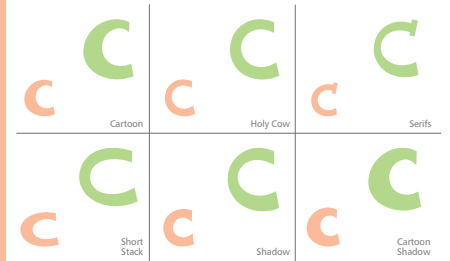
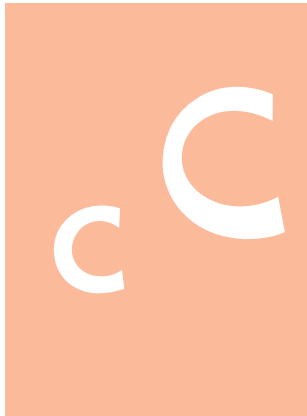
9



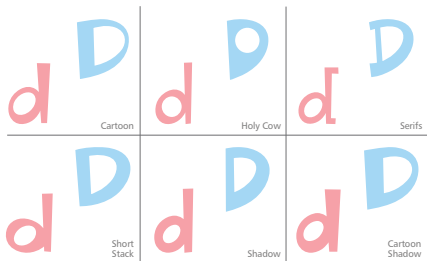
10



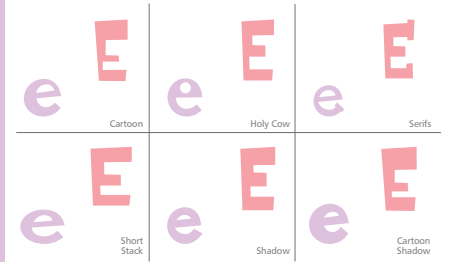
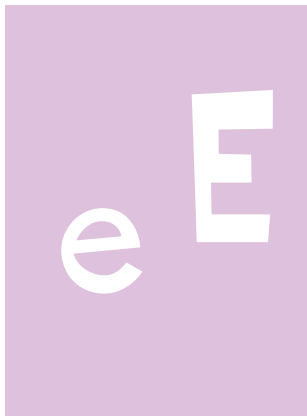
11



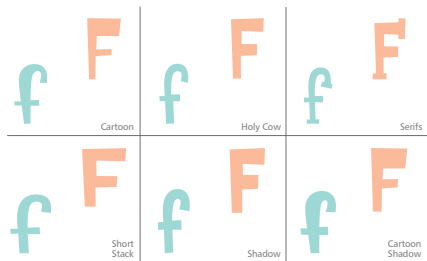
12



13



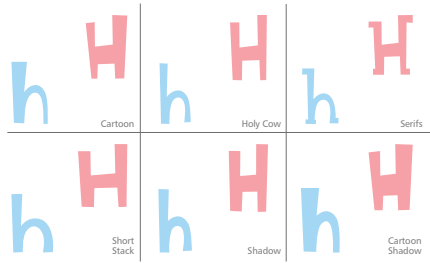
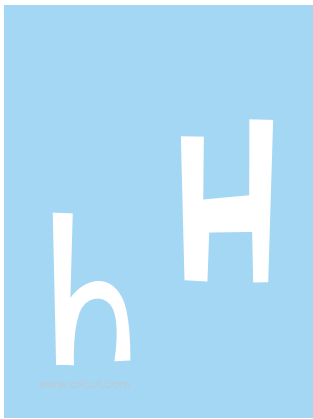
14



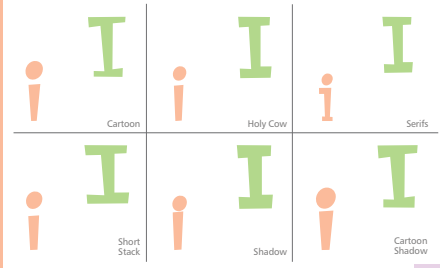
15



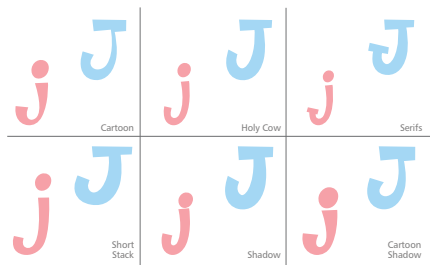
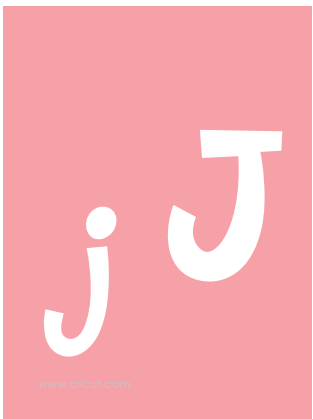
16



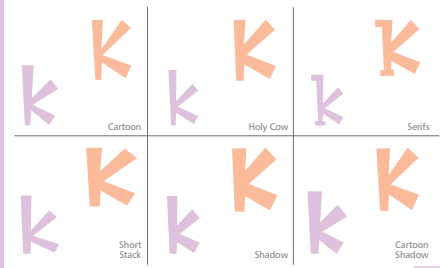
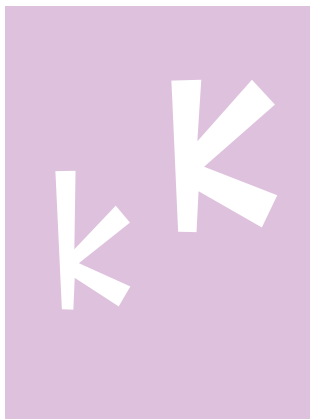
17



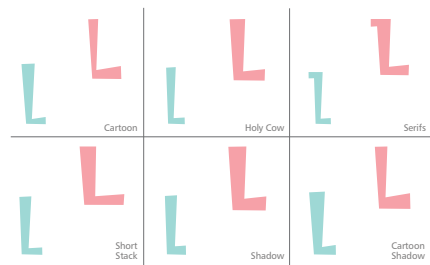
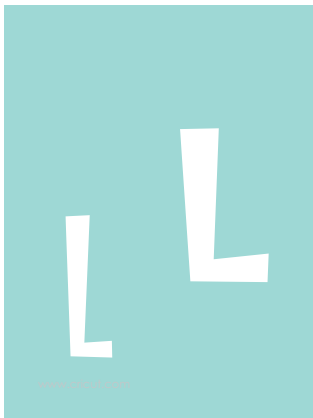
18



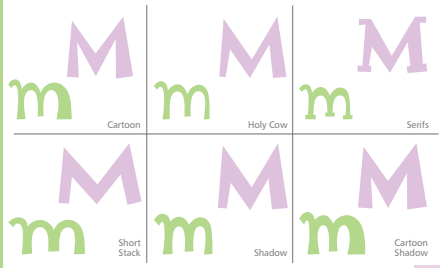
19



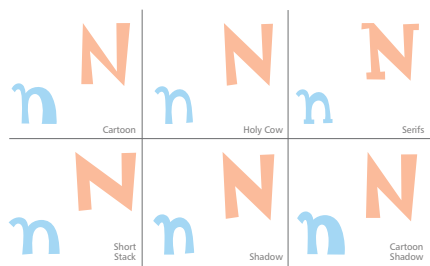
20



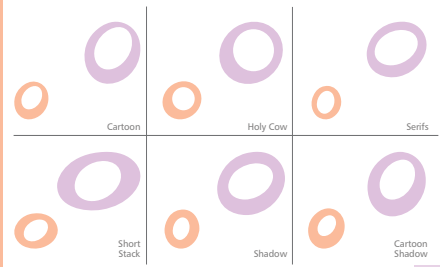
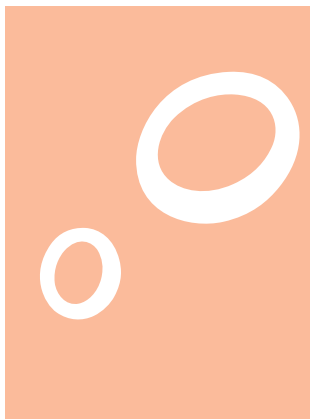
21



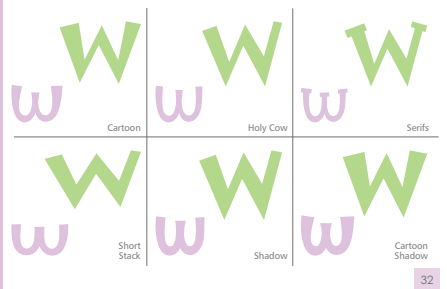
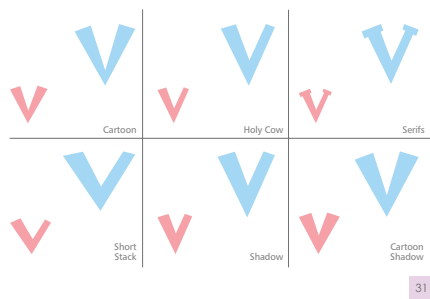
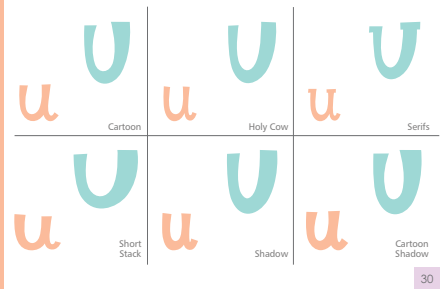
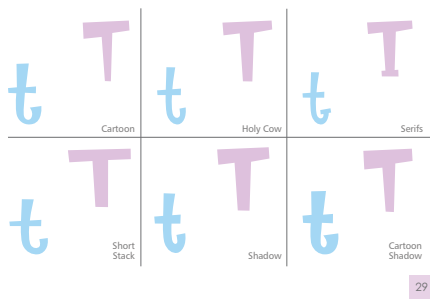
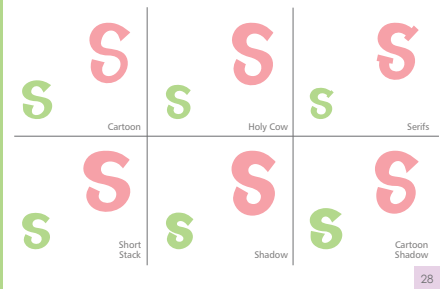
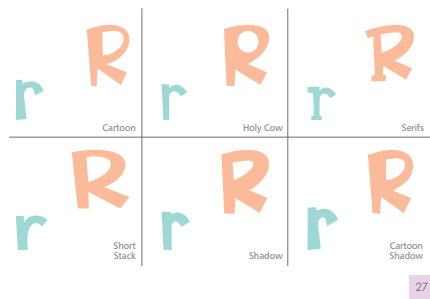
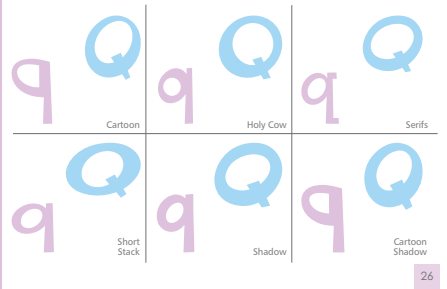
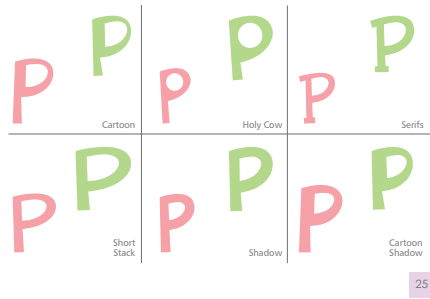
22

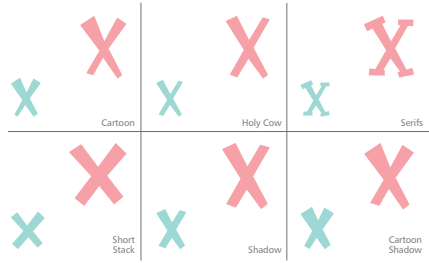


23

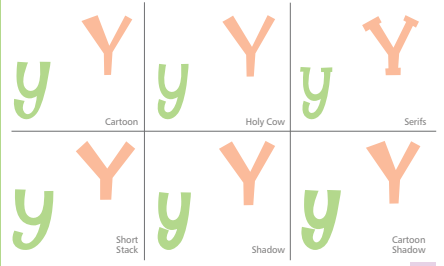


24

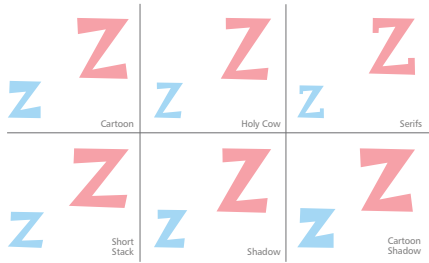




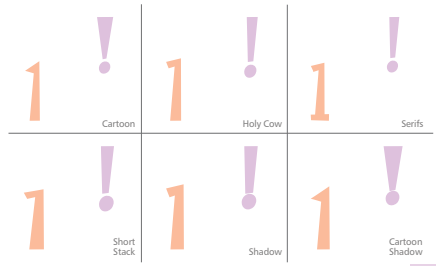
33



34



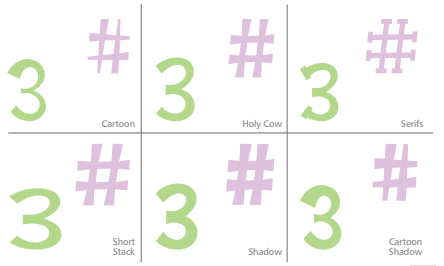
35



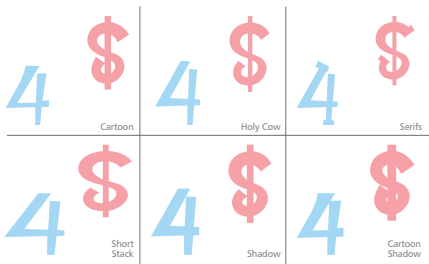
36



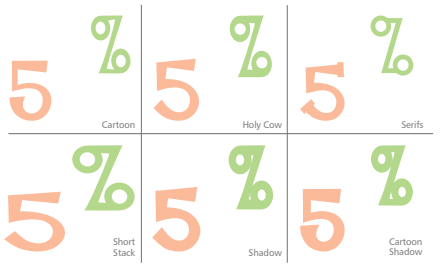
37



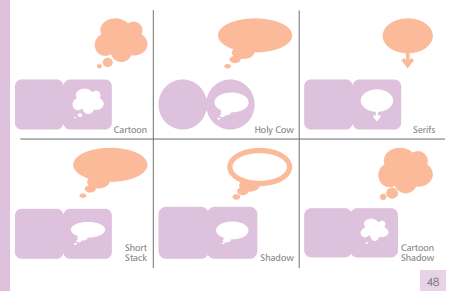
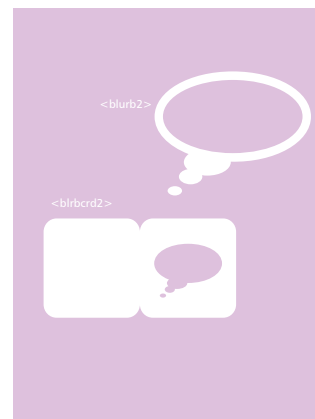
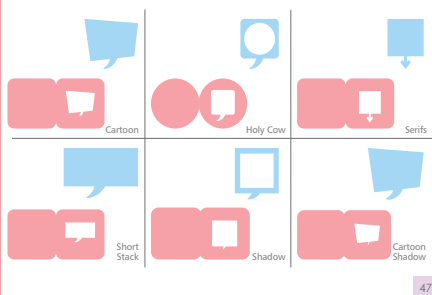
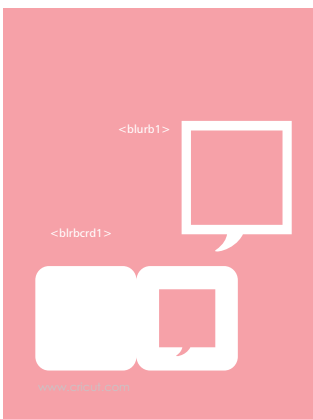
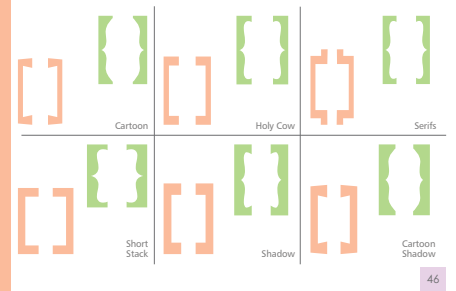
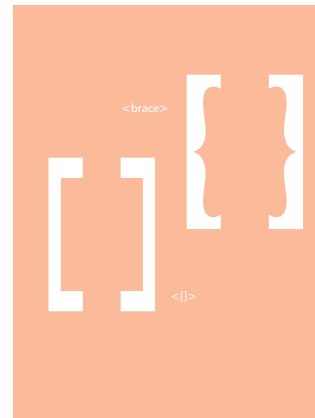
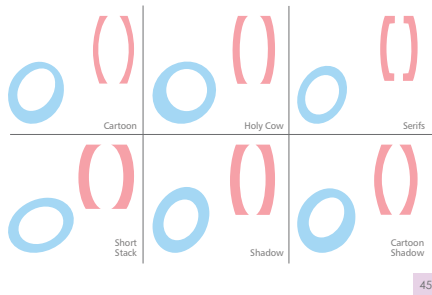
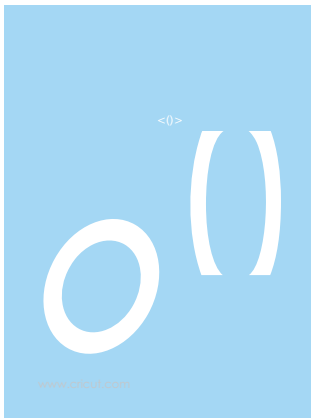
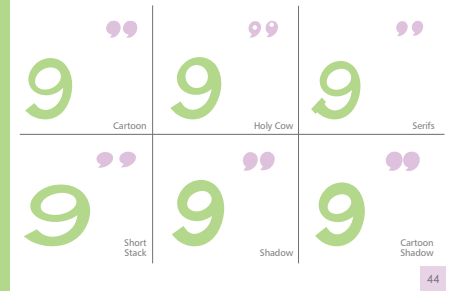
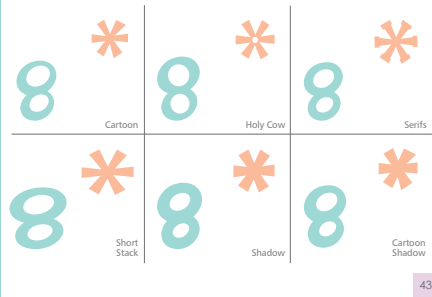
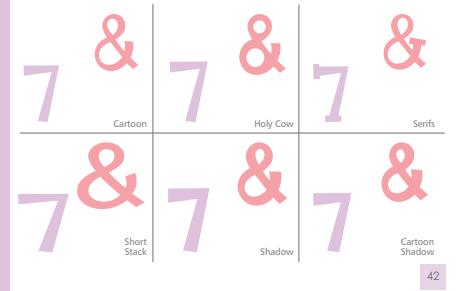
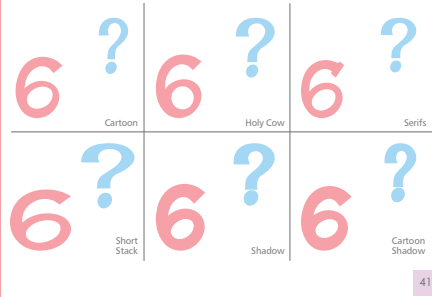
38

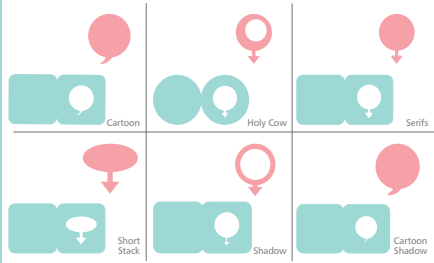
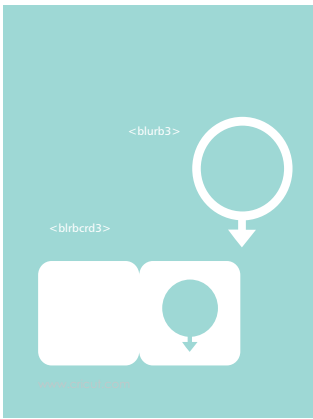


39



40

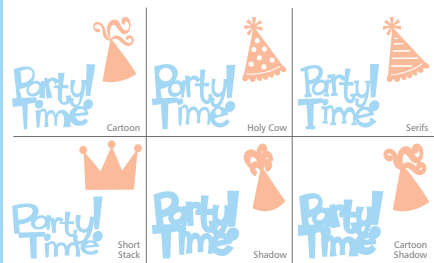




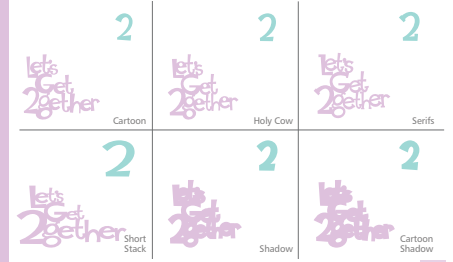
49



50



51



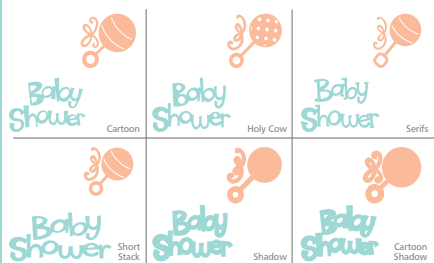
52



53



54



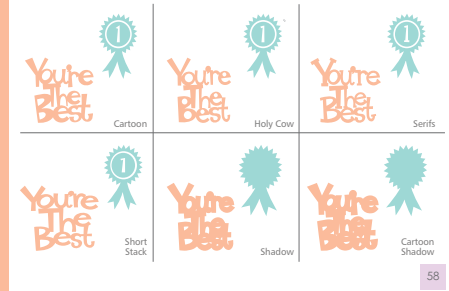
55



56



57



58



59



For in-depth information about using the Cricut™ cutting system refer to the User Manual included with your Cricut™ machine. If you don't find the answers you need, support is available in the following two ways:

You will find the most current help and documentation on the web site. Find answers to FAQs and Troubleshooting problems any time of the day.
INTERNET: www.cricut.com

Refer to the Customer Support information that came with your Cricut™ machine(s) or call for Customer Support options at:
PHONE: 1-877-7CRICUT (727-4288) Monday-Friday 9:00 a.m.-5:00 p.m., mountain time

60

