

# MOXA EtherDevice™ Switch

---

## EDS-516A Series User's Manual

[www.moxa.com/product](http://www.moxa.com/product)

Second Edition, July 2007



Moxa Networking Co., Ltd.

Tel: +886-2-8919-1230

Fax: +886-2-8919-1231

Web: [www.moxa.com](http://www.moxa.com)

**MOXA Technical Support**

Worldwide: [support@moxa.com](mailto:support@moxa.com)

The Americas: [support@usa.moxa.com](mailto:support@usa.moxa.com)

# **MOXA EtherDevice™ Switch EDS-516A Series User's Manual**

The software described in this manual is furnished under a license agreement and may be used only in accordance with the terms of that agreement.

## **Copyright Notice**

Copyright © 2007 Moxa Networking Co., Ltd.  
All rights reserved.  
Reproduction without permission is prohibited.

## **Trademarks**

MOXA is a registered trademark of the Moxa Group.  
All other trademarks or registered marks in this manual belong to their respective manufacturers.

## **Disclaimer**

Information in this document is subject to change without notice and does not represent a commitment on the part of MOXA.

MOXA provides this document “as is,” without warranty of any kind, either expressed or implied, including, but not limited to, its particular purpose. MOXA reserves the right to make improvements and/or changes to this manual, or to the products and/or the programs described in this manual, at any time.

Information provided in this manual is intended to be accurate and reliable. However, MOXA assumes no responsibility for its use, or for any infringements on the rights of third parties that may result from its use.

This product might include unintentional technical or typographical errors. Changes are periodically made to the information herein to correct such errors, and these changes are incorporated into new editions of the publication.

# Table of Contents

<b>Chapter 1</b>	<b>Introduction .....</b>	<b>1-1</b>
	Overview .....	1-2
	Package Checklist.....	1-2
	Features .....	1-2
	Industrial Networking Capability .....	1-2
	Designed for Industrial Applications.....	1-2
	Useful Utility and Remote Configuration .....	1-3
	Recommended Software and Accessories.....	1-3
<b>Chapter 2</b>	<b>Getting Started .....</b>	<b>2-1</b>
	RS-232 Console Configuration (115200, None, 8, 1, VT100) .....	2-2
	Configuration using a Telnet Console .....	2-5
	Configuration using a Web Browser.....	2-6
	Disabling Telnet and Browser Access .....	2-8
<b>Chapter 3</b>	<b>Featured Functions .....</b>	<b>3-1</b>
	Configuring Basic Settings.....	3-4
	System Identification.....	3-4
	Password .....	3-5
	Accessible IP .....	3-6
	Port .....	3-7
	Network.....	3-8
	Time .....	3-10
	System File Update—By Remote TFTP .....	3-12
	System File Update—By Local Import/Export .....	3-13
	System File Update—By Backup Media .....	3-13
	Restart .....	3-14
	Factory Default.....	3-14
	Using Port Trunking .....	3-14
	The Port Trunking Concept.....	3-15
	Configuring Port Trunking.....	3-16
	Configuring SNMP.....	3-17
	SNMP Read/Write Settings.....	3-18
	Trap Settings .....	3-19
	Private MIB information .....	3-19
	Using Communication Redundancy .....	3-20
	The Turbo Ring Concept.....	3-20
	Configuring “Turbo Ring” and “Turbo Ring V2” .....	3-25
	The STP/RSTP Concept.....	3-29
	Configuring STP/RSTP .....	3-34
	Using Traffic Prioritization.....	3-36
	The Traffic Prioritization Concept .....	3-37
	Configuring Traffic Prioritization .....	3-39
	Using Virtual LAN .....	3-41
	The Virtual LAN (VLAN) Concept .....	3-41
	Sample Applications of VLANs using the EDS-516A.....	3-44
	Configuring Virtual LAN.....	3-45
	Using Multicast Filtering.....	3-48
	The Concept of Multicast Filtering .....	3-48

	Configuring IGMP Snooping .....	3-51
	Static Multicast MAC .....	3-52
	Configuring GMRP .....	3-53
	GMRP Table .....	3-53
Using	Bandwidth Management .....	3-54
	Configuring Bandwidth Management .....	3-54
	Broadcast Storm Protection .....	3-54
	Traffic Rate Limiting Settings .....	3-54
Using	Port Access Control .....	3-55
	Configuring Static Port Lock .....	3-57
	Configuring IEEE 802.1X .....	3-57
Using	Auto Warning .....	3-60
	Configuring Email Warning .....	3-60
	Event Type .....	3-60
	Email Setup .....	3-62
	Configuring Relay Warning .....	3-63
	Event Setup .....	3-63
	Warning List .....	3-64
Using	Line-Swap-Fast-Recovery .....	3-64
	Configuring Line-Swap Fast Recovery .....	3-65
Using	Set Device IP .....	3-65
	Configuring Set Device IP .....	3-66
Using	Diagnosis .....	3-66
	Mirror Port .....	3-66
	Ping .....	3-67
Using	Monitor .....	3-68
	Monitor by Switch .....	3-68
	Monitor by Port .....	3-68
Using	the MAC Address Table .....	3-69
Using	System Log .....	3-70
	Event Log .....	3-70
	Syslog Settings .....	3-70
Using	HTTPS/SSL .....	3-71
<b>Chapter 4</b>	<b>EDS Configurator GUI .....</b>	<b>4-1</b>
	Starting EDS Configurator .....	4-2
	Broadcast Search .....	4-2
	Search by IP address .....	4-3
	Upgrade Firmware .....	4-3
	Modify IP Address .....	4-4
	Export Configuration .....	4-5
	Import Configuration .....	4-6
	Unlock Server .....	4-7
<b>Appendix A</b>	<b>MIB Groups .....</b>	<b>A-1</b>
<b>Appendix B</b>	<b>Specifications .....</b>	<b>B-1</b>
<b>Appendix C</b>	<b>Service Information .....</b>	<b>C-1</b>
	MOXA Internet Services .....	C-2
	Problem Report Form .....	C-3
	Product Return Procedure .....	C-4

Welcome to the MOXA EtherDevice Switch EDS-516A Series, the Managed Ethernet Switch designed specially for connecting Ethernet-enabled devices in industrial field applications.

The following topics are covered in this chapter:

- ❑ **Overview**
- ❑ **Package Checklist**
- ❑ **Features**
  - Industrial Networking Capability
  - Designed for Industrial Applications
  - Useful Utility and Remote Configuration
  - Recommended Software and Accessories

## Overview

As the world's network and information technology becomes more mature, the trend is to use Ethernet as the major communications interface in many industrial communications and automation applications. In fact, a whole new industry has sprung up to provide Ethernet products that comply with the requirements of demanding industrial applications. EDS-516A is designed for high port density, ultra-reliable operation in rugged industrial environments, and is therefore the best choice for each industrial application.

## Package Checklist

The MOXA EtherDevice Switch EDS-516A Series is shipped with the following items. If any of these items are missing or damaged, please contact your customer service representative for assistance.

- 1 MOXA EtherDevice Switch EDS-516A
- Hardware Installation Guide
- CD-ROM with User's Manual and Windows Utility
- MOXA Product Warranty booklet
- RJ45 to DB9 Console port cable
- Protective caps for unused ports
- Panel mounting kit (optional—must order separately)

## Features

### Industrial Networking Capability

- Redundant Ethernet Ring Capability (recovery time < 300 ms at full load)
- IGMP Snooping and GMRP for filtering multicast traffic from industrial Ethernet Protocols
- Supports IEEE 802.1Q, Tag-based VLAN, GVRP, and Port-based VLAN to ease network planning
- Supports QoS—IEEE 802.1p/1Q and TOS/DiffServ to increase determinism
- Supports 802.3ad, LACP for optimum bandwidth utilization
- Supports IEEE 802.1X and SSL to enhance network security
- SNMP V1/V2c/V3 for different levels of network management security
- RMON for efficient network monitoring and proactive capability

### Designed for Industrial Applications

- Bandwidth management prevents unpredictable network status
- Support ABC-01 (Automatic Backup Configurator) for system configuration back up
- Long-haul transmission distance of 40 km or 80 km
- Redundant, dual 12-45 VDC power inputs
- IP 30, rugged high-strength metal case
- DIN-Rail or panel mounting ability
- Bandwidth management to prevent unpredictable network status
- Lock port for authorized MAC address access only
- Port mirroring for online debugging
- Automatic warning by exception through email, relay output
- Digital inputs to integrate a sensor and alarm with an IP network
- Automatic recovery of connected device IP addresses
- Line-swap fast recovery

## Useful Utility and Remote Configuration

- Configurable using a Web browser, Telnet/Serial console, and Windows utility
- Send ping commands to identify network segment integrity

## Recommended Software and Accessories

- EDS-SNMP OPC Server Pro
- DR-4524, DR-75-24, DR-120-24 DIN-Rail 24 VDC Power Supply Series
- ABC-01

# 2

## Getting Started

---

This chapter explains how to access EDS-516A for the first time. There are three ways to access the switch: serial console, Telnet console, and web browser. The serial console connection method, which requires using a short serial cable to connect the EDS-516A to a PC's COM port, can be used if you do not know the EDS-516A's IP address. The Telnet console and web browser connection methods can be used to access the EDS-516A over an Ethernet LAN, or over the Internet.

The following topics are covered:

- ❑ **RS-232 Console Configuration (115200, None, 8, 1, VT100)**
- ❑ **Configuration using a Telnet Console**
- ❑ **Configuration using a Web Browser**
- ❑ **Disabling Telnet and Browser Access**

## RS-232 Console Configuration (115200, None, 8, 1, VT100)

**NOTE****Connection Caution!**

1. You **cannot** connect to the EDS-516A simultaneously by serial console and Telnet.
2. You **can** connect to the EDS-516A simultaneously by web browser and serial console, or by web browser and Telnet. However, we strongly suggest that you do NOT use more than one connection method at the same time. Following this advice will allow you to maintain better control over the configuration of your EDS-516A.

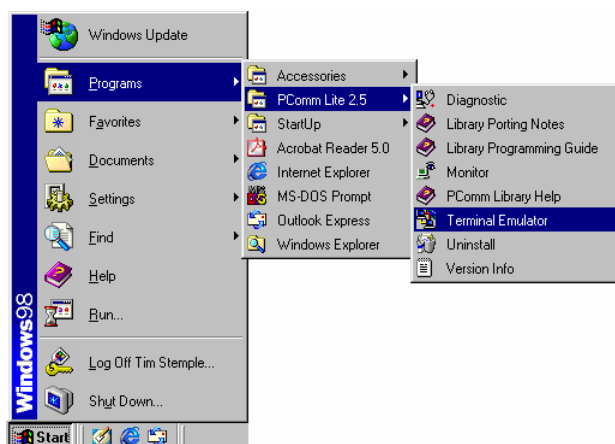
**NOTE**

We recommend using MOXA PComm Terminal Emulator, which can be downloaded free of charge from MOXA's website.

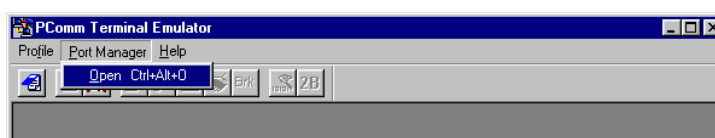
Before running PComm Terminal Emulator, use an RJ45 to DB9-F (or RJ45 to DB25-F) cable to connect the EDS-516A's RS-232 Console port to your PC's COM port (generally COM1 or COM2, depending on how your system is set up).

After installing PComm Terminal Emulator, perform the following steps to access the RS-232 Console utility.

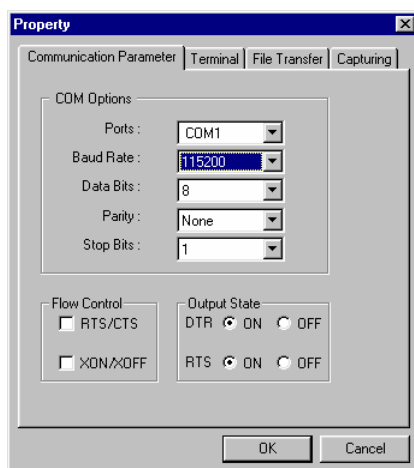
1. From the Windows desktop, click **Start → Programs → PCommLite2.5 → Terminal Emulator**.



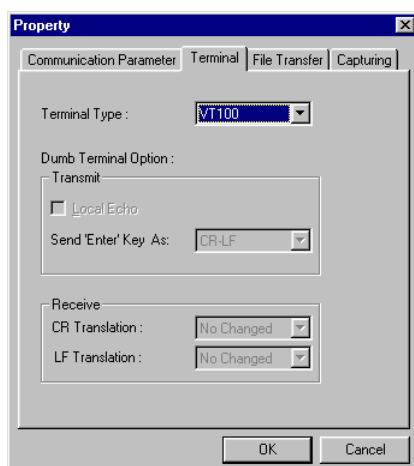
2. Select **Open** under **Port Manager** to open a new connection.



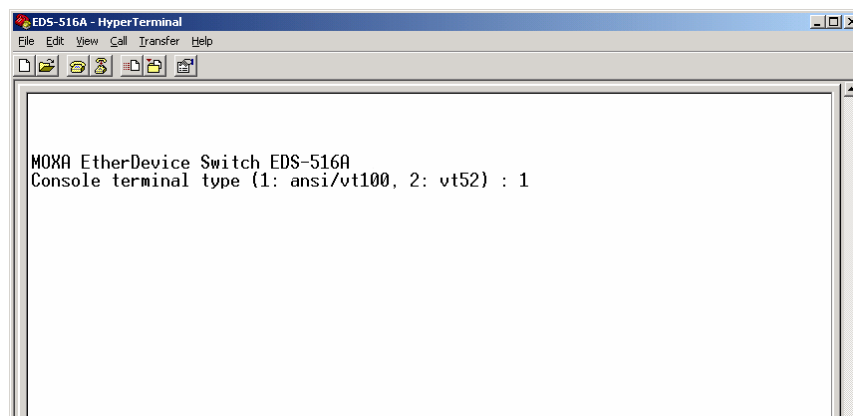
- The **Communication Parameter** page of the **Property** window opens. Select the appropriate COM port for **Console Connection**, **115200** for **Baud Rate**, **8** for **Data Bits**, **None** for **Parity**, and **1** for **Stop Bits**.



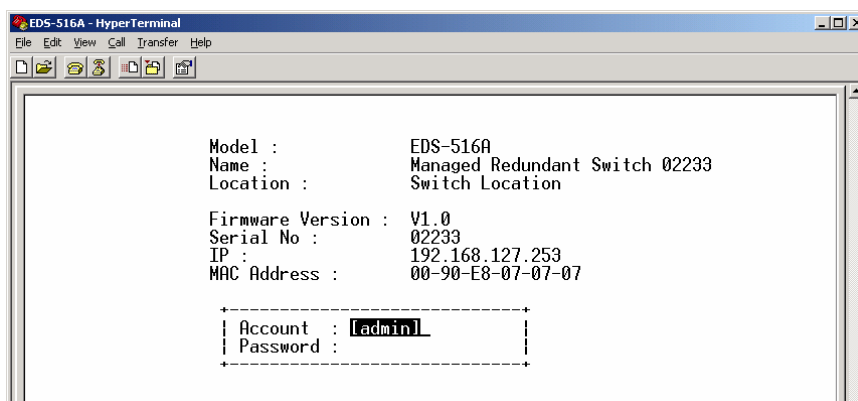
- Click the **Terminal** tab, and select **VT100** for **Terminal Type**. Click **OK** to continue.



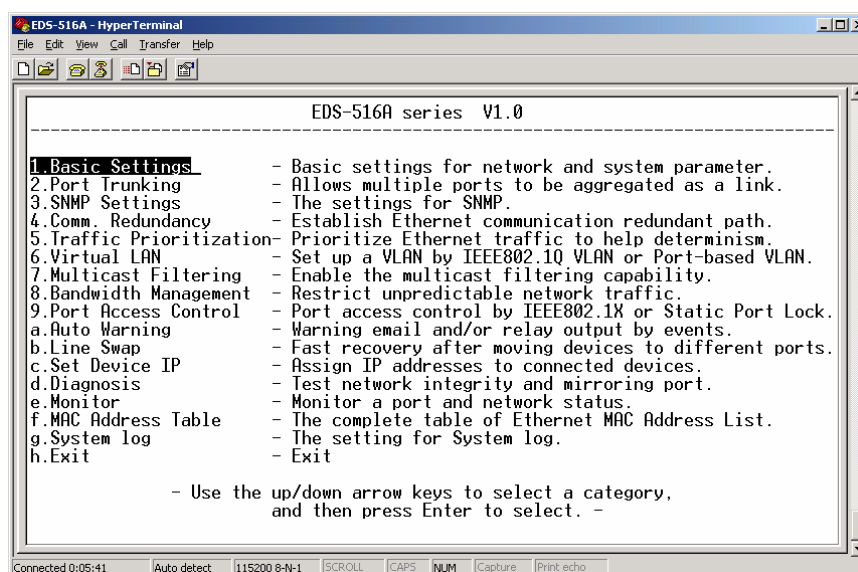
- Type **1** to select **ansi/VT100** terminal type, and then press **Enter**.



6. The Console login screen will appear. Press **Enter** to open the Account pop-up selector and then select either **admin** or **user**. Use the keyboard's down arrow to move the cursor to the Password field, enter the **Console Password** (this is the same as the Web Browser password; leave the **Password** field blank if a console password has not been set), and then press **Enter**.



7. The EDS-516A's **Main Menu** will be displayed. (NOTE: To modify the appearance of the PComm Terminal Emulator window, select **Font...** under the **Edit** menu, and then choose the desired formatting options.)



8. After entering the **Main Menu**, use the following keys to move the cursor, and to select options.

Key	Function
Up/Down/Left/Right arrows, or Tab	Move the onscreen cursor
Enter	Display & select options
Space	Toggle options
Esc	Previous Menu

## Configuration using a Telnet Console

You may use Telnet to access the EDS-516A's console utility over a network. To be able to access EDS-516A's functions over the network (by Telnet or Web Browser) from a PC host that is connected to the same LAN as the EDS-516A, you need to make sure that the PC host and the EDS-516A are on the same logical subnet. To do this, check your PC host's IP address and subnet mask. By default, the EDS-516A's IP address is 192.168.127.253 and the EDS-516A's subnet mask is 255.255.0.0 (for a Class B network). If you do not change these values, and your PC host's subnet mask is 255.255.0.0, then its IP address must have the form 192.168.xxx.xxx. On the other hand, if your PC host's subnet mask is 255.255.255.0, then its IP address must have the form 192.168.127.xxx.

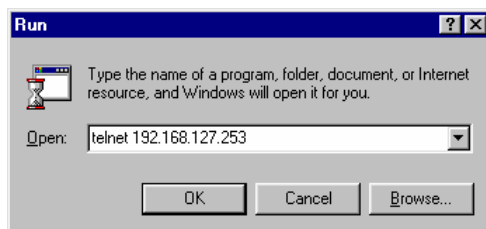
**NOTE** To use the EDS-516A's management and monitoring functions from a PC host connected to the same LAN as the EDS-516A, you must make sure that the PC host and the EDS-516A are on the same logical subnet.

**NOTE** Before accessing the console utility by Telnet, first connect one of the EDS-516A's RJ45 Ethernet ports to your Ethernet LAN, or directly to your PC's Ethernet NIC. You can establish a connection with either a straight-through or cross-over Ethernet cable.

**NOTE** The EDS-516A's default IP is **192.168.127.253**.

Perform the following steps to access the console utility by Telnet.

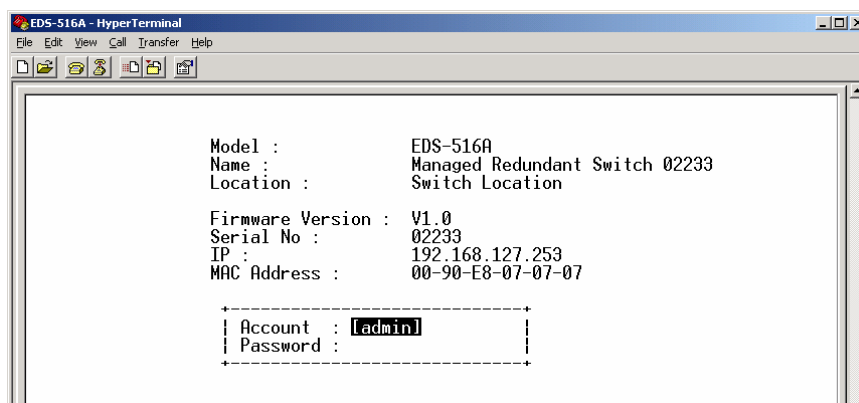
1. Click **Start → Run**, and then telnet to the EDS-516A's IP address from the Windows **Run** window. (You may also issue the telnet command from the MS-DOS prompt.)



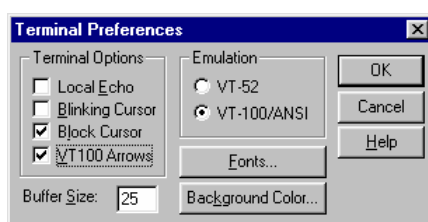
2. Type **1** to choose **ansi/vt100**, and then press **Enter**.

```
MOXA EtherDevice Switch EDS-516A
Console terminal type (1: ansi/vt100, 2: vt52) : 1
```

- The Console login screen will appear. Press **Enter** to open the Account pop-up selector and then select either **admin** or **user**. Use the keyboard's down arrow to move the cursor to the Password field, enter the **Console Password** (this is the same as the Web Browser password; leave the **Password** field blank if a console password has not been set), and then press **Enter**.



- When the **Main Menu** of the EDS-516A's console utility opens, click **Terminal** → **preferences...** from the menu at the top of the window.
- When the **Terminal Preferences** window opens, make sure that the **VT100 Arrows** option is selected.



**NOTE** The Telnet Console looks and operates in precisely the same manner as the RS-232 Console.

## Configuration using a Web Browser

The EDS-516A's web browser interface provides a convenient way to modify the switch's configuration and access the built-in monitoring and network administration functions. The recommended web browser is Microsoft Internet Explorer 5.5 or 6.0 with JVM (Java Virtual Machine) installed.

**NOTE** To use the EDS-516A's management and monitoring functions from a PC host connected to the same LAN as the EDS-516A, you must make sure that the PC host and the EDS-516A are on the same logical subnet.

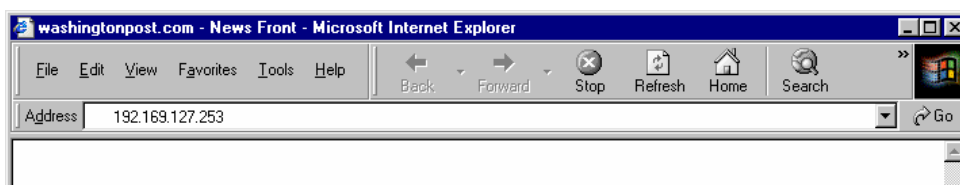
**NOTE** If the EDS-516A is configured for other VLAN settings, you must make sure your PC host is on the management VLAN.

**NOTE** Before accessing the EDS-516A's web browser interface, first connect one of its RJ45 Ethernet ports to your Ethernet LAN, or directly to your PC's Ethernet NIC. You can establish a connection with either a straight-through or cross-over Ethernet cable.

**NOTE** The MOXA EDS-516A's default IP is **192.168.127.253**.

Perform the following steps to access the EDS-516A's web browser interface.

1. Open Internet Explorer and type the EDS-516A's IP address in the **Address** field. Press **Enter** to establish the connection.

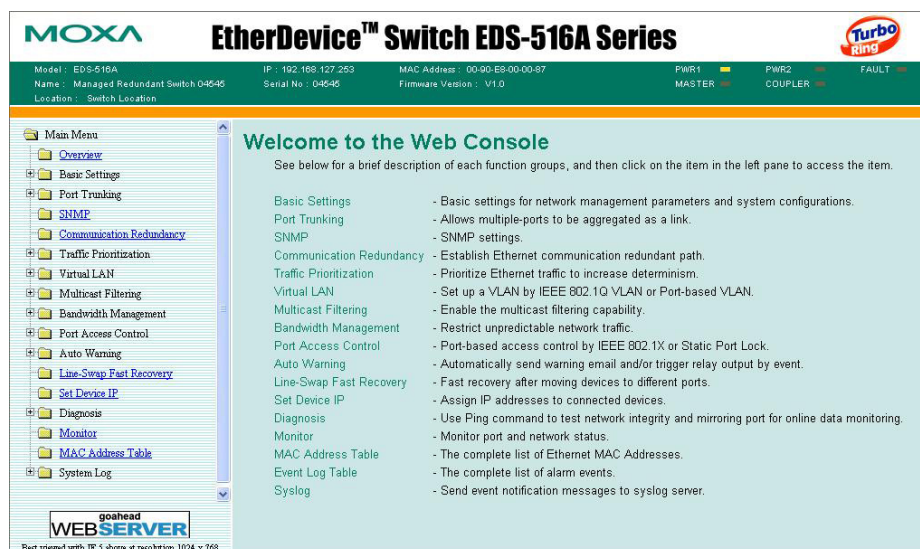


2. The web login page will open. Select the login account (Admin or User) and enter the **Password** (this is the same as the Console password), and then click **Login** to continue. Leave the **Password** field blank if a password has not been set.



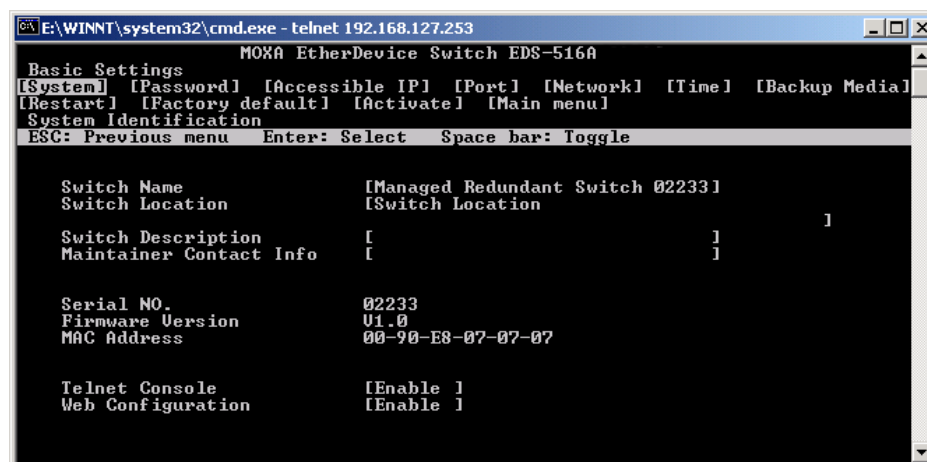
**NOTE** By default, the EDS-516A's password is not set (i.e., is blank).

You may need to wait a few moments for the web page to be downloaded to your computer. Use the menu tree on the left side of the window to open the function pages to access each of MOXA EtherDevice Switch's functions.



## Disabling Telnet and Browser Access

If you are connecting the EDS-516A to a public network, but do not intend to use its management functions over the network, we suggest disabling both **Telnet Console** and **Web Configuration** from the RS-232 Console's **Basic Settings** → **System Identification** page, as shown in the following figure.



## Featured Functions

---

This chapter explains how to access the EDS-516A's various configuration, monitoring, and administration functions. There are three ways to access these functions: RS-232 console, Telnet console, and web browser. The serial console connection method, which requires using a short serial cable to connect the EDS-516A to a PC's COM port, can be used if you do not know the EDS-516A's IP address. The Telnet console and web browser connection methods can be used to access the EDS-516A over an Ethernet LAN, or over the Internet.

The Web Console is the most user-friendly way to configure the EDS-516A. In this chapter, we use the Web Console interface to introduce the functions. There are only a few differences between the Web Console, Serial Console, and Telnet Console.

The following topics are covered in this chapter:

- ❑ **Configuring Basic Settings**
- ❑ **Using Port Trunking**
- ❑ **Configuring SNMP**
- ❑ **Using Communication Redundancy**
- ❑ **Using Traffic Prioritization**
- ❑ **Using Virtual LAN**
- ❑ **Using Multicast Filtering**
- ❑ **Using Bandwidth Management**
- ❑ **Using Port Access Control**
- ❑ **Using Auto Warning**
- ❑ **Using Line-Swap-Fast-Recovery**
- ❑ **Using Set Device IP**
- ❑ **Using Diagnosis**
- ❑ **Using Monitor**
- ❑ **Using the MAC Address Table**
- ❑ **Using System Log**
- ❑ **Syslog Settings**

This function provides the event logs for the syslog server. The function supports 3 configurable syslog servers and syslog server UDP port numbers. When an event occurs, the event will be sent as a syslog UDP packet to the specified syslog servers.

### Syslog Settings

Syslog Server 1	<input type="text" value="syslogsvr.moxa.com"/>
Port Destination	<input type="text" value="514"/> (1~65535)
Syslog Server 2	<input type="text"/>
Port Destination	<input type="text" value="514"/> (1~65535)
Syslog Server 3	<input type="text"/>
Port Destination	<input type="text" value="514"/> (1~65535)

**Syslog Server 1**

Setting	Description	Factory Default
IP Address	Enter the IP address of 1st Syslog Server used by your network.	None
Port Destination (1 to 65535)	Enter the UDP port of 1st Syslog Server.	514

**Syslog Server 2**

Setting	Description	Factory Default
IP Address	Enter the IP address of 2nd Syslog Server used by your network.	None
Port Destination (1 to 65535)	Enter the UDP port of 2nd Syslog Server.	514

**Syslog Server 3**

Setting	Description	Factory Default
IP Address	Enter the IP address of 3rd Syslog Server used by your network.	None
Port Destination (1 to 65535)	Enter the UDP port of 3rd Syslog Server.	514

**NOTE** The following events will be recorded into the EDS-516A's Event Log table, and will then be sent to the specified Syslog Server:

1. Cold start
2. Warm start
3. Configuration change activated
4. Power 1/2 transition (Off → On), Power 1/2 transition (On → Off)
5. Authentication fail
6. Topology changed
7. Master setting is mismatched
8. DI 1/2 transition (Off → On), DI 1/2 transition (On → Off)
9. Port traffic overload

- 10. dot1x Auth Fail
- 11. Port link off / on

☐ Using HTTPS/SSL

## Configuring Basic Settings

The Basic Settings group includes the most commonly used settings required by administrators to maintain and control the EDS-516A.

### System Identification

The system identification items are displayed at the top of the web page, and will be included in alarm emails. Entering the system identification information makes it easier to identify the different switches connected to your network.

#### Switch Name

Setting	Description	Factory Default
Max. 30 Characters	This option is useful for specifying the role or application of different EDS-516A units. E.g., Factory Switch 1.	Managed Redundant Switch [Serial No. of this switch]

#### Switch Location

Setting	Description	Factory Default
Max. 80 Characters	To specify the location of different EDS-516A units. E.g., production line 1.	Switch Location

#### Switch Description

Setting	Description	Factory Default
Max. 30 Characters	Use this to enter a more detailed description of the EDS-516A.	None

#### Maintainer Contact Info

Setting	Description	Factory Default
Max. 30 Characters	To provide information about whom to contact in order to resolve problems. Use this to enter contact information of the person responsible for maintaining this EDS-516A.	None

## Password

The EDS-516A provides two levels of access privileges: **admin** privilege gives read/write access to all EDS-516A configuration parameters, and **user** privilege provides read access only. You will be able to view the configuration, but will not be able to make modifications.



### ATTENTION

The EDS-516A's default Password is not set (i.e., is blank). If a Password is already set, then you will be required to type the Password when logging into the RS-232 Console, Telnet Console, or Web Browser interface.

#### Account

Setting	Description	Factory Default
admin	"admin" privilege allows the user to <i>modify</i> all EDS-516A configuration settings.	admin
user	"user" privilege only allows <i>viewing</i> the EDS-516A configurations.	

#### Password

Setting	Description	Factory Default
Old Password (Max. 16 Characters)	Type current password when changing the password	None
New Password (Max. 16 Characters)	Type new password when changing the password	None
Retype Password (Max. 16 Characters)	If you type a new password in the Password field, you will be required to retype the password in the Retype new password field before updating the new password.	None

## Accessible IP

The EDS-516A uses an IP address-based filtering method to control access to EDS-516A units.

**Accessible IP List**

☐ Enable the accessible IP list ("Disable" will allow all IP's connection)

Index	IP	NetMask
1		
2		
3		
4		
5		
6		
7		
8		
9		
10		

Activate

Accessible IP Settings allows you to add or remove "Legal" remote host IP addresses to prevent unauthorized access. Access to the EDS-516A is controlled by IP address. If a host's IP address is in the accessible IP table, then the host will be allowed access to the EDS-516A. You can allow one of the following cases by setting this parameter:

- **Only one host with the specified IP address can access the EDS-516A**  
E.g., enter "192.168.1.1/255.255.255.255" to allow access to *just* the IP address 192.168.1.1.
- **Any host on a specific subnetwork can access the EDS-516A**  
E.g., enter "192.168.1.0/255.255.255.0" to allow access to all IPs on the subnet defined by this IP address/subnet mask combination.
- **Any host can access the EDS-516A**

Disable this function by deselecting the *Enable the accessible IP list* option.

The following table shows additional configuration examples:

Allowable Hosts	Input format
Any host	Disable
192.168.1.120	192.168.1.120 / 255.255.255.255
192.168.1.1 to 192.168.1.254	192.168.1.0 / 255.255.255.0
192.168.0.1 to 192.168.255.254	192.168.0.0 / 255.255.0.0
192.168.1.1 to 192.168.1.126	192.168.1.0 / 255.255.255.128
192.168.1.129 to 192.168.1.254	192.168.1.128 / 255.255.255.128

## Port

**Port** settings are included to give the user control over Port Access, Port Transmission Speed, Flow Control, and Port Type (MDI or MDIX). An explanation of each configuration item follows:

**Port Settings**

Port	Enable	Description	Name	Speed	FDX Flow Ctrl	MDI/MDIX
1	<input checked="" type="checkbox"/>	100TX,RJ45.		Auto	Disable	Auto
2	<input checked="" type="checkbox"/>	100TX,RJ45.		Auto	Disable	Auto
3	<input checked="" type="checkbox"/>	100TX,RJ45.		Auto	Disable	Auto
4	<input checked="" type="checkbox"/>	100TX,RJ45.		Auto	Disable	Auto
5	<input checked="" type="checkbox"/>	100TX,RJ45.		Auto	Disable	Auto
6	<input checked="" type="checkbox"/>	100TX,RJ45.		Auto	Disable	Auto
7	<input checked="" type="checkbox"/>	100TX,RJ45.		Auto	Disable	Auto
8	<input checked="" type="checkbox"/>	100TX,RJ45.		Auto	Disable	Auto

**Activate**

### Enable

Setting	Description	Factory Default
checked	Allows data transmission through the port.	enabled
unchecked	Immediately shuts off port access.	



### ATTENTION

If a connected device or sub-network is wreaking havoc on the rest of the network, the **Disable** option under **Advanced Settings/Port** gives the administrator a quick way to shut off access through this port immediately.

### Description

Setting	Description	Factory Default
Media type	Displays the media type for each module's port	N/A

### Name

Setting	Description	Factory Default
Max. 63 Characters	Specify an alias for each port, and assist the administrator in remembering important information about the port. E.g., PLC 1	None

*Speed*

Setting	Description	Factory Default
Auto	Allows the port to use the IEEE 802.3u protocol to negotiate with connected devices. The port and connected devices will determine the best speed for that connection.	Auto
100M-Full	Choose one of these fixed speed options if the opposing Ethernet device has trouble auto-negotiating line speed.	
100M-Half		
10M-Full		
10M-Half		

*FDX Flow Ctrl*

This setting enables or disables the flow control capability of this port when the “port transmission speed” setting is in “auto” mode. The final result will be determined by the “auto” process between the EDS-516A and connected devices.

Setting	Description	Factory Default
Enable	Enables flow control for this port when in auto-negotiate mode.	Disable
Disable	Disables flow control for this port when in auto-negotiate mode.	

*MDI/MDIX*

Setting	Description	Factory Default
Auto	Allows the port to auto detect the port type of the opposing Ethernet device and change the port type accordingly.	Auto
MDI	Choose the MDI or MDIX option if the opposing Ethernet device has trouble auto-negotiating port type.	
MDIX		

## Network

The **Network** configuration allows users to modify the usual TCP/IP network parameters. An explanation of each configuration item follows.

### Network Parameters

#### General Settings

Auto IP Configuration

Disable

Switch IP Address

192.168.127.253

Switch Subnet Mask

255.255.255.0

Default Gateway

1st DNS Server IP Address

2nd DNS Server IP Address

Activate

*Auto IP Configuration*

Setting	Description	Factory Default
Disable	Set up the EDS-516A's IP address manually.	Disable
By DHCP	The EDS-516A's IP address will be assigned automatically by the network's DHCP server.	
By BOOTP	The EDS-516A's IP address will be assigned automatically by the network's BOOTP server.	

*Switch IP Address*

Setting	Description	Factory Default
IP Address of the EDS-516A	Identifies the EDS-516A on a TCP/IP network.	192.168.127.253

*Switch Subnet Mask*

Setting	Description	Factory Default
Subnet mask of the EDS-516A	Identifies the type of network to which the EDS-516A is connected (e.g., 255.255.0.0 for a Class B network, or 255.255.255.0 for a Class C network).	255.255.255.0

*Default Gateway*

Setting	Description	Factory Default
Default Gateway of the EDS-516A	The IP address of the router that connects the LAN to an outside network.	None

*DNS IP Address*

Setting	Description	Factory Default
1st DNS Server's IP Address	The IP address of the DNS Server used by your network. After entering the DNS Server's IP address, you can input the EDS-516A's URL (e.g., <a href="http://www.eds.company.com">www.eds.company.com</a> ) in your browser's address field, instead of entering the IP address.	None
2nd DNS Server's IP Address	The IP address of the DNS Server used by your network. The EDS-516A will try to locate the 2nd DNS Server if the 1st DNS Server fails to connect.	None

## Time

The **Time** configuration page lets users set the time, date, and other settings. An explanation of each setting is given below the figure.

The EDS-516A has a time calibration function based on information from an NTP server or user specified Time and Date information. Functions such as Auto warning “Email” can add real-time information to the message.

**NOTE** The EDS-516A does not have a real time clock. The user must update the **Current Time** and **Current Date** to set the initial time for the EDS-516A after each reboot, especially when the network does not have an Internet connection for an NTP server or there is no NTP server on the LAN.

### Current Time

Setting	Description	Factory Default
User adjustable time.	The time parameter allows configuration of the local time in local 24-hour format.	None (hh:mm:ss)

### Current Date

Setting	Description	Factory Default
User adjustable date.	The date parameter allows configuration of the local date in yyyy/mm/dd format.	None (yyyy/mm/dd)

## Daylight Saving Time

Daylight saving time (also know as **DST** or **summer time**) involves advancing clocks (usually 1 hour) during the summer time to provide an extra hour of daylight in the afternoon.

### Start Date

Setting	Description	Factory Default
User adjustable date.	The Start Date parameter allows users to enter the date that daylight saving time begins.	None

***End Date***

Setting	Description	Factory Default
User adjustable date.	The End Date parameter allows users to enter the date that daylight saving time ends.	None

***Offset***

Setting	Description	Factory Default
User adjustable hour.	The offset parameter indicates how many hours forward the clock should be advanced.	None

***System Up Time***

Indicates the EDS-516A's up time from the last cold start. The unit is seconds.

***Time Zone***

Setting	Description	Factory Default
User selectable time zone	The time zone setting allows conversion from GMT (Greenwich Mean Time) to local time.	GMT (Greenwich Mean Time)

**NOTE** Changing the time zone will automatically correct the current time. You should **configure the time zone before setting the time**.

***Time Server IP/Name***

Setting	Description	Factory Default
1st Time Server IP/Name	IP or Domain address (e.g., 192.168.1.1 or time.stdtime.gov.tw or time.nist.gov).	None
2nd Time Server IP/Name	The EDS-516A will try to locate the 2nd NTP Server if the 1st NTP Server fails to connect.	

***Time Server Query Period***

Setting	Description	Factory Default
Query Period	This parameter determines how frequently the time is updated from the NTP server.	600 seconds

## System File Update—By Remote TFTP

The EDS-516A supports saving your configuration file to a remote TFTP server or local host to allow other EDS-516A switches to use the same configuration at a later time, or saving the Log file for future reference. Loading pre-saved firmware or a configuration file from the TFTP server or local host is also supported for easy upgrading or configuration of the EDS-516A.

**Update System Files by TFTP**

TFTP Server IP/Name

Configuration Files Path and Name

Firmware Files Path and Name

Log Files Path and Name

### *TFTP Server IP/Name*

Setting	Description	Factory Default
IP Address of TFTP Server	The IP or name of the remote TFTP server. Must be set up before downloading or uploading files.	None

### *Configuration Files Path and Name*

Setting	Description	Factory Default
Max. 40 Characters	The path and file name of the EDS-516A's configuration file in the TFTP server.	None

### *Firmware Files Path and Name*

Setting	Description	Factory Default
Max. 40 Characters	The path and file name of the EDS-516A's firmware file.	None

### *Log Files Path and Name*

Setting	Description	Factory Default
Max. 40 Characters	The path and file name of the EDS-516A's log file	None

After setting up the desired path and file name, click **Activate** to save the setting, and then click **Download** to download the prepared file from the remote TFTP server, or click **Upload** to upload the desired file to the remote TFTP server.

## System File Update—By Local Import/Export

**Update System Files from Local PC**

Configuration File	<input type="button" value="Export"/>		
Log File	<input type="button" value="Export"/>		
Upgrade Firmware	<input type="text"/>	<input type="button" value="Browse"/>	<input type="button" value="Import"/>
Upload Configure Data	<input type="text"/>	<input type="button" value="Browse"/>	<input type="button" value="Import"/>

### *Configuration File*

To export the configuration file of this EDS-516A, click **Export** to save it to the local host.

### *Log File*

To export the Log file of this EDS-516A, click **Export** and save it to the local host.

#### NOTE

Some operating systems will open the configuration file and log file directly in the web page. In such cases, right click **Export** to save as a file.

### *Upgrade Firmware*

To import the firmware file of this EDS-516A, click **Browse** to select the firmware file already saved on your computer. The upgrade procedure will proceed automatically after clicking **Import**.

### *Upload Configuration Data*

To import the configuration file of this EDS-516A, click **Browse** to select the configuration file already saved on your computer. The upgrade procedure will proceed automatically after clicking **Import**.

## System File Update—By Backup Media

**ABC (Auto-Backup Configurator) Configuration**

<input checked="" type="checkbox"/> Auto load ABC's system configurations when system boots up	<input type="button" value="Activate"/>
Save the current configurations to ABC	<input type="button" value="Save"/>
Load the ABC's configurations to Switch	<input type="button" value="Load"/>

*Auto load system configurations when system boots up*

Setting	Description	Factory Default
Enable	Enables Auto load system configurations when system boots up	Enable
Disable	Disables Auto load system configurations when system boots up	

*Save the current configurations to ABC*

To export the current configuration file of the EDS-516A, click on **Save** to save it to the ABC.

*Load the ABC's configurations to the Switch*

To import the configuration file of the EDS-516A, click on **Load** to load it to the Switch.

## Restart

### Restart

This function will restart MOXA EtherDevice Switch.

Activate

This function is used to restart the MOXA EtherDevice Switch.

## Factory Default

### Reset to Factory Default

This function will reset all settings to their factory default values.  
Be aware that previous settings will be lost.

Activate

The Factory Default function is included to give users a quick way of restoring the EDS-516A's configuration settings to their factory default values. This function is available in the Console utility (serial or Telnet), and Web Browser interface.

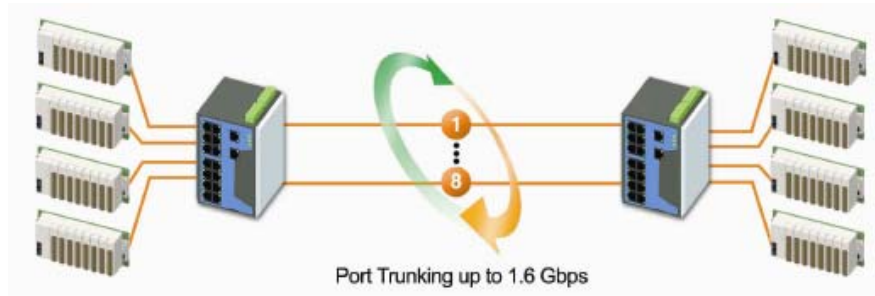
NOTE	After activating the Factory Default function, you will need to use the default network settings to re-establish a web-browser or Telnet connection with your EDS-516A.
------	---

## Using Port Trunking

Link Aggregation allows one or more links to be aggregated together to form a Link Aggregation Group. A MAC client can treat Link Aggregation Groups as if they were a single link.

EDS-516A's Port Trunking feature allows devices to communicate by aggregating up to 2 trunk groups, with a maximum of 8 ports for each group. If one of the 8 ports fails, the other seven ports will provide back up and share the traffic automatically.

Port trunking can be used to combine up to 8 ports between two EDS-516A switches. If all ports on both switch units are configured as 100BaseTX and they are operating in full duplex, the potential bandwidth of the connection will be 1600 Mbps.



## The Port Trunking Concept

MOXA has developed a proprietary Port Trunking protocol that provides the following benefits:

- Gives you more flexibility in setting up your network connections, since the bandwidth of a link can be doubled, tripled, or quadrupled.
- Provides redundancy—if one link is broken, the remaining trunked ports share the traffic within this trunk group.
- Load sharing—MAC Client traffic may be distributed across multiple links.
- To avoid broadcast storms or loops in your network while configuring a trunk, first disable or disconnect all ports that you want to add to the trunk or remove from the trunk. After you finish configuring the trunk, enable or re-connect the ports.

If all ports on both switch units are configured as 100BaseTX and they are operating in full duplex, the potential bandwidth of the connection will be up to 1.6 Gbps on the EDS-516A. This means that users can connect one EDS-516A to another EDS-516A by Port Trunking to double, triple, or quadruple the bandwidth of the connection.

When configuring Port Trunking, note that:

Each EDS-516A can set a maximum of 2 Port Trunking groups (Trk1/Trk2, 2 trunk groups for 10/100M ports)

When you activate Port Trunking settings, some advanced functions that you setup with the original ports will either be set to factory default values, or disabled:

- Communication Redundancy will be set to the factory default
- Traffic Prioritization will be set to the factory default
- Port-based VLAN or 802.1Q VLAN will be set to the factory default
- Multicast Filtering will be set to the factory default
- Rate Limiting will be set to the factory default
- Port Access Control will be set to the factory default
- Email and Relay Warning will be set to the factory default
- Set Device IP will be set to the factory default
- Mirror Port will be set to the factory default

You can setup these features again on your Trunking Port.

## Configuring Port Trunking

The **Port Trunking Settings** page is used to assign ports to a Trunk Group.

**Port Trunking Settings**

Trunk Group: Trk1 Trunk Type: Static

**Member Ports**

Port	Enable	Description	Name	Speed	FDX Flow Ctrl

Up Down

**Available Ports**

Port	Enable	Description	Name	Speed	FDX Flow Ctrl
<input type="checkbox"/> 1	Yes	100TX,RJ45.		Auto	Enable
<input type="checkbox"/> 2	Yes	100TX,RJ45.		Auto	Enable
<input type="checkbox"/> 3	Yes	100TX,RJ45.		Auto	Enable
<input type="checkbox"/> 4	Yes	100TX,RJ45.		Auto	Enable

Activate

**Step 1:** Select Trk1, Trk2 from the **Trunk Group** drop-down box.

**Step 2:** Select Static, or LACP from the **Trunk Type** drop-down box.

**Step 3:** Under **Member Ports** and **Available Ports**, select the specific ports.

**Step 4:** Use the **Up / Down** buttons to add/remove designated ports to/from a trunk group.

### Trunk Group (Maximum of 2 trunk groups)

Setting	Description	Factory Default
Trk1, Trk2	Display or designate the Trunk Type and Member Ports for Trunk Groups 1, 2.	Trk1

### Trunk Type

Setting	Description	Factory Default
Static	Designated MOXA proprietary trunking protocol	Static
LACP	Designated LACP (IEEE 802.3ad, Link Aggregation Control Protocol)	Static

### Available Ports/Member Port

Setting	Description	Factory Default
Member/Available Ports	Use <b>Up/Down</b> buttons to add/remove specific ports from available ports to/from trunk group.	N/A
Check box	Check to designate which ports to add or remove.	Unchecked
Port	Port number	N/A
Port description	Displays the media type for each module's port	N/A
Name	Max. 63 Characters	N/A
Speed	Indicates the transmission speed (100M-Full, 100M-Half, 10M-Full, or 10M-Half)	N/A
FDX Flow Control	Indicates if the FDX flow control of this port is "Enabled" or "Disabled."	N/A

Up	Add designated ports into trunk group from available ports.	N/A
Down	Remove designated ports from trunk group to available port.	N/A

Trunk Table

Trunk Group	Member Port	Status
Trk1 (Static)	1	Success
	2	Fail
	3	Fail

Trunk Table

Setting	Description
Trunk Group	Displays the Trunk Type and Trunk Group.
Member Port	Display which member ports belong to the trunk group.
Status	<b>Success</b> means port trunking is working properly. <b>Fail</b> means port trunking is not working properly.

## Configuring SNMP

The EDS-516A supports SNMP V1/V2c/V3. SNMP V1, and SNMP V2c use a community string match for authentication, which means that SNMP servers access all objects with read-only or read/write permissions using the community string *public/private* (default value). SNMP V3, which requires you to select an authentication level of MD5 or SHA, is the most secure protocol. You can also enable data encryption to enhance data security.

SNMP security modes and security levels supported by the EDS-516A are shown in the following table. Select the security mode and level that will be used to communicate between the SNMP agent and manager.

Protocol Version	UI Setting	Authentication Type	Data Encryption	Method
SNMP V1, V2c	V1, V2c Read Community	Community string	No	Use a community string match for authentication
	V1, V2c Write/Read Community	Community string	No	Use a community string match for authentication
SNMP V3	No-Auth	No	No	Use account with admin or user to access objects
	MD5 or SHA	Authentication based on MD5 or SHA	No	Provides authentication based on HMAC-MD5, or HMAC-SHA algorithms. 8-character passwords are the minimum requirement for authentication.
	MD5 or SHA	Authentication based on MD5 or SHA	Data encryption key	Provides authentication based on HMAC-MD5 or HMAC-SHA algorithms, and data encryption key. 8-character passwords and a data encryption key are the minimum requirements for authentication and encryption.

These parameters are configured on the SNMP page. A more detailed explanation of each parameter follows.

## SNMP Read/Write Settings

### *SNMP Versions*

Setting	Description	Factory Default
V1, V2c, V3, or V1, V2c, or V3 only	Select the SNMP protocol version used to manage the switch.	V1, V2c

### *V1, V2c Read Community*

Setting	Description	Factory Default
V1, V2c Read Community	Use a community string match with a maximum of 30 characters for authentication. The SNMP agent accesses all objects with read-only permissions using the community string <i>public</i> .	public

### *V1, V2c Write/Read Community*

Setting	Description	Factory Default
V1, V2c Read/Write Community	Uses a community string match with a maximum of 30 characters for authentication. The SNMP servers access all objects with read/write permissions using the community string <i>private</i> .	private

For SNMP V3, there are two levels of privileges for different accounts to access the EDS-516A. **Admin** privilege allows access, and authorization to read and write the MIB file. **User** privilege only allows reading the MIB file, but does not have authorization to write.

### *Admin Auth. Type (for SNMP V1, V2c, V3, and V3 only)*

Setting	Description	Factory Default
No-Auth	Use admin. account to access objects. No authentication	No
MD5-Auth	Provide authentication based on the HMAC-MD5 algorithms. 8-character passwords are the minimum requirement for authentication.	No
SHA-Auth	Provide authentication based on the HMAC-SHA algorithms. 8-character passwords are the minimum requirement for authentication.	No

### *Admin Data Encryption Key (for SNMP V1, V2c, V3, and V3 only)*

Setting	Description	Factory Default
Enable	8-character data encryption key is the minimum requirement for data encryption (maximum of 30 characters)	No
Disable	No data encryption	No

*User Auth. Type (for SNMP V1, V2c, V3 and V3 only)*

Setting	Description	Factory Default
No-Auth	Use admin account or user account to access objects. No authentication.	No
MD5-Auth	Provides authentication based on the HMAC-MD5 algorithms. 8-character passwords are the minimum requirement for authentication.	No
SHA-Auth	Provides authentication based on the HMAC-SHA algorithms. 8-character passwords are the minimum requirement for authentication.	No

*User Data Encryption Key (for SNMP V1, V2c, V3 and V3 only)*

Setting	Description	Factory Default
Enable	8-character data encryption key is the minimum requirement for data encryption (maximum of 30 characters)	No
Disable	No data encryption	No

## Trap Settings

*1<sup>st</sup> Trap Server IP/Name*

Setting	Description	Factory Default
IP or Name	Enter the IP address or name of the 1 <sup>st</sup> Trap Server used by your network.	<i>None</i>

*1<sup>st</sup> Trap Community*

Setting	Description	Factory Default
character string	Use a community string match for authentication (maximum of 30 characters).	public

*2<sup>nd</sup> Trap Server IP/Name*

Setting	Description	Factory Default
IP or Name	Enter the IP address or name of the 2 <sup>nd</sup> Trap Server used by your network.	<i>None</i>

*2<sup>nd</sup> Trap Community*

Setting	Description	Factory Default
character string	Use a community string match for authentication (maximum of 30 characters).	public

## Private MIB information

*Switch Object ID*

Setting	Description	Factory Default
8691.7.5	EDS-516A's enterprise value	Fixed

NOTE: The Switch Object ID cannot be changed.

## Using Communication Redundancy

Setting up Communication Redundancy on your network helps protect critical links against failure, protects against network loops, and keeps network downtime at a minimum.

The Communication Redundancy function allows the user to set up *redundant loops* in the network to provide a backup data transmission route in the event that a cable is inadvertently disconnected or damaged. This feature is particularly important for industrial applications, since it could take several minutes to locate the disconnected or severed cable. For example, if the EDS-516A is used as a key communications component of a production line, several minutes of downtime could result in a big loss in production and revenue. The EDS-516A supports three different protocols to support this communication redundancy function—**Rapid Spanning Tree/ Spanning Tree Protocol (IEEE 802.1W/1D)**, **Turbo Ring**, and **Turbo Ring V2**.

When configuring a redundant ring, all switches on the same ring must be configured to use the same redundancy protocol. You cannot mix the “Turbo Ring,” “Turbo Ring V2,” and STP/RSTP protocols on the same ring. The following table lists the key differences between each feature. Use this information to evaluate the benefits of each, and then determine which features are most suitable for your network.

	Turbo Ring V2	Turbo Ring	STP	RSTP
Topology	Ring	Ring	Ring, Mesh	Ring, Mesh
Recovery Time	< 20 ms	< 300 ms	Up to 30 sec.	Up to 5 sec

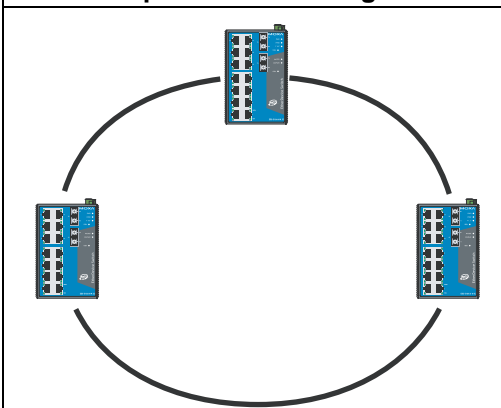
- NOTE Most of MOXA's managed switches now support two proprietary Turbo Ring protocols:
- (1) **“Turbo Ring”** refers to the original version of MOXA's proprietary redundant ring protocol, which has a recovery time of under 300 ms.
  - (2) **“Turbo Ring V2”** refers to the new generation Turbo Ring, which has a recovery time of under 20 ms.

In this manual, we use the terminology **“Turbo Ring” ring** and **“Turbo Ring V2” ring** to differentiate between rings configured for one or the other of these protocols.

## The Turbo Ring Concept

MOXA developed the proprietary Turbo Ring protocol to optimize communication redundancy and achieve a faster recovery time on the network.

The Turbo Ring and Turbo Ring V2 protocols identify one switch as the *master* of the network, and then automatically block packets from traveling through any of the network's redundant loops. In the event that one branch of the ring gets disconnected from the rest of the network, the protocol automatically readjusts the ring so that the part of the network that was disconnected can reestablish contact with the rest of the network.

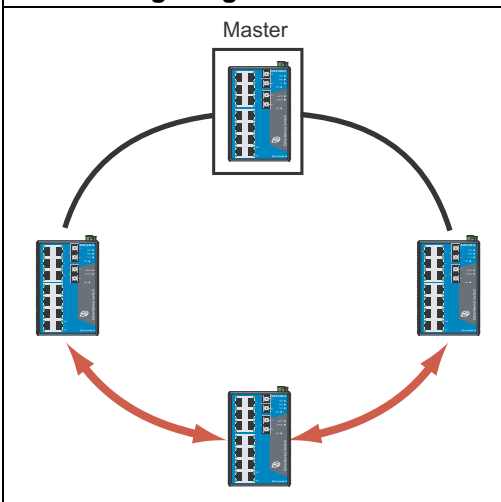
**Initial setup of a “Turbo Ring” or “Turbo Ring V2” ring**

1. For each switch in the ring, select any two ports as the redundant ports.
2. Connect redundant ports on neighboring switches to form the redundant ring.

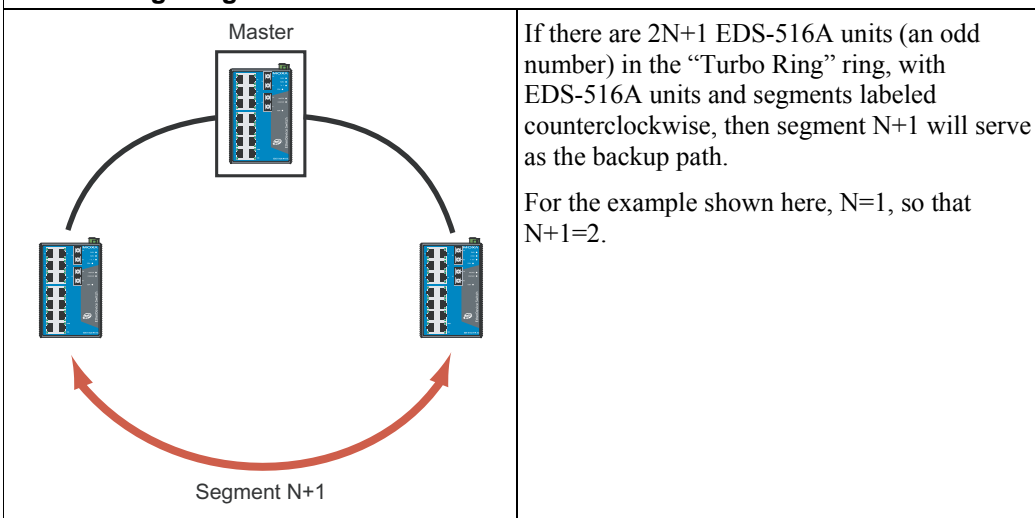
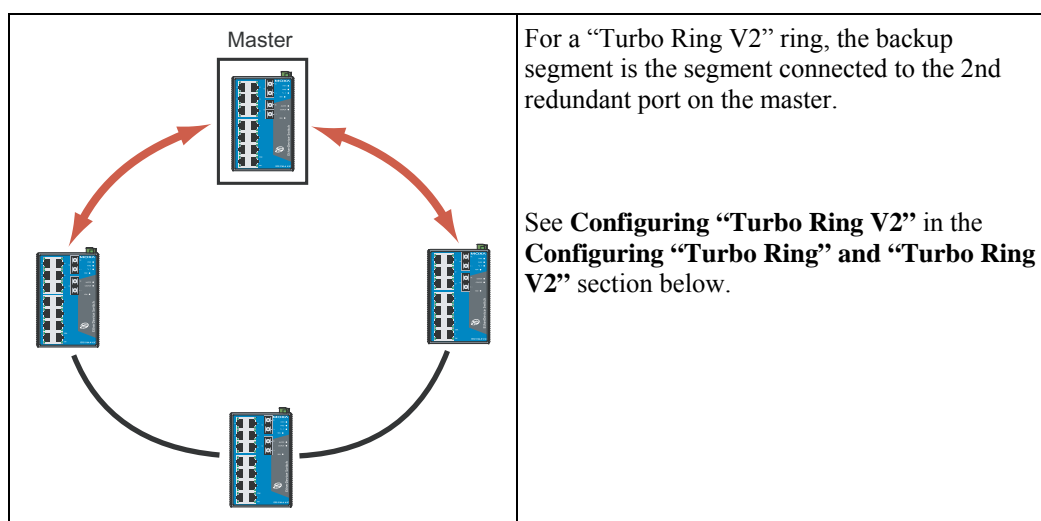
The user does not need to configure any of the switches as the master to use Turbo Ring or Turbo Ring V2. If none of the switches in the ring is configured as the master, then the protocol will automatically assign master status to one of the switches. In fact, the master is only used to identify which segment in the redundant ring acts as the backup path. In the following subsections, we explain how the redundant path is selected for rings configured for Turbo Ring, and Turbo Ring V2.

**Determining the Redundant Path of a “Turbo Ring” Ring**

In this case, the redundant segment (i.e., the segment that will be blocked during normal operation) is determined by the number of EDS-516A units that make up the ring, and where the ring master is located.

**“Turbo Ring” rings with an even number of EDS-516A units**

If there are  $2N$  EDS-516A units (an even number) in the “Turbo Ring” ring, then the backup segment is one of the two segments connected to the  $(N+1)$ st EDS-516A (i.e., the EDS-516A unit directly opposite the master).

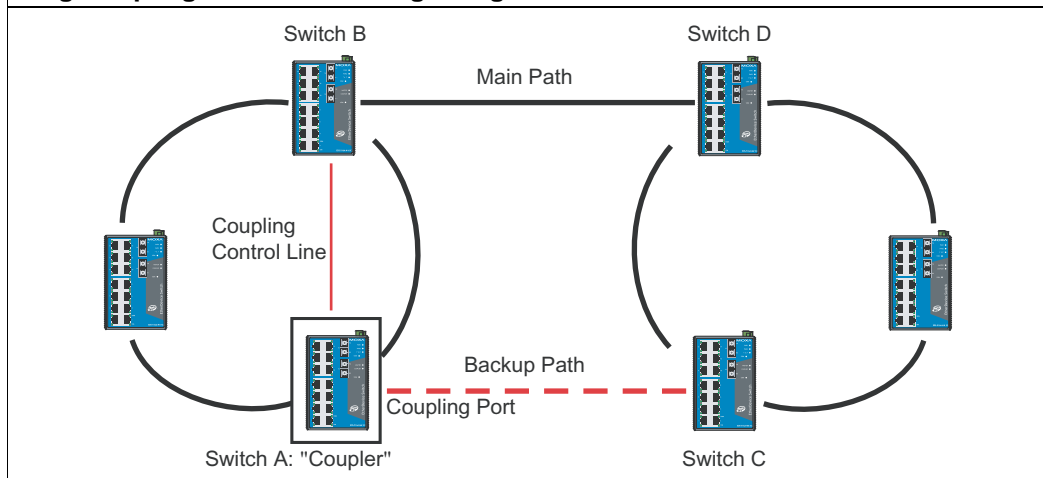
**“Turbo Ring” rings with an odd number of EDS-516A units****Determining the Redundant Path of a “Turbo Ring V2” Ring****Ring Coupling Configuration**

For some systems, it may not be convenient to connect all devices in the system to create one BIG redundant ring, since some devices could be located in a remote area. For these systems, “Ring Coupling” can be used to separate the devices into different smaller redundant rings, but in such a way that they can still communicate with each other.

**ATTENTION**

In a VLAN environment, the user must set “Redundant Port,” “Coupling Port,” and “Coupling Control Port” to join all VLANs, since these ports act as the “backbone” to transmit all packets of different VLANs to different EDS-516A units.

### Ring Coupling for a "Turbo Ring" Ring

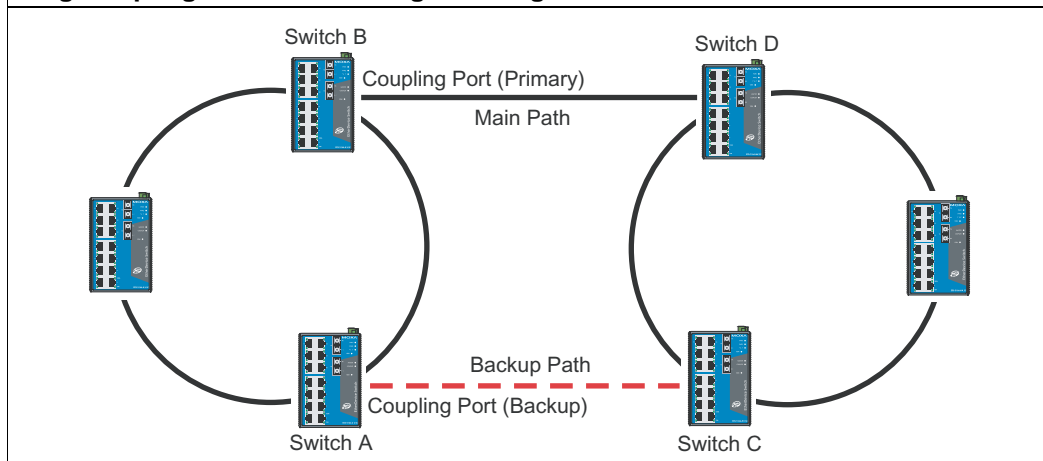


To configure the Ring Coupling function for a "Turbo Ring" ring, select two EDS-516A units (e.g., Switch A and B in the above figure) in the ring, and another two EDS-516A units in the adjacent ring (e.g., Switch C and D).

Decide which two ports in each switch are appropriate to be used as coupling ports, and then link them together. Next, assign one switch (e.g., Switch A) to be the "coupler," and connect the coupler's coupling control port with Switch B (for this example).

The coupler switch (i.e., Switch A) will monitor switch B through the coupling control port to determine whether or not the coupling port's backup path should be recovered.

### Ring Coupling for a "Turbo Ring V2" Ring



Note that the ring coupling settings for a "Turbo Ring V2" ring are different from a "Turbo Ring" ring. For Turbo Ring V2, Ring Coupling is enabled by configuring the "Coupling Port (Primary)" on Switch B, and the "Coupling Port (Backup)" on Switch A only. You do not need to set up a coupling control port, so that a "Turbo Ring V2" ring does not use a coupling control line.

The "Coupling Port (Backup)" on Switch A is used for the backup path, and connects directly to an extra network port on Switch C. The "Coupling Port (Primary)" on Switch B monitors the status of the main path, and connects directly to an extra network port on Switch D. With ring coupling established, Switch A can activate the backup path as soon as it detects a problem with the main path.

**ATTENTION**

Ring Coupling only needs to be enabled on one of the switches serving as the Ring Coupler. The Coupler must designate different ports as the two Turbo Ring ports and the coupling port.

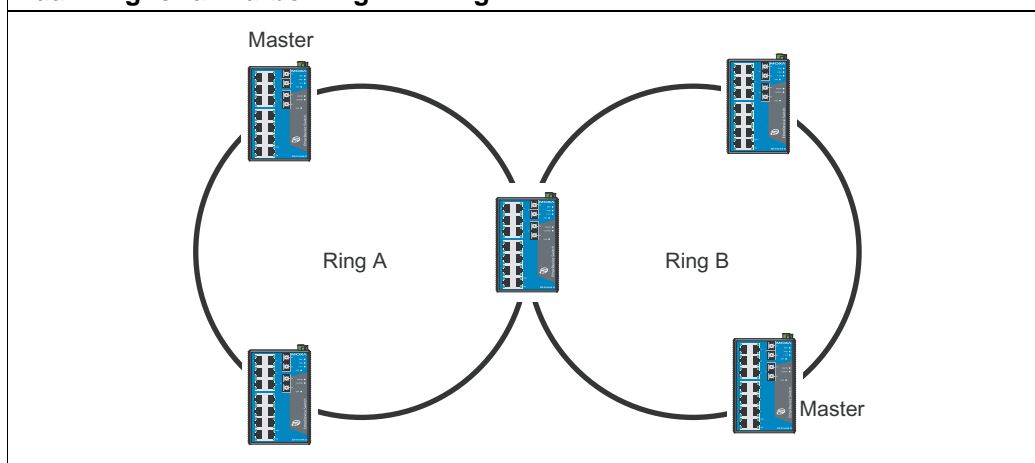
**NOTE**

You do not need to use the same EDS-516A unit for both Ring Coupling and Ring Master.

### Dual-Ring Configuration (applies only to “Turbo Ring V2”)

The “dual-ring” option provides another ring coupling configuration, in which two adjacent rings share one switch. This type of configuration is ideal for applications that have inherent cabling difficulties.

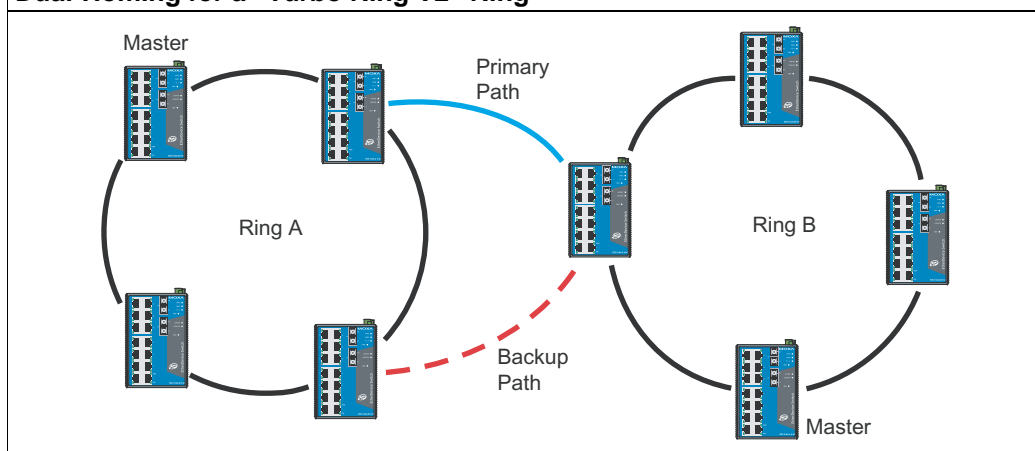
#### Dual-Ring for a “Turbo Ring V2” Ring



### Dual-Homing Configuration (applies only to “Turbo Ring V2”)

The “dual-homing” option uses a single Ethernet switch to connect two networks. The primary path is the operating connection, and the backup path is a back-up connection that is activated in the event that the primary path connection fails.

#### Dual-Homing for a “Turbo Ring V2” Ring



## Configuring “Turbo Ring” and “Turbo Ring V2”

Use the **Communication Redundancy** page to configure select “Turbo Ring” or “Turbo Ring V2.” Note that configuration pages for these two protocols are different.

### Configuring “Turbo Ring”

### Communication Redundancy

#### Current Status

Now Active

None

Master/Slave

---

Redundant Ports Status

1st Port

---

2nd Port

---

Ring Coupling Ports Status

---

Coupling Port

---

Coupling Control Port

---

#### Settings

Redundancy Protocol

Turbo Ring

☐ Set as Master

Redundant Ports 1st Port

4

2nd Port

5

☐ Enable Ring Coupling

Coupling Port

2

Coupling Control Port

3

Activate

#### Explanation of “Current Status” Items

**Now Active**

Shows which communication protocol is in use: **Turbo Ring**, **Turbo Ring V2**, **RSTP**, or **none**.

**Master/Slave**

Indicates whether or not this EDS-516A is the Master of the Turbo Ring. (This field appears only when selected to operate in Turbo Ring or Turbo Ring V2 mode.)

NOTE

The user does not need to set the master to use Turbo Ring. If no master is set, the Turbo Ring protocol will assign master status to one of the EDS-516A units in the ring. The master is only used to determine which segment serves as the backup path.

**Redundant Ports Status (1st Port, 2nd Port)**

**Ring Coupling Ports Status (Coupling Port, Coupling Control Port)**

The “Ports Status” indicators show **Forwarding** for normal transmission, **Blocking** if this port is connected to a backup path and the path is blocked, and **Link down** if there is no connection.

**Explanation of “Settings” Items*****Redundancy Protocol***

Setting	Description	Factory Default
Turbo Ring	Select this item to change to the Turbo Ring configuration page.	RSTP (IEEE 802.1W/1D) (No ports are enabled.)
Turbo Ring V2	Select this item to change to the Turbo Ring V2 configuration page.	
RSTP (IEEE 802.1W/1D)	Select this item to change to the RSTP configuration page.	

***Set as Master***

Setting	Description	Factory Default
Enabled	Select this EDS-516A as Master	Not checked
Disabled	Do not select this EDS-516A as Master	

***Redundant Ports***

Setting	Description	Factory Default
1st Port	Select any port of the EDS-516A to be one of the redundant ports.	port 15
2nd Port	Select any port of the EDS-516A to be one of the redundant ports.	port 16

***Enable Ring Coupling***

Setting	Description	Factory Default
Enable	Select this EDS-516A as Coupler	Not checked
Disable	Do not select this EDS-516A as Coupler	

***Coupling Port***

Setting	Description	Factory Default
Coupling Port	Select any port of the EDS-516A to be the coupling port	port 13

***Coupling Control Port***

Setting	Description	Factory Default
Coupling Control Port	Select any port of the EDS-516A to be the coupling control port	port 14

## Configuring “Turbo Ring V2”

**Communication Redundancy**

**Current Status**

Now Active: **Turbo Ring V2**

Ring 1	Ring 2
Status: <b>Break</b>	Status: --
Master/Slave: <b>Master</b>	Master/Slave: --
1st Ring Port Status: <b>Link down</b>	1st Ring Port Status: --
2nd Ring Port Status: <b>Link down</b>	2nd Ring Port Status: --

Coupling Mode: **none**

Coupling Port status: Primary Port -- Backup Port --

**Settings**

Redundancy Protocol: Turbo Ring V2

☒ Enable Ring 1 ☐ Enable Ring 2

☐ Set as Master ☐ Set as Master

Redundant Ports 1st Port: 7 2nd Port: 8

Redundant Ports 1st Port: 5 2nd Port: 6

☐ Enable Ring Coupling

Coupling Mode: Dual Homing

Primary Port: 5 Backup Port: 6

**Activate**

**NOTE** When using the Dual-Ring architecture, users must configure settings for both Ring 1 and Ring 2. In this case, the status of both rings will appear under “Current Status.”

### Explanation of “Current Status” Items

#### ***Now Active***

Shows which communication protocol is in use: **Turbo Ring**, **Turbo Ring V2**, **RSTP**, or **none**.

#### ***Ring 1/2—Status***

Shows **Healthy** if the ring is operating normally, and shows **Break** if the ring’s backup link is active.

#### ***Ring 1/2—Master/Slave***

Indicates whether or not this EDS-516A is the Master of the Turbo Ring. (This field appears only when selected to operate in Turbo Ring or Turbo Ring V2 mode.)

**NOTE** The user does not need to set the master to use Turbo Ring. If no master is set, the Turbo Ring protocol will assign master status to one of the EDS-516A units in the ring. The master is only used to determine which segment serves as the backup path.

#### ***Ring 1/2—1st Ring Port Status***

#### ***Ring 1/2—2nd Ring Port Status***

The “Ports Status” indicators show **Forwarding** for normal transmission, **Blocking** if this port is connected to a backup path and the path is blocked, and **Link down** if there is no connection.

***Coupling—Mode***

Indicates either **None**, **Dual Homing**, or **Ring Coupling**.

***Coupling—Coupling Port status***

Indicates either **Primary**, or **Backup**.

**Explanation of “Settings” Items*****Redundancy Protocol***

Setting	Description	Factory Default
Turbo Ring	Select this item to change to the Turbo Ring configuration page.	RSTP (IEEE 802.1W/1D) (No ports are enabled.)
Turbo Ring V2	Select this item to change to the Turbo Ring V2 configuration page.	
RSTP (IEEE 802.1W/1D)	Select this item to change to the RSTP configuration page.	

***Enable Ring 1***

Setting	Description	Factory Default
Enabled	Enable the Ring 1 settings	Not checked
Disabled	Disable the Ring 1 settings	

***Enable Ring 2\****

Setting	Description	Factory Default
Enabled	Enable the Ring 2 settings	Not checked
Disabled	Disable the Ring 2 settings	

\*You should enable both Ring 1 and Ring 2 when using the Dual-Ring architecture.

***Set as Master***

Setting	Description	Factory Default
Enabled	Select this EDS-516A as Master	Not checked
Disabled	Do not select this EDS-516A as Master	

***Redundant Ports***

Setting	Description	Factory Default
1st Port	Select any port of the EDS-516A to be one of the redundant ports.	Ring 1: port 15 Ring 2: port 13
2nd Port	Select any port of the EDS-516A to be one of the redundant ports.	Ring 1: port 16 Ring 2: port 14

***Enable Ring Coupling***

Setting	Description	Factory Default
Enable	Select this EDS-516A as Coupler	Not checked
Disable	Do not select this EDS-516A as Coupler	

***Coupling Mode***

Setting	Description	Factory Default
Dual Homing	Select this item to change to the Dual Homing configuration page	Primary Port: port 13 Backup Port: port 14
Ring Coupling (backup)	Select this item to change to the Ring Coupling (backup) configuration page	Coupling Port: port 13
Ring Coupling (primary)	Select this item to change to the Ring Coupling (primary) configuration page	Coupling Port: port 13

***Primary/Backup Port***

Setting	Description	Factory Default
Primary Port	Select any port of the EDS-516A to be the primary port.	port 13
Backup Port	Select any port of the EDS-516A to be the backup port.	port 14

## The STP/RSTP Concept

Spanning Tree Protocol (STP) was designed to help reduce link failures in a network, and provide protection from loops. Networks that have a complicated architecture are prone to broadcast storms caused by unintended loops in the network. The EDS-516A's STP feature is disabled by default. To be completely effective, you must enable RSTP/STP on every EDS-516A connected to your network.

Rapid Spanning Tree Protocol (RSTP) implements the Spanning Tree Algorithm and Protocol defined by IEEE Std 802.1w-2001. RSTP provides the following benefits:

- The topology of a bridged network will be determined much more quickly compared to STP.
- RSTP is backward compatible with STP, making it relatively easy to deploy. For example:
  - Defaults to sending 802.1D style BPDUs if packets with this format are received.
  - STP (802.1D) and RSTP (802.1W) can operate on different ports of the same EDS-516A. This feature is particularly helpful when the EDS-516A's ports connect to older equipment, such as legacy switches.

You get essentially the same functionality with RSTP and STP. To see how the two systems differ, see the *Differences between RSTP and STP* section in this chapter.

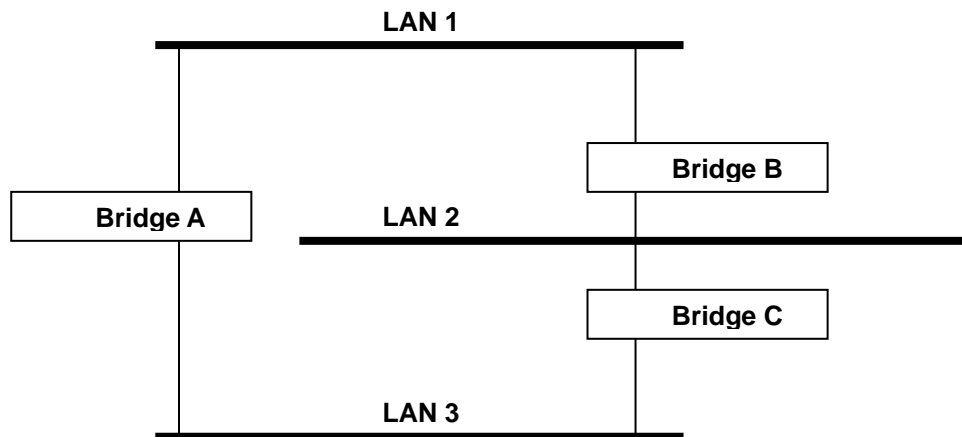
<b>NOTE</b>	The STP protocol is part of the IEEE Std 802.1D, 1998 Edition bridge specification. The following explanation uses bridge instead of switch.
-------------	--

### What is STP?

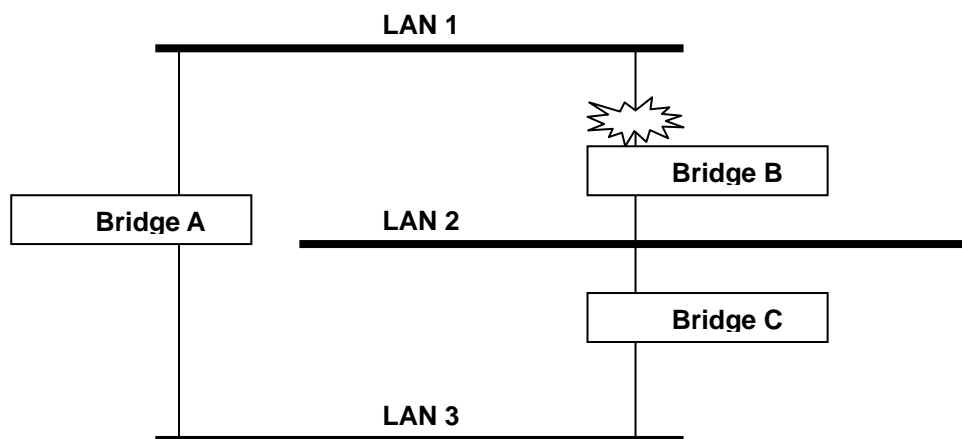
STP (802.1D) is a bridge-based system that is used to implement parallel paths for network traffic. STP uses a loop-detection process to:

- Locate and then disable less efficient paths (i.e., paths that have a lower bandwidth).
- Enable one of the less efficient paths if the most efficient path fails.

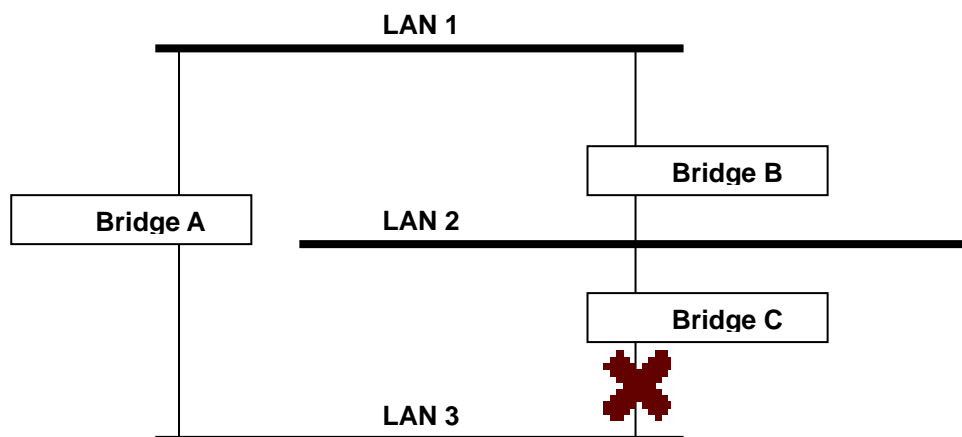
The figure below shows a network made up of three LANs separated by three bridges. Each segment uses at most two paths to communicate with the other segments. Since this configuration can give rise to loops, the network will overload if STP is NOT enabled.



If STP is enabled, it will detect duplicate paths and prevent, or *block*, one of them from forwarding traffic. In the following example, STP determined that traffic from LAN segment 2 to LAN segment 1 should flow through Bridges C and A because this path has a greater bandwidth and is therefore more efficient.



What happens if a link failure is detected? As shown in next figure, the STP process reconfigures the network so that traffic from LAN segment 2 flows through Bridge B.



STP will determine which path between each bridged segment is most efficient, and then assigns a specific reference point on the network. When the most efficient path has been identified, the other paths are blocked. In the previous 3 figures, STP first determined that the path through Bridge C was the most efficient, and as a result, blocked the path through Bridge B. After the failure of Bridge C, STP re-evaluated the situation and opened the path through Bridge B.

## How STP Works

When enabled, STP determines the most appropriate path for traffic through a network. The way it does this is outlined in the sections below.

### STP Requirements

Before STP can configure the network, the system must satisfy the following requirements:

- Communication between all the bridges. This communication is carried out using Bridge Protocol Data Units (BPDUs), which are transmitted in packets with a known multicast address.
- Each bridge must have a Bridge Identifier that specifies which bridge acts as the central reference point, or Root Bridge, for the STP system—bridges with a lower Bridge Identifier are more likely to be designated as the Root Bridge. The Bridge Identifier is calculated using the MAC address of the bridge and a priority defined for the bridge. The default priority of the EDS-516A is 32768.
- Each port has a cost that specifies the efficiency of each link. The efficiency cost is usually determined by the bandwidth of the link, with less efficient links assigned a higher cost. The following table shows the default port costs for a switch:

Port Speed	Path Cost 802.1D, 1998 Edition	Path Cost 802.1W-2001
10 Mbps	100	2,000,000
100 Mbps	19	200,000
1000 Mbps	4	20,000

### STP Calculation

The first step of the STP process is to perform calculations. During this stage, each bridge on the network transmits BPDUs. The following items will be calculated:

- Which bridge should be the Root Bridge. The Root Bridge is the central reference point from which the network is configured.
- The Root Path Costs for each bridge. This is the cost of the paths from each bridge to the Root Bridge.
- The identity of each bridge's Root Port. The Root Port is the port on the bridge that connects to the Root Bridge via the most efficient path. In other words, the port connected to the Root Bridge via the path with the lowest Root Path Cost. The Root Bridge, however, does not have a Root Port.
- The identity of the Designated Bridge for each LAN segment. The Designated Bridge is the bridge with the lowest Root Path Cost from that segment. If several bridges have the same Root Path Cost, the one with the lowest Bridge Identifier becomes the Designated Bridge. Traffic transmitted in the direction of the Root Bridge will flow through the Designated Bridge. The port on this bridge that connects to the segment is called the Designated Bridge Port.

### STP Configuration

After all the bridges on the network agree on the identity of the Root Bridge, and all other relevant parameters have been established, each bridge is configured to forward traffic only between its Root Port and the Designated Bridge Ports for the respective network segments. All other ports are blocked, which means that they will not be allowed to receive or forward traffic.

### STP Reconfiguration

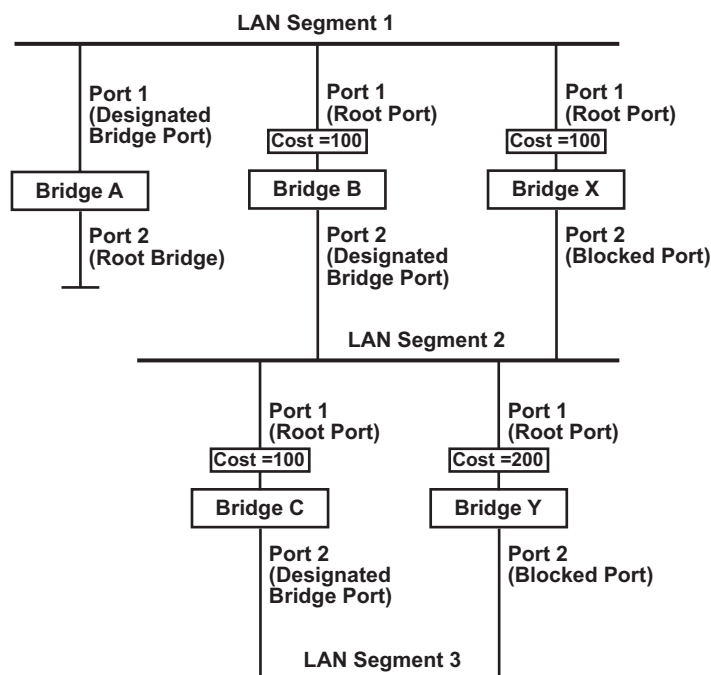
Once the network topology has stabilized, each bridge listens for Hello BPDUs transmitted from the Root Bridge at regular intervals. If a bridge does not receive a Hello BPDU after a certain interval (the Max Age time), the bridge assumes that the Root Bridge, or a link between itself and the Root Bridge, has gone down. This will trigger the bridge to reconfigure the network to account for the change. If you have configured an SNMP trap destination, when the topology of your network changes, the first bridge to detect the change sends out an SNMP trap.

### Differences between RSTP and STP

RSTP is similar to STP, but includes additional information in the BPDUs that allow each bridge to confirm that it has taken action to prevent loops from forming when it decides to enable a link to a neighboring bridge. Adjacent bridges connected via point-to-point links will be able to enable a link without waiting to ensure that all other bridges in the network have had time to react to the change. The main benefit of RSTP is that the configuration decision is made locally rather than network-wide, allowing RSTP to carry out automatic configuration and restore a link faster than STP.

### STP Example

The LAN shown in the following figure has three segments, with adjacent segments connected using two possible links. The various STP factors, such as Cost, Root Port, Designated Bridge Port, and Blocked Port are shown in the figure.



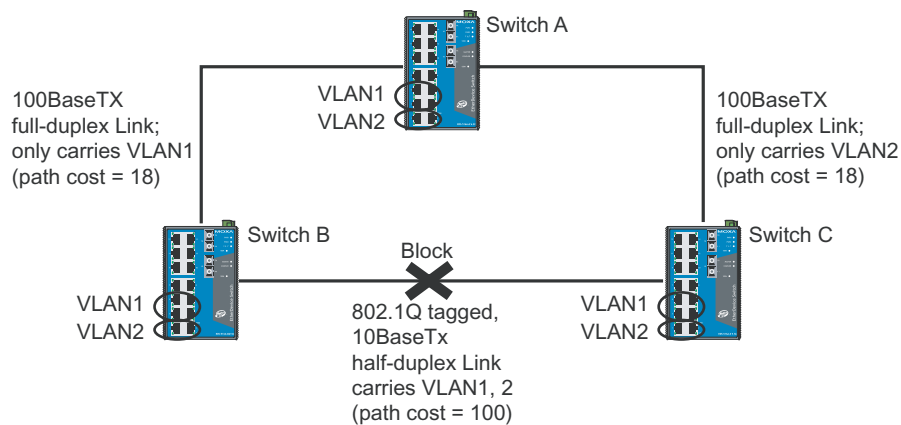
- Bridge A has been selected as the Root Bridge, since it was determined to have the lowest Bridge Identifier on the network.
- Since Bridge A is the Root Bridge, it is also the Designated Bridge for LAN segment 1. Port 1 on Bridge A is selected as the Designated Bridge Port for LAN Segment 1.
- Ports 1 of Bridges B, C, X, and Y are all Root Ports since they are nearest to the Root Bridge, and therefore have the most efficient path.
- Bridges B and X offer the same Root Path Cost for LAN segment 2. However, Bridge B was selected as the Designated Bridge for that segment since it has a lower Bridge Identifier. Port 2 on Bridge B is selected as the Designated Bridge Port for LAN Segment 2.

- Bridge C is the Designated Bridge for LAN segment 3, because it has the lowest Root Path Cost for LAN Segment 3:
  - The route through Bridges C and B costs 200 (C to B=100, B to A=100)
  - The route through Bridges Y and B costs 300 (Y to B=200, B to A=100)
- The Designated Bridge Port for LAN Segment 3 is Port 2 on Bridge C.

### Using STP on a Network with Multiple VLANs

IEEE Std 802.1D, 1998 Edition, does not take into account VLANs when calculating STP information—the calculations only depend on the physical connections. Consequently, some network configurations will result in VLANs being subdivided into a number of isolated sections by the STP system. You must ensure that every VLAN configuration on your network takes into account the expected STP topology and alternative topologies that may result from link failures.

The following figure shows an example of a network that contains VLANs 1 and 2. The VLANs are connected using the 802.1Q-tagged link between Switch B and Switch C. By default, this link has a port cost of 100 and is automatically blocked because the other Switch-to-Switch connections have a port cost of 36 (18+18). This means that both VLANs are now subdivided—VLAN 1 on Switch units A and B cannot communicate with VLAN 1 on Switch C, and VLAN 2 on Switch units A and C cannot communicate with VLAN 2 on Switch B.



To avoid subdividing VLANs, all inter-switch connections should be made members of all available 802.1Q VLANs. This will ensure connectivity at all times. For example, the connections between Switches A and B, and between Switches A and C should be 802.1Q tagged and carrying VLANs 1 and 2 to ensure connectivity.

See the “Configuring Virtual LANs” section for more information about VLAN Tagging.

## Configuring STP/RSTP

The following figures indicate which Spanning Tree Protocol parameters can be configured. A more detailed explanation of each parameter follows.

**Communication Redundancy**

**Current Status**

Now Active: **None**  
 Root/Not root: ---

**Settings**

Redundancy Protocol: RSTP (IEEE 802.1W/1D)  
 Bridge Priority: 32768  
 Hello Time: 2  
 Forwarding Delay: 15  
 Max Age: 20

Port	Enable RSTP	Port Priority	Port Cost	Status
2	<input type="checkbox"/>	128	200000	---
4	<input type="checkbox"/>	128	200000	---
5	<input type="checkbox"/>	128	200000	---
6	<input type="checkbox"/>	128	200000	---
7	<input type="checkbox"/>	128	200000	---
8	<input type="checkbox"/>	128	200000	---

Activate

At the top of this page, the user can check the “Current Status” of this function. For RSTP, you will see:

### ***Now Active:***

This will show which communication protocol is being used—Turbo Ring, RSTP, or neither.

### ***Root/Not Root***

This field will appear only when selected to operate in RSTP mode. It indicates whether or not this EDS-516A is the Root of the Spanning Tree (the root is determined automatically).

At the bottom of this page, the user can configure the “Settings” of this function. For RSTP, you can configure:

### ***Redundancy Protocol***

Setting	Description	Factory Default
Turbo Ring	Select this item to change to the Turbo Ring configuration page.	RSTP (IEEE 802.1W/1D) (No ports are enabled.)
Turbo Ring V2	Select this item to change to the Turbo Ring V2 configuration page.	
RSTP (IEEE 802.1W/1D)	Select this item to change to the RSTP configuration page.	

**Bridge priority**

Setting	Description	Factory Default
Numerical value selected by user	Increase this device's bridge priority by selecting a lower number. A device with a higher bridge priority has a greater chance of being established as the root of the Spanning Tree topology.	32768

**Forwarding Delay**

Setting	Description	Factory Default
Numerical value input by user	The amount of time this device waits before checking to see if it should change to a different state.	15 (sec.)

**Hello time (sec.)**

Setting	Description	Factory Default
Numerical value input by user	The root of the Spanning Tree topology periodically sends out a "hello" message to other devices on the network to check if the topology is healthy. The "hello time" is the amount of time the root waits between sending hello messages.	2

**Max. Age (sec.)**

Setting	Description	Factory Default
Numerical value input by user	If this device is not the root, and it has not received a hello message from the root in an amount of time equal to "Max. Age," then this device will reconfigure itself as a root. Once two or more devices on the network are recognized as a root, the devices will renegotiate to set up a new Spanning Tree topology.	20

**Enable STP per Port**

Setting	Description	Factory Default
Enable/Disable	Select to enable the port as a node on the Spanning Tree topology.	Disabled

**NOTE** We suggest not enabling the Spanning Tree Protocol once the port is connected to a device (PLC, RTU, etc.) as opposed to network equipment. The reason is that it will cause unnecessary negotiation.

**Port Priority**

Setting	Description	Factory Default
Numerical value selected by user	Increase this port's priority as a node on the Spanning Tree topology by entering a lower number.	128

**Port Cost**

Setting	Description	Factory Default
Numerical value input by user	Input a higher cost to indicate that this port is less suitable as a node for the Spanning Tree topology.	200000

**Port Status**

Indicates the current Spanning Tree status of this port. "Forwarding" for normal transmission, or "Blocking" to block transmission.

**Configuration Limits of RSTP/STP**

The Spanning Tree Algorithm places limits on three of the configuration items described previously:

[Eq. 1]:  $1 \text{ sec} \leq \text{Hello Time} \leq 10 \text{ sec}$

[Eq. 2]:  $6 \text{ sec} \leq \text{Max. Age} \leq 40 \text{ sec}$

[Eq. 3]:  $4 \text{ sec} \leq \text{Forwarding Delay} \leq 30 \text{ sec}$

These three variables are further restricted by the following two inequalities:

[Eq. 4]:  $2 * (\text{Hello Time} + 1 \text{ sec}) \leq \text{Max. Age} \leq 2 * (\text{Forwarding Delay} - 1 \text{ sec})$

The EDS-516A's firmware will alert you immediately if any of these restrictions are violated. For example, setting

Hello Time = 5 sec, Max. Age = 20 sec, and Forwarding Delay = 4 sec does not violate Eqs. 1 through 3, but does violate Eq. 4, since in this case,

$2 * (\text{Hello Time} + 1 \text{ sec}) = 12 \text{ sec}$ , and  $2 * (\text{Forwarding Delay} - 1 \text{ sec}) = 6 \text{ sec}$ .

You can remedy the situation in many ways. One solution is simply to increase the Forwarding Delay value to at least 11 sec.

**HINT:** Perform the following steps to avoid guessing:

Step 1: Assign a value to "Hello Time" and then calculate the left most part of Eq. 4 to get the lower limit of "Max. Age."

Step 2: Assign a value to "Forwarding Delay" and then calculate the right most part of Eq. 4 to get the upper limit for "Max. Age."

Step 3: Assign a value to "Forwarding Delay" that satisfies the conditions in Eq. 3 and Eq. 4.

**Using Traffic Prioritization**

The EDS-516A's traffic prioritization capability provides Quality of Service (QoS) to your network by making data delivery more reliable. You can prioritize traffic on your network to ensure that high priority data is transmitted with minimum delay. Traffic can be controlled by a set of rules to obtain the required Quality of Service for your network. The rules define different types of traffic and specify how each type should be treated as it passes through the switch. The EDS-516A can inspect both IEEE 802.1p/1Q layer 2 CoS tags, and even layer 3 TOS information to provide consistent classification of the entire network. The EDS-516A's QoS capability improves the performance and determinism of industrial networks for mission critical applications.

## The Traffic Prioritization Concept

### What is Traffic Prioritization?

Traffic prioritization allows you to prioritize data so that time-sensitive and system-critical data can be transferred smoothly and with minimal delay over a network. The benefits of using traffic prioritization are:

- Improve network performance by controlling a wide variety of traffic and managing congestion.
- Assign priorities to different categories of traffic. For example, set higher priorities for time-critical or business-critical applications.
- Provide predictable throughput for multimedia applications, such as video conferencing or voice over IP, and minimize traffic delay and jitter.
- Improve network performance as the amount of traffic grows. This will save cost by reducing the need to keep adding bandwidth to the network.

### How Traffic Prioritization Works

Traffic prioritization uses the four traffic queues that are present in your EDS-516A to ensure that high priority traffic is forwarded on a different queue from lower priority traffic. This is what provides Quality of Service (QoS) to your network.

EDS-516A traffic prioritization depends on two industry-standard methods:

- **IEEE 802.1D**—a layer 2 marking scheme.
- **Differentiated Services (DiffServ)**—a layer 3 marking scheme.

#### IEEE 802.1D Traffic Marking

The IEEE Std 802.1D, 1998 Edition marking scheme, which is an enhancement to IEEE Std 802.1D, enables Quality of Service on the LAN. Traffic service levels are defined in the IEEE 802.1Q 4-byte tag, which is used to carry VLAN identification as well as IEEE 802.1p priority information. The 4-byte tag immediately follows the destination MAC address and Source MAC address.

The IEEE Std 802.1D, 1998 Edition priority marking scheme assigns an IEEE 802.1p priority level between 0 and 7 to each frame. This determines the level of service that that type of traffic should receive. Refer to the table below for an example of how different traffic types can be mapped to the eight IEEE 802.1p priority levels.

IEEE 802.1p Priority Level	IEEE 802.1D Traffic Type
0	Best Effort (default)
1	Background
2	Standard (spare)
3	Excellent Effort (business critical)
4	Controlled Load (streaming multimedia)
5	Video (interactive media); less than 100 milliseconds of latency and jitter
6	Voice (interactive voice); less than 10 milliseconds of latency and jitter
7	Network Control Reserved traffic

Even though the IEEE 802.1D standard is the most widely used prioritization scheme in the LAN environment, it still has some restrictions:

- It requires an additional 4-byte tag in the frame, which is normally optional in Ethernet networks. Without this tag, the scheme cannot work.
- The tag is part of the IEEE 802.1Q header, so to implement QoS at layer 2, the entire network must implement IEEE 802.1Q VLAN tagging.

It is only supported on a LAN and not routed across WAN links, since the IEEE 802.1Q tags are removed when the packets pass through a router.

### **Differentiated Services (DiffServ) Traffic Marking**

DiffServ is a Layer 3 marking scheme that uses the DiffServ Code Point (DSCP) field in the IP header to store the packet priority information. DSCP is an advanced intelligent method of traffic marking as you can choose how your network prioritizes different types of traffic. DSCP uses 64 values that map to user-defined service levels, allowing you to establish more control over network traffic.

Advantages of DiffServ over IEEE 802.1D are:

- Configure how you want your switch to treat selected applications and types of traffic by assigning various grades of network service to them.
- No extra tags are required in the packet.
- DSCP uses the IP header of a packet and therefore priority is preserved across the Internet.
- DSCP is backward compatible with IPV4 TOS, which allows operation with existing devices that use a layer 3 TOS enabled prioritization scheme.

### **Traffic Prioritization**

The EDS-516A classifies traffic based on layer 2 of the OSI 7 layer model, and the switch prioritizes received traffic according to the priority information defined in the received packet. Incoming traffic is classified based upon the IEEE 802.1D frame and is assigned to the appropriate priority queue based on the IEEE 802.1p service level value defined in that packet. Service level markings (values) are defined in the IEEE 802.1Q 4-byte tag, and consequently traffic will only contain 802.1p priority markings if the network is configured with VLANs and VLAN tagging. The traffic flow through the switch is as follows:

1. A packet received by the EDS-516A may or may not have an 802.1p tag associated with it. If it does not, then it is given a default 802.1p tag (which is usually 0). Alternatively, the packet may be marked with a new 802.1p value, which will result in all knowledge of the old 802.1p tag being lost.
2. As the 802.1p priority levels are fixed to the traffic queues, the packet will be placed in the appropriate priority queue, ready for transmission through the appropriate egress port. When the packet reaches the head of its queue and is about to be transmitted, the device determines whether or not the egress port is tagged for that VLAN. If it is, then the new 802.1p tag is used in the extended 802.1D header.

The EDS-516A will check a packet received at the ingress port for IEEE 802.1D traffic classification, and then prioritize it based upon the IEEE 802.1p value (service levels) in that tag. It is this 802.1p value that determines to which traffic queue the packet is mapped.

### **Traffic Queues**

The EDS-516A hardware has multiple traffic queues that allow packet prioritization to occur. Higher priority traffic can pass through the EDS-516A without being delayed by lower priority traffic. As each packet arrives in the EDS-516A, it passes through any ingress processing (which includes classification, marking/re-marking), and is then sorted into the appropriate queue. The switch then forwards packets from each queue.

The EDS-516A supports two different queuing mechanisms:

- **Weight Fair:** This method services all the traffic queues, giving priority to the higher priority queues. Under most circumstances, this method gives high priority precedence over low-priority, but in the event that high-priority traffic exceeds the link capacity, lower priority traffic is not blocked.
- **Strict:** This method services high traffic queues first; low priority queues are delayed until no more high priority data needs to be sent. This method always gives precedence to high priority over low-priority.

## Configuring Traffic Prioritization

Quality of Service (QoS) provides a traffic prioritization capability to ensure that important data is delivered consistently and predictably. The EDS-516A can inspect IEEE 802.1p/1Q layer 2 CoS tags, and even layer 3 TOS information, to provide a consistent classification of the entire network. The EDS-516A's QoS capability improves your industrial network's performance and determinism for mission critical applications.

### QoS Classification

Port	Port Highest Priority	Inspect ToS	Inspect CoS
1	<input type="checkbox"/>	<input checked="" type="checkbox"/>	<input checked="" type="checkbox"/>
2	<input type="checkbox"/>	<input checked="" type="checkbox"/>	<input checked="" type="checkbox"/>
3	<input type="checkbox"/>	<input checked="" type="checkbox"/>	<input checked="" type="checkbox"/>
4	<input type="checkbox"/>	<input checked="" type="checkbox"/>	<input checked="" type="checkbox"/>
5	<input type="checkbox"/>	<input checked="" type="checkbox"/>	<input checked="" type="checkbox"/>
6	<input type="checkbox"/>	<input checked="" type="checkbox"/>	<input checked="" type="checkbox"/>
7	<input type="checkbox"/>	<input checked="" type="checkbox"/>	<input checked="" type="checkbox"/>
8	<input type="checkbox"/>	<input checked="" type="checkbox"/>	<input checked="" type="checkbox"/>
9	<input type="checkbox"/>	<input checked="" type="checkbox"/>	<input checked="" type="checkbox"/>
10	<input type="checkbox"/>	<input checked="" type="checkbox"/>	<input checked="" type="checkbox"/>
11	<input type="checkbox"/>	<input checked="" type="checkbox"/>	<input checked="" type="checkbox"/>
12	<input type="checkbox"/>	<input checked="" type="checkbox"/>	<input checked="" type="checkbox"/>
13	<input type="checkbox"/>	<input checked="" type="checkbox"/>	<input checked="" type="checkbox"/>

Activate

The EDS-516A supports inspection of layer 3 TOS and/or layer 2 CoS tag information to determine how to classify traffic packets.

#### Queuing Mechanism

Setting	Description	Factory Default
Weighted Fair	The EDS-516A has 4 priority queues. In the weighted fair scheme, an 8, 4, 2, 1 weighting is applied to the four priorities. This approach prevents the lower priority frames from being starved of opportunity for transmission with only a slight delay to the higher priority frames.	Weight Fair
Strict	In the Strict-priority scheme, all top-priority frames egress a port until that priority's queue is empty, and then the next lower priority queue's frames egress. This approach can cause the lower priorities to be starved of opportunity for transmitting any frames but ensures all high priority frames to egress the switch as soon as possible.	

**Port Highest Priority**

Setting	Description	Factory Default
Enable/Disable	Set the Port Priority of the ingress frames to “High” queues.	Disable

**Inspect TOS**

Setting	Description	Factory Default
Enable/Disable	Select the option to enable the EDS-516A to inspect the Type of Service (TOS) bits in IPV4 frame to determine the priority of each frame.	Enable

**Inspect COS**

Setting	Description	Factory Default
Enable/Disable	Select the option to enable the EDS-516A to inspect the 802.1p COS tag in the MAC frame to determine the priority of each frame.	Enable

NOTE The priority of an ingress frame is determined in order by:

1. Port Highest Priority
2. Inspect TOS
3. Inspect CoS

NOTE The designer can enable these classifications individually or in combination. For instance, if a ‘hot,’ higher priority port is required for a network design, “Inspect TOS” and “Inspect CoS” can be disabled. This setting leaves only port default priority active, which results in all ingress frames being assigned the same priority on that port.

## CoS Mapping

### Mapping Table of CoS Value and Priority Queues

CoS	Priority Queue
0	Low
1	Low
2	Normal
3	Normal
4	Medium
5	Medium
6	High
7	High

Activate

Setting	Description	Factory
Low/Normal/ Medium/High	Set the mapping table of different CoS values to 4 different egress queues.	0: Low 1: Low 2: Normal 3: Normal 4: Medium 5: Medium 6: High 7: High

## TOS/DiffServ Mapping

Mapping Table of ToS (DSCP) Value and Priority Queues

ToS	Level	ToS	Level	ToS	Level	ToS	Level
0x00(1)	Low	0x04(2)	Low	0x08(3)	Low	0x0C(4)	Low
0x10(5)	Low	0x14(6)	Low	0x18(7)	Low	0x1C(8)	Low
0x20(9)	Low	0x24(10)	Low	0x28(11)	Low	0x2C(12)	Low
0x30(13)	Low	0x34(14)	Low	0x38(15)	Low	0x3C(16)	Low
0x40(17)	Normal	0x44(18)	Normal	0x48(19)	Normal	0x4C(20)	Normal
0x50(21)	Normal	0x54(22)	Normal	0x58(23)	Normal	0x5C(24)	Normal
0x60(25)	Normal	0x64(26)	Normal	0x68(27)	Normal	0x6C(28)	Normal
0x70(29)	Normal	0x74(30)	Normal	0x78(31)	Normal	0x7C(32)	Normal
0x80(33)	Medium	0x84(34)	Medium	0x88(35)	Medium	0x8C(36)	Medium
0x90(37)	Medium	0x94(38)	Medium	0x98(39)	Medium	0x9C(40)	Medium
0xA0(41)	Medium	0xA4(42)	Medium	0xA8(43)	Medium	0xAC(44)	Medium
0xB0(45)	Medium	0xB4(46)	Medium	0xB8(47)	Medium	0xBC(48)	Medium

Activate

Setting	Description	Factory Default
Low/Normal/ Medium/High	Set the mapping table of different TOS values to 4 different egress queues.	1 to 16: Low 17 to 32: Normal 33 to 48: Medium 49 to 64: High

## Using Virtual LAN

Setting up Virtual LANs (VLANs) on your EDS-516A increases the efficiency of your network by dividing the LAN into logical segments, as opposed to physical segments. In general, VLANs are easier to manage.

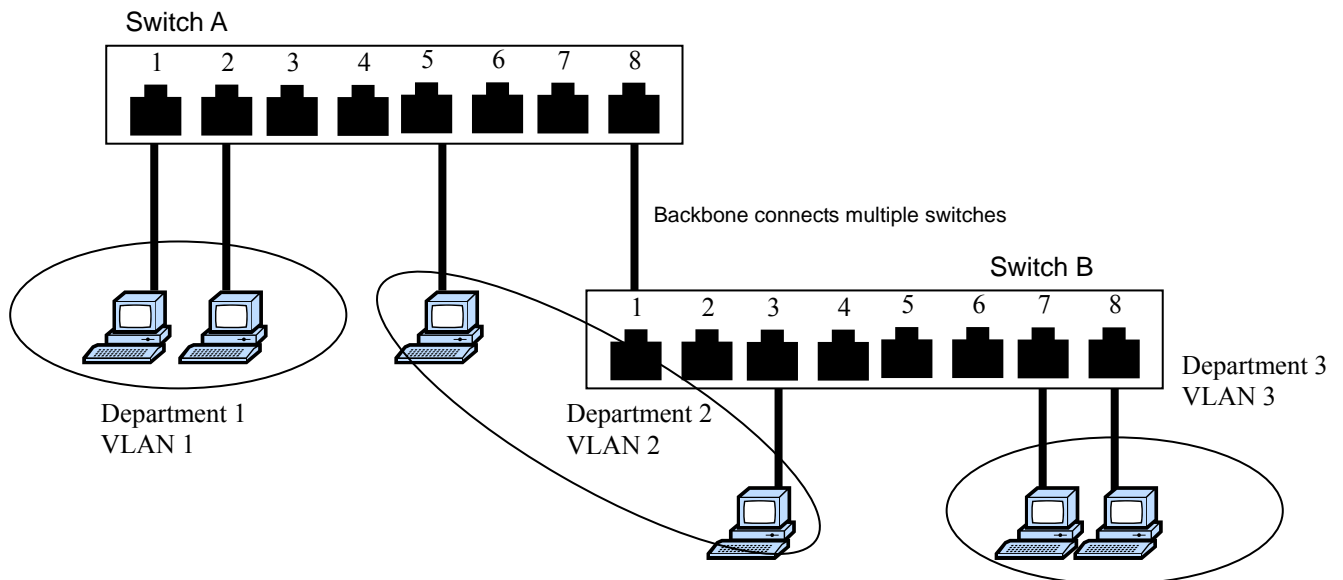
### The Virtual LAN (VLAN) Concept

#### What is a VLAN?

A VLAN is a group of devices that can be located anywhere on a network, but which communicate as if they are on the same physical segment. With VLANs, you can segment your network without being restricted by physical connections—a limitation of traditional network design. As an example, with VLANs you can segment your network according to:

- **Departmental groups**—You could have one VLAN for the Marketing department, another for the Finance department, and another for the Development department.

- **Hierarchical groups**—You could have one VLAN for directors, another for managers, and another for general staff.
- **Usage groups**—You could have one VLAN for e-mail users, and another for multimedia users.



## Benefits of VLANs

The main benefit of VLANs is that they provide a network segmentation system that is far more flexible than traditional networks. Using VLANs also provides you with three other benefits:

- **VLANs ease the relocation of devices on networks:** With traditional networks, network administrators spend most of their time dealing with moves and changes. If users move to a different subnetwork, the addresses of each host must be updated manually. With a VLAN setup, if a host on VLAN *Marketing*, for example, is moved to a port in another part of the network, and retains its original subnet membership, you only need to specify that the new port is on VLAN *Marketing*. You do not need to carry out any re-cabling.
- **VLANs provide extra security:** Devices within each VLAN can only communicate with other devices on the same VLAN. If a device on VLAN *Marketing* needs to communicate with devices on VLAN *Finance*, the traffic must pass through a routing device or Layer 3 switch.
- **VLANs help control traffic:** With traditional networks, congestion can be caused by broadcast traffic that is directed to all network devices, regardless of whether or not they need it. VLANs increase the efficiency of your network because each VLAN can be set up to contain only those devices that need to communicate with each other.

## VLANs and MOXA EtherDevice Switch

Your EDS-516A provides support for VLANs using IEEE Std 802.1Q-1998. This standard allows traffic from multiple VLANs to be carried across one physical link. The IEEE Std 802.1Q-1998 standard allows each port on your EDS-516A to be placed in:

- Any one VLAN defined on the EDS-516A.
- Several VLANs at the same time using 802.1Q tagging.

The standard requires that you define the *802.1Q VLAN ID* for each VLAN on your EDS-516A before the switch can use it to forward traffic:

## Managing a VLAN

A new or initialized EDS-516A contains a single VLAN—the Default VLAN. This VLAN has the following definition:

- *VLAN Name*—Management VLAN
- *802.1Q VLAN ID*—1 (if tagging is required)

All the ports are initially placed on this VLAN, and it is the only VLAN that allows you to access the management software of the EDS-516A over the network.

## Communication Between VLANs

If devices connected to a VLAN need to communicate to devices on a different VLAN, a router or Layer 3 switching device with connections to both VLANs needs to be installed. Communication between VLANs can only take place if they are all connected to a routing or Layer 3 switching device.

## VLANs: Tagged and Untagged Membership

The EDS-516A supports 802.1Q VLAN tagging, a system that allows traffic for multiple VLANs to be carried on a single physical (backbone, trunk) link. When setting up VLANs you need to understand when to use untagged and tagged membership of VLANs. Simply put, if a port is on a single VLAN it can be an untagged member, but if the port needs to be a member of multiple VLANs, tagged membership must be defined.

A typical host (e.g., clients) will be untagged members of one VLAN, defined as “Access Port” in the EDS-516A, while inter-switch connections will be tagged members of all VLANs, defined as “Trunk Port” in the EDS-516A.

The IEEE Std 802.1Q-1998 defines how VLANs operate within an open packet-switched network. An 802.1Q compliant packet carries additional information that allows a switch to determine which VLAN the port belongs. If a frame is carrying the additional information, it is known as a *tagged* frame.

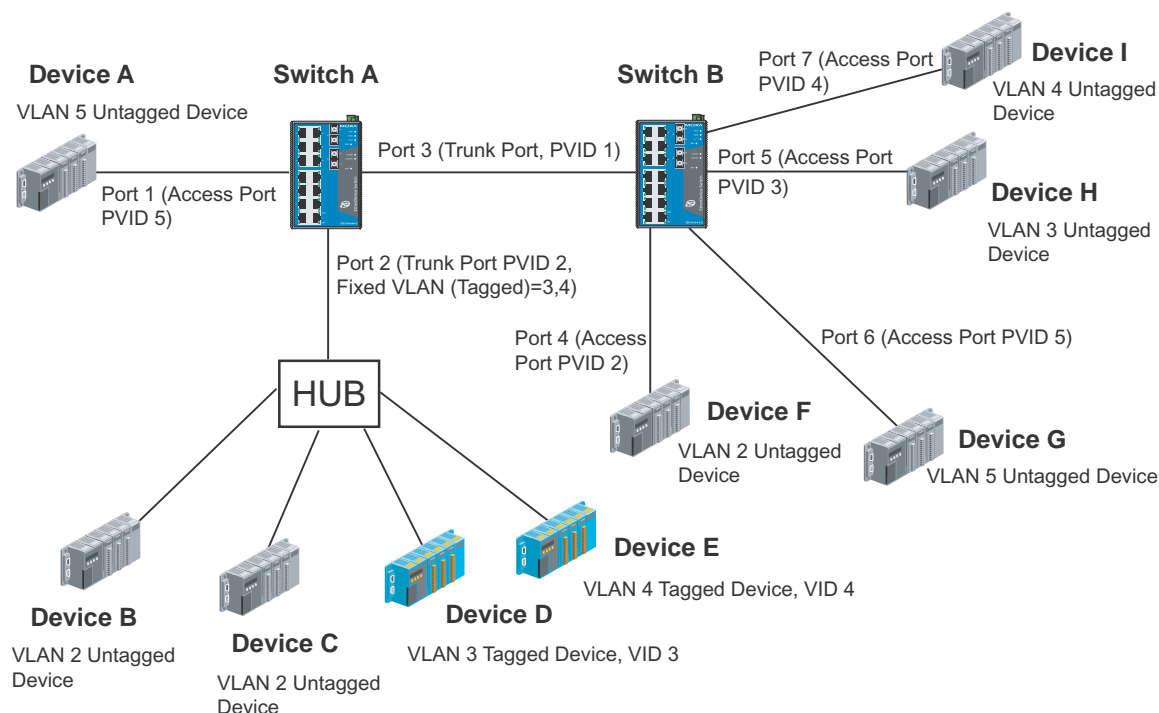
To carry multiple VLANs across a single physical (backbone, trunk) link, each packet must be tagged with a VLAN identifier so that the switches can identify which packets belong to which VLAN. To communicate between VLANs, a router must be used.

The MOXA EDS-516A supports two types of VLAN port settings:

- **Access Port:** The port connects to a single device that is not tagged. The user must define the default port PVID that determines to which VLAN the device belongs. Once the ingress packet of this Access Port egresses to another Trunk Port (the port needs all packets to carry tag information), the EDS-516A will insert this PVID into this packet to help the next 802.1Q VLAN switch recognize it.
- **Trunk Port:** The port connects to a LAN that consists of untagged devices/tagged devices and/or switches and hubs. In general, the traffic of the Trunk Port must have a Tag. Users can also assign PVID to a Trunk Port. The untagged packet on the Trunk Port will be assigned the port default PVID as its VID.

The following section illustrates how to use these ports to set up different applications.

## Sample Applications of VLANs using the EDS-516A



In this application,

- Port 1 connects a single untagged device and assigns it to VLAN 5; it should be configured as “Access Port” with PVID 5.
- Port 2 connects a LAN with two untagged devices belonging to VLAN 2. One tagged device with VID 3 and one tagged device with VID 4. It should be configured as “Trunk Port” with PVID 2 for untagged device and Fixed VLAN (Tagged) with 3 and 4 for tagged device. Since each port can only have one unique PVID, all untagged devices on the same port can only belong to the same VLAN.
- Port 3 connects with another switch. It should be configured as “Trunk Port.” GVRP protocol will be used through the Trunk Port.
- Port 4 connects a single untagged device and assigns it to VLAN 2; it should be configured as “Access Port” with PVID 2.
- Port 5 connects a single untagged device and assigns it to VLAN 3; it should be configured as “Access Port” with PVID 3.
- Port 6 connect a single untagged device and assigns it to VLAN 5; it should be configured as “Access Port” with PVID 5.
- Port 7 connects a single untagged device and assigns it to VLAN 4; it should be configured as “Access Port” with PVID 4.

After proper configuration:

- Packets from device A will travel through “Trunk Port 3” with tagged VID 5. Switch B will recognize its VLAN, pass it to port 6, and then remove tags received successfully by device G, and vice versa.
- Packets from device B and C will travel through “Trunk Port 3” with tagged VID 2. Switch B recognizes its VLAN, passes it to port 4, and then removes tags received successfully by device F, and vice versa.

- Packets from device D will travel through “Trunk Port 3” with tagged VID 3. Switch B will recognize its VLAN, pass to port 5, and then remove tags received successfully by device H. Packets from device H will travel through “Trunk Port 3” with PVID 3. Switch A will recognize its VLAN and pass it to port 2, but will not remove tags received successfully by device D.
- Packets from device E will travel through “Trunk Port 3” with tagged VID 4. Switch B will recognize its VLAN, pass it to port 7, and then remove tags received successfully by device I. Packets from device I will travel through “Trunk Port 3” with tagged VID 4. Switch A will recognize its VLAN and pass it to port 2, but will not remove tags received successfully by device E.

## Configuring Virtual LAN

### VLAN Settings

To configure the EDS-516A's **802.1Q VLAN**, use the VLAN Setting page to configure the ports.

**802.1Q VLAN Settings**

VLAN Mode: 802.1Q VLAN

Management VLAN ID: 1

Port	Type	PVID	Fixed VLAN (Tagged)	Forbidden VLAN
1	Access	1		
2	Access	1		
3	Access	1		
4	Access	1		
5	Access	1		
6	Access	1		
7	Access	1		
8	Access	1		
9	Access	1		
10	Access	1		
11	Access	1		

Activate

#### VLAN Mode

Setting	Description	Factory Default
802.1Q VLAN	Set VLAN mode to 802.1Q VLAN	802.1Q VLAN
Port-based VLAN	Set VLAN mode to Port-based VLAN	

#### Management VLAN ID

Setting	Description	Factory Default
VLAN ID ranges from 1 to 4094	Set the management VLAN of this EDS-516A.	1

**Port Type**

Setting	Description	Factory Default
Access	This port type is used to connect single devices without tags.	Access
Trunk	Select "Trunk" port type to connect another 802.1Q VLAN aware switch or another LAN that combines tagged and/or untagged devices and/or other switches/hubs.	

**ATTENTION**

For communication redundancy in the VLAN environment, set "Redundant Port," "Coupling Port," and "Coupling Control Port" as "Trunk Port," since these ports act as the "backbone" to transmit all packets of different VLANs to different EDS-516A units.

**Port PVID**

Setting	Description	Factory Default
VID range from 1 to 4094	Set the port default VLAN ID for untagged devices that connect to the port.	1

**Fixed VLAN List (Tagged)**

Setting	Description	Factory Default
VID range from 1 to 4094	This field will be active only when selecting the "Trunk" port type. Set the other VLAN ID for tagged devices that connect to the "Trunk" port. Use commas to separate different VIDs.	None

**Forbidden VLAN List**

Setting	Description	Factory Default
VID range from 1 to 4094	This field will be active only when selecting the "Trunk" port type. Set the VLAN IDs that will not be supported by this trunk port. Use commas to separate different VIDs.	None

To configure the EDS-516A's **Port-based VLAN**, use the VLAN Setting page to configure the ports.

**Port-Based VLAN Settings**

VLAN Mode Port-Based VLAN

VLAN	Port	1	2	3	4	5	6	7	8	9	10	11	12	13	14	15	16	G1	G2
1		<input checked="" type="checkbox"/>	<input checked="" type="checkbox"/>	<input checked="" type="checkbox"/>	<input checked="" type="checkbox"/>	<input checked="" type="checkbox"/>	<input checked="" type="checkbox"/>	<input checked="" type="checkbox"/>	<input checked="" type="checkbox"/>	<input checked="" type="checkbox"/>	<input checked="" type="checkbox"/>	<input checked="" type="checkbox"/>	<input checked="" type="checkbox"/>	<input checked="" type="checkbox"/>	<input checked="" type="checkbox"/>	<input checked="" type="checkbox"/>	<input checked="" type="checkbox"/>	<input checked="" type="checkbox"/>	<input checked="" type="checkbox"/>
2		<input type="checkbox"/>	<input type="checkbox"/>	<input type="checkbox"/>	<input type="checkbox"/>	<input type="checkbox"/>	<input type="checkbox"/>	<input type="checkbox"/>	<input type="checkbox"/>	<input type="checkbox"/>	<input type="checkbox"/>	<input type="checkbox"/>	<input type="checkbox"/>	<input type="checkbox"/>	<input type="checkbox"/>	<input type="checkbox"/>	<input type="checkbox"/>	<input type="checkbox"/>	<input type="checkbox"/>
3		<input type="checkbox"/>	<input type="checkbox"/>	<input type="checkbox"/>	<input type="checkbox"/>	<input type="checkbox"/>	<input type="checkbox"/>	<input type="checkbox"/>	<input type="checkbox"/>	<input type="checkbox"/>	<input type="checkbox"/>	<input type="checkbox"/>	<input type="checkbox"/>	<input type="checkbox"/>	<input type="checkbox"/>	<input type="checkbox"/>	<input type="checkbox"/>	<input type="checkbox"/>	<input type="checkbox"/>
4		<input type="checkbox"/>	<input type="checkbox"/>	<input type="checkbox"/>	<input type="checkbox"/>	<input type="checkbox"/>	<input type="checkbox"/>	<input type="checkbox"/>	<input type="checkbox"/>	<input type="checkbox"/>	<input type="checkbox"/>	<input type="checkbox"/>	<input type="checkbox"/>	<input type="checkbox"/>	<input type="checkbox"/>	<input type="checkbox"/>	<input type="checkbox"/>	<input type="checkbox"/>	<input type="checkbox"/>
5		<input type="checkbox"/>	<input type="checkbox"/>	<input type="checkbox"/>	<input type="checkbox"/>	<input type="checkbox"/>	<input type="checkbox"/>	<input type="checkbox"/>	<input type="checkbox"/>	<input type="checkbox"/>	<input type="checkbox"/>	<input type="checkbox"/>	<input type="checkbox"/>	<input type="checkbox"/>	<input type="checkbox"/>	<input type="checkbox"/>	<input type="checkbox"/>	<input type="checkbox"/>	<input type="checkbox"/>
6		<input type="checkbox"/>	<input type="checkbox"/>	<input type="checkbox"/>	<input type="checkbox"/>	<input type="checkbox"/>	<input type="checkbox"/>	<input type="checkbox"/>	<input type="checkbox"/>	<input type="checkbox"/>	<input type="checkbox"/>	<input type="checkbox"/>	<input type="checkbox"/>	<input type="checkbox"/>	<input type="checkbox"/>	<input type="checkbox"/>	<input type="checkbox"/>	<input type="checkbox"/>	<input type="checkbox"/>
7		<input type="checkbox"/>	<input type="checkbox"/>	<input type="checkbox"/>	<input type="checkbox"/>	<input type="checkbox"/>	<input type="checkbox"/>	<input type="checkbox"/>	<input type="checkbox"/>	<input type="checkbox"/>	<input type="checkbox"/>	<input type="checkbox"/>	<input type="checkbox"/>	<input type="checkbox"/>	<input type="checkbox"/>	<input type="checkbox"/>	<input type="checkbox"/>	<input type="checkbox"/>	<input type="checkbox"/>
8		<input type="checkbox"/>	<input type="checkbox"/>	<input type="checkbox"/>	<input type="checkbox"/>	<input type="checkbox"/>	<input type="checkbox"/>	<input type="checkbox"/>	<input type="checkbox"/>	<input type="checkbox"/>	<input type="checkbox"/>	<input type="checkbox"/>	<input type="checkbox"/>	<input type="checkbox"/>	<input type="checkbox"/>	<input type="checkbox"/>	<input type="checkbox"/>	<input type="checkbox"/>	<input type="checkbox"/>
9		<input type="checkbox"/>	<input type="checkbox"/>	<input type="checkbox"/>	<input type="checkbox"/>	<input type="checkbox"/>	<input type="checkbox"/>	<input type="checkbox"/>	<input type="checkbox"/>	<input type="checkbox"/>	<input type="checkbox"/>	<input type="checkbox"/>	<input type="checkbox"/>	<input type="checkbox"/>	<input type="checkbox"/>	<input type="checkbox"/>	<input type="checkbox"/>	<input type="checkbox"/>	<input type="checkbox"/>
10		<input type="checkbox"/>	<input type="checkbox"/>	<input type="checkbox"/>	<input type="checkbox"/>	<input type="checkbox"/>	<input type="checkbox"/>	<input type="checkbox"/>	<input type="checkbox"/>	<input type="checkbox"/>	<input type="checkbox"/>	<input type="checkbox"/>	<input type="checkbox"/>	<input type="checkbox"/>	<input type="checkbox"/>	<input type="checkbox"/>	<input type="checkbox"/>	<input type="checkbox"/>	<input type="checkbox"/>
11		<input type="checkbox"/>	<input type="checkbox"/>	<input type="checkbox"/>	<input type="checkbox"/>	<input type="checkbox"/>	<input type="checkbox"/>	<input type="checkbox"/>	<input type="checkbox"/>	<input type="checkbox"/>	<input type="checkbox"/>	<input type="checkbox"/>	<input type="checkbox"/>	<input type="checkbox"/>	<input type="checkbox"/>	<input type="checkbox"/>	<input type="checkbox"/>	<input type="checkbox"/>	<input type="checkbox"/>
12		<input type="checkbox"/>	<input type="checkbox"/>	<input type="checkbox"/>	<input type="checkbox"/>	<input type="checkbox"/>	<input type="checkbox"/>	<input type="checkbox"/>	<input type="checkbox"/>	<input type="checkbox"/>	<input type="checkbox"/>	<input type="checkbox"/>	<input type="checkbox"/>	<input type="checkbox"/>	<input type="checkbox"/>	<input type="checkbox"/>	<input type="checkbox"/>	<input type="checkbox"/>	<input type="checkbox"/>
13		<input type="checkbox"/>	<input type="checkbox"/>	<input type="checkbox"/>	<input type="checkbox"/>	<input type="checkbox"/>	<input type="checkbox"/>	<input type="checkbox"/>	<input type="checkbox"/>	<input type="checkbox"/>	<input type="checkbox"/>	<input type="checkbox"/>	<input type="checkbox"/>	<input type="checkbox"/>	<input type="checkbox"/>	<input type="checkbox"/>	<input type="checkbox"/>	<input type="checkbox"/>	<input type="checkbox"/>

**Activate**

#### VLAN Mode

Setting	Description	Factory Default
802.1Q VLAN	Set VLAN mode to 802.1Q VLAN	802.1Q VLAN
Port-based VLAN	Set VLAN mode to Port-based VLAN	

#### Port

Setting	Description	Factory Default
Enable/Disable	Set port to specific VLAN Group.	Enable (all ports belong to VLAN1)

### VLAN Table

**VLAN Table**

**VLAN Mode**  
VLAN Mode 802.1Q VLAN

**Management VLAN**  
Management VLAN 1

**Current 802.1Q VLAN List**

Index	VLAN	Joined Access Port	Joined Trunk Port
1	1	1, 2, 3, 4, 5, 6, 7, 8, 9, 10, 11, 12, 13, 14, 15, 16,	

**VLAN Mode**  
VLAN Mode Port-based VLAN

**Current Port-based VLAN List**

Index	VLAN	Joined Port
1	1	1, 2, 3, 4, 5, 6, 7, 8, 9, 10, 11, 12, 13, 14, 15, 16,

In 802.1Q VLAN table, you can review the VLAN groups that were created, Joined Access Ports, and Trunk Ports, and in Port-based VLAN table, you can review the VLAN group and Joined port.

NOTE The physical network can have a maximum of 64 VLAN settings.

## Using Multicast Filtering

Multicast filtering improves the performance of networks that carry multicast traffic. This section explains multicasts, multicast filtering, and how multicast filtering can be implemented on your EDS-516A.

### The Concept of Multicast Filtering

#### What is an IP Multicast?

A *multicast* is a packet sent by one host to multiple hosts. Only those hosts that belong to a specific multicast group will receive the multicast. If the network is set up correctly, a multicast can only be sent to an end-station or a subset of end-stations on a LAN or VLAN that belong to the multicast group. Multicast group members can be distributed across multiple subnets, so that multicast transmissions can occur within a campus LAN or over a WAN. In addition, networks that support IP multicast send only *one* copy of the desired information across the network until the delivery path that reaches group members diverges. To make more efficient use of network bandwidth, it is only at these points that multicast packets are duplicated and forwarded. A multicast packet has a multicast group address in the destination address field of the packet's IP header.

#### Benefits of Multicast

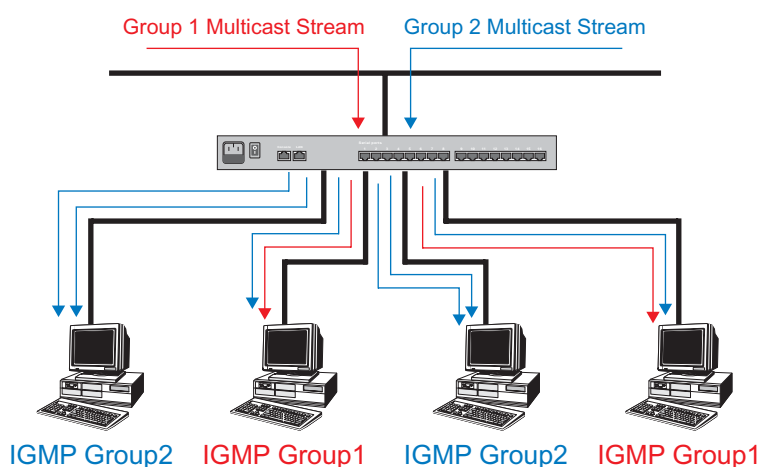
The benefits of using IP multicast are that it:

- Uses the most efficient, sensible method to deliver the same information to many receivers with only one transmission.
- Reduces the load on the source (for example, a server) since it will not need to produce several copies of the same data.
- Makes efficient use of network bandwidth and scales well as the number of multicast group members increases.
- Works with other IP protocols and services, such as Quality of Service (QoS).

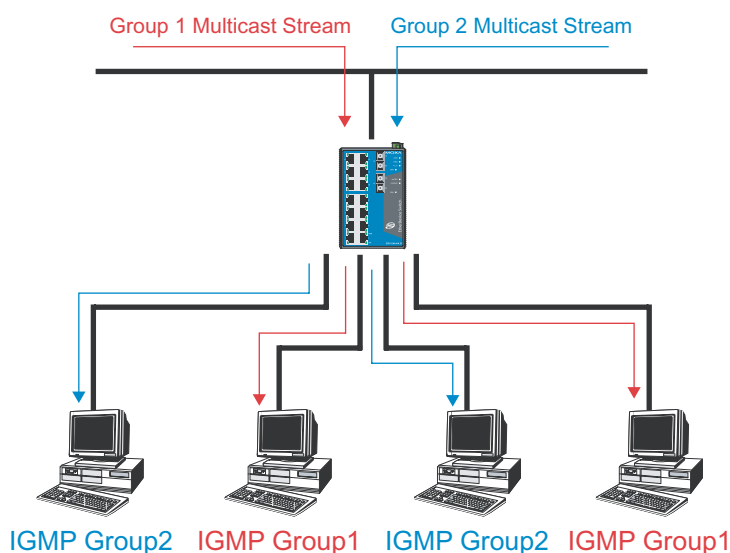
Multicast transmission makes more sense and is more efficient than unicast transmission for some applications. For example, multicasts are often used for video-conferencing, since high volumes of traffic must be sent to several end-stations at the same time, but where broadcasting the traffic to all end-stations would cause a substantial reduction in network performance. Furthermore, several industrial automation protocols, such as Allen-Bradley, EtherNet/IP, Siemens Profibus, and Foundation Fieldbus HSE (High Speed Ethernet), use multicast. These industrial Ethernet protocols use publisher/subscriber communications models by multicasting packets that could flood a network with heavy traffic. IGMP Snooping is used to prune multicast traffic so that it travels only to those end destinations that require the traffic, reducing the amount of traffic on the Ethernet LAN.

#### Multicast Filtering

Multicast filtering ensures that only end-stations that have joined certain groups receive multicast traffic. With multicast filtering, network devices only forward multicast traffic to the ports that are connected to registered end-stations. The following two figures illustrate how a network behaves without multicast filtering, and with multicast filtering.

**Network without multicast filtering**

All hosts receive the multicast traffic, even if they don't need it.

**Network with multicast filtering**

Hosts only receive dedicated traffic from other hosts belonging to the same group.

**Multicast Filtering and MOXA EtherDevice Switch**

The EDS-516A has three ways to achieve multicast filtering: IGMP (Internet Group Management Protocol) Snooping, GMRP (GARP Multicast Registration Protocol), and adding a static multicast MAC manually to filter multicast traffic automatically.

**IGMP (Internet Group Management Protocol)****Snooping Mode**

Snooping Mode allows your switch to forward multicast packets only to the appropriate ports. The switch “snoops” on exchanges between hosts and an IGMP device, such as a router, to find those ports that want to join a multicast group, and then configures its filters accordingly.

### Query Mode

Query mode allows the EDS-516A to work as the Querier if it has the lowest IP address on the subnetwork to which it belongs. IGMP querying is enabled by default on the EDS-516A to help prevent interoperability issues with some multicast routers that may not follow the lowest IP address election method. Enable query mode to run multicast sessions on a network that does not contain IGMP routers (or queriers).

NOTE	The EDS-516A is compatible with any device that conforms to the IGMP v2 and IGMP v3 device protocol.
------	--

## IGMP Multicast Filtering

IGMP is used by IP-supporting network devices to register hosts with multicast groups. It can be used on all LANs and VLANs that contain a multicast capable IP router, and on other network devices that support multicast filtering. IGMP works as follows:

1. The IP router (or querier) periodically sends *query* packets to all end-stations on the LANs or VLANs that are connected to it. For networks with more than one IP router, the router with the lowest IP address is the querier. A switch with IP address lower than the IP address of any other IGMP queriers connected to the LAN or VLAN can become the IGMP querier.
2. When an IP host receives a query packet, it sends a *report* packet back that identifies the multicast group that the end-station would like to join.
3. When the report packet arrives at a port on a switch with *IGMP Snooping* enabled, the switch knows that the port should forward traffic for the multicast group, and then proceeds to forward the packet to the router.
4. When the router receives the report packet, it registers that the LAN or VLAN requires traffic for the multicast groups.
5. When the router forwards traffic for the multicast group to the LAN or VLAN, the switches only forward the traffic to ports that received a report packet.

## GMRP (GARP Multicast Registration Protocol)

The EDS-516A supports IEEE 802.1D-1998 GMRP (GARP Multicast Registration Protocol), which differs from IGMP (Internet Group Management Protocol). GMRP is a MAC-based multicast management protocol, whereas IGMP is IP-based. GMRP provides a mechanism that allows bridges and end stations to register or de-register Group membership information dynamically. GMRP functions similarly to GVRP, except that GMRP registers multicast addresses on ports. When a port receives a **GMRP-join** message, it will register the multicast address to its database if the multicast address is not registered, and all the multicast packets with that multicast address are able to be forwarded from this port. When a port receives a **GMRP-leave** message, it will de-register the multicast address from its database, and all the multicast packets with this multicast address are not able to be forwarded from this port.

## Static Multicast MAC

Some devices may only support multicast packets, but not support either IGMP Snooping or GMRP. The EDS-516A supports adding multicast groups manually to enable multicast filtering.

## Enabling Multicast Filtering

Use the serial console or Web interface to enable or disable IGMP Snooping and IGMP querying. If IGMP Snooping is not enabled, then IP multicast traffic is always forwarded, flooding the network.

## Configuring IGMP Snooping

IGMP Snooping provides the ability to prune multicast traffic so that it travels only to those end destinations that require that traffic, thereby reducing the amount of traffic on the Ethernet LAN.

### IGMP Snooping Settings

**IGMP Snooping Setting**

Current VLAN List

IGMP Snooping Enable ☐ Query Interval  (s)

Index	VID	IGMP Snooping	Querier	Static Multicast Querier Port
1	1	<input checked="" type="checkbox"/> Enable	<input checked="" type="checkbox"/> Enable	<input type="checkbox"/> 1 <input type="checkbox"/> 2 <input type="checkbox"/> 3 <input type="checkbox"/> 4 <input type="checkbox"/> 5 <input type="checkbox"/> 6 <input type="checkbox"/> 7 <input type="checkbox"/> 8 <input type="checkbox"/> 9 <input type="checkbox"/> 10 <input type="checkbox"/> 11 <input type="checkbox"/> 12 <input type="checkbox"/> 13 <input type="checkbox"/> 14 <input type="checkbox"/> 15 <input type="checkbox"/> 16

**Activate**

#### *IGMP Snooping Enable*

Setting	Description	Factory Default
Enable/Disable	Select the option to enable the IGMP Snooping function globally.	Disabled

#### *Query Interval*

Setting	Description	Factory Default
Numerical value input by user	Set the query interval of the Querier function globally. Valid settings are from 20 to 600 seconds.	125 seconds

#### *IGMP Snooping*

Setting	Description	Factory Default
Enable/Disable	Select the option to enable the IGMP Snooping function per VLAN.	Enabled if IGMP Snooping Enabled Globally

#### *Querier*

Setting	Description	Factory Default
Enable/Disable	Select the option to enable the EDS-516A's querier function.	Enabled if IGMP Snooping is Enabled Globally

**Static Multicast Router Port**

Setting	Description	Factory Default
Select/Deselect	Select the option to select which ports will connect to the multicast routers. It's active only when IGMP Snooping is enabled.	Disabled

**NOTE** At least one switch must be designated the Querier or enable IGMP snooping and GMRP when enabling Turbo Ring and IGMP snooping simultaneously.

**IGMP Table**

The EDS-516A displays the current active IGMP groups that were detected.

**Current Active IGMP Groups**

VID	Auto Learned Multicast Router Port	Static Multicast Router Port	Querier Connected Port	Act as Querier	Active IGMP Groups		
					IP	MAC	Members Port
1		1,2		Yes	239.255.255.250	01-00-5E-7F-FF-FA	4

The information includes **VID**, **Auto-learned Multicast Router Port**, **Static Multicast Router Port**, **Querier Connected Port**, and the **IP** and **MAC** addresses of active IGMP groups.

**Static Multicast MAC**

If required, the EDS-516A also supports adding multicast groups manually.

**Static Multicast MAC Address****Current Static Multicast MAC Address List**

<input type="checkbox"/> All	<input type="checkbox"/> Index	<input type="checkbox"/> MAC Address	<input type="checkbox"/> Join Port
------------------------------	--------------------------------	--------------------------------------	------------------------------------

Remove Select

**Add New Static Multicast MAC Address to the List**MAC Address  -  -  -  -  - Join Port ☐ 1 ☐ 2 ☐ 3 ☐ 4 ☐ 5 ☐ 6 ☐ 7 ☐ 8 ☐ 9 ☐ 10 ☐ 11 ☐ 12 ☐ 13 ☐ 14 ☐ 15 ☐ 16

Activate

**Add New Static Multicast Address to the List**

Setting	Description	Factory Default
MAC Address	Input the multicast MAC address of this host.	None

**MAC Address**

Setting	Description	Factory Default
integer	Input the number of the VLAN to which the host with this MAC Address belongs.	None

**Join Port**

Setting	Description	Factory Default
Select/Deselect	Select the appropriate options to select the join ports for this multicast group.	None

## Configuring GMRP

GMRP is a MAC-based multicast management protocol, whereas IGMP is IP-based. GMRP provides a mechanism that allows bridges and end stations to register or un-register Group membership information dynamically.

Port	GMRP
1	<input type="checkbox"/> Enable
2	<input type="checkbox"/> Enable
3	<input type="checkbox"/> Enable
4	<input type="checkbox"/> Enable
5	<input type="checkbox"/> Enable
6	<input type="checkbox"/> Enable
7	<input type="checkbox"/> Enable
8	<input type="checkbox"/> Enable
9	<input type="checkbox"/> Enable
10	<input type="checkbox"/> Enable
11	<input type="checkbox"/> Enable
12	<input type="checkbox"/> Enable

Activate

**GMRP enable**

Setting	Description	Factory Default
Enable/Disable	Select the option to enable the GMRP function for the port listed in the Port column	Disable

## GMRP Table

The EDS-516A displays the current active GMRP groups that were detected.

	Multicast Address	Fixed Ports	Learned Ports
1	01-00-5E-00-00-01	1,2,	

Setting	Description
Fixed Ports	This multicast address is defined by static multicast.
Learned Ports	This multicast address is learned by GMRP.

## Using Bandwidth Management

In general, one host should not be allowed to occupy unlimited bandwidth, particularly when the device malfunctions. For example, so-called “broadcast storms” could be caused by an incorrectly configured topology, or a malfunctioning device. The EDS-516A not only prevents broadcast storms, but can also be configured to a different ingress rate for all packets, giving administrators full control of their limited bandwidth to prevent undesirable effects caused by unpredictable faults.

### Configuring Bandwidth Management

#### Broadcast Storm Protection

##### Broadcast Storm Protection

- ☒ Broadcast Storm Protection
- ☐ Include Multicast Packet
- ☒ Include Unknown Multicast and Unknown Unicast Packet

Activate

Setting	Description	Factory Default
Enable/Disable	Enable or disable the Broadcast Storm Protection for multicast packet globally.	Enable (for unknown multicast and unknown unicast packet)
	Enable or disable the Broadcast Storm Protection for unknown multicast and unknown unicast packets globally.	

#### Traffic Rate Limiting Settings

##### Traffic Rate Limiting Settings

Port	Ingress	Egress
1	Not Limited	Not Limited
2	Not Limited	Not Limited
3	Not Limited	Not Limited
4	Not Limited	Not Limited
5	Not Limited	Not Limited
6	Not Limited	Not Limited
7	Not Limited	Not Limited
8	Not Limited	Not Limited
9	Not Limited	Not Limited
10	Not Limited	Not Limited
11	Not Limited	Not Limited
12	Not Limited	Not Limited

Activate

*Ingress*

Setting	Description	Factory Default
Ingress rate	Select the ingress rate for all packets from the following options: Not Limited, 128K, 256K, 512K, 1M, 2M, 4M, 8M	N/A

## Using Port Access Control

The EDS-516A provides two kinds of Port-Based Access Controls. One is Static Port Lock and the other is IEEE 802.1X.

### Static Port Lock

The EDS-516A can also be configured to protect static MAC addresses for a specific port. With the Port Lock function, these locked ports will not learn any additional addresses, but only allow traffic from preset static MAC addresses, helping to block crackers and careless usage.

### IEEE 802.1X

The IEEE 802.1X standard defines a protocol for client/server-based access control and authentication. The protocol restricts unauthorized clients from connecting to a LAN through ports that are open to the Internet, and which otherwise would be readily accessible. The purpose of the authentication server is to check each client that requests access to the port. The client is only allowed access to the port if the client's permission is authenticated.

### The IEEE 802.1X Concept

Three components are used to create an authentication mechanism based on 802.1X standards: Client/Supplicant, Authentication Server, and Authenticator.

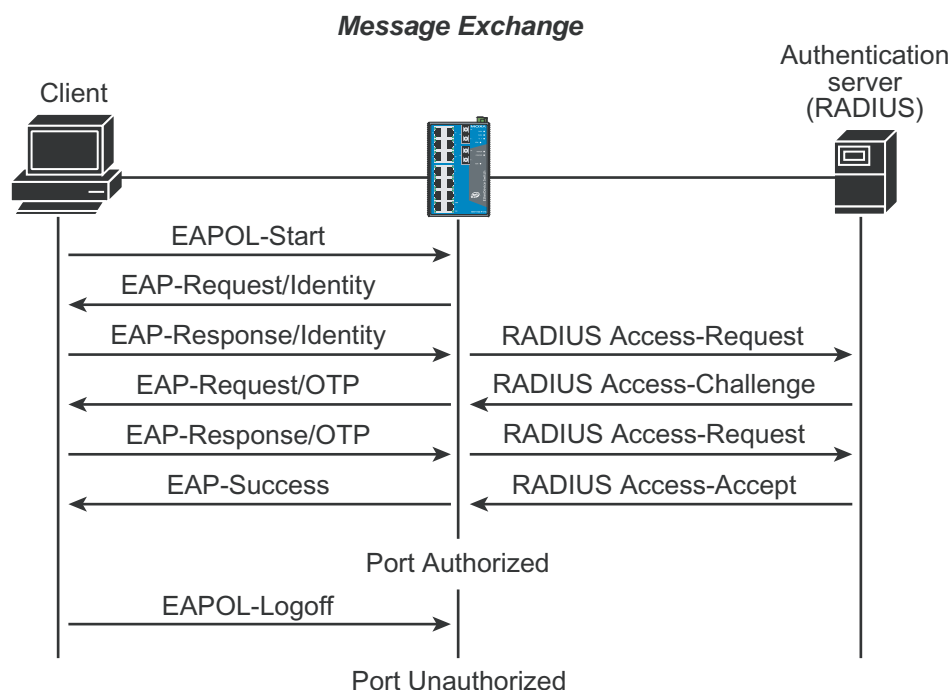
**Supplicant:** The end station that requests access to the LAN and switch services and responds to the requests from the switch.

**Authentication server:** The server that performs the actual authentication of the supplicant.

**Authenticator:** Edge switch or wireless access point that acts as a proxy between the supplicant and the authentication server, requesting identity information from the supplicant, verifying the information with the authentication server, and relaying a response to the supplicant.

The EDS-516A acts as an authenticator in the 802.1X environment. A supplicant and an authenticator exchange EAPOL (Extensible Authentication Protocol over LAN) frames with each other. We can either use an external RADIUS server as the authentication server, or implement the authentication server in the EDS-516A by using a Local User Database as the authentication look-up table. When we use an external RADIUS server as the authentication server, the authenticator and the authentication server exchange EAP frames between each other.

Authentication can be initiated either by the supplicant or the authenticator. When the supplicant initiates the authentication process, it sends an "EAPOL-Start" frame to the authenticator. When the authenticator initiates the authentication process or when it receives an "EAPOL Start" frame, it sends an "EAP Request/Identity" frame to ask for the username of the supplicant. The following actions are described below:



1. When the supplicant receives an "EAP Request/Identity" frame, it sends an "EAP Response/Identity" frame with its username back to the authenticator.
2. If the RADIUS server is used as the authentication server, the authenticator relays the "EAP Response/Identity" frame from the supplicant by encapsulating it into a "RADIUS Access-Request" frame and sends to the RADIUS server. When the authentication server receives the frame, it looks up its database to check if the username exists. If the username is not present, the authentication server replies with a "RADIUS Access-Reject" frame to the authenticator if the server is a RADIUS server or just indicates failure to the authenticator if the Local User Database is used. The authenticator sends an "EAP-Failure" frame to the supplicant.
3. The RADIUS server sends a "RADIUS Access-Challenge," which contains an "EAP Request" with an authentication type to the authenticator to ask for the password from the client. RFC 2284 defines several EAP authentication types, such as "MD5-Challenge," "One-Time Password," and "Generic Token Card." Currently, only "MD5-Challenge" is supported. If the Local User Database is used, this step is skipped.
4. The authenticator sends an "EAP Request/MD5-Challenge" frame to the supplicant. If the RADIUS server is used, the "EAP Request/MD5-Challenge" frame is retrieved directly from the "RADIUS Access-Challenge" frame.
5. The supplicant responds to the "EAP Request/MD5-Challenge" by sending an "EAP Response/MD5-Challenge" frame that encapsulates the user's password using the MD5 hash algorithm.
6. If the RADIUS server is used as the authentication server, the authenticator relays the "EAP Response/MD5-Challenge" frame from the supplicant by encapsulating it into a "RADIUS Access-Request" frame along with a "Shared Secret," which must be the same within the authenticator and the RADIUS server, and sends the frame to the RADIUS server. The RADIUS server checks against the password with its database, and replies with "RADIUS Access-Accept" or "RADIUS Access-Reject" to the authenticator. If the Local User Database is used, the password is checked against its database and indicates success or failure to the authenticator.

- The authenticator sends "EAP Success" or "EAP Failure" based on the reply from the authentication server.

## Configuring Static Port Lock

The EDS-516A supports adding unicast groups manually if required.

**Add Static Unicast MAC Address**

MAC Address  -  -  -  -  -

Port

**Activate**

Setting	Description	Factory Default
MAC Address	Add the static unicast MAC address into the address table.	None
Port	Fix the static address with a dedicated port.	1

## Configuring IEEE 802.1X

**802.1X Settings**

Database Option  Re-Auth

Radius Server  Re-Auth Period

Server Port

Shared Key

Port	802.1X
1	<input type="checkbox"/> Enable
2	<input type="checkbox"/> Enable
3	<input type="checkbox"/> Enable
4	<input type="checkbox"/> Enable
5	<input type="checkbox"/> Enable
6	<input type="checkbox"/> Enable
7	<input type="checkbox"/> Enable
8	<input type="checkbox"/> Enable

**Activate**

### Database Option

Setting	Description	Factory Default
Local (Max. 32 users)	Select this option when setting the Local User Database as the authentication database.	Local
Radius	Select this option to set an external RADIUS server as the authentication database. The authentication mechanism is "EAP-MD5."	Local
Radius, Local	Select this option to make an external RADIUS server as the authentication database with first priority. The authentication mechanism is "EAP-MD5." The first priority is to set the Local User Database as the authentication database.	Local

**Radius Server**

Setting	Description	Factory Default
IP address or domain name	The IP address or domain name of the RADIUS server	localhost

**Server Port**

Setting	Description	Factory Default
Numerical	The UDP port of the RADIUS Server	1812

**Shared Key**

Setting	Description	Factory Default
alphanumeric (Max. 40 characters)	A key to be shared between the external RADIUS server and The EDS-516A. Both ends must be configured to use the same key.	None

**Re-Auth**

Setting	Description	Factory Default
Enable/Disable	Select to require re-authentication of the client after a preset time period of no activity has elapsed.	Disable

**Re-Auth Period**

Setting	Description	Factory Default
Numerical (60-65535 sec.)	Specify how frequently the end stations need to reenter usernames and passwords in order to stay connected.	3600

**802.1X**

Setting	Description	Factory Default
Enable/Disable	Select the option under the 802.1X column to enable IEEE 802.1X for one or more ports. All end stations must enter usernames and passwords before access to these ports is allowed.	Disable

**802.1X Re-Authentication**

The EDS-516A can force connected devices to be re-authorized manually.

**802.1X Re-Authentication**

Port	802.1X
1	<input type="checkbox"/> Re-Authenticate
2	<input type="checkbox"/> Re-Authenticate

Activate

**802.1X Re-Authentication**

Setting	Description	Factory Default
Enable/Disable	Select the option to enable 802.1X Re-Authentication	Disable

**Local User Database Setup**

When setting the Local User Database as the authentication database, set the database first.

**Local User Database Setup**

Setting	Description	Factory Default
User Name (Max. 30 characters)	User Name for Local User Database	<i>None</i>
Password (Max. 16 characters)	Password for Local User Database	<i>None</i>
Description (Max. 30 characters)	Description for Local User Database	<i>None</i>

**NOTE** The user name for the Local User Database is case-insensitive.

**Port Access Control Table**

The port status will indicate whether the access is authorized or unauthorized.

## Using Auto Warning

Since industrial Ethernet devices are often located at the endpoints of a system, these devices will not always know what is happening elsewhere on the network. This means that an industrial Ethernet switch that connects to these devices must provide system maintainers with real-time alarm messages. Even when control engineers are out of the control room for an extended period of time, they can still be informed of the status of devices almost instantaneously when exceptions occur. The EDS-516A supports different approaches to warn engineers automatically, such as by using email and relay output. It also supports two digital inputs to integrate sensors into your system to automate alarms using email and relay output.

## Configuring Email Warning

The Auto Email Warning function uses e-mail to alert the user when certain user-configured events take place.

Three basic steps are required to set up the Auto Warning function:

1. **Configuring Email Event Types**  
Select the desired **Event types** from the Console or Web Browser Event type page (a description of each event type is given later in the *Email Alarm Events setting* subsection).
2. **Configuring Email Settings**  
To configure the EDS-516A's email setup from the Console interface or browser interface, enter your Mail Server IP/Name (IP address or name), Account Name, Account Password, Retype New Password, and the email address to which warning messages will be sent.
3. **Activate your settings and if necessary, test the email**  
After configuring and activating your EDS-516A's Event Types and Email Setup, you can use the **Test Email** function to see if your e-mail addresses and mail server address have been properly configured.

## Event Type

**Email Warning Events Settings**

**System Events**

☐ Switch Cold Start    ☐ Switch Warm Start    ☐ Power Transition(On->Off)    ☐ Power Transition(Off->On)  
☐ DI 1 (Off)    ☐ DI 1 (On)    ☐ DI 2 (Off)    ☐ DI 2 (On)  
☐ Config. Change    ☐ Auth. Failure    ☐ Comm. Redundancy Topology Changed

**Port Events**

Port	Link-ON	Link-OFF	Traffic-Overload	Traffic-Threshold(%)	Traffic-Duration(s)
1	<input type="checkbox"/>	<input type="checkbox"/>	<input type="checkbox"/>	0	1
2	<input type="checkbox"/>	<input type="checkbox"/>	<input type="checkbox"/>	0	1
3	<input type="checkbox"/>	<input type="checkbox"/>	<input type="checkbox"/>	0	1
4	<input type="checkbox"/>	<input type="checkbox"/>	<input type="checkbox"/>	0	1
5	<input type="checkbox"/>	<input type="checkbox"/>	<input type="checkbox"/>	0	1
6	<input type="checkbox"/>	<input type="checkbox"/>	<input type="checkbox"/>	0	1
7	<input type="checkbox"/>	<input type="checkbox"/>	<input type="checkbox"/>	0	1
8	<input type="checkbox"/>	<input type="checkbox"/>	<input type="checkbox"/>	0	1

**Activate**

Event Types can be divided into two basic groups: **System Events** and **Port Events**. System Events are related to the overall function of the switch, whereas Port Events are related to the activity of a specific port.

System Events	Warning e-mail is sent when...
Switch Cold Start	Power is cut off and then reconnected.
Switch Warm Start	The EDS-516A is rebooted, such as when network parameters are changed (IP address, subnet mask, etc.).
Power Transition (On→Off)	The EDS-516A is powered down.
Power Transition (Off→On)	The EDS-516A is powered up.
DI1 (On→Off)	Digital Input 1 is triggered by on to off transition
DI1 (Off→On)	Digital Input 1 is triggered by off to on transition
DI2 (On→Off)	Digital Input 2 is triggered by on to off transition
DI2 (Off→On)	Digital Input 2 is triggered by off to on transition
Configuration Change Activated	A configuration item has been changed.
Authentication Failure	An incorrect password is entered.
Comm. Redundancy Topology Changed	Spanning Tree Protocol switches have changed their position (applies only to the root of the tree). The Master of the Turbo Ring has changed or the backup path is activated.

Port Events	Warning e-mail is sent when...
Link-ON	The port is connected to another device.
Link-OFF	The port is disconnected (e.g., the cable is pulled out, or the opposing device shuts down).
Traffic-Overload	The port's traffic surpasses the Traffic-Threshold for that port (provided this item is Enabled).
Traffic-Threshold (%)	Enter a non-zero number if the port's Traffic-Overload item is Enabled.
Traffic-Duration (sec.)	A Traffic-Overload warning is sent every <i>Traffic-Duration</i> seconds if the average Traffic-Threshold is surpassed during that time period.

**NOTE** The **Traffic-Overload**, **Traffic-Threshold (%)**, and **Traffic-Duration (sec.)** Port Event items are related. If you Enable the Traffic-Overload event, then be sure to enter a non-zero Traffic-Threshold percentage, as well as a Traffic-Duration between 1 and 300 seconds.

**NOTE** Warning e-mail messages will have the **sender** field formatted in the form:  
**MOXA\_EtherDevice\_Switch\_0001@Switch\_Location**  
 where **MOXA\_EtherDevice\_Switch** is the default Switch Name, **0001** is the EDS-516A's serial number, and **Switch\_Location** is the default Server Location.  
 Refer to the Basic **Settings** section to see how to modify Switch Name and Switch Location.

## Email Setup

**Email Alarm Events Settings**

Mail Server IP/Name:

Account Name :

Account Password :

☐ Change Account Password

Old Password :

New Password :

Retype Password :

1st email address :

2nd email address :

3rd email address :

4th email address :

### Mail Server IP/Name

Setting	Description	Factory Default
IP address	The IP Address of your email server.	None

### Account Name

Setting	Description	Factory Default
Max. 45 Characters	Your email account name (typically your user name)	None

### Password Setting

Setting	Description	Factory Default
Disable/Enable to change Password	To reset the Password from the Web Browser interface, click the Change password check-box, type the Old Password, type the New Password, retype the New password, and then click Activate; Max. 45 Characters.	Disable
Old Password	Type the current password when changing the password	None
New Password	Type new password when enabled to change password; Max. 45 Characters.	None
Retype Password	If you type a new password in the Password field, you will be required to retype the password in the Retype new password field before updating the new password.	None

### Email Address

Setting	Description	Factory Default
Max. 30 characters	You can set up to 4 email addresses to receive alarm emails from the EDS-516A.	None

### Send Test Email

After configuring the email settings, you should first click **Activate** to activate those settings, and then click **Send Test Email** to verify that the settings are correct.

**NOTE** Auto warning e-mail messages will be sent through an authentication protected SMTP server that supports the CRAM-MD5, LOGIN, and PLAIN methods of SASL (Simple Authentication and Security Layer) authentication mechanism.

We strongly recommend not entering your Account Name and Account Password if auto warning e-mail messages can be delivered without using an authentication mechanism.

## Configuring Relay Warning

The Auto Relay Warning function uses relay output to alert the user when certain user-configured events take place. There are two basic steps required to set up the Relay Warning function:

1. **Configuring Relay Event Types**  
Select the desired **Event types** from the Console or Web Browser Event type page (a description of each event type is given later in the *Relay Alarm Events setting* subsection).
2. **Activate your settings**  
After completing the configuration procedure, you will need to activate your EDS-516A's Relay Event Types.

## Event Setup

**Relay Warning Events Settings**

**System Events**

☐ **Override Relay 1 Warning Settings**

Power Input 1 failure(On->Off)

DI 1 (Off)  DI 1 (On)

Turbo Ring Break(Ring Master Only)

☐ **Override Relay 2 Warning Settings**

Power Input 2 failure(On->Off)

DI 2 (Off)  DI 2 (On)

**Port Events**

Port	Link	Traffic-Overload	Traffic-Threshold(%)	Traffic-Duration(s)
1	<input type="button" value="Ignore"/>	<input type="button" value="Disable"/>	<input type="text" value="1"/>	<input type="text" value="1"/>
2	<input type="button" value="Ignore"/>	<input type="button" value="Disable"/>	<input type="text" value="1"/>	<input type="text" value="1"/>
3	<input type="button" value="Ignore"/>	<input type="button" value="Disable"/>	<input type="text" value="1"/>	<input type="text" value="1"/>
4	<input type="button" value="Ignore"/>	<input type="button" value="Disable"/>	<input type="text" value="1"/>	<input type="text" value="1"/>
5	<input type="button" value="Ignore"/>	<input type="button" value="Disable"/>	<input type="text" value="1"/>	<input type="text" value="1"/>
6	<input type="button" value="Ignore"/>	<input type="button" value="Disable"/>	<input type="text" value="1"/>	<input type="text" value="1"/>
7	<input type="button" value="Ignore"/>	<input type="button" value="Disable"/>	<input type="text" value="1"/>	<input type="text" value="1"/>

Event Types can be divided into two basic groups: **System Events** and **Port Events**. System Events are related to the overall function of the switch, whereas Port Events are related to the activity of a specific port.

The EDS-516A supports two relay outputs. You can configure which relay output is related to which events. This helps administrators identify the importance of the different events.

System Events	Warning Relay output is triggered when...
Power Transition (On→Off)	The EDS-516A is powered on.
Power Transition (Off→On)	The EDS-516A is powered down.
DI1 (On→Off)	Digital Input 1 is triggered by on to off transition
DI1 (Off→On)	Digital Input 1 is triggered by off to on transition
DI2 (On→Off)	Digital Input 2 is triggered by on to off transition
DI2 (Off→On)	Digital Input 2 is triggered by off to on transition

Port Events	Warning e-mail is sent when...
Link-ON	The port is connected to another device.
Link-OFF	The port is disconnected (e.g., the cable is pulled out, or the opposing device shuts down).
Traffic-Overload	The port's traffic surpasses the Traffic-Threshold for that port (provided this item is Enabled).
Traffic-Threshold (%)	Enter a non-zero number if the port's Traffic-Overload item is Enabled.
Traffic-Duration (sec.)	A Traffic-Overload warning is sent every <i>Traffic-Duration</i> seconds if the average Traffic-Threshold is surpassed during that time period.

**NOTE** The **Traffic-Overload**, **Traffic-Threshold (%)**, and **Traffic-Duration (sec)** Port Event items are related. If you Enable the Traffic-Overload event, then be sure to enter a non-zero Traffic-Threshold percentage, as well as a Traffic-Duration between 1 and 300 seconds.

## Override relay alarm settings

Select this option to override the relay warning setting temporarily. Releasing the relay output will allow administrators to fix any problems with the warning condition.

## Warning List

Use this table to see if any relay alarms have been issued.

Current Alarm List		
Index	Event	Relay
1	DI 1 failure (Off) !	1
2	DI 2 failure (Off) !	2

## Using Line-Swap-Fast-Recovery

The Line-Swap Fast Recovery function, which is enabled by default, allows the EDS-516A to return to normal operation extremely quickly after devices are unplugged and then re-plugged into different ports. The recovery time is on the order of a few milliseconds (compare this with standard commercial switches for which the recovery time could be on the order of several minutes). To disable the Line-Swap Fast Recovery function, or to re-enable the function after it has already been disabled, access either the Console utility's **Line-Swap recovery** page, or the Web Browser interface's **Line-Swap fast recovery** page, as the following figure shows:

## Configuring Line-Swap Fast Recovery

### Line Swap Fast Recovery

☒ Enable All Ports

#### Enable Line-Swap-Fast-Recovery

Setting	Description	Factory Default
Enable/Disable	Select this option to enable the Line-Swap-Fast-Recovery function	Enable

## Using Set Device IP

To reduce the effort required to set up IP addresses, the EDS-516A comes equipped with DHCP/BOOTP server and RARP protocol to set up IP addresses of Ethernet-enabled devices automatically.

When enabled, the **Set device IP** function allows The EDS-516A to assign specific IP addresses automatically to connected devices that are equipped with *DHCP Client* or *RARP* protocol. In effect, the EDS-516A acts as a DHCP server by assigning a connected device with a specific IP address stored in its internal memory. Each time the connected device is switched on or rebooted, the EDS-516A sends the device the desired IP address.

Perform the following steps to use the **Set device IP** function:

#### STEP 1—set up the connected devices

Set up those Ethernet-enabled devices connected to the EDS-516A for which you would like IP addresses to be assigned automatically. The devices must be configured to *obtain* their IP address automatically.

The devices' configuration utility should include a setup page that allows you to choose an option similar to **Obtain an IP address automatically**.

For example, Windows' **TCP/IP Properties** window is shown at the right. Although your device's configuration utility may look quite a bit different, this figure should give you some idea of what to look for.

You also need to decide to which of the EDS-516A's ports your Ethernet-enabled devices will be connected. You will need to set up each of these ports separately, as described in the following step.

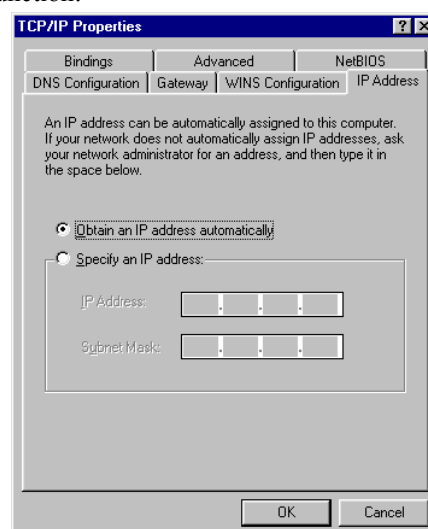
#### STEP 2

Configure the EDS-516A's **Set device IP** function, either from the Console utility or from the Web Browser interface. In either case, you simply need to enter the **Desired IP** for each port that needs to be configured.

#### STEP 3

Be sure to activate your settings before exiting.

- When using the Web Browser interface, activate by clicking **Activate**.



- When using the Console utility, activate by first highlighting the **Activate** menu option, and then press **Enter**. You should receive the **Set device IP settings are now active! (Press any key to continue)** message.

## Configuring Set Device IP

**Automatic Set Device IP by DHCP/BootP/RARP**

Port	Device's current IP	Active function	Desired IP address
1	NA	--	
2	NA	--	
3	NA	--	
4	NA	--	
5	NA	--	
6	NA	--	
7	NA	--	
8	NA	--	
9	NA	--	
10	NA	--	
11	NA	--	
12	NA	--	

**Activate**

### Desired IP Address

Setting	Description	Factory Default
IP Address	Set the desired IP of connected devices.	<i>None</i>

## Using Diagnosis

The EDS-516A provides two important tools for administrators to diagnose network systems.

### Mirror Port

**Mirror Port Settings**

Monitored port:

Watch direction:

Mirror port:

**Activate**

The **Mirror port** function can be used to monitor data being transmitted through a specific port. This is done by setting up another port (the *mirror port*) to receive the same data being transmitted from, or both to and from, the port under observation. This allows the network administrator to “sniff” the observed port and thus keep tabs on network activity.

Perform the following steps to set up the **Mirror Port** function:

**STEP 1**

Configure the EDS-516A's **Mirror Port** function from either the Console utility or Web Browser interface. You will need to configure three settings:

- |                        |  |
|------------------------|--|
| <b>Monitored Port</b>  | Select the port number of the port whose network activity will be monitored.   |
| <b>Mirror Port</b>     | Select the port number of the port that will be used to monitor the activity of the monitored port.  |
| <b>Watch Direction</b> | Select one of the following three watch direction options: <ul style="list-style-type: none"><li>• <b>Input data stream</b><br/>Select this option to monitor only those data packets coming <i>in through</i> the EDS-516A's port.</li><li>• <b>Output data stream</b><br/>Select this option to monitor only those data packets being sent <i>out through</i> the EDS-516A's port.</li><li>• <b>Bi-directional</b><br/>Select this option to monitor data packets both coming <i>into</i>, and being sent <i>out through</i>, the EDS-516A's port.</li></ul> |

**STEP 2**

Be sure to activate your settings before exiting.

- When using the Web Browser interface, activate by clicking **Activate**.
- When using the Console utility, activate by first highlighting the Activate menu option, and then press **Enter**. You should receive the **Mirror port settings are now active! (Press any key to continue)** message.

## Ping

### Use Ping Command to test Network Integrity

IP address/Name

**Ping**

The **Ping** function uses the *ping* command to give users a simple but powerful tool for troubleshooting network problems. The function's most unique feature is that even though the ping command is entered from the user's PC keyboard, the actual ping command originates from EDS-516A itself. In this way, the user can essentially control the EDS-516A and send ping commands out through its ports.

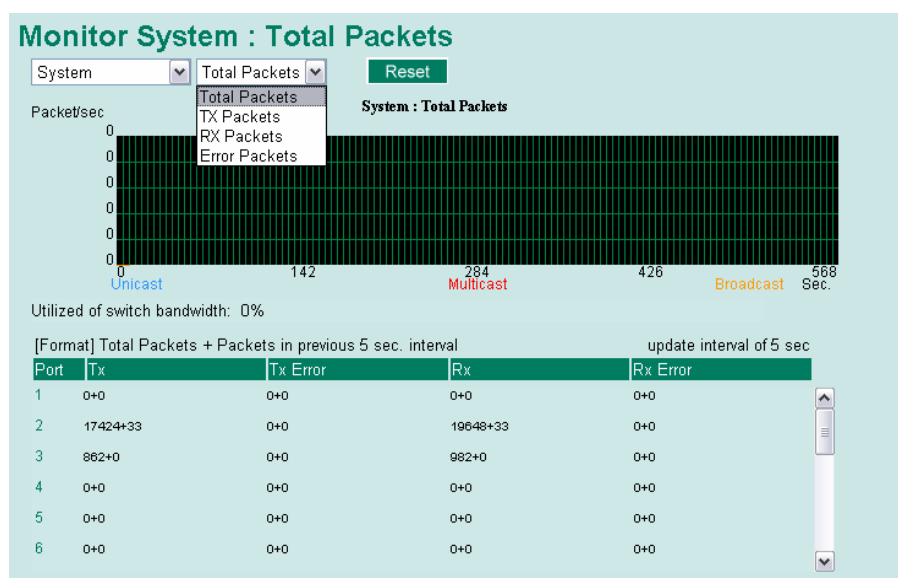
To use the Ping function, type in the desired IP address, and then press **Enter** from the Console utility, or click **Ping** when using the Web Browser interface.

## Using Monitor

You can monitor statistics in real time from the EDS-516A's web console and serial console.

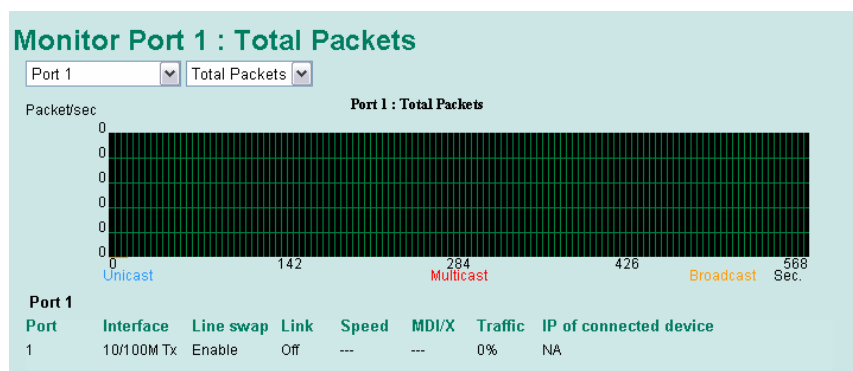
### Monitor by Switch

Access the Monitor by selecting "System" from the left selection bar. Monitor by System allows the user to view a graph that shows the combined data transmission activity of all of the EDS-516A's ports. Click one of the four options—**Total Packets**, **TX Packets**, **RX Packets**, or **Error Packets**—to view transmission activity of specific types of packets. Recall that TX Packets are packets sent out from the EDS-516A, RX Packets are packets received from connected devices, and Error Packets are packets that did not pass TCP/IP's error checking algorithm. The Total Packets option displays a graph that combines TX, RX, and TX Error, RX Error Packets activity. The graph displays data transmission activity by showing **Packets/s** (i.e., packets per second, or pps) versus **sec.** (seconds). In fact, three curves are displayed on the same graph: **Unicast** packets (in red color), **Multicast** packets (in green color), and **Broadcast** packets (in blue color). The graph is updated every few seconds, allowing the user to analyze data transmission activity in real-time.



### Monitor by Port

Access the Monitor by Port function by selecting **ALL 10/100M Ports**, or **Port  $i$** , in which  $i = 1, 2, \dots, 16$  from the left pull-down list. The **Port  $i$**  options are identical to the Monitor by System function discussed above, in that users can view graphs that show All Packets, TX Packets, RX Packets, or Error Packets activity, but in this case, only for an individual port. The **All Ports** option is essentially a graphical display of the individual port activity that can be viewed with the Console Monitor function discussed above. The All Ports option shows three vertical bars for each port. The height of the bar represents **Packets/s** for the type of packet, at the instant the bar is being viewed. That is, as time progresses, the height of the bar moves up or down so that the user can view the change in the rate of packet transmission. The blue colored bar shows **Unicast** packets, the red colored bar shows **Multicast** packets, and the orange colored bar shows **Broadcast** packets. The graph is updated every few seconds, allowing the user to analyze data transmission activity in real-time.



## Using the MAC Address Table

This section explains the information provided by the EDS-516A's MAC address table.

**All MAC Address List**

All Page 1/1

Index	MAC	Type	Port
1	00-0d-60-cc-40-f8	ucast(l)	4
2	01-00-5e-7f-ff-fa	mcast(l)	4,

The MAC Address table can be configured to display the following EDS-516A MAC address groups.

ALL	Select this item to show all EDS-516A MAC addresses
ALL Learned	Select this item to show all EDS-516A Learned MAC addresses
ALL Static Lock	Select this item to show all EDS-516A Static Lock MAC addresses
ALL Static	Select this item to show all EDS-516A Static/Static Lock /Static Multicast MAC addresses
ALL Static Multicast	Select this item to show all EDS-516A Static Multicast MAC addresses
Port x	Select this item to show all MAC addresses of dedicated ports

The table will display the following information:

MAC	This field shows the MAC address
Type	This field shows the type of this MAC address
Port	This field shows the port that this MAC address belongs to

## Using System Log

### Event Log

**Event Log Table**

Page 67/67

Index	Bootup	Date	Time	System Startup Time	Event
991	36	2007/07/30	09:02:17	54d1h30m23s	Port 1 link off
992	36	2007/07/30	09:02:21	54d1h30m27s	Port 1 link on
993	36	2007/07/30	09:02:45	54d1h30m51s	Port 1 link off
994	36	2007/07/30	09:02:47	54d1h30m53s	Port 1 link on
995	36	2007/07/30	09:08:50	54d1h36m56s	Port 1 link off
996	36	2007/07/30	09:08:54	54d1h37m0s	Port 1 link on
997	36	2007/07/30	09:09:19	54d1h37m25s	Port 1 link off
998	36	2007/07/30	09:09:20	54d1h37m26s	Port 1 link on
999	36	2007/07/30	09:13:36	54d1h41m42s	192.168.2.51 admin Auth. ok
1000	36	2007/07/30	09:16:49	54d1h44m55s	192.168.2.51 admin Auth. ok

Clear

Bootup	This field shows how many times the EDS-516A has been rebooted or cold started.
Date	The date is updated based on how the current date is set in the “Basic Setting” page.
Time	The time is updated based on how the current time is set in the “Basic Setting” page.
System Startup Time	The system startup time related to this event.
Events	Events that have occurred.

### Syslog Settings

This function provides the event logs for the syslog server. The function supports 3 configurable syslog servers and syslog server UDP port numbers. When an event occurs, the event will be sent as a syslog UDP packet to the specified syslog servers.

**Syslog Settings**

Syslog Server 1

Port Destination  (1~65535)

Syslog Server 2

Port Destination  (1~65535)

Syslog Server 3

Port Destination  (1~65535)

Activate

*Syslog Server 1*

Setting	Description	Factory Default
IP Address	Enter the IP address of 1st Syslog Server used by your network.	<i>None</i>
Port Destination (1 to 65535)	Enter the UDP port of 1st Syslog Server.	514

*Syslog Server 2*

Setting	Description	Factory Default
IP Address	Enter the IP address of 2nd Syslog Server used by your network.	<i>None</i>
Port Destination (1 to 65535)	Enter the UDP port of 2nd Syslog Server.	514

*Syslog Server 3*

Setting	Description	Factory Default
IP Address	Enter the IP address of 3rd Syslog Server used by your network.	<i>None</i>
Port Destination (1 to 65535)	Enter the UDP port of 3rd Syslog Server.	514

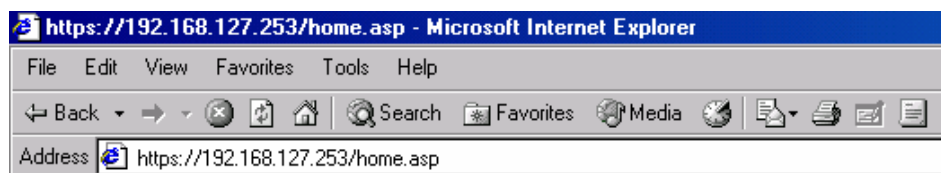
**NOTE** The following events will be recorded into the EDS-516A's Event Log table, and will then be sent to the specified Syslog Server:

12. Cold start
13. Warm start
14. Configuration change activated
15. Power 1/2 transition (Off → On), Power 1/2 transition (On → Off)
16. Authentication fail
17. Topology changed
18. Master setting is mismatched
19. DI 1/2 transition (Off → On), DI 1/2 transition (On → Off)
20. Port traffic overload
21. dot1x Auth Fail
22. Port link off / on

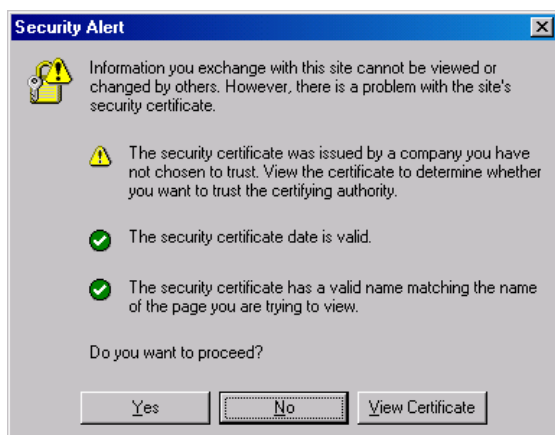
## Using HTTPS/SSL

To secure your HTTP access, the EDS-516A supports HTTPS/SSL to encrypt all HTTP traffic. Perform the following steps to access the EDS-516A's web browser interface via HTTPS/SSL.

1. Open Internet Explorer and type **https://EDS-516A's IP address** in the address field. Press Enter to establish the connection.



- Warning messages will pop out to warn the user that the security certificate was issued by a company they have not chosen to trust.



- Select **Yes** to enter the EDS-516A's web browser interface and access the web browser interface secured via HTTPS/SSL.



**NOTE** MOXA provides a Root CA certificate. After installing this certificate into your PC or notebook, you can access the web browser interface directly and will not see any warning messages again. You may download the certificate from the EDS-516A's CD-ROM.

## EDS Configurator GUI

---

EDS Configurator is a comprehensive Windows-based GUI that is used to configure and maintain multiple EDS-516A switches. A suite of useful utilities is available to help you locate EDS-516A switches attached to the same LAN as the PC host (regardless of whether or not you know the IP addresses of the switches), connect to an EDS-516A whose IP address is known, modify the network configurations of one or multiple EDS-516A switches, and update the firmware of one or more EDS-516A switches. EDS Configurator is designed to provide you with instantaneous control of *all* of your EDS-516A switches, regardless of location. You may download the EDS Configurator software from MOXA's website free of charge.

This chapter includes the following sections:

- ☐ **Starting EDS Configurator**
- ☐ **Broadcast Search**
- ☐ **Search by IP address**
- ☐ **Upgrade Firmware**
- ☐ **Modify IP Address**
- ☐ **Export Configuration**
- ☐ **Import Configuration**
- ☐ **Unlock Server**

## Starting EDS Configurator

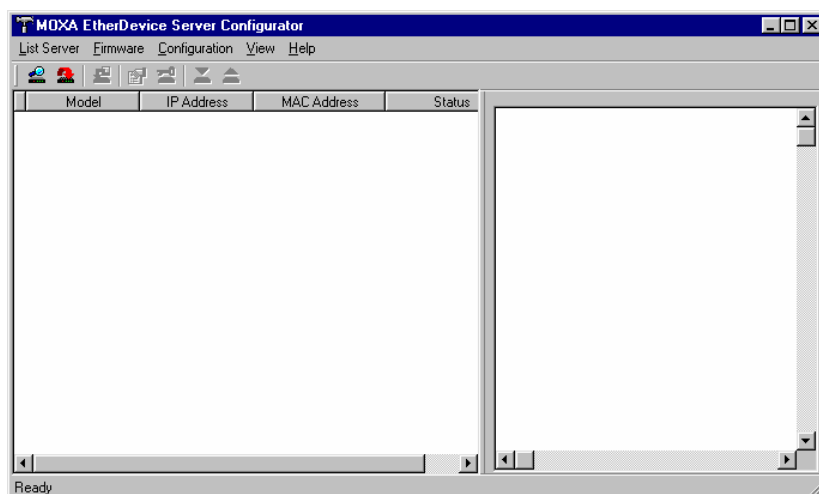
To start EDS Configurator, locate and then run the executable file **edscfgui.exe**.

**NOTE** You may download the EDS Configurator software from MOXA's website at [www.moxa.com](http://www.moxa.com).


For example, if the file was placed on the Windows desktop, it should appear as follows. Simply double click on the icon to run the program.



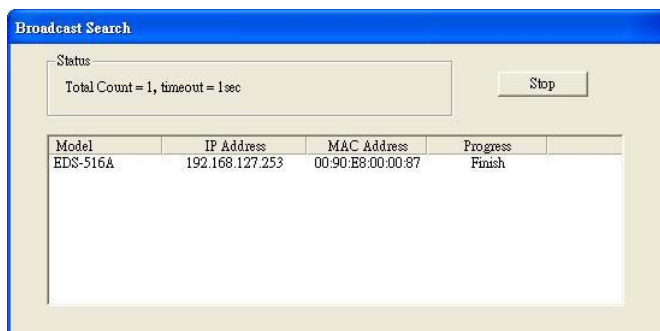
The MOXA EtherDevice Server Configurator window will open, as shown below.



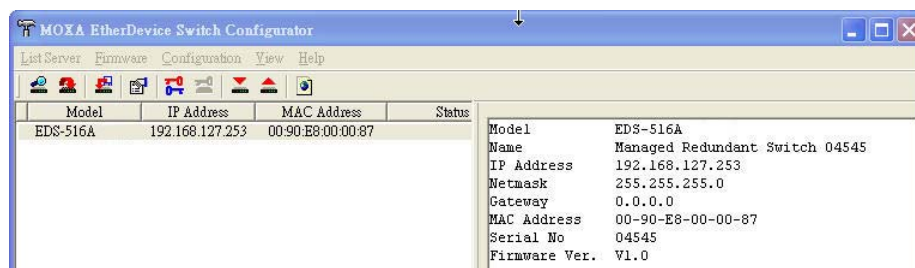
## Broadcast Search

Use the Broadcast Search utility to search the LAN for all EDS-516A switches that are connected to the LAN. Note that since the search is done by MAC address, Broadcast Search will not be able to locate MOXA EtherDevice Servers connected outside the PC host's LAN. Start by clicking the Broadcast Search icon , or by selecting **Broadcast Search** under the **List Server** menu.


The Broadcast Search window will open, displaying a list of all switches located on the network, as well as the progress of the search.



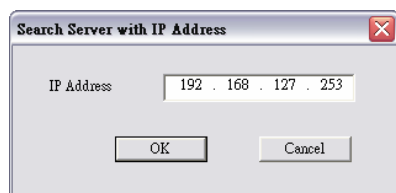
Once the search is complete, the Configurator window will display a list of all switches that were located.



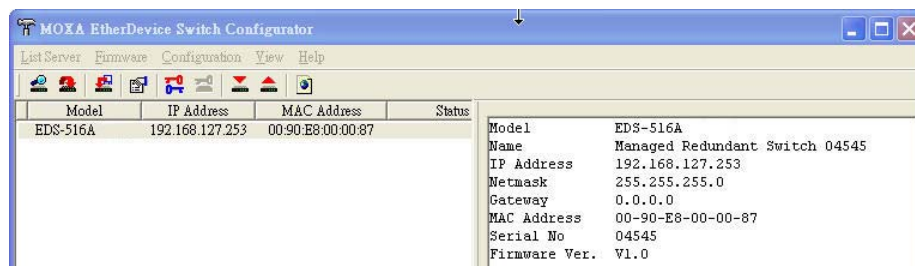
## Search by IP address

This utility is used to search for EDS-516A switches one at a time. Note that the search is conducted by IP address, so you should be able to locate any EDS-516A that is properly connected to your LAN, WAN, or even the Internet. Start by clicking the Specify by IP address icon , or by selecting **Specify IP address** under the **List Server** menu.

The **Search Server with IP Address** window will open. Enter the IP address of the switch you wish to search for, and then click **OK**.



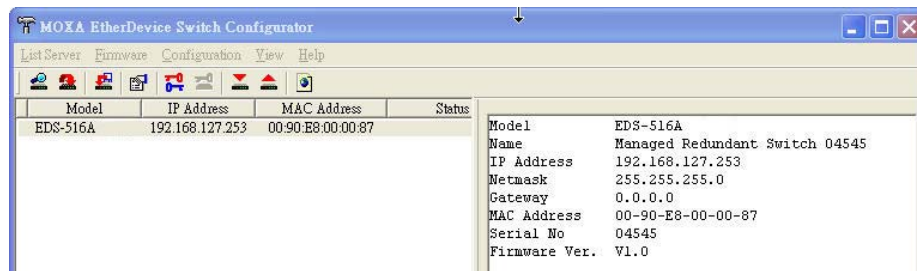
Once the search is complete, the Configurator window will add the switch to the list of switches.




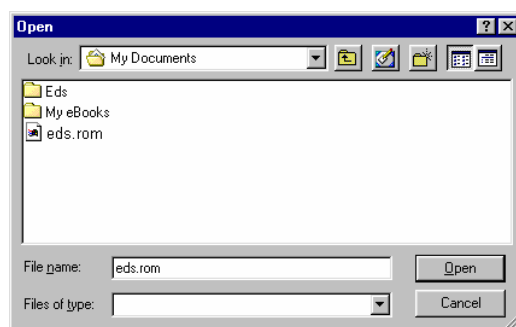
## Upgrade Firmware

Keep your EDS-516A up to date with the latest firmware from MOXA. Perform the following steps to upgrade the firmware:


1. Download the updated firmware (\*.rom) file from the MOXA website ([www.moxa.com](http://www.moxa.com)).
2. Click the switch (from the **MOXA EtherDevice Server Configurator** window) whose firmware you wish to upgrade to highlight it.



3. Click the **Upgrade Firmware** toolbar icon , or select **Upgrade** under the **Firmware** menu. If the switch is Locked, you will be prompted to input the switch's User Name and Password.
4. Use the **Open** window to navigate to the folder that contains the firmware upgrade file, and then click the correct "\*.rom" file (**eds.rom** in the example shown below) to select the file. Click **Open** to activate the upgrade process.



## Modify IP Address


You may use the Modify IP Address function to reconfigure the EDS-516A's network settings. Start by clicking the Modify IP address icon , or by selecting **Modify IP address** under the **Configuration** menu.

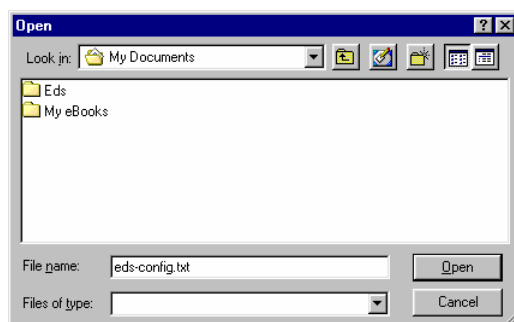
The **Setup Configuration** window will open. Checkmark the box to the left of those items that you wish to modify, and then Disable or Enable DHCP, and enter IP Address, Subnet mask, Gateway, and DNS IP. Click **OK** to accept the changes to the configuration.



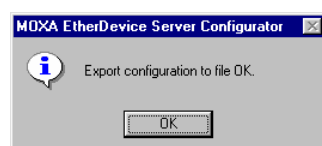
## Export Configuration

The **Export Configuration** utility is used to save the entire configuration of a particular EDS-516A to a text file. Take the following steps to export a configuration:

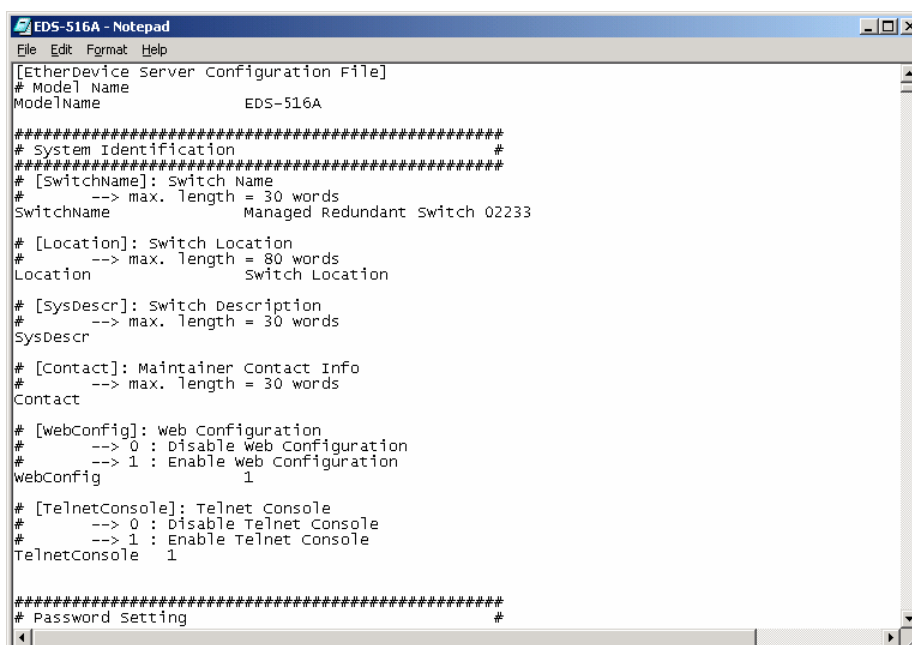
1. Highlight the switch (from the Server list in the Configurator window's left pane), and then click the **Export** toolbar icon  or select **Export Configuration** from the **Configuration** menu. Use the **Open** window to navigate to the folder in which you want to store the configuration, and then type the name of the file in the File name input box. Click **Open**.



2. Click **OK** when the **Export configuration to file OK** message appears.




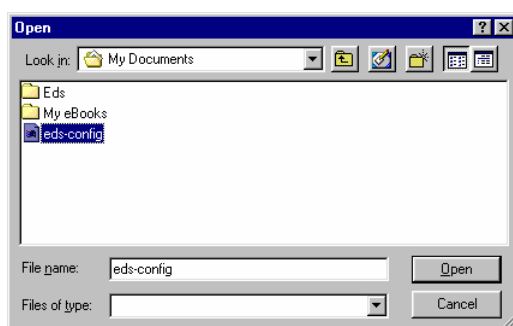
3. You may use a standard text editor, such as Notepad under Windows, to view and modify the newly created configuration file.



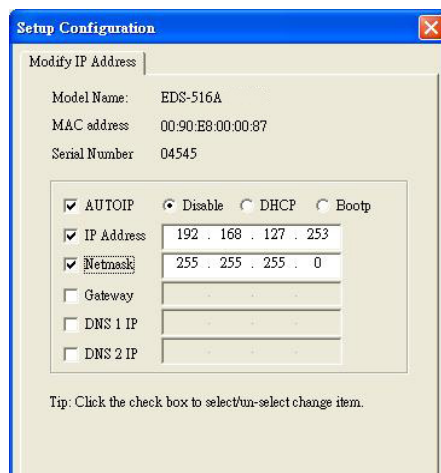
## Import Configuration

The **Import Configuration** function is used to import an entire configuration from a text file to the EDS-516A. This utility can be used to transfer the configuration from one EDS-516A to another, by first using the Export Configuration function (described in the previous section) to save a switch configuration to a file, and then using the Import Configuration function. Perform the following steps to import a configuration:

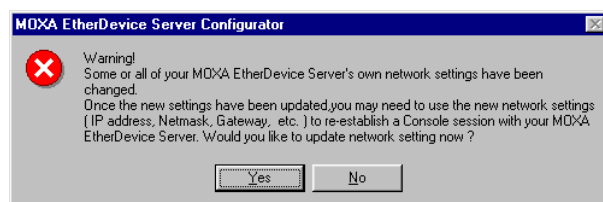
1. Highlight the server (from the MOXA EtherDevice Switch list in the Configurator window's left pane), and then click the **Import** toolbar icon , or select **Import Configuration** from the **Configuration** menu.
2. Use the **Open** window to navigate to the text file that contains the desired configuration. Once the file is selected, click **Open** to initiate the import procedure.



3. The **Setup Configuration** window will be displayed, with a special note attached at the bottom. Parameters that have been changed will be activated with a checkmark. You may make more changes if necessary, and then click **OK** to accept the changes.



4. Click **Yes** in response to the following warning message to accept the new settings.




## Unlock Server

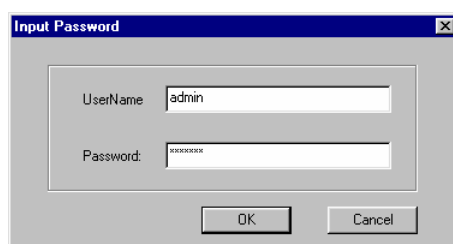
The Unlock Server function is used to open a password protected switch so that the user can modify its configuration, import/export a configuration, etc. There are six possible responses under the **Status** column. The **Status** of an EDS-516A indicates how the switch was located (by MOXA EtherDevice Switch Configurator), and what type of password protection it has.

The six options are as follows (note that the term **Fixed** is borrowed from the standard *fixed IP address* networking terminology):

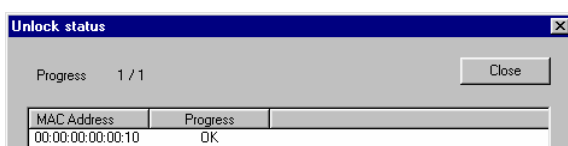
- **Locked**  
The switch is password protected, “Broadcast Search” was used to locate it, and the password has not yet been entered from within the current Configurator session.
- **Unlocked**  
The switch is password protected, “Broadcast Search” was used to locate it, and the password has been entered from within the current Configurator session. Henceforth during this Configurator session, activating various utilities for this switch will not require re-entering the server password.
- **Blank**  
The EDS-516A is not password protected, and “Broadcast Search” was used to locate it.
- **Fixed**  
The EDS-516A is not password protected, and “Search by IP address” was used to locate it manually.
- **Locked Fixed**  
The EDS-516A is password protected, “Search by IP address” was used to locate it manually, and the password has not yet been entered from within the current Configurator session.
- **Unlocked Fixed**  
The EDS-516A is password protected, “Search by IP address” was used to locate it manually, and the password has been entered from within the current Configurator session. Henceforth during this Configurator session, activating various utilities for this EDS-516A will not require re-entering the server password.

Follow the steps given below to unlock a locked EDS-516A (i.e., an EDS-516A with Status “Locked” or “Locked Fixed”). Highlight the server (from the MOXA EtherDevice Switch list in the Configurator window’s left pane), and then click the **Unlock** toolbar icon , or select **Unlock** from the **Configuration** menu.

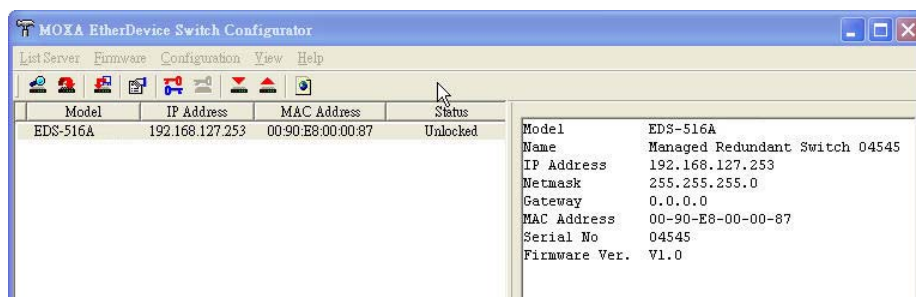
1. Enter the switch’s **User Name** and **Password** when prompted, and then click **OK**.



2. When the **Unlock status** window reports Progress as **OK**, click the **Close** button in the upper right corner of the window.



3. The status of the switch will now read either **Unlocked** or **Unlocked Fixed**.



## MIB Groups

---

The EDS-516A comes with built-in SNMP (Simple Network Management Protocol) agent software that supports cold/warm start trap, line up/down trap, and RFC 1213 MIB-II.

The standard MIB groups supported by the EDS-516A are:

**MIB II.1 – System Group**

sysORTable

**MIB II.2 – Interfaces Group**

ifTable

**MIB II.4 – IP Group**

ipAddrTable

ipNetToMediaTable

IpGroup

IpBasicStatsGroup

IpStatsGroup

**MIB II.5 – ICMP Group**

IcmpGroup

IcmpInputStatus

IcmpOutputStats

**MIB II.6 – TCP Group**

tcpConnTable

TcpGroup

TcpStats

**MIB II.7 – UDP Group**

udpTable

UdpStats

**MIB II.10 – Transmission Group**

dot3  
dot3StatsTable

**MIB II.11 – SNMP Group**

SnmpBasicGroup  
SnmpInputStats  
SnmpOutputStats

**MIB II.17 – dot1dBridge Group**

dot1dBase  
    dot1dBasePortTable  
dot1dStp  
    dot1dStpPortTable  
dot1dTp  
    dot1dTpFdbTable  
    dot1dTpPortTable  
    dot1dTpHcPortTable  
    dot1dTpPortOverflowTable  
pBridgeMIB  
    dot1dExtBase  
    dot1dPriority  
    dot1dGarp  
qBridgeMIB  
    dot1qBase  
    dot1qTp  
        dot1qFdbTable  
        dot1qTpPortTable  
        dot1qTpGroupTable  
        dot1qForwardUnregisteredTable  
dot1qStatic  
    dot1qStaticUnicastTable  
    dot1qStaticMulticastTable  
dot1qVlan  
    dot1qVlanCurrentTable  
    dot1qVlanStaticTable  
    dot1qPortVlanTable

The EDS-516A also provides a private MIB file, located in the file “MOXA-EDS516A-MIB.my” on the EDS-516A Series utility CD-ROM.

**Public Traps:**

1. Cold Start
2. Link Up
3. Link Down
4. Authentication Failure
5. dot1dBridge New Root
6. dot1dBridge Topology Changed

**Private Traps:**

1. Configuration Changed
2. Power On
3. Power Off
4. Traffic Overloaded
5. Turbo Ring Topology Changed
6. Turbo Ring Coupling Port Changed
7. Turbo Ring Master Mismatch

# Specifications

---

**Technology**

Standards	IEEE802.3, 802.3u, 802.3x, 802.1D, 802.1W, 802.1Q, 802.1p, 802.1X, 802.3ad
Protocols	IGMP V1/V2/V3 device, GMRP, GVRP, SNMP V1/V2c/V3, DHCP Server/Client, BOOTP, TFTP, SNTP, SMTP, RARP RMON and EDS-SNMP OPC Server Pro (Optional)
MIB	MIB-II, Ethernet-Like MIB, P-BRIDGE MIB, Q-BRIDGE MIB, Bridge MIB, RSTP MIB, RMON MIB Group 1,2,3,9

**Interface**

RJ45 Ports	10/100BaseT(X) auto negotiation speed, F/H duplex mode, and auto MDI/MDI-X connection
Fiber Ports	100BaseFX (SC/ST connector) and optional 1000BaseSX/LX/LHX/ZX (LC connector)
Console	RS-232 (RJ45)
LED Indicators	PWR1, PWR2, FAULT, 10/100M (TP port), 100M (Fiber port), 1000M, Ring Master and Ring Coupler
Alarm Contact	Two relay outputs with current carrying capacity of 1A @ 24 VDC
Digital Input	Two inputs with the same ground, but electrically isolated from the electronics <ul style="list-style-type: none"><li>• For state “1”: +13 to +30V</li><li>• For state “0”: -30 to +3V</li><li>• Max. input current: 8 mA</li></ul>

**Optical Fiber  
100BaseFX****Distance:**

Multi mode:	0 to 5 km, 1300 nm (50/125 $\mu$ m, 800 MHz*km) 0 to 4 km, 1300 nm (62.5/125 $\mu$ m, 500 MHz*km)
-------------	--

**Min. TX Output:**

Multi mode :	-20 dBm
--------------	---------

**Max. TX Output:**

Multi mode :	-14 dBm
--------------	---------

**Sensitivity:**

Multi mode : -34 to -30 dBm

**Power**

Input Voltage 24 VDC(12 to 45 VDC), redundant inputs

Input Current (@24V) 0.31A (EDS-516A)  
0.39A (EDS-516A-MM-SC/ST)

Connection Two removable 6-pin terminal blocks

Overload Current

Protection Present

Reverse Polarity Protection Present

**Mechanical**

Casing IP30 protection, metal case

Dimensions 95 x 135 x 140 mm (W x H x D)

Weight 1.586 kg

Installation DIN-Rail, Wall Mounting (optional kit)

**Environmental**Operating Temperature 0 to 60°C (32 to 140°F)  
-40 to 75°C (-40 to 167°F) for -T models

Storage Temperature -40 to 85°C (-40 to 185°F)

Ambient Relative Humidity 5% to 95% (non-condensing)

**Regulatory Approvals**Safety UL60950-1, UL508, CSA C22.2 No. 60950-1,  
EN60950-1Hazardous Location UL/cUL Class I, Division 2, Groups A, B, C,  
and D, ATEX Class I, Zone 2, EEx nC IIC (Pending)

Maritime DNV, GL

EMI FCC Part 15, CISPR (EN55022) class A

EMS EN61000-4-2 (ESD), Level 3

EN61000-4-3 (RS), Level 3

EN61000-4-4 (EFT), Level 3

EN61000-4-5 (Surge), Level 3

EN61000-4-6 (CS), Level 3

EN61000-4-8

EN61000-4-11

Shock IEC60068-2-27

Freefall IEC60068-2-32

Vibration IEC60068-2-6

**WARRANTY**

5 years

# C

## Service Information

---

This appendix shows you how to contact MOXA for information about this and other products, and how to report problems.

In this appendix, we cover the following topics.

- ☐ **MOXA Internet Services**
- ☐ **Problem Report Form**
- ☐ **Product Return Procedure**

## MOXA Internet Services

Customer satisfaction is our primary concern. To ensure that customers receive the full benefit of our products, MOXA Internet Services has been set up to provide technical support, driver updates, product information, and user's manual updates.

### The following services are provided

E-mail for technical support.....[support@moxa.com](mailto:support@moxa.com) (Worldwide)  
.....[support@usa.moxa.com](mailto:support@usa.moxa.com) (The Americas)

World Wide Web (WWW) Site for product information:

.....<http://www.moxa.com>

## MOXA EDS-516A Series

This image shows a full page of white paper with horizontal blue or grey ruling lines. The lines are evenly spaced and run across the width of the page, providing a template for writing. There are no margins, text, or other markings on the page.

## Product Return Procedure

For product repair, exchange, or refund, the customer must:

- ◆ Provide evidence of original purchase.
- ◆ Obtain a Product Return Agreement (PRA) from the sales representative or dealer.
- ◆ Fill out the Problem Report Form (PRF). Include as much detail as possible for a shorter product repair time.
- ◆ Carefully pack the product in an anti-static package, and send it, pre-paid, to the dealer. The PRA should be visible on the outside of the package, and include a description of the problem, along with the return address and telephone number of a technical contact.