

NuFlo™

SCM Viewer™

User Manual

Revision History

The following table shows the revision history for this document:

<i>Date...</i>	<i>Description...</i>	<i>Approved by...</i>
2-6-2006	Initial release of SCM Viewer	

© 2006 NuFlo Technologies, Inc. All information contained in this publication is confidential and proprietary property of NuFlo Technologies, Inc. Any reproduction or use of these instructions, drawings, or photographs without the express written permission of an officer of NuFlo Technologies, Inc. is forbidden.

Barton, MVX, ScanBase, Scanner, and ScanWin are registered trademarks of NuFlo Technologies, Inc. in the U.S.A. and other countries.

Acrobat Reader is a registered trademark of Adobe Systems Incorporated.

Daniel is a registered trademark of Daniel Measurement & Control, Inc.

ISaGRAF is a registered trademark of C. J. International.

Annubar and Rosemount are registered trademarks of Rosemount, Inc.

V-Cone is a registered trademark of McCrometer, Inc.

Windows is a registered trademark of Microsoft Corporation in the U.S.A. and other countries.

All Rights Reserved.
Printed in the United States of America.

Manual No. 30165020, Rev. A
February 2006

TABLE OF CONTENTS

INTRODUCTION.....	5
About This Manual.....	5
CHAPTER 1: INSTALLING SCM VIEWER.....	7
Installing SCM Viewer.....	7
Uninstalling SCM Viewer.....	9
CHAPTER 2: USING SCM VIEWER	11
About SCM Files.....	11
Opening SCM Viewer	11
File Menu.....	11
Open.....	12
Send to Mail Recipient.....	13
Close	14
Recent Files List	14
Exit.....	14
Settings	14
Options.....	14
History Tab.....	14
Units Tab.....	16
Unit Type	16
Log Level.....	16
Window	17
Help	17
About.....	17
Manual	17
Send File to NuFlo	17
CHAPTER 3: VIEWING AN SCM FILE.....	19
Opening an SCM File.....	19
Changing Column Width.....	20
Hourly / Daily History Tabs.....	21
Graph	22

Export from Graph Window	22
Print from Graph Window	22
Close	22
Export from Hourly / Daily History Tab	23
Print from Hourly / Daily History Tab	23
Configuration Tab	23
Export	23
Print	23
Events	24
Export All / Export	24
Print	24
User Changes.....	24
Export All / Export	25
Print	25
ScanPLC.....	25
Export	25
Report	25
Print	25
DataLoggers Tab	26
Graph	26
Export from Graph Window	27
Print from Graph Window	27
Close	27
Export from DataLogger Tab	27
Print from DataLoggers Tab	27
Log	28
Export	28
Print	28
Find.....	28
CHAPTER 4: TROUBLESHOOTING INFORMATION.....	29
Troubleshooting Information	29
Problem: Unable to Install SCM Viewer.....	29

Introduction

SCM Viewer is an offline viewer for SCM-formatted binary files downloaded from Scanner Measurement RTUs. The 32-bit SCM Viewer application supports viewing, exporting and graphing of data contained within SCM files.

SCM Viewer is required for viewing data files downloaded with ScanWin Lite. ScanWin PRO users have the option of viewing downloaded files within ScanWin or within SCM Viewer. ScanWin (Lite or PRO) can be configured to automatically initiate SCM Viewer after a data download. See the ScanWin Lite or ScanWin PRO manual for details.

SCM Viewer's easy-to-use interface offers a level of functionality that is equal to or greater than that available within ScanWin PRO.

About This Manual

The SCM Viewer User Manual provides the information and procedures required to install, uninstall, and use SCM Viewer.

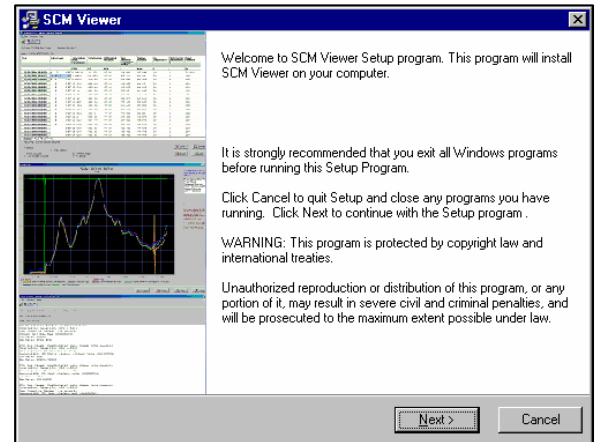
This manual is intended for field technicians and managers who have a basic understanding of Microsoft Windows.® Prior knowledge of SCM Viewer is not required.

Chapter 1: Installing SCM Viewer

Installing SCM Viewer

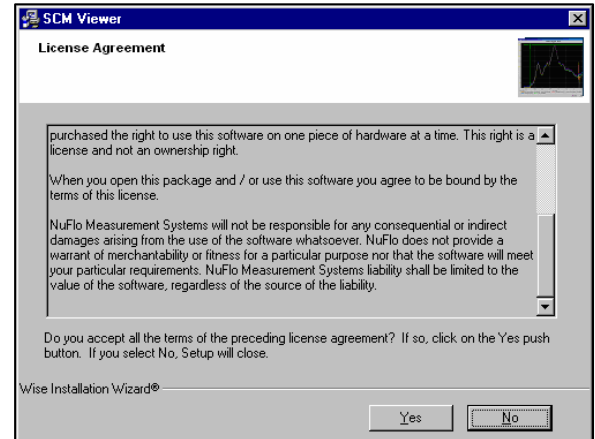
To install SCM Viewer, perform the following steps:

1. Open the ScanWin installation CD, and click on SCMViewer_B100N_Setup.exe.
2. Follow the on-screen instructions.
3. The **Welcome Screen** will appear. Close all Windows programs, then click the *Next* button.



4. The **License Agreement** dialog is displayed. Use the scroll bar to read the entire message. Click the *Yes* button if you agree to the terms of the agreement and wish to continue the installation.

Clicking the *No* button at this time or the *Cancel* button in later dialogs will cause the following “Setup is not complete” message to be displayed.

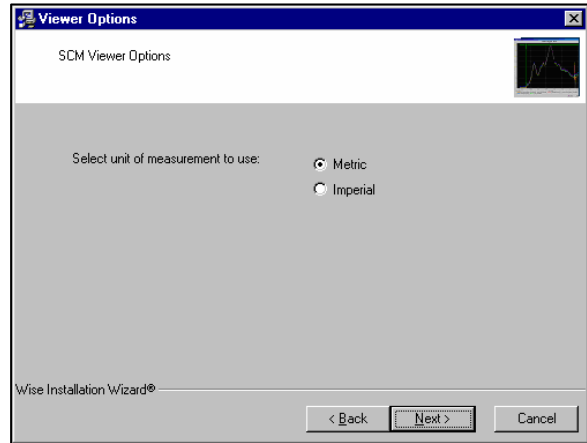


You may continue the installation by clicking *Resume*, or terminate the installation by clicking *Exit Setup*.

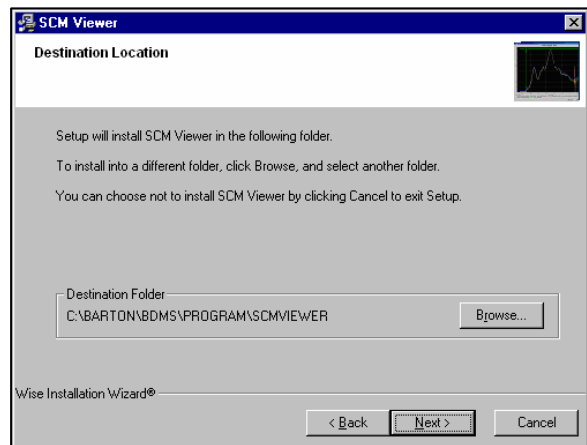


5. Choose your default unit of measurement.

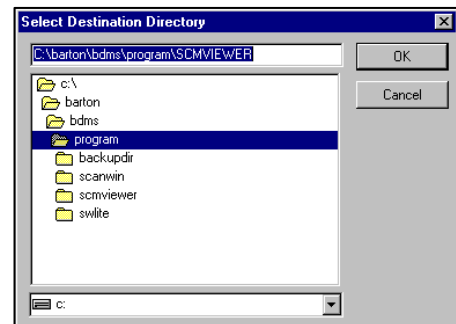
This unit can later be changed using the program's options settings.



6. By default, the program files will be saved to your C:\BARTON\BDMS\PROGRAM\SCMVIEWER. If this location is acceptable, click *Next* to continue.

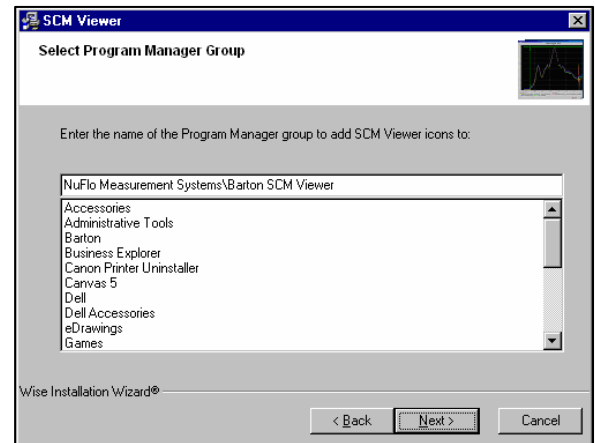


7. To install the program in a different location, click on the *Browse* button. The window shown at right will appear. Navigate to the folder in which you wish to install the files, and lick *OK*. If the directory does not already exist, you must create it before you perform this step.

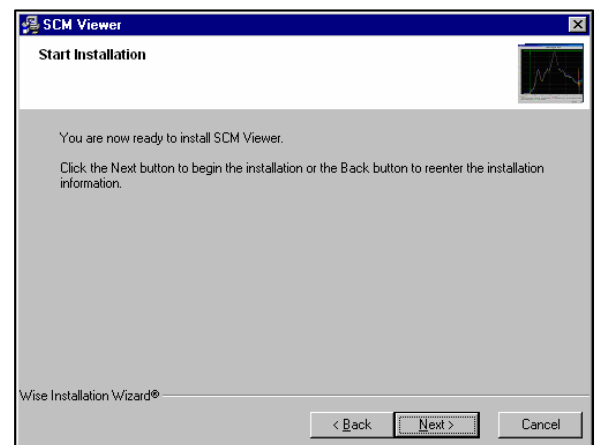


8. The SCM Viewer installation program gives you the option of choosing a program manager group or creating your own program manager group.

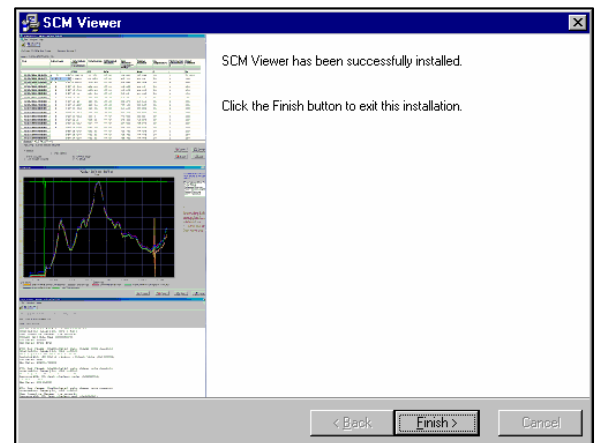
Click *Next* to continue.



9. The **Start Installation** dialog window will appear. Click on the *Next* button to install SCM Viewer.



10. When the installation is completed, the dialog window at right appears, and a shortcut icon will appear on the desktop of your computer. Click *Finish*.



Uninstalling SCM Viewer

To uninstall SCM Viewer, select the application within the Control Panel>Add/Remove Program menu, or optionally, run the file 'Unwise.exe' within the install directory: C:\BARTON\BDMS\PROGRAM\SCMVIEWER. Only application files will be deleted when the application is uninstalled, all data files and directories will remain on your hard drive.

Chapter 2: Using SCM Viewer

About SCM Files

An SCM file can contain up to five different types of data:

- Configuration data of selected flowruns and/or system (“S”) data
- Historical data (daily and hourly) of selected flowruns
- Event data of selected flowruns noted and/or system (“S”) data
- User change data of selected flowruns and/or system (“S”) data
- Data logger data of selected data loggers

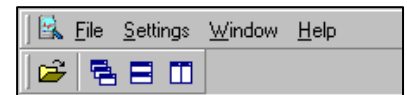
By default, SCM files are saved to the following directory: c:\Barton\BDMS\Data\Reports.

This destination directory is user-configurable, however. See the ScanWin PRO or ScanWin Lite manual for information on customizing the destination directory.

Opening SCM Viewer

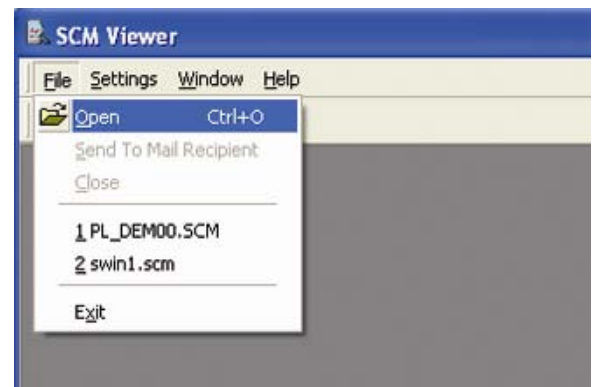
To open SCM Viewer, click on the shortcut icon on the desktop of your computer, or click on the Start menu, navigate to the SCM Viewer application (NuFlo Measurement Systems>Barton SCM Viewer>SCM Viewer), and click to open the application.

The Main Menu screen will appear. The main menu has four headings – *File*, *Settings*, *Window* and *Help*.



File Menu

The file menu consists of five menu options: *Open*, *Send to Mail Recipient*, *Close*, *Recent Files* and *Exit*.



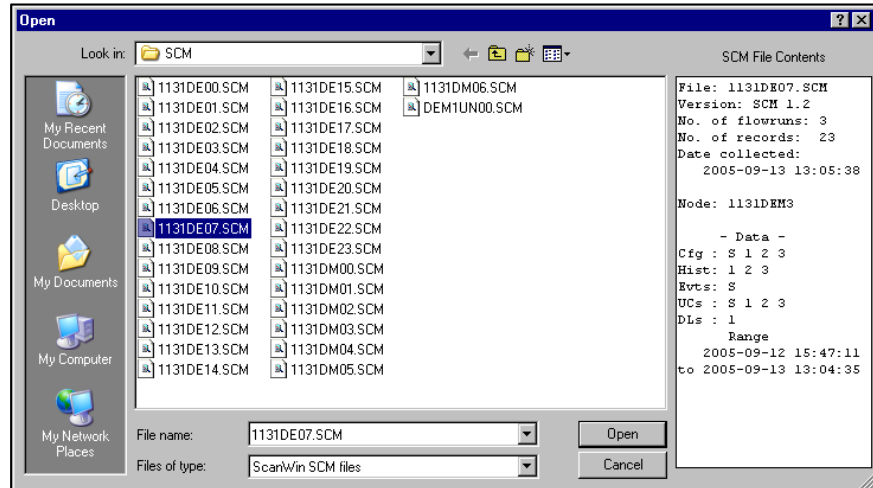
Open

Select File>Open to view a list of SCM files.

Click on an SCM file to display a summary of file contents in the right column of the screen.

The SCM File contents can contain the following information:

- File name
- SCM file format version
- Number of flowruns within the file
- Number of records within the file
- The date and time the data was downloaded from a Scanner
- The name of the node related to the data collected
- Data: A summary of data types contained in the file, and the number of flowruns or dataloggers represented. An “S” indicates data that is specific to the entire system.
- Range: The beginning and ending date/time of all data collections within the file. Not all data will have the same beginning and ending date/time, but all data will fall on the beginning or ending date or somewhere in between.



To open the file, push the **Open** button. The screen shown on page 13 will appear. See Chapter 3 for a detailed explanation of parameters displayed.

To close the dialog without opening a file, click the **Cancel** button.

SCM Viewer - [Node: PL_DEMO (File: PL_DEMO0.SCM)]

File Settings Window Help

Poll Date: 2005-12-20 11:26:29 Firmware: NFlo P4.3.2Fb2 File: C:\Barton\bdms\DATA\EXPORTS\SCM\PL_DEMO0.SCM

Hourly History Daily History Configuration Events ScanPLC Log

Time	Status Flags	Total Volume	Differential Pressure	Flow Extension	Flowing Pressure	Live Temperature	Meter factor	Flowtime
		E3M3	kPa		kPaa	C		%
2005-08-24 22:00:00	U P GV	0.348	19.161	332.916	706.023	21.111	1.000	100.000
2005-08-24 23:00:00	U P GV	0.348	19.161	332.916	706.023	21.111	1.000	100.000
2005-08-25 00:00:00	U P GV	0.348	19.161	332.916	706.023	21.111	1.000	100.000
2005-08-25 01:00:00	U P GV	0.348	19.161	332.916	706.023	21.111	1.000	100.000
2005-08-25 02:00:00	U P GV	0.348	19.161	332.916	706.023	21.111	1.000	100.000
2005-08-25 03:00:00	U P GV	0.348	19.161	332.916	706.023	21.111	1.000	100.000
2005-08-25 04:00:00	U P GV	0.348	19.161	332.916	706.023	21.111	1.000	100.000
2005-08-25 05:00:00	U P GV	0.348	19.161	332.916	706.023	21.111	1.000	100.000
2005-08-25 06:00:00	U P GV	0.348	19.161	332.916	706.023	21.111	1.000	100.000

PL_DEMO [#1] PL [#2]

Status Flag - Current selected date/time

p - partial H - HW out of range D - DP default
e - estimate F - flowrun alarms P - SP default
M - memory fault C - check alarms T - Temp default
E - events occurred 1 - status #1 G - Gr/RHof default
U - user changes occurred 2 - status #2 V - Hv default

Print Selection
 All Tabs
 Current Tab
Print

Graph Export

Send to Mail Recipient

The Send to Mail Recipient option allows a user to send an SCM file as an email attachment. To send a file, select the SCM file, then choose File>Send to Mail Recipient. A message is composed in the default e-mail program, and the SCM file will appear as an attachment. Simply enter the recipient's email address in the "To..." field and press Send to transmit the file via email.

The Send to Mail Recipient option is active only when an SCM file is open.

Please review this file: 1131DE07.SCM (Node: 1131DEM3) - Message (Plain Text)

File Edit View Insert Format Tools Actions Help

Send

This message has not been sent.

To...

Cc...

Subject: Please review this file: 1131DE07.SCM (Node: 1131DEM3)

Attach... 1131DE07.SCM (29 KB) Attachment Options...

File: 1131DE07.SCM
Version: SCM 1.2
No. of flowruns: 3
No. of records: 23
Date collected:
2005-09-13 13:05:38

Node: 1131DEM3

- Data -
Cfg: S 1 2 3
Hist: 1 2 3
Evs: S
UCs: S 1 2 3
DLs: 1
Range
2005-09-12 15:47:11
to 2005-09-13 13:04:35

Close

Pressing the *Close* button will close the active open SCM file.

Recent Files List

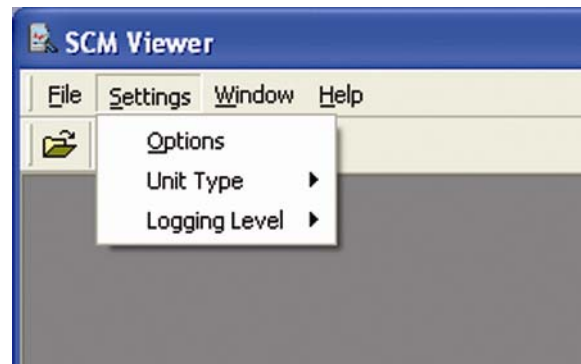
The Recent Files List contains the four most recently opened SCM files. Any of these files can be opened simply by clicking on it.

Exit

Pressing the Exit button will close the application.

Settings

The Settings menu options (*Options*, *Unit Type* and *Logging Level*) allow the user to change settings affecting the application. Changes will not affect currently open SCM files, but will apply to any files opened after the settings are changed.



Options

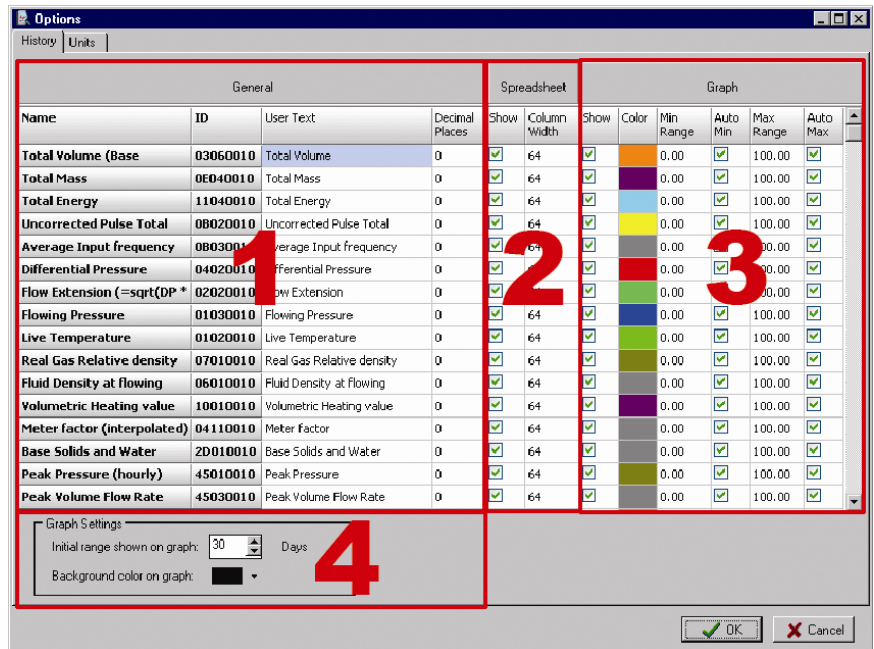
The Options menu is the general dialog that specifies how data will be represented within the application. Changes made to this dialog become effective only after the 'OK' button is pressed. To exit the dialog without making changes, press 'Cancel.'

History Tab

The History tab allows the user to specify how specific data will be displayed within the application. The settings are categorized under four main groupings: General, Spreadsheet, Graph, and Graph Settings. The user can change the following data (as shown in the column headings of the screen capture on page 15):

1) General

- Name: The name NuFlo applications use internally to describe the data.
- ID: The hex number NuFlo applications use internally for this data.
- User Text: The name the user can set to describe the data.
- Decimal Places: The number of decimal places displayed in the values shown within the application. If the Decimal Places setting is set at -1, then the decimal places will be identical to the decimal places used within the SCM file.



2) Spreadsheet

- Show: This checkbox determines whether or not the data is shown on the spreadsheet. If the checkbox is checked, the data is shown on the spreadsheet; if the checkbox is not checked, the data will not be shown on the spreadsheet. If the data is not shown on the spreadsheet, it cannot be shown on the graph either.
- Column Width: This value is the width this data takes up on the spreadsheet. The column width can be changed on the fly by positioning the cursor on the right boundary of a column and dragging it to the right or left.

3) Graph

- Show: This checkbox determines whether or not the data is shown on the graph. If the checkbox is checked, the data is shown on the graph; if the checkbox is not checked, the data will not be shown on the graph. If the data is not shown on the spreadsheet, it cannot be shown on the graph either.
- Color: The color used to draw the line of data on a graph. To change the color, click on the color displayed and then select a new color. Press “OK” to select the color. Click “Cancel” to revert to the original color.
- Min Range: The minimum value to be shown on the graph. This number is ignored if “Auto Min” is selected.
- Auto Min: Automatically determines the minimum value to allow the bottom-most range data to be shown on the graph.
- Max Range: The maximum value to be shown on the graph. This number is ignored if “Auto Max” is selected.
- Auto Max: Automatically determines the maximum value to allow the bottom-most range data to be shown on the graph.

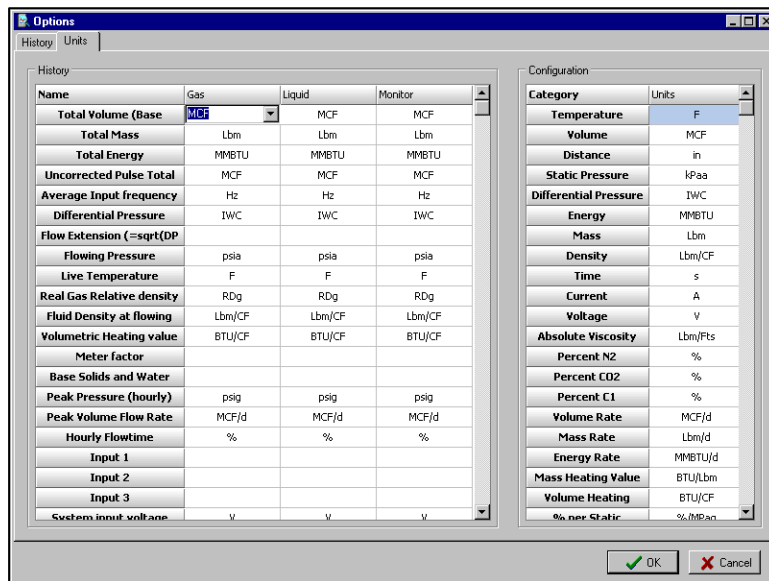
4) Graph Settings

The Graph Settings box near the bottom of the screen allows the user to establish the number of days of data that are visible at one time on the graph and to specify the background color of the graph. All data is loaded into the graph. The range refers to how many days are visible in the default graph view. The user can use the scroll bars to view additional data.

Units Tab

The Unit tab allows the user to specify the unit to use with each item of data. For historical data, the user can select different units depending upon the type of flowrun: gas, liquid or monitor. Units for configuration data are based upon categories and any changes here will affect all data within that category.

To change a unit, simply select the cell with the old unit to view a dropdown menu. Then, choose a new unit from the dropdown options. If no dropdown menu appears, units are not applicable for the selected type of data, or the unit cannot be changed from this screen (and must be edited manually within the related scmviewer.ini file).



Unit Type

The Unit Type menu allows the user to select which unit format the application will use, either metric or Imperial. The default is set when the application is installed (see *Chapter 1: Installing SCM Viewer*).

Log Level

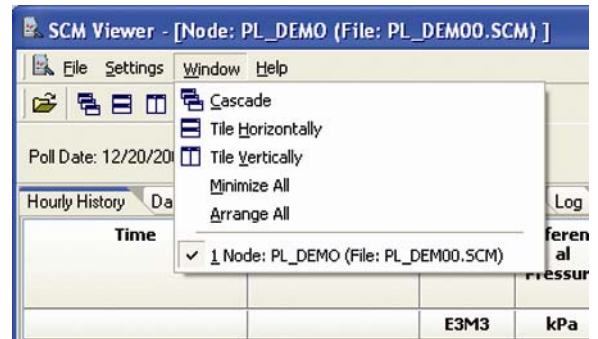
The Log Level menu sets the level of messages that will be written to the log file while loading an SCM file into the viewer. The following list contains the common settings. Level 20 is the default.

- 1 – Only error messages
- 10 – As above plus warning messages and summary
- 20 – As above plus basic conversion tracking
- 40 – As above plus more conversion tracking
- 50 – As above plus conversion processing details
- 60 – As above plus detailed tracking
- 80 – As above plus extensive tracking
- 100 – As above plus internal details

110 – As above plus extensive details

Window

The Window menu allows the user to either select an open SCM file or automatically arrange the open files, as shown below. The Window options are available for selection only when an SCM file is open.



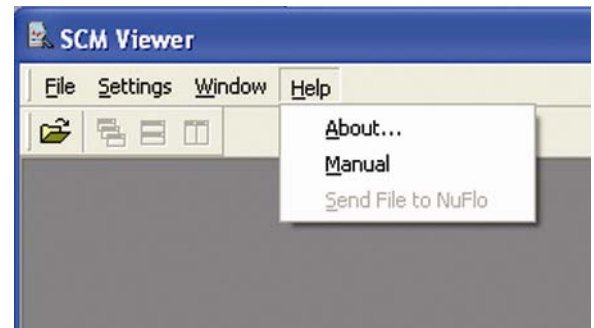
Help

About

Through the About selection, a user can determine the version of SCM Viewer and view the end-user license agreement to which he or she agreed when installing the application.

Manual

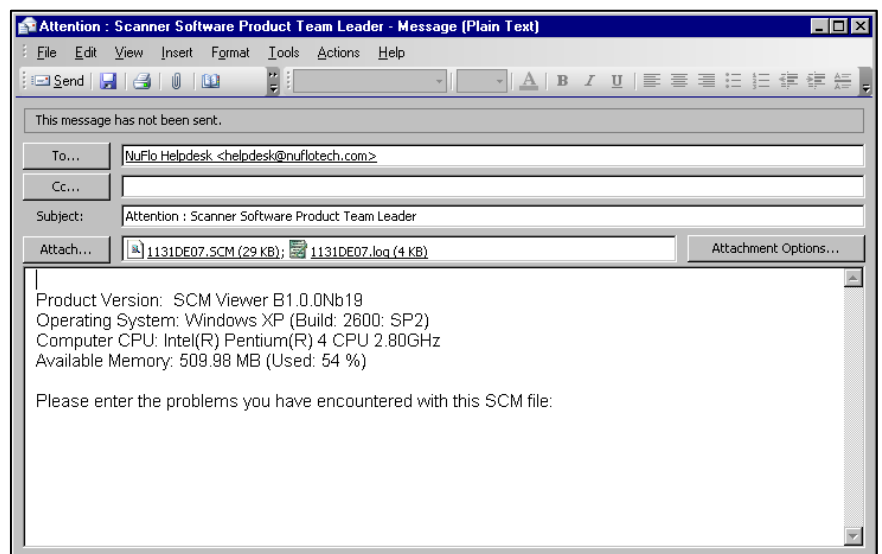
Click on Manual to access an electronic copy of this document.



Send File to NuFlo

The Send File to NuFlo option is a shortcut for seeking technical support, and is active only when a file is open. When this menu item is selected, the default e-mail program composes a message to the NuFlo HelpDesk. Attached to this message will be the SCM file you have open, as well as the log file that is associated with it.

To aid technical support staff in solving the problem, add an explanation of the problem at the end of the message.



Chapter 3: Viewing an SCM File

Opening an SCM File

From the Main screen, select File>Open to view the SCM files available for viewing.

Click on an SCM file to display a summary of file contents in the right column of the screen.

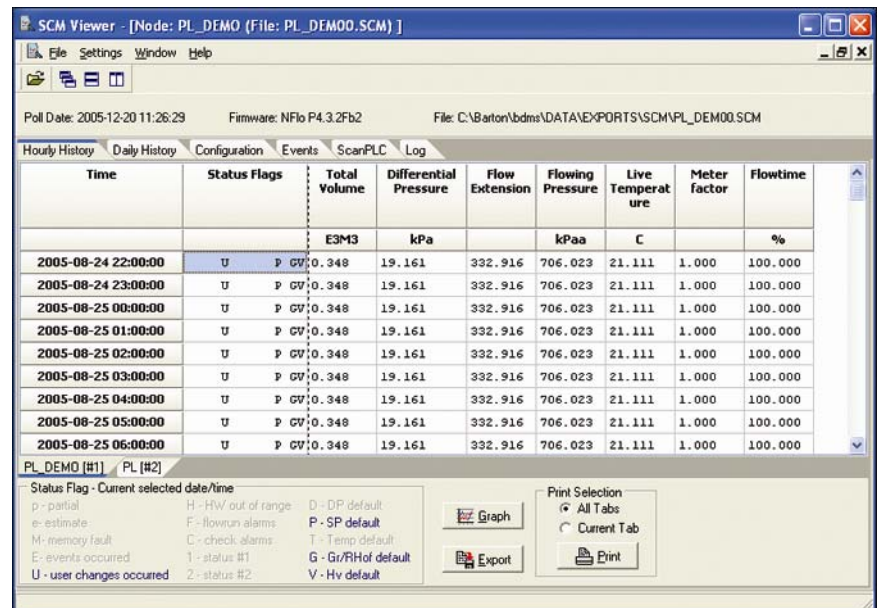
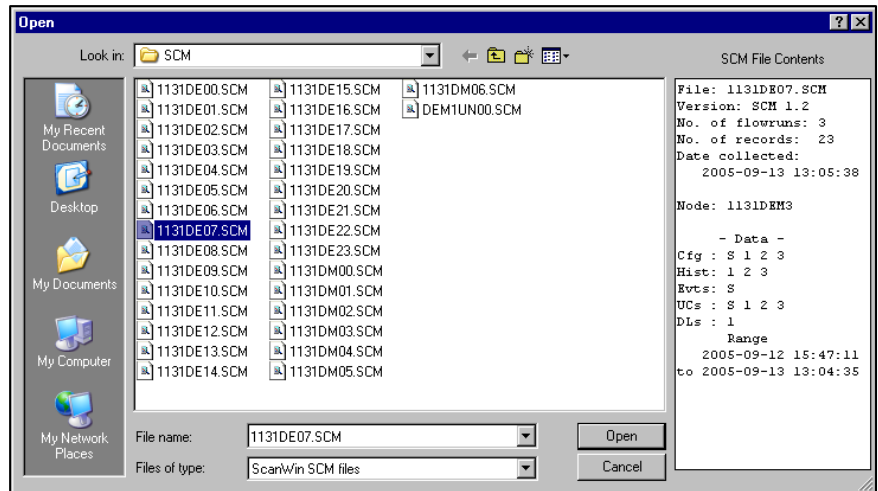
Click the **Open** button to fully display the contents of the file.

The file contents is categorized by data type, with each data type stored under a separate tab (for example, Hourly History, Daily History, Configuration, etc.).

When an SCM file is opened, the data is read from the file and populated under the appropriate tab. As the file loads, the progress is shown on the log tab and entries are added to the log, depending upon the log level. When the file load is complete, the loading progress bar will read “100%” and the Main screen will open with the left tab displayed for viewing. Only tabs that reflect data contained within the SCM file will be displayed.

Above the tab, the following information is displayed:

- Poll Date: the date/time the data was collected from the Scanner
- Firmware: the firmware version of the Scanner from which data was collected
- File: the file path of the file being viewed



Changing Column Width

Hourly History, Daily History, and Configuration data are presented in tabular format. It may be necessary to adjust the default column width to properly view the data in table cells. To change the width of a column, position the cursor on the right border of the header cell in the column you want to change. When the cursor aligns with the border and changes shape, hold down the left mouse button and drag to widen the column. These changes will be saved and will be displayed the next time the application is run.

The screenshot shows the SCM Viewer application window. The title bar reads "SCM Viewer - [Node: PL_DEMO (File: PL_DEMO0.SCM)]". The menu bar includes "File", "Settings", "Window", and "Help". The status bar shows "Poll Date: 2005-12-20 11:26:29", "Firmware: NFlo P4.3.2Fb2", and "File: C:\Barton\bdms\DATA\EXPORTS\SCM\PL_DEMO0.SCM".

The main window has several tabs: "Hourly History", "Daily History", "Configuration", "Events", "ScanPLC", and "Log". The "Hourly History" tab is active, displaying a table with the following columns: "Time", "Status Flags", "Total Volume", "Differential Pressure", "Flow Extension", "Flowing Pressure", "Live Temperature", "Meter factor", and "Flowtime". A red arrow points to the right border of the "Status Flags" header cell.

Time	Status Flags	Total Volume	Differential Pressure	Flow Extension	Flowing Pressure	Live Temperature	Meter factor	Flowtime
		E3M3	kPa		kPaa	C		%
2005-08-24 22:00:00	U	P GW 0.348	19.161	332.916	706.023	21.111	1.000	100.000
2005-08-24 23:00:00	U	P GW 0.348	19.161	332.916	706.023	21.111	1.000	100.000
2005-08-25 00:00:00	U	P GW 0.348	19.161	332.916	706.023	21.111	1.000	100.000
2005-08-25 01:00:00	U	P GW 0.348	19.161	332.916	706.023	21.111	1.000	100.000
2005-08-25 02:00:00	U	P GW 0.348	19.161	332.916	706.023	21.111	1.000	100.000
2005-08-25 03:00:00	U	P GW 0.348	19.161	332.916	706.023	21.111	1.000	100.000
2005-08-25 04:00:00	U	P GW 0.348	19.161	332.916	706.023	21.111	1.000	100.000
2005-08-25 05:00:00	U	P GW 0.348	19.161	332.916	706.023	21.111	1.000	100.000
2005-08-25 06:00:00	U	P GW 0.348	19.161	332.916	706.023	21.111	1.000	100.000

At the bottom of the window, there are two panes. The left pane is titled "Status Flag - Current selected date/time" and contains a legend for status flags: p - partial, e - estimate, M - memory fault, E - events occurred, U - user changes occurred, H - HW out of range, F - flowrun alarms, C - check alarms, 1 - status #1, 2 - status #2, D - DP default, P - SP default, T - Temp default, G - Gr/RH of default, V - Hv default. The right pane is titled "Print Selection" and has radio buttons for "All Tabs" and "Current Tab", along with "Graph" and "Export" buttons.

Hourly / Daily History Tabs

The Hourly History and Daily History tabs show historical data from the SCM file. Sub-tabs allow the user to select the flowrun to be viewed. The sub-tabs are labeled with the flowrun name and [number]—for example, RUN001(#1).

The columns shown for each flowrun depend upon the data contained within the SCM file and the columns that the user has selected for display. All spreadsheets show the date/time in the first column and the status flags for the associated date in the second column. To view what status flags are associated with each date/time, click on a cell within that row. Explanations of associated status flags are highlighted at the bottom of the screen.

Buttons at the bottom of the screen allow the user to view the data in a graph, to export the data to a file, or to print one or all tabs. Right-clicking in a cell within the table displays a dropdown list with similar options, plus options to copy a selection or an entire sheet to the clipboard for pasting in another application.

Time	Status Flags	Total Volume		Uncorrected Pulse Total	Flowing Pressure	Live Temperature	Meter factor	Hourly Flowtime
		MCF	MMBTU					
2005-10-29 13:00:00	PTGV	4785985	4881705	2358125	31	78	1	100
2005-10-29 14:00:00	PTGV	4786368	4882095	2358313	31	78	1	100
2005-10-29 15:00:00	PTGV	4786368	4882095	2358313	31	78	1	100
2005-10-29 16:00:00	PTGV	4786368	4882095	2358313	31	78	1	100
2005-10-29 17:00:00	PTGV	4786751	4882486	2358502	31	78	1	100
2005-10-29 18:00:00	PTGV	4785985	4881705	2358125	31	78	1	100
2005-10-29 19:00:00	PTGV	4786751	4882486	2358502	31	78	1	100
2005-10-29 20:00:00	PTGV	4785985	4881705	2358125	31	78	1	100
2005-10-29 21:00:00	PTGV	4787698	4883451	2358969	31	78	1	100
2005-10-29 22:00:00	PTGV	4785038	4880739	2357658	31	78	1	100
2005-10-29 23:00:00	PTGV	4786751	4882486	2358502	31	78	1	100

Time	Status Flags	Total Volume		Differential Pressure	Flow Extension	Flowing Pressure	Live Temperature	Meter factor	Flowtime
		E3M3	kPa						
2005-08-24 22:00:00	U P GV	0.348	19.161	332.916	706.023	21.111	1.000	100.000	
2005-08-24 23:00:00	U P GV	0.348	19.161	332.916	706.023	21.111	1.000	100.000	
2005-08-25 00:00:00	U P GV	0.348	19.161	332.916	706.023	21.111	1.000	100.000	
2005-08-25 01:00:00	U P GV	0.348	19.161	332.916	706.023	21.111	1.000	100.000	
2005-08-25 02:00:00	U P GV	0.348	19.161	332.916	706.023	21.111	1.000	100.000	
2005-08-25 03:00:00	U P			332.916	706.023	21.111	1.000	100.000	
2005-08-25 04:00:00	U P			332.916	706.023	21.111	1.000	100.000	
2005-08-25 05:00:00	U P			332.916	706.023	21.111	1.000	100.000	
2005-08-25 06:00:00	U P			332.916	706.023	21.111	1.000	100.000	

Graph

To view data from the active flowrun as a graph, click on the Graph button at the bottom of the main SCM Viewer screen. The data shown is dependent upon the data within the spreadsheet and any user-configurable options selected. Since the graph appears in a window that is separate from the main SCM Viewer screen, users can tab through graphs of associated flowruns by keeping the graph dialog open and selecting a different flowrun tab from the Main screen.

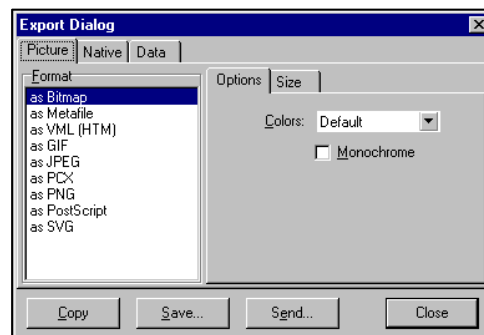
The parameter represented by the y-axis scale (on the left) is determined by the selection in the “Scale to use” dropdown menu above the graph.

The user selects the types of data to be displayed in the graph by checking (or unchecking) the checkboxes in the legend below the graph.

The range of data viewed on the screen can be changed by specifying a Start date and an End date at the top of the screen, or by using the zoom buttons. Regardless of the view displayed, the “Reset” button at the top of the screen will restore the default range view.

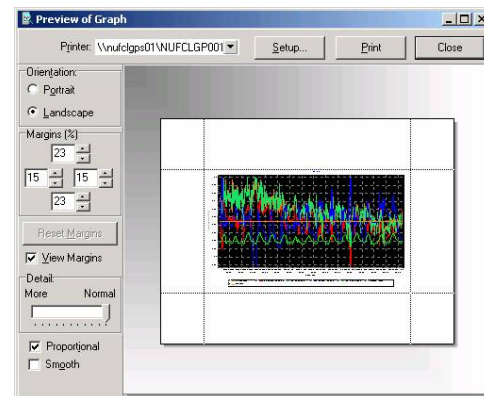
Export from Graph Window

The “Export” button at the bottom of the screen allows the user to copy, save, or email the graph in a variety of formats. To export the graph, click Export, select the format desired, select a color setting, and press the appropriate button—Copy, Save, or Send—at the bottom of the dialog screen. Click “Close” to return to the Graph screen.



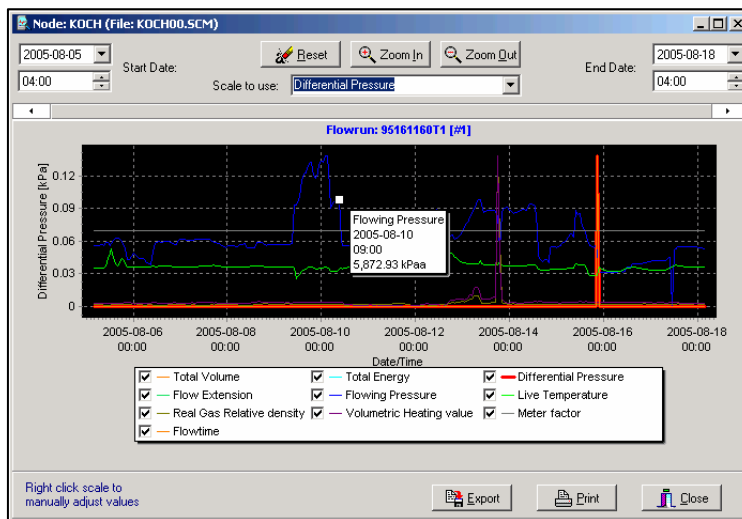
Print from Graph Window

The “Print” button at the bottom of the screen allows the user to preview the graphical display before it is printed. To print a graph, click Print in the graph window, specify the printer, choose file setup options, orientation, margins, etc., and click Print in the Preview of Graph window. Click “Close” to return to the Graph screen.



Close

The “Close” button at the bottom of the graph screen closes the graph dialog.



Export from Hourly / Daily History Tab

Clicking on the Export button at the bottom of the main SCM Viewer screen exports all the data from the flowruns in a variety of file formats including Excel, comma delimited, text, HTML, and Microsoft Word.

Print from Hourly / Daily History Tab

Clicking on the Print button at the bottom of the main SCM Viewer screen sends data to a selected printer. Radio buttons located immediately above the Print button give the user the option of printing from only the selected flowrun (Current Tab) or all the flowruns included in the SCM file (All Tabs).

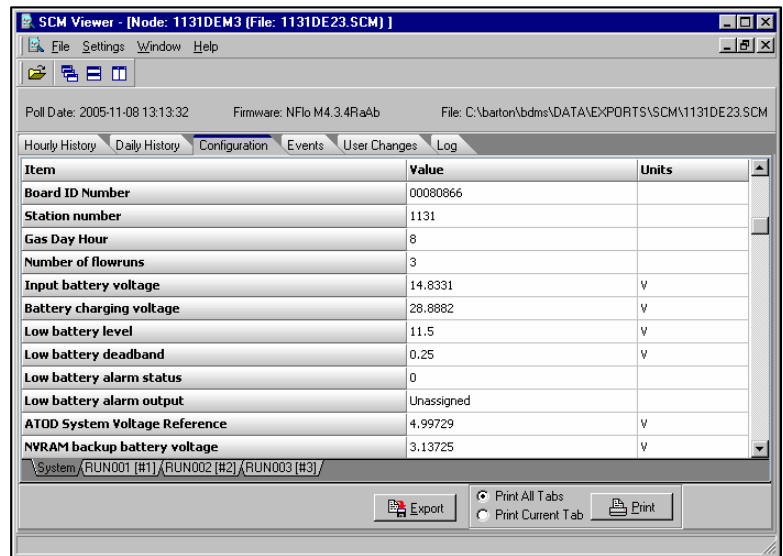


Configuration Tab

The Configuration tab shows the configuration data from the SCM file. Sub-tabs allow the user to select the flowrun to be viewed, and a System sub-tab shows configuration data specific to the Scanner as a whole.

Buttons at the bottom of the screen allow the user to export the data to a file, or to print one or all tabs.

Right-clicking in a cell within the table displays a dropdown list with similar options, plus options to copy a selection or an entire sheet to the clipboard for pasting in another application.



Export

Clicking on the Export button at the bottom of the main SCM Viewer screen exports all the data from the flowruns in a variety of file formats including Excel, comma delimited, text, HTML and Microsoft Word.

Print

Clicking on the Print button at the bottom of the main SCM Viewer screen sends data to a selected printer. Radio buttons located immediately above the Print button give the user the option of printing from only the selected flowrun (Current Tab) or all the flowruns included in the SCM file (All Tabs).



Events

The Events tab shows the events data from the SCM file. Sub-tabs allow the user to select the flowrun to be viewed, and a System sub-tab shows event data specific to the Scanner as a whole.

Buttons at the bottom of the screen allow the user to export data to a file, or to print one or all tabs.

Right-clicking in a cell within the table displays a dropdown list with similar options, plus options to copy a selection or an entire sheet to the clipboard for pasting in another application.

Export All / Export

Clicking on the Export All button at the bottom of the main SCM Viewer screen saves all events and user changes in a single file, ordered by number. Clicking on the Export buttons saves only events to the SCM file, ordered by number. The data is saved in a Word document format.

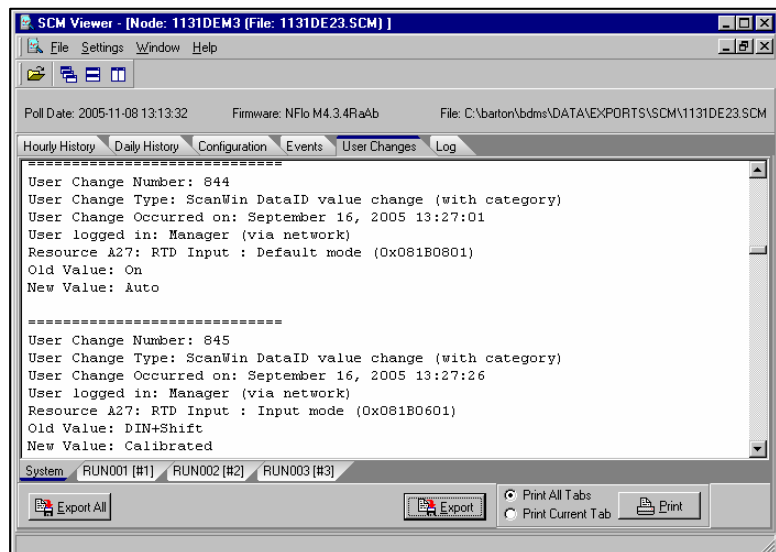
Print

Clicking on the Print button at the bottom of the main SCM Viewer screen prints the data to a selected printer. Radio buttons located immediately to the left of the Print button give the user the option of printing from only the selected flowrun (Print Current Tab) or all the flowruns included in the SCM file (Print All Tabs).

User Changes

The User Changes tab shows the user changes data from the SCM file. Sub-tabs allow the user to select the flowrun to be viewed, and a System sub-tab shows user change data specific to the Scanner as a whole.

Buttons at the bottom of the screen allow the user to export data to a file, or to print one or all tabs. Right-clicking offers the user the same options as the buttons plus the ability to copy a selection to the clipboard.



Export All / Export

Clicking on the Export All button at the bottom of the main SCM Viewer screen saves all events and user changes in a single file, ordered by number. Clicking on the Export buttons saves only user changes to the SCM file, ordered by number. The data is saved in a Word document format.

Print

Clicking on the Print button at the bottom of the main SCM Viewer screen prints the data to a selected printer. Radio buttons located immediately to the left of the Print button give the user the option of printing from only the selected flowrun (Print Current Tab) or all the flowruns included in the SCM file (Print All Tabs).

ScanPLC

If ScanPLC data exists in the SCM file, a ScanPLC tab will be displayed.

The format for these events takes the information from a plc_evt.fmt initialization file.

Buttons at the bottom of the screen allow the user to export data, to generate a report in Word format, or to print one or all tabs. Right-clicking offers the user the same options as the buttons plus the ability to copy a selection to the clipboard.

Export

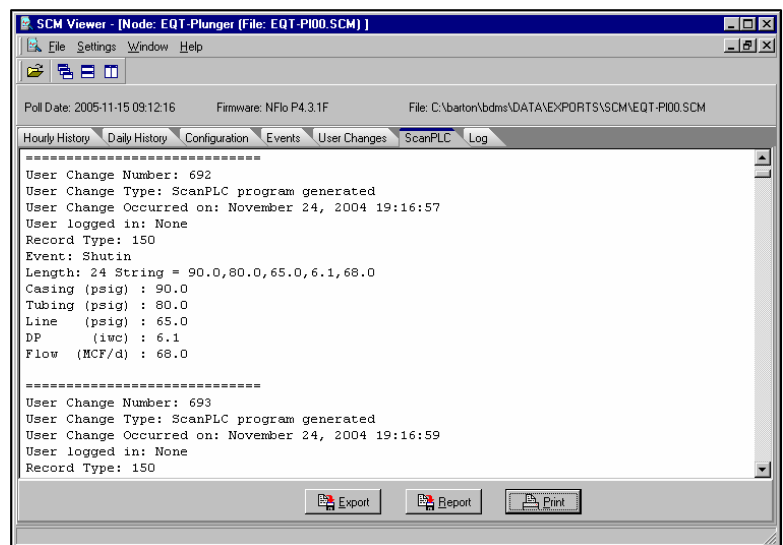
Clicking on the Export button at the bottom of the main SCM Viewer screen saves all data in a comma delimited format.

Report

Clicking on the Report button at the bottom of the main SCM Viewer screen saves all data in Word document format.

Print

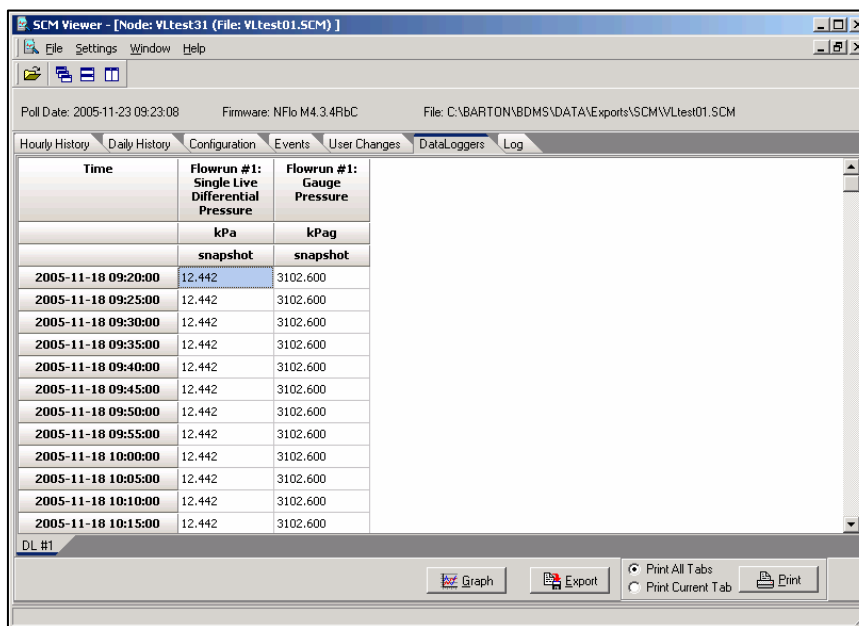
Clicking on the Print button at the bottom of the main SCM Viewer screen prints all data to a selected printer.



DataLoggers Tab

Data logs can be used to log variables that are not included in the flowrun hourly logs or to log data at intervals other than hourly and daily. Data logs are useful as troubleshooting tools.

The DataLoggers tab is very similar to the Hourly and Daily History tabs. Sub-tabs allow the user to select the datalogger to be viewed. The sub-tabs are labeled with the datalogger number—for example, DL #1. Clicking on a sub-tab allows the user to view the associated historical data for that datalogger.



The columns shown for each datalogger depend upon the data contained within the SCM file.

Buttons at the bottom of the screen allow the user to view the data in a graph, to export the data to a file, or to print one or all tabs. Right-clicking in a cell within the table displays a dropdown list with similar options, plus options to copy a selection or an entire sheet to the clipboard for pasting in another application.

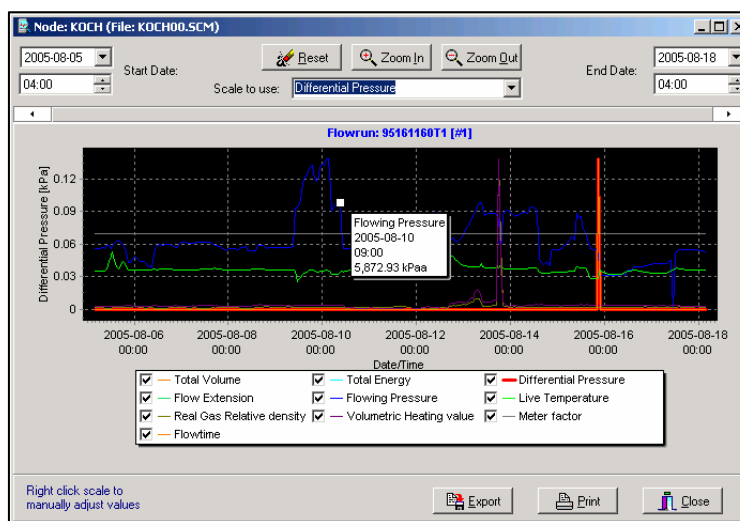
Graph

To view data from the active datalogger as a graph, click on the Graph button at the bottom of the main SCM Viewer screen. The data shown is dependent upon the data within the spreadsheet and any user-configurable options selected. Since the graph appears in a window that is separate from the main SCM Viewer screen, users can tab through graphs of associated dataloggers by keeping the graph dialog open and selecting a different datalogger tab from the Main screen.

The parameter represented by the y-axis scale (on the left) is determined by the selection in the “Scale to use” dropdown menu above the graph.

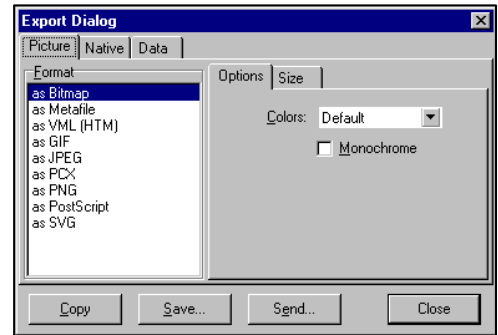
The user selects the types of data to be displayed in the graph by checking (or unchecking) the checkboxes in the legend below the graph.

The range of data viewed on the screen can be changed by specifying a Start date and an End date at the top of the screen, or by using the zoom buttons. Regardless of the view displayed, the “Reset” button at the top of the screen will restore the default range view.



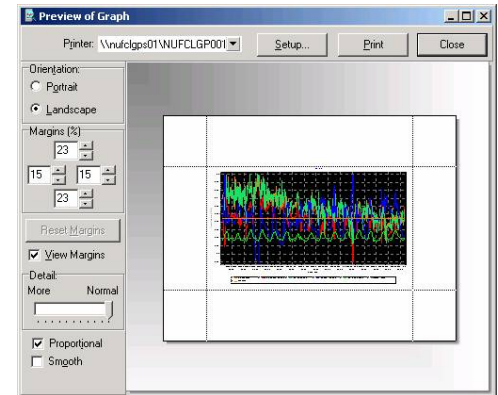
Export from Graph Window

The “Export” button at the bottom of the screen allows the user to copy, save, or email the graph in a variety of formats. To export the graph, click Export, select the format desired, select a color setting, and press the appropriate button—Copy, Save, or Send—at the bottom of the dialog screen. Click “Close” to return to the Graph screen.



Print from Graph Window

The “Print” button at the bottom of the screen allows the user to preview the graphical display before it is printed. To print a graph, click Print in the graph window, specify the printer, choose file setup options, orientation, margins, etc., and click Print in the TeeChart Print Preview window. Click “Close” to return to the Graph screen.

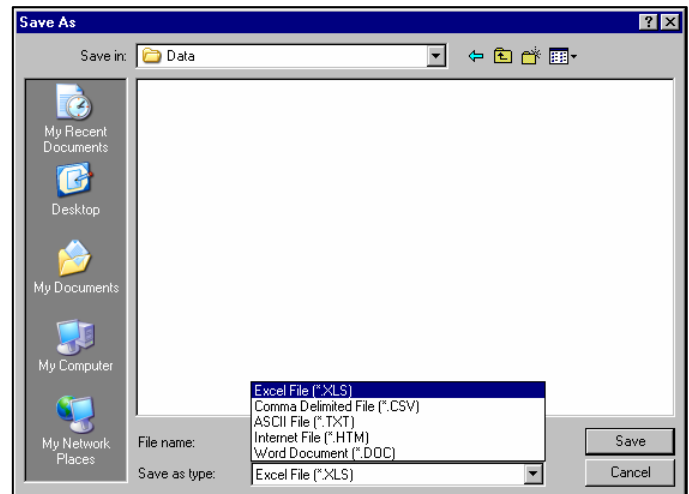


Close

The “Close” button at the bottom of the graph screen closes the graph dialog.

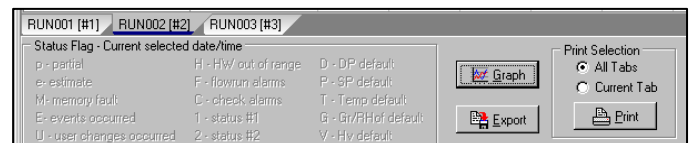
Export from DataLogger Tab

Clicking on the Export button at the bottom of the main SCM Viewer screen exports all the data from the dataloggers in a variety of file formats including Excel, comma delimited, text, HTML and Word document.



Print from DataLoggers Tab

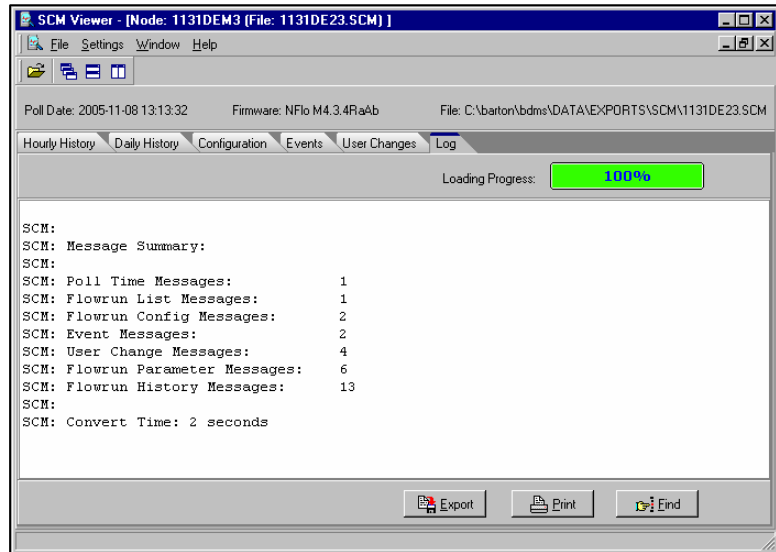
Clicking on the Print button at the bottom of the main SCM Viewer screen sends data to a selected printer. Radio buttons located immediately above the Print button give the user the option of printing from only the selected datalogger (Current Tab) or all the dataloggers included in the SCM file (All Tabs).



Log

The Log tab shows the information that is logged as the file is loaded. The amount of information depends upon the log level. If the file could not be loaded successfully, an explanation will appear within the log.

Right-clicking the log data pulls up a menu that has the same options as the buttons on this page and the ability to copy any selected text to the clipboard to be pasted in another application.



Export

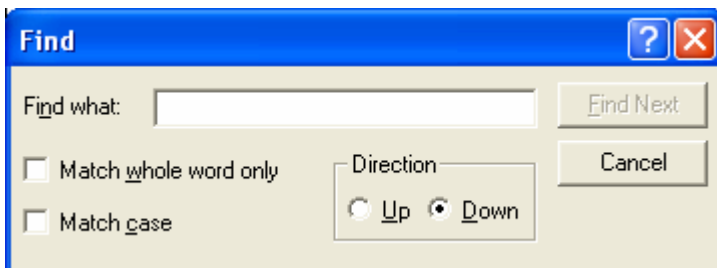
Clicking on the Export button at the bottom of the main SCM Viewer screen exports the contents of the log into an HTML file.

Print

Clicking on the Print button at the bottom of the main SCM Viewer screen sends log data to a selected printer.

Find

Clicking this button allows the user to search for specified text within the logged information.



Chapter 4: Troubleshooting Information

Troubleshooting Information

This chapter is dedicated to identifying common errors and problems encountered through normal use of this product. This information is constantly being updated as new items are found. If your problem is not listed, contact the NuFlo Scanner *HelpDesk* at 1-877-805-7226 or (403) 291-4814.

Problem: Unable to Install SCM Viewer

Symptom: The operating system should provide a message similar to the following:



Cause: Attempting the installation on a NT/2000/XP machine as a user without administrator rights. This error commonly occurs when the machine is part of a Novell network.

Solution: Log into the computer as a user with Administrator rights and re-run the install.

WARRANTY - LIMITATION OF LIABILITY: Seller warrants only title to the products, software, supplies and materials and that, except as to software, the same are free from defects in workmanship and materials for a period of one (1) year from the date of delivery. Seller does not warrant that software is free from error or that software will run in an uninterrupted fashion. Seller provides all software "as is". THERE ARE NO WARRANTIES, EXPRESS OR IMPLIED, OF MERCHANTABILITY, FITNESS OR OTHERWISE WHICH EXTEND BEYOND THOSE STATED IN THE IMMEDIATELY PRECEDING SENTENCE. Seller's liability and Buyer's exclusive remedy in any case of action (whether in contract, tort, breach of warranty or otherwise) arising out of the sale or use of any products, software, supplies, or materials is expressly limited to the replacement of such products, software, supplies, or materials on their return to Seller or, at Seller's option, to the allowance to the customer of credit for the cost of such items. In no event shall Seller be liable for special, incidental, indirect, punitive or consequential damages. Seller does not warrant in any way products, software, supplies and materials not manufactured by Seller, and such will be sold only with the warranties that are given by the manufacturer thereof. Seller will pass only through to its purchaser of such items the warranty granted to it by the manufacturer.

 **NuFlo Measurement Systems**
A NuFlo Technologies Company

NuFlo Measurement Systems
14450 John F. Kennedy Blvd. Houston, TX 77032
281.582.9500 www.nuflotech.com

For technical support in North America:
1.800.654.3760 nuflotech@nuflotech.com

Canada
877.891.6540
helpdesk@nuflotech.com

Singapore
65.6737.0444
singapore@nuflotech.com

Bognor Regis, UK
44.1243.826741
uk@nuflotech.com