



CX905 6" & CX906 8" BENCH GRINDERS USER MANUAL

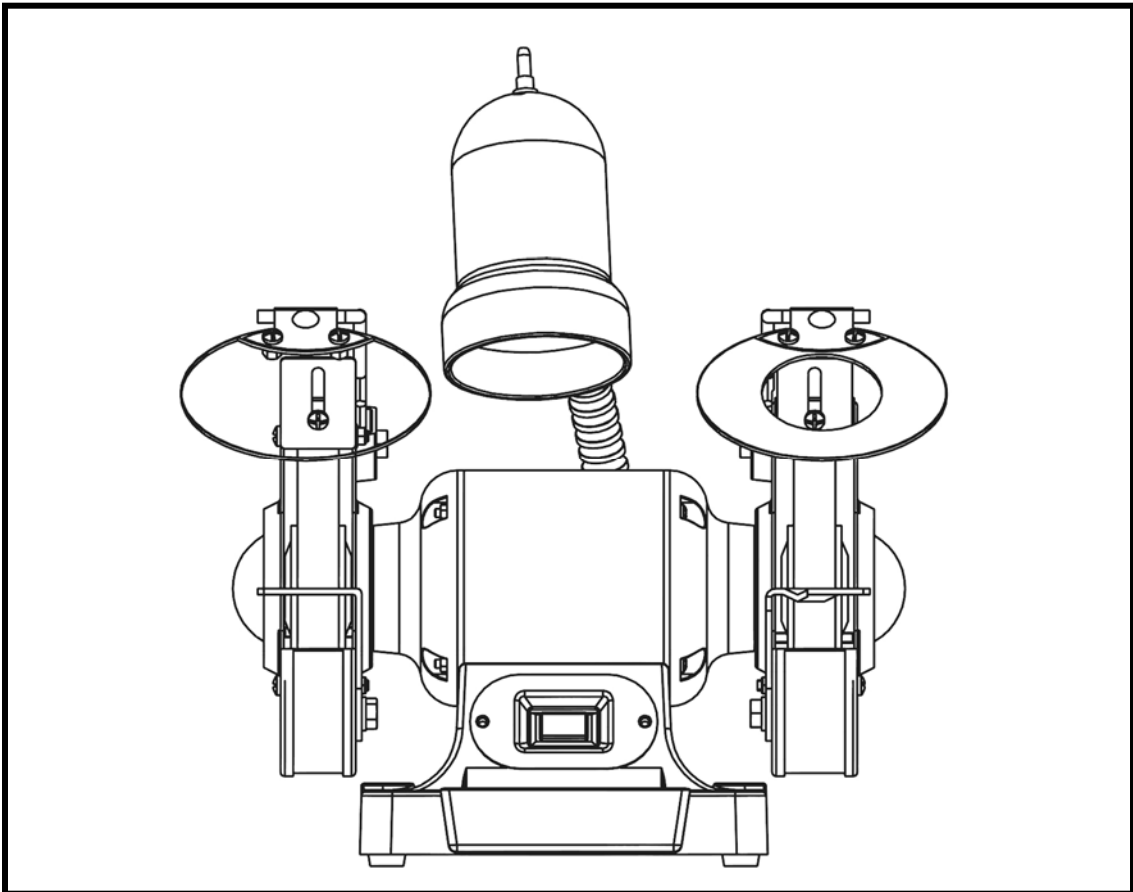


TABLE OF CONTENTS

General Safety Instructions for Machines	3
Specific Safety Instructions	4
CX905 & CX906 Features	5
Physical Features	6
Proper Grounding	7
Un-Packing	8
Inventory	8
Mounting	8
Assembly	9
Spark Deflector	9
Tool Rests.....	9
Test Run	10
Operation	10
Grinding Wheel Inspection.....	11
Grinding Wheel Replacement	11
Wheel Dressing.....	12
Work Light Bulb Replacement	12
Maintenance	12
CX905 Parts Breakdown.....	13
CX905 Parts List.....	14
CX906 Parts Breakdown.....	15
CX905 Parts List.....	16
Warranty	17

GENERAL SAFETY INSTRUCTIONS FOR MACHINES

Extreme caution should be used when operating all power tools. Know your power tool, be familiar with its operation, read through the owner's manual and practice safe usage procedures at all times.

- ❖ **ALWAYS** read and understand the user manual before operating the machine.
- ❖ **CONNECT** your machine ONLY to the matched and specific power source.
- ❖ **ALWAYS** wear safety glasses respirators, hearing protection and safety shoes, when operating your machine.
- ❖ **DO NOT** wears loose clothing or jewelry when operating your machine. Wear protective hair covering.
- ❖ **A SAFE ENVIRONMENT** is important. Keep the area free of dust, dirt and other debris in the immediate vicinity of your machine.
- ❖ **BE ALERT! DO NOT** use prescription or other drugs that may affect your ability or judgment to safely use your machine.
- ❖ **DISCONNECT** the power source when changing drill bits, hollow chisels, router bits, shaper heads, blades, knives or making other adjustments or repairs.
- ❖ **NEVER** leave a tool unattended while it is in operation.
- ❖ **NEVER** allow unsupervised or untrained personnel to operate the machine
- ❖ **NEVER** reach over the table when the tool is in operation.
- ❖ **ALWAYS** keep blades, knives and bits sharpened and properly aligned.
- ❖ **ALL OPERATIONS MUST BE** performed with the guards in place to ensure safety.
- ❖ **ALWAYS** use push sticks and feather boards to safely feed your work through the machine.
- ❖ **ALWAYS** make sure that any tools used for adjustments are removed before operating the machine.
- ❖ **ALWAYS** keep bystanders safely away while the machine is in operation.
- ❖ **NEVER** attempt to remove jammed cutoff pieces until the blade has come to a full stop.

SPECIFIC SAFETY INSTRUCTIONS FOR GRINDERS

- ❖ **ALWAYS** read and understand the user manual before operating the grinder.
- ❖ **MAKE SURE** you are wearing safety glasses while operating the grinder. The small particles becoming airborne during operation can seriously damage your eyes.
- ❖ **ALWAYS** wear a dust mask or a respirator while grinding. The dust produced during operation can lead to serious respiratory problems if inhaled.
- ❖ **MAKE SURE** before making any adjustments, servicing or installing parts, the switch is in the "OFF" position, and the cord is un-plugged from the power source.
- ❖ **MAKE SURE** the RPM of the wheel you are installing on the grinder is equal or higher than the speed of the grinder. Operating wheels at a higher speed than rated for may cause the wheel to lay apart, fly or break and may cause accident.
- ❖ **MAKE SURE** to keep your hands at a safe distance from the wheel.
- ❖ **NEVER LEAVE** the machine unattended while it is running.
- ❖ **MAKE SURE** to do a ring test on the grinding wheels before installation. Wheels that do not pass the test are not safe to use. See "page-11 for details.
- ❖ **ALWAYS** stand to the side of the grinder when turning it ON and let the wheel reach full speed. Stand at least one minute to the side of the grinder after startup. A damaged wheel can break apart and fly shortly after starting the grinder.
- ❖ **DO NOT** grind on the side of the wheel, unless the wheel is rated for side grinding.
- ❖ **DO NOT** over-tighten the grinding wheel. Excessive tightening can cause the wheel to crack during operation.
- ❖ **MAKE SURE** you have read and understood all the safety instructions in the manual and you are familiar with your grinder, before operating it. If you fail to follow the instructions given in this user manual, serious injury could occur.

WARNING!

The safety instructions given above can not be complete because the environment in every shop is different. Always consider safety first as it applies to your individual working conditions.



CX905 & CX906 FEATURES

As part of the growing line of Craftex woodworking equipment, we are proud to offer the CX905 6" and CX906 8" Bench Grinders. By following the instructions and procedures laid out in this user manual, you will receive years of excellent service and satisfaction. The CX905 and CX906 are a professional tools and like all power tools, proper care and safety procedures should be adhered to.

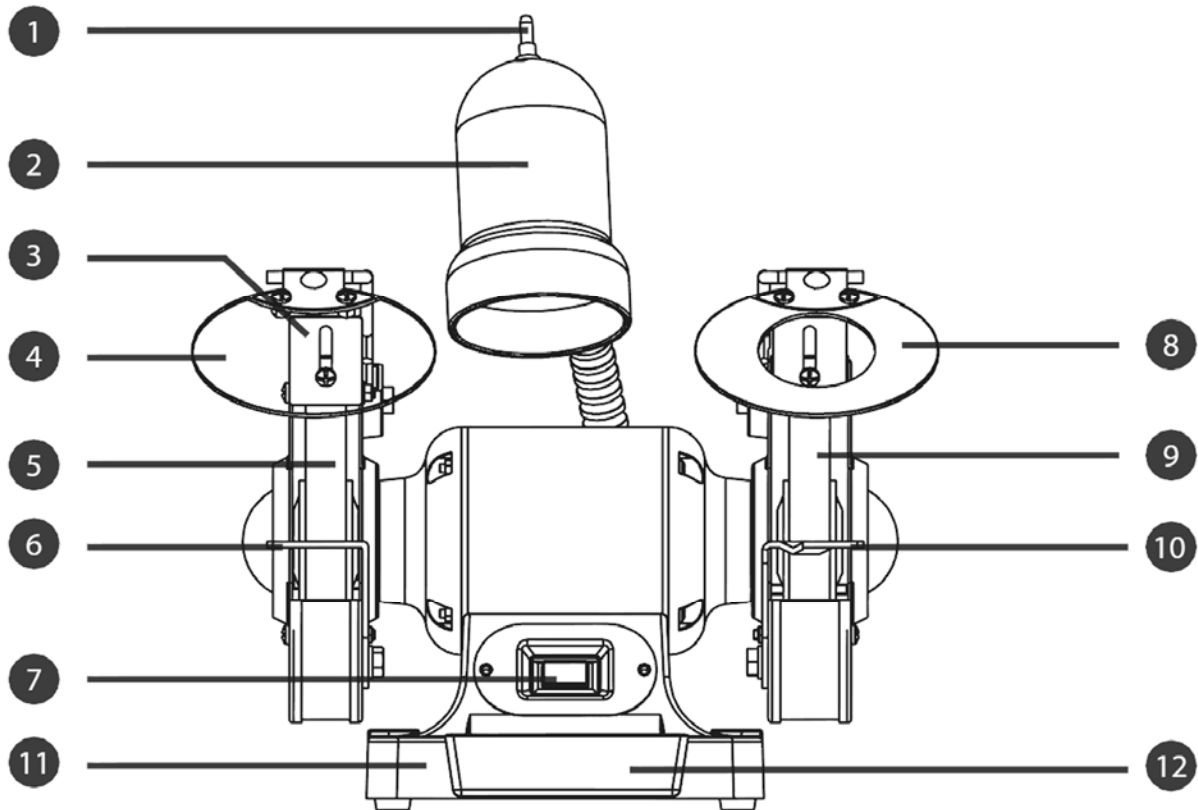
CX905 - 6" BENCH GRINDER

Motor	1/2 HP, 120V, 60 Hz
Amps	2.8 Amp
No. Load Speed.....	3450 RPM
Grinding Wheel Diameter	6"
Grinding Wheel Material	Aluminum Oxide
Grinding Wheels Grit	36 and 60
Light Bulb.....	120V, 40W(Max.)
Weight	18 lbs (8.2 Kg)
Warranty	3 Year

CX906 - 8" BENCH GRINDER

Motor	3/4 HP, 120V, 60 Hz
Amps	4.8 Amp
No. Load Speed.....	3450 RPM
Grinding Wheel Diameter	8"
Grinding Wheel Material	Aluminum Oxide
Grinding Wheels Grit	36 and 60
Light Bulb.....	120V, 40W(Max.)
Weight	29 lbs (13.2 Kg)
Warranty	3 Year

CX905 & CX906 PHYSICAL FEATURES



- | | |
|-----------------------|--------------------------|
| 1. Lamp ON/OFF Switch | 7. Switch |
| 2. Lamp | 8. Magnifying Eye Shield |
| 3. Spark Deflector | 9. Grinding Wheel #60 |
| 4. Plain Eye Shield | 10. Right Work Rest |
| 5. Grinding Wheel #36 | 11. Base |
| 6. Left Work Rest | 12. Water Tray |

PROPER GROUNDING

Grounding provides a path of least resistance for electric current to reduce the risk of electric shock.

Make sure the cord is plugged into a properly installed and grounded power outlet. To prevent electrical hazards, have a qualified electrician ensure that the line is properly wired.

Make sure that the grinder is connected to an outlet having the same configuration as the plug. If an adaptor plug is used, it must be attached to the metal screw of the receptacle.

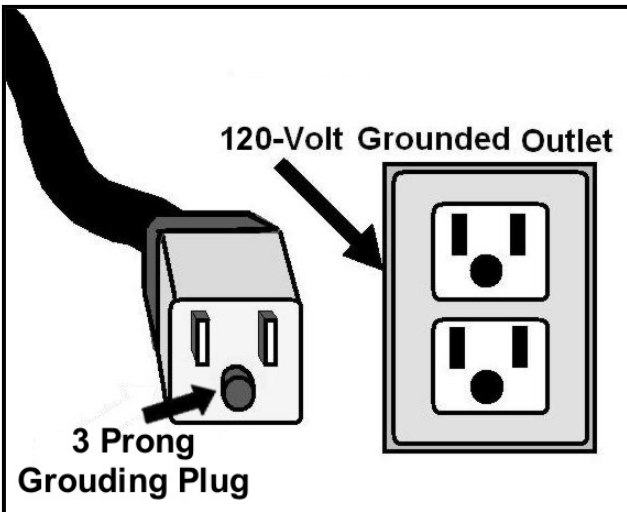


Figure-1 120-volt outlet for CX905/CX906

It is strongly recommended not to use extension cords with your grinder. Always try to position your machine close to the power source so that you do not need to use extension cords.

If you really find it necessary to use an extension cord, make sure the extension cord does not exceed 50-feet in length and the cord is 12-gauge to prevent motor damage.

WARNING!

Improper connection of the equipment-grounding conductor can result in a risk of electric shock. Check with a qualified electrician if you are in doubt as to whether the outlet is properly grounded.

UNPACKING

The grinder is properly packaged and shipped complete in a carton for safe transportation. When unpacking, carefully inspect the carton to ensure the grinder and the parts are in good condition and that nothing has been damaged during transit.

While doing inventory, if you can not find any part, check if the part is already installed on the machine.

INVENTORY

The grinder consists of the following:

CONTENT	QTY
Grinder.....	1
Grinding Wheel 36-Grit.....	1
Grinding Wheel 60-Grit.....	1
Left Work Rest.....	1
Right Work Rest.....	1
Magnifying Eye Shield.....	1
Plain Eye Shield.....	1
Left Eye Shield Support.....	1
Right Eyes Shield Support.....	1
Bracket.....	2
Flat Washer.....	2
Hex Bolt M6 x 14.....	2
Spark Deflector.....	2
Star Head Screw & Flat Washer.....	2
Flat Washer.....	4
Hex Bolt M8 x 8.....	4

MOUNTING

The grinder features four pre-drilled holes on its base which allow mounting it to the workbench.

There are two ways to mount the grinder onto the workbench; through mount and direct mount.

"Through Mount" is the strongest mounting option where the holes are drilled all the way through the workbench. Hex bolts, washers and hex nuts are used to secure the grinder to the workbench. See figure-2.

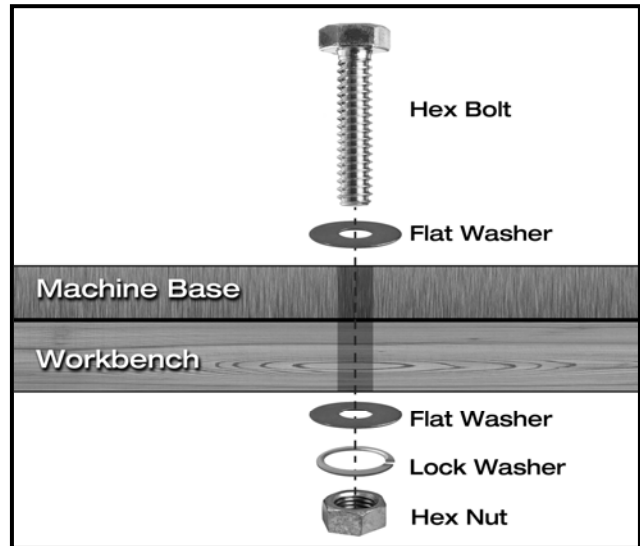


Figure-2 Through mount

"Direct Mount" is to simply secure the grinder to the workbench using lag screws. See figure-3.

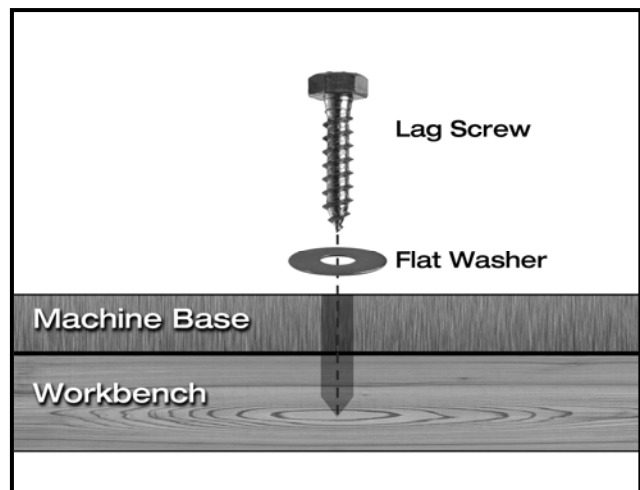


Figure-3 Direct mount

Place the grinder on the workbench and use the holes on the base as a guide for drilling and attaching the shear to the workbench.

ASSEMBLY

Attach the eye shields to the mounting rods. Now attach the mounting rods to the wheel guards using hex bolts and washers provided. See figure-2.

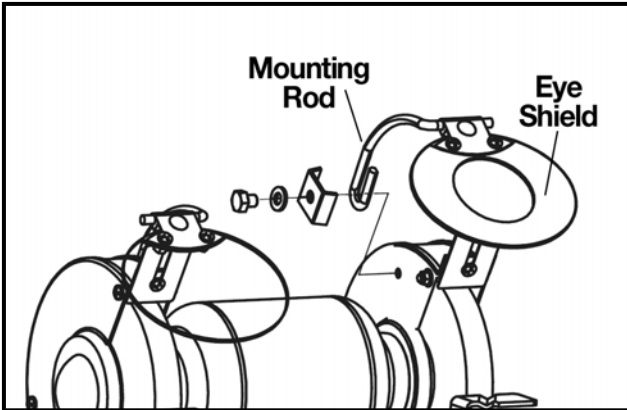


Figure-2 Installing the eye shield

SPARK DEFLECTOR

The CX905/CX906 comes with spark deflectors installed on each wheel guard.

The spark deflector prevents sparks from showering the top of the work-piece. The spark deflector should be adjusted so that it is within a distance of 1/8" - 1/4" with the grinding wheel.

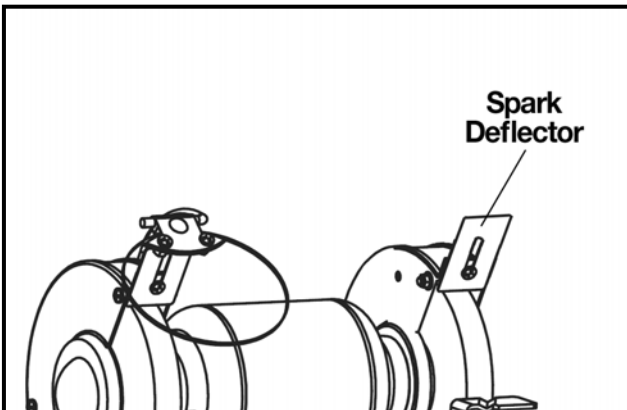


Figure-3 Spark deflector

TOOL REST

The tool rest supports the work-piece when grinding hence it is important to adjust the tool rest correctly.

The tool rest should be positioned at a distance of 1/16" - 1/8" from the grinding wheel. As the grinding wheel wears, and the gap between the grinding wheel and tool rest increases, adjust the tool rest closer to the grinding wheel.

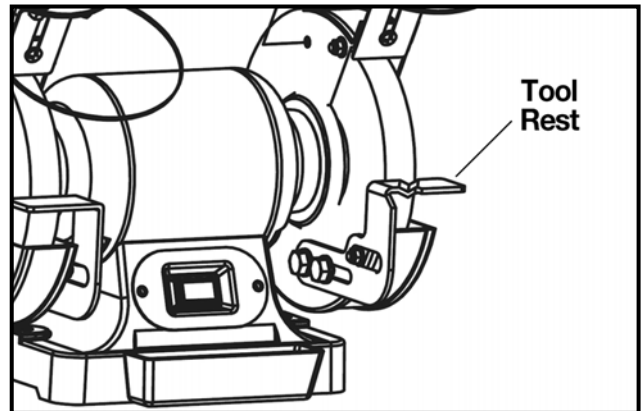


Figure-4 Tool rest

WARNING!

Do not grind without the tool rest in place. The grinding wheel should be positioned properly in place before operation. Free hand grinding or large gap between the tool rest and grinding wheel increases the risk of kick back.

TEST RUN

Once you have assembled the machine and verified that grinding wheel is secured, it is then time to do a test run and see that the machine powers up and runs properly.

To rest run the grinder:

Remove and clear away all the tools and objects used for assembling the machine.

Make sure you have read and understood the instructions given in this user manual and the machine is set up properly.

Connect the cord to the power source.

Stand to the side of the grinding wheel and turn the machine ON.

The grinder should run smoothly with little or no vibration.

During the test run if there is any unusual noise or vibration, disconnect the machine from the power source immediately. Check all the parts you have assembled, once again and try to find out the problem.

Turn the grinder OFF.

WARNING!

Do not make any adjustments while the machine is running. Turn the machine OFF and un-plug from the power source before making any adjustments. Failure to do so may cause serious personal injury.

OPERATION

In this section of the manual we are providing you with the basic understanding of the grinding operation on this machine.

WARNING!

Always wear safety glasses or a face shield and a respirator when operating this machine. Failure to do so could result in serious damage to your eyes and lungs.

To operate the CX905/906.

Check the work-piece and make sure it is suitable for grinding and select the correct grinding wheel for the work-piece you want to grind.

Inspect the grinding wheel and make sure it passes the "ring-test". See page-11.

Adjust the tool rest so that it is perpendicular to the grinding wheel and the gap is 1/16" - 1/8"

Adjust the spark deflector so that the gap is 1/8" - 1/4".

Make sure eye shields are in position.

Wear safety goggles or face shield and a respirator and stand to the side of the grinding wheel.

Connect the cord to the power source and turn the switch to ON position.

Allow the grinding wheel to reach its full speed and gently feed the work-piece into the grinding wheel.

Keep the work-piece moving across the face of the grinding wheel. Grinding

continuously on the same spot on the wheel will cause grooves to be worn into the wheel. The wheel may crack or become damaged more easily, and grinding of the other objects will be difficult.

If the work-piece becomes hot, dip it into the water or oil to cool it preventing surface hardening or temper loss.

If the surface of the grinding wheel is no longer round, the wheel should be reshaped using a dressing tool or replaced.

GRINDING WHEEL INSPECTION

The CC905/CX906 comes with a #36 grit and a #60 grit, 6¹/₈” diameter aluminum oxide grinding wheel. The grinding wheel should be inspected properly before installation.

Clean the dust and/or dirt from the surface of the wheel and inspect it for any cracks, dents, chips, or any kind of external damage.

To inspect the wheel for any internal damages:

Hold the wheel up with a finger through the hole located in the middle of the wheel and tap it using a wooden mallet or a light non metallic object as shown in figure-5.

WARNING!

Tapping the wheel with heavy or metallic objects can damage the grinding wheel.

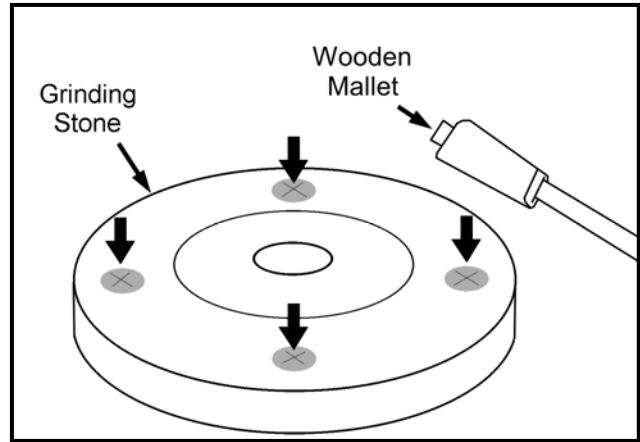


Figure-5 Tapping locations on the grinding stone when inspecting for internal damage

GRINDING WHEEL REPLACEMENT

To replace the grinding wheel:

Make sure the switch is in the OFF position and the cord is disconnected from the power source.

Loosen the screws securing the wheel guard and remove the wheel guard to expose the wheel.

Hold the wheel with one hand and loosen the nut shown in figure-6 securing the grinding wheel with the other.

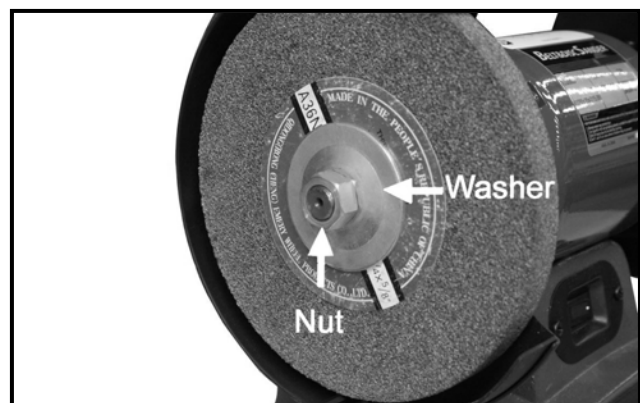


Figure-6 Loosening the nut securing the grinding wheel

Remove the nut, washer, and grinding wheel and replace the wheel with a new one.

Make sure to inspect the new grinding wheel properly before installation.

WHEEL DRESSING

When the grinding wheel will becomes loaded and dull or the diameter of the grinding wheel is not longer round, the wheel should be reshaped using a dressing tool.

Turn the grinder ON.

Position the wheel dresser on the tool rest.

Slowly move the dressing wheel towards the grinding wheel maintaining slight pressure until you see a clear grinding surface on the wheel.

Turn OFF the grinder.

Adjust the tool rest and the spark deflector as instructed on page-9.

WARNING!

Do not grind without the tool rest in place. The grinding wheel should be positioned properly in place before operation. Free hand grinding or large gap between the tool rest and grinding wheel increases the risk of kick back.

WORK LIGHT BULB REPLACEMENT

When the light bulb is worn out and will no longer work, you will need to replace it with a new one.

To replace the light bulb:

Remove the old light bulb by gently turning it anti-clockwise.

MAINTENANCE

During the life of your machine, you will need to practice some regular maintenance to keep your machine in peak performance condition.

Check your machine routinely for damaged or loose grinding wheel, worn power cord or worn switch and any loose hardware.

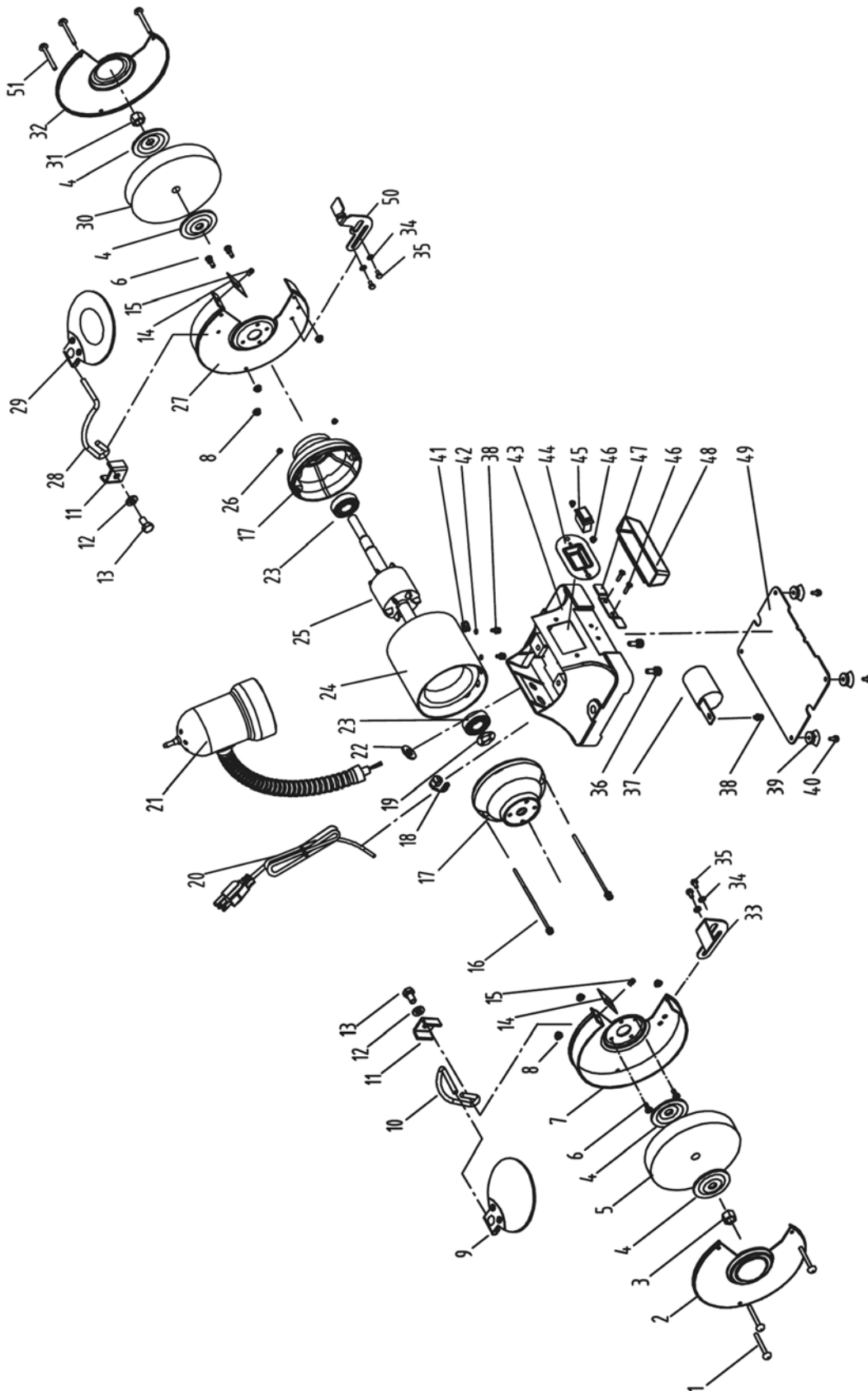
The grinding wheel should be checked regularly from any internal or external damages.

The bearings are pre-lubricated and needs no lubrication.

WARNING!

Turn the switch OFF and un-plug the cord from the power source before installing, servicing, or doing any adjustments. Failure to do so may cause serious personal injury.

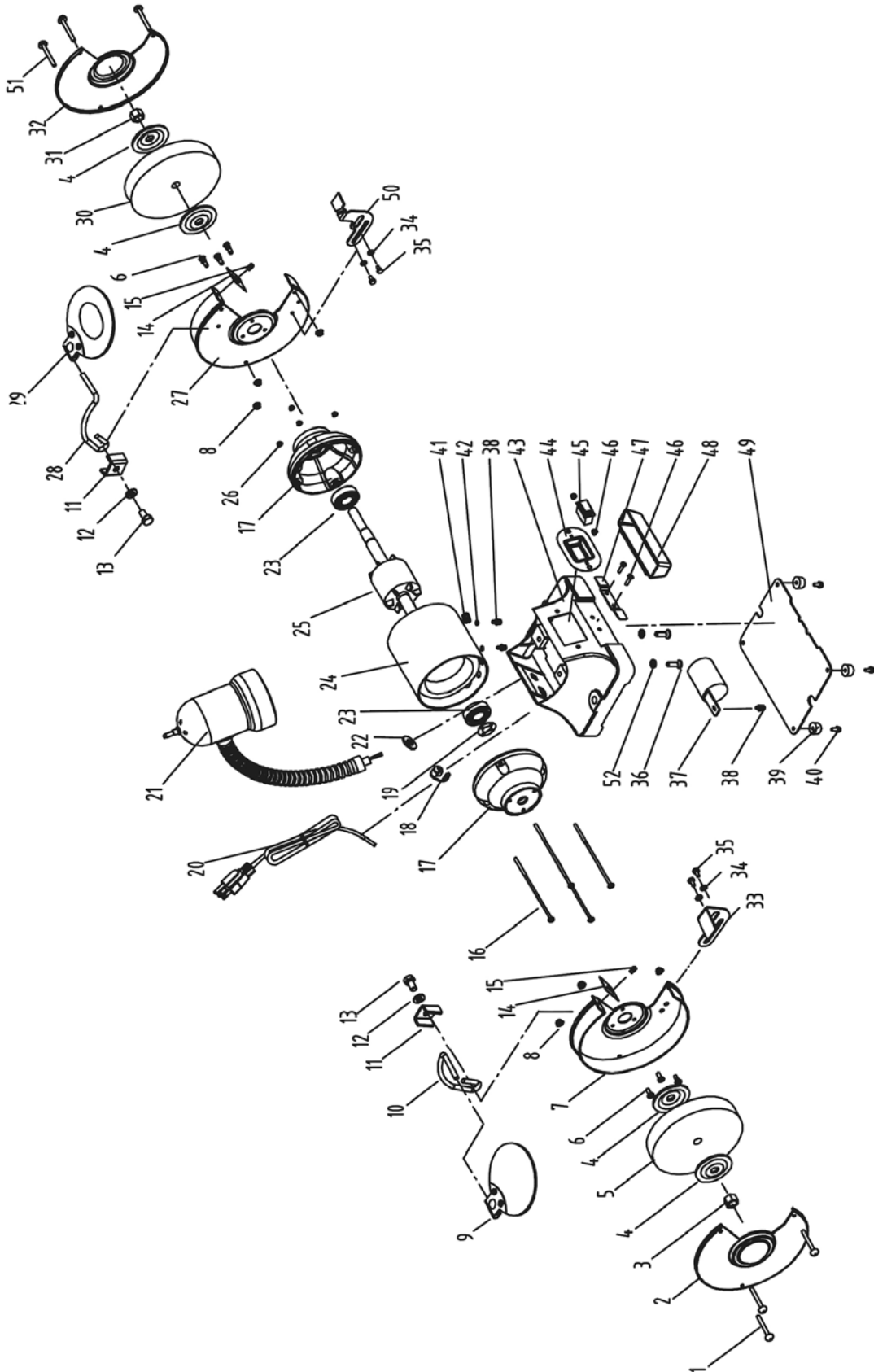
CX905 PARTS BREAKDOWN



CX905 PARTS LIST

No.	Description	Qty.	No.	Description	Qty.
1	Star-head screw M5X42	3	27	Right wheel guard plate	1
2	Left wheel guard cover	1	28	Right eye shield support	1
3	Hex nut, I type M12 left	1	29	Magnify eye shield assy.	1
4	Wheel flange	4	30	Grinding wheel 60#	1
5	Grinding wheel 36#	1	31	Hex nut, I type M12	1
6	Star-head screw+spring washer M5X10	4	32	Right wheel guard cover	1
7	Left wheel guard plate	1	33	Left work rest	1
8	Hex flange nut M5	6	34	Flat washer D8	4
9	Plain eye shield assy.	1	35	Hex bolt M8X8	4
10	Left eye shield support	1	36	Star-head screw+spring washer M6X18	2
11	Bracket	2	37	Capacitor	1
12	Flat washer D6	2	38	Star-head screw+flat washer+ spring washer M4X8	3
13	Hex bolt M6X14	2	39	Rubber washer	4
14	Spark deflector	2	40	Star-head screw+flat washer M4X12	4
15	Star-head screw+flat washer M5X10	2	41	Cord bushing	1
16	Star-head screw+flat washer M4X118	2	42	Toothed lock washer D4	2
17	End cap	2	43	Base	1
18	Strain relief 6P4	1	44	Switch plate	1
19	Wave spring retainer D35	2	45	Switch	1
20	Cord & plug	1	46	Star-head screw M4X8	4
21	Lamp assy.	1	47	Coolant tray clip	1
22	Flat washer D12	1	48	Coolant tray	1
23	Bearing	2	49	Base cover	1
24	Stator	1	50	Right work rest	1
25	Rotor	1	51	Star-head screw M5X48	3
26	Hex flange nut M4	2			

CX906 PARTS BREAKDOWN



CX906 PARTS LIST

No.	Description	Qty.	No.	Description	Qty.
1	Star-head screw M5X48	3	27	Right wheel guard plate	1
2	Left wheel guard cover	1	28	Right eye shield support	1
3	Hex nut, I type M16 left	1	29	Magnify eye shield assy.	1
4	Wheel flange	4	30	Grinding wheel 60#	1
5	Grinding wheel 36#	1	31	Hex nut, I type M16	1
6	Star-head screw+spring washer M5X10	6	32	Right wheel guard cover	1
7	Left wheel guard plate	1	33	Left work rest	1
8	Hex flange nut M5	6	34	Flat washer D8	4
9	Plain eye shield assy.	1	35	Hex bolt M8X8	4
10	Left eye shield support	1	36	Hex bolt M8X20	2
11	Bracket	2	37	Capacitor	1
12	Flat washer D6	2	38	Star-head screw+flat washer+ spring washer M4X8	3
13	Hex bolt M6X14	2	39	Rubber washer	4
14	Spark deflector	2	40	Star-head screw+ big flat washer M5X16	4
15	Star-head screw+flat washer M5X10	2	41	Cord bushing	1
16	Star-head screw+flat washer M5X15	4	42	Toothed lock washer D4	2
17	End cap	2	43	Base	1
18	Strain relief 6P4	1	44	Switch plate	1
19	Wave spring retainer D40	2	45	Switch	1
20	Cord & plug	1	46	Star-head screw M4X8	4
21	Lamp assy	1	47	Coolant tray clip	1
22	Flat washer D12	1	48	Coolant tray	1
23	Bearing	2	49	Base cover	1
24	Stator	1	50	Right work rest	1
25	Rotor	1	51	Star-head screw M5X51	3
26	Hex flange nut M5	4	52	Spring washer D8	2



WARRANTY

CRAFTEX 3 YEARS LIMITED WARRANTY

Craftex warrants every product to be free from defects in materials and agrees to correct such defects where applicable. This warranty covers **three years** for parts and 90 days for labor (unless specified otherwise), to the original purchaser from the date of purchase but does not apply to malfunctions arising directly or indirectly from misuse, abuse, improper installation or assembly, negligence, accidents, repairs or alterations or lack of maintenance.

Proof of purchase is necessary.

All warranty claims are subject to inspection of such products or part thereof and Craftex reserves the right to inspect any returned item before a refund or replacement may be issued.

This warranty shall not apply to consumable products such as blades, bits, belts, cutters, chisels, punches etceteras.

Craftex shall in no event be liable for injuries, accidental or otherwise, death to persons or damage to property or for incidental contingent, special or consequential damages arising from the use of our products.

RETURNS, REPAIRS AND REPLACEMENTS

To return, repair, or replace a Craftex product, you must visit the appropriate Busy Bee Tools showroom or call 1-800-461-BUSY. Craftex is a brand of equipment that is exclusive to Busy Bee Tools.

For replacement parts directly from Busy Bee Tools, for this machine, please call 1-800-461-BUSY (2879), and have your credit card and part number handy.

- All returned merchandise will be subject to a minimum charge of 15% for re-stocking and handling with the following qualifications.
- Returns must be pre-authorized by us in writing.
- We do not accept *collect* shipments.
- Items returned for warranty purposes must be insured and shipped pre-paid to the nearest warehouse
- Returns must be accompanied with a copy of your original invoice as proof of purchase. Returns must be in an un-used condition and shipped in their original packaging a letter explaining your reason for the return. Incurred shipping and handling charges are not refundable.
- Busy Bee will repair or replace the item at our discretion and subject to our inspection.
- Repaired or replaced items will be returned to you pre-paid by our choice of carriers.
- Busy Bee reserves the right to refuse reimbursement or repairs or replacement if a third party without our prior authorization has carried out repairs to the item.
- Repairs made by Busy Bee are warranted for 30 days on parts and labour.
- Any unforeseen repair charges will be reported to you for acceptance prior to making the repairs.
- The Busy Bee Parts & Service Departments are fully equipped to do repairs on all products purchased from us with the exception of some products that require the return to their authorized repair depots. A Busy Bee representative will provide you with the necessary information to have this done.
- For faster service it is advisable to contact the nearest Busy Bee location for parts availability prior to bringing your product in for repairs.