



US007818024B2

(12) **United States Patent**
Gunaratnam et al.

(10) **Patent No.:** **US 7,818,024 B2**

(45) **Date of Patent:** **Oct. 19, 2010**

(54) **NETWORK SELECTION METHODS AND APPARATUS WITH HOME NETWORK PRIORITIZATION AFTER NETWORK SIGNAL RECOVERY OR POWER-ON**

(56) **References Cited**

U.S. PATENT DOCUMENTS

5,442,806 A * 8/1995 Barber et al. 455/435.2

(75) Inventors: **Jayasri Gunaratnam**, Kitchener (CA); **Noushad Naqvi**, Waterloo (CA); **Bryan Taylor**, Kitchener (CA); **Craig Ian Haight Swann**, Waterloo (CA); **Darcy Richard Phipps**, Waterloo (CA); **Hugh Hind**, Waterloo (CA); **Bao Quoc Nguyen**, Waterloo (CA)

(Continued)

FOREIGN PATENT DOCUMENTS

EP 1076463 A2 * 2/2001

(Continued)

(73) Assignee: **Research In Motion Limited**, Waterloo, Ontario (CA)

OTHER PUBLICATIONS

(*) Notice: Subject to any disclaimer, the term of this patent is extended or adjusted under 35 U.S.C. 154(b) by 1010 days.

"PCT Search Report for Application PCT/CA2004/000295", Feb. 27, 2004.

(Continued)

Primary Examiner—Quochien B Vuong
(74) Attorney, Agent, or Firm—John J. Oskorep, Esq.

(21) Appl. No.: **10/788,715**

(22) Filed: **Feb. 27, 2004**

(57) **ABSTRACT**

(65) **Prior Publication Data**

US 2005/0107109 A1 May 19, 2005

Related U.S. Application Data

(60) Provisional application No. 60/519,514, filed on Nov. 13, 2003.

(51) **Int. Cl.**
H04B 7/00 (2006.01)
H04W 4/00 (2009.01)

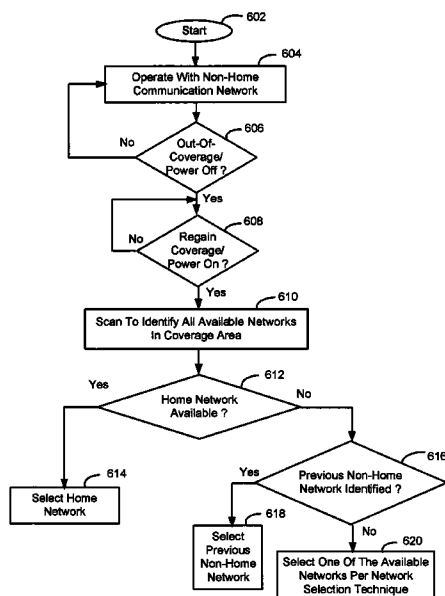
(52) **U.S. Cl.** **455/525; 455/435.2**

(58) **Field of Classification Search** 455/11.1, 455/433, 435.1, 435.2, 435.3, 517, 524, 525, 455/436, 440

In one illustrative example involving automatic network selection, a mobile station selects and operates with a non-home communication network. The mobile station then experiences an out-of-coverage condition with the non-home network (or a power down condition) but subsequently regains signal coverage (or is powered back on) in response, the mobile station scans to identify a plurality of communication networks in its coverage area. If a home network is identified as being available, the mobile station selects and operates with the home network. Otherwise, if the previous non-home network (e.g. the RPLMN) is identified as being available, the mobile station continues operation with the previous non-home network.

See application file for complete search history.

21 Claims, 7 Drawing Sheets



U.S. PATENT DOCUMENTS

5,903,832	A *	5/1999	Seppanen et al.	455/435.3
5,950,130	A *	9/1999	Coursey	455/432.1
6,223,042	B1	4/2001	Raffel	
6,567,663	B1 *	5/2003	Otting et al.	455/434
6,728,536	B1 *	4/2004	Basilier et al.	455/432.1
6,826,414	B1 *	11/2004	Reynolds et al.	455/555
6,968,193	B2 *	11/2005	Van Loon et al.	455/455
7,089,001	B2 *	8/2006	Leung et al.	455/433
7,096,015	B2 *	8/2006	Bridges et al.	455/432.1
2002/0006792	A1 *	1/2002	Usher et al.	455/426
2002/0111168	A1	8/2002	Konno et al.	
2002/0119774	A1 *	8/2002	Johannesson et al.	455/434
2003/0003910	A1 *	1/2003	McClure	455/435
2003/0129971	A1 *	7/2003	Gopikanth	455/414
2003/0134637	A1	7/2003	Cooper	
2003/0148774	A1 *	8/2003	Naghian et al.	455/456
2004/0109431	A1 *	6/2004	Abrahamson et al.	370/342
2004/0142658	A1 *	7/2004	McKenna et al.	455/11.1

2004/0203744	A1 *	10/2004	Hicks et al.	455/432.1
2005/0059397	A1 *	3/2005	Zhao	455/435.2
2005/0075129	A1 *	4/2005	Kuchibhotla et al.	455/552.1
2005/0090277	A1 *	4/2005	Islam et al.	455/525
2005/0094593	A1 *	5/2005	Buckley	370/328
2005/0113088	A1 *	5/2005	Zinn et al.	455/435.2

FOREIGN PATENT DOCUMENTS

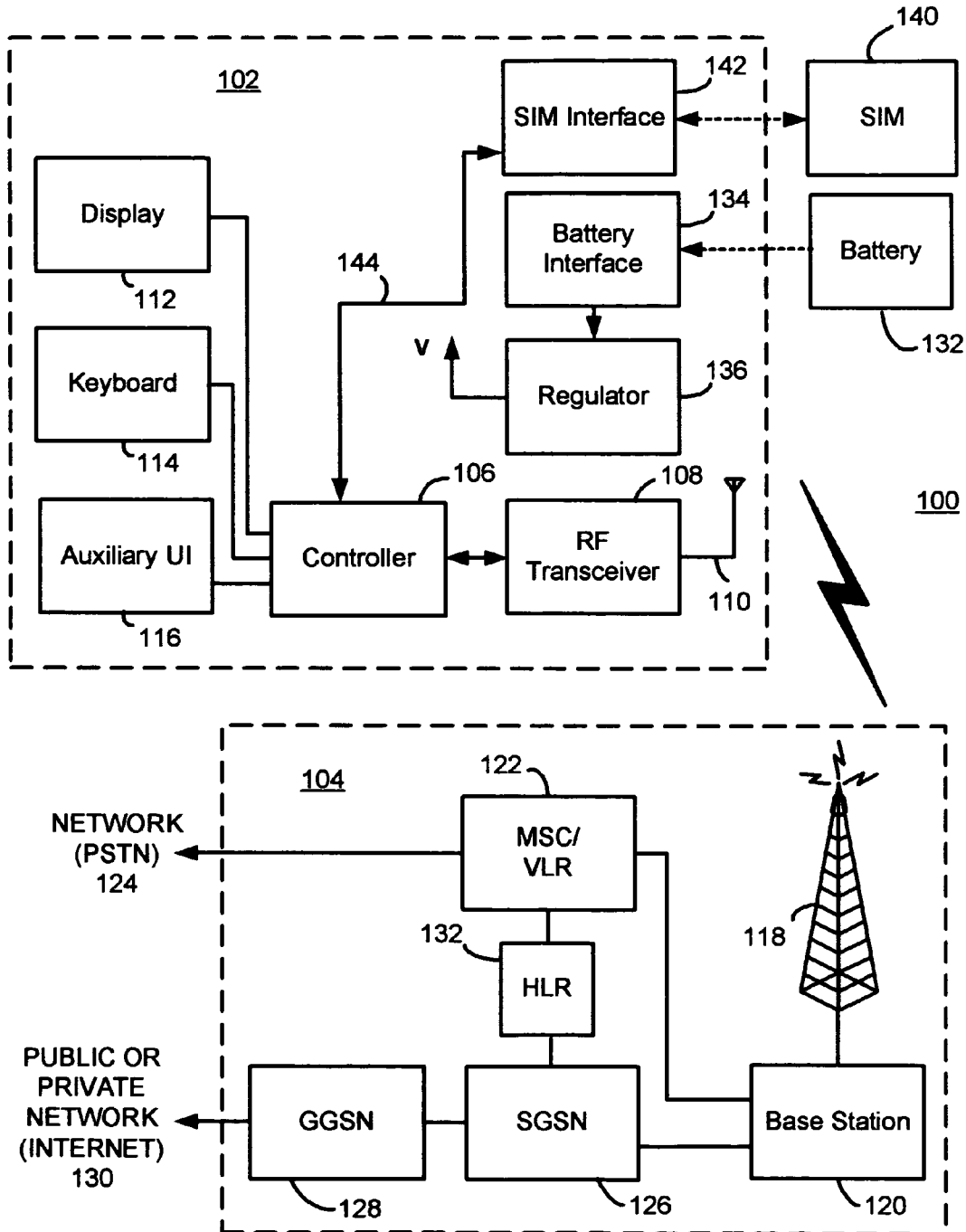
JP	9215039	A	8/1997
JP	2002077032	A	3/2002

OTHER PUBLICATIONS

“European Digital Cellular Telecommunications System (Phase 2) Functions Related to Mobile Station (MS) in Idle Mode (GSM 03.22)”, European Telecommunications Standards Institute, Feb. 1995, vol SMG3, pp. 1-31, Valbonne, France.
 Japanese Office Action, Patent Application No.—2005-518510—May 26, 2008.

* cited by examiner

FIG. 1



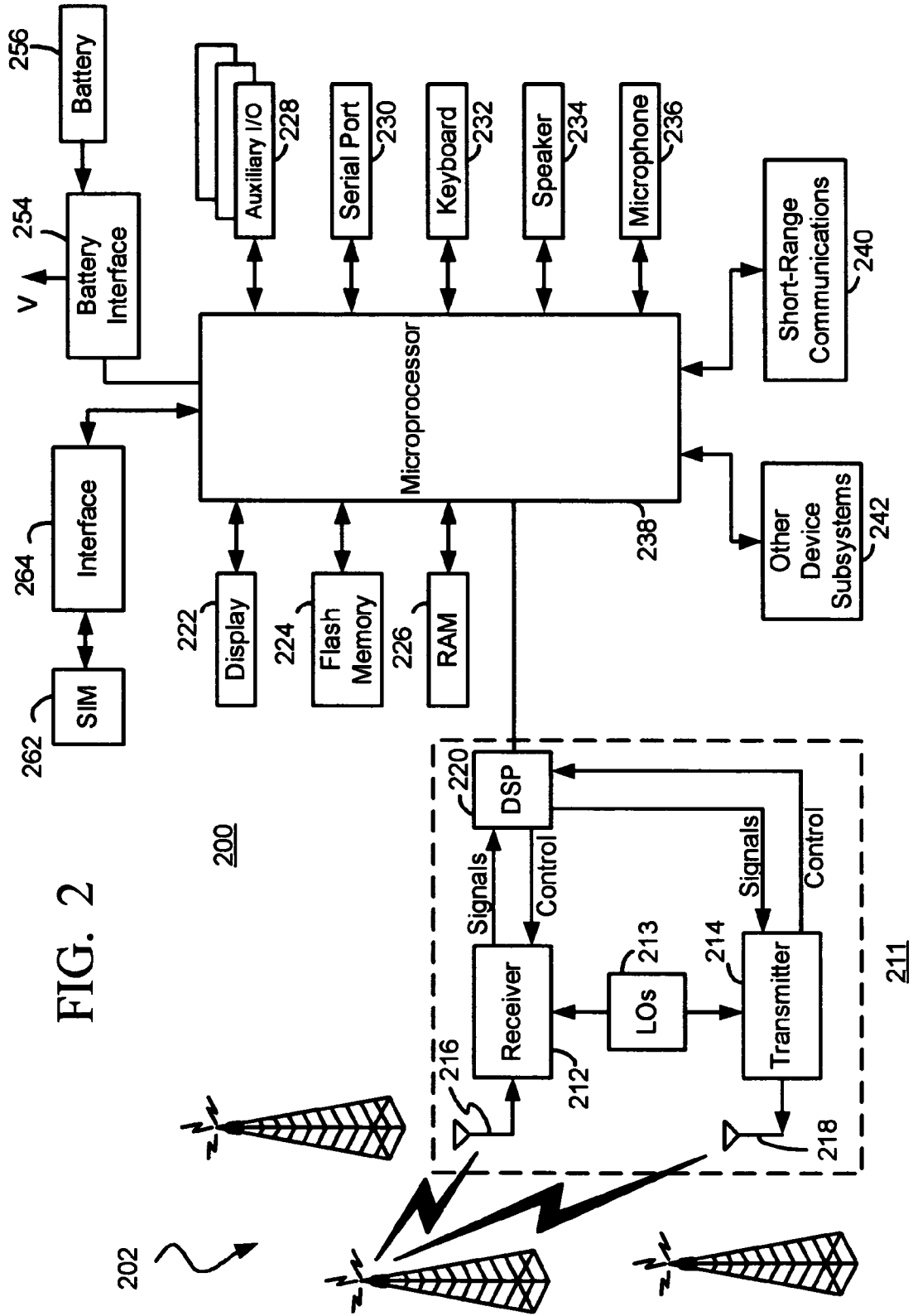


FIG. 2

FIG. 3

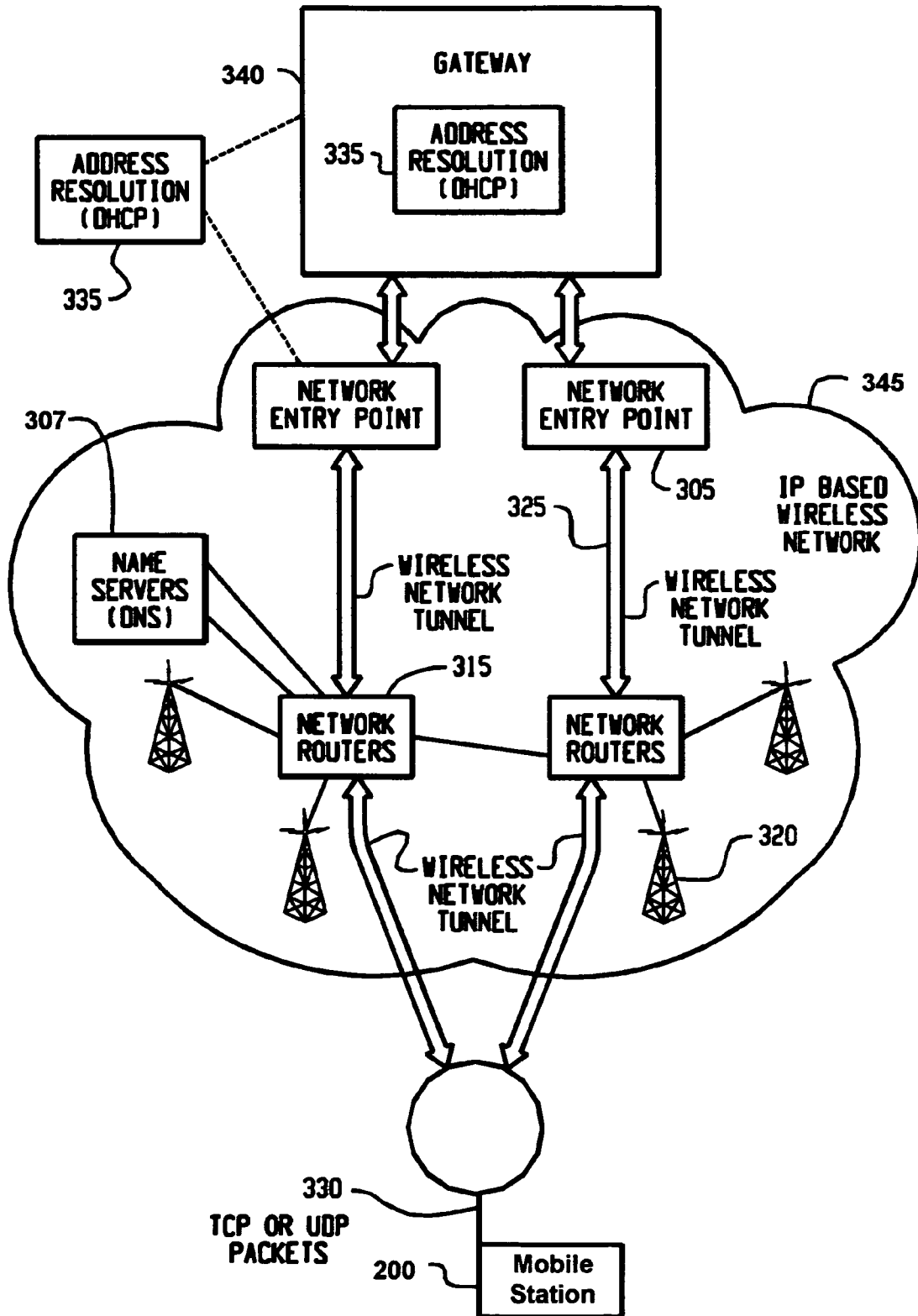


FIG. 4

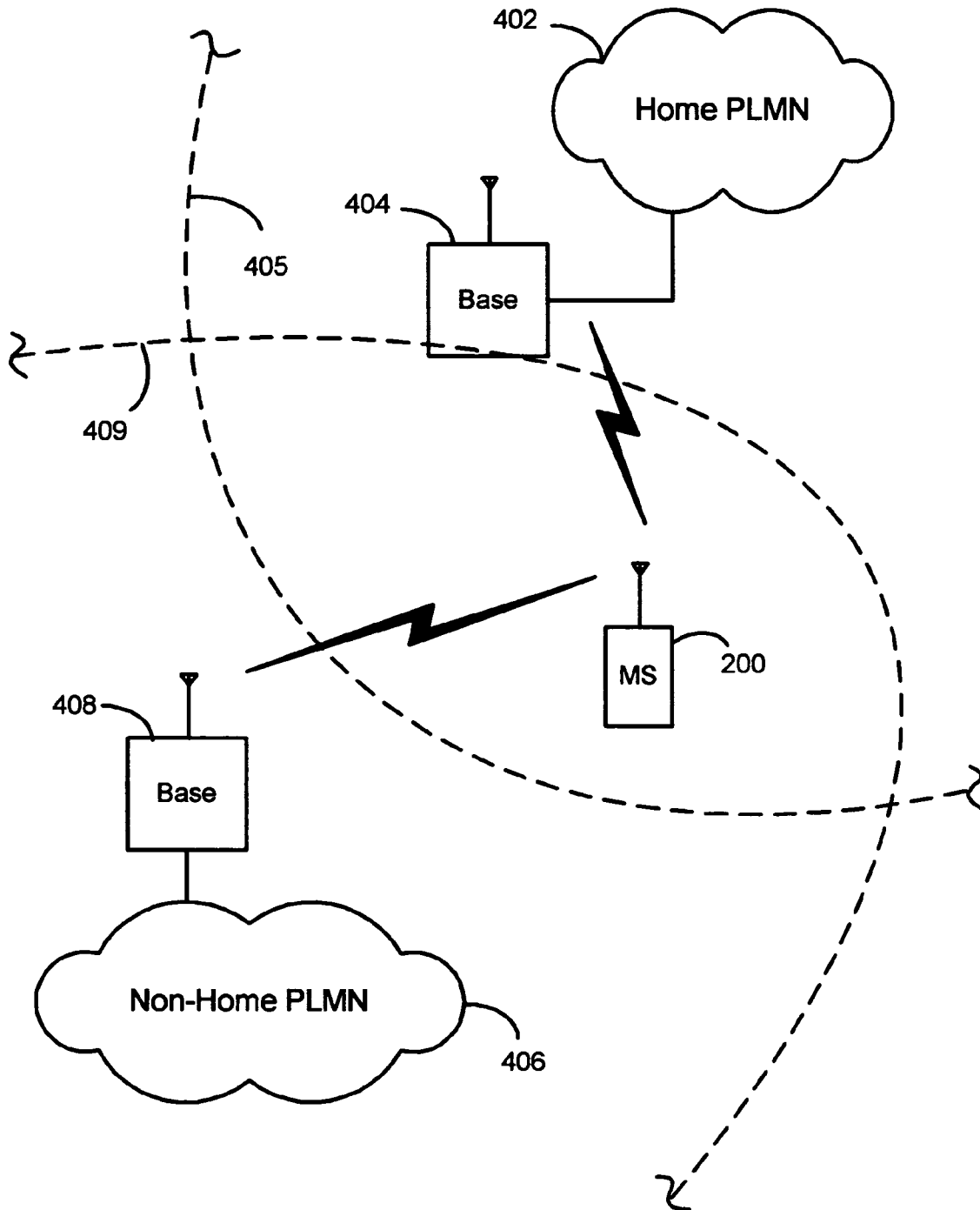


FIG. 5

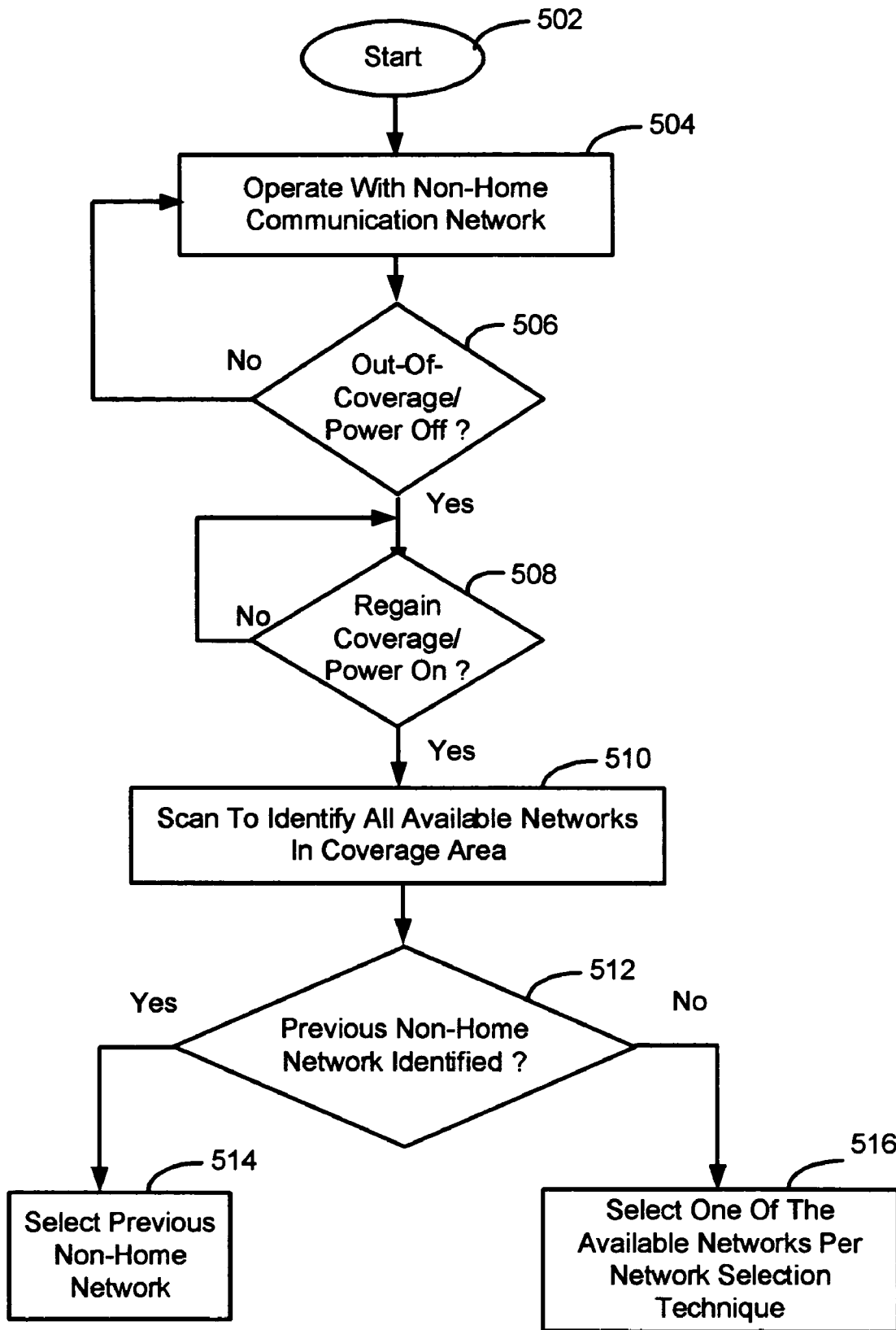


FIG. 6

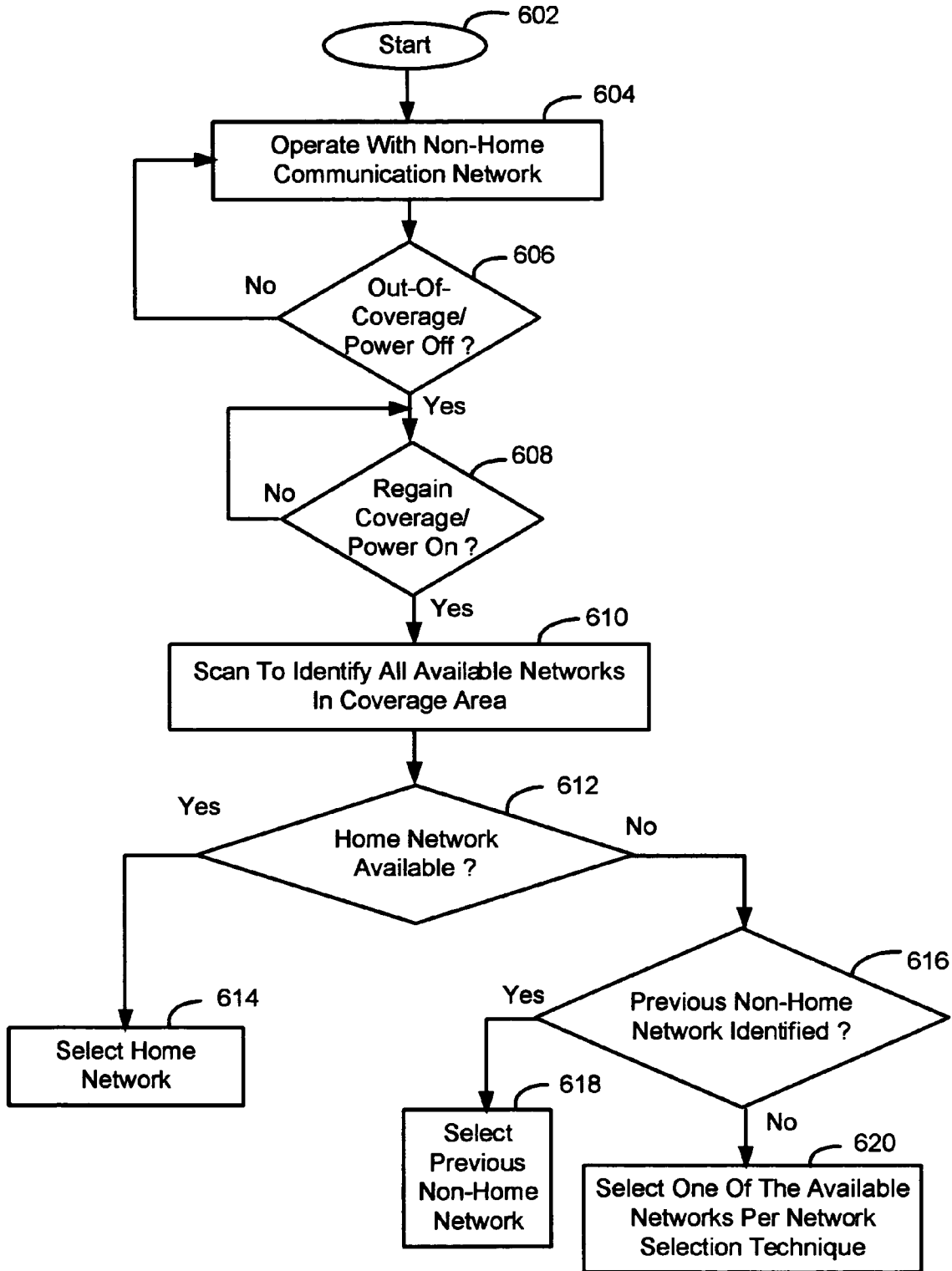
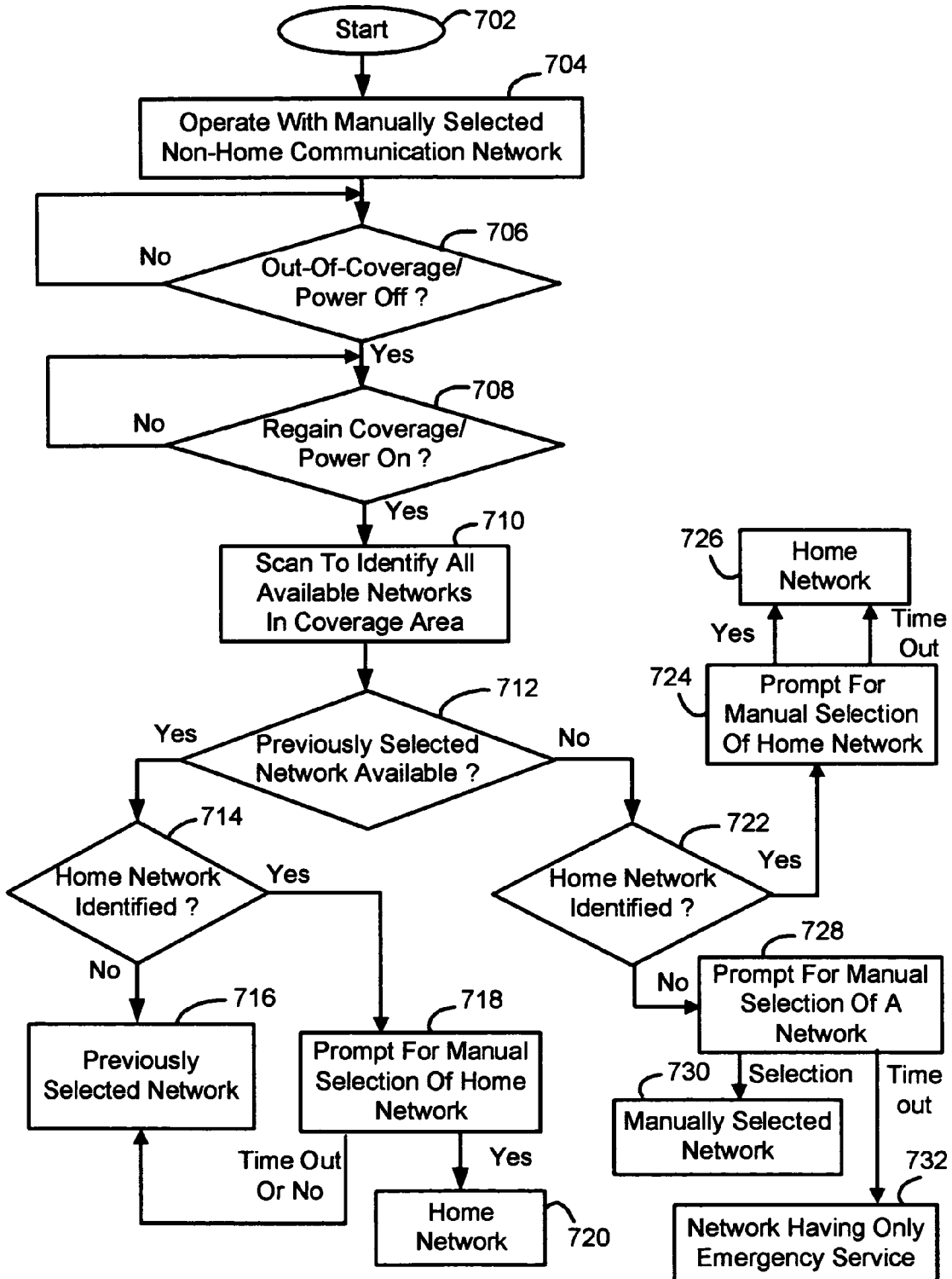


FIG. 7



**NETWORK SELECTION METHODS AND
APPARATUS WITH HOME NETWORK
PRIORITIZATION AFTER NETWORK
SIGNAL RECOVERY OR POWER-ON**

CROSS-REFERENCE TO RELATED
APPLICATION

This application claims the benefit of U.S. Provisional Patent Application Ser. No. 60/519,514 filed on Nov. 13, 2003 entitled "Network Selection Methods And Apparatus With Home Network Prioritization After Recovery From Out-Of-Coverage Conditions", which is hereby incorporated by reference herein.

BACKGROUND

1. Field of the Technology

The present application relates generally to mobile stations and network selection methods employed thereby.

2. Description of the Related Art

A mobile communication device, such as a cellular mobile station, may be capable of making and receiving telephone calls and/or sending and receiving data over a wireless communication network. Before it is able to do this, the mobile station selects and registers with one of a plurality of communication networks which are available within its geographic coverage area. After registering with the selected network, the mobile station operates in an idle mode where it "camps-on" a particular wireless communication channel of the network to monitor for calls or messages. "Network selection" is the particular process performed by the mobile station for selecting the one communication network through which to register and operate.

Cellular telephony operation and network selection schemes are documented in standards specifications that govern the behavior of cellular mobile stations and associated systems. One well-known cellular standard is the Global System for Mobile Communications (GSM) standard. GSM 03.22/European Technical Standards Institute (ETSI) TX 100 930, Technical Specification (TS) 23.122 from the 3rd Generation Partnership Project (3GPP), and other related standards specifications describe the many details of cellular operation and network selection. These documents describe how a mobile station behaves as it moves and roams between various regions and countries to maintain coverage with networks (referred to as Public Land Mobile Networks or PLMNs), primarily for the purpose of providing continuous telephone service.

Traditionally, a mobile station performs network selection by initially scanning to identify all available communication networks within its surrounding coverage area. Each network is identified by a unique Mobile Country Code (MCC) and Mobile Network Code (MNC) pair. If the "home network" (HPLMN) of the mobile station is available, the mobile station will ordinarily select and operate with the home network. If the HPLMN is unavailable, the mobile station will ordinarily select and operate with the communication network having the highest priority in a preferred network list stored in memory of the mobile station. There may be several preferred network lists, commonly referred to as Preferred PLMN lists (PPLMN lists), stored on a Subscriber Identity Module (SIM card) of the mobile station. For example, the PPLMN lists may include a user-controlled PPLMN (U-PPLMN) list and an operator-controlled PLMN (O-PPLMN) list. The above-described network selection method is commonly referred to as an "automatic" network selection method. As an alternative to

this automatic selection method, an end-user of the mobile station may be provided with the ability to manually select from a plurality of listed available networks which are visibly displayed on the mobile device. This conventional network selection method may be referred to as a "manual" network selection method.

Some issues exist with conventional network selection techniques for a mobile station, particularly relating to operation with the HPLMN. After recovering from an out-of-coverage condition, a mobile station operates to select the PLMN with which it had just previously registered (i.e. its "RPLMN"). If the RPLMN is unavailable, the mobile station performs a scan to identify and select a PLMN which may be the HPLMN. However, the specifications do not clearly and specifically address the situation where the RPLMN is not the HPLMN of the mobile station. If the RPLMN is not the HPLMN, and the HPLMN is available after the recovery from the out-of-coverage condition, it is specified that the mobile station is limited to selecting the non-home RPLMN (if available) upon recovery. Such conventional operation is described in ETSI specs 3.22/23.122. Similar problems exist when the mobile station is powered off while operating with the RPLMN and subsequently powered back on. In a related issue, the standards specify that if the last RPLMN is unavailable while the mobile station is in "manual" mode, the mobile station shall camp on any network providing emergency service. This selected network may not be the optimal network with which to operate, especially, for example, if the home network is available.

Accordingly, there is a resulting need for network selection methods and apparatus that overcome the deficiencies of the prior art.

SUMMARY

Network selection methods and apparatus with home network prioritization after network signal recovery and/or power-on are described herein.

In one illustrative example involving "automatic" network selection, a mobile station selects and operates with a non-home communication network. The mobile station then experiences an out-of-coverage condition (or a power down condition) but subsequently regains signal coverage (or is powered back on). In response, the mobile station scans to identify a plurality of communication networks in its coverage area. If a home communication network (e.g. HPLMN) is identified as being available, the mobile station selects and operates with the home communication network. Otherwise, if the previous non-home communication network (e.g. RPLMN) is identified as being available, the mobile station continues operation with the previous non-home communication network.

In another illustrative example involving "manual" network selection, a user input from a user interface for manually selecting a communication network with which the mobile station will operate is received. After regaining network signal coverage from an out-of-coverage condition, or after powering on from a power-off state, the mobile station scans to identify a plurality of communication networks in a coverage area. If the previous manually-selected network (e.g. the RPLMN) is available but the home network is unavailable as identified by the scanning, then the mobile station continues to operate with the previous manually-selected network. If a home communication network (e.g. HPLMN) is identified as being available by the scanning, however, the mobile station causes a visual input prompt to be displayed for manual selection of the home network.

BRIEF DESCRIPTION OF THE DRAWINGS

Embodiments of present invention will now be described by way of example with reference to attached figures, wherein:

FIG. 1 is a block diagram of a communication system which includes a mobile station for communicating in a wireless communication network;

FIG. 2 is a more detailed example of a mobile station for use in the wireless communication network;

FIG. 3 is a particular structure of a system for communicating with the mobile station;

FIG. 4 is an illustration of a mobile station which is currently registered with and communicating through a non-home communication network while its home network is made available;

FIG. 5 is a flowchart for describing a method of selecting a communication network according to current standards;

FIG. 6 is a flowchart for describing a method of "automatic" selection of a communication network with home network prioritization after network signal recovery and/or power-on; and

FIG. 7 is a flowchart for describing a method of "manual" selection of a communication network with home network prioritization after network signal recovery and/or power-on.

DETAILED DESCRIPTION OF THE PREFERRED EMBODIMENTS

Network selection methods and apparatus with home network prioritization after network signal recovery and/or power on are described herein. In one illustrative example involving "automatic" network selection, a mobile station selects and operates with a non-home communication network. The mobile station then experiences an out-of-coverage condition (or a power down condition) but subsequently regains signal coverage (or is powered back on). In response, the mobile station scans to identify a plurality of communication networks in its coverage area. If a home communication network (e.g. HPLMN) is identified as being available, the mobile station selects and operates with the home communication network. Otherwise, if the previous non-home communication network (e.g. RPLMN) is identified as being available, the mobile station continues operation with the previous non-home communication network. In another illustrative example involving "manual" network selection, a user input from a user interface for manually selecting a communication network with which the mobile station will operate is received. After regaining network signal coverage from an out-of-coverage condition, or after powering on from a power-off state, the mobile station scans to identify a plurality of communication networks in a coverage area. If the previous manually-selected network (e.g. the RPLMN) is available but the home network is unavailable as identified by the scanning, then the mobile station continues to operate with the previous manually-selected network. If a home communication network (e.g. HPLMN) is identified as being available by the scanning, however, the mobile station causes a visual input prompt to be displayed for manual selection of the home network.

FIG. 1 is a block diagram of a communication system 100 which includes a mobile station 102 which communicates through a wireless communication network 104. Mobile station 102 preferably includes a visual display 112, a keyboard 114, and perhaps one or more auxiliary user interfaces (UI) 116, each of which are coupled to a controller 106. Controller

106 is also coupled to radio frequency (RF) transceiver circuitry 108 and an antenna 110.

In most modern communication devices, controller 106 is embodied as a central processing unit (CPU) which runs operating system software in a memory component (not shown). Controller 106 will normally control overall operation of mobile device 102, whereas signal processing operations associated with communication functions are typically performed in RF transceiver circuitry 108. Controller 106 interfaces with device display 112 to display received information, stored information, user inputs, and the like. Keyboard 114, which may be a telephone type keypad or full alphanumeric keyboard, is normally provided for entering data for storage in mobile station 102, information for transmission to network 104, a telephone number to place a telephone call, commands to be executed on mobile station 102, and possibly other or different user inputs.

Mobile station 102 sends communication signals to and receives communication signals from network 104 over a wireless link via antenna 110. RF transceiver circuitry 108 performs functions similar to those of base station 120, including for example modulation/demodulation and possibly encoding/decoding and encryption/decryption. It is also contemplated that RF transceiver circuitry 108 may perform certain functions in addition to those performed by base station 120. It will be apparent to those skilled in art that RF transceiver circuitry 108 will be adapted to particular wireless network or networks in which mobile station 102 is intended to operate. When mobile station 102 is fully operational, an RF transmitter of RF transceiver circuitry 108 is typically keyed or turned on only when it is sending to network, and is otherwise turned off to conserve resources. Such intermittent operation of transmitter has a dramatic effect on power consumption of mobile station 102. Similarly, an RF receiver of RF transceiver circuitry 108 is typically periodically turned off to conserve power until it is needed to receive signals or information (if at all) during designated time periods.

Mobile station 102 includes a battery interface 134 for receiving one or more rechargeable batteries 132. When mobile station 102 is powered on by the end user (at keyboard 114, for example), battery 132 provides electrical power to (most if not all) electrical circuitry in mobile station 102. Battery interface 134 provides for both a mechanical and electrical connection for battery 132. Battery interface 134 is coupled to a regulator 136 which regulates power for the device. When mobile station 102 is powered off by the end user to place mobile station 102 in a power-off state, electrical power to most circuits (e.g. at least to RF transceiver 108) is cut off.

Mobile station 102 may consist of a single unit, such as a data communication device, a cellular telephone, a multiple-function communication device with data and voice communication capabilities, a personal digital assistant (PDA) enabled for wireless communication, or a computer incorporating an internal modem. Alternatively, mobile station 102 may be a multiple-module unit comprising a plurality of separate components, including but in no way limited to a computer or other device connected to a wireless modem. In particular, for example, in the mobile station block diagram of FIG. 1, RF transceiver circuitry 108 and antenna 110 may be implemented as a radio modem unit that may be inserted into a port on a laptop computer. In this case, the laptop computer would include display 112, keyboard 114, one or more auxiliary UIs 116, and controller 106 embodied as the computer's CPU. It is also contemplated that a computer or other equipment not normally capable of wireless communication may be adapted to connect to and effectively assume control of RF

transceiver circuitry **108** and antenna **110** of a single-unit device such as one of those described above. Such a mobile station **102** may have a more particular implementation as described later in relation to mobile station **200** of FIG. 2.

Mobile station **102** operates using a Subscriber Identity Module (SIM) **140** which is connected to or inserted in mobile station **102** at a SIM interface **142**. SIM **140** is one type of a conventional "smart card" used to identify an end user (or subscriber) of mobile station **102** and to personalize the device, among other things. Without SIM **140**, the mobile terminal is not fully operational for communication through wireless network **104**. By inserting SIM **140** into the mobile terminal, an end user can have access to any and all of his/her subscribed services. In order to identify the subscriber, SIM **140** contains some user parameters such as an International Mobile Subscriber Identity (IMSI) as well as a preferred network list. In addition, SIM **140** is typically protected by a four-digit Personal Identification Number (PIN) which is stored therein and known only by the end user. An advantage of using SIM **140** is that end users are not necessarily bound by any single physical mobile terminal. Typically, the only element that personalizes a mobile terminal is a SIM. Therefore, the user can access subscribed services using most any mobile terminal equipped to operate with the user's SIM **140**. SIM **140** generally includes a processor and memory for storing information. SIM **140** and its interfacing standards are well known. For interfacing with a standard GSM device having SIM interface **142**, a conventional SIM **140** has six (6) connections.

Mobile station **102** communicates in and through wireless communication network **104**. In the embodiment of FIG. 1, wireless network **104** operates in accordance with a Global Systems for Mobile (GSM) and General Packet Radio Service (GPRS). Wireless network **104** includes a base station **120** with an associated antenna tower **118**, a Mobile Switching Center (MSC) **122**, a Home Location Register (HLR) **132**, a Serving General Packet Radio Service (GPRS) Support Node (SGSN) **126**, and a Gateway GPRS Support Node (GGSN) **128**. MSC **122** is coupled to base station **120** and to a landline network, such as a Public Switched Telephone Network (PSTN) **124**. SGSN **126** is coupled to base station **120** and to GGSN **128**, which is in turn coupled to a public or private data network **130** (such as the Internet). HLR **132** is coupled to MSC **122** and SGSN **126**.

Base station **120**, including its associated controller and antenna tower **118**, provides wireless network coverage for a particular coverage area commonly referred to as a "cell". Base station **120** transmits communication signals to and receives communication signals from mobile stations within its cell via antenna tower **118**. Base station **120** normally performs such functions as modulation and possibly encoding and/or encryption of signals to be transmitted to mobile station **102** in accordance with particular, usually predetermined, communication protocols and parameters, under control of its controller. Base station **120** similarly demodulates and possibly decodes and decrypts, if necessary, any communication signals received from mobile station **102** within its cell. Communication protocols and parameters may vary between different networks. For example, one network may employ a different modulation scheme and operate at different frequencies than other networks.

The wireless link shown in communication system **100** of FIG. 1 represents one or more different channels, typically different radio frequency (RF) channels, and associated protocols used between wireless network **104** and mobile station **102**. An RF channel is a limited resource that must be conserved, typically due to limits in overall bandwidth and a

limited battery power of mobile station **102**. Those skilled in art will appreciate that a wireless network in actual practice may include hundreds of cells, each served by a distinct base station **120** and transceiver, depending upon desired overall expanse of network coverage. All base station controllers and base stations may be connected by multiple switches and routers (not shown), controlled by multiple network controllers.

For all mobile station's **102** registered with a network operator, permanent data (such as a user's profile of mobile station **102**) as well as temporary data (such as a current location of mobile station **102**) are stored in HLR **132**. In case of a voice call to mobile station **102**, HLR **132** is queried to determine the current location of mobile station **102**. A Visitor Location Register (VLR) of MSC **122** is responsible for a group of location areas and stores the data of those mobile stations that are currently in its area of responsibility. This includes parts of the permanent mobile station data that have been transmitted from HLR **132** to the VLR for faster access. However, the VLR of MSC **122** may also assign and store local data, such as temporary identifications. Optionally, the VLR of MSC **122** can be enhanced for more efficient coordination of GPRS and non-GPRS services and functionality (e.g. paging for circuit-switched calls which can be performed more efficiently via SGSN **126**, and combined GPRS and non-GPRS location updates).

Being part of the GPRS network, Serving GPRS Support Node (SGSN) **126** is at the same hierarchical level as MSC **122** and keeps track of the individual locations of mobile stations. SGSN **126** also performs security functions and access control. Gateway GPRS Support Node (GGSN) **128** provides interworking with external packet-switched networks and is connected with SGSNs (such as SGSN **126**) via an IP-based GPRS backbone network. SGSN **126** performs authentication and cipher setting procedures based on the same algorithms, keys, and criteria as in existing GSM. In conventional operation, cell selection may be performed autonomously by mobile station **102** or by base station **120** instructing mobile station **102** to select a particular cell. Mobile station **102** informs wireless network **104** when it reselects another cell or group of cells, known as a routing area.

In order to access GPRS services, mobile station **102** first makes its presence known to wireless network **104** by performing what is known as a GPRS "attach". This operation establishes a logical link between mobile station **102** and SGSN **126** and makes mobile station **102** available to receive, for example, pages via SGSN, notifications of incoming GPRS data, or SMS messages over GPRS. In order to send and receive GPRS data, mobile station **102** assists in activating the packet data address that it wants to use. This operation makes mobile station **102** known to GGSN **128**; interworking with external data networks can thereafter commence. User data may be transferred transparently between mobile station **102** and the external data networks using, for example, encapsulation and tunneling. Data packets are equipped with GPRS-specific protocol information and transferred between mobile station **102** and GGSN **128**.

As apparent from the above, the wireless network includes fixed network components including RF transceivers, amplifiers, base station controllers, network servers, and servers connected to network. Those skilled in art will appreciate that a wireless network may be connected to other systems, possibly including other networks, not explicitly shown in FIG. 1. A network will normally be transmitting at very least some sort of paging and system information on an ongoing basis, even if there is no actual packet data exchanged. Although the

network consists of many parts, these parts all work together to result in certain behaviours at the wireless link.

FIG. 2 is a detailed block diagram of a preferred mobile communication device, a mobile station 200. Mobile station 200 is preferably a two-way communication device having voice and data communication capabilities, including the capability to communicate with other computer systems. Depending on the functionality provided by mobile station 200, it may be referred to as a data messaging device, a two-way pager, a cellular telephone with data messaging capabilities, a wireless Internet appliance, or a data communication device (with or without telephony capabilities).

If mobile station 200 is enabled for two-way communication, it will normally incorporate a communication subsystem 211, which includes a receiver 212, a transmitter 214, and associated components, such as one or more (preferably embedded or internal) antenna elements 216 and 218, local oscillators (LOs) 213, and a processing module such as a digital signal processor (DSP) 220. Communication subsystem 211 is analogous to RF transceiver circuitry 108 and antenna 110 shown in FIG. 1. As will be apparent to those skilled in field of communications, particular design of communication subsystem 211 depends on the communication network in which mobile station 200 is intended to operate.

Network access requirements will also vary depending upon type of network utilized. In GPRS networks, for example, network access is associated with a subscriber or user of mobile station 200. A GPRS device therefore requires a Subscriber Identity Module, commonly referred to as a "SIM" 262, in order to operate on the GPRS network. Without such a SIM 262 inserted in a SIM interface 264, a GPRS device will not be fully functional. Local or non-network communication functions (if any) may be operable, but mobile station 200 will be unable to carry out any functions involving communications over the network. SIM 262 includes those features described in relation to FIG. 1.

Mobile station 200 will operate in connection with one of a plurality of base stations 202 associated with the same or different networks at any given time. Mobile station 200 may send and receive communication signals with the selected network after required network registration or activation procedures have been completed. Network selection of the present application is described in relation to FIGS. 6-7 below. Signals received by antenna 216 through the network are input to receiver 212, which may perform such common receiver functions as signal amplification, frequency down conversion, filtering, channel selection, and like, and in example shown in FIG. 2, analog-to-digital (A/D) conversion. A/D conversion of a received signal allows more complex communication functions such as demodulation and decoding to be performed in DSP 220. In a similar manner, signals to be transmitted are processed, including modulation and encoding, for example, by DSP 220. These DSP-processed signals are input to transmitter 214 for digital-to-analog (D/A) conversion, frequency up conversion, filtering, amplification and transmission over communication network via antenna 218. DSP 220 not only processes communication signals, but also provides for receiver and transmitter control. For example, the gains applied to communication signals in receiver 212 and transmitter 214 may be adaptively controlled through automatic gain control algorithms implemented in DSP 220.

Mobile station 200 includes a microprocessor 238 (which is one implementation of controller 106 of FIG. 1) which controls overall operation of mobile station 200. Communication functions, including at least data and voice communications, are performed through communication subsystem

211. Microprocessor 238 also interacts with additional device subsystems such as a display 222, a flash memory 224, a random access memory (RAM) 226, auxiliary input/output (I/O) subsystems 228, a serial port 230, a keyboard 232, a speaker 234, a microphone 236, a short-range communications subsystem 240, and any other device subsystems generally designated at 242. Data and control lines 260 extend between SIM interface 254 and microprocessor 238 for communicating data therebetween and for control. Some of the subsystems shown in FIG. 2 perform communication-related functions, whereas other subsystems may provide "resident" or on-device functions. Notably, some subsystems, such as keyboard 232 and display 222, for example, may be used for both communication-related functions, such as entering a text message for transmission over a communication network, and device-resident functions such as a calculator or task list. Operating system software used by microprocessor 238 is preferably stored in a persistent store such as flash memory 224, which may alternatively be a read-only memory (ROM) or similar storage element (not shown). Those skilled in the art will appreciate that the operating system, specific device applications, or parts thereof may be temporarily loaded into a volatile store such as RAM 226.

Microprocessor 238, in addition to its operating system functions, preferably enables execution of software applications on mobile station 200. A predetermined set of applications which control basic device operations, including at least data and voice communication applications (such as a network selection scheme), will normally be installed on mobile station 200 during its manufacture. A preferred application that may be loaded onto mobile station 200 may be a personal information manager (PA) application having the ability to organize and manage data items relating to user such as, but not limited to, e-mail, calendar events, voice mails, appointments, and task items. Naturally, one or more memory stores are available on mobile station 200 and SIM 262 to facilitate storage of PIM data items and other information.

The PIM application preferably has the ability to send and receive data items via the wireless network. In a preferred embodiment, PIM data items are seamlessly integrated, synchronized, and updated via the wireless network, with the mobile device user's corresponding data items stored and/or associated with a host computer system thereby creating a mirrored host computer on mobile station 200 with respect to such items. This is especially advantageous where the host computer system is the mobile device user's office computer system. Additional applications may also be loaded onto mobile station 200 through network, an auxiliary I/O subsystem 228, serial port 230, short-range communications subsystem 240, or any other suitable subsystem 242, and installed by a user in RAM 226 or preferably a non-volatile store (not shown) for execution by microprocessor 238. Such flexibility in application installation increases the functionality of mobile station 200 and may provide enhanced on-device functions, communication-related functions, or both. For example, secure communication applications may enable electronic commerce functions and other such financial transactions to be performed using mobile station 200.

In a data communication mode, a received signal such as a text message or web page download will be processed by communication subsystem 211 and input to microprocessor 238. Microprocessor 238 will preferably further process the signal for output to display 222 or alternatively to auxiliary I/O device 228. A user of mobile station 200 may also compose data items, such as e-mail messages or short message service (SMS) messages, for example, using keyboard 232 in conjunction with display 222 and possibly auxiliary I/O

device 228. Keyboard 232 is preferably a complete alphanumeric keyboard and/or telephone-type keypad. These composed items may be transmitted over a communication network through communication subsystem 211.

For voice communications, the overall operation of mobile station 200 is substantially similar, except that the received signals would be output to speaker 234 and signals for transmission would be generated by microphone 236. Alternative voice or audio I/O subsystems, such as a voice message recording subsystem, may also be implemented on mobile station 200. Although voice or audio signal output is preferably accomplished primarily through speaker 234, display 222 may also be used to provide an indication of the identity of a calling party, duration of a voice call, or other voice call related information, as some examples.

Serial port 230 in FIG. 2 is normally implemented in a personal digital assistant (PDA)-type communication device for which synchronization with a user's desktop computer is a desirable, albeit optional, component. Serial port 230 enables a user to set preferences through an external device or software application and extends the capabilities of mobile station 200 by providing for information or software downloads to mobile station 200 other than through a wireless communication network. The alternate download path may, for example, be used to load an encryption key onto mobile station 200 through a direct and thus reliable and trusted connection to thereby provide secure device communication.

Short-range communications subsystem 240 of FIG. 2 is an additional optional component which provides for communication between mobile station 200 and different systems or devices, which need not necessarily be similar devices. For example, subsystem 240 may include an infrared device and associated circuits and components, or a Bluetooth™ communication module to provide for communication with similarly-enabled systems and devices. Bluetooth™ is a registered trademark of Bluetooth SIG, Inc.

Mobile station 200 also includes a battery interface 254 for receiving one or more rechargeable batteries 256. When mobile station 200 is powered on by the end user (at keyboard 232, for example), battery 256 provides electrical power to most if not all electrical circuitry in mobile station 200. Battery interface 254 provides for both a mechanical and electrical connection for battery 256. Battery interface 254 is coupled to a regulator (not shown in FIG. 2) which regulates power to all of the circuitry. When mobile station 200 is powered off by the end user to place mobile station 200 in a power-off state, electrical power to most circuits (e.g. at least to communication sub-system 211) is cut off.

FIG. 3 shows a particular system structure for communicating with a wireless communication device. In particular, FIG. 3 shows basic components of an IP-based wireless data network, such as a GPRS network. Mobile station 200 communicates with a wireless packet data network 345, and may also be capable of communicating with a wireless voice network (not shown). The voice network may be associated with IP-based wireless network 345 similar to, for example, GSM and GPRS networks, or alternatively may be a completely separate network. The GPRS IP-based data network is unique in that it is effectively an overlay on the GSM voice network. As such, GPRS components will either extend existing GSM components, such as base stations 320, or require additional components to be added, such as an advanced Gateway GPRS Service Node (GGSN) as a network entry point 305.

As shown in FIG. 3, a gateway 340 may be coupled to an internal or external address resolution component 335 and one or more network entry points 305. Data packets are transmitted from gateway 340, which is source of information to

be transmitted to mobile station 200, through network 345 by setting up a wireless network tunnel 325 from gateway 340 to mobile station 200. In order to create this wireless tunnel 325, a unique network address is associated with mobile station 200. In an IP-based wireless network, however, network addresses are typically not permanently assigned to a particular mobile station 200 but instead are dynamically allocated on an as-needed basis. It is thus preferable for mobile station 200 to acquire a network address and for gateway 340 to determine this address so as to establish wireless tunnel 325.

Network entry point 305 is generally used to multiplex and demultiplex amongst many gateways, corporate servers, and bulk connections such as the Internet, for example. There are normally very few of these network entry points 305, since they are also intended to centralize externally available wireless network services. Network entry points 305 often use some form of an address resolution component 335 that assists in address assignment and lookup between gateways and mobile devices. In this example, address resolution component 335 is shown as a dynamic host configuration protocol (DHCP) as one method for providing an address resolution mechanism.

A central internal component of wireless data network 345 is a network router 315. Normally, network routers 315 are proprietary to the particular network, but they could alternatively be constructed from standard commercially available hardware. The purpose of network routers 315 is to centralize thousands of base stations 320 normally implemented in a relatively large network into a central location for a long-haul connection back to network entry point 305. In some networks there may be multiple tiers of network routers 315 and cases where there are master and slave network routers 315, but in all such cases the functions are similar. Often network router 315 will access a name server 307, in this case shown as a dynamic name server (DNS) 307 as used in the Internet, to look up destinations for routing data messages. Base stations 320, as described above, provide wireless links to mobile devices such as mobile station 200.

Wireless network tunnels such as a wireless tunnel 325 are opened across wireless network 345 in order to allocate necessary memory, routing, and address resources to deliver IP packets. In GPRS, such tunnels 325 are established as part of what are referred to as "PDP contexts" (i.e. data sessions). To open wireless tunnel 325, mobile station 200 must use a specific technique associated with wireless network 345. The step of opening such a wireless tunnel 325 may require mobile station 200 to indicate the domain, or network entry point 305 with which it wishes to open wireless tunnel 325. In this example, the tunnel first reaches network router 315 which uses name server 307 to determine which network entry point 305 matches the domain provided. Multiple wireless tunnels can be opened from one mobile station 200 for redundancy, or to access different gateways and services on the network. Once the domain name is found, the tunnel is then extended to network entry point 305 and necessary resources are allocated at each of the nodes along the way. Network entry point 305 then uses the address resolution (or DHCP 335) component to allocate an IP address for mobile station 200. When an IP address has been allocated to mobile station 200 and communicated to gateway 340, information can then be forwarded from gateway 340 to mobile station 200.

Wireless tunnel 325 typically has a limited life, depending on mobile device's coverage profile and activity. Wireless network 345 will tear down wireless tunnel 325 after a certain period of inactivity or out-of-coverage period, in order to recapture resources held by this wireless tunnel 325 for

other users. The main reason for this is to reclaim the IP address temporarily reserved for mobile station 200 when wireless tunnel 325 was first opened. Once the IP address is lost and wireless tunnel 325 is torn down, gateway 340 loses all ability to initiate IP data packets to mobile station 200, whether over Transmission Control Protocol (TCP) or over User Datagram Protocol (UDP).

In this application, an "IP-based wireless network" (one specific type of wireless communication network) may include but is not limited to: (1) a Code Division Multiple Access (CDMA) network that has been developed and operated by Qualcomm; (2) a General Packet Radio Service (GPRS) network for use in conjunction with Global System for Mobile Communications (GSM) network both developed by standards committee of European Conference of Postal and Telecommunications Administrations (CEPT); and (3) future third-generation (3G) networks like Enhanced Data rates for GSM Evolution (EDGE) and Universal Mobile Telecommunications System (UMTS). It is to be understood that although particular IP-based wireless networks have been described, the communication re-establishment schemes of the present application could be utilized in any suitable type of wireless packet data network.

The infrastructure shown and described in relation to FIG. 3 may be representative of each one of a number of different communication networks which are provided and available in the same geographic region. One of these communication networks will be selected by the mobile device, either in an automatic or manual fashion, for communications.

FIG. 4 is an illustration of mobile station 200 currently registered and communicating with a non-home communication network 406. A home communication network 402 of mobile station 200 is nearby and includes at least one base station 404 which has a signal coverage area which is partially designated by a dashed line 405. Home network 402 is associated with a first Mobile Country Code (MCC)/Mobile Network Code (MNC) pair. Non-home network 406 also includes at least one base station 408 which has a signal coverage area which is partially designated by a dashed line 409. Non-home network 406 is associated with a second MCC/MNC pair. The MCCs and MNCs are codes that are broadcasted by networks and received by mobile stations 200 during scanning operations of the mobile stations.

Consider the situation where mobile station 200 is being initially served by non-home communication network 406 and subsequently experiences an out-of-coverage condition. Per the specifications, after recovering from the out-of-coverage condition, mobile station 200 must operate to select the PLMN with which it had just previously registered (i.e. its "RPLMN"). In FIG. 4, this would be non-home network 406. If the RPLMN is unavailable, mobile station 200 performs a scan to identify and select a different PLMN (which may be its HPLMN). However, the current specifications do not clearly and specifically address the situation where the RPLMN is not the HPLMN of mobile station 200. If the RPLMN is not the HPLMN, but the HPLMN (e.g. home network 402 of FIG. 4) is available after the recovery from the out-of-coverage condition, mobile station 200 is restricted to selecting the non-home RPLMN (if available) upon recovery. This situation is depicted in FIG. 4 where the signal coverage areas of both networks are overlapping. Similar problems exist when the mobile station is powered off while operating with the RPLMN and subsequently powered back on. Such conventional operation is described in ETSI specs 3.22/23.122.

FIG. 5 is a flowchart for generally describing the method of selecting a communication network according to current standards, which is described in more detail in current ETSI specs 3.22/23.122. Beginning at a start block 502, a mobile station operates on a non-home communication network (step

504) (e.g. non-home network 406 of FIG. 4). The non-home network is not the home network of the mobile station; the home network has a first MCC/MNC pair and the non-home network has a second MCC/MNC pair different from the first MCC/MNC pair. If the mobile station experiences an out-of-coverage condition (step 506), the mobile station waits to regain signal coverage (step 508). Alternatively, if the mobile station is powered off by the end user (step 506), it waits for a user input signal to be powered back on (step 508). If and when the mobile station regains network signal coverage, or is powered back on, the mobile station performs a scanning operation to identify all available networks within its coverage area (step 510). The available networks may or may not include the home network of the mobile station (e.g. home network 402 of FIG. 4). Per the current standards, the mobile station must then identify whether the previous network (e.g. non-home network 406) is identified by the scanning operation (step 512). The previous network may be referred to as the "Registered PLMN" or RPLMN. If the previous network is available at step 512, the mobile station must select and operate with the previous network. This is true even if the HPLMN is available at that time. If the previous network is unavailable at step 512, the mobile station selects the best network using network selection techniques (e.g. based on a prioritized network list) (step 516). Similar problems exist when the mobile station is powered off while operating with the RPLMN and subsequently powered back on.

FIG. 6 is a flowchart for describing a method for "automatic" selection of a communication network with home network prioritization after network signal recovery and/or power-on of the present application. Such a method may be employed in connection with devices shown and described above in relation to FIGS. 1-4. For example, the steps may be performed by microprocessor 238 and communication subsystem 211 of FIG. 2.

Beginning at a start block 602 of FIG. 6, a mobile station registers and operates with a non-home communication network (step 604) (e.g. non-home network 406 of FIG. 4). The non-home network is not the home network of the mobile station; the home network has a first MCC/MNC pair and the non-home network has a second MCC/MNC pair different from the first MCC/MNC pair. If the mobile station experiences an out-of-coverage condition with the network (step 606), the mobile station waits to regain signal coverage (step 608). Alternatively, if the mobile station is powered off by the end user (step 606), it waits for a user input signal to be powered back on (step 608). If and when the mobile station regains network signal coverage, or is powered back on, the mobile station performs a scanning operation to identify all available networks within its coverage area (step 610). The available networks may or may not include the home network of the mobile station (e.g. home network 402 of FIG. 4).

In the present application, the mobile station then identifies whether the home network is available as indicated from the scanning operation (step 612). If the home network (e.g. home network 402 of FIG. 4) is available, the mobile station selects and registers with the home network for operation (step 614). Thus, the home network is given first priority. If the home network is unavailable at step 612, the mobile station identifies whether the previous network (e.g. non-home network 406) is available as indicated from the scanning operation (step 616). The previous network may be referred to as the "Registered PLMN" or RPLMN. If the previous network is available at step 616, the mobile station continues operating with the previous network (step 618). If the previous network is unavailable at step 616, the mobile station selects, registers, and operates with the next "best" network using network selection techniques (e.g. based on a prioritized network list) (step 620).

Thus, the above method provides a solution to a problem that the specifications do not clearly and specifically address: the situation where the RPLMN is not the HPLMN of the mobile station. If the RPLMN is not the HPLMN, and the HPLMN is available after the recovery from the out-of-coverage condition or after power-on, the standards specify that the mobile station is limited to selecting the non-home RPLMN (if available).

FIG. 7 is a flowchart for describing a method for “manual” selection of a communication network with home network prioritization after network signal recovery and/or power on of the present application. Such a method may be employed in connection with devices shown and described above in relation to FIGS. 1-4. For example, the steps may be performed by microprocessor 238 and communication subsystem 211 of FIG. 2. This method is preferably performed in the same device that performs the method of FIG. 6.

Beginning at a start block 702 of FIG. 7, a mobile station operates on a non-home communication network after an end-user manual selection of the non-home communication network (e.g. non-home network 406 of FIG. 4) through the user interface (step 704). The non-home network is not the home network of the mobile station; the home network has a first MCC/MNC pair and the non-home network has a second MCC/MNC pair different from the first MCC/MNC pair. If the mobile station experiences an out-of-coverage condition with the network (step 706), the mobile station waits to regain signal coverage (step 708). Alternatively, if the mobile station is powered off by the end user (step 706), it waits for a user input signal to be powered back on (step 708). If and when the mobile station regains network signal coverage, or is powered back on, the mobile station performs a scanning operation to identify all available networks within its coverage area (step 710). The available networks may or may not include the home network of the mobile station (e.g. home network 402 of FIG. 4).

The mobile station identifies whether the previous manually-selected non-home network (e.g. non-home network 406 of FIG. 4) is available as indicated from the scanning operation (step 712). This previous network may be referred to as the “Registered PLMN” or RPLMN. If the previous manually-selected non-home network is available at step 712, the mobile station identifies whether the home network (e.g. home network 402 of FIG. 4) is available as indicated from the scanning operation (step 714). If the home network is unavailable at step 714, then the mobile station continues operating with the previous manually-selected non-home network (step 716).

If the home network is available as identified in step 714, then the mobile station causes a visual input prompt to be displayed in its visual display for manual selection of the home network by the end user (step 718). For example, the visual input prompt may read “SELECT HOME NETWORK? YES or NO”. The mobile station may further cause the sounding of an audible alert from the user interface. If the end user manually selects the home network in step 718 (“Yes”), then the mobile station registers and operates with the home network (step 720). If no user input is received but rather an expiration of a predetermined time period occurs at step 718 (“Time Out”), or the end user does not wish to utilize the home network at step 718 (“No”), then the mobile station selects, registers, and operates with the previous manually-selected non-home network (step 716).

If the previous manually-selected non-home network is unavailable at step 712, the mobile station identifies whether the home network (e.g. home network 402 of FIG. 4) is available as indicated from the scanning operation (step 722). If the home network is available as identified in step 722, then the mobile station causes a visual input prompt to be displayed in its visual display for manual selection of the home

network by the end user (step 724). For example, the visual input prompt may read “SELECT HOME NETWORK? YES or NO”. The mobile station may further cause the sounding of an audible alert from the user interface. If the end user manually selects the home network in step 724 (“Yes”), then the mobile station registers and operates with the home network (step 726). If no user input is received but rather an expiration of a predetermined time period occurs in step 724 (“Time Out”), then the mobile station selects, registers, and operates with the home network (step 726).

If the home network is unavailable as identified back in step 722, then the mobile station causes the list of all available networks to be displayed for manual selection by the end user (step 728). If the end user manually selects a network in the displayed list of all available networks at step 728 (“Selection”), then the mobile station registers and operates with the manually selected network (step 730). If no user input is received but rather an expiration of a predetermined time period occurs in step 728 (“Time Out”), then the mobile station selects, registers, and operates with any network which provides only emergency service (i.e. no service—including voice and data communication service—other than emergency service such as “911” calls) (step 732).

Advantageously in FIG. 7, even in a manual selection mode where choices are made by the end user, the mobile station makes the end user aware of recent availability of the home network in a timely and unobtrusive fashion. Overall, the mobile station helps facilitate the selection of the best network for the end user even in the manual selection mode.

Final Comments. Network selection methods and apparatus with home network prioritization after network signal recovery and/or power on have been described. In one illustrative example involving automatic network selection, a mobile station selects and operates with a non-home communication network. The mobile station then experiences an out-of-coverage condition (or a power down condition) but subsequently regains signal coverage (or is powered back on). In response, the mobile station scans to identify a plurality of communication networks in its coverage area. If a home communication network (e.g. HPLMN) is identified as being available, the mobile station selects and operates with the home communication network. Otherwise, if the previous non-home communication network (e.g. RPLMN) is identified as being available, the mobile station continues operation with the previous non-home communication network.

A mobile station having an “automatic” network selection technique of the present application includes a wireless transceiver, an antenna coupled to the wireless transceiver, and one or more processors coupled to the wireless transceiver. The one or more processors are configured to select a communication network with which to communicate by selecting and operating with a communication network and, after regaining signal coverage from an out-of-coverage condition with the communication network, or after powering on from a power-off state, causing the following acts to be performed: scanning to identify a plurality of communication networks in a coverage area within which the mobile station is operating; if a home communication network of the mobile station is identified as being available by the scanning, selecting and operating with the home communication network, and otherwise, if the communication network is identified as being available by the scanning, continuing operation with the communication network.

A communication system having an “automatic” network selection technique of the present application includes a first communication network, a second communication network, and one or more mobile stations which are operable with the first and the second communication networks. The one or more mobile stations have the second communication network designated as a home communication network. The one

or more mobile stations are operative for selecting and operating with the first communication network and, after regaining signal coverage from an out-of-coverage condition with the first communication network, or powering on from a power-off state, causing the following acts to be performed: scanning to identify a plurality of communication networks in a coverage area within which the mobile station is operating; if the home communication network of the mobile station is identified as being available by the scanning, selecting and operating with the home communication network; and otherwise, if the first communication network is identified as being available by the scanning, continuing operation with the communication network.

In a manual network selection mode, a user input from a user interface for manually selecting a communication network with which the mobile station will operate is received. After regaining network signal coverage from an out-of-coverage condition, or after powering on from a power-off state, the mobile station scans to identify a plurality of communication networks in a coverage area. If the previous manually-selected network (e.g. the RPLMN) is available but the home network is unavailable as identified by the scanning, then the mobile station continues to operate with the previous manually-selected network. If a home communication network (e.g. HPLMN) is identified as being available by the scanning, however, the mobile station causes a visual input prompt to be displayed for manual selection of the home network.

A mobile station having a “manual” network selection technique of the present application includes a user interface, a wireless transceiver, an antenna coupled to the wireless transceiver, and one or more processors coupled to the wireless transceiver. The one or more processors being configured to provide for the selection of a communication network by receiving a user input from the user interface for manually selecting a communication network for the mobile station; selecting and operating with the manually-selected communication network in response to the user input; and after regaining signal coverage from an out-of-coverage condition with the manually-selected communication network, or after power-on from a power-off state, causing the following acts to be performed: scanning to identify a plurality of communication networks in a coverage area within which the mobile station is operating; if, as identified from the scanning, the communication network is available but a home communication network is unavailable: continuing operations with the communication network; and if, as identified from the scanning, a home communication network of the mobile station is available: causing a visual input prompt to be displayed for manually selecting the home communication network.

A communication system having a “manual” network selection technique of the present application includes a first communication network, a second communication network, and one or more mobile stations which are operable with the first and the second communication networks. The one or more mobile stations have the second communication network designated as a home communication network. The one or more mobile stations are operative for receiving a user input from a user interface of the mobile station for manually selecting the first communication network for operation; selecting and operating with the first communication network in response to the user input; and after regaining signal coverage from an out-of-coverage condition with the first communication network, or after a power-on from a power-off state, causing the following acts to be performed: scanning to identify a plurality of communication networks in a coverage area within which the mobile station is operating; if, as identified from the scanning, the communication network is available but the second communication network is unavailable: continuing operations with the first communication network;

and if, as identified from the scanning, the second communication network of the mobile station is available: causing a visual input prompt to be displayed for manually selecting the second communication network.

The above-described embodiments of invention are intended to be examples only. Alterations, modifications, and variations may be effected to particular embodiments by those of skill in art without departing from scope of invention, which is defined solely by claims appended hereto.

What is claimed is:

1. A network selection method for a mobile station, comprising:

receiving a user input for manually selecting a non-home communication network for communications with the mobile station in a manual network selection mode of the mobile station;

selecting and operating with the manually-selected non-home communication network in response to the user input;

in response to regaining signal coverage from an out-of-coverage condition with the manually-selected non-home communication network while in the manual network selection mode, or in response to being powered-on from a power-off state while in the manual network selection mode, causing the following acts to be performed:

if the non-home communication network is identified as being available, selecting and operating with the non-home communication network;

if the non-home communication network is unavailable and the home communication network is also unavailable: displaying a list of available communication networks for a manual network selection procedure for manual network selection and operation with one of the available communication networks; and

if the non-home communication network is unavailable but the home communication network is identified as being available: instead of carrying out the manual network selection procedure for the manual network selection and operation with one of the available communication networks, selecting and operating with the home communication network.

2. The method of claim 1, wherein the home communication network comprises a Home Public Land Mobile Network (HPLMN) of the mobile station.

3. The method of claim 1, wherein the non-home communication network comprises a Registered Public Land Mobile Network (RPLMN).

4. The method of claim 1, wherein the home and non-home communication networks are operative in accordance with Global Systems for Mobile Communications (GSM).

5. The method of claim 1, further comprising:

in response to a visual input prompt for the manual network selection procedure, receiving a user input for manually selecting the available communication network; and in response to the user input, registering with the available communication network.

6. The method of claim 1 wherein, in causing of the acts to be performed in response to regaining the signal coverage or being powered on, the acts of selecting and operating with the non-home and the home communication networks are performed by the mobile station in the manual network selection mode without user intervention.

7. The method of claim 1, further comprising:

prior to selecting and operating with the home communication network, causing a visual input prompt to be displayed for user selection.

8. The method of claim 1, wherein the act of selecting and operating with the home communication network is performed after an expiration of a predetermined time period.

17

9. The method of claim 1, further comprising:
 prior to selecting and operating with the home communication network: causing a visual input prompt to be displayed for user selection of only the home communication network; and
 wherein the act of selecting and operating with the home communication network is performed in response to receiving the end user selection of the home communication network via the visual input prompt.

10. The method of claim 1, further comprising:
 prior to selecting and operating with the home communication network: causing a visual input prompt to be displayed for user selection; and
 wherein the act of selecting and operating with the home communication network is performed after an expiration of a predetermined time period.

11. A mobile station, comprising:
 a user interface;
 a wireless transceiver;
 an antenna coupled to the wireless transceiver;
 one or more processors coupled to the wireless transceiver;
 the one or more processors being configured to provide for the selection of a communication network by:
 receiving a user input from the user interface for manually selecting a non-home communication network for communications with the mobile station in a manual network selection mode of the mobile station;
 selecting and operating with the manually-selected non-home communication network in response to the user input;
 in response to regaining signal coverage from an out-of-coverage condition with the manually-selected non-home communication network while in the manual network selection mode, or in response to being powered-on from a power-off state while in the manual network selection mode, causing the following acts to be performed:
 if the non-home communication network is identified as being available: selecting and operating with the non-home communication network;
 if the non-home communication network is unavailable and the home communication network is also unavailable: displaying a list of available communication networks for a manual network selection procedure for manual network selection and operation with one of the available communication networks; and
 if the non-home communication network is unavailable but the home communication network is identified as being available: instead of carrying out the manual network selection procedure for the manual network selection and operation with one of the available communication networks, selecting and operating with the home communication network.

12. The mobile station of claim 11, wherein the home communication network comprises a Home Public Land Mobile Network (HPLMN) of the mobile station.

13. The mobile station of claim 11, wherein the non-home communication network comprises a Registered Public Land Mobile Network (RPLMN).

14. The mobile station of claim 11, wherein the home and non-home communication networks are operative in accordance with Global Systems for Mobile Communications (GSM).

15. The mobile station of claim 11, wherein the one or more processors are further configured for:
 receiving a user input for manually selecting the available communication network in response to a visual input prompt for the manual network selection procedure; and

18

registering with the available communication network in response to the user input.

16. The mobile station of claim 11 wherein, in causing the acts to be performed in response to regaining the signal coverage or being powered-on, the one or more processors are further configured to select and operate with the non-home and the home communication networks in the manual network selection mode without user intervention.

17. A communication system, comprising:
 a first communication network;
 a second communication network;
 one or more mobile stations which are operable with the first and the second communication networks;
 the one or more mobile stations having the first communication network designated as a non-home communication network and the second communication network designated as a home communication network;
 the one or more mobile stations being operative to provide for the selection of a communication network by:
 receiving a user input from a user interface of the mobile station for manually selecting the first communication network for operation in a manual network selection mode of the mobile station;
 selecting and operating with the first communication network in response to the user input;
 in response to regaining signal coverage from an out-of-coverage condition with the first communication network while in the manual network selection mode, or in response to being powered-on from a power-off state while in the manual network selection mode, causing the following acts to be performed:
 if the first communication network is identified as being available: selecting and operating with the first communication network;
 if the first communication network is unavailable and the second communication network is also unavailable: displaying a list of available communication networks for a manual network selection procedure for manual network selection and operation with one of the available communication networks; and
 if the first communication network is unavailable but the second communication network is identified as being available: instead of carrying out the manual network selection procedure for the manual network selection and operation with one of the available communication networks, selecting and operating with the second communication network.

18. The communication system of claim 17, wherein the second communication network comprises a Home Public Land Mobile Network (HPLMN) of the one or more mobile stations.

19. The communication system of claim 17, wherein the first communication network comprises a Registered Public Land Mobile Network (RPLMN).

20. The communication system of claim 17, wherein the first and the second communication networks are operative in accordance with Global Systems for Mobile Communications (GSM).

21. The communication system of claim 17, wherein the one or more mobile stations are further operative for:
 receiving a user input for manually selecting the available communication network in response to a visual input prompt for the manual network selection; and
 registering with the available communication network in response to the user input.