



PROFIBUS DP Master NX5001 User Manual

Rev. C 09/2014

Doc. Code: MU214601



altus

www.altus.com.br



No part of this document may be copied or reproduced in any form without the prior written consent of Altus Sistemas de Informática S.A., who reserves the right to carry out alterations without advice.

According to current legislation in force in Brazil, the Consumer Defense Code, we provide the following information regarding personal safety and installation by the client.

The industrial automation equipment built by Altus is strong and reliable due to the stringent quality control it is subjected to. However the electronic industrial control equipment (programmable controllers, numerical commands, etc.) can cause damage to the machines or processes through their controllers when there are defective components and programming or installation errors. This can even put human lives at risk.

The user should consider the possible consequences of these defects and should provide additional external installations for security so that, if necessary, the security of the system can be maintained especially during the initial installation and testing.

It is essential to read and understand the product documentation, such as manuals and technical features before its installation or use.

The equipments manufactured by Altus don't cause direct environmental hazards and don't produce any kind of pollution during its utilization. However, regarding the equipments discarded, it is important to stress that any electronic components inside these products may cause environmental impacts if discharged incorrectly. Therefore, it's strongly recommended that the product is sent to recycle plants to be discarded with the proper waste treatment.

The examples and figures presented in this document are solely for illustrative purposes. Due to possible upgrades and improvements that the products may present, Altus assumes no responsibility for the use of these examples and figures in real applications. They should only be used to assist user trainings and improve experience with the products and their features.

Altus guarantees its equipment as described in General Conditions of Supply, attached to the commercial proposals.

Altus guarantees that their equipment works in accordance with the clear instructions contained in their manuals and/or the technical features, not guaranteeing the success of any particular type of application of the equipment.

Altus does not acknowledge any other guarantee, directly or implied, mainly when end customers are dealing with third-party suppliers.

The requests for additional information about the supply, equipment features and/or any other Altus services must be made in written form. Altus is not responsible for supplying information about its equipment without formal request.

COPYRIGHTS

Ponto Series, MasterTool, PX Series, Quark, ALNET and WebPLC are the registered trademarks of Altus Sistemas de Informática S.A.

Windows NT, 2000, XP, *Vista* and 7 are registered trademarks of Microsoft Corporation.

These products use EtherCAT® (<http://www.ethercat.org/>) technology.

Summary

1. INTRODUCTION	1
Nexto Series	1
Innovative Features	2
PROFIBUS	2
NX5001	3
Redundancy	3
Network Redundancy	3
Master Redundancy	4
Documents Related to this Manual	5
Visual Inspection	5
Technical Support	6
Warning Messages Used in this Manual	6
2. TECHNICAL DESCRIPTION	7
Features	7
General Features	7
Performance	8
Time for Data Transfer between NX5001 and CPU	8
Cycle Time of PROFIBUS Network	8
Transition time for the PROFIBUS slave I/O bus	8
GSD File	9
Distance x Transmission Rate	9
Physical Dimensions	10
Information for Purchase	10
Integral Items	10
Product Code	10
Related Products	10
Compatibility with Other Products	11
3. CONFIGURATION	12
System Configuration	12
Configuration A: Simple PROFIBUS network	12
Configuration B: Redundant PROFIBUS network	13
Configuration C: Two independent simple PROFIBUS networks	14
Configuration D: Two independent redundant PROFIBUS networks	14
Configuration E: Four independent simple PROFIBUS networks	15
4. DIAGNOSTICS	16
General Diagnostics	16
Master Diagnostics	17
Global Errors	18
Master States	18
Network Maps	18
Network Redundancy Diagnostics	21
Diagnostics of Slave Devices	21
PROFIBUS Diagnostics	21
ALTUS Slaves – Ponto Series	25

Other PROFIBUS Slaves	26
5. USER COMMANDS	27
Project with Redundancy and User Commands.....	27
6. INSTALLATION	29
Mechanical Assembly	29
Electrical Installation	29
Installation of the PROFIBUS Network.....	30
Module Hot Swap	30
7. OPERATION.....	31
Operation Modes	31
Output State.....	31
8. MAINTENANCE	32
Module Diagnostics	32
Electronic Tag on Display	32
One Touch Diag	32
Status and Diagnostics Indicators	32
Diagnostic LEDs	33
HTML Page with Complete Status and Diagnostics List.....	34
Status and Diagnostics Mapped in internal Memory	35
Preventive Maintenance.....	36
9. APPENDIX A – USAGE EXAMPLE.....	37
Architecture	37
Project Creation	37
PROFIBUS Network Configuration.....	38
Parameterization of the PROFIBUS Network.....	41
Master Parameters	41
Slaves Parameters.....	45
Module Parameters.....	47
Mapping	47
I/O Modules Mapping	48
Diagnostics Mapping	48
User Commands Mapping.....	49
Loading PROFIBUS Configuration	49
10. APPENDIX B – GSD INSTALLATION.....	51
11. GLOSSARY	54

1. Introduction

This manual aims to guide the user during products selecting stages for certain application, as well as at installation, programming and maintenance related to the product Master PROFIBUS DP NX5001, which is part of the Nexto Series of programmable controllers.

Nexto Series

Nexto Series is a powerful and complete series of Programmable Controllers (PLC) directed to satisfy the necessities of small and middle-sized applications, as well as high level applications. The series has many features and brings the best cost-benefit both for great process automations and machinery automations. Nexto Series is based in a modular system which allows flexibility between performance and cost.

Nexto Series architecture has a great variety of input and output modules. These modules combined with a powerful 32 bits processor and a high speed bus based on Ethernet, fit to several application kinds as high speed control for small machines, complex distributed processes, redundant applications and systems with a great number of I/O as building automation. Furthermore, Nexto Series has modules for motion control, communication modules encompassing the most popular field networks among other features.

Nexto Series uses an advanced technology in its bus, which is based on a high speed Ethernet interface, allowing input and output information and data to be shared between several controllers inside the same system. The system can be easily divided and distributed throughout the whole field, allowing the use of bus expansion with the same performance of a local module, turning possible the use of every module in the local frame or in the expansion frames with no restrictions. For interconnection between frames expansions a simple standard Ethernet cable is used.



Figure 1-1. Nexto Series – Overview

Innovative Features

Nexto Series brings to the user several innovations in utilization, supervision and system maintenance. These features were developed focusing a new experience in industrial automation. The list below shows some new features that users will find in the NX5001 module:



One Touch Diag TM: One Touch Diag is an exclusive feature that Nexto Series brings to PLCs. With this new concept, the user can check diagnostic information of any module present in the system directly on CPU's graphic display with one single press in the diagnostic switch of the respective module. OTD is a powerful diagnostic tool that can be used offline (without supervisor or programmer), reducing maintenance and commissioning times.

ETD – Electronic Tag on Display: Another exclusive feature that Nexto Series brings to PLCs is the Electronic Tag on Display. This new functionality brings the process of checking the tag names of any I/O pin or module used in the system directly to the CPU's graphic display. Along with this information, the user can check the description, as well. This feature is extremely useful during maintenance and troubleshooting procedures.

DHW – Double Hardware Width TM: Nexto Series modules were designed to save space in user cabinets or machines. For this reason, Nexto Series delivers two different module widths: Double Width (two backplane rack slots are required) and Single Width (only one backplane rack slot is required). This concept allows the use of compact I/O modules with a high-density of I/O points along with complex modules, such as CPUs, fieldbus masters and power supply modules.



iF Product Design Award 2012: Nexto Series was the winner of iF Product Design Award 2012 in industry + skilled trades group. This award is recognized internationally as a seal of quality and excellence, considered the Oscars of the design in Europe.

PROFIBUS

Fieldbus networks usage as communication link between Central Processing Units of automation and field devices grow popular every day. Experience has shown that usage of network technologies brings many benefits to installation, configuration and maintenance of wirings in comparison with previous technology. In field networks, only one pair of wires is needed to transmit information, such as input or output data, parameters, diagnostics, programs or power for field devices.

Field networks have been used for quite some time, however the first ones were proprietary and incompatible with each other, with high costs for configuration or interfacing between equipments of different manufacturers. New networks offer open standards, which dismisses projects of complex interfaces. Open systems allow the end user to freely choose the best solution for his application between a wide range of products.

PROFIBUS is the leading fieldbus network in Europe, with great acceptance in the rest of the world. Its application areas include manufacturing, process control and building automation.

PROFIBUS is an open fieldbus, standardized in Europe as EN50170, and internationally recognized as IEC61158 e IEC61784. The most important world manufacturers of automation technology offer PROFIBUS interface for its devices.

NX5001

Master PROFIBUS DP NX5001 is an advanced master for interface, developed to be used alongside CPUs from Nexto Series. The module supports the protocol for cyclical data exchange, and can be used in any frame from Nexto Series.

Interface allows access of CPUs from Nexto Series in any field device compatible with this protocol, such as module systems of remote I/Os, sensors, transmitters, actuators, etc.

In addition to the use of interface NX5001 in single PROFIBUS networks, two interfaces NX5001 can be used with CPUs from Nexto Series to implement two independent networks, or even four interfaces NX5001 can be used to implement two independent networks (for further information see System Configuration).



Figure 1-2. NX5001 Module

Redundancy

There are two types of redundancies that can be configured for NX5001 module:

- Network redundancy
- Master redundancy

Network Redundancy

In redundant networks, each slave device has two network connections, forming a double network, connected to two modules NX5001.

Fieldbus network redundancy is a vital feature where high reliability is required. NX5001 network interface is the solution for this type of application, being used in pairs.

In this type of redundancy, the slave device, by having two connections, chooses through which network it will receive and transmit its data. Examples of redundant devices are Altus' PROFIBUS network heads PO5063V5 and PO5065.

Each pair of redundant heads controls a bus of Ponto Series I/O modules, alternately. One of the redundant heads is communicating through the network (active) and the other one is in stand-by. The stand-by head can take control of the bus if there is a failure in the network of the active head or in its hardware. This change is automatic and transparent to users, keeping the system in operation in case of failure in one of the networks.

At the CPU that controls the network, the NX5001 interfaces manage incoming data from the network, so that only the inputs from the active head are copied to the CPU's variables, while inputs of the stand-by head are ignored. The outputs are sent to the two heads (active and stand-by), but only the active head writes in the output modules.

The CPUs are informed through NX5001 interfaces which head is active on each network node, and if there is any defective device.

In this type of network, hot reconfiguration is allowed, reconfiguring one network while the other remains in operation and vice-versa.

It should be noted that the network can continue operating normally when there are defects in some heads connected to PROFIBUS A network, as well as defects in other heads connected to PROFIBUS B network, as long as both heads from the same group of remote I/O have not failed. In this case, communication with the system of remote I/O is partly distributed between network A and network B.

Master Redundancy

Master redundancy is characterized by the existence of two PROFIBUS DP NX5001 masters on the same network, where one NX5001 acts as active master and the other as passive master.

PROFIBUS masters in active mode establish connection with the slaves. Its network operation status is OPERATE.

Enabled PROFIBUS masters in passive mode are used to test the PROFIBUS transmission and reception circuits, in order to avoid failures. Passive masters communicate only with active masters. Its operation state is STOP.

Further details regarding the master states can be found in the PROFIBUS Network Utilization - MU299026, or in the Operation Modes chapter.

Regarding its configuration, both masters receive the same bus configuration and the PROFIBUS slaves' configuration.

The active network master has the address configured by the user in the MasterTool IEC XE programmer. The passive master connects to the network through another address. The passive master's address is active master's address subtracted by one. In case the active master's address is zero, the passive master's address will be set to 125.

The passive network master's address is transparent to the user, so there's no specific configuration needed. The NX5001 module calculates and takes this address when it becomes the PROFIBUS network passive master.

It's up to the Nexto Series CPU to define if the PROFIBUS DP NX5001 master acts as passive or active master.

For further details regarding the PROFIBUS DP NX5001 insertion in the series redundancy context, see Nexto Series CPU Utilization manual (MU214605), chapter Redundancy with NX3030 CPU.

Documents Related to this Manual

For additional information about Nexto Series, you can consult other documents (manuals and technical data) beyond this one. These documents are available in its last review on www.altus.com.br.

Each product has a document called Technical Characteristics (CE), with the list of features of the product in question. Additionally, the product may have User Manuals (manuals' codes are mentioned at CEs of each product).

It is recommended to consult the following documents as a source of additional information:

Code	Description	Language
CE114000 CT114000 CS114000	Nexto Series – Technical Characteristics Série Nexto – Características Técnicas Serie Nexto – Especificaciones y Configuraciones	English Spanish Portuguese
MU214600 MU214000 MU214300	Nexto Series User Manual Manual de Utilização Série Nexto Manual Del Usuario Serie Nexto	English Spanish Portuguese
MU214605 MU214100 MU214305	Nexto Series CPUs User Manual Manual de Utilização UCPs Série Nexto Manual del Usuario UCPs Serie Nexto	English Spanish Portuguese
MU299026	Manual de Utilização da Rede PROFIBUS	Portuguese
MU209010	Configuração da Remota PROFIBUS – Série Ponto	Portuguese
MU209508	Manual de Utilização Cabeça PROFIBUS PO5063V1 e Cabeça Redundante PROFIBUS PO5063V5	Portuguese
MU219511 MU209511	PO5064 PROFIBUS Head and PO5065 Redundant PROFIBUS Head Utilization Manual Manual de Utilização Cabeça PROFIBUS PO5064 e Cabeça Redundante PROFIBUS PO5065	English Portuguese
MU209020	Manual de Utilização Rede HART sobre PROFIBUS	Portuguese
MU204631	Manual de Utilização do Repetidor Ótico / FOCUS PROFIBUS	Portuguese
MU299609 MU299048 MU299800	MasterTool IEC XE User Manual Manual de Utilização MasterTool IEC XE Manual del Usuario MasterTool IEC XE	English Spanish Portuguese
MP399609 MP399048 MP399800	MasterTool IEC XE Programming Manual Manual de Programação MasterTool IEC XE Manual de Programación MasterTool IEC XE	English Spanish Portuguese

Table 1-1. Related Documents

Visual Inspection

Before installing the product, we recommend a careful visual inspection of equipment, checking if there is any damage caused by shipping. Make sure all components of your order are in perfect condition. In case of defects, inform the transportation company and the nearest Altus representative or distributor.

CAUTION:

Before removing modules from the package, it is important to discharge eventual static potentials accumulated in your body. Touch (with bare hands) a metallic grounded surface before handling the modules. Such procedure ensures that the levels of static electricity supported by the module will not be overcome.

It is important to write down the serial number of each received item, as well as its software revisions, if any. This information will be necessary if you need to contact Altus Technical Support.

Technical Support

To contact Altus Technical Support in São Leopoldo, RS, call +55 51 3589-9500. To find the centers of Altus Technical Support in other locations, check our website (www.altus.com.br) or send an email to altus@altus.com.br.

If the equipment is already installed, please have the following information when requesting assistance:

- Models of equipment used and the configuration of installed system
- Serial number of CPU
- Equipment review and executive software version, listed on the label affixed to the product side
- Information about the CPU's operation mode, obtained through MasterTool IEC XE programmer and graphical display from CPU
- Contents of the application program, obtained through MasterTool IEC XE programmer
- Version of the programmer used

Warning Messages Used in this Manual

In this manual, warning messages will present the following formats and meanings:

DANGER:

Relates potential causes that, if not noted, *will generate* damages to physical integrity and health, property, environment and production loss.

CAUTION:

Relates configuration details, application and installation that *must* be followed to avoid conditions that could lead to system failure, and its related consequences.

ATTENTION:

Indicate important details of configuration, application or installation to obtain the maximum operation performance from the system.

2. Technical Description

Features

General Features




	NX5001
Space use in Backplane	2 sequential slots
Maximum amount of PROFIBUS Slaves	125
Maximum amount of cyclic input bytes per slave	244
Maximum amount of cyclic output bytes per slave	244
Maximum amount of input bytes	3584
Maximum amount of output bytes	3584
PROFIBUS DP	Yes
Transmission rate	9.6 to 12,000 kbit/s, configurable
Redundancy support	Yes (software version 1.1.0.0 or above/ product revision AE or above)
Hot Swap support	Yes
Indication of status and diagnostics	Display, LEDs, web server and CPU internal memory
One Touch Diag (OTD)	Yes
Isolation	
Interface PROFIBUS for logic	1000 Vac / 1 minute
Interface PROFIBUS for protection grounding 	1000 Vac / 1 minute
Logic to protection grounding 	1250 Vac / 1 minute
Current consumption from bus power source	400 mA
Dissipated power	2 W
IP level	IP 20
Operating temperature	0 to 60 °C
Storage temperature	-25 to 70°C
Relative humidity	5 to 96%, without condensation
RoHS	Yes
Standards	IEC 61131-2 CE, Electromagnetic Compatibility (EMC) and Low-Voltage Directive (LVD) 
Module dimensions (W x H x D) mm	36.00 x 114.63 x 115.30 mm
Package dimensions (W x H x D) mm	42.00 x 122.00 x 147.00 mm
Net weight	200 g
Gross weight (with package)	250g

Table 2-1. General Characteristics

Notes

Transmission Rate: transmission rate can be configured with the following communication speeds: 9.6 kbits/s, 19.2 kbits/s, 93.75 kbits/s, 187.5 kbits/s, 500 kbits/s, 1500 kbits/s, 3000 kbits/s, 6000 kbits/s and 12000 kbits/s.

Redundancy Support: it is possible to assemble a PROFIBUS redundant network using two NX5001. This implementation is described in section System Configuration.

Maximum Number of PROFIBUS Slaves: NX5001 can address up to 31 slaves without needing repeaters or converters. For more than 31 slaves, repeaters and converters must be used.

Logic: Logic is the name given to inner interfaces such as memories, processor and rack interfaces.

Electronic circuits conformal coating: The electronic circuits conformal coating protects the product's inner parts against humidity, dust and other harmful elements to electronic circuits.

Performance

The PROFIBUS DP NX5001 master performance depends on 3 factors:

- Time for data transfer between CPU and NX5001
- PROFIBUS network cycle time
- Time between I/O channels transition in the PROFIBUS slaves

The summation of these three factors determines the latency between user application and I/O state change in the PROFIBUS slave.

In other words, it defines the maximum necessary time for a change in an output variable (%Q), made by the user application, alters the PROFIBUS slave, connected to the PROFIBUS DP NX5001 master, output value, and/or the maximum necessary time for an alteration in the PROFIBUS slave input to be perceived by the user application (%I).

Time for Data Transfer between NX5001 and CPU

This parameter refers to the time required to transfer all variables (%Q and/or %I) between CPU and NX5001 module.

This time is proportional to the total number of input (%I) and output (%Q) variables within the PROFIBUS slave declaration.

Total bytes (Summation of %Ix and/or %Qx)	Transfer Time
20	3,77 ms
7168	9,00 ms

Table 2-2. Data Transfer Time between CPU and NX5001.

Cycle Time of PROFIBUS Network

This parameter refers to the time required for the NX5001 to communicate with all its PROFIBUS slaves.

Besides the total amount of bytes and slaves configured in the PROFIBUS network, there are other parameters configured in the tab *DP-Parameters* (see *Master Parameters* section) which influences cycle time:

- max. T_SDR: Time the master must wait between sending requests.
- Baud Rate: The selected communication rate.
- Slave interval: Minimum time between two master's accesses to the same slave.
- Highest station address: Highest PROFIBUS network device address. Its default value is 125, but it is a good practice to change it to the largest address used in the PROFIBUS network's configuration.

ATTENTION:
Further details can be obtained in the PROFIBUS network Utilization Manual – MU299026.

Transition time for the PROFIBUS slave I/O bus

This time represents the necessary time for the PROFIBUS slave I/O channel to alter its state in the bus.

ATTENTION:
See the *Transition/Update Time* parameter in the table at the *Features* chapter of the respective I/O module's Technical Features document.

GSD File

Each PROFIBUS DP device has a file that defines its limits and possibilities for configuration. GSD type files are used to ease interoperability in PROFIBUS network between devices from different manufacturers. These files contain device features to be considered for correct operation on the network, such as number and type of I/O modules, diagnostic messages, possible network parameters, transmission rates and time-out.

Each device to be integrated to a PROFIBUS network shall have a GSD file supplied by its manufacturer.

ATTENTION:

- GSDs of PROFIBUS heads of Ponto Series, and from Nexto's Master PROFIBUS DP NX5001 are present in the MasterTool IEC XE programmer.
- Differently from PROFIBUS masters of AL and Ponto Series, the configuration of Master PROFIBUS DP NX5001 is performed directly in the MasterTool IEC XE programmer.

Distance x Transmission Rate

In the cable route planning, Table 2-3 should be taken under consideration.

Segment length should be as defined in the Table.

Transmission Rate (kbit/s)	Distance/segment (m)
9.6	1200
19.2	1200
93.75	1200
187.5	1000
500	400
1500	200
3000	100
6000	100
12000	100

Table 2-3. Possible Distances for AL-2303 Cable

Physical Dimensions

Dimensions in mm.

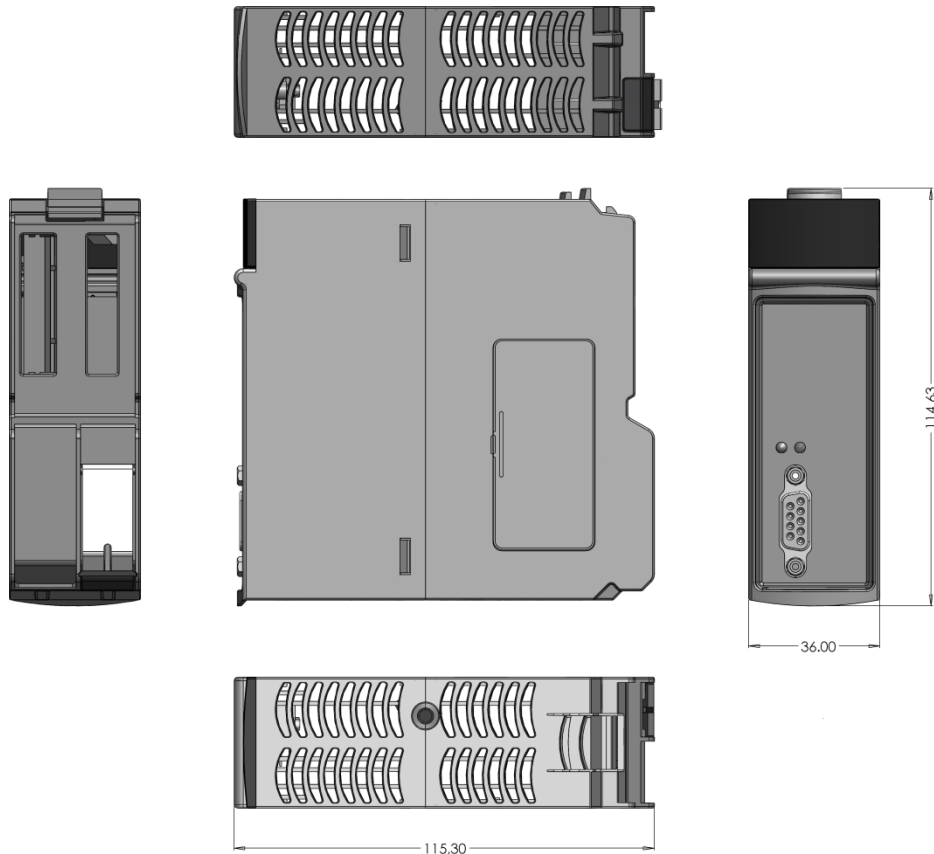


Figure 2-1. Physical Dimensions from NX5001

Information for Purchase

Integral Items

The product package contains the following items:

- One module NX5001
- Installation guide

Product Code

The following codes shall be used for product purchase:

Code	Denomination
NX5001	PROFIBUS DP Master

Table 2-4. Denomination of NX5001

Related Products

The following products must be acquired separately whenever necessary:

Code	Denomination
PO5063V1	Fieldbus PROFIBUS DP Head
PO5063V5	Fieldbus Redundant PROFIBUS DP Head

PO5064	PROFIBUS DPV1 Head
PO5065	Redundant PROFIBUS DPV1 Head
AL-2601	PROFIBUS Connector
AL-2602	PROFIBUS Terminator Connector
AL-2605	Terminator with Power Source Diagnostics
AL-2303	PROFIBUS Cable
AL-2431	FOCUS/PROFIBUS Optical Repeater
AL-2432	FOCUS/PROFIBUS Optical Repeater with two Optical Ports

Table 2-5. Related Products

Notes

PO5063V1: PROFIBUS DP network head enables the connection of Ponto Series' modules to PROFIBUS networks, expanding the CPU's I/O system.

PO5063V5: PROFIBUS DP redundant network head enables the connection of Ponto Series' modules to redundant PROFIBUS networks.

PO5064: PROFIBUS DP network head enables the connection of Ponto Series' modules to PROFIBUS networks, expanding the CPU's I/O system. Additionally, PO5064 module supports DPV1 communication between Ponto Series' modules and any other PROFIBUS network node.

PO5065: PROFIBUS DP redundant network head enables the connection of Ponto Series' modules to PROFIBUS networks, expanding the CPU's I/O system. Additionally PO5065 module supports DPV1 communication between Ponto Series' modules and any other PROFIBUS network node.

AL-2601: DB9 connector with standard PROFIBUS pinout. It's suitable for connections between PROFIBUS networks and devices placed on intermediate positions in the network (not in the ends). This connector has a connection either for PROFIBUS network input and output, allowing module exchange without interrupting network activity.

AL-2602: DB9 connector and terminator with standard PROFIBUS pinout. It has inner components for network termination. It's suitable for connections between PROFIBUS networks and devices placed on the network ends.

AL-2605: This device is mounted at the ends of a PROFIBUS network and it eliminates the necessity for AL-2602 connectors. The AL-2605 module was developed for securing the PROFIBUS field network operation even if the modules placed at the network ends are shut down or removed. The product also verifies the fieldbus' power supply, diagnosing failures. It's suitable for any PROFIBUS field network where the reliability and availability are main requirements.

AL-2303: Cable for PROFIBUS network.

AL-2431 e AL-2432: Optical repeaters for PROFIBUS device interconnection through optical fiber. The AL-2432 module has redundancy in optical media, increasing system availability.

Compatibility with Other Products

NX5001 does not have any incompatibility with Nexto Series' modules as well as with MasterTool IEC XE programmer.

Table 2-6 indicates the compatibility of the main Altus' products with the NX5001 module.

	Software Version	Products Revision
PO5063	1.35 or above	DS or above
PO5063V1	2.07 or above	AV or above
PO5064	1.02 or above	AI or above
PO5063V5	5.07 or above	AV or above
PO5065	1.02 or above	AI or above
PO5063V4	4.35 or above	AU or above
ALT_059A.GSD	1.30 or above	-
ALT_0BAF.GSD	1.30 or above	-
ALT_0BB0.GSD	1.30 or above	-

Table 2-6. Compatibility

3. Configuration

Nexto Series brings to the user the software MasterTool IEC XE, a powerful tool which supplies a complete interface used to program all modules of the series.

ATTENTION:

It is not necessary using additional software for parameterization of the PROFIBUS network modules, neither a special cable is required, because all configurations and parameterizations are made, in a simple and easy way, directly in the MasterTool IEC XE programmer and sent to the Master PROFIBUS DP NX5001 through Nexto CPU.

The assembly of the PROFIBUS network configuration is made in MasterTool IEC XE, so it's necessary that the configuration files (.GSD) of all devices to be connected to the NX5001 master be available and installed.

ATTENTION:

The GSD file of NX5001, as well as GSDs from Ponto Series remotes, are already installed in the MasterTool IEC XE programmer, ready to be used.

In the example of Appendix A – Usage Example, details are supplied regarding:

- Assembly of PROFIBUS network configuration
- Mapping of Input and Output Points
- Mapping of Diagnostic Area

In Appendix B – GSD Installation, there is an example of GSD installation on MasterTool IEC XE programmer.

System Configuration

This chapter presents the possible configurations for the PROFIBUS network using the NX5001 interface.

Configuration A: Simple PROFIBUS network

This is the basic configuration. As it can be seen in the figure below, the NX5001 interface is connected to a Nexto Series CPU on the same bus and to the PROFIBUS slaves through a PROFIBUS network.

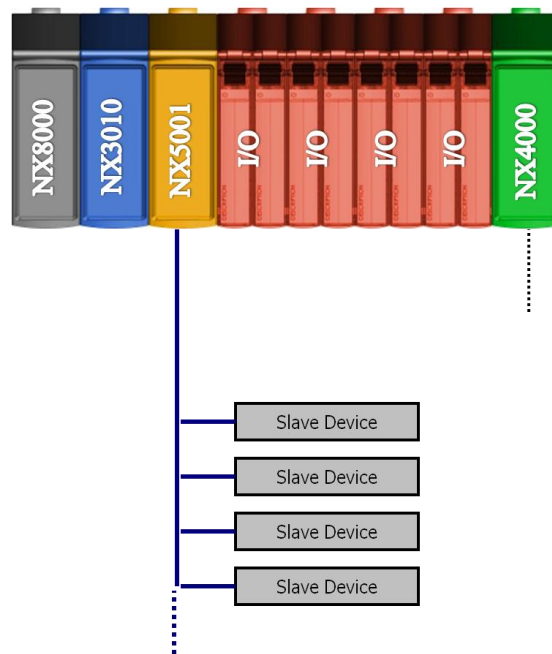


Figure 3-1. Configuration of a simple PROFIBUS network

Configuration B: Redundant PROFIBUS network

As shown on the figure below, the PROFIBUS network is redundant. In this case, two NX5001 are connected to a Nexto Series CPU in the same bus.

The redundant PROFIBUS network allows normal operation during a failure in one of the redundant networks, offering higher availability, which is required in critical applications.

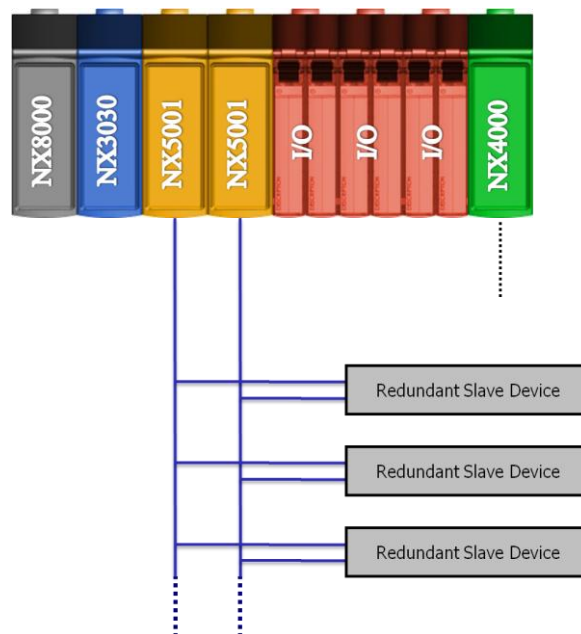


Figure 3-2. Configuration of a redundant PROFIBUS network

Configuration C: Two independent simple PROFIBUS networks

In this configuration, two NX5001 modules are connected to a Nexto CPU in the same bus. Each NX5001 is connected to an independent PROFIBUS network. In this case there's no redundancy. The architecture is seen in the figure below.

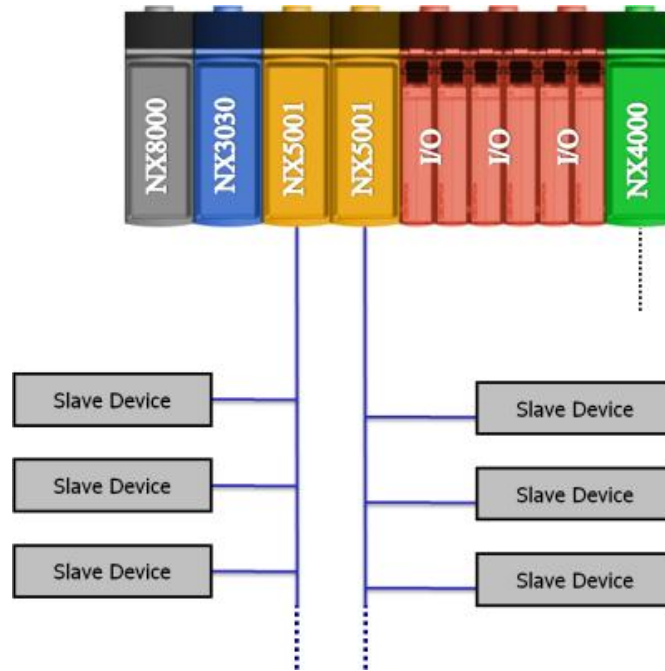


Figure 3-3. Configuration of two independent simple PROFIBUS networks

Configuration D: Two independent redundant PROFIBUS networks

This is the PROFIBUS master with the most complex configuration supported by the Nexto Series. It's the redundant version of configuration C. As shown on the figure below, there are two independent and redundant PROFIBUS networks.

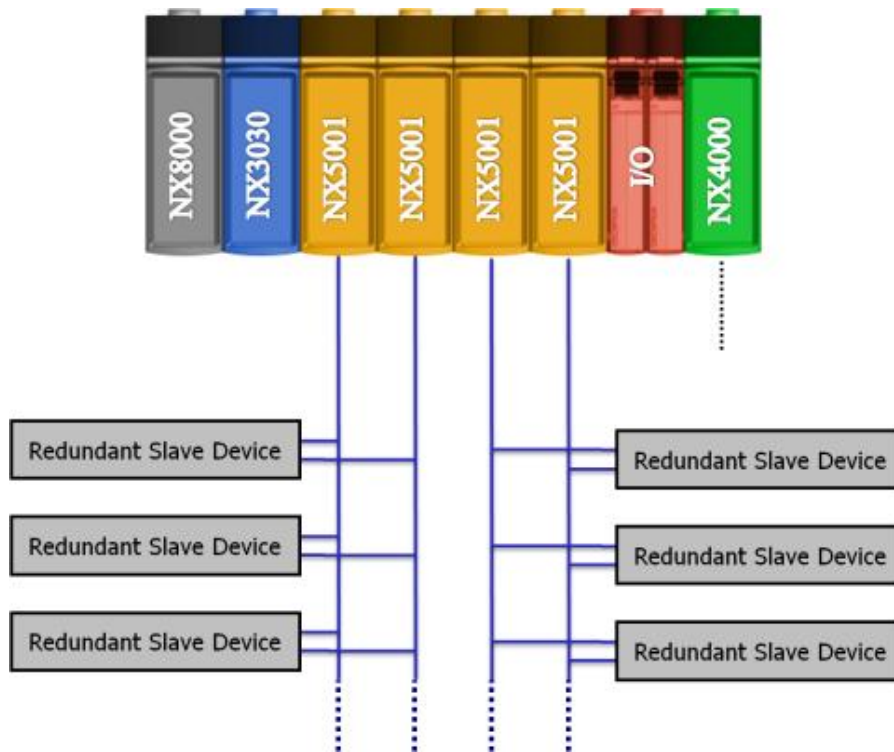


Figure 3-4. Configuration of two independent redundant PROFIBUS networks

Configuration E: Four independent simple PROFIBUS networks

Configuration E has four NX5001 connected to a Nexto CPU on the same rack. Each NX5001 is connected to an independent PROFIBUS fieldbus. In this case there's no redundancy. The architecture is shown below.

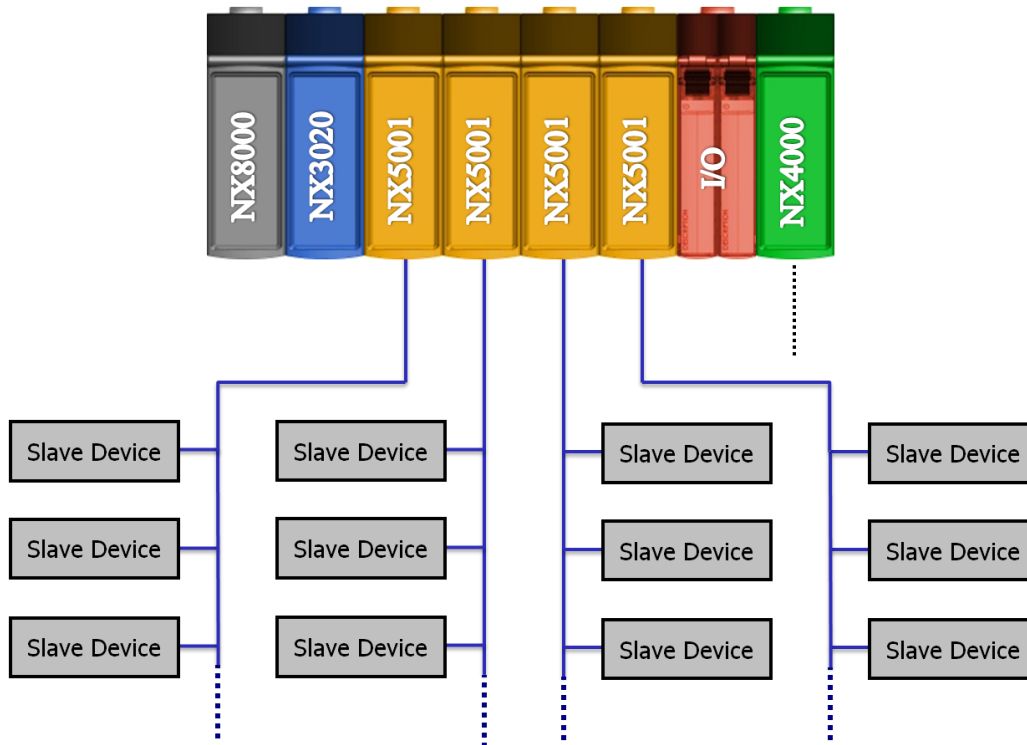


Figure 3-5. Configuration of four independent simple PROFIBUS networks

4. Diagnostics

One of the features of Nexto Series is the generation of diagnostics of abnormalities, being them failures, errors or operating modes, enabling the operator to identify and easily solve problems that may happen to the system.

Master NX5001 provides a complete diagnostic of the PROFIBUS network, as well as general diagnostics of module operation.

Diagnostics can be subdivided into four major groups:

- Module General Diagnostics
- PROFIBUS DP Master Diagnostics
- Network Redundancy Diagnostics
- Slave Devices Diagnostics

Diagnostics can be consulted by the user in the structure defined by the programmer MasterTool IEC XE (details in Diagnostics Mapping).

Memory area Offset (%QB(n)) allocated for the diagnostics of module NX5001 is defined by the user at its configuration screen, tab *Module Parameters* (further details in Master Parameters). This offset defines the first byte of general Diagnostics.

ATTENTION:

The data within the diagnostics structure are only valid when the NX5001 PROFIBUS DP Master is connected to the bus. In case it isn't detected by the CPU, General and Master diagnostics will be zeroed/set to False, while Network and Slave diagnostics will be kept in their last read value.

General Diagnostics

The Diagnostics set which form the General Diagnostics provide information to the user regarding the behavior of Master PROFIBUS DP NX5001 module.

Table 4-1 shows the description of each bit of General Diagnostics.

Direct Representation Variable		Diagnostic Message	AT Variable DG_modulename. tGeneral	Description
Variable	Bit			
%QB(n)	0..7	Reserved		
-	-	NO DIAG	-	There's no active diagnostics.
%QB(n+1)	0	-	bActiveDiagnostics	TRUE – Module has active diagnostics.
		-		FALSE – Module has not active diagnostics.
	1	MODULE W/ FATAL ERROR	bFatalError	TRUE – Module has a fatal error.
		-		FALSE – No fatal error.
	2	CONFIG. MISMATCH	bConfigMismatch	TRUE – Parameterization error.
		-		FALSE – Parameterization ok.
	3	WATCHDOG ERROR	bWatchdogError	TRUE – Watchdog detected.
		-		FALSE – Watchdog not detected.
	4	OTD SWITCH ERROR	bOTDSwitchError	TRUE – Module's OTD switch failure.
		-		FALSE – OTD switch ok.
	5	-	bBusCommunicationError	TRUE – Bus communication failure.
		-		FALSE – No errors in the bus communication.
6..7	Reserved			
%QB(n+2)	0..7	Reserved		

%QB(n+3)	0..7	Reserved		
%QB(n+4)	0	Reserved		
	1	ABSENT CONFIG.	bNX5001NoCfg	TRUE – NX5001 hasn't received configuration from the CPU.
		-		FALSE – NX5001 received configuration from the CPU.
	2..3	Reserved		
	4	-	bStsEnableInterface	TRUE - NX5001 was enabled by user command.
				FALSE - NX5001 was disabled by user command.
	5	Reserved		
	6	-	bStsMstRedundEnable	TRUE – Indicates there's master redundancy (control variable).
FALSE – Indicates the master redundancy isn't enabled (control variable).				
7	Reserved			
%QB(n+5)	0	PB SLAVE UNCONFIGURED	bSlaveNotConfigured	TRUE – There is at least one slave not parameterized.
		-		FALSE – All slaves are parameterized.
	1	PB SLAVE NOT PRESENT	bSlaveNotPresent	TRUE – There is at least one absent slave in the network.
		-		FALSE – All modules are connected to the field network.
	2	PB SLAVE W/ DIAG	bSlaveWithDiagnostic	TRUE – There is at least one slave with active diagnostics.
		-		FALSE – No slaves with active diagnostics.
	3..4	Reserved		
	5	COMM. FAILURE	bPbusCommFail	TRUE – PROFIBUS communication failure.
-		FALSE – PROFIBUS fieldbus is operational.		
6..7	Reserved			

Table 4-1. Module's General Diagnostics Variables description.

Notes

Direct Representation Variable: "n" is the address defined at %Q Start Address of Module Diagnostic Area, at the NX5001 module configuration screen – tab *Module Parameters* in MasterTool IEC XE.

AT Variable: the whole name of an AT variable is composed by DG_modulename.tGeneral. plus the variable name defined on the table above. Observe that modulename is the name used for the specific module. For reference, the default name given by MasterTool IEC XE is the product code (e.g. NX5001) or the code followed by n, where n is incremented at each new module. For instance: in order to access the NX5001 module's fatal error diagnostics, the following AT variable must be used: DG_NX5001.tGeneral.bFatalError.

Master Diagnostics

Master diagnostics informs the network's general status from the master's point of view, with an overview of active stations or PROFIBUS network error. If there is redundancy, each NX5001 module has its own diagnostics that are associated with different variables.

Diagnostics which indicate network conditions are in memory area between QB% (n+6) to QB% (n+12). Between QB% (n+14)% to QB (n+21) is the reserved memory area. Next is the memory area that presents the status of each of the network's slave devices (wether the device is configured, active or with diagnostic), between QB% (n+22)% to QB (n+69).

A summary of the description of each variable can be found in the table below.

Direct Representation Variable	AT Variable DG_NX5001. tPbDgMstStatus. *	Description
%QB(n+6)	tGlobalBits	Global errors
%QB(n+7)	byState	Master state

%QB(n+8)	byReserved02	Reserved
%QB(n+9)	byReserved03	Reserved
%QB(n+10)	wReserved04	Reserved
%QB(n+12)	wReserved06	Reserved
%QB(n+14) a	abyReserved[0] a	Reserved
%QB(n+21)	abyReserved[7]	
%QB(n+22) a	abySlv_Cfg	Network mapping: slave state and diagnostics
%QB(n+69)	abySlv_State abySlv_Diag	

Table 4-2. Master Diagnostics

Global Errors

Bits %QB (n+6) are used to indicate the main errors on bus and PROFIBUS master. The table below shows the description of each one of these bits.

Direct Representation Variable		AT Variable	Description
Variable	Bit	DG_NX5001.tPbDgMstStatus.tGlobalBits.*	
%QB(n+6)	0	bCtrlError	Configuration error: configuration in at least one of slave devices is different than the master's. This error is caused by incorrect parameterization.
	6.1		Reserved
	6.2	bNonExchangeError	At least one slave device is not communicating, or has notified a serious error
	6.3 a 6.7		Reserved

Table 4-3. Global Errors

Master States

Value displayed in %QB (n+7) represents operation mode of master NX5001. According to the table below it is possible to distinguish master operation states:

Direct Representation Variable		Variable AT	Description
Variable	Value (Hex)	DG_NX5001.tPbDgMstStatus.byState	
%QB(n+7)	00	OFFLINE	Master off.
	40	STOP	Master stopped.
	80	CLEAR	Master stopped with protected outputs.
	C0	OPERATE	Master operational.

Table 4-4. Master Operation Modes

Details on master's status are described at PROFIBUS Network User Manual - MU299026, or in the chapter Operation Modes.

Network Maps

This memory area is divided in the following way:

- %QB (n+22) to %QB (n+37): configured slaves area
- %QB (n+38) to %QB(n+53): present slaves area
- %QB (n+54) to %QB(n+69): slaves with diagnostics area

Map of Configured Slaves

In this map, it is possible to check which slaves were configured by the master.

Each bit is related to one slave. The format of this area can be observed below.

Direct Representation Variable	Bit							
	7	6	5	4	3	2	1	0
	Physical Addresses on PROFIBUS Network							
%QB(n+22)	7	6	5	4	3	2	1	0
%QB(n+23)	15	14	13	12	11	10	9	8
%QB(n+24)	23	22	21	20	19	18	17	16
%QB(n+25)	31	30	29	28	27	26	25	24
%QB(n+26)	39	38	37	36	35	34	33	32
%QB(n+27)	47	46	45	44	43	42	41	40
%QB(n+28)	55	54	53	52	51	50	49	48
%QB(n+29)	63	62	61	60	59	58	57	56
%QB(n+30)	71	70	69	68	67	66	65	64
%QB(n+31)	79	78	77	76	75	74	73	72
%QB(n+32)	87	86	85	84	83	82	81	80
%QB(n+33)	95	94	93	92	91	90	89	88
%QB(n+34)	103	102	101	100	99	98	97	96
%QB(n+35)	111	110	109	108	107	106	105	104
%QB(n+36)	119	118	117	116	115	114	113	112
%QB(n+37)			125	124	123	122	121	120

Table 4-5. Map of Slaves Configured by the PROFIBUS DP Master NX5001.

When the bit of the corresponding PROFIBUS slave is set to true, it means that this slave is configured in the *Device Tree* of MasterTool IEC XE programmer. If it remains false, it means that this slave has not been configured.

Map of Present Slaves

This map indicates which devices are present in the PROFIBUS network, that is, those that are being accessed by the master.

Each bit is related to one slave. The format of this area can be observed in the table below.

Direct Representation Variable	Bit							
	7	6	5	4	3	2	1	0
	Physical Addresses on PROFIBUS Network							
%QB(n+38)	7	6	5	4	3	2	1	0
%QB(n+39)	15	14	13	12	11	10	9	8
%QB(n+40)	23	22	21	20	19	18	17	16
%QB(n+41)	31	30	29	28	27	26	25	24
%QB(n+42)	39	38	37	36	35	34	33	32
%QB(n+43)	47	46	45	44	43	42	41	40
%QB(n+44)	55	54	53	52	51	50	49	48
%QB(n+45)	63	62	61	60	59	58	57	56
%QB(n+46)	71	70	69	68	67	66	65	64
%QB(n+47)	79	78	77	76	75	74	73	72
%QB(n+48)	87	86	85	84	83	82	81	80
%QB(n+49)	95	94	93	92	91	90	89	88
%QB(n+50)	103	102	101	100	99	98	97	96
%QB(n+51)	111	110	109	108	107	106	105	104
%QB(n+52)	119	118	117	116	115	114	113	112
%QB(n+53)			125	124	123	122	121	120

Table 4-6. Map of Present Slaves (Active) on PROFIBUS Network

When the bit of the corresponding PROFIBUS slave is set to true, it means that the master and the slave are exchanging data with each other (communication OK). If it remains false, it means that the master and slave are not exchanging data with each other (The device is not connected to the network or there is some kind of error.)

Map of Slaves with Diagnostics

In this map you can check which slave has active diagnostics.

Each bit is related with one slave. The format of this area can be observed below.

Direct Representation Variable	Bit							
	7	6	5	4	3	2	1	0
	Physical Addresses on PROFIBUS Network							
%QB(n+54)	7	6	5	4	3	2	1	0
%QB(n+55)	15	14	13	12	11	10	9	8
%QB(n+56)	23	22	21	20	19	18	17	16
%QB(n+57)	31	30	29	28	27	26	25	24
%QB(n+58)	39	38	37	36	35	34	33	32
%QB(n+59)	47	46	45	44	43	42	41	40
%QB(n+60)	55	54	53	52	51	50	49	48
%QB(n+61)	63	62	61	60	59	58	57	56
%QB(n+62)	71	70	69	68	67	66	65	64
%QB(n+63)	79	78	77	76	75	74	73	72
%QB(n+64)	87	86	85	84	83	82	81	80
%QB(n+65)	95	94	93	92	91	90	89	88
%QB(n+66)	103	102	101	100	99	98	97	96
%QB(n+67)	111	110	109	108	107	106	105	104
%QB(n+68)	119	118	117	116	115	114	113	112
%QB(n+69)			125	124	123	122	121	120

Table 4-7. Map of Slaves with Diagnostics

When the bit of the corresponding PROFIBUS slave is set to true, it means that there are diagnostics to be read and it is found in its respective diagnostic structure. If it remains false, it means that there's no diagnostics.

ATTENTION:

In case the slave sends extended diagnostics, the bit corresponding to the slave's address will be true.

Map's Logical Meaning

The result of two bits combination (present and with diagnostic) from a device is shown in the following table.

	Present = False	Present = True
With Diagnostic = FALSE	<ul style="list-style-type: none"> There is no data exchange between master and slave device. Check if slave device is configured and active. 	<ul style="list-style-type: none"> Slave device is present in the network. There is data exchange between master and slave device.
With Diagnostic = TRUE	<ul style="list-style-type: none"> There is no data exchange between master and slave device. Master has device diagnostics, which can be read in the area of device diagnostics. 	<ul style="list-style-type: none"> Slave device is present in the network. There is data exchange between master and slave device. Master has device diagnostics, which can be read in the area of device diagnostics.

Table 4-8. Result of the Combination of Presence and Diagnostics Bits of a Slave

Network Redundancy Diagnostics

Network redundancy diagnostics is only generated if there is redundant operation. Each NX5001 module updates its own part on the memory area specified for this purpose at MasterTool IEC XE configuration.

The diagnostics is presented as a set of bits, one for each physical address of the network, by specifying which redundant device is currently active in the network at the moment.

It is possible to view slave status also through structure DG_NX5001.tActivNtw.bSlave_x, where "x" is the slave address in the PROFIBUS network. Its value ranges from 0 to 125.

When the corresponding slave bit is true, it means that it is the pair's active slave.

Direct Representation Variable	Structure	Physical Address on Network
	DG_NX5001.tActivNtw.*	
%QB(n+70)	bSlave_0 a bSlave_7	7 6 5 4 3 2 1 0
%QB(n+71)	bSlave_8 a bSlave_15	15 14 13 12 11 10 9 8
%QB(n+72)
%QB(n+73)
%QB(n+74)
%QB(n+75)
%QB(n+76)
%QB(n+77)
%QB(n+78)
%QB(n+79)
%QB(n+80)
%QB(n+81)
%QB(n+82)
%QB(n+83)
%QB(n+84)	bSlave_112 a bSlave_119	119 118 117 116 115 114 113 112
%QB(n+85)	bSlave_120 a bSlave_125	125 124 123 122 121 120

Table 4-9. Network Redundancy Diagnostic

ATTENTION:

The diagnostics can indicate the device as active or passive in both networks, simultaneously, during a transition (or switchover). This can happen because information for diagnostic are sent by different networks, and also copied in different times. After the switchover, the diagnostics are stable.

Diagnostics of Slave Devices

This chapter brings an overview of the diagnostics format generated by PROFIBUS slaves, and details on the diagnostics generated to PROFIBUS heads of Ponto Series and other PROFIBUS slaves.

PROFIBUS Diagnostics

Diagnostics of slave devices shows in detail the error situation in a particular slave.

The diagnostics of the network's devices are automatically copied by the NX5001 master to the defined memory area. This area is populated by the existing diagnostics present on the network as they are generated by the slave devices.

For a redundant network, both NX5001 masters can copy device diagnostics to the same area.

The general format of a diagnostics generated by a PROFIBUS slave will be detailed below at the sections Standard Diagnostics and Extended Diagnostics, and they comply with the following format:

Byte	Meaning
0	Status 1
1	Status 2
2	Status 3
3	Status 4
4	Status 5
5	Status 6
6 – 243	Extended Diagnostics

Table 4-10. Format of PROFIBUS Diagnostics Frame

Standard Diagnostics

The standard diagnostics, defined by norm, consists of 6 bytes and is independent of manufacturer or slave device.

The following table shows the description of the diagnostic bits generated by the modules:

Direct Representation Variable		Description
Variable	Bit	
%QB(n)	0	Station_non_Existent TRUE: the slave was not found in the network.
	1	Station_Not_Ready TRUE: slave is not ready for communication.
	2	Cfg_Fault TRUE: indicates that slave configuration is different from the configuration present in the master.
	3	Ext_diag TRUE: indicates that the slave has a message of extended diagnostic to be read by the master.
	4	Not_Supported. TRUE: indicates that the slave received a non supported command.
	5	Invalid_Slave_Response. TRUE: indicates that the slave answer to the master was not recognized.
	6	Parameter_fault. TRUE: indicates that there was an error sending the parameters to the slave.
	7	Master Lock. TRUE: indicates that the slave was parameterized by other master.
%QB(n+1)	0	Prm_Req. TRUE: turned on by the slave to inform that it must be parameterized and configured.
	1	Static_Diagnostic. TRUE: turned on by the slave to inform that the diagnostic shall be read by the master.
	2	Always turned on by the slave (TRUE).
	3	Watchdog_On. TRUE: turned on by the slave when activating its watchdog.
	4	Freeze_mode. TRUE: turned on by the slave when receiving the command Freeze.
	5	Sync_Mode. TRUE: turned on by the slave when receiving the command Sync.
	6	Reserved.
	7	Deactivated.

		TRUE: slave was stated as inactive in parameterization.
%QB(n+2)	0	Reserved.
	1	Reserved
	2	Reserved
	3	Reserved
	4	Reserved
	5	Reserved
	6	Reserved
	7	Ext_Diag_Overflow. TRUE: Turned on if information of extended diagnostic from the slave overcame the size defined in GSD (Ext_Diag_Data).
%QB(n+3)		Master_Add. Address of master which parameterized the slave. In case no master has parameterized the slave, the value stays in 255.
%QB(n+4) e %QB(n+5)		Ident_Number. Identifier of slave device (device number, as registered on PROFIBUS Committee).

Table 4-11. Standard Diagnostics for Slave Device

Extended Diagnostics

The following bytes describe in detail the situation in the slave. This level of detail varies according to the slave device and/or manufacturer.

If the slave sends the extended diagnostic, the bit **Ext_Diag** is turned on.

Extended diagnostics can be subdivided into three parts:

1. Device oriented diagnostics
2. Module oriented diagnostics
3. Channel oriented diagnostics

Device Oriented Diagnostics

Device oriented diagnostic is the first part of extended diagnostics. Its function is to identify the situation on the device.

Its format is particular for each device (see device manual) and it has an overhead, as shown in the Table 4-12.

Direct Representation Variable		Description
Variable	Bit	
%QB(n+6)	6.0	Fixed in zero (FALSE).
	6.1	Fixed in zero (FALSE).
	6.2 a 6.7	Overhead. Block size in bytes, including overhead.
%QB(n+7) . . .		Diagnostic bytes specific of the device.

Table 4-12: Device Oriented Diagnostic

Module Oriented Diagnostics

The format of this part of the diagnostic can be seen in standard EN 50170.

This diagnostic indicates which sub-modules and channels have diagnostics, its detailing is done in the channel oriented diagnostic.

If a module oriented diagnostic is zeroed (status OK on all channels), the number of channel diagnostics is zero.

Channel Oriented Diagnostics

Each channel diagnostic occupies three bytes, with the following format:

Direct Representation Variable		Description
Variable	Bit	
1 ^o Octet	0 a 5	identifier: indicates sub-module number.
	6	FALSE: Fixed in zero (FALSE).
	7	TRUE: Fixed in one (TRUE).
2 ^o Octet	0 a 5	Channel number: indicates channel number on sub-module.
	6 e 7	I/O: indicates the direction: 00 – reserved 01 – input 10 – output 11 – input and output
3 ^o Octet	0 a 4	Error Type: see Table 4-14.
	5 a 7	Channel Type: see Table 4-15.

Table 4-13: Channel Oriented Diagnostic

Error Type	Description
0	Reserved
1	Short-circuit
2	Undervoltage
3	Overvoltage
4	Overload
5	Over temperature
6	Open lace
7	Higher limit exceeded
8	Lower limit exceeded
9	Error
10	Reserved
-----	.
15	Reserved
16	Specific from manufacturer
-----	...
31	Specific from manufacturer

Table 4-14: Error Type

Channel Type	Description
000	Reserved
001	1 bit
010	2 bits
011	4 bits
100	1 byte
101	1 word
110	2 words

Table 4-15: Channel Type

For further details on the diagnostic device, refer to EN50170 standard and the manufacturer's manual of slave device.

For PROFIBUS heads of Ponto Series, diagnostics are decoded from PROFIBUS format for bit map and are displayed to the user in %QB variables, and predefined structures, as documented in the manuals and CEs of the modules that constitute your network.

ATTENTION:

For slaves of Ponto Series, MasterTool IEC XE programmer provides:

- Decoded diagnostics according to the format described in manuals and CEs;
- Symbolic structures for decoded bits (details in Diagnostics Mapping).

For the other slaves, 244 bytes are allocated, and they follow the pattern of diagnostic frame of a PROFIBUS slave.

ALTUS Slaves – Ponto Series

For PROFIBUS heads of Ponto Series, diagnostics are decoded and displayed in bit map format, as described in the chapters *Diagnostic* of PROFIBUS heads' manuals and the CEs of the modules that constitute the slave bus.

MasterTool IEC XE programmer provides pre-defined symbolic structures for diagnostic of PROFIBUS heads from Ponto Series and their modules, as can be seen in Diagnostics Mapping in chapter 9. Appendix A – Usage Example.

The Table 4-16 shows an example of diagnostics decoding for PROFIBUS heads from Ponto Series. To ease the interpretation, information is always omitted from Module Oriented Diagnostic.

The first byte indicates the physical address in the network of the device that originated the diagnostic (value between 0 and 125).

The next bytes contain the head diagnostics and other diagnostics of modules that constitute your network.

The head diagnostics are formed by two clusters of 12 bytes each. The 12 first have the A network head information, and the following 12 have the B network information.

ATTENTION:

For non redundant slaves, the diagnostics will be available in the A network variables.

Direct Representation Variable	Description	Network
Variable		
%QB(n)	Physical address on network of slave device with diagnostics.	-
%QB(n+1)	Number of diagnostic bytes.	A
%QB(n+2)	Programmed parameters.	
%QB(n+3)	Sustaining time without master.	
%QB(n+4)	Time of module startup after hot swap.	
%QB(n+5)	Head current status.	
%QB(n+6)	General diagnostics.	
%QB(n+7)	Reserved.	
%QB(n+8)	System general status.	
%QB(n+9)	Status of modules 0 . . . 7.	
%QB(n+10)	Status of modules 8 . . . 15.	

%QB(n+11)	Status of modules 16 . . . 19.	B
%QB(n+12)	Address key value.	
%QB(n+13)	Number of diagnostic bytes.	
%QB(n+14)	Programmed parameters.	
%QB(n+15)	Sustaining time without master.	
%QB(n+16)	Time of module startup after hot swap.	
%QB(n+17)	Head current status.	
%QB(n+18)	General diagnostics.	
%QB(n+19)	Reserved.	
%QB(n+20)	System general status.	
%QB(n+21)	Modules 0 . . . 7 state.	
%QB(n+22)	Modules 8 . . . 15 state.	
%QB(n+23)	Modules 16 . . . 19 state.	
%QB(n+24)	Address key value.	
%QB(n+25)	From this byte on, the PROFIBUS network head diagnostics are placed. 10 bytes for diagnostics are allocated for each module. So the total amount of bytes is the number of modules multiplied by 10. Details of the modules' diagnostics can be seen in the Diagnostics chapter in their respective CEs.	-

Table 4-16: Diagnostics Example of Ponto Series.

Other PROFIBUS Slaves

For other PROFIBUS slaves, the MasterTool IEC XE programmer provides diagnostics according to the Table 4-10.

The first 6 bytes are copies of the standard diagnostics from a PROFIBUS frame, common to any module, from any manufacturer.

Extended diagnostics provided by the PROFIBUS slave are allocated over the next 238 bytes.

There are no pre-defined structures for these slaves, data are allocated only in %QB variables, as can be seen in Diagnostics Mapping, chapter 9. Appendix A – Usage Example.

NX5001DgDecodSlvGeneric.library – Decoder

It is possible to decode extended diagnostics to PROFIBUS heads which are not from Ponto Series using library *NX5001DgDecodSlvGeneric.library* provided by the MasterTool IEC XE programmer.

This library is used to decode the diagnostics of the slave from PROFIBUS format to bit map.

Output data format follows the following mapping:

- Byte 0-5: Contains information of the 6 leading bytes (Standard Diagnostics).
- Byte 6-45: Contains device diagnostics.
- Byte 46 to 8237: Contains channel diagnostic, as per module. For each channel, 4 bytes (Dword) are allocated, where each bit represents the value of a code, that is, indicates codes from 1 (bit 0) up to 32 (bit 31).

5. User Commands

When adding a PROFIBUS DP master NX5001 device to the bus configuration, MasterTool IEC XE programmer maps %QB (n) variables in the tab *Nexto Bus I/O Mapping*, used to trigger commands to the master device.

User Commands supported by Master PROFIBUS DP NX5001 are:

Direct Representation Variable		Description
Variable	Bit	
%QB(n)	0	TRUE: Enables PROFIBUS communication
		FALSE: Disables PROFIBUS communication
	1	Reserved for internal use
%QB(n+1)	2 a 7	Reserved Initial value: FALSE
	1.0 a 1.7	Reserved Initial value: FALSE

Table 5-1: Description of User Commands

Project with Redundancy and User Commands

In projects where there's half-cluster redundancy, i.e. where there's PROFIBUS master redundancy, the user commands has the redundancy logic action influence, thus the redundancy logic acts on these bits.

Figure 5-1 has a sample code to be applied by the user to avoid that his/her commands interfere with the redundancy logic.

This logic applies to the PROFIBUS communication enable bit, whenever it's necessary a PROFIBUS redundant head switchover, e.g. in a maintenance procedure, where all active slaves must be in a single network.

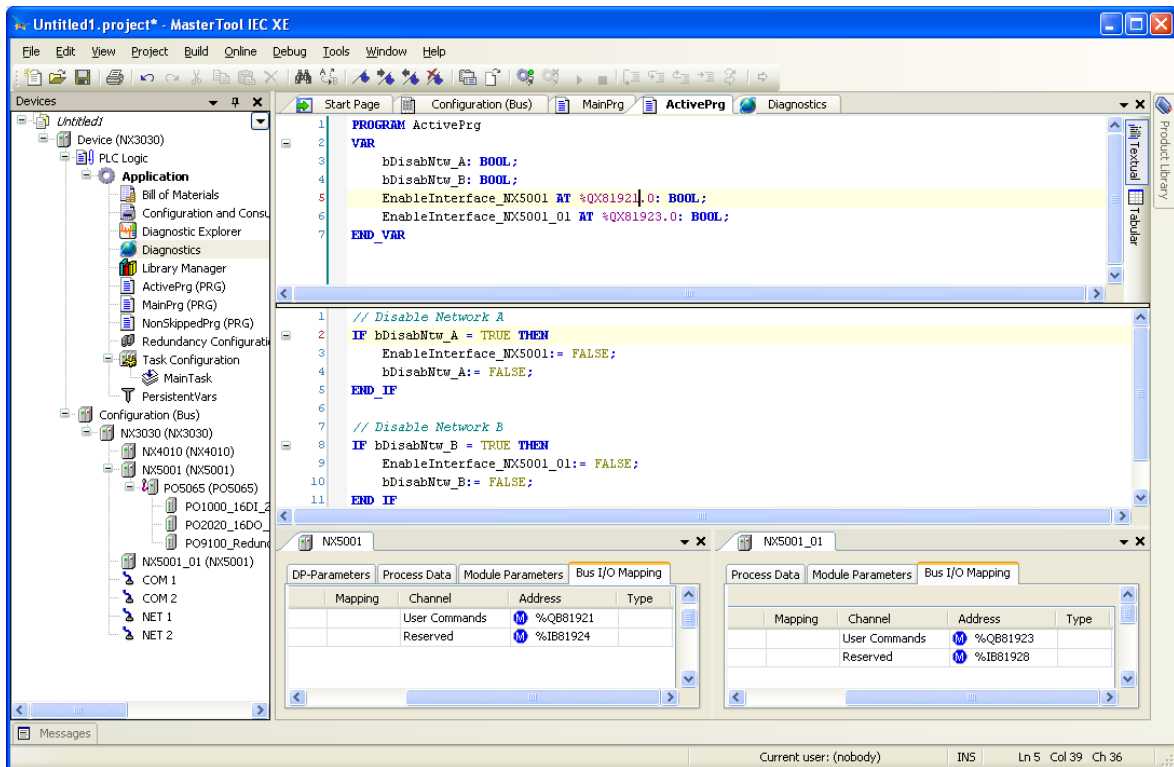


Figure 5-1. Example Code for Redundant Slaves Switchover Execution

At disabling the communication of one NX5001 PROFIBUS DP master the communication with its PROFIBUS slaves is ceased. In case there are active slaves in the network, a PROFIBUS heads switchover will happen to another network, as the other NX5001 will continue to communicate.

On the next cycle, the redundancy logic will act and will enable again the NX5001 previously disabled by the example code and its redundant slaves will act as stand-by slaves.

6. Installation

This chapter presents procedures for installation of network interface PROFIBUS NX5001.

Mechanical Assembly

Mechanical assembly of this module is described in Nexto Series User Manual - MU214600.

The module can be installed anywhere in the bus, after the CPU. If a pair of modules is redundant, they must be placed side by side.

Module(s) NX5001 must be declared at the CPU bus through the MasterTool IEC XE, in the desired positions.

Electrical Installation

DANGER:
When performing any installation of an electrical panel, make sure that its power source is **TURNED OFF**.

The backplane rack installation can be seen on the figure below:

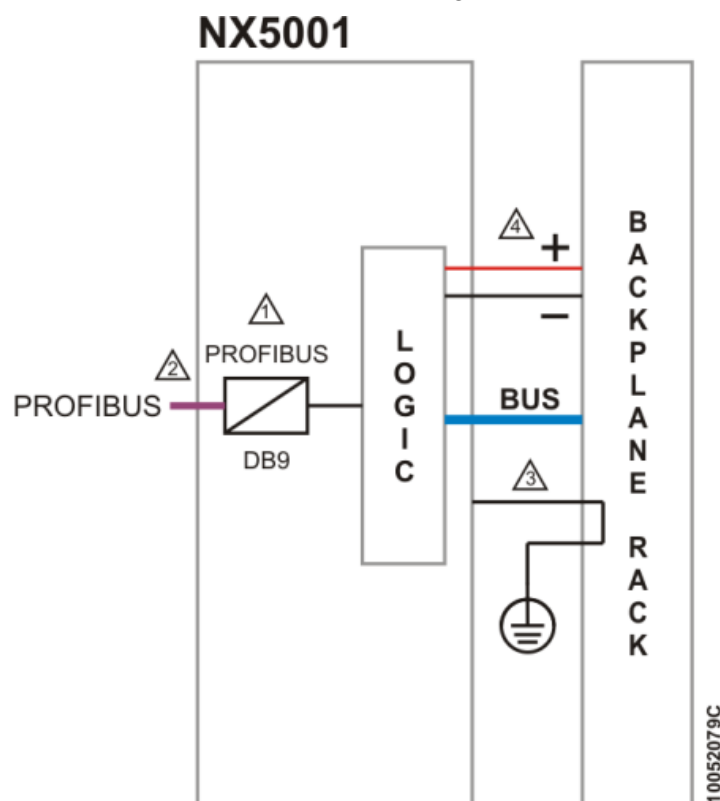


Figure 6-1. Electrical Diagram from Master PROFIBUS DP NX5001

Diagram Notes

- 1 - Standard interface for connection to PROFIBUS networks. Pin 1 of DB9 connector is connected to the protection ground of the Nexto Series rack.
- 2 – Use the supplied AL-2303 cable for PROFIBUS network and one of the following connectors:
 - AL-2601 is a connector for PROFIBUS network without internal termination. It can be used to connect any PROFIBUS equipment in a position in which the termination is not required.
 - AL-2602 is a connector for PROFIBUS network with internal termination. It must be used in equipments located at the ends of the PROFIBUS network. Altus also offers a second option for networks where reliability and availability key requirements. For these cases, module AL-2605 should be used in each end of the network and

all PROFIBUS modules should use unterminated connectors (AL-2601). More information about AL-2605 module can be found in the document CE104705.

It is mandatory the use of two PROFIBUS network terminations. Each termination should be placed at each end of the network.

3 - Module is grounded through the rack of Nexto Series.

4 – The NX5001 module is powered by the power supply connected to the same series Nexto rack not requiring external power source.

Installation of the PROFIBUS Network

The installation of the PROFIBUS network should be performed according to the standard EN50170. Cable and connectors used in installation can be purchased from Altus:

- AL-2601: Derivator connector PROFIBUS
- AL-2602: Terminator connector PROFIBUS
- AL-2605: Terminator with source diagnostics
- AL-2303: Cable PROFIBUS

ATTENTION:

Addressing errors in slave devices are hard to identify. The PROFIBUS network may not detect errors when two slaves have the same address and some meters of network cable apart. It is recommended to check the addressing keys of each device before network activation.

Module Hot Swap

NX5001 module can be hot swapped. However, as it is a network interface, some cautions must be taken to make the swap in a safe way for the devices connected to it.

DANGER:

Before performing a hot swap, it's important to unload eventual static energy accumulated in the body. For that, touch (with your bare hands) a metallic grounded surface before handling the modules. Such procedure guarantees the static level supported by the module won't be exceeded.

ATTENTION:

- It's recommended the monitoring of the hot swap diagnostics in the control application developed by the user, in order to guarantee that the value returned by the module is validated before used.
- For further information regarding this resource, see Nexto Series User Manual - MU214600.

The procedure for hot swap of NX5001 requires the following cautions:

- Disconnect network cable: disconnecting the cable prevents network communications. CPU will keep the last read values for inputs, and outputs will be in safe mode.
- Unlock the module by pressing the fixation lock.
- Remove the module by pulling firmly.
- Insert the new module in the rack.
- Make sure that the fixation lock is completely locked to the rack. If not, push the module a little harder towards the rack.
- Configure, if necessary, the module with MasterTool IEC XE.
- Reconnect the PROFIBUS cable, reestablishing communication.

7. Operation

This chapter presents general information regarding operation modes, NX5001 PROFIBUS DP master, PROFIBUS bus and CPU.

Operation Modes

Table 7-1 describes the PROFIBUS network behavior according to the NX5001 PROFIBUS DP Master operation mode:

NX5001 Operation Modes	Description
OFFLINE	There's no communication in the PROFIBUS bus.
STOP	There's no communication between Master and Slaves. There's only data exchange between the Masters connected to the network.
CLEAR	The Master reads inputs and Slave diagnostics and the outputs' states are defined by the PROFIBUS head.
OPERATE	The Master is on full data exchange stage. On each cyclic data communication, the Master sends the output points data (output writing) to the slaves and receives the input data (input reading). The slave diagnostics messages are also received.

Table 7-1. NX5001 Operation Modes

Output State

Table 7-2 relates the CPU's operation state with the module output points' states configured in the PROFIBUS slave bus.

CPU Operation State	Output Points States (PROFIBUS slaves)
RUN	Points are updated according to the application.
STOP	The state of the points is defined by the PROFIBUS head.
BREAKPOINT	The state is frozen and updated according to the application execution.

Table 7-2. Update of Slaves' Output Points according to CPU State.

8. Maintenance

This chapter brings information about general care, common problems found by the user and the procedures to be taken in case of errors.

Module Diagnostics

One of the features of the Nexto Series is the generation of irregularities diagnostics such as failures, errors or operating modes, enabling the operator to easily identify and solve problems that may happen to the system.

Nexto Series offers five important resources to assist the user during maintenance: Electronic Tag on Display, One Touch Diag, state and diagnostics indicators, HTML page with complete state list and diagnostic and status mapped in internal memory.

Electronic Tag on Display

This is an important resource that allows the user to check the name (tag) and description that were previously defined in MasterTool IEC XE of any I/O channel or module directly on CPU display. This resource can be extremely useful when the user need to check the function of a particular point or module before connect or disconnect it from the system.

To verify the name (tag) of an I/O of a module, select any I/O point or module information by pressing quickly (less than 1s) the diagnostics button. After selecting the module or a specific I/O point, the CPU will display the name (tag) and diagnostic information related to the point or module. To access the description of the item or the module previously selected, just press the module's diagnostics button for longer than 1s.

Further information about this resource can be found in the Nexto Series User Manual - MU214600 and at Nexto Series CPUs User Manual – MU214605.

One Touch Diag

This is another innovative resource of Nexto Series. With this new concept, the user can verify the diagnostics of NX5001 or any other module present in the system, directly from the graphical display on CPU (no diagnostic codes) with just one touch on diagnostic button of corresponding module. "OTD" is a powerful tool that can be used offline (without supervisory application or programmer), making the process of locating and solving problems more effective and faster.

Further information about this resource can be found in the Nexto Series User Manual - MU214600.

Displayed messages are listed on Table 4-1 under General Diagnostics.

Status and Diagnostics Indicators

All slave modules of Nexto Series have a display with the following symbols: D, E, |0|, |1| and numerical characters. The state of the symbols D, E, |0|, |1| are common to all slave modules from Nexto Series and can be found in the table below.

D	E	Description	Cause	Solution	Priority
Off	Off	Disconnected modules or display failure	-	Verify that the module is completely connected to the rack and if the rack is powered by an external source.	-
On	Off	Normal use	-	-	9 (Lower)
Flashing 1x	Off	Active Diagnostics	There is at least one active diagnosis related to NX5001 module	Check which is the active Diagnostics. More information can be found in the	8

				Maintenance section of this document	
Flashing 2x	Off	CPU in STOP mode	-	Check if the CPU is in RUN mode. More information can be found in the documentation of the CPU.	7
Flashing 3x	Off	Reserved	-	-	6
Flashing 4x	Off	Non fatal fault	Failure in some hardware or software component, which does not have impact on the basic functionality of the product	Check the module diagnostic information. If it is a hardware fault, provide the replacement of this part. If it is a software fault, please contact the Technical Support	5
Off	Flashing 1x	Parameterization error	NX5001 is not parameterized or not received new parameterization	-	4
Off	Flashing 2x	Master loss	Loss of communication between the module and the CPU	Verify that the module is completely connected to the rack. Check if the CPU is in RUN mode.	3
Off	Flashing 3x	Reserved	-	-	2
Off	Flashing 4x	Fatal hardware error	-	-	1 (Higher)

Table 8-1. Status of Symbols D and E

Notes:

Hardware total failure: If this failure happens, please, contact Altus support.

Segments |0| and |1| are usually switched off, however, when the module is in diagnostics mode (Electronic Tag on Display and One Touch Diag), these two segments start flashing.

Numerical characters are not used by NX5001 module.

Diagnostic LEDs

PROFIBUS DP Master NX5001 has two LEDs in its front panel to indicate diagnostics related to the PROFIBUS interface:

LED ST: green

LED ER: red

LED ST	LED ER	Meaning	Causes
Off	Off	Module Off Hardware Failure	<ul style="list-style-type: none"> No power supply. Hardware failure.
On	Off	Slave communication established.	<ul style="list-style-type: none"> All slave communications were reestablished.
On	Flashing	There are present and absent slaves in the PROFIBUS network.	<ul style="list-style-type: none"> Some PROFIBUS slaves are exchanging I/O data with NX5001, others aren't. PROFIBUS termination problem.
Off	On	No activity in the PROFIBUS network.	<ul style="list-style-type: none"> Loss of communication with all slaves. PROFIBUS network cable not connected. PROFIBUS network damaged. PROFIBUS termination problem.
Flashing	Off	NX5001 received configuration.	<ul style="list-style-type: none"> NX5001 has received the CPU configuration, but the

			communication wasn't enabled by the application.
Flashing 4x	Off	NX5001 isn't unconfigured.	<ul style="list-style-type: none"> NX5001 hasn't received the slave and the PROFIBUS bus configuration from the CPU.
On	On	NX5001 initialization.	<ul style="list-style-type: none"> NX5001 was connected to the Nexto bus, or restarted.

Table 8-2. LED ST and ER

HTML Page with Complete Status and Diagnostics List

Another way to access diagnostic information is via an HTML page. The Nexto Series CPU has built in HTML page server that provides all status and diagnostics information about the system. These pages can be accessed using a simple browser.

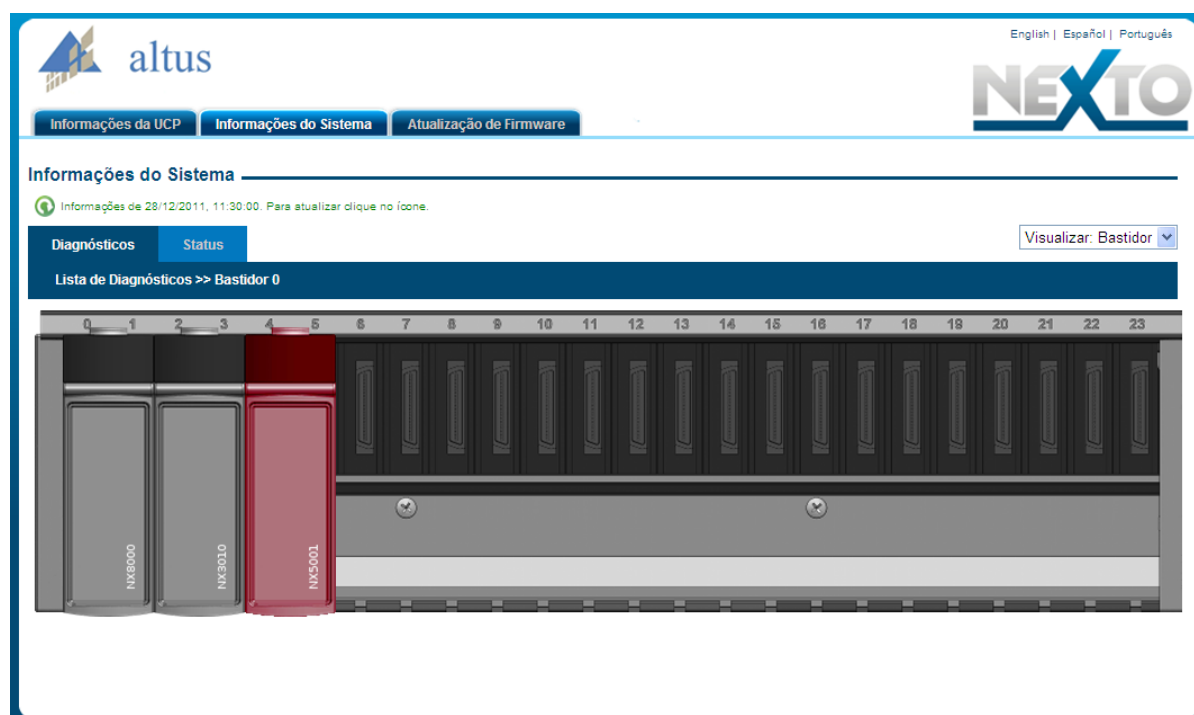


Figura 8-1. Webpage

Further information about this resource can be found in the Nexto Series User Manual - MU214600.

The list of diagnostic messages displayed by HTML page can be found on Table 4-1.

The following messages can be seen on *Status* tab from HTML page:

Message	Meaning
CONFIG - Modules has active diagnostics	Master module PROFIBUS DP NX5001 has some diagnostics.
CONFIG – There aren't active diagnostics	Master module PROFIBUS DP NX5001 hasn't active diagnostics.
CONFIG – Module in non-operational state	Master module PROFIBUS DP NX5001 isn't in normal functioning.
CONFIG - Module in operational State	Master module PROFIBUS DP NX5001 is in normal operation.
CONFIG – There is an error in module configuration	There're configuration and/or parameterization errors in the PROFIBUS DP NX5001 Master.
CONFIG – There aren't errors in module configuration	The PROFIBUS DP NX5001 Master configuration was completed successfully.
INT – Module reset occurred due to watchdog	The PROFIBUS DP NX5001 Master was restarted by the watchdog logic action.

INT – No reset due to watchdog	The PROFIBUS DP NX5001 Master wasn't restarted by the watchdog logic action.
INT – One Touch Diag switch is not operational	Failure in the diagnostics button in the PROFIBUS DP NX5001 Master.
INT – One Touch Diag switch is operational	There isn't any failure in the diagnostics button in the PROFIBUS DP NX5001 Master.
CONFIG – There is at least one PROFIBUS slave without configuration	There's at least one PROFIBUS slave not configured in the <i>Device Tree</i> in the MasterTool IEC XE programmer. It's necessary to consult the NX5001 diagnostics structure to identify which slave isn't configured (for further details, see Master Diagnostics, Configured Slaves Map).
CONFIG - There aren't PROFIBUS slaves without configuration.	All PROFIBUS slaves were configured in the <i>Device Tree</i> in the MasterTool IEC XE programmer.
CONFIG – There is at least one PROFIBUS slave missing.	The PROFIBUS DP NX5001 Master module isn't exchanging data with at least one slave (DataExchange command). The slave device may be connected incorrectly to the PROFIBUS network, or has a major failure. It's necessary to see the NX5001 diagnostic structure to identify which slave is absent (details can be found in Master Diagnostics, Map of Present Slaves).
CONFIG – There aren't PROFIBUS slaves missing	The PROFIBUS DP NX5001 Master module is exchanging data (DataExchange command) with all slaves.
CONFIG – There is at least one PROFIBUS slave with active diagnostics	There is at least one PROFIBUS slave with active diagnostics. It's necessary to see the NX5001 diagnostic structure to identify which slave has active diagnostics (details can be found in Master Diagnostics, Map of Slaves with Diagnostics).
CONFIG – There aren't PROFIBUS slaves with active diagnostics	There isn't PROFIBUS slaves with active diagnostics.
CONFIG – There is an error condition in PROFIBUS fieldbus communication	There is failure in the Profibus NETWORK communication. The PROFIBUS bus termination must be checked, together with the cable connection and the slave parameterization.
CONFIG – The PROFIBUS fieldbus communication is operational	There isn't failure in the Profibus NETWORK communication.
CONFIG – The module has not been initialized with parameters	The NX5001 hasn't received the bus and/or slave configuration from the CPU.
CONFIG – The module has been initialized with parameters	The NX5001 has received the bus and/or slave configuration from the CPU.
CONFIG – Module is enabled by user command	The PROFIBUS DP NX5001 Master module was enabled by application, in other words, the BIT0 from the <i>User Control Variable</i> is in logic level 1.
CONFIG – Module is disabled by user command	The PROFIBUS DP NX5001 Master module was disabled by application, in other words, the BIT0 from the <i>User Control Variable</i> is in logic level 0.
REDUND – The PROFIBUS master redundancy is enabled	The PROFIBUS DP NX5001 Master redundancy is enabled, in other words, a project was created with the option redundancy configuration equal to <i>With Redundancy</i> .
REDUND – The PROFIBUS master redundancy is disabled	The PROFIBUS DP NX5001 Master redundancy is disabled, in other words, a project was created with the option redundancy configuration equal to <i>No Redundancy</i> .
CONFIG – PROFIBUS master operation mode: OFFLINE	The PROFIBUS DP NX5001 Master module is in OFFLINE operation mode.
CONFIG - PROFIBUS master operation mode: STOP	The PROFIBUS DP NX5001 Master module is in STOP operation mode.
CONFIG - PROFIBUS master operation mode: CLEAR	The PROFIBUS DP NX5001 Master module is in CLEAR operation mode.
CONFIG - PROFIBUS master operation mode: OPERATE	The PROFIBUS DP NX5001 Master module is in OPERATE operation mode.

Table 8-3. List of Status Messages of NX5001 displayed on WEB server

Status and Diagnostics Mapped in internal Memory

Information about the module's state can also be obtained through diagnostics readings in MasterTool IEC XE and supervisory systems or IHMs.

In some cases, the diagnostics indication through internal variables can be more specific than through the LEDs or the display, since the latter allows only four types of indication (from one to four blinks). Since in the diagnostics, a large amount of information can be accessed.

For modules such as PROFIBUS network field head, diagnostic information is also sent to the PROFIBUS master equipment.

Preventive Maintenance

- Every year it should be checked if interconnection cables are tight with no dust deposits, especially protection devices.
- In places exposed to excessive contamination, the equipment should be periodically cleaned, removing waste, dust, etc.
- Varistors used for protection against transients caused by lightning should be inspected periodically as they may be damaged or destroyed if they absorb more energy than their capacity. In many cases, the failure may not be obvious or easily visible. In critical applications, we recommend periodic replacement of varistors, even those which do not show visible signs of failure.

9. Appendix A – Usage Example

Architecture

The following example demonstrates how to use the NX5001 module to control a simple PROFIBUS network, consisting of two PROFIBUS slave devices.

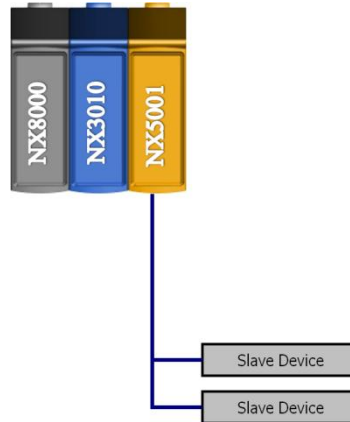


Figure 9-1. Example of Network to be configured

The first slave device is a PO5063 head with four I/O modules. The second slave device is a PO5064 head with two I/O modules.

Project Creation

The first step is to create a new project for the NX3010 CPU using the MasterTool IEC XE programmer, as described in the MasterTool IEC XE Programming Manual - MU399609, chapter 4.Quick Initialization.

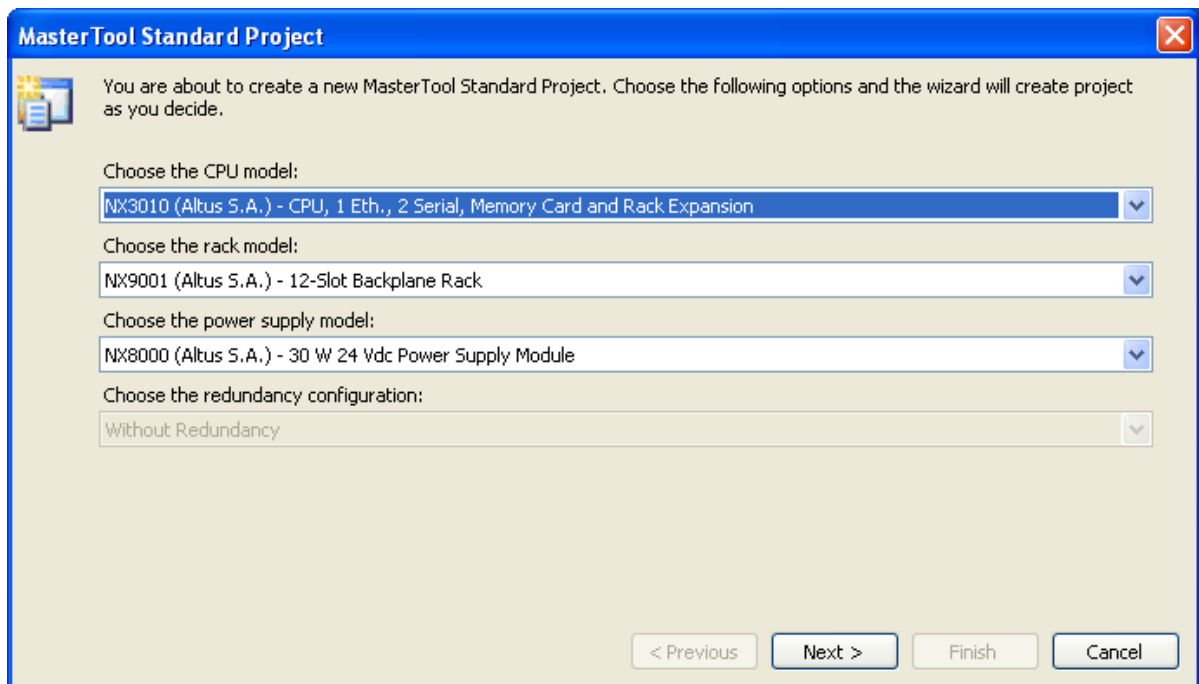


Figure 9-2. Hardware modules selection

PROFIBUS Network Configuration

To insert PROFIBUS DP Master NX5001, you should select the group *Fieldbus Interfaces*. Drag NX5001 to the desired position on Nexto bus.

ATTENTION:

It is important that the module PROFIBUS DP Master NX5001 be positioned after CPU.

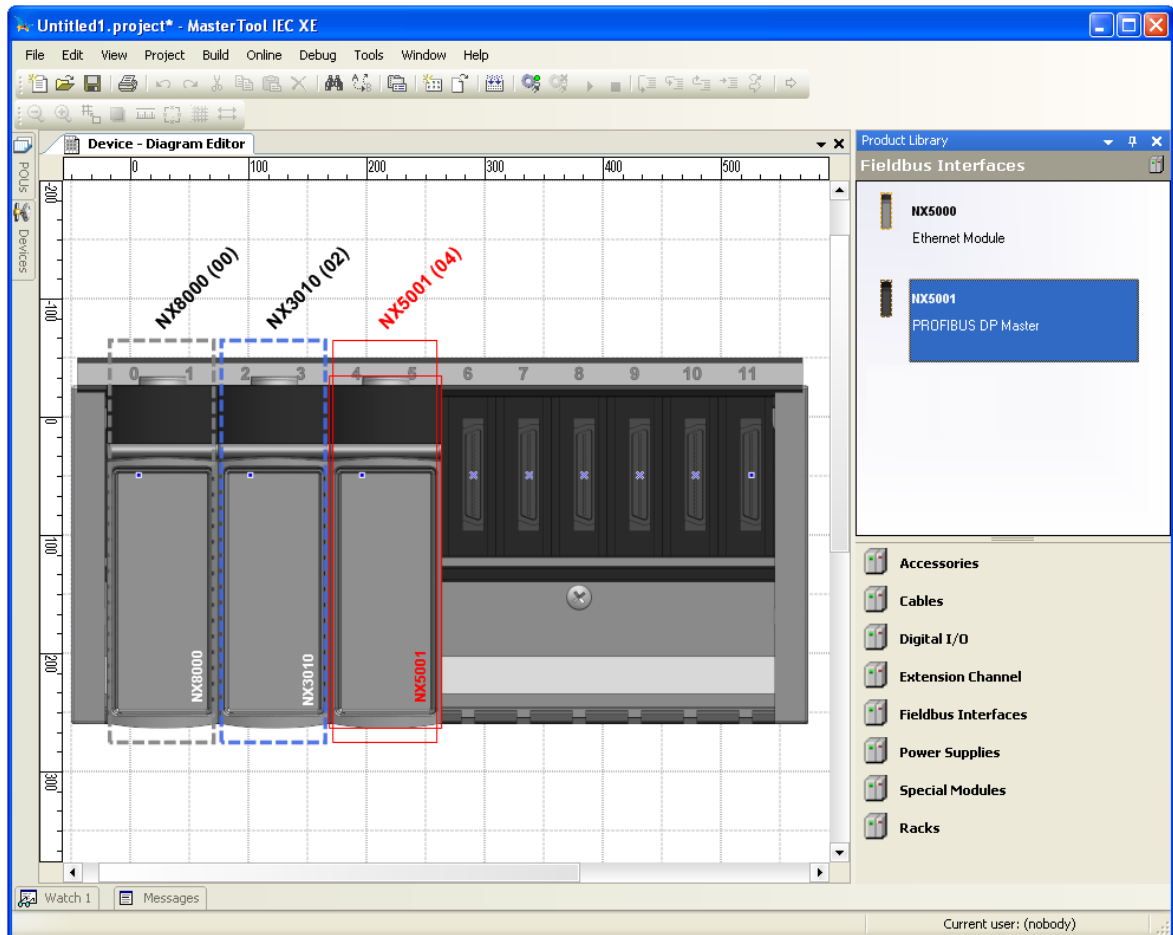


Figure 9-3. Selection of PROFIBUS DP Master NX5001

To add slaves to the PROFIBUS network, it's necessary to right-click on NX5001 and select the option *Add Device...*

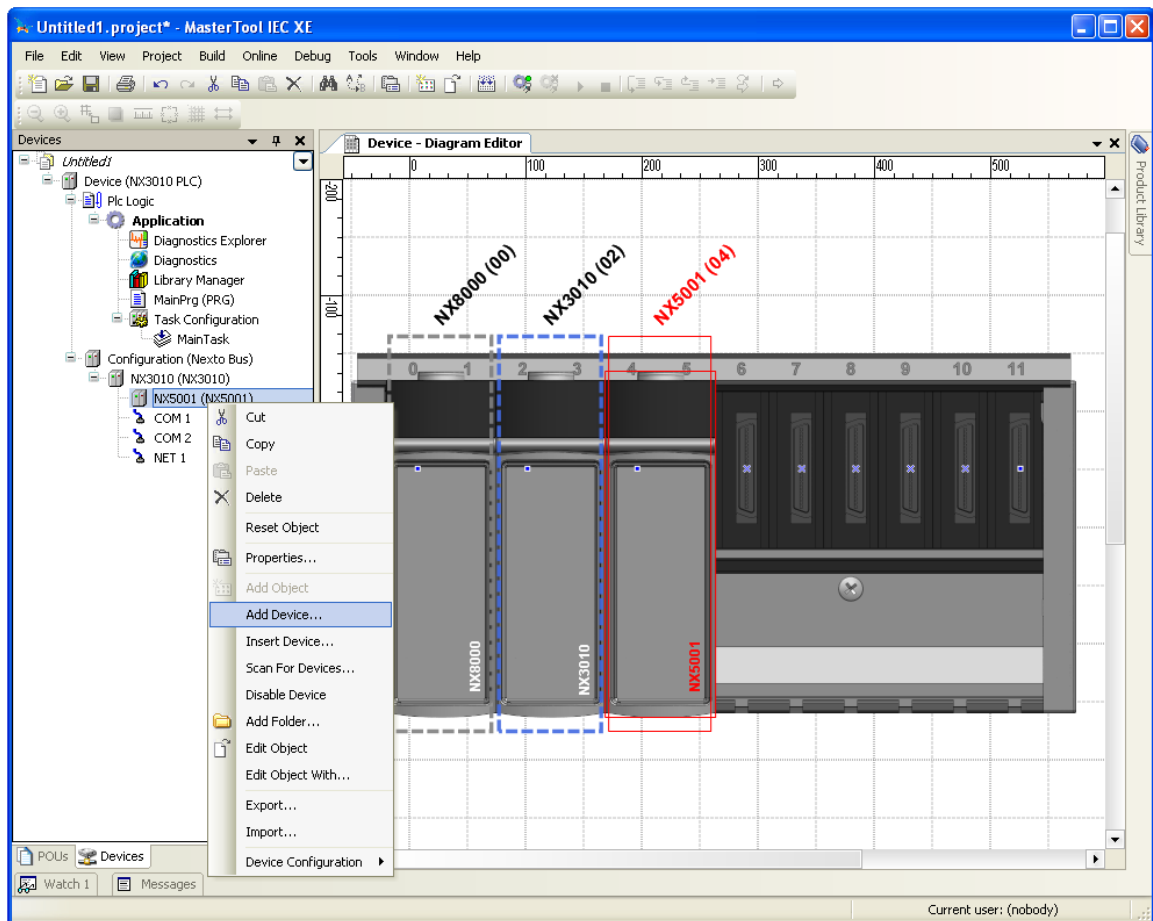


Figure 9-4. Adding PROFIBUS Slave Devices

Slaves displayed at Figure 9-5 are present in the MasterTool IEC XE programmer so it is not necessary to install their GSD files.

To assemble the network, select the PO5063 PROFIBUS head.

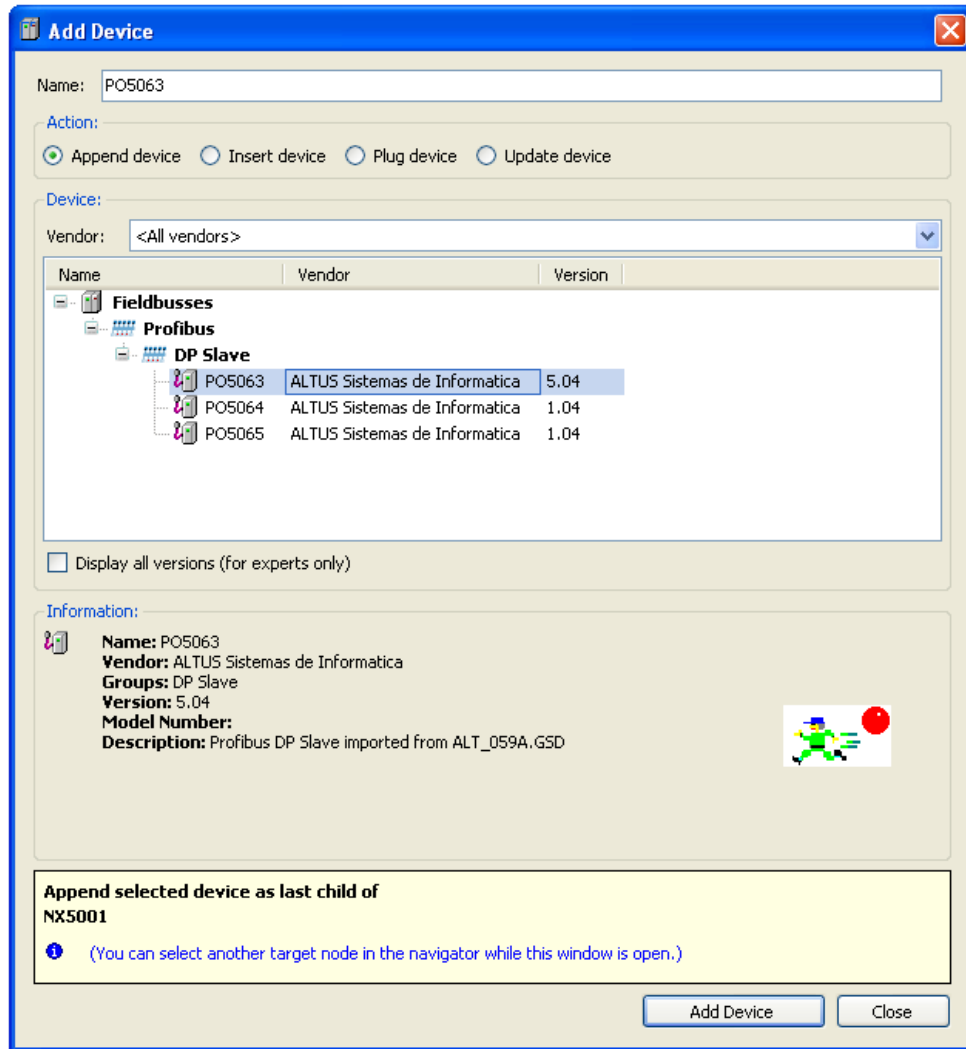


Figure 9-5. Selection of PO5063PROFIBUS head

PO5063 was included in the project, appearing just below NX5001 on the *Devices Tree*.

To add modules that will be in this network node, you have to click right PO5063. Selecting the option *Add Device*, a window will open with the available modules for this slave device.

For this example, four modules were added:

- PO1000 16DI 24 Vdc Opto Coupled
- PO2022 16DO No Dry Contact Relay
- PO1212 8AI Universal Isolated
- PO2132 4AO Universal Isolated

As can be seen in Figure 9-6, the *Device Tree* now has a NX5001 master, followed by the PO5063 slave and four I/O modules.

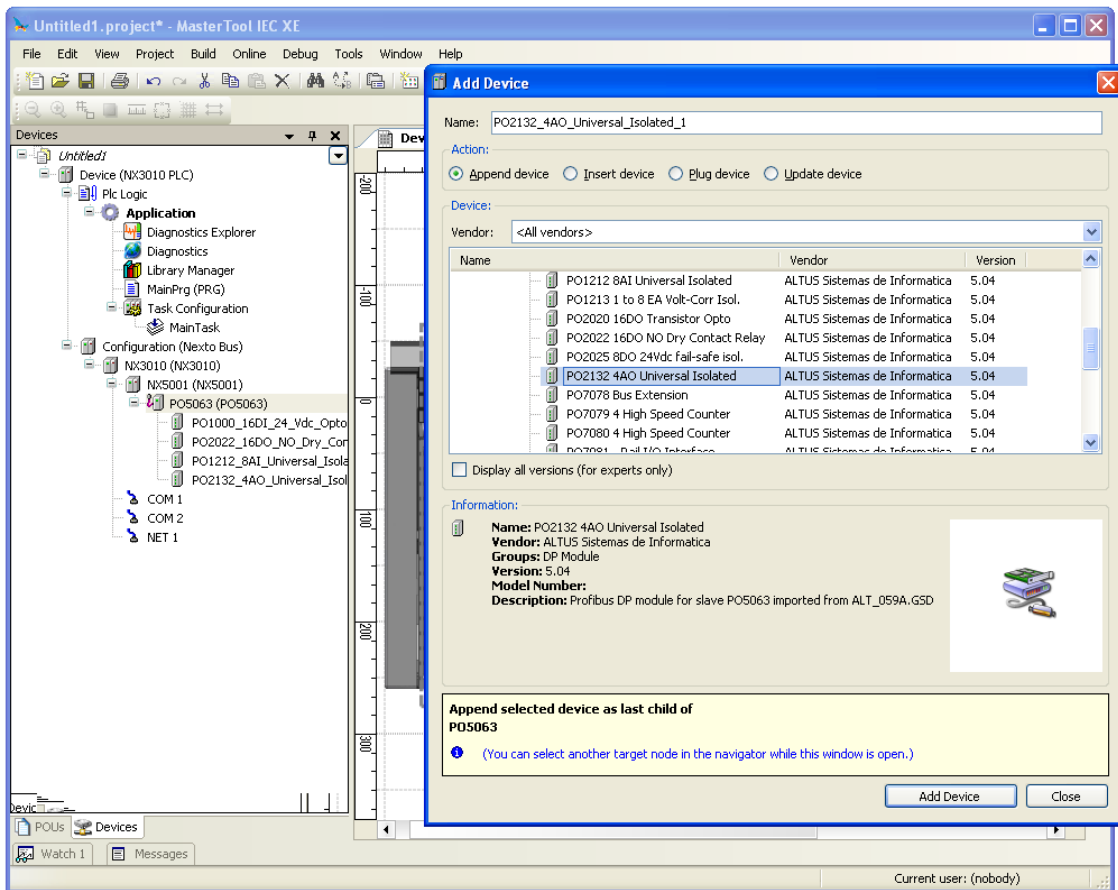


Figure 9-6. Adding Modules to PROFIBUS Slave

To add the next PROFIBUS slave, the inclusion procedure should be repeated, but selecting PO5064 instead.

Parameterization of the PROFIBUS Network

Master Parameters

PROFIBUS bus parameters can be edited by clicking on Master PROFIBUS DP NX5001 and selecting tab *DP-Parameters*.

Figure 9-7 shows standard screen displayed by MasterTool IEC XE.

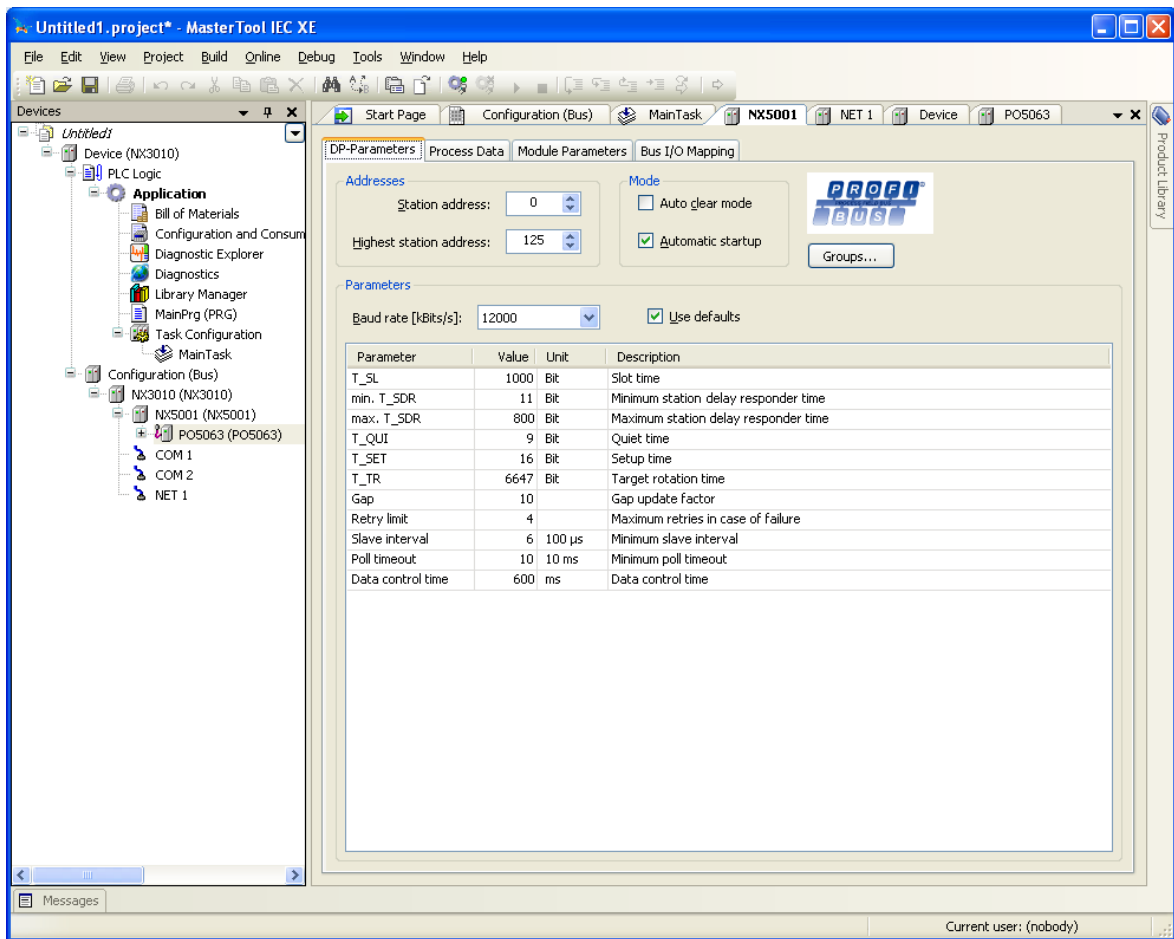


Figure 9-7. Parameterization of PROFIBUS Bus

Whenever the option *Use defaults* is marked, it is possible to edit only the following parameters:

- Station address
- Auto clear mode
- Automatic startup
- Highest station address
- Baud rate

ATTENTION:

Parameters *Auto clear mode* and *Automatic startup* are not supported by the Master PROFIBUS DP NX5001 in this product review.

Other parameters are changed automatically through alteration of *Baud rate*. In case it's necessary to change them, the option *Use defaults* must be unmarked.

Details of bus and PROFIBUS DP Master NX5001 parameters

The table below contains relevant information about parameters within tab *DP-Parameters* of PROFIBUS DP Master NX5001 of MasterTool IEC XE programmer.

Parameters	Description	Default	Possibilities	Note/unit
Station address	Master address on PROFIBUS network.	0	0 to 125	
Highest station address	Larger device address on PROFIBUS network.	125	0 to 125	
Auto Clear mode	This parameter is not supported in this product review.	disabled	<ul style="list-style-type: none"> • enabled • disabled 	
Automatic startup	This parameter is not supported in this product review.	enabled	<ul style="list-style-type: none"> • enabled • disabled 	
Baud rate [kbits/s]	Communication rate	12000	9.6 to 12000	List of valid values is on Table 9-3. Supported Baud rates.
T_SL	Time that master will wait for an answer. If the time slot has passed and the answer has not been received, the request will be resent until to the repetition limit is reached. (Slot time).	As per selected baud rate	37 to 16383	Bit
min. T_SDR	Time that the slave must wait before answer a request (Min. station delay responder).	As per selected baud rate	1 to 65535	Bit
max. TSDR	Time that master must wait between have sent a request and send a new one (Max. station delay responder).	As per selected baud rate	1 to 65535	Bit
T_QUIT	Number of <i>bit time</i> the master wait in each transmission, before start sending data (Quiet Time).	As per selected baud rate	0 to 127	Bit
T_SET	Setup time	As per selected baud rate	0 to 255	Bit
T_TR	Target rotation time	As per selected baud rate	1 to 16777215	Bit
Gap	Gap update factor	10	1 to 100	
Retry limit	Limit of retries in case of errors.	As per selected baud rate	1 to 15	
Slave interval	Minimum time between two accesses of one master to the same slave.	6	1 to 65535	x 100us
Poll timeout	Poll timeout is relevant only when there is a master of class 2 on the network, because it defines the maximum time of a communication between two masters.	10	0 to 65535	x 10ms
Data control time	Control time interval	As per selected transmission rate	1 to 65535	ms
Groups...	This parameter is not supported in this product review.			

Table 9-1. List of Parameters from PROFIBUS bus and from Master NX5001

Station Address

This parameter defines the Master PROFIBUS DP Master NX5001’s network address.

Highest Station Address (HAS)

This parameter defines the largest bus address up to which the master will look for the next active master to transfer bus right control.

ATTENTION:
This parameter must be set to at least the master’s address.

Auto Clear Mode

ATTENTION:
Parameter *Auto Clear mode* is not supported by PROFIBUS DP Master NX5001 in this product review.

Automatic Startup

ATTENTION:
Parameter *Automatic startup* is not supported by PROFIBUS DP Master NX5001 in this product review.

Baud Rate [kbits/s]

The following Baud rates are supported by the PROFIBUS DP Master NX5001:

Baud Rate (kbit/s)
9.6
19.2
93.75
187.5
500
1500
3000
6000
12000

Table 9-2. Supported Baud rates

T_SET (Setup Time)

Setup time is the minimum period (latency) between receiving a confirmation and sending a new request.

T_TR (Target Rotation Time)

This parameter is given in bit times and it is usually calculated by configuration tools. It's the time to pass the token across the network and returns to its initial master. When there are multiple masters, this includes the total time for each master to complete its I/O cycle, pass the token to the next master and to return to the initial master. Some factors directly influence TTR: baud rate, the amount of slaves with cyclic data exchange, the total amount of I/Os during data exchange and the amount of masters.

Gap (Gap Update Factor)

Indicates the number of token rotations between requests to a new master.

Data control time

This parameter defines the control time interval. After this time expires, the master (class 1) sends status reports automatically through the “Global Control” command.

Groups...

ATTENTION:
Parameter *Groups...* is not supported by PROFIBUS DP Master NX5001 in this product review.

The declaration of memory area allocated for PROFIBUS network diagnostics (details in Chapter 4) is in the tab *Module Parameters*.

MasterTool IEC XE programmer automatically fills this field automatically, but enables the user to edit it by double clicking over the corresponding *Value* column item.

Parameter	Meaning	Minimum	Default	Maximum
%Q Start Address of Module Diagnostics Area	Variable address %QB, whose value indicates the initial byte of the diagnostics area from the PROFIBUS DP Master NX5001.	0	Inserted by the MasterTool IEC XE programmer according to bus configuration.	The limit depends on the CPU model (see <i>Nexto Series CPU User Manual</i>)
%Q Start Address of Slaves Diagnostics Area	Variable address %QB, whose value indicates the initial byte of the diagnostics area from the PROFIBUS slaves.	0	Inserted by the MasterTool IEC XE programmer according to bus configuration.	The limit depends on the CPU model (see <i>Nexto Series CPU User Manual</i>)
Network Redundancy	TRUE: enables the PROFIBUS network redundancy.	FALSE	FALSE	TRUE
	FALSE: disables the PROFIBUS network redundancy.			
Failure mode	TRUE: enables the switchover in case of PROFIBUS module failure.	FALSE	TRUE	TRUE
	FALSE: disables the switchover in case of PROFIBUS module failure.			

Table 9-3. Details of Configuration of Diagnostic Parameter from Master NX5001

Notes:

Failure Mode: This parameter is valid when there is a half-cluster redundancy (for further information see the Nexto Series CPUs User Manual - MU214605).

Slaves Parameters

After a double click on the PO5063 within the *Device Tree* , the configuration and information tabs are available.

General information about the module, such as name, manufacturer, version and others, are in the *Information* tab.

Parameterization of PO5063 is edited in the parameters available in the main tab, *DP-Parameters*, as shown in the figure below.

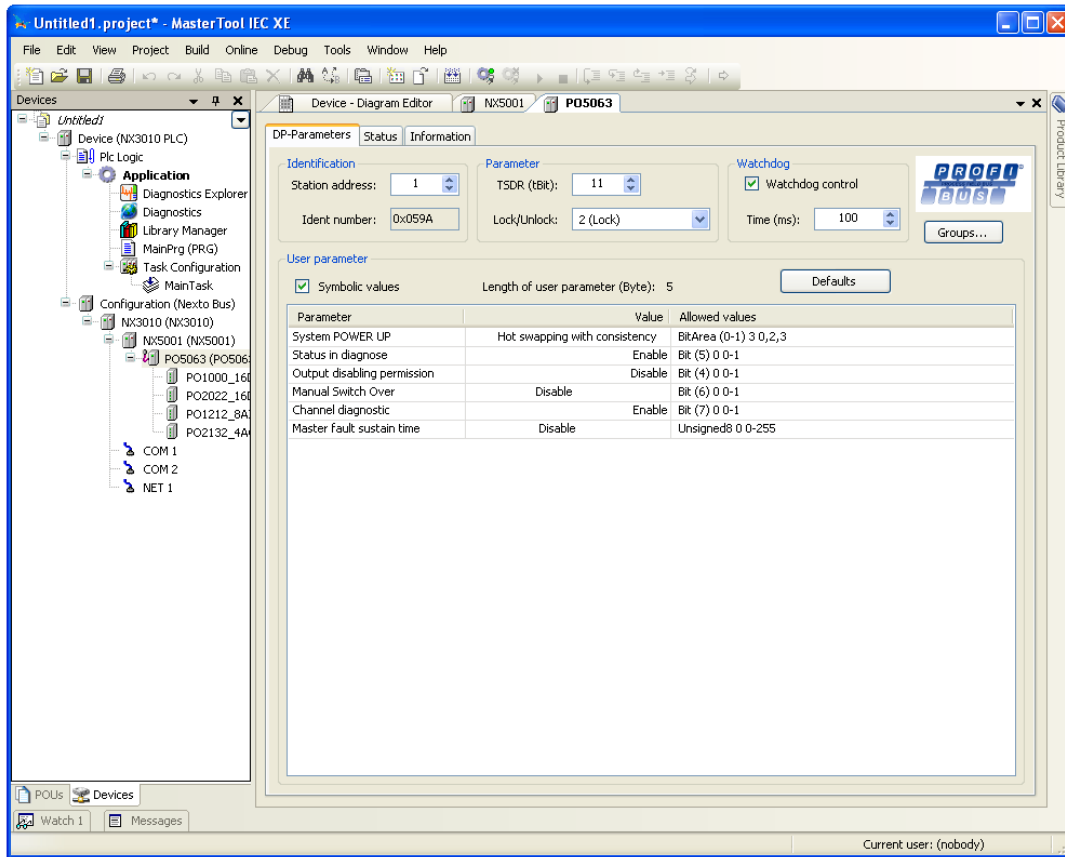


Figure 9-8. Parameterization of PROFIBUS Slave

Parameters	Description	Default	Possibilities	Note/ Unit
Station Address	Slave address on PROFIBUS network.	0	0 to 125	
Ident Number	Identifier of slave device (device number, as registered at PROFIBUS Committee).	As per GSD	It is not possible to edit this field	
T_SDR	Time after which a station can answer.	11	0 to 255	tBit
Lock/Unlock	Slave is blocked or released to other masters.	2	0 to 3	
Watchdog control	Checkbox that enables the watchdog	enabled	<ul style="list-style-type: none"> enabled disabled 	
Time (ms)	Define time base for Watchdog Control.	100	0 to 65535	ms
Symbolic values	If the symbolic names are specified for parameters on device description file (GS? file), this option can be activated to show symbolic values instead of real values on the column "Value", at the parameters table.	enabled	<ul style="list-style-type: none"> enabled disabled 	
Length of user parameters (Byte)	Total amount of configurable parameters by the user, defined in device description file.	As per GSD	It is not possible to edit this field	byte
Defaults	Clicking in this option restores the default parameter values.			
Groups...	This parameter is not supported in this product review.			

Table 9-4. List of Parameters from PROFIBUS Slave .

ATTENTION:
 Parameter *Groups...* is not supported by the Master PROFIBUS DP NX5001 in this product review.

Details about parameters of PROFIBUS PO5063 head can be found in its User Manual - MU209508.

Details about the other fields can be found on standard EN5017.

Finally, select the other slave, go onto its *DP-Parameters* tab (the same shown in Figure 9-8) and change its PROFIBUS network address (parameter *Station address*)

Module Parameters

I/O modules that are present in slave PO5063's bus need to be configured according to the usage specifications. For this, it is necessary to double click on the desired module in the *Device Tree*.

Go onto *DP-Parameters* tab to configure the I/O points.

As can be noted in the figure below, for the module PO2132, this tab is used to configure the type of analog signal of the four output channels. For the module PO1212, this tab should be used to configure the type of analog signal of the eight input channels.

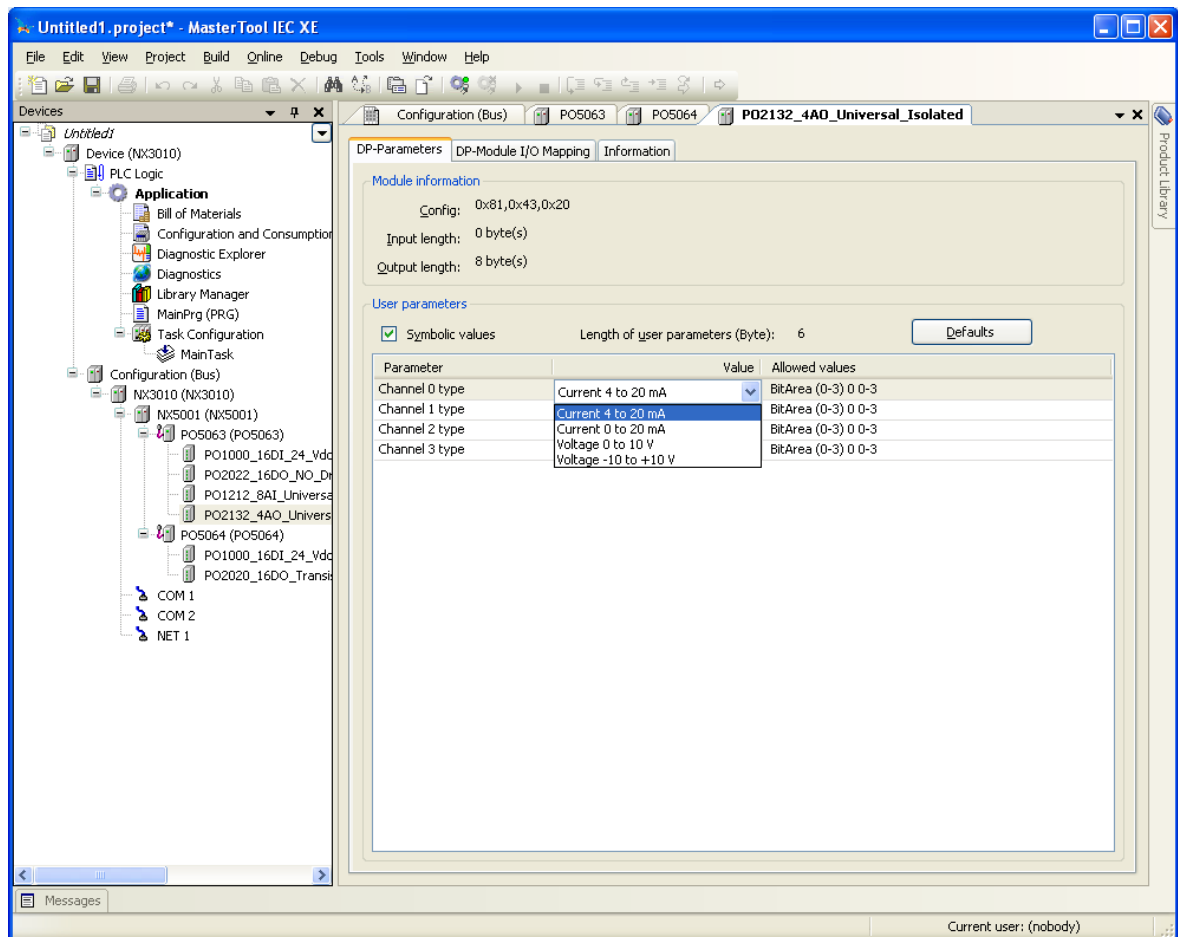


Figure 9-9. Configuration Tab for Module PO2132

Mapping

When adding master and slave devices to PROFIBUS in the *Device Tree* at MasterTool IEC XE programmer, memory areas and structures for data allocation regarding devices diagnostics and slave modules input and output points are defined.

The table below shows the relations allowed by MasterTool IEC XE, established between functionalities and variables.

Type of Association	Nexto CPU Variable Type
Digital Input Points	%IBX Variables
Digital Output Points	QBX Variables

Analogical Input Points	%IWX Variables
Analogical Output Points	%QWX Variables
Diagnostics	%QXX Variables

Table 9-5. Variables Allowed in PROFIBUS Relationships

I/O Modules Mapping

PROFIBUS relations can be checked and/or modified within the tab *DP-Module I/O Mapping*. For example, as can be seen in the figure below, for the module PO1000, input variables and IB4% IB5% were allocated for this module. That is, the value in each bit represents the status of each input point of PO1000: %IB4.0 represents input 0 and %IB5.7 represents the input 15.

For module PO2022, output variables %QB6 and %QB7 were allocated. Just as for the PO1000, each bit of these variables represents the state of an output point of PO2022. Each digital I/O point uses 1 bit, while one analog point uses 2 bytes, for instance: *Channel 0* of PO2132 was allocated at %QW10, thus using %QB10 and %QB11.

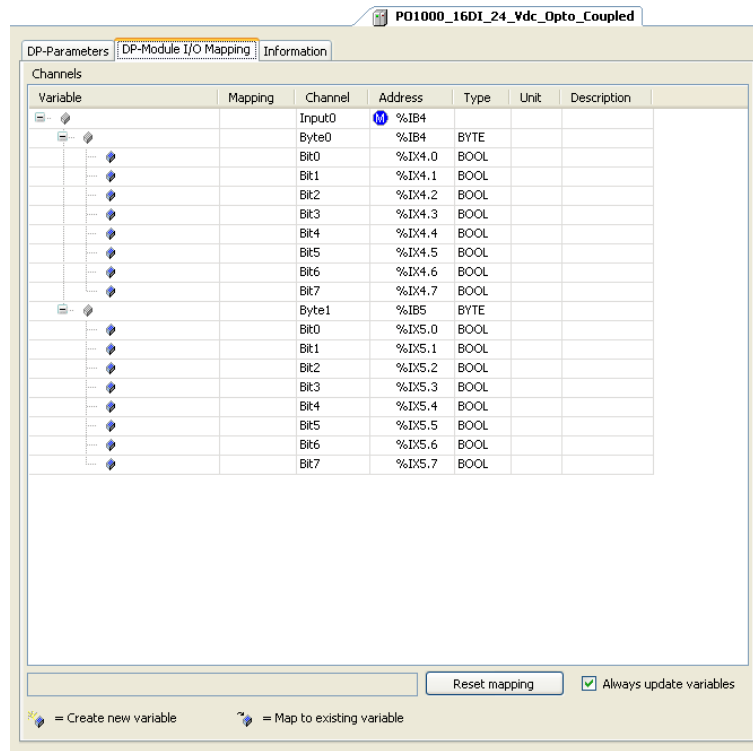


Figure 9-10. Tab for Configuration of Module PO1000 Mapping

ATTENTION:
 Select the option *Always update variables* at the right bottom to update the variables at each cycle.

Diagnostics Mapping

When adding a module to Nexto bus, MasterTool IEC XE programmer establishes statements for diagnostics that associates memory areas to the structures.

Regarding PROFIBUS network, as mentioned earlier in this chapter in Master Parameters, the initial memory offset area allocated for diagnostics is parameterized on the tab *Module Parameters*.

From this offset on, the MasterTool IEC XE programmer assembles the definition of associations on the declaration of global variables reserved for diagnostics. To examine them, double click the item *Diagnostics*, above the *Device Tree*.

User Commands Mapping

This mapping is done automatically by MasterTool IEC XE programmer when adding Master PROFIBUS DP NX5001 to the project.

Defined variables are in the tab *Nexto Bus I/O Mapping I/O Mapping*, as indicated in the figure below and it can be changed by the user, however this is not considered a good practice.

Details for the user commands can be found in the Chapter User Commands.

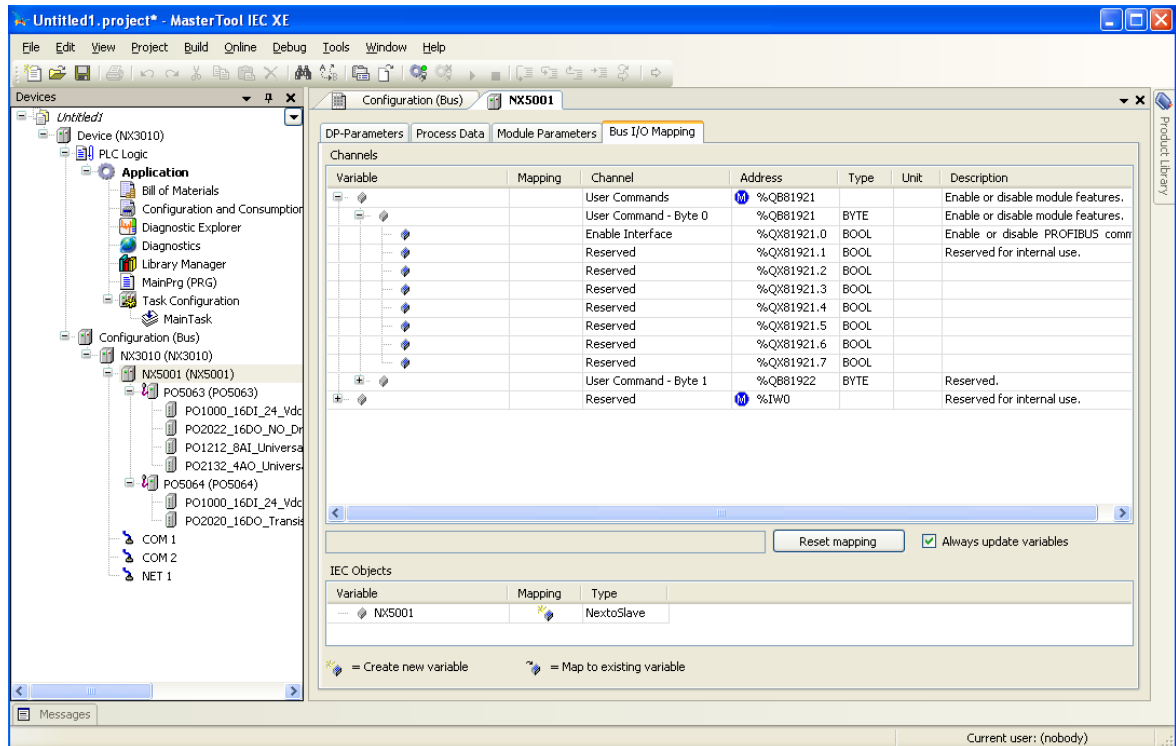


Figure 9-11. User Commands Mapping

Loading PROFIBUS Configuration

After finishing the configuration and parameterization process, it is necessary to send the project to CPU through the Ethernet channel, so it is necessary to change IP address on NET1 channel in the *Device Tree* to the desired address.

Next, it's necessary to select the IP of the CPU to which the application will be sent.

Access the *Device* option in the *Device Tree*, with a double click. In the *Communication Configuration* tab, select the *Gateway* and map the available devices in the network clicking on the *Scan Network* button.

In case there's no *Gateway*, or a new one is to be added, click on the *Add Gateway* button, configuring its IP in the open window.

Next select the CPU IP and click on the *Define Active Path* button, as shown on the figure below:

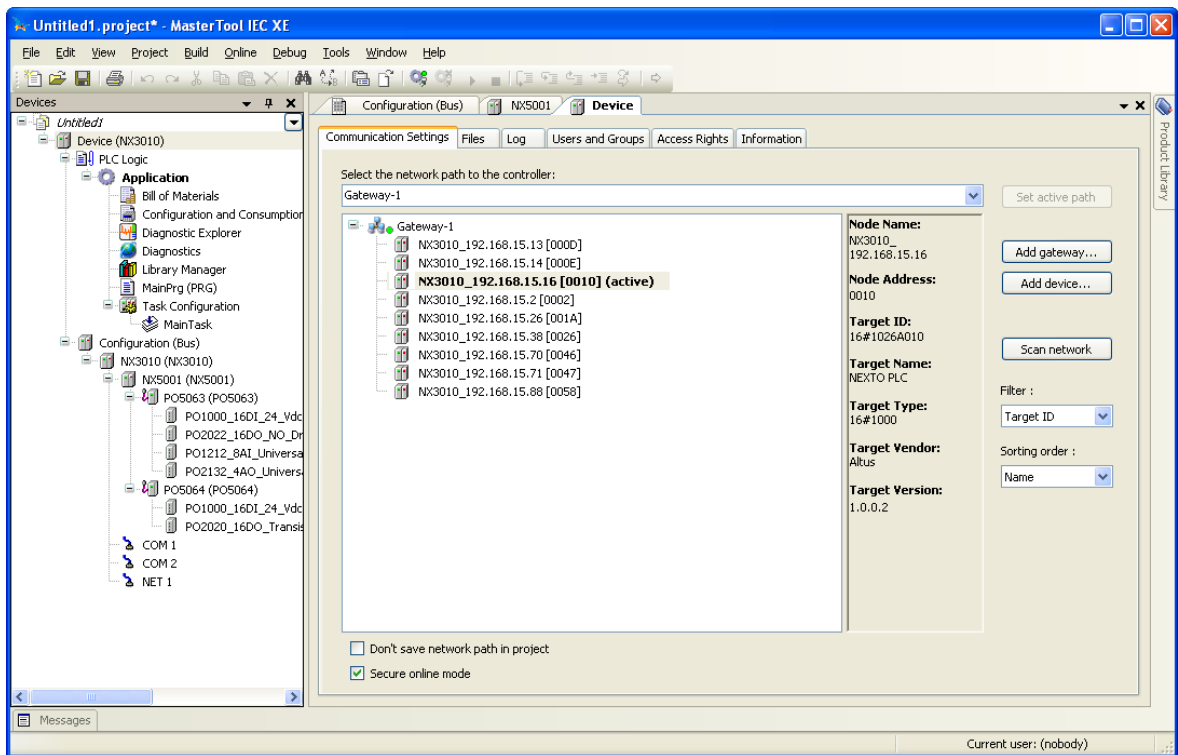


Figure 9-12. CPU IP Selection

In order to download the project onto the CPU, a *Login* command must be executed. Access the *Online* menu and select *Login*.

At the end of the download, the NX3010 CPU, through Nexto bus, sends the PROFIBUS network configuration to the PROFIBUS DP NX5001 Master, which configures the PROFIBUS bus and the PROFIBUS slaves.

Next, press F5 in your keyboard to set the application to execution mode.

10. Appendix B – GSD Installation

In case it is necessary to configure a PROFIBUS slave that is not installed in MasterTool IEC XE programmer, the following steps should be performed:

Select the *Tools* menu, then *Install Device...*

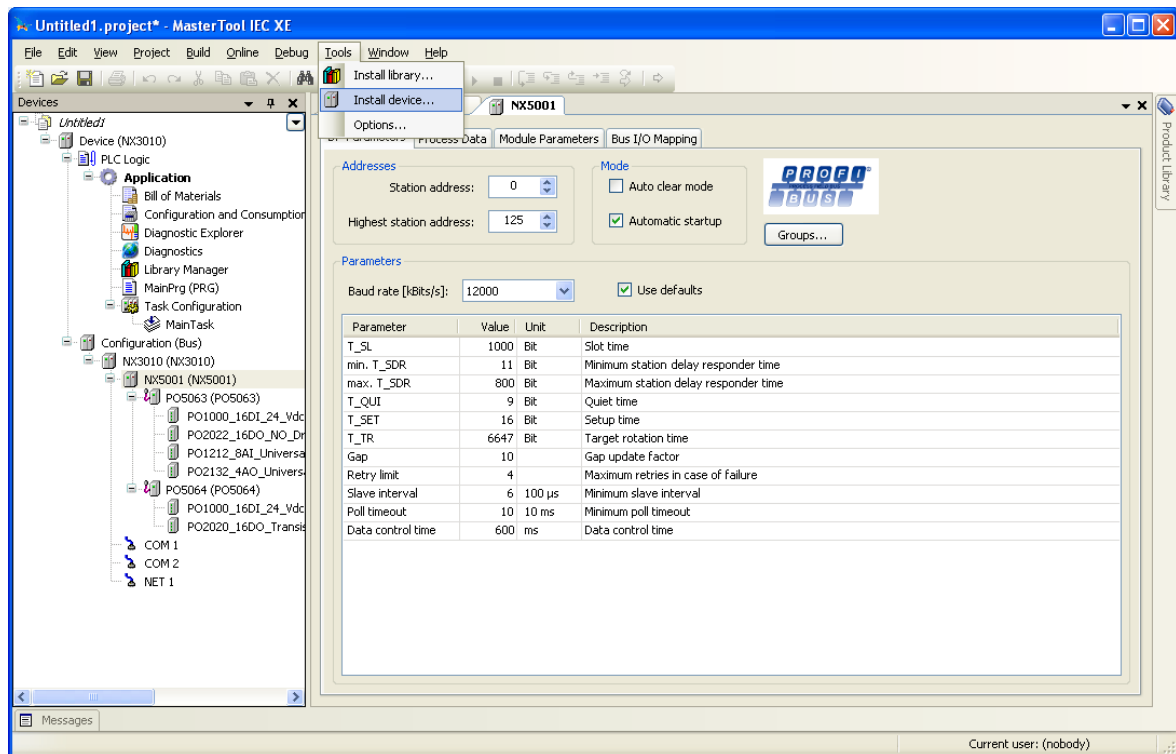


Figure 10-1. Access *Install device*

Locate the GSD file to be added. Remember to change the type of file to *PROFIBUS DP V5.0 Configuration Files(*gs?)*. Select the file and click in *Open*:

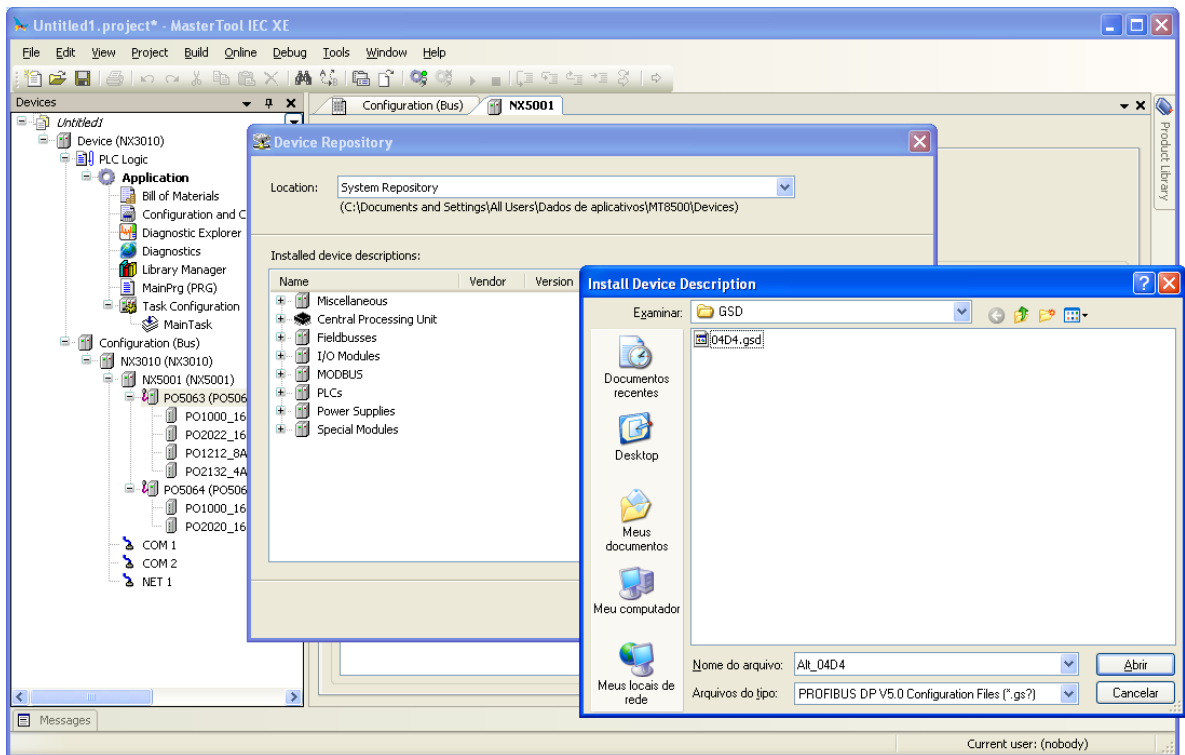


Figure 10-2. Installing Devices

Once added to the Device Repository, PROFIBUS DP100V slave can be added to the PROFIBUS DP Master NX5001:

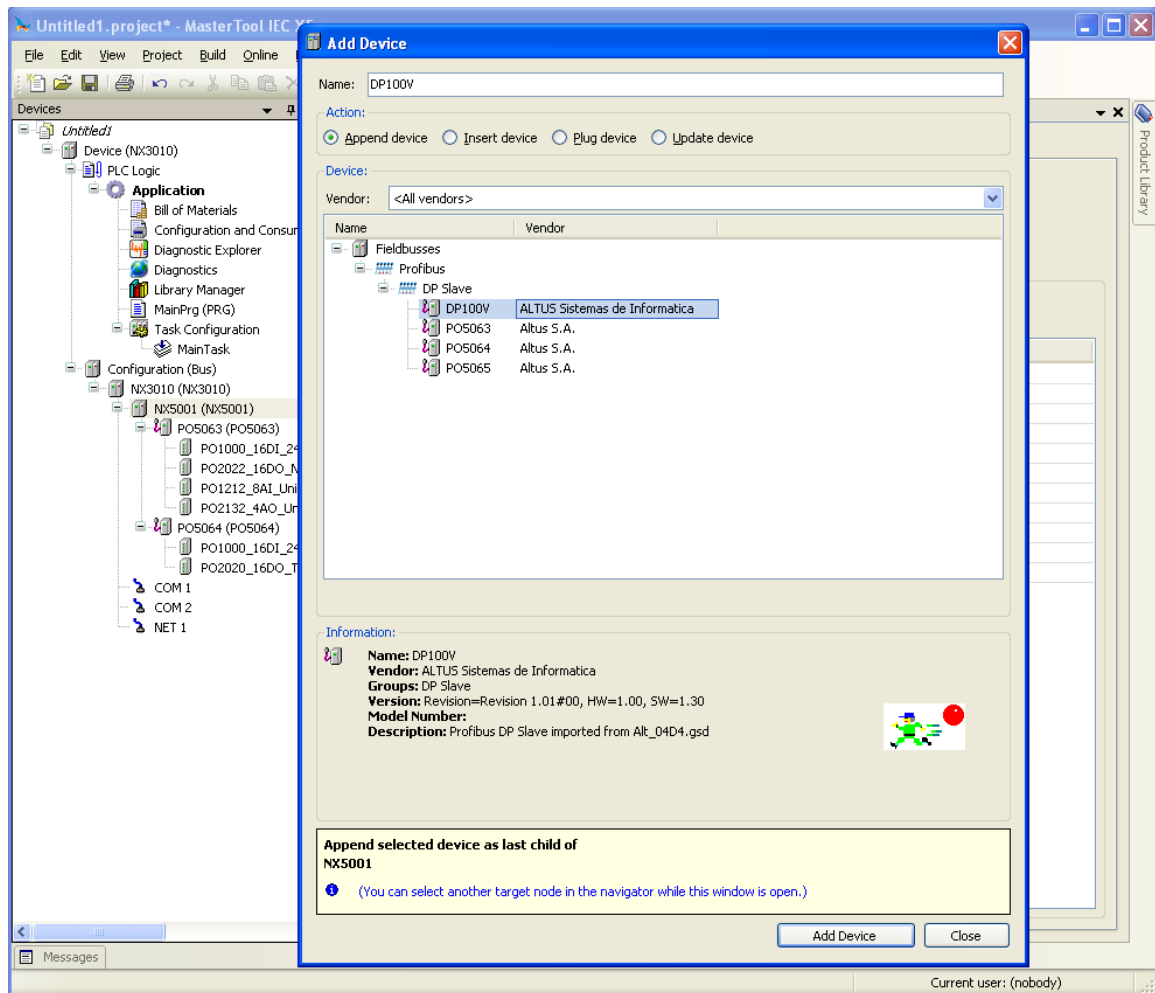


Figure 10-3. Adding new PROFIBUS slave to NX5001

Now you just have to send the new configuration to NX5001, as indicated in Loading PROFIBUS Configuration.

11. Glossary

Autoclear	In PROFIBUS networks, it's the parameter that, when activated, changes the State of the master to Clear when an error occurs on the network.
Bus	Set of electrical signals that are part of a logic group with the function of transferring data and control between different elements of a subsystem.
Remote bus	Set of interconnected I/O modules to a head of network field.
Bit	Basic information unit, it may be at 1 or 0 logic level.
Byte	Information unit composed by eight bits.
Field network head	Slave module of a field network. Is responsible for the exchange of data between your modules and a master of the field network.
Field network cable	Cabo que conecta os nós de uma rede de campo, como a interface de rede de campo e a cabeça de rede de campo.
Serial channel	Interface for an equipment that transfers data in serial mode.
Watchdog	Electronic circuit that checks the equipment operation integrity.
Cluster	Group formed by the controllers (half-clusters) PLCA and PLCB.
Programmable Controller	Also know as PLC. Equipment controlling a system under the command of an application program. It is composed of a CPU, a power supply and I/O modules.
PLC	See Programmable Controller.
Redundant PLC	Group formed by a cluster (PLCA and PLCB), PX2612 control panel and remote I/O systems.
Stand-by PLC	Half-cluster (PLCA or PLCB) who is momentarily in a stand-by state.
PLCA	Designation of one of the two controllers that form a redundant PLC. The other is called PLCB.
PLCB	Designation of one of the two controllers that form a redundant PLC. The other is called PLCA.
Default	Preset value for a variable, used in case there is no definition.
Diagnosis	Procedure used to detect and isolate faults. It is also the set of data used for this determination, which serves for the analysis and remediation.
Dword	Double Word.
EN50170	In PROFIBUS networks, is the standard that defines the field network.
Address of head of field network	Is the address of a node on the network, set at the base of the field network head module.
I/O	See input/output.
Input/output	Also called I/O. I/O devices on a system. In the case of PLCs typically correspond to modules digital or analogue output or input monitoring or driving the controlled device.
ER	Acronym used to indicate error in LEDs.
Slave	Equipment connected to a communications network that transmits data only if it is requested by other equipment called master.
Frame	A unit of information transmitted on the network.
Freeze	In PROFIBUS networks, is the State of the network when the data entries are frozen.
Gateway	Equipment for connecting two communication networks with different protocols.
Half-cluster	Alternative name for each of the two controllers (PLCA and PLCB) that form a cluster.
Hardware	Physical equipment used in data processing which normally run programs (software).
HSA	Acronym for Highest Station Address.
IEC 61131	Generic standard for operation and use of PLCs. Former IEC1131.
Interface	Adapts electric and/or logically the transfer of signals between two devices.
Field Network Interface	Field networks master module located in local bus and intended to make communication with field network heads.
LED	Acronym for Light Emitting Diode. Is a type of semiconductor diode that emits light when stimulated by electricity. Used as an indicator light.
Menu	Set of options available and displayed by a program in the video and that can be selected by the user to activate or to perform a particular task.
Master	Equipment connected to a communications network where originate command requests to other network equipment.
Active PROFIBUS Master	The master NX5001 in Active mode establishes communication with the remote (slave) PROFIBUS.
Passive PROFIBUS Master	Passive mode serves to test the circuits of transmission and reception PROFIBUS and physical medium to prevent the occurrence of a hidden flaw. The master NX5001 in passive mode performs only the master fault monitoring NX5001 active.
Module (hardware)	Basic element of a system with very specific functionality. It's normally connected to the system by connectors and may be easily replaced.
Node	Any station of a network with communication skills using an established protocol.
NX5001	Refers to the PROFIBUS DP master module NX5001.

Octet	Set of eight bits numbered from 0 to 7.
PROFIBUS DP	Means PROFIBUS Protocol (Decentralized Periphery).
Application program	Is the program loaded into a PLC, which determines the operation of a machine or process.
Project	PLC project as a whole, formed by the project archive (source code) and by the project application (executable code).
Protocol	Procedural rules and conventional formats which, upon control signals, allow the establishment of a data transmission and error recovery between equipment.
Communication network	Set of equipment (nodes) interconnected by communication channels.
Master-slave communication network	Communication network where information transfers are initiated only from a single node (master of network) connected to the data bus. The other network nodes (slave) only respond when requested.
Multimaster communication network	Communication network where information transfers are initiated by any node connected to the data bus.
Master redundancy (referring to PROFIBUS Master)	System used in PLC redundant, where two masters NX5001 are used in the same network. A master on the PLCA and the other on the PLCB. A NX5001 will act as Active Master and the other as Passive Master liability (see Passive PROFIBUS Master and Active PROFIBUS Master).
Network redundancy (referring to PROFIBUS network)	Each PROFIBUS slave device has two network connections, forming a double network, connected to two NX5001 modules.
Software	Computer programs, procedures and rules related to the operation of a data processing system.
Bus termination	Component that should be connected in the last module of a bus.
Timeout	Maximum preset time to a communication to take place. When exceeded, then retry procedures are started or diagnostics are activated.
Token	Is a tag that indicates who is the master of the bus at the time.
Hot swap	Procedure of replacement of modules in a system without the need of turning off. Normally used in trading of I/O modules.
CPU	Central Processing Unit. It controls the data flow, interprets and executes the program instructions as well as monitors the system devices.
Varistor	Voltage surge protection device
WD	Acronym for watchdog. See watchdog circuit.
Word	Information unit composed by 16 bits.