



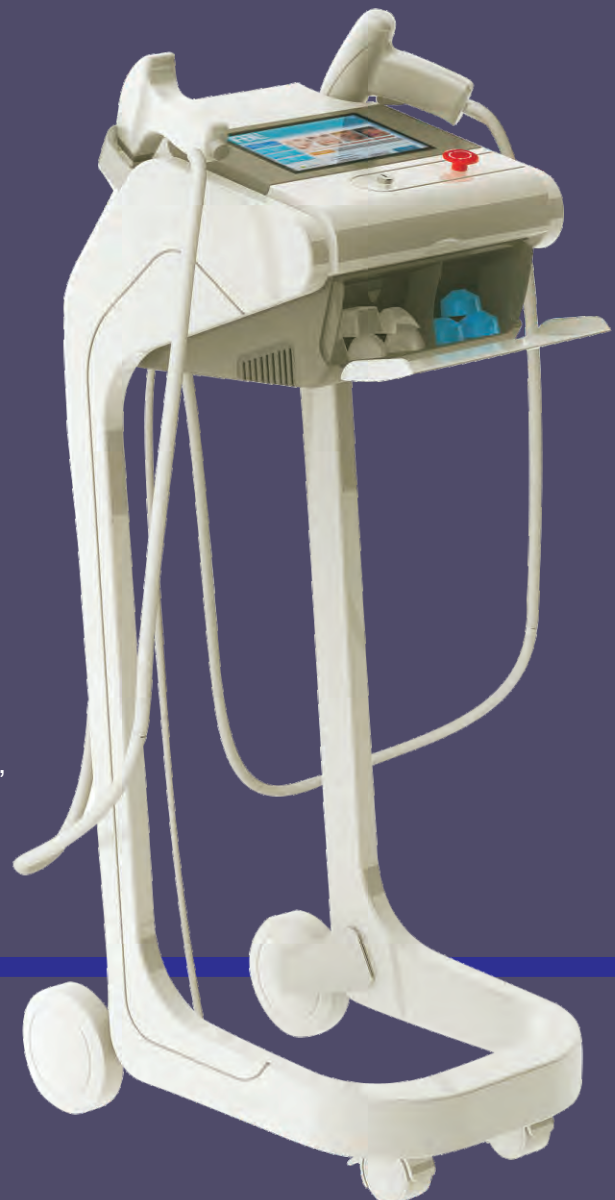
Dual Fractional Cooling RF Machine -----MNF300 Operate Manual



Forever Beauty Laser Co.,Ltd



Dual Fractional Cooling RF Machine **-----MNF300 Operate Manual**



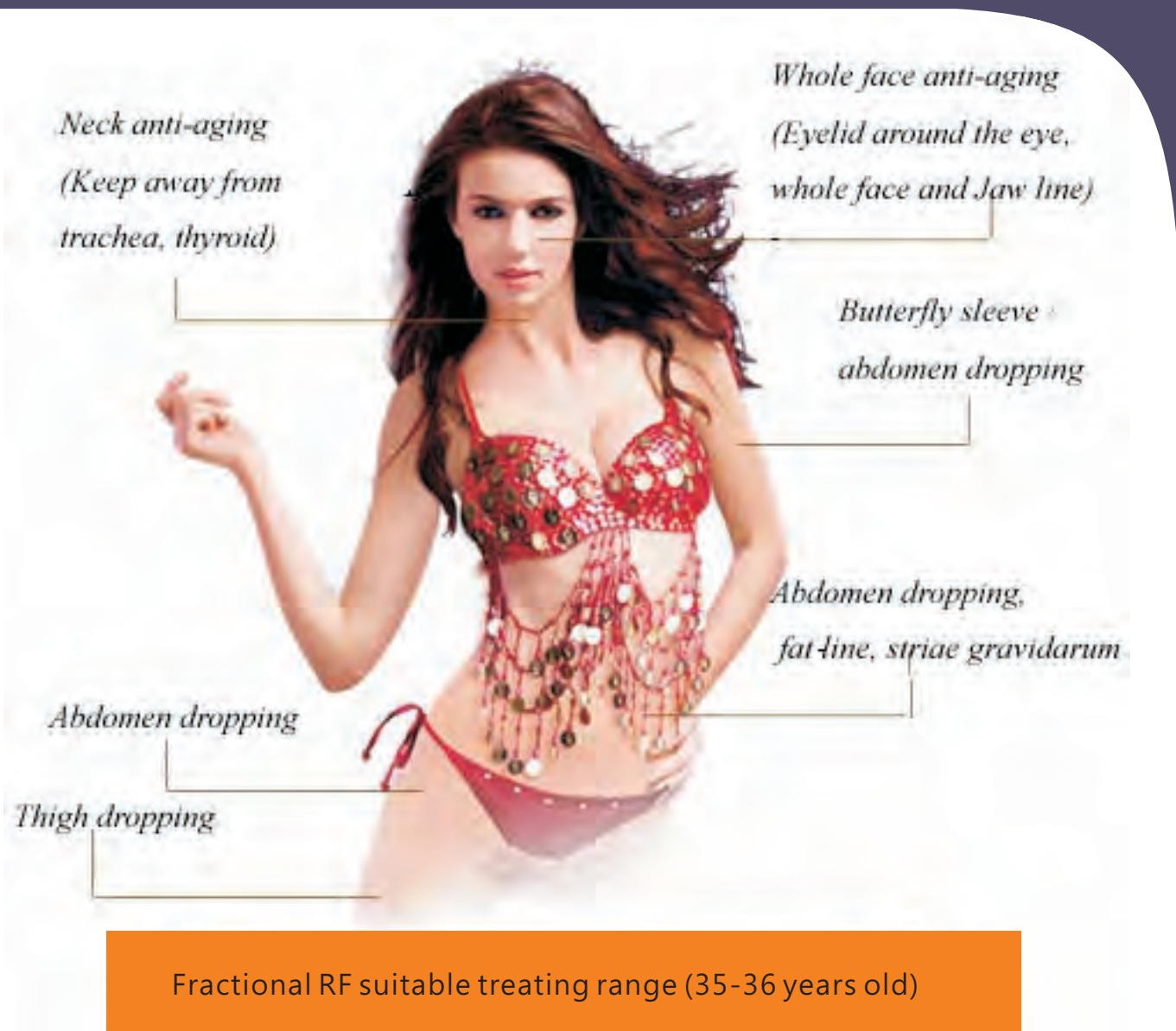
Contact us:
Manufacture: Forever Beauty Laser Co.,Ltd
Website: www.foreverbeautylaser.com
Address: Wa Yao Tou Dong Jie , Dou Da Lu Xi Ce ,
Dou Dian Zhen , Fangshan District ,
Beijing City, China .
Phone: 0086-10-80303402;
Fax: 0086-10-80303402
Email: fblaser@foreverbeautylaser.com



1. Brief Introduction of Fractional RF

Fractional RF beauty equipment has adopted advanced fractional Radio Frequency technology, creating a new fashion in beauty industry. Using the unique innovative intelligent smart skin platform and lattice probe, the fraction RF will generate proper proportion of thermal effects, to heat deep skin extensively, promote collagen contraction, tighten skin, and reduce cellulite. Individualized treatment programs can be set as per customer's different demands, such as skin texture and gloss improvement, deep pigment removal and skin lesions treatment. RF treatment is non-surgical, no chemical deep penetration, which can whiten and tighten skin more comfortably.

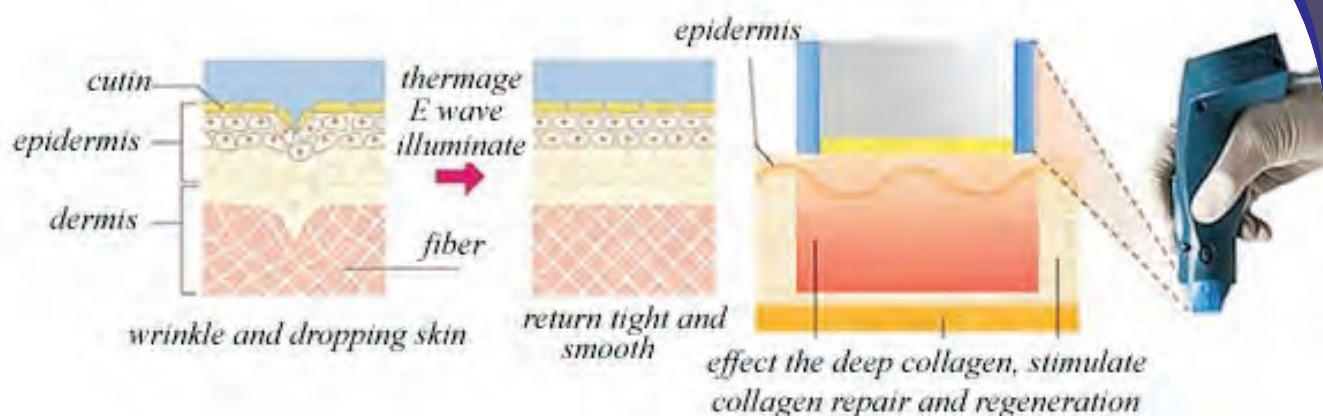
Fractional RF is mainly used to treat sagging and loose skin, severe wrinkles, rough and aging skin, large pores, pigmentation precipitation, acne, acne scars etc. It can effectively improve eye area, face, neck and reshape the face.



2. Working Theory:

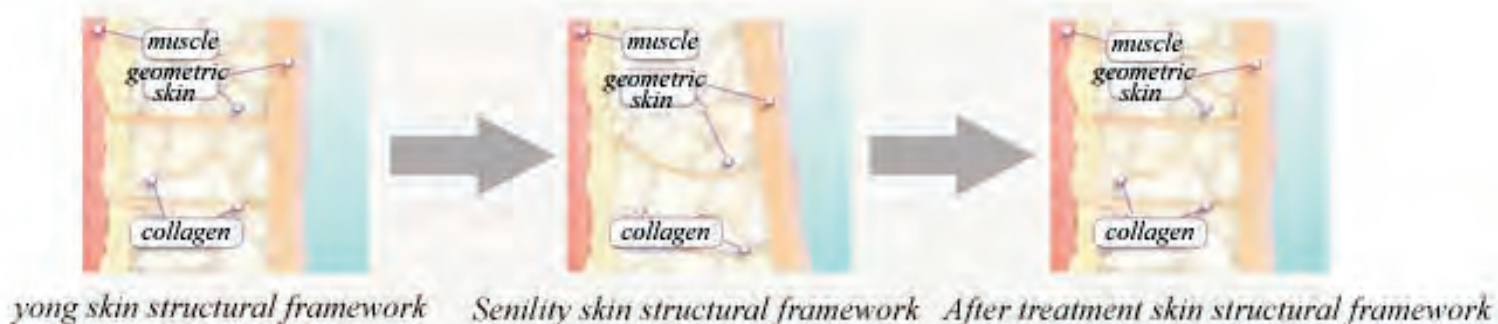
2.1 RF wrinkle removal principle

Permeated by RF, the subcutaneous tissue will be heated up by its natural resistance movement and then collagen become contracted immediately and the dermis are stimulated to generate more new collagen for replacement. The continuous new collagen will make the dermis thicker and denser so as to remove wrinkle, lessen scars, whiten and tighten skin, and restore skin elasticity.



2.2 RF skin reconstruction principle

Within 1 second, RF can change electrical polarity for million times in electrical field of the treated biological tissues. The electrified particles in tissue will go Brownian motion at the same frequency to form columnar heat, to destroy collagen hydrogen bonding structure and change the triple helical structure of collagen molecule, resulting in collagen immediate contraction and instant appearance of skin tightening effect. The circulation of mild and moderate thermal damage in dermal tissue is similar to wound healing undergoing three stages (inflammatory phase, proliferation phase and remodeling phase), so as to rejuvenate the skin, eliminate medium and severe wrinkle with lasting effect.

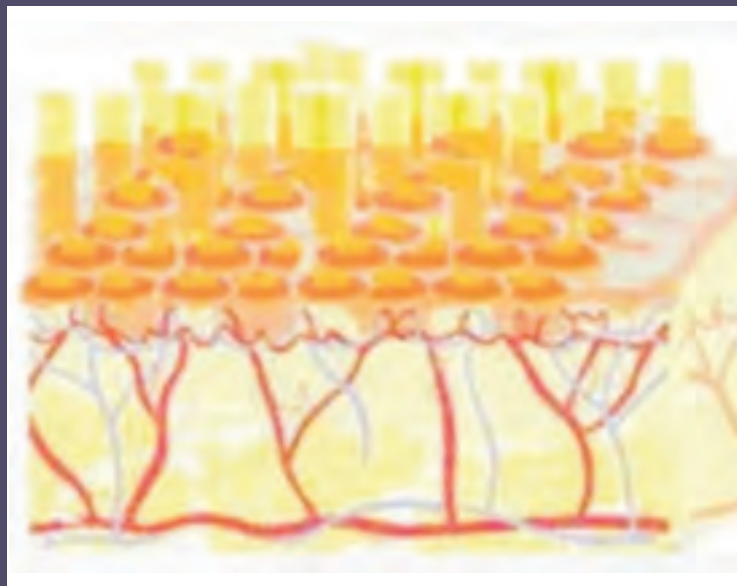


2.3 Fractional photothermal principle

On RF probe, heat is transferred by lattice cluster to the deep subcutaneous, forming a lattice collagen adhesion. Then the tightening skins are firmly repositioned to achieve better face lift. The key point of Lattice heating is having solved the problem of overheat on the skin (If the heat is out of skin's withstanding, Thermal Cap phenomenon will occur). Lattice heating makes deep collagen cells to release heat effectively and sufficiently and stimulates the collagen regeneration and adhesion to surrounding collagen, so as to form a solid support frame. Only RF lattice heating ensures the energy can fully come into effect in the dermis fiber layer and truly reach thermal effect.



Fractional RF system is an ideal skin rejuvenation technology through applying precise control of RF energy's permeating into a certain depth of dermis. The unique mesh segmented radio frequency technology makes the energy transferred to dermis in reticulation.



Through mesh segmented RF technology, energy can evenly reach skin surface to avoid partial burns by uneven energy. This unique technology ensures care of every inch of the treated skin, to fully stimulate the regeneration of collagen, firm subcutaneous tissue and shape prominent contours.

3. Effect of Fractional RF



3.1 Remove Wrinkle and rejuvenate skin

Fractional RF can increase regenerative capacity of the skin, with the up going temperature in tissue, blood flow increased, body immune system enhanced, then the blood circulation and body metabolism will be well strengthened. By using safe frequency together with massage around facial muscles, the collagen in dermis will be activated to soothe facial stiffness and increase blood flow, finally improving skin. Because of the deep heating in competent cells, during discharge of body heat softening the intervals, massage cream will be surprisingly well absorbed.



3.2 Remove Freckles and Whiten Skin

Fractional RF can normalize Hormone secretion; provide oxygen to help excrete the waste, therefore it can activate cells, prevent melanin secretion and decompose melanin.

3.3 Lessen Acne and Acne Scars

The bio-heat rise will bring antisepsis, normalize sebaceous glands, regulate sebum secretion, and promote the regeneration capability. The natural falling of stratum corneum will lessen the acne and acne scar.



3.4 Restore Skin Elasticity

Fractional RF can promote blood circulation and lymphatic circulation, with the deep thermal effect to soothe stiff muscle and decompose fat and excrete fat, the cells will be activated and refreshed, then the skin restores its elasticity.

3.5 Improve Skin Texture

For the oily skin with large pores and thick corneum, Fractional RF can get rid of excessive and thick comeu, clean pores, decompose grease, astringe and tighten pores, make the skin clear clean, smooth and refreshing.



3.6 Solve Eye Problem

Fractional RF can eliminate eye dark circles, eye pouch, crows-feet and relieve edema.



3.7 Improve the Body Mechanism

Fractional RF can eliminate edema and dropsy, improve vascular and lymphatic circulation

4. Feature of Fractional RF

4.1 No consumables

This machine has 3 Lattice treatment tip and 3 fractional rf tip. Both adopted the AMFR technology, Which can be used 2 years at least.

4.2 Precise positioning, balanced and comprehensive treatment

With the lattice medicinal sticker, position emission precisely and balance wavelength energy (avoid omission and uneven energy etc.), the energy will activate every growth factor in the whole face as well as collagen, making the skin full of youthful vitality.

4.3 High-energy, high-frequency, collagen rebirth

A shock is up to 600 million times, and the effect of energy conduction by high-frequency high-energy is 7-8 times compared to other instruments. It can activate the collagen fiber, promote collagen rebirth and reconstruct the collagen frame to achieve deep skin tightening, pulling and anti-wrinkle.

4.4 Few times treatment, save time and effort at once

Through Fractional RF, just few time treatment can remove wrinkle, rejuvenate skin and reshape face. It needs no convalescence and total freedom after treatment, which is particularly suitable for busy people who have no time to do facial care. few treatment only, effect gets lasting, much better subsequently, and reaches the peak after 6 months.

4.5 The long-term firming effect up to 2 years or more .

Several times treatment, allowing deep skin collagen to sustainable grow more than one year (6 months is the growing peak time), triggers collagen's growth to a great extent and the effect is lasting up to 2 years or more.

5. Accessories of Fractional RF

MNF300 Equipped with 1 RF Handle, 1 Cryo cooling handle and 6 RF heads.



Fractional RF head 1

Size: 20*20mm

Pins: 36

Application: Whole body shaping ,body tightening, body lift, etc.

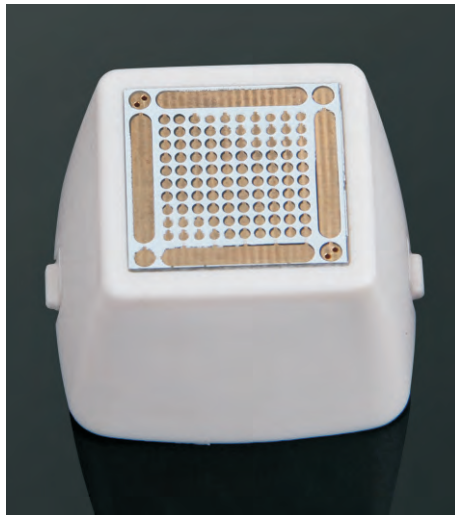


Fractional RF Head 2

Size: 20*20mm

Pins: 64

Application: Tightening after fat suction, arm/leg skin tightening, lift, etc.



Fractional RF Head 3

Size: 20*20mm

Pins: 100

Application: Stretch Mark Removal, pigmentation removal, skin tightening, etc



Lattice RF Head 4

Size: 19*20mm

Pins: 289

Application: Eliminating Double chin, Face shaping, Pores contraction, Skin whitening, Skin rejuvenation



Lattice RF Head 5

Diameter: Ø20mm

Pins: 188

Application: Wrinkle removal, Skin tightening and Face lift



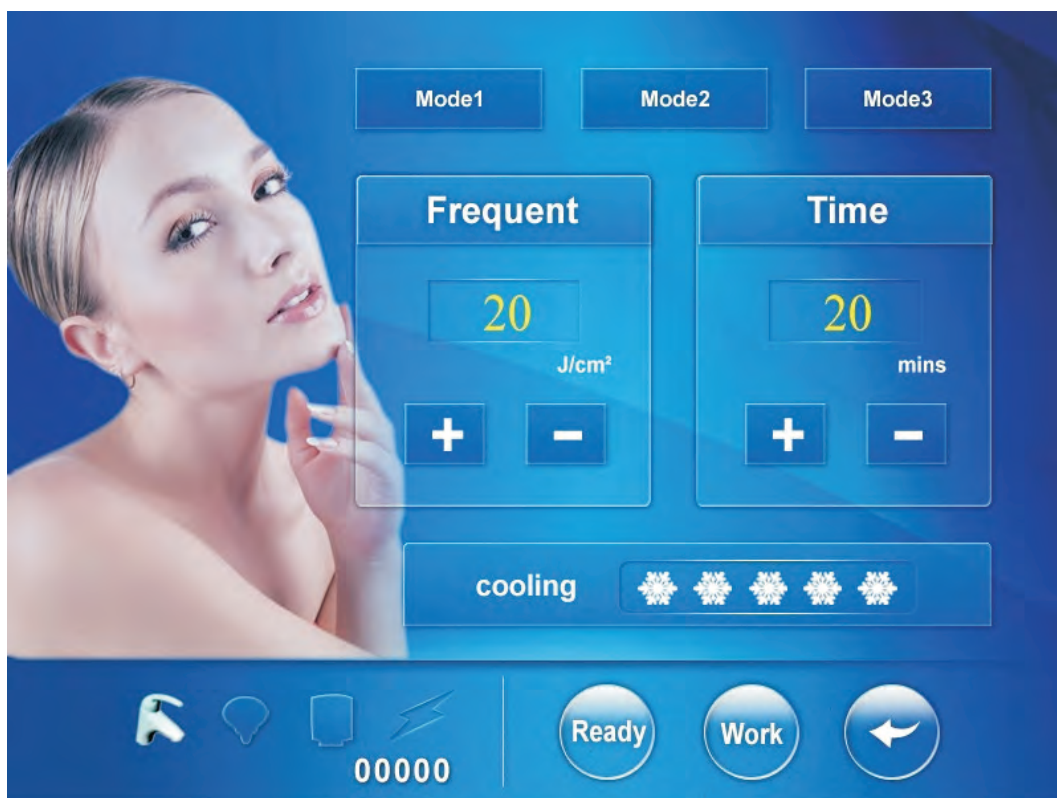
Lattice RF Head 6

Diameter: Ø8mm

Pins: 59

Application: Eye pouch removal, Crow's-feet removal, lower eyelid wrinkle removal





6. Instrument Operation Instruction

Please read the below content carefully before using the machine



General safety warning:

- ✦ Remove the wear of metal decoration
- ✦ Turn off the mobile phone or put it away from the treatment area.
- ✦ It's normal to feel a little hot during the treatment.
- ✦ Never use this equipment the pregnant person.
- ✦ Never use this equipment to treat bleeding, atherosclerosis thrombus, acute inflammation, arthritis and soft tissue fester.
- ✦ Do not put the equipment under direct light and besides heating appliance, especially important to choose a good place in summer.

- ✦ Keep dry. Guard against damp (like sauna room and bath house), otherwise, it'll cause damage.
- ✦ Banned from external force, avoid causing damage, especially using the hand shank, avoiding to falls to the ground.
- ✦ Banned wiping the instrument by chemicals (like ethyl alcohol, benzene and thinners), otherwise, it'll cause damage.
- ✦ Keep the equipment away from the children.
- ✦ Do not arbitrarily open instrument internal decomposition, once the instrument was opened and decomposed; it won't get any free protection and warranty.
- ✦ This equipment can not be used for other scope.

The following circumstances are prohibited to use this product:

- ✦ Edema disease or edema, hypertensive patients.
- ✦ The systemic violent convulsions or irritability.
- ✦ Heart disease patients (Ann pacemakers, etc.).
- ✦ Skin allergies, skinny or lose elasticity, skin damage and ulceration.
- ✦ Trauma fracture site or varicose vein, malignant parts.
- ✦ Severe blood loss, bleeding disorders and bleeding tendencies or clotting difficult.
- ✦ People do not know how to operate the instrument. Facial carried out the surgery or deep exfoliating recovery period is not on maturity. .
- ✦ Radiotherapy crowd of less than 3 months.
- ✦ The physiotherapy parts people with skin cancer.
- ✦ Prohibit using on the eye, the eye area, the ear and around the ear.
- ✦ Skin disease or inflammation of the site, the crowd had purulent acne.
- ✦ Itching, physical stimulation site prohibit the use of electrical stimulation feeling.
- ✦ The crowd Suffering from epilepsy, thrombosis, phlebitis, migraine are prohibited to use
- ✦ The crowd during the initial period after surgery or trauma are prohibited to use
- ✦ Teeth inserts the teeth crowd is prohibited to use.

Operating steps and notes :

- 1. clean the treatment areas.**
- 2. daub some cooling gel or Essential oil on the treatment areas**
- 3. make the fractional RF handle to treatment , adjust the energy from lower to higher gradually at the same time consult the customer feel and then adjust the energy according to customer feeling**
- 4. use the cryo handle to make cold compress after the treatment**

8. Treatment

Fractional RF treatment

Treatment range	Whole body lipolysis, Tightening after fat suction, Arm tightening, Thigh tightening, Striae gravidarum removal
Treatment frequency	Each 3-4 weeks for one treatment
1 Course of treatment	3-4 times
Time of each treatment	20-35 minutes on body

Lattice RF treatment

Treatment range	Eye pouch removal, Crow's-feet removal, lower eyelid wrinkle removal, Double chin, Face sliming, Pores contraction, Skin whitening, Skin rejuvenation, Wrinkle removal, Skin tightening and Face lift,
Treatment frequency	each 3-4 weeks for each treatment
1 Course of treatment	3-4 times
Time of each treatment	15~25 minutes for face

9. Equipment Maintenance

The equipment should be connected to earth when working.

The machine and accessories should be cleaned with normal saline, and wiped with clean duster cloth, and placed in cool and dry place.

Machine malfunction and troubleshooting:

Machine Malfunction	Solution
Power up and the machine no response	Check the power wire whether connected well, the emergency switch whether returned, and the key switch whether turned on
No output when start	Check if the display of output power is dynamic. Please restart the machine if static.
Machine overheat when working	If it is too long working, please shut down the machine and it will cool down itself. Or check if the power and voltage is normal?
No electricity of the whole machine	Check if the fuse wire is burnt and change another if it is burnt.

11. After-sale Service and Maintenance

1. The term of maintaining guarantee is main device 1 year and spare part 3 months from purchasing date according to the selling receipt. (Expendable is not included in it.) Others not included in maintaining guarantee or over guarantee time, we also supply to maintain and renew with free service but accessories cost charges. Please contact with the dealer if need change purchasing parts and easily expendable products.

2. We won't supply maintaining guarantee if troubles as below:

- a)Disassembling the machine by self;
- b)Fall it without caution;
- c)Lack of reasonable keeping and protection;
- d)Not operate according to the user manual.
- e)Expendable reasons

Any changes of machine design and specification are allowed without prior notice. If any queries, please feel free to contact with the local marketing company. All in one, we will do our best to serve you and also need your full cooperation. Thanks!