



ABARTH

ASSETTO CORSE



ABARTH TROPHIES 2013

TECHNICAL REGULATION

INDICE

1	FOREWORDS	3
2	CARS	3
3	SUBSTITUTIONS AND MODIFICATIONS	4
4	WEIGHT	5
5	ENGINE	5
6	ENGINE OVERHOULINGS	6
7	TRANSMISION	8
8	ENGINE LOOM AND ECU	8
9	ELECTRIC LOOM	9
10	SUSPENSIONS	9
11	BRAKES	10
12	ADMITTED TYRES	10
13	FUEL	10
14	COACHWORK	11
15	LIGHTING EQUIPMENTS	11
16	MANDATORY EQUIPMENTS	11
17	SAFETY	12
18	NOISE LEVEL	12
19	LANGUAGE	13

1 FOREWORDS

This Technical Regulation applies to all the Trophies where the "Abarth 695 Assetto Corse", "Abarth 500 Assetto Corse", "Abarth 500 Limited Edition" and "Abarth 500 ECO racing" Cars are eligible.

Technical Datasheets of each Car are integral parts of this Technical Regulation.

2 CARS

2.1 Eligible cars

The cars eligible to take part to the Abarth Trophies are:

- Abarth 695 Assetto Corse
- Abarth 500 Assetto Corse
- Abarth 500 Limited Edition, updated according to the provisions of the relevant Technical Datasheet
- Abarth 500 ECO racing

manufactured by Abarth & C Spa.

2.2 Compliancy

Cars must comply to:

- this Technical Regulation (an Attachment with specific articles for "Abarth 500 ECO racing" will be issued separately in a second time)
- the Bulletins issued further
- the specific "Technical Datasheet" for each Model
- Art. 277 (Group E – Category 1) of the Annex J to the 2013 Fia International Sporting Code

The conformity checks may include by comparison between the used components taken from the Cars and the corresponding brand new spare parts used as samples.

It is due to Competitors / Drivers to provide the Scrutineers and the Stewards of the Meeting with the proofs that his car wholly complies to Regulations in whatever moment of an Event.

2.3 Cars for disabled Drivers

Cars properly and exclusively adapted for disabled Drivers are admitted. Devices installed for this purpose must be solely activated by the Driver force.

The minimum weigh of these Cars must be the one given in Art.4 of this Regulation plus the weight of the additional equipments.

Prior to implement the modification/adaptation, the user must supply Abarth with a technical documentation describing the devices to be installed and get Abarth approval.

3 SUBSTITUTIONS AND MODIFICATIONS

3.1 Modifications

Each and every modification which is not expressly mentioned in this Technical Regulation is forbidden.

3.2 Substitutions

Each and every substituted or adjunct material and/or parts which is not expressly mentioned in this Regulation is forbidden.

3.3 Identical parts

Except what is expressly mentioned by this Regulation, each and every worn or damaged part may be replaced only by an identical part.

3.4 Welding dots

Modification of type and/or number of welding dots is forbidden.

Should some original weld to be recovered, a written authorization is to be asked to Abarth.

Abarth 695 Assetto Corse only: optional welding operations may be applied to the chassis within the freedom expressly provided by the relevant Technical Datasheet.

3.5 Threads

Ruined threads may be repaired with new threaded inserts (Helicoil type) having the same threaded hole diameter.

3.6 Lightenings

Each and every lightening or material removal which is not expressly mentioned by this Regulation is forbidden.

3.7 Steering wheel spacers

The use of spacers for the steering wheel is admitted, on condition to be manufactured and installed not to jeopardize safety.

3.8 Pedal box

The installation of insulating and/or anti-slip material on the pedal pads is admitted, on condition that the added element has a maximum 5 mm thickness. No modification is admitted on the pedal levers (see art.803 photo PED2 on the Technical Datasheets).

3.9 Footrest

Footrest surface can be increased in thickness and/or trimmed in anti-slip material.

3.10 Switches

It is admitted to add extensions to the window lift switch and to the

starter switch to ease their use or accessibility.

3.11 Gearshift command

Exclusively for the Abarth 500 AC, and with the purpose to reduce the selection and engagement movements, it is allowed to modify the lever according to Chapter 26 of the Abarth 500 AC User's Manual.

On condition to be prior authorized by Abarth, it is allowed to substitute the gearshift lever handle with another one having free shape.

3.12 Stone guard net

It is authorized to install a black net in steel wire behind the existing grids on the bumpers, on condition that their fixations aren't visible from outside.

The net must have a minimum 8 mm pitch and made with a maximum Ø1 mm diameter wire.

3.13 Rear twist beam axle

It is allowed to remove the "L" shaped bracket used for the headlights adjustment, as shown in chapter 27 of the User's Manuals.

4 WEIGHT

4.1 Minimum weight (car alone)

In whatever moment throughout each Event, the weight of the Car, with no Driver on board, must be no less than:

970 Kg for the Abarth 500 AC

940 Kg for the Abarth 695 AC.

4.2 Weight check

The measurement of the car weight can be done in whatever moment throughout each Event, in the condition the car is.

4.3 Weight check conditions

Before the weight check, it is NOT allowed to add or remove liquids.

5 ENGINE

5.1 Type

Only the engines supplied and sealed by Abarth, according to the Technical Datasheets may be used.

5.2 Identification

Each engine will be engraved with its identifying number.

Seals may be removed only by the Abarth technicians.

Should the seals removal operation be done during an Event, this must be authorized by the Scrutineers.

5.3 Engine modifications

Engines must be kept as provided by Abarth.

Each and every operation intended to modify their features are forbidden. Only the technicians charged by Abarth are authorized to operate on the engines.

Should the operation on the engine be done during an Event, this must be authorized by the Scrutineers.

5.4 Seals compliancy

Before being used in an Event, engines with missing or damaged seals must be returned to Abarth.

Abarth will apply new seals only after inspection and overhauling of the engines, charging the Customers with the related costs.

Should missing or damaged seals be found during an Event, this will be considered as a technical non conformity and lead to the cancellation of the lap times recorded in Qualification or the exclusion from the Races, upon decision of the Panel of the Stewards.

6 ENGINE OVERHOULINGS

6.1 Procedure

In the case of necessity, Competitors must return their engines to overhaul to the Structure appointed by Abarth in the following condition:

- turbocharger, ECU and engine loom included
- undamaged original seals
- without generator and engine supports
- be accompanied by the specific form provided by Abarth and duly filled in by the Competitor.

To replace the returned one, an overhauled engine, sealed and featuring the turbocharger, the ECU and the engine loom, will be given, with only the overhauling costs charged to the Competitor.

In the case of emergency only, the engine substitution may be done during an Event, following the procedure given above and compatibly with the available stock.

Request form:



Il sottoscritto Sig.

restituisce ad Abarth per la revisione il motore numero

che era montato sulla vettura rollbar numero

del conduttore con il numero di Gara.....

che consegna completo di centralina elettronica e cablaggio sul quale sono posizionati i seguenti sigilli:

	Numero dei sigilli
SIGILLO CENTRALINA ELETTRONICA	
SIGILLO CABLAGGIO CENTRALINA	
SIGILLO TURBINA	
SIGILLO ALBERO TURBINA	
SIGILLO INIETTORI	
SIGILLO CABLAGGIO MOTORE	
SIGILLO CABLAGGIO BOBINE	
SIGILLO TESTATA	
SIGILLO BASAMENTO	

segnalare eventuali sigilli mancanti o rotti

Riceve da Abarth il motore numero....., che sarà montato al posto di quello restituito, completo di centralina elettronica e cablaggio sul quale sono posizionati i seguenti sigilli:

	Numero dei sigilli
SIGILLO CENTRALINA ELETTRONICA	
SIGILLO CABLAGGIO CENTRALINA	
SIGILLO TURBINA	
SIGILLO ALBERO TURBINA	
SIGILLO INIETTORI	
SIGILLO CABLAGGIO MOTORE	
SIGILLO CABLAGGIO BOBINE	
SIGILLO TESTATA	
SIGILLO BASAMENTO	

Luogo / Data / Ora

Firma di chi restituisce

Firma di chi riceve e consegna

.....

.....



ABARTH

Abarth & C. S.p.A. - via Nuova Bolognese, 11/18 - Torino, Italy - Tel. +39 011 30 64 311 - Fax +39 011 30 44 385 - Capitale Sociale € 1.500.000,00
P.I. 01468410016 - C.F. 00821890011 - P.B.A. Torino 1008209 - Cod. Fiscale 00821890011 - Direzione e coordinamento art. 2462 c.c. del S.p.A.

7 TRANSMISION

7.1 Gearbox

The gearbox must be kept in compliancy to the description in the Technical Datasheet.

Reverse must be operative in whatever moment.

8.2 Clutch hydraulic command

It is allowed to split the flexible hose of the clutch hydraulic command, on condition to keep it recognizable as original, joining the two resulting parts with threaded, crimped or self-sealing connectors ("quick release plug" type).

These connectors must not be manufactured in Titanium.

This modification must be done in such a way that both parts (pedal box side and gearbox side) of the resulting flexible hose must be long not less than 150 mm.

8 ENGINE LOOM AND ECU

8.1 Type

Cars are equipped with a Bosch electronic control unit programmed with a specific software.

Engine looms and ECUs are sealed according to the Technical Datasheet.

Only the technicians charged by Abarth may operate on the seals.

Should the operation on the seals be done during an Event, this must be authorized by the Scrutineers.

Abarth reserves the right, throughout every event, to withdraw the ECU and give another identical one in return, by informing of this the Scrutineers.

Abarth reserves the right to assign the ECUs by drawing them between the Drivers, upon prior decision of the Panel of the Stewards.

8.2 Operations on engine looms and ECUs

Engine looms and ECUs must be kept as supplied y Abarth.

Each and every operation intended to modify their features are forbidden. Throughout each Event, when checking engine loom and ECU by using the proper Abarth equipment, the resulting data must match with the standard values regardless the fact that the seals are intact or not.

Only the technicians charged by Abarth are authorized to operate on engine looms and ECUs.

Should the operation on engine loom or ECU be done during an Event, this must be authorized by the Panel of the Stewards.

8.3 Seals integrity

Engine looms and/or ECUs with missing or damaged seals must be returned to Abarth before being used in an Event.

Abarth will apply new seals only after inspection and overhauling of the parts, charging the Customers with the related costs.

Should missing or damaged seals be found during an Event, this will be considered as a technical non conformity and lead to the cancellation of the lap times recorded in Qualification or the exclusion from the Races, upon decision of the Panel of the Stewards.

9 ELECTRIC LOOM

9.1 Additional power plug

It is authorized to add a 12V cc power plug, directly connected to the positive battery pole and to ground.

This plug may be only used to supply power to accessories which have no influence on the functioning and/or performances of the car.

9.2 Additional battery

It is allowed to add a quick release connector to plug in an external supplementary battery to start the engine.

9.3 Datalogger

It is allowed the installation of the digital dashboard (part no. 574xxxx) and related A.I.M. accessories according to the directions given by Abarth.

10 SUSPENSIONS

10.1 Front camber

The front camber value is free and can be varied only by substituting the adjusting plates (see Technical Datasheet art.707 drw.PSTF)

The slot on the McPherson strut, which determines the range, can not be modified.

10.2 Rear camber and toe-in

The rear camber and toe-in values are free and can be varied only by changing the number of spacers and shims adjusters (see Technical Datasheet art.707 drw. PSTR 1 and PSTR 2).

10.3 Track

On the basis of the freedom given by Art. 10.1 and 10.2, the track value is free.

Nevertheless, the vertical section of the complete wheel (rim + tyre) above the hub center must be covered by the bodyshell.

10.4 Shock absorbers

The hydraulic set up of the shock absorber is free.

10.5 Ride height

The ride height value is free, on condition that no suspended part of the car touches the ground should both tires on the same side are deflated.

11 BRAKES

11.1 Brake pads

Brake pads are free, on condition that their rubbing surface isn't increased.

11.2 Air cooling channels

The material of the front brake cooling channels is free, on condition that:

- the inner diameter is below 51 mm
- have no other function than channeling cooling air to the brakes

12 ADMITTED TYRES

The tyres allowed are only:

- Dry weather tyres (Slick) 20/61-17
- Wet weather tyres (Rain) 20/61-17

12.1 Supplier

The appointed Manufacturer will distribute its Tires directly on the circuits through a commercial structure which will provide also a tire service support to the Competitors.

12.2 Use

Tires must be used as distributed by the appointed Supplier.

Each and every operation conceived to modify their feature (cuts and grooving, influence on the compound structure, heating with whatever artificial process or the use of systems to retain the heat) are forbidden.

The use of pressure control valves is forbidden.

All this applies to tires for both dry and wet tarmac.

Only the Tire Manufacturer, through Abarth, may authorize and specify modifications to the tire features.

12.3 Variations

In the case that the Tire Manufacturer, in agreement with Abarth, decides to vary, along the Season, the size and/or the type of tires, from that moment on only the tires of the new size/type are allowed.

12.4 Fitting

Each cars must be fitted with no.4 tires of the same type (slick/rain).

13 FUEL

13.1 Type

All Cars must exclusively use one specific 102 RON petrol fuel, complying to the FIA Annex J and distributed to all Competitors on the circuits, according to the provisions of the Sporting Regulations.

Each and every alterations of the mandatory fuel are forbidden.

Ambient air only may be used as oxidizer.

Fuel may be cooled only with unaltered ambient air.

13.2 Sampling for testing

All cars must be equipped with the proper fuel sampling quick-release valve, as described by the "Technical Datasheet".

Nevertheless, Scrutineers retain the right to request to take the samples by whatever point on the fuel circuit.

14 COACHWORK

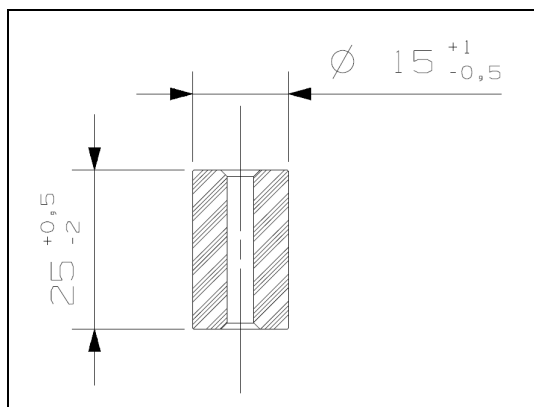
14.1 Wheel arches edges

It is authorized to hammer or bend the metal edges or trim the plastic edges of fenders and bumpers where protruding into the wheel arches, on condition not to modify their external contour.

15.2 Windows

In the lower rear fixing point of left and right rear side window (see photo 2), it is allowed to add a spacer having dimensions complying with scheme 1.

The material of the spacer is free, as is the threaded element required to fasten the window in open position.



Scheme 1

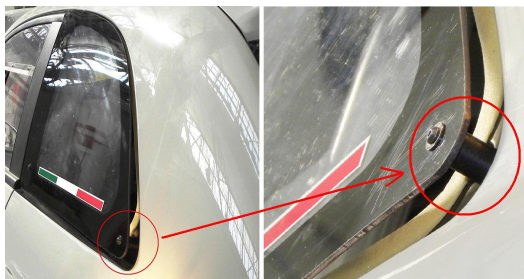


Foto 2

15 LIGHTING EQUIPMENTS

15.1 Stop lights and rear fog lights

Original stop lights and rear fog lights must be operative throughout each Race, although run in daylight.

16 MANDATORY EQUIPMENTS

16.1 Steering wheel

The steering wheel is free, provided to be manufactured by TBA.

16.2 Wheel rims

Only the following rims, manufactured by OZ Racing, are allowed:

5740949 - 7"x 17" size for Abarth 500 Assetto Corse and Limited Edition

5744051 - 7,5"x 17" size for Abarth 695 Assetto Corse.

17 SAFETY

Throughout all the Events, Cars must comply to Art.277 of the FIA Annex J.

17.1 Safety structure

Cars are equipped by a safety cage installed, by Abarth and homologated by CSAI, which is forbidden to modify.

17.2 Driver's seat

The Driver's seat is free, provided to be manufactured by TBA and in conformity to Art.253.16 of the FIA Annex J.

17.3 Safety harnesses

The Safety harness is free, provided to be manufactured by TBA and in conformity to Art.253.6 of the FIA Annex J.

17.4 Fire extinguisher

The fire extinguisher is free, provided to be manufactured by TBA and in conformity to Art.253.7.1 of the FIA Annex J.

17.5 Window net

The window net is free, provided to be manufactured by TBA and in conformity to Art.253.11 of the FIA Annex J.

17.6 F.I.A. roll cage padding

The installation of FIA n° 8857-2001 homologated padding is mandatory where the Driver's helmet may impact with the roll cage with safety belts fastened.

17.7 Towing eyes

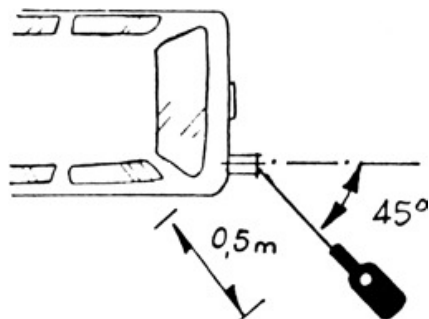
Front and rear towing eyes are free, provided to be in conformity to Art.253.10 of the FIA Annex J and having an inner diameter of Ø50 mm minimum.

18 NOISE LEVEL

The maximum noise level is 98 dB(A), measured with the following procedure:

- stationary vehicle, dry ground, hard surface (with no grass, ecc, ecc)
- noise meter located at 50 cm from the exit of the exhaust pipe, at a 45° angle from its axis
- engine rotating at 3.800 rpm stationary

- the result will be the average value calculated among no.3 recorded sound level values
- the result, obtained in the above mentioned conditions, do not overcome the maximum limit



19 LANGUAGE

In the case of disputes or doubts, the text written in Italian will be considered valid only.