

XBOX360 Joystick timer board

user manual

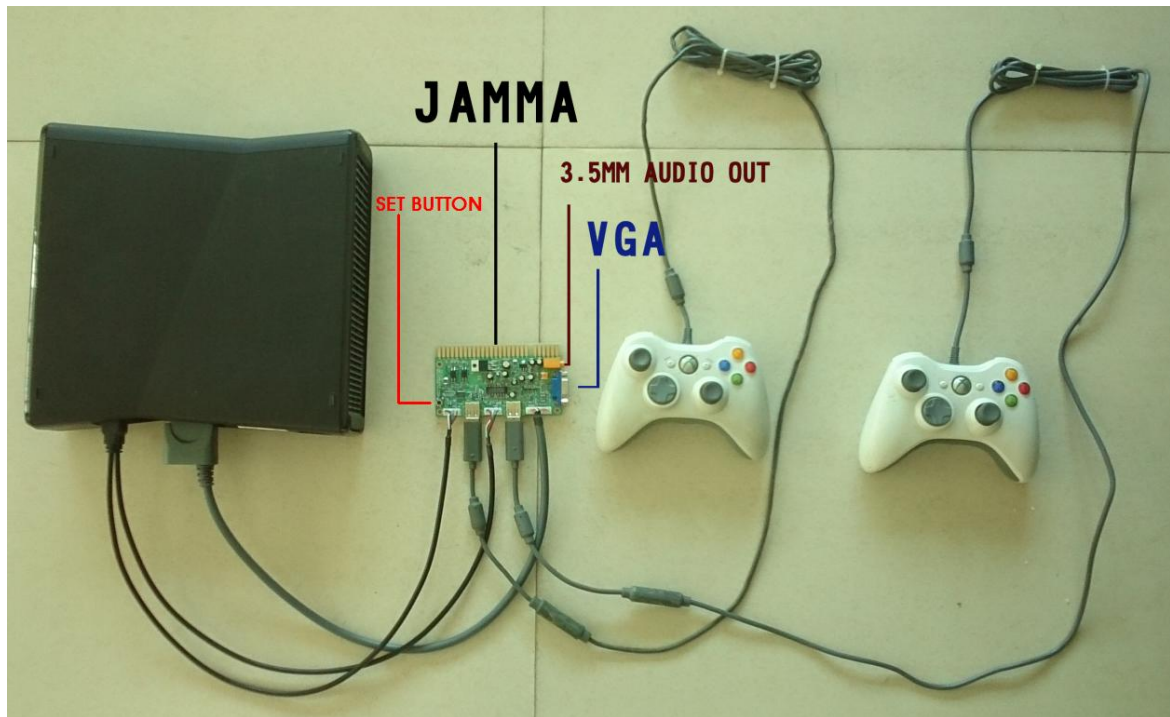
1, Connection Description:

1) XBOX360 TIMER JAMMA PINOUT (Picture1)

Solder Side(BOTTOM)		Parts Side(TOP)	
2P TABLE		1P TABLE	
GND	A	1	GND
GND	B	2	GND
+5V	C	3	+5V
+5V	D	4	+5V
	E	5	
+12V	F	6	+12V
	H	7	
	J	8	
	K	9	
SPEAKER-	L	10	SPEAKER+
	M	11	
	N	12	
	P	13	
	R	14	GND
	S	15	
2P COIN SWITCH	T	16	1P COIN SWITCH
START	U	17	START
	V	18	
	W	19	
	X	20	
	Y	21	
2P SHOT 1(NO USE)	Z	22	
	a	23	1P SHOT 2(NO USE)
	b	24	
	c	25	
	d	26	
	e	27	
GND	f	28	GND

Picture1

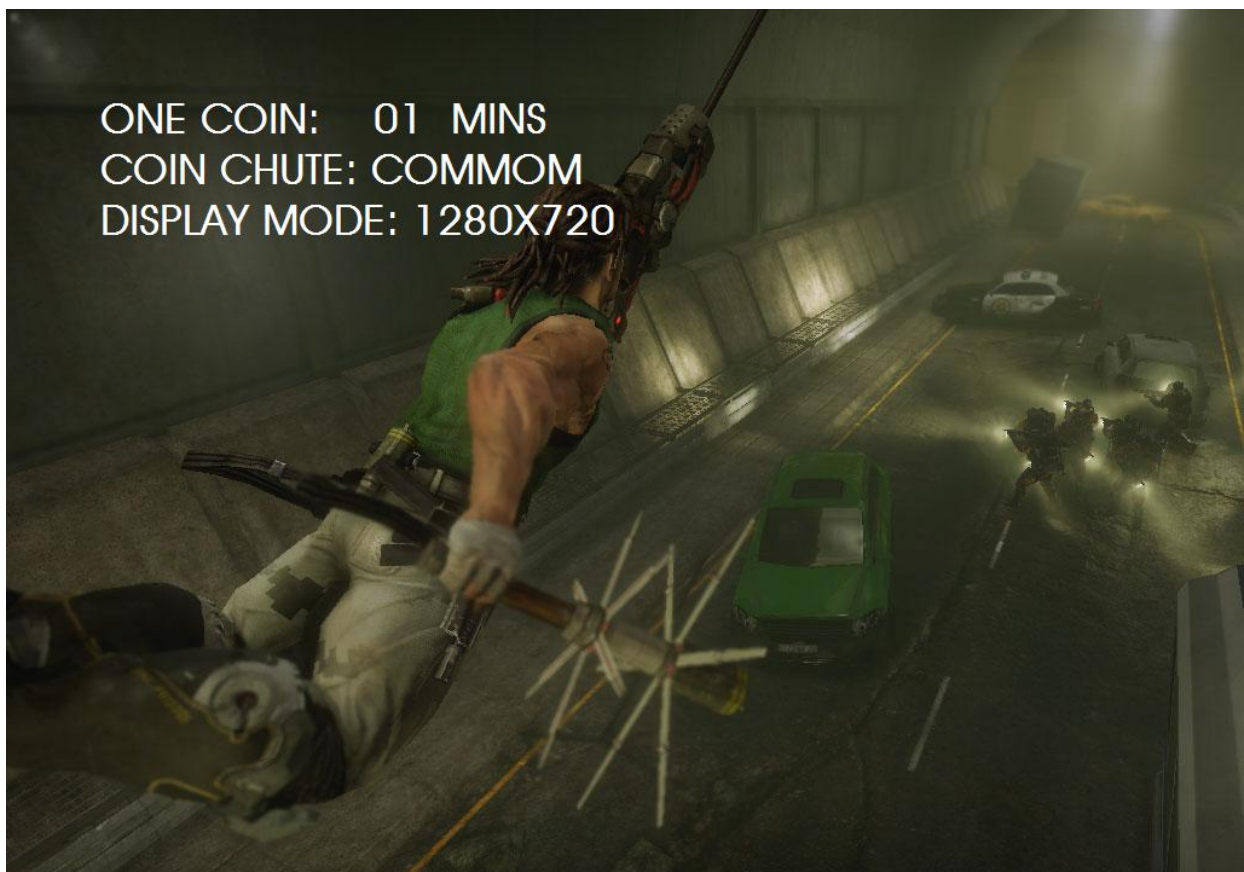
2)Original cable XBOX360 gamepad and JAMMA are available, the connecting schematic diagram of IO board, host and gamepad (Picture2)



Picture2

2, Instructions:

- 1) Suggested TIMER BOARD and host start at the same time with electricity, after successful start up, the screen will display the following text, shows the current setting state. (Picture3)



Picture3

2) After 5 seconds will shows the following text(Picture4), now can pay to start the game with gamepad. P1/P2 displays the Playtime, Playtime will be hidden after 5 seconds, When the coin 1P or 2P again or press the start button again to display five seconds, Do not insert coins or no playtime, will always show. When the playtime remaining 10 seconds, Will be prompted COUNTINE?, Then do not insert coins will be return to [INSERT COIN] screen (Picture5)



Picture4



Picture5

3, Settings:

- 1) playtime setting>>Press [SET BUTTON] on Picture2, will displays setting text (Picture6), the red 02 represent the playtime of one coin, can choose from 01~60 minutes, use the JAMMA START1 BUTTON to change, finished to press JAMMA START2 BUTTON to the next page:[coin chute setting].

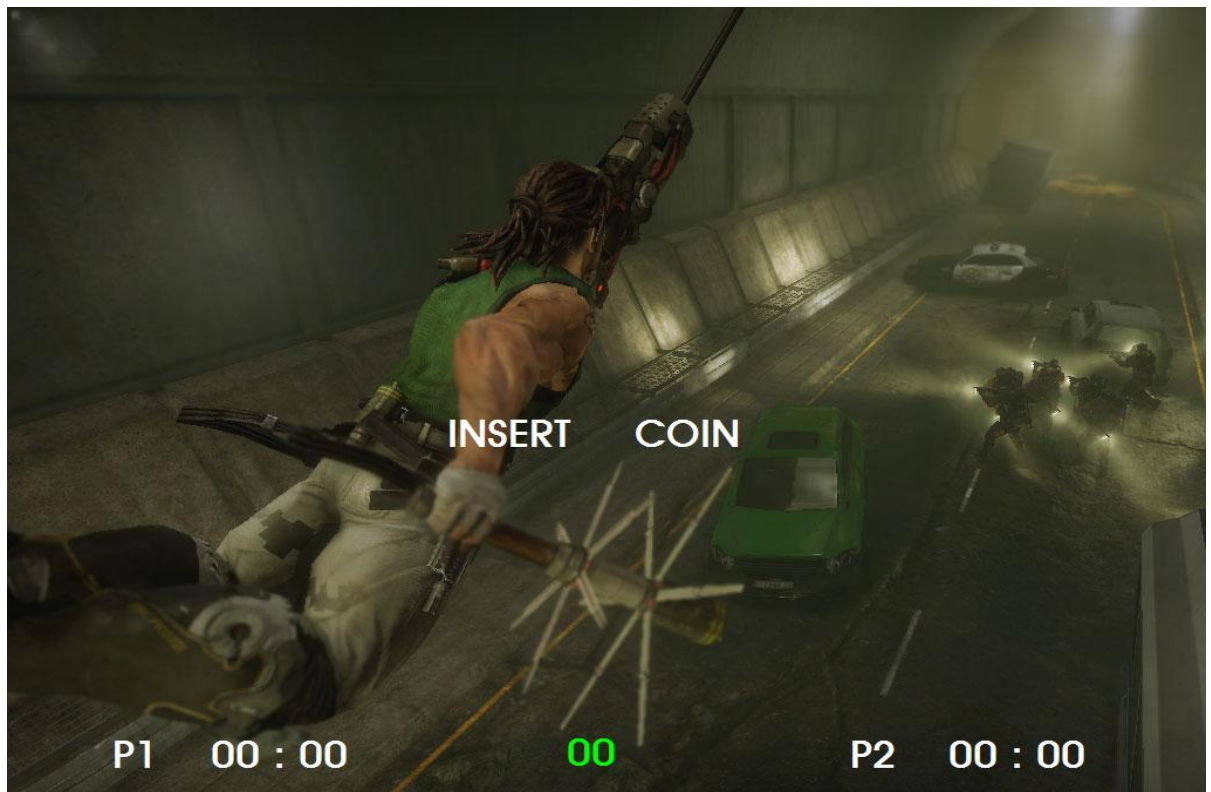


Picture6

2) Coin chute setting>> use the JAMMA START1 BUTTON to change the coin chute, there are three types: **COMMOM**、INDIVIDUAL(Picture7)、CENTRAL(Picture8), finished to press JAMMA START2 BUTTON to the next page:[Text and host resolution match setting]

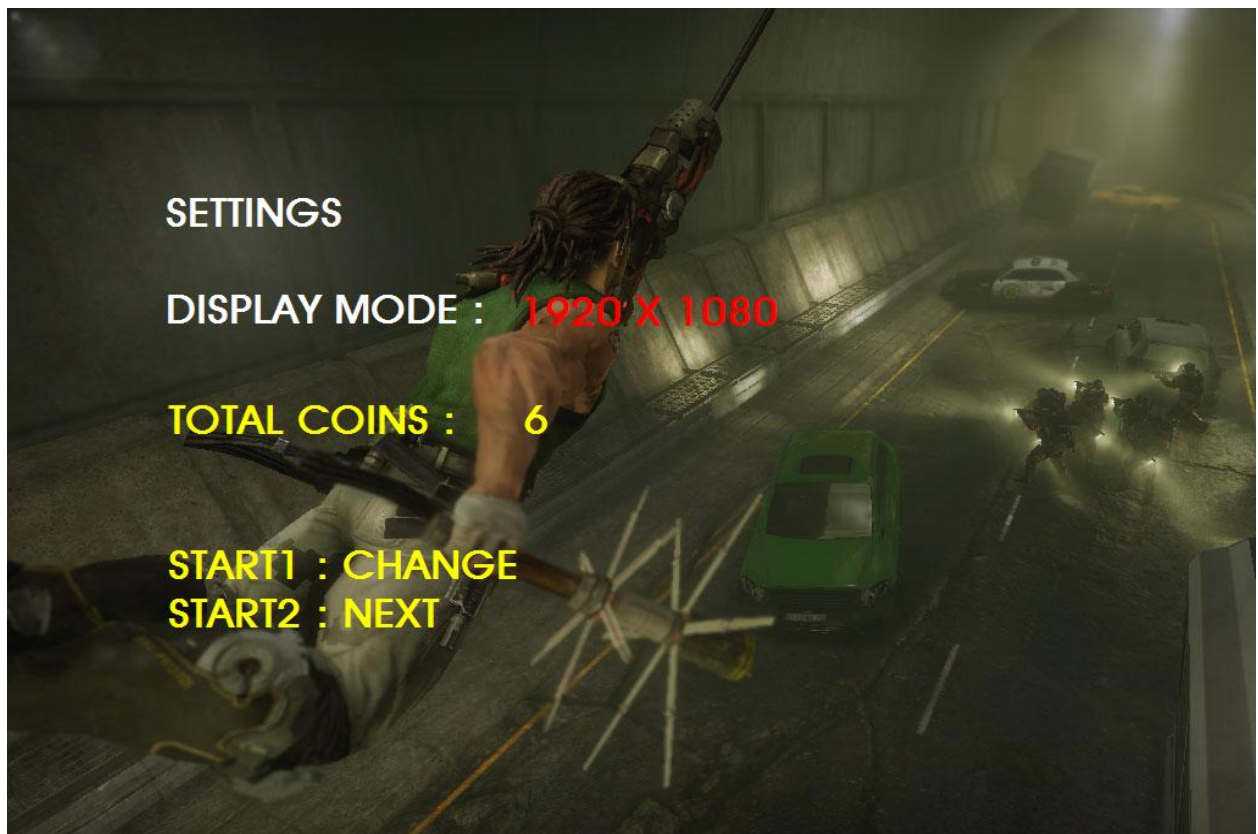


Picture7

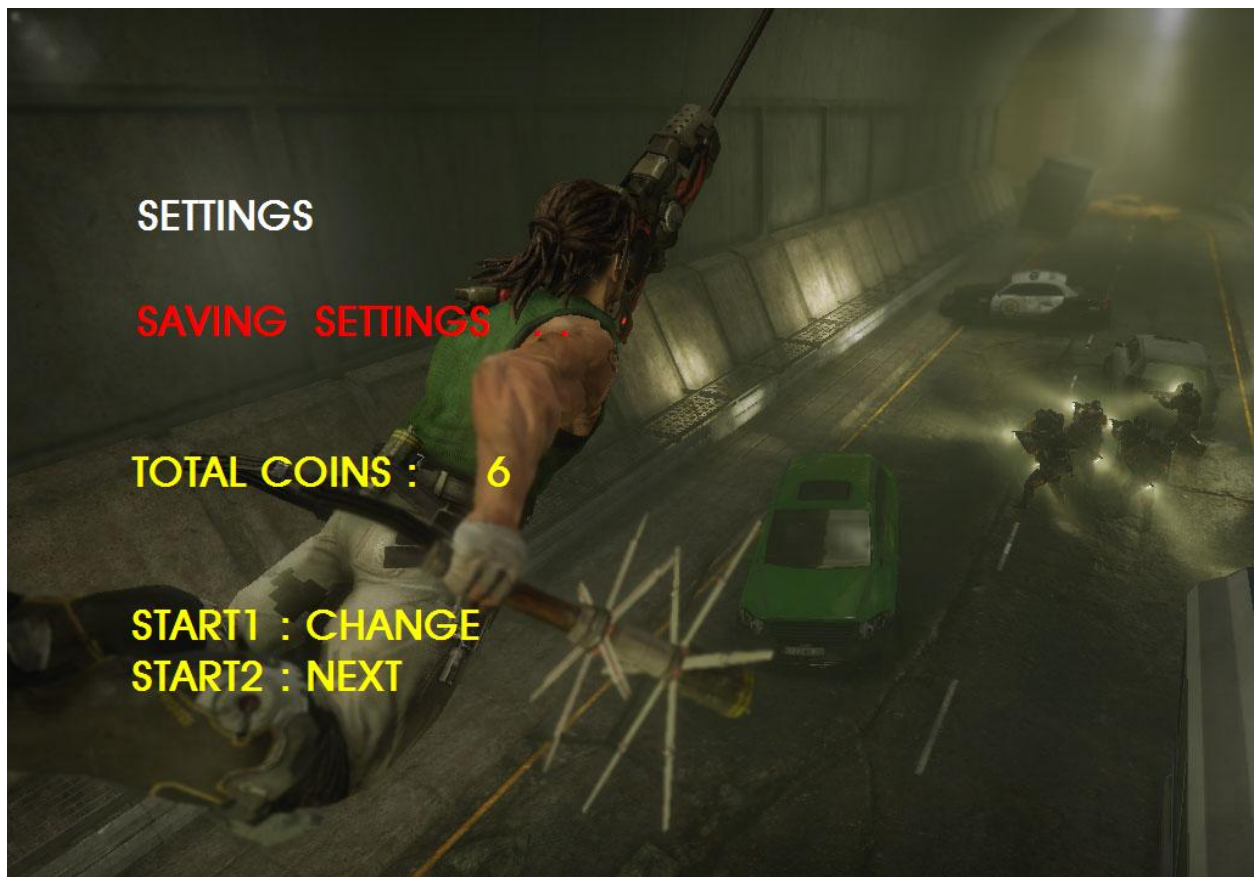


Picture8

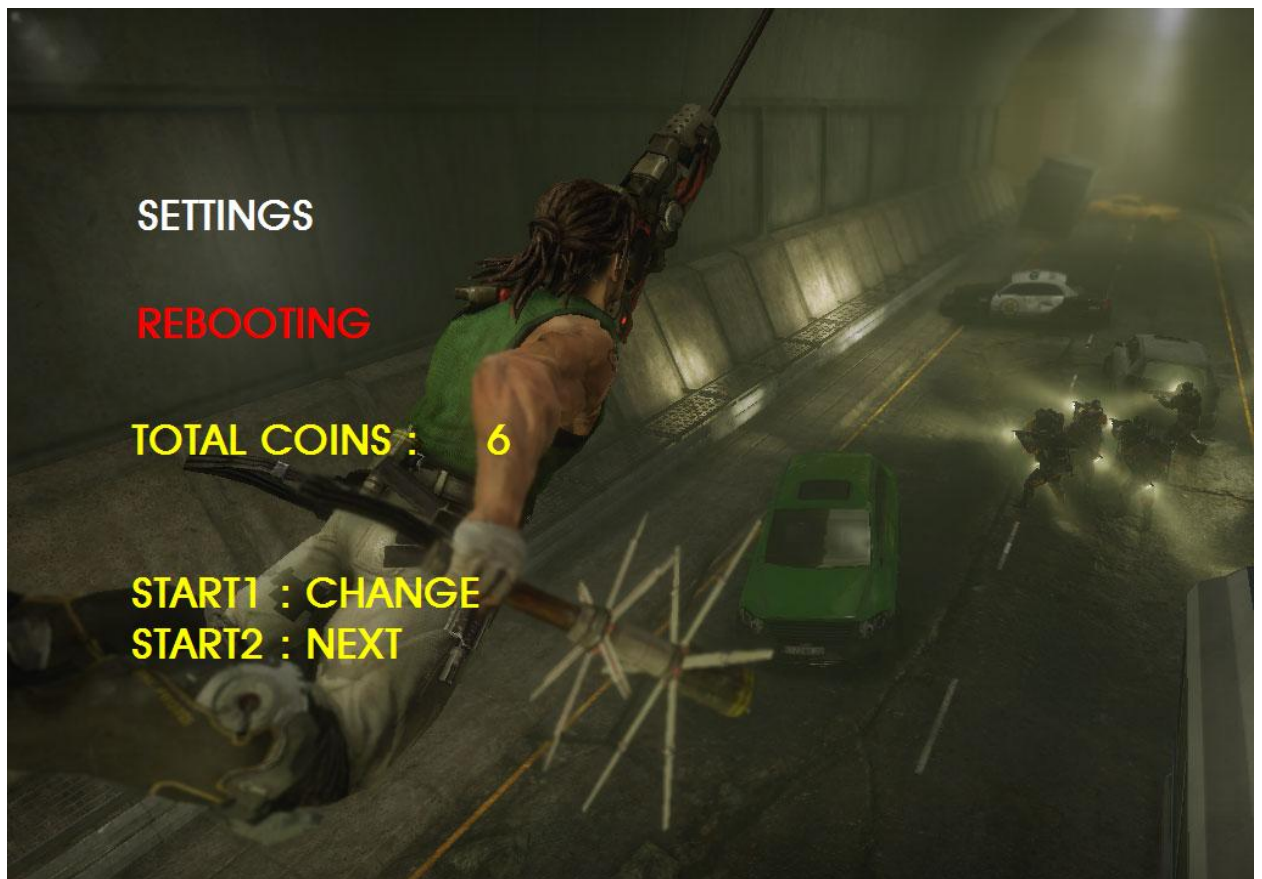
3) Text and host resolution match setting>> use the JAMMA START1 BUTTON to change the resolution which match text and host, there are 6 kinds of display resolution setting: **1920X1080**、1440X900、1280X768、1280X720、 1024X768、640X480(Picture9), finished to press JAMMA START2 BUTTON will be auto save and reboot. (Picture10) (Picture11)



Picture9



Picture10



Picture11

4) Total Coins record clear >>TIMER BOARD can records coins, see TOTAL COINS in the setting menu. To clear this record, please press SET BUTTON when power-off; release the button after power-on three seconds, then keep pressing JAMMA START1 BUTTON, wait until screen displays COINS CLEAR, clear success.