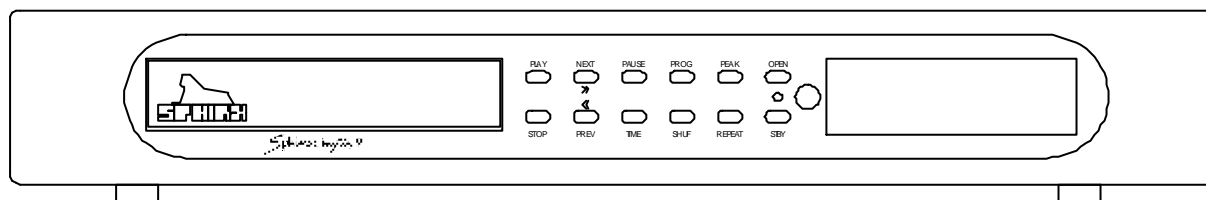


USER MANUAL

MYTH 9 MK2

CD PLAYER



1. UNPACKING.....	4
2. SPHINX WARRANTY CARD	4
3. THE CD PLAYER AT A GLANCE.....	5
Front panel	5
Rear panel.....	6
Display	7
4. INSTALLATION AND CONNECTIONS	8
Installation.....	8
Connecting the mains cable.....	8
Audio connections	8
Connecting the pre-amp.....	8
Connecting the optical cable	8
5. OPERATION.....	9
Power on.....	9
Playing a CD	9
Different time display.....	9
Playing a different track.....	9
Playing tracks in a different order.....	9
Program Play (PROG).....	9
<i>Programming tracks</i>	<i>9</i>
<i>Playing the programmed tracks.....</i>	<i>10</i>
<i>To stop Program Play</i>	<i>10</i>
Shuffle Play (SHUF).....	10
Repeat Play (REPEAT).....	11
To temporarily halt Play (PAUSE).....	11
To stop Play (STOP)	11
Power off	11
Special modes for recording CD's	11
The PEAK mode	11
The FADE mode	11
The best way to treat a CD	11
<i>Removing it from the box.....</i>	<i>12</i>
<i>Cleaning</i>	<i>12</i>
<i>Storing.....</i>	<i>12</i>
7. CARE AND MAINTENANCE	13
8. TECHNICAL SPECIFICATIONS	13

Congratulations on your purchase of the Sphinx Myth 9 Mk2 !

You are now part of an ever-increasing group of quality-conscious audiophiles using Sphinx products.

We are very proud of the tradition connected with the SPHINX name, especially concerning audio quality perfection.

This manual will help you to gain a maximum amount of pleasure and quality from your new Sphinx Myth 9 Mk2 CD player.

The Myth 9 Mk2 is a true 24 bit CD player using the newest technology based on the Sphinx Project 32 CD player that received rave reviews all over the world. Two independent high end Burr-Brown PCM1716 24 bit 96 kHz sampling D/A converters will guarantee unsurpassed detailed audio reproduction. A unique feature is that the output sections are of a totally discrete Class A design. The "air core" power transformer uses completely separated sections for the digital and analogue supply. Combined with the integrated power line suppression filter this ensures an extremely high S/N ratio.

In addition to the usual functions like Program, Repeat and Shuffle Play, the Myth 9 Mk 2 also offers a Peak / Fade mode for easy and trouble-free recording from a CD.

By activating the Peak mode the player will search for the highest signal level on the CD. After finding this section it will be continuously repeated, making it very easy for you to adjust the maximum record level on the recorder. The Fade mode will slowly decrease the output level to 0 after which the CD player will select the Pause mode.

Almost all functions are accessible with the supplied Sphinx CD player *Remote Control*.

To obtain the maximum quality from this CD player it is necessary to use it with top quality audio components, preferably with other Sphinx components.

Please read this manual carefully before you install or use the Myth 9 Mk2. It is important to familiarise yourself with the special functions, operation and possibilities of the Sphinx Myth 9 Mk2.

Your local dealer will be able to answer any questions concerning other Sphinx audio components.

1. UNPACKING

Before leaving the factory every Myth 9 Mk2 is subjected to stringent and extensive technical and exterior quality inspection.

This ensures you will enjoy many years of high quality audio performance from a perfect-looking product.

After unpacking your Myth 9 Mk2 we therefore recommend you carefully check it for any transport damage.

In case of damage: please contact your Sphinx dealer immediately and retain all packing materials for possible proof of damage and possible claims.

Even if the component is in perfect condition you should still keep the packing materials. If you need to transport your Myth 9 Mk 2 at a later time it will be best protected by the original packing materials.

2. SPHINX WARRANTY CARD

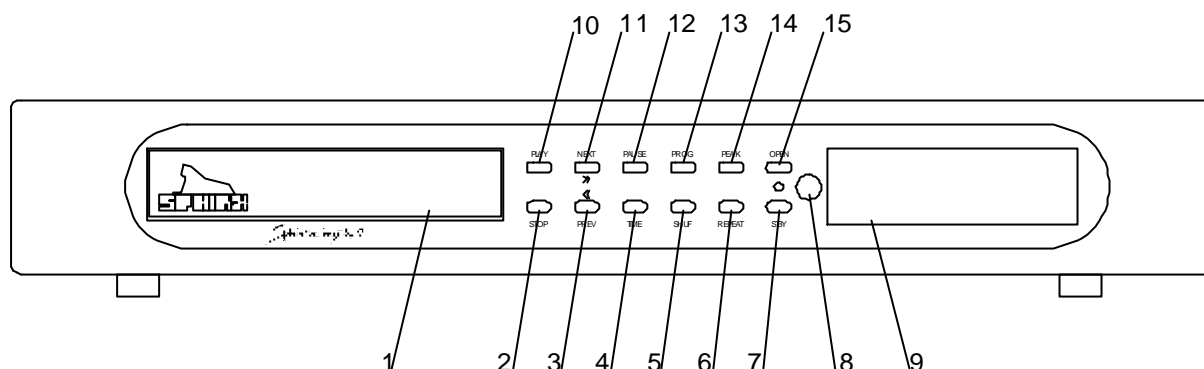
Please take this opportunity to fill out the warranty card supplied by your local distributor.

Follow the instructions on the card or consult your dealer.

Please send the card as soon as possible to the return address.

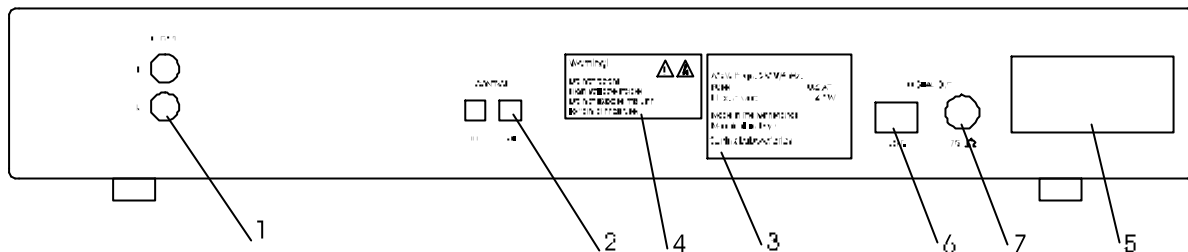
3. THE CD PLAYER AT A GLANCE

Front panel



1. **CD tray:** To be opened with the OPEN button. Place the CD here.
To close: press the OPEN button or the PLAY button or softly push against the front of the tray.
2. **STOP:** To stop CD playback.
3. **PREV:** To select a *lower* number track.
If you hold the button depressed it will activate a fast *reverse* search in the current track.
4. **TIME:** This button selects the timer mode (right-hand side of display):
 - ⌘ Remaining Track Time,
 - ⌘ Total Remaining Time,
 - ⌘ Track Time.
5. **SHUF:** To select the Shuffle Play mode, which plays the tracks in random order. The SHUFFLE indication will light.
6. **REPEAT:** To activate the Repeat Play mode. The Play, Shuffle Play and Program Play modes will be repeated until you deactivate the function.
The REPEAT indication will light.
7. **STBY:** To switch the CD player on and off. The LED next to the button indicates the selected function:
 - on LED is off
 - off LED is red
8. **Receptor window** for the IR signals from the Remote Control.
9. **Display:** This will show all important data (more information can be found on page 6)
10. **PLAY:** To start playback of the track indicated in the left-hand side of the display
Note: If the CD tray is still open, it will close automatically.
11. **NEXT:** To select a *higher* number track.
If you hold the button depressed it will activate a fast *forward* search in the current track.
12. **PAUSE:** To temporarily interrupt the CD playback. The display will show the PAUSE indication. Pressing this button again (or PLAY) will resume playback.
13. **PROG:** To select the Program mode: this enables you to play only certain selected tracks. The display will show »PROGR« and the PROGRAM indication will blink.
14. **PEAK:** Pressing this button during STOP activates the Peak Search mode. The PEAK indication will light.
Pressing this button during Play mode activates the Fade mode.
15. **OPEN:** To open and close the CD tray.

Rear panel



1. **OUTPUT L&R:** Connect this to the left en right CD inputs of the amplifier.
2. **Control IN & OUT:** To connect the optical cable from the pre-amplifier and to the next Sphinx component (e.g. tuner).
3. **Manufacturer's label:** This shows important data for the component, such as serial number and mains power voltage.
4. **Warning!:** This shows important information about the safety regulations for the Myth 9 Mk2.
5. **AC Power:** Connect the mains cable to a mains power outlet (100 - 240 VAC). The mains fuse is placed behind the cover.
6. **Digital out:** TOSHLINK digital output (optical) for digital interlink with a separate DAC module.
7. **Digital out:** COAX digital output (75 Ohm) for digital interlink with a separate DAC module.

Display

SPACE			TRACK		PEAK		REM		TRACK		TIME		REPEAT 1		
PAUSE			8		8		8		8		8		SHUFFLE		
FTS													PROGRAM		
(((O															
1	2	3	4	5	6	7	8	9	10	11	12	13	14	15	

- TRACK:** After 'reading' the data from a newly placed CD and/or during STOP mode here you will see the total number of CD tracks. In all other modes the current track number is shown here.
- TIME:** After 'reading' the data from a newly placed CD and/or during STOP mode here you will see the total playing time of the CD. In all other modes this will show:
 - ⌘ TRACK TIME or
 - ⌘ REM TRACK TIME (remaining track time) or
 - ⌘ TOTAL REM TIME (remaining CD time).
 You may select one of these modes with the TIME button (4).
- 1 – 15 +:** This line of numbers indicates all CD tracks. If there are more than 15 the '+' will also light. The total amount of tracks is shown under TRACK (1) in STOP mode. During Program Play mode only the programmed tracks will light. As soon as a track has been played (during any Play mode) the track number will be extinguished. So only the remaining tracks tot the last one will be lit.
- PAUSE:** Indicates that the Pause mode is activated with the PAUSE button (12).
- (((O:** Will light when you press a button on the Remote that is 'understood' by the CD player. Also indicates whether Remote Control commands are properly received.
- PEAK:** Blinks when you have activated the Peak mode with the PEAK button (14).
- REPEAT 1:** Lights after pressing the REPEAT button (6) once. The Play mode will be repeated only once. Another press on the button will change the indication to...
- REPEAT:** This indicates that the Play mode will be repeated continuously. Another press on the button will de-activate the mode and extinguish the indication. This may be done anytime during Play mode.
- SHUFFLE:** Indicates that the Shuffle Play mode is activated with the SHUF button (5).
- PROGRAM:** *Blinks* during the Program mode when selecting tracks. *Lights* during Program Play mode.

4. INSTALLATION AND CONNECTIONS

Installation

The Myth 9 Mk2 will not become very hot, so placement is not critical, although you should not place it on top of or near other heat-radiating equipment (such as power amps) or in direct sunlight.

If you use the CD player in a closed cabinet or on a bookshelf, please ensure unrestricted ventilation around the component.

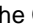
To prevent any possible interference keep power supply cables away from all audio cables.

If all these conditions are met, the Myth 9 Mk2 will perform to the extremely high standards it is designed for.

Connecting the mains cable

Before you connect the cable please check whether the mains voltage indicated on the manufacturer's label on the rear panel is the same as your local mains voltage.

If not: please contact your dealer and do not connect the component to the mains.

You switch the CD player on or off with the  STBY button. This way the electronic circuits will be kept at optimum working temperature so you can enjoy maximum audio quality immediately after switching on. Additionally it significantly increases the life span of the component.

Connect the mains cable after you have connected all other components in the system and have double-checked all connections (see Chapter 5.).

Audio connections

Before you start connecting equipment it is always wise to check whether all the mains power cables of all components are disconnected from the mains outlets!

This will prevent any damage to the loudspeakers and amplifiers caused by incorrect wiring or settings.

Make sure you connect L and R properly. Most cinch cables use Red for the Right channel and White or Black for Left.

The cinch connectors on the Myth 9 Mk2's rear panel have a red centre for the right channel and a white one for the left channel.

When making the connections please refer to the descriptions for parts 1. to 5. on page 5.

Connecting the pre-amp


Connect OUTPUT L and R (1) to the appropriate CD IN connectors of the amplifier using a normal cinch cable (but of top quality!).

Connecting the optical cable

The Myth 9 Mk2 has a CONTROL IN and a CONTROL OUT optical jack. It can therefore be remotely switched on and off by another Sphinx component and it can also remotely switch other Sphinx components to stand-by.

When the CONTROL OUT of another Sphinx component (most likely the pre-amp) is connected to the CONTROL IN (2) of the Myth 9 Mk2, you do not have to use the O / I switch (5). The CD player will automatically select Stand-by mode as soon as the other component is set to stand-by.

Through the CONTROL OUT (2) this control signal may be sent to other Sphinx components (e.g. tuner, power amps, etc.).

Ensure proper connection of the optical cables, otherwise the LED next to the  STBY button (7) on the front panel may remain off even though the stand-by mode is activated.

If the Myth 9 Mk2 is placed in strong direct sunlight the stand-by mode may self-activate. In that case you should place the supplied dummy connector in the CONTROL IN (2) (but only if this is not being used).

5. OPERATION

Power on

Switch the Myth 9 Mk2 on with the **STBY** button. It automatically checks whether there is a CD in the tray (the display shows »READ«). If there is no CD the display will show »noDISC«.

Playing a CD

Press the **OPEN** button (15): the tray opens. Place a CD in the tray and close it with the **OPEN** button (or the **PLAY** button or by gently pushing the tray inwards).

When the tray is closed the display shows »READ« after which you will see the total number of tracks (max. 99, left) and the total playing time of the CD (right) in minutes:seconds. The lower horizontal row of numbers indicates all tracks that have not been played (in this case all of them).

With a press on **PLAY** you start the playback of Track 1. The display now shows the track number (left) and the track's playing time from the start (right). This last indication will increase as long as the CD is playing.

All tracks will be played sequentially in the normal order.

Different time display

With the **TIME** button you may select between three different time displays. TRACK TIME is the default. With each press on the button you then select in this order:

REM TRACK TIME: remaining track time or

TOTAL REM TIME: remaining CD time or

TRACK TIME: track time from start of play.

Playing a different track

If you would like to play another track then you may select it in a number of ways.

Each press on the **NEXT** button will select the *next* (higher number) track.

Example: To select track 5 while track 1 is playing depress the **NEXT** button 4 times. The display shows the new track number (left) and in the **1-15+** line the numbers from track 5 to the last will be lit.

Each press on the **PREV** button will select the *previous* (lower number) track.

From track 1 you select the last track on the CD with one button push.

The display shows the new track number (left) and in the **1-15+** line the numbers from the current track to the last will be lit.

From the Remote you may directly select the track number with the **1-0** buttons (for more information, see page 10).

Playing tracks in a different order

Normally the tracks are played in the order of the CD. There are however three modes that allow you to change the playing order and even can prevent tracks from playing altogether.

The three modes are Program Play (PROG), Shuffle Play (SHUF) and Repeat Play (REPEAT).

Program Play (PROG)

With Program Play you can change the playback of a CD:

Only play the tracks you want to hear (and thus skip the others).

Play certain tracks a number of times.

Change the complete playing order.

Select those tracks that exactly fill one side of a tape.

To do this you first have to select the wanted tracks and program them into memory. Then you can start Program Play mode.

Note: Tracks will be played in the order of programming.

Programming is only possible when the CD has stopped (STOP). If you press the **PROG** button during Play mode the display will show »GO TO STOP«, while nothing further will happen.

Programming tracks

Press the **PROG** button.

The display shows »PROGR« and the PROGRAM indication (right) blinks.

Select the first track with the **NEXT** or **PREV** button.

The display shows under TRACK the track number.

Press the **PROG** button to store the track in memory.

The display will show:

Under TRACK: the programmed tracks (in this case 1...).

Under TOTAL TIME the total playing time of the program.

In the 1-15 line all the selected tracks.

Note: To play the selected track more than once, press the ? ? PROG button the required number of times.

⏮ Select all other tracks with the same method.

After each selection the display will be updated.

Note: You can program up to 30 tracks. If you try to program more the display will show » FULL «.

Note: If you have selected a wrong track you can not delete it from the program. You then have to press the ⏮ STOP button twice and redo the whole Programming procedure.

Playing the programmed tracks

After you have finished programming the tracks you can start playing the program.

⏮ Press the ⏮ PLAY button. The PROGRAM indication (right) will light and playing starts with the track that has been programmed first. All selected tracks will then be played in the order of programming.

⏮ You may also press the ⏮ PAUSE button. The CD player first locates the start position of the first programmed track and then selects Pause mode. This might be handy when recording a tape. You first can select the recorder to record-ready and position the tape at the correct position. You may start Program Play with another press on the ⏮ PAUSE button.

Note: If you select the TOTAL REM TIME display with the ⏮ TIME button the display will show the remaining time for the program.

To stop Program Play

To temporarily stop Program Play: press the ⏮ STOP button *once*. Pressing the ⏮ PLAY button will resume Program Play.

To stop Program Play *completely*: press the ⏮ STOP button *twice*.

The display then will show the same CD data as right after placing a new CD in the tray.

Shuffle Play (SHUF)

The Shuffle Play mode lets you play the tracks in random order during Play and Program Play modes.

The ⏮ SHUF button activates this mode (the SHUFFLE indication will light) and random play will start immediately.

At any time you may de-activate this mode with another press on the ⏮ SHUF button. The playback will continue and after the current track the next track will now be played and not a random track.

Repeat Play (REPEAT)

The Repeat mode will repeat the selected Play mode: Play, Program Play and Shuffle Play. There are two options.

Repeat 1: Play will be repeated once.

Repeat: Play will be repeated continuously.

You may select the Repeat 1 mode by pressing the REPEAT button once: the REPEAT1 indication will light.

With a second press you select the Repeat mode: the REPEAT indication will now be lit.

Another press de-activates the mode.

To temporarily halt Play (PAUSE)

All Play modes can be temporarily interrupted with the PAUSE button. Another press on this button (or on the PLAY button) will resume Play mode.

To stop Play (STOP)

Pressing the STOP button during any mode will de-activate this mode completely, the CD will stop and the display will show the same CD data as right after placing a new CD in the tray.

At any time you can also press the OPEN button: all modes will stop immediately and the tray will open.

Power off

You switch the Myth 9 Mk2 off (to stand-by) with the STBY button (7).

Special modes for recording CD's

Recording a CD onto tape is highly simplified with two special modes: **Peak** and **Fade**. The first will automatically find the loudest signal level on the CD, the second enables you to fade tracks in and out.

The PEAK button (10) activates the: Peak mode when the CD has stopped (STOP)
Fade mode when the CD is playing.

The PEAK mode

In Peak mode the CD player scans and analyses the CD (the PEAK indication will blink). Finally the display will show under TRACK the track number and under TRACK TIME the time code of the loudest part on the CD.

About 3 sec of this part will then continuously be repeated (the time display will fallback to the starting point) and the signal is sent to the output. You can now simply adjust the recording level of the recorder to the maximum value. So you don't have to worry about sudden signal peaks causing distortion or noise caused by too low a recording level!

You may de-activate the Peak mode by pressing the PLAY, STOP or OPEN button.

The FADE mode

With the Fade mode you can fade-out a track (slowly decrease the level to 0), create a longer space between two tracks and fade-in a track. During Play mode (with the correct track and at the correct moment!) press the PEAK button. The display will show sequentially (this will take some 5 seconds):

» FADE ? «

» FADE ? «

» FADE ? «

At the same time the signal level is slowly reduced to 0 (fade-out) and the Pause mode is selected. The display shows the PAUSE indication (left), the track number and the time at which the track has been halted.

To resume playback you have two options:

1. Pressing the PEAK button resumes playback and the display will show (this takes some 5 seconds):

» FADE ? «

» FADE ? «

» FADE ? «

At the same time the signal level is slowly increased from 0 to the previous level (fade-in).

2. Pressing the PAUSE or PLAY button will extinguish the PAUSE indication and the track will resume playback, only now with the level immediately at maximum: there is no fade-in!

The best way to treat a CD

The Myth 9 Mk2 CD player will ensure a uniquely perfect CD reproduction quality. But only when all other links in the audio chain are as perfect. The CD is a sturdy medium and can take a lot of bad handling without serious damage. However, it is still important to handle the CD with care. A scratch or blob will not cause an immediate audible problem thanks to the digital error correction of the player. However, every time the correction circuits have to correct something this will have influence on the maximum obtainable audio quality. The following tips will help you to keep the CD's in pristine condition.

Removing it from the box

Place the box on a table (or hold it in one hand). To open the box: grab the sides of the cover (at the position of the two 'half moons') with the thumb and middle finger (of the other hand). Then press with the index finger of the same hand on the mid-point of the cover. You now can pull the sides up and thus open the 'latches' which hold the cover.

Grab the rim of the CD with the thumb and middle finger (at the open spaces in the box), with your index finger depress the clamp in the centre and you can easily remove the CD.

Hold the CD between thumb and middle finger and immediately place it in the tray of the CD player.

To remove the CD from the player use the same method but in reverse. With a slight push you can fix the CD in the box under the clamp.

Never place CD's anywhere unprotected but transfer it straight from the player to their proper box.

Never touch the shiny side with your fingers. Every fingerprint will force the error correction to work even harder.

Cleaning

If you always handle CD's as described above, there will really be no need to clean them. However if you do have 'dirty' CD's clean them as follows.

Use a very soft cloth and slightly rub from the centre hole to the rim in straight lines while now and again breathing on the CD surface.

Never use a circular rubbing motion (like polishing a table or a car): this will damage the CD beyond repair!

Storing

A CD should always be stored in its original box (just like vinyl records). The normal environment in the home will not pose any danger. However, you should not place the CD in extreme heat, moisture and direct sunlight.

7. CARE AND MAINTENANCE

Clean the exterior with a soft, lint-free, anti-static cloth. Do not use force while wiping the surface. To remove difficult stains use a few drops of detergent on a moist cloth, sweep carefully and wipe dry afterwards.

If some scratching occurs, please consult your Sphinx dealer first. He can give you advice about possible solutions.

Do not use polishing or cleaning agents: they may damage the sensitive acrylic finish.

Do not use aerosol cleaning agents.

Most contain solvents, which might react with and damage the acrylic finish.

8. TECHNICAL SPECIFICATIONS

Transport D/A converter	Philips CDM-12.4 Burr-Brown PCM-1716 24 bit, 96 kHz precision DAC Completely independent for each channel
Bandwidth	0 - 20,000 Hz (+0/-0.2 dB)
Phase response error	<0.3°
THD+N (IHF-A)	<0.004% (2 nd harm., 10 – 20,000 Hz)
IMD	<0.01%
S/N ratio (IHF-A)	>106 dB
Channel separation	>70 dB
Output section	Class A, discrete throughout
Outputs	2x cinch (gold-plated), digital out
Impedance	<10 ?
Sphinx Control	1x optical IN, 1x optical OUT
Remote Control	Sphinx dedicated CD player remote control
Power supply	Internal, completely separate sections for digital and analogue with integrated power line suppression filter
Supply capacitance	18,800 µF total
Power consumption	11 W (9 W stand-by)
Dimensions (h x w x d)	75 x 434 x 330 mm
Weight	7 kg

This unit conforms to the EMC interference regulations issued by the EU and to the CE standards.

This unit complies with safety regulation VDE 0860 and therefore with international safety regulation IEC 65.

Technical specifications may be changed by SPHINX without prior notice if technical developments make this necessary.

© 2002 Sphinxlab, Netherlands
www.sphinxlab.nl