

Toad Data Modeler 3.4.15 Installation Guide

Open and unzip the installation package that contains:

- Setup.MSI file,
- ReleaseNotes.htm file,
- InstallationGuide.pdf file.

Select an installation method from the content below and get the appropriate installation instructions.

Content:

- [First Installation](#) of Toad Data Modeler (clean install)
- [Upgrade](#) (installation of the new version to the same directory, unistall of previous version is not necessary)
- [Side-by-Side Installation](#) (installation of the new version to another directory)
- [Re-Installation](#) of Toad Data Modeler 3.4.15
- [Silent Installation](#)
- [Toad Data Modeler Trial Version](#) Information
- [Default Locations](#) of Toad Data Modeler 3.4.15
- [System Requirements](#)

Important Notes:

1. Toad Data Modeler must be installed to a non-unicode named folder. If a unicode character is found in folder name, License Key will not be recognized properly. It is recommended to install the application to default folder: Program Files/Quest Software/Toad Data Modeler 3.
2. If you have installed any version of Toad Data Modeler (TDM) using the TDM stand alone installer and run any of the Toad bundles that contain Toad Data Modeler, the Quest Installer will display incorrectly that Toad Data Modeler has not been installed.
3. Installing Features for Toad Data Modeler: During the initial installation of Toad Data Modeler you have the option to install support for the various database platforms, using the new 'Features' functionality within the Quest Installer (QI). If you want to add new features (after TDM is already installed), you must do so from the Control Panel via the Add or Remove Programs section in your operating system.
4. To install Toad Data Modeler successfully, Administrator privileges are necessary.
5. Toad Data Modeler 3.4.x supports side-by-side installation.
[Upgrade](#) – New version of Toad Data Modeler is installed to the same folder where previous version was installed.
[Side-by-side Installation](#) - New version of Toad Data Modeler is installed to another location.
6. **Limitations of trial version:** 15 - day trial period and multiple features limited to a maximum of 25 entities. Details [here](#).

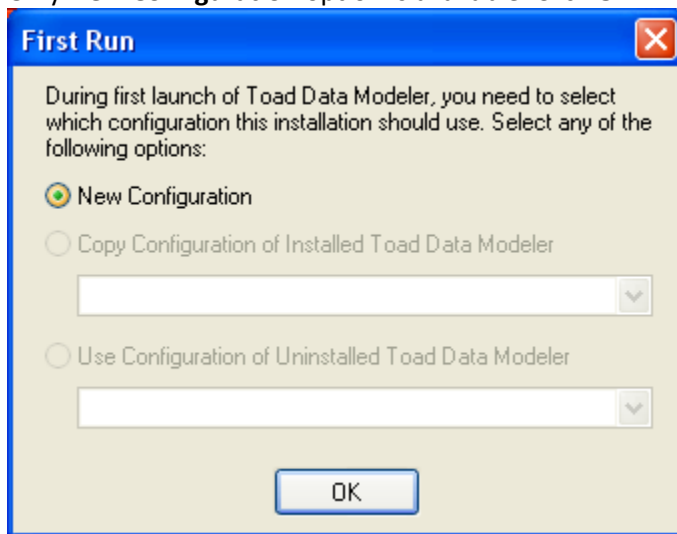
7. Do NOT open and resave models originally created in developmentally higher version of Toad Data Modeler (e.g. in v. 3.4.15) in lower version of Toad Data Modeler (e.g. in v. 3.3.8).
8. Toad Data Modeler 3 was successfully tested on Citrix. However, due to various settings options that are possible, the Citrix support is not officially declared.
9. Note for users of Toad Data Modeler BETA: BETA uses different folders for configuration files and other default directories than Toad Data Modeler Commercial version. You can install and use both versions on one computer.

First Installation of Toad Data Modeler (Clean Install)

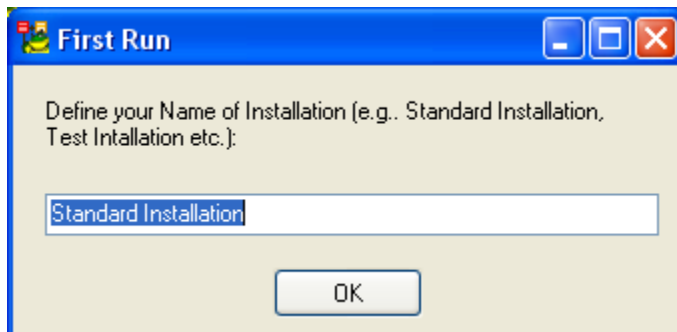
1. Run the Toad Data Modeler Setup Wizard and go through the installation process.
Default path where Toad Data Modeler is installed:
C:\Program Files\Quest Software\Toad Data Modeler 3
2. Select what features (support for various database systems) you want to install.
3. In the end of the installation process, select **Run Toad Data Modeler** and click **Finish**.

Note: The new Toad Data Modeler version allows side-by-side installation. Although this is your first installation of Toad Data Modeler, Toad Data Modeler needs to create a new Installation folder where configuration settings and other files will be saved. Therefore, the following dialog will occur.

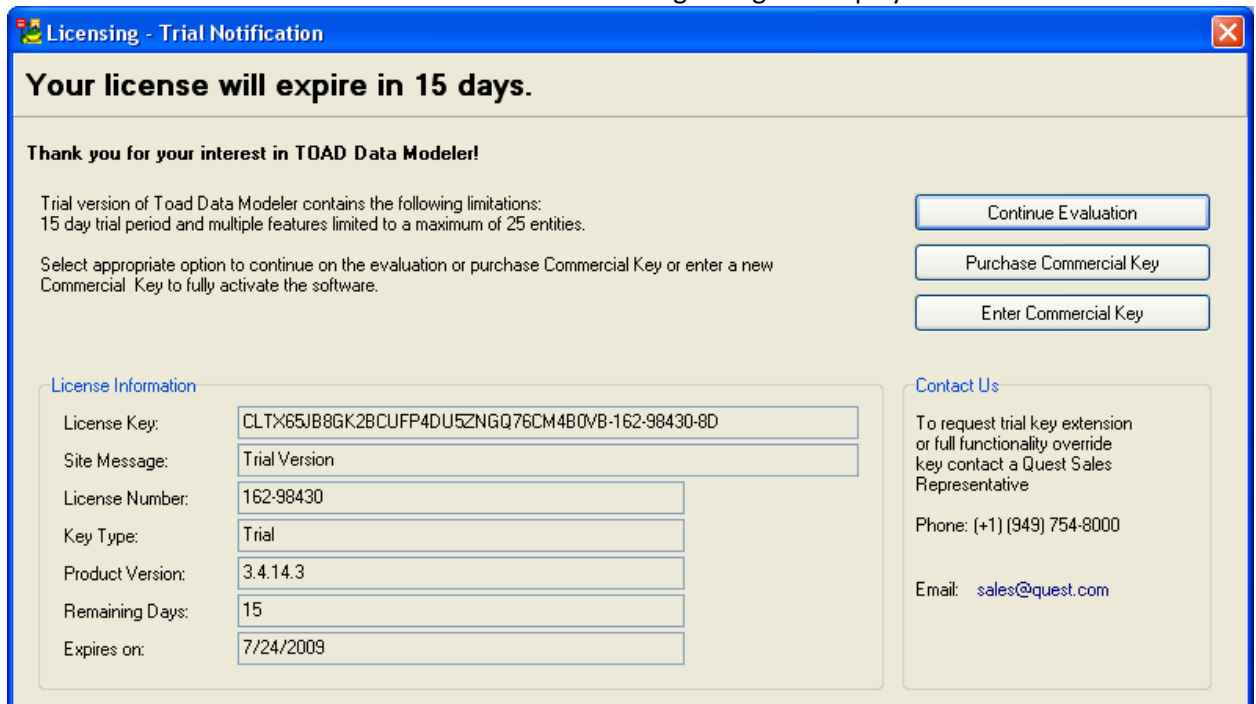
Only **New Configuration** option is available. Click **OK**.



4. Name the Installation folder. *Standard Installation* is a default name. Confirm **OK**.



5. Toad Data Modeler will run in a trial mode. The following dialog will display:



Licensing - Trial Notification

Your license will expire in 15 days.

Thank you for your interest in TOAD Data Modeler!

Trial version of Toad Data Modeler contains the following limitations:
15 day trial period and multiple features limited to a maximum of 25 entities.

Select appropriate option to continue on the evaluation or purchase Commercial Key or enter a new Commercial Key to fully activate the software.

License Information

License Key:	CLTX65JB8GK2BCUFP4DU5ZNGQ76CM4B0VB-162-98430-8D
Site Message:	Trial Version
License Number:	162-98430
Key Type:	Trial
Product Version:	3.4.14.3
Remaining Days:	15
Expires on:	7/24/2009

Contact Us

To request trial key extension or full functionality override key contact a Quest Sales Representative

Phone: (+1) (949) 754-8000

Email: sales@quest.com

Click **Enter Commercial Key** and enter your license key.

More information on Toad Data Modeler Trial version can be found [here](#).

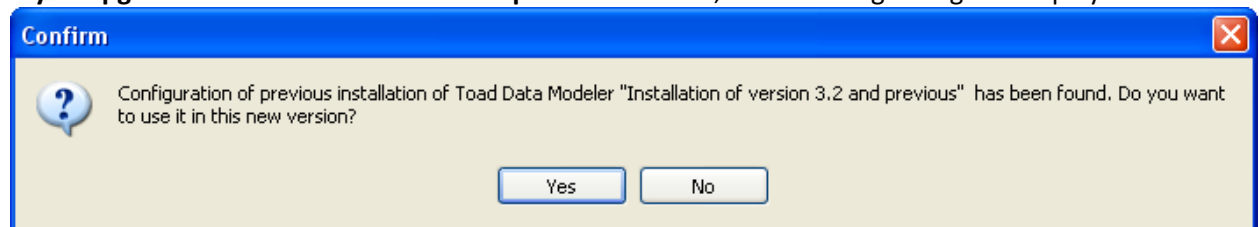
Note: After you install Toad Data Modeler, a new installation folder will be created in your Documents and Settings directory – **Standard Installation**. More information on this folder is available in the [Default Locations](#) topic.

Upgrade

If you select this installation method, it means that:

- You had Toad Data Modeler installed on your computer (v. 3.3.x or previous) and uninstalled it before the new version installation.
OR
You did not uninstall previous version and still have Toad Data Modeler (v. 3.3.x or previous) installed on your computer.
 - You install the new version to **the same location** where the previous version is.
1. Run the Toad Data Modeler Setup Wizard and go through the installation process.
Default path where Toad Data Modeler is installed:
C:\Program Files\Quest Software\Toad Data Modeler 3
 2. Select what features (support for various database systems) you want to install.
 3. In the end of the installation process, select **Run Toad Data Modeler** and click **Finish**.

If you upgrade Toad Data Modeler 3.2 or previous version, the following dialog will display:

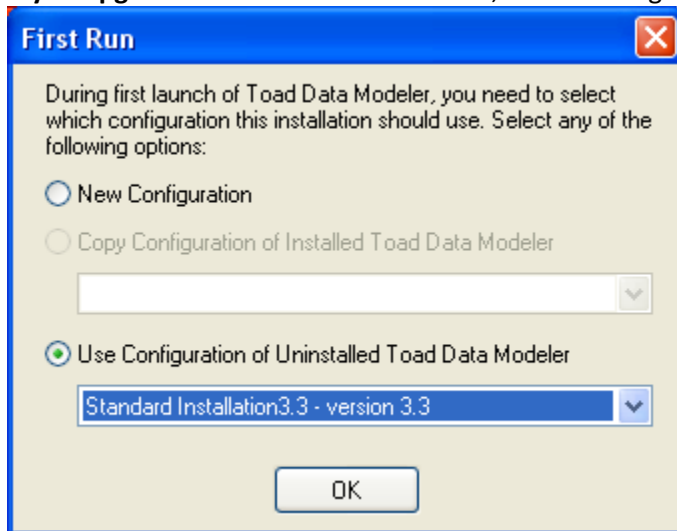


Explanation: Toad Data Modeler allows side-by-side installation. You store your configuration settings of the previous Toad Data Modeler version in your Documents and Settings directory. Now you are asked whether you want to preserve them or not.

A: Press **Yes** to copy your configuration settings and Version Manager files of previous Toad Data Modeler version to the new version.
(TDM will create a new folder **Installation #** in your Documents and Settings directory where these files will be stored - C:\Documents and Settings\user name\Application Data\Quest Software\Toad Data Modeler\Installation #.)

B: Press **No** to use default configuration settings and Version Manager files of the new Toad Data Modeler version.
(Note: In this case, Version Manager files (projects you created in previous version of Toad Data Modeler) will not be copied to the Installation # folder for the new version.)

If you upgrade Toad Data Modeler 3.3.x, the following dialog will display:



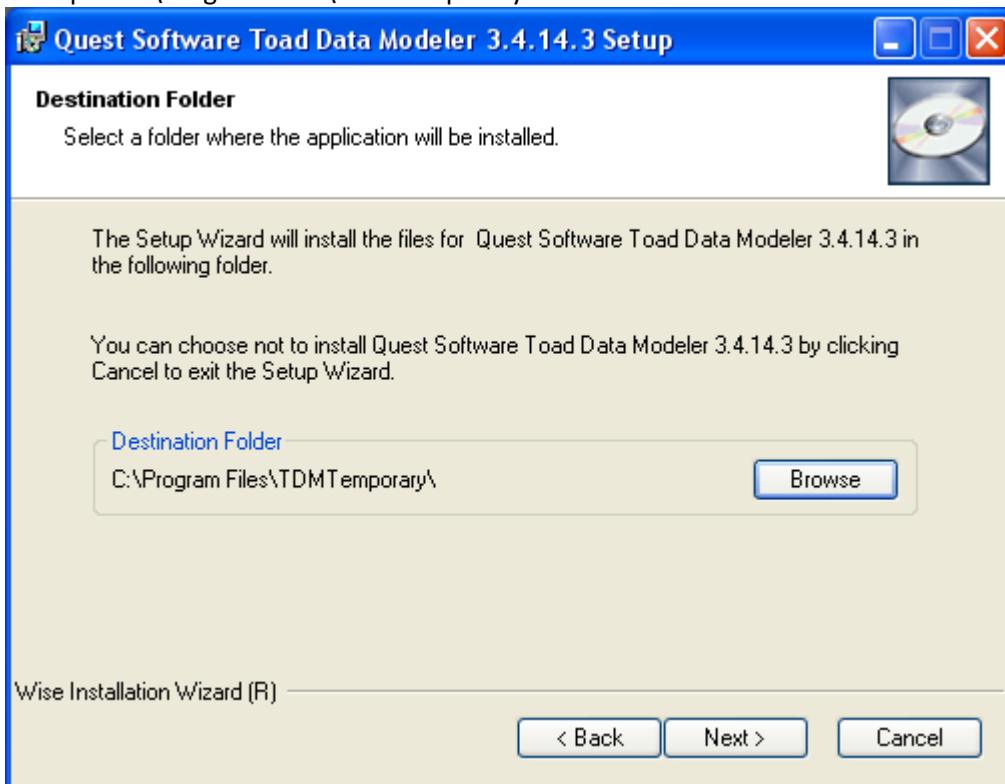
Explanation: Toad Data Modeler allows side-by-side installation. You store your configuration settings of Toad Data Modeler 3.3.x in your Documents and Settings directory. Now you are asked whether you want to use them or define new configuration settings.

In both cases, a new folder **Installation <name>** is created by default at:
C:\Documents and Settings\user name\My Documents\Toad Data Modeler
More details on this folder are available in the [Default Locations](#) topic.

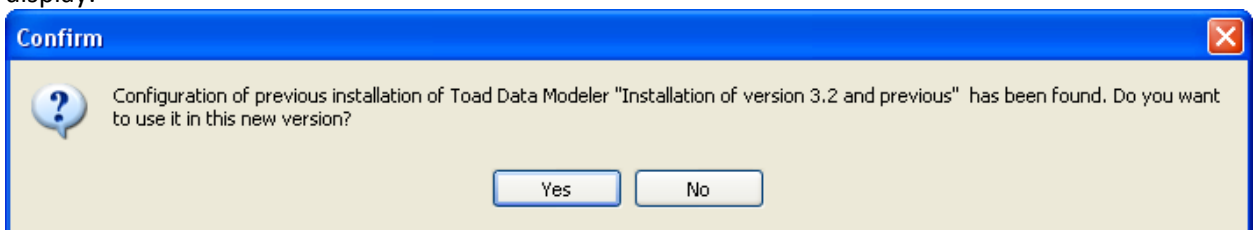
Side-by-Side Installation

If you select this installation method, it means that:

- You already have Toad Data Modeler installed on your computer (v. 3.3.x or previous). You do not uninstall this old version.
 - You install the new version to a **new location**.
1. Run the Toad Data Modeler Setup Wizard and go through the installation process. Change the default path and define a new path where Toad Data Modeler will be installed:
Example: C:\Program Files\TDMTemporary



2. Continue the installation process and select what features (support for various database systems) you want to install.
3. In the end of the installation process, select **Run Toad Data Modeler** and click **Finish**.
If you have Toad Data Modeler 3.2 or previous version installed, the following dialog will display:



Explanation: The application will be executed from the new location for the first time. You need to select what configuration settings should be used.

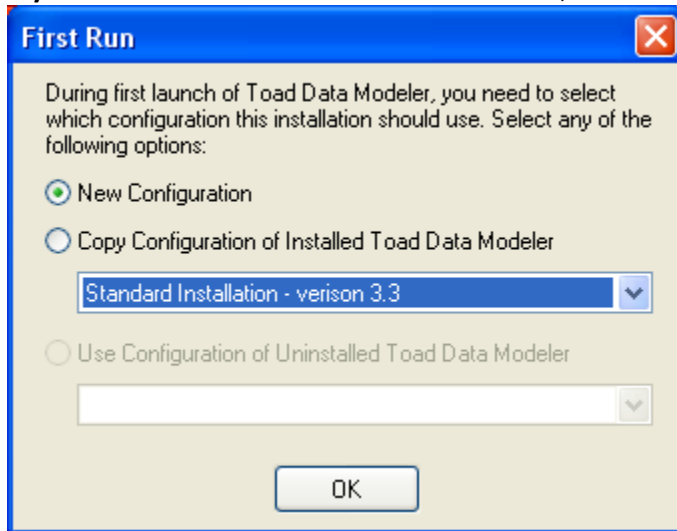
A: Press **Yes** to copy your configuration settings and Version Manager files of previous Toad Data Modeler version (v. 3.2.x or previous) to the new version.

(TDM will create a new folder **Installation #** in your Documents and Settings directory where these files will be stored - C:\Documents and Settings\user name\Application Data\Quest Software\Toad Data Modeler\Installation #.)

B: Press **No** to use default configuration settings and Version Manager files of the new Toad Data Modeler version.

(Note: In this case, Version Manager files (projects you created in previous version of Toad Data Modeler) will not be copied to the Installation # folder for the new version.)

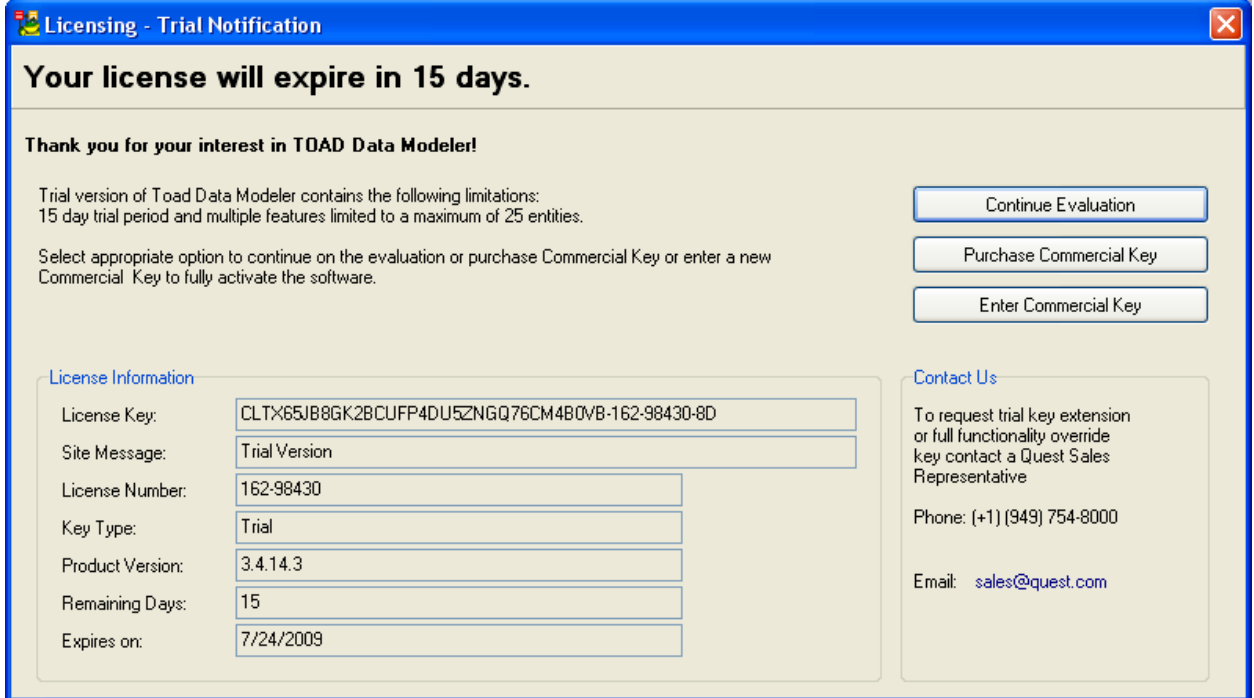
If you have Toad Data Modeler 3.3.x installed, the following dialog will display:



Explanation: The application will be executed from the new location for the first time. You need to select if you want to use the configuration settings of version 3.3 or if you want to define new configuration settings.

In both cases, a new folder **Installation <name>** is created by default at:
C:\Documents and Settings\user name\My Documents\Toad Data Modeler

- Then the new Toad Data Modeler version will open in a trial mode. The following dialog will display:



Licensing - Trial Notification

Your license will expire in 15 days.

Thank you for your interest in TOAD Data Modeler!

Trial version of Toad Data Modeler contains the following limitations:
15 day trial period and multiple features limited to a maximum of 25 entities.

Select appropriate option to continue on the evaluation or purchase Commercial Key or enter a new Commercial Key to fully activate the software.

[Continue Evaluation](#)

[Purchase Commercial Key](#)

[Enter Commercial Key](#)

License Information

License Key:

Site Message:

License Number:

Key Type:

Product Version:

Remaining Days:

Expires on:

Contact Us

To request trial key extension or full functionality override key contact a Quest Sales Representative

Phone: (+1) (949) 754-8000

Email: sales@quest.com

- If you are a holder of a permanent license key, click **Enter Commercial Key** and enter your license key information from previous Toad Data Modeler version (see e.g. the **Help** menu | **Licensing**).

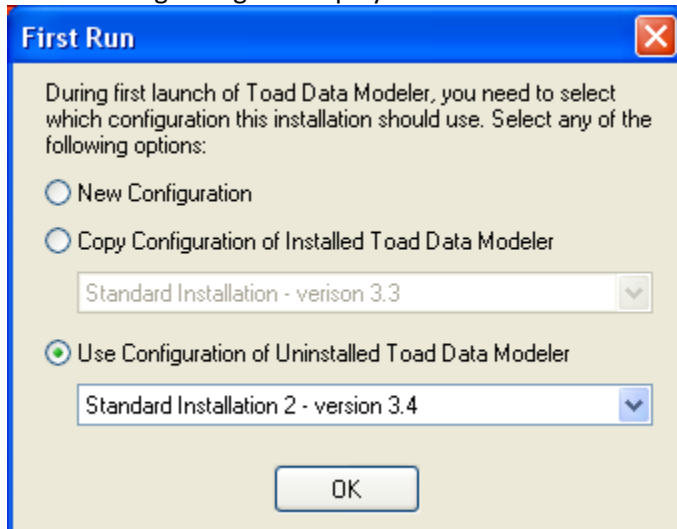
Note: You will not have to enter your commercial key again if you use Vista OS.

Re-Installation of Toad Data Modeler 3.4.15

Sample Situation:

- You have these Toad Data Modeler versions on your computer:
 - Toad Data Modeler 3.3.x or previous version
 - Toad Data Modeler 3.4.15
 - You need to reinstall Toad Data Modeler 3.4.15 for any reason.
 - You will uninstall Toad Data Modeler 3.4.15 first, then you will install it to **the same location**.
1. Uninstall Toad Data Modeler 3.4.15.
 2. Run the Toad Data Modeler Setup Wizard and go through the installation. Install it to the same location.
Example: C:\Program Files\TDMTemporary
 3. Select what features (support for various database systems) you want to install.
 4. In the end of the installation process, select **Run Toad Data Modeler** and click **Finish**.

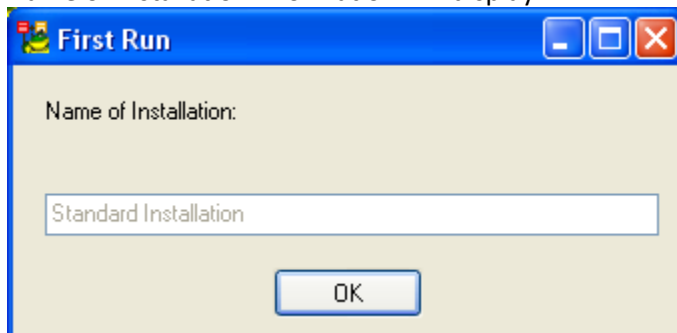
The following dialog will display:



Explanation: You are asked what configuration and Version Manager files should be used for this version – whether those of Toad Data Modeler 3.3.x or those of uninstalled Toad Data Modeler 3.4.15 version.

In this example, files of Toad Data Modeler 3.4.x will be used.

5. Press **OK**.
6. Name of Installation information will display.



7. Confirm **OK**.

Silent Installation of Toad Data Modeler

To perform a silent installation of Toad Data Modeler, you must have the setup.MSI file for Toad Data Modeler. This MSI is then used with the installation variable to define the installation options.

The argument for the silent installation from a command line is `"/q"`. To specify a directory where Toad Data Modeler should be installed, it is possible to use `INSTALLDIR="PATH"`. (Otherwise, the default path will be used.)

Example:

```
setup.msi /q INSTALLDIR="C:\Program Files\Quest Software\Toad Data Modeler 3\"
```

In order to specify for which database platform Toad Data Modeler should be installed or which shortcuts should be created and where, use the parameter `ADDLOCAL`. If this parameter is not used, default installation will be performed.

Example:

```
setup.msi /q INSTALLDIR="C:\Program Files\Quest Software\Toad Data Modeler 3\"  
ADDLOCAL=Complete,XPMANIFEST,SUPPORTDATABASES,SHORTCUTUNINSTALL,SHORTCUTDE  
SKTOP,SHORTCUTSTARTMENU,SHORTCUTQUICKLAUNCH,SHORTCUTHELP,POSTGRESQL,POS  
TGRESQL81,POSTGRESQL82
```

Provided you use the parameter `ADDLOCAL`, always select the options `Complete`, `XPMANIFEST`, `SUPPORTDATABASES`. These three options are obligatory for the correct installation.

During installation of support for particular database platform, it is necessary to install basic support for the selected database platform. Example: For successful installation of support for Oracle 10g database, Oracle must be selected too.

Shortcuts

SHORTCUTUNINSTALL	Creates a shortcut for uninstall in Start Menu.
SHORTCUTDESKTOP	Creates a shortcut for Toad Data Modeler on desktop.
SHORTCUTSTARTMENU	Creates a shortcut for Toad Data Modeler in Start Menu.
SHORTCUTQUICKLAUNCH	Creates a shortcut for Toad Data Modeler in Quick Launch bar.
SHORTCUTHELP	Creates a shortcut for Help file, User Manual and Reference Guide in Start Menu.

Database Platforms

Oracle

ORACLE	Basic support for Oracle
ORACLE_9	Support for Oracle 9i
ORACLE_10G	Support for Oracle 10G
ORACLE_11G	Support for Oracle 11G

MS SQL Server

MSSQL	Basic support for MS SQL Server
MSSQL2000	Support for MS SQL 2000
MSSQL2005	Support for MS SQL 2005
MSSQL2008	Support for MS SQL 2008

MySQL

MYSQL	Basic support for MySQL
MYSQL50	Support for MySQL 5.0
MySQL51	Support for MySQL 5.1

PostgreSQL

POSTGRESQL	Basic support for PostgreSQL
POSTGRESQL81	Support for PostgreSQL 8.1
POSTGRESQL82	Support for PostgreSQL 8.2
POSTGRESQL83	Support for PostgreSQL 8.3

Sybase ASE

SYBASE	Basic support for Sybase ASE
SYBASE12.5	Support for Sybase ASE 12.5
SYBASE15	Support for Sybase ASE 15

DB2 (LUW)

DB2	Basic support for DB2 (LUW)
DB2UDBv8	Support for DB2 UDB 8 (LUW)
DB2v9	Support for DB2 9 (LUW)
DB2v95	Support for DB2 9.5 (LUW)

MS Access

MSACCESS	Basic support for MS Access
MSACCESS_2000_2003	Support for MS Access 2000/2002/2003

Other parameters for silent installs can be found after you set the “setup.msi ?” command.

Toad Data Modeler Trial Version

Limitations of Trial Version

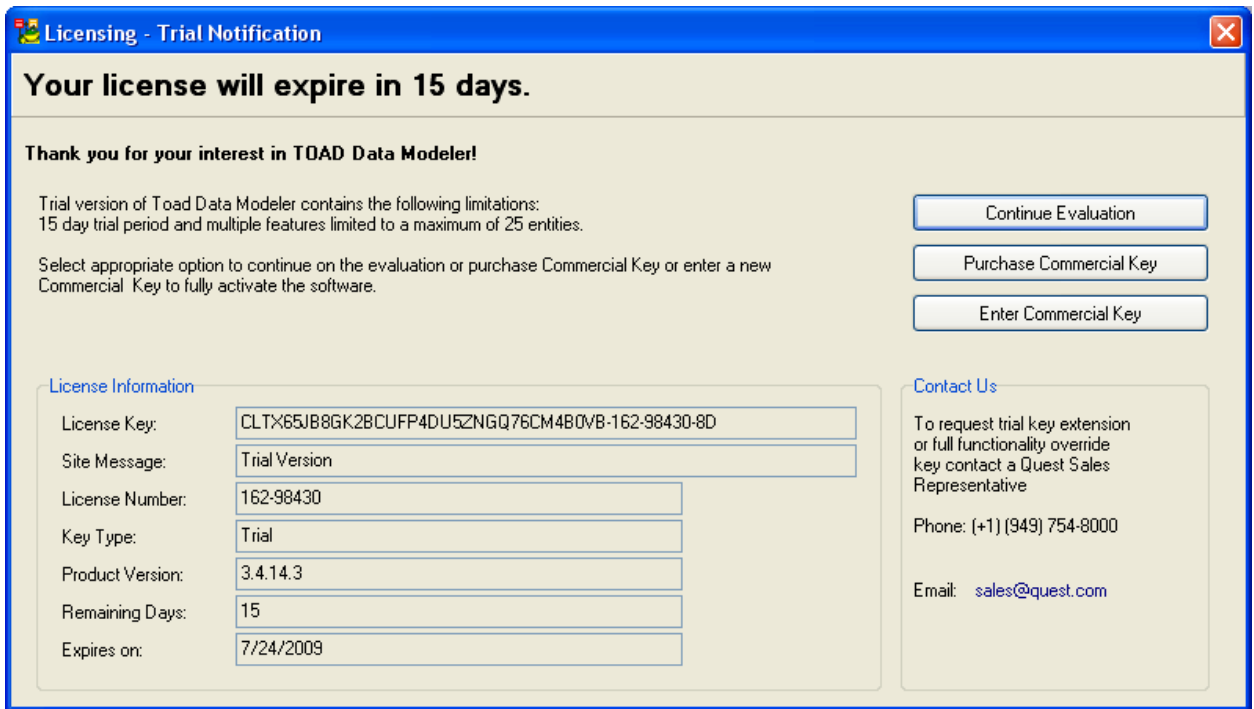
- **15 – day trial period,**
- **25 – entity limit** for the following functionalities (the restrictions relate to both physical and logical models):
 - **Save Model** – You are not allowed to save a model with more than 25 entities. If you want to save your entire model, you can contact your Quest Sales Representative at sales@quest.com to request a full functionality trial override key.
 - **Print** – You are not allowed to print a model with more than 25 entities. If you want to print your entire model, you can contact your Quest Sales Representative at sales@quest.com to request a full functionality trial override key.
 - **Export to Graphic File** – You are not allowed to export to graphic file a model with more than 25 entities. If you want to export your entire model to graphic file, you can contact your Quest Sales Representative at sales@quest.com to request a full functionality trial override key.
 - **Alter Report** – You are not allowed to generate alter report for a model with more than 25 entities. If you want to generate alter report for your entire model, you can contact your Quest Sales Representative at sales@quest.com to request a full functionality trial override key.
 - **Report** – You are allowed to generate HTML/RTF/PDF report only for first 25 entities of the model. Other objects (procedures, functions etc.) don't have any limitation.
 - **XSL Transformation Report** – You are allowed to generate the XSL Transformation report only for first 25 entities of the model. Other objects (procedures, functions etc.) don't have any limitation.
 - **SQL/DDI Script Generation** – You are allowed to generate SQL/DDI script only for first 25 entities of the model. Other objects (procedures, functions etc.) don't have any limitation.

Dialogs in Trial Version

1. First run of Toad Data Modeler
Toad Data Modeler will open in a trial mode. Trial period is 15 days. During this time, you can evaluate the software.

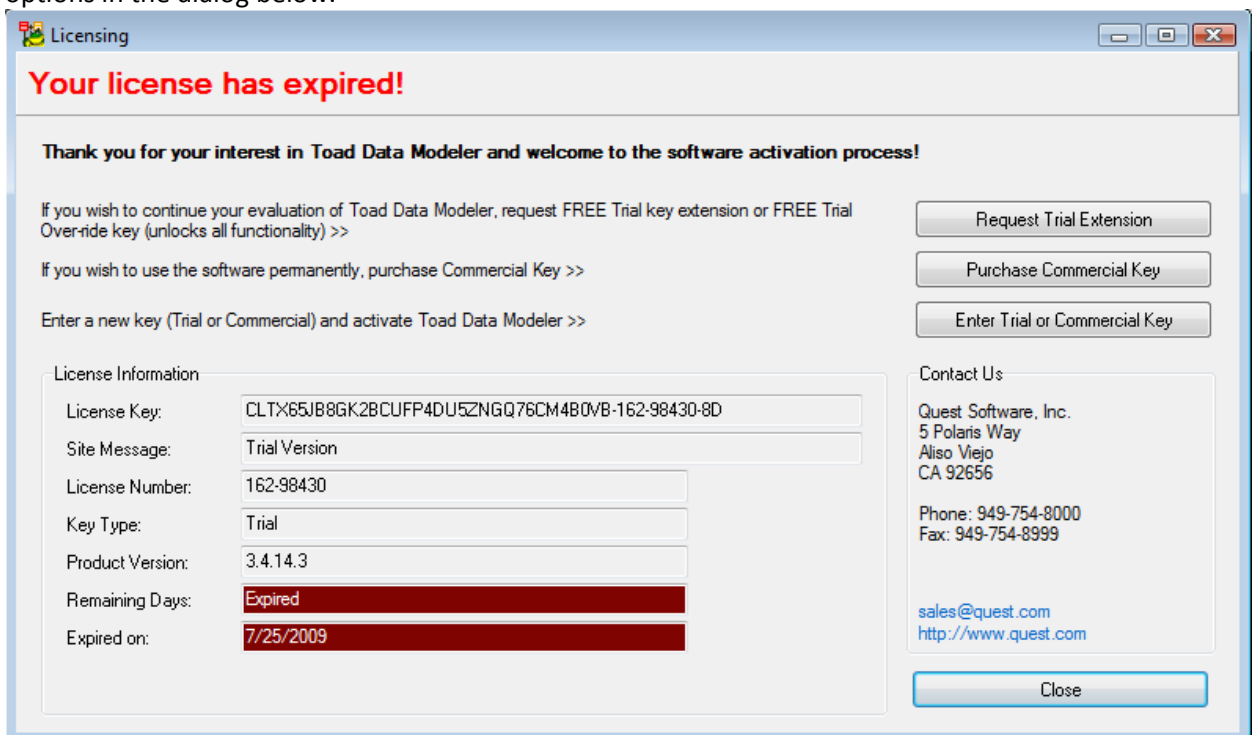
Click **Continue Evaluation** to open the Toad Data Modeler Trial version.
Click **Purchase Commercial Key** to be directed to the Quest Software website.
Click **Enter Commercial Key** to enter your license key.

(See the screenshot below.)



2. 15-day trial period has expired.

You can either purchase a commercial key or request a trial extension. See the information and options in the dialog below.



Default Locations of Toad Data Modeler 3.4.15

As Toad Data Modeler 3.4.15 supports side-by-side installation, there are two folders:

Installation #

- Default path: C:\Documents and Settings\user name\Application Data\Quest Software\Toad Data Modeler\Installation #.
- The number of installation is increasing with every new installation.
- In this folder, configuration files and Version Manager files are stored.

Standard Installation (or <name> installation that you define)

- Default path: C:\Documents and Settings\user name\My Documents\Toad Data Modeler\Standard Installation
- In this folder, aliases, models, naming conventions, user packages, user OTPs, styles and XSL files are stored.

In this location: C:\Documents and Settings\user name\My Documents\Toad Data Modeler, there are only GeneratedScripts, Logs and Reports folders (folders for outputs) and the new Standard Installation folder where user's files are stored.

1. After Toad Data Modeler 3.4.15 is installed

Toad Data Modeler 3.4.15 application is installed to:

C:\Program Files\Quest Software\Toad Data Modeler 3

Here, the following directories can be found:

BIN

In this directory, particularly the *TDM.exe* and *Support.xml* file containing list of supported database systems are stored. Libraries for reverse engineering of particular databases (*.dll files) are stored here too.

Configs

Config files with default settings and default layout of Toad Data Modeler are stored here (TDM.txe and .txd files).

Documents

Directory with documentation to Toad Data Modeler – User Guide, Help file, Reference Guide, License Agreement and Third Party License.

Naming Conventions

Directory with .csv files that can be imported and used in glossaries for naming conventions in Toad Data Modeler.

Packages

System packages and metamodels are stored in **System** subdirectory. Default *My Package* is stored in **User** subdirectory.

Samples

Directory with sample Toad Data Modeler models.

Selected OTPs

Directory with .txo files for each supported database platform and logical model, containing Default (System) Selected Object Types and Properties.

Styles

Default CSS styles for report generation.

Version Manager

Definitional files for Version Manager.

XSL

Directory with .xslt files - templates for XSL transformation.

Release Notes document

Document with information on the product release.

2. After you run Toad Data Modeler 3.4.15

After you run the application, new directories will be created in your **Documents and Settings** directory. The files that you can modify will be copied to these directories. (From *C:\Program Files\Quest Software\Toad Data Modeler 3*).

All changes you make in the files (e.g. changes in the application layout, new aliases, modified styles in reports, new default path to generated SQL/DDl code, modified *My Package.tgx* file etc.) will be saved in your **Documents and Settings** directory and will be preserved when you update the application.

If you need to restore the original default settings, you can simply delete appropriate file in the **Documents and Settings** directory. When you run Toad Data Modeler then, appropriate original default file from *C:\Program Files\Quest Software\Toad Data Modeler 3* will be copied to the Documents and Settings directory again.

You will find the 'user' files in the following locations:

- **C:\Documents and Settings\user name\Application Data\Quest Software\Toad Data Modeler\Installation #**
 - Here, Configs and Version Manager directories can be found.
Note: The number of installation will be increasing with every new installation.

Configs

Config files with settings of Toad Data Modeler and *TDM.txe* file with the application environment (layout) are stored here.

Version Manager

Structure that you create in Version Manager is saved here.

- **C:\Documents and Settings\user name\My Documents\Toad Data Modeler\Installation name**
 - Here, the following directories are created:

Aliases

Aliases you create and save during reverse engineering.

Models

Default path for physical and logical models you create in Toad Data Modeler.

Naming Conventions

Directory with naming convention definitions (.*txn* files) that you create in Toad Data Modeler.

Packages

Directory with metamodels and packages (.*txg* files). User packages - *My Package* and add-ons are stored here.

Selected OTPs

Directory with User Selected Object Types and Properties.

Styles

Default path to CSS styles for reports.

XSL

Directory where user .xslt files for XSL transformation are stored.

- **C:\Documents and Settings\user name\My Documents\Toad Data Modeler**
 - Here, the following directories are created:

Generated Scripts

Directory where DDL/SQL script and alter scripts are generated.

Reports

Directory where HTML, RTF reports, PDF and XSLT outputs are generated.

System Requirements

	Minimal Requirements	Optimal
Platform	Pentium IV	Pentium dual core
Memory	256 MB	1 GB
Hard Disk Space	100 MB	200 MB
Operating System	Microsoft Windows 2000 Professional Edition (Service Pack 4) Microsoft Windows XP 32-bit Microsoft Windows XP 64-bit Microsoft Windows Vista 32-bit Microsoft Windows Vista 64-bit	Microsoft Windows 2000 Professional Edition (Service Pack 4) Microsoft Windows XP 32-bit Microsoft Windows XP 64-bit Microsoft Windows Vista 32-bit Microsoft Windows Vista 64-bit