



# **WX** *electric*



---

## INSTRUKCJA OBSŁUGI

---

OWNER MANUAL

---

---

---

---

---

OPRYSKIWACZ WÓZKOWY  
AKUMULATOROWY

BATTERY CART SPRAYER

BATTERIESPRITZE

O PULVERIZADOR DE BATERIA  
DE RODAS

АККУМУЛЯТОРНЫЙ  
ОПРЫСКИВАТЕЛЬ НА КОЛЕСАХ

PL

GB

DE

PT

RU

# Table of Contents

Application of the sprayer .....	16
Standard equipment .....	16
Charging the battery .....	16
Preparation for work and precautions .....	17
Preparing for work .....	17
Sprayer's operation .....	17
Usage recommendations .....	17
Equipment maintenance .....	18
General Comments .....	18
Safety Information .....	19
Technical information and symbols of the elements .....	20
Construction and maintenance of APS telescopic lance .....	21
Construction and maintenance of the feeding valve integrated with handle .....	21
The control panel .....	22
Troubleshooting .....	22-23
Removal and Disposal .....	23
Terms of repairs and guarantees .....	24
List of schema elements .....	25

GB

Thank You for buying our sprayer.

Before using the sprayer, this manual should be read carefully and kept for future reference.

To ensure long-term operation of the device, the safety, operation and maintenance recommendations enclosed in the manual should be strictly observed.

# Application of the sprayer

Battery sprayer trolley V) is designed for spraying pesticides and liquid fertilizers in gardens, orchards, parks, forests, nurseries and greenhouses.

## Standard equipment

Each packing of the Sprayer V) contains:

Complete sprayer with the wheels, pump, battery 7,2Ah

Hose 250cm with the feeding valve integrated with the handle R020j

Telescopic lance with adjustable nozzle MR1.5 Ø1.5mm, spraying angle 45

Battery charger

Funnel with a sieve

Regulated cone nozzle MR1.0 Ø1.0mm, spraying angle 45

Flatstream nozzle (for herbicides) MF3,110, Ø 3mm, spraying angle 110

Seals, a vial of silicone lubricant and other parts

User manual and warranty card

GB

## Charging the battery

To charge the battery, plug in the enclosed charger to the charging socket on the control panel and then connect with the power supply of 230V 50Hz. (Site: 22)

The battery is fully charged when all LED charge indicators are illuminated as well as the control 100%.

If the battery has a low charge level, and the LEDs indicators light only in red, it's necessary to charge the battery before further work.

**The battery should be charged only when the sprayer is switched off!**

Charging the battery should be finished only when the battery is fully charged.

At least every three months the battery charge level should be checked and if necessary the battery should be recharged in order not to allow to its total discharge which can cause damage.

# Preparing and operating instructions

## Preparing for work

- Remove the sprayer from the carton
- Connect the lance with the feeding valve integrated with handle R020j
- Open the cap RP11 and fill in the sprayer with clean water to check the operation of the device
- Switch on the button on the control panel and press the trigger on the handle.
- If the sprayer works and the battery is sufficiently charged for work then we can start preparing for spraying
- The charge level is displayed on the control panel
- In a separate container prepare a liquid according to the recommendations on the packing of the pesticide
- Pour the liquid into a container using the sieve with funnel RP22

## ■ Sprayer's operation

- **Start the sprayer button on the control panel**
- **Holding the handle of the lance, press the trigger button and start spraying.**
- **During operation, the pump will automatically maintain a constant pressure**
- **If the battery gets discharged during work, the user will be warned about it by a light signal and sound alert**
- **After finishing the spraying, rinse the sprayer using clean water. In order to do it, pour some clean water into the container, start the sprayer and spray until the device stops to suck liquid from the tank and will suck some air. Then You should turn off the sprayer and completely empty the tank of the liquid.**

**NOTE ! After finishing all operations, make sure that the battery is sufficiently charged to store (store the sprayer with a charged battery), and the sprayer was turned off using the button on the control panel.**

## Usage recommendations

- Do not store the sprayer in sunlight or in temperatures below +4°C.
- It is not recommended to fill in the tank above the working capacity.
- During operation, do not put the sprayer on one side, because instead of liquid the air can be sucked.
- If you observed increased resistance in the feeding valve, lubricate the seals with silicone lubricant or they can get damaged.
- When working with plant protection chemicals, it is necessary to comply with safety rules, and strictly follow the instructions on the packaging of chemicals.
- If you leave some liquid in the lance during winter, expanding ice may damage the valve and the handle.

# Equipment Maintenance

After finishing work, cleaning the sprayer and blowing air through it, you should:

- Unscrew hose connected to the handle, remove R40 filter, and clean it (preferably under running water).
- Unscrew the bottom nut R50 from the feeding valve - R020j, remove the valve piston with a spring, clean it, lubricate with silicon lubricant, put it back into the valve and screw in the nut tight.
- Unscrew the yellow nozzle cap R115, then unscrew the black nozzle nut R64, take out the nozzle core, wash it, lubricate the O-ring on the core and reassemble it again.
- Unscrew the cap of the tank RP11, take out the funnel RP22, take out the diaphragm tank cap R322 without removing it from the hose, then take out the o-ring and wash or exchange the filter. When it's done, put the filter and the o-ring back into the cap R322. Then put the diaphragm tank cap R322 inside the tank. When placed in a tank, make sure that the cap touches the bottom of the tank.

## Note!

**All repairs, replacements or maintenance of the pump, battery or control panel can be done only in the Marolex premises or by authorized services.**

**Repairing, replacing or maintenance of the elements mentioned above on their own results in loss of warranty.**

GB

## General Comments

In the lance's handle there's a filter (R40) installed, designed to protect nozzles from clogging. All Marolex lances are interchangeable (the same thread in all of them). It is possible to use additional extensions (60 and 100 cm) produced by Marolex. With MAROLEX sprayers a wide range of nozzles can be used: cone-shaped, deflecting, flatstream, with adjustable stream angle and with different output. The construction of Marolex lances allows the use of nozzles produced also by other manufacturers.

# Safety Information

Children, pregnant women, people taking drugs or drinking alcohol should not operate the sprayer. The operation of the sprayer should be tested with clean water first.

**When working with plant protection chemicals (including preparation of the formula and utilization of the packaging), it is necessary to use special protective clothing: rubber boots, gloves, coat, cap, goggles, mask or respirator.**

It's forbidden to work on an empty stomach and eat, drink or smoke while spraying. The alcohol shouldn't be drunk before or just after spraying.

Residual liquid must not be released into the open water or biological waste water treatment plant. Observe the applicable Ordinance of the Minister of Agriculture and Rural Development of 24 June 2002 on hygiene and safety when working with plant protection chemicals. These comments also apply to rinsing the tank and other elements of the sprayer.

The used sprayer should be utilized in chemical waste plant.

In case of poisoning, contact your doctor immediately.

Prepare spraying liquid in a special container strictly following rules given by its manufacturer.

It's forbidden to operate the sprayer, if there are any damages or leakages.

Repairs must be done when the sprayer is decompressed and not contaminated.

Thoroughly wash sprayer after each use and before service.

Do not use the sprayer for other purposes than those specified in the manual.

The sprayer must be stored empty without any liquid in the container or lance.



**The only device for making pressure in the container is the sprayer's pump. It's forbidden to use any other equipment for this purpose!**

Company Marolex does not allow the use of fluids defined as: explosive, extremely flammable, highly flammable, flammable (in case when the maximum allowable temperature is above flashpoint), very toxic, toxic, oxidising.

Unauthorized changes to the sprayer and using it against its purpose can lead to poisoning of humans and animals, environmental contamination, damage to the sprayer or serious accidents.

After finishing work, change clothes (clean protective clothing), wash your hands and face, rinse the mouth and throat, clean the nose.

After finishing spraying, water down the remaining liquid at least 10 times and spray it on the same area again.

After finishing work, wash the sprayer few times with water, then pour the water out and blow air through it by pumping through it a few times with the feeding valve R020j open.

For the damages caused by not complying to the rules in this manual the user is fully responsible.

Storing of the sprayer filled with a liquid or air under pressure is forbidden.

It's forbidden to block the safety valve as it may cause damages.

After the compression the container must not be hit or dropped.

We recommend that you fill in the tank using our funnel with strainer - built in filter additionally prevents clogging of the nozzles.

During use and storage, the sprayer must be protected against using it by unauthorized persons, especially children.

**Sprayer once used for plant protection chemicals can not be used for other purposes!**

Sign	Description	Location
	Sign indicating possibility of unspecified danger.	On the container
	Sign indicating that a users manual should be read before starting work	On the container
	Warning against poisoning by toxic substances	On the container
	Devices may not be disposed of with household waste, used sprayer should be disposed of through a recycling center	On the container
Pb	The battery used in this product contains lead, the used or damaged battery must be disposed of through a recycling center	On the battery

## Declaration of conformity (DoC)

Marolex Sp. z o.o. declares that the battery sprayer VX is in conformity with the requirements of the Directive: 2006/42/EC and 73/23 EEC



GB

## Technical information and symbols of the elements

Battery sprayer VX	
Total container capacity	22.00 l
Working container capacity	20.00 l
Pump performance	
Maximum working pressure	
Overpressure protection	
Net weight	
Container material	
Battery	
Pump	Diaphragm pump 12V 0.7A
Working mode	Interval operation
Battery charger	AC 100-240V, 50-60 Hz, / DC18V, 15.A

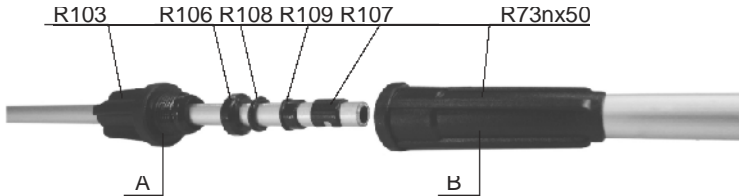
## Construction and maintenance of APS system in telescopic lance

Telescopic lance is a piece of equipment of sprayer VX, with the folded length of 60cm, and after ejection of the inside lance it extends to 108 cm.

To get the correct length of the lance, loosen the sleeve R103, pull out the inside lance "A" to the desired length and then tighten the sleeve so that the lance could not fold again.

Telescopic lance is provided with a special antidust system APS. The system protects the telescopic lance system against contamination.

In order to maintain the system, unscrew the sleeve and take out the inside lance pipe by pulling it out. Lubricate with silicone grease all the elements on the inside lance pipe "A": R106, R107, R108 and R109. When it's done, put back the pipe "A" inside the outer lance pipe "B" and screw in the sleeve.



## Construction and maintenance of the feeding valve integrated with handle

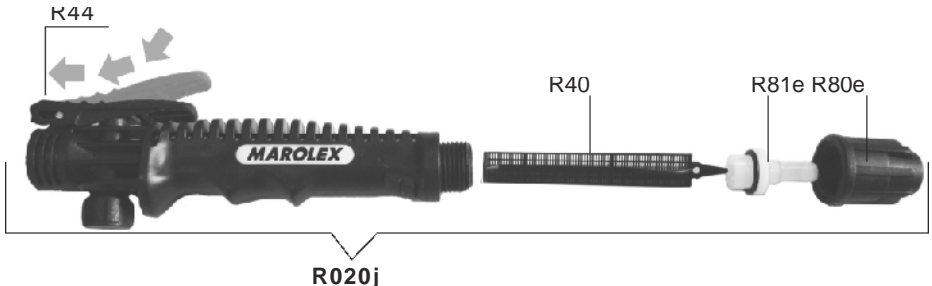
Feeding valve integrated with handle consists of many elements which ensure proper operation of the sprayer. Its main advantages are:

- Ergonomic design fitted to the shape of the hand
- Comfortable to use trigger button
- Additional filter inside the lance giving protection against polluting
- Two systems of work - intermittent and continuous

Two systems of work give us the ability to work:

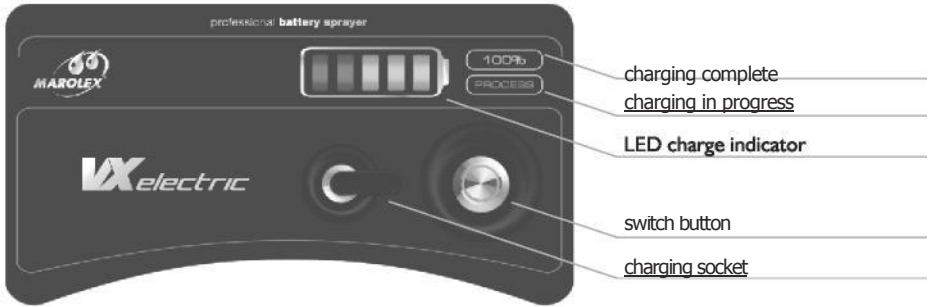
- Intermittent - the possibility of a temporary spray obtained by pressing the trigger button R44. The moment the button is released the spraying stops.
- Continuous - possibility of continuous spraying without necessity of pressing the trigger button R44 during spraying. It is obtained by pressing and moving forward the trigger button R44 till it is blocked. To unblock the button, press it and move backward until the brass element is at the end of the button hole.

Maintenance is described in the section "Equipment maintenance"





## ■ The control panel



## Troubleshooting:

Symptoms:	Reason:	Solution:
Sprayer does not work	Switch button off	Press the switch button on the control panel
	Discharged battery	Charge the battery ("process" on the control panel will show)
Despite charging the sprayer, the control panel does not light up	Charger does not work	Buy new charger
	Defect in control panel	Contact Marorex service
Feeding valve R020j leaking	Loose hose nut R80e or damaged gasket R47c	Tighten the nut or replace the gasket R47c (found in repair kit Z08j or washers kit Z08u)
	Freezing water ruptured handle or valve.	Replace the valve & handle – R020j
	Damaged valves cylinder top gasket (it wasn't lubricated periodically)	Replace the piston with the o-rings (found in kits Z08j and Z08z) or even the entire R020j valve
	Lost seal R47c or unscrewed lance	Insert the seal R47c or screw the
Blocked trigger button R44	Trigger button is in continuous work position	Unblock the trigger button by pressing it and moving backward
	The valve's piston is seized	Replace the valve's piston (included in kits Z08j, Z08z) or replace the entire handle with valve R020j.
Weak spraying action although the pressure in the tank is high	R40 filter dirty	Unscrew the hose, remove the R40 filter and clean it or replace with a new one (found in kits Z08j, Z08b, R40)
	Clogged nozzle in the lance	Unscrew the nozzle cap R115, then the nozzle nut R64, take out the nozzle core R114 and rinse all parts under running water; lubricate the o-ring on the nozzle core and assemble

Symptoms:	Reason:	Solution:
Leaks in the joints of the lance	Lost R47c seal or loose nozzle nut R64	Insert the seal R47c or tighten the nozzle nut
	Unsealed or incomplete system of the telescope lance	Tighten or repair the telescope system in the lance
There's air appearing in the hose or liquid stream is being interrupted	In the pump there is air mixed with a liquid (too little liquid or tilted sprayer)	Repeatedly turned on and off the sprayer by pressing the switch button or add the liquid to the container
Not possible to reach the maximum pressure	Dirty sieve R322	Clean the sieve R322
	Dirty pressure pump	Contact Marolex service: <a href="mailto:serwis@marolex.pl">serwis@marolex.pl</a>

In case of other symptoms preventing proper operation of the sprayer please contact MAROLEX service at: [serwis@marolex.pl](mailto:serwis@marolex.pl)

We offer technical support and on-line help: [serwis.marolex.pl](http://serwis.marolex.pl)

## Removal and Disposal



The damaged sprayer, not suitable for repair, should be utilized in such way as not to pollute the environment. Plastic elements, after cleaning and removing metal parts, should be taken to the utilization point.

These symbols on the products, packaging, and/or on accompanying documents mean that this electrical and electronic equipment and batteries shouldn't be mixed with other household waste.

In order to ensure proper treatment, utilization and recycling of the used devices and batteries, they must be taken to collection points, in accordance with local regulations and the Directives 2002/96/EC and 2006/66/EC. Correct disposal of these products and batteries help to save valuable natural resources and prevent any potential negative effects on human health and the environment.

Information about collection points and recycling of electrical products and batteries can be obtained from your local municipality, waste treatment plant, or in the place of purchase. Incorrect disposal of such waste can result in penalties according to the local law regulations.



These symbols are valid only in the European Union. To utilize the electrical and electronic equipment, please contact your local authorities or dealer and ask for the correct method of treating this waste.



## Terms of repairs and guarantees

1. The warranty period is 24 months from the date of purchase except for the pump with motor, battery with charger, for which the warranty period is 12 months, but not longer than 36 months from the date of production.
2. Sprayers with chemical remains will not be repaired.
3. Reclamation should be lodged to the seller of the sprayer.
4. The claims will be accepted after showing the defected part or giving the full description of the fault.
5. Number of repairs after which the seller can't refuse to exchange the sprayer for a new one (in case there are still defects) is 3.
6. Operations connected with exploitation of the sprayer and described in the manual are not treated as guarantee repairs.
7. The producer won't accept the claim if there were changes in pressure regulation or the storing, operating, maintaining of the product were not according to the manual.
8. Mechanical damages caused by the user can't be the subject to reclamation. The damaged parts can be exchanged but the costs are charged.
9. The manufacturer will not accept warranty claims if the user makes any repairs, replacements or changes in the pump, battery or the control panel
10. Manufacturer will not accept warranty claims if the sprayer was stored, used or serviced in improper way.

GB

---

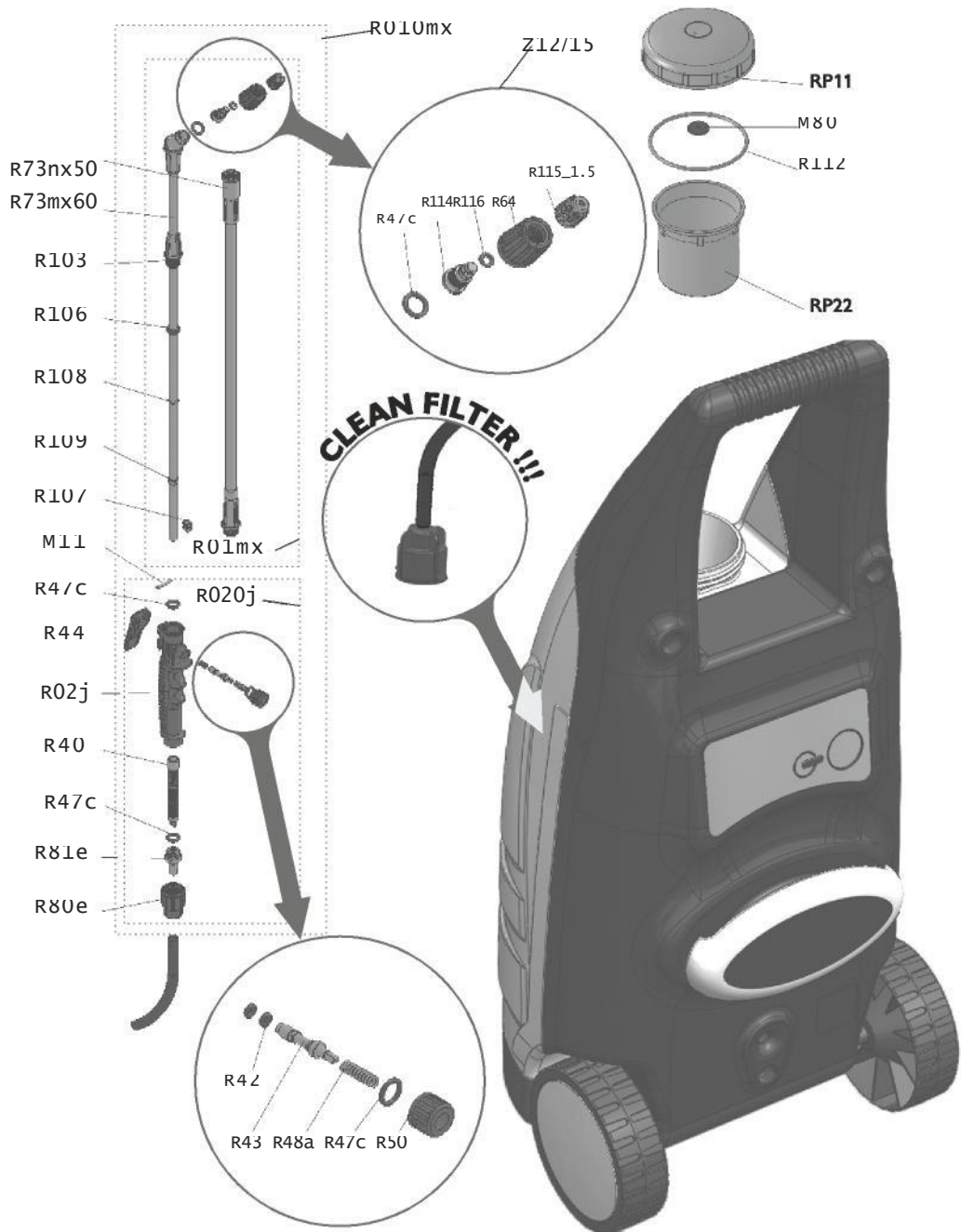
date of the repair	description of the fault

-----

stamp of the retailer and the date

# List of schema elements

Telescopic lance with handle	R010mx
Telescopic lance without handle	R01mx
Feeding valve integrated with handle	Z12/15 R020j
<b>Battery</b>	<b>R318</b>
<b>Container cap</b>	<b>RP11</b>
<b>Lance pipe., fi 12 mm</b>	<b>R73nx50</b>
<b>Lance pipe., fi 8 mm</b>	<b>R73mx60</b>
<b>Clasp faucet, fi 8 mm</b>	<b>R103</b>
<b>Feeding valve trigger</b>	<b>R44</b>
<b>Lance handle</b>	<b>R02j</b>
<b>Filter</b>	<b>R40</b>
<b>Hose end piston</b>	<b>R81e</b>
<b>Hose nut</b>	<b>R80e</b>
<b>Nozzle nucleus</b>	<b>R114</b>
<b>Nozzle nut</b>	<b>R64</b>
<b>Nozzle 1.5 nut for MR</b>	<b>R115_1.5</b>
<b>Piston</b>	<b>R43</b>
<b>Spring</b>	<b>R48a</b>
<b>Nut without hole</b>	<b>R50</b>
<b>Brass bar, fi 3 mm</b>	<b>M11</b>
<b>Lance ring clasp</b>	<b>R107</b>
<b>Telescope ring faucet</b>	<b>R109</b>
<b>Clasp ring</b>	<b>R106</b>
<b>O-ring 11,3x2,4</b>	<b>R47c</b>
<b>O-ring 10x2</b>	<b>R41</b>
<b>O-ring 8x2</b>	<b>R108</b>
<b>O-ring 5,3x2</b>	<b>R116</b>
<b>O-ring 100x3</b>	<b>R112</b>
<b>Funnel with sieje</b>	<b>RP22</b>
<b>Container's cap seal</b>	<b>M80</b>
<b>Diaphragm tank' nut / filter</b>	<b>R322</b>



CE

**MAROLEX Sp.z o.o.**

ul. Reymonta 2  
05-092 Dziekanów Leśny  
POLAND

[www.marolex.pl](http://www.marolex.pl)

077/PL,GB,DE,PT,RUS/2014/A







