

Horizon DataSys

Rollback Rx Server Edition

User Manual



Horizon DataSys
Copyright © 2015 – All Rights Reserved

Last Updated: April 15, 2015

Table of Contents

Table of Contents	2
Introduction	5
Chapter 1: Installation and Setup	6
Minimum Requirements for RollBack Rx Server Edition.....	6
Install RollBack Rx Server Edition	6
RollBack Rx Server Edition Activation	8
Uninstall RollBack Rx Server from Windows.....	10
Uninstall RollBack Rx Server When Windows Fails to Boot	11
Chapter 2: Rollback System	12
Different Ways to Rollback System	12
Rollback System from the Application Console	12
Rollback System When Windows Fails To Start Up.....	13
Rollback System from Desktop Shortcut.....	13
Rollback System with Scheduled Tasks	14
Rollback System with Batch Commands	15
Chapter 3: Recover Files	15
Search Snapshots to Recover Files	15
Explore Snapshots to Recover Files.....	16
Revert Files to Old Time Stamp	16

Chapter 4: Taking Snapshots..... 17

- Taking new snapshot from the Application Console..... 17
- Take New Snapshots When Windows Fails to Start Up 18
- Take New Snapshots from Desktop Shortcut 18

Scheduling Snapshots **Error! Bookmark not defined.**

- Take New Snapshot with Batch Commands..... **Error! Bookmark not defined.**

Chapter 5: Manage Snapshots 19

- Manage Snapshots 19

 - View Snapshot Properties..... 19
 - Delete Snapshots 19
 - Lock or Unlock Snapshots 20
 - Rename Snapshots..... 20
 - Explore Snapshots..... 21

Chapter 6: System Security 22

- RollBack Rx Access Control..... 22
- Create New Users 23

Chapter 7: Scheduled Tasks 24

- Rollback System with Scheduled Tasks 24
- Take Snapshots with Scheduled Tasks 25

Chapter 8: Program Settings..... 27

- Program Appearance..... 27
- Network Settings 27

Chapter 9: Command Line Switches 28

- Command Line Switches 28

Product Support	32
F.A.Q.	33

Introduction

This User's Guide is designed to familiarize PC users with features and benefits of the Rollback Servers software. You can find the complete list of all the product's features and a brief description of each feature in this document. It is highly recommended that you read this User's Guide thoroughly before installing/setup. The information contained in this User's Guide is subject to change without notice. Horizon DataSys assumes no responsibility or obligation of any kind for any errors contained herein or in connection with the furnishing, performance, or use of this document.

Overview

Rollback Rx Server Edition is a robust Windows Server backup and restore utility that enables IT Professionals a instant backup capability that can quickly restore mission critical systems back to any number of multiple restore points with unrivaled speeds. Rollback Rx Server Edition makes it quick and easy to safely sandbox updates and service patches with a failsafe approach to system recovery

How does Rollback Rx compare to Windows built in Windows System Restore?

Windows System Restore can only restore Windows "System Files" and "Some" Program files. RollBack Rx functions at the sector level of the hard drive and restores every bit of data - in essence making your PC a virtual time-machine. Furthermore, if a student or virus attack were to crash you system and you experience the BSOD (blue screen of death) and your PC is unbootable - Windows system restore would not be able to assist you, as you need to be able to load Windows for System Restore to function.

Unlike system restore - If Windows is corrupted or if your server can not boot into Windows - RollBack Rx can still restore your entire system! Since RollBack Rx installs below Windows, it can be accessed prior to Windows boot-up by pressing the "HOME" key. Once you enter into the RollBack Rx sub-console you can roll-back to any snapshot. - Furthermore, you can recover any and all data up-to-the second of the System Crash!

Chapter 1: Installation and Setup

Minimum Requirements for Rollback Rx Server Edition

Verify that your system meets the following minimum requirements before attempting to install Rollback Rx Server

- Intel® Pentium Processor
- Windows Server Operating System
- 2GB of RAM
- 1GB of free disk space for installation
- CD/DVD ROM, if installing from a CD
- Internet Connectivity for software license activation
- At least two partitions or disks

Install Rollback Rx Server Edition

Before installing Rollback Rx Server Edition, please close any applications that are running.

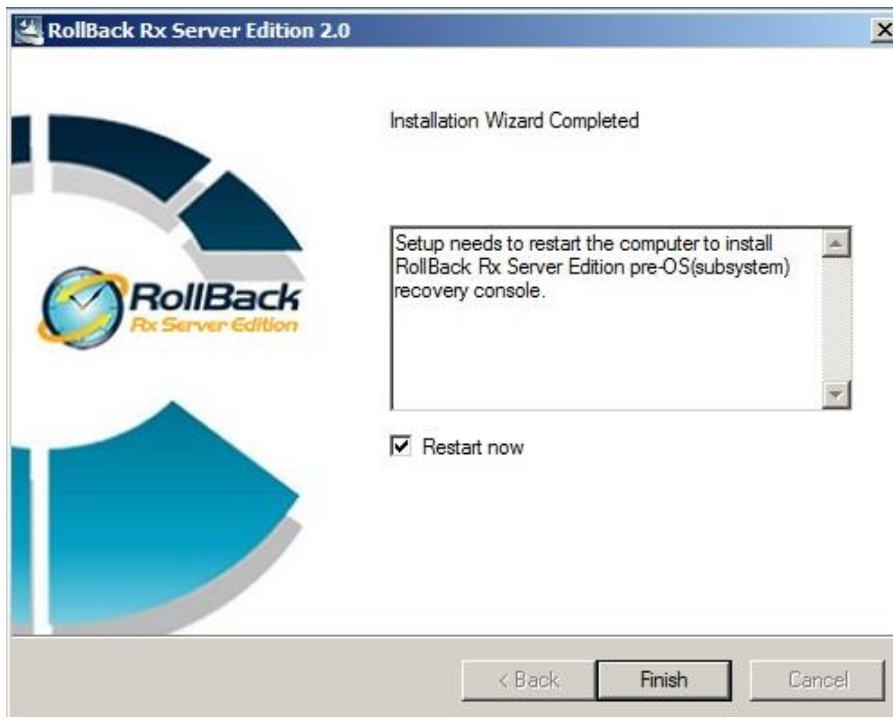
To install Rollback Rx Server Edition, download the setup files, extract the “ZIP” file then run the “Setup.exe”

A welcome screen will appear at the start of the installation process. Click Next to continue installation of Rollback Rx Server Edition.



Read and accept the End User License Agreement. Then click “Next”. Then the installation will start. Once it the installation is completed it will ask you to restart.

Click “Next”. Once all files have been installed, a window will display notifying you that setup is complete. Click Finish to restart your computer now.



Once the PC restart it will started the installation outside of Windows



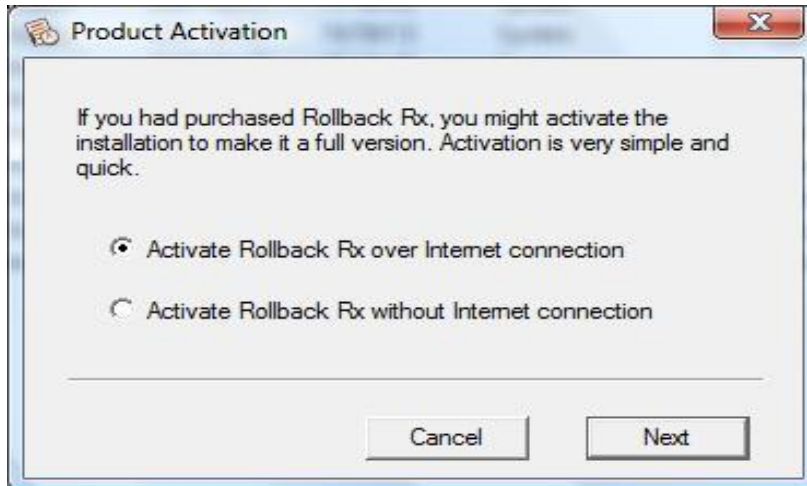
Rollback Rx PC Edition Activation

Horizon Datasys committed to the protection of intellectual property rights and the reduction of software piracy. Everyone in the economic chain, not just the software developer, is hurt by piracy, including the reseller, the support provider, and you, the end user.

Rollback Rx contains a software-based product activation technology, which means you must activate your Rollback Rx installations in order to authenticate its license.

ACTIVATE ROLLBACK RX OVER INTERNET CONNECTION

If the computer has Rollback Rx installed is connected to the Internet, you can easily activate Rollback Rx over the Internet connection.



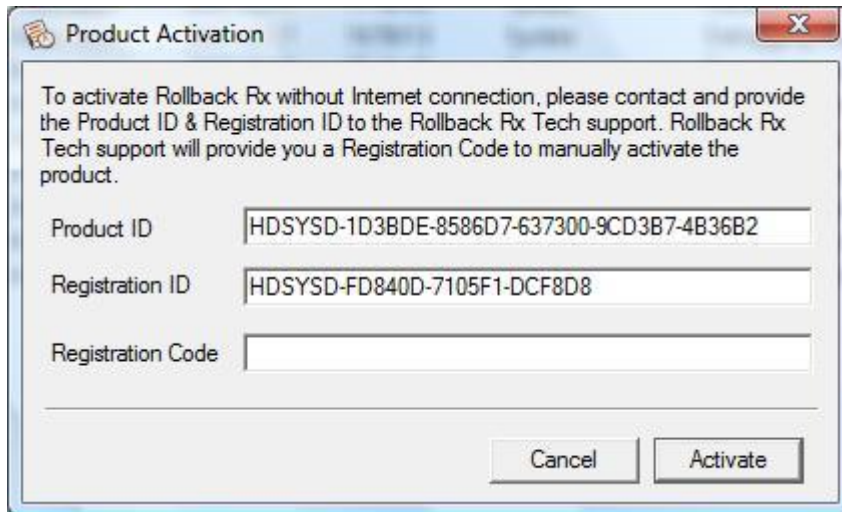
1. Upon the purchase of Rollback Rx, you will receive an authorized Product ID from Horizon Datasys. You can install Rollback Rx with the authorized Product ID and then activate it, or if you already have a demo version of Rollback Rx installed, you can activate the demo setup with the authorized Product ID without uninstall and reinstall the program.
2. To activate Rollback Rx over the Internet connection, right click Rollback Rx system tray icon and select ABOUT from the popup menu. Click on the Activate button on the ABOUT Window, select "Activate Rollback Rx over Internet connection", click on Next.
3. If you have installed Rollback Rx with an authorized Product ID that you received from Horizon Datasys, simply click on the Activate button.
4. If you have installed a demo version of Rollback Rx, you need to first copy and paste the authorized Product ID that you received from Horizon Datasys into the product ID field replacing the demo product ID, and then click on the Activate button.

That is it! You will not need to supply any other information for the activation.

*** You can only activate the number of installations licensed by the authorized Product ID.**

ACTIVATE ROLLBACK RX WITHOUT INTERNET CONNECTION

If the computer has Rollback Rx installed does not have Internet connection, you need to manually activate Rollback Rx with an activation code.



1. To manually activate Rollback Rx, right click Rollback Rx system tray icon and select ABOUT from the popup menu. Click on the Activate button on the ABOUT Window, select "Activate Rollback Rx without Internet connection", click on Next.
2. On the Product Activation Window, you will see a Product ID and an Activation ID, write down those two IDs and send them to Horizon Datasys tech support by fax or phone.
3. Horizon Datasys tech support will reply you with an Activation Code based on the Product ID and Activation ID you provided.
4. Copy and paste the Activation Code into the Activation Code field and then click the Activate button.

Uninstall Rollback Rx from Windows

You can remove Rollback Rx from your computer through one of the two options provided in Windows:

1. Uninstall Rollback Rx from Control Panel → **Add/Remove Programs**.
2. Uninstall Rollback Rx by running Start → All Programs → Rollback Rx → Uninstall.

Uninstaller will prompt you to select a snapshot to uninstall the system to. You can choose to keep the current system and data or return the computer to another snapshot during uninstall. The snapshot selected here will be the final state of the PC after uninstalling Rollback Rx.

****If you have problem with your computer, DO NOT attempt to uninstall Rollback Rx first. Rollback the system to a good snapshot might fix the problem. If you have problem to access either Rollback Rx Application Console or Subsystem Console to perform a rollback, contact Horizon Datasys technical support before attempting to uninstall Rollback Rx.**

Uninstall Rollback Rx When Windows Fails to Boot

If you cannot boot into Windows and you need to uninstall Rollback Rx, you can uninstall it from the Subsystem Console.

Restart your PC, press the **HOME** key as you see the Rollback Rx screen to enter the Subsystem Console. You will need to provide a user name and password if Rollback Rx access control is enabled.



Select Uninstall from the Subsystem Console menu.

Uninstall will prompt you to select a snapshot to uninstall to. The snapshot you selected will be the final state of the PC. Click on **Next** to continue.

****Assuming the PC is not booting when you uninstall Rollback Rx from the subsystem console, uninstall to the current system will result in an unbootable system.**

Chapter 2: Rollback System

Different Ways to Rollback System

You can rollback system with one of the following methods:

- Rollback system from Rollback Rx main program console in Windows
- Rollback system from Rollback Rx subsystem console when Windows O.S. fails to start up
- Rollback system from desktop shortcut in system tray
- Rollback system with command line switches or batch files
- Setup scheduled tasks to automatically rollback system

Rollback System from the Application Console

To rollback system from the Rollback Rx application console:

1. Right click Rollback Rx icon in the system tray. Select "Open Rollback Rx" from the popup menu. You will need a password to access the main program console if the Rollback Rx access control is enabled.
2. In the main program console, under the Common Tasks, click on "Rollback system", the right-hand panel will display all the available snapshots. The current snapshot you are in is indicated by a big green arrow. Select the snapshot you want to rollback system to. You can choose to take a snapshot of the current system before rollback by checking the "Take a snapshot of the current PC before rollback in case I want to come back" checkbox. Click on "Next" to continue.

**** Rollback system to a snapshot will reset everything on the hard drive to the time of the snapshot. To keep the latest user data created after the snapshot, you might select files or folders to transfer to the restoring snapshot, so your data will remain current after rollback as if it's excluded from rollback. To exclude files from the rollback, click on the Exclusion button.**

3. Select the files or folders in the current system that you would like to synchronize with the snapshot you are rolling back to. It is recommended you only select files, because large folders could take longer time to synchronize.
4. The computer needs to restart to rollback the system. Click on "Restart" to restart the computer.

**** You can select to take a snapshot of the current PC before rollback to a snapshot in case you want to come back later**

Rollback System When Windows Fails To Start Up

If you encounter a complete system crash, you are not able to start Windows O.S., you need to rollback the system from the Rollback Rx Subsystem Console.

1. To access the Subsystem Console, restart the computer press the HOME key as you see the Rollback Rx logo. You will need to provide a user name and password if the Rollback Rx access control is enabled.
2. Click on "Rollback system". You will see a list of available snapshots. Select a snapshot and click on "Next" to rollback to the snapshot.

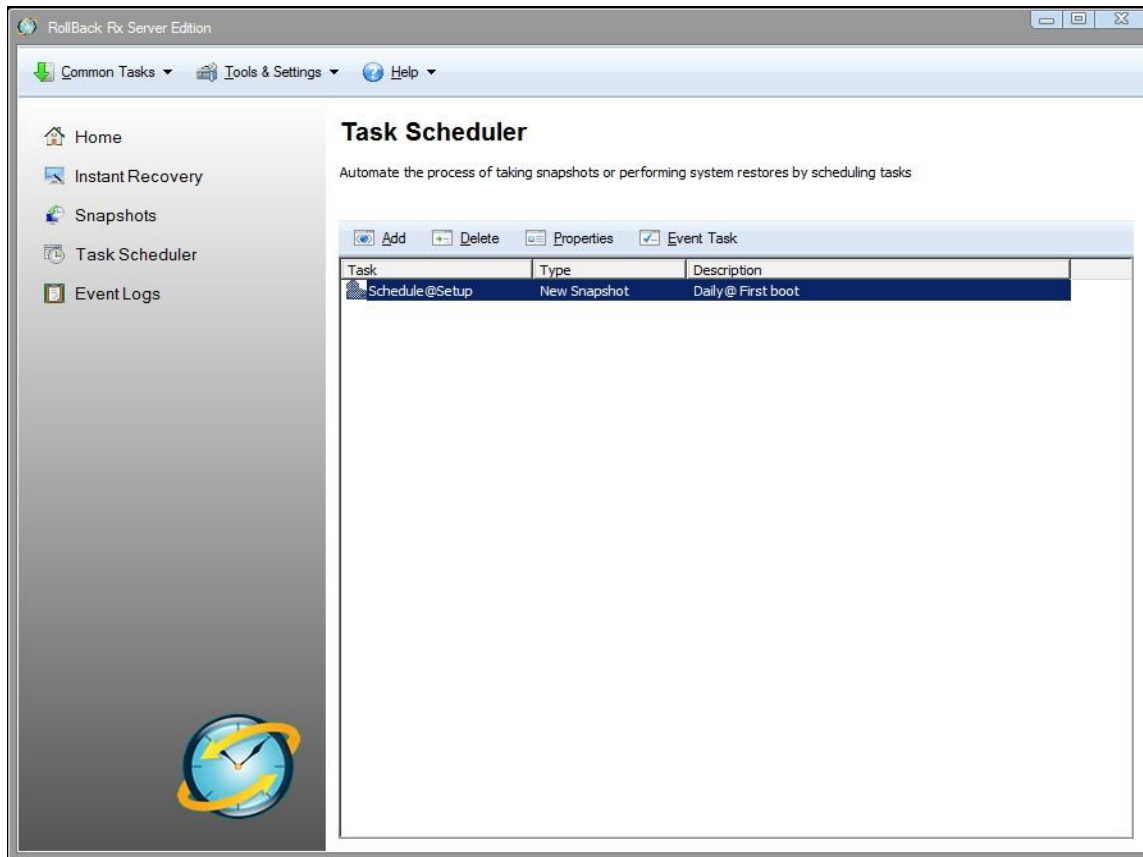
13

Rollback System from Desktop Shortcut

To rollback system from the desktop shortcut:

1. Right click Rollback Rx icon in the system tray, select "Rollback system" from the popup menu. Select a snapshot to rollback the system to. You can also choose to take a snapshot of the current PC by checking the "Take a snapshot of the current PC before rollback in case I want to come back" checkbox. Click on "Next" to continue.
2. The computer needs to restart to rollback to the snapshot. Click on "Restart" to restart the computer.

Rollback System with Scheduled Tasks



You can schedule Rollback Rx to automatically rollback system with one of the following seven schedule settings:

- Schedule Rollback Rx to rollback system on restart
 - Schedule Rollback Rx for system restore on log off
 - Schedule Rollback Rx for a one-time system rollback
 - Schedule Rollback Rx for hourly system rollback
 - Schedule Rollback Rx for daily system rollback
 - Schedule Rollback Rx for weekly system rollback
 - Schedule Rollback Rx for monthly system rollback
1. Right click Rollback Rx icon in the system tray. Select "Open Rollback Rx" from the popup menu. You will need a user name and password to log into Application Console if the Rollback Rx access control is enabled.
 2. In the Application Console, under the Control Panel Task menu, click on the "Scheduled tasks" and "Add" to bring up the new schedule settings window, Select "Rollback

system" in the schedule task drop-down list; Select "your restore schedule type" in the schedule type drop-down list.

3. For the restore settings, you need select which snapshot you want to rollback the system to. You can select to a). rollback system to the latest snapshot, b). rollback system to a specific snapshot. You also need to choose what to do with other snapshots after rollback the system. a). keep all the other snapshots. b). remove all the other unlocked snapshots. Click on "Save" to save the new schedule setting.
4. You will then see a new scheduled task entry. You can select to view the properties of the scheduled task or delete it.

Rollback System with Batch Commands

You might incorporate Rollback Rx instant recovery ability into your application by calling a command line switch, refer to the Command Line Switches section of this user's guide for details on how to rollback system with batch commands.

Chapter 3: Recover Files

Search Snapshots to Recover Files

To recover files or folders from a snapshot:

1. Right click Rollback Rx icon in the system tray. Select "Open Rollback Rx" from the popup menu. You will need a user name and password to logon Rollback Rx Application Console if the access control is enabled.
2. In the Application Console, under the Common Tasks, click on "Recover files". The right side panel shows the recover files option. Choose one of the three search options provided and then input the search string. Click on "Next" to continue.
3. From the snapshot list, select the snapshot you want to recover the files from. If you are not sure which snapshot to recover the files from, use the calendar and clock to approximate your time. Click on "Next" to continue.

4. On the search results window, select and right click the files or folders you want to recover. You can choose to recover the files to a new location or to its original location. **If you choose to recover the files to the original location, the existing files with the same name will be overwritten.**

Explore Snapshots to Recover Files

To explore snapshots to recover files or folders:

1. Right click Rollback Rx icon in the system tray. Select "Open Rollback Rx" from the popup menu. You will need a user name and password to access the Application Console if the Rollback Rx access control is enabled.
2. In the Application Console, under the Common Tasks, click on "Recover files". The right side panel shows the recover files options. Choose "I want to explore snapshots to find files to recover" option, click on "Next" to continue.
3. From the snapshot list, select the snapshot you want to recover the files from. If you are not sure which snapshot to recover the files from, use the calendar and clock to approximate your time. Click on "Next" to continue.
4. Rollback Rx will create virtual drive(s) for the selected snapshot. You can see the virtual drive(s) in My Computer and browse them as regular drives to find files. To recover a file or folder, copy it to your other drives in My Computer.

Revert Files to Old Time Stamp

If you have made unwanted changes to a file, or you just want to look at an earlier version of a document. You can use Rollback Rx to revert a file to its earlier versions.

1. Right click the file you want to revert. Select "Restore from snapshot" on the popup menu. You will need a user name and password to logon Rollback Rx Application console if the access control is enabled.
2. From the snapshot list, select a snapshot you want to recover the file from. If you are not sure which snapshot to recover files from, use the calendar and clock to approximate the time.
3. You can choose to save the file to a new location or to overwrite the existing file. Click on "Next" to continue.

Chapter 4: Taking Snapshots

The magic of Rollback Rx is with its snapshots. You recover a crashed system by rollback the system to a good snapshot; you recover a corrupted file from a snapshot archive. A snapshot can be viewed as the picture of the system at a specific time. It is very important to take new snapshots to include changes on your system, so in the case of system rollback, you won't be rolled back to weeks or months ago. You can take a new snapshot in seconds with Rollback Rx.

You can take a new snapshot with one of the following methods:

- Take new snapshots from Rollback Rx main program console in Windows
- Take new snapshot from Rollback Rx Subsystem console when Windows O.S. fails to start up
- Take new snapshots from desktop shortcut in system tray
- Take new snapshots with command line switches or batch files
- Setup scheduled tasks to automatically take new snapshots

Taking new snapshot from the Application Console

To take new snapshots from the Rollback Rx Application Console:

1. Right click Rollback Rx icon in the system tray. Select "Open Rollback Rx" from the popup menu. You will need a password to logon Rollback Rx Application Console if the access control is enabled.
2. In the Application Console, under the Commons Tasks menu, click on "Take snapshot". You need to enter a name and description for the new snapshot. You can also choose to lock the new snapshot by checking the "lock the new snapshot" option. Locking the snapshot will prevent it from being deleted. Click on "Next" to continue.

* Snapshot name is limited to 20 characters.

* Snapshot description is limited to 50 characters.

3. New snapshot will be created instantly.

**To ensure best snapshot's integrity, it is recommend you save all the files and close all running applications before taking a new snapshot.

Take New Snapshots When Windows Fails to Start Up

If you encounter a complete system crash, you are not even able to start Windows operating system. Before you choose to rollback system to another snapshot from the Rollback Rx Subsystem Console, you can take a new snapshot from the Subsystem Console to preserve your data up to the moment of crash. You can later access the crash snapshot for file recovery

1. Restart the computer. Press the HOME key as you see the Rollback Rx Subsystem Console screen. You will need a user name and password if the Rollback Rx access control is enabled.
2. Click on "Take snapshot" button. You need to enter a name and description for the new snapshot. Click on "Next" to take the new snapshot instantly.

* Snapshot name is limited to 20 characters.

* Snapshot description is limited to 50 characters.

**By taking a snapshot of the crashed system, you preserve whatever it is available in that crashed system. After you rollback the system to an earlier snapshot, you can search the snapshot of the crashed system for possible data recovery.

Take New Snapshots from Desktop Shortcut

To take new snapshots from the desktop shortcut in system tray:

1. Right click Rollback Rx icon in the system tray, select "Take snapshot" from the popup menu. You will need a user name and password if the Rollback Rx access control is enabled.
2. Enter a name and description for the new snapshot. You can also choose to lock the new snapshot by checking the "Lock the new snapshot" option. Locking the snapshot will prevent it from been deleted. Click on "Next" to continue.
3. New snapshot will be created instantly.

**To ensure best snapshot's integrity, it is recommended you save all the files and close all running applications before taking a new snapshot.

Chapter 5: Manage Snapshots

Manage Snapshots

View Snapshot Properties

To view the properties of a snapshot:

1. Right click Rollback Rx icon in the system tray. Select "Open Rollback Rx" from the popup menu. You will need a user name and password to logon Rollback Rx Application Console if the access control is enabled.
2. In the Application Console, under Common Tasks, click on "Snapshot history". The right side panel shows all the available snapshots. The current snapshot you are in is indicated by a big green arrow.
3. Right click a snapshot and select "Properties" from the popup menu. You can change the snapshot name and description on the properties. The used space information reveals how much drive space is taken by all snapshots and how much is taken by this snapshot.

Delete Snapshots

To delete Rollback Rx snapshots:

1. Right click Rollback Rx icon in the system tray, select "Open Rollback Rx" from the popup menu. You will need a user name and password to logon Rollback Rx Application Console if the access control is enabled.
2. In the Application Console, under Common Tasks, click on "Snapshot history". The right side panel shows all the available snapshots. The current snapshot you are in is indicated by a big green arrow.

3. Right click a snapshot and select "Delete" from the popup menu. To delete multiple snapshots, hold down Ctrl key while selecting snapshots.
4. You can also use Delete All Unlocked button to delete all the unlocked snapshots.

**** You can only delete unlocked snapshots. To delete locked snapshots, unlock it first.**

Lock or Unlock Snapshots

You can lock snapshots to prevent it from being accidentally deleted or removed by program settings. To delete a locked snapshot, you have to unlock it first.

1. Right click Rollback Rx icon in the system tray, select "Open Rollback Rx" from the popup menu. You will need a user name and password to logon Rollback Rx Application Console if the access control is enabled.
2. In the Application Console, under Common Tasks, click on "Snapshot history". The right side panel shows all the available snapshots. The current snapshot you are in is indicated by a big green arrow.
3. Right click a snapshot and select "Lock/Unlock" from the popup menu. To lock/unlock multiple snapshots, hold down Ctrl key while selecting snapshots.
4. You can also use Lock All/Unlock All buttons to lock/unlock all the snapshots.

Rename Snapshots

To rename a snapshot:

1. Right click Rollback Rx icon in the system tray, select "Open Rollback Rx" from the popup menu. You will need a user name and password to logon Rollback Rx Application Console if the access control is enabled.
2. In the Application Console, under Common Tasks, click on "Snapshot history". The right side panel shows all the available snapshots. The current snapshot you are in is indicated by a big green arrow.
3. Right click a snapshot and select "Rename" from the popup menu.

Explore Snapshots

You can mount a snapshot as virtual drives and explore it as local drives to recover files. To explore a snapshot:

1. Right click Rollback Rx icon in the system tray, select "Open Rollback Rx" from the popup menu. You will need a user name and password to logon Rollback Rx Application Console if the access control is enabled.
2. In the Application Console, under Common Tasks, click on "Snapshot history". The right side panel shows all the available snapshots. The current snapshot you are in is indicated by a big green arrow.
3. Right click a snapshot and select "Explore snapshot" from the popup menu.
4. The snapshot will be mounted as virtual drive(s). You can open and explore the virtual drive(s) as local disk in My Computer. Click on "Dismiss virtual Drive(s) to dismount the snapshot or rebooting the PC will dismount the snapshot as well.

Chapter 6: System Security

Rollback Rx Access Control

To prevent unauthorized users from rollback your system or recover your hidden files, you can password protect access to Rollback Rx consoles by enabling Access control. The Access Control's user accounts and password apply to both Rollback Rx Application Console and the Subsystem Console.

Enable Rollback Rx Access Control during Setup

To enable Rollback Rx Access Control during setup, you need to use either Custom Setup or Advanced Setup:

1. To enable the Access Control in the Custom Setup. Select the enable Access Control checkbox and provide a password for the administrator account. You must remember this password. You will need it to access the Rollback Rx program consoles. You also need this password to uninstall Rollback Rx.
2. To enable the Access Control in the Advanced Setup, you need to use the Advanced Setup Configuration Wizard (ASCW) provided in the support folder on the program CD. For more information on ASCW, refer to the Rollback Rx deployment whitepaper in the document folder on the program CD.

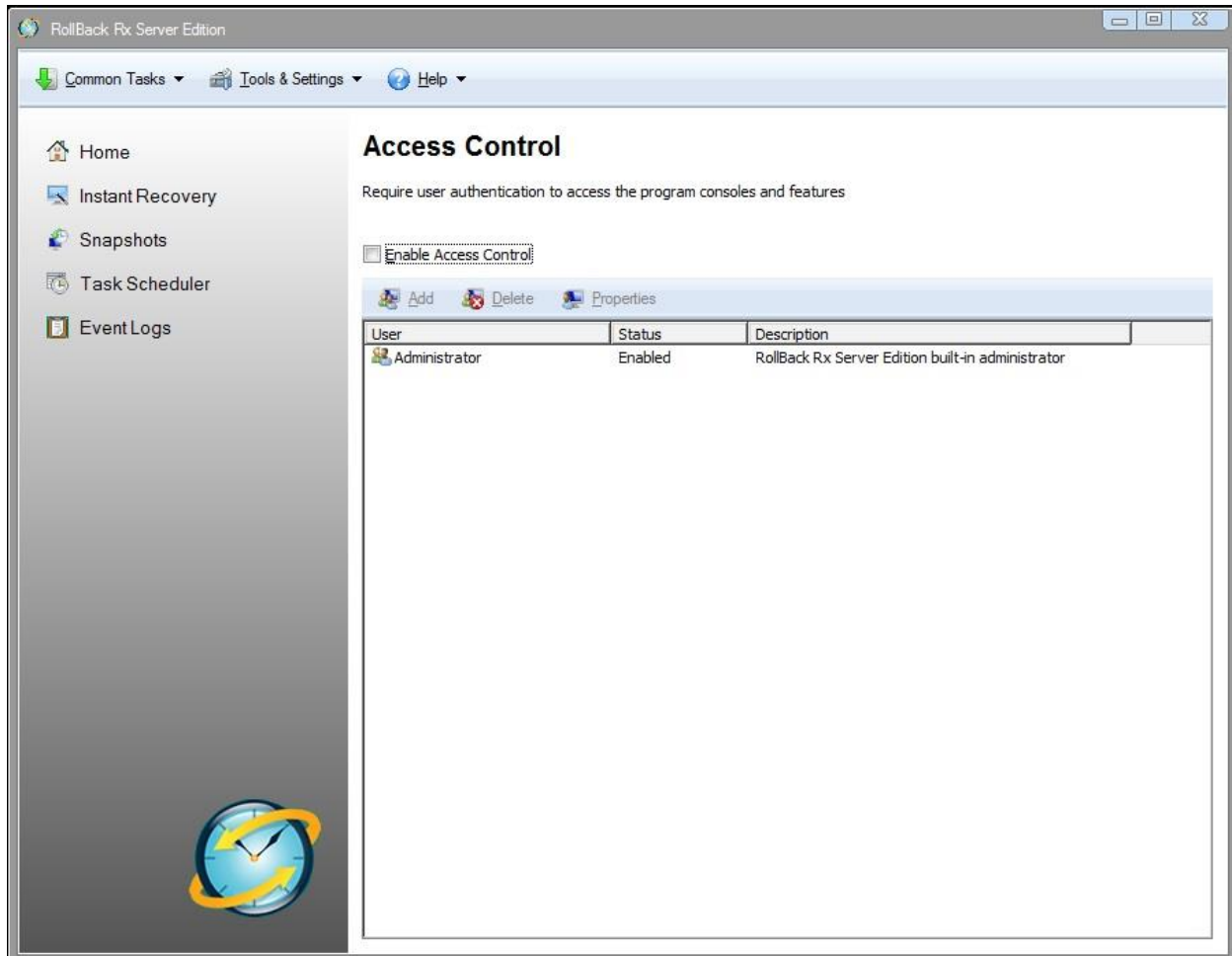
Enable Rollback Rx Access Control after Setup

1. To enable Rollback Rx Access Control after setup, right click Rollback Rx icon in the system tray. Select "Open Rollback Rx" from the popup menu.
2. In the Application Console, under Control Panel, click on "Access Control". Check "Enable access control" checkbox and then click on "Apply".

3. You will be prompted to set a password for the administrator account. You must remember this password. You will need it to access the Rollback Rx program consoles. You also need this password to uninstall Rollback Rx.

**** If you have installed Rollback Rx using the Default Setup, access control is disabled by default**

Create New Users



Enable Rollback Rx Access Control only activates the build-in administrator account. The administrator account has access rights to all the program features. Rollback Rx allows you to create new users and grant them rights to certain features of the program.

1. Right click Rollback Rx icon in the system tray, select "Open Rollback Rx" from the popup menu. You will need a user name and password to logon the Rollback Rx Application Console if the access control is enabled.
2. In the Application Console, under Control Panel, click on "Access Control". Click on "Add" to create a new user account. You can grant access rights to the new user. Click on "Add" to create the new user.

3. The new user will be listed in the Access Control window. As the new user logs into the Application Console, he will only have access to the features he was granted rights to.

**** Remove "delete snapshots" right from a user will also deny him from locking or unlocking snapshots.**

Chapter 7: Scheduled Tasks

Rollback System with Scheduled Tasks

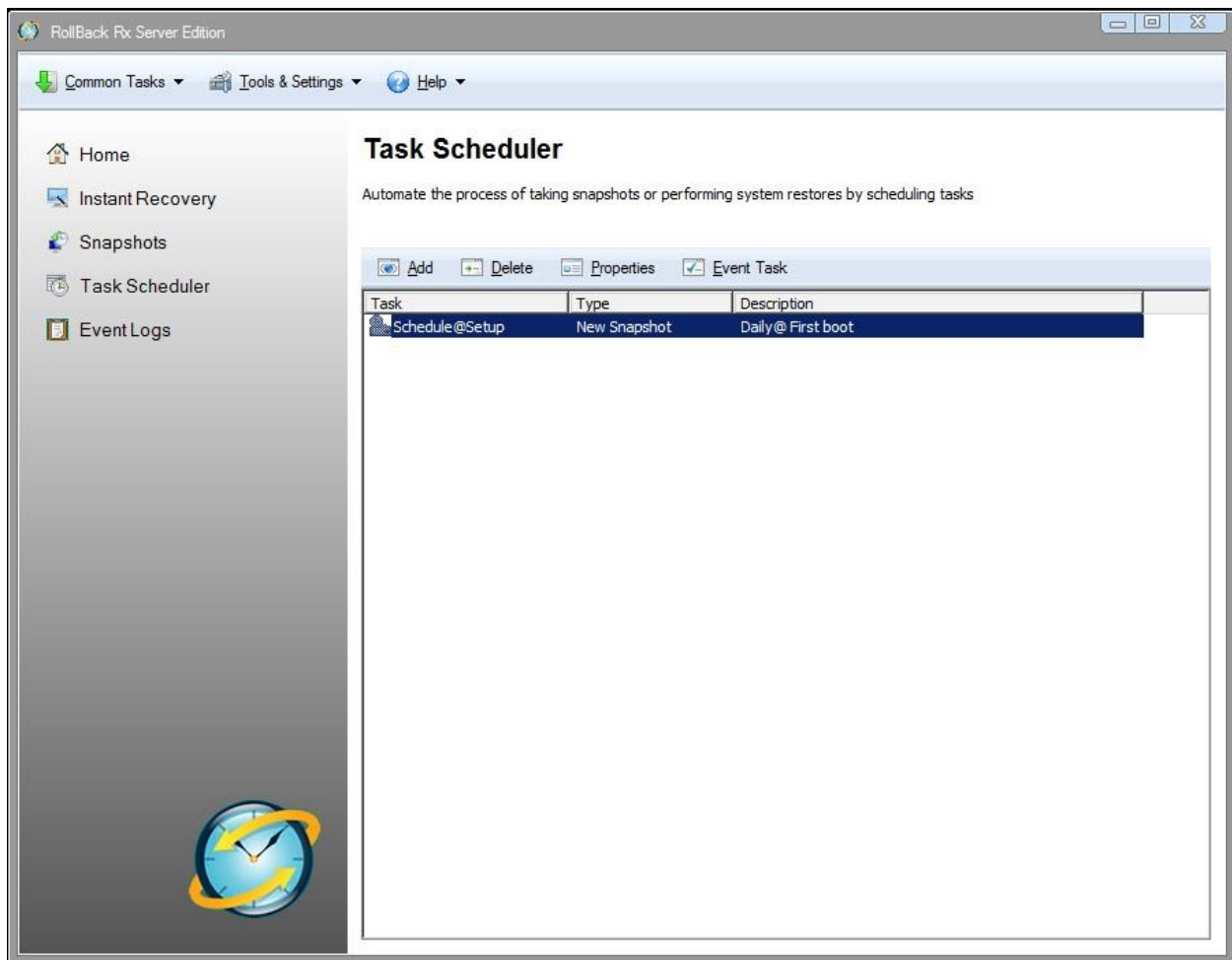
You can schedule Rollback Rx to automatically rollback to a snapshot with one of the following seven schedule settings:

- Schedule Rollback Rx to rollback system on restart
- Schedule Rollback Rx for system restore on log off
- Schedule Rollback Rx for a one-time system rollback
- Schedule Rollback Rx for hourly system rollback
- Schedule Rollback Rx for daily system rollback
- Schedule Rollback Rx for weekly system rollback
- Schedule Rollback Rx for monthly system rollback

1. Right click Rollback Rx icon in the system tray, select "Open Rollback Rx" from the popup menu. You will need a user name and password to logon the Application Console if the access control is enabled.
2. In the Application Console, under Control Panel, click on the "Scheduled tasks". The right side panel shows the scheduled tasks. Click on "Add" to bring up the new schedule settings window. Select "Rollback system" in the schedule task drop-down list and select "a schedule type" in the schedule type drop-down list.

3. For the restore settings, you can select which snapshot you want to rollback the system to. You can select to a). rollback system to the latest snapshot, b). rollback system to a specific snapshot. You can also choose what to do with other snapshots after rollback, such as a). keep all the other snapshots. b). remove all the other unlocked snapshots. Click on "Save" to save the new schedule task.
4. You will then see a new scheduled task entry. You can select to view the properties of the scheduled task or delete it.

Take Snapshots with Scheduled Tasks



You can schedule Rollback Rx to automatically take new snapshots with one of the following seven schedule settings.

- Schedule Rollback Rx to take new snapshots on restart
 - Schedule Rollback Rx to take a one-time new snapshot
 - Schedule Rollback Rx to take hourly new snapshots
 - Schedule Rollback Rx to take daily new snapshots
 - Schedule Rollback Rx to take weekly new snapshots
 - Schedule Rollback Rx to take monthly new snapshots
 - Schedule Rollback Rx to take event based snapshots
1. Right click Rollback Rx icon in the system tray, select "Open Rollback Rx" from the popup menu. You will need a user name and password to logon the Application Console if the access control is enabled.
 2. In the Application Console, under Control Panel, click on the "Scheduled tasks". The right side panel shows the scheduled tasks. Click on "Add" to bring up the new schedule settings window. Select "Take snapshot" in the schedule task drop-down list and select "a schedule type" in the schedule type drop-down list. Click on "Save" to save the new scheduled task.
 3. You should see a new scheduled task entry. You can select to view the properties of the scheduled task or delete it.

Chapter 8: Program Settings

Program Appearance

To customize Rollback Rx program appearance:

1. Right click Rollback Rx icon in the system tray, select "Open Rollback Rx" from the popup menu. You will need a user name and password to logon the Application Console if the Rollback Rx access control is enabled.
2. In the Application Console, under Control Panel, click on "Program settings". The right side panel shows the program settings options, click on the "Program Appearance" tab. There you can customize the following Rollback Rx program settings:
 - Do not show Rollback Rx icon in the system tray
 - Do not show Rollback Rx logo during startup

Network Settings

To connect Rollback Rx to a remote management console (Rollback Rx RMC) for centralized client management in a network environment:

1. Right click Rollback Rx icon in the system tray, select "Open Rollback Rx" from the popup menu. You will need a user name and password to logon the Application Console if the access control is enabled.
2. In the Application Console, click on "Program settings".

Rollback Rx Remote Management Console (RMC) server name or IP address
Rollback Rx RMC 's server port 900 must be turn on.

If the computer is behind a proxy or firewall, you need to provide proxy server's settings in order to connect to the remote management console server.

Chapter 9: Command Line Switches

Command Line Switches

Rollback Rx provides you a set of command-line switches to take snapshot and restore system with batch files or network scripts.

Rollback System

Shieldcmd.exe /restore

/baseline //Restore to the baseline snapshot.
 /current //Restore to current snapshot.
 /n "snapshot name" //Restore to a snapshot by name.
 /t "08/11/2004 18:00" //Restore system to the snapshot that is closest to 08/11/2005 18:00.
 /run "path to the executable" //Spawn a process after the restore.
 [/u "user"] //user name, only required if the access control is enabled.
 [/p "password"] //user password, only required if the access control is enabled

Manage the Baseline

Shieldcmd.exe

/resetbase //Reset PC back to the baseline snapshot.
 /updatebase //Update the current system as the new baseline.
 [/u "user"] //user name, only required if the access control is enabled.
 [/p "password"] //user password, only required if te access control is enabled.

Take Snapshot

Shieldcmd.exe /snapshot

/n "snapshot name" //Take a new snapshot with given snapshot name.
 [/d "snapshot description"] //Take a new snapshot with given description, optional.
 /overwrite //Take a new snapshot with given snapshot name and overwrite the existing snapshot with the same name.
 [/u "user"] //user name, only required if the access control is enabled.
 [/p "password"] //user password, only required if the access control is enabled.

Program Settings

Help

ShdCmd.exe {/Help | ?}

Setup and Uninstall

Unattended Setup

Setup.exe /s

Uninstall

ShdCmd.exe /Uninstall {/baseline | /current | /i snapid | /n snapname | /t createtime} /u
administrator /p password

*Snapid can be retrieved by running ShdCmd.exe /list

Program Settings

Tray Icon

ShdCmd.exe /TrayIcon [/show | /hide] /u administrator /p password

Language

ShdCmd.exe /Lang [/set langid] /u administrator /p password

*Langid can be retrieved by running ShdCmd.exe /Lang

Subsystem Display Mode

ShdCmd.exe /StartMode [text | color16 | color256 | colortrue] /u administrator /p password

Show Protected Partitions

ShdCmd.exe /Part /u administrator /p password

Import Program Settings from Setup.ini

ShdCmd.exe /Import {/path infilepath} /u administrator /p password

Access Control

Access Control

ShdCmd.exe /AccessCtrl [/enable] [/disable] /u administrator /p password

/enable: Enable access control

/disable: Disable access control

*ShdCmd.exe /AccessCtrl: Show access control status

Add Users

ShdCmd.exe /AddUser /n username [/d description] [/right hexvalue] [/pwd password]
[/disable] /u administrator /p password

Delete User

ShdCmd.exe /DelUser {/i userid | /n username} /u administrator /p password

List Users

ShdCmd.exe /ListUser /u administrator /p password

ChangePwd

ShdCmd.exe /ChangePwd {/i userid | /n username} /pwd [password] /u administrator /p
password

*Userid can be retrieved by running ShdCmd.exe /ListUser

Snapshots

Create New Snapshots

ShdCmd.exe /Snapshot /n snapname [/c comment] [/lock] /u administrator /p password

Delete Snapshots

ShdCmd.exe /Delete {/i snapid | /n snapname | /t createtime} /u administrator /p password

*Snapid can be retrieved by running ShdCmd.exe /list

Lock Snapshot

ShdCmd.exe /Lock {/all | /baseline | /current | /i snapid | /n snapname | /t createtime} /u administrator /p password

*Snapid can be retrieved by running ShdCmd.exe /list

Unlock Snapshots

ShdCmd.exe /Unlock {/all | /baseline | /current | /i snapid | /n snapname | /t createtime} /u administrator /p password

*Snapid can be retrieved by running ShdCmd.exe /list

Mount Snapshots

ShdCmd.exe /Mount {/baseline | /current | /i snapid | /n snapname | /t createtime} /u administrator /p password

*Snapid can be retrieved by running ShdCmd.exe /list

Dismount Snapshots

ShdCmd.exe /Unmount /u administrator /p password

List All Snapshots

ShdCmd.exe /List /u administrator /p password

Product Support

Product Limitations

The following limitations still exist in Rollback Rx v9.0:

Hard Disk Support – Rollback Rx can only protect one IDE/SATA/PATA hard drive. If a system has more than one hard disk, Rollback Rx will protect the drive designated as the “Primary.” Rollback Rx does not support SCSI, RAID or MIRROR hard drive configurations.

Booting From an External Media (OS) – Rollback Rx cannot protect the hard drive when changes are made to the hard drive from an external or foreign (non-Windows) operating system bypassing Rollback Rx protection drivers. For example, booting from a CD-ROM will start a different OS that may be able to change the hard drive and produce unpredictable results.

Disk Encryption Programs that Intercept Low-Level Disk I/O – Rollback Rx may conflict with some applications that proxy low-level disk I/O.

Compressed Drives – Rollback Rx cannot be installed on compressed NTFS drives. (The workaround is to un-compress the drive, install Rollback Rx and then re-compress the drive)

Disk Repartitioning – The disk with Rollback Rx installed cannot be re-partitioned without uninstalling Rollback Rx.

Dual Boot of Windows and Linux OS on the Same Hard Drive – Rollback Rx does not support systems that have multiple Windows Operating Systems with non-Windows Operating System (like Linux) loaded on the same hard drive.

Support Options

Horizon Datasys is committed to provide satisfying support and excellent service to our valued customers. Our goal is to provide you with professional assistance in the use of our software through the variety of methods including documentations, online or personal contacts. According to our experience with customers, most of their questions can be answered in our Frequently Asked Question or other various technical white papers. Please check your questions in the F.A.Q. and knowledge base before proceeding with other support options.

If you were not able to find answers to your questions in the Rollback Rx FAQ and knowledge base, you can go to Horizon Datasys web site support page for more product related documents, white papers and other information.

<http://support.horizondatasys.com/ics/support/default.asp?deptID=4443>

You can submit an online support case with Horizon Datasys technical support team through our online support forum.

<http://support.horizondatasys.com/ics/support/ticketNew.asp>

The Horizon Datasys customer service department can assist you with non-technical questions. Visit Horizon Datasys support and service web site to find your local customer service number to:

Order an upgrade

Find a distributor in your area

Update your registration information

F.A.Q.

For a list of Frequently Asked Questions about Rollback Rx, please visit:

<http://www.horizondatasys.com>

Knowledge Base

Horizon Datasys online knowledge base contains general information about Horizon Datasys products and problems reported by users on various laptop and desktop computers.

You can find answers for most of your questions or problems in the knowledge base:

<http://support.horizondatasys.com/ics/support/KBSplash.asp>

Help Desk

Horizon Datasys provides an easy to use helpdesk for you to submit online support tickets and get response from our support technicians:

<http://support.horizondatasys.com/ics/support/ticketNew.asp>

