

Table of Contents

1 User Information.....	2
2 Product Overview.....	3
2.1 Package list.....	3
2.2 Product Appearance.....	3
2.3 Remote Control.....	4
2.4 First Time Usage.....	6
3 Main Functions.....	8
3.1 Setup.....	8
3.2 DTV.....	14
3.3 Browsing Files and Media Playback.....	17
3.4 A/V Streaming via Network.....	19
3.5 A/V Streaming via UPnP-server.....	20
3.6 A/V Streaming via Linux NFS server.....	20
3.7 Music playlist & Photo Album management.....	21
3.8 File Copy/Delete/Move/Rename.....	21
3.9 Internet Media.....	22
3.10 BT Download.....	22
3.11 Transmission.....	24
3.12 Web Browser.....	24
3.13 NAS function.....	24
3.14 FTP Server.....	25
3.15 Remote Management.....	25
3.16 Firmware upgrade.....	26
4 Appendixes.....	27
4.1 Specifications.....	27
4.2 Frequently Asked Questions.....	27
5 Copyrights and Trademarks.....	29
6 Warranty.....	29
7 GPL Statement.....	29

1 User Information

This player's design and manufacture has your safety in mind. In order to safely and effectively use this player, please read the following before usage.

1.1 Usage cautions

User should not modify this player. If commercial hard disk is being used, the environmental temperature should be within +5°C ~ +35°C.

1.2 Power

The player's power voltage: DC 12V.

When using this player, please connect the supplied AC adapter or AC adapter cable to the player's power jack. When placing the adapter cable, make sure it can not get damaged or be subject to pressure. To reduce the risk of electric shock, unplug the adapter first before cleaning it. Never connect the adapter to the player in a humid or dusty area. Do not replace the adapter or cable's wire or connector.

1.3 Repair

If the player has a problem, you should take it to an appointed repair center and have the specialists do the repair. Never repair the player yourself, or you might damage the player or endanger yourself or your data.

1.4 Disposing of the player

When you dispose of the player, be sure to dispose it appropriately. Some countries may regulate disposal of electrical device, please consult with your local authority.

1.5 Hard disk cautions

The player uses an internal hard disk for data storage, in normal case, formatting or reparation is not required.

You should carefully read the < Frequently Asked Questions > chapter, and check our website for latest information before formatting the hard disk.

- Physical impact may create bad sector in the hard disk, you can use CHKDSK to fix the problem.
- All data stored in the player may be lost due to physical impact, electrical shock, power lost, HDD format etc. Please backup your data.
- It is suggested to do defragment after a long period of usage.
- Regularly backup the data in the hard disk so that it can be recovered in the event of data corruption or loss. Our company takes no responsibility for loss of data stored on the hard disk.

1.6 Others

- ✧ When using this player, please do not let the player come into contact with water or other liquid, if water is accidentally spilled on the player, please use a dry cloth to absorb the spillage.
- ✧ Electronic products are vulnerable, when using please avoid shaking or hitting the player,

and do not press the buttons too hard.

- ✧ Do not disassemble, repair the player or change the design of the player. Any damage done will not be covered by the repair policy.
- ✧ Avoid hitting the player with hard object, avoid shaking the player, and stay away from magnetic fields.
- ✧ During electrostatic discharge and the strong electromagnetic field, the product will malfunction. In this case, please unplug the power cable and the product will return to normal performance next time it is powered on.

2 Product Overview

2.1 Package list

Part	Quantity
Player	1
AV cable	1
USB 2.0 Cable	1
Remote Control	1
Remote Control Battery	2
AC/DC adaptor	1
User Manual	1

Note:

The actual contents in the package might be different from the packing list in this manual.

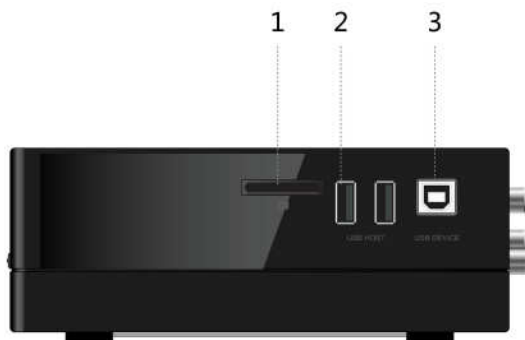
2.2 Product Appearance

Front Panel



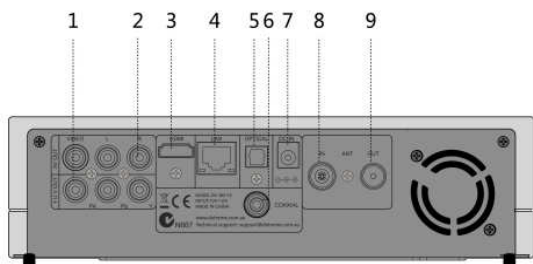
1. Infrared receiver window
2. Card indicator
3. Recording indicator
4. Power button & Standby button

Side Panel



1. Memory Card slot
2. USB 2.0 HOST port
3. USB 2.0 Device port

Back Panel



1. A/V OUT jack
2. Y/Pb/Pr OUT jack
3. HDMI jack
4. RJ45 LAN socket
5. S/PDIF Optical jack
6. S/PDIF Coaxial jack
7. Power input
8. ANT./RF IN socket
9. ANT./RF OUT socket

2.3 Remote Control

	1	2	3	4	5	6	7	8	9	10	11	12	13	14	15	16	17	18	19	20	21	22	23	24	25	26	27	28	29	30	31	32	33	34	35	36
	1. Power	2. Numeric buttons	3. Shuffle.	4. VOL-	5. Mute	6. Menu	7. Home	8. Navigational buttons	9. Stop	10. Play/Pause	11. FR	12. FF	13. Red	14. Green(EPG)	15. Setup	16. TV SYS	17. Goto	18. Slow	19. REC	20. Edit	21. Copy	22. Timeshift	23. Angle	24. Zoom	25. Audio	26. Subtitle	27. Yellow(TTX)	28. Blue	29. Prev	30. Next	31. Info	32. OK	33. Back	34. VOL+	35. Repeat	36. Eject

No.	Button	Function
1	Power	Press to enter standby mode or wake up.
2	Numeric buttons	Press to enter channel numbers or numeric input when changing settings.
3	SHUFFLE	Press to shuffle the music.
4	VOL-	Press to decrease the volume.
5	Mute	Press to mute audio output, and press again to resume.
6	Menu	Press to enable the option menu, where you can change the review mode of file manager and media library;

		Press to display or hide the option menu during playback.
7	Home	Press to enter the home screen.
8	Navigational buttons	Press the arrow buttons to select menu options, and the OK button to confirm. Press Up/Down to rotate a photo during photo playback.
9	Stop	Press to stop playback.
10	Play/ Pause	Press to begin/pause playback.
11	FR	Press to fast rewind the current playback. Press repeatedly to select speeds
12	FF	Press to fast forward the current playback. Press repeatedly to select speeds.
13	RED	Function is available in virtual keyboard.
14	Green(EPG)	Press to enter the Electronic Program Guide which displays an on-screen list of programs for the whole day when watching Digital Terrestrial TV.
15	Setup	Press to enter the setup menu.
16	TV SYS.	Press to switch between NTSC, PAL, 480P, 576P, 720P, 1080I, and 1080P.
17	Goto	Press to jump to a specific point on a title. Specify the point using Title, Chapter and Time.
18	Slow	Press to play back in slow motion. Press the PLAY button to resume regular playback.
19	REC	Press to begin recording. Press repeatedly to set one touch recording (OTR) length (30 MIN. / 60 MIN. / 90 MIN. / 120 MIN. / 180 MIN. / 240 MIN. / Off)
20	EDIT	Press to copy/delete/rename/move file in file manager.
21	Copy	Press to enter file selecting menu.
22	Timeshift	Press to activate the time shift function. Time shift function allows you to pause live TV and resume the program from the point you left it. While paused, the program is recorded to the internal HDD as long as the space is available. Press Play button to start playback the paused live TV program.. Time shift mode remains active until you press the stop button.
23	Angle	Press to change the view angle during DVD (with multi-angle) playback.
24	Zoom	Press to zoom the image (photo or video).
25	Audio	Press to select an audio track.
26	Subtitle	Press to set subtitle options. You can change the color/size/offset/text encoding of subtitle.
27	Yellow(TTX)	Press to open Teletext OSD if it is available in the broadcasted stream of Digital Terrestrial TV.
28	Blue	Press to open/close USB DVD-rom.
29	Prev	Press to view the previous file / page up.
30	Next	Press to view the next file / page down.
31	Info	Press to display current status. Press during playback, an onscreen display appears showing track number and time elapsed/remaining.
32	OK	Function is available in virtual keyboard. Press OK button to confirm.

33	BACK	Press to return to the previous screen while navigating menus.
34	Vol+	Press to increase the volume.
35	Repeat	Press to set repeat option.
36	Eject	Press to safely remove the USB device.

2.4 First Time Usage

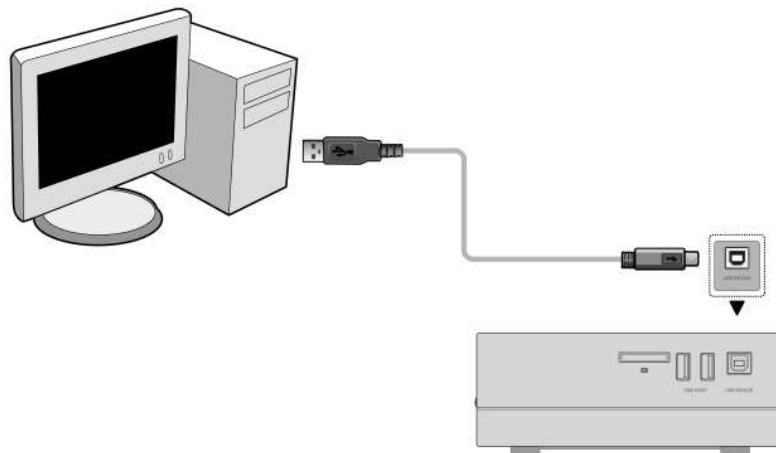
2.4.1 Connection

Connect to Computer

This product can be used as a portable external storage device with its built-in SATA interface and high-speed USB 2.0.

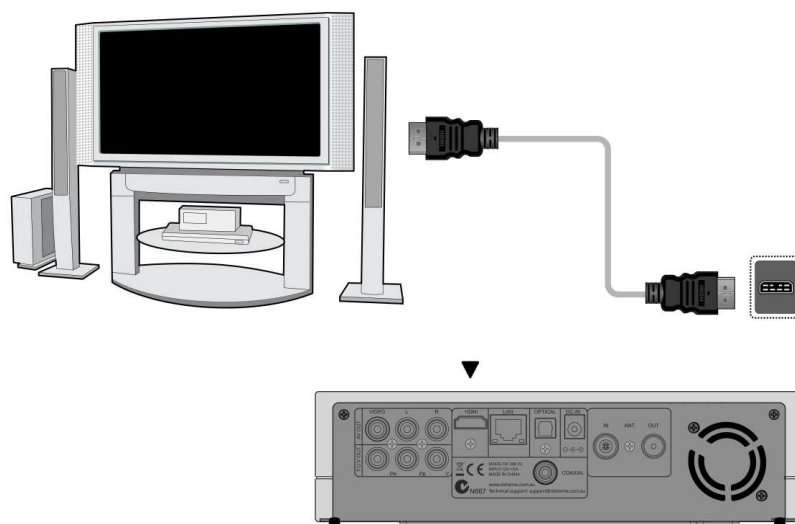
Method 1, Install an internal hard disk → Plug in power adaptor to the player's DC IN jack → Connect this player to PC with the USB2.0 cable → Press U button on back panel of the player.

Method 2, Install an internal hard disk → Power on this player → Connect this player to PC with the USB2.0 cable.



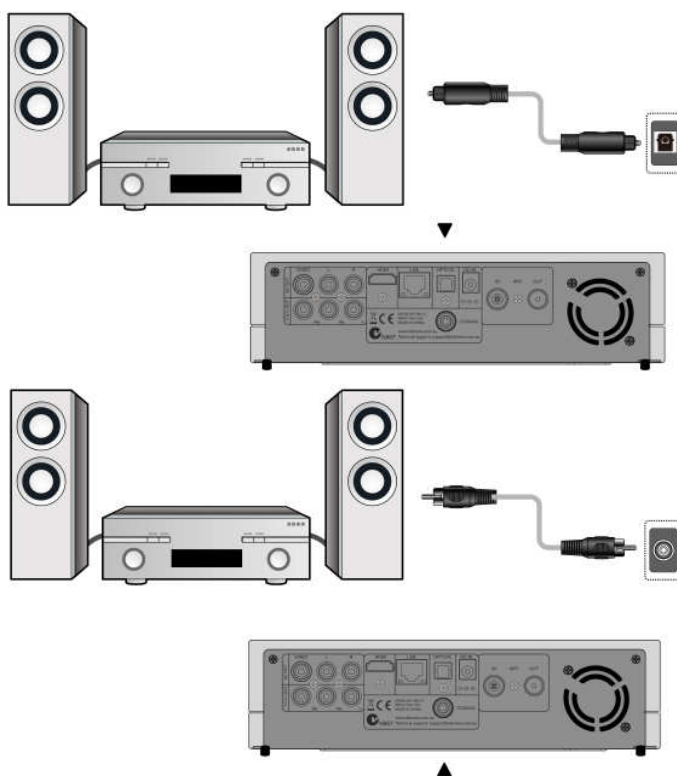
connection the TV

Depending on the jacks on your TV, select the connection mode. We suggest you to use HDMI output (High Definition, up to 1080p). Picture quality will be improved compared to using the component video output (use Y/Pb/Pr OUT jack) or the composite video output (Standard Definition, use A/V OUT jack).



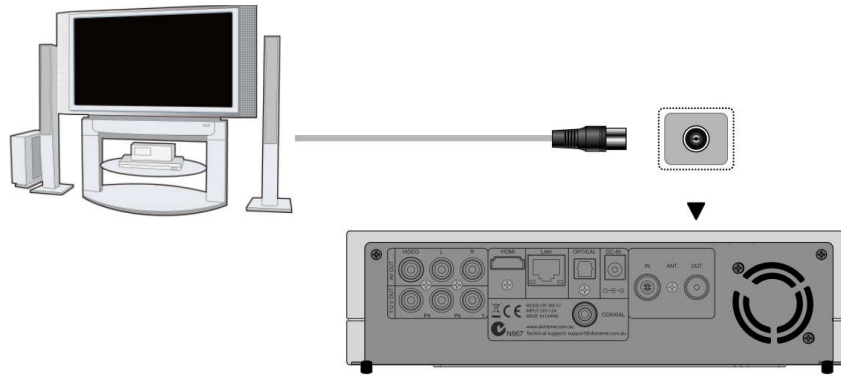
Digital Audio Device connection

Except for HDMI jack, this player can output digital audio to amplifier through SPDIF coaxial or optical jack. Please refer to '**3.1.6 Changing Audio settings**' for more details.



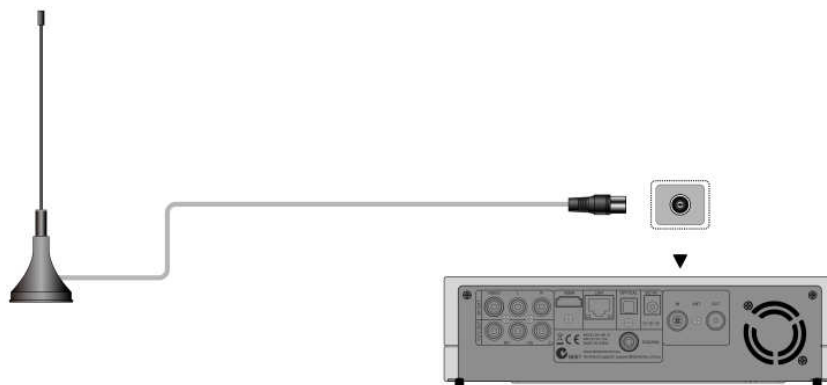
DVB-T signal output

The player can loop out the DVB-T signal to other TV receiver device by following steps.
 Plug in power adaptor to the player's DC IN jack → Connect a TV aerial to the ANT. / RF IN socket → Follow the picture and plug a TV cable to the ANT. / RF OUT socket then plug the cable to a TV or other TV receiver.



DVB-T signal input

Follow the picture and plug a TV Aerial to the ANT. / RF IN socket;



2.4.2 Menu language

The system language of this player can be set to English or other languages. Change the language you wish via **Setup** → **System** → **Menu language**, the selected language will take effect immediately.

2.4.3 HDD Format

For users who would like to install a new SATA HDD into the player, firstly you need format the hard disk on the player before usage. Otherwise many functions can't be used, such as BT download, Transmission.

You can format your HDD via **Setup** → **System** → **Format** menu. A password needed when you try to format the HDD, please refer to '**3.1.6 MISC**' for more details about the password.

Note:

HDD format will remove all data stored on the hard disk drive. Please be careful and backup your data in advance!

3 Main Functions

3.1 Setup

The Setup menu allows you to personalize and configure the preferences for your player.

- Select the Setup icon on the home screen, or press **Setup** button on the remote control.

- Use the **Left/Right** navigational buttons to select an option, and then press **OK**.



There are six setup options, including **System**, **Audio**, **Video**, **TV&REC**, **Network** and **MISC**.

3.1.1 Changing System Settings



Option	Description
Menu Language	Select to choose the OSD (On-Screen Display) language.
Text encoding	Select to set the text encoding option (subtitle display)
Change system font	Select to change system font. (Create a folder named "Resource" in the root directory of your USB or HDD, rename your font as 'font.ttf 'and then copy it to the folder.)
Change Desktop	Select to change the desktop. (Create a folder named "Resource" in the root directory of your USB or HDD, rename your photo as 'desktop.png 'and then copy it to the folder.)
Time	Select to set system time, you must choose the right time zone before time setting.
DVD Auto-Play	Select to set the DVD Auto-Play.
Screen Saver	Here you can set the timing of screen saver and change screen saver.
DLNA DMR	Digital Media Renderer, can play content received from a digital media controller (DMC) , which will find content from a digital media server (DMS)
DLNA Device Name	Select to name DLNA DMR.
Mini KBD Language	Select to change the language of the mini keyboard.

Scan storage	Set the scan mode of media library.
Format	Follow the on-screen information to format your HDD.
BD Menu	Here you can open the BDMV menu during BDMV folder or BD ISO playback. And BD-J is not supported.
Restore Default	Restore to factory defaults.

3.1.2 Changing Audio Settings



Option	Description
Night Mode	Choose from Off / On / Comfort . If the option is turned on, the audio output volume will be decreased to make you more comfortable.
HDMI Output	Choose from LPCM , and RAW .
SPDIF Output	Choose from LPCM , RAW .

Note: In raw mode, Dolby TrueHD, Dolby Digital Plus , Dolby Digital, DTS sound can be by passed to the HDMI TV or Digital amplifier.

Due to the bandwidth requirement, Dolby TrueHD and Dolby Digital Plus sound only can be by passed through HDMI cable, and the TV system must also be up to 720p or above.

3.1.3 Changing Video Settings



Option	Description
Aspect Ratio	Pan Scan 4:3: Display a wide picture on the entire screen and cuts off the redundant portions. Select when a standard 4:3 TV is connected. Letter Box 4:3: Display a wide picture with two black borders on the

	<p>top and bottom of 4:3 screen. Select when a standard 4:3 TV is connected.</p> <p>16:9/16:10: Compress the image to convert the whole image. Select when a 16:9/16:10 TV is connected.</p>
TV SYSTEM	<p>Select to adjust TV Type and video output resolution. This setting depends on your regional location. Include:</p> <p>NTSC – United States, Canada, Japan, Mexico, the Philippines, South Korea, and Taiwan.</p> <p>PAL – Europe, Greenland, parts of Africa and South America, the Mideast, China, India, Australia, and Indonesia.</p>
1080p 24Hz	<p>Choose this option to enable or disable 1080P 24HZ support. A TV set with 1080P 24HZ (24P) mode is needed.</p>
Plasma Mode	<p>Help to protect your plasma TV by reducing the level of brightness.</p>
Deep Color	<p>Help to perform more detailed level of color depth, make continuous color change smoother. You can get more vivid color effects. A TV set with deep color support is needed.</p>
Screen Size	<p>Adjust the video output size according to the size of TV screen. Press Left/Right button to adjust the width of the screen, and Up/Down button to adjust the height of the screen. And press Zoom button to fit the screen size you have set during video playback.</p>

3.1.4 Change TV & REC Settings



Option	Description
TV Region	Select to set the region for Digital Terrestrial TV
Channel Scan	<p>In AUTO SCAN mode, the system will automatically scan for available DVB-T TV channels.</p> <p>In MANUAL SCAN mode, you can select the CH number, Bandwidth, and Input Frequency. Use the navigational and numerical buttons on the remote control to select or input. Press the Next button to start scanning.</p>
Channel Sort	Select to sort channel by Logical channel number or Channel Name.
REC Device	Select to set device to restore the recorded files.

REC priority	Select to set the priority between Manual recording and Schedule recording .
---------------------	--

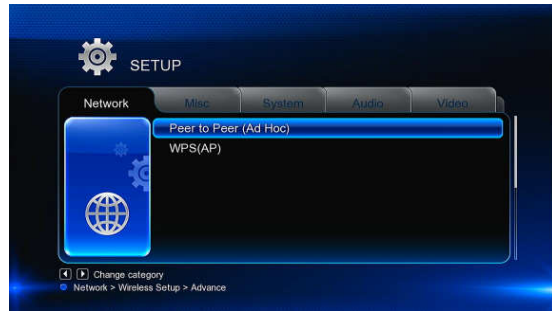
3.1.5 Change Network Settings



Option	Description
Wired Lan Setup	<p>DHCP IP (AUTO) Select to obtain IP address automatically.</p> <p>FIX IP (MANUAL) Select to manually input the IP Address, Subnet Mask, Default Gateway, and DNS Server IP Address.</p>
Wireless Setup	There are detailed introductions following this form.
PPPOE Setup	With an ADSL account and password, system can obtain IP address and connect to internet automatically based on PPPOE protocol.
BT	Please refer to ' 3.10 BT download ' for more details.
Transmission	Please refer to ' 3.11 Transmission ' for more details.
NAS Mode	Please refer to ' 3.13 NAS ' for more details.
FTP	Configure your desired login User Name and Password.
UPnP Server	This player can work as an UPnP Server, all media files stored on external HDD can be found by a UPnP client.
Host Name	Select to key in your desired host name to be seen in your network.

Wireless Setup

There are 3 modes for you to select, **Infrastructure (AP)** and **Peer to Peer (Ad Hoc)** and **WPS (AP)** mode. Follow the prompting message on the screen and press **Red** button to choose **Peer to Peer (Ad Hoc)** or **WPS (AP)** mode.



Infrastructure (AP)

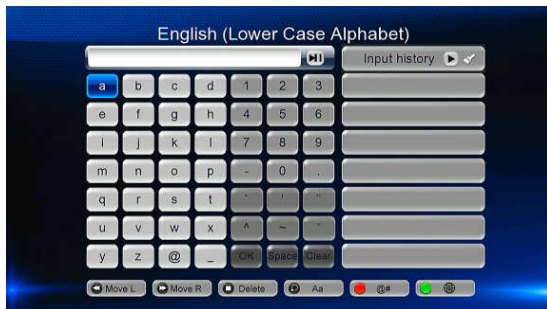
Infrastructure mode is used to connect computers with wireless network adapters, also known as wireless clients, to an existing wired network with the help from wireless router or access point. Please follow steps below to configure your wireless network.

Step 1, Scanning AP (Access Point) in your network

Follow the on-screen information and press the **Zoom** button to select **Infrastructure (AP)** mode and update the access points list, and all SSID will be displayed on the screen.

Step 2, Input WEP / WPA key.

Press **OK** to input encryption keys via the virtual keyboard, **OK** to confirm and to start testing the connection.



The testing process will take a while, please be patient to wait. If the test is ok, the network information (Profile Name, IP address, Subnet Mask, Gateway, etc.) will be displayed on the screen.

Peer to Peer (Ad Hoc)

Peer to Peer mode, which is also called Ad Hoc mode or computer-to-computer mode, is used to connect wireless clients directly together, without the need for a wireless router or access point.

WPS (AP)

WPS, Wi-Fi Protected Setup, is used to connect a wireless router directly, without searching SSID and inputting password. In this mode, you just need to configure the parameters of your router which support WPS function. There are two modes for you to select, PBC mode and PIN mode.

PBC: Press WPS button or select the button mode on your router → Select the **PBC** mode on this player to start testing, the connection process will take a while.

PIN: Input the pin code in the configuration menu of your router → Select the **PIN** mode on this player to start testing, the connection process will take a while.

3.1.6 Miscellaneous



Option	Description
Version Info	This tab shows you information about the software installed and about the material components of your player.
Network Info	This tab shows you information about your network, MAC Address, IP address Gateway, Subnet.
Parental control	Here you can lock TV channels. A password needed when you try to enter this menu, please refer to ' 3.1.6 MISC->Password ' for more details about the password.
HDD spin down	Set the HDD to Sleep Mode.
USB Upgrade	Please refer to ' 3.16 Firmware Upgrade ' for more details.
Pin Protection	To prevent read and write HDD by asking for a password. Please refer to ' 3.1.6 MISC->Password ' for more details about the password.
Password	Change the password. The default password is '0000'. Press the numerical buttons to input, and the OK button to confirm.

3.2 DTV

In this menu, you can watch and record Digital Terrestrial TV programs, or have the time shift function. To enter the DVB-T TV mode, select the **DTV** icon on the main menu.

3.2.1 Watching DVB-T Programs

DTV/Radio

- Choose the select TV programs or broadcasting stations.

Channel List

- Press the **OK** button when watching TV programs and the channel list where you can see the channel number and name will be displayed.



- To get the favorite channel list, press the Prev / Next button in this menu.

Info Bar

- Press the **Info** button when watching TV programs, an info bar will be displayed to show the channel information.



There're 5 strings displayed on the bar. Taking the info bar in the above photo for example:

9+ – Stands for TV rating;

ENG – Stands for the voice language;

SS – Stands for subtitle;

TT – Stands for Teletext;

576 – Stands for resolution (SD - Standard Definition, HD – High Definition).

When there is no string in the bar, relevant option is unavailable.

Electronic Programming Guide

- Press the **EPG** button when watching DMB-TH TV programs, the Electronic Programming Guide will be displayed. Here you can get the program list of a whole day.



Teletext

- If the broadcasted stream supports Teletext, press the **TTX** button to enter the Teletext menu.

Subtitle List

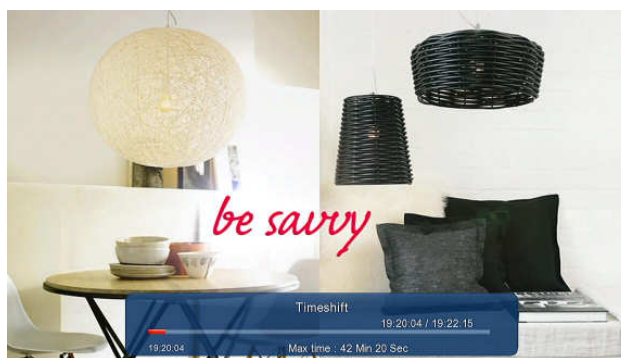
- Press the **subtitle** button when watching DMB-TH TV programs, the Subtitle List menu will be displayed.

One Touch Recording

- Press **REC** button to start the recording, recording files are automatically stored in a folder named REC by default. Press **REC** repeatedly to set one touch recording length ,30 MIN. / 60 MIN. / 90 MIN. / 120 MIN. / 180 MIN. / 240 MIN. / Off.

Time Shifting

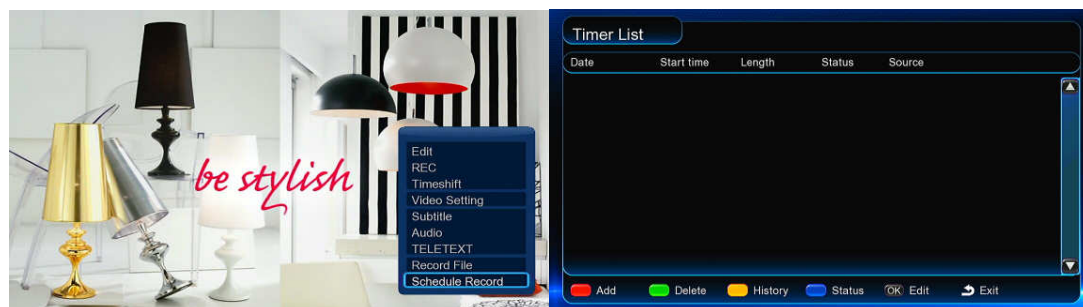
- Time shift function allows you to pause live TV and resume the program from the point you left it. While paused, the program is recorded to the internal HDD as long as the space is available. Press the **TIME SHIFT** button to active time shift function.



- Press **PLAY** button to resume the program. Time shift mode remains active until you press the **STOP** button. **Pause/FF/FR/PREV/NEXT** button is available while time shift mode.

3.2.2 Schedule Recording

To enter timer list, press **Menu** button when watching TV programs, and select **Schedule Recording** in the option menu. Here you can **add**, **edit**, **delete** recording schedules, **change** all schedule status and **view** schedule recording history.



Create a New Schedule

- In timer list, press the **RED** button on the remote control to add a new schedule recording,

then the schedule setting screen appears.



- Use the **Left /Right** button on the remote control to move between fields and press the up / down button to adjust each setting.

Source	Select the video source or TV channels for the recording.
Start Time	Enter the date and time of the recording.
Length	Enter the length of the recording
Preview	This small preview window will show the current program of the selected channel.

3.2.3 Channel Edit

To enter channel edit menu, press **Menu** button when watching TV programs, and select **Edit** in the option menu.



In this menu, you can **Lock, delete, rename, skip, swap** TV channels and also edit your favorite TV list. Use **Up/Down** buttons to select and modify the settings.

Note: A password is needed when you try to enter this menu. Please refer to '3.1.6 MISC' for more details about the password.

3.3 Browsing Files and Media Playback

3.3.1 Browse via File Manager

The **File Manager** allows you to browse and play music, photo and movie files stored on an internal HDD, external USB device, memory card and network.



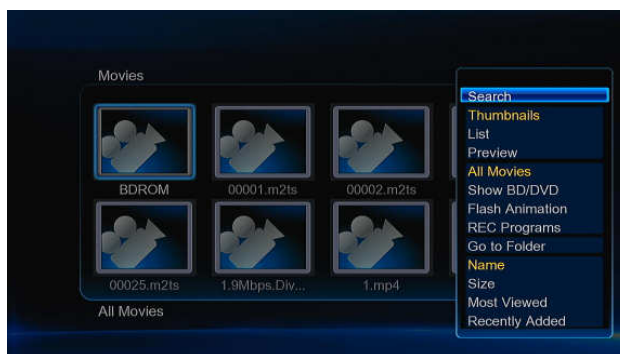
In **File Manager**, press **Menu** button, you can choose different review mode, **Thumbnails**, **List** or **Preview**.

3.3.2 Browse via Media Library

In **Movie/Photo/Music** interface, only supported files will be displayed. Please refer to Appendixes in chapter '4.1 Specifications' for more details about the supported files.



In media library, press **MENU** button to display the option menu, you can get following functions through the option menu.



Function	Description
Quick-Search	Choose the Search option in the option menu; you can search for a media file by filter media library to locate the specific media file.
Review Mode	Choose a review mode among Thumbnails , List , Preview from option menu.
Sorting Mode	Choose to sorting files by Name , Size , Most Viewed , Recently played or Recently Added from option menu.
Flash Animation	Choose to display .swf files in media library.

Show DVDs	Choose to display DVD IFO, BD MV and ISO files directly in media library.
Go to Folder	Choose to locate the file in file manager.
Folder Directory	Different mode to view photos in photo library.
Leaf Folder View	
Date View	

3.3.3 Playback Option

Press **Menu** button during playback, you can get following functions through the Option menu.

Function	Description
Title menu	Useful for DVD IFO and ISO playback.
Root menu	Title menu, return to the main menu of entire disc. Root menu, return to the root main of each title.
Video Setting	Adjust Brightness, Contrast, Saturation and Hue .
Slide Timing	With these three options, you can choose the Interval, Transition effect and background music during the photo playback.
Slide Transition	
Select Music	

3.4 A/V Streaming via Network

To stream your media files shared on the home network,

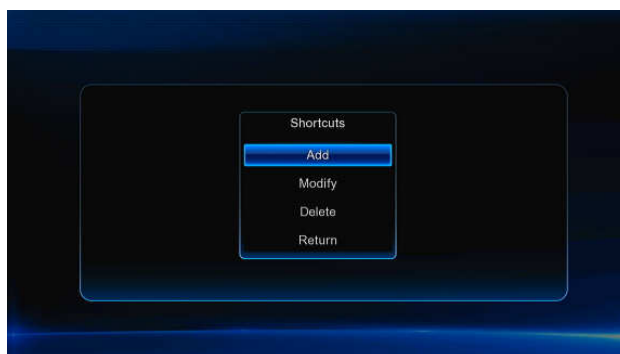
Step 1, Enter into **Setup**→**Network** menu, connect your player to your home network.

Step 2, Enter into **File Manager**→**Network**, find your PC the workgroup list. Then you can select and play the shared media files that you want to browse.



Due to different network conditions, sometimes the workgroup might not be accessed or shown in the list. You can set '**Specific File Server IP**' and access it from '**My_Shortcuts**'.

- Press the **Red** button and a popup menu appears.



- Select **Add** to open a popup menu where you can input **Label, Net User ID, Net Password, Domain, Host Name, and Specific File Server IP.**

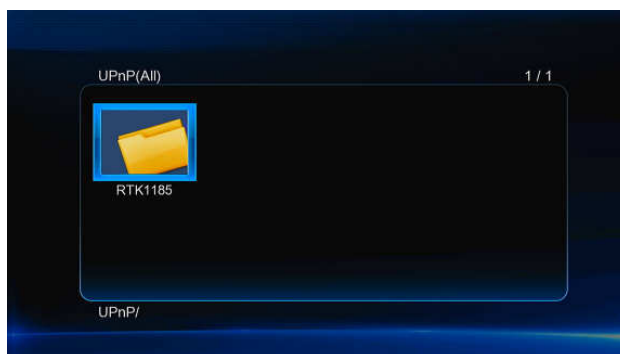
3.5 A/V Streaming via UPnP-server

A built-in UPnP (Universal Plug and Play) client has been integrated on the system, which enables the player to auto-detect UPnP Media Servers on the network to browse and stream media files from them. There're a lot of free and commercial UPnP Media Server software, such as Windows Media Connect, Windows Media Player 11, XBMC Media Center (Linux/Mac/Windows), MediaTomb (Linux), etc. Please install one of them on your computer, and share the media files through it.

To stream your media files shared through a UPnP server,

Step 1, Enter into **Setup**→**Network** menu, connect your player to the home network.

Step 2, Visit **Files Manager**→**UPnP** menu on the player, selects the UPnP-server, and then you can browse the media library shared by UPnP server.

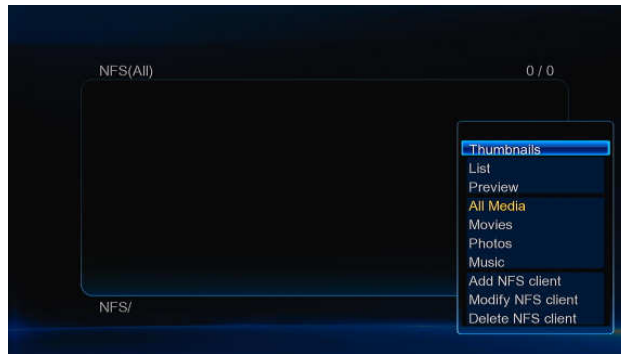


3.6 A/V Streaming via Linux NFS server

This system enables you to browser the media files shared on Linux NFS Server.

Step 1, Enter into **Setup**→**Network** menu, connect your player to the home network.

Step 2, Visit **Files Manager**→**NFS** menu, press **Menu** button and a popup menu appears.

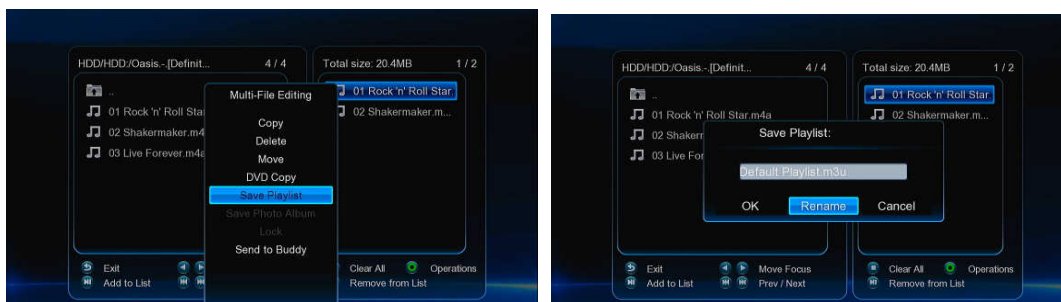


You can then Add/Modify/Delete a NFS server's shortcut. Select **Add** to open a popup menu where you can input the **NFS Server's IP** and the desired folder **destination**. Then you can select and play the shared media files on the Linux NFS server.

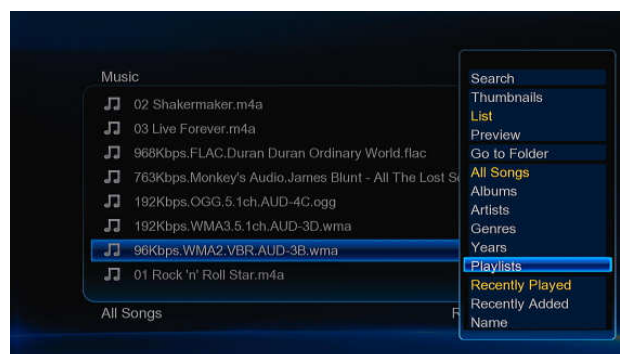
3.7 Music playlist & Photo Album management

Step 1, Enter into **Music/Photo** interface.

Step 2, Press **Copy** button to enter file selecting menu, follow the on-screen information to finish creating music playlist or photo album.



Step 3, Enter **Music/Photo** interface, press **Menu** button and choose **Playlists/ Albums** to view your music playlists/ photo albums.

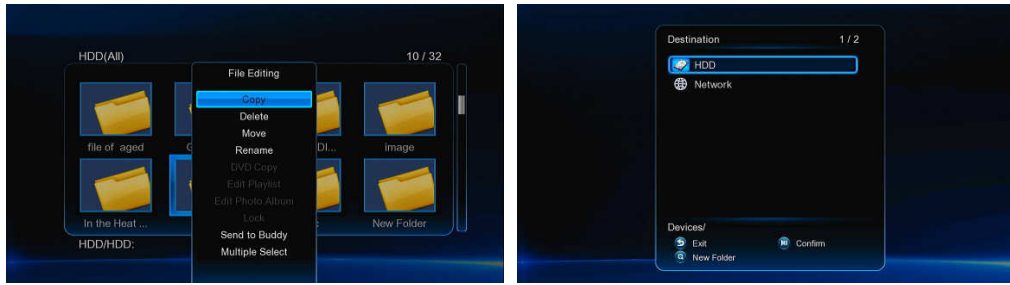


3.8 File Copy/Delete/Move/Rename

Step 1, Enter into **File Manager**.

Step 2, Locate the file or folder which you want to copy/delete/move/rename.

Step 3, Press **Edit** button to enter file editing menu, or press **Copy** button to enter file selecting menu, then follow the on-screen information to finish file copy/delete/move/rename.



3.9 Internet Media

This feature is an additional function. All contents and services under this feature are provided by third-party service providers, our company does not offer any contents and services of this feature and is not responsible for any contents and services provided under this feature. Our company is not responsible for any operational stability of the contents and services. For example, if you cannot access certain web site for video streaming or news broadcast, or the content of a web site has been changed etc, are all responsible and controlled by the third-party service providers. If you find that these features cannot operate properly, please contact our customer service or visit our company website to obtain the relevant information.



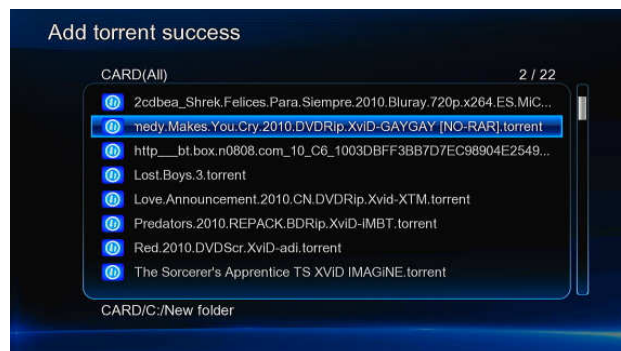
3.10 BT Download

To use BT download,

Step 1, Enter into **Setup**→**Network** menu, connect your player to internet.

Step 2, Enter into **Setup**→**Network** menu, turn on **BT**.

Step 3, To Add a torrent, locate your torrent file in file manager menu, then press **OK** button to add the torrent to start downloading. You can also add a download task via remote management, Please refer to '**Remote Management**' for more details.



Select the **BitTorrent** icon on internet media menu, you can see the status of torrents

download progress and configure the BT download settings in this menu.

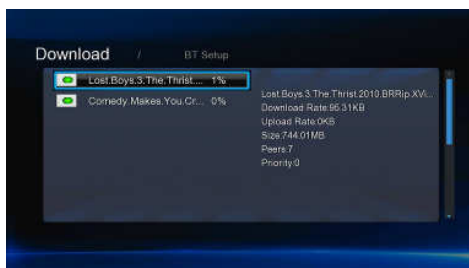
Download Menu

After add the BT torrent files, the download progress can be displayed in this menu.



The following buttons can be used under this menu.

Button	Function
Up/ Down	Move cursor up / down.
Play/Pause	Press to start/pause download.
Stop	Press to stop the download.



BT setup Menu



In the **BT Setup** menu, you can configure the following settings. Use **Up/Down** and **OK** to change the settings.

- Set the maximum download rate.
- Set the maximum upload rate.
- Set the idle hours to start the next download automatically.
- Set the seeding hours.
- Set to delete the finished torrent files automatically or not.
- Set the maximum number of simultaneous download tasks.

3.11 Transmission

Transmission is a free, open-source and cross-platform BitTorrent client. To use this function,

Step 1, Enter into **Setup**→**Network** menu, connect your player to internet.

Step 2, Enter into **Setup**→**Network** menu, turn on transmission.

Step 2, Launch a web browser such as Internet Explorer or Firefox, and at the address bar, key in <http://192.168.50.196:9091> where 192.168.50.196 is the IP address of your product.

You need format the external hard disk on the player to use transmission.

3.12 Web Browser

The following buttons can be used during webpage browsing.

Button	Function
Red	Press to enter navigation mode or normal mode. In normal mode, only mouse can be used to move the cursor. In Navigation mode, remote control also can be used to move the cursor.
Green	Press to pop up the address bar.
Navigation buttons	In Navigation mode, press navigation buttons to move cursor. In normal mode, press Up/Down to move to the top/bottom of the webpage.
OK	Press to enter selected hyperlink while in navigation mode.
Play	Press to load the web site when the cursor stays on the address bar.
Return	Return to exit web browser.

3.13 NAS function

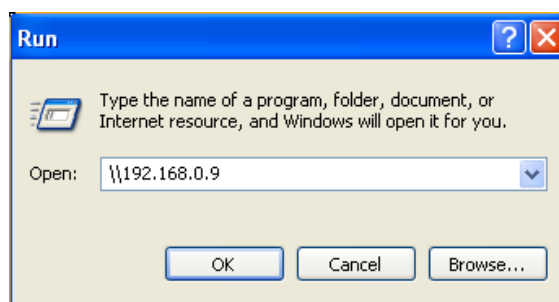
This product functions as a NAS (Network Attached Storage) device when it is attached to the home network. This feature allows users to store and retrieve large amounts of data from their own local network.

Step 1, Enter into **Setup**→**Network** menu, connect your player to home network.

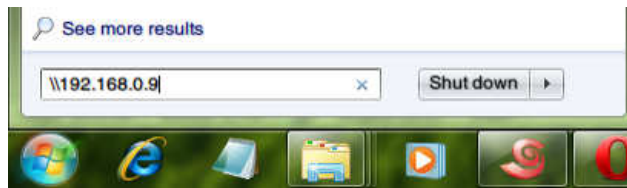
Step 2, Enter into **Setup**→**Network** menu, turn on **NAS Mode**.

Step 3,

On Win XP, key in [\\IP Address](#) or [\\Host name](#) in the Run window (click Run in the start menu) or in the address bar of a web browser, for example Internet Explorer on your PC (if the IP address of the product is 192.168.0.9, please key in [\\192.168.0.9](#)), and click OK or press the Enter button on the keyboard.

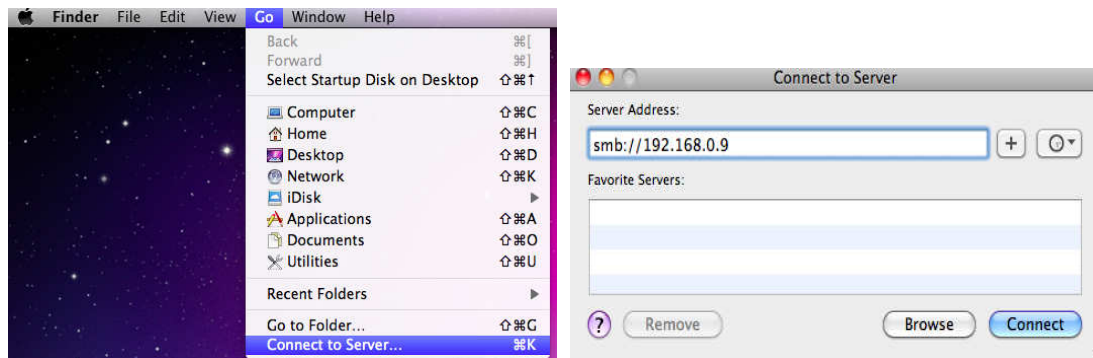


On Windows Vista or Windows 7, please key in \\IP Address or \\Host name at the search bar, then press the Enter button on the keyboard.



On Mac,

Finder→Go→ Connect to Server, key in smb://IP Address or smb://Host name and click Connect.



You can then manage the files stored on hard disk and USB drive that connected to the player.

3.14 FTP Server

This product can also function as a FTP Server when it is attached to your home network via wired or wireless connection.

Step 1, Enter into **Setup→Network** menu, connect your player to home network.

Step 2, Enter into **Setup→Network** menu, configure the login User Name and Password.

Step 3, Enter into **Setup→Network** menu, turn on FTP.

Step 4, Open the FTP application and login on your PC. After login is successful, you will be able to upload/download files via FTP Server.

3.15 Remote Management

This product comes with a unique remote management feature that allows user to remotely access from the internet to operate the following functions on the product via a built-in HTTP server.

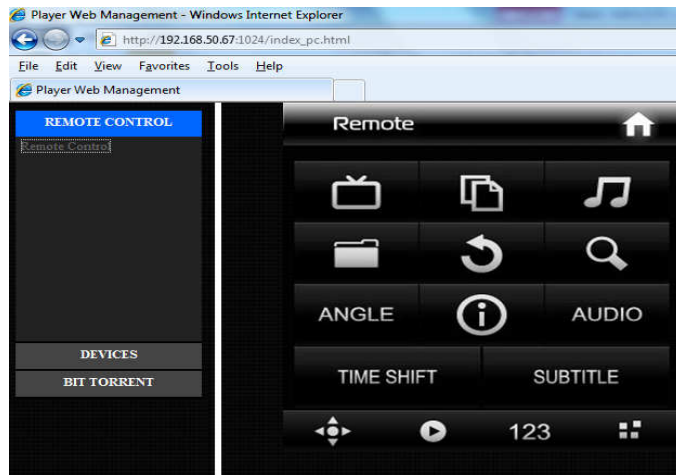
To access via HTTP server in your local network,

Step 1, Enter into **Setup→Network** menu, connect your player to home network.

Step 2, Launch a web browser such as Internet Explorer, Firefox or Safari, and at the address bar, key in **http://192.168.0.9:1024** where **192.168.0.9** is the IP address of your product.

Remote Control

Using the on-screen virtual remote control and use it like you would with the hand-held



BitTorrent management

View and manage your BitTorrent tasks remotely over the internet.



3.16 Firmware upgrade

The firmware is the operating system (OS) installed on the device. Firmware upgrades can bring new features, improvements and debugs.

Method 1:

Step 1, Copy 'install.img' to the root directory of a USB stick, and connect it to the USB HOST port of the player.

Step 2, Press and hold the **U** button on the back panel, and do not loosen.

Step 3, Plug the power cable into the DC IN jack, wait for about 5 seconds or more, and then loosen your finger on the **U** button; Firmware installation will start.

Method 2:

Step 1, Copy 'install.img' to the root directory of a USB stick, and connect it to the USB HOST port of the player.

Step 2, Enter **Setup** → **Misc** menu, select **USB Upgrade**, firmware installation will start.

4 Appendixes

4.1 Specifications

I/O INTERFACES SUPPORTED:

- 3.5" SATA HDD
 - USB 2.0 Device port
 - USB 2.0 HOST port (compatible to USB 1.1)
 - Memory Card slot (supports SD/MMC)
 - Composite (CVBS) A/V jack
 - Component Y/Pb/Pr jack
 - ANT.RF IN/OUT socket
 - HDMI V1.3 interface
 - S/PDIF Optical & Coaxial jack
 - DC-IN 12V 2A
-

NETWORK FEATURE

- 10/100/1000Mbps Auto-Negotiation Ethernet
 - 802.11b/g/n WLAN, up to 300Mbps (supported by optional WLAN USB Adapter)
-

FILE SYSTEM SUPPORTED:

- FAT/FAT32/NTFS/HFS+/EXT3
-

CONTENT FORMATS SUPPORTED:

- AVI/MKV/TS/MPG/MP4/MOV/VOB/ISO/IFO/DAT/WMV/RM/RMVB, resolution up to 720p/1080i/1080p
 - MP3/OGG/WMA/WAV/FLAC/APE
 - HD JPEG/BMP/PNG
-

VIDEO CODECS SUPPORTED:

- MPEG-1
 - HD MPEG-2
 - HD MPEG-4 SP/ASP/AVC (H.264)
 - WMV9 (VC-1)
 - RealNetworks (RM/RMVB) 8/9/10, up to 720p
-

AUDIO CODECS SUPPORTED:

- MP2/3, OGG Vorbis, WMA Standard (DRM, and Advanced Profile not supported), PCM, LPCM, RA, DTS, Dolby Digital, Dolby Digital Plus, Dolby TrueHD)
-

SUBTITLE FORMATS SUPPORTED:

- SRT, SMI, SSA, SUB, IDX+SUB
-

Note: The specifications and design of this product are subject to change without notice.

4.2 Frequently Asked Questions

Question 1. When I try to disconnect the USB device, I keep on getting "The device

‘Generic volume’ cannot be stopped right now. Try stopping the device again later.” message, what should I do?

Answer:

Close any program that might be accessing data on the player, including Windows® Explorer. If it does not work, close all programs and wait for another 20 seconds, then try the green arrow icon again. If it still does not work, you should shut down the player and disconnect the USB cable.

Question 2. I find new file names and folder names that I never created before or they have strange gibberish names.

Answer:

Most likely, the player’s file allocation table (FAT) has been corrupted. This might be due to the player shutting down (due to low battery power) while reading or writing to your computer by the USB connection. Windows and Macintosh often write extra files to the hard disk such as finder.def or System volume info. These are normal and will not do any harm to the player.

Question 3. I used my player to transfer files back and forth between different computers. Will defragmenting the player hard disk do any harm to it?

Answer:

Defragmenting the player hard disk may be useful after having transferred many files to and from the player. It is never harmful to use the defragment on the player. Make sure no other programs are running while using the Windows® defragment utility. Make sure you have connected the player with the external power adapter during this procedure.

Question 4. My files have disappeared from the player.

Answer:

Make sure that you browse your files via the correct browser mode which means correct filtered views such as Photos, Music, or Movies.

Question 5. During power on, why does the TV will have a short flashing, blue screen or screensaver?

Answer:

This is normal, when the system initializes, it will setup the corresponding parameters so it can output the correct video signal to the TV, during the initializing time, the TV will receive incorrect signals or the signals will not be stable and will cause the TV screen to flash, some TV’s will treat this as no signal, and will display a blue screen or screensaver.

Question6. Why couldn’t the player find the hard disc?

Answer:

You need format the hard disk on the player before usage. If hard disc failure occurs in file manager, please backup your data and format your HDD on the player.

Question7. Why I can’t find my USB drive in file manager?

Answer:

Try to replace a short USB cable or plug in the power cable to your USB drive. You are suggested to plug in one USB drive at the same time.

5 Copyrights and Trademarks

Copyrights

All rights reserved. No part of this manual may be reproduced, or transmitted in any form or by any means, whether by electronically or mechanically, without the express written permission from the copyright holder.

Copyrighted materials, such as software, music files, or movies, are protected by local law, and may not be illegally copied or used without permission from the copyright owner.

Trademarks

Microsoft and Windows are registered trademarks of Microsoft Corporation.

All other trademarks are property of their respective holders.



Manufactured under license under U.S. Patent #'s:5,451,942; 5,956,674; 5,974,380; 5,978,762; 6,487,535 & other U.S. and worldwide patents issued & pending. DTS and DTS 2.0 + Digital Out are registered trademarks and the DTS logos and Symbol are trademarks of DTS, Inc. © 1996-2008 DTS, Inc. All Rights Reserved.



Manufactured under license from Dolby Laboratories. Dolby and the double-D symbol are trademarks of Dolby Laboratories.

6 Warranty

What your warranty *does not* cover:

- Acts of nature, such as fire, static discharge.
- Damage from unauthorized repair, alteration or accident.
- Damage from misuse or neglect.
- A unit that has been modified or incorporated into other products or is used for institutional or other commercial purposes.
- Loss of customer's software, firmware, information, or memory data.
- Improper handling or installation.

7 GPL Statement

This product contains free software which is licensed under the GNU General Public License. After you purchase this product, you may procure, modify or distribute the source code of the GPL/LGPL software that is used in this product.

To obtain a copy of our open source software, please contact our support center and we will provide you with a CD-ROM of the source code that is used, charging only the actual expense

involved. However, please be noted that we can not guarantee the source code, and there is also no technical support for the source code from us.

If you have some technical problem with this unit, please mail to support@dxtreme.com.au
For technical support, we will feedback to you as soon as possible.

For more product information, please visit our website: www.dxtreme.com.au