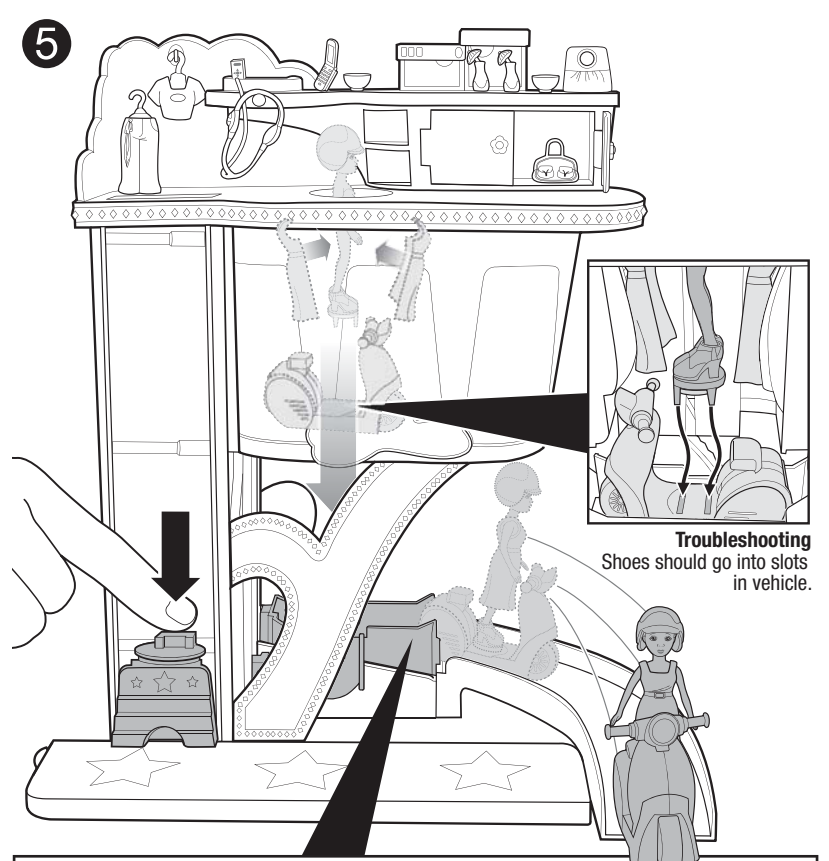
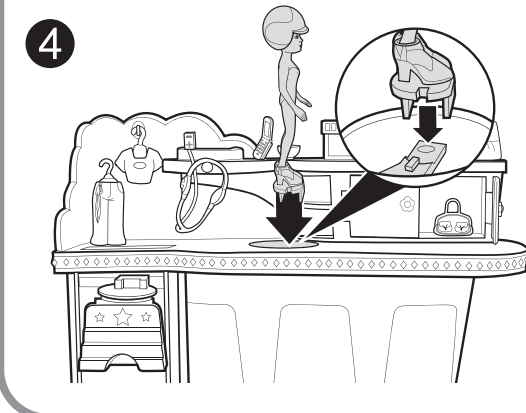
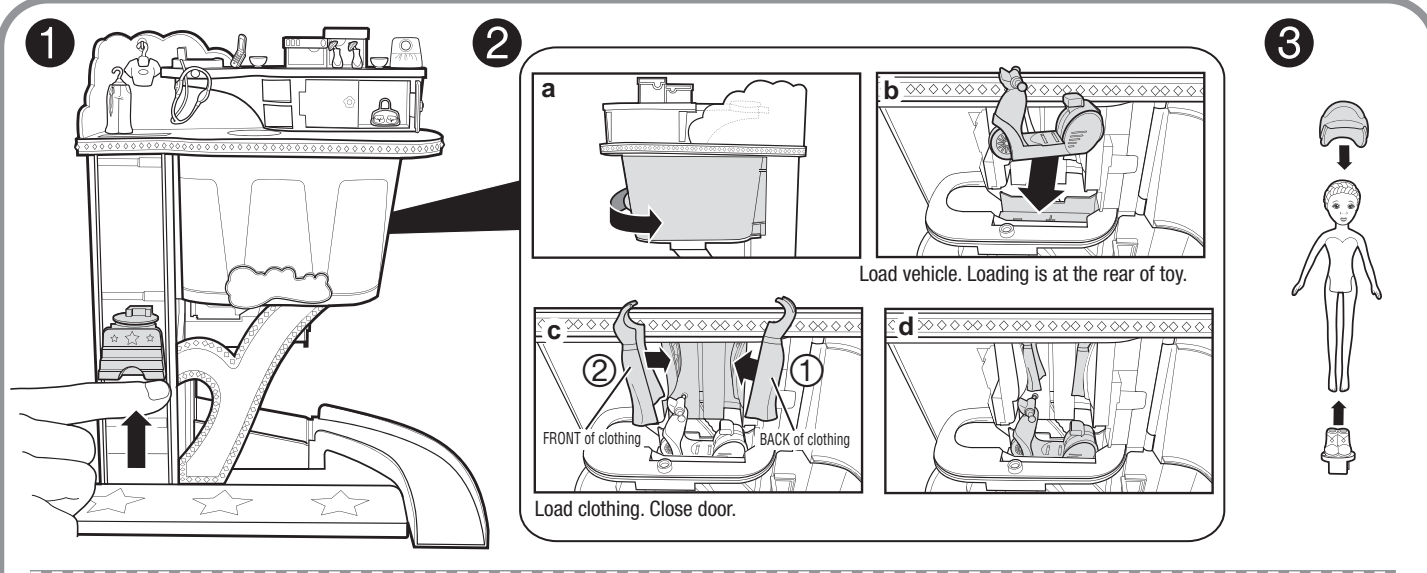
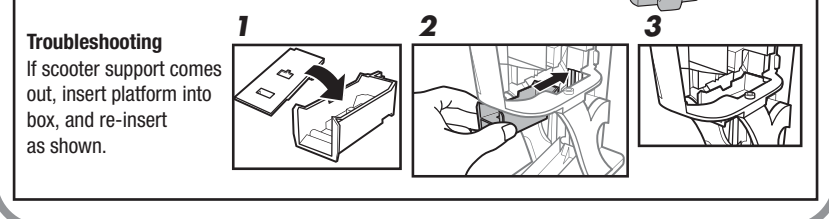
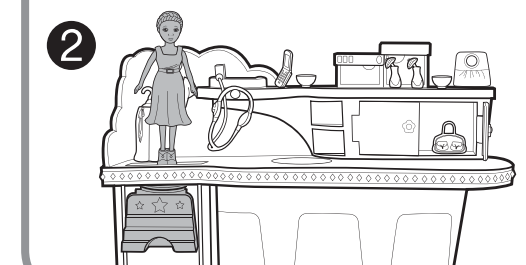
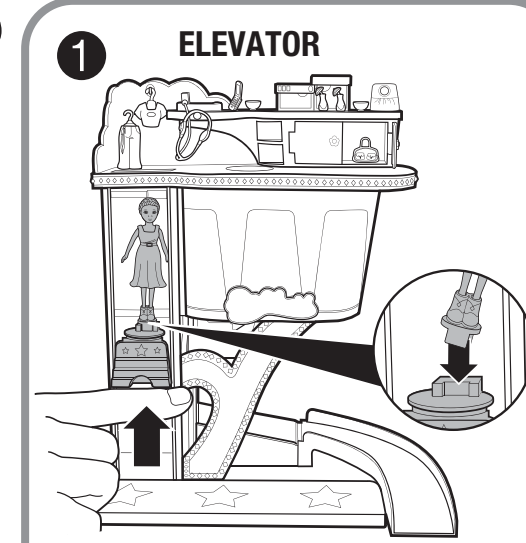


LET'S PLAY!

1



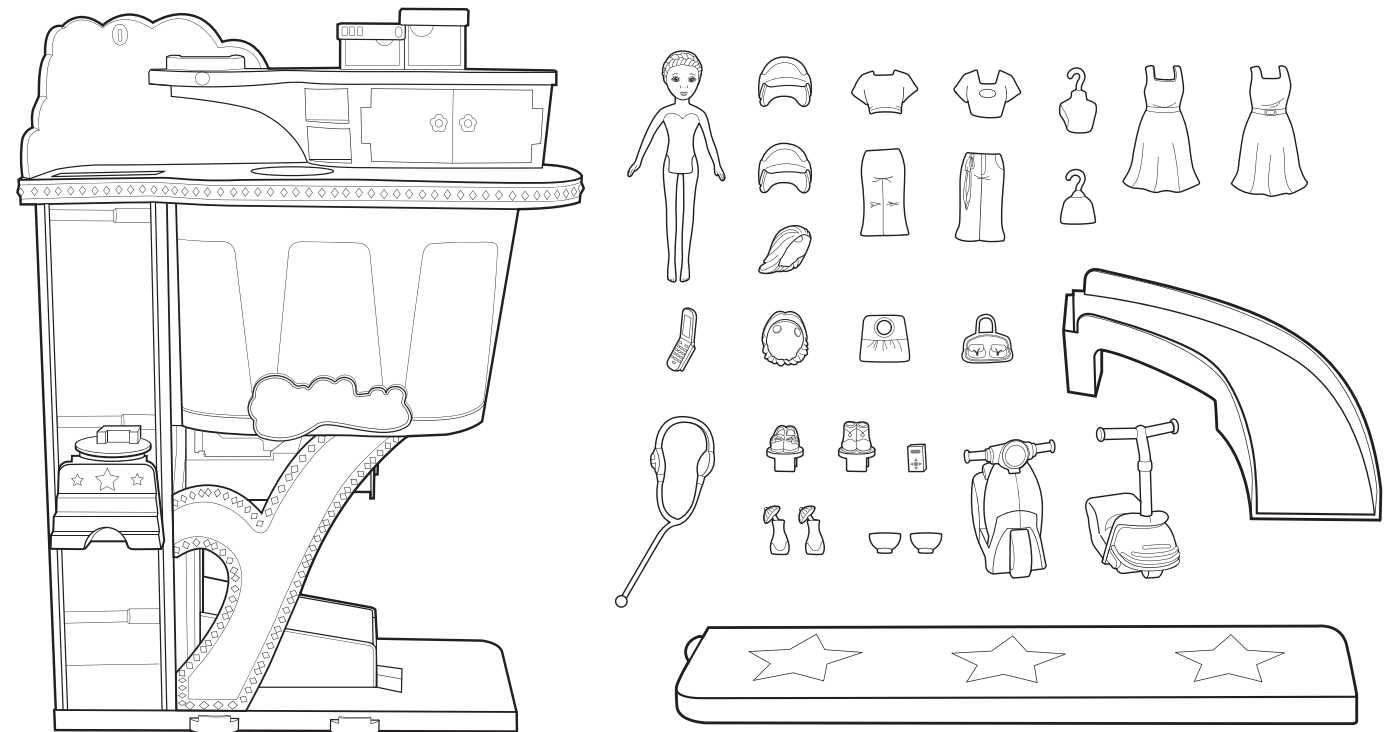
2



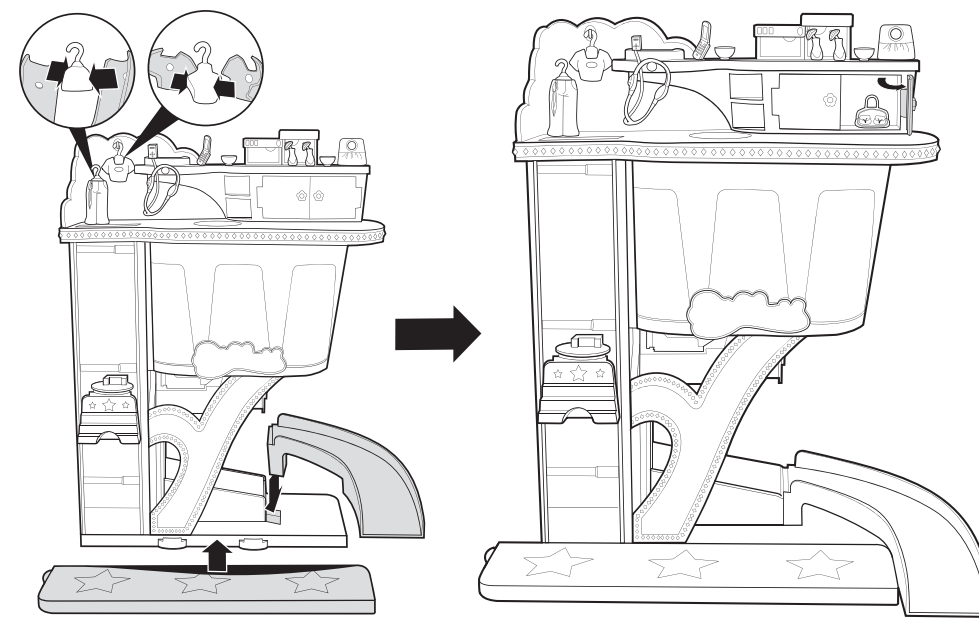
4+ J1687-0920G1

# INSTRUCTIONS

## CONTENTS



## ASSEMBLY



This product contains magnets. Do not use around items that are sensitive to or affected by magnetic fields.

Colours and decorations may vary from those shown.

Please remove everything from the package and compare to the contents shown here.

If any items are missing, please contact your local Mattel office.

Keep these instructions for future reference as they contain important information.

### CONSUMER INFORMATION

Need Assistance? In the US and Canada, [service.mattel.com](http://service.mattel.com)\* or 1-800-524-8697, M-F 8AM - 6PM, ET.  
\*Website in English language only  
[SERVICE.MATTEL.COM](http://SERVICE.MATTEL.COM)

Mattel Canada Inc., Mississauga, Ontario L5R 3W2. You may call us free at 1-800-524-8697.  
Mattel U.K. Ltd., Vanwall Business Park, Maidenhead SL6 4UB. Helpline 01628500303  
Mattel Australia Pty., Ltd., Richmond, Victoria. 3121. Consumer Advisory Service - 1300 135 312.  
Mattel East Asia Ltd., Room 1106, South Tower, World Finance Centre, Harbour City, Tsimshatsui, HK, China.  
Diimport & Diedarkan Oleh: Mattel SEA Ptd Ltd. (993532-P) Lot 13.5, 13th Floor, Menara Lien Hoe, Persiaran Tropicana Golf Country Resort, 47410 PJ. Tel:03-78803817, Fax:03-78803867.  
Mattel, Inc., 333 Continental Blvd., El Segundo, CA 90245 U.S.A. Consumer Affairs 1 (800) 524-8697.

**WARNING:**  
CHOKING HAZARD - Small parts.  
Not for children under 3 years.





# Dress 'n Drive™ Game






## What you need to play:

- 2 or more players
- 2 or more game pieces: use Polly™ dolls or fashions! Choose your favorite piece that came with this toy!
- 1 die (borrow one from a board game you have around the house)

## How to play:

- The youngest player goes first. Play continues clockwise.
- Each player rolls the die to move their game piece around the board.
- If you land on a colored square, follow the color code to see what you should do.
- If you're the first to reach the Finish, then you win!

## Color Code:

-  = Go back 1 square
-  = Move ahead 1 square
-  = Roll the die again
-  = Jump ahead 3 squares
-  = When you land on a star, take the shortcut.



# Start



# Finish

