

DDEChartUpdater V1.3

Copyright (C) 2006, Trading-Tools.com
<mailto:info@trading-tools.com>

User manual

Table of contents

Table of contents	2
Welcome	3
Getting Started.....	4
Main Window	4
Understanding DDE (Dynamic Data Exchange)	4
Adding Symbols.....	5
Options Dialog	6
ASCII File Format Dialog	6
Tutorial	8
Connecting to an Excel Workbook via DDE	8
How to use the DDESPY.EXE utility?.....	11
Registration and Price Information	12
Order Form	13
Contact	15
Disclaimer of Warranty	16

Welcome

DDEChartUpdater allows you to use MetaStock (<http://www.equis.com>) or SierraChart (<http://www.sierrachart.com>) with data feeds that are not supported originally. The program connects to external programs providing (real-time) quotes via Windows DDE.

DDEChartUpdater stores the data in MetaStock or in SierraChart format. The charts of MetaStock/SierraChart will be refreshed automatically.

More features of DDEChartUpdater:

- You can download data from any source in DDE format directly to MetaStock or SierraChart format. This widens the selections of possible data vendors by several orders of magnitude.
- You can use as many data vendors as you want. So you can easily combine the advantages of these vendors by just configuring the DDEChartUpdater.
- Can store quotes in ASCII files and updates them in real-time.

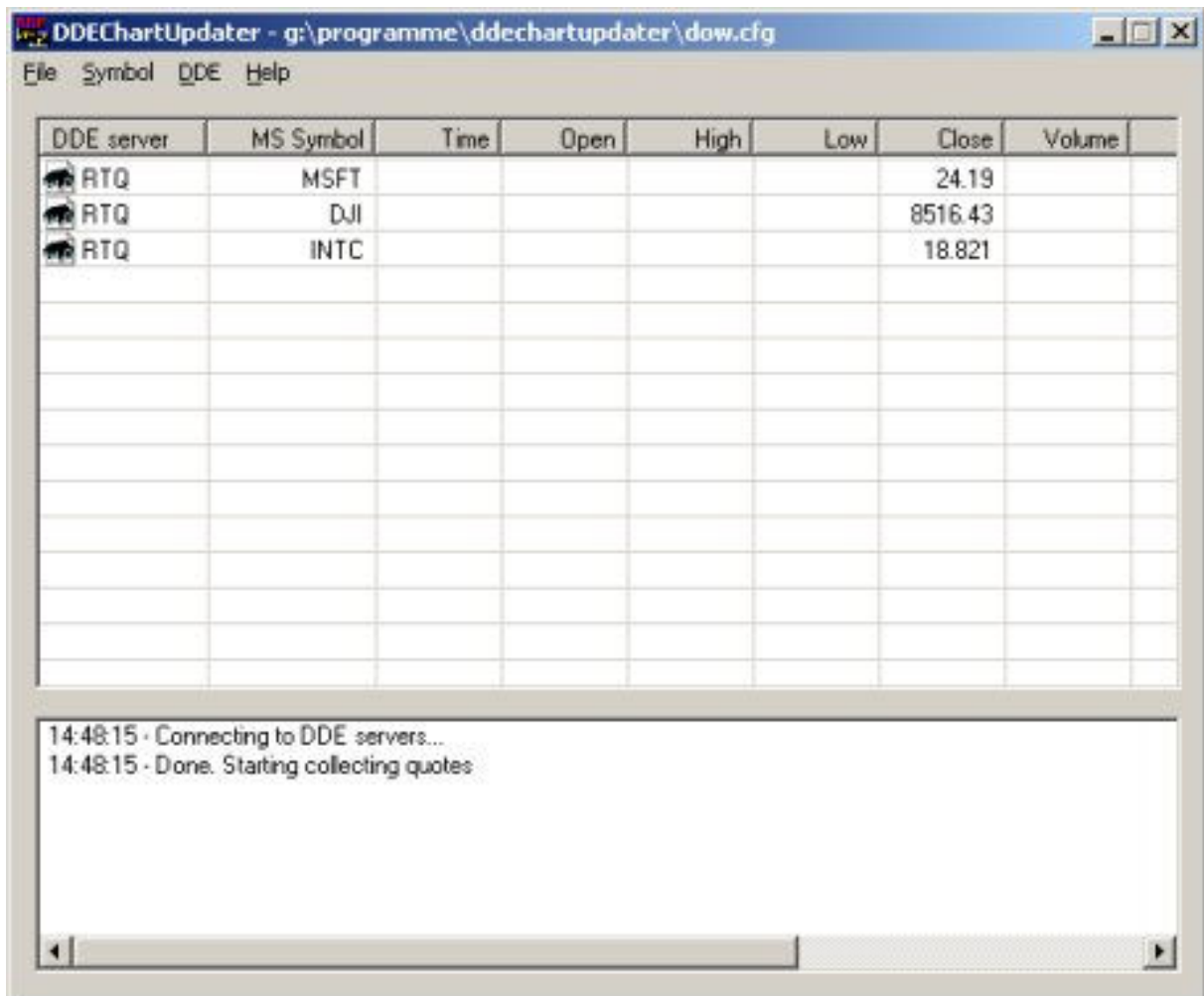
Read the "Getting Started" chapter to get a general idea of DDEChartUpdater.

Getting Started

Main Window

The main window displays all symbols that will be updated via DDE. You can add/remove symbols by using the "Symbol" menu.

An Error log window is displayed on the bottom of the main window. So you are always up-to-date if an error occurred.



The screenshot shows the main window of the DDEChartUpdater application. The window title is "DDEChartUpdater - g:\programme\ddechartupdater\dow.cfg". The menu bar includes "File", "Symbol", "DDE", and "Help". The main area contains a table with the following data:

DDE server	MS Symbol	Time	Open	High	Low	Close	Volume
RTQ	MSFT					24.19	
RTQ	DJI					8516.43	
RTQ	INTC					18.821	

Below the table is a log window showing the following messages:

```
14:48:15 - Connecting to DDE servers...  
14:48:15 - Done. Starting collecting quotes
```

(Main Window of DDEChartUpdater)

Understanding DDE (Dynamic Data Exchange)

Dynamic Data Exchange is a feature of Windows that allows two programs to share data or send commands directly to each other. DDE can be thought of as a direct conversation between two application programs. In most cases, one application is providing some form of data (either text or graphics) to another application. The application that is the source of the data is called the "server" and the application that is receiving the data is called the "client".

Each data item that a server application can provide has a unique identifier consisting of three parts, a DDE Application Name, a DDE Topic, and a DDE Item Name.

The DDE Application Name is almost always the executable filename for the server application (without the .EXE extension). The DDE Topic typically identifies a group or category of data in the server application and each data item that a server can provide has a unique DDE Item Name. Thus, the Application Name, Topic, and Item Name identify the exact source of the data in a server application that is to be linked. (Similar to a telephone number with the three parts: Area Code, Exchange and Number.)

DDE links are always initiated in the client application. The client initiates a DDE link by broadcasting a message containing a DDE Application Name, A DDE Topic, and optionally a DDE Item to all other applications currently running. If a server application is running that can provide the data, it responds to the "DDE initiate" and the Windows operating system opens a "link" between the two applications. Fortunately, most Windows programs that support DDE insulate the user from the low level details of establishing DDE links and simply allow you to specify the Application Name, Topic, and Item Name for a specific piece of data and the link is then automatically established for you by your application program.

Adding Symbols

Click on the "Symbol->Add" menu, to add a new security The "Symbol Configuration" dialog will be displayed.

Symbol Configuration

Stock information

Name MSFT

Symbol MSFT

Periodicity Intraday Interval Tick

MetaStock directory C:\MetaStock

SierraChart directory

ASCII directory

DDE settings

DDE server name RTQ

Time =RTQ|Time|DE519000

Time format of the DDE HHMMSS

Close =RTQ|Close|DE519000

Volume =RTQ|

Automatically calculate open, high, low prices

Open =RTQ|

High =RTQ|

Low =RTQ|

Use this MetaStock/SierraChart/ASCII directory for all securities in this list

OK Cancel

("Symbol Configuration" dialog)

In the first frame you can specify the name and symbol of the security. Also make sure that you select a valid periodicity/interval.

If you do not want to store quotes in SierraChart format you have to set leave the "SierraChart directory" text box empty. (The same applies to the MetaStock and the ASCII directory)

In the second frame you can specify the DDE settings. Click on the "... " button to get a list of topics/items that are currently available. It is important that the external program is running. Otherwise the topic/item lists are empty and you have to enter them manually.

It is very important that you select a valid time format. If the time of the server providing

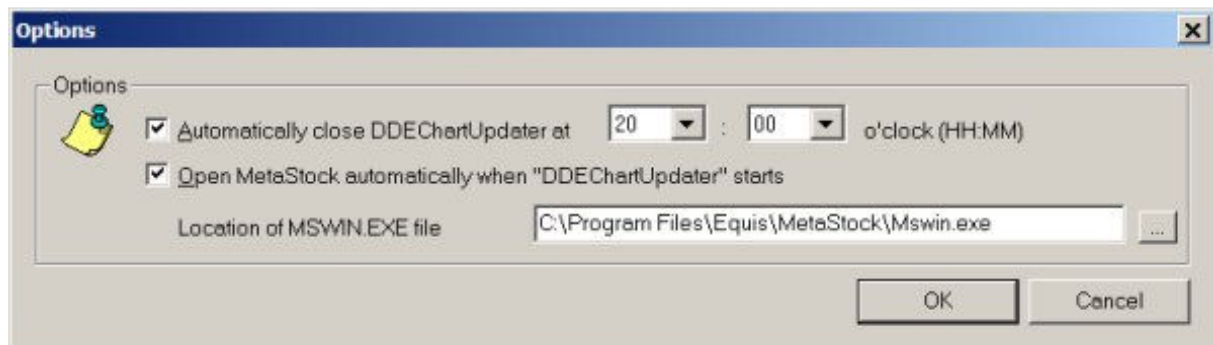
Every application is using a different DDE Topic and DDE Item. If you do not know the topic/item names of the external program you have to contact the vendor of this program.

Note: You can use the DDESpy program to find out DDE Topics and DDE Items.

The program will calculate the Open, High and Low prices for each interval, if you select the "Automatically calculate open, high, low prices". The OHL prices will be display in the main window, and will be written to the MetaStock/SierraChart files. (E.g. If you select the Interval "5 Minutes", DDEChartUpdater will collect all Ticks during this time period, and calculates the Open, High and Low prices.)

Options Dialog

Click on the "Options" menu to display the "Options" dialog.



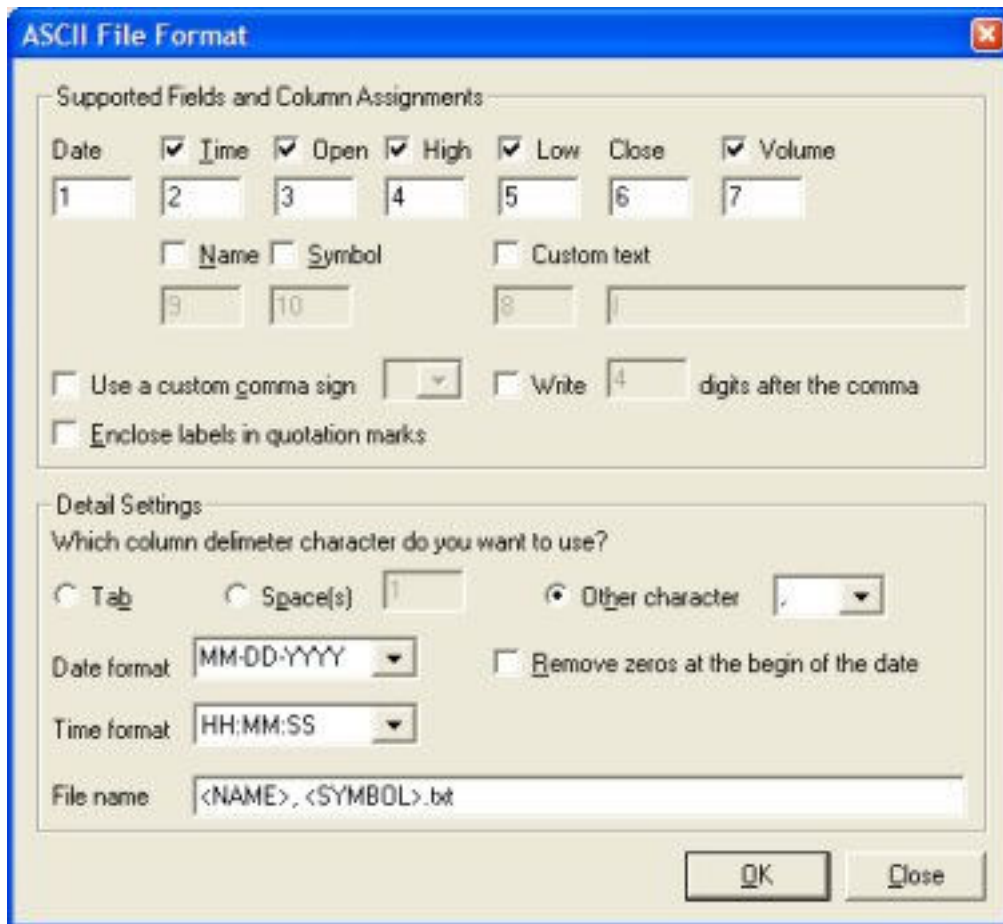
("Options" dialog)

You can specify a time, when DDEChartUpdater should be closed automatically.

DDEChartUpdater can start the MetaStock program for you. You only have to enter where the "MSWIN.EXE" file is located.

ASCII File Format Dialog

Click on "Options->Define ASCII File Format" to display following dialog. Here you can define the format of the ASCII files.



(ASCII File Format dialog)

Supported fields and column assignments

You use the check boxes to declare which fields you want DDEChartUpdater to create in your ASCII file. For each checked item you must declare in which column that data field is found. DDEChartUpdater does not permit multiple assignments to the same column. The "Date" field and the "Close" field are not optional - the ASCII file must have a "Date" column and a Close column. You can also specify the number of digits that are displayed after the comma.

Check the "Use a custom comma sign" box to use a different comma sign as you have specified in the Control Panel (Regional country settings). If you do not check this box the default comma sign will be used.

Check the "Enclose labels in quotation marks" box if you want that a quotation mark is set before and after the date, time, name and symbol.
Example: "ATML", "02/22/02", 7.550001, 7.18, 7.400001

Input File: Detail Settings

You should choose which character would be used as the field delimiter. That character pertains to all columns and data in the file.

You can select the Date field format in your ASCII source. There are different formats supported. Example 1: YYYY-MM-DD means that the year is expressed as a four-digit number and that the three fields are separated by a "-" character. Example 2: MMDDYY means that the year, month and day are expressed as a two digit numbers each no characters separate the fields.

Check the "Remove zeros at the begin of the date" box to remove all leading zeros of the date. Example: The date 000101 (1. January 2000) will be written to the ASCII file as

101.

You also have to enter a file name of the ASCII file. Do not enter a directory in this text box! The files will be stored in the directory you have specified in the "Symbol List" dialog. You can use the Auto-Name tags to create dynamic ASCII files. You can use following tags:

- <USER> (Name of the user that is logged in)
- <PC> (Name of the computer where DDEChartUpdater is running)
- <DATE> (Current date (YYYYMMDD))
- <TIME> (Current time (HHMMSS))
- <SYMBOL> (Security symbol)
- <NAME> (Security name)

DDEChartUpdater will automatically parse and replace the tags with the current user name, PC name, date, time, security symbol, security name, download symbol or symbol list name.

The string <SYMBOL>_<DATE>.CSV will be changed to MSFT_20011029.CSV

Tutorial

Connecting to an Excel Workbook via DDE

Let us assume that you have an Excel workbook that will be updated with (real-time) quotes automatically. Following steps are necessary to access these quotes with DDEChartUpdater:

1. Start Excel and open the workbook providing the quotes.
2. Start DDEChartUpdater.
To display the "Symbol Configuration" dialog, click on "Symbol->Add". Enter the symbol, name and the directory where you want to store the quotes of this stock.
3. Click on the "... " button that is located next to the "DDE server name" text box.

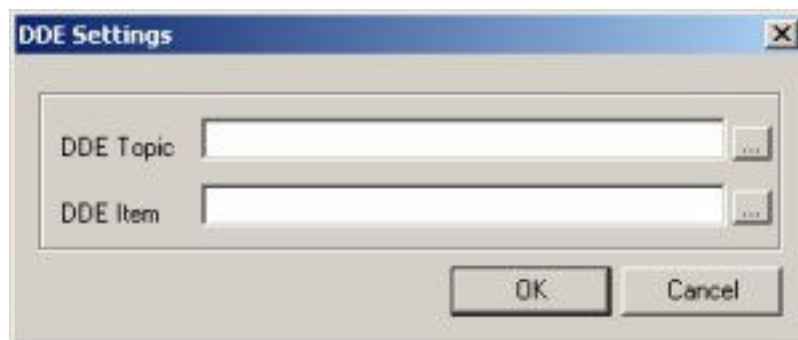


4. The "Select DDE Server Name" dialog will appear:



DDEChartUpdater will list all running applications that are supporting DDE. Doubleclick on the "Excel" entry. The dialog will close automatically. Now you have successfully specified the server name.

5. Now you can specify the Excel cell where the "close" record is stored. Click on the "..." button that is located next to the "Close record" text box. The "DDE Settings" dialog will appear.

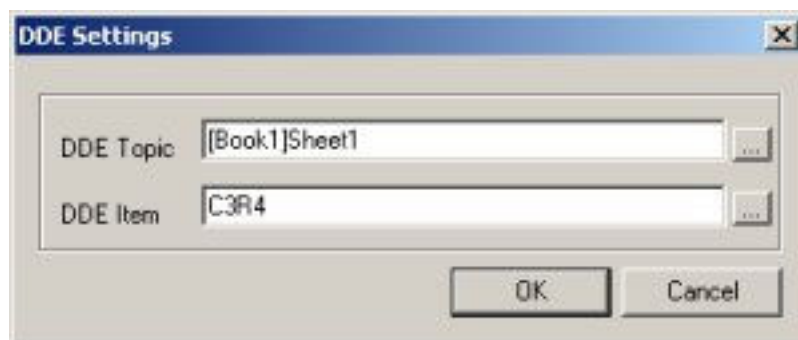


6. Excel uses the sheet name as DDE Topic. You can either enter the sheet name manually or using the "..." button to select the sheet names from a list.



Your list may differ from the above topic list. Make sure that you have selected the correct sheet name and double click on it. (Or press the OK button)

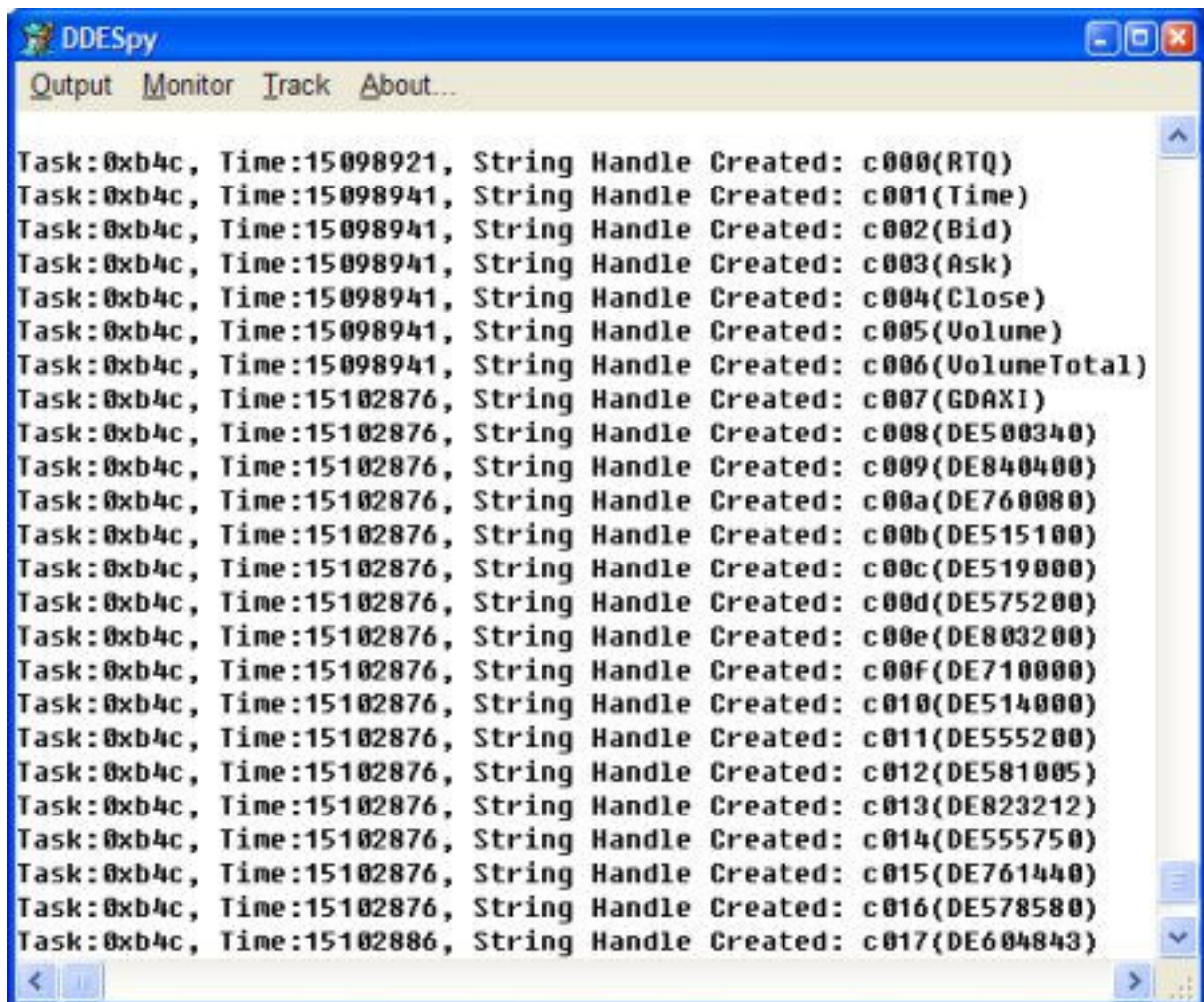
7. Now you have to specify the cell where the close record is stored. Let us assume that the record is stored in the cell "C4". "C" means that the record is stored in the third column. "4" means that the record is stored in the 4th row. Therefore the DDE item is R4C3. ("R" stands for "row", "C" stands for "column") The DDE item must be expressed in language of the Excel version. If you use a German Excel version you have to use Z4S3 ("Z" stands for "Zeile", "S" stands for "Spalte") Use L4C3 for French or W4KC for Polish. More examples: If the record is stored in the cell "F10" you have to use following DDE Item: "R10C6"
 Cell: A1, DDE Item: R1C1
 Cell: D20, DDE Item: R20C4
 Cell: H37, DDE Item: R37C8



8. Please repeat the steps from 5 to 7 if you want to use open, high, etc. prices.
9. Click on "OK" to close the "Symbol Configuration" dialog.
10. Click on "DDE->Start" to start collecting quotes. If a value in an Excel cell changes, DDEChartUpdater will display the new value in the main window and update the MetaStock/SierraChart files immediately.

How to use the DDESPY.EXE utility?

You can use DDESpy (DDESPY.EXE) to monitor dynamic data exchange (DDE) activity in the operating system.



(DDE SPY)

DDESpy can display DDE information in a window or on your debugging terminal, or it can save the displayed information in a file for later use.

You use the Output menu to select where DDESpy sends output. If you choose the File command, you can specify the name of an output file, or choose the No File button. After you have chosen the File command, DDESpy asks you for an output filename every time you restart it. This prompt can be turned off by reopening the File dialog box and choosing the No File button.

From the Output menu, you can also choose to send your output to either a debug terminal or to the DDESpy window. If you choose a window, you can clear the display window using the Clear Screen command. You can use the Mark command to add marker text to the display for example, before a DDE event to make it easier to find the event in the output file.

It is important to start DDESpy before you start the program creating the DDE items/topics!

Use the items/topics that are displayed in the main window of DDESpy and enter the in the "Symbol->Add" dialog.

Registration and Price Information

Product price: 49.95 € (EURO)

This copy of DDEChartUpdater is available for a 14 days evaluation period. If you decide to continue using the program, you need to register the program by using one of the methods described below. By registering the software, you are able to continue using it legally, and are supporting our efforts to continually develop innovative products to best serve your needs. If you order via credit card you receive the fully registered version of DDEChartUpdater within 5 minutes.

Click on the link below to make your order on a secure web site. You can pay via credit card, wire transfer, cash or check.

<http://shareit1.element5.com/register.html?productid=182291>

Alternatively you can order via phone, fax or postal mail. Please print out the order form.

Benefits of Registering:

- No restrictions on the number of starts.
- Free technical support provided by email. Questions usually answered same day.

Order Form

Please print out the following form, and fax or mail it to:

element 5 AG / ShareIt!
Vogelsanger Strasse 78
50677 Koeln
Germany

Phone: +49-221-2407279
Fax: +49-221-2407278
Email: register@shareit.com

US customers may also order by calling 1-800-903-4152 (9am-5pm). No technical support can be given at this number. US check and cash orders can be sent to our US office at

ShareIt! Inc.
PO Box 844
Greensburg, PA 15601-0844
USA

Order form for DDEChartUpdater

Program No.: 182291

Last name: _____

First name: _____

Company: _____

Street and #: _____

City, State, postal code: _____

Country: _____

Phone: _____

Fax: _____

E-Mail: _____

How would like to receive the registration key?

E-mail - fax - postal mail

How would you like to pay the product price of € (EURO) 49.95?

Credit card - wire transfer - Euro Cheque - cash

Credit card information (if applicable)

Credit card: Visa – Eurocard/Mastercard – American Express – Diners Club

Cardholder: _____

Card No.: _____

Date of Expiration: _____

Date / Signature _____

Contact

We provide support via email. You can email your questions, comments or bug reports to info@trading-tools.com. Normally all emails are answered throughout the 24-hour day. Please keep the following tips in mind:

Software Problems: It is easier to solve a software problem if you send us details that are as specific as possible when inquiring about software problems. Also tell us the operating system you are using.

Data Problems: Again, details that are as specific as possible is necessary in order to resolve any data problems quickly. Please specify the stock name and the date in question when reporting a data problem. Specifying what you think is wrong is also useful.

Web: <http://www.trading-tools.com>

Disclaimer of Warranty

Please note that by using DDEChartUpdater you are accepting the conditions of the Software Licence and Disclaimer of Warranty given below.

IMPORTANT - READ CAREFULLY

DDEChartUpdater is shareware program. This means:

1. All copyrights are exclusively owned by Trading-Tools.com.
2. Once registered, the user is granted a nonexclusive license to use DDEChartUpdater on one computer (i.e. a single CPU), for any legal purpose, at a time. The registered DDEChartUpdater software may not be rented or leased.
3. To register you must fill out the registration form. For more information please refer to the "Help" files. To purchase, go to <http://www.trading-tools.com/order.htm>.
4. You may not use, copy, emulate, clone, rent, lease, sell, modify, decompile, disassemble, otherwise reverse engineer, or transfer the licensed program, or any subset of the licensed program, except as provided for in this agreement. Any such unauthorized use shall result in immediate and automatic termination of this license and may result in criminal and/or civil prosecution.
5. Trading-Tools.com reserves the right to change the price for the program or any service without prior notice. Trading-Tools.com does not refund the purchases of shareware programs which have trial period.
6. NO LIABILITY FOR CONSEQUENTIAL, INCIDENTAL OR INDIRECT DAMAGES; TOTAL LIABILITY CAPPED. IN NO EVENT SHALL TRADING-TOOLS.COM BE LIABLE FOR ANY SPECIAL, INCIDENTAL, INDIRECT OR CONSEQUENTIAL DAMAGES WHATEVER (INCLUDING, WITHOUT LIMITATION, DAMAGES FOR LOSS OF PROFITS, LOSS OF BUSINESS INFORMATION, BUSINESS INTERRUPTION OR OTHER PECUNIARY LOSS) ARISING OUT OF THE USE OR INABILITY TO USE THE SOFTWARE, OR ANY ERRORS IN THE SOFTWARE, EVEN IF TRADING-TOOLS.COM HAS BEEN ADVISED OF THE POSSIBILITY OF SUCH DAMAGES. SOME STATES DO NOT ALLOW LIMITATION OR EXCLUSION OF LIABILITY FOR INCIDENTAL OR CONSEQUENTIAL DAMAGES SO THE ABOVE LIMITATION MAY NOT APPLY TO YOU. ALL SOFTWARE PRODUCTS CONTAIN SOME ERRORS AND INACCURACIES. YOU UNDERSTAND THIS AND FULLY ASSUME ALL RISKS AND CONSEQUENCES RELATING TO SOFTWARE ERRORS OR ERRORS THAT MAY RESULT FROM THE USE OF INACCURATE DATA IN CONJUNCTION WITH THE SOFTWARE. IN ALL EVENTS, YOU AGREE THAT THE MAXIMUM LIABILITY OF TRADING-TOOLS.COM TO YOU RELATING TO ANY CLAIM YOU MAY HAVE IN ANY MANNER RELATING TO THE SOFTWARE, OR THE USE, CONDITION, OPERATION, EFFECTIVENESS OR QUALITY THEREOF, WHETHER BASED IN CONTRACT, TORT OR ON OTHER GROUNDS OR THEORIES, AND REGARDLESS OF THE CIRCUMSTANCES, SHALL NOT EXCEED THE TOTAL AMOUNT ACTUALLY PAID BY YOU TO TRADING-TOOLS.COM TO LICENSE THE SOFTWARE.
7. TO THE MAXIMUM EXTENT PERMITTED BY LAW, TRADING-TOOLS.COM DISCLAIMS ALL WARRANTIES, EITHER EXPRESS OR IMPLIED, INCLUDING BUT NOT LIMITED TO WARRANTIES OF MERCHANTABILITY AND FITNESS FOR A PARTICULAR USE OR PURPOSE.
8. If you do not agree with the terms of this license you must remove DDEChartUpdater files from your storage devices and cease to use the product.

MetaStock™ is a registered trademark of EQUIS International. (<http://www.equis.com>)

Thank you for choosing DDEChartUpdater!