

QUICK START GUIDE

RF LOCKING SYSTEM

Congratulations! This SimonsVoss RF lock product has been designed to provide the best security for many years. To get the most from your system it is best to carefully read the manuals included, but let's be honest, when you have a product this exciting it's hard not to want to start using it as quickly as possible.

We have prepared this Quick Start Guide to help you get the product installed and running as quickly as possible. This guide does not cover all the functions or capabilities of the product. For complete instructions please read the manuals.

Let's get busy

Installing a SimonsVoss system involves a few simple steps:



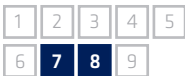
INSTALL SOFTWARE

1. Installing the LDB Program
2. Installing the SmartCD



DEFINE SYSTEM

3. Creating a new Lock System
4. Adding a new Lock
5. Adding a new Transponder
6. Granting Transponder Authorization



PROGRAM DEVICES

7. Programming a Lock
8. Programming a Transponder



INSTALL HARDWARE

9. Installing the RF Lock

All steps must be completed before the system is ready to use.

Note: A transponder that has not been programmed will open a lock that has not been programmed, but you do not want to operate your system that way because any new transponder can then be used to open your locks.

1. Installing the LDB Program

The LDB software requires a computer running the Microsoft Windows XP Professional or Home version or Windows 2000 Server edition. The computer must have 256 MB of RAM and at least 20 MB of free disk space. A typical lock plan requires 1 to 5 MB of disk space. The computer will also need a CD drive to install the software and a free USB port for the SmartCD configuration tool. The software assumes a minimum display resolution of 1024 by 768.

1.1 Put the installation CD in the CD drive. If autorun is enabled on the computer, you should eventually see a display screen that shows the options this CD provides. If this screen does not automatically display, then open the file named InitialDisplay.htm on the CD.

1.2 From the opening display select Install LDB Software.

1.3 Follow the setup instructions.

1.4 When the setup is complete, restart your computer.

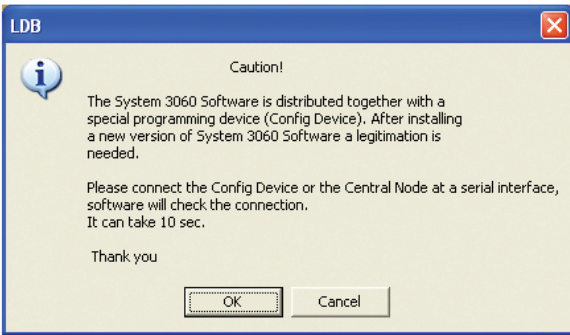
2. Installing the SmartCD

Before starting the LDB Software for the first time you will need to install the SmartCD drivers for the Microsoft Windows operating system.

2.1 Connect the SmartCD to the computer with the USB cable provided. The operating system should detect the presence of the device and begin the wizard for adding new hardware. If this does not happen automatically, select the Add Hardware wizard from the Control Panel. The wizard will ask for the location of the manufacturer's drivers.

2.2 Place the CD provided with the SmartCD or LDB software in the computer's CD drive and point the wizard to that drive.

2.3 When prompted click **OK** to confirm driver installation.

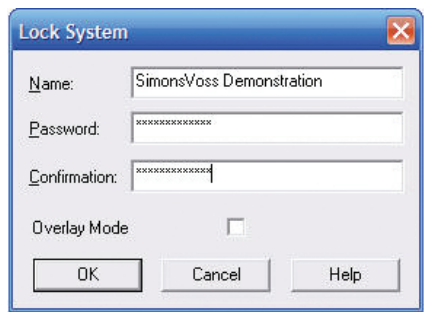


The first time you start the LDB software, it will check for the presence of a programming tool. This will take a few seconds. If the SmartCD is not connected at this time, connect it with the USB cable provided and click the **OK** button.

3. Creating a New Lock System

This step assumes the LDB software is installed and running on the computer.

3.1 To create a new lock system, select the menu item **New** on the toolbar and then the menu item **Lock System** on that menu (this is represented in our literature as **New > Lock System**). Enter the name of the Lock System (i.e. the name of the location where the locks are installed). Then press the Tab key.



The software will now ask for the password for the Lock System. Enter the password and then re-enter the same password in the area labeled confirmation. When typing in the password the asterisk character is shown for each character entered to prevent anyone from learning the password by watching over your shoulder. Requiring the password be entered twice confirms that it has been entered correctly.



WARNING

Choose your password carefully. Selecting a password that is too obvious reduces the security of your system. On the other hand, choosing a password that you can not remember can lock you out of the software and prevent you from making any changes to your hardware. There is no backdoor or manufacturer's secret to getting around a forgotten password.

3.2 Define whether you would like to operate the Lock System in Overlay Mode then click **OK**.



WARNING

Overlay mode is a decision that must be made when the lock system is created and cannot be changed later.

When a system is used in overlay mode any new transponder presented to a lock will automatically invalidate any transponder in the lock with the same user ID code. Not selecting overlay mode allows multiple transponders in any one lock to have the same user ID code, but requires the system administrator to specifically delete obsolete or lost transponders.

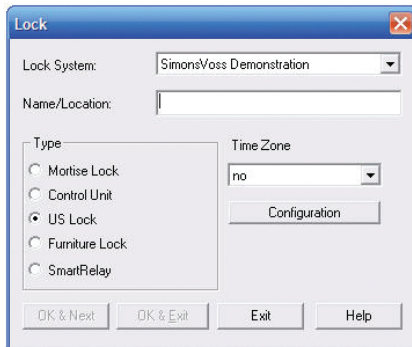
Selecting overlay mode reduces the number of transponders that each door will support from 8,000 per door without overlay mode to 1,000 per door with overlay mode.

4. Adding a New Lock

Upon creating a new lock plan, you are prompted to enter the name of your first door.

4.1 Choose a name that is unique and easy to distinguish from other doors. Using room numbers is one way of doing this.

4.2 Select the component that you are using. The default setting is US Lock.

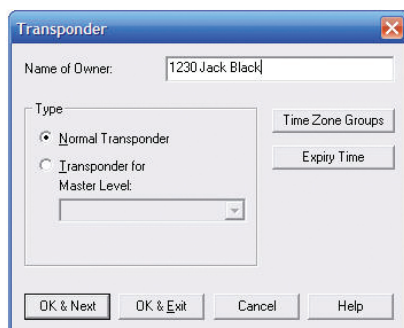


4.3 If the user access to the door is to be limited by time and date, the installer must configure the door to support time zone and audit trails (Configuration button) and Time Zones must be defined. These features are described in the user manual.

4.4 If you would like to set up more locks, then click **OK & Next**, otherwise click on **OK & Exit**.

5. Adding a New Transponder

Now that the lock is defined you need to define users who are authorized to use the lock. This is done by adding transponders to the lock plan and associating those transponders with user names.



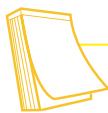
The screenshot shows a dialog box titled "Transponder". It has a "Name of Owner:" label and a text input field containing "1230 Jack Black". Below this is a "Type:" section with two radio buttons: "Normal Transponder" (which is selected) and "Transponder for Master Level:". The "Master Level:" label is followed by a dropdown menu. To the right of the "Type:" section are two buttons: "Time Zone Groups" and "Expiry Time". At the bottom of the dialog box are four buttons: "OK & Next", "OK & Exit", "Cancel", and "Help".

5.1 To add your first transponder, select **New > Transponder**.

5.2 Enter the name of the first transponder owner. This name can only be allocated once. You can also specify the serial number of the transponder along with the name (i.e. 12030 Jack Black).

5.3 If you wish to allocate more transponders, click on **OK & Next**.

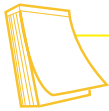
5.4 When you have entered all the names you want to define for now, click on **OK & Exit**.



Note: You can change the names of transponders at any time without reprogramming the transponders. The LDB Lock System software also gives you the ability to import the names of the transponders from an existing database; for more information, refer to the section of the LDB Manual on importing and exporting.

1	2	3	4	5
6	7	8	9	

7.1 Choose **Authorize > Authorize Lock System**. Enter your password and confirm by pressing **OK**.



Note: To open the lock plan again, select **Authorize > Open Lock System**. Enter your password and confirm it with **OK**. You can see if a lock plan is approved, because there will be a check after its name if it is approved.

7.2 Click on the lock you want to program using the left-hand mouse button; highlighting it.

7.3 Choose **Programming > Lock**.

7.4 Position the lock in front of the connected SmartCD configuration device. Make sure there is only one lock within three feet (1 meter) of the configuration device.

7.5 Left-click on the **OK** button.

When the lock has been successfully programmed, the yellow flash behind the lock on the main display disappears, and the cross at the intersections between the lock and the authorized transponders appears in bold.

Once you have programmed all the locks, close the window by clicking on Exit.

8. Programming a Transponder

With the locks programmed, it is time to program the transponder(s).

8.1 Select the first transponder in the main display by left-clicking on the name resulting in highlighting that column.

8.2 Click on **Programming > Transponder**. The name will appear in the box at the top. The programming of transponders also requires approval, in order to ensure that unauthorized persons cannot program them.



8.3 Click the **Authorize...** button.

8.4 Enter the password for your lock plan.

8.5 Then click **OK & Exit**. A window opens with the message that the programming of transponders is authorized.

8.6 Confirm this message by clicking **OK**.

8.7 Hold the transponder in front of the SmartCD programming tool and click **Program**.

8.8 The software will instruct you to briefly press the button on the transponder.

8.9 Confirm successful execution with **OK**.
The yellow programming flash next to the transponder name disappears indicating that this transponder has been programmed.

8.10 Once you have programmed all the transponders, click on **Exit**.

9. Installing the RF lock

The only thing left before you can start using your SimonsVoss RF lock is to install it in the door. Each RF lock comes with instructions that explain how to change the handing of the lock, if needed, and install it in the door.

When the lock has been properly installed the inside handle should smoothly operate the latch. The outside handle should move without affecting the latch until you press the button of one of the authorized transponders within 18 inches of the door handle. It will then operate the latch for 3 to 10 seconds (you will hear a double beep sound). Upon the completion of that time period there will be a single beep and then the outside handle will be disconnected again.