

User Guide

Thuraya IP

Satellite Modem

Revision A.2
3500175-0001

Copyright 2008 Hughes Network Systems, LLC.

All rights reserved. This publication and its contents are proprietary to Hughes Network Systems, LLC. No part of this publication may be reproduced in any form or by any means without the written permission of Hughes Network Systems, LLC., 11717 Exploration Lane, Germantown, Maryland 20876. Hughes Network Systems, LLC., has made every effort to ensure the correctness and completeness of the material in this document. Hughes Network Systems, LLC., shall not be liable for errors contained herein. The information in this document is subject to change without notice. Hughes Network Systems, LLC. makes no warranty of any kind with regard to this material, including, but not limited to, the implied warranties of merchantability and fitness for a particular purpose.

Trademarks

All trademarks, marks, names, or product names referenced in this publication are the property of their respective owners, and Hughes Network Systems, LLC. neither endorses nor otherwise sponsors any such products or services referred to herein. HUGHES and Hughes Network Systems are trademarks of Hughes Network Systems, LLC. THURAYA trademark is the sole and exclusive property of Thuraya Satellite Telecommunications Company.

For your safety and protection, read this entire user guide before you attempt to use **Thuraya IP** Satellite Modem. In particular, read this safety section carefully. Keep this safety information where you can refer to if necessary.

▶▶ Warning Symbols Used in this Guide

This section introduces the various types of warnings used in this document to alert you to possible safety hazards.



WARNING

Potential radio frequency (RF) hazard. Where you see this alert symbol and WARNING heading, strictly follow the warning instructions to avoid injury to eyes or other personal injury.



WARNING

Where you see this alert symbol and WARNING heading, strictly follow the warning instructions to avoid personal injury.



DANGER

Electric shock hazard: Where you see this alert symbol and DANGER heading, strictly follow the warning instructions to avoid electric shock injury or death.

Warnings for **THURAYAIP**



Do not stand in front of the Antenna

This device emits radio frequency energy when in the transmit mode. To avoid injury, do not place head or other body parts in front of the satellite antenna when system is operational. Maintain a distance of one meter away from the front of **ThurayaIP**'s antenna.



Properly ground the Antenna

Failure to properly ground the optional external antenna may result in severe personal injury or death. Do not attempt to ground the optional external antenna unless you have the skills to do so in accordance with local electrical codes.



Do not operate during Electrical Storms

Operation of **ThurayaIP** during electrical storms may result in severe personal injury or death. Disconnect **ThurayaIP** from computer and store unit indoors if lightning is anticipated in the area of operation.



General

Handle your **ThurayaIP** with care. The enclosure is weather resistant per IEC 60529 IP55. However, do not submerge the unit or expose it to severe rainstorms. Avoid exposing your **ThurayaIP** to extreme hot or cold temperatures. The operating temperature range of **ThurayaIP** is -10°C to +55°C.

Avoid placing your **ThurayaIP** close to cigarettes, open flames or any source of heat.

Changes or modifications to **ThurayaIP** not expressly approved by Hughes Network Systems could void your authority to operate this equipment.

Use a soft damp cloth only to clean your **ThurayaIP**.

To avoid impaired Modem performance, please ensure your **ThurayaIP**'s antenna is not damaged or covered with foreign material like paint or labelling.

When inserting the SIM, do not bend the SIM or damage the contacts in any way. When connecting the interface cables, do not use excessive force.



In the vicinity of blasting work and in explosive environments

Never use **ThurayaIP** where blasting work is in progress. Observe all restrictions and follow any regulations or rules. Areas with a potentially explosive environment are often, but not always, clearly marked. Do not use **ThurayaIP** while at a petrol filling station. Do not use near fuel or chemicals.



Qualified service

Do not attempt to disassemble your **ThurayaIP**. **ThurayaIP** does not contain consumer-serviceable components. Only qualified service personnel may install or repair equipment.



Batteries and accessories

Use approved batteries (HNS P/N 3500108-0001) and accessories only. Use of non-approved accessories may result in loss of performance, damage to **ThurayaIP**, fire, electric shock or injury.

AC Mains power adapter (HNS P/N 3500114-0001) is for indoor use only. It has an indoor operating temperature range of -10°C to +55°C and provides an output voltage of 12 VDC.

The storage capability of the battery decreases when operated below 0°C. If the battery is charged at too high a temperature, this will be indicated on the LCD display.



Battery Door

To ensure safety, ensure that the battery door is properly closed and latched at all times during operation. To close the battery door, hook the battery door tab under the edge of the large opening in the enclosure near the data connector ports. Firmly press the battery door into the opening. The seal around the battery door should snugly fit between the door and the enclosure with no pinch points visible. Once a good seal has been made, screw the retaining fastener into the enclosure until hand tight.



Connecting devices

Never connect incompatible products. When connecting **ThurayaIP** to any other device, read the device's User Guide for detailed safety instructions.



Pacemakers

The various brands and models of cardiac pacemakers available exhibit a wide range of immunity levels to radio signals. Therefore, people who wear a cardiac pacemaker and who want to use a Satellite Modem should seek the advice of their cardiologist. If, as a pacemaker user, you are still concerned about interaction with **ThurayaIP**, we suggest you follow these guidelines:

- Maintain a distance of 15 cm between **ThurayaIP** and your pacemaker;
- Maintain a distance of one meter away from the front of **ThurayaIP**'s antenna;
- Refer to your pacemaker product literature for information on your particular device.

If you have any reason to suspect that interference is taking place, turn off your **ThurayaIP** immediately!



Hearing aids

Most new models of hearing aids are immune to radio frequency interference from Satellite Modems that are more than 2 metres away. Many types of older hearing aids may be susceptible to interference, making it very difficult to use them near a Satellite Modem. Should interference be experienced, maintain additional separation between you and **ThurayaIP**.

INFORMATION TO USER

Hughes Network Systems, LLC, declares under our sole responsibility that the product Hughes 9103 Satellite IP Terminal to which this declaration relates, is in conformity with the following standards and/or other normative documents: ETSI EN 301 681 , ETSI EN 300 328, ETSI EN 301 489-1, ETSI EN 301 489-17, ETSI EN 301 489-20, IEC 60950-1. We hereby declare that all essential radio test suites have been carried out and that the above named product is in conformity to all the essential requirements of R&TTE Directive 1999/5/EC.

This device complies with Part 15 of the FCC Rules. Operation is subject to the following two conditions: (1) This device may not cause harmful interference, and (2) This device must accept any interference received, including interference that may cause undesired operation.

This equipment has been tested and found to comply with the limits for Class B Digital Device, pursuant to Part 15 of the FCC Rules. These limits are designed to provide reasonable protection against harmful interference in a residential installation. This equipment generates and can radiate radio frequency energy and, if not installed and used in accordance with the instructions, may cause harmful interference to radio communications. However, there is no guarantee that interference will not occur in a particular installation. If this equipment does cause harmful interference to radio or television reception, which can be determined by turning the equipment off and on, the user is encouraged to try to correct the interference by one or more of the following measures.

- Reorient or relocate the receiving antenna
- Increase the separation between the equipment and receiver
- Connect the equipment into an outlet on a circuit different from that to which the receiver is connected
- Consult the dealer or an experienced radio/TV technician for help

Any changes or modifications not expressly approved by the party responsible for compliance could void the user's authority to operate the equipment.

SAFETY INFORMATION	I
WARNING SYMBOLS USED IN THIS GUIDE	I
WARNINGS FOR THURAYAIP	II
CONTENTS	V
INTRODUCTION	1
FIRST TIME SET-UP	1
UNPACKING	1
SOFTWARE INSTALLATION AND CONFIGURATION	2
SETTING UP THE MODEM.....	2
STEP 1: SIM INSERTION.....	3
STEP 2: POWER CONNECTION AND BATTERY CHARGING.....	3
STEP 3: OBTAIN INITIAL GPS USING THE ThurayaIP.....	3
STEP 4: DATA CONNECTIONS	4
STEP 5: POINTING TO THE SATELLITE.....	4
QUICK REFERENCE	7
GLOBAL POSITIONING SYSTEM OPERATION.....	7
STORED GPS LOCATION.....	7
INTEGRATED MAN MACHINE INTERFACE (IMMI)	8
CONTROL BUTTONS.....	8
STATUS/MENU DISPLAY.....	9
NAVIGATION OF THE IMMI.....	9
DATA RATE SELECTION.....	10
RECEIVE SIGNAL STRENGTH DISPLAY.....	11
DISPLAY ICONS.....	12
WEB MAN MACHINE INTERFACE (WMMI) SCREENS.....	13
HOME SCREEN.....	14
PROPERTIES SCREEN	15
STATISTICS SCREEN.....	16
CONNECTION MANAGEMENT SCREEN	17
STATUS SCREEN	18
SETTINGS SCREENS.....	19
NETWORK SETTINGS SCREEN	19
SECURITY MANAGEMENT SCREEN.....	20
LOGIN SETTINGS SCREEN.....	22

WLAN CONFIGURATION SCREEN	22
WLAN SECURITY SCREEN	23
ADVANCED SETTINGS SCREEN	24
POINTING SCREEN.....	25
UPGRADING THURAYAIIP	27
UPGRADING SOFTWARE.....	27
TROUBLESHOOTING	28
GENERAL TROUBLESHOOTING	28
STATUS CODES.....	33
GLOSSARY.....	45
INDEX	47

Your **ThurayaIP** is a Satellite Modem that provides portable, high-speed data communications via satellite. Using “Always On” technology, you can remain connected to the Internet while only sending or receiving the data that you need at speeds of up to 444kb/s, just as if you were sitting at your office desk.

ThurayaIP works with your computer using an Ethernet, USB or Wi-Fi connection. While

ThurayaIP operates very similarly to other data modems that you may be familiar with, there are a few important operating differences to note. Please read this user guide carefully to understand all the aspects of operating your **ThurayaIP**.



First Time Set-Up

This section guides you through the process of setting up and configuring your **ThurayaIP** for the first time. The steps presented should be followed in the order given. When you are finished, your computer and modem will both be set up and ready to use.

▶▶ | Unpacking

Unpack the modem and accessory box items.

- ThurayaIP** Satellite Modem
- AC Mains Power Adapter and cable (100 – 240V AC)
- Universal AC power plug travel adapter
- Rechargeable Lithium Ion Battery pack
- Ethernet cable (do not use cross-over cable)
- USB cable
- CD ROM
- User Guide (this document)

Your Service Provider will supply a Subscriber Identification Module (SIM).

▶▶ Software Installation and Configuration

Your PC must support an Ethernet, USB or Wireless LAN interface to operate with **ThurayaIP**.

The CD ROM contains USB drivers for Windows 2000, XP, Vista and MAC OS10.3 and later operating systems. If you intend to use the **ThurayaIP** with a USB connection, please insert the CD ROM into the computer and follow the instructions to install the USB driver. MAC users will also need to carry out the following steps after the USB driver install completes:

- 1) plug in USB cable
- 2) Select Apple Menu->System Preferences on the MAC
- 3) Go to "Network"
- 4) A new network port should then be recognised



Note: You must verify that the proxy server settings in your browser are disabled. For Microsoft Internet Explorer, select Tools / Internet Options / Connections / LAN Settings and uncheck the box labelled 'Use a proxy server for your LAN'. For Netscape, go to Advanced Preferences and select 'Direct connection to the Internet'. When complete please close your browser.

DO NOT FORGET THAT YOU MAY NEED TO RECHECK THIS BOX ON RETURN TO YOUR OTHER INTERNET CONNECTION.

▶▶ Setting Up the Modem

There are five basic steps to getting your Modem up and running:

Step 1: SIM insertion

Step 2: Power Connection and Battery Charging

Step 3: Obtain Initial GPS Fix using the **ThurayaIP**

Step 4: Data Connections

Step 5: Pointing to the Satellite

STEP 1: SIM INSERTION

1. Unpack the modem and accessories. Your service provider will have provided you with a SIM card.
2. Insert SIM provided by your Service Provider into the SIM holder inside the battery compartment as shown.
3. To close the battery door, hook the battery door tab under the edge of the large opening in the enclosure near the data connector ports. Firmly press the battery door into the opening. The seal around the battery door should snugly fit between the door and the enclosure with no pinch points visible. Once a good seal has been made, screw the retaining fastener into the enclosure until hand tight.



SIM Insertion Orientation

STEP 2: POWER CONNECTION AND BATTERY CHARGING

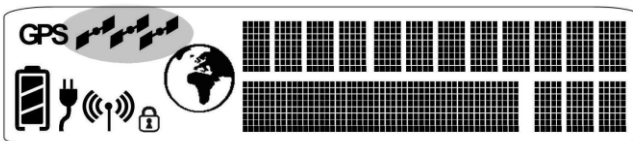
1. The **ThurayaIP** ships with the battery preinstalled; however, if needed, install the battery in the compartment pictured in Step 1.
2. Plug in Power cable and charge the battery for at least three hours.



DC Power Jack

STEP 3: OBTAIN INITIAL GPS USING THE **ThurayaIP**

1. Put the **ThurayaIP** outside on a flat surface with a clear view of the sky away from building, trees and other obstructions.
2. Power up Satellite Modem by pressing the Power button.
3. Once powered up, **ThurayaIP** will automatically attempt to locate itself using GPS. This may take up to five minutes. The small GPS satellite icons on the display (shaded area in the picture below) show how many GPS satellites are in view at any given time. You need all three satellite icons to be on solidly to obtain a GPS fix. If any are missing or flashing then the GPS signal is being blocked.



GPS Satellite Icon Location on Display

When the **GPS** icon stops flashing then **ThurayaIP** has successfully updated its GPS position.

STEP 4: DATA CONNECTIONS

Connect the **ThurayaIP** to your PC using Ethernet or USB. It is also possible to connect using the wireless LAN facility, but use one of the wired connections for the first time setup.



Data Connections

ETHERNET

Connect the Ethernet cable to your laptop's network interface and insert the other end of the connector into the **ThurayaIP**.



Note: Any Ethernet cable can be used to connect the laptop and modem as long as it is less than 100 meters in length.

USB

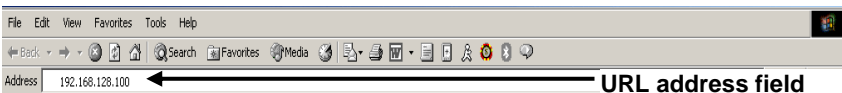
You will first need to install the USB driver from the CD ROM following the instructions in the Software Installation and Configuration section above. Next, connect the USB cable to your laptop's USB interface and insert the other end of the connector into the **ThurayaIP**.



USB and Ethernet Data Connection Locations

STEP 5: POINTING TO THE SATELLITE

1. **ThurayaIP** is controlled through a web browser interface (wMMI). To activate the wMMI, open the browser on your laptop. Enter <http://192.168.128.100> in the browser URL address field.



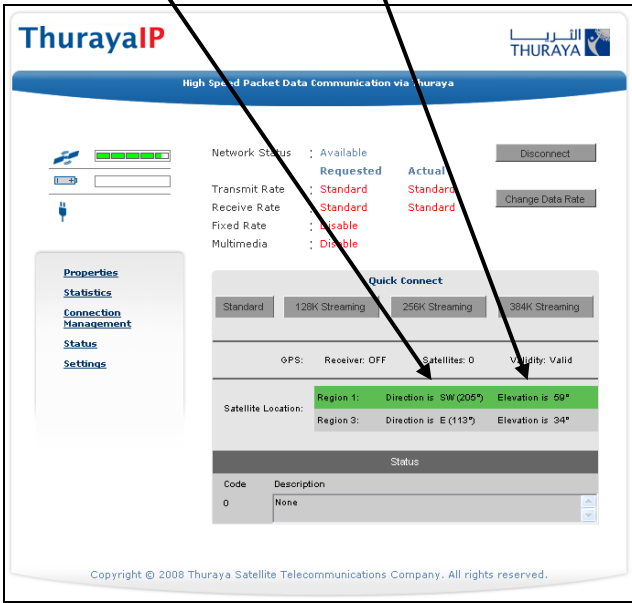
Note: You may want to store this URL as a browser bookmark.

- If you have PIN security enabled on your SIM, you will be prompted to enter your PIN before proceeding.



Note: You must have a valid GPS location for the compass direction and Antenna Angle to be displayed. If the GPS is not valid, go back to step 3 and allow **ThurayaIP** to obtain a GPS fix.

Compass Direction Antenna Angle



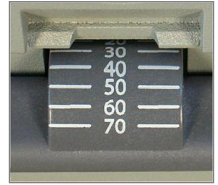
Home Page Satellite Location Display

- Look at the wMMI home page display and note the compass bearings and elevations for both **ThurayaIP** satellites in the "Satellite Location" section. The recommended satellite for your location will be highlighted in green. With the **ThurayaIP** terminal upside down, use the integrated compass to determine the direction of the recommended satellite. You must be able to obtain a clear view of the satellite in the sky for the **ThurayaIP** to connect to the network. If the recommended satellite is obstructed from your location, consider using the alternate satellite instead. If neither satellite is accessible from your location, you will need to move to a location that has visibility to at least one of the satellites.



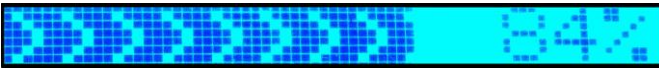
Compass

4. Once you have determined the best satellite to use, move the antenna stand to the correct elevation angle using the integrated protractor. Recall that the elevation angle is indicated on the wMMI home page. With the elevation angle correctly set, place the **ThurayaIP** on a flat surface with the antenna facing in the direction of the satellite as determined in step 3.



Protractor

5. You can optimise the receive signal strength by observing the signal strength display on the **ThurayaIP** while slowly rotating the **ThurayaIP** a few degrees clockwise and counter clockwise. Find the direction that maximizes the signal strength. Likewise, slowly raise and lower the antenna a few degrees and find the elevation that maximizes the signal strength. This step fine tunes the pointing of the antenna in the direction of the **ThurayaIP** satellite.



Receive Signal Strength on the ThurayaIP Display

6. Once the **ThurayaIP** obtains sufficient signal strength from the satellite it will automatically connect and establish an IP data session. Check this on the home page by confirming that the "Network Status" line shows "Connected".

Congratulations! Your ThurayaIP is successfully connected. You should now be able to send and receive data from your laptop to the internet.



Note: If you are unable to successfully connect to the Internet, ensure that nothing but open sky is between the **ThurayaIP** and the **ThurayaIP** Satellite. If the view is blocked by trees, mountains, buildings, metalized glass or similar objects then you must relocate the **ThurayaIP**. Additional assistance can be found in the troubleshooting section towards the end of the **ThurayaIP User Guide**.



Do not stand in front of the Antenna

ThurayaIP emits radio frequency energy when in the transmit mode. To avoid injury, do not place head or other body parts in front of the antenna when system is operational.

This section serves as a reference guide, identifying the key operational aspects of using the **ThurayaIP** system and the **Controls and Indicators** on **ThurayaIP** and their functions.

▶▶ Global Positioning System Operation

The **ThurayaIP** contains an integrated Global Positioning System (GPS) receiver that is used to provide location information. GPS location information is required for system access, and the reception of a new GPS location is attempted automatically every time **ThurayaIP** is powered on.

For optimum GPS signal reception, make sure **ThurayaIP** is positioned in a roughly horizontal placement. Since GPS receivers must “see” a large part of the sky without obstructions from buildings, mountains or trees, it may be necessary to take your **ThurayaIP** out to a clear space to obtain a new GPS location. It may be possible to obtain a new GPS location in a less favourable circumstance, but the time to completion may be longer.

Once updated, **ThurayaIP** remembers your location so the unit can be relocated to a more convenient working area, such as inside a building by a window facing toward the satellite.

Once you have established a session on **ThurayaIP** you will not need another GPS location while you remain connected in the “Always On” condition. This is convenient if you intend to operate from one location for an extended period of time since there is no need to move **ThurayaIP** to refresh the GPS receiver. Also, your stored GPS location remains good for a period of time even if you power down and move a short distance between sessions. When you believe this is the case, simply skip the GPS location step and complete the **ThurayaIP** satellite pointing operation prior to going directly onto the network. Be sure to carefully point your unit every time it is moved.

STORED GPS LOCATION

The most recent GPS location is stored in **ThurayaIP** even when powered down. Upon power up, the **ThurayaIP** will attempt to update this GPS location since the Thuraya system will only allow access if your GPS location is not too old. If **ThurayaIP** has a valid GPS location then the GPS icon on the display will go from flashing to solid. Likewise, the web MMI will indicate if the currently available GPS location is valid or invalid.

▶▶ Integrated Man Machine Interface (iMMI)

The **ThurayaIP** has an **Integrated Man Machine Interface (iMMI)** which allows you to control the operational features of the terminal without the need of a PC or a browser. The iMMI includes buttons labelled with defining icons, an LCD, and an audible pointing aid integrated into the **ThurayaIP** itself.

The figure below shows the layout of the **ThurayaIP** iMMI.



iMMI Button Locations

CONTROL BUTTONS

The following table gives you a summary of the four **ThurayaIP** buttons.

Button	Action	Result
Power button	Short press	Backlight on, cancel any menu operation, return to status menu
	Long Press	Turn unit on or off
Connect button	Short press	Toggle audio pointing state (sound on/off)
	Long press	<ul style="list-style-type: none">• Toggle connection state (connect/disconnect)• Exit pointing mode
Menu button	Short press	Scroll to next menu item
	Long press	Start GPS receiver manually
Modify button	Short press	Scroll to next option of displayed menu item when in menu
	Long press	Toggle Wi-Fi on/off (when not in menu display)

STATUS/MENU DISPLAY

The upper level of the LCD displays **status messages** and **menu items**. Status messages are summarized in the table below.

Display	Description
Powering Off	Displayed while ThurayaIP is powering down
Fault {code}	A hardware fault exists, preventing operation (see troubleshooting section for code explanations)
Too Hot	A temporary thermal shutdown is about to occur
Battery Hot	A temporary thermal shutdown is about to occur due to battery heating
No SIM	No SIM is detected in ThurayaIP
Locked	A security code is needed (entered via wMMI)
PIN	A SIM pin code is needed (entered via wMMI)
Pointing	In pointing mode
GPS old	GPS is older than the system time period allows
Disconnected	The terminal has no IP connection to the network, preventing data transfer
Acquiring	The terminal is attempting to connect to the network
Tx{rate}/Rx{rate}	Transmit and Receive streaming rates in kilobits per second
Standard	Best efforts quality of service in both directions

NAVIGATION OF THE IMMI

You navigate among the options available in the iMMI by utilizing the **Menu** and **Modify** buttons. With the unit in its “normal” state displaying status indicators, you press the Menu button to view and modify **Quality of Service (QoS)** settings and **LCD** display parameters. Pressing the Modify button within a Menu option allows you to change the current setting.

The status display is the default display; after 30 seconds of inactivity, the display always reverts to the status display. Pressing the Menu button takes you through a circular list of menu items and then back to the status display. The two major menu options are the following:

Change Rate: Modify the QoS settings for Transmit and Receive.

LCD Contrast: Modify the contrast on your LCD.

DATA RATE SELECTION

- With the unit in the default status display, press the **Menu** button. The **Change Rate** menu option is then displayed.
- Press the **Modify** button. You are then brought to the first value in the series of QoS settings.

Change Rate Menu	Comment
Standard	Selects Background QoS for both the transmit and receive directions
Tx: 384Kbps	Selects 384Kbps Tx Streaming QoS Hidden unless external antenna attached
Tx: 16Kbps	Selects 16Kbps Tx Streaming QoS
Tx: 32Kbps	Selects 32Kbps Tx Streaming QoS
Tx: 64Kbps	Selects 64Kbps Tx Streaming QoS
Tx: 128Kbps	Selects 128Kbps Tx Streaming QoS
Tx: 256Kbps	Selects 256Kbps Tx Streaming QoS Hidden unless external antenna attached
Rx: 384Kbps	Selects 384Kbps Rx Streaming QoS Hidden unless external antenna attached
Rx: 16Kbps	Selects 16Kbps Rx Streaming QoS
Rx: 32Kbps	Selects 32Kbps Rx Streaming QoS
Rx: 64Kbps	Selects 64Kbps Rx Streaming QoS
Rx: 128Kbps	Selects 128Kbps Rx Streaming QoS
Rx: 256Kbps	Selects 256Kbps Rx Streaming QoS

- Press the Modify button to scroll down the Standard and Tx QoS values until you see the setting you want. When you scroll to each setting, the displayed QoS value blinks, indicating that this selection is pending. Press the Modify button to move to the next setting without changing the pre-existing value.
- When the list of values is exhausted, press the Modify button to lead you back to the first value. You can cancel the selection

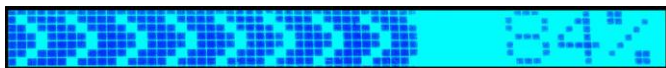
and transition back to the status display via a short press of the Power button.

- When you have found the value you want, press the Menu button. This action selects the new rate. Once you select the rate, you are transitioned to the Rx set of values unless you selected "Standard" in which case you will exit rate selection.
- Navigation through and selection of the Rx values is the same as for the Tx values. Use the Modify button to scroll through the list in a circular manner, with cancellation achieved via the short press of the Power button. Pressing the Menu button selects and stores the new Rx rate, and you will then exit rate selection.
- When you select a new QoS, the old PDP context is deactivated and a new PDP context is activated with the new rate selection. If the rate selection did not change as a result of the selection, then no PDP context change occurs.

RECEIVE SIGNAL STRENGTH DISPLAY

The lower row of the LCD is dedicated to RSSI (signal strength) information. This is used to monitor incoming signal strength from the Thuraya satellite and permit pointing or re-pointing to occur at any time during operation. The display provides both a graphical and digital indication of the signal strength.

The digital RSSI indication consists of a value between zero and 99. The graphical RSSI indication is a 50-element bar graph of the RSSI.



The RSSI display updates rapidly for at least five minutes after a satellite signal has been acquired or reacquired. After that acquisition, the RSSI display may be updated less rapidly to conserve power if the modem is running on battery. **Hint:** If the rate is reduced to save power, the rapid RSSI update mode can be re-enabled for 5 minutes if you short press the **Modify** button while the status display is present.

Audible Pointing Indicator

An audible pointing indicator provides an audible representation of the signal strength during antenna pointing. When on, the indicator emits pointing tones that increase in tempo as the pitch increases. If the satellite is not found, one tone is followed by a pause. The indicator always defaults to off when the unit powers on. Use a short press of the Connect button to toggle the audio pointing indicator on and off.

DISPLAY ICONS

Battery Icon

The battery icon displays the estimated life of the battery while under battery power. The battery icon also displays the charging state while under external power.



Power Icon

The power icon displays the state of the **external power input**.

- On if external power is connected.
- Off if external power is disconnected.



GPS Icon

The GPS icon indicates the state of the GPS information in the **ThurayaIP**, specifically whether the information is **up-to-date or should be refreshed**.



- The icon **flashes** when the stored GPS information is **older than the GPS validity period**.
- The icon is **on steady** when the stored GPS information is **within the GPS validity period**.

Satellite Icons

The satellite icons, located next to the GPS icon, indicate the **status of the GPS receiver** in the **ThurayaIP** and the **number of visible satellites**.



- The icons are **off** when the **GPS receiver is off**.
- The icons are **active** when the **GPS receiver is on**, either flashing or steady state. The number of icons in steady state indicates the number of GPS satellites in view. You will need all three on solidly to acquire a new GPS location.

Wireless LAN Icon

The wireless LAN icon displays the state of the WLAN feature.

- **Off** if **Wireless LAN** operation is **turned off**.
- **On** if **Wireless LAN** is **on**.



Wireless LAN Lock Icon

The lock icon displays the **state of encryption** for the WLAN feature. It is **displayed only if the Wireless LAN is on and WLAN encryption is turned on**.



Globe ICON



The globe icon displays the **state of IP connection** over the satellite.



- **Off** if **no PDP context** exists (no data traffic possible).
- **On** if a **PDP context exists** (ready for data traffic).

▶▶ | **Web Man Machine Interface (wMMI) Screens**

The **ThurayaIP** can be accessed through a standard web browser interface. To accomplish this, the connected computer must have one of the following supported browsers installed along with Java enabled (Java Runtime Environment 1.3.1 or later).

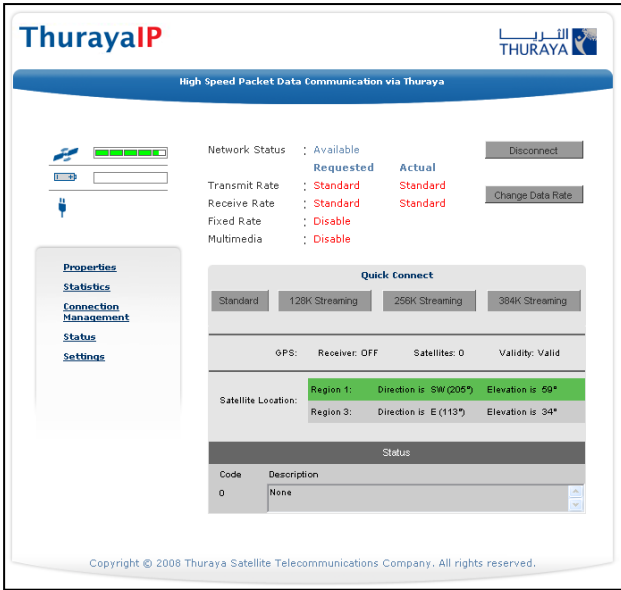
- Internet Explorer 6.0 or later
- Netscape Communicator version 7.2
- Firefox 2.0
- AOL Explorer
- Macintosh Safari

To access the **ThurayaIP**, connect your computer, run a supported browser and enter <http://192.168.128.100> into the browser's address field. You may wish to add this address to the browser's bookmark list so the address will be easier to find in the future. When active, the browser interface will allow you to access the wMMI.

Each of the main web pages contains important status information in the upper left hand corner. The bar graph next to the  icon represents receive signal strength. The bar graph next to the  icon provides an indication of the battery's level and charging state. The icon area below these indicators mirrors the icons described in the iMMI section above.

HOME SCREEN

The **Home** screen provides you with key summary status information about **ThurayaIP** and is also a gateway into **ThurayaIP** management.



Home Screen

Network Status: Provides the status of the network connection.

Transmit Rate: Provides the requested and actual transmit channel data rate. The actual allocated data rate may vary from the one requested due to subscription or system capacity restrictions.

Receive Rate: Provides the requested and actual receive channel data rate. The actual allocated data rate may vary from the one requested due to subscription or system capacity restrictions.

Fixed Rate: Provides the status of the Fixed Rate control. Enable Fixed Rate when using a streaming connection that must match the requested data rate. If the rate is unavailable, the connection will not be made.

Multimedia: Provides the status of the Multimedia control. Enable Multimedia when using streaming applications like Voice over Internet Protocol (VoIP) or live video playback.

Connect/Disconnect: This button toggles the network connection state on or off. When Disconnected no data can be sent or received.

Change Data Rate: This button allows you to change the connection parameters for the current session.

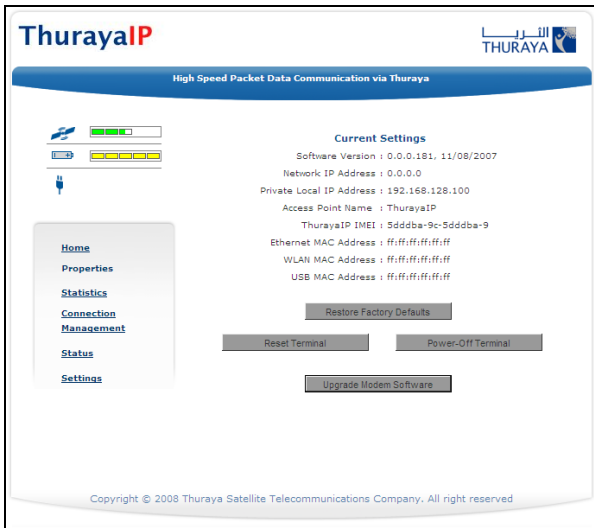
Quick Connect: These buttons access pre-stored connection profiles.

GPS: The display includes the GPS receiver state (On/Off), GPS satellites visible, GPS validity, compass direction and antenna angle. To obtain a GPS fix, make sure there are at least three visible satellites reported. Once a GPS position is obtained, the **ThurayaIP** will provide the compass direction and degrees of elevation to the satellite. This information is used in the pointing operation described earlier.

PROPERTIES SCREEN

The **Properties** screen displays a summary of current communications parameter settings. You can also use this screen to do the following:

- Restore Factory Defaults
- Reset Terminal
- Power Off Terminal
- Upgrade Modem Software (a link to the upgrade website)



Properties Screen

About Restoring Factory Defaults: When you click this button, the **restore message confirmation screen** informs you that the terminal is about to reset to factory defaults. Restoring the factory defaults returns the **ThurayaIP** settings to their original, just out-of-the-box state. This does not change the security code or SIM parameters. Please exercise caution when proceeding. If you invoke **Restore Factory Defaults**, you will need

to re-enter any configuration information supplied by your Service Provider. You must enter the security code to complete the reset.

Current Settings: provides the current communications parameters.

- Software Version
- Interface Mode
- Public Network IP Address
- Private Satellite Modem IP Address
- Modem International Mobile Equipment Identity (IMEI)
- Satellite Modem Media Access Control (MAC) Addresses.

STATISTICS SCREEN

This screen provides you with an estimate of your data usage. Data usage figures are obtained by counting the bytes in the IP packets received by and sent from the **ThurayaIP** terminal. You can view both “since power on” (per session) and “Cumulative” (lifetime) data usage counts. To reset the data counters of a session, simply select the **reset** button for either transmit or receive and click the **Apply** button.

The screenshot displays the ThurayaIP web interface. At the top, it says "ThurayaIP" and "High Speed Packet Data Communication via Thuraya". Below this, there are status indicators for signal strength and battery level. A navigation menu on the left includes links for Home, Properties, Statistics, Connection Management, Status, and Settings. The main content area is titled "Traffic Statistics since power-on" and shows two rows of data: "Data transmitted: 0.000 kBytes" and "Data received: 0.000 kBytes", each with a "Reset" checkbox and an "Apply" button. Below this is a section for "Cumulative Traffic Statistics" showing "Data transmitted: 5.890 MBytes" and "Data received: 5.292 MBytes". A disclaimer at the bottom states: "While all reasonable efforts have been made to maximize the accuracy of this data usage information, users are advised that accuracy may be affected by a variety of conditions. Results should be used as a guide only and users should be aware that the results do not override the calculations contained in invoices issued by the Service Provider." The footer contains the copyright notice: "Copyright © 2008 Thuraya Satellite Telecommunications Company. All right reserved".

Statistics Screen



Note: The data usage figures provided on the screen are estimates only. This feature is not tied into the actual billing system. Hughes assumes no liability if differences are found between data usage figures and your actual bill.

CONNECTION MANAGEMENT SCREEN

Accessible from the Main Menu, the Connection Management Screen allows you to select Quality of Service (QoS) parameters separately for transmit and receive data. Note that the “384Kbps” selection requires an external antenna.

ThurayaIP

النوريا
THURAYA

High Speed Packet Data Communication via Thuraya

Note: An external-antenna is required for choosing 384Kbps.

Transmit Rate: 128Kbps Dedicated

Receive Rate: 128Kbps Dedicated

Multimedia: Disable

Fixed Rate: Disable

Apply Cancel

Caution: Selecting a new transmit or receive rate will disconnect any current connection and reconnect at the newly selected rate.

Copyright © 2008 Thuraya Satellite Telecommunications Company. All right reserved

Connection Management Screen

Transmit Rate and Receive Connection Rate: Allows you to select the transmit and receive rates from the list of Bandwidth values.

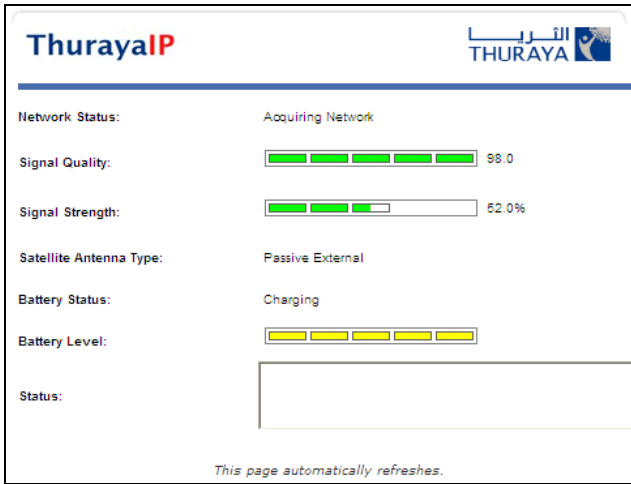
Multimedia Control: Allows you to enable or disable Automatic Repeat-erQuest (ARQ) over the satellite. Typically, ARQ—an error control protocol for data transmission—is best disabled for voice or video traffic.

Fixed Rate Control: Allows you to enable or disable fixed rate service over the satellite. You can force the connection to match the requested QoS. If **disabled**, the best streaming rate possible -- up to and including the selected rate -- will be allowed. If **enabled**, the terminal will not set up a connection unless the requested rate is available from the network.

Remember to click **Apply** to save any changes or they will be lost.

STATUS SCREEN

The **Status Screen**, displayed in a separate window, provides you with a constantly updated flow of dynamic information and a concise summary of the **ThurayaIP** status.



Status Screen

This display gives you a summary of current Satellite Modem system configuration and performance. When the Status Window is open, its information is updated every minute. *Note that if you are running on battery power, your available operating time will be reduced.*

Network Status: Provides the status of the network connection.

Signal Quality: This bar graph displays satellite signal quality.

Signal Strength: Use this display to monitor incoming signal strength from the satellite and permit pointing or re-pointing to occur at any time during operation.



Note: Signal Quality vs. Signal Strength. The Signal Quality status is a different measure of the received satellite signal than the Signal Strength status. Seeing differences between these two levels is normal and not an indication of a problem with your **ThurayaIP**.

Satellite Antenna Type: Use this display to determine which satellite antenna is in use. The standalone terminal will use its internal antenna. Optional external antennas, active and passive, can be hooked up to the **ThurayaIP** for convenience and higher performance. See your service provider regarding these accessories.

Battery Status: On battery, charging or charged.

Battery Level: This bar graph provides an indication of remaining battery capacity.

- **Green**: normal indication of battery level
- **Red**: almost fully discharged
- **Amber**: charging under external power

Status: Any current system status codes (see Troubleshooting section).

SETTINGS SCREENS

From the Main menu you can select **Settings** to navigate among all the various Settings functions from the menu on the left side of the screen:

- Network Settings
- Security Management Settings
- Login Settings
- Advanced Settings

NETWORK SETTINGS SCREEN

After executing the necessary First Time Set-up steps to configure **ThurayaIP**, you may want to select the **Network Settings** screen to check your network configuration.

Network Settings Screen

This screen provides you with control over key network access parameters. Here you find the appropriate Domain Name Service (DNS)

and the Access Point Name (APN) information configured by your Service Provider. You are also given the ability to make changes.



Note: Generally your Service Provider has already performed this configuration step for you. Whenever you modify the addresses on the Network Settings screen, you must press **SAVE** and exit the wMMI, reboot your computer, and power the **ThurayaIP** off and then back on so that the new settings can take effect.

NET IP:

Obtain Address Automatically: If this button is **selected**, **ThurayaIP** uses an IP address automatically assigned by the network during the period when the Modem connects to the network.

Statically Configure Address: If this button is **selected**, the Modem uses the IP address you enter in the Static Public Network IP Address field. You should check this box and enter an IP address only if directed to do so by your Service Provider.

DNS:

Obtain DNS Address Automatically: If this button is **selected**, **ThurayaIP** uses a Primary Host Domain Name Service (DNS) automatically assigned by the network during the period when the Modem connects to the network.

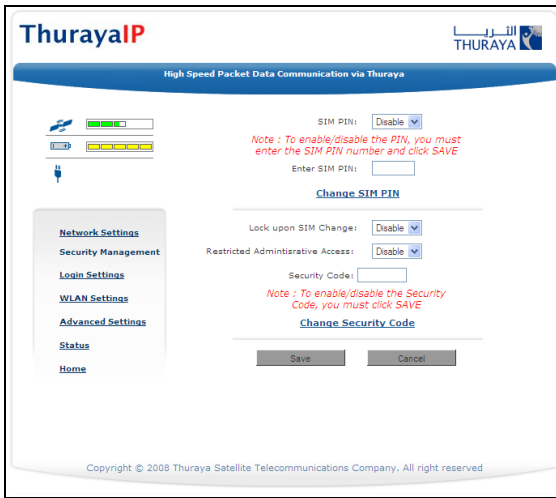
Statically Configure Address: If this button is **selected**, the Modem uses the DNS address you enter in the DNS Address field. You should check this box and enter an IP address only if directed to do so by your Service Provider.

APN Selection: If use of multiple Internet Service Providers is required, you can modify the current **Access Point Name (APN)** value. You should modify these fields only if directed to do so by your Service Provider. The choices are the following: Streaming-CBR, Refill, <BLANK> (enter the desired name) and Disabled.

SAVE/ CANCEL: If you want the values you have entered to be processed, click the **SAVE** button, **exit** the wMMI, and **reboot** your computer. You will also need to turn **ThurayaIP** off and then on again so that the new settings can take effect. If you want the values you have entered to be ignored, click the **CANCEL** button and the Network Settings remain as they were with no reboot required.

SECURITY MANAGEMENT SCREEN

The **Security Management** screen allows you to impose a tighter level of security on your **ThurayaIP**.



Security Management Screen

SIM PIN Disable/Enable: If **Enabled**, a prompt requests you to enter the SIM PIN each time you power up the modem. This helps prevent unauthorised use of your SIM. **Disable** this feature to skip the PIN entry process. To change the setting, click the desired one, enter the current SIM PIN (required), and click the **Save** button.



Note: If the SIM PIN code is incorrectly entered three times, the SIM will be locked until the PUK (Pin Unlock Key) number is entered. Consult your Service Provider if you do not have your PUK number.

Change SIM PIN: If the SIM PIN is **enabled**, and you would like to change the existing PIN, click this link. You will be required to enter the Old PIN, the New PIN, and the New PIN again for confirmation.

Lock Upon SIM Change: When this setting is **enabled**, you must enter a security code when the terminal powers up with a new SIM.

Restricted Administrative Access: When Restricted Administrative Access is **enabled**, protected web pages can only be accessed after you enter a username and password. The username is the fixed string "admin" and the password is the security code.

Change Security Code: The security code is 12345 when shipped from the factory. To change an existing Security Code, click this link. You will be required to enter the Old Code, the New Code, and the New Code again for confirmation. Click **Save** to store the changes.



Note: If you forget the security code you will need to consult with your service provider.

LOGIN SETTINGS SCREEN

Utilize the login screen only if you have been given the necessary information from your Service Provider.

Service Provider Security: If this is **enabled**, you can enter a **User Name** and **Password** for authentication between **ThurayaIP** and your Service Provider. Your Service Provider will let you know if this step is required and give you the necessary information.

User Name, Password, Confirm Password: You must enter the password twice to ensure accuracy.

WLAN CONFIGURATION SCREEN

The WLAN Configuration screen allows you to configure WLAN characteristics, including enabling/disabling WLAN, setting a timer that will force WLAN to power down if no host connects within the timeout, and setting up security.

WLAN Configuration Screen

WLAN Power: Select ON or OFF to turn the feature on or off.

WLAN Power Off timeout: If **disabled**, there is no timeout. If this parameter is **enabled**, the WLAN will remain powered up for the

selected timeout value after the terminal powers on. If no WLAN activity is detected during the timeout, the WLAN card will power down.

WLAN SSID: The WLAN network ID (SSID) can be entered as desired.

WLAN Region: Select the WLAN region from a drop down list (X10, X20, X30, X31, X32, X40 and X41). If you try to activate a channel not supported in the selected region, the request shall be rejected with an error message.

WLAN Channel: Select the WLAN channel from a drop down list (1 through 14).

WLAN SECURITY SCREEN

The WLAN Security screen allows you to configure WLAN security parameters, including enabling/disabling Wired Equivalent Privacy (WEP), hiding the SSID and setting Media Access Control (MAC) filters.

Access this screen by clicking the **WLAN Security Settings** link towards the bottom of the **WLAN Configuration Screen**.

The screenshot shows the 'WLAN Security Screen' interface. At the top, it features the 'ThurayaIP' logo and the text 'High Speed Packet Data Communication via Thuraya'. The main content area includes several configuration options: 'WLAN SSID Broadcast' set to 'Enable', 'Security (WEP)' set to 'Disable', and a note stating 'Only Key-1 is supported for 128-bit WEP.'. Below this, there is a section for 'WEP Key to Use: Key1' with a text input field containing '3f3a6edaa3d6f40c3b7f462e5e' and a 'Generate' button. There are also 'Hide Keys' and '64-bit WEP' buttons. The 'MAC Filtering' is set to 'Disable'. At the bottom, there are eight MAC address fields (MAC 1 through MAC 8), each containing 'FF:FF:FF:FF:FF:FF'. 'Save' and 'Cancel' buttons are located at the bottom center. A sidebar on the left contains navigation links: 'Network Settings', 'Security Management', 'Login Settings', 'WLAN Settings', 'Advanced Settings', 'Status', and 'Home'. The footer contains the copyright notice: 'Copyright © 2008 Thuraya Satellite Telecommunications Company. All right reserved'.

WLAN Security Screen

WLAN SSID Broadcast: **Enable** or **Disable** SSID broadcast.

Security (WEP): **Enable** or **Disable** security for Wired Equivalent Privacy (WEP), a security protocol for the wireless local area network.

WLAN Key to Use: Select the **active key**--Key1 through Key4--from a pull down menu. Note that in 128-bit key mode only Key1 is available.

64-bit WEP/128bit-WEP: Use this button to toggle between 64-bit and 128-bit WEP mode.

WLAN Key Fields, Key 1 through Key 4: In 64-bit WEP mode, enter a 10 character (0-9, A-F) **key value** in each of four text boxes. In 128-bit WEP mode, enter a 26 character (0-9, A-F) **key value** in the Key1 text box.

Generate: Instead of manually entering a key value, you may press the **Generate** button to automatically generate a key value.

Hide Keys: Click this button to hide the keys from this display.

MAC Filtering: **Enable** or **disable** MAC filtering. If filtering is **enabled**, you can enter up to eight MAC addresses. Only these addresses will be permitted to access the terminal.

ADVANCED SETTINGS SCREEN

The advanced settings screen allows you to modify several key operating parameters in the unit.

ThurayaIP

High Speed Packet Data Communication via Thuraya

Satellite Search Method: Normal **Select "Full" only when directed by your service provider.**

Auto Power ON: Enable

Antenna Poling: Disable

LCD Backlight Config: ON [15 sec]

Power Up Profile: Standard

Profile Name	Multimedia	Fixed Rate	Transmit Rate	Receive Rate
128K Streaming	Enable	Disable	128Kbps	128Kbps
256K Streaming	Enable	Disable	256Kbps	256Kbps
384K Streaming	Enable	Enable	384Kbps	384Kbps

Save Cancel

Copyright © 2008 Thuraya Satellite Telecommunications Company. All right reserved

Advanced Settings Screen

Satellite Search Method: **Normal** is the default method to use unless your Service Provider specifies the Full Method. The **Full** method takes longer

and utilizes more resources since it will search all possible frequencies for **ThurayaIP** service. This full search can take up to 20 minutes.

Auto Power ON: When **Enabled**, the terminal will automatically power up when external DC is present.

Antenna Pointing: This drop-down menu determines whether the Pointing Display comes up each time **ThurayaIP** is powered up or restarts. The factory default for this setting is **Disabled** to bypass the pointing state upon power up. However, antenna pointing can be **Enabled** to provide pointing information prior to going online.

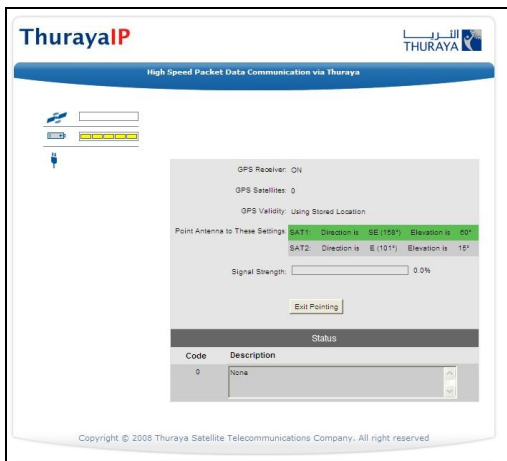
LCD Backlight Config: LCD backlighting can be **On (15 sec)**, **Off**, or **Auto** (off after 15 seconds of inactivity unless external DC present).

Power Up Profile: You can select the power up profile from a drop down list, including Standard and three customizable streaming profiles. Each streaming profile can be customized by **name**, **multimedia** mode, **fixed rate** mode, **transmit rate**, and **receive rate**.

Select the **Save** button to implement your modifications.

POINTING SCREEN

The antenna pointing step can be enabled using the **Antenna Pointing** option on advanced settings screen described above. When this option is **enabled**, the **ThurayaIP** will stop in a pointing mode prior to accessing the network after powering up. This can be useful when optimal pointing is important, such as with fixed installations using an external antenna.



Pointing Screen

The pointing screen has a signal strength bar graph and numeric value to assist in accurate antenna pointing. The green bar identifies the signal strength measured during antenna pointing and will help you optimise the pointing direction. Note that obtaining the highest signal strength possible will ensure that you have an optimum connection to the network.

GPS Receiver: On/Off

GPS Satellites: The number of satellites visible to the unit

GPS Validity: Invalid, Stored or Valid. See the Global Positioning System Operation section for more details on GPS.

Point Antenna to These Settings: Compass Direction and Antenna Angle to help orient **ThurayaIP** toward the satellite. Once this rough pointing is accomplished, use the Signal Strength meter described below to optimise the pointing direction.

Signal Strength: This blue bar moves to the right as the signal received from the satellite gets stronger. The numeric display to the right of the bar is simply a digital representation of the bar. The orange peak-hold bar at the end of the blue bar identifies the highest signal strength measured during antenna pointing and will help you optimise the pointing direction. Use this display when fine tuning **ThurayaIP**'s orientation to the satellite. Signal strength is only a relative measure of the satellite signal strength and may vary from location to location.

Exit Pointing: Select this button to leave the screen after optimum signal strength has been achieved. This action will take you to the Home screen on the wMMI.

Status: Status codes (see end of guide for a list).

Upgrading

Should a **ThurayaIP** Modem software upgrade become available, you can complete the upgrade process yourself. The software can be downloaded directly from the Internet using any available access method, including **ThurayaIP**.

UPGRADING SOFTWARE

In order to upgrade software **you must first connect to the Internet** and follow the steps listed below:

1. Connect your PC/Notebook to the Internet using **ThurayaIP** (satellite service), wired LAN, or dial up connection.
2. Go to www.thuraya.com or use the Upgrade link on the Properties Page if connected to the **ThurayaIP**.
3. Go to the web site area for **ThurayaIP** updates.
4. To download, select the latest upgrade package. The browser proceeds to retrieve the package.
5. Once the package is downloaded, you are prompted to execute the package. Select **Yes** and the upgrader application will self-extract onto the PC's hard drive.
6. Once the package is installed, it puts a shortcut on the desktop and prompts you to **upgrade now**. Make sure the **ThurayaIP** is now connected to the PC via Ethernet (recommended) or USB and is powered up. Select the upgrade option on the PC, and the program will allow you to upgrade the terminal.
7. The upgrader will query the current software version of the terminal. You should choose whether you want to upgrade to the newer version of software.
8. If you choose to upgrade the terminal, the process automatically downloads the new release of software and forces a terminal reboot.
9. When the terminal returns from reboot, you can verify that the download was successful via the **Properties** page in the wMMI.
10. Once loaded onto a PC, the upgrade program can be used to upgrade any number of **ThurayaIP** terminals. Just connect them one at a time and execute the upgrade program.

This section details the following:

Some general hardware and software problems you may encounter in the installation and operation of **ThurayaIP** along with the possible source of these problems and how to correct them.

System fault codes and descriptions reported to you by **ThurayaIP** on the wMMI screens, along with their possible causes and solutions.

If unable to correct a problem please contact the **ThurayaIP** dealer you purchased the unit from.

▶▶ General Troubleshooting

Problem	Possible Cause	Action
ThurayaIP will not switch on, or will not stay on when under battery power.	Battery needs recharging.	Charge the battery. Check Battery Light or wMMI screen for battery charging indication.
	The battery is not inserted properly.	Remove and reinsert the battery. Make sure the battery cable connector is latched.
	The battery contacts are dirty or damaged.	Check the battery connector contacts. Clean them if necessary. If you find any damage, replace battery.
	The Modem was reset while under battery power	When the Modem is reset while under battery power (no AC Mains connected), you must turn it back on manually. This is a normal operation for the Modem.
SIM card error.	SIM card or SIM card contacts may be damaged.	Visually inspect the SIM card and SIM card contacts and return SIM card to your Service Provider if it is damaged.
	SIM card may not be present.	Remove the battery door and verify that the SIM card is present.
	SIM card may be inserted incorrectly.	Remove the SIM card and make sure that it is inserted according to the instructions in the User Guide.

Problem	Possible Cause	Action
	SIM card contacts may be dirty.	Clean the SIM card contacts with a dry cloth.
The wMMI does not work from browser.	The browser may not be correctly configured.	For Netscape, go to Advanced Preferences and select 'Direct connection to the Internet.' For Microsoft Internet Explorer, select Tools / Internet Options / Connections / LAN Settings and uncheck the box labelled 'Use a proxy server for your LAN.' You May Need To Recheck This Box Upon Returning To Your Other Internet Connection.
Primary LAN connection to the Modem does not function.	The interface cable is not plugged in correctly.	Remove and reinsert the interface cable from both the PC and the Modem.
	The PC Windows network settings may not be configured correctly.	Make sure the Windows network settings in the PC are set to choose IP settings automatically (DHCP). Then reboot the PC.
	The PC can only have one active LAN connection. When connected to the PC, the Modem must be the only active LAN connection.	Disconnect all other LAN connections. Make sure the Modem is the only active LAN connection. Windows limits the number of network bindings to six. If you have more than six, you must remove one in order for the PC to communicate with the Modem.
The compass does not appear to work correctly.	The compass is not level or is near metal.	Hold the ThurayaIP upside down and level, away from metallic objects.
The Security Code appears to be invalid.	The code may have been changed.	After ten failed attempts to enter the Security Code, you must switch the Modem off and on again to have access to another 10 retries. If you forgot the Security Code, contact your Service Provider.

Problem	Possible Cause	Action
The SIM PIN code appears to be invalid.	The code may have been changed.	If the SIM PIN is blocked, contact your Service Provider to obtain the PUK (PIN Unlock Key) code. Enter the PUK when prompted.
ThurayaIP cannot locate itself using GPS.	No signal or weak signal.	Make sure no obstruction is blocking the GPS antenna and that the Modem has a clear view of at least 3/4 of the sky. Make sure that you do not place your hand or another object over the main antenna radome.
	Determining GPS position can take up to 5 minutes.	Wait for 5 minutes. Switch the Modem off and on again.
	The Modem is configured to use an external GPS antenna.	The antenna switch is automatic, if you have connected a GPS antenna make sure it can see the full sky
The Signal Strength meter on the pointing screen does not change when moving the antenna.	Java not enabled on the browser.	Enable Java applications on the browser.
	Rough pointing not completed correctly.	Follow the instructions in the User Guide to correctly complete rough pointing.
ThurayaIP cannot find the satellite.	No signal or weak signal.	Make sure no obstruction is blocking the satellite signal. Make sure that the Modem has a clear view of the sky in the direction of the satellite. Be aware that metalized window glass may reduce or entirely block the signal. Check that the antenna is pointed using the correct compass direction and antenna angle from the wMMI Pointing screen.
ThurayaIP cannot access the internet after successful pointing.	You did not exit antenna pointing mode.	Click the 'Exit Pointing' button from the Pointing page or press the Connect button on the face of the terminal.

Problem	Possible Cause	Action
	The antenna may not be pointed properly.	Turn ThurayaIP off and then back on again, and attempt antenna pointing again to improve the signal strength. You may need to reposition ThurayaIP , verifying that there are no obstructions blocking the satellite signal and that the Modem has a clear view of the sky in the direction of the satellite.
	The Modem network settings may not be correctly configured.	Refer to the network settings supplied by your Service Provider. If the DNS Host settings are changed, the PC must be rebooted.
	The browser may not be correctly configured.	For Netscape, go to Advanced Preferences and select 'Direct connection to the Internet.' For Microsoft Internet Explorer, select Tools / Internet Options / Connections / LAN Settings and uncheck the box labelled 'Use a proxy server for your LAN.' YOU MAY NEED TO RECHECK THIS BOX UPON RETURNING TO YOUR OTHER INTERNET CONNECTION.
No network access or poor network performance.	Interference from other satellite mobile terminals.	If you are near another satellite mobile terminal, switch the other satellite mobile terminal off or move as far away as possible to avoid interference.
The battery will not charge.	The battery is defective.	Replace the battery. After several years of average use, a gradual decline may be expected.
	The battery contacts are dirty or damaged.	Check the battery connector contacts. Clean them if necessary. If the battery is damaged, replace it.

Problem	Possible Cause	Action
Satellite Modem stops sending data even with good network connection and sufficiently charged battery.	Modem/battery is overheated.	If the LCD display indicates an over temperature condition let the ThurayaIP cool down before attempting to resume operation.
The Signal Quality meter on the wMMI changes from time to time.	Normal behaviour.	There are several types of channels used by the Modem, each with different signal strengths. Because the Signal Quality meter measures the channel currently in use, there may be slight differences in what the meter shows as channels are changed from one type to another.

▶▶ Status Codes

Number and Description	Cause	Solution
<p>1 SIM card is not installed. Power down, install SIM card properly and try again.</p>	<p>Absence or incorrect installation of the SIM card.</p>	<p>SIM card may not be present. Remove the battery cover and verify that the SIM card is present.</p> <p>SIM card may be inserted incorrectly. Remove SIM card and make sure it is inserted according to the instructions in the User Guide.</p> <p>SIM card may be damaged. Visually inspect the SIM card and return it to your Service Provider if damaged.</p> <p>SIM card contacts may be dirty. Clean the SIM card contacts with a dry cloth.</p> <p>If problem continues, replace SIM card with a known good SIM card. If problem persists, return the unit to your Service Provider for service.</p>
<p>2 SIM card read/write error. Power down and try again.</p>	<p>Failure to read from or write to the SIM card.</p>	<p>Power down ThurayaIP and try again.</p> <p>SIM card may be damaged. Visually inspect the SIM card and return it to your Service Provider if damaged.</p> <p>SIM card contacts may be dirty. Clean the SIM card contacts with a dry cloth.</p> <p>If the problem continues, replace SIM card with a known good SIM card. If the problem persists, return the unit to your Service Provider for service.</p>

Number and Description	Cause	Solution
3 SIM card access has been blocked. Please contact your Service Provider.	Failure to access the SIM card due to too many failed attempts with an invalid PIN.	This occurs after 3 failed attempts to enter the PIN. The SIM card is locked. Enter the PUK to unlock the SIM card.
4 SIM card has been improperly changed during an active session. Power down and try again.	You replaced a SIM card with another after the Modem was turned on.	The SIM card must be replaced when the unit is turned off. Make sure the unit is turned off before replacing the SIM.
5 SIM card is not responding. Power down and try again.	Hardware failure to access the SIM card.	<p>Power down ThurayaIP and try again.</p> <p>SIM card may be damaged. Visually inspect the SIM card and return it to your Service Provider if damaged.</p> <p>SIM card contacts may be dirty. Clean the SIM card contacts with a dry cloth.</p> <p>If problem continues, replace SIM card with a known good SIM card. If problem persists, return the unit to your Service Provider for service.</p>
6 A required data field is missing from the SIM card. Please contact your Service Provider.	Absence of a required data field on the SIM card.	SIM card was incorrectly programmed and is missing one or more required fields. The SIM card must be replaced by another from your Service Provider.
7 This subscriber is not allowed to connect to the network. Please contact your Service Provider.	Network connection failure because the user is not allowed to connect to the Network.	Your authorisation has been removed by your Service Provider (SIM card IMSI is not authorised). Contact your Service Provider to regain service.

Number and Description	Cause	Solution
8 This terminal is not allowed to connect to the network. Please contact your Service Provider.	Network connection failure because the Modem is not allowed to connect to the Network.	The Modem authorisation has been removed by your Service Provider (Modem IMEI is not authorised). Contact your Service Provider to regain authorised service.
9 This user has no subscription, service is not allowed. Please contact your Service Provider.	Network connection failure because you are not identified as a subscriber to the service.	Contact your Service Provider to receive authorised service. Your Service Provider should check the subscription entries in the Home Location Registry.
10 This Mobile Terminal was detached by the network. Cause unknown. Power down and try again.	Network connection broken with an unknown cause.	Power down ThurayaIP and try again. If the problem continues, contact your Service Provider.
11 Network connection failure – Invalid parameters used for network attach procedure. Please contact your Service Provider.	Network connection failure due to use of invalid parameters.	Contact your Service Provider.
12 Network connection failure - LLC or SNDCCP failure. Power down and try again.	Network connection failure caused by LLC or SNDCCP failure.	Power down ThurayaIP and try again. If the problem continues, contact your Service Provider.
13 Network connection failure – Unknown PDP type. Please contact your Service Provider.	Network connection failure.	Power down ThurayaIP and try again. If the problem continues, contact your Service Provider.

Number and Description	Cause	Solution
14 Network connection failure - User authorisation failed. Please contact your Service Provider.	Network connection failure because the user is not authorised for service.	Contact your Service Provider to regain authorised service. Your Service Provider should check the subscription entries in the Home Location Registry.
15 Network connection failure – Service option not supported. Please contact your Service Provider.	Network connection failure because the service option is not supported.	Contact your Service Provider to regain authorised service. The Service Provider should check the subscription entries in the Home Location Registry.
16 Network connection failure - Service option not subscribed. Please contact your Service Provider.	Network connection failure because user was not subscribed to the service option.	Contact your Service Provider to regain authorised service. The Service Provider should check the subscription entries in the Home Location Registry.
17 Network connection failure - N-SAPI has already been used. Power down and try again.	Network connection failure because network assigned an N-SAPI that is already being used.	Power down ThurayaIP and try again. If the problem continues, contact your Service Provider.
18 Network connection failure – Regular PDP deactivation by network. Power down and try again.	The connection was deactivated by the Network.	Power down ThurayaIP and try again. If the problem continues, contact your Service Provider.
19 Network connection failure - SM network failure. Power down and try again.	Connection failure due to the network Session Manager (SM).	Power down ThurayaIP and try again. If the problem continues, contact your Service Provider.

Number and Description	Cause	Solution
20 Network connection failure – Too many failures to activate PDP context. Power down and try again.	Too many failed attempts (4) to connect to the Network.	This failure may occur because of a weak signal due to obstructions or geographic position (such as extreme latitude or longitude). Contact your Service Provider to verify coverage for your location.
21 Network connection failure - Network assigned an invalid IP address. Power down and try again.	Assignment of an invalid IP address by the network during connection.	Power down ThurayaIP and try again. If the problem continues, contact your Service Provider. The Service Provider should verify that you have the correct network settings.
22 Network connection failure – No response from network. Power down and try again.	Network connection failure due to lack of a response from the network.	Power down ThurayaIP and try again. If the problem continues, contact your Service Provider.
23 Network connection failure – Protocol error received from network. Power down and try again.	Network connection failure due to a protocol error.	Power down ThurayaIP and try again. If the problem continues, contact your Service Provider.
24 Network connection failure – GPRS stack could not attach to MUX interface. Power down and try again.	Internal software error.	Power down ThurayaIP and try again. If the problem continues, contact your Service Provider.
25 Network connection failure - GPRS stack could not detach from MUX interface. Power down and try again.	Internal software error.	Power down ThurayaIP and try again. If the problem continues, contact your Service Provider.

Number and Description	Cause	Solution
26 SIM card error - IMSI field is longer than 8 bytes and is invalid. Please contact your Service Provider.	SIM card may have been programmed incorrectly.	SIM card was incorrectly programmed. The SIM card must be replaced by another from your Service Provider.
27 GPRS software internal failure - GPRS stack message subscription failure. Please contact your Service Provider.	Internal software error.	Power down ThurayaIP and try again. If the problem continues, contact your Service Provider.
28 Terminal Equipment has been disconnected from the Mobile Terminal. Please establish the connection	The connection between Terminal Equipment and Mobile Terminal has been removed, or The interface cable between Terminal Equipment and Mobile Terminal is not plugged in properly.	Remove and reinsert the interface cable from both the PC and the ThurayaIP . When done reboot the ThurayaIP .
29 Network access blocked – GPS fix is too old. Power down and try again. ThurayaIP will attempt to reacquire connection after receiving a new GPS fix.	The GPS fix is invalid or ThurayaIP is unable to obtain the valid GPS fix.	Verify that the Modem has an open view of the sky to get a GPS fix. If the problem continues, contact your Service Provider.
30 Network service is not available – Invalid position for selected LAI. Please power down and contact your Service Provider.	Network connection failure due to invalid position.	If the problem continues, contact your Service Provider.

Number and Description	Cause	Solution
41 Your PC is opening large numbers of TCP connections (may be a virus generating connections). The ThurayaIP terminal is running out of resources.	Applications (and possibly viruses) on your PC are generating excessive Internet connections.	Check your PC for applications that may open large numbers of connections and disable these applications. If the problem continues, contact your Service Provider.
42 TCP connection resources are depleted due to your PC opening excessive connections. You must restart your terminal to regain service to the network.	Excessive TCP connections by the PC have consumed all available connection resources in the terminal. The terminal cannot recover from this error.	Clean up PC applications that are consuming excessive TCP connections. Power down ThurayaIP and try again. If the problem continues, contact your Service Provider.
101 This user was detached by the network. Trying to reattach...	Connection broken by the Network.	Power down ThurayaIP and try again. If the problem continues, contact your Service Provider.
103 Network connection failure – PLMN is not allowed. Reacquiring connection.	Network connection failure due to PLMN not allowed.	If the problem continues, contact your Service Provider.
104 Network connection failure - LA is not allowed. Reacquiring connection...	Network connection failure because ThurayaIP is in a service not allowed Location Area (LA).	If the problem continues in other areas where service is allowed, contact your Service Provider.

Number and Description	Cause	Solution
105 Network connection failure – Roaming is not allowed. Reacquiring connection.	You are using a SIM card from a carrier that does not have a roaming agreement with your Service Provider.	If the problem continues with an authorised SIM card, contact your Service Provider.
106 Network connection failure - Mobile Terminal implicitly detached by the network. Reacquiring connection...	Network connection failure because Modem was implicitly detached by the Network.	If the problem continues, contact your Service Provider.
107 Network service is not available – Network resources not available. Reacquiring connection...	Network service not available due to lack of network resources.	If the problem continues, contact your Service Provider.
108 Network service is not available. Reacquiring connection...	Network service not available.	If the problem continues, contact your Service Provider.
109 Network service is not available – No network. Reacquiring connection...	Network service not available.	If the problem continues, contact your Service Provider.
110 Network service is not available - Cell access barred. Reacquiring connection...	Network service not available because cell access is barred.	If the problem continues, contact your Service Provider.

Number and Description	Cause	Solution
111 Network service is not available – Limited network service. Reacquiring connection...	Network service not available due to limited service.	If the problem continues, contact your Service Provider.
112 Network service is not available - Invalid position. Reacquiring connection...	Network service not available because the GPS position is not valid.	You should verify that the Modem has an open view of the sky to get a GPS fix. If the problem continues, contact your Service Provider.
113 Network service is not available – Invalid position for the selected Service Provider. Reacquiring connection...	Network connection failure because the of an invalid GPS position.	Verify that the Modem has an open view of the sky to get a GPS fix. If the problem continues, contact your Service Provider.
114 Network service is not available - Invalid position for selected RAI. Reacquiring connection...	The GPS fix does not match the selected Routing Area Information (RAI).	You should verify that the terminal has an open view of the sky to get a current GPS fix. If the problem continues, contact your Service Provider.
115 Network service is not available – Unknown cause. Reacquiring connection...	Network service not available – cause unknown.	If the problem continues, contact your Service Provider.
116 Network connection failure - Insufficient resources. Reacquiring connection...	Network connection failure due to insufficient resources.	If the problem continues, contact your Service Provider. Network may be down.

Number and Description	Cause	Solution
117 Network connection failure – PDP rejected for unspecified reason. Reacquiring connection...	Network connection failure – unknown cause.	If the problem continues, contact your Service Provider. Network may be down.
118 Network connection failure - Service option temporarily out of order. Reacquiring connection...	Network connection failure because service option is temporarily out of order.	If the problem continues, contact your Service Provider. Network may be down.
119 Network connection failure - PDP deactivated by network. Reacquiring connection...	Network connection failure.	If the problem continues, contact your Service Provider. Network may be down.
120 No network connection - User initiated PDP deactivation.	The Modem was powered down while connected to the network.	You will generally not see this code. In order for you to deactivate the PDP, you must power down the terminal. If the problem continues, contact your Service Provider.
121 Network connection failure - Missing or invalid APN. Please provide correct information and try again.	Network connection failure because the APN is missing or invalid.	Contact your Service Provider to get the correct network settings.
122 Network connection failure - Rejected by GGSN. Please re-enter User ID/Password and try again.	Network connection failure due to rejection by the GGSN.	Verify that your Service Provider User ID and password are correctly set on the Network Settings screen. If they are correct and the problem continues, contact your SP.

Number and Description	Cause	Solution
123 Network connection failure - Requested QoS rejected by network. Please modify parameters and try again.	Network connection failure because the requested QoS was rejected by the Network.	Modify the QoS settings and try again. If the problem continues, set all QoS settings to the default values and try again. If the problem continues with the default values, contact your Service Provider.
124 Network connection failure - Invalid transaction id. Reacquiring connection...	Network connection failure due to invalid transaction ID.	If the problem continues, contact your Service Provider.
125 Network connection failure – Unknown Session Manager error. Reacquiring connection...	Network connection failure due to unknown session manager error.	If the problem continues, contact your Service Provider.
126 Network access blocked - ThurayaIP will attempt to reacquire connection.	Network connection failure because network access is blocked.	Network access is blocked. The network will send the Modem a timer value, and the Modem will attempt to connect again when the timer is complete. If the problem continues, contact your Service Provider.
127 Network access blocked – Radio priority is less than threshold. ThurayaIP will attempt to reacquire connection.	Network access is blocked due to the user's priority.	You are blocked from Network access due to your network priority. If the problem continues, contact your Service Provider.
128 GPS fix is too old. Modem will attempt to reacquire connection after receiving a new GPS fix.	Notification of a GPS fix during or after Network connection procedure.	A new GPS fix was obtained during the connection process, superseding the old fix. The Modem will reacquire the connection. If the problem continues and a new connection cannot be made, contact your Service Provider.

Number and Description	Cause	Solution
129 Network access blocked - GPS location may be too old. If condition does not clear, please obtain a new GPS location.	GPS fix may be too old.	Verify that the Modem has an open view of the sky to get a GPS fix. If the problem continues, contact your Service Provider.
130 Network access unavailable - GPS location needs updating.	GPS fix is too old.	The ThurayaIP terminal will acquire a new GPS location and connection. Do not power off the terminal.
131 Battery temperature too high.	The battery is too hot.	Allow the terminal to cool down.
132 Terminal temperature too high.	The terminal is too hot.	Allow the terminal to cool down.
133 An external-antenna is recommended to achieve the requested data-rates.	The 384kbps streaming data rate requires an external antenna.	Attach an approved high gain external antenna to the terminal to obtain the highest streaming rate.

APN: Access Point Name. APNs can be assigned to each external network interface to allow communications among multiple Internet Service Providers (ISPs). If use of multiple ISPs is required in your network, on **ThurayaIP** wMMI Network Settings screen you can enable APN and enter the value supplied by your Service Provider.

DHCP: Dynamic Host Configuration Protocol. DHCP is a communications protocol that lets network administrators manage centrally and automate the assignment of IP addresses in an organization's network. With use of the Internet Protocol, each machine that can connect to the Internet needs a unique IP address. You must make sure that the Windows network settings on your PC are set to allow the network to choose IP settings automatically.

DNS: Domain Name Service, a static, hierarchical name service for TCP/IP hosts. The network administrator configures the DNS with a list of host names and IP addresses, allowing users of workstations configured to query the DNS to specify remote systems by host names rather than IP addresses. On **ThurayaIP** wMMI Network Settings screen, a primary and possibly a secondary DNS address supplied by your Service Provider must be assigned.

Ethernet: Ethernet is a local area networking method used widely throughout the computer industry. It is the only communication interface supported by **ThurayaIP**.

GGSN: Gateway GPRS Support Node.

GPRS: General Packet Radio System.

GPS: Global Positioning System. When the GPS receiver in **ThurayaIP** gets a bearing on a GPS satellite, the receiver computes and stores the Modem's location on earth. That location is used in the Pointing Process to obtain your location relative to the Thuraya Satellite.

LAI: Location Area Identity.

Normal Operational Mode: In this mode, **ThurayaIP** is connected to your network, allowing you to perform standard system activities such as Internet browsing. The other mode of Modem operation is **Pointing Mode**.

N-SAPI: Network Service Access Point Identifier.

MUX: Multiplexer.

PDP: Packet Data Protocol.

Pointing Mode: In this mode, using **ThurayaIP** Protractor and Compass, and referencing the Pointing Screen for indications of signal strength, you manipulate the Modem antenna to get the optimum Thuraya Satellite signal strength for your network connection. Pointing is required during Modem set-up or if the Modem has been moved from its previous location. Once you have obtained the best antenna position, you can enter Normal Operational Mode and be ready to perform standard activities.

Protractor: An instrument that measures angles, **ThurayaIP** protractor provides the current angle of the antenna so that you can adjust it to the antenna angle specified on the Pointing Screen.

QoS: Quality of Service.

SIM: Subscriber Identification Module. Your Service Provider issues you a SIM, containing your SIM Personal Identification Number (PIN) and other security-related information. You insert the SIM into **ThurayaIP** SIM holder as part of Modem hardware setup. If you configure the Modem to enable SIM PIN security, each time you invoke the Modem wMMI after turning on the Modem, PIN authorisation is required in order to use the system.

SIM PIN: A Subscriber Identification Module (SIM) Personal Identification Number (PIN) may be supplied by your Service Provider. If SIM PIN entry is enabled on **ThurayaIP** wMMI Security Management screen, a prompt requests you to enter the SIM PIN each time you run the wMMI. This helps prevent unauthorised use of your SIM.

SNDCP: Sub-network Dependent Convergence Protocol.

Static IP Address: A static Internet Protocol (IP) address is a number that is assigned to a computer by an Internet Service Provider (ISP) to be its permanent address on the Internet. Computers use IP addresses to locate and talk to each other on the Internet. If Static IP addressing is enabled on **ThurayaIP** wMMI Network Settings screen, you must enter an IP address supplied by your Service Provider in the Static Public Network IP Address field that follows.

Status Code: A number which uniquely references an event or condition in a hardware or software system. In **ThurayaIP**, if there is a fault detected, the status code and a description are displayed at the bottom of the Modem wMMI Home and Status screens.

Index

ThurayaIP

- address 14, 22, 40, 48, 49
- Administrative Access.....23
- antenna....ii, iv, v, 6, 7, 11, 12, 16, 18, 20, 27, 28, 29, 33, 34, 47, 49
- APN.....21, 22, 45, 48
- ARQ19
- audio pointing indicator13
- backlighting.....28
- battery ..iii, 3, 9, 12, 13, 14, 20, 21, 31, 32, 35, 36, 46
- battery door..... iii, 3
- browser ..2, 5, 8, 14, 30, 32, 33, 34
- browser URL address5
- compass5, 16, 32, 33
- Connect button9, 13, 34
- connection profiles.....16
- data usage 17, 18
- DNS21, 22, 34, 48
- drivers2
- elevation angle.....6
- Ethernet 1, 2, 4, 30, 48
- external power 13, 21
- fault codes31
- Fixed Rate..... 15, 19
- GPS2, 3, 4, 5, 7, 8, 9, 10, 13, 16, 28, 29, 33, 41, 43, 44, 46, 48
- hearing aidsiv
- IMEI 17, 38
- IMMI 8, 9, 10, 12, 13, 14
- Java..... 14, 33
- LCD iii, 8, 9, 10, 12, 28, 35
- login.....24
- MAC2, 17, 25, 27
- Menu button..... 9, 10, 12
- Modify button.....9, 10, 11, 12
- Multimedia 16, 19
- pacemakers.....iv
- password 23, 24, 45
- PIN..... 5, 9, 23, 33, 37, 49
- pointing 6, 8, 9, 10, 12, 16, 20, 27, 28, 29, 33, 34
- Power button.....3, 9, 11, 12
- Private Satellite Modem IP
 Address17
- proxy server..... 2, 32, 34
- Public Network IP Address 17, 22, 50
- QoS..... 10, 11, 12, 18, 19, 45, 49
- Quality of Service 10, 18, 49
- region.....25
- Restore Factory Defaults ... 16, 17
- RSSI.....12
- safety i, iii
- satellite...ii, 1, 3, 6, 7, 8, 12, 13, 14, 16, 19, 20, 29, 30, 33, 34, 48
- security code.....9, 17, 23, 24
- Signal Quality..... 20, 35
- Signal Strength 6, 20, 29, 33
- SIM ... ii, 1, 2, 3, 5, 9, 17, 23, 31, 32, 33, 36, 37, 41, 42, 49
- Software Version17
- SSID 25, 26
- temperature ii, iii, 35, 46, 47
- timeout 24, 25
- upgrade 16, 29, 30
- USB 1, 2, 4, 30
- video 16, 19
- voice19
- WEP..... 25, 26
- WiFi1, 9
- wireless LAN4, 13
- WLANvi, vii, 13, 14, 24, 25, 26
- wMMI vi, 5, 6, 9, 14, 22, 29, 30, 31, 32, 33, 35, 48, 49, 50